

File Name:	MEITRACK MVT800 User Guide	Creator:	Meitrack
Project:	MVT800	Creation Date:	2013-03-03
		Update Date:	2013-04-17
Sub Project:	User Guide	Page:	1 of 25
Revision:	V1.5	Confidential:	External Documentation

MEITRACK® GPS Vehicle Tracker



User Guide MVT800



File Name:	MEITRACK MVT800 User Guide	Creator:	Meitrack
Project:	MVT800	Creation Date:	2013-03-03
		Update Date:	2013-04-17
Sub Project:	User Guide	Page:	2 of 25
Revision:	V1.5	Confidential:	External Documentation

Content


1.	Copyright and Disclaimer.....	3
2.	Applications	3
3.	Product Function and Specifications.....	3
3.1	Product Function.....	3
3.2	Specifications	4
4.	MVT800 and Accessories.....	5
5.	View.....	6
6.	First Use	6
6.1	Install SIM Card	6
6.2	LED Indications.....	7
6.3	Configure by Computer	7
6.3.1	Set Function Phone Number	9
6.3.2	Set GPRS Parameters.....	10
6.4	Protocol Selection	11
6.5	Meitrack Protocol Series	12
6.5.1	Real-time Tracking by Mobile Phone.....	12
6.5.2	Set Function Phone Numbers.....	13
6.5.3	Arming/Disarming.....	14
6.6	Meiligao Protocol Series.....	15
6.6.1	Real-time Tracking by Mobile Phone.....	15
6.6.2	Set Function Phone Numbers.....	16
6.6.3	Arming/Disarming.....	16
6.7	Advanced Settings.....	16
6.7.1	Vehicle Transfer Coefficient Function	16
6.7.2	RF Match Wireless Remote Control and Vehicle (Optional).....	17
6.8	GPS Tracking System.....	18
7.	Installation	20
7.1	Connect GPS/GSM Antennas.....	20
7.2	Install I/O Cable	21
7.2.1	The Definition of I/O Cable.....	21
7.2.2	I/O Photos	22
7.2.3	Power Cable/Ground Wire	22
7.2.4	The Detection Port of High Level and Low Level Configuration.....	23
7.2.5	ACC and Door Detection.....	23
7.2.6	Signal of Vehicle Speed Sensor Detection	23
7.2.7	Remote Control Stop Engine	24
7.2.8	Buzzer Alarm (Optional)	24
7.2.9	Detection Port of Temperature and Fuel --- Meitrack Protocol Only (Optional).....	25
7.2.10	Port of Microphone and Speaker (Optional)	25
7.3	Mount the MVT800 Unit	25



File Name:	MEITRACK MVT800 User Guide	Creator:	Meitrack
Project:	MVT800	Creation Date:	2013-03-03
		Update Date:	2013-04-17
Sub Project:	User Guide	Page:	3 of 25
Revision:	V1.5	Confidential:	External Documentation

1. Copyright and Disclaimer

Copyright © 2013 MEITRACK. All rights reserve

MEITRACK and  are trademarks that belong to Shenzhen Meiligao Electronics Co., Ltd.

The user manual may be changed without prior notification.

This user manual, or any part thereof, may not be reproduced for any purpose whatsoever without the written authorization of Meiligao (MEITRACK), or transmitted in any form, either electronically or mechanically, including photocopying and recording.

In no event shall Meiligao (MEITRACK) be liable for direct, indirect, special, incidental, or consequential damages (including but not limited to economic loss, personal injury, and loss of asset and property) arising out of the use or inability or illegality to use the product or documentation.

2. Applications

- Vehicle Real Time Tracking and Security
- Fleet Management

3. Product Function and Specifications

3.1 Product Function

- U-blox 6 GPS and Quad Band GSM 850/900/1800/1900Mhz
- GPS + GSM Dual Module Tracking
- SMS/TCP/UDP (MEITRACK and Meiligao Protocol compatible)
- Waterproof IP65
- Track on Demand
- Track by Time/ Distance Interval
- Track on Mobile Phone
- Listen-in or Two-way Audio (Optional)
- Internal Flash Memory (8M)
- Inbuilt Motion Sensor
- Internal Backup Battery 850mAh
- SOS Alarm
- Geo-fence Alarm
- GPS Blind Area Alarm
- Low Battery Alarm
- Speeding Alarm
- Tow Alarm
- GPS Antenna/ External Power Cut Alarm



File Name:	MEITRACK MVT800 User Guide	Creator:	Meitrack
Project:	MVT800	Creation Date:	2013-03-03
		Update Date:	2013-04-17
Sub Project:	User Guide	Page:	4 of 25
Revision:	V1.5	Confidential:	External Documentation

- Mileage Report
- Engine Cut (Engine immobilization)
- 4 Digital Input(1 Negative,1 Positive and 2 can be set through software)
- 2 Output
- 1 Analog Input for Fuel Detection (Optional)
- 1 Input for Pulse Speed Detection
- 1 Output for Buzzer Alarm (Optional)
- 1 Input for Digital Temperature Sensor (Optional)
- Wireless Remote Control (Arming, Disarming, SOS, Looking for Car in Garage) (Optional)

3.2 Specifications

Items	Specifications
Dimension	90*65*32mm
Weight	220g
Input Voltage	DC 11V~36V/1.5A
Back-up Battery	850mAh/3.7V
Power consumption	85mA standby current
Operating Temperature	-20°C~55°C
Humidity	5%~95%
Work Time	36 hours in power-saving mode and 8 hours in normal mode
LED	2 LED lights to show GPS, GSM status
Button	1 SOS and 1 power on/off
Microphone	External connection (Optional)
Memory	8M Byte
Sensor	Motion sensor
GSM Frequency	GSM 850/900/1800/1900MHz
GPS Chip	Latest GPS U-blox chipset, 50 channels all-in-view tracking
GPS Sensitivity	-161dB
Positioning Accuracy	10 meters
GSM/GPS Antenna	SMA external connection antenna
I/O	4Digital Input(1 SOS, 1 Positive,1 Door Trigger, 1 ACC Detection) 1 Pulse Speed Detection 2 Output(1 Buzzer Alarm,1 Remote Engine Cut) 1 Analog Input 1 Input for Digital Temperature Sensor 1 USB232 Interface 1Wireless Remote Control (433Mhz)

File Name:	MEITRACK MVT800 User Guide	Creator:	Meitrack
Project:	MVT800	Creation Date:	2013-03-03
		Update Date:	2013-04-17
Sub Project:	User Guide	Page:	5 of 25
Revision:	V1.5	Confidential:	External Documentation

4. MVT800 and Accessories



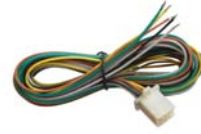
MVT800 with Battery



GPS Antenna



GSM Antenna



I/O Cable



Power Extension Cord



SOS Button



USB Data Cable



CD

Optional Accessories:



Wireless
Remote Control



Buzzer Alarm



Microphone



Speaker



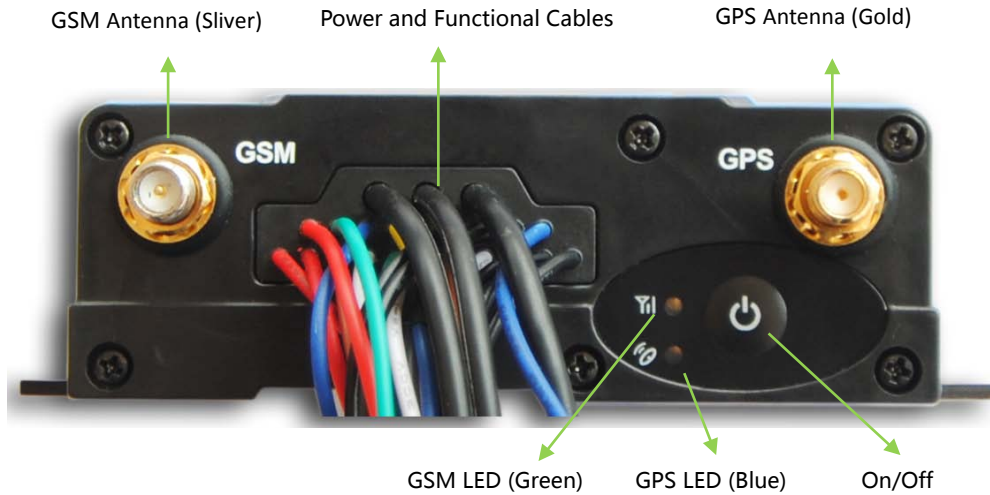
Fuel Sensor



Temperature
Sensor

File Name:	MEITRACK MVT800 User Guide	Creator:	Meitrack
Project:	MVT800	Creation Date:	2013-03-03
		Update Date:	2013-04-17
Sub Project:	User Guide	Page:	6 of 25
Revision:	V1.5	Confidential:	External Documentation

5. View



6. First Use

6.1 Install SIM Card

Check that the SIM has not run out of credit (Verify the SIM card has sufficient fund and fully function in a phone);

Check the SIM Lock code feature is off;

If MVT800 required to send SMS to a function phone number, make sure the Caller ID is not block.

Before installing the SIM card, make sure the MVT800 is power off.

Unscrew and remove cover of MVT800.

Insert the SIM card by sliding it into the card holder with the chip module facing to the connectors on PCB.

Put the cover and screws back in place.



File Name:	MEITRACK MVT800 User Guide	Creator:	Meitrack
Project:	MVT800	Creation Date:	2013-03-03
		Update Date:	2013-04-17
Sub Project:	User Guide	Page:	7 of 25
Revision:	V1.5	Confidential:	External Documentation

6.2 LED Indications



Press and hold the Power On/Off button for 3~5 seconds to turn on/off MVT800.

GPS LED (Blue)	
On	One button is pressed or input is active.
Flashing (every 0.1 second)	Initializing or back-up battery power is low
Flashing (0.1 second on and 2.9 seconds off)	MVT800 has a GPS fix
Flashing (1 second on and 2 seconds off)	MVT800 has no GPS fix
GSM LED (Green)	
On	A call is coming in / a call is being made
Flashing (every 0.1 second)	Initializing
Flashing (0.1 second on and 2.9 seconds off)	MVT800 is connected to the GSM network
Flashing (1 second on and 2 seconds off)	MVT800 is not connected to the GSM network

6.3 Configure by Computer

The following shows you how to configure the MVT800 with **MEITRACK Manager**.

Please refer to the **MEITRACK Manager User Guide** for more detailed on configurations and functions.

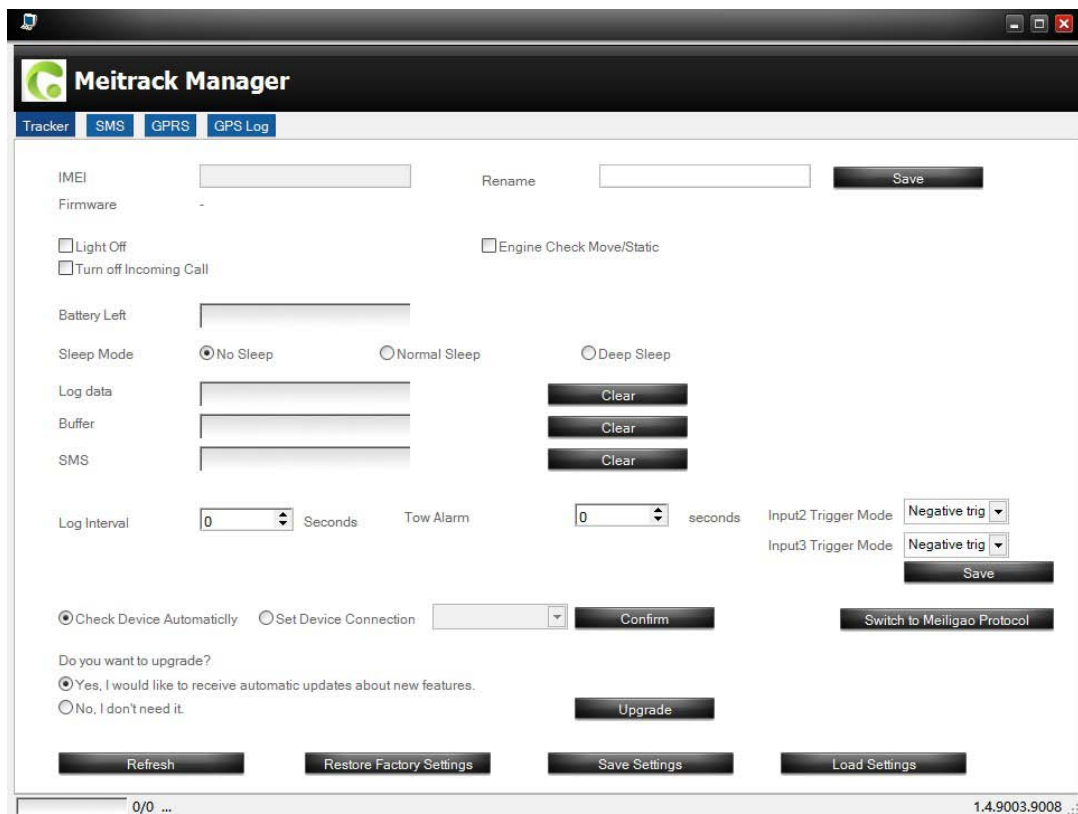
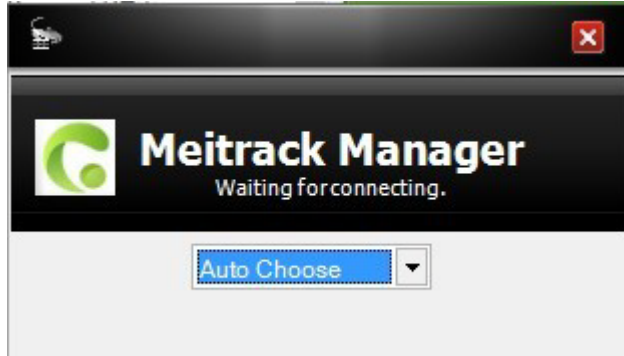
For the first time use of USB-to-serial cable, it is required to install the PL2303 Driver

Connect the USB Data Cable between MVT800 and PC.



File Name:	MEITRACK MVT800 User Guide	Creator:	Meitrack
Project:	MVT800	Creation Date:	2013-03-03
		Update Date:	2013-04-17
Sub Project:	User Guide	Page:	8 of 25
Revision:	V1.5	Confidential:	External Documentation

Meitrack Manager will automatically detect port and model, and enter into the main interface as follow:

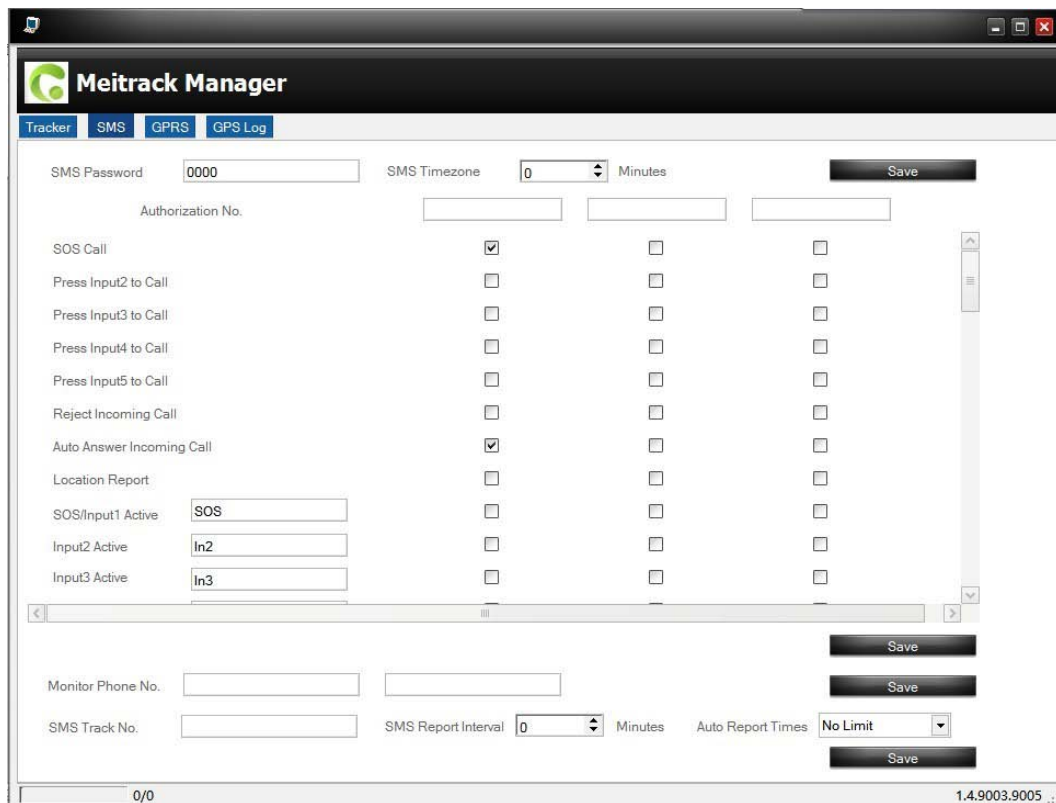


File Name:	MEITRACK MVT800 User Guide	Creator:	Meitrack
Project:	MVT800	Creation Date:	2013-03-03
		Update Date:	2013-04-17
Sub Project:	User Guide	Page:	9 of 25
Revision:	V1.5	Confidential:	External Documentation

6.3.1 Set Function Phone Number

Select SMS Tracking to set SMS Tracking, Function Phone Number, Listening-in (Voice Monitoring) and Time Zone, etc.

Please refer to the **MEITRACK Manager User Guide** for more detailed information regarding configuration and functions.



The screenshot shows the 'SMS' configuration page in the Meitrack Manager. The interface includes the following elements:

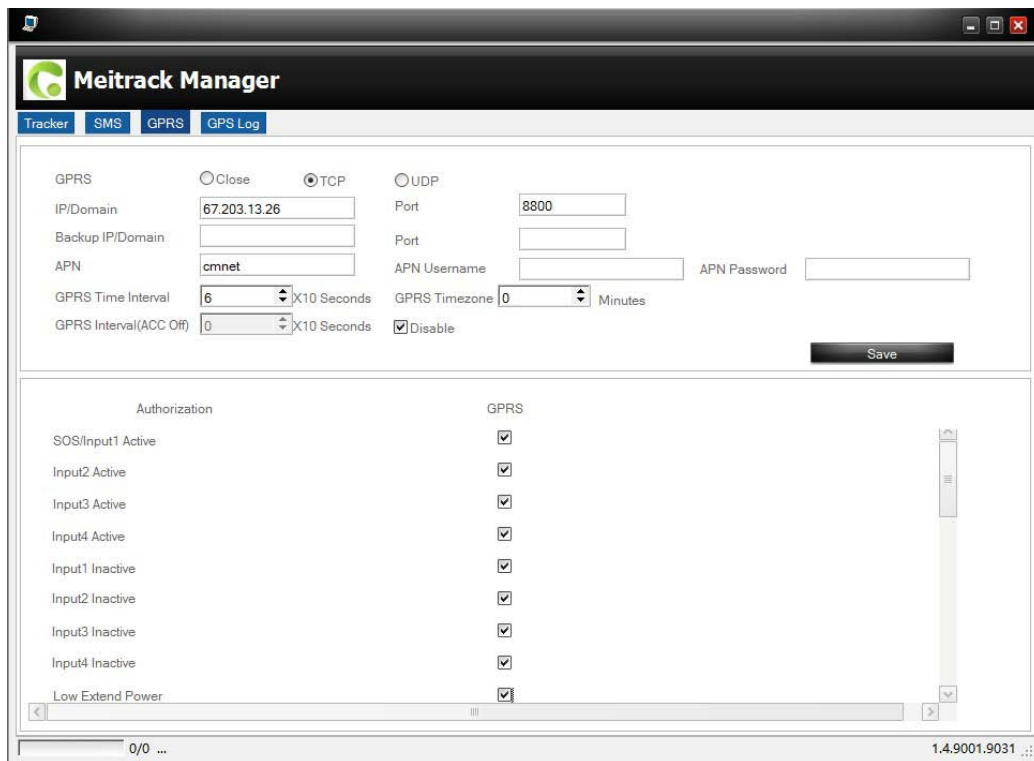
- Navigation:** Tracker | SMS | GPRS | GPS Log
- Fields:**
 - SMS Password: 0000
 - SMS Timezone: 0 Minutes
 - Authorization No. (three empty input fields)
 - SOS/In1 Active: SOS
 - Input2 Active: In2
 - Input3 Active: In3
 - Monitor Phone No. (two empty input fields)
 - SMS Track No. (empty input field)
 - SMS Report Interval: 0 Minutes
 - Auto Report Times: No Limit
- Checkboxes:**
 - SOS Call:
 - Press Input2 to Call:
 - Press Input3 to Call:
 - Press Input4 to Call:
 - Press Input5 to Call:
 - Reject Incoming Call:
 - Auto Answer Incoming Call:
 - Location Report:
- Buttons:** Multiple 'Save' buttons are present throughout the form.
- Footer:** 0/0 on the left and 1.4.9003.9005 on the right.

File Name:	MEITRACK MVT800 User Guide	Creator:	Meitrack
Project:	MVT800	Creation Date:	2013-03-03
		Update Date:	2013-04-17
Sub Project:	User Guide	Page:	10 of 25
Revision:	V1.5	Confidential:	External Documentation

6.3.2 Set GPRS Parameters

Select the GPRS tab to set GPRS parameters, such as Server IP, and Port (IP/Domain: 67.203.13.26, Port: 8800), APN, Time Interval, and GPRS Event Report, etc

Please refer to the **MEITRACK Manager User Guide** for more detailed information regarding configuration and functions.



Note: Meitrack Manager software can be found in the enclosed CD. The Language will be chosen automatically according to the user operating system or press Ctrl + L to change the language.

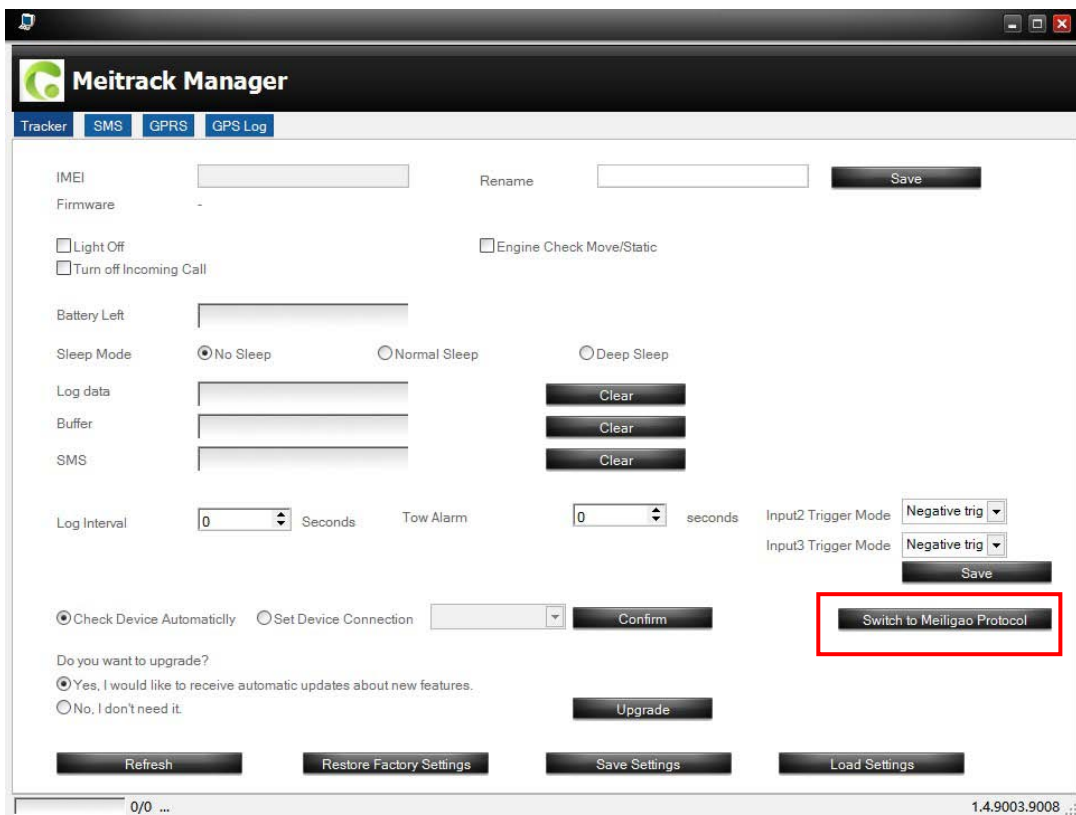
File Name:	MEITRACK MVT800 User Guide	Creator:	Meitrack
Project:	MVT800	Creation Date:	2013-03-03
		Update Date:	2013-04-17
Sub Project:	User Guide	Page:	11 of 25
Revision:	V1.5	Confidential:	External Documentation

6.4 Protocol Selection

Notice: please don't switch the protocol to Meiligao if necessary, or some functions may not work via the same command.

MVT800 is compatible with both Meitrack and Meiligao Protocol (Default: Meitrack Protocol). Please set through Meitrack Manager.

Steps: Connect MVT800 with Personal Computer, click Meitrack Manager.exe, enter the main interface and click Switch to Meiligao Protocol to change the default Meitrack Protocol to Meiligao Protocol.



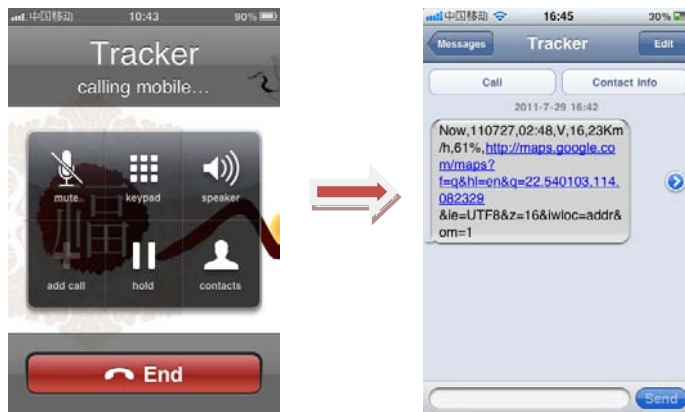
File Name:	MEITRACK MVT800 User Guide	Creator:	Meitrack
Project:	MVT800	Creation Date:	2013-03-03
		Update Date:	2013-04-17
Sub Project:	User Guide	Page:	12 of 25
Revision:	V1.5	Confidential:	External Documentation

6.5 Meitrack Protocol Series

6.5.1 Real-time Tracking by Mobile Phone

Make a call to MVT800 and it will report with one SMS.

Click on the link then the location can be shown directly on Google Maps on your mobile phone.



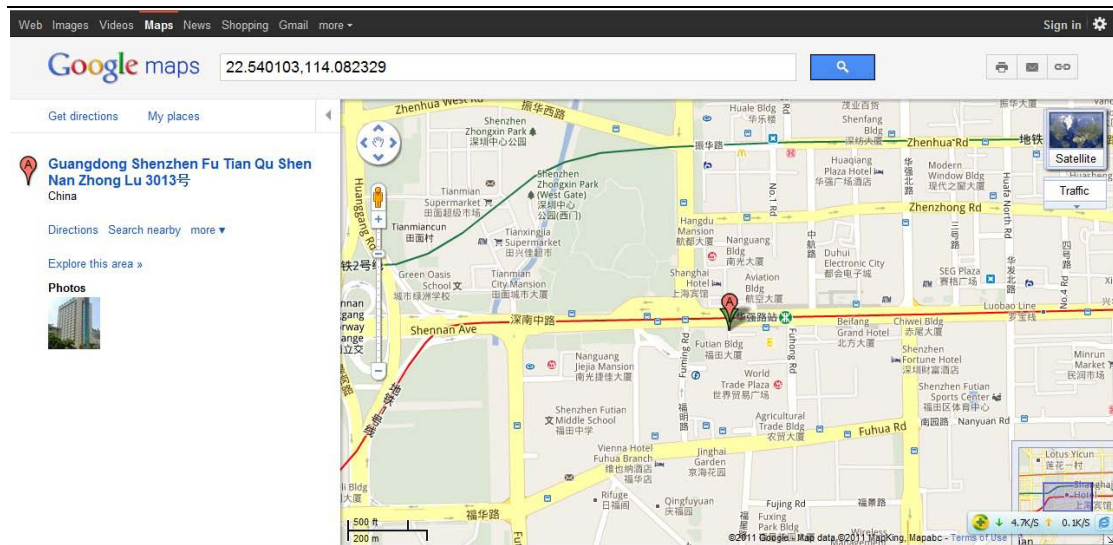
Report description:

Now, 110727 02:48, V, 16, 23Km/h, 61%, <http://maps.google.com/maps?f=q&hl=en&q=22.540103, 114.082329&ie=UTF8&z=16&iwloc=addr&om=1>

Content	Description	Note
Now	Current Location	Alarm Type
110721 16:40	Date & Time: 21 July, 2011, 16:40pm	Date & Time in YYMMDD HH:MM
V	No GPS fixed	GPS Status Indicator: A = valid, V = invalid
10	GSM signal=10	GSM Signal. Decimal Digit (0~31)
0Km/h	Speed=0	KM/h. Decimal digit
97%	Battery Power: 97%	Battery Power Balance (Percentage)
http://maps.google.com/maps?f=q&hl=en&q=22.540103, 114.082329&ie=UTF8&z=16&iwloc=addr&om=1	Latitude: 22.513015 Longitude: 114.057235	Google Maps Web Link with Latitude and Longitude. Click on the link to get the location.

If your mobile cannot visit HTTP websites, input the latitude and longitude into Google Maps as the following picture shows to get the position:

File Name:	MEITRACK MVT800 User Guide	Creator:	Meitrack
Project:	MVT800	Creation Date:	2013-03-03
Sub Project:	User Guide	Update Date:	2013-04-17
Revision:	V1.5	Page:	13 of 25
		Confidential:	External Documentation



More SMS Commands

You can configure MVT800 by mobile phone or by personal computer using the MEITRACK Manager. Please refer to the following text.

Note:

1. The default password is 0000, it can be modified through SMS command (Refer to below text) and Meitrack Manager via personal computer (Refer to 6.3 Configure by Computer).
2. MVT800 will only accept commands from a user with the correct password and report SMS report to the user. If function phone number was set, only this phone number can receive SMS reports.

6.5.2 Set Function Phone Numbers

Command: 0000, A71,function phone number 1,function phone number 2,function phone number 3

SMS Get: IMEI, A71, OK

Note:

Function Phone Number: Max 16 characters. If no preset phone number, it is empty (default is empty).

First Function Phone Number: Authorize for SOS Alarm, Calling for Real-time Location, Geo-fence Alarm, Low Battery Alarm, Open the Vehicle's Door or Start the Vehicle without permission.

Send command "0000, A71" to delete all function phone numbers.

When the SOS button is pressed, MVT800 will make a call to the function phone number 1, 2 and 3. It will stop calling when one number answers.

Example: 0000,A71,13811111111,13822222222,13833333333

SMS Get: 353358017784062,A71,OK

File Name:	MEITRACK MVT800 User Guide	Creator:	Meitrack
Project:	MVT800	Creation Date:	2013-03-03
		Update Date:	2013-04-17
Sub Project:	User Guide	Page:	14 of 25
Revision:	V1.5	Confidential:	External Documentation

6.5.3 Arming/Disarming

There are two ways to set Arming, either through Wireless Remote control (Optional), or SMS Command

Suggestion: Using the optional accessory Wireless Remote Control and Buzzer Alarm to strengthen protection, and please set the Function Phone Number to make sure it can be received the call and SMS Report while stolen.

- Wireless Remote Control: Press the Lock key to Arm. If buzzer alarm installed, it will sound to confirm the Arming successfully, else if buzzer is not available, then open the vehicle's door to trigger a SMS alert or a call to be sent to the function phone number. Press Unlock to Disarm.
- SMS Command: Arming and Disarming by SMS Command.

Command: 0000,B21,Status

SMS Get: IMEI,B21,OK

Note: Status=1 Arming, Status=0 Disarming.

While in Armed status, and as been triggered by open door or engine starts; MVT800 will call or send SMS report to the function phone number.

In the status of Disarm, all security alarms will be OFF.

Function	Call	SMS	Engine Cut	Buzzer	Note
Open the Vehicle's Door	√	√		√	While open the vehicle's door without permission, the buzzer will alarm all the time until unlock the status; MVT800 will send call in turns and send SMS report to the function phone numbers.
Start the Vehicle	√	√	√	√	While start the vehicle, the engine will be cut to avoid stolen, buzzer will alarm all the time until unlock the status; MVT800 will send call in turns and send SMS report to the function phone numbers.
Set Arming while Driving (Intercept the Driving Vehicle)		√	√		While the vehicle was stolen, arming (the arming would work only setting by SMS or GPRS while driving) and it can be stopped engine to intercept if the speed is lower than 5km/h. MVT800 will send Alarm SMS report to function phone numbers.
Tow Alarm	√	√			On the status of ACC off, the tow alarm will be trigger while the vehicle vibrate.MVT800 will send call in turns and send SMS report to the function phone numbers.

Please refer to the **MEITRACK SMS Protocol** for more detailed SMS command.

File Name:	MEITRACK MVT800 User Guide	Creator:	Meitrack
Project:	MVT800	Creation Date:	2013-03-03
Sub Project:	User Guide	Update Date:	2013-04-17
Revision:	V1.5	Page:	15 of 25
		Confidential:	External Documentation

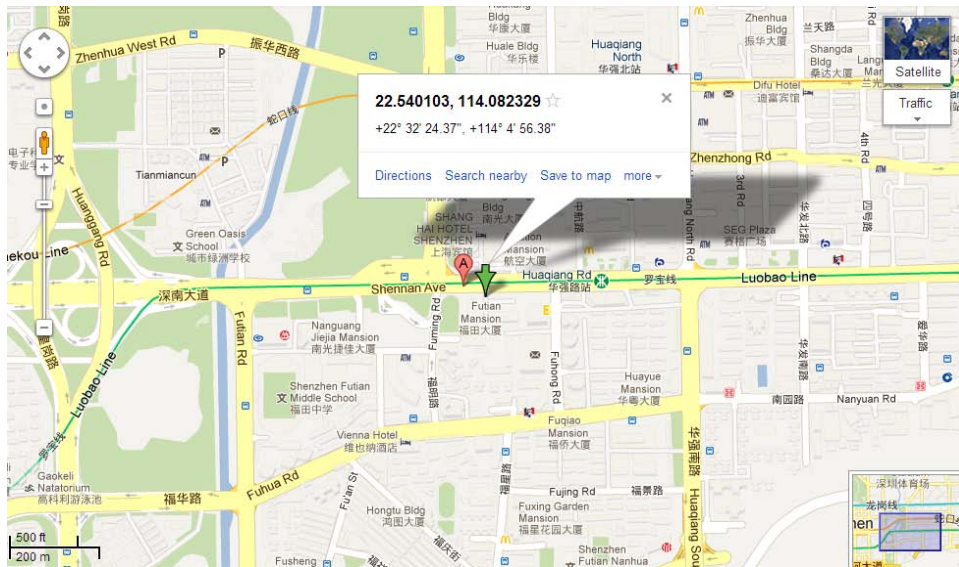
6.6 Meiligao Protocol Series

6.6.1 Real-time Tracking by Mobile Phone

Method I: Make a call to MVT800 and it will report with one SMS.

Latitude = 22 32 36.63N Longitude = 114 04 57.37E, Speed = 2.6854Km/h, 2008-12-24,01:50

Location Online Checking: Visit <http://maps.google.com> and enter the Latitude and Longitude to get the location:



Method II: SMS Command (Get a map link)

Command: W000000,100

SMS

Get: <http://maps.google.com/maps?f=q&hl=en&q=22.540103,114.082329&ie=UTF8&z=16&iwloc=addr&om=1>

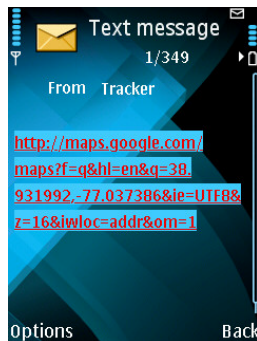
Note: The first value 22.540103 is Latitude, the second value 114.082329 is Longitude.

Click on the link then the location can be shown directly on Google Map on your mobile phone.

Note: Only smart phones and PDAs support this function.

Example:

W000000,100



File Name:	MEITRACK MVT800 User Guide	Creator:	Meitrack
Project:	MVT800	Creation Date:	2013-03-03
		Update Date:	2013-04-17
Sub Project:	User Guide	Page:	16 of 25
Revision:	V1.5	Confidential:	External Documentation

6.6.2 Set Function Phone Numbers

Command: W***** ,003,F,P,T

Description: Function Phone Number are to receive calls and SMS reports of SOS Alarms, the Alarm and Location of Input 2/Input 3, and Open the Vehicle's door or Start the Vehicle without permission.

Note:

F=0, Off (Default)

F=1, Send SMS report only

F=2, Send SMS report and Call

P=1, Set SOS function phone number (Input 1), default to be the number receiving the alarm while open the Vehicle's door or start the Vehicle without permission.

P=2, Set the function phone number of Input2

P=3, Set the function phone number of Input3

T: Default Function Phone Number, Max 16 characters.

Example:

W000000,003,1,1,88888888

Please refer to the **Meiligao Protocol** for more detailed SMS command.

6.6.3 Arming/Disarming

The same method of Meitrack Protocol, please refer to 6.5.3 Arming/Disarming

6.7 Advanced Settings

6.7.1 Vehicle Transfer Coefficient Function

Please connect digital input 5 to vehicle speed sensor then the vehicle's speed can be calibrated by setting Vehicle Transfer Coefficient. It will be calculated by the latest transfer coefficient after calibration successfully.

Two methods:

1. Calibrate Automatically: GPS Speed will be calibrated automatically by transfer coefficient

- 1) Vehicle has been driving for 60s by the speed beyond 40km/h sequentially.
- 2) MVT800 has recorded the pulse numbers of sensor in 60s.
- 3) No sound prompt
- 4) It won't be calibrated if there is no pulse.

File Name:	MEITRACK MVT800 User Guide	Creator:	Meitrack
Project:	MVT800	Creation Date:	2013-03-03
		Update Date:	2013-04-17
Sub Project:	User Guide	Page:	17 of 25
Revision:	V1.5	Confidential:	External Documentation

2. Calibrate Manually: GPS Speed will be calibrated by setting manually.

1) Send SMS/GPRS Command B23 to enter the status of calibration. The buzzer will make a long sound and the green light on.

SMS Command: 0000,B23,Status

Description: Status=1, entering calibration; the SMS Command is: 0000,B23,1

 Status=2, exit calibration

Get: 0000,B23,OK

2) After the Vehicle drives at the speed of 40km/h, press SOS for 2s, MVT800 starts to count the numbers of pulse; after calibrating successfully, the buzzer will make 2 sounds and the green light recover to the normal status.

3) Save the calibrate value after successfully, it will no long to count by GPS speed.

4) Without press SOS after on the status of calibration, the calibration will exit automatically.

Note: What is Vehicle Transfer Coefficient?

1) The numbers of the pulse output by vehicle speed sensor for every km, unit: pls/km.

2) Calculate by the formula of Transfer Coefficient:

$$Speed = pls_num * 3600 / K$$

Speed is the value after calculation, unit km/h

Pls_num is the numbers of pulse output by vehicle speed sensor in 1 second

K is the transfer coefficient, unit: pls/km

6.7.2 RF Match Wireless Remote Control and Vehicle (Optional)

If the wireless remote control doesn't match with MVT800, please match the code manually. To get the status of the matching, please install buzzer alarm when matching the code.

There are 2 methods:

1. Match by ACC

Note: If connected Input 4 with ACC, please match follow the steps as below:

1) Turn ACC OFF to ACC ON for 8 times, on the 8th times stay at ACC ON.

2) Wait for 3 seconds, the buzzer will make a long sound entering the matching status, and the green light of the wireless remote control on at the same time.

3) In the status of matching, please press any key of the wireless remote control which is under code matching in 20 seconds. The buzzer will make two sounds to prompt matching successfully.

If continue to matching a second wireless remote control, please press any key within this 20 seconds. The buzzer will make two sounds to prompt matching successfully and 5 sounds to exit the matching.

4) Only matching for one wireless remote control, if no any operation when successfully matching code, it will exit automatically after 20 seconds. And the buzzer will make 5 sounds.

Note:

- The times of turn ACC ON to OFF will be cleaned if the time internal beyond 3s in one turns.
- Please complete code match within 20 seconds, or it will exit automatically.
- If pressing for a second time on the same wireless remote control, it will exit at once.

File Name:	MEITRACK MVT800 User Guide	Creator:	Meitrack
Project:	MVT800	Creation Date:	2013-03-03
		Update Date:	2013-04-17
Sub Project:	User Guide	Page:	18 of 25
Revision:	V1.5	Confidential:	External Documentation

2. Match by SMS Command:

1) SMS Command: 0000,B24,Status

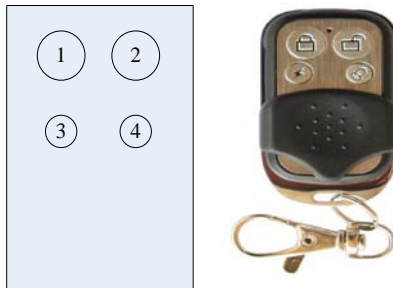
Description: Status=1, entering matching; the SMS command is 0000,B24,1

 Status=0, exit matching

Get: 0000,B24,OK

2) After enter into the status of matching, please refer to the above steps.

3. Key on RF Wireless Remote Control



1) Key-1: Short press to arming, the buzzer will make a sound.

2) Key-2: Short press to disarming, the buzzer will make 2 sound.

3) Key-3: Long press for 2s (SOS button function), receive SMS/GPRS alarm. While call the function phone number it will enter into sound off listen-in, the buzzer and speaker won't sound.

4) Key-4: Looking for vehicle in the garage, short press and the buzzer will make 5 sounds.

Note: for more detail information Arming Status, please refer to 6.5.3 Arming/Disarming.

6.8 GPS Tracking System

Steps:

Configure Parameters -Log in Meitrack Family GPS Tracking System MS02 (www.trackingmate.com) - Add Devices

1. There 2 methods to configure:

Configure by SMS: Send SMS command (**0000,A21,1,IP,Port,APN,APN username,APN password**) and (**0000,A12,6,0**) to MVT800.

Configure by Meitrack Manager: connect with personal computer, run Meitrack Manager.exe, enter the main interface and select GPRS Tracking, setting Server IP, Port, APN, Turn on TCP and Time Interval.

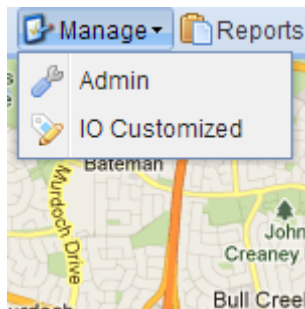
File Name:	MEITRACK MVT800 User Guide	Creator:	Meitrack
Project:	MVT800	Creation Date:	2013-03-03
		Update Date:	2013-04-17
Sub Project:	User Guide	Page:	19 of 25
Revision:	V1.5	Confidential:	External Documentation

2. Visit and log in ms02.trackingmate.com (Please contact us if lost your account and password)



The login page features the Meitrack logo and the tagline 'Every Step in Tracking'. It includes two input fields for 'User ID' and 'Password', a 'Login' button, and a 'Forgot your password?' link.

3. Enter the map and click Manage -Admin

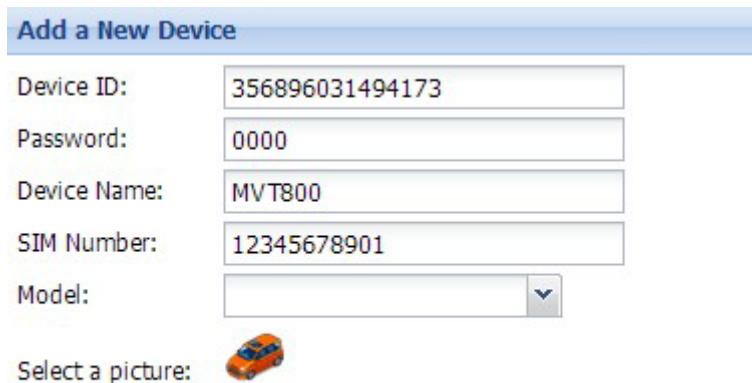


4. Select Users and add the new device.



A horizontal bar contains three buttons: 'Add a New Device' (highlighted with a red box), 'Add Existing Device', and 'Remove Device'.

5. Get IMEI from serial port and register via IMEI (The IMEI is 011691003108431 for example)



The 'Add a New Device' form contains the following fields:

- Device ID: 356896031494173
- Password: 0000
- Device Name: MVT800
- SIM Number: 12345678901
- Model: (dropdown menu)
- Select a picture: (with a small car icon)

File Name:	MEITRACK MVT800 User Guide	Creator:	Meitrack
Project:	MVT800	Creation Date:	2013-03-03
		Update Date:	2013-04-17
Sub Project:	User Guide	Page:	20 of 25
Revision:	V1.5	Confidential:	External Documentation

6. Double click the Control Panel on the right of the main interface to check if the data on the bottom is updated.

Status
Alarm
Updates

Device Name:	<input type="text" value="Mwahid"/>	Fix:	<input type="text" value="Invalid"/>	Speed:
GPS Time:	<input type="text" value="03-05 00:41:50"/>	Latitude:	<input type="text" value="29.997390"/>	Others:
Received Time:	<input type="text" value="03-05 00:54:28"/>	Longitude:	<input type="text" value="31.159672"/>	
Journey(Km):	<input type="text" value="23500.01"/>	Run Time:	<input type="text" value="0day(s)0:0:0"/>	
Location:	<input type="text" value="GPS Location:benito juarez 329, Zona Centro, 91700 Veracruz, Mexico"/>			

7. Installation

7.1 Connect GPS/GSM Antennas



GSM Antenna



GPS Antenna

Connect the GSM antenna to the SMA connector which is 'GSM' text labeled. The GSM antenna is non-directional, so you can hide it in any place of vehicle.

Connect GPS antenna to the GPS connector which is 'GPS' labeled. The optimum location for the GPS antenna is on the roof of the vehicle. The covert and GPS antenna are directional, make sure they are facing up and lying as flat as possible. Secure them in place with glue or zip ties.

Note: Do not shield or cover the GPS antenna with any objects containing metal.

File Name:	MEITRACK MVT800 User Guide	Creator:	Meitrack
Project:	MVT800	Creation Date:	2013-03-03
		Update Date:	2013-04-17
Sub Project:	User Guide	Page:	21 of 25
Revision:	V1.5	Confidential:	External Documentation

7.2 Install I/O Cable

7.2.1 The Definition of I/O Cable

The I/O cable includes power, analog input, negative/positive input and output.

I/O	Color	Description
Digital Input 1 (SOS)	Input: White Ground Wire: Black	Alarm while input1 triggering (Or press SOS).
Digital Input 2	White	Input2 is available for high level and low level, default is low level, normal output.
Digital Input 3(Door)	Grey	Input3 is available for high level and low level, default is low level for detecting door.
Digital Input 4(ACC)	Brown	High level input (3~60V), default for ACC detection.
Digital Input 5(RPM)	Green	Detect the signal cable of vehicle speed sensor for detecting speed.
Digital Output	Yellow	Open-Drain Output, the power circuit of output is 1W, 0~100V.
Ground Wire	Black	Reserved, work with input/output
Power	Positive of Power: Red Ground Wire: Black	Main Power of the device, DC 11~36V, hardware under-voltage, overvoltage protection
Buzzer Output	Output: Brown Output: White	PWM Output: Press buzzer, nothing to do with positive and negative
Fuel Capacity AD Detection Port	Positive of Power: Red Ground Wire: Black AD Cable: Blue	0~5V AD detection Output positive power is the input voltage of the device (Only for Meitrack Protocol) The interface should match the fuel sensor
Temperature Detection Port	Positive of Power: Red Ground Wire: Black USB Cable: Green	The positive of the power is the output voltage of the device 5V. The interface should match the temperature sensor. (Only for Meitrack Protocol)
Microphone and Speaker	Black and Red	Black is speaker Red is microphone
Remote Control Antenna	Blue	

File Name:	MEITRACK MVT800 User Guide	Creator:	Meitrack
Project:	MVT800	Creation Date:	2013-03-03
		Update Date:	2013-04-17
Sub Project:	User Guide	Page:	22 of 25
Revision:	V1.5	Confidential:	External Documentation

7.2.2 I/O Photos



Digital Input 1 (SOS)



PWM Output



Temperature Detection



Remote Control Antenna



Fuel Detection



Digital Input/ Output Port



Microphone and Speaker Port



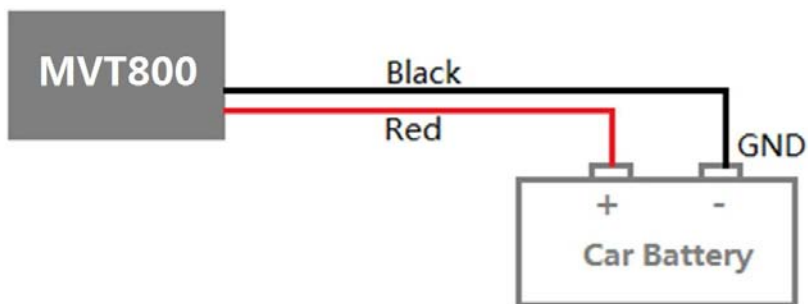
Power Port



USB 232 Port

7.2.3 Power Cable/Ground Wire

Connect GND (-Black) and Power (+Red) wires to the battery of vehicle.

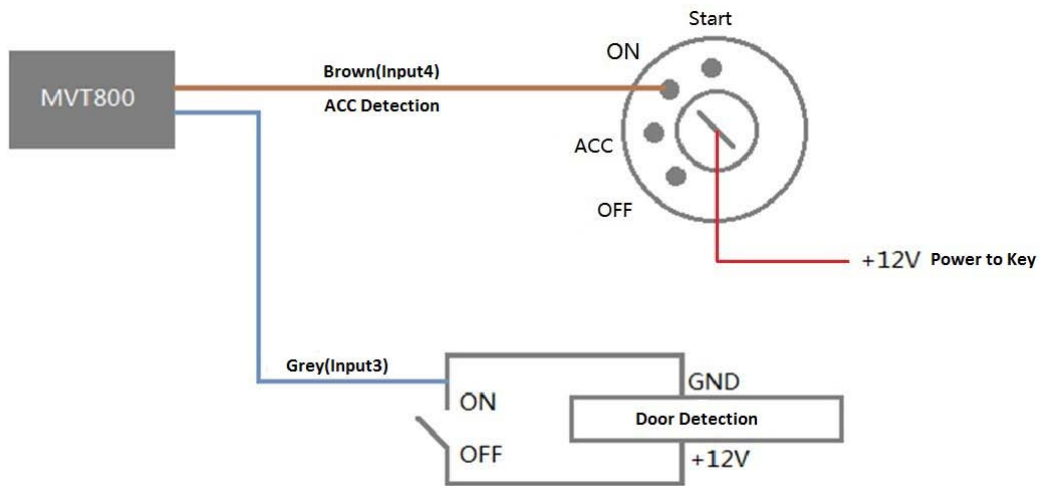


File Name:	MEITRACK MVT800 User Guide	Creator:	Meitrack
Project:	MVT800	Creation Date:	2013-03-03
		Update Date:	2013-04-17
Sub Project:	User Guide	Page:	23 of 25
Revision:	V1.5	Confidential:	External Documentation

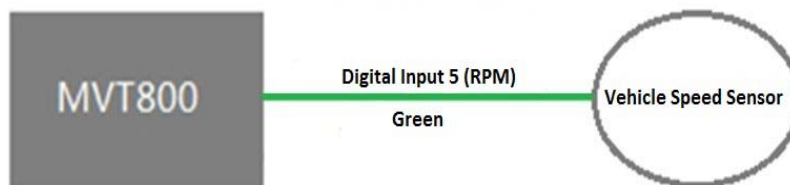
7.2.4 The Detection Port of High Level and Low Level Configuration



7.2.5 ACC and Door Detection

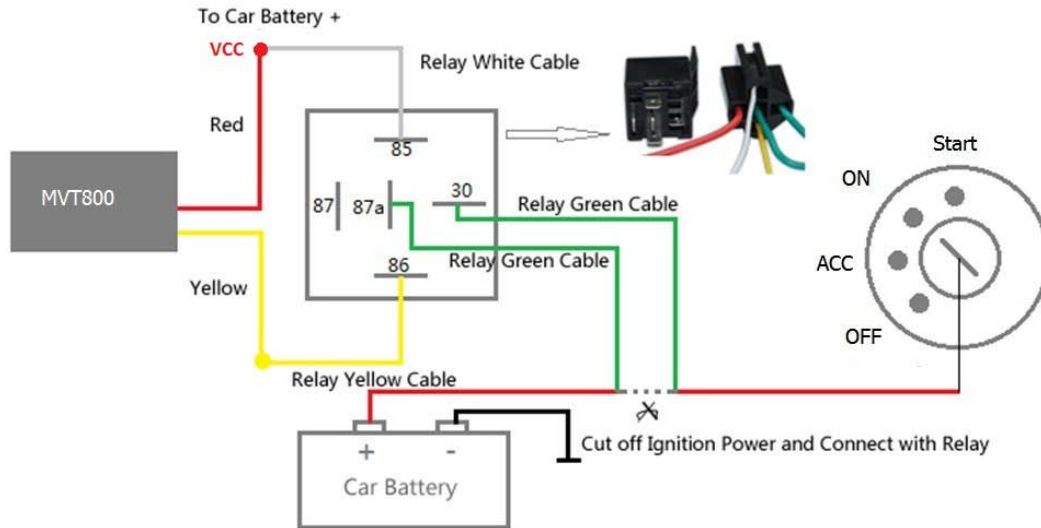


7.2.6 Signal of Vehicle Speed Sensor Detection

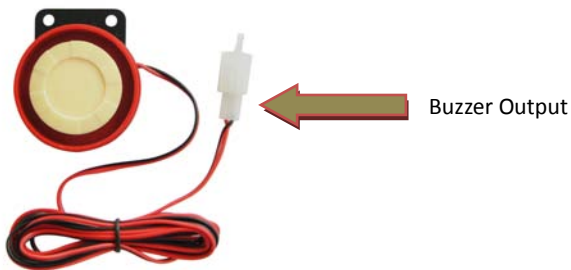


File Name:	MEITRACK MVT800 User Guide	Creator:	Meitrack
Project:	MVT800	Creation Date:	2013-03-03
		Update Date:	2013-04-17
Sub Project:	User Guide	Page:	24 of 25
Revision:	V1.5	Confidential:	External Documentation

7.2.7 Remote Control Stop Engine

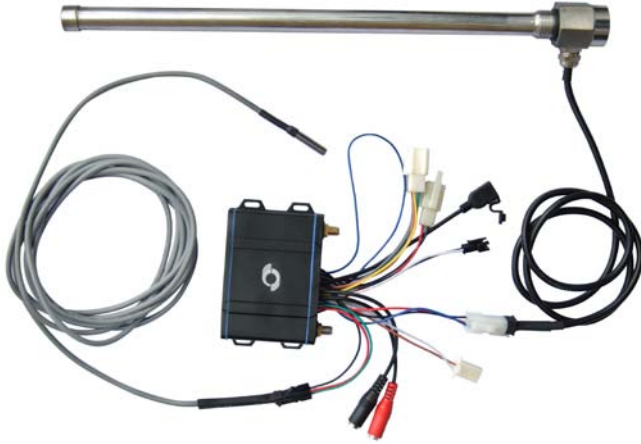


7.2.8 Buzzer Alarm (Optional)



File Name:	MEITRACK MVT800 User Guide	Creator:	Meitrack
Project:	MVT800	Creation Date:	2013-03-03
		Update Date:	2013-04-17
Sub Project:	User Guide	Page:	25 of 25
Revision:	V1.5	Confidential:	External Documentation

7.2.9 Detection Port of Temperature and Fuel --- Meitrack Protocol Only (Optional)



7.2.10 Port of Microphone and Speaker (Optional)



7.3 Mount the MVT800 Unit

If mounting required, there are 4 screw holes on the MVT800, 2 along either side that act as fixing points to the vehicle.



Please do not hesitate to email us at info@meitrack.com if you have any questions.