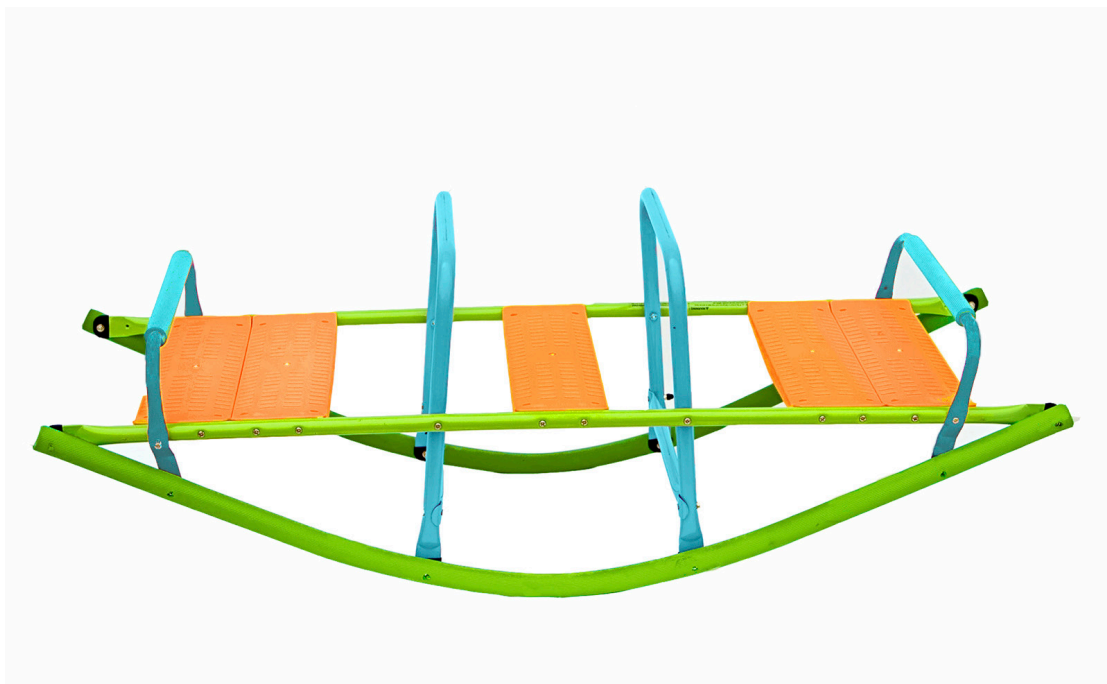




Pure Fun Rocker Seesaw

USER MANUAL

Model No.
9306RS



Age Recommendation:
4-10

Do not allow more than one person on this product at any time.
Adult supervision is required.
ADULT ASSEMBLY REQUIRED.

Please visit www.pureglobalbrands.com to register your product to ensure warranty coverage.

Please read all the instructions before using this product. Consult a physician
before beginning any exercise program or strenuous activity.



WARNING

The contents of this package are not suitable for children
under 3 years of age. Contains small parts which
may cause choking.

75 LBS PER SEAT MAXIMUM WEIGHT RATING



Pure Fun is a Trademark
of Pure Global Brands, Inc.

Customer Service



1 866 498 5269



customerservice@puregbi.com



IMPORTANT MESSAGE

PLEASE READ

WARNING

CHOKING HAZARD - Small Parts
NOT for children under 3 years of age.

WARNING

While every attempt is made to ensure the highest degree of protection in all equipment, we cannot guarantee freedom from injury. The user assumes all risks of injury due to use. All merchandise is sold on this condition, which no representative of the company can waive or change.



USER MANUAL

CUSTOMER SERVICE INFORMATION

Thank you for purchasing our **Pure Fun™ Rocker Seesaw**

At Pure Global Brands, we want all of our customers to be completely satisfied with their purchase. Please take time to review the contents of the product you have just received to make sure that all of the parts are included. If you find that any parts are missing or damaged, we will happily provide replacement parts at no charge within 30 days of purchase. Please keep in mind that for select damaged part replacement requests, we will require a photo for submission to our quality control office.

To order these parts, or if you have any other questions or concerns about this Pure Global product, please e-mail the Pure Global Brands, Inc. customer service department at: customerservice@puregbi.com or contact us at 1-866-498-5269. You can also visit our website at: www.pureglobalbrands.com

If you request replacement parts, please be sure to include the following information in your correspondence:

YOUR NAME

YOUR MAILING ADDRESS

YOUR EMAIL ADDRESS

RETAILER WHERE YOU PURCHASED PRODUCT

DATE OF PURCHASE

ORDER # (IF AVAILABLE)

PRODUCT MODEL #: 9306RS

SERIAL #

PRODUCT NAME: Rocker Seesaw

PART # (located in manual)

QUANTITY NEEDED

PICTURE OF DAMAGED PART(s) – SUBMIT VIA Email , Fax, or Mail

Again, thank you for purchasing a Pure Global Brands product.

Sincerely,

Customer Service

Pure Global Brands, Inc.

Phone: 1-866-498-5269

Email: customerservice@puregbi.com

8040 Belvedere Rd.

West Palm Beach, FL 33411



LIMITED WARRANTY

Pure Global Brands, Inc. warrants this product to be free from defects in workmanship and materials under normal use and conditions for the duration of the period outlined below FROM THE DATE OF ORIGINAL PURCHASE. This Limited Warranty is not transferable and is available only for the original purchaser of the Product.

The various components of the trampoline/enclosure are warranted against defects and workmanship for the following time period(s):

- **Steel Frame: 2 Years**
- **All Other Parts: 90 Days**

All warranty coverage extends only to the original retail purchaser from the date of purchase. Pure Fun's obligation under this Warranty is limited to replacing or repairing, at Pure Fun's option, the product at one of its authorized service centers. All products for which a warranty claim is made must be received by Pure Fun at one of its authorized service centers and accompanied by sufficient proof of purchase (photocopy of the original store receipt, indicating the date of purchase). All freight and handling fees are the responsibility of the consumer to pay, both to and from Pure Fun. All warranty claims must be pre-authorized by Pure Fun. Pre-authorization can be obtained by calling 866-498-5269. This warranty does not extend to any product or damage to a product caused by or attributable to freight damage, abuse, misuse, improper or abnormal usage, or repairs not provided by a Pure Fun authorized service center or for products used for commercial or rental purposes. This warranty does not cover ordinary wear and tear, weathering, failure to follow directions, improper installation, improper maintenance or acts of Nature (such as damage caused by wind, lightning, snow, water or ice). Weather damage, damage caused by unauthorized repair work or damage caused by improper use of the products are not covered by the product warranty. No other warranty beyond that specifically set forth above is authorized by Pure Fun.

PURE FUN IS NOT RESPONSIBLE OR LIABLE FOR INDIRECT, SPECIAL OR CONSEQUENTIAL DAMAGES ARISING OUT OF OR IN CONNECTION WITH THE USE OR PERFORMANCE OF THE PRODUCT OR OTHER DAMAGES WITH RESPECT TO ANY ECONOMIC LOSS, LOSS OF PROPERTY, LOSS OF REVENUE OR PROFITS, LOSS OF ENJOYMENT OR USE, COST OF REMOVAL, INSTALLATION OR OTHER CONSEQUENTIAL DAMAGES. SOME STATES DO NOT ALLOW THE EXCLUSION OR LIMITATION OF INCIDENTAL OR CONSEQUENTIAL DAMAGES. ACCORDINGLY, THE ABOVE LIMITATION MAY NOT APPLY TO YOU. THE WARRANTY EXTENDED HEREUNDER IS IN LIEU OF ALL OTHER WARRANTIES AND PURE FUN SPECIFICALLY DISCLAIMS ANY IMPLIED WARRANTY OF MERCHANTABILITY OR FITNESS FOR A PARTICULAR PURPOSE IS LIMITED IN ITS SCOPE AND DURATION TO THE TERMS SET FORTH HEREIN. SOME STATES DO NOT ALLOW LIMITATION ON HOW LONG AN IMPLIED WARRANTY LASTS. ACCORDINGLY, THE ABOVE LIMITATION MAY NOT APPLY TO YOU.

This warranty gives you specific legal rights. You may also have other rights, which vary from state to state.





WARNINGS

IMPORTANT PLEASE READ!

Please read these warnings and the information in this manual in its entirety. Failure to comply with the following instructions may increase the risk of serious injury and/or death:

- This unit must be assembled and disassembled by ADULTS ONLY.
 - This Rocker Seesaw is suitable for use by most children 4 to 10 YEARS OF AGE.
 - DO NOT exceed the MAXIMUM WEIGHT limit per seat of 75lbs (35kgs), regardless of age.
 - DO NOT install this equipment over concrete, asphalt, or any other hard or rough surface. The Rocker Seesaw should always be installed over an appropriate, stable surface (rubber mat, grass, etc).
 - ALWAYS locate this equipment on a stable, level surface AT LEAST 7 feet away from any structure, obstruction, or possible hazard(s) such as walls, pools, power lines, overhangs, other playground equipment, driveways, hard surfaces and/or roadways.
 - Children must be supervised at all times when using this equipment. DO NOT leave children unattended at any time.
 - DO NOT attach items to the Rocker Seesaw not specifically designed for this purpose. Especially in the case of jump ropes, chains, clotheslines, pet leashes and cables. These may cause a strangulation or physical hazard.
 - This Rocker Seesaw is NOT for adult or adolescent use.
 - This Rocker Seesaw is only designed for family residential use. It is NOT intended for commercial applications and/or use in public areas such as schools, parks, nurseries, day schools, day cares, etc.
 - DO NOT allow more than one child per seat on the Rocker Seesaw and/or Rocker at a time.
 - Instruct children to always be sure that the ground underneath the seesaw is clear of any persons, pets or obstructions before using.
 - DO NOT allow children to wear glasses or helmets when using the Rocker Seesaw.
 - Small children must be assisted by an adult in mounting and dismounting the seesaw seats.
 - DO NOT allow children to wear loose fitting clothing, clothing with straps/loops, backpacks or wear and/or hold accessories with straps or loops, or any article of clothing or accessory with sharp edges which may present a hazard or become snagged or caught on the Rocker Seesaw during use. Serious injury and/or accidental strangulation may occur.
 - DO NOT allow people and pets to stand or sit in or near the Rocker Seesaw play area when the item is in motion.
 - DO NOT allow children to climb or hang from the steel tubing – this can cause serious injury.
 - This product is not to be used in conjunction with pools, spas, or other bodies of water.
 - Children must ALWAYS remain securely seated, firmly grasping the handrails, and in the forward facing position when rocking. Do not lay down, rock while standing, or sit backwards on the seats.
 - DO NOT use in adverse weather conditions, while the seats are wet, or in poorly lit conditions.
 - ALWAYS secure the Rocker Seesaw against unauthorized and unsupervised use.
 - ALWAYS wear the appropriate footwear (i.e. closed toe shoes) when using the Rocker Seesaw.
 - Before each use of this product, inspect and replace any worn, defective or missing parts. Although the Rocker Seesaw is made to take a lot of wear, over time parts may need to be replaced. It is important to check the Rocker Seesaw to ensure the Frame, Seats and Handrails are steady and all parts are in good condition. If any loose, cracked, missing, or otherwise damaged components are found, cease use of this item immediately and secure it from unauthorized use until the issue has been corrected and/or replacement parts obtained.
 - Please read and refer to other warnings and use information in the Rocker Seesaw instructions before use.
- Dispose of all packaging materials safely and per local ordinance.**



Please visit: www.pureglobalbrands.com for any important product information updates and/or additional safety warnings before assembling or using this product. Use search word: **9306RS**

When you are ready to start, make sure that you have the correct tools at hand, and adequate space for assembly. Please refer to the table for part descriptions and numbers. The assembly instruction uses these descriptions and numbers as reference.

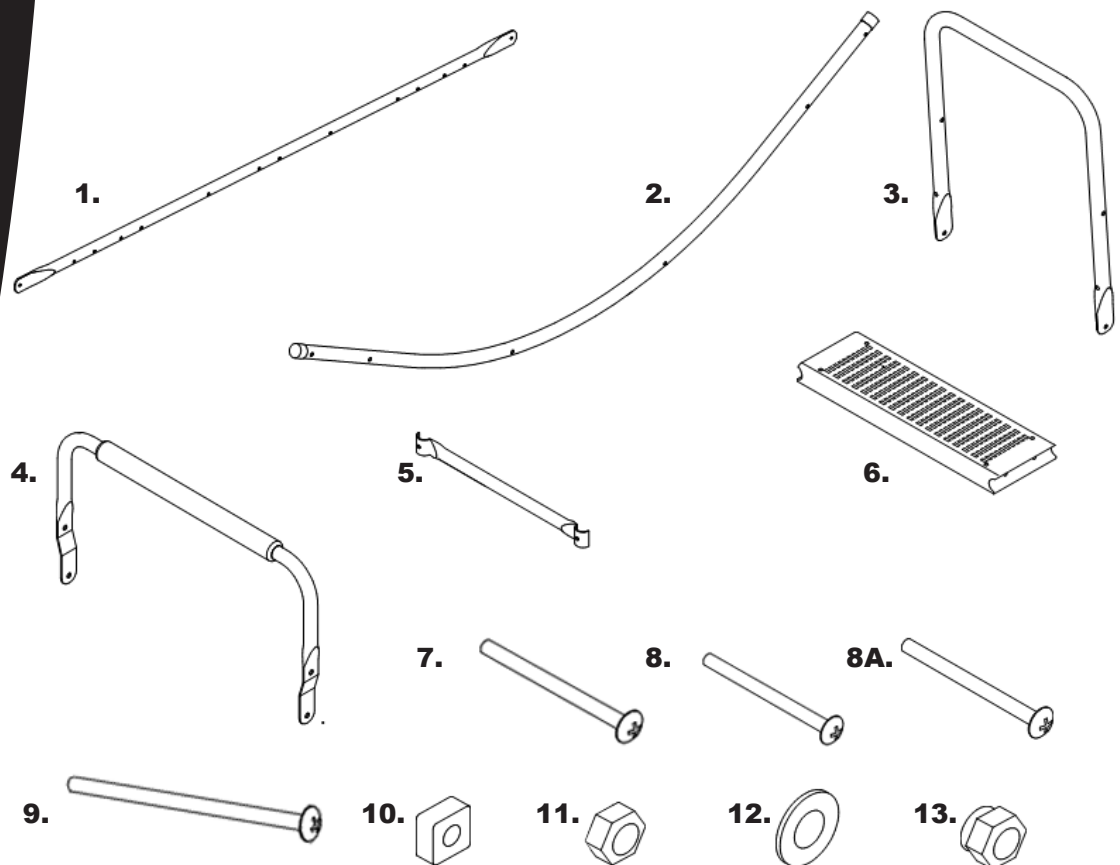
Make sure you have all parts listed. If you are missing any parts, please contact customer service at: customerservice@puregbi.com or by calling 1-866-498-5269 (9am-5pm, M-F).

IMPORTANT: USE GLOVES TO PROTECT AGAINST PINCH POINTS DURING ASSEMBLY.

Enclosed are the current specifications and product features available at time of printing, however, changes may be made in equipment, availability, specifications and features without notice.

**Tools Required: 1. Philips Head Screwdriver
2. Spanner Wrench**

| Part No. | Description | QTY | Part No. | Description | QTY |
|----------|----------------------------------|-----|----------|----------------------------------|-----|
| 1 | Base Rails | 2 | 8 | M6 x 1.375" Screws (Seats) | 16 |
| 2 | Foam Rocker | 2 | 8A | M6 x 1.5" Screws (Center Bottom) | 8 |
| 3 | Handle Tube | 2 | 9 | M6 x 2" Screws (Handle Tops) | 4 |
| 4 | Backrest | 2 | 10 | Square Nuts | 20 |
| 5 | Footrest Tube | 2 | 11 | Hex Nuts | 20 |
| 6 | Seats | 5 | 12 | Round Washers | 12 |
| 7 | M6 x 1.625" Screws (Foam Rocker) | 12 | 13 | Safety Caps | 20 |



STEP 1

PARTS NEEDED:

Base Rails (1)
Handle Tubes (3)
Footrest Tubes (5)
Seats (6)
Square Nuts (10)
M6*1.375" Screws (8)
M6*1.5" Screws (8A)
Safety Caps (13)

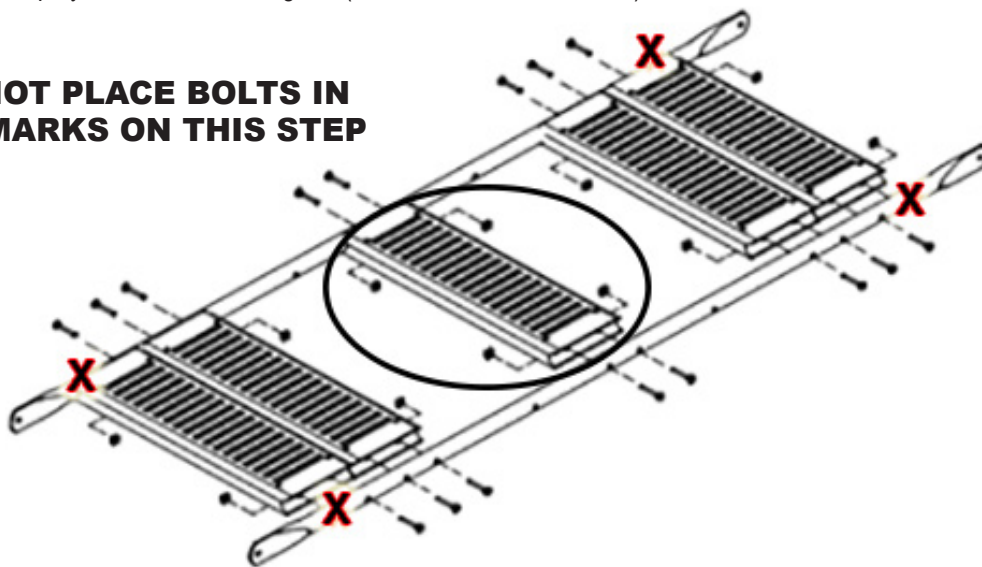
A. Assemble Seats to Base Rails

Lay the 2x Base Rails (1) side by side and place 1x Seat (6) in between these rails. It is recommended that you start from the center of the rails, (circled below).

Place 4x Square Nuts (10) into the slots in the underside of the Seat. Next, keeping the holes directly opposite these nuts lined up to the holes in the Base Rails, hold each Square Nut in place with your finger (or a pair of needle nose pliers) and thread 4x M6*1.375" (8) Bolts through the rails and into the square nuts. Ensure that the square nut does not spin while you begin to tighten this connection. **DO NOT FULLY TIGHTEN THESE UNTIL ALL SEATS ARE IN PLACE.**

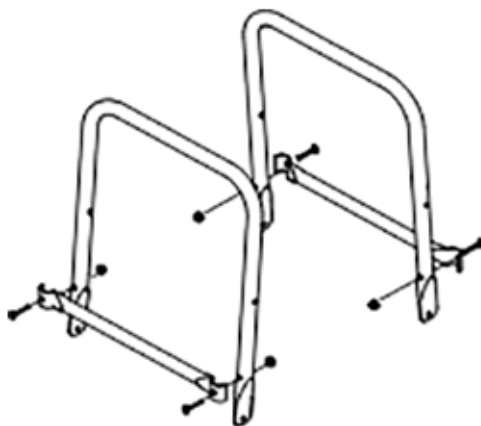
Repeat the above steps for the remaining 4x Seats, but **DO NOT** place bolts where the "X" marks are displayed in the below diagram (the end holes on the seats).

**DO NOT PLACE BOLTS IN
"X" MARKS ON THIS STEP**



B. Attach Handle Tubes to Footrest Tubes

Locate the 2x Handle Tubes (3) and the 2x Footrest Tubes (5). Gently flex the Handrails so that the screw holes in the Footrest Tubes line up to the corresponding holes in the Handles. Attach with 4x M6*1.5" Screws (8A) and 4x Hex Nuts (11). Once tightened, cover the exposed bolt ends with 4x Safety Caps (13).



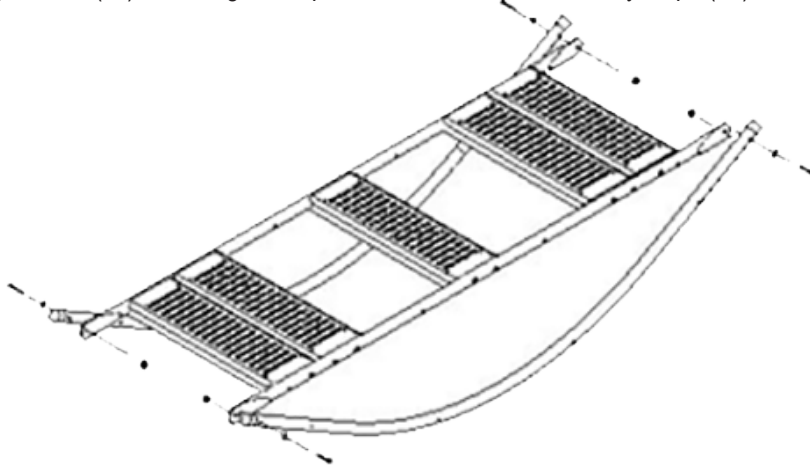
STEP 2

PARTS NEEDED:

Foam Rockers (2)
Backrests (4)
Washers (12)
M6*1.625" Screws (7)
M6*1.5" Screws (8A)
M6*2" Screws (9)
Hex Nuts (11)
Safety Caps (13)

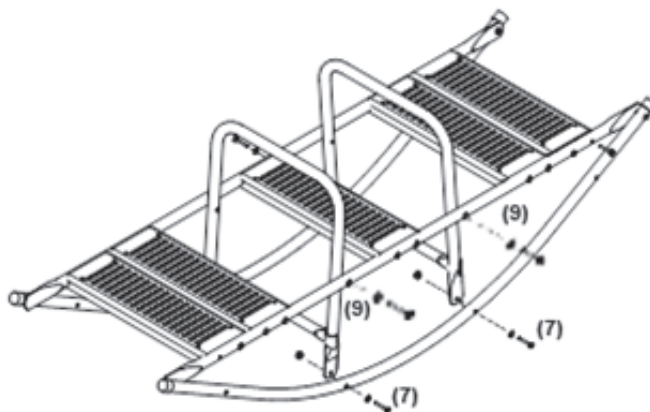
C. Assemble Rocker Base

Attach the Foam Rockers (2) to the Assembled Seat Frame with 4x M6*1.625" Screws (7). **IMPORTANT:** Place 1x Washer (12) on each M6*1.625" Screw **before** threading these through the Foam Rockers. Once through the other side of the Rockers, secure the Screws with 4x Hex Nuts (11), covering the exposed bolt ends with 4x Safety Caps (13).



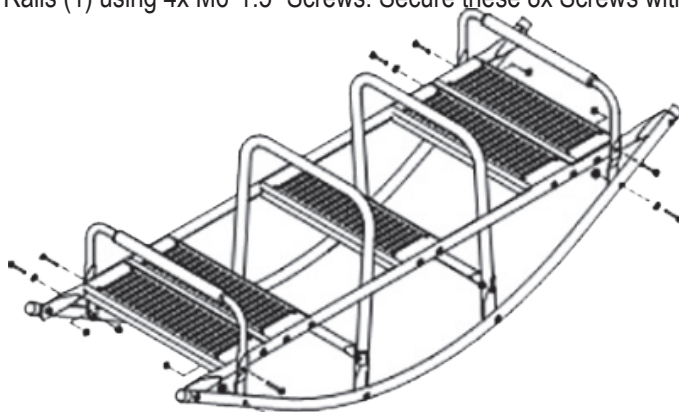
D. Attach Assembled Handle Tubes / Footrest to Foam Rockers

Attach each Handle Tube base to the Foam Rockers (2) with 4x M6*1.625" Screws (7). **IMPORTANT:** As with all connections to the Foam Rockers, place 1x Washer (12) on each of the Screws **before** threading through the Rocker. Secure this assembly with 4x Hex Nuts (11) and 4x Safety Caps (13). Next, attach the tops of the Handle Tubes to the Base Rails (1) with 4x M6x2" Screws and 4x Washers (12). Secure this assembly with 4x Hex Nuts (11) and 4x Safety Caps (13).



D. Attach Backrest to Rockers

Line up the Backrests (4) to the remaining holes in the Seats (5). **IMPORTANT:** Make sure that the Backrest tube bar goes on the outside of the plastic seat and on the inside of the Foam Rocker (2), as shown below. Attach the base of this assembly to the Foam Rocker (2) using 4x M6*1.625" Screws (being sure to place a washer on the screw first) and 4x Washers (12). Next, attach the upper holes in the Backrests to the Base Rails (1) using 4x M6*1.5" Screws. Secure these 8x Screws with 8x Hex Nuts (11) and 8x Safety Caps (13).



CARE & MAINTENANCE

Your Rocker Seesaw is designed to be very low maintenance.

If any part of the seesaw requires cleaning, simply wipe with a damp cloth.

Regularly check to see if the steel tubes, seats, backrests and other parts are tightened and completely secure. Replace worn & damaged parts if found and if necessary, secure from use until replacement parts can be obtained.

If the paint is chipped, we recommend you lightly rub the damaged area and cover using a non-toxic enamel paint.

IMPORTANT: While no regular maintenance is required, you must inspect the seesaw before each use and replace any worn, defective, or missing parts. The following conditions could represent potential hazards: Missing, improperly positioned, or insecurely attached frame parts, Missing, improperly secured or damaged seats, and/or a bent or broken rocker, Cease using seesaw immediately and secure it against unauthorized use if any of these conditions are present.

FREQUENTLY ASKED QUESTIONS

Question: “How should I clean my seesaw?”

Answer: YOU SHOULD CLEAN THE Seesaw WITH A SOLUTION OF WARM WATER AND NON-CORROSIVE/ABRASIVE SOAP. DAMPEN A RAG WITH THIS SOLUTION AND WIPE COMPLETELY DRY BEFORE USING.

Question: “Is there any maintenance I need to do for my seesaw?”

Answer: YOU SHOULD ALWAYS DOUBLE CHECK TO MAKE SURE ALL YOUR BOLTS ARE TIGHT AND SECURE, AND THAT THE SEATS ARE SECURELY IN PLACE BEFORE USE.

Question: “A seat seems loose, what should I do?”

Answer: MAKE SURE THE BOLTS/NUTS UNDER THE PLASTIC SEAT ARE SECURE.

Question: “Something was missing from the packaging,” “I need to purchase a replacement part” or “I discovered a damaged piece.

What should I do?”

Answer: CONTACT PURE FUN CUSTOMER SERVICE. YOU MUST HAVE YOUR PROOF OF PURCHASE AND/OR ORDER CONFIRMATION AVAILABLE TO BE CONSIDERED FOR WARRANTY REPLACEMENT. YOU MUST REPORT MISSING PIECES WITHIN 30 DAYS FROM DATE OF PURCHASE. PLEASE BE AWARE THAT UNDER OUR LIMITED WARRANTY, FOR SOME PARTS WE REQUIRE A PICTURE OF THE DAMAGED ITEM AND/OR RETURN OF THE ITEM TO OUR QUALITY CONTROL OFFICE FOR REVIEW.

