

GIMA LED COLPOSCOPE

• 29600 COLPY - GIMA LED COLPOSCOPE

Easy to use LED colposcope mounted on a 5 wheels base (Ø 41 cm).

COLPOSCOPE TECHNICAL SPECIFICATIONS

Magnifying: 8.2X with standard 10X eyepieces
Field: 35 mm
Optic system: stereo with inter-pupil adjustment and optic head at 45°
Illumination: LED bulb
Working distance: 28 cm
Interpupillary distance: 48-77 mm
Green filter
Operating voltage: 100-240V, 50-60 Hz
Norms: CLASS I Type B - IEC 601-1 CE 93/42/EEC.
Made in Italy

• 29601 CAMERA CONNECTOR for 29602

To connect a camera with standard "C mount" to GIMA colposcope.

• 29602 MC1 PAL CAMERA - for colpy

Fit the camera to one eyepiece and connect the video cable to an high definition monitor. Need 29601.

• 29603 DL1 DIGITAL - USB 2.0 CAMERA - for colpy

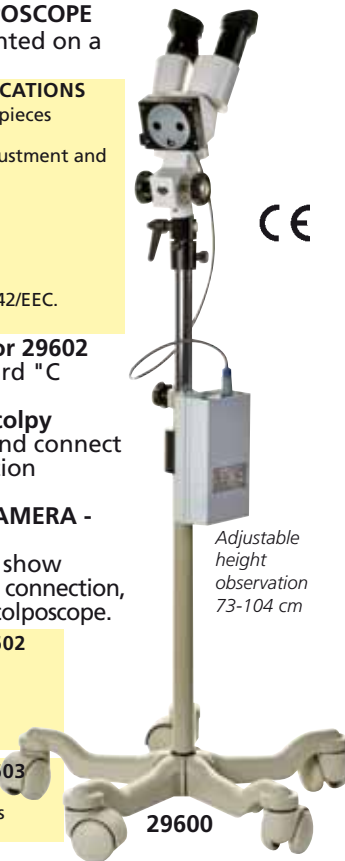
Fitted on one eyepiece allows to show image on the monitor through USB connection, becoming an high definition videocolposcope.

TECHNICAL SPECIFICATIONS - 29602

Camera sensor: 1/3 CCD
Resolution: 480 lines
Power: 230 V - 50/60 Hz
RCA video composite output 3 m cable
Head size: 38x40x70 mm

TECHNICAL SPECIFICATIONS - 29603

CMOS 1/3" sensor
Max resolution pictures 1280x1024 pixels
Max resolution movie 440x480 pixels



Adjustable height observation 73-104 cm

29600

ALLTION LED COLPOSCOPE

• 29612 ALLTION LED COLPOSCOPE - 9X

• 29613 ALLTION LED COLPOSCOPE

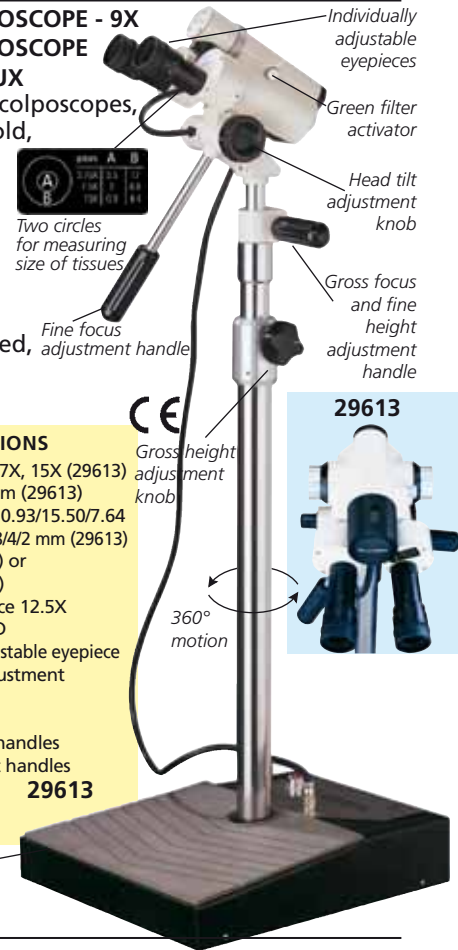
3,75X, 7X, 15X - > 28,000 LUX

High quality and complete colposcopes, with excellent optics and cold, longlife white light.

Compact, lightweight and easy to use offers superior quality at a competitive price. A special universal Teflon® ball joint gives to user 360° easy motion for gross focus. Comes assembled, ready for use.

TECHNICAL SPECIFICATIONS

Magnification 9X (29612) or 3,75X, 7X, 15X (29613)
Focus length: 316 (29612) or 300 mm (29613)
Field of view: diameter 22 mm or 30.93/15.50/7.64
Depth of field: > 4 mm (29612) or 18/4/2 mm (29613)
Light intensity: > 10.000 lux (29612) or > 28.000 lux (29613)
Interchangeable adjustable eyepiece 12.5X
Illumination: longlife 5.9V / 5W LED
Superior optics with individually adjustable eyepiece
Built-in rheostat for brightness adjustment
Easily changeable, LED bulb
User-selectable built-in green filter
Two (gross/fine) focus adjustment handles
Two (gross/fine) height adjustment handles (838-1194 mm)
Smooth action control
Main Power: 110V/220V



Two circles for measuring size of tissues

Fine focus adjustment handle

Gross height adjustment knob

360° motion

29613

Roller base for easy movement

DIGITAL LED VIDEO COLPOSCOPE

• 29620 COLPRO LED VIDEO COLPOSCOPE

COLPRO LED digital video colposcope is known for its ruggedness, versatility, precision and ease of use. These devices incorporate the latest digital signal processing technology to provide high resolution images for effective colposcopy diagnosis & treatment.

Wide auto focus range: automatically focuses on the object up to 30 cm regardless of the patient movement during procedure.

Electronic green filter (5 steps): enhances vascular discrimination without any light loss.

Variable light intensity (5 steps) and colour contrast (5 steps)

Continuous zoom: 1-45X zoom range allows you to examine the cervix at a desired level of magnification.

E-flip & mirror image: powerful functions which ensure extended attention to the minutest details.

High MCD super bright shadowless light: improves the quality of image which has 6000° K color temperature to produce natural color of tissues & vessels.

1,200,000 pixels: responsible for unmatched & crystal clear image.

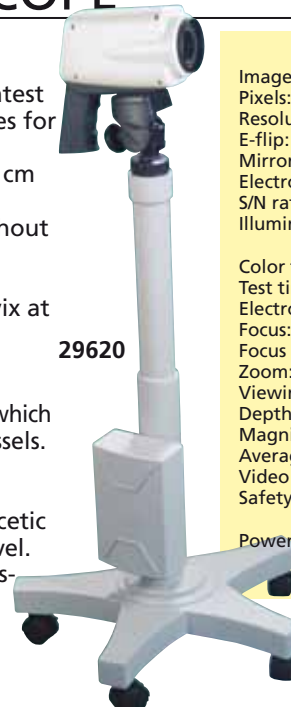
It delivers excellent image quality in its class.

Magnification & real time display: real time display of magnification & acetic acid test timer helps to see the best image at desired magnification level.

2-video output: output can be taken on two different video monitors-computers simultaneously.

Universal connector: for any monitor with Y/C or BNC video input.

• 72708 SONY LMD LCD MEDICAL MONITOR - 15" - support included



29620

TECHNICAL SPECIFICATIONS

Image processor: Sony colour CCD
Pixels: 1,200,000
Resolution: 825 TV Lines
E-flip: yes
Mirror image: yes
Electronic Shutter: automatic
S/N ratio: >48 db
Illumination: high MCD super bright white shadowless LED light
Color temperature: 7000° K
Test timer: yes
Electronic green filter: yes (5 steps)
Focus: automatic or manual
Focus distance: 20-30 cm
Zoom: 1-45X
Viewing area: Ø 170 mm - 10 mm
Depth of view: Ø 200 mm - 5 mm
Magnification display: Yes
Average LED lamp life: 20,000 hours
Video output: SD: 1X Y/C, 1X BNC composite
Safety standard: complies to IEC 60601 including EMC
Power supply: 100-240 VAC, 50/60 Hz
Made in Australia

CE 1293 EMI/EMC tested

COLPOSCOPY IMAGE, VIDEO & PATIENT DATA MANAGEMENT SOFTWARE

• 29621 COLPOSCOPY SOFTWARE FOR COLPRO AND AC-2311 COLPOSCOPE

A powerful IT tool in the hands of our busy gynaecologists to manage not only the videos, images, clinical data and details of the patients, but also to provide them an opportunity to store, edit, burn on CD or DVD, print the detailed reports and use graphical data for presentation. Multilanguage software (GB, ES, IT, DE, FR, PT). Footswitch for capturing and saving images.

Compatible with Windows 7 (64-bit) / XP / Vista Operating Systems

Easy to install and maintain

Password protected log-in to ensure data privacy

Enormous level of live recording facility and image capturing at very high pixels simultaneously with just a click

Various kinds of colposcopy video clippings, movies, images for reference and education purpose have been incorporated in the software. Print out of reports with relevant details can be prepared for future follow-up of the patient.

Comparison mode with linked images

Forensic examination & sexual abuse

Leep/LLETZ approach to treat high grade dysplasia

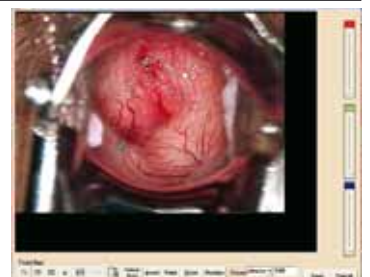
Cryo surgery report

Statistical data representation with graph

Multi format 1-2-3-4 images diagnosis report

HAMMOND graph (biopsy graph)

Marking and highlighting



SONOST 3000 - ULTRASOUND BONE DENSITOMETER

• 33996 SONOST 3000 with integrated software Waterless Ultrasound Bone Densitometer (BMD).

Sonost 3000 is a portable, economic solution for evaluating the risk of osteoporotic fracture. Its high accuracy assists in the first diagnosis of osteoporosis monitoring bone changes.

It provides fast, convenient and easy-to-use informations on bone quality and fracture risk.

It can be connected to a keyboard to a monitor for data reading and to an external printer for A4 printing

Main features:

- superior precision
- full dry and stand alone system
- fast measurement (only 15 seconds)
- auto positioning probe
- permanent coupling pad
- over 10,000 memories

• 33250 THERMAL PAPER 57 mm x 25 m (pack of 5 rolls)



Easy to use
Multilanguage
software
(GB, FR, IT,
ES, DE)

No radiation hazard

Integrated printer

TECHNICAL SPECIFICATIONS

Measurement site:	Calcaneus (Heel bone)		
Scan Time:	15 seconds		
Measurement:	Estimated heel BMD and Bone Quality Index (BQI) Obtained from measured Broad band Ultrasound Attenuation (BUA) and Speed of Sound (SOS)		
Estimated Index:	SOS (C.V.%)	BUA (C.V.%)	BQI (C.V.%)
In Vivo:	0.2	1.5	1.5
Transducer:	25 mm - 100 mm		
Separation range:	Automatic adjustment		
Storage capacity:	10,000 patient information		
Coupling method:	coupling gel (water not used)		
Display:	6.4 inch TFT LCD (65536 colour)		
User Interface:	Touch screen USB for connection to mouse or keyboard		
Printer:	Thermal Printer		
Operating voltage:	AC 100V~240V - 50/60Hz - 130W		
Dimension:	30x62x39 cm		
Weight:	12 kg		

AC-2311 LED VIDEO COLPOSCOPE WITH CAMERA

• 29624 AC-2311 LED VIDEO COLPOSCOPE WITH CAMERA

- Superb optical features:

The excellent optical design allows:

- 1 - high resolution
- 2 - real 3-dimensional precise image reproduction
- 3 - large depth of field
- 4 - wide field of view
- 5 - good contrast

Apochromatic optics design can correct the chromatic aberration of three types of coloured light effectively. It ensures the reduction and saturation of image colour and improves resolution, contrast and view depth of image.

- 3-step magnification:

3-step magnification (3.75X - 7.5X - 15X) provides larger magnifying range and more selection from lowest magnification for an overview to high magnification for precise and close inspection and treatment.

- Two optical circles for quick measuring size or tissue

- Integrated green filter

It can help to recognize blood vessels

- LED illumination

LED coaxial illuminator provides pure white colour light similar to sunlight to show real colour. Bulb life over 10,000 hours/10 years for long lasting performance. It saves your cost for the spare bulbs & electric charge.

- Integrated camera

The images from integrated video camera can be transferred directly into a monitor or a TV, into a computer with USB adapter or stored into a hard disk recorder.

- Ergonomic design for comfortably long time precision operation

It is supplied completely assembled and ready for use

• 29621 COLPOSCOPY SOFTWARE - see page 139



Compact, light weight base with 3 wheels for easily move.
Colposcope weight only 11 kg.

TECHNICAL SPECIFICATIONS

Total magnification 3.75X, 7.5X, 15X
300mm focal length
Field of View: Ø 79 mm, 39 mm, 19 mm
Depth of Field: 4.5 mm, 1.13 mm, 0.76mm
Light intensity >25,000 LUX
Individually adjustable eyepiece 16.7X
Right eyepiece with built-in two circles to measure the size of the problem you see

Built-in rheostat for brightness adjustment
User-selectable built-in green filter for enhanced contrast
LED bulb is easily changeable
Working height: 950 mm to 1,250 mm
Fine focus adjustment handles
Two (Gross/Fine) height adjustment handles
Main power supply: 100 V to 230 V

COLOUR DISPLAY, SINGLE OR TWINS FOETAL MONITORS



- 29530 SINGLE FOETAL MONITOR - FC1400
 - 29531 TWINS FOETAL MONITOR - FC1400
 - Superior data display**
 - 320x240 color LCD viewer (4.3 inch)
 - FHR and automatic fetal movement detection
 - 12 hours of memory capacity
 - recommended after week 30
 - Extreme data accuracy and access**
 - high-accuracy and wide detection area
 - easy on-screen scrolling function
 - durable watertight probes, 1 MHz
 - Printout**
 - CTG analysis printing
 - both standard and A4 size paper usable
 - normal fax paper usable
 - high speed printout (50 cm/min)
 - Other advantages**
 - wireless central monitoring up to 8 beds (Option)
 - PC compatible
 - internal battery lasting 2-hours (Option)
 - power adapter 100-240 V, 50-60 Hz
- See below for accessories



COST-EFFECTIVE SINGLE FOETAL MONITOR



- 29520 FOETAL MONITOR GIMA FC 700
- Cost-effective single fetal monitor
- Extreme ultrasound doppler sensitivity**
 - high-accuracy with 1 Mhz frequency
 - automatic/manual Foetal Movement detection
 - auto NST (Non-stress test) function from 10 min. to 1 hour.
- Data printout**
 - CTG analysis printing
 - A4 size chart paper with perforation line
 - plain thermal fax paper usable
 - print speed 1, 2, 3 cm/min
- Easy-to-use**
 - one-touch operation and easy setup
 - alarm function (FHR high-low)
 - s/w upgrade via internet

ANALYSIS FUNCTION FOR 29520, 29530, 29531

- Period: test period
- Average baseline FHR (bpm)
- Number of UC (frequency / h)
- Number of acceleration (frequency / h)
- Number of deceleration (frequency / h)
- Late DEC: number of late deceleration
- Early DEC: number of early deceleration
- Variable DEC: number of variable deceleration
- TACHY: moderate (>160 bpm): period of that FHR is between 160~190 (minutes)
- TACHY: severe (>190 bpm): period of that FHR is over 190 (minutes)
- BRADY: moderate (<110 bpm): period of that FHR is between 90~110 (minutes)
- BRADY: severe (<90 bpm): period of that FHR is lower than 90 (minutes)

STANDARD ACCESSORIES (29520, 29530, 29531)

Doppler transducer (2 for Twins Foetal Monitor)
Toco transducer, Event maker, Gel, Printer paper, Belts, Manual

TECHNICAL SPECIFICATIONS FOETAL MONITORS (29520, 29530, 29531)

Doppler	320x240 Colour LCD (29531)
Pulsed Doppler	Indicators
Ultrasound frequency: 1.0 MHz	Heart rhythm with signal quality
Intensity: <10mW/cm ²	Alarm, printing on/off state
FHR range: 50-240 bpm (± 1 bpm)	AC power
Fetal movement	Set-up
Detection source: Ultrasound	Alarm upper/low limit value
pulsed doppler	Record speed, paper grid, Fetal
UC	Movement On/Off, Time/Date,
Frequency response: DC 0.5 Hz	Print contrast, Auto print period
Reference (zero) control	Power
Measurement range: 0~99	INPUT: AC 100-240V (50/60 Hz)
units	296(W)x305.5(H)x92.5(D)mm,
Printer	Approx 2.9kg (29520),
Thermal array type	3.2kg (29530-29531)
Print speed: 1, 2, 3 cm/min	External link
Paper feeding function	RS-232C: Program Download
Display	
7-segment LED (29520)	
2 channels (HR, UC) (29520)	

For 29520	For 29530-31	ACCESSORIES FOR FOETAL MONITORS
29522	29528	Paper roll - 215 mm x 23 m (29522), 152 mm x 25 m (29528)
29523	29532	Doppler transducer - spare
29524	-	UC/Toco transducer up to S/N FF07XXX
29529	-	UC/Toco transducer since S/N FF08XXX
-	29533	Toco transducer - spare
29519	29519	Trolley with 2 baskets (adjustable height)
-	29534	Battery NI-MH, 12V, 2600 mA
33747	33747	AC adaptor
29525	29525	Belt 5.3x148 cm
For 29520	For 29530-31	WIRELESS CENTRAL STATION FOR FOETAL MONITORS
29527	29527	Central station (PC, monitor, software, wireless, connection kit) to manage up to 8 monitor



GIMA FOETAL POCKET DOPPLERS - MADE IN U.K.



• **29503 GIMA FOETAL DOPPLER D2003 with display**
Pocket foetal doppler with same specification as code 29502 but with built-in foetal heart rate processing. Foetal heart rate (FHR) is displayed on a large LCD display whilst internal signal process minimises noise artefacts.

• **29505 GIMA FOETAL DOPPLER D2005 with display and waterproof probe**

Same as code 29503 but waterproof probe and sealed electronics.

All units are supplied in a nice bag with a tube of coupling gel and user manual in English, Spanish, French, German, Italian, Greek, Portuguese.



• **29512 ON/OFF MEMBRANE SWITCH for codes 29503, 29505**

TECHNICAL SPECIFICATION (CODES 29502 - 29503 - 29505)

Ultrasound	Frequency: 2 MHz continuous wave Transducer: 2 crystal narrow beam Output power: <10mW/mm ² SATA Audio Response 300Hz -1 KHz autocorrelator (only code 29503 and 29505)
FHR (Fetal heart rate):	50-210 bpm (29503, 29505) 60-210 bpm (29502) resolution ± 1 bpm, accuracy ± 2 bpm
Unit Controls	Keys: 1 Key (for unit on/off) Controls: rotary volume
Indicators:	3 digit FHR LCD display (codes 29503, 29505) FHR pulse icon (codes 29503, 29505), Battery low icon
Power supply	Battery 9 V Alkaline Manganese Expected battery life: 8 hours
Output	Headset: Audio output to optional headset Serial: RS232 interface (codes 29503, 29505)-jack 35 mm
Material:	ABS / Noryl
Size:	150 mm by 75 mm Weight: 295 g (with transducer)
Classification:	Class I Type B - IEC 60601-1 CE 0120
Warranty:	2 years (probe and cable included)
Made in UK	

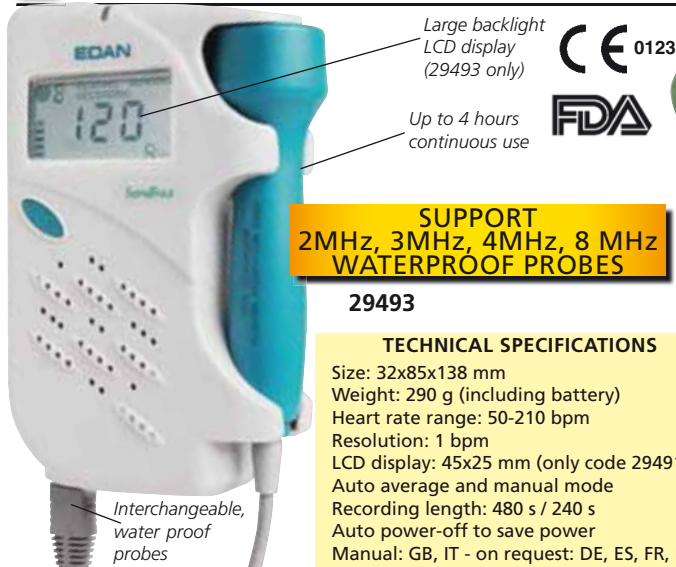
• 29502 GIMA FOETAL DOPPLER G2002

Small, lightweight, high sensitivity pocket Doppler, with 2 MHz foetal probe, ideal for General Practitioner's or Midwife's use for routine antenatal foetal detection.

Pocket Doppler can be used to detect the beating foetal heart from about 10th week of gestation. It may be used to locate the position of the placenta, thus aiding in the early diagnosis of placenta praevia, to survey blood flow of the umbilical cord and to diagnose multiple pregnancies. Foetal signals are easily located using the lightweight narrow beam transducer while internal signal processing minimizes noise artefacts. Audio foetal heart signals are available to the user via the built-in loudspeaker or option headset, with output level controlled by rotary volume control.

• **29511 ON/OFF MEMBRANE SWITCH for code 29502**

SONOTRAX DOPPLERS



**SUPPORT
2MHz, 3MHz, 4MHz, 8 MHz
WATERPROOF PROBES**

29493

TECHNICAL SPECIFICATIONS

Size: 32x85x138 mm
Weight: 290 g (including battery)
Heart rate range: 50-210 bpm
Resolution: 1 bpm
LCD display: 45x25 mm (only code 29491-93)
Auto average and manual mode
Recording length: 480 s / 240 s
Auto power-off to save power
Manual: GB, IT - on request: DE, ES, FR, PT.

BABY SOUND GIMA DOPPLER



• **29506 BABY SOUND GIMA FOETAL DOPPLER with display and interchangeable 1MHz probe**
- portable and lightweight
- built-in speaker to hear fetal heartbeats
- numeric and trend curve display for FHR
- automatic power-off function
- backlight LCD display
- date, time, battery status display
- audible & visual FHR alarm
- 8-hour data storage
- audio-out interface
- fetal monitor DSP technology
- high-sensitivity probe
- 1 MHz or 2/2.5 working frequency
- store and recall FHR, up to 16 hours of FHR date storage
- recording function

**SOFTWARE TO SAVE
DATA ON PC**

It allows hearing regularly the heartbeat of a foetus since 20 weeks, and warns in case of serious problems of the fetus (can monitor FHR during 10-12 weeks not regularly). For home and hospital use. Supplied with gel bottle, 3 AA batteries and user manual.

• **29507 2.0/2.5 MHz DOPPLER PROBE**

• **29508 1 MHz FOETAL MONITOR PROBE**

The Fetal Doppler can be used as a portable Fetal Monitor if it works with 1MHz Fetal Monitor probe. It is suitable for long-term monitoring and will be more accurate than with the Doppler probe.

TECHNICAL SPECIFICATION

Ultrasound working frequency:	1MHz $\pm 5\%$	
Fetal heart rate:	range: 50-210 bpm resolution: 1 bpm accuracy: ± 2 bpm high limit: 160 bpm	low limit: 120 bpm
Alarm:	high limit: 160 bpm	
Ultrasound intensity:	< 5 mm/cm ²	
Dimension:	145x74x29 mm	
Power supply:	3 AA Batteries	Weight: 350 g



GIMA code	DOPPLERS AND INTERCHANGEABLE PROBES - LATEX FREE
29490	SONOTRAX LITE DOPPLER - without probe - with bag
29491	SONOTRAX BASIC DOPPLER - with display - without probe - with carrying bag
29493	SONOTRAX PRO II DOPPLER with backlit display built-in audio recorder and rechargeable batteries with battery charger - without probe - with carrying bag
29496	2MHz waterproof probe - gynaecology
29497	3MHz waterproof probe - gynaecology
29498	4MHz waterproof probe - vascular
29499	8MHz waterproof probe - vascular

DISPOSABLE RECTOSCOPE AND ANOSCOPE

• 25953 F.O. ILLUMINATION HEAD

This head perfectly fits and illuminates the disposable anoscopes, rectoscopes, proctoscopes for GIMA, HEINE, WELCH ALLYN, GPS. It can be connected to a light source by a F.O. cable or to a LED illumination system. See at page 164 - 165.

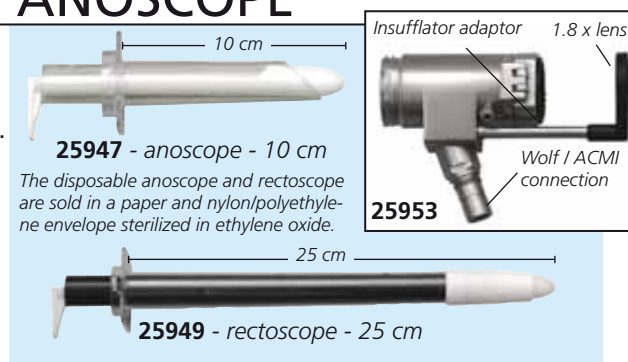
• 25947 DISPOSABLE ANOSCOPE - sterilized - box of 60

Length 10 cm, with stylet diameter of 17 mm, suitable for treatment of haemorrhoids.

• 25949 DISPOSABLE RECTOSCOPE - sterilized - box of 50

Length 25 cm, with stylet diameter of 17 mm, scale in cm, illumination in distal exit thanks to the opaque black tube placed inside the transparent body which enables the light to shine without shadow.

Disposable proctoscope see at page 152.



LIGHTING SYSTEMS: LIGHT SOURCE OR ILLUMINATED HANDLE



LIGHTING SYSTEMS

All products in this page are supplied with Acmi/Wolf light connection. To bring the light to these connection it is necessary to buy a Wolf adaptor (30841) a F.O. cable (30818-30826) a light source adaptor (30830) and a light source (30801-30802). See page 164-5.

To better hang the instruments during the use we suggest below handle that can be placed between the instrument and F.O. cable.

• 30798 HANDLE for Ano/Procto/Rectoscope and Sigmoidoscopes. Need light source

Alternatively you can choose a more economic solution, for illumination, inclusive of handle

• 30799 ILLUMINATED HANDLE 6.0 VOLT - HALOGEN BULB

Works as an independent light source for F.O. instruments. Direct connection to all F.O.

instruments in this page.

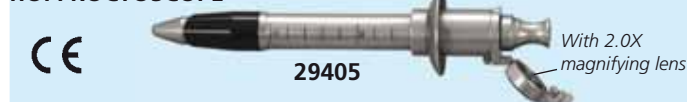
• 30800 HALOGEN BULB - spare for 30799

F.O. ANOSCOPES, PROCTOSCOPES

F.O. ANOSCOPES

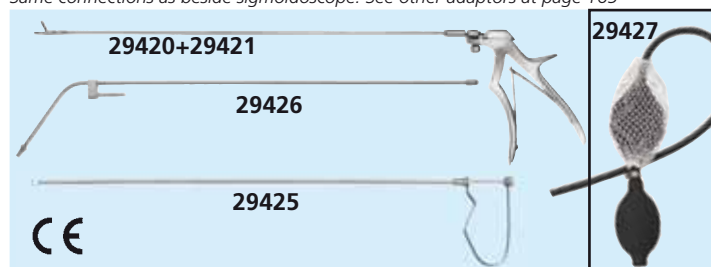


F.O. PROCTOSCOPE



GIMA code	F.O. ANOSCOPES - PROCTOSCOPES	ADAPTOR included
29400	F.O. Anoscope Ø15x70 mm - with obturator	Wolf/Acme/Storz
29401	F.O. Anoscope Ø20x70 mm - with obturator	Wolf/Acme/Storz
29402	F.O. Anoscope Ø25x70 mm - with obturator	Wolf/Acme/Storz
29403	Set of 3 F.O. anoscopes with Wolf and Storz connector in a case	
29405	F.O. Proctoscope Ø20x130 mm - with obturator with 2.0X and Wolf, Acme, Storz adaptors	
30840	ENDO STORZ ADAPTOR - to connect with Gima F.O. cable	

Same connections as beside sigmoidoscope. See other adaptors at page 165



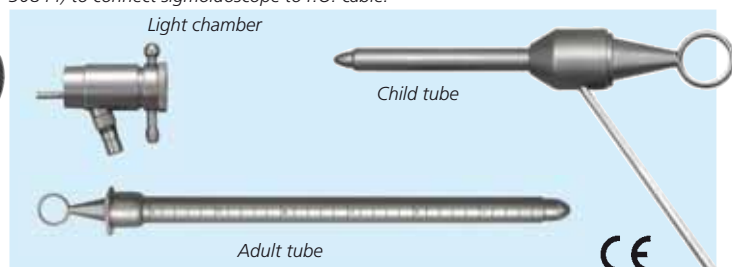
GIMA code	S/S ACCESSORIES FOR F.O. ANOSCOPES, PROCTOSCOPES, SIGMOIDOSCOPES
29420	Handle for Biopsy forceps
29421	Biopsy forceps 3.5x8 mm Cup Jaws - 420 mm
29422	Biopsy forceps 4 mm - Cutting Jaws - 420 mm
29425	Sponge Holding forceps - 400 mm
29426	Suction Tube - 400 mm
29427	Twin Bellow Insufflator

F.O. SIGMOIDOSCOPES



GIMA code	F.O. SIGMOIDOSCOPES WITH 2.0X MAGNIFICATION SWIVEL LENS	ADAPTOR included
29410	F.O. Sigmoidoscope - 12x200 mm	Wolf/Acme/Storz
29411	F.O. Sigmoidoscope - 16x250 mm	Wolf/Acme/Storz
29412	F.O. Sigmoidoscope - 21x200 mm	Wolf/Acme/Storz
29413	F.O. Sigmoidoscope - 21x250 mm	Wolf/Acme/Storz
29414	F.O. Sigmoidoscope - 21x300 mm	Wolf/Acme/Storz
30840	ENDO STORZ ADAPTOR - to connect with Gima F.O. cable	

To connect sigmoidoscope to Gima light source (30801, 30802) you need: F.O. cable (30818-30826), adaptor (30830) to connect cable to light source, 2 adaptors (30840, 30844) to connect sigmoidoscope to F.O. cable.



• 29418 LLOYD - DAVIES SIGMOIDOSCOPES SET

Sigmoidoscope set is composed by one light chamber, with Acme/Wolf/Storz adaptor, one adult tube Ø 20x300 mm, one boy tube Ø 16x250 mm, and one child tube Ø 10x75 mm, in a soft pouch.

To light set you can use illuminated handle (code 30799) or Gima light source (30801), light source adapter (30830), F.O. cable (30818) and adapter (30840).

PREGNANCY TESTS: MIDSTREAM AND STRIP TYPE

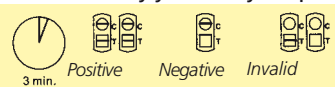


GIMA offers a complete line of pregnancy tests, both for OTC market (self test) and for professional use in hospital or doctor's cabinets.

All products are packed in carton boxes with multilingual user manual (English, Italian, Spanish, French, Greek, Portuguese).

Main features of pregnancy tests:

- Each test is individually packed in sealed pouch
- Very quick, some positive can be detected in 1 minute (std. 3 min)
- Early detection: it can be used since the first day you miss your period
- Reliability: 99%
- Sensibility: 25 mIU/ml
- Clinically tested



GIMA code	PREGNANCY TESTS	Type	Package
29101	SELF TEST	strip 4 mm	box of 4 pcs
29104	SELF TEST	midstream	box of 1 pc
29107	SELF TEST	midstream	box of 2 pcs
29108	PROFESSIONAL TEST	midstream	box of 25 pcs
29100	PROFESSIONAL TEST	strip 4 mm	box of 50 pcs

PERSONALIZED BOX, MANUAL AND APPROVAL CE 0197 FOR SELF TEST minimum 3000 pcs.

OVULATION - FERTILITY TESTS AND MENOPAUSE TEST



MENOPAUSE TEST:

High sensibility test for detecting FSH in urine, clinically tested. Sensitivity: 25 mIU/ml.

OVULATION - FERTILITY TEST:

Easy to use test for professional use or OTC self test market. Early detection test, 99,9% accurate and clinically tested. Sensitivity: 40 mIU/ml.

All products are packed in carton boxes with multilingual user manual (English, Italian, Spanish, French, Greek, Portuguese).

• 29131 DISPLAY - English - empty

• 29130 DISPLAY - Italian - empty

Suitable for all "gynaecology" self tests

GIMA code	OVULATION TESTS	Type	Package
29112	SELF TEST	midstream	box of 5 pcs
29114	SELF TEST	strip 4 mm	box of 6 pcs
29113	PROFESSIONAL TEST	strip 4 mm	box of 50 pcs
GIMA code	MENOPAUSE TESTS	Type	Package
29109	SELF TEST	midstream	box of 2 pcs

SEE BASAL THERMOMETER FOR FERTILITY CONTROL - PAGE 65

CHLAMYDIA RAPID TEST

• 29117 CHLAMYDIA TEST - box of 20 tests

Provide accurate results in 10 minutes, giving doctors immediate diagnosis. High sensitivity and specificity. Each box includes 20 tests, reagents, female cervical swabs, tubes, droppers, pipette and user manual.

For professional use.

Male/Female swab specimen

- Add reagent A and B to specimen
- Add 3 drops of extracted specimen
- Read results after 10 minutes

Male urine specimen

- Add reagent B and A to specimen
- Add 3 drops of extracted specimen
- Read results after 10 minutes



CE 0197

SYPHILIS RAPID TEST

• 29118 SYPHILIS TEST - box of 40 tests

Fast and easy to use: whole blood test protocol, results in just 10 minutes suitable for use in physician's office.

Accurate: 99.7% sensitivity & 99.6% specificity, recombinant antigens, detects IgG and IgM antibodies, treponemal antigens.

Convenient: 2 step procedure and visual interpretation.

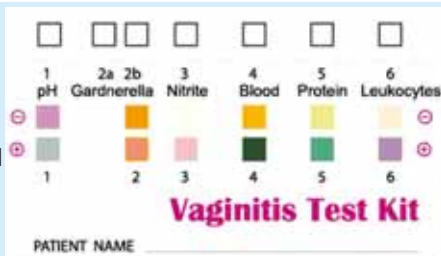
For professional use.



CE

VAGINITIS TEST KIT

The test includes:
1 test + vaginal swab
+ fluid specimen
(buffer solution)
in single box +
English/Italian manual



CE

• 29111 VAGINITIS TEST KIT

A unique, easy-to-use and revolutionary test for gynecologists and operators. Finds the causes of the inflammation/vaginal infection in just 10 minutes. It replaces traditional bacterial tests that take days and costs only a tenth. When necessary dilute vaginal fluid specimen in a buffer solution and then transfer to reagent pad. The instruction manual contains a result guide and can be used to recognize: Trichomoniasis, negative gram bacteria, Gardnerella, Chlamydia, serious bacterial vaginitis. For professional use.

CANDIDA ALBICANS TEST

• 29105 CANDIDA TEST - box of 20 tests

Rapid, immunochromatographic test on vaginal smear. Easy to perform, able to identify by specific antibodies the presence of Candida in only 10 to 20 minutes. Validated by external studies, found to have a sensitivity of over 98% and specificity of over 94% when compared with reference methods for microbes identification (such as BD Affirm, USA). The reproducibility is at the highest level of rapid tests. As Candida affects 50% of women at least once in their life and symptoms can be mistaken for those of Bacterial Vaginosis or other Vaginitis, the use of this test together with the vaginal pH test (see code 29110) allows discriminate between the two. For professional use.

• 29106 CANDIDA SELF TEST - box of 1 test

Same as 29105 but in single box for self testing.



CE

STREP-B TEST

• 29123 STREP-B TEST - box of 20 tests

Screening test for use in the detection of streptococcus B in vaginal fluid specimens. Group B streptococci (GBS) or streptococcus agalactiae are among the most frequent causes of life-threatening infectious in neonates. As standard methods require 24 to 48 hours incubation, reliable rapid tests are an utmost convenient alternative for diagnosis for the POC use. An absolute specificity and a sensitivity of 1.0×10^5 micro-organisms characterize this special test. For professional use.



CE

VAGINAL PH TEST

The kit contains:
10 cotton swabs +
10 reagent strips in
an individual box
with user manual
(English + Italian)

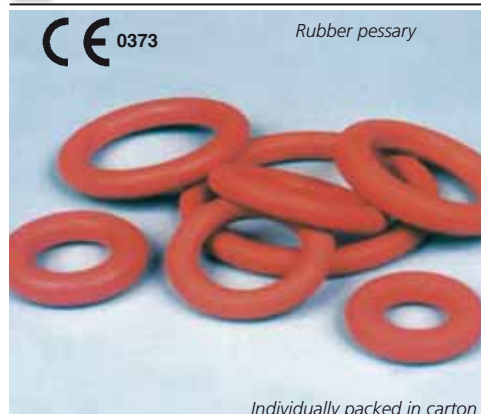


CE

• 29110 VAGINAL PH TEST - box of 10 pcs.

Quick test to determine vaginal PH. An easy routine test to check vaginal PH in just 1 minute to make sure it is within the physiological limits (< 4.7). An increase in the PH level may indicate a change in the vaginal environment. This could mean there is a possible vaginitis. The test is ideal for pregnant women and for women with particular diseases such as diabetes. For professional use.

RUBBER AND SILICONE PESSARY FOR UTERINE PROLAPSE - LATEX FREE



CE 0373

Rubber pessary



Silicone pessary

Individually packed in carton box with English user manual

GIMA code	RUBBER PESSARY - autoclavable
29882	Rubber Pessary Ø 55 mm
29963	Rubber Pessary Ø 60 mm
29964	Rubber Pessary Ø 65 mm
29965	Rubber Pessary Ø 70 mm
29966	Rubber Pessary Ø 75 mm
29967	Rubber Pessary Ø 80 mm
29968	Rubber Pessary Ø 85 mm
29969	Rubber Pessary Ø 90 mm
29884	Rubber Pessary Ø 95 mm
GIMA code	SILICONE PESSARY - autoclavable
29893	Silicone Pessary Ø 60 mm
29894	Silicone Pessary Ø 65 mm
29895	Silicone Pessary Ø 70 mm
29896	Silicone Pessary Ø 75 mm
29897	Silicone Pessary Ø 80 mm

"KARMAN" AND "BERKELEY" INTRAUTERINE SUCTION CURETTES



Length 24 cm with connector, 20,5 cm without

GIMA code	"KARMAN" STYLE CURETTES FLEXIBLE - SINGLE USE - STERILE	Minimum order
29860	Karman Curette N° 6 - 6 mm x 24 cm	box of 20
29861	Karman Curette N° 7 - 7 mm x 24 cm	box of 20
29862	Karman Curette N° 8 - 8 mm x 24 cm	box of 20
29863	Karman Curette N° 9 - 9 mm x 24 cm	box of 20
29864	Karman Curette N° 10 - 10 mm x 24 cm	box of 20
29865	Karman Curette N° 11 - 11 mm x 24 cm	box of 20
29866	Karman Curette N° 12 - 12 mm x 24 cm	box of 20



Length 20 cm with connector, 17 cm without

GIMA code	"BERKELEY" STYLE CURETTES CURVED - RIGID - SINGLE USE - STERILE	Minimum order
29870	Berkeley Curette N° 7 - Ø 7 mm x 20 cm	box of 20
29871	Berkeley Curette N° 8 - Ø 8 mm x 20 cm	box of 20
29872	Berkeley Curette N° 9 - Ø 9 mm x 20 cm	box of 20
29873	Berkeley Curette N° 10 - Ø 10 mm x 20 cm	box of 20
29874	Berkeley Curette N° 11 - Ø 11 mm x 20 cm	box of 20
29875	Berkeley Curette N° 12 - Ø 12 mm x 20 cm	box of 20

• 29918 SUCTION SYRINGE - one-way self-blocking

Special syringe with adaptor suitable for use with Karman and Berkeley curettes of any brand.

One-way self-blocking valve for safety and easier use.

Single use and sterile, 60 ml capacity.

minimum order: 10 pcs.



AMNIOSCOPE: TUBES AND SET



• 29970 AMNIOSCOPE SET includes 29971/2/3/5 and 30840 Set of three amnioscopes tubes with shutter 200 mm length, 12, 16 and 20 mm diameter, and a clamp for fibre optic light. All tubes are graduated in centimetres, have a rounded end and are sterilizable with any method.

To light amnioscope set you can use GIMA 150 light source (code 30801), adapter (code 30830), F.O. cable (code 30818). Single tube need in addition adapter for clamp (code 30840) and clamp (29975).

• 29971 AMNIOSCOPE TUBE 12x24x200 mm

• 29972 AMNIOSCOPE TUBE 16x24x200 mm

• 29973 AMNIOSCOPE TUBE 20x24x200 mm

• 29975 ANGLED CLAMP FOR LIGHT CONNECTION

OBSTETRIC STETHOSCOPES

• 32501 SHORT OBSTETRIC STETHOSCOPE - beech-wood

• 32502 LONG OBSTETRIC STETHOSCOPE - beech-wood

These stethoscopes are hand-craft manufactured, made in beech-wood accurately selected and seasoned for at least 3 years. They have a perfect finish with a special transparent varnish. Packed in single box. Made in Germany.

• 32505 PINARD STETHOSCOPE - aluminium



SCHULTZE SALPINGOGRAPH



• 29780 SALPINGOGRAPH

Instrument for hystero-salpingography and tubal insufflation, Prof. Gunter K. F. Schultze from Berlin type. Made in Germany.

• 29784 HYSTERO SYRINGE - 10 cc - LUER LOCK - spare

HYSTEOSALPINGOGRAPH: STANDARD ACCESSORIES

Watch for hystero
Rack-bar

Hystero syringe 10 cc Luer Lock
3 interchangeable cones (small-medium-large)

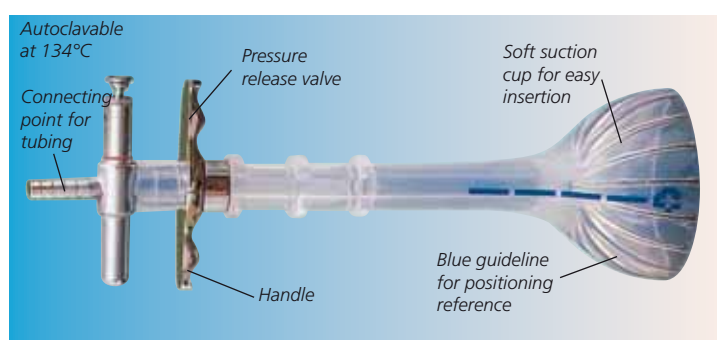
SUCTION CUPS

• 29980 SILICONE SUCTION CUP - Ø 60x210 mm

• 29981 SILICONE SUCTION CUP - Ø 70x210 mm

Made in medical grade silicone

CE 0434



LATEX PROBE COVERS



- **29513 LATEX PROBE COVERS - transparent - box of 50**
 - **29514 LATEX PROBE COVERS - transparent - box of 500**
- Probes for ecography and doppler. Length 17 cm, Ø 3.3 cm
Individually packed in single plastic bag.

AMNIOCENTESIS NEEDLES

For transabdominal sampling of amniotic fluid for prenatal diagnosis of genetic disorders of the foetus. It is also used for cytogenetic and biochemical studies. Accurate sharpening of the needle allows an easy and atraumatic insertion. Its mandrel is provided with an ultrasound detectable tip allowing an echo-guided insertion, and it is colour coded for an easy identification of the needle size. The needle is provided with an adjustable stopper to determine insertion depth, and with a female luer lock connector to collect the amniotic fluid through a syringe. Made in Italy.

GIMA code	AMNIOCENTESIS NEEDLES - STERILE	CE 0476
29630	Needle 20 G x 100 mm	
29631	Needle 20 G x 120 mm	
29632	Needle 20 G x 150 mm	
29633	Needle 20 G x 180 mm	
29634	Needle 21 G x 120 mm	

UMBILICAL CLAMP



- **29942 X-SAFE UMBILICAL CORD CLAMP - sterile**
Disposable large size umbilical cord clamp to allow a proper clamping of all umbilical cords and prevent their outcoming from the closing comb.
Individually packed in coupled cellophane (nylon/poliethilene) and medical paper to ensure safe hygienic conditions to user. Sterilized by ethylene oxide.
Made in Italy.

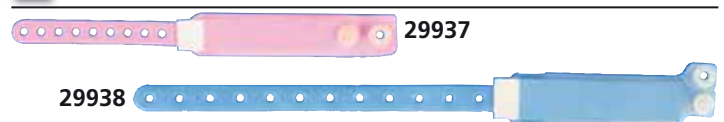
Minimum order: box of 500 pcs.

MEMBRANE PERFORATOR



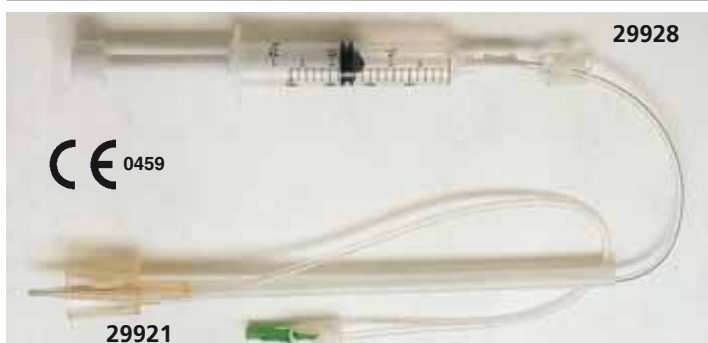
- **29945 AMNIOTIC MEMBRANE PERFORATOR-sterile**
Disposable amniotic perforator. This system is thought to be completely safe to avoid lesions to the foetus.
Supplied in single sterile envelope.

I.D. BRACELET



GIMA code	I.D. BRACELET	Colour	Minimum order
29936	Newborn	light blue	box of 100 pcs.
29937	Newborn	pink	box of 100 pcs.
29938	Mother	light blue	box of 100 pcs.
29939	Mother	pink	box of 100 pcs.

CUPS FOR HYSTEROGRAPHY AND SIFT SCREW SYRINGE



GIMA code	CUPS FOR HYSTEROGRAPHY DISPOSABLE - STERILE	Minimum order
29920	Cups 25 mm	10 pcs.
29921	Cups 30 mm	10 pcs.
29922	Cups 35 mm	10 pcs.
29923	Cups connector - sterile	10 pcs.
29928	SIFT syringe for cups	10 pcs.

CUPS FOR HYSTEROGRAPHY - Latex free

The device consists of a rigid, transparent tapered cup with a central conical cannula; it is equipped with a 25 cm long flexible, pliable manipulator joined to the cup and two tubes equipped with clamps. One of these provides the vacuum, while the other injects the radiopaque medium. Perfect adhesion to the cervix by self-centering is ensured by the tapered shape of the cup and the progressive application of a vacuum to the cup. The suction cup/cannula unit is radiotransparent and allows the proximal area of the endocervix to be controlled. The radiologist is able to manipulate at a distance from the radioactive field while at the same time comfortably immobilizing the uterus.

SIFT SCREWTHREAD SYRINGE

Contrast medium is injected by turning the position of the syringe which is equipped with a thread, to enable easy and regular injection of the contrast medium. If cup is used on our sift syringe, connector is not needed.

AYRE SPATULA - BIRCH WOOD




Image showing two Ayre Spatulas (A and B) and their packaging. The packaging is labeled "Spatula di ayre sterile in legno".

GIMA code	AYRE SPATULA - WOOD	Length	Minimum order
29743	Ayre Spatula A 5 box of 100 pcs = of 500 pcs	18 cm	500 pcs.
29745	Sterile Ayre Spatula A Individually packed in sterile pouch, in box of 100	18 cm	100 pcs.

AYRE SPATULA - PLASTIC




Image showing three Ayre Spatulas (A, B, and C) and their packaging. The packaging is labeled "Used for ecto-cervical and posterior fornix cells sampler in uterus neck cancer screening procedures."

GIMA code	AYRE SPATULA - PLASTIC	Material	Length	Minimum order
29746	Ayre Spatula Packed in plastic bags of 25 pcs., in carton of 400 pcs.	PP	22 cm	400 pcs.
29748	Sterile Ayre Spatula A Individually packed in sterile pouch, in box of 100	PP	18.8 cm	100 pcs.
29749	Sterile Ayre Spatula B Individually packed in sterile pouch, in box of 100	PP	18.8 cm	100 pcs.

GIMA BRUSH - MADE IN ITALY



Image showing a GIMA Brush (A) and its packaging. The packaging is labeled "Sterile pack" and "brush Ø=6 mm".

GIMA code	AYRE SPATULA - WOOD	Length	Minimum order
29739-29740		20 cm	

- 29739 GIMA BRUSH - conical - bag of 25 pcs.
 - 29740 GIMA BRUSH - conical - box of 400 pcs.
- These single-use endocervical brushes are an efficient method of collecting vulval, endocervical and nasal surface samples for cytological/microbiological examinations. Non sterile. Packed in plastic bags of 25 units, in carton of 400 units.
- 29742 GIMA BRUSH - conical - STERILE - box of 500 pcs
- As code 29740, individually packed in sterile plastic bag. Both codes are made in Italy.

GIMA BRUSH - STERILE

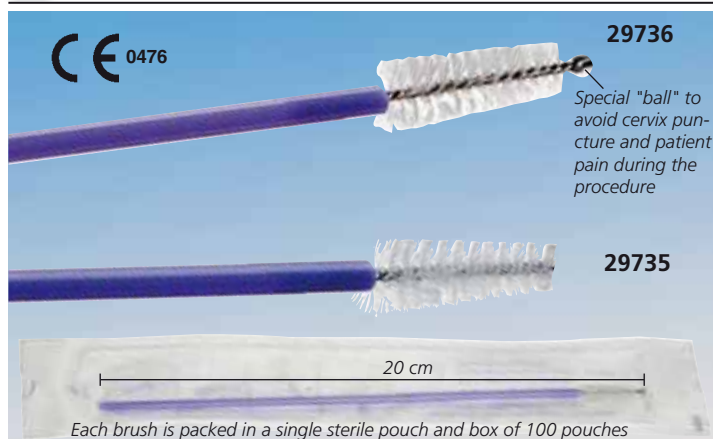
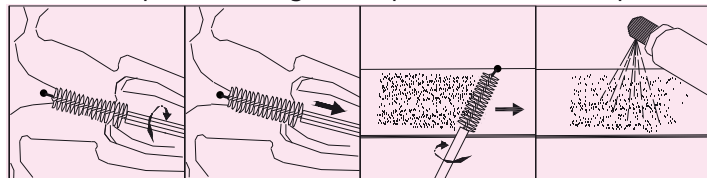


Image showing two GIMA Brushes (A and B) and their packaging. The packaging is labeled "Special 'ball' to avoid cervix puncture and patient pain during the procedure".

GIMA code	AYRE SPATULA - PLASTIC	Material	Length	Minimum order
29735			20 cm	

- 29735 GIMA BRUSH B - sterile - box of 100 pcs.
 - 29736 GIMA BRUSH BALL - sterile - box of 100 pcs.
- Each brush is packed in a single sterile pouch and box of 100 pouches.



COTTON SWABS



Image showing four types of Cotton Swabs (A, B, C, and D) and their packaging. The packaging is labeled "STERILE SWAB STICK".

GIMA code	COTTON SWABS	Shaft Material	Cotton Ø	Shaft length	Minimum order
29750	Cotton Swab	Plastic	1 cm	20 cm	400 pcs.
29753	Sterile Cotton Swab	Plastic	0.5 cm	15 cm	100 pcs.
29754	Cotton Swab	Wood	0.5 cm	15 cm	1,000 pcs.
29756	Cotton Swab	Wood	1 cm	15 cm	500 pcs.

WALLACH PAPETTE, GIMA COLLECTOR



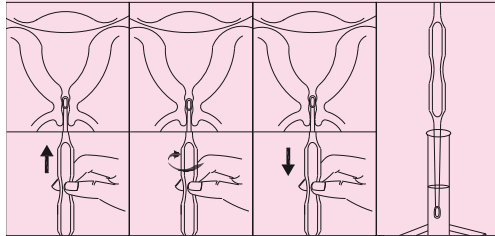
Image showing the Wallach Papette and GIMA Collector. The packaging is labeled "WALLACH".

GIMA code	PAPETTES	Material	Shaft length	Minimum order
29738	Wallach papette	Plastic	16 cm	100 pcs.
29737	Sterile GIMA collector	Plastic	17 cm	100 pcs.

CERVIX BRUSH PLUSH - CERVICAL SPOON

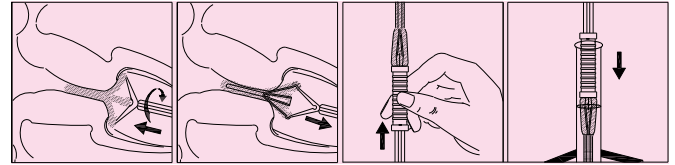


• 29758 CERVICAL SPOON - sterile - box of 100 pcs.

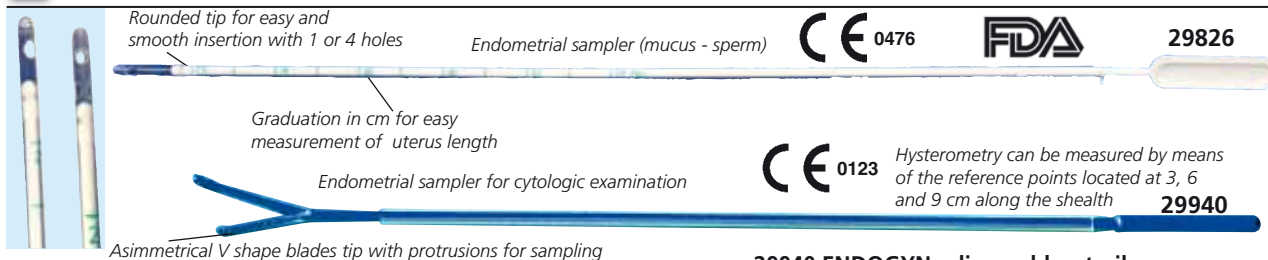


CE 0476

• 29759 CERVICAL BRUSH PLUSH - sterile - box of 100 pcs.
With sleeve and retractile at rhombic part



CANNULAS FOR ENDOMETRIAL SAMPLING



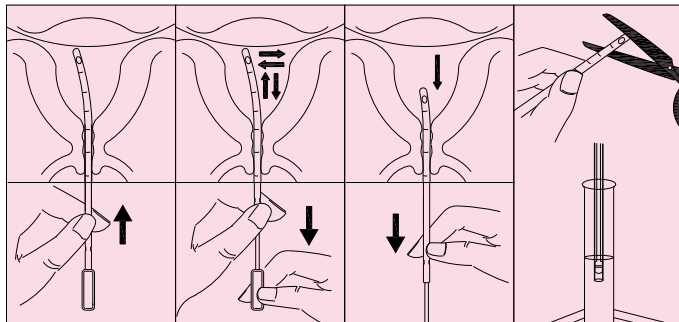
• 29826 PIPELLA 1 hole - disposable, sterile

• 29827 PIPELLA 4 holes - disposable, sterile

For endometrial cytologic sampling and sperm sampling in post-coital tests.

It allows a painless and easy routine screening of the endometrium avoiding dilation and traction of the uterus neck. External Ø 2 ± 0.5 mm - length 27.5 cm
Single use, sterile.

minimum order: 100 pcs.



• 29940 ENDOGYN - disposable, sterile

For cytologic endometrial sampling. It allows a painless and easy routine screening of the endometrium avoiding dilation and traction of the uterus neck. An outer sheath covers a mandrel with asymmetrical "V" shaped blades on the top. External Ø 3.0 mm - Length 20 cm. Each arm features fine toothings and thin cutting edges which are able to remove and keep more endometrial tissue. The head of one of the two arms features a hemispherical head which, when it goes back inside the sheath, allows for previously removed tissue to be aspirated

minimum order: 25 pcs.

HYSTEROMETER

HYSTEROMETER with slider - single use - sterile
Calibrated reading on the handle, flexible

CE 0459

29930-32		
GIMA code	HYSTEROMETER SINGLE USE - STERILE - LATEX FREE	Minimum order
29930	Hysterometer CH 10	25 pcs.
29931	Hysterometer CH 12	25 pcs.
29932	Hysterometer CH 14	25 pcs.

SPRAY FOR CITOTOLOGY FIXATION AND SLIDES



29775

29777

29775

29774

MICROSCOPE SLIDES	
GIMA code	Size 76x26 mm, 1.0-1.2 thick 45° corners minimum order: pack of 200 pcs. (4 boxes of 50 pcs.)
29774	Plain side, ground edges
29775	Single end frosted, sandblasted band, ground edges
29777	Twin frosted in both ends, ground edges, sandblasted band



29776

• 29776 BOX FOR SLIDES
Plastic, transparent box for storage of up to three slides.

• 29778 GIMAFIX SPRAY FOR CITOTOLOGY FIXATION
Fixer for cytology. Composition: isopropanole, polyethylenglycole. It does not contain propellants deleterious for the ozone. 250 cc bottle.

minimum order: 12 bottles



29778

DISPOSABLE STERILE VAGINAL SPECULUM



SIDE SCREW SPECULUM - with gradual adjustment - sterile
Disposable sterile speculum with gradual screw-action adjustment. Available in 3 sizes. Made in China.

GIMA code	SIDE SCREW VAGINAL SPECULUM - STERILE	Minimum order
29983	SIDE SCREW speculum - small Ø 20 mm	box of 100
29984	SIDE SCREW speculum - medium Ø 28 mm	box of 100
29985	SIDE SCREW speculum - large Ø 33 mm	box of 100
29986	SIDE SCREW speculum - mixed* sizes	box of 100

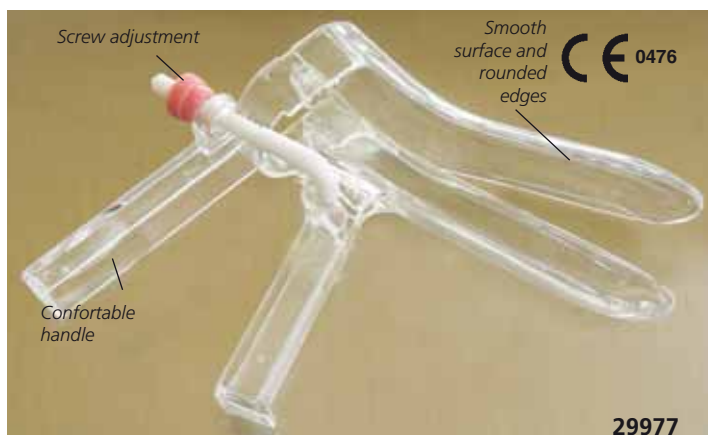
*mixed box includes 20 small, 70 medium, 10 large vaginal speculum



CENTRAL PIN, MIDDLE SCREW, TACHE SPECULUM

Three different models of disposable sterile speculum. Sold in mixed box containing 3 sizes: small, medium, large. Made in China.

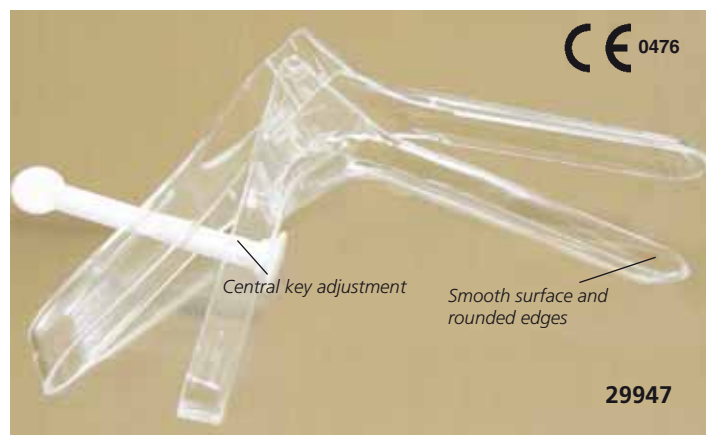
GIMA code	CENTRAL PIN / MIDDLE SCREW / TACHE STERILE	Minimum order
29991	CENTRAL PIN Speculum - mixed* sizes	box of 100
29995	MIDDLE SCREW Speculum - mixed* sizes	box of 100
29987	TACHE Speculum - mixed* sizes	box of 100



CUSCO SPECULUM - with gradual adjustment - sterile

Disposable speculum with gradual screw-action adjustment. It is manufactured with the best non-toxic transparent material, comes in a single transparent vacuum pack and is sterilized with ethylene oxide. Sterilization is guaranteed by the special quality control label on each pack. Available 3 sizes distinguishable through screw color. Made in Europe.

GIMA code	CUSCO VAGINAL SPECULUM - STERILE	Minimum order
29976	CUSCO Speculum - small 85 x 20 mm	box of 120
29977	CUSCO Speculum - medium 90 x 28 mm	box of 120
29978	CUSCO Speculum - large 100 x 36 mm	box of 108



PERNO SPECULUM - with central key adjustment

For dilation of the vaginal canal to expose the uterus neck. It allows the adjustment of the vaginal opening by positioning the blades and locking the central key. The smooth surface and rounded edges aid a comfortable introduction. The central key can be bent down for an easier introduction of cumbersome instruments 3 sizes distinguishable through key colour. Made in Europe.

GIMA code	PERNO VAGINAL SPECULUM - STERILE	Minimum order
29946	PERNO Speculum - small Ø 20 mm	box of 120
29947	PERNO Speculum - medium Ø 26 mm	box of 120
29948	PERNO Speculum - large Ø 30 mm	box of 120

STAINLESS STEEL VAGINAL SPECULUM - CUSCO AND COLLIN

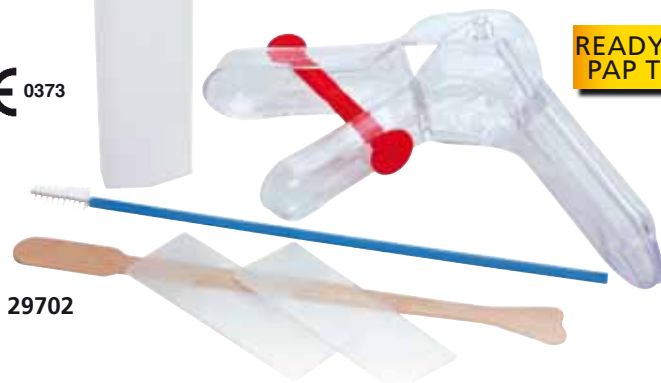


GIMA code	STAINLESS STEEL SPECULUM
29770	Cusco stainless steel speculum - small 100 x 30 mm
29771	Cusco stainless steel speculum - medium 110 x 34 mm
29772	Cusco stainless steel speculum - large 125 x 36 mm
29773	Cusco stainless steel speculum - virgin 110 x 17 mm
29763	HF Cusco stainless steel speculum - medium with insulation for HF applications
29768	Collin stainless steel speculum - medium

All speculum are individually packed in carton box

STERILE PAP TEST KITS

CE 0373



29702

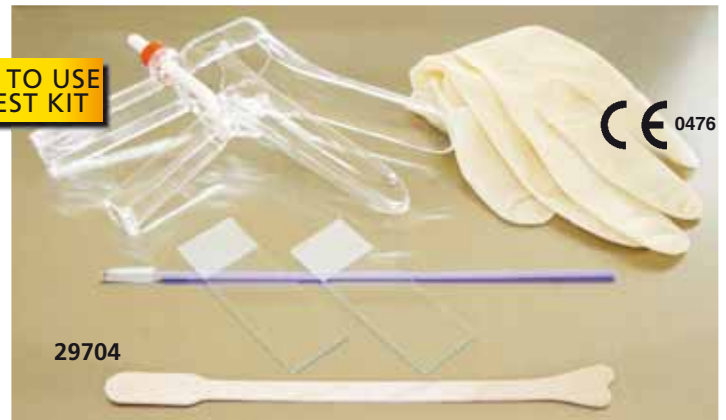
READY TO USE
PAP TEST KIT

• 29702 PAP TEST KIT - sterile - box of 100 pcs.

Pap-Test is a painless examination to detect the presence of any anomalous cells on the cervix. It allows an early diagnosis of uterus neck cancer. The functional configuration of the kit allows a ready to go operation.

The kit includes: two latex gloves, one perno speculum (medium size), one brush, one Ayre spatula (wooden), two slides and one box for them.

Individually packed in sterile pouch.



29704

CE 0476

• 29704 PAP TEST KIT - sterile - box of 50 pcs

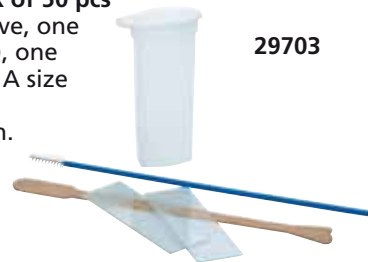
The kit includes: one pair latex glove, one side-screw speculum (medium size), one GIMA brush ball, one Ayre spatula A size (wooden), two slides.

Individually packed in sterile pouch.

• 29703 PAP TEST KIT - sterile - box of 100 pcs

Same as 29702 but without speculum

29703



LUBRIGIMA: LUBRICANT GEL

• 29960 LUBRIGIMA - 250 ml

For an easy insertion of instruments during gyn. examinations.

Its special composition and high transparency does not alter the visual image when optical instruments are used. It does not contain spermicides, it does not grease or stain.

It has an acid Ph and a good electrical conductivity.

It is soluble in water.

The gel is well absorbed by the skin and does not cause irritations to the mucosa. LATEX FREE.

minimum order: 6 pieces



29960

LUBRICATING GEL

• 29957 LUBRICATING GEL

sachet 5 g - box of 100

• 29959 LUBRICATING GEL

tube 82 g - 1 tube

Hypoallergenic lubricating gel, does not irritate skin, dissolves in water and is easily cleaned.

29957



29959



GYNOLIGHT

29962



Supplied in a soft bag with two 1.5 V battery

• 29962 GYNOLIGHT

It allows illumination of the vaginal canal. It fits both central key and side-screw specula.

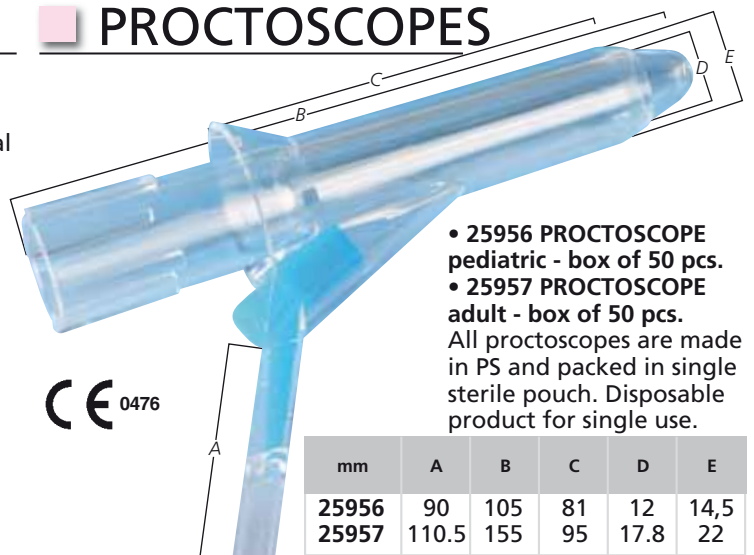
It is provided with two points light source for a proper illumination of the vaginal canal, and its upper point light source can be adjusted by the operator.

It's easy to set and remove thanks to spring side-holders. Gynolight does not come into contact with mucosa.

Cold sterilization.

PROCTOSCOPES

CE 0476



• 25956 PROCTOSCOPE pediatric - box of 50 pcs.

• 25957 PROCTOSCOPE adult - box of 50 pcs.

All proctoscopes are made in PS and packed in single sterile pouch. Disposable product for single use.

mm	A	B	C	D	E
25956	90	105	81	12	14,5
25957	110.5	155	95	17.8	22