
Nokia Asha 205 Dual SIM User Guide

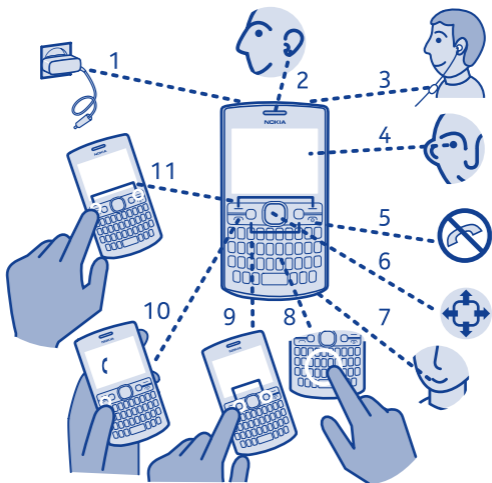
Contents

Keys and parts.....	5
Insert a SIM card and battery.....	7
Insert a second SIM card.....	8
Insert a memory card.....	9
Charge the battery.....	10
Lock the keys	11
Copy content from your old phone.....	11
Explore your phone.....	13
Shortcut keys.....	14
Indicators on your phone.....	14
Set which SIM card to use.....	16
Make or answer a call.....	17
Call the last dialed number.....	18
View your missed calls.....	18
Change the volume.....	19
Save a name and phone number.....	19
Make calls quickly.....	21
Check your voicemail.....	22

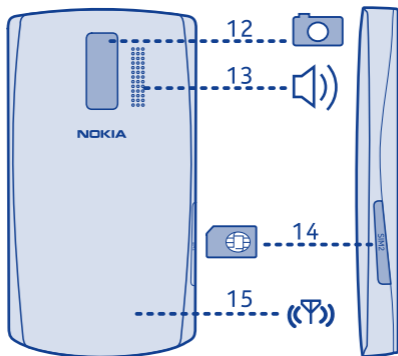
Keys on the keyboard	23
Write text.....	23
Copy, cut or paste text.....	24
Use predictive text.....	25
Send a message.....	26
Personalise your home screen.....	27
Add shortcuts to your home screen.....	28
Change your ringtone.....	29
Set an alarm.....	30
Add an appointment.....	31
Listen to the radio.....	32
Play a song.....	33
Take a photo.....	34
Share your content using Nokia Slam.....	35
Send a photo using Bluetooth.....	36
Record a video.....	37
Browse the web.....	38
Add a bookmark.....	39

Set up your mail account.....	40
Send a mail.....	40
Set up chat in your phone.....	42
Chat with your friends.....	43
Restore original settings.....	44
Update phone software using your phone.....	45
Back up content to a memory card.....	46
Access codes.....	47
Troubleshooting.....	49
General information.....	50

Keys and parts



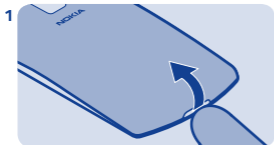
- | | | | |
|---|----------------------------|----|------------------------------|
| 1 | Charger connector | 7 | Microphone |
| 2 | Earpiece | 8 | Keyboard |
| 3 | Headset connector (3.5 mm) | 9 | Left and right shortcut keys |
| 4 | Screen | 10 | Call key |
| 5 | End/Power key | 11 | Selection keys |
| 6 | Scroll key | | |



- 12 Camera lens. Before using the camera, remove the protective tape from the lens.
- 13 Loudspeaker
- 14 SIM card slot (SIM 2)
- 15 Antenna area. See ➡ 1 in "Feature-specific instructions".

Your phone uses S40 software.

Insert a SIM card and battery



Switch the phone off, and remove the back cover.



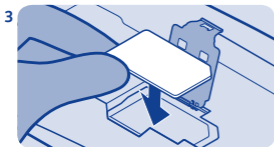
Line up the battery contacts, and push the battery in.




If the battery is in the phone, lift it out.




Press the back cover down until it locks into place.

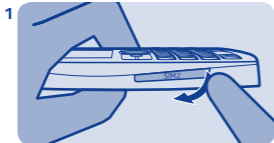


Lift the SIM card holder, and place the SIM in the holder with the contact area face down. See  3.

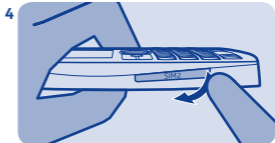


To switch on, press and hold  until the phone vibrates.

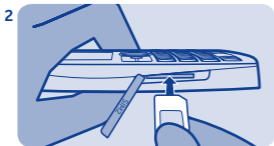
Insert a second SIM card



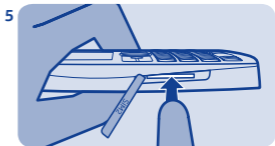
Open the SIM2 SIM cover. See → 4.



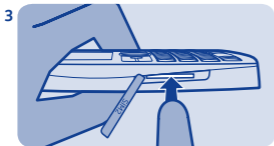
To remove the card, open the SIM2 SIM cover.



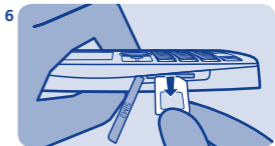
Put the SIM in with the contact area face up.



Push the SIM in until it's free.

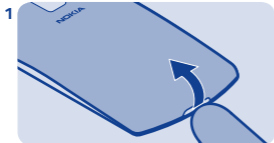


Push the card in until it locks into place. Close the cover.

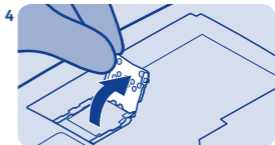


Pull the SIM out.

Insert a memory card



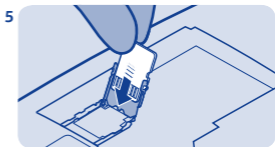
Switch the phone off, and remove the back cover.



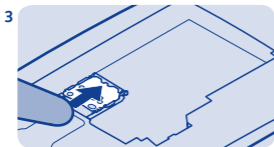
Lift the holder.



If the battery is in the phone, lift it out.



Put a compatible memory card in with the contact area face down.

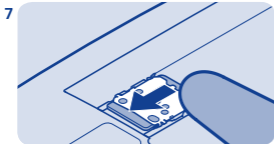


Slide the memory card holder towards the bottom of the phone.

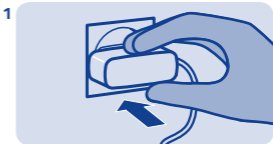


Lower the holder.

Charge the battery



Slide the holder to its original position.



Plug the charger into a wall outlet.



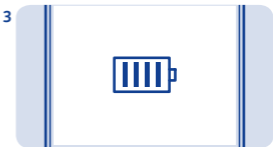
Line up the battery contacts, and push the battery in.



Connect the charger to the phone. See [▶ 5](#).



Replace the back cover. See [▶ 2](#).



Battery full? Unplug from the phone, then from the wall outlet.

Lock the keys



Lock the keys when not using your phone.

Copy content from your old phone



Easily get your contacts, calendar, and other stuff to your new phone.



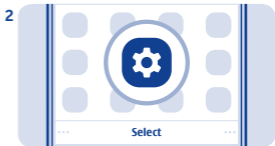
Select **Menu**, and press the function key.



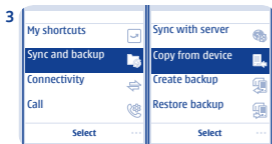
Switch Bluetooth on in both phones.



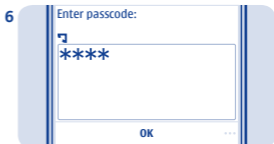
To unlock, select **Unlock**, and press the function key.



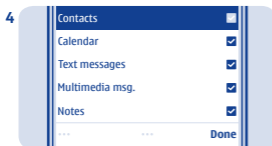
Select **Menu** > **Settings**.



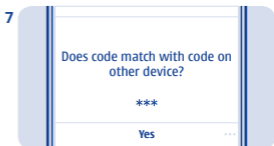
Select **Sync and backup** > **Copy from device**.



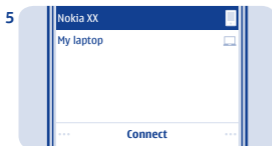
If asked, create a one-time passcode (such as 123), and select **OK**.



Select what you want to copy, and select **Done**.



Check that the codes match on both phones.



Select your old phone from the list of found devices.



Follow the instructions shown on both phones.

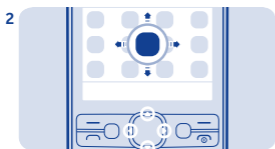
Explore your phone



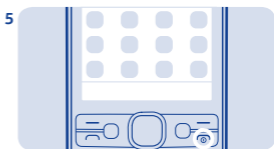
To see the features and apps in your phone, press **Menu**.



To go back to the previous view, press **Back**.



To go to an app or feature, press the scroll key up, down, left, or right.



To go back to the home screen, press **Home**.



To open the app or select the feature, press **Select**.


Shortcut keys





Use the left shortcut key to open a social app or web browser and the right shortcut key to open messaging quickly. The available options may vary.


When you press the right shortcut key for the first time, select what it opens. To later set what the key opens, select **Menu > Settings and My shortcuts**.

Indicators on your phone


 — You have unread messages sent to SIM1 or SIM2.

 — You have unread messages sent to SIM1 and SIM2.

 /  — You have unsent, cancelled, or failed messages from SIM1 or SIM2.

 — You have unsent, cancelled, or failed messages from SIM1 and SIM2.

 — The keys are locked.

 — The phone doesn't ring when somebody calls or sends a message.



 — An alarm is set.


G **E**
 — The phone is connected to a GPRS or EGPRS network using SIM1.

G **E**
 — A GPRS or EGPRS connection from SIM1 is open.

 — The GPRS or EGPRS connection from SIM1 is on hold.

— Bluetooth is on.

 / — All incoming calls to SIM1 or SIM2 are forwarded to another number.

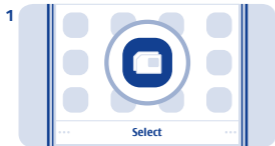
— All incoming calls to SIM1 and SIM2 are forwarded to another number.

— A headset is connected to the phone.

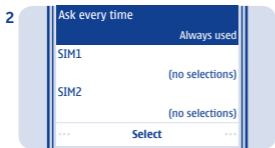
Set which SIM card to use



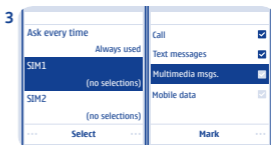
Set the SIM for outgoing calls, messages, and connections.



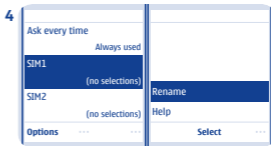
Select **Menu** > **SIM manager**.



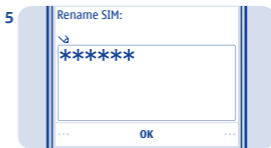
To decide every time which SIM to use, select **Ask every time**.



Select **SIM1** or **SIM2** to set which SIM to use for which connection.



To rename a SIM, select the card, and select **Options** > **Rename**.



Write a name, and select **OK**.

Make or answer a call



Call your friend. See ➔ 6.



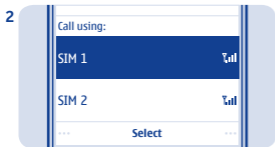
To end the call, press .



1 Type in the phone number, and press .



4 When your phone rings, press  to answer. See ➔ 7.

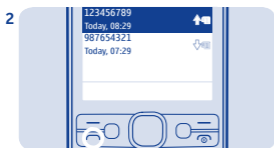


2 If asked, select which SIM to use.

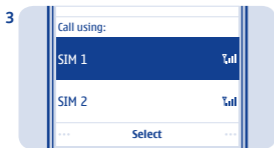
Call the last dialed number



On the home screen, press .

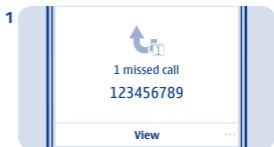


Select the number, and press .

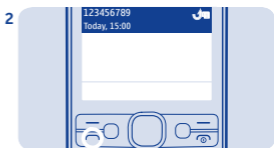



If asked, select which SIM to use.

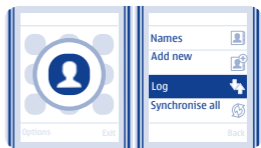
View your missed calls



On the home screen, select **View**. See  8.



To call back, select the number, and press .

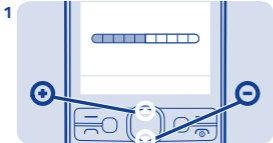


Tip: To view missed calls later, select **Menu > Contacts > Log > Missed calls**.

Change the volume



Is the volume too loud during a call or when listening to the radio?



Scroll up or down.

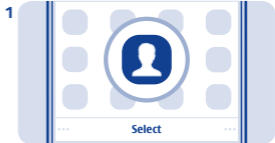


Better.

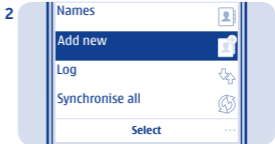
Save a name and phone number



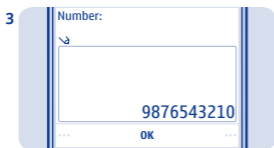
Add new contacts to your phone.



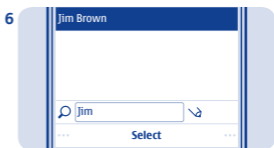
Select **Menu** > **Contacts**.



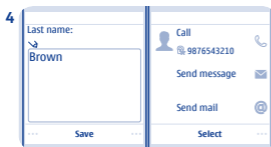
Select **Add new**. If asked, select where to save the contact.



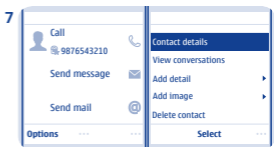
Type in the phone number, then select **OK**.



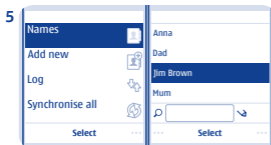
To search for a contact, start writing the contact's name in the search box.



Write the first and last name, then select **Save**.

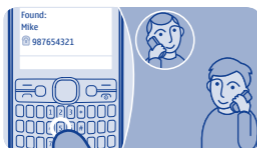


Select **Options** > **Contact details**.

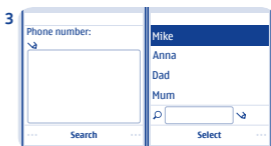


To edit details, select **Names** and a contact.

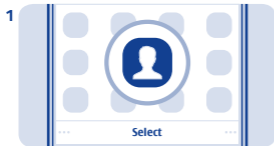
Make calls quickly



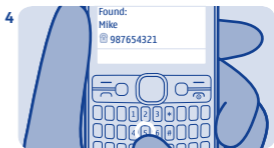
Call someone often? Set their number as a speed dial. See [▶ 9](#).



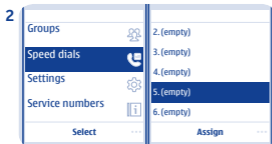
Select **Search** and a contact.



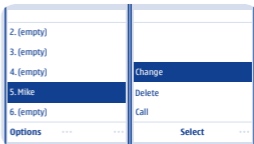
Select **Menu** > **Contacts**.



To call, press and hold a number key on the home screen.



Select **More** > **Speed dials** and a free slot, then select **Assign**.



Tip: To change a speed dial, select **Options** > **Change**.

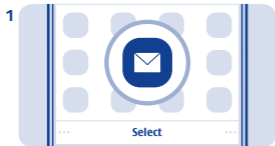
Check your voicemail



When you can't answer, you can forward calls to your voicemail.



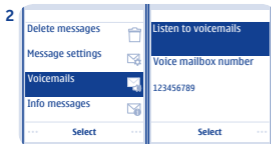
When setting up voicemail, type in your voice mailbox number.



Select **Menu** > **Messaging**.

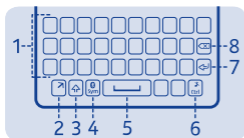


Tip: To quickly call your voicemail, press and hold **1** on the home screen.



Select **More** > **Voicemails** > **Listen to voicemails**.

Keys on the keyboard



- 1 Keyboard
- 2 Function key
- 3 Shift key
- 4 Sym key
- 5 Space key
- 6 Ctrl key
- 7 Enter key
- 8 Backspace key

Write text

With the keyboard you can write your messages in no time.

Set the writing language

Select **Options > Writing language** and the language you want. To change the writing language, you can also press the function key and the ctrl key.

Switch to number mode

Press the function key twice. To go back to letter mode, press the function key.

Switch between character cases

Press the shift key.

Tip: To type in several upper case letters, press the shift key twice.

Type in the number or character printed at the top right corner of a key

Press and hold the key. This feature is not available for all languages.

Delete a character

Press the backspace key .

Copy, cut or paste text

Type in a special character or symbol Want to edit your text more quickly? Copy, cut, and paste to rearrange text easily.

Press the sym key, and select the symbol.

Type in an accented character

While pressing and holding the sym key, press the character key repeatedly.

Move the cursor to the next row or text box

Press the enter key.

Type in a space

Press the space key.

Copy or cut

1. Press and hold the shift key, and scroll to highlight a word, phrase, or section of text. To select all the text, while pressing and holding the ctrl key, press **A**.
2. Press and hold the ctrl key, and press **C** (copy) or **X** (cut).

Paste

Press and hold the ctrl key, and press **V**.

Use predictive text

To speed up your writing, your phone can guess what you are starting to write.

Predictive text is based on a built-in dictionary. This feature is not available for all languages.

Switch predictive text on or off

Select **Options** > **More** > **Prediction settings** > **Prediction** and select **On** or **Off**.

Switch between predictive and traditional text

While pressing and holding the ctrl key, press the space key.

You can also select and hold **Options**.

Use predictive text when writing

1. Start writing a word.
2. Your phone suggests possible words. To confirm a word, press the space key.
3. To see alternative word matches, scroll down.

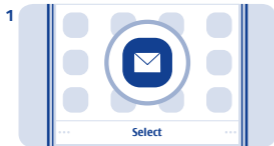
Send a message



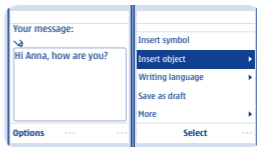
Keep in touch with people through messages. See [11](#).



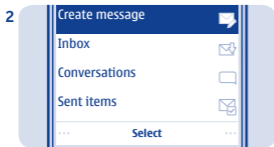
Write your message.



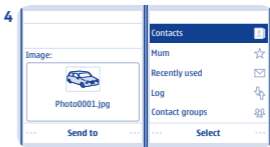
Select **Menu** > **Messaging**.



Tip: To add an attachment, select **Options** > **Insert object**. See [12](#).

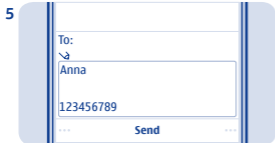


Select **Create message**.

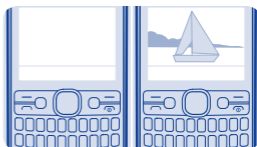


To add a recipient, select **Send to** > **Contacts**.

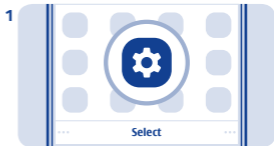
Personalise your home screen



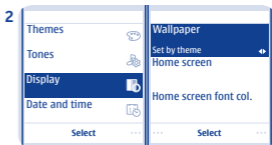
Select **Send**. If asked, select which SIM to use. See ➔ 13, 14.



You can change the wallpaper, and rearrange items on the home screen.



Select **Menu** > **Settings**.

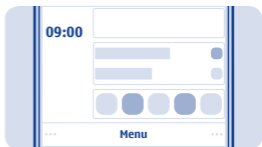


Select **Display**, scroll to **Wallpaper**, then scroll to a folder.

Add shortcuts to your home screen



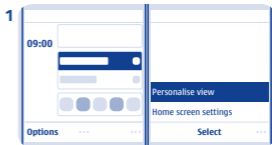
Select **OK** to open the folder, then select a photo.



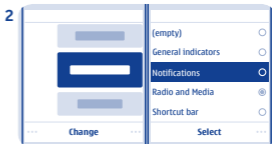
Add shortcuts to your favourite apps to your home screen.



Tip: You can also take a photo on your phone camera, and use that.

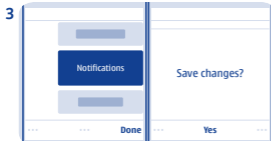


Scroll to a shortcut, then select **Options > Personalise view**.



Select a bar, then select an item, such as a widget.

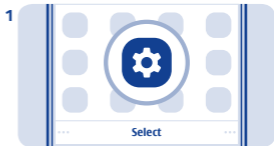
Change your ringtone



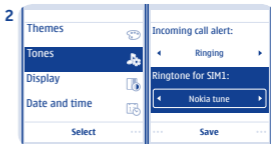
Select **Done** > **Yes**.



Set a different ringtone for each profile and SIM card.

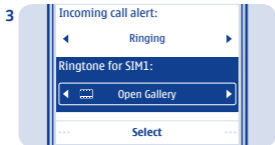


Select **Menu** > **Settings**.



Select **Tones**, and scroll to the ringtone.

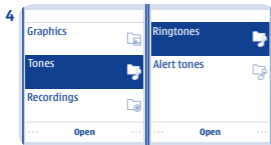
Set an alarm



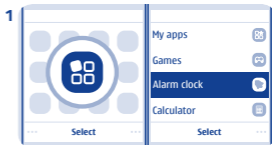
Scroll to **Open Gallery**, and select **Select**.



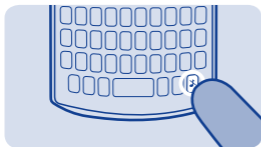
Use your phone as an alarm clock.



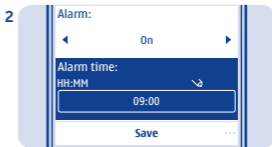
Select **Tones** > **Ringtones** and a ringtone.



Select **Menu** > **Apps** > **Alarm clock**.

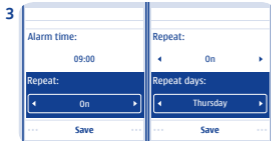


Tip: To switch between the silent and normal profile, press and hold .

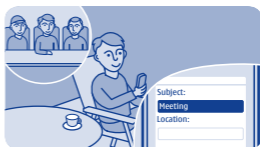


Set the alarm time, and select **Save**.

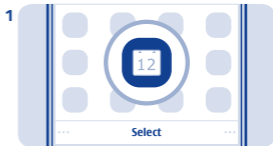
Add an appointment



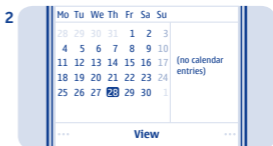
To repeat the alarm, set **Repeat:** to **On**, and select **Repeat days:** and the days and **Done**.



Need to remember an appointment?
Add it to your calendar.

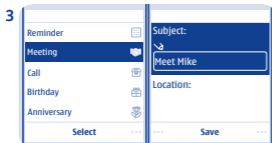


Select **Menu** > **Calendar**.



Select a date and **View** > **Add**.

Listen to the radio



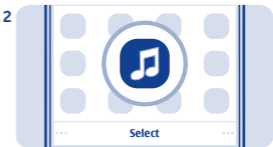
Select **Meeting**, fill in the fields, then select **Save**.



Listen to your favourite radio stations on your phone.

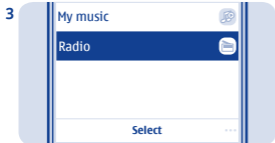


Connect a compatible headset. It acts as an antenna.



Select **Menu** > **Music**.

Play a song



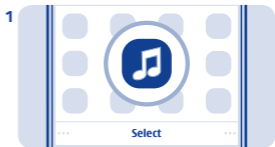
Select **Radio**.



Listen to your favourite music on your phone.



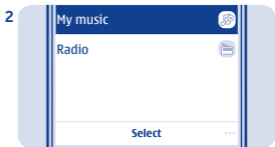
To change the volume, scroll up or down.



Select **Menu > Music**.

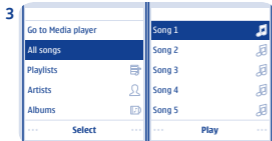


To close the radio, press .



Select **My music**.

Take a photo



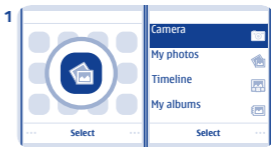
Select the song you want to play.



There's a camera in your phone - just aim and snap!



To pause or resume playing, press the scroll key.



To open the camera, select **Menu > Photos > Camera**.



To close the music player, press .



To zoom in or out, scroll up or down.

Share your content using Nokia Slam



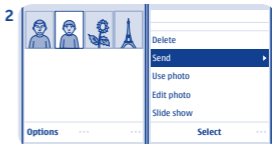
Select .
The photos are saved in My photos.



Share your content easily with Nokia Slam.

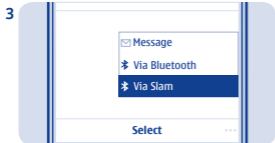


Switch Bluetooth on in both phones.
Your phone must not be hidden.



Select, for example, a photo to share,
and **Options** > **Send**.

Send a photo using Bluetooth



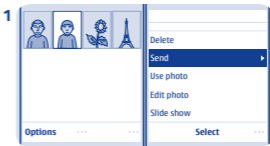
Select **Via Slam**.



Send a photo you have taken to your PC. See [▶ 15](#).



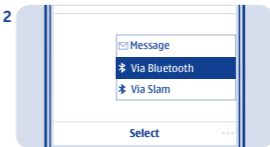
Move your phone close to the other phone.



Select the photo and **Options** > **Send**.

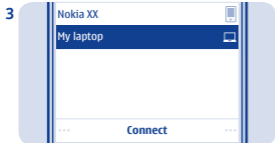


Nokia Slam searches for the nearest phone, and sends the item to it.



Select **Via Bluetooth**.

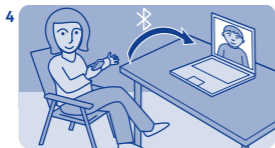
Record a video



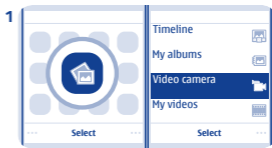
Select the device to connect to. If asked, type in the passcode.



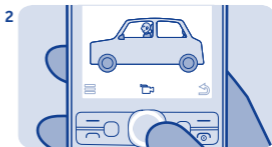
Besides taking photos, you can also record videos with your phone.



The photo is sent to your PC.

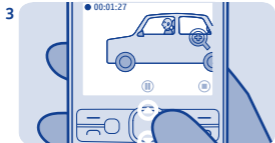


To open the camera, select **Menu > Photos > Video camera**.



To start recording, select .

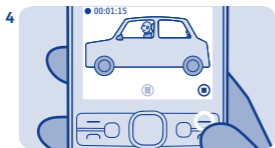
Browse the web



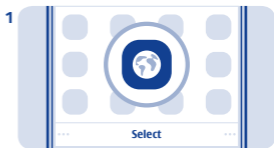
To zoom in or out, scroll up or down.



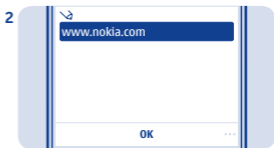
Catch up on the news, and visit your favourite websites.



To stop recording, select .
Videos are saved in My videos.

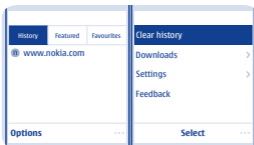


Select **Menu** > **Internet**.



To go to a website, write the web address in the address bar.

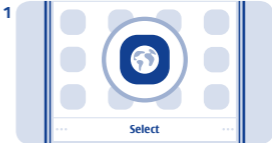
Add a bookmark



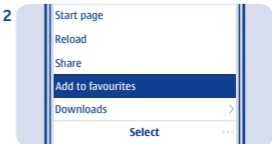
Tip: On the History tab, you can select **Options > Clear history**.



If you visit the same websites often, add them as bookmarks.



Select **Menu > Internet**.



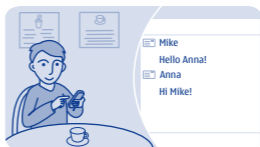
While browsing, select **Options > Add to favourites**.

Set up your mail account

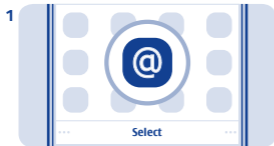
Send a mail



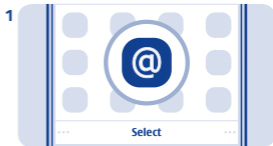
Want to use mail, but don't have a computer? You can use your phone.



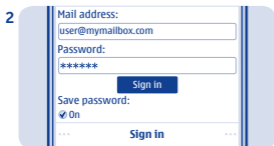
You can read and send mail while on the move.



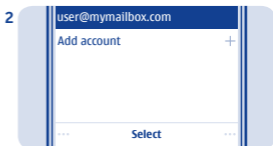
Select **Menu** > **Mail**.



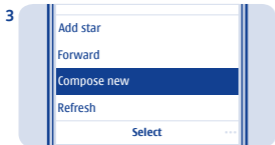
Select **Menu** > **Mail**. If asked, select which SIM to use.



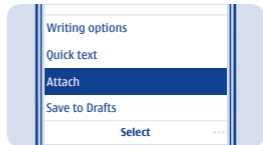
Select a mail service, and sign in.



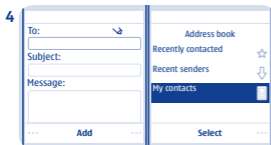
Select a mail account.



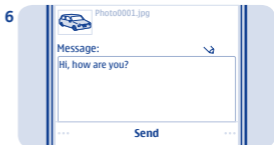
In the mailbox, select **Options** > **Compose new**.



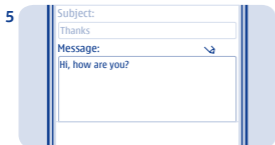
Tip: To attach a file, select **Options** > **Attach**.



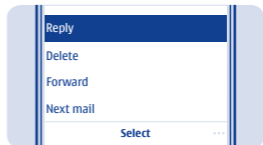
To add a recipient, select **Add**, or manually write the address.



Select **Send**.



Write the subject and your message.

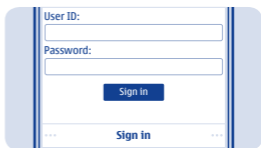


Tip: To reply to a mail, open the mail, and select **Options** > **Reply**.

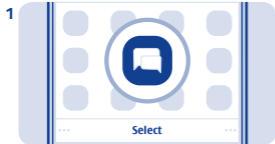
Set up chat in your phone



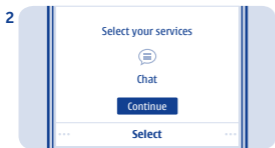
Set up chat to keep in touch with your friends wherever you are.



Tip: If you don't have a chat account, you can sign in to Nokia Chat.



1 Select **Menu** > **Chat**. If asked, select which SIM to use.

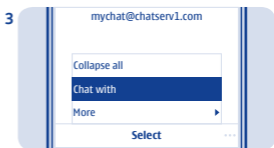


2 Select a service, and sign in.

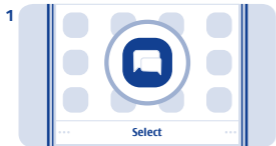
Chat with your friends



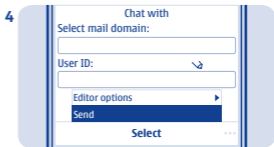
You can chat with your friends online while on the move.



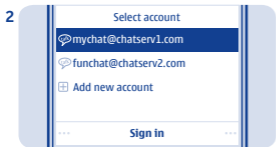
Select **Options** > **Chat with**.



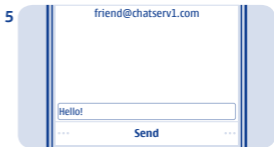
Select **Menu** > **Chat**. If asked, select which SIM to use.



Select a chat service, write the username, and select **Options** > **Send**.

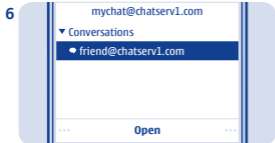


Select a chat account, and sign in.



Write your message in the text box, and select **Send**. See ➔ 10.

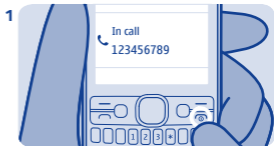
Restore original settings



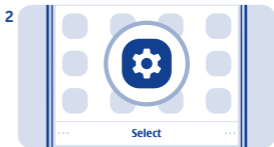
When you want to continue a conversation, select the thread.



If your phone is not working properly, reset the settings.

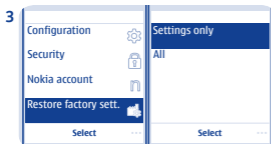


End all calls and connections.

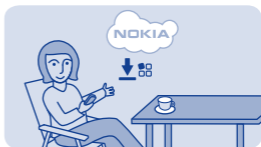


Select **Menu** > **Settings**.

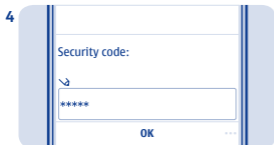
Update phone software using your phone



3 Select **Restore factory sett.** > **Settings only.**



You can update your phone software wirelessly. You can also set your phone to automatically check for updates.

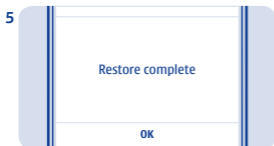



4 Type in the security code, then select **OK.**

You can only update your software when using the SIM in the internal SIM holder.

Select **Menu** > **Settings** and **Phone** > **Device updates.**

1. To check if there is an update, select **Downl. phone software.**
2. To download and install an update, select **Downl. phone software,** and follow the instructions shown on the phone.



5 Your phone switches off and on again. This may take longer than usual. See  16.

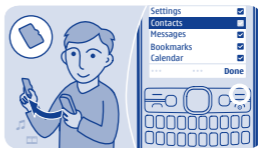
The update may take several minutes. If you encounter problems, contact your network service provider.

Check for updates automatically

Select **Automatic SW update,** and set how often to check.

Back up content to a memory card

Your network service provider may send updates over the air directly to your phone. For more info on this network service, contact your network service provider.



Want to make sure you won't lose any important files? You can back up your phone memory to a compatible memory card.

Select **Menu** > **Settings** > **Sync and backup**.

1. Select **Create backup**.
2. Select what you want to back up, then select **Done**.

Restore a backup

Select **Restore backup**.

Access codes

<p>PIN or PIN2 code (4-8 digits)</p>	<p>These protect your SIM against unauthorised use or are required to access some features.</p> <p>You can set your phone to ask for the PIN code when you switch it on.</p> <p>If not supplied with your card or you forget the codes, contact your service provider.</p> <p>If you type in the code incorrectly three times in a row, you need to unblock the code with the PUK or PUK2 code.</p>
<p>PUK or PUK2 code (8 digits)</p>	<p>These are required to unblock a PIN or PIN2 code.</p> <p>If not supplied with your SIM, contact your service provider.</p>
<p>IMEI number (15 digits)</p>	<p>This is used to identify valid phones in the network. The number can also be used to block, for example, stolen phones. You may also need to give the number to Nokia Care services.</p> <p>To view your IMEI number, dial *#06#.</p>
<p>Lock code (security code) (min. 5 digits)</p>	<p>This helps you protect your phone against unauthorised use.</p> <p>You can set your phone to ask for the lock code that you define. The default lock code is 12345.</p> <p>Keep the code secret and in a safe place, separate from your phone.</p>

If you forget the code and your phone is locked, your phone will require service. Additional charges may apply, and all the personal data in your phone may be deleted.

For more information, contact Nokia Care or your phone dealer.

Troubleshooting



- Longer version of this user guide
- Software update info
- Details about features and technologies, and the compatibility of devices and accessories

If you have an issue, do the following:

- Switch the phone off, and remove the battery. After about a minute, put the battery back in, and switch the phone on again.

• Update your phone software:
Select **Menu > Settings and Phone > Device updates.**

- Restore the original factory settings: End all calls and connections, and select **Menu > Settings and Restore factory sett. > Settings only.**

If your issue remains unsolved, contact Nokia for repair options at www.nokia.com/support. Before sending your phone for repair, back up your data, as all personal data in your phone may be deleted.

You can also go to www.nokia.com/support where you can find:

- Troubleshooting info
- News on apps and downloads

General information

Read these simple guidelines. Not following them may be dangerous or illegal. For further info, read the complete user guide.



SWITCH OFF IN RESTRICTED AREAS

Switch the device off when mobile phone use is not allowed or when it may cause interference or danger, for example, in aircraft, in hospitals or near medical equipment, fuel, chemicals, or blasting areas. Obey all instructions in restricted areas.



ROAD SAFETY COMES FIRST

Obey all local laws. Always keep your hands free to operate the vehicle while driving. Your first consideration while driving should be road safety.



INTERFERENCE

All wireless devices may be susceptible to interference, which could affect performance.



QUALIFIED SERVICE

Only qualified personnel may install or repair this product.



KEEP YOUR DEVICE DRY

Your device is not water-resistant. Keep it dry.



PROTECT YOUR HEARING

To prevent possible hearing damage, do not listen at high volume levels for long periods. Exercise caution when holding your device near your ear while the loudspeaker is in use.

Product and safety information

Feature-specific instructions

The images in this guide may differ from your device screen.

To turn off notifications from apps to avoid data transfer costs, go to **Menu > Apps > My apps > Notifications > Options > Settings**.

➡ 1 Avoid touching the antenna area while the antenna is in use. Contact with antennas affects the communication quality and may reduce battery life due to higher power level during operation.

➡ 2 Use only compatible memory cards approved for use with this device. Incompatible cards may damage the card and the device and corrupt data stored on the card.

➡ 3 **Important:** This device is designed to be used with a standard SIM card (see figure) only. Use of incompatible SIM cards may damage the card or the device, and may corrupt data stored on the card. Please consult your mobile operator for the use of a SIM card that has a mini-UICC cutout.



If you only have one SIM card, put the card into the SIM1 card holder. Some features and

services may only be available when using the SIM card in the SIM1 card holder. If there is a SIM card only in the SIM2 card holder, you can only make emergency calls.

➡ 4 Both SIM cards are available at the same time when the device is not being used, but while one SIM card is active, for example, making a call, the other is unavailable.

➡ 5 If the battery is completely discharged, it may take several minutes before the charging indicator is displayed or before any calls can be made.

➡ 6 To type in the + character, used for international calls, press +.

➡ 7 **Warning:** When the flight profile is activated, you cannot make or receive any calls, including emergency calls, or use other features that require network coverage. To make a call, activate another profile.

➡ 8 Missed and received calls are logged only if supported by the network, and the phone is switched on and within the network service area.

➡ 9 You can only use speed dials for the contacts stored on your phone or on the SIM card in the internal SIM1 card holder.

➡ 10 Using services or downloading content may cause transfer of large amounts of data, which may result in data traffic costs.

➡ 11 You can send text messages that are longer than the character limit for a single message. Longer messages are sent as two or more messages. Your service provider may charge accordingly.

Characters with accents, other marks, or some language options, take more space, limiting the number of characters that can be sent in a single message.

➡ 12 If the item you insert in a multimedia message is too large for the network, the device may automatically reduce the size.

➡ 13 Sending a message with an attachment may be more expensive than sending a normal text message. For more information, contact your service provider.

➡ 14 Only compatible devices can receive and show multimedia messages. Messages may look different in different devices.

➡ 15 Operating the device in hidden mode is a safer way to avoid malicious software. Do not accept Bluetooth connection requests from sources you do not trust. You can also switch the Bluetooth function off when you are not using it.

You can only use Nokia Suite with the SIM card in the internal SIM1 card holder.

➡ 16 Restoring settings does not affect documents or files stored on your phone.

Nokia original accessories

For availability of approved accessories, check with your dealer.

An extensive range of accessories is available for your device. For more details, see www.nokia-asia.com/accessories.

Practical rules about accessories

- Keep all accessories out of the reach of small children.
- When you disconnect the power cord of any accessory, grasp and pull the plug, not the cord.
- Check regularly that accessories installed in a vehicle are mounted and are operating properly.
- Installation of any complex car accessories must be made by qualified personnel only.

Battery

Type: BL-5C

Talk time:

Up to 11 hours.

Standby:

Up to 608 hours.

! **Important:** Battery talk and stand-by times are estimates and only possible under optimal network conditions. Actual battery talk and standby times depend on SIM cards, features used, battery age and condition,

temperatures to which battery is exposed, network conditions, and many other factors, and may be significantly shorter than those specified above. Ringing tones, hands free call handling, use in digital mode, and other features will also consume the battery, and the amount of time a device is used for calls will affect its stand-by time. Likewise, the amount of time that the device is turned on and in the standby mode will affect its talk time.

Tips and Offers

To help you take maximum advantage of your phone and services, you receive free customised text messages from Nokia. The messages contain tips and tricks and support.

To stop receiving the messages, select **Menu > Settings > Nokia account > Tips and offers**.

To provide the service described above, your mobile phone number, the serial number of your phone, and some identifiers of the mobile subscription are sent to Nokia when you use the phone for the first time. Some or all information may also be sent to Nokia when updating software. This information may be used as specified in the privacy policy, available at www.nokia.com.

Network services and costs

Your device is approved for use on the GSM 900, 1800 MHz networks. You need a subscription with a service provider.

Using some features and downloading content require network connection and may result in data costs. You may also need to subscribe to some features.

Take care of your device

Handle your device, battery, charger and accessories with care. The following suggestions help you keep your device in operation.

- Keep the device dry. Precipitation, humidity, and all types of liquids or moisture can contain minerals that corrode electronic circuits. If your device gets wet, remove the battery, and allow the device to dry.
- Do not use or store the device in dusty or dirty areas.
- Do not store the device in high temperatures. High temperatures may damage the device or battery.
- Do not store the device in cold temperatures. When the device warms to its normal temperature, moisture can form inside the device and damage it.
- Do not open the device other than as instructed in the user guide.
- Unauthorised modifications may damage the device and violate regulations governing radio devices.
- Do not drop, knock, or shake the device. Rough handling can break it.
- Only use a soft, clean, dry cloth to clean the surface of the device.
- Do not paint the device. Paint can prevent proper operation.
- Switch off the device and remove the battery from time to time for optimum performance.

- Keep your device away from magnets or magnetic fields.
- To keep your important data safe, store it in at least two separate places, such as your device, memory card, or computer, or write down important info.

Recycle

Always return your used electronic products, batteries, and packaging materials to dedicated collection points. This way you help prevent uncontrolled waste disposal and promote the recycling of materials. Check how to recycle your Nokia products at www.nokia.com/recycling.

For more info on recycling, see “Mobile Phone Recycling Explained in 2 Minutes” <http://www.youtube.com/watch?v=jD5yLicr6Js>

About Digital Rights Management

When using this device, obey all laws and respect local customs, privacy and legitimate rights of others, including copyrights. Copyright protection may prevent you from copying, modifying, or transferring photos, music, and other content.

Digital rights management (DRM) protected content comes with an associated licence that defines your rights to use the content.

With this device you can access content protected with OMA DRM 2.0 and 2.1. If certain DRM software fails to protect the content, content owners may ask that such DRM software's ability to access new DRM-

protected content be revoked. Revocation may also prevent renewal of such DRM-protected content already in your device. Revocation of such DRM software does not affect the use of content protected with other types of DRM or the use of non-DRM-protected content.

If your device has OMA DRM-protected content, use Nokia Suite to back up both the licences and the content. Other transfer methods may not transfer the licences which need to be restored with the content for you to be able to continue the use of OMA DRM-protected content after the device memory is formatted. You may also need to restore the licences if the files on your device become corrupted.

Batteries and chargers

Battery and charger info

Use your device only with an original BL-5C rechargeable battery. Nokia may make additional battery models available for this device.

Charge your device with: AC-11 charger.

The battery can be charged and discharged hundreds of times, but it will eventually wear out. When the talk and standby times are noticeably shorter than normal, replace the battery.

! **Important:** Talk and standby times are estimates only. Actual times are affected by, for example, network conditions, device

settings, features being used, battery condition, and temperature.

Battery safety

Always switch the device off and unplug the charger before removing the battery. To unplug a charger or an accessory, hold and pull the plug, not the cord.

When your charger is not in use, unplug it. Do not leave a fully charged battery connected to a charger, as overcharging may shorten the battery's lifetime. If left unused, a fully charged battery will lose its charge over time.

Always keep the battery between 15°C and 25°C (59°F and 77°F). Extreme temperatures reduce the capacity and lifetime of the battery. A device with a hot or cold battery may not work temporarily.

Accidental short-circuiting can happen when a metallic object touches the metal strips on the battery. This may damage the battery or the other object.

Do not dispose of batteries in a fire as they may explode. Obey local regulations. Recycle when possible. Do not dispose as household waste.

Do not dismantle, cut, crush, bend, puncture, or otherwise damage the battery in any way. If a battery leaks, do not let liquid touch skin or eyes. If this happens, immediately flush the affected areas with water, or seek medical help. Do not modify, attempt to insert foreign objects into the battery, or


immerse or expose it to water or other liquids. Batteries may explode if damaged.

Use the battery and charger for their intended purposes only. Improper use, or use of unapproved or incompatible batteries or chargers may present a risk of fire, explosion, or other hazard, and may invalidate any approval or warranty. If you believe the battery or charger is damaged, take it to a service centre before continuing to use it. Never use a damaged battery or charger. Only use the charger indoors.

Additional safety information

Make an emergency call

1. Make sure the device is switched on.
2. Check for adequate signal strength. You may also need to do the following:
 - Put a SIM card in the device.
 - Switch the call restrictions off in your device, such as call barring, fixed dialling, or closed user group.
 - Make sure the flight profile is not activated.
3. Press the end key repeatedly, until the home screen is shown.
4. Type in the official emergency number for your present location. Emergency call numbers vary by location.
5. Press the call key.
6. Give the necessary info as accurately as possible. Do not end the call until given permission to do so.

 **Important:** Activate both cellular and internet calls, if your device supports internet calls. The device may attempt to

make emergency calls both through cellular networks and through your internet call service provider. Connections in all conditions cannot be guaranteed. Never rely solely on any wireless device for essential communications like medical emergencies.

Small children

Your device and its accessories are not toys. They may contain small parts. Keep them out of the reach of small children.

Medical devices

Operation of radio transmitting equipment, including wireless phones, may interfere with inadequately shielded medical devices' function. Consult a physician or the medical device's manufacturer to determine if it is adequately shielded from external radio energy.

Implanted medical devices

To avoid potential interference, manufacturers of implanted medical devices recommend a minimum separation of 15.3 centimetres (6 inches) between a wireless device and the medical device. Persons who have such devices should:

- Always keep the wireless device more than 15.3 centimetres (6 inches) from the medical device.
- Not carry the wireless device in a breast pocket.
- Hold the wireless device to the ear opposite the medical device.
- Switch the wireless device off if there is any reason to suspect that interference is taking place.


-
- Follow the manufacturer directions for the implanted medical device.

If you have any questions about using your wireless device with an implanted medical device, consult your health care provider.

Accessibility solutions

Nokia is committed to making mobile phones easy to use for all individuals, including those with disabilities. For more information, visit the Nokia website at www.nokiaaccessibility.com.

Hearing

 **Warning:** When you use the headset, your ability to hear outside sounds may be affected. Do not use the headset where it can endanger your safety.

Some wireless devices may interfere with some hearing aids.

Nickel

The surface of this device is nickel-free.

Protect your device from harmful content

Your device may be exposed to viruses and other harmful content. Take the following precautions:

- Be cautious when opening messages. They may contain malicious software or otherwise be harmful to your device or computer.
- Be cautious when accepting connectivity requests, browsing the internet, or downloading content. Do not accept

Bluetooth connections from sources you do not trust.

- Only install and use services and software from sources that you trust and that offer adequate security and protection.
- Install antivirus and other security software on your device and any connected computer. Only use one antivirus app at a time. Using more may affect performance and operation of the device and/or computer.
- If you access preinstalled bookmarks and links to third party internet sites, take the appropriate precautions. Nokia does not endorse or assume liability for such sites.

Operating environment

This device meets radio frequency exposure guidelines in the normal use position at the ear or at least 1.5 centimetre (5/8 inch) away from the body. Any carry case, belt clip, or holder for body-worn operation should not contain metal and should position the device the above-stated distance from your body.

The sending of data files or messages requires a quality network connection and may be delayed until such a connection is available. Follow the separation distance instructions until the sending is completed.

Vehicles

Radio signals may affect improperly installed or inadequately shielded electronic systems in vehicles. For more info, check with the manufacturer of your vehicle or its equipment.

Only qualified personnel should install the device in a vehicle. Faulty installation may be dangerous and invalidate your warranty. Check regularly that all wireless device equipment in your vehicle is mounted and operating properly. Do not store or carry flammable or explosive materials in the same compartment as the device, its parts, or accessories. Do not place your device or accessories in the air bag deployment area.

Potentially explosive environments

Switch your device off in potentially explosive environments, such as near petrol pumps. Sparks may cause an explosion or fire resulting in injury or death. Note restrictions in areas with fuel; chemical plants; or where blasting operations are in progress. Areas with a potentially explosive environment may not be clearly marked. These usually are areas where you are advised to switch your engine off, below deck on boats, chemical transfer or storage facilities, and where the air contains chemicals or particles. Check with the manufacturers of vehicles using liquefied petroleum gas (such as propane or butane) if this device can be safely used in their vicinity.

Certification information (SAR)

This mobile device meets guidelines for exposure to radio waves.

Your mobile device is a radio transmitter and receiver. It is designed not to exceed the limits for exposure to radio waves recommended by international guidelines. These guidelines were developed by the

independent scientific organisation ICNIRP and include safety margins designed to assure the protection of all persons, regardless of age and health.

The exposure guidelines for mobile devices employ a unit of measurement known as the Specific Absorption Rate or SAR. The SAR limit stated in the ICNIRP guidelines is 2.0 watts/kilogram (W/kg) averaged over 10 grams of tissue. Tests for SAR are conducted using standard operating positions with the device transmitting at its highest certified power level in all tested frequency bands. The actual SAR level of an operating device can be below the maximum value because the device is designed to use only the power required to reach the network. That amount changes depending on a number of factors such as how close you are to a network base station.

The highest SAR value under the ICNIRP guidelines for use of the device at the ear is 0.70 W/kg.

Use of device accessories may result in different SAR values. SAR values may vary depending on national reporting and testing requirements and the network band. Additional SAR information may be provided under product information at www.nokia.com.

DECLARATION OF CONFORMITY

CE 0168

Hereby, NOKIA CORPORATION declares that this RM-862 product is in compliance with the essential requirements and other relevant provisions of Directive 1999/5/EC. A copy of the Declaration of Conformity can be found at <http://www.nokia.com/global/declaration/declaration-of-conformity>.

© 2012 Nokia. All rights reserved.

Nokia, Nokia Connecting People are trademarks or registered trademarks of Nokia Corporation. Nokia tune is a sound mark of Nokia Corporation. Other product and company names mentioned herein may be trademarks or tradenames of their respective owners.

Reproduction, transfer, distribution, or storage of part or all of the contents in this document in any form without the prior written permission of Nokia is prohibited. Nokia operates a policy of continuous development. Nokia reserves the right to make changes and improvements to any of the products described in this document without prior notice.



Includes RSA BSAFE cryptographic or security protocol software from RSA Security.



Java
POWERED Java and all Java-based marks are trademarks or registered trademarks of Sun Microsystems, Inc.

The Bluetooth word mark and logos are owned by the Bluetooth SIG, Inc. and any use of such marks by Nokia is under license.

This product is licensed under the MPEG-4 Visual Patent Portfolio License (i) for personal and noncommercial use in connection with information which has been encoded in compliance with the MPEG-4 Visual Standard by a consumer engaged in a personal and noncommercial activity and (ii) for use in connection with MPEG-4 video provided by a licensed video provider. No license is granted or shall be implied for any other use. Additional information, including that related to promotional, internal, and commercial uses, may be obtained from MPEG LA, LLC. See <http://www.mpegla.com>.

To the maximum extent permitted by applicable law, under no circumstances shall Nokia or any of its licensors be responsible for any loss of data or income or any special, incidental, consequential or indirect damages howsoever caused.

The contents of this document are provided "as is". Except as required by applicable law, no warranties of any kind, either express or implied, including, but not limited to, the implied warranties of merchantability and fitness for a particular purpose, are made in relation to the accuracy, reliability or contents of this document. Nokia reserves the right to revise this document or withdraw it at any time without prior notice.

The availability of products, features, apps, and services may vary by region. For more info, contact your Nokia dealer or your service provider. This device may contain commodities, technology or software subject to export laws and regulations from the US and other countries. Diversion contrary to law is prohibited.

Nokia does not provide a warranty for or take any responsibility for the functionality, content, or end-user support of third-party apps provided with your device. By using an app, you acknowledge that the app is provided as is. Nokia does not make any representations, provide a warranty, or take any responsibility for the functionality, content, or end-user support of third-party apps provided with your device.

The availability of Nokia services may vary by region.