

"Fun-to-Design"

HyDraw V500

License Server



HyDraw[®] V500

License Server



VEST, Inc. 3250 W, Big Beaver Road, Suite 440, Troy, MI 48084 USA

Tel: 01 248 649 9550 Fax: 01 248 649 9560 Email: sales@VESTusa.com Visit: www.VESTusa.com

VEST, Inc.

HyDraw[®] V500 Software Product License Agreement

Notice: Read this before installing the software.

Carefully read the terms and conditions of this agreement before opening the product package. Opening the package indicates your acceptance of these terms and conditions. If you do not agree with the terms and conditions of this Agreement, promptly return the package unopened to the place where you obtained it.

Definitions

The Software Product is licensed (not sold) to you. The Software product includes all copies of the Software Product and its related supporting materials.

License

VEST, Inc. (we, our, us) grants you a personal, non-transferable, and non-exclusive license to use the Software Product in the specified quantity only.

You may not:

1. distribute, sublicense or copy any portion of the Licensed Software product;
2. modify or prepare derivative works from the Licensed Software Product;
3. transmit the Licensed Software product electronically by any means; or
4. use the Licensed Software product in multiple computer or multiple user arrangements unless that use is covered by individual license for each computer or user.

You agree that the Licensed Software product belongs to us and you agree to keep confidential and use your best efforts to prevent and protect the contents of the Licensed Software Product from unauthorized disclosure.

Limited

1. For 90 days from the date of shipment, we warrant that the media (for example, CD) on which the Licensed Software Product is contained will be free from defects in materials and workmanship. The warranty does not cover damage caused by viruses, improper use or neglect.

We do not warrant the contents of the Licensed Software Product (it is furnished "AS IS" and without warranty as to the performance or results you may obtain by using the Licensed Software Product) or that it will be error free.

You assume the entire risk as to the results and performance of the Licensed Software Product.

To get media warranty service during the 90-day warranty period, you may return the Product (postage paid) with a description of the problem to the place where you obtained it. The defective media on which the Licensed Software Product is contained will be replaced at no additional charge to you.

2. If you do not receive media that is free from defects in materials and workmanship during the 90-day warranty period, you will receive a refund or credit to your account for the amount you paid for the Licensed Software Product returned.

Disclaimer of Warranty

YOU UNDERSTAND AND AGREE AS FOLLOWS:

1. Warranties in this agreement replace all other warranties, express or implied, including any warranties of merchantability or fitness for a particular purpose. We disclaim and exclude all other warranties.
2. We will not be liable for any loss or damage caused by delay in furnishing a Licensed Software Product or any other performance under this Agreement.
3. Our entire liability and your exclusive remedies for our liability of any kind (including liability for negligence except liability for personal injury caused solely by our negligence) for the Licensed Software Product covered by the Agreement and all other performance or non-performance by us under or related to this Agreement are limited to the remedies specified by this Agreement.
4. In no event will our liability of any kind include any special incidental or consequential damages, even if we have knowledge of the potential loss or damage.
5. Special notice to consumers: some states do not allow the exclusion of implied warranties so the above exclusion may not apply to you. The warranty gives you special legal rights, and you may also have other rights, which vary from state to state.

Termination

This Agreement is effective until terminated. You may terminate it any time by destroying the Licensed Software Product. It will also terminate if you do not comply with any term or condition of this Agreement. You agree upon termination to destroy the Licensed Software Product.

General

You are responsible for installation, management and operation of the Licensed Software Product.

Contents

1.	Installation	1
2.	HyDraw V500 License Server Configuration	2
3.	Authorization	3
4.	Starting HyDraw V500 License Server	4
5.	License Server Settings	5
6.	Configure HyDraw V500 Client	6

1. Installation

The installation program creates all the required subdirectories and installs the HyDraw® License Server on your system.

System Requirements

- Windows XP/Windows 2003/Windows Vista/Windows 2008/Windows 7 (32/64-Bit) operating system.
- Microsoft .NET Framework Version 3.5 or higher.

Software Installation

1. Insert the HyDraw® V500 License Server CD into the CD-ROM drive.
2. Auto installation starts and you are guided through the installation process.

If Auto Run is not set, then:

- 1 On the Start menu, click **Run**.
- 2 Browse to the setup.exe program on the CD-ROM drive.
- 3 Select **Setup.exe**, and then click **Open**.
- 4 Click **OK**.

The HyDraw V500 License Server installation program starts and guides you through the installation process.

3. Once complete, restart your computer for the changes to take effect.

HyDraw License Server is now installed on your system. HyDraw V500 License Server and License Server Settings are displayed in the HyDrawV500 License Server menu.

```
Windows Start
> All Programs
  > VEST
    > HyDrawV500 License Server
```

A HyDraw V500 License Server shortcut icon is created on the desktop.

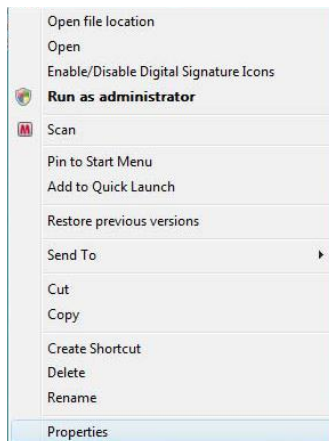
Note

- Install only on the computer that will control licensing for all HyDraw V500 clients on a network.

2. HyDraw V500 License Server Configuration

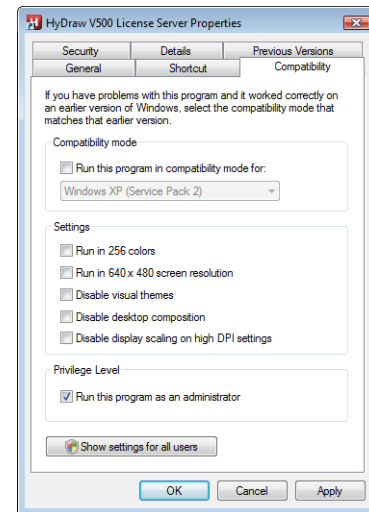
HyDraw® V500 License Server configuration for Microsoft Vista and Windows 7 Operating System.

1. Right click on the HyDraw® V500 License Server desktop shortcut and click **Properties** from the context menu.



HyDraw V500 License Server: Context Menu

2. Select the **Compatibility** tab in the HyDraw V500 License Server Properties dialog box.
3. Select **Run this program as an administrator** in the Privilege Level section.
4. Click **OK**.

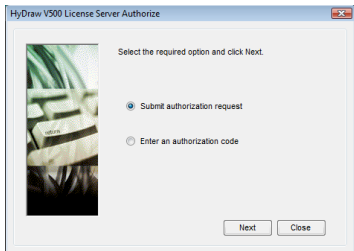


HyDrawV500 License Server Properties dialog box

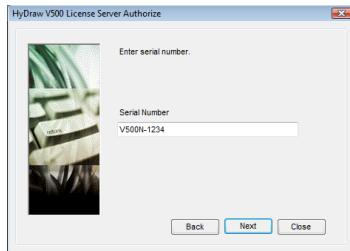
3. Authorization

A software lock protects HyDraw® V500 and the software needs to be authorized before use.

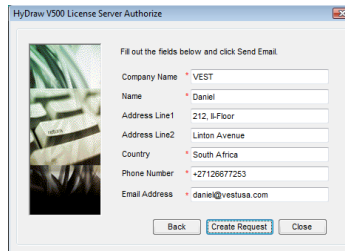
3.1 Submit Authorization Request



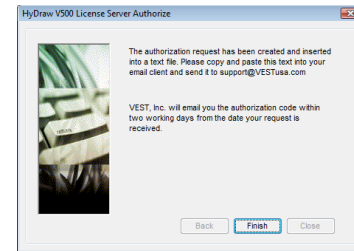
Submit authorization request



Enter serial number



Contact details



Authorization request created

1. Double click the HyDraw V500 License Server desktop icon.
If HyDraw® has not yet been authorized, the HyDraw V500 Authorize dialog box displays.
2. Select **Submit authorization request**.
3. Click **Next**.

4. Enter the **Serial Number** provided when you purchased the software.
The serial number should be always prefixed with “V500N”.

5. Click **Next**.

6. Enter your contact details.
7. Click **Create Request**.

Text of the authorization request is generated and displayed in a text file.

Copy and paste this text into your email client and send to support@VESTusa.com.

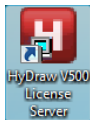
8. Click **Finish**.
The dialog box closes.
9. Wait for the authorization code from VEST.
Once received, save the authorization file on your system, and refer to the next section.

4. Starting HyDraw V500 License Server

1 Start HyDraw® V500 License Server

1. Double click the HyDraw V500® License Server desktop icon.
2. Click Start > All Programs > VEST > **HyDraw V500 License Server**

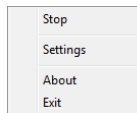
HyDraw V500 License Server starts and the icon appears in the System tray.



HyDraw V500 License server desktop icon

2 Stop License Server

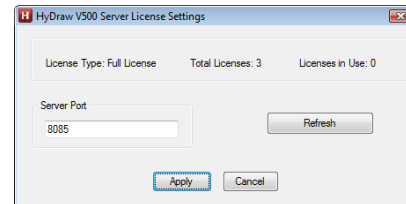
Right click the HyDraw V500 License Server icon in the System tray and click **Stop**.



Context menu

3 Configure Port and View the Settings

Right click the HyDraw V500 License Server icon in the System tray and click **Stop**.



HyDraw V500 Server License Settings

4 About License Server

Right click the HyDraw V500 License Server icon in the System tray and click **About**.

The about dialog box displays the Server Version, Build, and Serial number details.



About License Server

5 Exit License Server

Right click the HyDraw V500 License Server icon in the System tray and click **Exit**.

5. License Server Settings

The License Server settings enable you to configure the port and monitor license usage.

- Click Start
 - > All Programs
 - > VEST
 - > HyDraw V500 License Server
 - > **License Server Settings**

The HyDraw® V500 License Server Settings dialog box displays.

The license type, total number of licenses, and licenses currently in use are displayed in the dialog box.

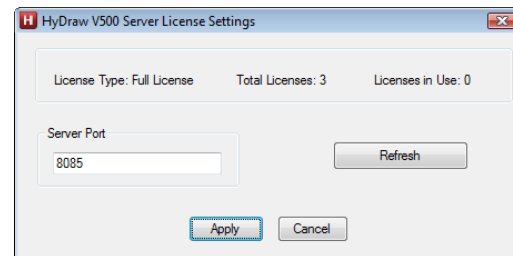
- Click **Refresh** to refresh and update the license usage information.
- Enter **Server Port**.

*The port used by the License Server is displayed in the dialog box.
The default port is 8085.*

Change the port, if required.

The port number used for the License Server must be greater than or equal to the default port number, i.e. 8085.

- Click **Apply**.



HyDraw V500 License Server Settings

6. Configure HyDraw V500 Client

After installing the License Server, configure each HyDraw[®] V500 client to use the license.

1. Click Start
 - > All Programs
 - > VEST
 - > HyDraw V500
 - > **HyDraw License**

The HyDraw V500 License Options dialog box displays.

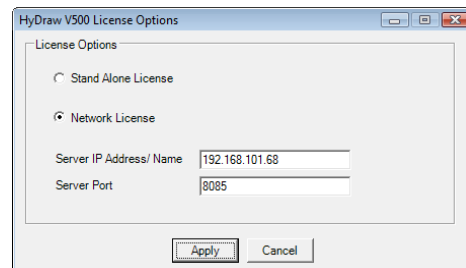
2. Select **Network License**.
3. Enter the **Server IP address** or the name.
4. Enter the **Server port** number.

The default port is 8085.

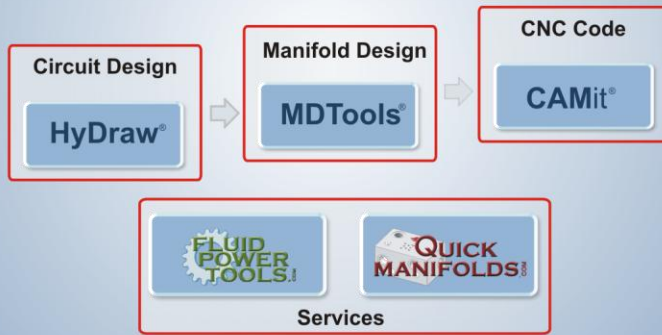
The port specified on the client should match the port settings on the server.

5. Click **Apply**.

The HyDraw V500 client is configured to use the Network License.



HyDraw V500 License Options



VEST, Inc..
3250 W. Big Beaver Road, Suite 440,
Troy, MI 48084 USA.

Call: 01 (248) 649-9550
Email: sales@VESTusa.com
Visit: VESTusa.com

© Copyright 2010, VEST, Inc.
All rights reserved.