



ELECTRONIC STEAM IRON

Model: G-966STJ-E/G-966STJ-E-M




Instruction Manual

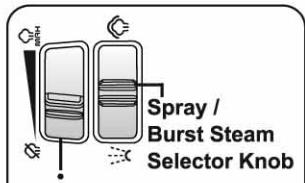
IMPORTANT SAFEGUARDS

1. Make sure to read all the safety precautions below and look at the illustrations before you start using the appliance.
2. Use the appliance for its intended use only described in this manual.
3. The appliance is intended for household use only.
4. In order to protect against the risk of electric short, do not immerse iron power base into water or any other liquids.
5. Connect the appliance only to an alternating current of the voltage specified on the rating plate and only to an earthed socket. To avoid a circuit overload, do not operate another high wattage appliance in the same circuit.
6. Turn the appliance to OFF before plugging or unplugging from outlet. Never yank cord to disconnect from outlet; instead, grasp plug and pull to disconnect.

7. Do not allow power cord or supply hose to touch hot surface.
8. Unplug the appliance from main socket before filling or empty or when not in use.
9. Do not operate the appliance with a damaged cord or if the appliance has been dropped or damaged. To avoid a hazard such as the risk of electric shock, do not disassemble the appliance, it must be taken to a qualified serviceman or manufacturer or its service agent for examination and repair. Incorrect re-assembly can cause a risk of electric shock when the iron is used.
10. Place the iron out of reach of children; close supervision is necessary for any appliance being used by or near children. Do not leave the iron unattended while connected to the supply mains.
11. During use, always place its stand on a stable, level and horizontal surface or ironing board.

12. Always place the iron on its stand, and do not allow the hot soleplate touch power cord or supply hose.
13. Burns can occur from touching hot metal parts, hot water or steam. Use caution when using the appliance.
14. Never use the iron facing towards people because the steam can cause burns.
15.  The surfaces are liable to get hot during use.
16. Never twist the supply hose during use.
17. The appliance must be used and rested on a stable, level and horizontal surface.
18. When placing the iron on its stand, ensure that the surface on which the stand is placed is stable.
29. The iron is not to be used if it has been dropped, if there are visible signs of damage or if it is leaking.
20. The iron must not be left unattended while it is connected to the supply mains.

21. The appliance must be rest or stocked on a stable, level and horizontal surface.
22. This appliance can be used by children aged from 8 years and above and persons with reduced physical, sensory or mental capabilities or lack of experience and knowledge if they have been given supervision or instruction concerning use of the appliance in a safe way and understand the hazards involved, children shall not play with the appliance. cleaning and user maintenance shall not be made by children without supervision.
23. Keep the iron and its cord out of reach of children less then 8 years of age when it is energized or cooling down.



Spray /
Burst Steam
Selector Knob

ADJUSTABLE
STEAM KNOB

5. LINEN
4. COTTON
3. RAYON
2. POLYESTER
1. NYLON
↓



LMD DISPLAY

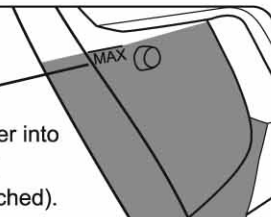
FABRIC SETTING
BUTTON

SWIVEL
CORD GUARD

HANDLE

RESERVOIR

Pour 10.5 ounces
(300ml) of tap water into
the reservoir (until
MAX fill line is reached).



PARTS AND FEATURE



FILL COVER
RELEASE
BUTTON

There is an
Anti-Calc Box
in the reservoir
which purify
hard water and
prolong the
working
life of
your
iron.



SPRAY NOZZLE

FILL COVER

PHOENOLIC BASE

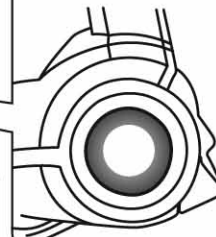
SELF
CLEANING
BUTTON



↑ Trigger

SPRAY /
BURST BUTTON

POWER INDICATOR LIGHT



The iron is first
plugged in,
and will
remain on
until the iron
shut off
after 1 hour

SOLEPLATE

STEAM HOLE

Never iron over zippers, pins,
metal rivets, or snaps, as these
may scratch the soleplate.



BEFORE FIRST USE

Steam vents should be cleaned before first use.



Prepare iron for steam ironing, then iron over an old cloth for a few minutes while letting the iron steam. Press the Blast button several times to clean the vents.

Many irons spit or sputter during the first few uses with tap water.



This happens as the steam chamber becomes conditioned. This will stop after a few uses.

During first use of the iron, it may appear to smoke



This will stop and does not indicate a defect or hazard.

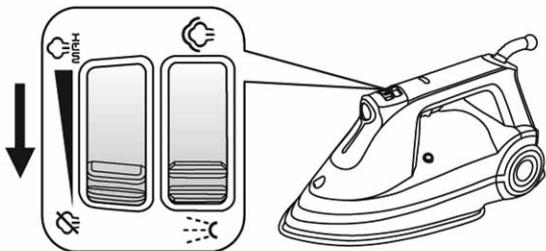
Fabric Setting Chart

STEAM SETTING	TEMPERATURE	IRON INSTRUCTION
<p>Dry Ironing</p> <div style="background-color: black; color: white; padding: 5px; text-align: center;"> 5.LINEN 4.COTTON 3.RAYON 2.POLYESTER 1.NYLON ⬇️ </div> <div style="border: 1px solid black; border-radius: 15px; padding: 5px; text-align: center; margin-top: 10px;"> SETTING </div>	<p style="text-align: center;">☼</p> <p>① Nylon</p> <p>② Polyester</p> <p>③ Rayon</p>	<p>Stand-By</p> <p>Dry iron using spray if necessary</p> <p>Iron while fabric is still damp</p> <p>Dry iron using spray if necessary</p>
<p>Steam Range</p> <div style="background-color: black; color: white; padding: 5px; text-align: center;"> 5.LINEN 4.COTTON 3.RAYON 2.POLYESTER 1.NYLON ⬇️ </div> <div style="border: 1px solid black; border-radius: 15px; padding: 5px; text-align: center; margin-top: 10px;"> SETTING </div>	<p>④ Cotton</p> <p>⑤ Linen</p>	<p>Iron while still damp; use steam and/or spray</p> <p>Iron on wrong side of fabric while still damp</p>

USING YOUR IRON

DRY IRONING

1. Plug in iron.
2. Turn steam knob to the Dry iron "☒" position.



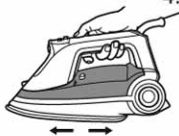
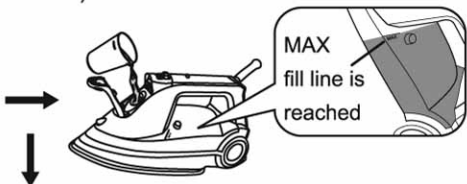
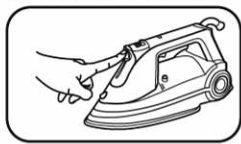
2. Press fabric

setting button to set the fabric setting indicator to the desired position. Allow the iron to be heated up until the fabric setting indicator light stops blinking and the buzzle beeps.

4. To turn iron off, set Fabric Setting indicator light to "⏻" and unplug iron.

Fill Reservoir

1. Unplug iron. Turn steam knob to the Dry Iron position.
2. Press and release the fill cover release button to open fill cover Using a cup, slowly pour 10.5 ounces (300ml) of tap water into the Reservoir (or until MAX fill line is reached.)
3. Close the fill cover.




4. Hold the iron in horizontal direction and then move the iron from front to back for about 30 seconds so that limescales in water can be purified by the ion exchange resin in the anti-calc box.

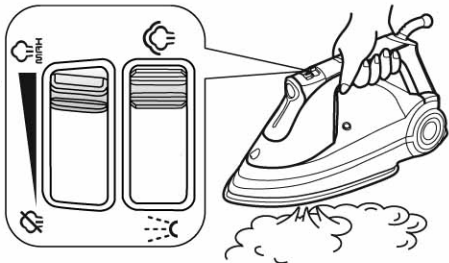


Note: when using distilled water, you can mix it with tap water in a proportion of 50%.



USING YOUR IRON

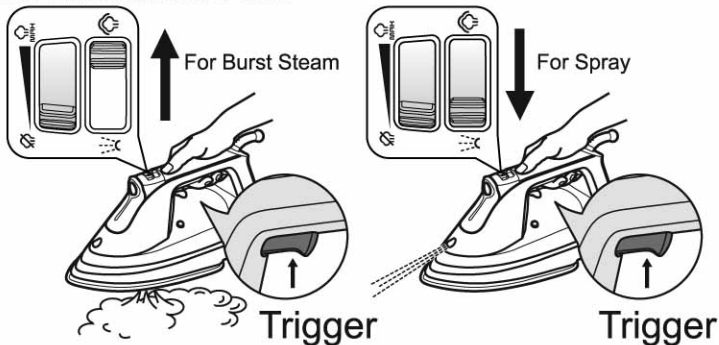
Steam Ironing

1. Plug in iron.
2. Press Fabric setting button. With iron in an upright position, set Fabric Setting Indicator to desired setting in steam range. Allow the iron to heat until the fabric setting indicator light stops blinking and the buzzer beeps. Do not preheat the iron with the soleplate facing down.
3. Set steam Knob to desired steam output.
4. To turn iron off, turn to Dry Iron position. Press Fabric setting button, Set Fabric Setting Indicator Light to "  " and empty water from the iron following directions.



Burst of Steam and Spray

Set Spray & Burst Selector knob to "  ", then press the Spray/Burst button for an extra blast of steam. Set Spray & Blast Selector to "  " then press the Spray / Burst Button to release a fine spray of water for difficult wrinkles in cotton or linen.



USING YOUR IRON

Vertical Steam

1. Follow steps 1 through 2 in "To Steam Iron" and set Spray & Burst Selector knob to "☞"
2. Hang garment in a location that is not susceptible to damage from heat or moisture. Do not hang in front of wallpaper, window, or mirror.
3. Hold iron about 6 inches away from garment and press and release the Spray/Burst button to steam out wrinkles. Do not press the Spray/Burst Button more than once every 2 seconds.
4. Turn iron off and turn Steam Knob to Dry Iron position. Press Fabric Setting Button to set Fabric Setting Indicator light to "🔌" and then unplug iron.
5. Empty water from the Reservoir.

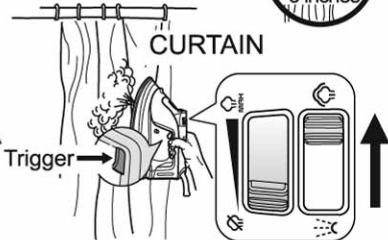
VERTICAL STEAM

The subject must be 6 inch distance from steam iron



VERTICAL STEAM

The subject must be 6 inch distance from steam iron



Note: Do not allow hot soleplate to touch delicate garments.

Anti-Drip System



This appliance has a safety mechanical protection which can protect water drip from the soleplate when the temperature of steam chamber is so low that it cannot provide steam. therefore it is normal that the steam go out of the steam outlet un-continuously during use.

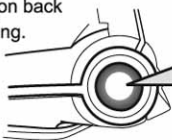
USING YOUR IRON

Power Indicator Light(G-966STJ-E)

The Power indicator light comes on when the iron is first plugged in, and will remain on until the iron shut off. The iron will shut off after 1 hour , the buzzer will beep six times and the Fabric Setting indicator light "⏻" will slowly blink and Power indicator light turn off. Press the Fabric setting button to turn the iron back on for another hour of ironing.

Power Indicator Light(G-966STJ-E-M)

When iron is stationary in horizontal position for about 30 seconds or in vertical position for about 8 minutes,the buzzer will beep six times and the Fabric Setting indicator light "⏻" will slowly blink and Power indicator light turn off.The unit come into auto-shut off mode. It will resume normal operation by moving the iron.

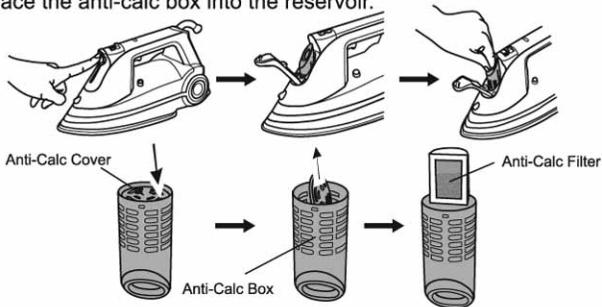


The iron is first plugged in, and will remain on until the iron shut off

Anti-Calc System

There is an Anti-calc box in the reservoir to purify hard water and reduce the build-up of limescale which occurs during steam ironing in reservoir opening. Using and replacing the filter in Anti-calc box will prolong the working life of your iron.

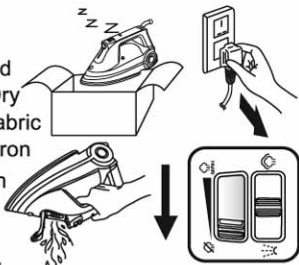
1. The Iron exchange resin should be replaced with a new one after two months, in case of using one time each day, and you can contact with manufacturer or agency for purchasing new ion exchange resin.
2. Open the fill cover and remove the anti-calc box from the reservoir.
3. Press the anti-calc cover downwards to take it out of the anti-calc box, and then take out the anti-calc filter. Replace the new anti-calc filter into the anti-calc box and replace the anti-calc cover.
4. Replace the anti-calc box into the reservoir.



CARING FOR YOUR IRON

Iron

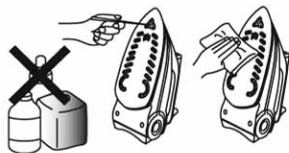
1. The reservoir of your iron should be emptied after each time use. Turn Steam Knob to Dry Iron . Press Fabric Setting Button to Set Fabric Setting Indicator light to "⏻" Unplug the iron and hold over a sink. Turn iron upside down until reservoir opening is parallel with sink. Water will run out of reservoir opening.



2. After iron has completely cooled, loop cord loosely around iron as applicable, and store in an upright position. **Do not store iron laying flat on soleplate.**

Soleplate

1. Never iron over zippers, pins, metal rivets, or snaps, as these may scratch the soleplate.
2. To clean occasional build-up on the soleplate, wipe with a sudsy cloth. Do not use abrasive cleansers or metal scouring pads.
3. Always store iron upright in the heel rest position.



Self-Clean function

To keep the steam vents clear of any build-up, follow these instructions each time you iron using steam.

1. Set Fabric Setting Indicator light to "⏻" and set Steam Knob to Dry Iron position. Fill iron with water to 1/2 of its maximum capacity.
2. Set Fabric Setting Indication light to Linen setting and let iron heat until indicator light stops blinking. Keep Steam Knob set on Dry Iron .
3. Set Fabric Setting Indicator light to OFF. Unplug iron and hold over a sink with soleplate facing down.
4. Turn Steam Knob to Steam position. Press and hold the Self-clean Button. Boiling water and steam will flow out of steam vents. Allow all water to drain from iron.
5. Gently move iron front to back to allow water to clean entire soleplate area.
6. If water still remains inside of sole-plate, reheat iron as indicated in Step 2. Boiling water and steam could still flow out of steam vents.



TROUBLE SHOOTING

PROBLEM	THINGS TO CHECK
Iron won't heat	<ul style="list-style-type: none">• Is the iron plugged in and the outlet working? Check the outlet by plugging in a lamp.• Is the fabric setting indicator at the position "⏻"?• Does the iron shut off and the indicator light blink? If so, press fabric setting button.
Water is leaking out of the iron	<ul style="list-style-type: none">• Do not overfill the reservoir.• If steam ironing, is Steam knob in a steam position, Fabric Setting Indicator light in the steam range, and did the iron have enough time to preheat?• If dry ironing, make sure the Steam knob is in the DRY IRON position.
Iron won't steam	<ul style="list-style-type: none">• Check the water level.• Has the iron had enough time to preheat?• Is Steam knob in the STEAM position?• Does anti-drip function not allow steam when iron is at a low temperature that would result in water leaking from the soleplate.
Iron leaves spots on clothing	<ul style="list-style-type: none">• ALWAYS empty the reservoir of the iron after using. Water left in the reservoir may discolor clothing and soleplate.
Wrinkles not removed	<ul style="list-style-type: none">• Check Fabric setting indicator is set to correct fabric.
Fabric / clothing scorched	<ul style="list-style-type: none">• Check Fabric setting indicator and set to lower setting. Allow iron to cool down 5 minutes before continuing.

TROUBLE SHOOTING

PROBLEM	THINGS TO CHECK
Twisted cord	<ul style="list-style-type: none">• If the iron cord should become twisted, turn Fabric setting indicator to "⏻" and unplug iron. Let cool. Empty water from iron. Hold iron cord in the middle of entire length. Let plug and iron dangle freely until cord uncoils. This will extend the life of your iron cord.
Fabric setting indicator light (blue light) quickly or slowly blinking	<ul style="list-style-type: none">• The desired temperature isn't reach, wait a moment.
Fabric setting indicator light "⏻" slowly blinking and power indicator come off	<ul style="list-style-type: none">• The iron has work for 1 hour, Press the Fabric setting button to turn the iron back on for another hour of ironing.



Never dispose of your product with other household waste. Please inform yourself about the local rules on the separate collection of electrical and electronic products. The correct disposal of your old product helps prevent potentially negative consequences on the environment and human health.

