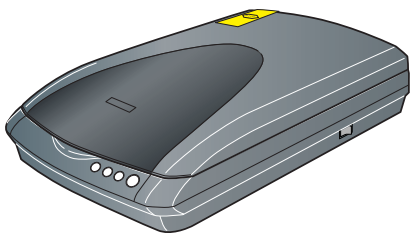


Start Here

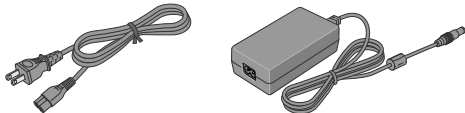
EPSON Perfection® 3170 Photo

1 Unpack Your Scanner

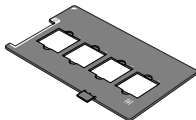
- 1 Make sure you have all the accessories shown below for your EPSON® scanner:



Perfection 3170 Photo scanner
(cover includes film adapter)



Power cord and AC adapter



35 mm slide holder



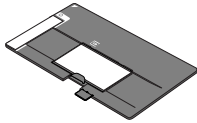
35 mm film and
negative holder



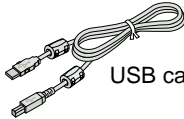
CD-ROM with
EPSON Scan driver,
software, and
electronic manuals



Adobe® Photoshop®
Elements 2.0 CD-ROM

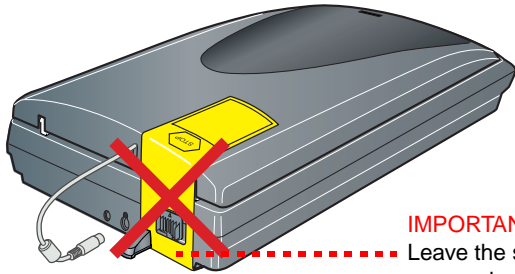


Medium format (120/220)
transparency holder



USB cable

- 2 Remove all the packing tape, but leave the large sticker in place until you are instructed to remove it.



IMPORTANT!

Leave the sticker in place until
you are instructed to remove it

2 Install the Software

Wait! You must install your software before connecting the scanner to your computer. The installation process may take several minutes. Be sure to close all open programs and turn off any virus protection programs.

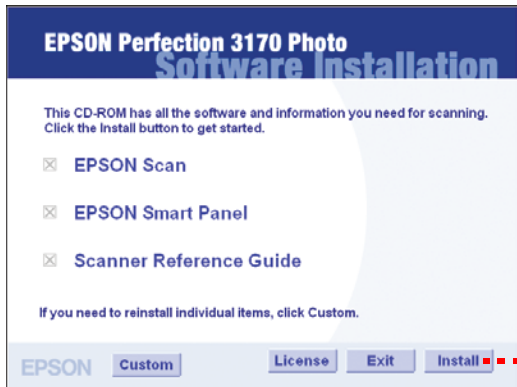
If you don't already have Adobe Photoshop or Photoshop Elements on your computer, install Photoshop Elements from the CD-ROM included with your scanner.

Note: The software works with Windows® 98, Me, 2000, and XP, and Macintosh® OS 8.6 to 9.x and OS X 10.2.x. Follow the steps below (for Windows), or the steps in the next column (for Macintosh).

Windows

- 1 Insert the scanner software CD-ROM in the CD-ROM or DVD drive. The installer starts automatically. If it doesn't start, do the following:
 - Windows XP: Click **Start**, click **My Computer**, then double-click **EPSON**.
 - Windows 98, Me, and 2000: Double-click **My Computer**, then double-click **EPSON**.
- 2 When you see the message about disabling your antivirus software, click **Continue**.
- 3 Read the license agreement, then click **Agree**.

- 4 At the Software Installation screen, click **Install**.



Click **Install**

- 5 Follow the on-screen instructions to install each program, including ABBYY® FineReader® and Presto! BizCard. Note that EPSON Smart Panel™ installs in several steps.
- 6 At the end of the installation, click **Exit**.
- 7 When you see the Product Registration screen, register your scanner as instructed. At the last screen, click **Done** or close your browser.

Macintosh

- 1 Insert the scanner software CD-ROM in the CD-ROM or DVD drive. The installer starts automatically. If it doesn't start, double-click the **EPSON** CD-ROM icon.
- 2 If you are using Mac OS X, double-click the **Mac OS X** folder in the **EPSON** folder, then double-click the **EPSON** icon.

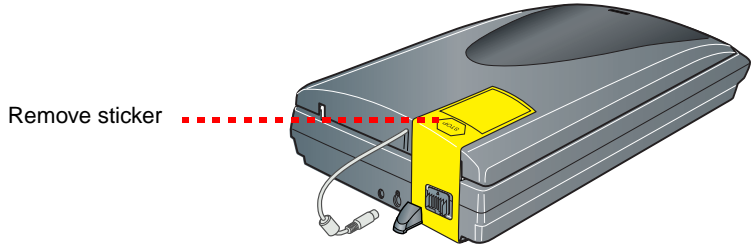
If you are using Mac OS 8.6 to 9.x, double-click the **EPSON** icon in the **EPSON** folder.
- 3 When you see the message about disabling your antivirus software, click **Continue**.
- 4 If you see a license agreement, click **Agree** to continue.
- 5 At the Software Installation screen, click **Install**. Enter your Administrator name and password if necessary.

Note: If you're installing on Macintosh OS 8.6 to 9.x, you may see a prompt to update your Carbon Library. After the CarbonLib installation is complete and you've restarted your system, double-click the **EPSON** icon, then click **Install** to continue the installation.
- 6 Follow the on-screen instructions to install each program, including ABBYY FineReader and Presto! BizCard. Click **Quit** to continue, as needed. Note that EPSON Smart Panel installs in several steps.
- 7 At the end of the installation, click **Exit**.
- 8 If you see a Product Registration screen, register your scanner as instructed. At the last screen, click **Done** or close your browser.
- 9 Follow the instructions below to connect the scanner. Then restart your system to fully activate the scanner and software.

3 Connect the Scanner

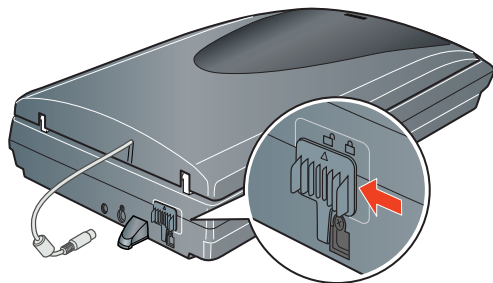
After your software is installed, it's time to get connected.

- 1 Remove the sticker from the back of the scanner.

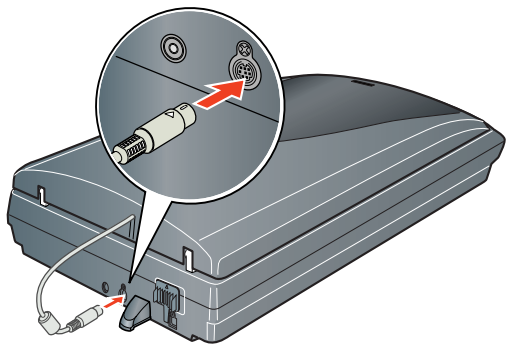


Remove sticker

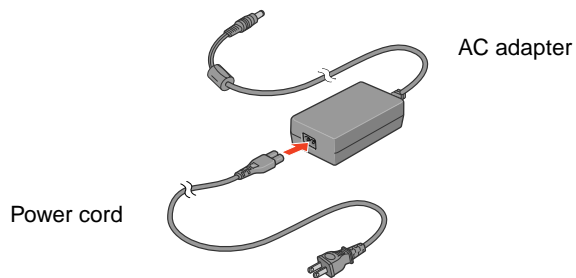
- 2 Locate the transportation lock on the back of the scanner and slide the lock to the left, as shown below.



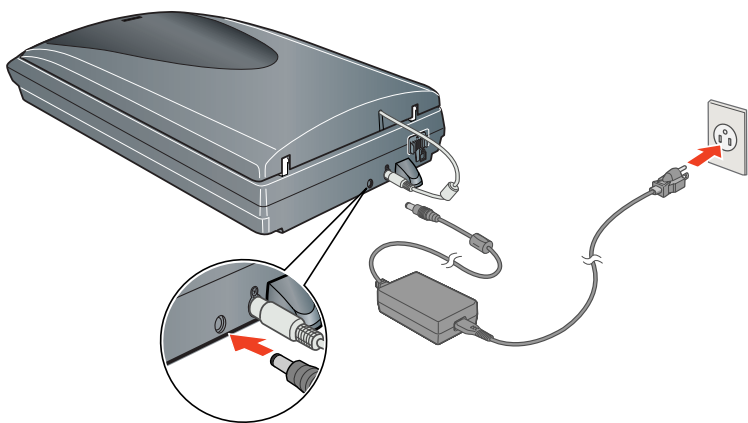
- 3 Connect the cable for the built-in film adapter.



- 4 Connect the power cord and AC adapter, as shown.



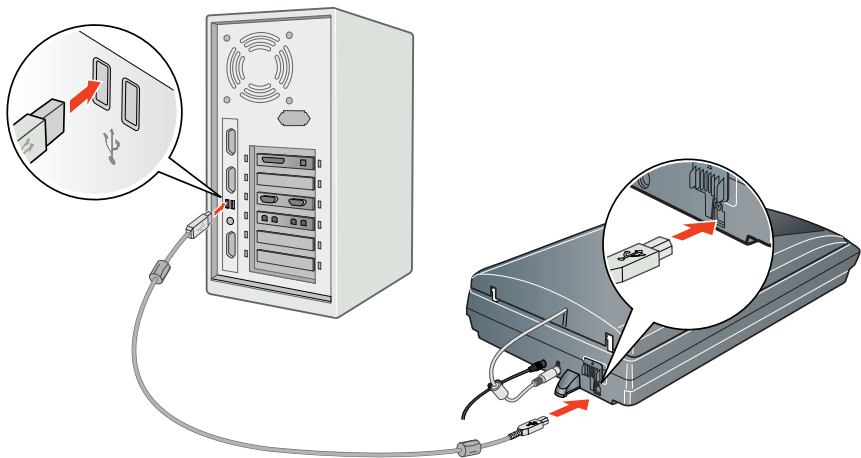
- 5 Connect the AC adapter to the scanner.



- 6 Plug the other end of the power cord into a grounded electrical outlet.

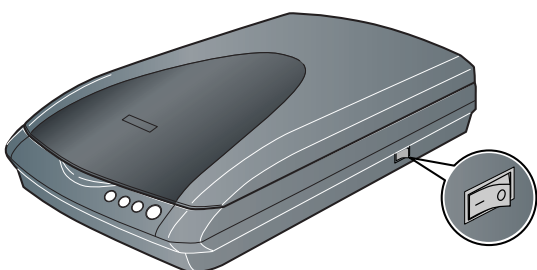
Caution: It is not possible to change the AC adapter's input or output voltage. If the label on the AC adapter does not show the correct voltage, contact your dealer. Do not plug in the power cord.

- 7 Use the USB cable that came with your scanner. Plug the square end of the USB cable into the scanner's USB port. Then plug the flat end into any available USB port on your computer or hub.



Note: Your scanner may not work correctly if you use a USB cable other than the one supplied by EPSON or if you connect your scanner through more than one hub.

- 8 Turn on the power switch on the side of the scanner.



The scanner turns on and the Start button flashes green. It stops flashing and stays green when the scanner is ready.

- 9 For Macintosh, restart your system to fully activate the scanner and software.

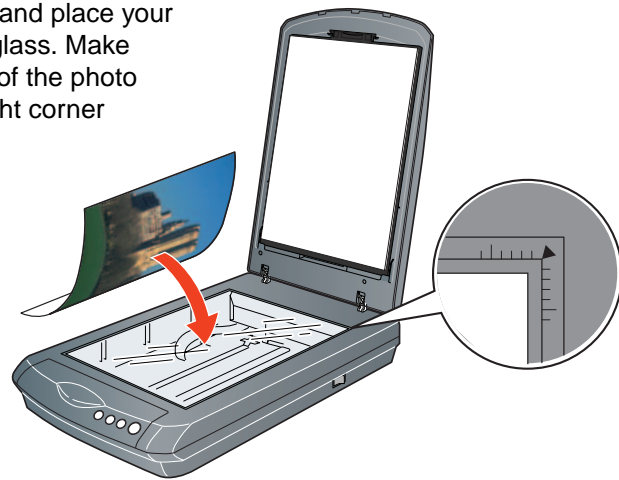
Scanner Basics

Your First Scan

The Start button on your scanner automatically opens the EPSON Smart Panel, making it easy for you to scan your images for many different uses. Here's how you can use the Start button and Smart Panel to scan photos and save them as files.

- 1 Raise the scanner cover and place your photo face down on the glass. Make sure the top right corner of the photo is aligned with the top right corner of the scanner.

Then close the cover.



- 2 Press the Start button on your scanner.



Note: In Windows XP, you will see a message the first time you press the Start button. Select **EPSON Smart Panel**, click **Always use this program for this action**, then click **OK**.

EPSON Smart Panel opens on your computer.



- 3 Click the **Scan and Save** icon.

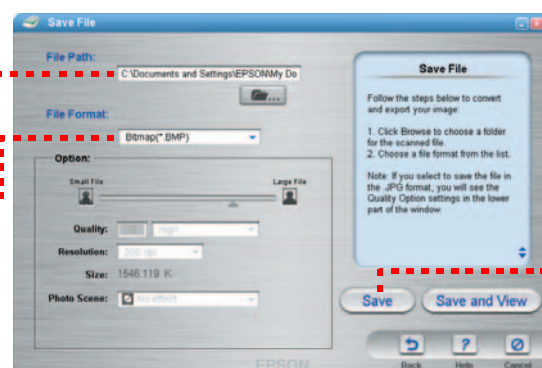
A progress meter appears on the screen and your photo is automatically scanned. After your photo is scanned, the View Image screen opens.

- 4 Click **Next** to continue.

- 5 When you see the following screen, select a location and file type for your scanned image, then click **Save**.

Specify the path to the folder where you want to save your scanned image

Select a file format



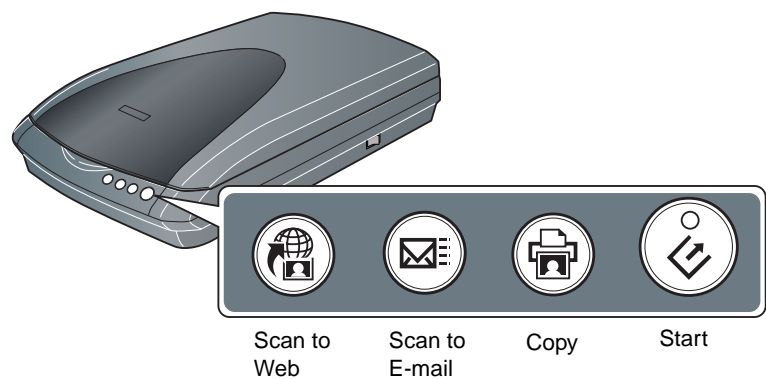
Click **Save**


Turn over ----->

Starting a Scan

You can start a scan in several different ways:

- You can use the scanner buttons. Press the button for the type of scan you want. Smart Panel automatically opens and scans your documents. Then follow the easy on-screen instructions to finish your task.
- Note:** If you are using Windows XP, you will have to select **EPSON Smart Panel** and **Always use this program for this action** the first time you press each of the buttons.



- You can start Smart Panel by clicking the  icon on your desktop, and use it to perform various types of scans.
- You can start EPSON Scan from Adobe Photoshop Elements or any other TWAIN-compliant program. You can also start the EPSON Scan program directly from your computer.

Selecting the Scanning Mode

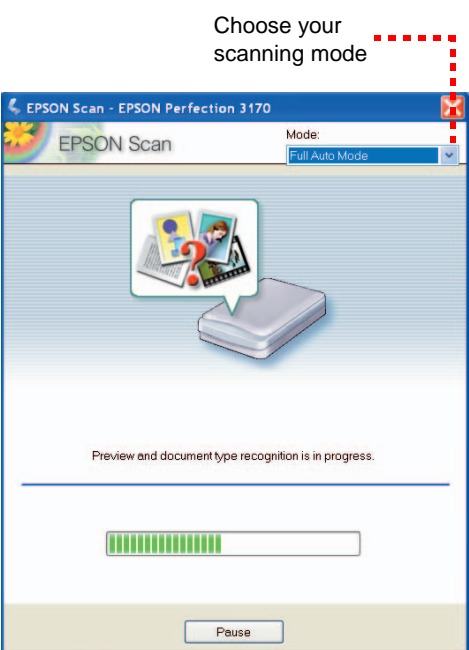
EPSON Scan has four scanning modes:

- Full Auto Mode** for automatic control of scan settings.
- Home Mode** for scanning film and more control over scan settings, including Color Restoration.
- Office Mode** for scanning text and multiple pages (available only if the optional automatic document feeder is installed).
- Professional Mode** for full control over all scan settings.

To change the scanning mode, choose the mode you want to use from the list box at the top right of the window.

To change settings in Full Auto Mode, click the **Pause** button, then click **Options**. If you're using Home, Professional, or Office Mode, the options window automatically appears. Then select the settings you want to use for your scan.

Note: The selected mode and settings remain in effect until they are changed.




Restoring Color in Photos

If you have faded photos or negatives, you can use the Color Restoration setting in your software to improve the color of your scan. You can select this setting in Smart Panel or in EPSON Scan.



Smart Panel

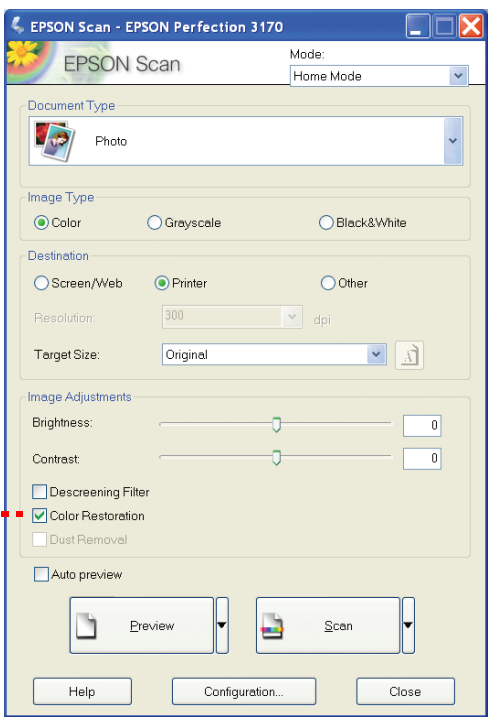
To select the Color Restoration setting, open Smart Panel and select  **RePrint Photo**. You see the screen below. Click the **Color Restoration** icon.



EPSON Scan

Color Restoration is available in Home and Professional Modes.

- To select Color Restoration, start EPSON Scan. You see a screen similar to this.
- Click the **Preview** button at the bottom of the screen.
- Select the **Color Restoration** checkbox. (If you're using Professional Mode, you may need to scroll to the bottom of the screen.)



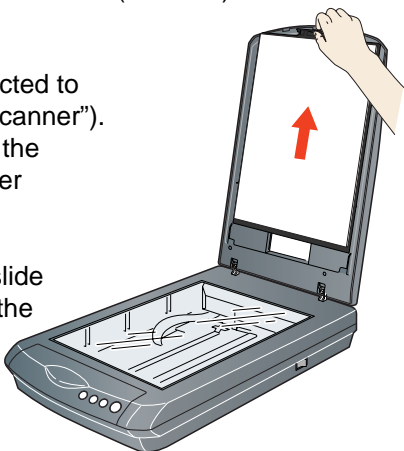
Scanning Film

The scanner cover has a built-in film adapter. To scan film or negative strips, slides, or transparencies, you need to remove the document mat from the scanner cover and insert the film in a holder.

The scanner comes with 3 different film holders: one for 35 mm film or negative strips, one for 35 mm slides, and one for medium-format (120/220) transparencies.

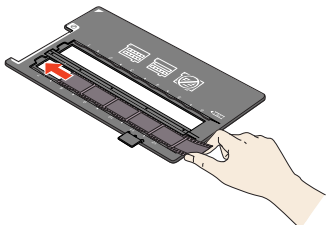
- Make sure the film adapter cable is connected to the scanner (see step 3 in "Connect the Scanner"). If you need to connect the cable, first turn the scanner off. Then turn it back on again after you connect the cable.

- Lift the scanner cover all the way up and slide the reflective document mat up and off of the scanner cover.

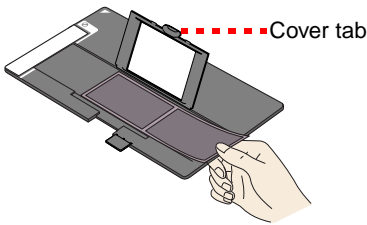


- Follow the instructions for the type of film you are scanning:

If you are scanning 35 mm film or negative strips or medium-format (120/220) transparencies, slide the film into the corresponding holder, with the film's shiny side facing down.

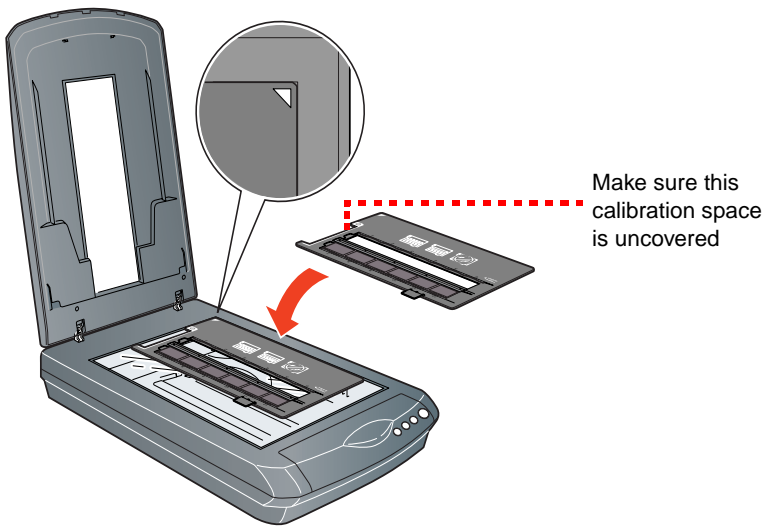


35 mm film or negative strips

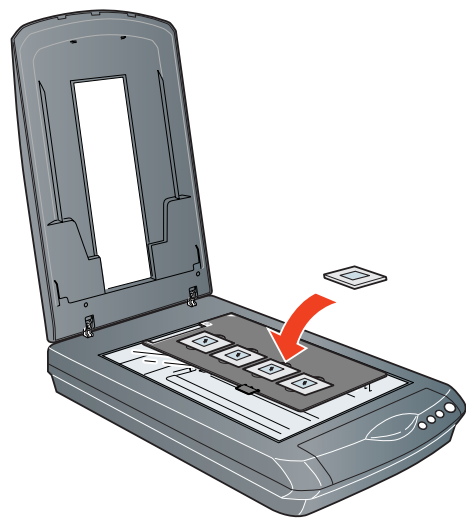


Medium-format transparencies: Slide the film into the holder as shown. Then lower the cover and press the tab to lock it in place.

Place the film holder on the scanner as shown. Make sure the white triangle on the holder points to the upper-right corner of the scanner.



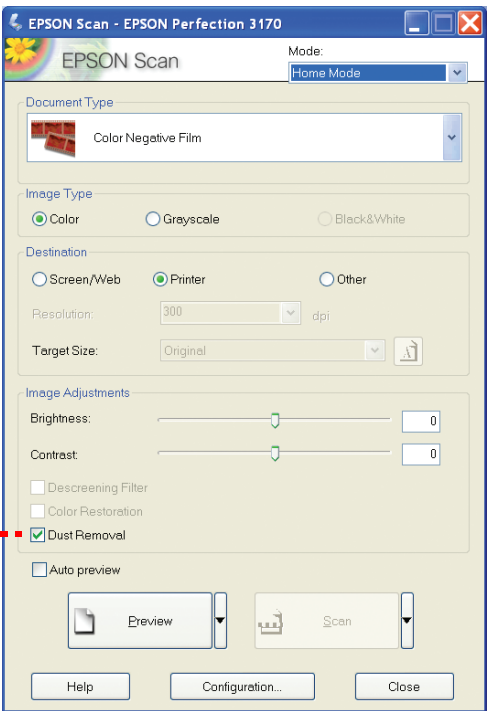
If you are scanning slides, place the holder on the scanner. Then place the slides in the holder.



- 4
- Close the scanner cover.
- 5
- Start EPSON Scan and make sure the correct Document Type is selected: either Color Negative Film, B&W Negative Film, or Positive Film (for slides and transparencies).

Tip: Make sure your film is dust-free for the best scan. You can also select the Dust Removal setting in EPSON Scan, as shown:

Select Dust Removal



Questions?

Here's where to look for answers:

On-Screen Reference Guide

Double-click the **Scanner Reference Guide** icon on your desktop. (If you didn't install the guide, insert the scanner software CD-ROM in the CD-ROM or DVD drive. Click the **Custom** button, select **Scanner Reference Guide**, then click **Install**.)

On-Screen Help for Smart Panel and EPSON Scan

Click the Help button or question mark that appears on the screen when you're using these programs.

EPSON Technical Support

- World Wide Web
<http://support.epson.com>
 - Automated Telephone Services
To use Automated Telephone Services, you must have a touch tone telephone and call (800) 922-8911. Your EPSON SoundAdvice™ Express Code is 70600. Use it to quickly select your scanner in SoundAdvice.
 - To Speak to a Customer Service Representative
Dial (562) 276-4382 (U.S.) or (905) 709-3839 (Canada), 6 AM to 6 PM, Pacific Time, Monday to Friday. Toll or long distance charges may apply.
- Before you call, please have the following information ready:
- Product name (EPSON Perfection 3170 Photo)
 - Serial number (located on the back of the scanner)
 - Proof of purchase (such as a store receipt) and date of purchase
 - Computer configuration
 - Description of the problem

Software Technical Support

Software	Telephone*	Fax	Internet and E-mail
EPSON Scan	U.S. (562) 276-4382 Canada (905) 709-3839 6 AM to 6 PM, Pacific Time, Monday to Friday		support.epson.com
EPSON Smart Panel Presto! BizCard	(510) 445-8616	(510) 445-8601	www.newsoftinc.com tech@newsoftinc.com
ABBYY FineReader Sprint	(510) 226-6719	(510) 226-6069	www.abbyyusa.com support@abbyyusa.com
Adobe Photoshop Elements	Windows (206) 675-6358 Macintosh (206) 675-6258 6 AM to 5 PM, Pacific Time, Monday to Friday		www.adobe.com/support

* Toll or long distance charges may apply.

Problems?

First, check the Start button light on the scanner.

	Flashing green	Warming up or scanning.
	Green	Ready to scan.
	Flashing red	Make sure the transportation lock is unlocked (see section 3). Try restarting your computer and turning the scanner off and then on again. If the red light is still flashing, contact your dealer or EPSON.
	Off	Make sure the scanner is connected to your computer and the power switch is turned on.

If your problem is listed here, try these suggestions.

The New Hardware Wizard appears on your screen.	Click Cancel and follow the steps in "Install the Software" on the other side of this sheet. Disconnect the scanner before installing the software.
You see a message about a HI-SPEED USB device in Windows XP.	Click the x in the corner of the message to close it. Your scanner will work correctly, although not at maximum speed.
You see an error message when you try to scan, or the scanner doesn't scan.	Make sure the scanner is connected to your computer, plugged into a power source, and the power switch is turned on. Make sure the transportation lock is unlocked (see section 3). Uninstall the following programs: ABBYY FineReader, EPSON Photo Print, EPSON Scan, EPSON Smart Panel, and ScanToWeb. In the Windows Control Panel, use the Add/Remove Programs utility to uninstall software. Then follow the instructions on the other side of this sheet to reinstall your scanner software.
You can't scan negatives or slides.	Make sure the film adapter cable is connected to the scanner (see section 3) and the reflective document mat is removed. Try using the Home or Professional Mode. Make sure the Document Type or Film Type matches what you're scanning: either Color Negative Film, B&W Negative Film, or Positive Film (for slides and transparencies). Also, make sure the scanner glass is clean and the film holder is positioned correctly.