



iB73

**Water-resistant Bluetooth wireless sport ear buds**  
User Manual



## Introduction

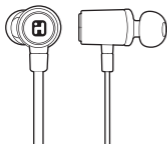
Your new iHome Bluetooth stereo ear buds are designed to link with your Bluetooth enabled smartphone or music player to allow you to wirelessly listen to music and answer phone calls within the normal 10 meter (33 feet) Bluetooth operating range. In addition your iHome Bluetooth ear buds are classified as IPX5 meaning that they are protected against “low pressure jets of water from all directions”, so you can safely use your ear buds in all kinds of weather conditions without fear of water damage.

*Note:* Do not use these ear buds while swimming. They are not designed to be submerged in water or any other liquids.

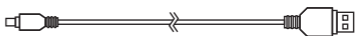
Your ear buds are supplied with 3 sizes of ear cushions, 3 sets of ‘fin’ type stabilizers, a set of over-ear hooks, and a cord management ‘clip’ to allow you to customize your ear buds for maximum wearing comfort and stability during all kinds of exercise and physical activities.

Please review this manual carefully to make sure you are getting the maximum benefit from all of the features of your new ear buds, and keep this manual for future reference.

### What's Included



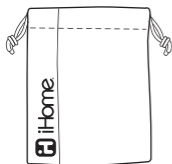
iB73 Stereo ear buds  
with control dongs



USB Charging Cable X 1



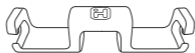
Silicon Ear Cushions



Drawstring Travel  
Pouch X 1



Stabilizer Fins



Cable Management  
Clip X 1



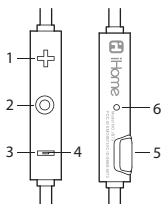
Over-Ear Hooks X 2

## Specifications

<b>Bluetooth specification</b>	Supports V4.0 and earlier versions with Handsfree Profile 1.6, Headset Profile 1.2, A2DP profile 1.2 (Class II), AVRCP and aptX
<b>Standby time</b>	430 hours (with fully charged battery)
<b>Talk time</b>	5.5 hours (with fully charged battery)
<b>Music Playing Time</b>	5.5 hours (with fully charged battery)
<b>Charging Time</b>	About 2 hours
<b>Operating Distance</b>	up to 10 meters / 33 feet
<b>Frequency Response</b>	180Hz – 20kHz
<b>Receiver Output</b>	10mW
<b>Signal to Noise Ratio</b>	>90dB
<b>Distortion</b>	<1.0%
<b>Weight</b>	15.5 grams
<b>Certifications</b>	CE, FCC, RoHS, BQB, IPX5

## PREPARATION FOR USE

### 1. Controls and Indicators

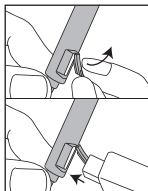


1	+ Button (Volume Up and Skip Forward)
2	Multi-Function Control Button (MFB)
3	- Button (Volume Down and Skip Back)
4	LED Indicator (Power On, Pairing, Charging Indication)
5	Micro USB Charging Port (Under Water-Resistant Cover)
6	Microphone

### 2. Charging Your Ear Buds

**IMPORTANT:** Your iHome ear buds operate on a built-in rechargeable lithium-ion battery. Although the battery was fully charged when it left our factory, like all batteries it can experience some power drain during periods of non-use. For best results we recommend that you charge the battery for approximately 3 hours before using your ear buds for the first time.

1. Lift up the water resistant cover to expose the micro USB charging port.
2. Connect the micro USB plug on the charging cable to the micro USB port on the headphone. NOTE: The micro USB plug can only be inserted into the micro USB charging port one way. To avoid damaging the connection make sure the plug is properly aligned with the charging port.



3. Connect the standard USB plug on the charging cable to any standard USB power port such as found on a notebook computer, or the charging adapter for an iPod, iPhone, etc.
4. The Power/Charging/Pairing indicator will glow RED while the ear buds are charging. The indicator will turn BLUE when the battery is fully charged, indicating that your ear buds are ready for use.

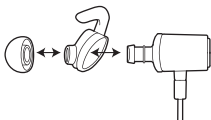
### 3. Wearing Your Ear Buds

Your iHome ear buds are supplied with 3 sizes of ear cushions and 3 sizes of flexible stabilizer 'fins'. The M size cushions and M size fins were installed on the ear buds in our factory. The ear buds are clearly marked with 'L' and 'R' indications. Place the 'L' ear bud in your left ear and the 'R' ear buds in your right ear as shown in the following illustration:



When worn properly the control dongle will be on your right side. Some users prefer to wear the ear buds with the cable behind their neck. Others may prefer to have the cable in front of their neck. Either wearing style is acceptable.

If you find that the 'M' size cushions and fins are either too large or too small for your ears you can easily replace them with the 'S' or 'L' cushions and fins. To change to a different size cushions and fins, first simply pull the cushion off the tube and then pull the fin assembly off the ear bud housing as shown.

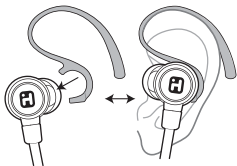


Then place the desired size of fin assembly over the ear buds housing and place the desired size cushion firmly over the tube as shown.

**IMPORTANT:** Make sure that the cushion is firmly seated on the tube so that the cushion does not remain in your ear canal when you remove the ear buds.

It is not necessary to use the same size cushions and fins. You may find for example that using the 'M' size cushions with the 'S' size fins is most comfortable for you. That is a matter of personal choice.

We have also provided one set of ear hooks that are designed to keep the ear buds in place during more strenuous exercise and activities. The hooks may be used either together with the stabilizer fins or in place of the stabilizer fins. Refer to the following illustration for proper attachment and wearing of the hooks. The hooks are marked 'L' and 'R' and can only be installed one way.



If you find that the ear buds cable is too long and moves too much while running or jogging, you may use the included cable management clip to shorten the cable.



Refer to the illustration.

## OPERATING INSTRUCTIONS

### 1. Switching Your Ear Buds On and Off

NOTE: The first time you perform this operation you might find it convenient to place only the left ear bud in your left ear. This will allow you to hold the control dongle in your right hand so that you can see the control buttons and the LED indicator and still hear the voice prompts in your left ear. Once the ear buds have turned on and paired with your Bluetooth device you can then place the right ear bud in your right ear.

### 2. Power On

PRESS and HOLD the Multi-Function Button (MFB) on the control dongle for 3 seconds until you hear the voice say "Power ON". The red LED flashes once and then the blue LED begins flashing two times per second indicating that your ear buds are in the Auto-Linking Mode and trying to re-link to a previously paired device as long as that device is within the normal pairing range of approximately 33-feet. If your ear buds do not find a previously paired device that is in range and turned 'on' within approximately 45 seconds they will switch from the Auto-Linking mode to the Pairing mode. You will hear the voice say "Pairing" and the LED indicator begins alternately flashing red and blue.

### 3. Power Off

PRESS and HOLD the Multi-Function Button (MFB) on the control dongle for 3 seconds. You will hear the voice say "Power Off". The red LED flashes once and then shuts off.

### 4. Manually Pairing Your iHome Ear Buds With Your Bluetooth Device

NOTE: Your ear buds must be 'Off' to begin the manual pairing process.

With the ear buds in the 'Off' mode, PRESS and HOLD the Multi-Function Button (MFB) on the control dongle for approximately 6 seconds. After 3 seconds you will hear the "Power ON" prompt and after another 3 seconds you will hear the "Pairing" prompt and the LED indicator begins alternately flashing red and blue. Release the Multi-Function Button (MFB)

Make sure that your Bluetooth device is turned 'On' and "discoverable". Refer to the instructions supplied with your device if necessary. When your device "finds" the iB73 ear buds, you will see "iHome iB73" appear on your device's Bluetooth menu screen together with the words "Not Paired", "Not Connected" or similar. Touch "iHome iB73" to complete the pairing process. You will hear the voice prompt say "Your device is connected", and you will see "iHome iB73 Connected" on your device's Bluetooth menu. NOTE: If your Bluetooth device asks for a Password or a PIN to complete the pairing process, enter "0000" on the keypad of your device.

You are now ready to begin streaming music wirelessly from your Bluetooth device to your iHome iB73 Bluetooth ear buds.

### 5. Using Your iHome Bluetooth Ear Buds

The chart on Page 4 explains the basic functions and operations of your Bluetooth ear buds.

Function	Action Required
Turn Ear Buds 'On'	When Ear Buds are 'Off' Press and Hold the MFB for 3 seconds until you hear the "Power On" voice prompt.
Enter the Pairing Mode	When Ear Buds are 'Off' Press and Hold the MFB for 6 seconds until you hear the "Pairing" voice prompt. The LED indicator alternately flashes red and blue.
Pairing	Make sure your Bluetooth device is 'On' and in the Pairing Mode. When iHome iB73 appears on your devices menu, select it to complete pairing.
Play / Pause	Short press the MFB to start playback. Short press to pause playback. Short press to resume playback.
Skip to next track	Short press the "+" button during playback
Skip to beginning of current track	Short press the "-" button during playback
Skip to beginning of previous track	Short press the "-" button twice during playback
Increase volume	Press and hold the "+" button during playback
Decrease volume	Press and hold the "-" button during playback
Answer an incoming phone call	Short press the MFB when you hear the incoming ring sound. NOTE: Music will automatically pause when you are answering a call and resume when you end the call.
Decline an incoming phone call	Press and hold the MFB for 1 - 2 seconds to decline the incoming call.
End a call	Short press the MFB to end the call and 'hang up'.
Transfer a call between the phone and the ear buds	While the call is in progress double press the MFB to transfer the call between the phone and the ear buds.
Last number redial	When phone is paired with ear buds but no call is in progress double press the MFB to redial the last number.
Turn Ear Buds Off	Press and hold the MFB for 3 seconds until your hear the "Power Off" prompt and LED indicator shuts off
Clear the paired device list (Factory Reset)	Press and hold the "+" button for 6 seconds in pairing mode. If successful, a red light will glow for 2 seconds. All previously paired devices will be disconnected.

## 6. Voice Prompts

Your iHome iB73 ear buds include spoken voice confirmations for the following features and functions:

- Power On
- Power Off
- Pairing
- Your Device is Connected
- Last Number Redial
- Maximum Volume
- Minimum Volume
- Voice Dial
- Battery Low

## FCC Information

FCC ID:EMOIB73  
IC:986B-IB73  
Declaration ID D023990

This equipment complies with FCC radiation exposure limits set forth for an uncontrolled environment.

This device complies with Industry Canada licence-exempt RSS standard(s). Operation is subject to the following two conditions:

- (1) this device may not cause interference, and
- (2) this device must accept any interference, including interference that may cause undesired operation of the device.

This device complies with Part 15 of the FCC Rules, operation is subject to the following two conditions:  
(1) This device may not cause harmful interference, and (2) this device must accept any interference received, including interference that may cause undesired operation.

- **Warning:** Changes or modifications to this unit not expressly approved by the party responsible for compliance could void the user's authority to operate the equipment.
- **NOTE:** This equipment has been tested and found to comply with the limits for a Class B digital device, pursuant to Part 15 of the FCC Rules.

These limits are designed to provide reasonable protection against harmful interference in a residential installation. This equipment generates, uses and can radiate radio frequency energy and, if not installed and used in accordance with the instructions, may cause harmful interference to radio communications.

However, there is no guarantee that interference will not occur in a particular installation. If this equipment does cause harmful interference to radio or television reception, which can be determined by turning the equipment off and on, the user is encouraged to try to correct the interference by one or more of the following measures:

- Reorient or relocate the receiving antenna.
- Increase the separation between the equipment and receiver.
- Connect the equipment into an outlet on a circuit different from that to which the receiver is connected.
- Consult the dealer or an experienced radio/TV technician for help.

CAN ICES-3 (B)/NMB-3(B)

## Limited One-Year Warranty Information

---

iHome Products, a division of SDI Technologies Inc. (hereafter referred to as SDI), warrants this product to be free from defects in workmanship and materials, under normal use and conditions, for a period of one (1) year from the date of original purchase.

Should this product fail to function in a satisfactory manner, it is best to first return it to the store where it was originally purchased. Should this fail to resolve the matter and service still be required by reason of any defect or malfunction during the warranty period, SDI will repair or, at its discretion, replace this product without charge. This decision is subject to verification of the defect or malfunction upon delivery of this product to the Factory Service Center authorized by Customer Service.

If service is required, please call Customer Service at 1-800-288-2792 to obtain a Return Authorization Number and shipping instructions.

### Disclaimer of Warranty

NOTE: This warranty is valid only if the product is used for the purpose for which it was designed. It does not cover (i) products which have been damaged by negligence or willful actions, misuse or accident, or which have been modified or repaired by unauthorized persons; (ii) cracked or broken cabinets, or units damaged by excessive heat; (iii) damage to digital media players, CD's or tape cassettes (if applicable); (iv) the cost of shipping this product to the Factory Service Center and its return to the owner.

This warranty is valid only in the United States of America and does not extend to owners of the product other than to the original purchaser. In no event will SDI or any of its affiliates, contractors, resellers, their officers, directors, shareholders, members or agents be liable to you or any third party for any consequential or incidental damages, any lost profits, actual, exemplary or punitive damages. (Some states do not allow limitations on implied warranties or exclusion of consequential damages, so these restrictions may not apply to you.) This warranty gives you specific legal rights, and you may also have other rights which vary from state to state.

Your acknowledgement and agreement to fully and completely abide by the above mentioned disclaimer of warranty is contractually binding to you upon your transfer of currency (money order, cashier's check, or credit card) for purchase of your SDI product.

**© 2015 SDI Technologies, Inc. All rights reserved.**

**Questions? Visit [www.ihome.com](http://www.ihome.com)  
or call 1-800-288-2792 Toll Free**