

English Language User Manual

ARCHOS™

Pocket Media Assistant PMA430™

Video Player & Recorder / Music & Audio / Wifi / Linux® / Personal Information Manager (PIM)



FR: Manuel d'utilisation complet (Français) sur le disque dur du PMA430.

ES: Manual completo (Español) en el disco duro del PMA430.

DE: Das komplette Handbuch (Deutsch) steht auf der Festplatte des PMA430 zur Verfügung.

IT: Manuale completo (Italiano) sul disco rigido di PMA430.

Please visit our website to download the most recent manual and software for this product.

version 2.0

Dear Customer,

ARCHOS thanks you for your choice of this exciting PMA430™ Personal Media Assistant. Based on the tried and tested Linux® operating system, you can now get all the entertainment you want, right in the palm of your hand. This guide will explain to you the functions of the PMA430™. This product is, in reality, a computer. Our engineers have packed this product with many functions and capabilities*. The better you know how to use it, the more enjoyment you will get from it. Remember, with the PMA430™, you can...

- Record video from your television, VCR, or any video source
- Play MPEG-4 movies
- Listen to and record digital music files
- Download images from a digital camera
- View photo images
- Play regular games as well as Mophun® based games
- Use it as an Internet browser or E-mail device
- Use it as a Personal Information Manager (calendar, appointments, address book, etc.)
- Add third party software for a variety of tasks
- Store any type of data file, it's a portable hard drive too!

We wish you many years of enjoyment from your PMA430™ product. Don't forget to check our web site (www.archos.com category software), as we periodically update the ARCHOS PMA430™ internal software to offer new functions and improved features.

The ARCHOS TEAM

**As our engineers are always updating and improving the software, your device's software may have a slightly different appearance or modified functionality than presented in this manual.*

TABLE OF CONTENTS

The complete manual in different languages is available on the hard drive of your PMA430 under /Archos/Manuals.

1 Overview	8
1.1 Ports, Buttons, and Connectors	8
1.2 Overview of different screen areas	10
1.3 Application tabs	10
1.4 The Touch Screen and Text Input	11
1.5 Linux®, Qtopia™ and the PMA430 File System	12
1.6 Updating the Operating System	13
Step 1 Download the file aimage.img	13
ATTENTION Macintosh® Users	14
Step 2. Read the History.txt File	14
Step 3. Copy the aimage.img file to the PMA430 System Folder	14
Step 4 Reset the PMA430 and set the time and date	14
1.7 Changing the Language	15
1.8 Caring for the PMA430	15
1.9 Hardware Reset	15
2 Connecting/Disconnecting the PMA430 to/from your PC	16
2.1 Connecting the PMA430	16
2.2 Disconnecting the PMA430 from your Computer	17
Windows®	17
Macintosh®	18
3 System Recovery	19
4 Music Application	21
4.1 Playing Music	21
Button controls while a song is playing	23
4.2 The ARCLibrary™ - Browsing by Artist, Album, or Title	24
4.3 Putting Music onto your PMA430	24
Synchronizing Music from Windows Media® Player (WMP) to the PMA430	25
Synchronizing Music from Windows Media® Player (WMP) 9 to the PMA430	25
Synchronizing Music from Windows Media® Player (WMP) 10 to the PMA430	25
Transferring your CD collection to the PMA430	25
Installing Windows Media® Player (WMP) 9	26
Installing Windows Media® Player (WMP) 10	26
4.4 Play Music through your Home Stereo	26
4.5 The Resume Functions	26
4.6 Customizing the Equalizer	27
5 AudioCorder Application	28
6 MUSIC - Using iTunes™ with your PMA430	29
7 Photo Application	30
7.1 Transferring pictures to your PMA430	31
8 Video Application	32
8.1 The Resume Functions	33
8.2 Display Format Settings	33

Display	33
Video	33
8.3 Playing Video Files from the Internet	33
9 VideoCorder Application	35
Manual Recording	35
Fixed Time Recording	36
Scheduled Recordings	36
9.1 Setting other Recording Parameters	37
9.2 Copy Protection	37
10 Set-up for scheduled video recordings	39
10.1 Part 1 : Choose your Category, Brand, and Model	39
10.2 Part 2: Testing the channel changer	40
10.3 Part 3: Give your channels a name	40
11 File browser Application	42
12 Creating MPEG4 Video Files with your Computer	44
How to create an MPEG4 video file	44
PC Tools	44
12.1 Installing the PC Software	44
Virtual Dub™	45
MPG4 Translator	45
MP3 Sound Codec	45
12.2 Using MPEG4 Translator	47
Select Source & Destination Files	47
Change Settings	47
Target & Priority	48
Start	48
13 Personal Information Management (PIM) Applications	50
13.1 Today	50
13.2 Calendar	50
13.3 Contacts	50
13.4 Todo List	50
14 Miscellaneous Applications	51
14.1 Clock	51
14.2 World Time	51
14.3 Calculator	51
14.4 Text Editor	51
14.5 System Info	52
14.6 Help Browser	52
14.7 Mophun®	52
14.8 Terminal	52
14.9 Pdf Viewer	52
15 Internet Applications	53
15.1 E-Mail	53
15.2 Opera™ Browser	53
16 Audio-Visual Settings	55
16.1 TV Output	55
16.2 VideoCorder Settings	55
16.3 Equalizer	55

17 Hardware Settings	56
17.1 LCD Settings	56
17.2 Light & Power	56
17.3 Recalibrate	56
17.4 Network	56
<i>Start the Network Application</i>	56
<i>Choose your service</i>	56
<i>Choose the IP Configuration Type</i>	57
<i>Scan for active Access Points</i>	57
<i>Choose the Access Point</i>	58
<i>Service Created</i>	58
<i>Browsing the Web or Using E-mail</i>	59
<i>Making an Infrared connection</i>	59
<i>Account Tab</i>	60
<i>Modem tab</i>	60
<i>Network tab</i>	61
18 Software & Other settings.....	62
18.1 Language	62
18.2 Security	62
18.3 Appearance	62
18.4 Launcher	62
18.5 Date/Time	62
18.6 Software Packages	63
18.7 Restart	63
18.8 Application Services	63
18.9 Plug-in Manager	63
19 Installing & Using Qtopia™ Desktop.....	65
19.1 Installation	65
19.2 Usage	65
19.3 Synchronizing with Microsoft® Outlook	66
20 Technical Support.....	67
21 Troubleshooting	69
21.1 USB Device Connection issues.....	69
21.2 Charging and Power issues	69
21.3 PMA430 locks up (freezes operation) or Stops	70
21.4 File issues, corrupted data, formatting, and partitioning	70
<i>Windows® ME Running Scan-Disk (Error Checking)</i>	71
<i>Windows® XP & 2000 Running Check Disk Utility (ChkDsk)</i>	71
22 Legal	73
22.1 Warranty and Limited Liability	73
22.2 Warnings and Safety Instructions	73
22.3 FCC Compliance Statement	74
22.4 Electrostatic Discharge.....	74
22.5 Avoiding Hearing Damage	74
22.6 Copyright Notice	74
22.7 LCD Pixel Policy	74
23 Index	76

!!Backup the .zip folder!!!

You will find a file **PMA400_Recovery.zip** on the PMA430 hard drive in the folder **/Archos/PMA400_Recovery_zip**. Please back this up onto your PC just in case you need to do a complete system recovery in order to return your PMA430 to its original factory delivered state.

Sections of this documentation which will help you to backup this folder are

- Connecting/Disconnecting the PMA430 to/from your computer
- System recovery

PART I

Introduction to the PMA430

1 Overview

1.1 Ports, Buttons, and Connectors



Lights

- a Hard drive activity indicator
- b On indicator
- c* Adapter/Charger Connected

Navigation pad

- d Move UP (Increase volume when playing music or video)
- e Move DOWN (Decrease volume when playing music or video)
- f Move LEFT (Move to left window in dual browser)
- g Move RIGHT (Open or move to right window in dual browser)
- h On/Enter/Play – Hold for 3 seconds to turn on
- i Escape/Stop/Standby – Hold for 3 seconds to put into standby mode

Additional buttons

- j ARCHOS button - Switch between open applications
- k Menu button –Open application tab option menus
- l Home button – Return to main screen. Switch between the tabs.
- m Hold 3 seconds to switch between internal and external display. A single short click will be interpreted as a tab key in applications that use tabbing.
- n TFT LCD Touch screen 320 x 240 pixels. Press lightly with the included stylus.
- o built-in loud speaker

*When the PMA430 is charging, this light will start to blink when the battery is 90% charged. To charge the battery to its full capacity, leave it plugged into the charger for at least one more hour.

- a Infrared communications port
- b Microphone
- c Headphone & AV in/out Multi-connect jack – connect headphones, TV cradle, or optional adapter*.
- d Power connector – use only the provided ARCHOS AC adapter/charger.
- e USB 1.1 Host port – To attach compatible USB devices to PMA430
- f USB 2.0 Device port (USB 1.1 compatible) – use to see the PMA430 as hard drive on your computer



*The optional multi-connect adapter and AV cable allow for audio and video playing (AV Cable) and recording (Adapter + Cable) without the TV Cradle from video and audio devices with video out and line out.

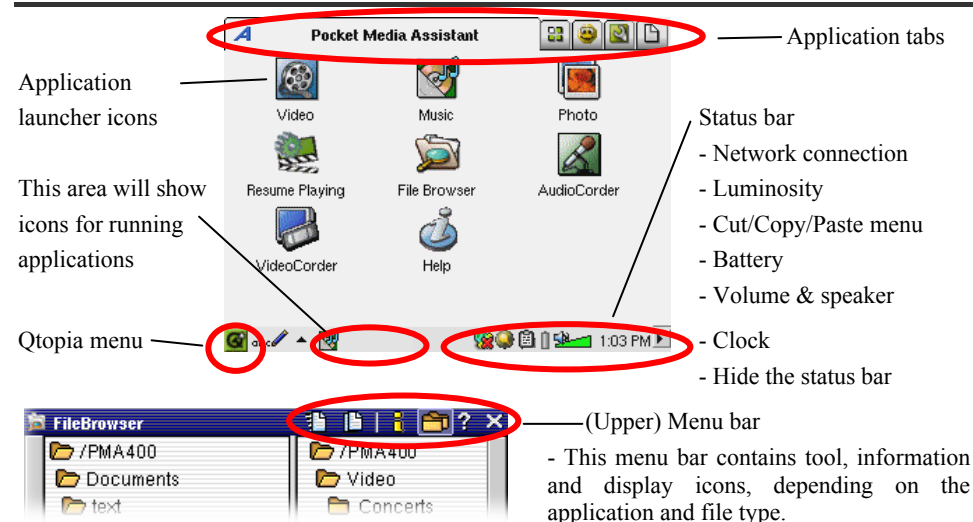


Multi-connect Adapter



AV Cable

1.2 Overview of different screen areas




1.3 Application tabs



ARCHOS Productivity Games Settings Documents

Qtopia™ menu

The PMA430's interface is partitioned into five main application sets, or tabs. You can change from one tab to another by clicking on the tab itself with the stylus (the PMA430's screen is touch sensitive), clicking the Home button , or by selecting it from the Qtopia™ menu, on the bottom left of the screen (see image on the right hand side).

Pocket AV Tab

From this tab, you can launch the music playing and recording applications, the video playing and recording applications, the photo viewing application, the file management application, and a resume playing application.

Productivity Applications Tab

From this tab, you can launch applications such as E-mail, an Internet browser, a calendar, agenda, contacts, and others.

Games

A number of games have been included with your device. Further, there is a Mophun® game engine found in the games tab. This is a special game playing platform. You can check the ARCHOS website for a list of available games to purchase.

Settings

This tab gives you access to the parameters which control the operation of your PMA430. They include the clock and calendar, the interface language, a security password, and your network parameters which allow you for example to use the built-in Wifi capabilities to connect to a network and access the Internet.

Documents

This tab corresponds to the **Documents** folder which is the top level of the file hierarchy system and where you will keep all your working documents. It displays all of your files that are located in the **Documents** folder and its subfolders. On the bottom left, you can choose to show “All Documents” (that is, all files) or select a certain file type (for example images or text files only). Please note that keeping a large amount of files in this folder can slow down the PMA430 or result in messages such as “Memory Low” or “Memory Critical”, so you might want to consider creating a folder (e.g. named “Data”) in the root directory of the PMA 430 to store the files you do not access frequently.

1.4 The Touch Screen and Text Input

The PMA430 is equipped with a tactile screen. You can lightly press on it with your finger or use the included stylus in order to launch an application or to interact with a program. There are three methods to enter text or numbers into your PMA430 when an application calls for textual information. If you need to enter text, click on the text entry button (1) and then choose your text entry method (2).



(1) (2)

Method: Handwriting Recognition

You write your characters on the screen itself. You have to write your letters in a particular way in order for the PMA430 to identify them correctly. The training tutorial (circled question mark on

the right of the input screen) will demonstrate to you how this is to be done, and will give you the opportunity to train yourself.

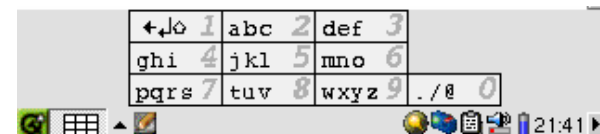
Method: Keyboard

A standard keyboard is displayed and you simply tap on the keys.



Method: Telephone

Enter text as if you are using a telephone number pad. Click once for the first letter, twice for the second letter and so on.



1.5 Linux®, Qtopia™ and the PMA430 File System



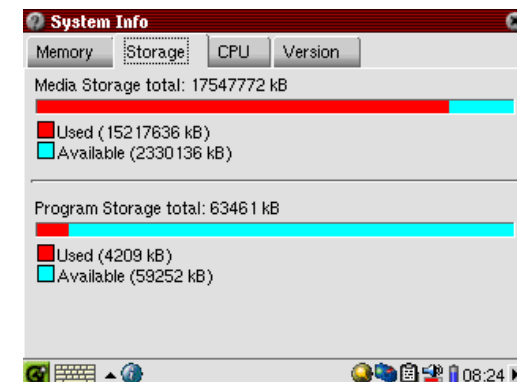
System Info

Your PMA430 runs on the Linux® operating system. This version of Linux® however does not include all of the libraries needed to run, on say, a desktop computer. It is a lean version.

Qtopia™ is the graphic layer on Linux® that allows for a comfortable graphic user interface instead of the traditional Linux® command line input.

The hard drive of your PMA430 is partitioned as FAT32, a file system used also on Windows® based computers. A small part of it is set aside as a storage space for additional applications. These two spaces are called Media Storage and

Program Storage respectively. The Media Storage, is where all of your music, videos, photos, and any miscellaneous data files will be stored. When you connect your PMA430 to your computer via the USB cable, it will appear as an external hard drive. Thus, you can very easily move files between your PC and your PMA430 by opening the PMA430 in Windows® Explorer and dragging and dropping files.



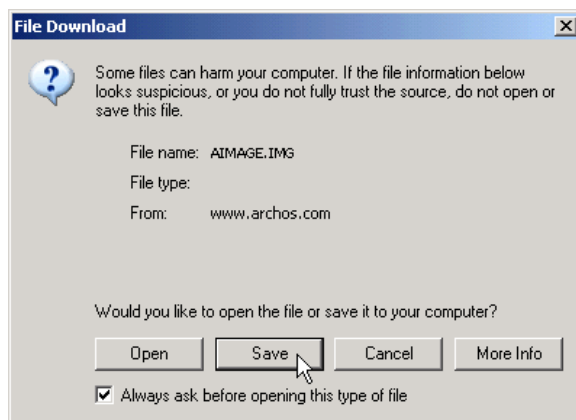
The Program storage area (64MB fixed size) is where new Linux® programs that you install onto your PMA430. Because Linux® applications need to run in a Linux® formatted space, the installation packages (file type .ipk) must be installed into the Program Storage area. You will notice that when your device is mounted onto a PC as an external hard drive (or mass storage device), there is a 64MB file in the **System** folder called **progfs.img**. This stands for program file space and is actually a simulated Linux® partition for your application programs. You should therefore not delete this file/partition. In case that you need to do an entire system recovery procedure, you should backup the **progfs.img** file to save all of your installed programs. After completing the recovery procedure, you can then recover your programs by replacing this file.

1.6 Updating the Operating System

ARCHOS periodically updates the Operating System (OS) and makes available a free download on the ARCHOS website (www.archos.com). Updates to the Operating System include new features, feature improvements, and bug fixes. You should check to make sure that you are running the most recent version of the OS. You can find information on the current version you are running under **Applications > System Info > Version**. The most recent version available can be downloaded at **www.archos.com** under the heading **Download > Software**.

Step 1 Download the file aimage.img

Download the image file **AIMAGE.IMG**, which will probably be quite large – approximately 22 MB. (Note that over a telephone modem, downloading a file of this size will take **at least** an hour and a half and possibly several hours.) When you click on the link to download the new OS file, your browser may warn you that the contents of the download may harm your computer. This is because the Windows® system does not know what an .IMG file is. Be assured that ARCHOS has made every effort to ensure that the file does not contain viruses. Click on the **Save** button to download this file to a convenient place, such as **My Documents**, in order to later copy this file to your PMA430. If your PMA430 is connected to your PC, you can even save it directly to the **System** folder in your PMA430.



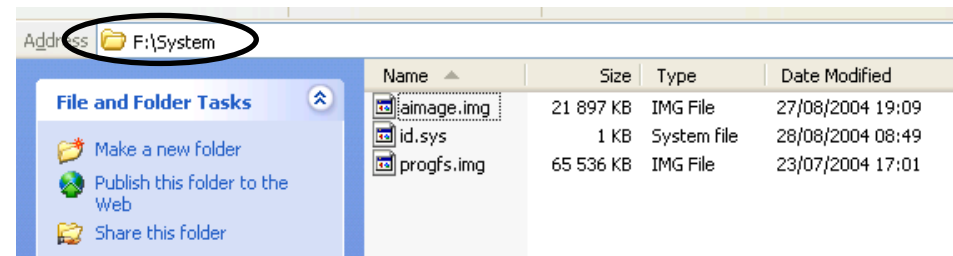
ATTENTION Macintosh® Users

Macintosh® users should be especially careful when they download and save this file to their Macintosh® computer. Do not double-click on it. Macs use .img files for a different purpose and if you double click on this saved .img, it will try to open it. Instead, simply copy it from your Macintosh to your PMA430's System folder. Just drag and drop.

Step 2. Read the History.txt File

On the ARCHOS website, you will also find next to the OS download, a text file which details the list of changes from the previous version of the OS.

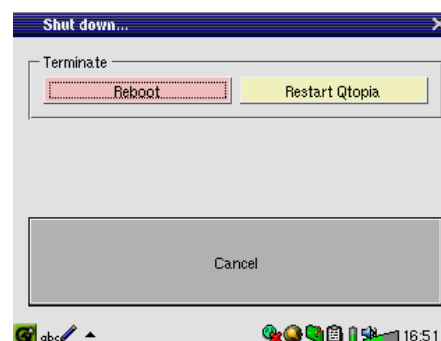
Step 3. Copy the aimage.img file to the PMA430 System Folder



Connect your PMA430 to your computer and then copy the AIMAGE.IMG file to the System folder of the PMA430. Since there will be an older version of this file on your PMA430 already, your computer will ask if you want to overwrite the current file. Click on Yes. Once this file is copied, safely disconnect the PMA430 from the computer.

Attention: The **aimage.img** must always remain in the System folder of the PMA430. Even once you have updated your PMA430, you must not remove that file.

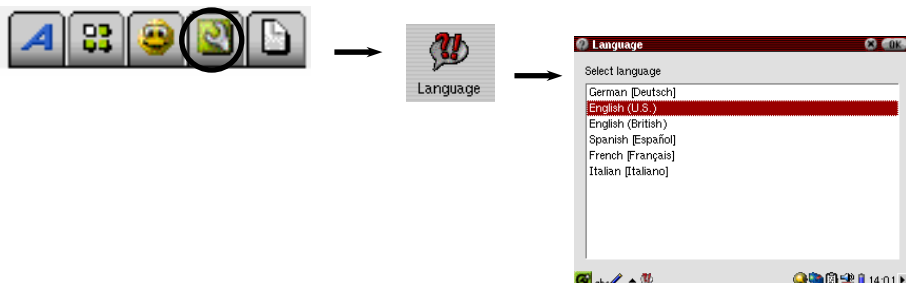
Step 4 Reset the PMA430 and set the time and date



In order for the new software update to take effect, you need to reset the PMA430. Disconnect it from the computer and go to **Settings > Shutdown**. Press the red “Reboot” button. The PMA430 will turn off. Turn it back on now and it will boot up the new operating system. You should check to verify that the clock time and date are correct after a reset.

1.7 Changing the Language

The PMA430 interface can be set to English (default), French, German, Italian, or Spanish. To change the language, go to **Settings** then **Language** and select your desired language. Click OK and wait a few moments. Your PMA430 will now use the new language.



1.8 Caring for the PMA430

The ARCHOS Video PMA430 is an electronic product that needs to be treated with great care.

- Do not subject it to shock.
- Do not subject it to heat. Keep it ventilated (especially when connected to a computer).
- Keep the PMA430 away from water and excessively humid areas.
- Keep the PMA430 away from high electromagnetic fields.
- Keep any connected cords to the PMA430 neatly arranged. This light product could fall if a cable is accidentally pulled.
- Do not open up the PMA430. There are no user serviceable parts inside. Opening will void your warranty.

1.9 Hardware Reset



In the event that your PMA430 freezes operation (due to electrostatic phenomena for example), you can actuate a hardware (cold) reset by placing a narrow object such as a paper clip into the reset hole and pressing on the recessed reset button.

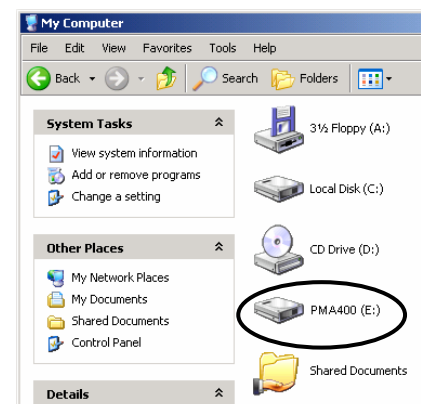
2 Connecting/Disconnecting the PMA430 to/from your PC

Note that when the PMA430 is connected to a computer, it will consume more energy, that is to say, the battery will discharge faster than usual. If the PMA430 loses power while connected to your computer you could damage your directory structure and/or loose data. Thus, you should **always use the AC adapter** when connected to your computer. Be also careful to understand the disconnection procedure since disconnecting incorrectly can lead to data loss or cause the computer/PMA430 to freeze. The PMA430 is not compatible with Windows® NT, Windows® 95, or Windows® 98. While connected as a hard disk to your computer, the PMA430 buttons are blocked and are no longer functional.

2.1 Connecting the PMA430

- 1) Use the power adapter to prevent the PMA430 from shutting off due to low power. (This could cause damage to the contents of the hard disk if not done.)
- 2) Plug the USB cable into your running computer.
- 3) Turn on the PMA430 – wait until it completely boots up.
- 4) Plug the other end of cable into your now running PMA430.

Windows® ME, 2000, XP (Home/professional)



When connected, the PMA430 will be recognized as a Mass Storage Class (MSC) Device and display automatically within a few seconds of being connected. You will see a new drive letter, such as E: in *My Computer* called **PMA400**. You can now use the hard disk called **PMA400** like any other hard disk. Simply access it using Windows® Explorer to drag and drop files to and from the PMA430's hard drive. If it is not automatically recognized, please refer to the troubleshooting section at the back of this manual.

Macintosh™ OS X (10.2 Jaguar and 10.3 Panther)



If you have OS 10.2, you must update to version 10.2.4 or higher. This is a free update from Apple® Computer. You will not need any special installation of software drivers or extensions. Simply plug the PMA430 into your Macintosh as described above, and within a few seconds, the PMA430 will be recognized as a Mass Storage Class (MSC) device and mounted on the desktop. You can now use the Hard disk called **PMA400** like any other external hard disk.

2.2 Disconnecting the PMA430 from your Computer

WARNING: You must properly remove (unmount) your PMA430 from the computer before disconnecting the USB cable to avoid loss of data or freezing the computer and/or the PMA430.

DO NOT SIMPLY PULL OUT THE USB CABLE AT ANY TIME!

Windows®

To safely disconnect the PMA430 hard disk, click on the system tray remove icon (green arrow as shown below) and follow the instructions below. Wait until you get a message saying that you can safely unplug the device before disconnecting the USB cable. **Attention:** The operating system will not allow you to safely disconnect the PMA430 if a running application (such as Windows Media® Player) is using one of the files. You will have to close all the open PMA430 files in any running application as well as Windows Explorer®. Sometimes, you will even have to close the application you have used to open files from the PMA430. Using the green disconnect arrow in the system tray will then allow you to safely disconnect the PMA430.

1. The safe remove icon is in the system tray next to the clock.



Windows® XP



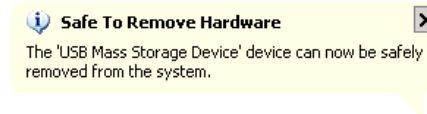
Windows® 2000 & Windows® ME

2. Click on the icon to eject (unmount) the PMA 400 from the computer and select the 'Safely remove' message.



Windows® XP

3. There will be a message indicating that it is now safe to disconnect the PMA430. You can now go ahead and unplug the USB cable from the PMA430.



Windows® XP

Macintosh®



Drag the PMA430 hard disk icon towards the trashcan, the trashcan will become a big arrow as shown in the screen shot to the left. Drop the hard disk icon onto the arrow. The hard disk icon will disappear from the desktop. You can now safely unplug the USB cable from your PMA430 and/or computer.

3 System Recovery

If for some reason you need to restore your PMA430 to its original factory condition, then you need to perform a system recovery. A system recovery will erase personal files and programs that you may have installed on your device. In order to be prepared for this situation, you should back up the following files from your PMA, for example by storing them on your computer.

- The **PMA400_recovery.zip** from the folder **/Archos/PMA_Recovery_zip**
- The **progfs.img** from the **System** folder
- The sample music, video, and photos if you would like to keep them
- Any personal data of which you do not already have another copy. You might also want to synchronize your calendar, Todo list and contact manager. On how to do this, see the chapter on Qtopia™ Desktop Application.

If you had not backed up the **PMA400_recovery.zip** file to your computer, you can download it from the ARCHOS website. Be aware that it is a very large file, nearly 30 Megabytes.

To reset your PMA430 to factory condition (minus the sample music, video, and photos), you should;

- 1) Connect your PMA430 to your computer.
- 2) Backup any personal data you can from your PMA430. Note that this might not always be possible!
- 3) Do a complete format of the PMA430 hard drive
- 4) Copy the unzipped folder onto the newly formatted hard drive

Disconnect your PMA430 from your computer as normal and then do a hardware (cold) reset by pressing the recessed reset button in the small hole on the bottom of your device. Your PMA430 will reboot as in factory condition minus the sample media files. You can now copy your personal files and the installed programs back onto it (see the section **Linux®, Qtopia™ and the PMA430 File System** in the **Overview** chapter for more information on this) and synchronize your calendar etc.

PART II

THE ARCHOS™ APPLICATIONS TAB



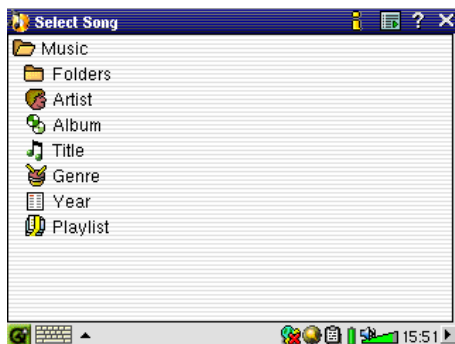
4 Music Application

4.1 Playing Music

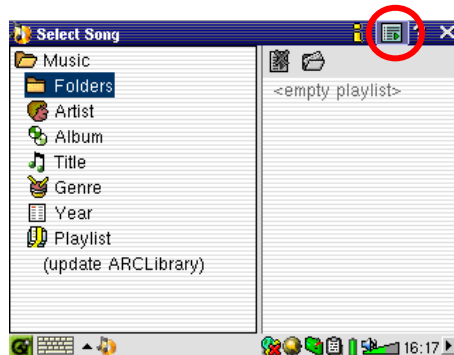


Music

This is the music player application. When you click on this icon in the main screen, you will be sent directly to the **Music Browser**. From the music browser you can create a playlist of songs or you can just select songs to listen to.

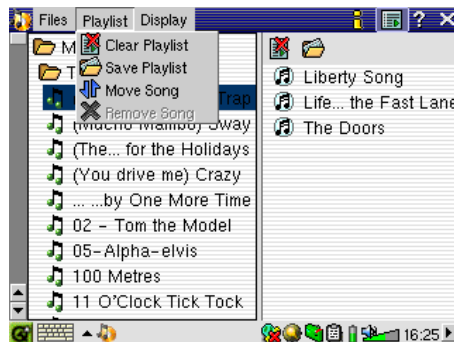


1. Choose to access your music by browsing **folders** or by music characteristics. When you play a song, all songs from the group (for example, from the same album) will be added to the Playlist and the selected song will start playing.



2. To create a Playlist, click the RIGHT button and the Playlist panel will appear. Alternatively, you can tap the Playlist icon on the upper menu bar (see the circle).

Note: If tracks are displayed in the right panel, this means a Playlist is already open. Close this list by clicking on the Playlist icon with the red cross.



3. In the left pane, highlight a song and click the PLAY button. The song will be added to the Playlist. To add a folder, click the menu button and select "Add to Playlist" from the **File** menu.

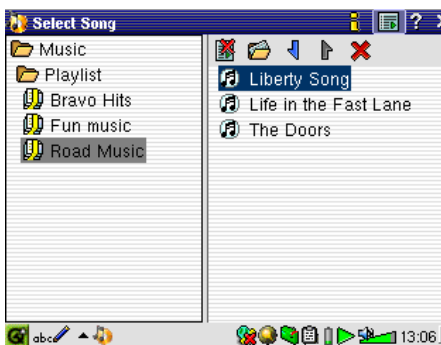


4. Various playlist commands exist in the pull-down menu or in the playlist window.

To navigate between **File**, **Display** and **Playlist** menus, use the RIGHT and LEFT control of the navigation pad.

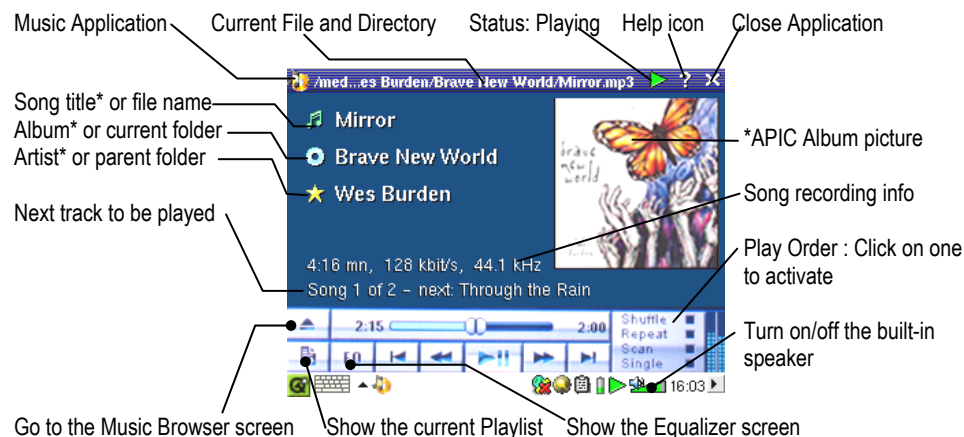


5. When you save a playlist, it will be saved to the Root folder. Using the **File Browser**, move the Playlist into the Music folder. When you now update the ARCLibrary it will then also be available in the Playlist category.

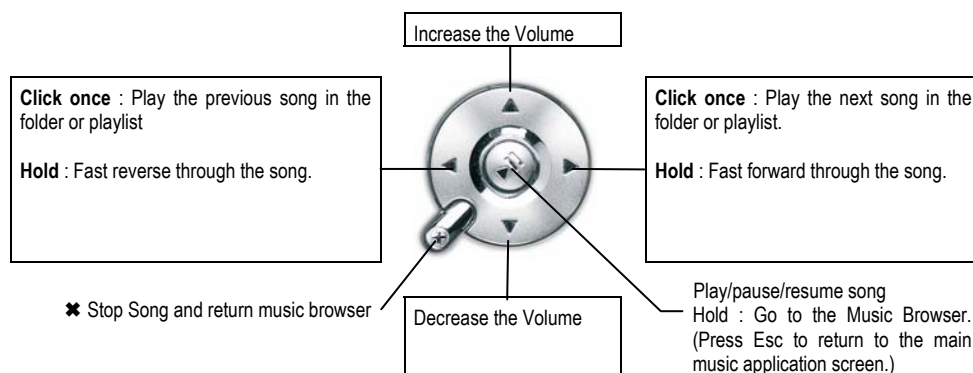


6. Clicking the play button on a Playlist will load the Playlist and then start playing the first song of the list.


The main screen of the music application is shown below. The icons in the bottom left corner let you access the music browser screen (to add more songs into the currently playing list of songs), the Playlist screen (to see what songs are in the current Playlist), and the Equalizer screen (to adjust the sound quality).



Button controls while a song is playing



To lock the PMA430 buttons, hold down the ARCHOS button for 3 seconds. The message "Buttons and screen locked" will appear. Pressing any buttons or the touch screen will now not have any effect. In order to unlock the buttons and the screen, press the ARCHOS button again for 3 seconds.

Pressing the Home button  for 3 seconds will switch on and off the external speaker.

4.2 The ARCLibrary™ - Browsing by Artist, Album, or Title



The ARCLibrary is a database of all the songs in the **Music** folder. Many music files contain information to describe the music file, called tags. Through these tags, the ARCLibrary let you choose your music to play by artist, album, song title, genre, or year. Depending on the source of the file; not all these tags are available. Files of the type .wav do not have any tags because the format does not allow it.

After copying music files to the Music folder on your PMA430, disconnect it from your computer. you will now have to go the music browser (just start the Music application) and select the menu bar item **Update ARCLibrary**. The PMA430 will then check to see if there are new songs in the music folder and add them to the database of known songs. You will now see your newly copied music under the different characteristics. If your music files do not have the description tags then they will be classified under **unknown**. The file name will be used in place of the title if there is no song title tag.

4.3 Putting Music onto your PMA430

Your ARCHOS™ product is designed to play PlaysForSure digital contents which means that wherever you find music for sale on the Internet with this symbol, you will be able to transfer it onto your PMA430 using Windows Media® Player. For more information on PlaysForSure online stores, visit the website (www.playsforsure.com). The PMA430 is designed to work seamlessly with Windows Media® Player (WMP) versions 9 and 10. The Windows Media® Player software is used to download digital media content from the Internet to your computer and organize it. You will also use it to sync (copy) the contents of your Windows Media® Player media library to your ARCHOS™ device.

Please note: In order for Windows Media® Player to recognize your PMA430 (in order to be able to synchronize to it), you need to install a plug-in onto your computer. To do this, connect the PMA430 to your computer, launch the Installer from your PMA430 (\Archos\PC Installation\Setup.exe), click the + next to Archos Windows Media® Player plugin and double-click Archos WMDM plugin.

Synchronizing Music from Windows Media® Player (WMP) to the PMA430

Windows Media® Player (WMP) allows you to synchronize music between your computer and PMA430: That means, it will add music files to your PMA430 so that you have the same digital media on your PMA430 as you have in your Windows Media® Player library. The synchronization is one way, that is to say, copying tracks from your computer to your PMA430, but not vice versa. You can choose to sync only certain songs or to sync your entire library.

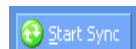
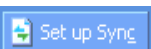
Synchronizing Music from Windows Media® Player (WMP) 9 to the PMA430

Access the **Copy to** tab in WMP 9. On the left hand side, you should see music files from your music library (saved on your computer) and on the right, the files and folder on your PMA430. Check the files you want to copy to the PMA430. Make sure you have selected the folder on the PMA430 into which you want to copy your music. In the top right corner of WMP, you will find the **Copy** button which starts the synchronization process.



Synchronizing Music from Windows Media® Player (WMP) 10 to the PMA430

Access the **Synchronise** tab in WMP 10. If this is the first time you are using this option, WMP will offer to set up automatic synchronisation of your music files. If this box is checked, every time you connect your PMA430 to your computer, WMP will automatically start up and check to see whether any of the music files on the computer have not yet been copied to the PMA430. These files will then be copied to your computer. If you choose to manually synchronise your files, you can always set up automatic synchronization by clicking the **Set up sync** button.

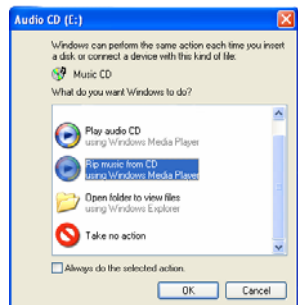


On the left hand side, you should see music files from your music library (saved on your computer) and on the right, the files and folder on your PMA430. Check the files you want to copy to the PMA430. Make sure you have selected the folder on the PMA430 into which you want to copy your music. On the tool bar, you will find the **Start Sync** button which starts the synchronization process.

Attention: Files deleted from the WMP music library will also be deleted from the PMA430.

Transferring your CD collection to the PMA430

The process of transferring music from a CD into files for your PMA430 is known as 'ripping'. It is actually a transcoding process, taking the CDA (CD Audio) format and converting it to WMA or MP3 format which the PMA430 can read. There are many music ripping programs on the market, but the easiest thing to do is to use Windows Media® Player to do it. In fact, when



you place a music CD in your computer, Windows® will ask you if you would like to rip it. Depending on the power of your computer, to rip a 60 minute CD, it will take anywhere from 10 minutes to 60 minutes. Once this is done, the album will become part of your music library. Connect your PMA430 to your computer with the supplied USB cable. Now, you go to the **Sync** tab and tell Windows Media® Player to synchronize that album to your PMA430. It will then transfer that album to your PMA430.

Note: Some music CDs have a special copy protection system that will not allow Windows Media® Player to make music files from them.

Installing Windows Media® Player (WMP) 9

If you have Windows® ME, and 2000, you should use Windows Media® Player 9. The easiest way to install this software is to visit the Microsoft® Website and download the very latest version, or install the version found on the PMA430 itself.

Installing Windows Media® Player (WMP) 10

You must be running Windows® XP (Service Pack 1 or higher) in order to install Windows Media® Player 10. Please visit Microsoft's website to download the very latest version of Windows Media® Player 10.

4.4 Play Music through your Home Stereo

Instead of connecting the red and white AV Out cables of your TV Cradle to your television, connect them directly to your stereo system's auxiliary inputs. Then put your device into the TV cradle to play your music. To avoid distortion, ensure that the output volume of the PMA430 not too strong as this creates distortion.

You can also purchase the ARCHOS travel kit which gives includes an AV Cable. Just plug this cable into the headphone jack of the PMA430 and the other end's white and red plugs into the Aux in, CD in, or line-in of your stereo system.

4.5 The Resume Functions



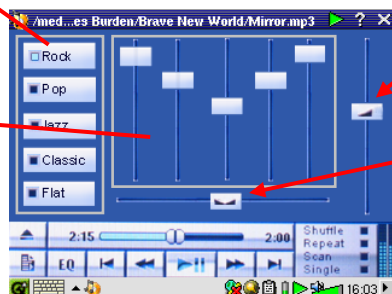
On the Pockets AV/ARCHOS tab, you will notice the Resume icon. Select this icon for example after having switched off your PMA430 to continue playing the last played audio or video file from where you left off.

4.6 Customizing the Equalizer

To set the equalizer, tab the EQ button. You will now be able to adjust the PMA430's five band equalizer. Tab on the buttons on the left hand side to select a style,

and move the sliders to adjust increase or decrease the response for the given frequency range

(Bass, Medium-Base, Medium, Medium-Treble, Treble). Modifying these settings changes the sound in real time.



The slider on the right lets you change the volume.

The bottom slider lets you choose to send the sound more to the left or the right speaker/headphone.

5 AudioCorder Application



AudioCorder

With this application you can make digital audio recordings from the built-in microphone (Int. Mic), a connected dynamic microphone (Ext. Mic), or from a line level audio source (Line In) such as a cassette player, CD player, or the line output of your home stereo system. You can use the red and white cables (AV in) of your TV Cradle to make line-in recordings or you can purchase the optional ARCHOS travel kit which will allow you to make line-in recordings with just a cable and input adapter, thus making recordings anywhere, and without the TV Cradle.



- 1 Choose your recording source, Internal microphone, external microphone, or line in.
- 2 Choose the quality of the recording (see technical specs for exact bitrates)
- 3 Choose the format of the recording. .wav recordings will not allow artist and album tagging.
- 4 If desired, you can set a fixed recording time.
- 5 Press to pause your recording. Press again to resume recording.
- 6 Press to start your recording.
- 7 Press to stop your recording.
- 8 Default names for the recording. Using the text input system, you change these.
- 9 Recording time left or available (left) and elapsed recording time (right).
- 10 VU meters for the recording level
- 11 Recording gain control

Your recording will be saved in the folder **/Music/Recordings**. You can use the **File Browser** application to move or copy your files to a different location if desired. A recording will use the field **Title** as the file name.

6 MUSIC - Using iTunes™ with your PMA430



The easiest way to transfer music files between a Macintosh® computer and your PMA430 is to use the Macintosh Finder™ to drag and drop the files to and from your Macintosh®. Keep in mind that Macintosh® uses the AAC format natively and that only your MP3, WAV, and WMA files will play on your ARCHOS device.

However, for Macintosh® users who do want to use the PMA430 with iTunes®, ARCHOS has developed a special i-Tunes® plug-in. You will find the folder **iTunes plug-in** in the **ARCHOS** folder on the PMA430 as well as on the ARCHOS website. In this folder you will find a plug-in for Mac OS 9.x and another folder for Mac OS 10.x. You will also find a JPEG image illustrating where you need to copy the plug-in to. Once this is done, iTunes™ will recognize the PMA430 as a 'Device'.

To make your user experience easy as possible, please keep in mind the following.

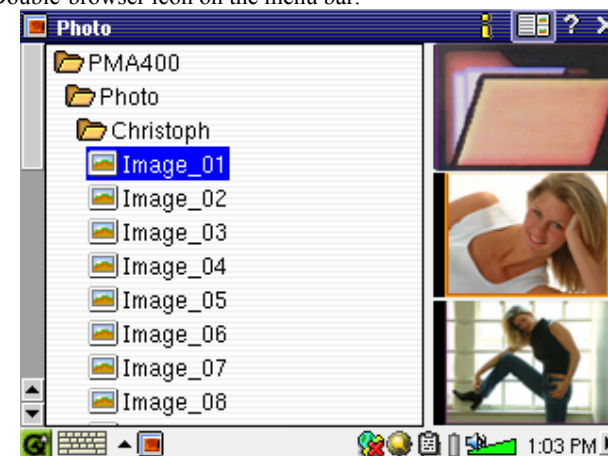
- 1) Music purchased at Apple's on-line music store are copy protected with a proprietary encryption system. The ARCHOS device will not be able to play this purchased music. It will happily play MP3 format files without problem.
- 2) When you create your Playlists with iTunes® (you can only create Playlists from songs that have been copied to your PMA430), your Macintosh® will save these Playlists to the root directory of your PMA430. It will not save them to the PMA430 Music directory. It would be best to use the PMA430 itself to make Playlists and then save these Playlists to the Music or some other convenient folder.
- 3) When you drag and drop MP3 files from your iTunes® library to your PMA430, the i-Tunes® program will look at the ID3 tag information of the MP3 file, and create a folder on the root of your PMA430 using the name of the Artist as the folder name. Then it will take the Album name ID3 tag, and create a subfolder with that album as its name. Finally, it will take the MP3 song itself and place it into that album subfolder. Thus, although it is a clean structure of artists and albums, i-Tunes® does not follow the PMA430 convention of placing the music into the **Music** folder first.

7 Photo Application



Photo






This is the photo viewer application. When you click on this icon in the main screen, you will be sent directly to the **Photo Browser**, which lets you look through your photos. A thumbnail photo of the highlighted file name will be shown on the right between the thumbnails of the file (or folder) just before and just after. You can hide and display the thumbnail panel by clicking the RIGHT and LEFT controls or by tapping on the Double-browser icon on the menu bar.



Click on the PLAY button and the highlighted file name will be displayed.



Use the UP and DOWN buttons to view the previous or next photo in the folder. The LEFT and Right controls also permit you to rotate the images. The menu bar above the photo provides the following options, which are also available via the menu button.

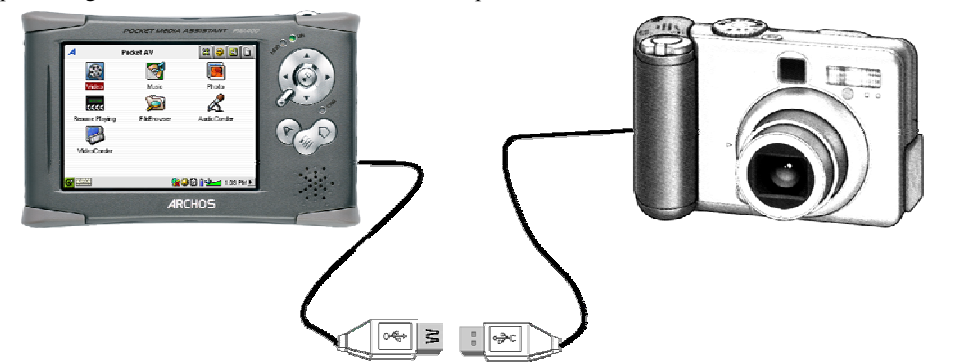
	Action	Alternative button to use
	Zoom in – show picture at actual size.	PLAY
	Zoom out – show multiple (2x2, 3x3, 4x4, 5x5) pictures at a time.	ESC – to return to the standard display size
	Rotate the picture by 90° to the left.	LEFT
	Rotate the picture by 90° to the right.	RIGHT
	Display the picture in full-screen mode. To return to the normal mode, tap the picture twice.	

When zooming in on a picture, the image can be moved by touching the screen in order to see those sections which do not appear in the window. The touch screen or the navigation pad can be used for this purpose.

To display information on an image, use the menu button and select **Info** from the **Display** menu.


7.1 Transferring pictures to your PMA430

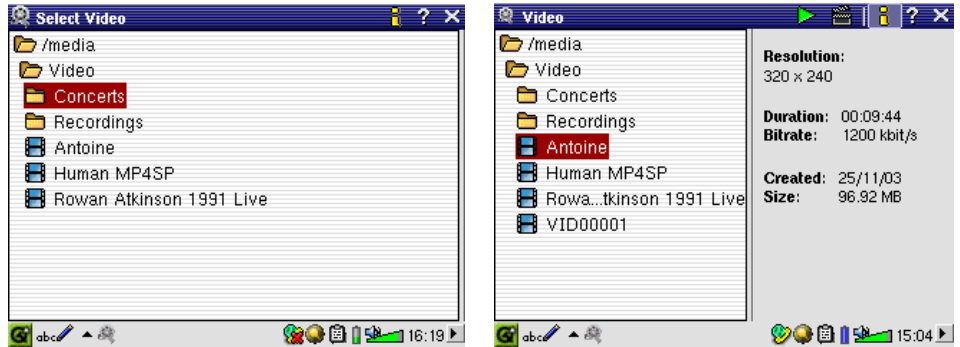
From a camera, you can transfer your pictures to your PMA430 by first putting them on your PC. Then connect the PMA430 to your computer and paste your image files to the **Photos** folder of the PMA430 hard drive. Another possibility is to connect your digital still camera to the USB Host port using the included short USB Host cable adapter.



If your camera follows the Mass Storage Class (MSC) standard for USB connection, then your camera will show up in the file browser as the folder **/ExternalDevice**. If you look in this folder you will see your photos. See the chapter on the **File Browser** for instructions on how to copy files. **Attention:** Not all digital cameras are MSC type devices, in which case you will have to transfer your images to your computer first. Note also that you cannot transfer files from your PMA400 to a camera!.

8 Video Application

 This is the video viewer application. When you click on this icon in the main screen, you will be sent directly to the **Video Browser**. To watch a video, you simply highlight the video file and then click the **PLAY** button. Keep in mind that the PMA430 will only play video files that are encoded in MPEG4 format (see section **Playing Video Files from the Internet** below for details). Other files formats such as .mov, or .mpg, will not automatically be playable. However, you can yourself convert certain files types, see the chapter **Creating MPEG4 Video Files with your Computer**.



Select the desired video file and click **PLAY**. Click on the  button (top right) for file info.



To watch your video files on a television, make sure you have connected your TV Cradle correctly to your television (see the **TV Cradle** manual) and then hold down on the LCD/TV button on the top of the unit or hold down the TV/LCD button on the ARCHOS remote control for 3 seconds. If you don't see a clear color image, you may have to set your PMA430 to your local television standard (NTSC or PAL) in **Settings > TV Out**. The screen overlay information will disappear after a few seconds.



- Use the **PLAY** button to pause/resume the video.
- Use the **UP/DOWN** buttons to control the volume.
- Hold down the **RIGHT/LEFT** buttons to fast forward or fast reverse through the video.

- Touch the screen to Hide / Show the overlaid video file information.

8.1 The Resume Functions



On the Pockets AV/ARCHOS tab, you will notice the Resume icon. Select this icon for example after having switched off your PMA430 to continue playing the last played audio or video file from where you left off.



Moreover, if you have stopped a video file in mid play, the next time you highlight that video file, you will notice a movie clipboard icon in the upper menu bar. By clicking on this icon, the video file will start from the place where you last stopped it.

8.2 Display Format Settings

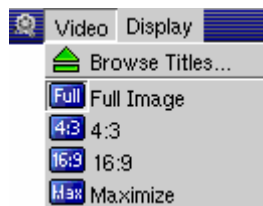
While you are watching a video, you have the following menu items.

Display



You can get file information about the video you are watching or set the audio equalizer.

Video



You will notice that you have a number of display format options. These format options allow you to adapt videos recorded in different formats for viewing on the internal LCD screen or on the TV. When watching your video on the LCD, the default format is **Maximise**, on the TV, it is **Full**. To choose the most appropriate format option for a particular video file, you can change this setting at any time.

- | | |
|------|---|
| Full | Show the entire image, do not cut off any part of it. |
| 4:3 | The image is cropped to have a 4 by 3 aspect ratio and enlarged until it fills the screen |
| 16:9 | The image is cropped to have a 16 by 9 aspect ratio and enlarged until it fills the screen horizontally |
| Max | The size and aspect ratio is chosen automatically to give the best possible perception on the internal LCD. |

8.3 Playing Video Files from the Internet

The number of encoding and compression schemes currently used to create video files is very extensive and seems to change on a weekly basis. There are so many standards, formats, and encryption methods that it is very possible that the video file you download from the Internet will

not play right away on your device. Due to certain “variations”, even when video files are formatted in “MPEG4” they may not play right away. The PMA430 series can play video files of type MPEG4 Simple Profile which have an MP3, PCM (standard .wav) or IMA-ADPCM (compressed .wav) audio sound track. It can play such video files at a maximum size of 720 by 576 pixels (25 frames/second). The PMA430 will not directly play files of type .mov, .mpg, .mpeg. If you have video files of these other types that you would like to view on your PMA430, they will have to be converted first. You will have to use the software found in the **ARCHOS** folder to re-encode them into the proper MPEG4 format with an MP3, PCM, or IMA-ADPCM sound track. See the chapter **Creating MPEG4 Video Files with your Computer** for details..

9 VideoCorder Application

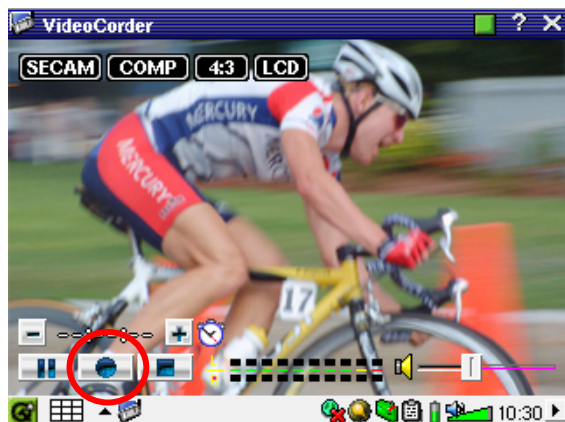


VideoCorder

This is the video recorder application. Connect your TV Cradle to your home entertainment system as shown in the **TV Cradle** manual. Once this is done, you can use the VideoCorder application to make recordings like you do with a video cassette recorder (VCR), either by manually starting and stopping the recording, for a fixed amount of time, or scheduled for when you are away. When you click on this icon, you will go directly to the pre-recording screen. From this screen you can instruct the PMA430 exactly how and when you want your video recording to be made.

Manual Recording

If you click on the Record button on the bottom right of the screen, your recording will start. Click on the Stop button next to it when you want to stop your recording. You will find your recorded video in the folder /Video/recordings.



Use the RIGHT and LEFT buttons to adjust the volume level input, or drag the control on the left bottom of the screen. You can see current sound levels on the VU meters in the center bottom of the screen.

On the top left of the screen, you will see the recording signal type NTSC (North America) or PAL (Europe), the input signal COMP (composite input – yellow connector) or S-VIDEO (S-Video input), the Format 16:9, 4:3, or 2.35 (aspect ratio of recorded image), and the resolution LCD (320x240 pixels) or TV (512 x 386 pixels).

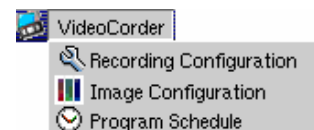
Fixed Time Recording

Use the + and – buttons to adjust the length of the recording. As shown in this picture, the recording was set for a fixed time of 5 minutes. When you click on the record button, the PMA430 will start recording and stop automatically after 5 minutes. Notice the white and red counters at the top right of the screen. They tell you how much time has elapsed and how much time is left to record. You can increase or decrease this time even once your recording begins.

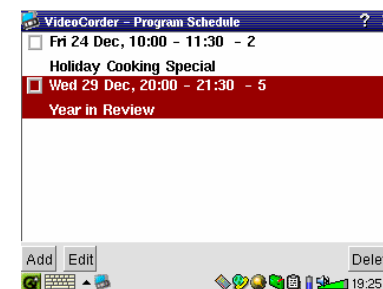


Fixed time recording of 5 Minutes

Scheduled Recordings

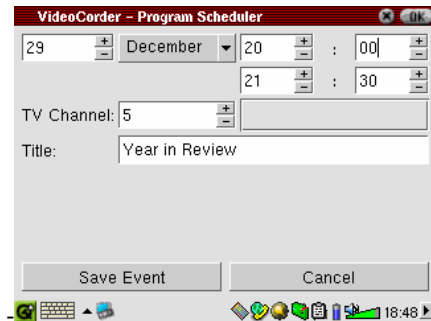


On the menu bar click the item Program Schedule. This will open and show the current scheduled programs. You can add new programs to record or modify (edit) the scheduled items that have not yet started.



Scheduler with two items

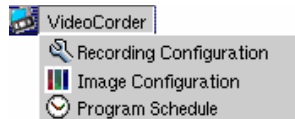
Click on the Add button to add another recording.



Second scheduled recording being set

Once a recording is set, you can shut off the PMA430 and leave it in the TV cradle.

9.1 Setting other Recording Parameters



If you prefer, you can adjust the settings for your own specific needs in the **Recording Configuration** screen and the **Image Configuration** screen.

Note: Higher quality, higher resolutions and larger frame rates per second (fps or kbits) will result in more pleasant pictures, but require more space in order to be saved on the disc.



Recording Configuration Screen

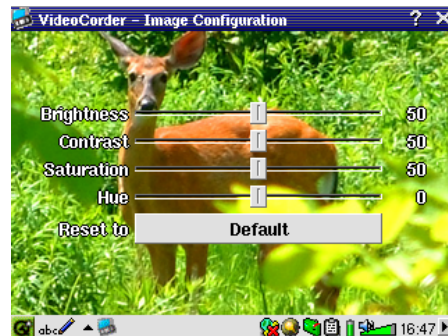


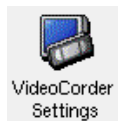
Image Configuration Screen

9.2 Copy Protection

The PMA430 video recording system is designed to respect the copyright protection system. If the source of your video is copy protected, the PMA430 will record in protected mode. You will see a "P" icon on the recording screen (not playback) indicating that the file will be a protected file. Protected files can only be played back on the PMA430 that created it. The file will not play

on a computer. Further, the playback of protected files will be limited to the built-in LCD screen PMA430 will not play them back on an external television

10 Set-up for scheduled video recordings

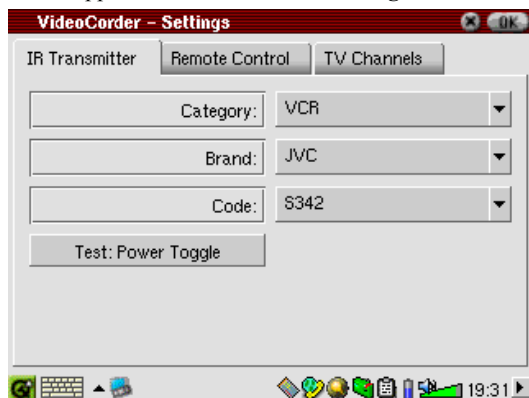


In order for the PMA430 to turn on and off your video device and also change its channels via its TV cradle, you need to set it up to send the correct infrared codes to your video cassette recorder (VCR), cable box, or satellite receiver. If you do not plan on making scheduled recordings, then you do not need to install the IR emitter or set the infrared emitter code.

Before following the procedure of setting the emitter code, insure that your PMA430 is connected in the TV Cradle and that the IR emitter cable is plugged in and placed in front of your tuner's (VCR, cable box, satellite receiver) infrared receiver. See the TV Cradle instructions for set-up and for the exact placement of the emitter.

10.1 Part 1 : Choose your Category, Brand, and Model

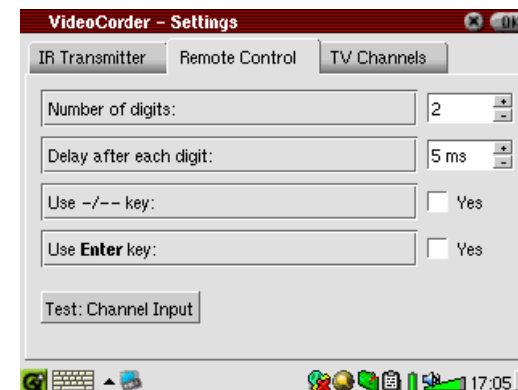
In the **Settings** tab, go to the application **VideoCorder Settings**.



1. Select the category of device that you want the IR Emitter to control. You have the choice of a VCR (video cassette recorder), Cable Box, or Satellite Receiver.
2. Select the brand of your device.
3. Select the first code in the list of codes.

Test: Power Toggle : When you click on this test button, the PMA430 will send a signal to the TV Cradle, which will then send a signal out to the Infrared Emitter stuck to your device (TV, VCR, Cable box) and turn your device on and off. Click this test button again and your device should change from on to off or off to on. If pressing this button does not turn on and off your device, choose the next code in the list, and try again. If none of the codes seem to work, check that the infrared emitter is directly over the infrared sensor on your tuner device

10.2 Part 2: Testing the channel changer

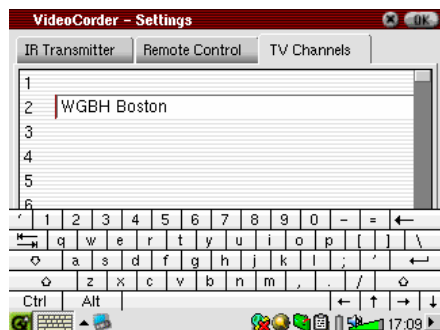


Test: Channel Input : When you press the Test: Channel Input button the PMA430 will send a signal through the cradle to the Infrared Emitter stuck to your device and change the channel. If the Number of digits parameter is set to three, it will try to select channel 123. If that parameter is set to 2, it will send the code for channel 12. If the test does not change the channel on your tuner, go back to the IR Transmitter tab and try the next available code for your category and brand of product.

Parameter	Description
Use -/-- Key:	Set this to On if normally, you have to press a key with this icon on your device's remote control in order to select a channel.
Number of digits	Set the number of digits that your device can recognize for a channel. <i>Example: Set to 3 if you need to choose a channel greater than channel 99.</i>
Use Enter Key	Set this to On if normally, you have to press the Enter key on your device's remote control after you enter the channel number. <i>Example: If you normally press 1, 3, Enter for channel 13, then you would need to set this parameter to On.</i>
Delay after each digit	Change the delay between the emission of each digit of a channel. You may need to adjust this if the PMA430 seems to send only half the digits of a channel or more digits of a channel. <i>Example: Adjust the key delay and retest channel select if it sends channel 1 instead of 12 or sends 112 instead of 12.</i>

10.3 Part 3: Give your channels a name

For your convenience, you can name any of the channels and the PMA430 will remember their names.



Channel naming screen

Note: In some rare cases, none of the infrared codes available for your device might work for either the ON/OFF or channel changing functionality, or both.

11 File browser Application



File Browser

The file browser application allows you to view your files which are stored on the PMA430 as well as on a connected Mass Storage Class (MSC) device, such as a digital camera (see the section on **Tranferring picture to your PMA430** in the

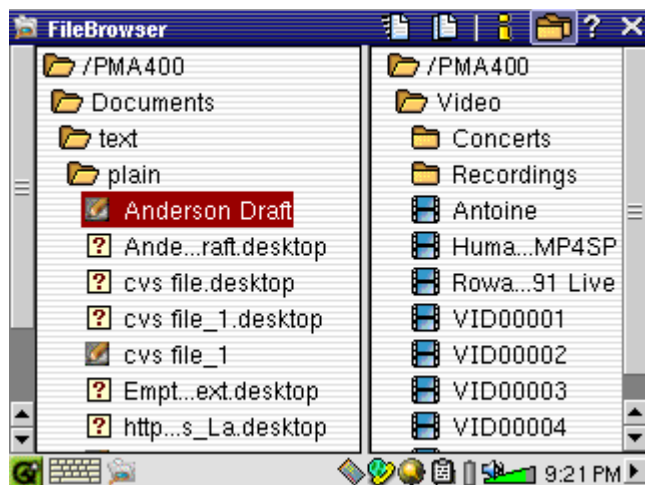
Photo application chapter) This application has the standard file and folder controls such as:

Rename	Modify the name of a file or folder.
Copy	Make a copy of the file or folder.
Move	Move the file or folder to a different directory.
Add to Documents	Files which are not already under the Documents hierarchy are copied here.
Delete...	Remove the file or folder from the PMA430.
Create Folder	Create a new folder in the selected directory or folder.
Select all	Select all files and folders in the current directory.

All of these options are available in the menu.

In order to see file information (extension, date, size), use the corresponding menu items in the **Display** menu.

When you open the application you will see the top level directory **/PMA430** which is also known as the root directory or root folder. All our files and folders will be stored inside this directory. Click on the Double Browser icon on the top right of the menu bar or click the RIGHT button. This will open second browser panel. In one panel, locate the file you want to copy; in the other, open the folder into which you want to copy it. The active panel, showing a highlighted file or folder name, is the source panel, and the other panel shows the destination folder. As files can be copied or moved from either panel, it is important to pay attention to which panel is active.



In this example, the menu option **Move**, would move the file **Anderson Draft** from the folder **/PMA430/Documents/text/plain** to the folder **/PMA430/Video**. The menu command always applies to the highlighted item. Remember that the source window is the one with the highlighted item, and the destination window is the other one. You can close

and open the second window with the LEFT and RIGHT buttons or by using the Folders icon on the menu bar.

12 Creating MPEG4 Video Files with your Computer

How to create an MPEG4 video file

Please understand that video re-encoding is not always a simple one button process. Video segments that come from your digital camcorder or which are freely available on the Internet are encoded in many different ways. Your files are thus maybe not in a format the PMA430 can play (see the section **Playing Video Files from the Internet** in the **Video Application** chapter for more information). This is due to the relatively new nature of the ISO (International Standards Organization) MPEG4 video format. Unlike its predecessors MPEG1 and MPEG2, there are a number of levels in this format and thus not all MPEG4 video files will work on all MPEG4 players, and older MPEG1 and MPEG2 files must be re-encoded into this format. You can convert these files using the software you received with your PMA430. You might find this process initially complex, but once you have converted the first file, it will be a routine to convert other files into a format that will play on your PMA430.

PC Tools

The PMA430 is delivered with two PC based programs that allow you to create MPEG4 Simple Profile .AVI video files. They are the *MP4 Translator* and *Virtual Dub™*. The MP4 Translator will call the Virtual Dub program and give it the correct parameters to encode your video from its original format, .avi or .mpg (mpeg 1), and then encode it into an MPEG4 .AVI file. The file will be scaled in order to be played back properly. You will also need an MP3 audio codec (available freely on the Internet) in order to create the proper sound track for the movie.

12.1 Installing the PC Software

If your video file is not an MPEG4 Simple Profile .avi file of the proper size, you will need to re-encode it using the following utilities. For the PMA430, you will need to create an AVI file that is MPEG4 Simple Profile with a resolution up to 720 x 576 (depending on frame rate) and a sound track that is stereo MP3 or WAV. A resolution of 320 x 240 is adequate for watching on the internal LCD screen. However, videos that you intend to watch on an external TV, a resolution of 640 x 480 is recommended.

You will find an Installer to install MPEG Translator and Virtual Dub™ in the ARCHOS folder on your PMA430. Please turn off any anti-virus software for the time of the installation and install the programs in the following order.

MPEG 4 codec (Compression/Decompression)

In order for MPEG4-Translator to compress the video in a file of the format MPEG-4 SP that the Gmini™ can read, it requires an MPEG 4 codec to be installed on your computer. If you do not have the appropriate codec installed, MPEG-4 Translator will tell you on start up which codec it requires. You will be able to download it for free from the Internet.

Virtual Dub™

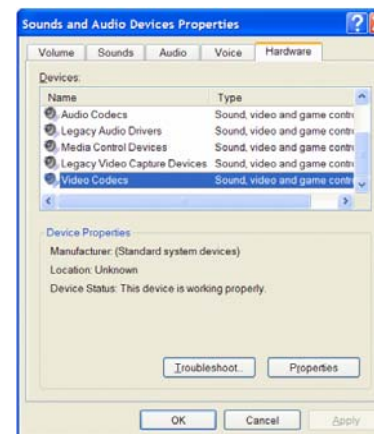
VirtualDub is an utility for transcoding one video file into another. This is a general purpose transfer and cleanup utility which has many options allowing for even the most difficult video translations. When you install it onto your PC from the PMA430, it will automatically unzip. It will prompt you to save it to C:\Program Files\VirtualDub. You should use this default directory location or will have to instruct the Mpeg4 translator program where to find it.

MPG4 Translator

This program, developed by ARCHOS, is a “Front-end” for the Virtual Dub program. It sets all the parameters for Virtual Dub specifically to create a video file in the right size and format to be read by the PMA430. When you run it for the first time, the MPEG4 Translator will need to locate the Virtual Dub program. If you did not install Virtual Dub in the default location, it will ask you to navigate to the directory where it was installed when you open MPEG4 Translator.

MP3 Sound Codec

Remember, in order for the PMA430 to be able to play the video, it must have an MP3, PCM (standard .wav), or ADPCM (compressed .wav) sound track. If the source video file did not have one of these sound track formats then your destination file will have no sound. MPG4 translator will signal this error condition. In order to keep the sound of your video, install an MP3 encoder for Virtual Dub to use. There are MP3 codecs (usually packaged together as an encoder and decoder) available on the Web for you to download. If you choose to use the *LAME* codec, make sure that you have a version built with the ACM front-end. You can find other MP3 codecs on the web by using the search terms *ACM*, *MP3* and *CODEC* in your favorite web search engine. Once this MP3 codec is installed into your system, MPEG4 Translator will be able to create final video files with MP3 sound, even if the source video file does not have an MP3 sound track.

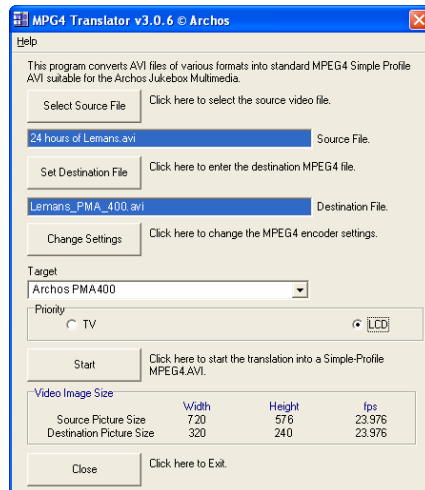


If you are unsure what codecs (audio and/or video) have been installed on your computer, you can see the list by going to the following location.

For Windows XP, click on **Start > Settings > Control Panel > Sounds and Audio Devices Properties > Hardware >** choose **Audio Codecs**, then click on **Properties**. You will find a list here of all the audio codecs that are installed on your computer. Decoding of MPEG 2 video files is currently not supported by MPG4 Translator. These are usually .mpg or .mpeg format files, not the required AVI file. There are other tools found on the Internet (FlaskMPEG,

Rippack, etc.) that may be downloaded in order to help you with these file types. A good starting place is the website www.digital-digest.com.

12.2 Using MPEG4 Translator



To the left you see the image of the main MPEG4 Translator program. When you first run the program, you will be notified if the required codec has not been installed yet. You should download the codec and install it on your computer. If the Virtual Dub program has not been installed, you will also be notified, and you should install it (found on the PMA430 in the **Archos\PC installation** folder or the Virtual Dub website). If you have placed the Virtual Dub program in a folder other than the installer default folder, it will ask you to locate the program file.

Select Source & Destination Files

In the example above, a source file “24 hours of Lemans.avi” has been selected. You can see on the bottom of the window its original characteristics (width 720, height 576, frame rate 30). Next, you must then tell the program where to place (button: **Set Destination file**) the newly recoded version of the file. You should give it a new descriptive name, such as shown above **Lemans_PMA_400.avi**. Make sure you add the .avi extension. Don’t worry, the original file will not be erased because the new file will have a different extension. If for some reason, you should have selected the same extension and file name (for example to create a file optimized for the TV and one for the LCD screen based on the same source file), a warning will be displayed and you should change the destination file name.

Change Settings

Next, you can change the parameters (button: **Change Settings**) of the encoder to adjust the level of quality of the final image. As for MP3 music, higher video bit rates mean higher quality video, but will also take up more space on your hard disk. A setting of 500



kbps is appropriate for the LCD screen; 900 kbps will give you a nice looking image for viewing on a television. For near DVD quality, you can set it up to 1200 kbps.

Target & Priority

You should select the target as PMA430. You will see a *Priority* box appear. If for example you are re-encoding a video file that is 800x600 in resolution and 30 frames per second, this is beyond the maximum resolution that the PMA430 can play (see Video playback information in the Technical Specifications at the end of this manual). Thus, the MPG4 Translator program will have

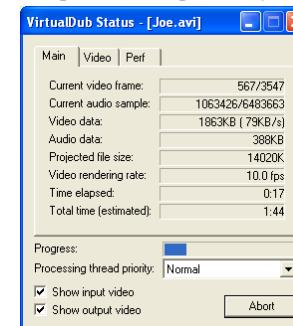


to decrease the resolution. Choosing **LCD** optimizes the final video format for viewing on the built in LCD screen. Choosing the **TV** option will optimize the movie to keep the

highest possible frame rate. You can see what the size and frame rate will be by looking at the **Video Image Size : Destination** parameters. When choosing **TV**, it is understood that the output will be optimized for a television, and not the built-in screen.

Start

Click on *Start* and the program will call Virtual Dub to start processing the video. Depending on the power and speed of your computer, this could take at least real time (a 60 minute long video



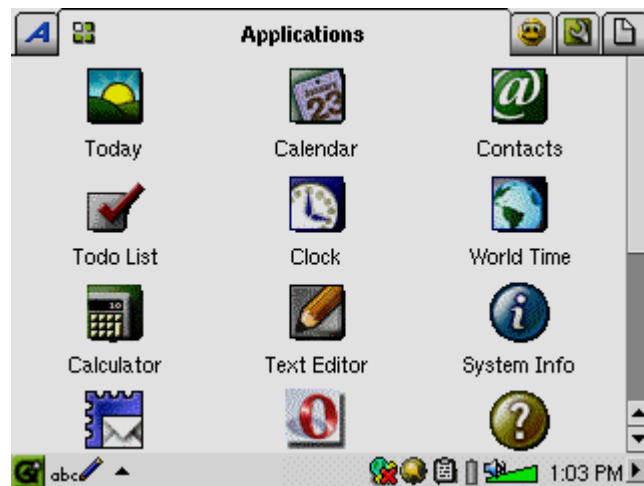
re-encoded in about 60 minutes) but probably much longer. As shown to the left, you will see the progress as Virtual Dub processes the video file.

The Start button might be greyed out for one of two reasons:

- 1) The source file is not a true AVI file. Even if the file name ends with .avi, the internal file data determines if it is truly an AVI file.
- 2) The Virtual Dub program was not located when Mpeg4 Translator was started up. Close the program, restart it, and make sure you locate the Virtual Dub program.

PART III

THE PRODUCTIVITY APPLICATION TAB



13 Personal Information Management (PIM) Applications

The PIM applications are part of the Qtopia operating system which runs on your PMA430. You will find detailed information on how to use these and those applications mentioned in the chapter **Miscellaneous applications** in the online help provided by Qtopia. Open the Help application on the ARCHOS tab and click on the House icon on the right side of the toolbar or access the Help file installed with Qtopia Desktop on your PC (see the section **Usage** in the **Installing and using Qtopia Desktop** chapter).

All productivity applications have an ? icon in the menu bar to access the on-line help.

13.1 Today

Gives you an overview of the current day's open tasks (Todo list application), unread or queued e-mail, and any appointments or events you set up in the calendar.

13.2 Calendar

A standard calendar application that allows you set up appointments and events with alarms as well as view the calendar by day, week, or month. This can be synchronized with the Qtopia™ Desktop application and Microsoft Outlook®. See the chapter on Qtopia™ Desktop for details. Calendar events can be beamed via the infrared port to other infrared capable devices.

13.3 Contacts

A standard address book which allows a generous amount of information for each contact. This can be synchronized with the Qtopia™ Desktop application and Microsoft Outlook®. See the chapter on Qtopia™ Desktop for details. A contact can be beamed via the infrared port to other infrared capable devices.

13.4 Todo List

A standard task list with priority levels and percentage of completion. This can be synchronized with the Qtopia™ Desktop application and Microsoft® Outlook. See the chapter on Qtopia™ Desktop for details. A task item can be beamed via the infrared port to other infrared capable devices.

14 Miscellaneous Applications

These applications are part of the Qtopia operating system which runs on your PMA430. You will find detailed information on how to use these and those applications mentioned in the chapter **PIM applications** in the online help provided by Qtopia. Open the Help application on the ARCHOS tab and click on the House icon on the right side of the toolbar or access the Help file installed with Qtopia Desktop on your PC (see the section **Usage** in the **Installing and using Qtoipia Desktop** chapter).

14.1 Clock

Acts as a clock, stopwatch, and alarm. If you would like to make your own custom alarm sound, place a .wav file (8 or 16 bit PCM only) named **alarm.wav** (case sensitive) into the folder **/System**. The alarm will wake up the PMA430 and then play the audio file. Make sure to leave the built-in speaker checked to **On** in order to hear it.

14.2 World Time

Clock application that allows you to see the current time in 6 different time zones (Paris,Berlin, Los Angeles, Tokyo, Hong Kong, Brisbane). Drag the stylus on the map to view the time in other countries and cities.

14.3 Calculator

Standard calculator application with two modes, simple and scientific.

14.4 Text Editor

Basic text editing program similar to Block Notes on a PC or Simple Text on a Mac. Attention, there is no Save command. The text file is saved as you type. Click on the close file X icon in the top right of the menu bar to exit. Text files can be beamed with via the infrared port to another infrared capable device. Please note that newly created files will be saved in the Documents folder. When this folder contains many files, this can slow don the PMA430 or result in messages such as “Memory Low” or “Memory Critical”, so you might want to consider creating a folder (e.g. named “Data”) in the root directory of the PMA 430 to store the files you do not access frequently.

14.5 System Info

Gives information about memory and hard disk usage, CPU tasks, software version, product ID, and WiFi MAC address (Media Access Control address, which is effectively an identifier for your device when connected to the network).

14.6 Help Browser

Gives you access to the Help pages for the various applications. The help pages are also directly accessible by clicking on the ? icon in the menu bar of each application.

14.7 Mophun®

This icon will give you access to Mophun® games that you have installed onto your PMA430. You can check the ARCHOS website for these games. Note that if you have not installed any Mophun® games, nothing will happen when you click this icon.

14.8 Terminal

The Terminal application is included for technically interested user. Through opening a command line window, it gives them the possibility to execute a subset of Linux commands, for example to install certain types of applications. Please not that the Terminal application is not supported by the ARCHOS Helpline.

14.9 Pdf Viewer

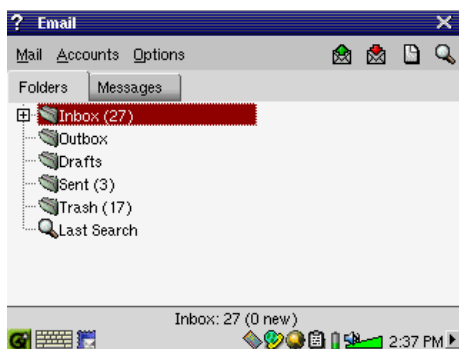
The PDF viewer application allows you to open and read PDF files, such as the user manual, on your PMA430.

15 Internet Applications

In order to use these programs, you will need access to a local network which is connected to the Internet. See the section **Network** in the Settings tab for details on setting up the connection parameters and the choosing the hardware connection.

15.1 E-Mail

This is a standard e-mail application which allows for multiple accounts and POP3 or IMAP mail boxes. The **Network** application in the settings tab must be configured and a connection to the network must be made (network icon in the status bar on the bottom of the screen) in order for this program to send and receive e-mails. This application can handle only a limited amount of embedded HTML in the message field. Your e-mail server settings for incoming and outgoing mail can be set to the same as those of your home computer.



15.2 Opera™ Browser



This is an Internet browser application allowing you to access and display web pages. The **Network** application in the **Settings** tab must be configured and a connection to the network must be made (network icon in the status bar on the bottom of the screen) in order to browse web pages. This browser does not have plug-ins like desktop computer browsers, thus web pages with Flash™ animation, Active X™ controls, media, or PDF files will not display. If it is possible,

Opera™ will ask you if you would like to download the file. You can then open the downloaded file in an application for that particular file type. Pdf files can for example be viewed with an included PDF viewer found on the **Applications** tab. Other files might need to be viewed on your computer. There is a ? help icon in Opera™ menu bar which explains how to use the application.

PART IV

THE SETTINGS APPLICATIONS



16 Audio-Visual Settings

16.1 TV Output

When your PMA430 is connected to a television either via the TV Cradle or with the optional travel cable, you may need to adjust the **TV output** settings to **PAL** for European television systems or to **NTSC** for North American television systems. Most all countries of the world use one of these two formats.

You can set the still image display to **Progressive** if you find that still images flicker on your TV screen. This is usually due to fine lines in the pictures and is not linked to the television nor the PMA430. Setting the parameter to **Progressive** will eliminate such flickering but will also reduce the perceived resolution.

16.2 VideoCorder Settings

If you decide to use the Infrared (IR) Emitter for scheduled television recordings (to change the channels and turn on your TV tuner), you will need to set the infrared codes for your VCR, Cable Box, or satellite receiver. See the chapter **Set-up for scheduled video recordings** for details on how to do this.

16.3 Equalizer

Modifying the Equalizer settings allows you to set the sound quality. This is the same equalizer as in the Music playing application.

17 Hardware Settings

17.1 LCD Settings

Changing this parameter allows you to eliminate any LCD screen flickering.

17.2 Light & Power

Adjusting your screen settings when running on the battery can save power and extend the autonomy of your device. In this section, you can set these values depending on whether your PMA430 is running on battery or is connected via the Adapter/Charger to the mains.

17.3 Recalibrate

Run this application if it seems that the point you touch on the screen with the stylus does not align with the button or control you want. This application will recalibrate the touch screen for horizontal and vertical accuracy.

17.4 Network

This application is the key to making a network connection so that the E-mail and the Opera™ browser can be used. You can make a network connection three ways.

- Via the infrared port
- Via a wired USB to Ethernet adapter (must be an ARCHOS approved adapter)
- Via the built-in Wifi card

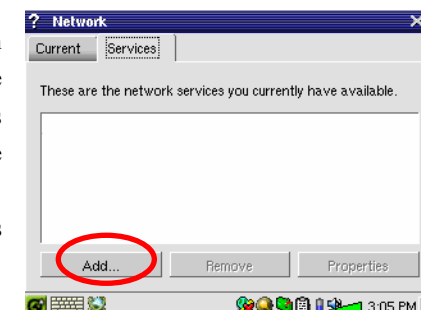
In this example, we will make a Wifi connection at a public Wifi access point.

Start the Network Application



Clicking on the **Network** application will take you to the first screen where you select the **Services** tab. Here is where you can also see available network connection services that have been set up. Since we are creating the first service, the list is naturally empty. Click on the button **Add**.

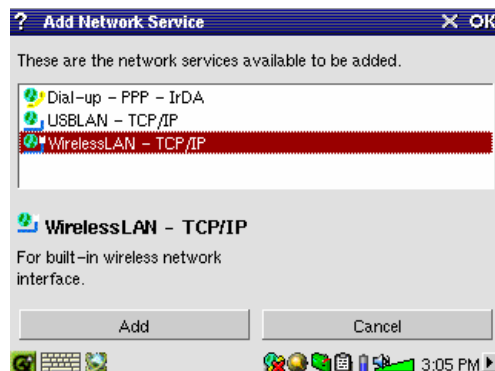
Choose your service



This next screen allows you to choose your hardware connection type.

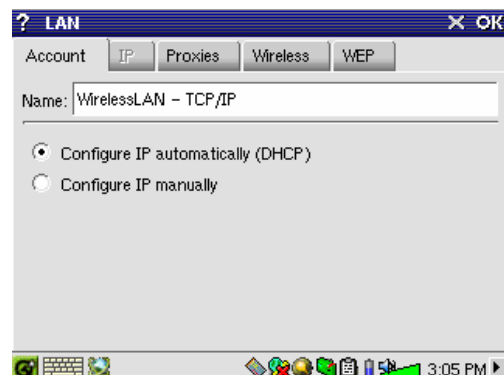
- Infrared port (IrDA)
- USB port (when an optional ARCHOS USB/Ethernet cable is connected)
- built-in Wifi card.

Click on **WirelessLAN** and then click on **Add**.



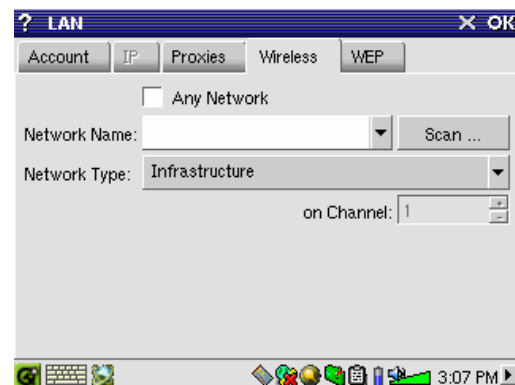
Choose the IP Configuration Type

Typically there are two types of Wifi connections, one at home or work, and one at a public Wifi hot spot. Public Wifi spots will assign your device an IP number. You simply select **Configure IP automatically** and when the connection to the hot spot/public Wifi point is made, it will assign your PMA430 an IP address. On the other hand, in a home network situation or in a work environment (check with your system administrator), you might have to configure the IP address by hand. In this case, click on **Configure IP manually**. Ask the person who set up your Wifi network for an IP address for your PMA430 to connect to the local network.



Scan for active Access Points

Click now on the **Wireless** tab. You now click on the **Scan...** button to scan for an active WiFi access point that is broadcasting. If you have a home network, make sure that your WiFi device has the SSID set to On. This means that your Wifi access point is broadcasting a message telling any device in the area that it is available for a network connection. Several

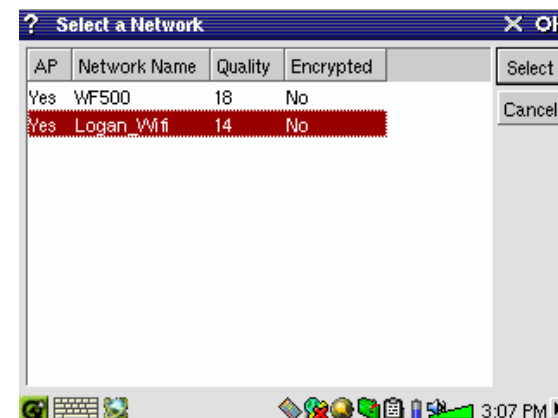


access points could be available, but if the access point is not broadcasting its availability, the Scan function will not 'see' it.

The network type will usually be **Infrastructure**. If you want to connect Wifi devices to talk to each other, such as for networked game playing, then choose the **Ad Hoc** option. This is a connection between local devices. Click on **Any Network** if you just want to accept the first network access point that your PMA430 can find.

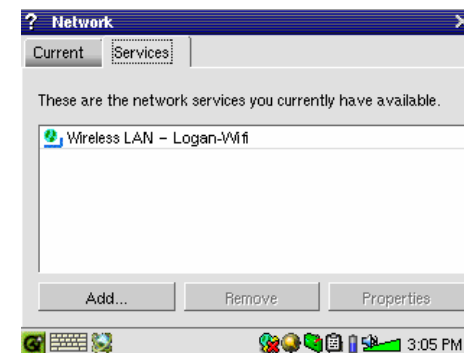
Choose the Access Point

There may be more than one access point in your vicinity. In this example, there are two. Let's choose the one called **Logan_Wifi**. You will notice that the connection quality is lower than that of the access point named **WF500**. This is because the WF500 access point is getting a better signal (probably due to less obstructions between you and the access point). The lower the quality of the connection, the slower the data transfer speed and thus the slower your web pages or e-mail will load. Highlight the access point you want to use and click on **Select**. If the access point shows **Encryption** as **Yes**, then you will have to contact the access provider or system administrator for the encryption (WEP) parameters, which you can set on the WEP tab. Your connection is now set. Click on **OK** to exit.



Service Created

Your service has now been created. The next time you go to the Services tab, you will see all the services that you have previously created. When you are connected to a network, you can open the **Network** application and see the current quality of the data transmission signals by looking at the **Current** tab.



Browsing the Web or Using E-mail

Now that you have a connection service set up, you should use the **Network Connect** icon in the status bar at the bottom of the screen. The red X on the icon means that you are not connected. Click on the icon and then choose which service you would like to connect to. In our example, we choose Logan_Wifi. It will take a couple of seconds to connect and then show the **Connected network** and Wifi Card icons. You can now launch the Opera™ web browser or use your E-mail program. When you are not using these programs, it is recommended that you close the network connection as it would otherwise discharge your battery faster. If one of these applications says “Can’t find DNS server”, this is a sign that you have lost your Wifi connection. Use the status bar icon to disconnect and then try reconnecting again.

Making an Infrared connection

Your PMA430 has an Infrared port which permits you to connect via a mobile phone to the internet. Please be aware that a number of factors, such as your service provider and your mobile phone manufacturer's parameters, influence the success of this connection.

You have 2 options for setting up an Infrared connection:

1) HSCSD/GSM connection

This is the standard way where the connection is made as a normal phone call at the speed of a 9,6k modem. For this connection, you require an Internet Service Provider (ISP) who will provide you with information necessary to establish the connection, such as a user name, password and access phone number.

2) GPRS connection

This relatively recent standard permits you to establish a direct digital connection which tends be faster than the HSCSD/GSM connection. This connection is typically billed per megabyte transferred rather than connection time. Some mobile phone providers require you to take a data subscription service in order to use GPRS.



Setting up the connection follows a similar procedure as setting up the Wifi connection, as described above. You need to select the “Dial-up – PPP IrDA”. You will require the following information:

Account Tab

Name	A name of your choosing to identify this connection
For a HSCSD/GSM connection:	
Username	Your identifier provided by your Internet Service Provider (ISP)
Password	The corresponding password, provided by your ISP
Phone	The access phone number of your ISP
For a GPRS connection:	
Username	Contact your telephone service provider for a user name required by the GPRS service. If this service does not require a user name, type 123 .
Password	Contact your telephone service provider for a password required by the GPRS service. If this service does not require a password, type 123 .
Phone	A phone code provide by your phone’s manufacturer (ex. *99# for some Nokia phones). You should find this in your phone manufacturer’s manual under GPRS activation or through your GPRS data service provider.

Modem tab

AT-dial	ATDT (dial tone) or ATDP (dial pulse) designate the dialing method. A mobile phone uses ATDT. (GSM connection)
Speed	If this parameter is available, set it to 115200 to match the PMA’s internal hardware configuration. (GSM connection)
Wait time	Allows the server this amount of time for the modem connection. (GSM connection)
Demand dialing	The connection can be dialed and disconnected automatically (e.g. when starting Opera™) or manually using the network connection icon on the Status bar . Attention: when you set this parameter to Auto on/off, you have to make the first connection manually.

Network tab

The standard setup is to use the automatic detection of routing and name servers (DNS). In case you are required to set any of these values, your ISP will provide this information.

18 Software & Other settings

18.1 Language

This setting lets you select the interface language of your PMA430. Options are: German, English (U.S. or U.K.), Spanish, French and Italian.

18.2 Security

This setting lets you choose a password, which any user will have to enter when turning on the device.

18.3 Appearance

Use this setting to stylize the windows, colors and fonts to your own liking.

18.4 Launcher

The tabs on your PMA430 are called launchers because you launch an application from them. You can change the background color or image for each tab to your own particular liking.

18.5 Date/Time

Here, you can set the current time, time zone and date and to select a time *format*.

The time is expressed in hours and minutes. Tap onto the value you want to change and use the arrows or the UP and DOWN controls to modify them.

To change the date, tap onto the black arrow on the right hand site of the date bar. This will open the calendar. (insert screen shot?). You can use the arrows to navigate the months and year, and tap onto the calendar to select a date.

The time format can be set to a 12 hour clock (0:00 to 12:59) or a 24 hour clock (0:00 to 23:59).

You can choose for the calendar to display Monday or Sunday as the first day of the week (menu next to “Week starts on”).

The date format can be set to M/D/Y, D.M.Y, Y-M-D or D/M/Y.

You can also access these parameters by tapping on the time itself in the system status bar on the bottom right of the screen. You should double check the time and date after a hardware reset and after rebooting.

18.6 Software Packages

Use this application to install or uninstall software packages. The .ipk extension is the standard extension for application programs for the PMA430. Although .ipk files developed for other devices might work on the PMA430, you should use .ipk files which have been specifically created for the PMA430 to be sure that the program works correctly.

If you copy a .ipk installation file (created specifically for the PMA430) to your **Documents** folder, then you can run this installer, select “Install from **Documents**” and choose the file to install. Alternatively, you can just go to the **Documents** folder and double-click on an .ipk file and it will launch this **Software Packages** application. Once the program has been installed, the PMA430 will notify you that the procedure has been completed.

You might want to try the option “Install from Network”. Once this new service has been put into place, you will be able to download and install software packages over the Internet directly from your PMA430. Refer to the section on **Network** in the **Hardware settings** chapter for information on how to set up and start an internet connection.

18.7 Restart

This application allows you to perform a power down-reset of the PMA430 or a restart of the system software only. This might be needed if the system software has become corrupted and is no longer working properly. "Restart Qtopia" will just restart the system software, while "Reboot" will completely power down the PMA430, allowing a full restart of the whole operating system.

18.8 Application Services

This application allows you to associate applications with certain file types. That is to say, you tell your PMA430 which application to use to open files of the format. For example, if you have two or three applications that can display JPEG images, then this program lets you select which application will be launched when you double click on a JPEG image in the Documents folder.

18.9 Plug-in Manager

Warning!!! This program should be used with extreme care and only when you are familiar with Qtopia™ plug-ins. If you disable a plug-in, you could cause your machine to freeze and/or lose data or possibly continue running but degrade its performance. Therefore, we **strongly** recommend that you do not change any of these settings.

PART V

Qtopia™ Desktop Application



19 Installing & Using Qtopia™ Desktop

Qtopia™ Desktop is a personal information management (PIM) program developed by Trolltech for Windows® based computers. You can use it alone as a manager for the PIM data on your PMA430 or you can use it as a synchronization tool to synchronize your Microsoft® Outlook® information with your PMA430.

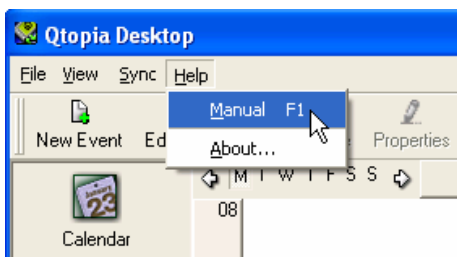
19.1 Installation

In the **Archos** folder you will find a folder called **/Qtopia_Desktop_Install**. Copy this folder to your desktop computer and run the installation program inside it. Once it is installed, it will add a 'connection' icon to the system tray of your PC. The icon shown here indicates that the PMA430 is not connected to the computer, and thus no synchronization can take place.



19.2 Usage

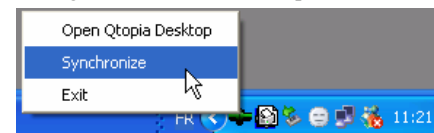
Once you connect your PMA430 to your computer, it will be automatically recognized by your Window® computer and the system tray will show the connection icon indicating that you can now synchronize your PMA430 with your desktop computer. You can either launch the Qtopia™ Desktop program itself to have access to the calendar, Todo list, and contact manager, or you can simply right click the icon in the system tray and select Sync. The data available through the Qtopia™ Desktop program will be synchronized with the data on you PMA430.



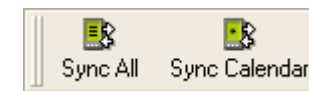
There is a complete On-line help which explains each aspect of the program.

19.3 Synchronizing with Microsoft® Outlook

By default, the setting to synchronize with Microsoft® Outlook is set. Thus, when you click on **Sync** from the system tray icon or **Sync All** from the Qtopia™ Desktop application, your PIM data will be synchronized between Outlook, Qtopia™ Desktop, and the PMA430. You can change settings for which data takes precedence in case of conflicts.

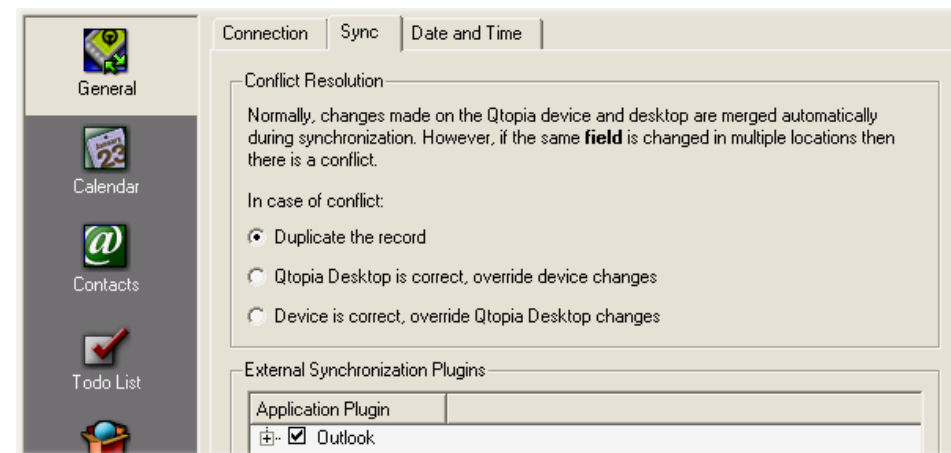


Quick Sync from the System Tray



Sync from the Qtopia™ Desktop Application

If you go to **Settings** in the **File** menu of Qtopia™ Desktop, you can uncheck the Outlook plug-in if you do not want synchronization with it. It will then just synchronize with the Qtopia™ Desktop program.



20 Technical Support

In case you should encounter any technical difficulties using your product, we suggest you go through these steps in order to resolve any issues as efficiently as possible:

- 1) Please remember that in addition to the printed USER GUIDE, there is the full MANUAL on the hard drive of your device. This manual included much more detail, and you will probably find the information you are looking for here. You might need to refer to several sections in order to identify the section which addresses the difficulty you are encountering. You might want to use the electronic copy of the manual and search for terms within it using Acrobat Reader.
- 2) Look at the Trouble shooting section at the back of your manual. In this section, we have included answers to some commonly asked questions.
- 3) Look at our Support section on the website (www.archos.com). Here, you will find Frequently Asked Questions (FAQ) for our different products, and there is a chance that somebody else has already asked your question.
- 4) If these steps did not help you in resolve your technical difficulty, you can always contact us either via email or by calling the helpline. Telephone support will be provided in the language of the countries listed below. For other countries, please use email technical support.

DO NOT USE phone or e-mail support for marketing and sales questions. These numbers are to aid those who have technical difficulties / malfunctions.

- For warranty and services purposes, keep your sales receipt for proof of purchase. The serial number for the AV 700 model can be found in the battery compartment.
- If technical support (Telephone or E-mail) determines that your product needs to be returned, please contact the place of purchase to have your product repaired or replaced (depending on problem type). Customers who purchased directly from the Archos website should fill out the RMA return request form on the website.

Telephone Support			
949-609-1400	(USA, Canada)	09-1745-6224	(Spain)
01 70 20 00 30	(France)	02-4827-1143	(Italy)
0207-949-0115	(UK)	020-50 40 510	(Netherlands)
069-6698-4714	(Germany)	01-601-5700	(Ireland)
Email Support			

techsupport.us@archos.com	English (United States and Canada customers)
techsupport.eu@archos.com	English or French (Europe and the rest of the planet)
techsupport.de@archos.com	German (Germany)

WWW.ARCHOS.COM

Worldwide Offices

United States & Canada

ARCHOS Technology
3 Goodyear – Unit A
Irvine, CA 92618 USA
Phone: 1 949-609-1483
Fax: 1 949-609-1414

Europe & Asia

ARCHOS S.A.
12, rue Ampère
91430 Igny
France
Phone: +33 (0) 169 33 169 0
Fax: +33 (0) 169 33 169 9

United Kingdom

ARCHOS (UK) Limited
3 Galileo Park
Mitchell Close
West Portway Andover
SP103XQ Andover
United Kingdom
Phone: +44 (0) 1264 366022
Fax: +44 (0) 1264 366626

Germany

ARCHOS Deutschland GmbH
Bredelaerstrasse 63
40474 Düsseldorf
Germany
Tel: +49 211 1520 384
Fax: +49 211 1520 349

21 Troubleshooting

21.1 USB Device Connection issues

Problem: I cannot get my PMA430 to be recognized by the computer.

Solutions:

- If using a USB hub, try connecting without using the hub (some hubs are not powered and may not work with the PMA430).
- If using a USB port in the front of your computer, try a USB port in the back. Front USB ports are often from non-powered hubs.
- Do not connect to a USB port repeated through a keyboard.
- If using a laptop computer and a docking station, try connecting without the docking station.
- If the Files Allocation Table (FAT) gets corrupted, the PMA430 may not show up in Windows XP for over one minute, and then it comes up as **local drive**. Use DOS Utility **ChkDsk** as shown below.
- Windows® XP may recognize the PMA430 hard disk but yet not assign a drive letter to it. Right click on **My Computer** and select **Manage**. Then select **Storage**, then **Disk Management**. Within this window you may see the hard drive and be able to assign a drive letter by right-clicking on the hard disk, and selecting the option **Change drive letter and paths...**

Problem: What do I do if I try to disconnect via the green arrow but keep getting “The device ‘Generic Volume’ cannot be stopped now. Try stopping the device again later.”

Answer: Shut off any program that might be accessing data on the PMA430, including Windows® Explorer. If this does not work, shut down all programs, wait 20 seconds, then try the green arrow one or two times again. If this does not work, you should shut down the computer and disconnect the USB cable once the computer is off.

21.2 Charging and Power issues

You do not need to fully discharge the batteries before recharging them.

Problem: A full battery charge does not last as long as the specifications suggest.

Answer: The specifications are under the condition that the screen backlight goes off after 30 seconds (for music) and the user does not access the machine, it just sits and plays. If you get significantly less time from a full charge, call our technical support hot-line.

21.3 PMA430 locks up (freezes operation) or Stops

Problem: The PMA430 locks-up. None of the buttons work.

Solution: Do not press any more buttons and do not touch the screen for 3 – 5 minutes. If you have a large file open in one of the applications or if multiple applications are simultaneously running, and the screen buttons were very quickly pressed, the PMA430 may not have be able to react quickly enough to all the inputs. Wait a few minutes then try to close each open application. If this does not work, try holding down on the ESC button for 3 seconds to shut off the PMA430 and then turn it back on. If it will not shut off, you will have to do a reboot. Take a pin or paper clip and press the reset button inside the pinhole on the bottom of the unit. The PMA430 will now do a complete system reboot when turned on. This will take a few minutes. You may have lost data in any open applications. Verify to make sure the time and date are correct after a full reboot.

21.4 File issues, corrupted data, formatting, and partitioning

Problem: On the PMA430, I find new file names and folder names that I never created or they have strange gibberish names.

Answer: Most likely, the PMA430’s file allocation table (FAT) has been corrupted. This could have been due to the PMA430 shutting down (due to low battery power) while reading or writing to your computer via the USB connection. To fix a corrupted FAT problem, you should use the Error Checking utility or the Check Disk utility explained at the end of this section. Attention: Windows and Macintosh often write extra files to the hard disk such as **finder.def** or **System volume info**. These are normal and will not harm the PMA430.

Problem: I have been using my PMA430 to transfer files back and forth between different computers. Will defragmenting the PMA430 hard disk do any harm to it?

Answer: Defragmenting the PMA430 hard disk may be useful after having transferred many files to and from the PMA430. It is never harmful to use the defragmenter on the PMA430. Make sure no other program is running while using the Windows® defragmenter utility. Make sure you power the PMA430 with the external power adapter during this procedure.

Problem: I want to reformat the PMA430's hard disk.

Answer: You can do this, but it will erase ALL of the data on your PMA430. Sometimes this may be necessary if your FAT (File Allocation Table) becomes so corrupted that nothing seems to fix your file problems. First, as explained below, you should run ScanDisk or the DOS chkdsk (Check Disk) program to try to fix your problem. If this doesn't fix your problem and you are sure you must reformat the PMA430 hard disk, then see the system recover chapter for details.

Windows® ME Running Scan-Disk (Error Checking)

- Quit all running applications.
- Properly connect the PMA430 to your computer as explained in the chapter on connecting to your computer.
- Make sure external AC adapter is powering the PMA430.
- Right click on the PMA430 hard disk in Windows® Explorer and select Properties.
- Select the Tools option and run the Error checking program
- Make sure you check the box to **automatically fix errors**.
- Be patient, this may take a while. Windows® may ask you to restart the computer to make certain Windows files available. This is OK, click on **Yes**.

Windows®XP & 2000 Running Check Disk Utility (Chkdsk)

If you still have problems with the file system on your PMA430 you can try to fix it using the DOS utility, check disk (chkdsk). Do the following;

- Make sure external AC adapter is powering the PMA430.
- Quit all running applications.
- Properly connect the PMA430 to your computer as explained in the disconnection chapter.
- Wait patiently (up to 5 minutes) for Windows XP to show the **local drive** as mounted.
- Open a DOS window. Programs > Accessories > Command Prompt.
- At the prompt, type **chkdsk e: /f** . Use **e:** or **f:** or whatever drive letter is representing your PMA430. The /f argument tells the program to automatically fix errors.
- Be patient, this may take a while.
- When it is finished, exit the DOS Window and properly disconnect the PMA430 from your computer.

Technical Specifications	
Storage Capacity	30 Gigabytes*
Computer Interface	Device: USB 2.0 High Speed (compatible USB 1.1) Host: USB 2.0 Full Speed (compatible USB 1.1)
Image Playback	JPG, BMP, PNG, GIF images (Photo application)
Audio Playback	Stereo MP3 decoding 30-320 kb/s CBR & VBR, WMA, WAV. WMA copy protected (Windows Media Player 9 PDDRM)
Audio Recording	Stereo WAV (PCM) & MP3 CBR low (96kb/s@32kHz), medium (128kb/s@44.1kHz), high (192kb/s@48kHz)
Video Playback	Video Track: MPEG-4 Simple Profile compliant .AVI format up to 720x576 pixels @ 25fps. Sound track: MP3 or WAV (IMA-ADPCM).
Screen	3.5" color TFT LCD touch screen (QVGA) 320x240 pixels 262K colors
Television output	Video output switchable PAL (EU) or NTSC (US) standard
Playback Autonomy***	Up to 9 hours music, up to 4 hours video
Scalability	Free Operating System updates downloadable from ARCHOS website
Infrared Port	Beams standard, Palm OS, and quoted ascii.
Wifi Port	IEEE 802.11b compatible, maximum bit rate 10Mb/s
AV Connections	Audio/video Multi-connect jack. Includes connections for audio/video IN and audio/video OUT.
Power source	Removable Lithium-Ion battery pack Use only the ARCHOS supplied charger/adaptor.
Physical Dimensions	127 x 79 x 21 mm (5.0 x 3.1 x .83 inches) 270 grams (9.6 oz.)
Temperature Range	5 °C to 35 °C running ; -20 °C to 45 °C storage
System Requirements	PC: Windows® ME, 2000, XP Mac: OS X (10.2.4) or higher

*1 GB = 1 billion bytes, formatted capacity is less.

**Files compatible with MPEG4-SP AVI only; MPEG-4: ISO/IEC standard by Moving Picture Experts Group; AVI: audio/video file container by Microsoft®. DivX: has not been certified by DivX, Inc., may not read all DivX® 4.0 & 5.0 files; does not read DivX® 3.11 & 6.0 files.

***Depending on LCD brightness, use and access (start, stop, pause, etc.)

22 Legal

22.1 Warranty and Limited Liability

This product is sold with a limited warranty and specific remedies are available to the original purchaser in the event the product fails to conform to the limited warranty. Manufacturer's liability may be further limited in accordance with its sales contract.

In general, the manufacturer shall not be responsible for product damages caused by natural disasters, fire, static discharge, misuse, abuse, neglect, improper handling or installation, unauthorized repair, alteration or accident. In no event shall the manufacturer be liable for loss of data stored on disk media.

MANUFACTURER SHALL NOT BE LIABLE FOR ANY SPECIAL, INCIDENTAL OR CONSEQUENTIAL DAMAGES. EVEN IF INFORMED OF THE POSSIBILITY THEREOF IN ADVANCE.

ARCHOS licensor(s) makes no warranties, express or implied, including, without limitation, the implied warranties of merchantability and fitness for a particular purpose, regarding the licensed materials. ARCHOS 's licensor(s) does not warrant, guarantee or make any representations regarding the use or the results of the use of the licensed materials in terms of its correctness, accuracy, reliability, correctness or otherwise. The entire risk as to the results and performance of the licensed materials is assumed by you. The exclusion of implied warranties is not permitted by some jurisdictions. The above exclusion may not apply to you.

In no event will ARCHOS 's licensor(s), and their directors, officers, employees or agents (collectively ARCHOS ' licensor) be liable to you for any consequential, incidental or indirect damages (including damages for loss of business profits, business interruption, loss of business information, and the like) arising out of the use of inability to use the licensed materials even if ARCHOS ' licensor has been advised of the possibility of such damages. Because some jurisdiction do not allow the exclusion or limitation of liability for consequential or incidental damages, the above limitations may not apply to you.

Please see your sales contract for a complete statement of warranty rights, remedies and limitation of liability.

Furthermore, warranty does not apply to:

1. Damages or problems resulting from misuse, abuse, accident, alteration or incorrect electrical current or voltage.
2. Any product tampered-with or damaged warranty seal or serial number label.
3. Any product without a warranty or serial number label.
4. Batteries and any consumable items delivered with or in the equipment.

22.2 Warnings and Safety Instructions

CAUTION

To prevent risks of electric shock, this unit must only be opened by qualified service personnel.

Power off and disconnect the power supply cable before opening the unit.

WARNING

To prevent fire or shock hazard, do not expose the unit to rain or moisture.

Use of this product is for personal use only. Copying CDs or loading music, video, or picture files for sale or other business purposes is or may be a violation of copyright law. Copyrighted materials, works of art, and/or presentations may require authorization to be fully or partially recorded. Please be aware of all such applicable laws concerning the recording and use of such for your country and jurisdiction.

22.3 FCC Compliance Statement

This equipment has been tested and found to comply with limits for a Class B digital device, pursuant to Part 15 of the FCC Rules. These limits are designed to provide reasonable protection against harmful interference in a residential installation. This equipment generates, uses and can radiate radio frequency energy and, if not installed and used in accordance with instructions, may cause harmful interference to radio communications. However, there is no guarantee that interference will not occur in a particular installation. If this equipment does cause harmful interference to radio or television reception, which can be determined by turning the equipment off and on, the user is encouraged to try to correct the interference by one or more of the following measures:

- Reorient or relocate the receiving antenna.
- Increase the separation between the equipment and receiver.
- Connect the equipment into an outlet on a circuit different from that to which the receiver is connected.
- Consult the dealer or an experienced radio/TV technician for help.

CAUTION : Modifications not authorized by the manufacturer may void users authority to operate this device.

FCC Part 15 - Operation is subject to the following two conditions:

1. This device may not cause harmful interference;
2. This device must accept any interference received including interference that may cause undesired operation.

22.4 Electrostatic Discharge

Note: During electrostatic discharge, the product may be malfunctioning. Reset it to return it normal operation. The PMA430 reset is actuated by pressing the button inside the reset pinhole found on the bottom of the device. Use a paper-clip to access this button for example. The unit will power off. Restart normally. The device will go through a complete system reboot which may take several minutes.

22.5 Avoiding Hearing Damage

This product respects the current regulations for limiting the output volume of consumer audio devices to a safe level. By listening to your device with headphones or earbuds at high volumes, you run the risk of permanent damage to your ears. Even if you get used to listening at high volumes and it seems normal to you, you still risk the possibility of damaging your hearing. Reduce the volume of your device to a reasonable level to avoid permanent hearing damage. If you hear ringing in your ears, reduce the volume or shut off your device. This device has been tested with the ARCHOS supplied earphones. Other manufactures earphones may produces volume levels higher or lower than the ARCHOS delivered earphones.

22.6 Copyright Notice

Copyright ARCHOS© 2005 All rights reserved.

This document may not, in whole or part, be copied, photocopied, reproduced, translated or reduced to any electronic medium or machine-readable form without prior consent, in writing, from ARCHOS . All brands and products names are registered trademarks and the property of their respective owners. Specifications are subject to change without notification. Errors and omissions accepted. Images and illustrations may not always match contents. Copyright ® ARCHOS . All rights reserved.

***Disclaimer of warranty:** to the extent allowed by applicable law, representations and warranties of non-infringement of copyrights or other intellectual property rights resulting from the use of the product under conditions other than as here above specified, are hereby excluded.*

22.7 LCD Pixel Policy

The LCD screen on your ARCHOS PMA430 unit has been manufactured to rigorous standards to provide a high quality viewing experience. Nevertheless, your LCD screen may have slight imperfections. This is not particular to the ARCHOS screen, but to all devices which have LCD screens regardless of the original manufacturer of the LCD. Each product vendor guarantees that his screen will contain no more than a certain number of defective pixels. Each screen pixel contains three dot elements (Red, Blue, and Green). One or all of the dots in a given pixel may be stuck on or stuck off. A single dot stuck off is the least noticeable. All three dots of a pixel stuck on is the most noticeable. ARCHOS guarantees that its PMA430 screen will have no more than 1 defective pixel (regardless if that pixel has one or more defective dots). This means that during the period of guarantee for your country or jurisdiction, if the screen on your product has two or more defective pixels, ARCHOS will repair or replace your PMA430 product at its cost. Thus, one defective pixel is not grounds for replacement or repair of the product.

23 Index

Address book

Contacts	13.3
ARCLibrary	
Playing music	4.1
The ARCLibrary	4.2
ARCLibrary update	
The ARCLibrary	4.2
Available disc space	
System info	14.5

Backup

Linux®, Qtopia™ and the PMA430 File System	1.5
System Recovery	3
Battery autonomy and consumption	
Hardware settings - Browsing the Web or Using E-mail	17
Light & Power	17.2
Connecting/Disconnecting the PMA430 to/from your PC	2

Bookmarks

The Resume Functions	4.5
The Resume Functions	8.1

Buttons not working

Music Application - Button controls while a song is playing	4
---	---

Codecs

Installing the PC Software – MPEG-4 Codec	12.1
Installing the PC Software - MP3 Sound Codec	12.1

Command line

Terminal	14.8
----------	------

Compression

Putting Music onto your PMA430	4.3
Video Application	8
Creating MPEG4 Video Files with your Computer	12

Connecting a USB device to your PMA

Transferring pictures to your PMA430	7.1
--------------------------------------	-----

Date and time

Overview of different screen areas	1.2
Calendar	13.2
Clock	14.1
Date/Time	18.5

Deleting files

File browser Application	11
--------------------------	----

External speaker off/on

Music Application - Button controls while a song is playing	4
---	---

File system

Linux®, Qtopia™ and the PMA430 File System	1.5
--	-----

File types

Application Services	18.8
----------------------	------

Files: Moving or copying files

Putting Music onto your PMA430 - Synchronizing Music from Windows Media® Player 10 to the PMA430	4.3
Transferring pictures to your PMA430	7.1
File browser Application	11

Files: Music deleted from your device

Putting Music onto your PMA430 - Synchronizing Music from Windows Media® Player 10 to the PMA430	4.3
--	-----

Find a particular song (Scan)

Music Application - The Music application window	4
--	---

Free disc space

System info	14.5
-------------	------

Graphical user interface

Overview of different screen areas	1.2
Application tabs	1.3

Lock

Music Application - Button controls while a song is playing	4
---	---

Memory low/critical

Application tabs - Documents	1.3
------------------------------	-----

MPEG4 Translator

Creating MPEG4 Video Files with your Computer	12
---	----

Music Browser

Playing music	4.1
The ARCLibrary	4.2

Music deleted/missing from your device

Putting Music onto your PMA430 - Synchronizing Music from Windows Media® Player 10 to the PMA430	4.3
--	-----

Music files sorted by categories

Playing music	4.1
---------------	-----

Music lists (Playlists)		Updating the Operating System - Step	4
Playing music	4.1	Reset the PMA430 and set the time and date	
The ARCLibrary	4.2		1.6
New Playlist does not display		Hardware Reset	1.9
The ARCLibrary	4.2	Restart	18.7
Operating system		Screen not working	
Linux®, Qtopia™ and the PMA430 File		Music Application - Button controls while a	
System	1.5	song is playing	4
System Recovery	3	Show songs added to device	
Operating system version		The ARCLibrary	4.2
System info	14.5	Shuffle	
PDF files		Music Application - The Music application	
Pdf Viewer	4.9	window	4
Play songs randomly (Shuffle)		Software Installation	
Music Application - The Music application		Software Packages	18.6
window	4	Sound	
Playing only certain songs		Playing music	4.1
Playing music	4.1	Play Music through your Home Stereo	4.4
The ARCLibrary	4.2	Customizing the Equalizer	4.6
Playing songs in a specific order (Playlist)		VideoCorder Application - Manual	
Playing music	4.1	Recording	9
The ARCLibrary	4.2	Creating MPEG4 Video Files with your	
Playlists		Computer	12
Playing music	4.1	Time and date	
The ARCLibrary	4.2	Overview of different screen types	1.2
PlaysForSure		Calendar	13.2
Putting Music onto your PMA430	4.3	Clock	14.1
Programmed recordings		Date/Time	18.5
VideoCorder Application	9	To do lists	
Set-up for scheduled video recordings	10	Today	13.1
Protected files		Calendar	13.2
Music - Using iTunes™ with your PMA430		Todo List	13.4
Copy Protection	9.2	Touch screen problems	
Recovery		Music Application - Button controls while a	
Linux®, Qtopia™ and the PMA430 File		song is playing	4
System	1.5	Recalibrate	17.3
System Recovery	3	Restart	18.7
Reminders		Video playback settings	
Today	13.1	TV Output	16.1
Calendar	13.2	Video quality	
Todo List	13.4	Customizing the Equalizer	4.6
Removing files		VideoCorder Application - Manual	
File browser Application	11	Recording	9
Renaming files or folders		Creating MPEG4 Video Files with your	
File browser Application	11	Computer	12
Restarting your device		Audio-Visual Settings	16

Video recording		Using MPEG4 Translator	12.2
VideoCorder Application - Manual		Windows Media Player	
Recording	9	Putting Music onto your PMA430 -	
VideoCorder Settings	16.2	Synchronizing Music from Windows	
Virtual Dub		Media® Player 10 to the PMA430	4.3
Creating MPEG4 Video Files with your		Writing text or notes	
Computer - PC Tools	12	Text Editor	14.4
Installing the PC Software - Virtual Dub™	12.1		