



English

# WEATHER & ALARM CLOCK WITH DIGITAL PHOTO FRAME

*Ref.: CPN1.8*



**- USER MANUAL -**

### **Special suggestion**

Attention: For your and others' security, please don't handle and watch this album when driving car. A few light spots or dark spots may be on the LCD, this is a very general phenomenon in such matrix reveals technology ,not showing defectively or breaking down, please don't attempt to repair by oneself, This display is made up of a lot of accurate electronic elements, , it may be damaged if took down or repack.. If break down, please close the power immediately, contact local distributor or notify our company.

### **Foreword**

Digital photo frame, it is not only meaning extremely exquisite dense and reminiscence appearance design, portable and optional function, but also changing the singleness showing way that is showing static state in traditional photo frame. Have directly adopted reading and revealing the working way of various data store car. It avoids wearing and losing with the dynamic digital photo. Thanking you for choosing our company's digital multimedia album, in order to make it convenience for you to use this album skill fully as soon as possible, we allocate the user's manual with exhaustive content for you, please read this manual first before using.

Our arrangement content to the user's manual is overall and easily understood. We think it is reliable that it is correct that the information was offered in the manual and try hard to avoid the artificial fault, but the mistake that will unavoidably be found in printing. if causes some careless mistakes, please forgive more

### **Safe and maintaining**

In order to guarantee your digital multimedia album long term administration and the performance is unlikely to decline, please consider the following factors while setting:

1. please read this manual, follow it and operate the album correctly to conform to warning and instruction in proving in details.
2. while using for the first time, please read this manual in detail.
3. Please don't use the album beside water or other liquid. Avoiding water and other liquid is splashed and spread on the album.
4. Do not have heavy pressure or big striking to such album. Too big pressure or striking might lead to album which part is damage or trouble, please put the album on the smooth and steady surface, the album should to be severed so as not to drop or shake.
- 5.it must be cherished that LCD display screen is the important component of the digital multimedia album, forbid knocking and pushing
- 6.before cleaning the album, please shut down the unit firstly. Please use the neatness soft cloth to clean. Please don't use spraying, pharmaceutical or strong cleanser.

### **LCD screen maintenance**

LCD screen is the accurate device that needs to be took care of. Please pay attention to the following warning items:

1. if you need to clean LCD screen, please use the soft tissue to slowly polish LCD surface.
2. don't directly put hand or other sharp article to the surface of the unit. Do not directly gush out the cleanser on the screen surface.
3. do not put articles above the album or press the outer cover of album, otherwise it may cause LCD to break.

# **CATALOGUE**

## **SAFE AND MAINTAINING**

### **I. KNOW THE PLAYER**

- **Appearance and button**
- **Battery**

### **II. FUNCTION SUMMARY**

- **Picture browsing**

### **III. FUNCTION INTRODUCTION OF MENU**

- **Enter menus**

**1、USB connect**

**2、Slide Show**

**3、Clock**

**4、Auto Off**

**5、Contrast**

**6、Delete**

**7、Exit**

### **IV/ THE OPERATION INSTRUCTIONS OF PICTURE CONVERSION**

### **TOOL**

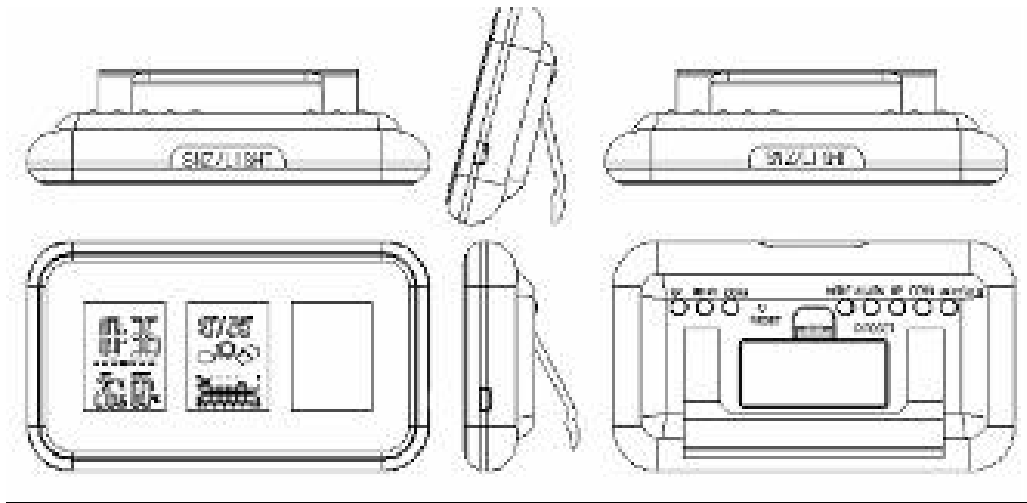
### **V/ PRODUCT SPECIFICATION**

### **VI/ ACCESSORIES**

### **VII/ WEATHER MULTI-FUNCTION LCD CLOCK**

## I. KNOW THE PLAYER

### Appearance and button



### The definition of button function

MENU key: long Press this key can start shut down and control the function

UP key: Previous one, soon retreat

DOWN key: The next one, draw back

USB interface: Used in digital album charging and picture download.

RESET key: afresh setup the digital album when it can not play

### Battery

This machine adopts the lithium electric battery, adopt USB to supply power while charging, and require the power to accord with the national standard.

The question which was caused by the non-standard power produces has nothing to do with the developer.

- When the battery is nearly used up, the digital album Reveals" 

" at this moment, you should charge the battery in time.

- This machine supports USB to supply power, it can play even without having battery

## II. FUNCTION SUMMARY

- The digital album function

Support some format's conversion, download and preview such as BMP, JPG, etc.

- Many kinds of utility multi function such as clock, luminance regulate, automatic switch etc.

- It would show many kinds of all right scenes.

Attention: JPG, BMP, can not to be previewed until it pass conversion tool attached

Picture browsing



- You can enter various menus through pressing Mode key. The menu includes: USB Connect, Slide Show, Clock, Auto Off, Contrast, Delete, Exit.
- Long Press MENU key to start the machine. Up-down keys browse the picture. (See Picture)
- You Can set up manually browse and automatically browse .automatically Browse can directly look at the picture. Please consult showing mode.
- When there is no file in the photo frame, it will display when the machine (see picture) start



### **III/ FUNCTION INTRODUCTION OF MENU**

Press menu key, enter into menu setting (see picture)



Pressing up or down key can up or down choosing, when you have made your choice .press menu key to detail setting.

#### **Different function mode and basic operation.**

##### **1. USB Connect (see picture)**

USB Connection Steps: First connect machine to the computer wit USB cable, and then short press MENU key to enter the menu, in the short press MENU key to enter the USB connection confirmed.

USB can be recharged to the frame and power supply and through the computer to download and upload converted by the conversion tools



## 2. Slide Show (see picture)



The operation of Slide Show

Choose Slide Show: press menu key to enter, press up or down to choose, press MENU confirms.

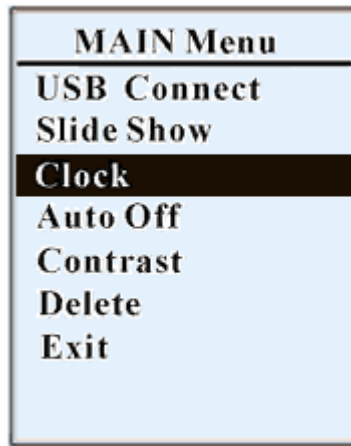
Choose on: press menu to open the Auto Slide, enter MENU to adjust time according to up or down. Press menu to draw back.

Choose off: press menu to close Auto Slide.

## 3. Clock set (see picture)

Digital Clock      Analog Clock      Set Clock

Calendar          Cancel



Operate the Clock

Choose clock. Press menu to enter and press up or down to choose digital clock, analog clock, set clock, calendar, cancel, press menu confirm.

Time Set:



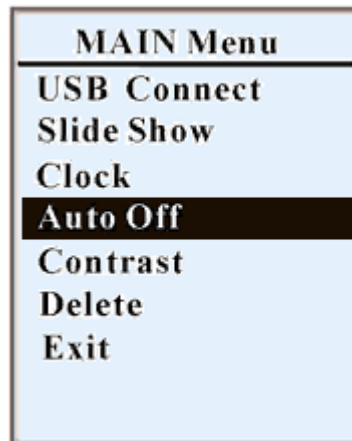
Time set operation:

Choose digital clock press MENU enter and press up or down to adjust time.

Press menu key to withdraw after confirm.



#### 4. Auto Off (see picture)



The operation of Auto Off:

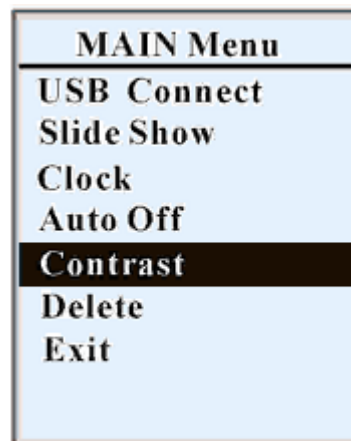
Choose Auto off: press menu key to enter, press up or down to choose

Choose on to set auto off time: press menu to enter, according up or down to adjust time. Press menu to draw back.

Choose off to close auto off function.

Press MENU after confirm

#### 5. Contrast set (see picture)

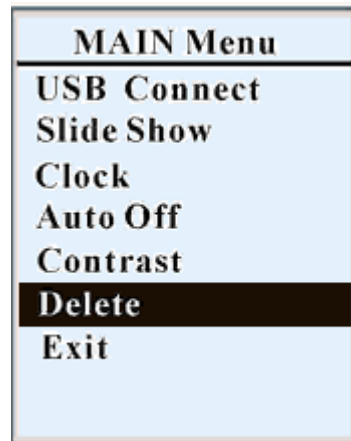


Contrast set operation:

Choose Contrast. Press menu to enter and press up or down to adjust the time, the range is 01-06

Press MENU after confirm

## 6. Delete (see picture)

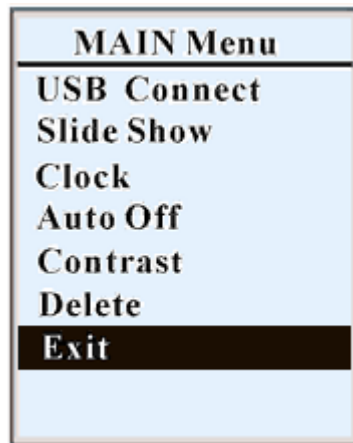


Delete operation:

To delete an image, use UP, DOWN key to turn and display the face image, and then press the MENU button, select "Delete" menu item at this time to determine whether the pop-up prompts to remove the screen prompts if there within 3 seconds Press the MENU button again, it shows the picture is deleted immediately and automatically return to the picture mode, showing a picture of; screen prompts if no button 3 seconds on the cancellation of removal;

To delete all the picture and select "Remove" menu item, press MENU key to enter, press the UP, DOWN button to select "Delete All" menu item, then press the MENU button at this time to determine whether or not to remove the pop-up prompt screen appears if prompted 3 seconds, press the MENU button again, it shows the picture is deleted immediately and automatically return to the picture mode; screen prompts if no button 3 seconds, on the abolition of the deletion operation, return to the main menu.

## 7. Exit (see picture)



Choose Exit, press MENU to withdraw.

## IV/ THE OPERATION INSTRUCTIONS OF PICTURE CONVERSION TOOL

The following types of tools used to convert the below picture format to JPEG, BMP for the item.

Connect USD cable to the computer and then switch to the USB connection frame status

AutoRun own this product feature, if the PC has AutoRun, connected PC will automatically pop-up picture download tools, download the update picture.

Remark:

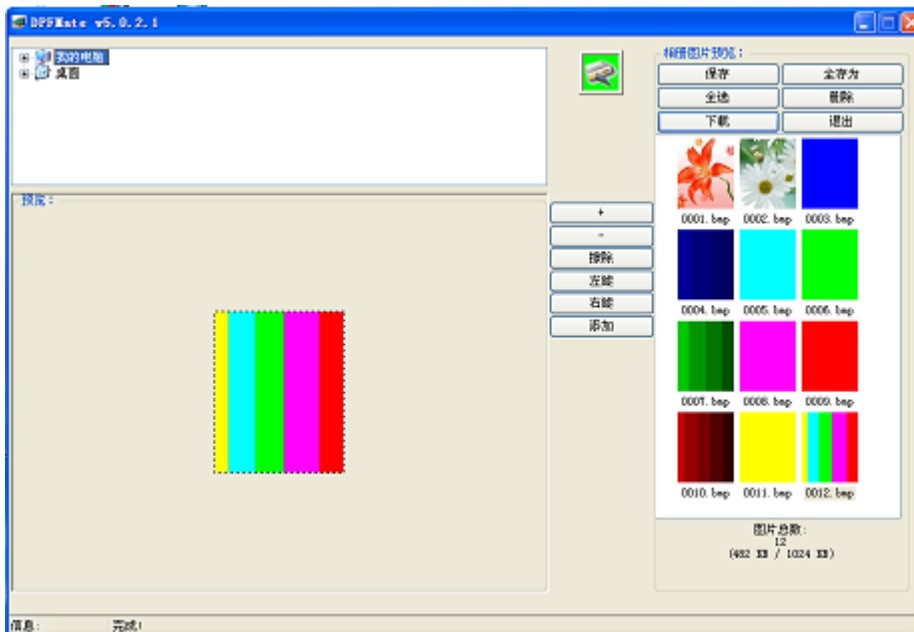
This product supports almost all Mac systems, like Mac OS X v10.0, Mac OS X v10.3 "Panther", Mac OS X v10.5 "Leopard" However; this product can not open Macintosh systems AUTORUN

When connect USD cable to the computer and then switch to the USB connection frame status, on the right foot of the Computer task bar will appear



to show well connection.

AutoRun own this product feature, if the PC has AutoRun, connected PC will automatically pop-up picture download tools like below pictures:



- : Zoom In       : Save As       : Save All
- : Zoom Out       : Select All       : Delete
- : Clear Rect       : Download to Synchronize       : Exit
- : Rotate Left
- : Rotate Right
- : Add Photo

Pay special attention to the normal from the USB function.

End load picture, click "OK" and close the picture to load a tool window, click the USB icon in the right corner of the computer to close it safely.

## **V/ PRODUCT SPECIFICATIONS**

SIZE	140 x 80 x 25mm
WEIGHT	168g (without batteries)
LCD	1.8 CSTN-LCD
POWER	3.7V Built-in Battery
	At least four hours playing time
PICTURE FORMAT	JPG、 BMP

## **VI/ ACCESSORIES**

- USB cable
- Adaptor
- Driver in device
- Manual

## **VII/ WEATHER MULTI-FUNCTION LCD CLOCK**

### **FEATURES:**

Measuring temperature range: -9.9°C~50°C (0°F-122°F)

Measuring humidity range: 20%~90%

Resolution: 1°C

Display: Max/min temperature and humidity records

Calendar: 2000-2099 year

**BATTERY: 2PCS x AAA 1,5V (NO INCLUDED)**

## **OPERATION:**

Press Alarm one time to view the alarm time

## **SETTING THE CALENDAR**

Press MODE hold for 3 seconds to enter the calendar setting mode.

The year digits are blinking and can be set by pressing UP or DOWN for setting year.

Press MODE again:

The month digits are blinking and can be set by pressing UP or DOWN for setting month.

Press MODE again:

The day digits are blinking and can be set by pressing UP or DOWN for setting day.

Press MODE again:

The hour digits are blinking and can be set by pressing UP or DOWN for setting hour.

Press MODE again:

The minute digits are blinking and can be set by pressing UP or DOWN for setting minute.

## **SETTING THE ALARM**

Press ALARM to view the alarm time

Press ALARM hold for 3 seconds to enter the alarm setting mode.

The hour digits are blinking and can be set by pressing UP or DOWN for setting hour.

Press MODE again:

The minute digits are blinking and can be set by pressing UP or DOWN for setting minute.

### **ALARM ON/OFF**

Press Up to turn alarm on/off

### **MAX/MIN**

Press MAX/MIN to view MAX temperature and humidity record.

Press MAX/MIN again to view MIN temperature and humidity record.

### **12/24 FORMAT HOUR**

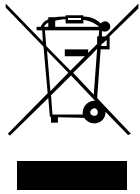
At the time mode, Press UP for switch 12 or 24 format hour time display.

### **TEMPERATURE DISPLAYS FORMAT**

Press DOWN to switch °C/°F display.

### **SNOOZE**

In alarm to press SNZ for snooze mode.



The symbol opposite indicates that the electric and electronic components are the subject of a selective collection, it represents a dustbin on wheels barred of a cross. The electric and electronic products can contain substances having negative effects on the environment and health. Worn, they should not be thrown with domestic waste but to be imperatively recovered in the selective collections: dump, associations of social economy and interdependent.

The selection of waste decreases the potential effects on the environment and human health due to the substances dangerous which can compose certain components electric and electronic.

Take an active part: to remove you not from the apparatuses with domestic waste!



## Déclaration de Conformité (DoC) EMC

Nous, Société Inovalley, 9 rue Rapporteur, 95310 Saint-Ouen l'Aumone, déclarons sous notre seule responsabilité que le produit:

Marque : Inovalley

Nom commercial : Réveil avec météo et cadre photo numérique

Type: CPN1.8 - Modèle: EM9912

auquel se réfère cette déclaration est conforme aux exigences essentielles et aux autres dispositions de la directive pour la Compatibilité Electro-Magnétique EMC 2004/108/CE qui lui sont applicables.

Le produit est en conformité avec les normes et/ou autres documents normatifs suivants :

Réveil :

EN 55022 :2006+A1 : 2007

EN 61000-3-2 :2006

EN 55024 : 1998+A1 :2001+A2 :2003

EN 61000-3-3 :1995+A1 :2001+A2 :2005

Adaptateur secteur :

EN 55022 :2006

EN 55024 :1998+A1 :2001A2 :2003

EN 60950-1 :2006

Lieu et date d'édition

St Ouen l'Aumône, le 6 Juillet 2009

Le fabricant  
INOVALLEY

  
J.L. THIRY (PDG)