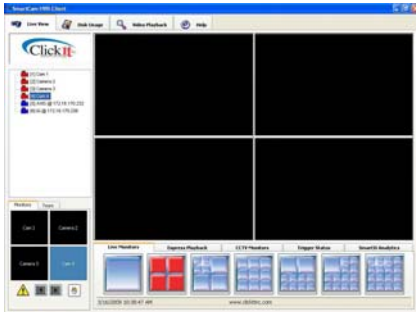


LIVE VIEW

Live View is available to view the current video being captured for all cameras.



From the Live View double click a multi-view window to display that camera in single view. (Double click for a second time to return to multi-view.)

Right click on the screen to view a menu of additional features (full screen, view a single camera, change a camera, display camera name or display motion and activity).

EXPRESS PLAYBACK

The Express Playback feature is a one click instant review of video.

The following will demonstrate how to perform a search.

1. From the Live Video, click the **Express Playback** tab



2. Playback of video will be automatic, ranging from 5 minutes to 1 hour of video
3. Select **Play Reverse** to play from the most recent time backwards
4. Change the speed of playback using the speed control drop down
5. Select **Show Live View** to display a single screen of live video during playback
6. Click the **Live Monitors** tab to exit and return to live video

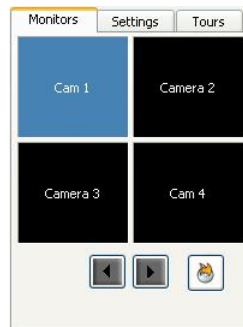
LIVE MONITORS

The Live Monitors tab displays a graphical view of the monitor configurations. Use this tab to select the number of monitors displayed in Live View.



MONITORS

The Monitors tab displays a graphical view of the monitor configuration and screen placement. The position of each camera corresponds to the position in the video window.



To change a camera being viewed:

1. On the Monitors Tab, click the box that corresponds to the position of the camera (the box will display in **blue**).
 - Alternately you can click in the video window for the position.
2. Go to the camera listing and click the camera to be placed in that position.

Xi EZ-Export



1. Insert a CD
2. Click the **Xi EZ-Export** button to perform a one-click export
3. Click **OK** when complete

(The destination, duration and cameras exported will be based on the Xi EZ-Export system configuration.)

PERFORM A SEARCH

The following will demonstrate how to perform a search.

1. Click the **Video Playback** tab (at the top of the screen)
2. Select the camera(s) to review (all are checked by default)
3. Select the camera layout



4. Enter the *Search Options*

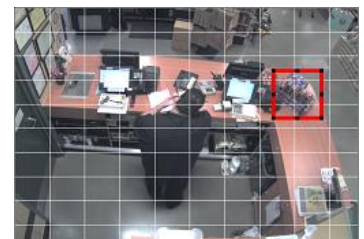


5. Click the **Search** button
6. Video will automatically start playing

SMART SEARCH

The following will demonstrate how to enable Smart Search during video playback.

1. Select the camera and 1x1 layout
2. Perform a search
3. Click on the **Smart Search** Tab
4. Define your search zone



5. Click the **Play** button

BURN A CD

The following will demonstrate how to export to CD using the **Advanced** option.



Save Current Image



Export Video Clip

Using **CD (Advanced)** option

1. Perform a search and click **Pause**
2. Select export option and click **Next**
3. Select **Export to CD** and click **Next**
4. *For video clip only*, choose Selected Row or Entire Results and click **Next**
(*For entire results, select the cameras*)
5. Select **Create new image** and click **Next**
6. Click **Yes** to delete the items under the CDIMAGE folder
7. Type the **File Name** and click **Next**
8. Click **Ok** at the confirmation

To add additional images or video

9. Click the **Cancel** button
10. Click the **Yes** button to cancel
11. Search for your image or file
12. Select export option and click **Next**
13. Select **Export to CD** and click **Next**
14. *For video clip only*, choose Selected Row or Entire Results and click **Next**
(*For entire results, select the cameras*)
15. Select **Add/Edit existing image** and click **Next**
16. Type the **File Name** and click **Next**
17. Click **Ok** at the confirmation
18. Repeat 9-17 for more images/videos

To burn to CD

19. Select **Burn Image** and click **Next**
20. Click **Finish** to launch CD burning
21. Type the CD name (optional) and click **Next**
22. Wait while the files are exported
23. Click **Finish** upon completion

The following will demonstrate how to export to CD using the **Standard** option.



Export Video Clip

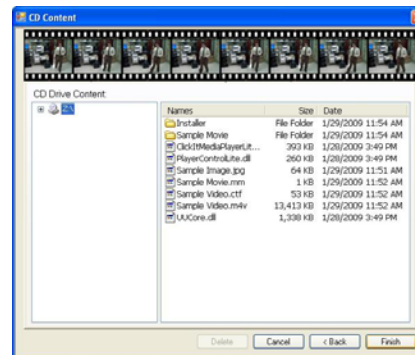
Using **CD (Standard)** option

1. Perform a search and click **Pause**
2. Select the Export Video Clip
3. Select CD/DVD Standard
4. Type the **File Name** and click **OK**
5. Select to export a single camera or all cameras
6. Click **Start**
7. Wait while the files are exported
8. Click **Ok** at the confirmation

SHOW CD CONTENTS

The following will demonstrate how to verify the contents of the CD from the Video Playback screen.

1. Insert the CD
2. Select the export option (Save Current Image or Export Video Clip using CD Advanced)
3. Select **Show CD Contents** and click **Next**




4. Double click the file to view the image (.jpg) or video file (.m4v or .mm).

Note: Alternately you may use the Show CD Contents option from the System Settings tab.



ARCHIVE

Use Archive to save selected video records to an archive file. Video files in this area are not erased during automated cleanup. The following will demonstrate how to archive video from the Video Playback screen.

1. Perform a search and click **Pause**
2. Click the **Archive**  button
3. Click **Yes** to archive the selected video
4. Click **OK** at the confirmation

ONLINE HELP

All SmartCamXi HVR units are equipped with help guides, available at the click of the mouse. To access these help documents Click on the "Help" Tab at any point while using the system.



SmartCamXi User Manual: The user manual provides step-by-step instructions in PDF format.

SmartCamXi Tutorial: View the video tutorial snippets, which quickly explain each feature on the system (Note: Speakers are needed for audio).

ABOUT THE QUICK REFERENCE

Information in this document has been carefully checked for accuracy; however, no guarantee is given to the correctness of the contents. The information in this document is subject to change without notice.

No part of this document may be reproduced or transmitted in any form by any means, electronic, mechanical, photocopying, recording or otherwise, without the prior written permission of ClickIt Inc.