

Welcome to SSM

Simple Stock Manager is living application which is frequently improved and updated. To avoid annoying automatic Web update, it is your responsibility to visit a www.simple-stock-manager.com and decide to update. This document describes version 2.01 of May 2013 but mostly fits later releases.

1. Introduction.....	2
2. Getting started	2
3. Products tab	7
4. Suppliers tab.....	10
5. Logs tab	12
6. Inventory tab	14
7. Advanced features.....	16

1. Introduction

Efficient

SSL is stock control software designed to be immediately operational and easy to use for any kind of user, in any kind of organization, in any country.

Simple

Unlike most "stock management" option of ERP or MES systems, the main concern of SSM is not to deliver data to the management or the accountant level (although it does it very well) but to give to the people in the workshop a real fast and efficient tool to save time, improve comfort and reliability.

Powerful

Based on Microsoft .Net standards and SQL data base, SSM is very flexible and really open to any customization or enhancements. These improvements, mostly made on demand for specific needs, are of two types:

- New functions, new features or interfaces changes adapted to your working habits
- New implementations to integrate your information system or enterprise network.

2. Getting started

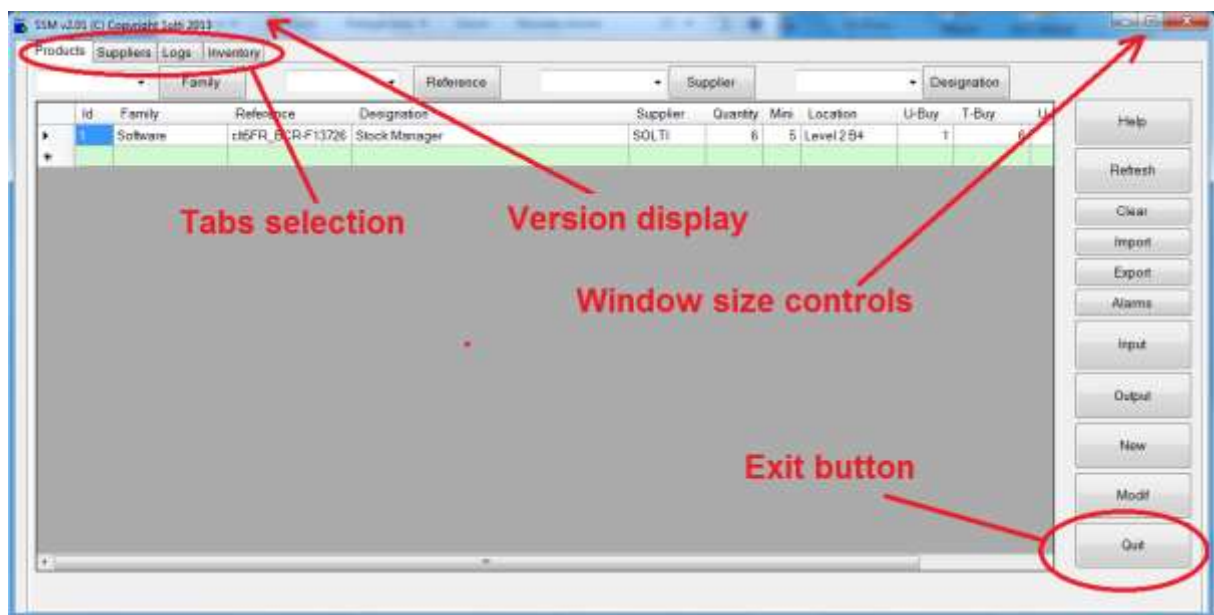
Installation

The great quality of SMM is its simplicity: the installation consists of copying a directory containing a set of less than 10 files, anywhere on a writable part of your disk. The delivery package is a zip file downloaded from www.simple-stock-manager.com. The installation procedure is described in a document and a video on this site. People familiar with windows explorer will not even need to read any document to install.

For advanced topics concerning installation, such as sharing data base or web access, the best is to call us as there are many architecture are possible.

User interface

The user interface (called main window) contains four tabs. It behaves like any standard Window XP-7 application.

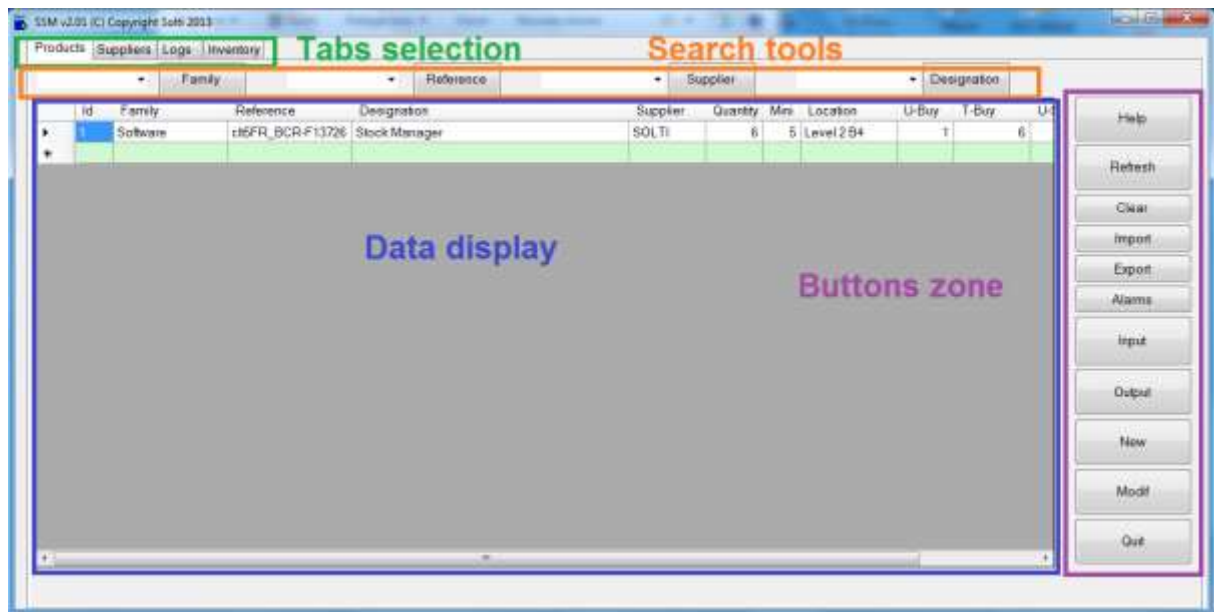


Each tab displays data array called gridview by Microsoft.

Screen zones

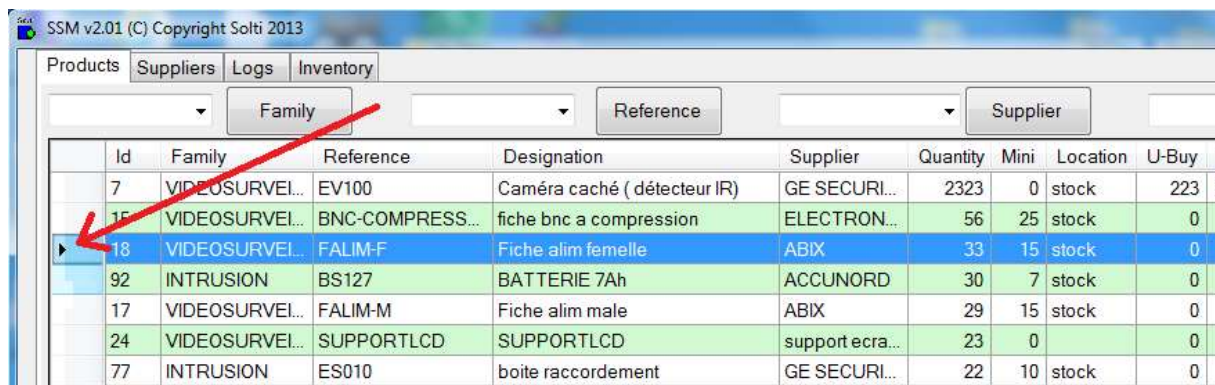
The main window is divided into different zones that are respected for all tabs.

- Tabs selection is used to switch tabs, at any time.
- Search tools zone depends of the current tab and are optional.
- Data display zone contains data according to the current tab.
- The button zone contains all possible actions on specified data.



Item selection

To execute an action, you sometimes need to select a line first. This is done clicking with the left mouse button on the left end of a line.



Each column of the grid can be sized at your will by "sliding the border" with the left button of the mouse pressed on the column header separation.

SSM v2.01 (C) Copyright Solti 2013

Products Suppliers Logs Inventory

Family

	Id	Family	Reference	Designation
▶	60	INTRUSION	AS270	sirène in
	43	INTRUSION	ATS1110	clavier
	44	INTRUSION	ATS1115	clavier

Items order

Each column can be ordered at your will by clicking on the column header. This enables you to sort products by family, Reference, Quantities or any other parameter.

reference

Supplier

	Supplier	Quantity	Mini	Location	U-Buy	T-Buy	U-Se
ecteur IR)	GE SECURI...	2323	0	stock	223	518029	
ession	ELECTRON...	56	25	stock	0	0	
	ABIX	33	15	stock	0	0	
	ACCUNORD	30	7	stock	0	0	
	ABIX	29	15	stock	0	0	
	support ecran	23	0		0	0	
it	GE SECURI...	22	10	stock	0	0	
	GRUSON	19	5	stock	0	0	
it	GE SECURI...	16	10	stock	0	0	

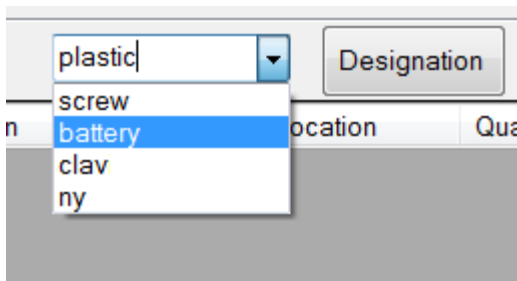
Items search

To ease most frequent operations such as searching by Family, Reference, Supplier or Designation, there are search boxes on each tab. To search an item which contains "screw" in its designation, you just need to type "screw" in the designation search box, type enter or click the button and you will get all products that have "screw" in their designation.



The Refresh button is used to restore the display of all items in your data base.

For later searches, the 10 last used keywords are stored in a list accessed with the right arrow.



3. Products tab

Display

The first tab is for daily use such as inserting or extracting products from the stock or just checking quantities. It is named "products tab".

For SSM, a product is an item that has a reference. All product of the same reference will be counted as "product quantity" of the specified reference.

Id	Family	Reference	Designation	Supplier	Quantity	Mns	Location	U-Buy	T-Buy	U-Sell	T-Sell
1	VIDEOSURVEIL	GRUCAM-B	GRUCAM-B		0	0		0	0	0	0
2	VIDEOSURVEIL	GRUCAM-G	caméra grille 700L	GRUSON	19	5	stock	0	0	0	0
3	VIDEOSURVEIL	XVCIR600	caméra 600L	EURODIS	1	0	stock	0	0	0	0
4	VIDEOSURVEIL	CC49REHB	caméra 600L	EURODIS	1	0	stock	23	23	0	0
5	VIDEOSURVEIL	VWRD4V9CNLED	Caméra mini dôme 540L	EURODIS	1	0	stock	0	0	0	0
6	VIDEOSURVEIL	ATS CD3307R	caméra mini dôme	AASSET	1	0	stock	0	0	0	0
7	VIDEOSURVEIL	EV100	Caméra caché (détecteur IR)	GE SECUR	2323	0	stock	223	518029	0	0
8	VIDEOSURVEIL	LTC455	caméra Bosch 540L	EURODIS	1	0	stock	0	0	0	0
9	VIDEOSURVEIL	VH439	Transmetteur vidéo	AASSET	1	0	stock	0	0	0	0
10	VIDEOSURVEIL	VPIR37C	Caméra caché (détecteur IR)	EURODIS	1	0	stock	0	0	0	0
11	VIDEOSURVEIL	A3-01000	caméra mini dôme	EURODIS	1	0	stock	0	0	0	0
12	VIDEOSURVEIL	50916	Filtre passif	ABX	1	0	stock	0	0	0	0
13	VIDEOSURVEIL	TTP111VL	Transmetteur vidéo	AASSET	5	0	stock	0	0	0	0
14	VIDEOSURVEIL	BNC	fiche bnc	ELECTRON	25	15	stock	0	0	0	0
15	VIDEOSURVEIL	BNC-COMPRESS	fiche bnc a compression	ELECTRON	56	25	stock	0	0	0	0
16	VIDEOSURVEIL	BNC-T	Fiche T bnc	ELECTRON	4	3	stock	0	0	0	0
17	VIDEOSURVEIL	FALIM-M	Fiche alim male	ABX	29	15	stock	0	0	0	0
18	VIDEOSURVEIL	FALIM-F	Fiche alim femelle	ABX	33	15	stock	0	0	0	0
19	VIDEOSURVEIL	SC02120R	Caméra tube samsung	ADI-GARDI	1	0	stock	0	0	0	0
20	VIDEOSURVEIL	SCCC7455P	dôme motorisé samsung	AASSET	1	0	stock	0	0	0	0
21	VIDEOSURVEIL	LCD15	moniteur vidéo 15	EURODIS	1	0	stock	0	0	0	0

Products tab buttons

Button	Action
Help	Opens a web browser on SSM web pages.
Refresh	Restore data from data base in the original form, after sorting data or to make sure that a networked base is updated.
Clear	Deletes all product from data base, after user confirmation.
Import	Imports data from an excel csv file. Ti be used when migrating

	your existing stock to SSM
Export	Send displayed data to an excel file, respecting the displayed order
Alarms	Show only products under minimum
Input	Insert selected product in stock
Output	Extract selected product form stock
New	Creates a new product
Modif	Edit the selected line
Quit	Exits application

Product definition

Before anything, let us see what “products” means for SSM, as terms are very important to avoid misunderstanding when working under stress. Here are the definitions of product parameters:

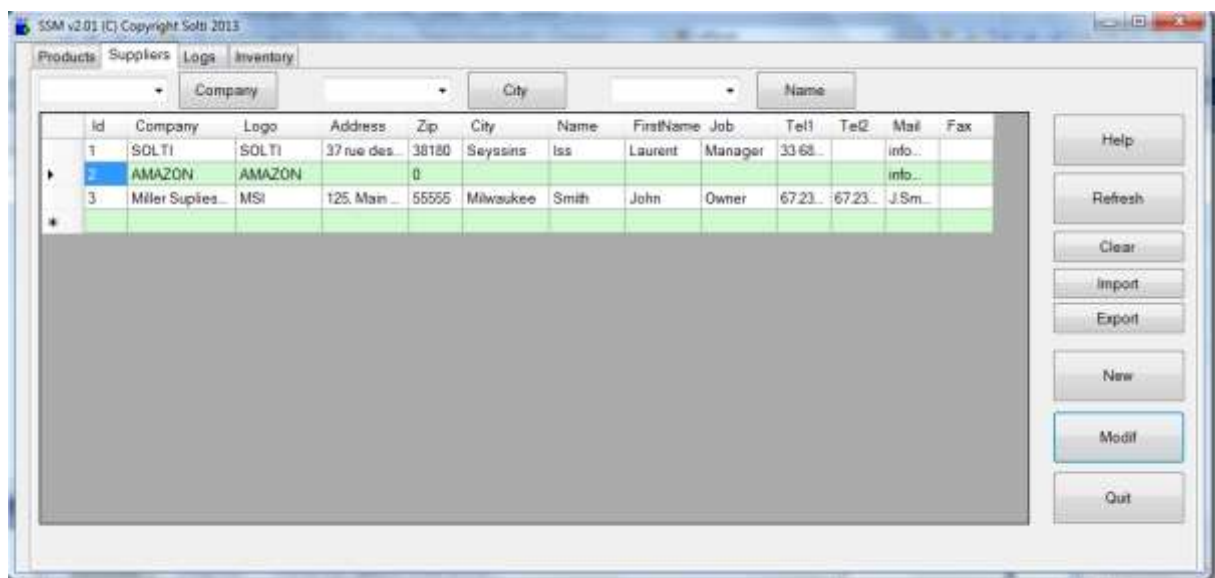
Field	Format	Description
Id	Integer	Identifier. Each product has a unique identifier given automatically by the data base system. It cannot be changed. You normally never have to change it. Usually, they are given in chronological order.
Family	String	To facilitate sorting, each product can have a family name associated. There are no pre-defined rules about how to choose family names. No specific processing is done on the family name as the application uses Id and references.
Reference	String	Each product has one reference, each reference corresponds to only one product. This reference can be the bar code value or any unique string. Choosing a good reference naming system is the key of user comfort and system reliability
Designation	String	This field is not used (except for search requests) by the system and should be used to clarify the reference by aspects details or user warnings.
Supplier	String	The supplier name is taken from the supplier table which is detailed in a different tab. You are not obliged to use this field.
Quantity	Decimal	The number of actual products of the same reference in stock. This number can be anything, even a negative value as it is your

		responsibility to check conformity with the actual stock.
Mini	Decimal	This is the minimum quantity you always want to keep in stock. When the real quantity is lower, the quantity will appear in red, as for ID 14 in the samples screen. Mini are specified when creating a new product.
Location	String	This field is not used by the system, you can write anything that will help users to find or sort products. Location is specified when creating a new product.
U-Buy	Decimal	This field contains the unitary cost of the product, when inserted to stock. You are not obliged to use buying costs in SSM. Using CUMP feature, this value is an average value of actual stock.
T-Buy	Decimal	This is the sum (total) of U-Buy for specified product and quantities.
U-Sell		This field contains the unitary price of the product. You are not obliged to use buying costs in SSM. Using CUMP feature, this value is an average value of actual stock.
T-Sell	Decimal	This is the sum (total) of U-Sell for specified product and quantities.

4. Suppliers tab

1. Display

The suppliers tab is used to keep track of supplier's information, for user comfort.



Suppliers tab buttons

Button	Action
Help	Opens a web browser on SSM web pages.
Refresh	Restore data from data base in the original form, after sorting data or to make sure that a networked base is updated.
Clear	Deletes all suppliers from data base, after user confirmation.
Import	Imports data from an excel csv file
Export	Send displayed data to an excel file
New	Creates a new supplier
Modif	Edit the selected line
Quit	Exits application

Supplier definition

Field	Format	Description
Id	Integer	Identifier. Each product has a unique identifier given automatically by the data base system. It cannot be changed. You normally never have to change it. Usually, they are given in chronological order.
Company	String	The full name of the company
Logo	String	The short usual name, if any
Address	String	To send letters and return material
Zip	Integer	Zip code
City	String	Location
Name	String	Name of your main contact
FirstName	String	First name of your main contact
Job	String	Main contact's function
Mail1	String	Main contact mail
Mail2	String	Secondary mail
Fax	String	Fax

5. Logs tab

Display

The logs tab is used to keep track of any changes performed on the stock.

id	Dates	Type	Comment	Family	ID_prod	Reference	Designation	Supplier	Quantity	Movement	Mini	Location
109	28/05/2013	Input	Urgent deliv.	VIDEOSUR	14	BNC	fiche bnc		-7	0	15	stock
108	28/05/2013	Before		VIDEOSUR	14	BNC	fiche bnc	ELECTR.	-19	12	15	stock
107	28/05/2013	Before		VIDEOSUR	14	BNC	fiche bnc	ELECTR.	-19	5	15	stock
106	28/05/2013	Input	Delivery Th.	VIDEOSUR	6	ATS CD3	caméra m.		89	0	0	stock
105	28/05/2013	Before		VIDEOSUR	6	ATS CD3	caméra m.		-11	100	0	stock
104	28/05/2013	Output	Smith & Co	VIDEOSUR	6	ATS CD3	caméra m.		-11	0	0	stock
103	28/05/2013	Before		VIDEOSUR	6	ATS CD3	caméra m.	AASSET	1	-12	0	stock
102	28/05/2013	Output	Smith & Co	VIDEOSUR	4	CC49RE	camera 6		98	0	0	stock
101	28/05/2013	Before		VIDEOSUR	4	CC49RE	camera 6		101	-3	0	stock
100	28/05/2013	Input	Standard M.	VIDEOSUR	15	BNC-COM	fiche bnc		76	0	25	stock
99	28/05/2013	Before		VIDEOSUR	15	BNC-COM	fiche bnc	ELECTR.	56	20	25	stock
98	28/05/2013	Input	Standard M.	VIDEOSUR	12	50916	Filtre passif		151	0	0	stock
97	28/05/2013	Before		VIDEOSUR	12	50916	Filtre passif	ABOX	1	150	0	stock
96	28/05/2013	Input	Standard M.	VIDEOSUR	9	VH439	Transmett.		1	0	0	stock
95	28/05/2013	Before		VIDEOSUR	9	VH439	Transmett.	AASSET	1	0	0	stock
94	28/05/2013	Input	Standard M.	VIDEOSUR	7	EV100	Caméra c.		2373	0	0	stock
93	28/05/2013	Before		VIDEOSUR	7	EV100	Caméra c.	GE SECU	2323	50	0	stock
92	28/05/2013	Input	Standard M.	VIDEOSUR	4	CC49RE	camera 6		101	0	0	stock
91	28/05/2013	Before		VIDEOSUR	4	CC49RE	camera 6	EUROOIS	1	100	0	stock
90	24/05/2013	New	asdsqdsq	CONTROL	193	BAQ35T12	1223232323		0	0	0	stock

Log tab buttons

Button	Action
Help	Opens a web browser on SSM web pages.
Refresh	Restore data from data base in the original form, after sorting data or to make sure that a networked base is updated.
Clear	Deletes all logs from data base, after user confirmation.
Export	Send displayed data to an excel file
Modif	Edit the selected line
Quit	Exits application

Log definition

Field	Format	Description
Id	Integer	Identifier. Each product has a unique identifier given automatically by the data base system. It cannot be changed. You normally never have to change it. Usually, they are given in chronological order.
Dates	String	
Type	String	Before = as before movement After = after movement Input = products introduced to stock Output = products extracted from stock Modif = product modified
Comment	String	The comment that has been entered (or not)
Family	Integer	Product family
Id_prod	Integer	Product ID
Reference	String	Product reference
Designation	String	Product designation
Supplier	String	Product supplier
Quantity	Decimal	Product quantity in stock
Movement	Decimal	Quantity moved
Mini	Decimal	Product minimum
Location	String	Location
U-buy	Decimal	Unitary buying price
U-sell	Decimal	Unitary selling price

6. Inventory tab

Display

The inventory tab is mostly independent of the usual stock management. It is dedicated to inventory operation, performed on specific occasions to check that the theoretical stock, in the products tab, really fits what can be seen in the warehouse. To make this check, this specific tab enables the following operation:

- Fill a list of known products with theoretical quantities
- Enable the user to add at will the actual quantities
- Display differences
- Update date into stock panel only quantities that have been checked

Id	Family	Reference	Designation	Location	Quantity	Real	Difference
22	VIDEOSURVEILLAN.	EV600	ordinateur 600VA	stock	2	2	0
23	VIDEOSURVEILLAN.	SMT1922P	moniteur vidéo 19"	stock	1	2	1
24	VIDEOSURVEILLAN.	SUPPORTLCD	SUPPORT LCD	stock	23	23	0
25	VIDEOSURVEILLAN.	QNAF-4	enregistreur vidéo QNAF	stock	1	-1	-2
26	VIDEOSURVEILLAN.	MM1103	caméra axis	stock	5	5	0
27	VIDEOSURVEILLAN.	DS2CD783	mini dôme HK IP	stock	2	-1	-3
28	VIDEOSURVEILLAN.	SNC-DH160	caméra ip sony	stock	1	-1	-2
29	VIDEOSURVEILLAN.	DS7204	enregistreur HK 4 voies	stock	1	5	4
30	VIDEOSURVEILLAN.	DS7304	enregistreur HK 4 voies	stock	1	3	2
31	VIDEOSURVEILLAN.	600VR4004	enregistreur geovox 4 voies	stock	1	3	2
32	VIDEOSURVEILLAN.	VICON-8	enregistreur vicon 8 voies	stock	1	3	2
40	VIDEOSURVEILLAN.	HB70X	caméra 300L	stock	1	1	0
41	VIDEOSURVEILLAN.	HB72X	caméra 530L	stock	1	-1	-2
42	VIDEOSURVEILLAN.	180H6ECRAN	écran vga	stock	1	-1	-2
43	INTRUSION	ATS1110	clavier	stock	0	-1	-1
44	INTRUSION	ATS1115	clavier	stock	0	-1	-1
45	INTRUSION	ATS1110A	clavier ATS ADVANCED (vert.)	stock	1	-1	-2
46	INTRUSION	ATS1135	clavier ATS ADVANCED (hor.)	stock	0	-1	-1
47	INTRUSION	VE1012	Détecteur volumétrique	stock	4	-1	-5
48	INTRUSION	ATS2102	centrale ats	stock	1	-1	-2
49	INTRUSION	ATS2699	carte mère ats 2102	stock	1	-1	-2

Inventory definition

In the inventory list, some information from all products of the stock tab is duplicated, completed by two columns specific to inventory.

Field	Format	Description
Id	Integer	Product identifier

Quantity	Decimal	Theoretical quantity in stock, from product tab
Real	Decimal	Actual quantity checked by user
Difference	Decimal	Automatically updated difference. Colored in red if actual stock is lower than theoretical, yellow if actual is over, not colored if equal.

Inventory tab buttons

Button	Action
Help	Opens a web browser on SSM web pages.
Refresh	Restore data from data base in the original form, after sorting data or to make sure that a networked base is updated.
Clear	Deletes all inventory data, after user confirmation.
Export	Send displayed data to an excel file
Save	Update stock quantities according to user actual quantities
Save	Update stock according to user real/actual quantities
New	Initialize the inventory product list from stock information's. Make sure previous data have been saved.
Quit	Exits application

7. Advanced features

As SSM is an open application based on standards such as Microsoft .Net, Access, SQL, Excel, there are many possibilities of installing, using and customizing it to fit your requirements, your information system or your network. You will find in the description of the parameters of June 2013 some ideas. Please contact us for more information.

Parameters

SSM parameters are stored in the text file SSM.ini. All parameters are grouped under the title [divers] called section. These parameters are described here after, default values are in strong:

[Divers]

Parameter	Role
English=1	Force english langage, wich is normally recognized from windows country.
English=0	Force french langage, wich is normally recognized from windows country.
Facturation=1	Enables billing dates
Facturation=0	Removes billing dates
Inventaire=1	Shows Inventory tab
Inventaire=0	Do not show Inventory tab
CUMP=1	Enables average unitary stock values
CUMP=0	Uses fixed prices
Base	Enables networking. Contact us for more details.
VirguleExcel=1	Solve some decimal coding issues when required

Your contact:

Mail: info@solti.fr

Site: www.simple-stock-manager.com