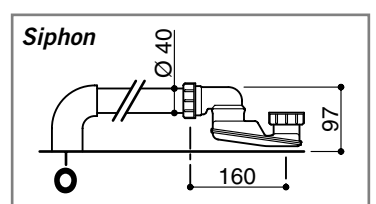


Measurements in mm.

- C** - Hot water connection for 1/2" tap fittings
- F** - Cold water connection for tap fittings 1/2"
- O** - Connection for drainage pipe recessed in floor 1 1/2"
- CA** - Electrical connection for Hydromassage IPX4 (box with cable press PG 13.5)

N.B. Installation must take place once floors and walls are completed.



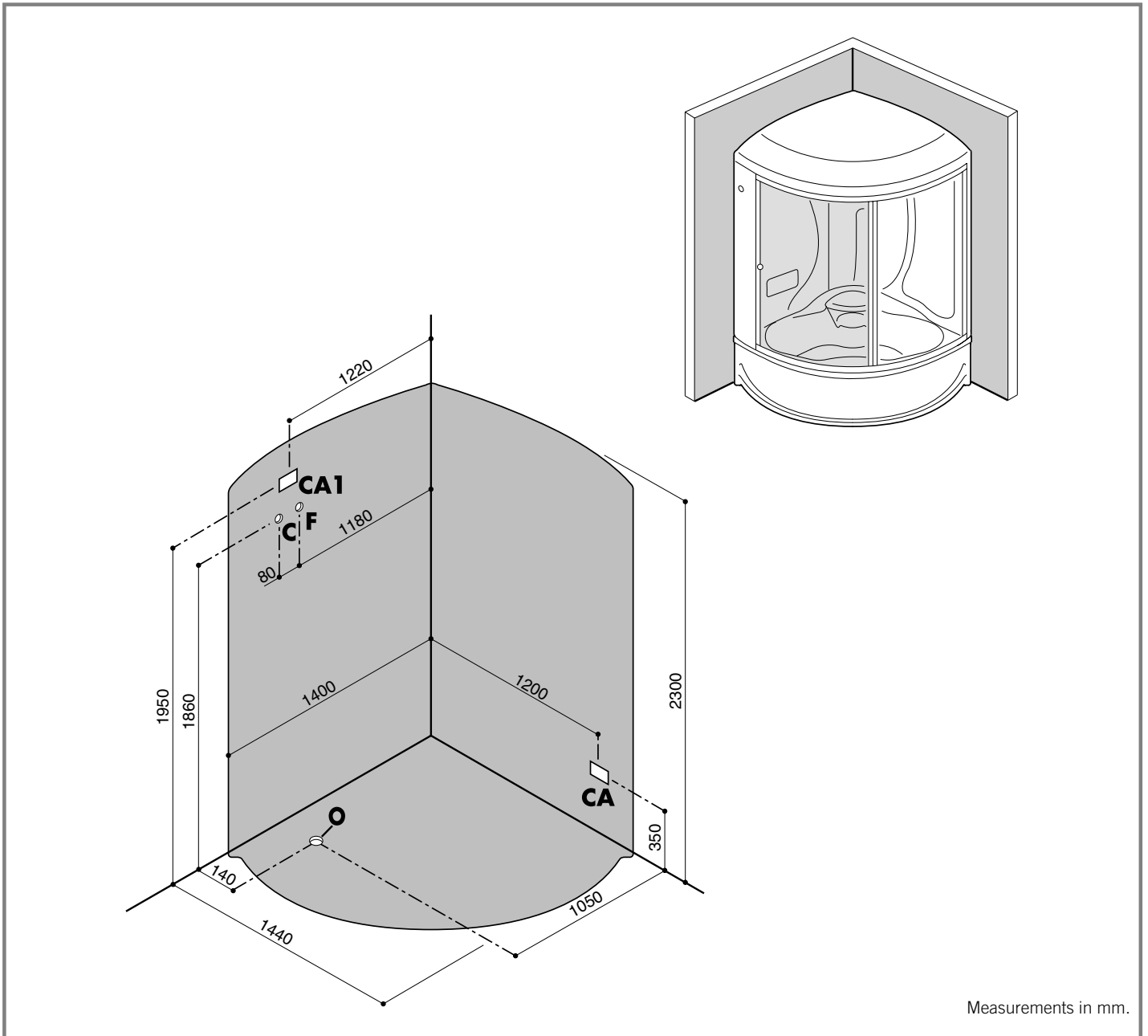
The electrical installation must comply with the safety regulations for bathroom installation, as described in the enclosed user's manual.

ART. 252 M					HYDRAULIC CHARACTERISTICS								ELECTRICAL CHARACTERISTICS ⁽²⁾				
Net Weight Kg.	Water Content ⁽¹⁾ lt.	Floor Load Kg/m ²	Delivery Weight Kg.	Delivery Volume m ³	Hydromassage			Multifunctions					Supply	Drain Conn.	Whirlpool Art.	Electropump Kw	Installed Power Kw
					Vers. No. Jets	Water Capacity l/min.	Air Capacity l/min.	Vert. Jets	Foot Jets	Back Jets	Capacity l/min	Min.Max. Pressure					
172	245	269	283	3	Top 8	400 l/min.	280 l/min.	6	2	3	9 ÷ 16	2 ÷ 5 bar	1/2"	1 1/2"	2WTX28	0,9	1,35

(1) - At overflow level

(2) - Before connecting the appliance, make sure that the voltage indicated on the rating plate is the same as that of the electric mains.

The information and characteristics shown do not bind Teuco Guzzini srl who reserves the right to make any modifications it retains necessary without any prior warning or notice of replacement.

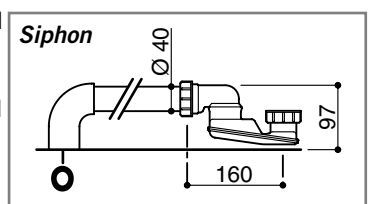


Measurements in mm.

- C** - Hot water connection for 1/2" tap fittings
- F** - Cold water connection for tap fittings and sauna 1/2" tap fittings
- O** - Connection for drainage pipe recessed in floor 1 1/2"
- CA** - Electrical connection for Hydromassage IPX5 (box with cable press PG 13,5)
- CA1** - Electrical connection for sauna and Multifunctions IPX4 (box with cable press PG 21)

N.B. Installation must take place once floors and walls are completed.

The room in which the sauna is to be installed should be at least 240 cm high for service and maintenance purposes.



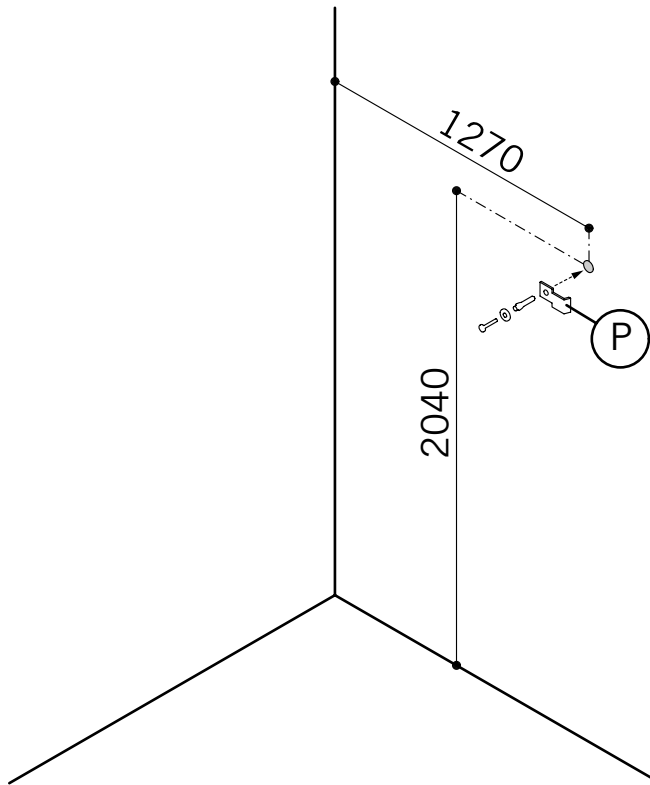
Electric connections must be effected in accordance with safety regulations for bathroom installation as described in the enclosed instruction booklet.

ART. 252 S - 252 E					HYDRAULIC CHARACTERISTICS									ELECTRICAL CHARACTERISTICS (2)						
Net Weight Kg.	Water Content ⁽¹⁾ lt.	Floor Load Kg/m ²	Delivery Weight Kg.	Delivery Volume m ³	Hydromassage			Multifunctions						Supply	Drain Conn.	Whirlpool		Sauna		Multifunctions
					Vers. No. Jets	Water Capacity	Air Capacity	Vert. Jets	Foot Jets	Cent. Sh.He.	Back Jets	Capacity l/min	Min.Max. Pressure			Art.	Kw	Art.	Kw Min. Max	
206	245	287	319	3	Top 8	400 l/min.	280 l/min.	6	2	1	3	9 ÷ 16	2 ÷ 5 bar	1/2"	1 1/2"	2WTX28	1,35	5MTX18	2,4+5	-
																	5MTX18	2,4+5	0,05	

(1) - Overflow level.

(2) - Before connecting the appliance, make sure that the voltage indicated on the rating plate is the same as that of the electric mains! The information and characteristics shown do not bind Teuco Guzzini srl who reserves the right to make any modifications it retains necessary without any prior warning or notice of replacement.

1



All screws and accessories which are necessary for installation are in the appropriate box

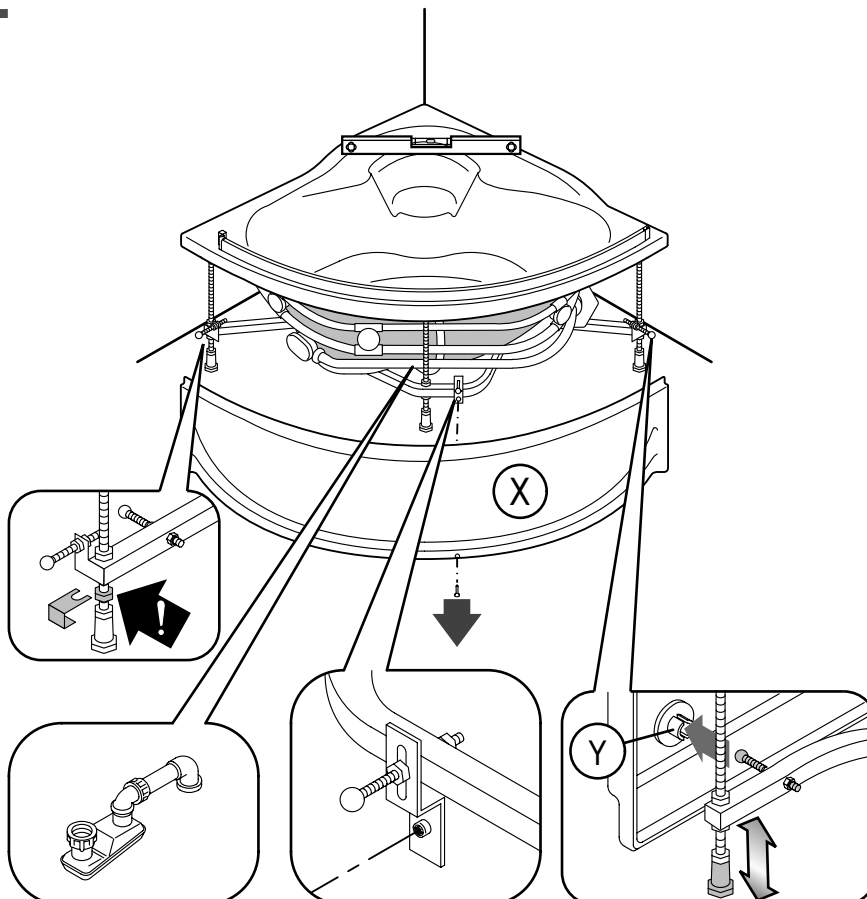
Bag (A) screws for steps
1 - 3 - 3a - 3b - 3c

PREPARING THE WALL FOR INSTALLATION

Drill the holes in the wall to fasten the Hydroshower to the wall as indicated in the diagram.

Fasten the small bracket (P) to the wall using a screw and fischer.

2



POSITIONING THE BATHTUB

Remove the screw indicated by the arrow in order to remove the front panel.

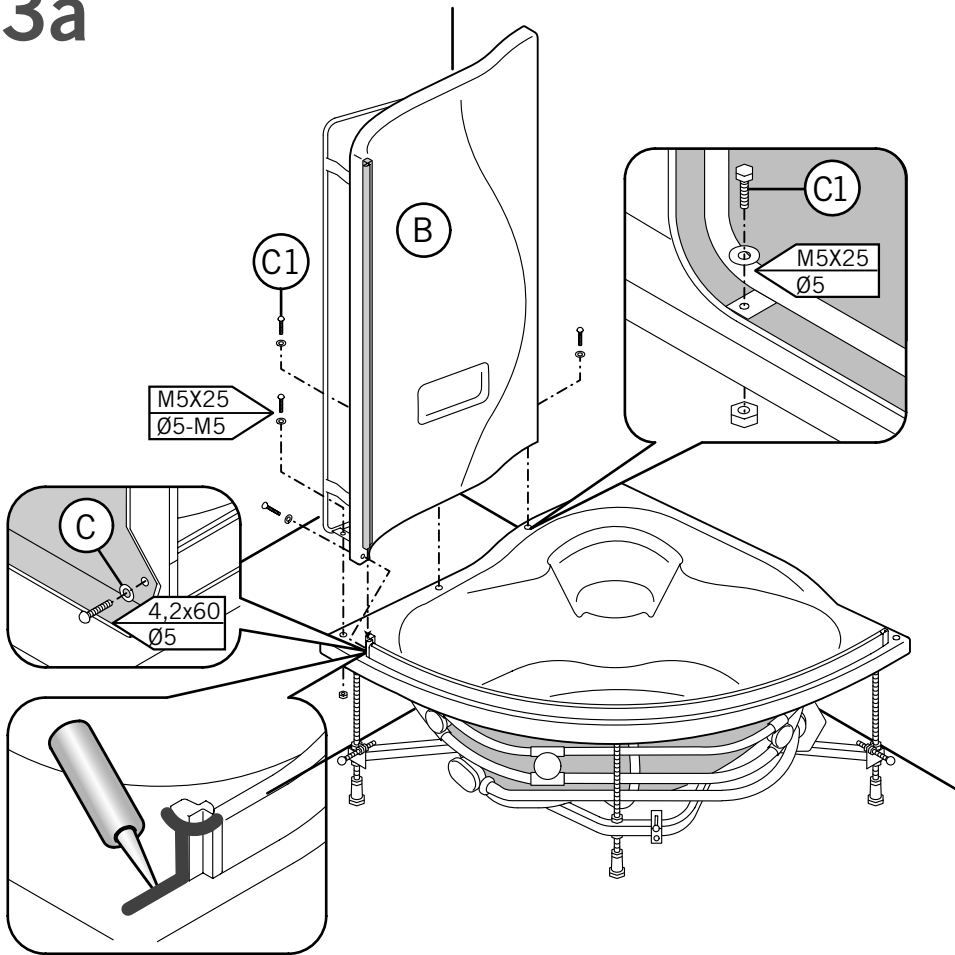
Pull the bottom part of the panel towards you so that the clips (Y) come out of their respective housings.

Loosen the nut beneath the frame of the bathtub, remove the protective brackets for the front panel and then tighten the nut once again.

Place the bathtub in the corner of the bathroom and make sure it is level by using the appropriate adjustable feet.

Prepare the drain connection using the trap supplied.

3a



ASSEMBLING THE BACK PANELS

Move the shower base away from the corner in order to proceed with the subsequent assembly steps.

Remove the screw from the end of the lower track.

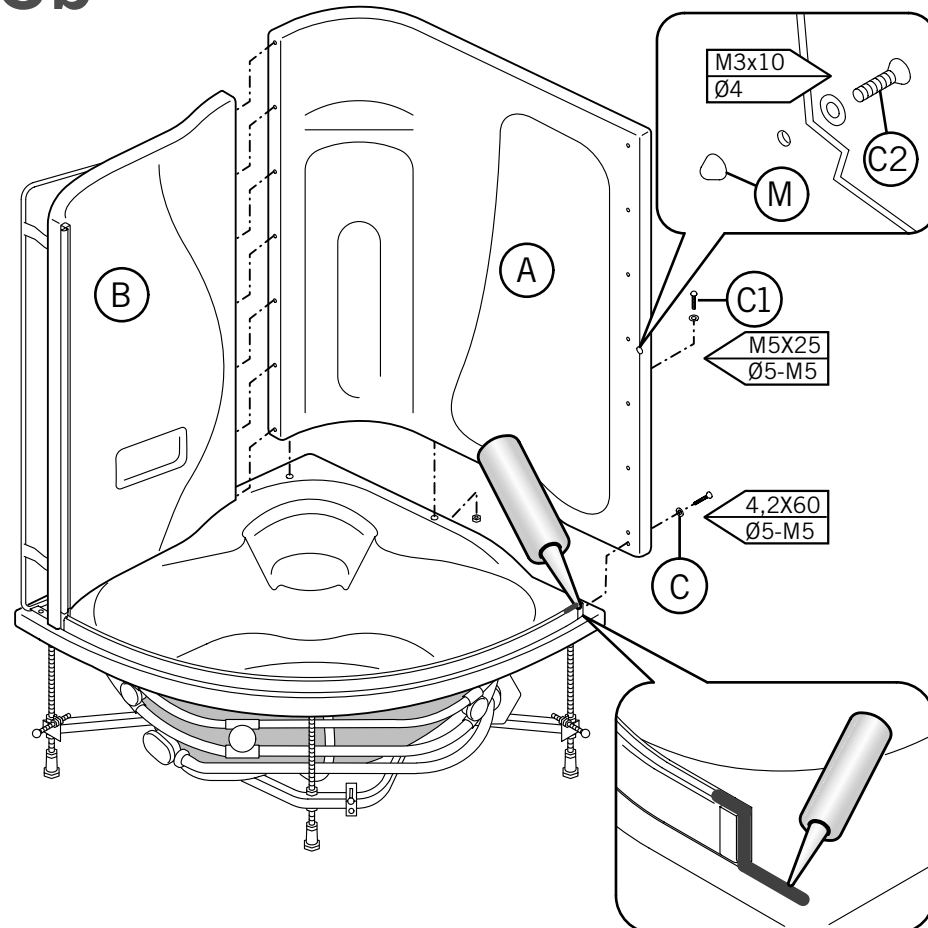
Apply silicone to the end of the track as shown in the diagram.

Place the back panel (B) onto the shower base and insert the support into the end of the bottom track.

Fasten the panel to the track with the screw (C) removed earlier and a washer.

Insert the screws with the washers (C1) and then fasten the panel to the bathtub with the appropriate nuts (C1).

3b



Bag (D) - plastic accessories

Fit the rubber doorstop (M) onto the panel (A) and fasten it with the screw and washer (C2).

Remove the screw from the end of the lower track.

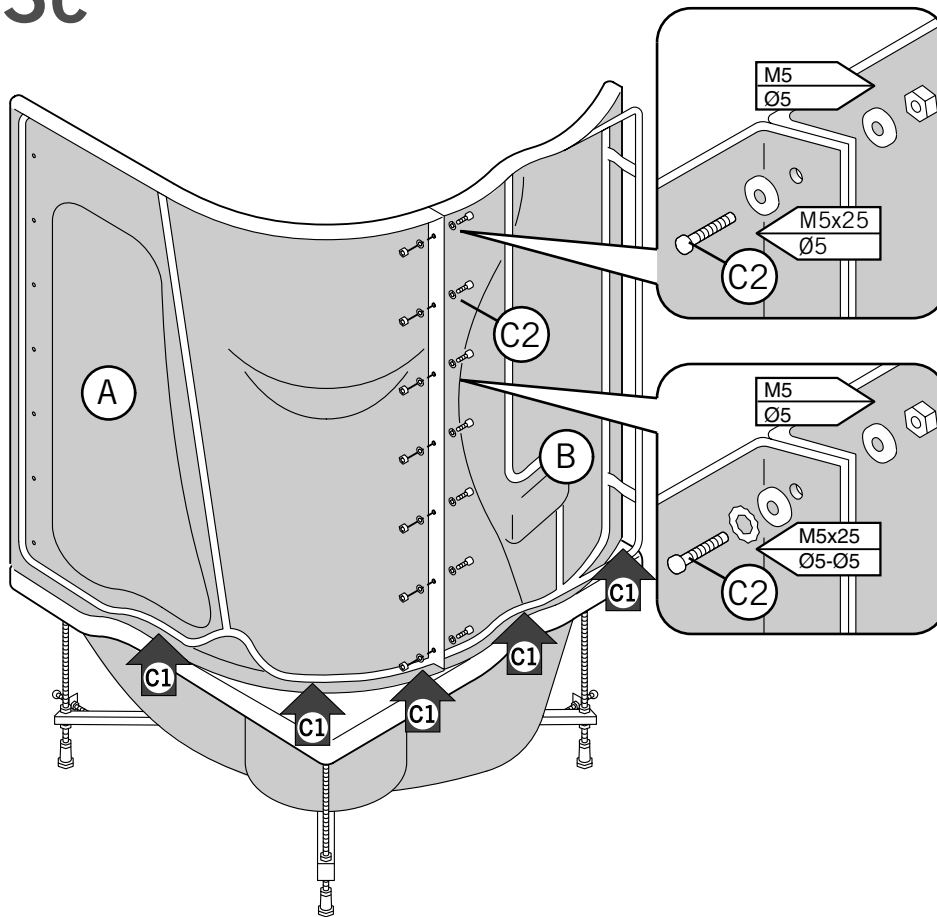
Apply silicone to the end of the track as shown in the diagram.

Place the back panel (A) onto the shower base and insert the support into the end of the bottom track.

Fasten the panel to the track with the screw (C) removed earlier and a washer.

Insert the screws with the washers (C1) and then fasten the panel to the bathtub with the appropriate nuts (C1).

3c

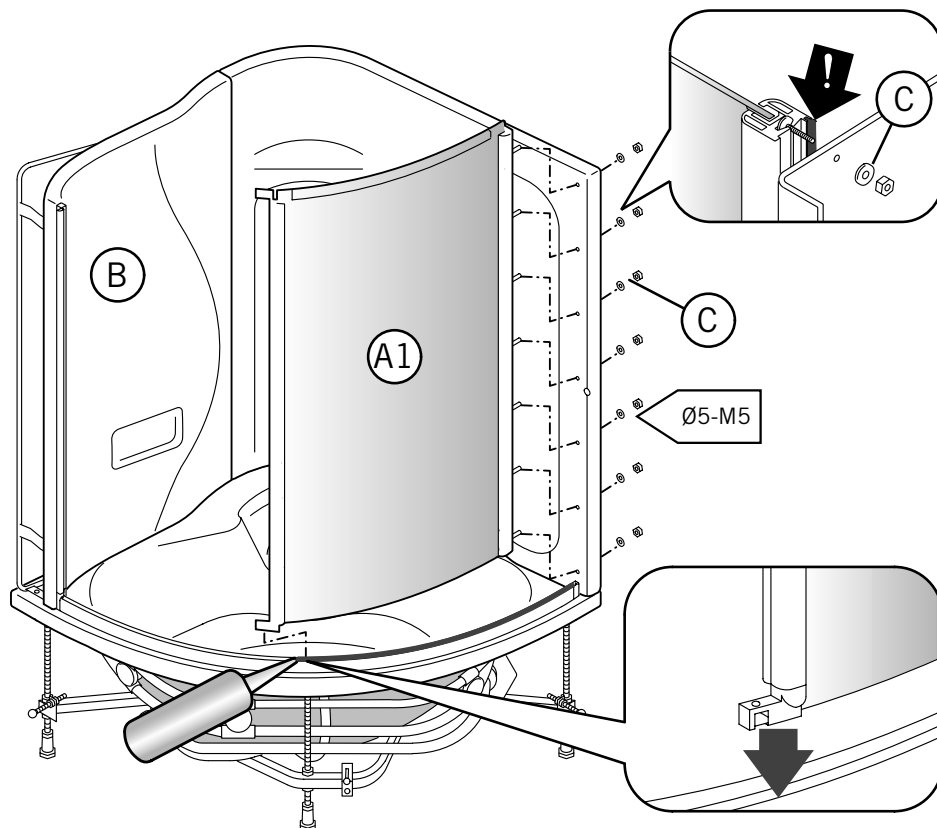


Fasten the back panels (A) and (B) together with the appropriate screws, nuts and washers (C2).

Tighten the screws (C1), which were already inserted into the bathtub, firmly.

To install the taps onto the back panel, consult the attached manual.

4



Bag (B) - screws for steps 4 - 5

INSTALLING THE SIDE PANELS

Apply silicone to the groove in the track corresponding to the position of the side panels, as indicated in the diagram.

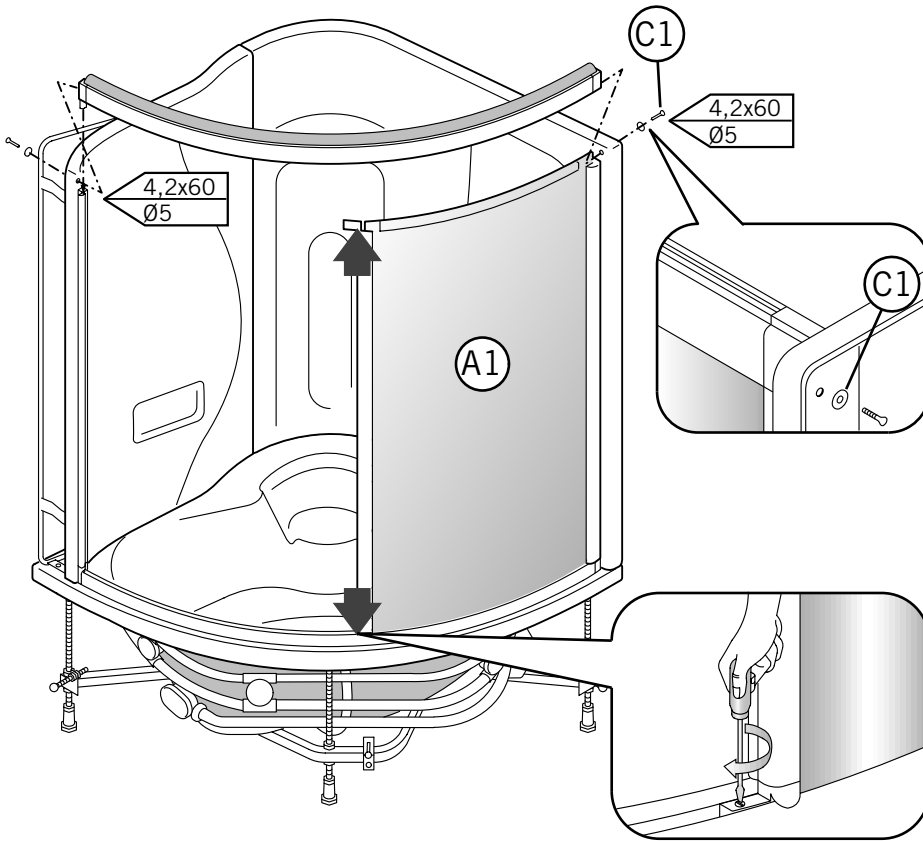
Carefully slide the side panels (A1) into the bottom track.

Position the threaded pins on the support for the side panel (A1) so that they match up with the holes on the back panel (A); if necessary, use a 2.5 Allen wrench.

Check that the seal (!) fits properly along the entire length of the side panel support (A1).

Fasten side panel (A1) to the back panel (A) with the appropriate nuts and washers (C).

5



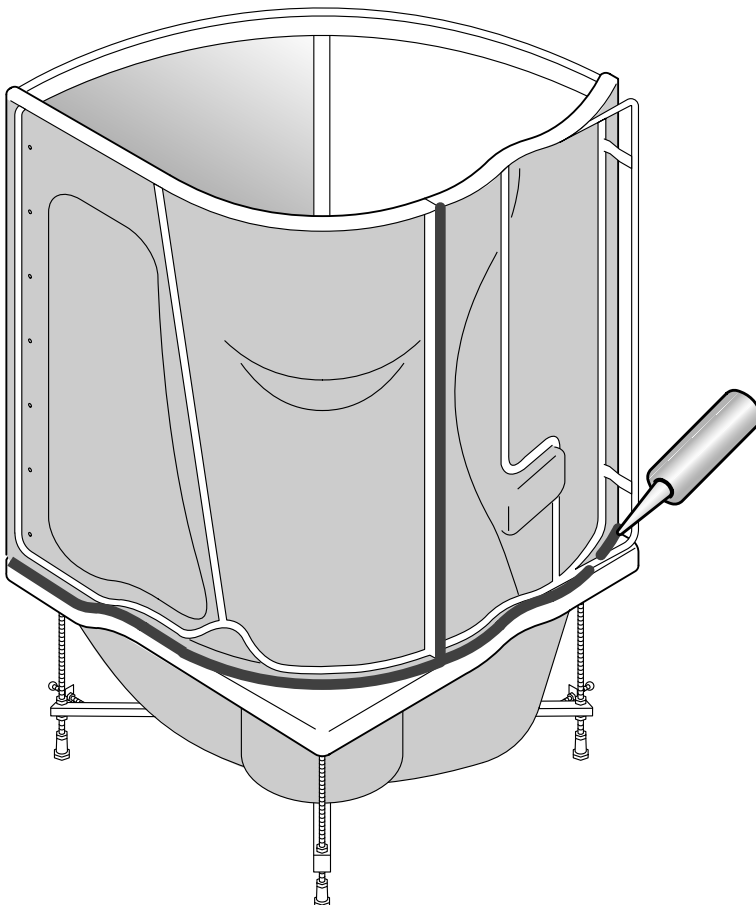
INSTALLING THE TOP TRACK

Remove the screws from the ends of the top track.

Insert the track onto the ends of the supports and fasten it to the back panels using the screws and washers (C1) that were removed earlier.

Tighten the screws on the ends of the side panel (A1) support.

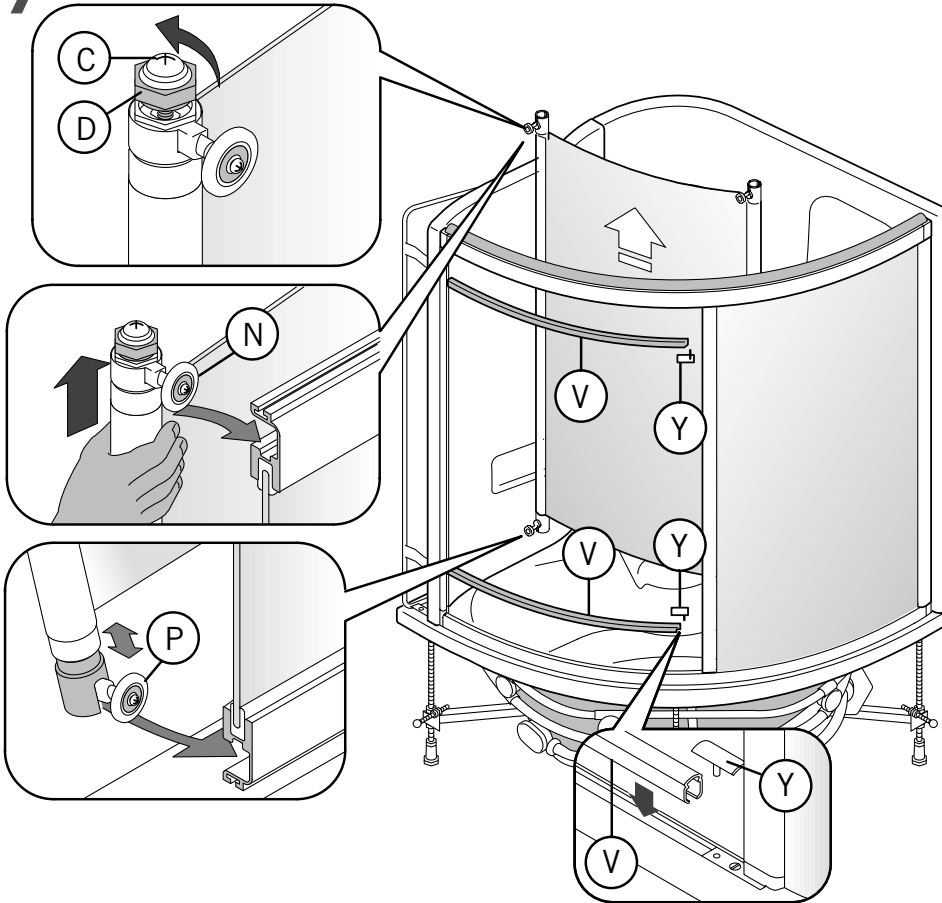
6



APPLYING SILICONE

Apply a **NEUTRAL (NON ACETIC)** silicone so as to prevent water from leaking between the back panel and the bathtub.

7



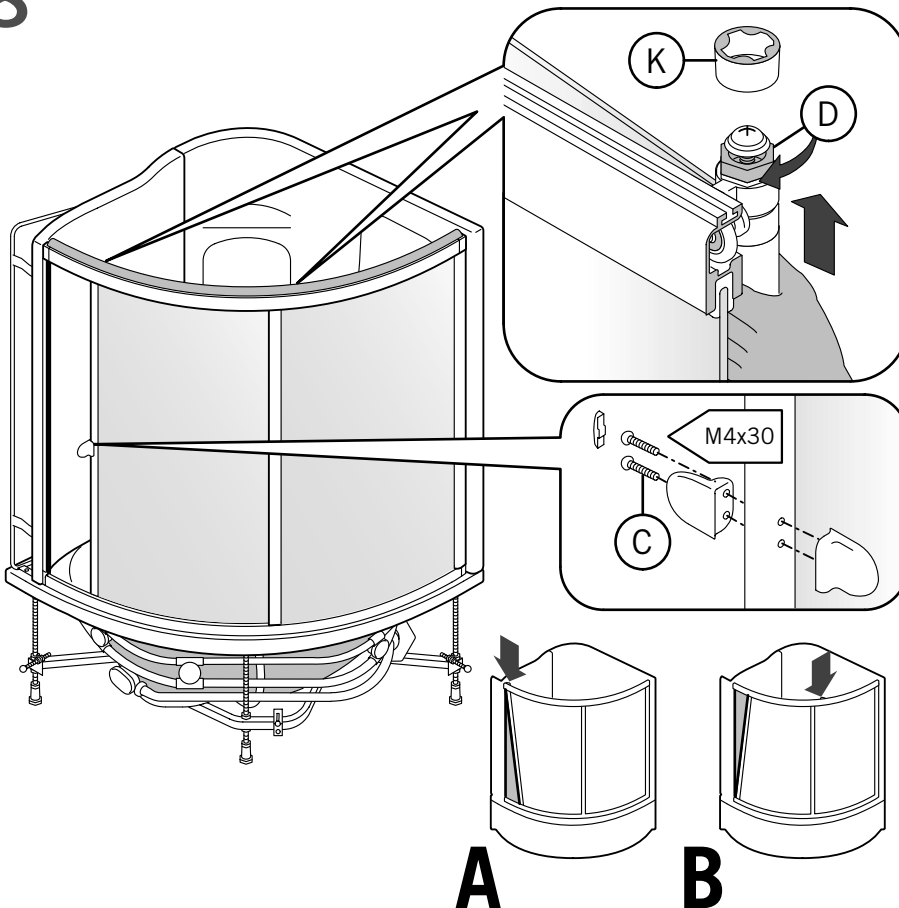
FITTING THE DOOR

Insert the track covers (V) and the end-trim (Y) into the top and bottom tracks.

Turn the nut (D) until it is flush with the top of the "C" screw. Mount the door, hooking the wheels (P) with the spring support onto the lower track

Lift the door up so that the top wheels (N) slide into the track.

8



CENTRING THE DOOR

Fit the handle onto the door support and tighten the screws (C). Then insert the piece of trim.

Close the door and make sure that the magnetic seals are aligned along the entire length of the door.

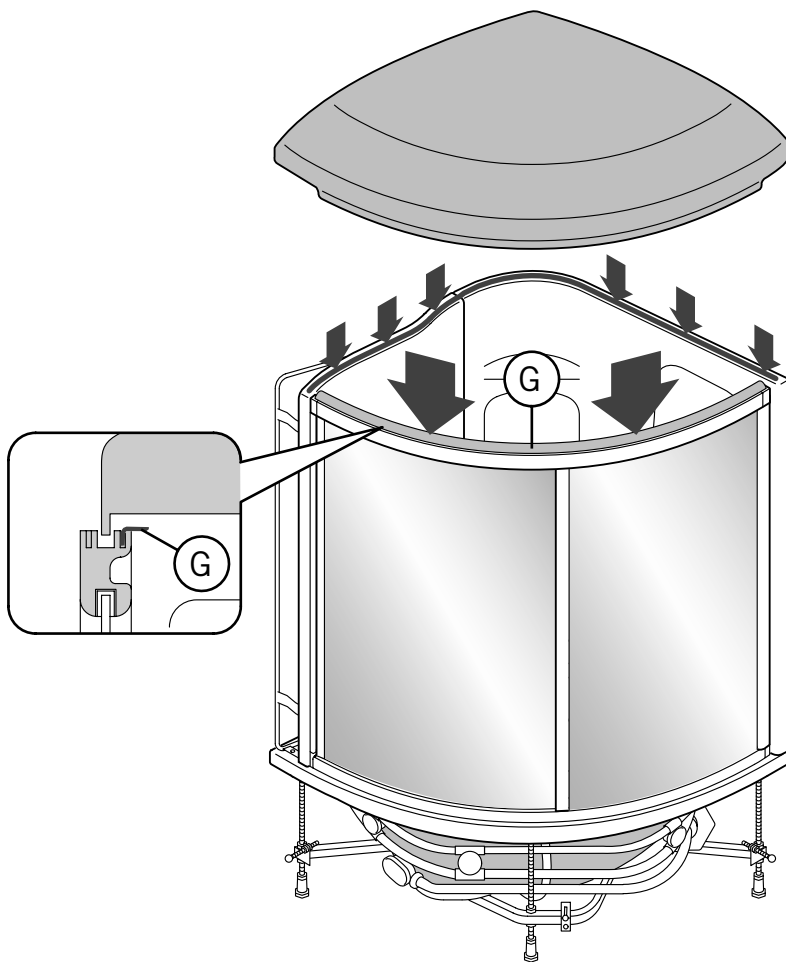
In the event that the seals do not come together - as in case (A) or case (B) - adjust the top slide assembly indicated by the arrow.

- Lift the door, grasping it by the supports.

- Tighten the screw (D) until the magnetic seals are aligned.

N.B. After adjusting the slide assembly, lock the nuts (D) in place, inserting the covers (K) with the inner wings facing outwards.

9



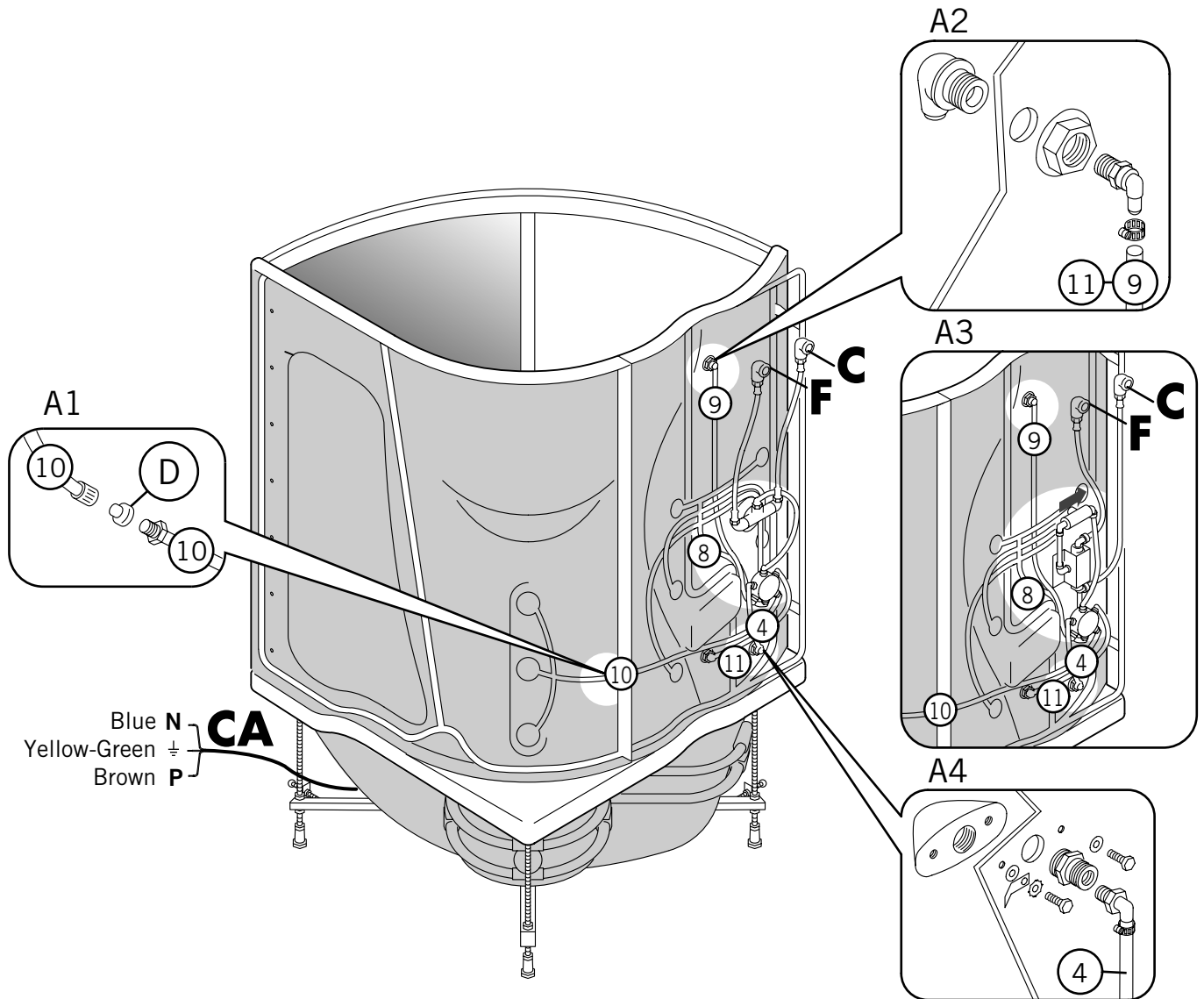
**ONLY FOR ARTICLES
252S - 252E**

**MOUNTING THE SAUNA
DOME ONTO THE SHOWER
CABIN**

Place the adhesive steam seal onto the top edge of the back panels.

Position the sauna onto the shower cabin, making sure not to damage the water and electrical hoses attached to it. Make sure that the steam seal (G) remains turned toward the inside of the shower cabin and that the front edge of the dome fits into the slot on the top track.

Art. 252M(MULTI) - Multifunction Hydroshower with whirlpool



Once the plugs (D) have been removed, they should not be used again.

C - Hot water connection.
Use a 90 cm flexible stainless steel hose.

F - Cold water connection.
Use a 90 cm flexible stainless steel hose.

A1 - Connection for hose 10 for the back massage unit.

A2 - Connection for the both shower system using tube 9, which is supplied, and for tube 11 for the foot massage unit.

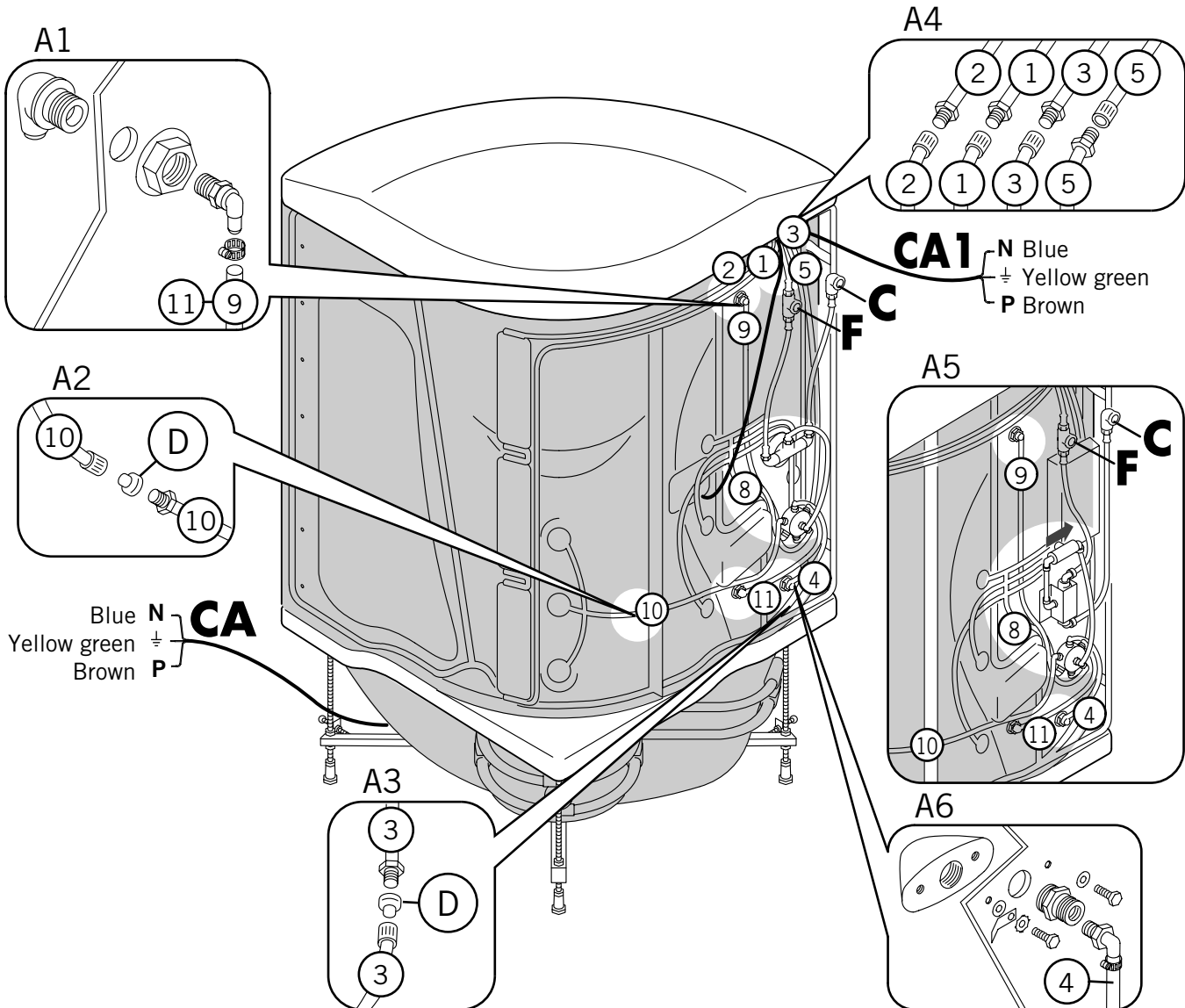
A3 - Diagram for the water supply connection for the model with a thermostatic mixer.
When installing the shut-off valve, pay special attention to the direction of the arrow.

A4 - Connection for the tap with tube 4 mounted on the cabin and the diverter.

The electrical installation must comply with the safety regulations for bathroom installation, as described in the attached user's manual.

CA - Electrical connection for the **IPX5** whirlpool (box with cable clamp PG 13.5).

Art. 252S(TOP) - Top Multifunction Hydrosteam with whirlpool



Once the plugs (D) have been removed, they should not be used again.

C - Hot water connection.
Use a 90 cm flexible stainless steel hose.

F - Cold water connection.
Use a 90 cm flexible stainless steel hose and a union T for the water supply to the sauna.

A1 - Connection for the shower system using hose 9, which is supplied, and for hose 11 for the foot massage.

A2 - Connection for hose 10 for the back massage unit.

A3 - Connection for hose 3 (to the drain pipe).

A4 - Connection for hoses 1-2-3 for the sauna and hose 5 for the shower head with nebulizer.

NB: Hoses 1 and 2 for the decalcification system must always be filled with water. Therefore, this system must not be emptied during installation.

A5 - Diagram for the water supply connection for the model with and a thermostatic mixer. When installing the shut-off valve, pay special attention to the direction of the arrow.

A6 - Connection for the tap with tube 4 mounted on the cabin and the diverter.

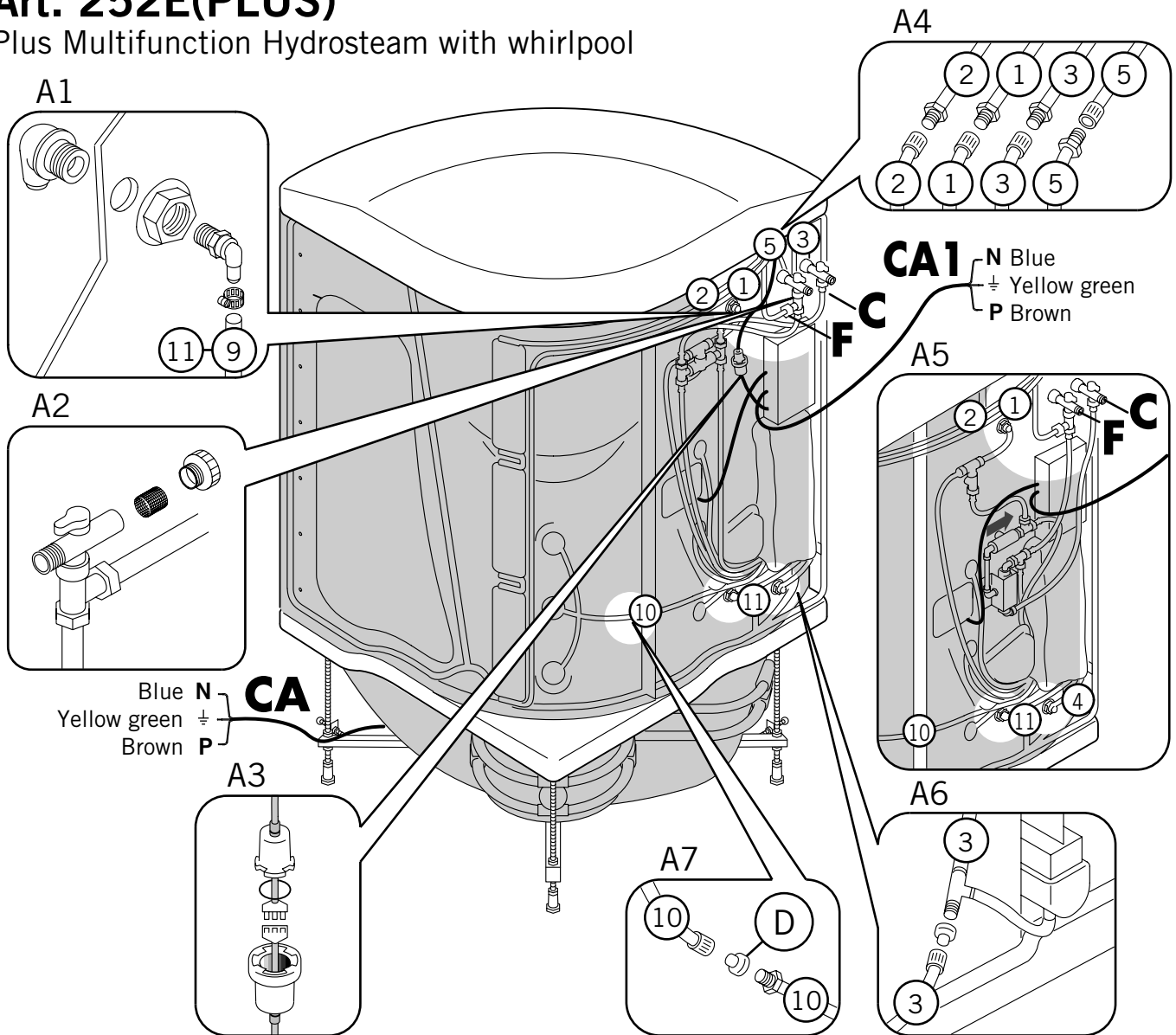
The electrical installation must comply with the safety regulations for bathroom installation, as described in the attached user's manual.

CA - Electrical connection for the IPX5 whirlpool (box with cable clamp PG 13.5)

CA1 - Electrical connection for the IPX4 sauna (box with cable clamp PG 21)

Art. 252E(PLUS)

Plus Multifunction Hydrosteam with whirlpool



Once the plugs (D) have been removed, they should not be used again.

C - Hot water connection.
Use and a 60 cm flexible stainless steel hose.

F - Cold water connection.
Use and a 80 cm flexible stainless steel hose and a union T for the water supply to the sauna.

A1 - Connection for the shower system using hose 9, which is supplied, and for hose 11 for the foot massage.

A2 - Cleaning the taps with filter.

A3 - Connection for the electrical wire from the sauna to the wire from the power unit.

A4 - Connection for hoses 1-2-3 for the sauna and hose 5 for the shower head with nebulizer.

NB: Hoses 1 and 2 for the decalcification system must always be filled with water. Therefore, this system must not be emptied during installation.

A5 - Diagram for the water supply connection for the model with and a thermostatic mixer.
Use and a 60 cm flexible stainless steel hose (F) and a 80 cm flexible stainless steel hose (C).

When installing the shut-off valve, pay special attention to the direction of the arrow.

A6 - Connection for hose 3 (to the drain pipe).

A7 - Connection for hose 10 for the back massage unit.

The electrical installation must comply with the safety regulations for bathroom installation, as described in the attached user's manual.

CA - Electrical connection for the IPX5 whirlpool (box with cable clamp PG 13.5)

CA1 - Electrical connection for the IPX4 sauna (box with cable clamp PG 21)

11

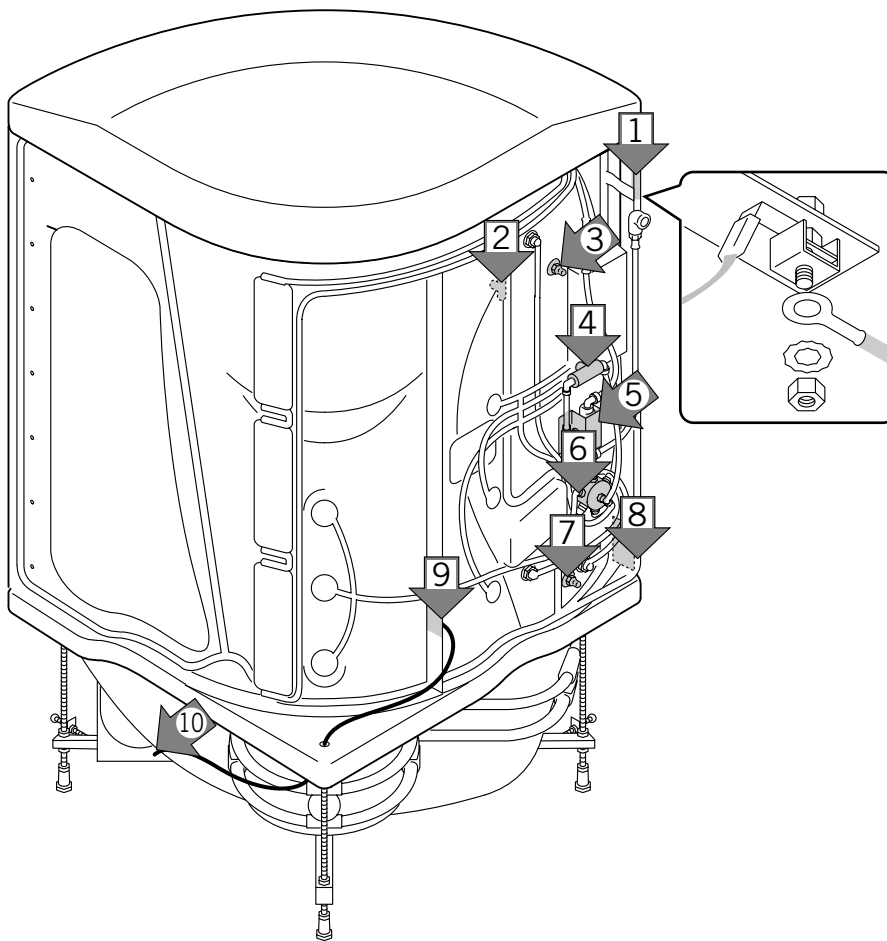
ONLY FOR ARTICLES
252S - 252E

EQUIPOTENTIAL EARTHING CONNECTION

Connect the metal parts of the cabin with the yellow wire as indicated in the diagram.

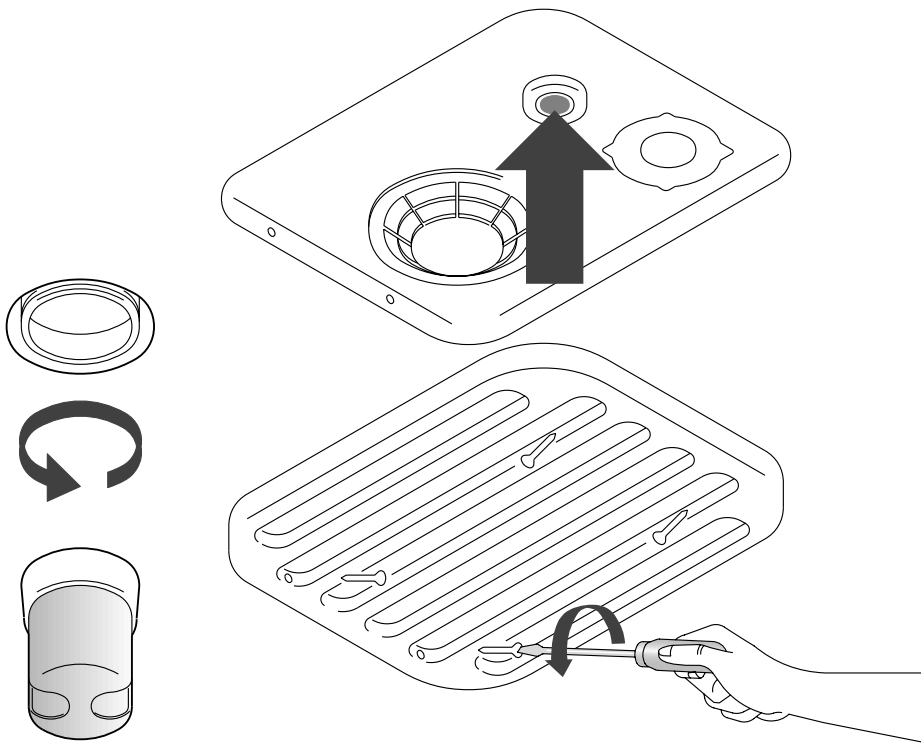
There is a terminal at point (1) for the equipotential connection of the other grounds present in the room.

NB: If one of the components indicated in the diagram is not present on the model purchased, insulate the corresponding "fast on".



- | | |
|---|--|
| <ul style="list-style-type: none"> 1 FRAME 2 EMERGENCY TAP 3 SHOWER SUPPORT ROD 4 SHUT-OFF VALVE FOR THERMOSTATIC MIXER 5 MIXER OR THERMOSTATIC MIXER 6 DIVERTER 7 TAP 8 SLIDING RAIL | <ul style="list-style-type: none"> 9 BACK PANEL FRAME WITH TAPS AND FITTINGS 10 PUMP SUPPORT |
|---|--|

12



USING THE SHOWER FOR THE FIRST TIME

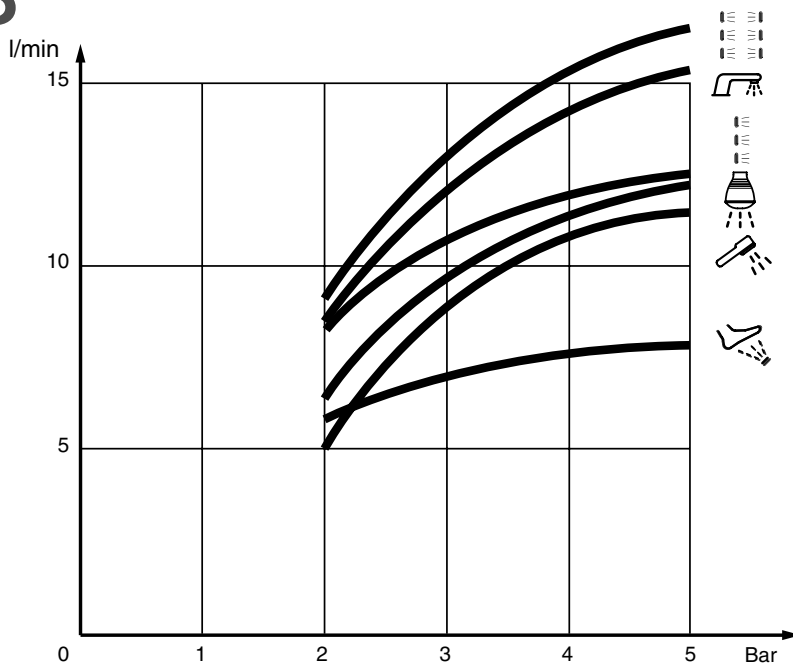
Once all of the connections are made and before fastening the cabin to the wall, remove all of the adhesive tags.

Run the regeneration and a sauna cycle, following the instructions contained in the attached user's manual.

Make sure that there are no water leaks in the connections and that everything operates normally.

If the first time the sauna system is turned on the control panel displays the "DIAGNOSIS 9" message, remove the grate and press the button for resetting the thermostat, indicated with the arrow.

13

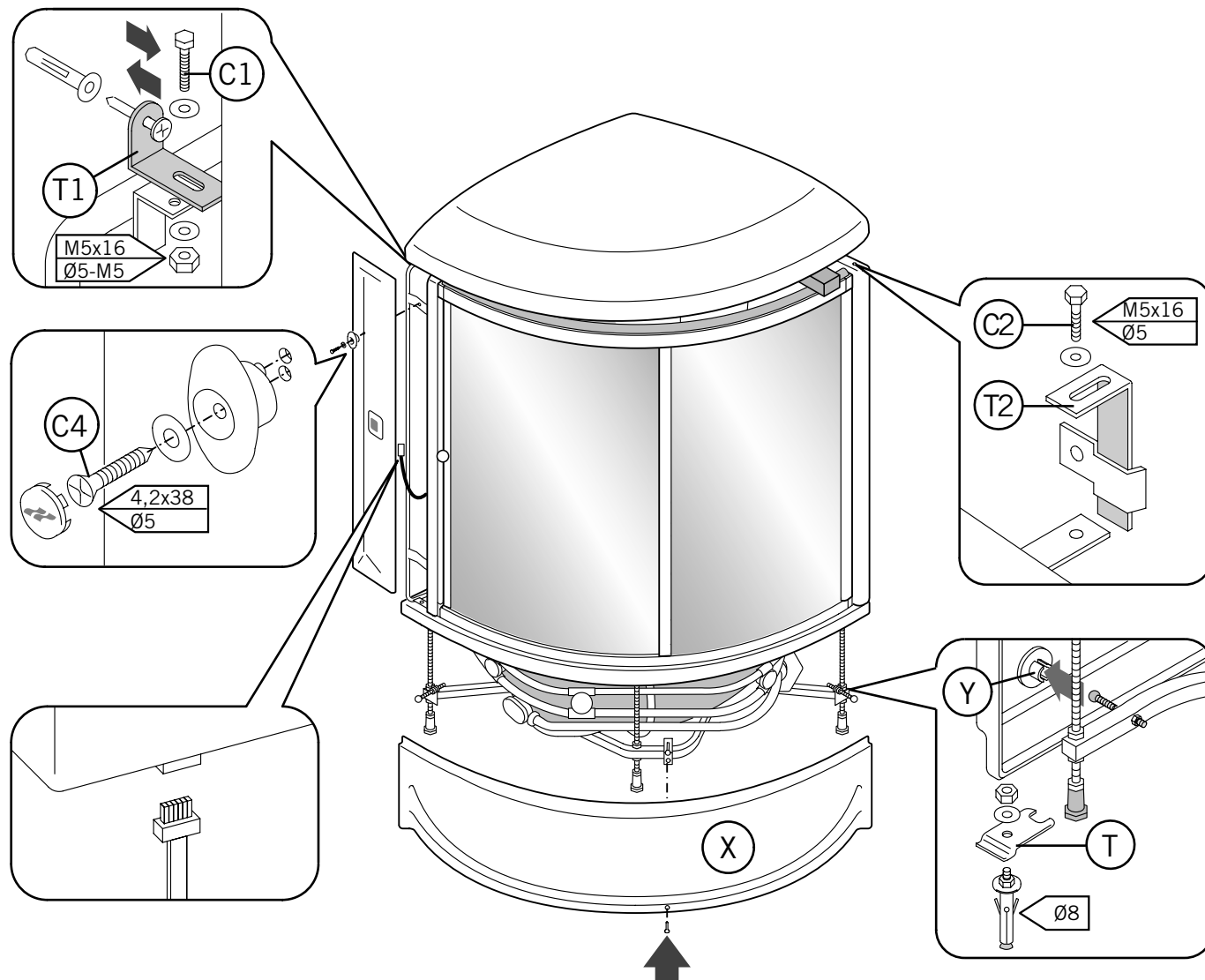


HYDRAULIC CHARACTERISTICS

Diagram of the mixed water flow for the various features.

- Vertical massage
- Back massage
- Foot massage
- Overhead fixed shower with nebulizer
- Shower massage
- Spout from overflow

14



Bag (C) - screws for step 14

FIXING THE SHOWER TO THE WALL

If the unit is equipped with and a sauna, you must lift the dome and insert a spacer between the track and the dome itself in order to fix the cabin definitively.

Move the cabin to the wall, position the bracket (T1) on the frame, drill a hole in the wall, insert the screw with the fischer and fasten the bracket (T1) to the frame, tightening the screw with the washer (C1).

Insert the corner bracket (T2) into the bracket on the wall and fasten it with the screw and washer (C2).

Fit the side panel by sliding it down from the top so as to hook it onto the support bracket on the frame.

Fix the side panel by mounting the towel-knob with the screws and washers (C2); insert the trim.

Fix the bathtub to the floor with plates (T), screws and fischers.

Re-install the bathtub panel by inserting the top edge underneath the bathtub and pressing the clips (Y) so that they go back into their respective housings; fasten the panel with the screw which was removed previously.

ONLY FOR ARTICLE 252E

Connect the cable (S) to the control panel located on the side panel.