

Digital Still Camera

Instruction Manual

Cyber-shot



DSC-H300

© 2013 Sony Corporation Printed in China



English

Learning more about the camera (“Cyber-shot User Guide”)



“Cyber-shot User Guide” is an on-line manual. Refer to it for in-depth instructions on the many functions of the camera.

- ① Access the Sony support page.
<http://www.sony.net/SonyInfo/Support/>
- ② Select your country or region.
- ③ Search for the model name of your camera within the support page.
 - Check the model name on the bottom of your camera.

Checking the supplied items

The number in parentheses indicates the number of pieces.

- Camera (1)
- LR6 (size AA) alkaline batteries (4)
- Dedicated USB cable (1) (Sony Corporation 1-837-783-)
- Shoulder strap (1)
- Lens cap (1)/Lens cap strap (1)
- Instruction Manual (this manual) (1)

Owner's Record

The model and serial numbers are located on the bottom. Record the serial number in the space provided below. Refer to these numbers whenever you call your Sony dealer regarding this product.

Model No. DSC-H300

Serial No. _____

WARNING

To reduce fire or shock hazard, do not expose the unit to rain or moisture.

CAUTION

Replace the battery with the specified type only. Otherwise, fire or injury may result.

For Customers in the U.S.A.

UL is an internationally recognized safety organization. The UL Mark on the product means it has been UL Listed.

If you have any questions about this product, you may call:
Sony Customer Information Center
1-800-222-SONY (7669)

The number below is for the FCC related matters only.

Regulatory Information

Declaration of Conformity

Trade Name: SONY
Model No.: DSC-H300
Responsible Party: Sony Electronics Inc.
Address: 16530 Via Esprillo,
San Diego, CA 92127 U.S.A.
Telephone No.: 858-942-2230

This device complies with Part 15 of the FCC Rules. Operation is subject to the following two conditions: (1) This device may not cause harmful interference, and (2) this device must accept any interference received, including interference that may cause undesired operation.

CAUTION

You are cautioned that any changes or modifications not expressly approved in this manual could void your authority to operate this equipment.

Note:

This equipment has been tested and found to comply with the limits for a Class B digital device, pursuant to Part 15 of the FCC Rules.

These limits are designed to provide reasonable protection against harmful interference in a residential installation. This equipment generates, uses, and can radiate radio frequency energy and, if not installed and used in accordance with the instructions, may cause harmful interference to radio communications. However, there is no guarantee that interference will not occur in a particular installation. If this equipment does cause harmful interference to radio or television reception, which can be determined by turning the equipment off and on, the user is encouraged to try to correct the interference by one or more of the following measures:

- Reorient or relocate the receiving antenna.
- Increase the separation between the equipment and receiver.
- Connect the equipment into an outlet on a circuit different from that to which the receiver is connected.
- Consult the dealer or an experienced radio/TV technician for help.

The supplied interface cable must be used with the equipment in order to comply with the limits for a digital device pursuant to Subpart B of Part 15 of FCC Rules.

For Customers in Europe

Notice for the customers in the countries applying EU Directives

Manufacturer: Sony Corporation, 1-7-1 Konan Minato-ku Tokyo, 108-0075 Japan
For EU product compliance: Sony Deutschland GmbH, Hedelfinger Strasse 61, 70327 Stuttgart, Germany

Notice

If static electricity or electromagnetism causes data transfer to discontinue midway (fail), restart the application or disconnect and connect the communication cable (USB, etc.) again.

This product has been tested and found compliant with the limits set out in the EMC regulation for using connection cables shorter than 3 meters (9.8 feet).

The electromagnetic fields at the specific frequencies may influence the picture and sound of this unit.

Disposal of Old Electrical & Electronic Equipment (Applicable in the European Union and other European countries with separate collection systems)



This symbol on the product or on its packaging indicates that this product shall not be treated as household waste. Instead it shall be handed over to the applicable collection point for the recycling of electrical and electronic equipment. By ensuring this product is disposed of correctly, you will help prevent potential negative consequences for the environment and human health, which could otherwise be caused by inappropriate waste handling of this product. The recycling of materials will help to conserve natural resources. For more detailed information about recycling of this product, please contact your local Civic Office, your household waste disposal service or the shop where you purchased the product.

Disposal of waste batteries (applicable in the European Union and other European countries with separate collection systems)



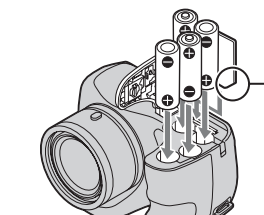
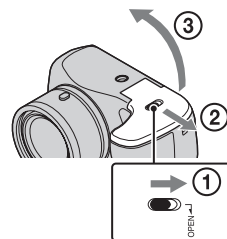
This symbol on the battery or on the packaging indicates that the battery provided with this product shall not be treated as household waste. On certain batteries this symbol might be used in combination with a chemical symbol. The chemical symbols for mercury (Hg) or lead (Pb) are added if the battery contains more than 0.0005% mercury or 0.004% lead.

By ensuring these batteries are disposed of correctly, you will help prevent potentially negative consequences for the environment and human health which could otherwise be caused by inappropriate waste handling of the battery. The recycling of the materials will help to conserve natural resources.

In case of products that for safety, performance or data integrity reasons require a permanent connection with an incorporated battery, this battery should be replaced by qualified service staff only.

To ensure that the battery will be treated properly, hand over the product at end-of-life to the applicable collection point for the recycling of electrical and electronic equipment. For all other batteries, please view the section on how to remove the battery from the product safely. Hand the battery over to the applicable collection point for the recycling of waste batteries. For more detailed information about recycling of this product or battery, please contact your local Civic Office, your household waste disposal service or the shop where you purchased the product.

Inserting the batteries/a memory card (sold separately)



Ensure the notched corner faces correctly.

- 1 Open the cover.
- 2 Insert the memory card (sold separately).
- 3 Match +/– and insert the batteries.

Batteries you can and cannot use with your camera

In the table below, ✓ indicates the battery can be used, while — indicates the one cannot be used.

Battery type	Supplied	Supported
LR6 (size AA) alkaline batteries	✓	✓
HR 15/51: HR6 (size AA) Nickel-Metal Hydride batteries	—	✓
Lithium batteries*	—	—
Manganese batteries*	—	—
Ni-Cd batteries*	—	—

* Operating performance cannot be ensured if voltage drops or other problems are caused by the nature of the battery.

- Nickel-Metal Hydride batteries can be charged using a battery charger (sold separately).
- The performance of your camera differs depending on the manufacturer and the type of battery you use. Also, battery-performance may decline dramatically under low temperatures. Especially, at temperatures below 5 °C (41 °F), your camera may get turned off unexpectedly as you turn it on or switch the playback mode to the shooting mode. For more details on batteries, see “Batteries” in “Cyber-shot User Guide”.
- Please note that we cannot guarantee full performance of your camera when using the batteries not indicated as “supported” in the above table.

Battery life and number of images you can record/view

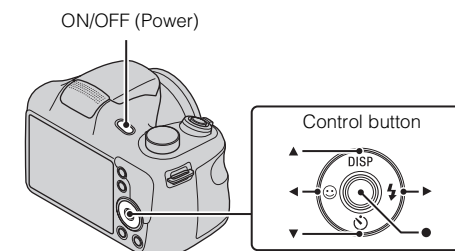
	Battery life	Number of images
Shooting (still images)	Approx. 175 min.	Approx. 350 images
Actual shooting (movies)	Approx. 85 min.	—
Continuous shooting (movies)	Approx. 150 min.	—
Viewing (still images)	Approx. 400 min.	Approx. 8,000 images

- The number is based on the CIPA standard.
(CIPA: Camera & Imaging Products Association)

To remove the memory card

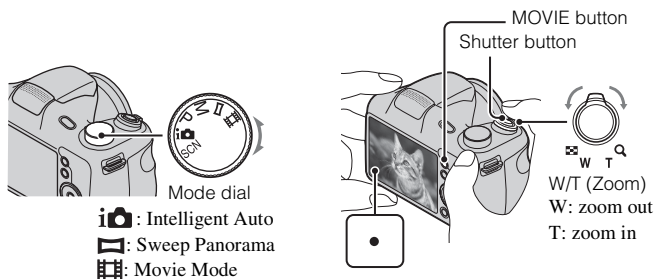
Push the memory card in once to eject the memory card.

Setting the clock



- 1 Press the ON/OFF (Power) button.
- 2 Select a desired language.
- 3 Select a desired geographic location by following the on-screen instructions, then press ● on the control button.
- 4 Set [Date & Time Format], [Summer Time] and [Date & Time], then select [OK].
- 5 Follow the instructions on the screen.

Shooting still images/movies



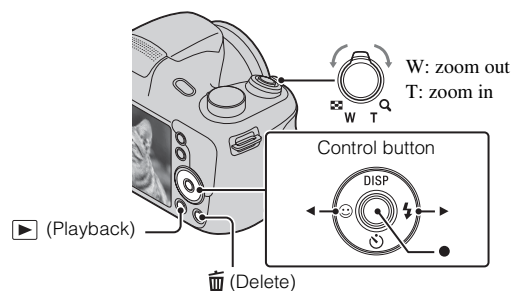
Shooting still images

- 1 Press the shutter button halfway down to focus.
- 2 Press the shutter button fully down to shoot an image.

Shooting movies

- 1 Press the MOVIE (Movie) button to start recording.
- 2 Press the MOVIE button again to stop recording.

Viewing images



- 1 Press the ► (Playback) button.

Selecting next/previous image

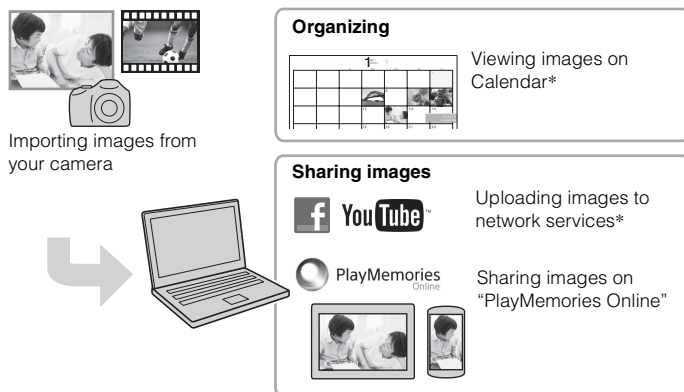
Select an image by pressing ► (next)/◄ (previous) on the control button. Press ● in the center of the control button to view movies.

Deleting an image

- 1 Press the 🗑️ (Delete) button.
- 2 Select [This Image] with ▲ on the control button, then press ●.

Features of “PlayMemories Home”

The software “PlayMemories Home” allows you to import still images and movies to your computer and use them.



* There is the difference between Windows and Mac.

Downloading “PlayMemories Home”

You can download “PlayMemories Home” from the following URL:
www.sony.net/pm/

• For software applications supporting Mac, please download from the following URL:
<http://www.sony.co.jp/imsoft/Mac/>

Recommended computer environment

The following computer environment is recommended when using the software “PlayMemories Home.”

Windows

OS (pre-installed)	Windows Vista® SP2/Windows 7 SP1/Windows 8
CPU	Intel Pentium III 800 MHz or faster
Memory	Windows Vista/Windows 7/Windows 8: 1 GB or more
Hard Disk (Disk space required for installation)	Approximately 600 MB
Display	1,024×768 dots or more

* Starter (Edition) is not supported.

Mac

OS (pre-installed)	Mac OS X v10.6 to v10.8
--------------------	-------------------------

Notes on using the camera

On use and care

Avoid rough handling, disassembling, modifying, physical shock, or impact such as hammering, dropping or stepping on the product. Be particularly careful of the lens.

Notes on recording/playback

- Before you start recording, make a trial recording to make sure that the camera is working correctly.
- The camera is neither dust-proof, nor splash-proof, nor water-proof.
- Avoid exposing the camera to water. If water enters inside the camera, a malfunction may occur. In some cases, the camera cannot be repaired.
- Do not aim the camera at the sun or other bright light. It may cause the malfunction of the camera.
- If moisture condensation occurs, remove it before using the camera.
- Do not shake or strike the camera. It may cause a malfunction and you may not be able to record images. Furthermore, the recording media may become unusable or image data may be damaged.

Warning on copyright

Television programs, films, videotapes, and other materials may be copyrighted. Unauthorized recording of such materials may be contrary to the provisions of the copyright laws.

No compensation for damaged content or recording failure

Sony cannot compensate for failure to record or loss or damage of recorded content due to a malfunction of the camera or recording media, etc.

Specifications

Camera

[System]

Image device: 7.76 mm (1/2.3 type) CCD, Primary color filter

Total pixel: Approx. 20.4 Megapixels

Effective pixel: Approx. 20.1 Megapixels

Lens: 35× zoom lens

f = 4.5 mm – 157.5 mm (25 mm – 875 mm (35 mm film equivalent))

F3.0 (W) – F5.9 (T)

While shooting movies (16:9): 30.3 mm – 1 060 mm

While shooting movies (4:3): 27.8 mm – 973 mm

SteadyShot: Optical

Burst shooting (when shooting with the largest pixel number):

Approx. 0.80 images/second (up to 100 images)

File format:

Still images: JPEG (DCF, Exif, MPF Baseline) compliant, DPOF compatible

Movies: MPEG-4 AVC/H.264

Recording media: Internal Memory (Approx. 55 MB), “Memory Stick Duo” media, “Memory Stick Micro” media, SD cards, microSD memory cards

Flash: Flash range (ISO sensitivity (Recommended Exposure Index) set to Auto):

Approx. 0.4 m to 6.8 m (1.3 ft. to 22.3 ft.) (W)

Approx. 1.5 m to 3.6 m (4.9 ft. to 11.8 ft.) (T)

[Input and Output connectors]

USB / A/V OUT jack:

Video output

Audio output

USB communication

USB communication: Hi-Speed USB (USB 2.0)

[Screen]

LCD screen: 7.5 cm (3.0 type) TFT drive

Total number of dots: 460 800 dots

[Power, general]

Power: LR6 (size AA) alkaline batteries (4), 6 V

HR15/51: HR6 (size AA) Nickel-Metal Hydride batteries (4) (sold separately), 4.8 V

Power consumption (during shooting): Approx. 1.6 W

Operating temperature: 0°C to 40°C (32°F to 104°F)

Storage temperature: –20°C to +60°C (–4°F to +140°F)

Dimensions (CIPA compliant):

127.5 mm × 89.0 mm × 91.7 mm (5 1/8 inches × 3 5/8 inches × 3 5/8 inches) (W/H/D)

Mass (CIPA compliant) (including four batteries and “Memory Stick Duo” media):

Approx. 590 g (1 lb 4.8 oz)

Microphone: Monaural

Speaker: Monaural

Exif Print: Compatible

PRINT Image Matching III: Compatible

Design and specifications are subject to change without notice.

Trademarks

- The following marks are trademarks of Sony Corporation.
Cyber-shot, “Cyber-shot,” “Memory Stick Duo,” “Memory Stick Micro,” “PlayMemories Home,” “PlayMemories Online” and “PlayMemories Online” logo
- Windows is registered trademark of Microsoft Corporation in the United States and/or other countries.
- Mac and Mac OS are registered trademarks of Apple Inc.
- SDXC logo is a trademark of SD-3C, LLC.
- Facebook and the “f” logo are trademarks or registered trademarks of Facebook, Inc.
- YouTube and the YouTube logo are trademarks or registered trademarks of Google Inc.
- In addition, system and product names used in this manual are, in general, trademarks or registered trademarks of their respective developers or manufacturers. However, the ™ or ® marks are not used in all cases in this manual.

Additional information on this product and answers to frequently asked questions can be found at our Customer Support Website.

<http://www.sony.net/>