

# User's Manual



## Basic

<http://www.HDDGuarder.com>

## Disclaimer

We have done our best to ensure that the material in this manual is both accurate and useful; however, please be aware that errors may exist, and it does not make any guarantee concerning the accuracy of information found here or in the use to which it may be put.

Before you install HddGuarder Basic card, please backup all your important files and ensure that it is stored separately just in case you are first time of using HddGuarder Basic card.

# CONTENTS

CHAPTER 1	INTRODUCTION .....	4
1-1	Function .....	4
1-2	Features.....	4
CHAPTER 2	INSTALLATION.....	6
2-1	System requirements .....	6
2-2	Before installation .....	6
2-3	Start installation.....	6
2-3-1	Installation of driver for Windows 2000/NT/XP (software installation).....	6
2-3-2	Installation of Guarder card (hardware installation).....	6
2-4	Express test .....	8
CHAPTER 3	BASIC OPERATION GUIDE .....	9
3-1	Definition of terms .....	9
3-2	Operation Guide.....	9
3-2-1	Hotkeys Menu.....	9
3-2-3	Set Parameters Menu .....	14
3-2-4	Protect CMOS .....	15
3-2-5	How to modify the password .....	15
3-2-6	How to uninstall Guarder .....	16
3-3	Unique Serial Number and Serial-Number Password .....	错误！未定义书签。
3-4	How to set Multi-Boot.....	16
3-4-1	Setting Multi-Bootable-Partition Booting by BootMagic .....	16
3-4-2	Setting Multi-OS Booting by System Commander .....	16
3-4-3	How to Skip Possible Virus Warning.....	17
CHAPTER 4	TROUBLESHOOTING .....	18
I forgot the password.....		18
As if no Guarder card is plugged in .....		18
Displaying blue screen and Windows breaks down .....		19

# Chapter 1 Introduction

## 1-1 Function

- 2 An express installation can be performed by pressing the <Enter> key 2 times, it cost you only five seconds.
- 2 Once hard disk data is destroyed by any mistake, virus and/or hacker, only press <9> key one time to recover it in half a second.
- 2 Support IDE and SCS hard disk controller.
- 2 Support PIO, DMA33, DMA66, Ultra DMA66, ATA-100 , Ultra ATA-100 IDE and SATA interface.
- 2 Support FAT16/16E, FAT32/32E, NTFS/HPFS partitions and file systems.
- 2 Support 256GB hard disk.
- 2 Guarder whole hard disk or selected partitions.
- 2 Support multi-OS booting by System Commander and multi-bootable-partition booting by BootMagic.
- 2 Support not only DOS, Windows 3x/95/98/ME, but also Windows NT/2000/XP/2003 server better.
- 2 Guard CMOS intelligently.

## 1-2 Features

- 2 When first set up, saved, or recovered, Guarder uses only 5KB of hard disk; when running , it uses 1.33MB of hard disk at most.
- 2 Dynamic Virtual Hard Disk Drive (DVHDD) is one created and managed by Guarder in guarded partitions for new data saving. Theoretically Guarder supports a DVHDD of 1207GB, practically it supports a 67GB one, so it better supports Windows NT/2000/XP/2003 server and ensures that the Defrag routine can run and large data can be saved when any partition is guarded.
- 2 The magic Save function is best suitable for such application environment about government, business, institute, home, finance, securities, accounting and the military. When any partition is guarded, all

writing on it will be recorded as new data. Once we use recovery or uninstallation function, all new data will be cleaned. Guarder provides Save function to write data onto hard disk.

- 2 Anti-Evil-Attack function is best suitable for cyber cafe and the computer labs of schools and colleges. When the attacker deletes all installation information on the guarded partitions, and reboots the computer, Guarder will enter a Security Check routine. OS can only be booted when the manager inputted the correct administrator password.

## Chapter 2 Installation

### 2-1 System requirements

CPU: 386 or above  
Memory: 8M or more  
Hard-disk: IDE, EIDE and SCSI

### 2-2 Before installation

- 2 Make sure that your computer meets the above-mentioned system requirements.
- 2 If a similar product has been installed, remove it and its drivers.
- 2 Scan and clean viruses with anti-virus software.
- 2 Make sure there is no static electricity.

### 2-3 Start installation

There are two steps of installation (hardware installation and software installation) separately for HddGuarder Basic card.

#### 2-3-1 Installation of driver for Windows 2000/NT/XP/2003

(software installation)

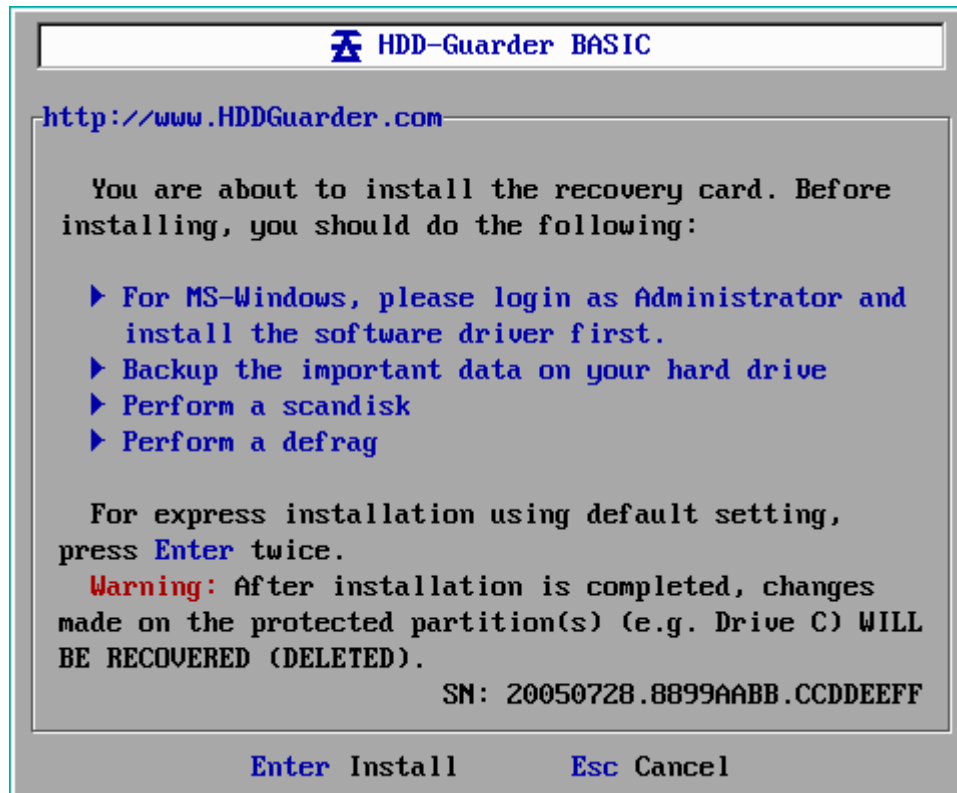
- 2 Boot the computer with Windows<sup>®</sup> 2000/NT/XP/2003.
- 2 Run Install.exe in the driver disk or CD supplied with the product or asking from your supplier.
- 2 Reboot your computer to complete the installation.

#### 2-3-2 Installation of HddGuarder card

(hardware installation)

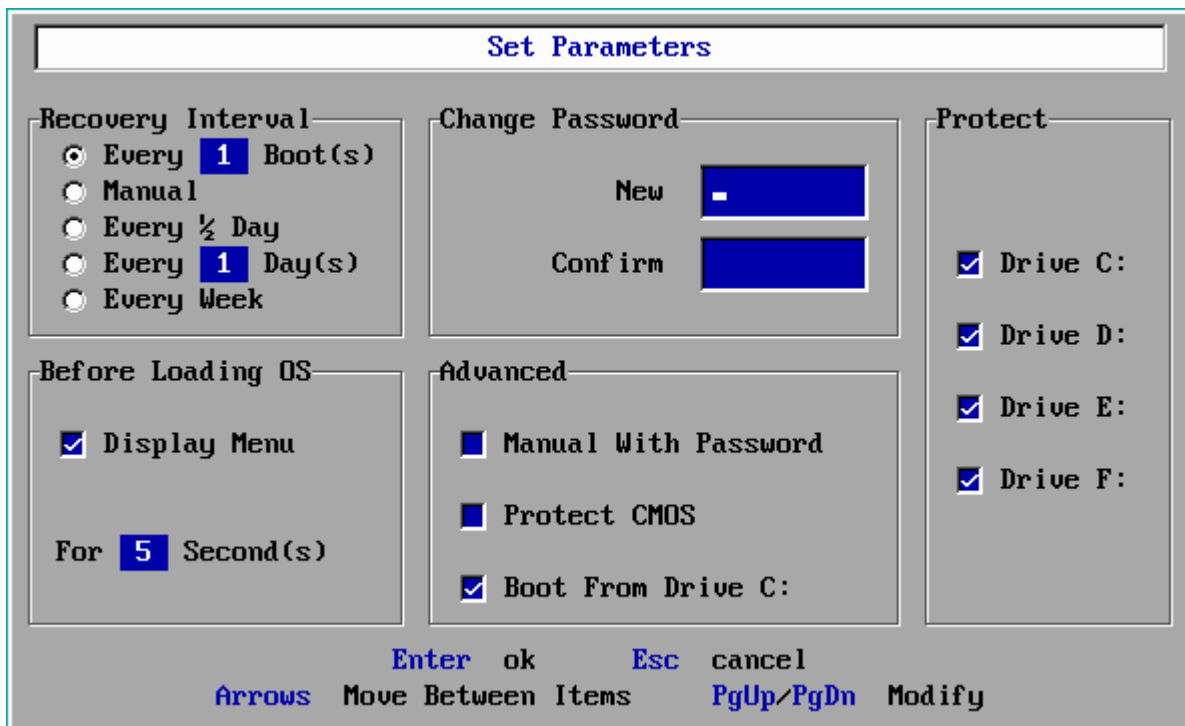
- 2 Make your computer turn off.
- 2 Insert the card into one of empty PCI slots on the motherboard of the computer.
- 2 Turn on your computer.

- 2 Check the setting of CMOS to make sure the parameters of hard disk are correct:
  - Ø Disable the Virus Warning item in CMOS setting.
  - Ø If there is a Hard Disk Recovery program in CMOS, disable it.
  - Ø If there are setting to lock the PCI slot, unlock it.
  
- 2 Reboot your computer, the following screen (Installation menu) will appear:



(Installation Menu)

- 2 Press <Enter> key two times, express installation will be finished with default parameters setting.
- 2 Press One <Enter> key, the following screen (Set Parameters Menu) will appear:



(Set Parameters Menu)

- 2 Press Arrow key to move.
- 2 Press <Space Bar> or <PgUp> <PgDn> to modify the setting.
- 2 Press <Enter> to save the setting and press <Esc> to give up the change of setting.

## 2-4 Express test

- 2 Create a folder at the root of drive C, and create another at Windows desktop.
- 2 Reboot your computer, if the folders disappear, it means that the HddGuarder functions well and has automatically finished recovery.



## Chapter 3 Basic Operation Guide

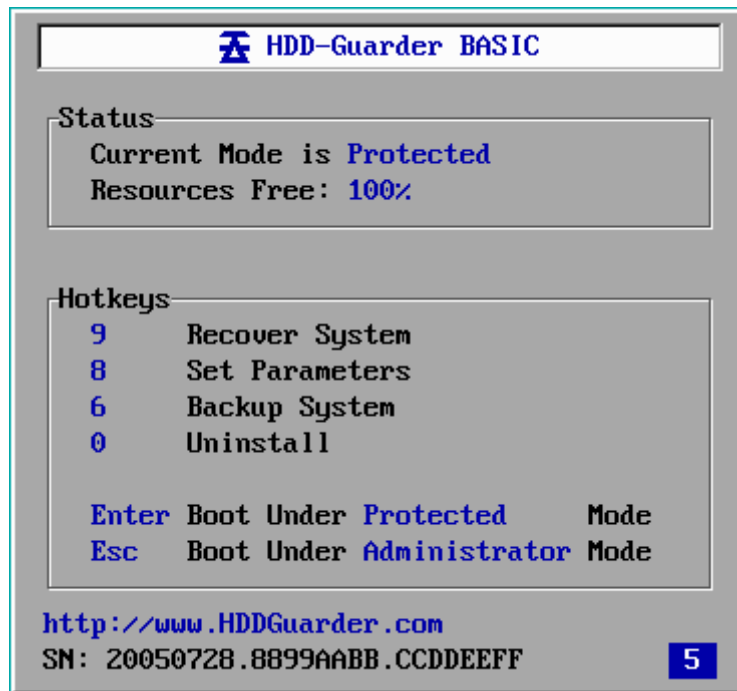
### 3-1 Definition of terms

- n Protected Mode: General operators such as students are recommended to use this mode. All useful data, files or programs are set to be protected and will be protected under this mode. All modification of the protected data will be recovered after Restore Data operation is executed.
- n Administrator Mode: The data on hard disk is not protected under this mode, the operator can really install, uninstall, upgrade, etc. even if the drive is set to be protected.
- n Save Data: If useful data are created under protected mode and need to be saved, you can perform this operation to update the changes you made during last session.
- n Recover Data: No matter how do you set the parameter, you could recover data by press this hotkey <9> key.
- n Manual with password: If you select this item, you have to input password after press <9> key, otherwise, you don't need password to recover data.

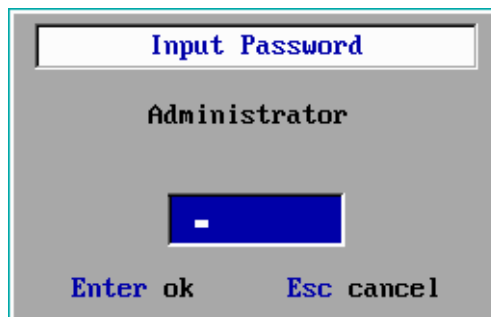
### 3-2 Operation Guide

#### 3-2-1 Hotkeys Menu

When booting your computer with HddGuarder installed completely, the following screen (Hotkeys Menu) will appear:



- 2 Pressing any key could stop the time counting.
- 2 Press <Enter> key, you will enter protected mode, in this mode, all changes in the protected partitions will be protected.
- 2 Press <Esc> key, the following screen will appear:



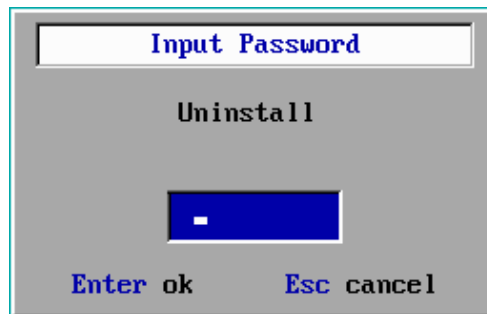
After inputting the correct password, press <Enter> key, the following screen will appear:



Press **Yes**, you will enter Operating System.

- 2 Press <O> key to uninstall HddGuarder.

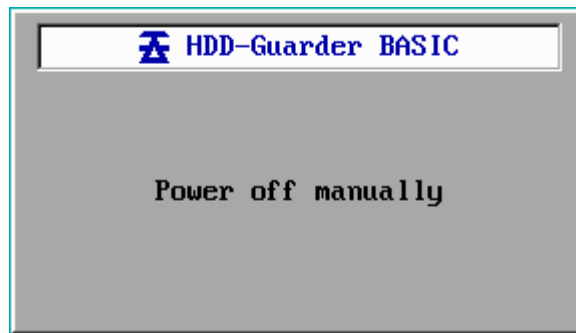
After pressing <O> key, the following screen will appear:



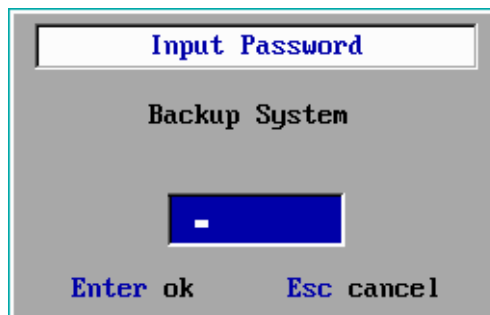
After inputting the correct password, press <Enter> key, the following screen will appear:



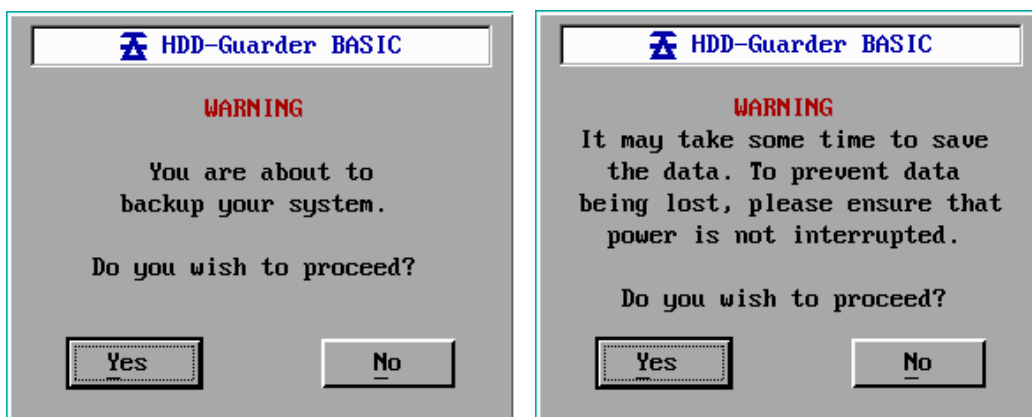
If you click **Yes**, the HddGuarder will automatically delete all the installation information, then the following screen appears:



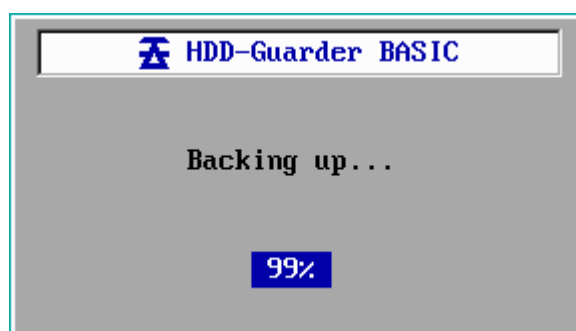
- 2 Press <6> key to save the changes you made in your last booting. After pressing <6> key, the following screen will appear:



After inputting the correct password, press <Enter> key, the following screen will appear:



Press Yes, the following screen will appear:



then the computer will automatically reboot.

- 2 Press <9> key to recover the changes.

After pressing <9> key, the following screen will appear:



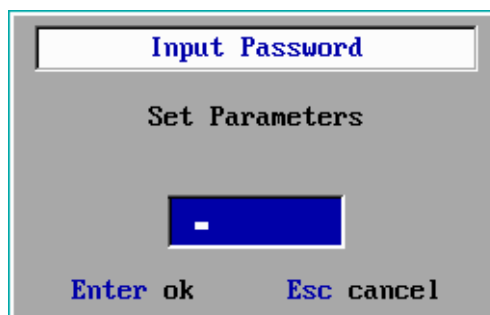
After inputting the correct password, press <Enter> key, the following screen will appear:



After pressing **Yes**, you will enter into Operating System with all changed data will be recovered..

- 2 Press <8> key to enter Set Parameters menu, in which you could set the parameters of HddGuarder.

After pressing <8> key, the following screen will appear:



After inputting the correct password, press <Enter> key to enter Set Parameter menu.

### 3-2-2 Set Parameters Menu

Press <8> key in Hotkeys Menu, the following screen will appear:

**Set Parameters**

**Recovery Interval**

Every **1** Boot(s)

Manual

Every ½ Day

Every **1** Day(s)

Every Week

**Change Password**

New

Confirm

**Protect**

Drive C:

Drive D:

Drive E:

Drive F:

**Before Loading OS**

Display Menu

For **5** Second(s)

**Advanced**

Manual With Password

Protect CMOS

Boot From Drive C:

Enter ok    Esc cancel

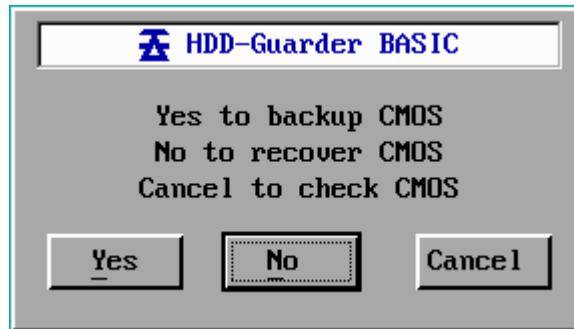
Arrows Move Between Items    PgUp/PgDn Modify

- 2 The default settings are as the above settings.
- 2 You could set the recover interval from every 1-99 boot, or every 1/2 day, or every 1-99 days, or every week, or manual recover.
- 2 If you mark **V** in the item of manual with password, that means you have to input password when you press <9> key to recover data; otherwise, you do not need.
- 2 If you mark **V** in the item of protect CMOS, that means the setting of CMOS is protected.
- 2 If you mark **V** in the item of boot from HD only, that means the computer has to boot from hard disk, otherwise not.
- 2 If you mark **V** in the item of Display Menu, that means when the computer booting, there will be Hotkey menu appear, otherwise, no any screen about HddGuarder and the computer will enter directly operating system. While you could get the Hotkeys Menu by pressing <8> key when booting your computer.
- 2 The displaying time could be modified from 15 seconds to 1 second, the default time is 5 seconds.
- 2 You could press arrow key to move from one item to another, press

<Space Bar> or <PgUp>/<PgDn> to modify the setting.

### 3-2-3 Protect CMOS

If you choose protect CMOS in Set Parameters menu, and if there are any changes for the setting of CMOS, the following screen will appear:

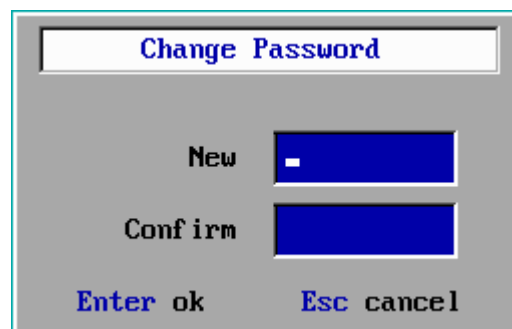


- 2 Press **Yes**, the changes of CMOS will be saved.
- 2 Press **No**, the changes of CMOS will be recovered.
- 2 Press **Cancel**, the computer will reboot three times, you could make any change for CMOS during the three reboots, and all changes will be saved permanently.

### 3-2-4 How to modify the password

The default password is **just press <Enter>key**, without password.

You could set your own administrator password from set Parameter Menu



You could input your password in New, then press <Enter> key, the cursor will turn to Confirm part, then just input your password again, kindly noted the two times passwords should be same.

*Noted: After input the second time password, you could not press <Enter>*

*key, otherwise, the set parameter menu will regards you have finished all setting and finished the setting and closed the menu.*

*If you still have other item not be setted, kindly press arrow key so to move to other itme to continual your setting, till you finish all setting, press <enter> key.*

If the two passwords you enter are not consistent, the following screen will appear to indicate that the password is not changed.



You could press Ok back to set parameter menu

### 3-2-5 How to uninstall HddGuarder

Press <O> key in Hotkeys Menu, please refer to 3-2-1.

## 3-3 How to set Multi-Boot

### 3-3-1 Setting Multi-Bootable-Partition Booting by BootMagic

BootMagic is a software packed with PQmagic. It is specially used in installing Multi Bootable Partitions.

Please set HD partitions in PQmagic first, and then install BootMagic, OS, applications and the HddGuarder in this order.

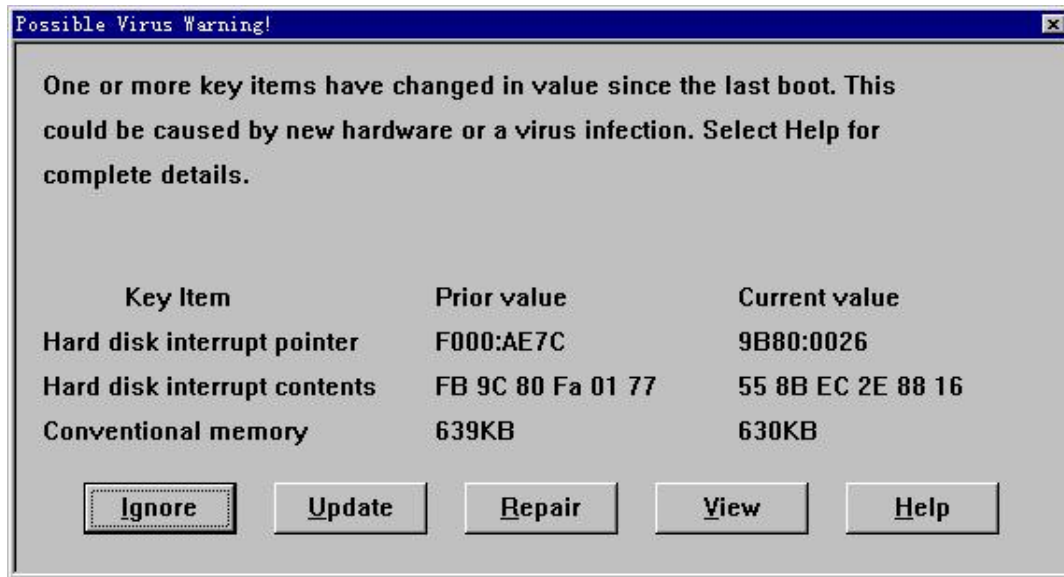
### 3-4-2 Setting Multi-OS Booting by System Commander

At the first, install OS and applications. At the second, install System Commander. At last, install HddGuarder.



### 3-4-3 How to Skip Possible Virus Warning

At the first time System Commander starts after HddGuarder installation, the Possible Virus Warning window will appear as follows.



Press <U> key to update. Reboot the computer and save hard disk data, and then as long as you do not uninstall the HddGuarder, this window will not appear whenever you recover hard disk data.

## Chapter 4 Troubleshooting

### Legends

- L Detailed description of the problems.
- J Analysis of possible causes.
- @ Ways to solve the problems.
- F Further notes.
- M Caution.

### I forgot the password

<b>J</b>	<p>There are two methods:</p> <ol style="list-style-type: none"><li>a. Plug out the Basic card, insert it into other PC which is with difference MB as what you are using one, after inserting, it will be prompted SN password, just input the default password(enter key), then there are installation menu appear, plug out the card, and insert back to the first Pc, the card could be installed again</li><li>b. If there are no other PC which is with difference Motherboard, you could plug out one Basic card which you remember its administrator password(called as B card), then insert in the card which you forgot the password(called as A card), and use the administrator password of B card uninstall A card, then plug out A card, and insert it back to the first Pc.</li></ol>
----------	--

### As if no HddGuarder Basic card is plugged in

<b>L</b>	<p>After rebooting, no installation menu appears, and the computer</p>
----------	--

	starts OS as usual.
J	<p>For the case, the possible causes may be</p> <ul style="list-style-type: none"> <li>2 The card is not properly plugged.</li> <li>2 The power supply has poor loading capacity.</li> <li>2 CMOS is not properly configured.</li> <li>2 The boot mode does not match BIOS. Please refer to Boot Mode section in the Advanced Guide chapter to change the Boot Mode by pressing &lt;Ctrl+B&gt;.</li> </ul>
@	<ul style="list-style-type: none"> <li>u Plug the card again, or change a slot, or clean the slot/the card.</li> <li>u Retry it with another HddGuarder card. If the power supply does not work, contact your computer distributor or the manufacturer, and replace either the power supply or the computer itself.</li> <li>u For some AMI BIOS motherboard, set the CMOS parameter ;BIOS FEATURES SETUP; as follows: Set First boot device to LAN. Or set Boot from LAN first to Enable. Certain motherboards or BIOS may also require Set PnP OS installed to Yes.</li> <li>u Update BIOS.</li> </ul>
F	<p>There is little possibility that the above causes concur combinedly. Improper CMOS configuration or Boot Mode not matching BIOS perhaps occurs with motherboards using AMI BIOS.</p>

## Displaying blue screen and Windows breaks down

L	After rebooting, PC displays blue screen with error message.
J	<ul style="list-style-type: none"> <li>u The free space in hard disks is limited. There is no cache for the HddGuarder.</li> <li>u Anti-Virus software or System Performance Administration software has been installed.</li> </ul>
@	<ul style="list-style-type: none"> <li>2 Recover the hard disk data, or set it to Automatic Recovery.</li> <li>2 Uninstall the HddGuarder, Anti-Virus software and System</li> </ul>

	Performance Administration software. <sup>2</sup> Reinstall it after the system is Ok.
--	---

## PC always requires to input SN password

J	HddGuarder provides special anti-evil uninstallation and haker affection, if HDDGaurder is not normally uninstalled, it will require to input SN password before enter into OS
@	<sup>2</sup> Only after inputting correct administrator password that is set by yourself. You could enter into OS.

## After installation of HddGuarder, the PC always reboot before Windows loading

J	HDDGaurder provides two kinds of Boot mode, each kind could meet difference BIOS setting.
@	<sup>2</sup> After reboot, Press <Ctrl+B> just after CMOS setting list while before OS loading, HDDGaurder Boot mode menu will appear. <sup>2</sup> Choose the other boot mode

## When I set hotkey menu as hidden, how could I have it shown back when I want to check the Hotkey operation

@	<sup>2</sup> After reboot, press <Ctrl+M> just after CMOS setting list while before OS loading, and reconfig HddGuarder to show Hotkeys menu.
---	---

