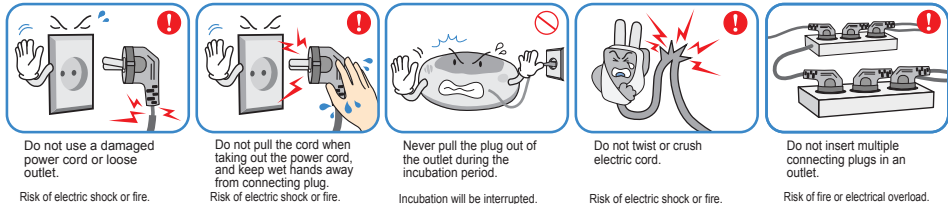


# New Rcom 20 USER'S MANUAL

PX-20(Standard) [www.R-com.co.kr](http://www.R-com.co.kr)

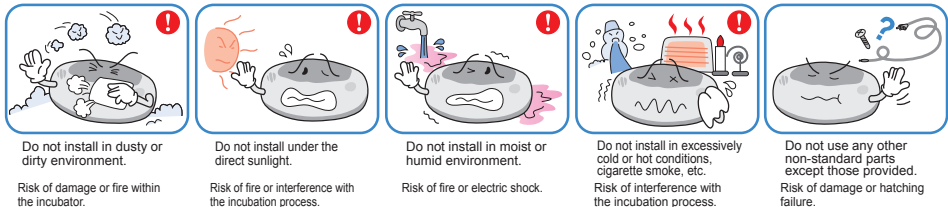
## 1. Safety Cautions

### Electrical hazards

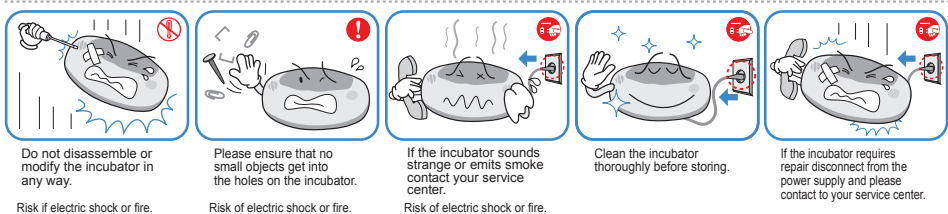
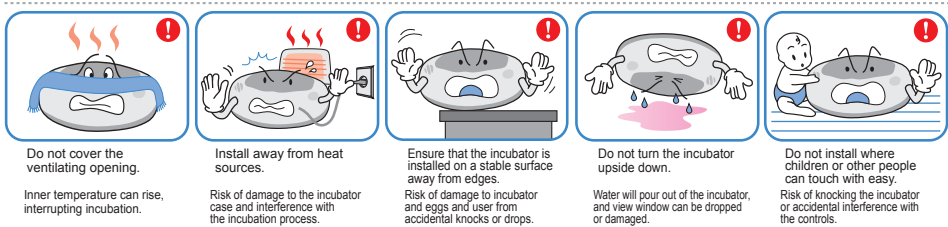


**CAUTION** Be careful the details below when you use.

### Setting Cautions



**CAUTION** Be careful the details below when you use.

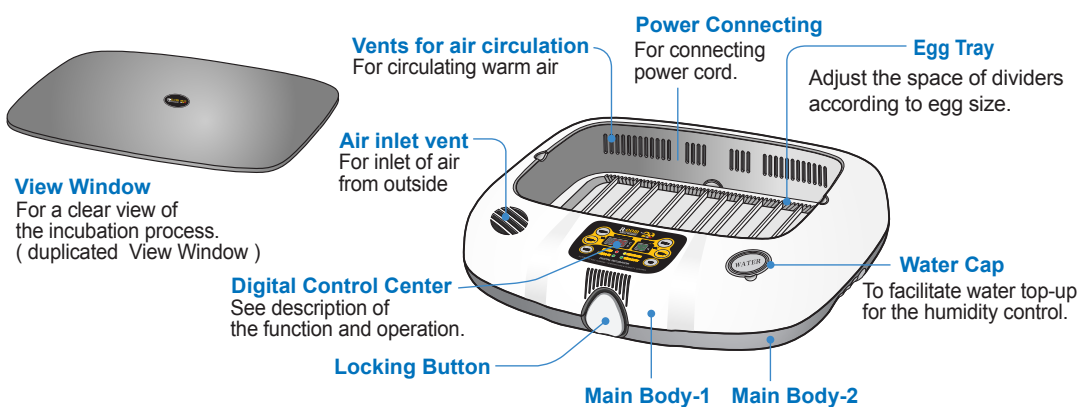


### Cleaning Cautions

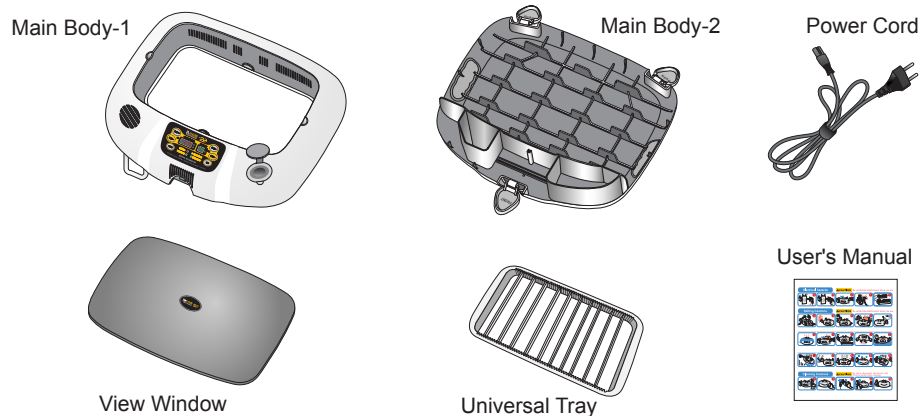


**CAUTION** Be sure to disconnect the electric cord from the outlet before cleaning.

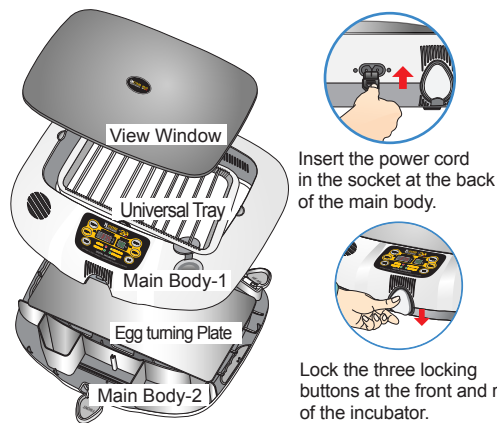
## 2. Identification of Parts



## 3. Basic Components

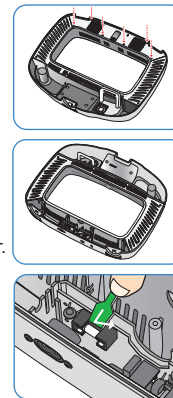


## 4. How to Assemble



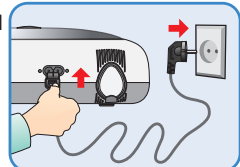
## 5. How to Replace Fuse

- When the machine failed to power on even if you plugged in, remove the fixing piece like the picture by screwdriver.
- You can find assembled PCB when open the cover. Remove faulty fuse with screwdriver.
- Replace with new fuse.  
( 250V 2.0A Ø5\*20mm )



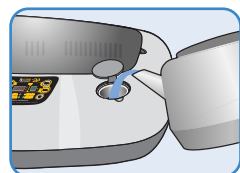
## 6. Before use

- Insert the electric cord in the connecting socket at the back of the Main body and put the power cord into the outlet. The display will come on.



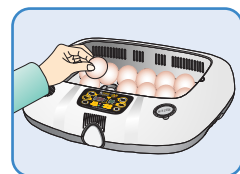
**Tip** There can be some odor the first time you use the incubator, that is normal.

- Open the watercap and fill the hole with clean water. And, refill water after 5 min. The styrofoam ball floats on and blocks the hole when full. (Humidity goes down temporarily, in case you refill water under incubation period.)



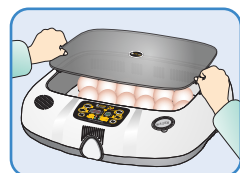
- You should stop to fill in the water as soon as the Styrofoam ball floats on. The ball will block the hole when full. After filling up with water, never shake or turn over the main body of the incubator.

**Tip** Check the water level every three days and refill fully on incubation period. The light for water top-up can remain for a while after you filled up.



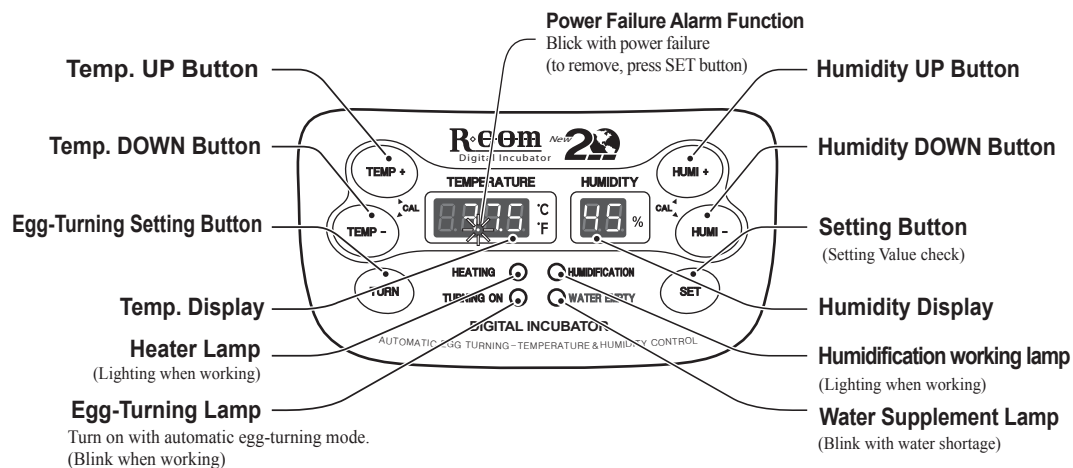
- Place your eggs and cover the view window.

**Tip** The egg to incubate must be a fertilized egg.



- You can turn off humidification function when you don't fill water with your incubation or when you need low humidity incubation under 40%. (Water supplement alarm will turn off with this function. Refer to "How to turn OFF humidification function.")

## 7. Operation Part



## 8. Easy Function Operation

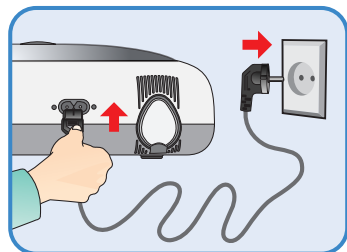
REFER TO "HOW TO START INCUBATION" FOR MORE INFORMATION.

Function	How to Operate	Explanation
Temp. Setting	SET → TEMP + or TEMP - HOLD	Setting of needed temp.
Humidity Setting	SET → HUMI + or HUMI - HOLD	Setting of needed humidity.
Egg-Turning Interval Setting	Default setting every 1 hour (Lamp: ON) → SET → HOLD → TURN → 2 Hours → 3 Hours → 4 times every 1 hour (Lamp ON) repeat	Egg-Turning Interval Setting as required
Egg-Turning Test	TURN → 5 Sec.	Egg-Turning Test (once)
Changing Cels. & Fahr.	TEMP + + TEMP - → CA → SET HOLD	Changing Cels. & Fahr.
Temp. Calibration	TEMP + + TEMP - → CA → or → SET 5 Sec.	How to calibrate temperature.
Humidity Calibration	HUMI + + HUMI - → CA → or → SET 5 Sec.	How to calibrate humidity.
Initialization (Factory setting)	SET → HOLD → POWER IN → rSt	Initialization
How to OFF Humidification Function	SET → HOLD → HUMI - → 20%	Set Humidity as 20%

※ If you want to change setting value, keep pressing "SET" button and change the value.

## 9. How to start incubation

- ▶ If you connect incubator with power cord, it starts incubation with existing temperature and humidity.  
( Factory default setting-Temp.:37.5℃/ Humidity: 45% )
- ▶ Be sure to turn on when incubation started, and turn off before 3 days of hatching.  
( Refer to 8. Easy operation )



**Tip** There can be some odor the first time you use the incubator, that is normal.

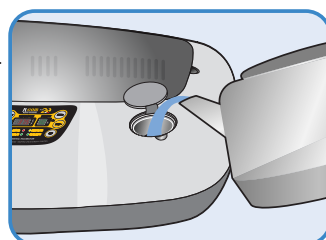
## 10. How to Terminate Incubation

- ▶ After all eggs are hatched, you should take off the power cord for incubation termination.

If you leave the incubator alone without drying water after high humidity incubation, the water inside of incubator condenses and makes waterdrop at the LCD display or control device. For preventing this problem, disassemble main body 1 and 2, and dry completely before storing. (You can dry the incubator as operating the incubator for about 1 to 2 hours after removing water.)

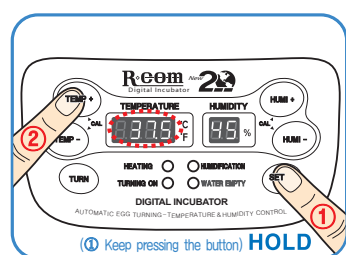
## 11. How to Supply Water for Humidity Maintenance

- ▶ Check the water level every three days and refill fully on incubation period.  
The styrofoam ball floats on and blocks the hole when full.



**!** Check water level every three days on incubation period, and refill fully with warm water.

## 12. How to set Temperature



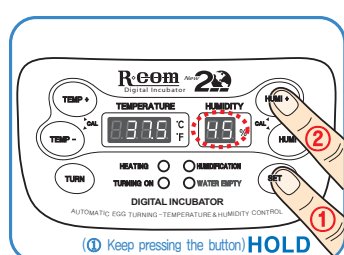
- ▶ In a state of **SET** button is pressed, adjust the temperature you want with **TEMP +** or **TEMP -** button.

Temperature setting will be completed when you remove your finger from the **SET** button, and present temperature of the incubator inside will be indicated.

**Tip** If you set the incubator under a direct ray of light or too cold spot, the incubator temperature can be higher or lower than setting temperature.

**Tip** If you press **SET** button, the present setting temperature and humidity will be indicated and, if you remove your finger from the button, the present inner temperature and humidity indicated.

## 13. How to set Humidity



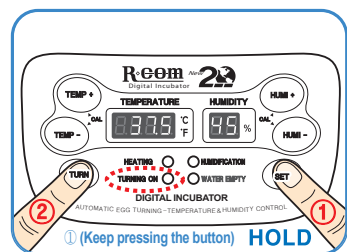
- ▶ In a state of **SET** button is pressed, adjust the humidity you want with **HUMI +** or **HUMI -** button.

Humidity setting will be completed when you remove your finger from the **SET** button, and present humidity of the incubator inside will be indicated.

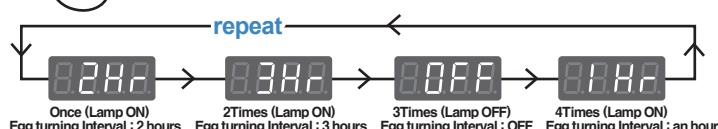
- ▶ Be sure to set humidity 65%~70% from 1~2 days before hatching.

**Tip** Temperature and humidity can be different from normal setting levels according to the surrounding environment.

## 14. How to Set Egg Turning ON / OFF



- ▶ **Egg Turning Test** : If you press **TURN** button for about 5 seconds, egg turning test will be effected once.
- ▶ In a state of **SET** button being pressed, press **TURN** button then the setting will be changed as required.

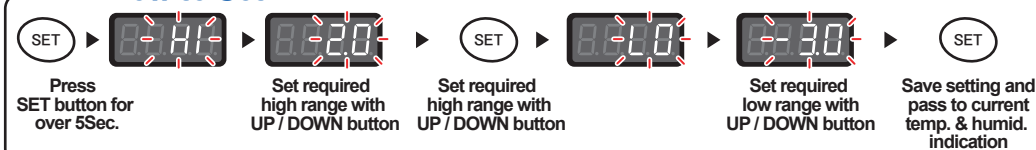


**!** Be sure to set **TURNING OFF** 3 days before hatching.

## 15. How to Set Abnormal High or Low Temperature Alarm

- ▶ What is Abnormal High or Low Temperature Alarm?  
It is alarm sounds when incubator temperature is higher or lower than setting value because of various reasons such as room temperature change or disorder of temperature controlling system.

### ※ How to Set



\* Max. abnormal temp. alarm limit (0.0℃ ~ 5.0℃ Default Setting:2.0℃)  
\* Min. abnormal temp. alarm limit (0.0℃ ~ -5.0℃ Default Setting:-3.0℃)

## 16. How to Turn ON/OFF Humidification Function

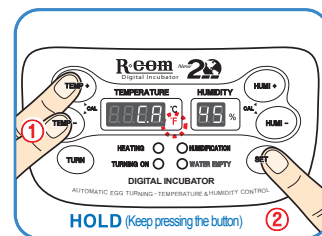
- ▶ In a state of **SET** button being pressed, press **HUMI-** button to adjust humidity at 20% and, then, humidification function will be **OFF**.  
On the contrary, if you adjust humidity above 20%, its function will be **ON**.

## 17. Change Cels.&Fahr.

- ▶ Press **TEMP +** button and **TEMP -** button

at the same time, and **CA** will show on Temp. display.

Then, press **SET** button. It will change. **℃** repeat **℉**



## 18. How to Calibrate Temp.(Humidity)

**!** This calibration function is to reset the temperature and humidity of the incubator to correct values using your thermometer and hygrometer. It is better not to calibrate the incubator as normal thermometer and hygrometer are not reliable than incubator factory setting.

**Tip** How to calibrate : Place the thermometer or hygrometer at 5 cm above the bottom of the tray and operate it for one hour before starting its calibration.

\* Be sure to check **!** CAUTIONS before you calibrate temperature or humidity.

- ▶ How to Calibrate Temp. (or Humidity):  
Temp. (Humidity) Calibration: Press **TEMP+**(or **HUMI+**) and **TEMP-**(or **HUMI-**) button at the same time then "CA" will show on the display. Keep pressing these buttons for about 5sec. then Temp. (or humidity) display will blink. Here, set the required temperature (or humidity) with **TEMP+(HUMI+)** or **TEMP-(HUMI-)** button, and press "**SET**" button.

### - After Calibration -

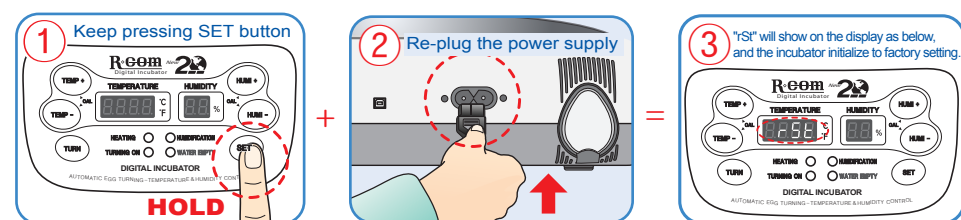
If you can not rely on your thermometer or hygrometer, you can initialize the incubator to factory setting. (Refer to Incubator Initialization)

## 19. Incubator Initialization

( **ALL RESET** ) For returning to the factory setting

It is for initializing the incubator setting or calibration to factory setting when you handle improperly so that the value changed.

Unplug the power supply. And, hold **SET** button as picture①. Re-plug the power supply as picture②. Then, **rSt** will show on the display, and the incubator will be initialized to factory setting.

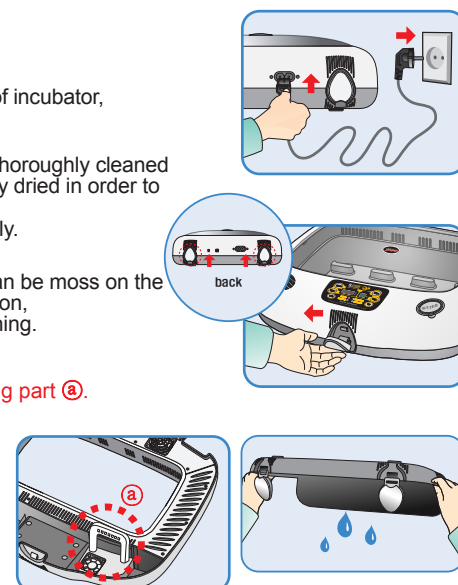


## 20. How to Clean after Hatching

- ▶ Pull out the electric cord from connecting jack, and also take out the plug from the outlet.
- ▶ Unlock three of locking buttons at the front and back of incubator, and disassemble the incubator.
- ▶ Disassemble the incubator. The bottom part shall be thoroughly cleaned with water and dried. The upper parts shall be naturally dried in order to remove moisture inside of the incubator. Assemble the parts in the reverse order of disassembly.
- ▶ In case of you operate humidification function, there can be moss on the humidification heating part ③. It doesn't effect in function, and you just need to clean it with soft brush after hatching.

**!** Do not inflict an impact to the humidification heating part ③. Or, it will be damaged.

**!** Do not clean the product with organic solvents such as benzene and paint thinner.



## 21. Specification

Power	AC 100V~120V, 50/60Hz / AC 220V~240V, 50/60Hz
Temp. limits	20℃ ~ 42℃ (68℉ ~ 107.6℉)
Temp. Accuracy	± 0.5℃
Working Temperature	Ideal : 22℃ ~ 25℃ / Min. 20℃ / Max. 26℃
Humidity Limits	20% ~ 70% ( It can be changed according to the conditions )
Humidity Accuracy	± 5%
Power Consumption	Average 48W
Capacity	Universal Tray 10란~50란
Net Weight	4.35 Kg
Size	(W)500×(L)410×(H)160 (mm)
Fuse Standard	250V 2.0A (Ø5×20mm)

Visit our web site (www.r-com.co.kr) for more information on our products and other informations.  
Update of information : download the necessary information from resource room in Rcom homepage.

R-com digital incubator is designed for easy and convenient use. For the improvement of the functions of the incubator, design, how to use, etc. can be changed without notice in advance.

**AUTO ELEX CO., LTD.**  
www.R-com.co.kr  
www.autoelex.com

• COMPANY : #612 DukAm-Ri, JuChon-Myeon, GimHae-City, GyeongNam, KOREA  
• TEL : 82-55-337-2560 (Direct to sales team)  
: 82-55-337-2561-3, 2567 (Office)  
• FAX : 82-55-337-2568  
• E-MAIL : auto@autoelex.com ( Sales team )