

Made for



iPod



iPhone



iPad

EAR FORCE

i30

## WIRELESS MEDIA HEADSET **USER GUIDE**



**TURTLE  
BEACH™**

 **Bluetooth**



**Congratulations on your purchase of the EAR FORCE i30 headset from Turtle Beach.**

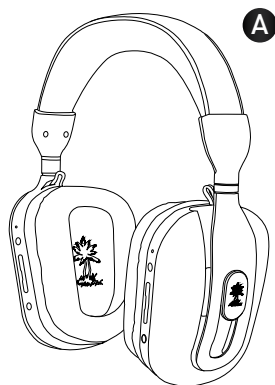


Designed for Apple® products, the i30 supports music, movies, gaming and chat from Mac®, iPad®, iPhone® and iPod touch® devices. Turtle Beach brings over 35 years of expertise to transforming your listening experience. **Welcome to Turtle Beach!**

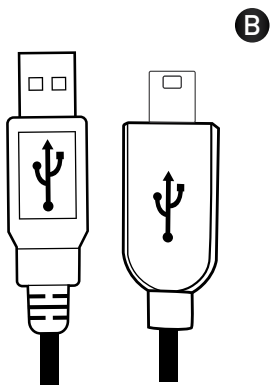
To enhance your experience, download the Turtle Beach OSX and iOS apps:  
**<http://www.Turtlebeach.com/i30>**

# In the Box

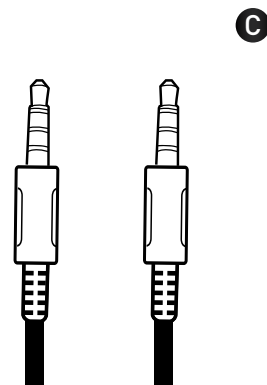
For our Knowledgebase and Technical Support please visit [turtlebeach.com/support](http://turtlebeach.com/support)



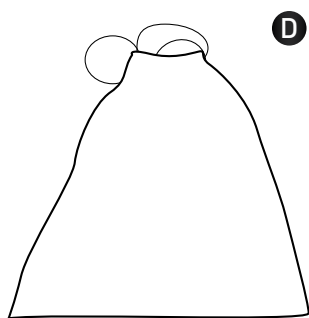
i30 Headset



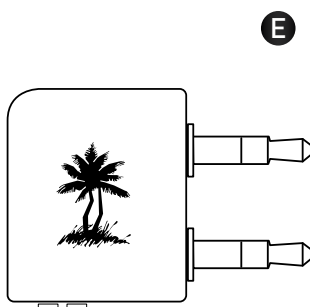
Headset Charging Cable



Mobile Adapter Cable



Cloth Carry Bag



Airline Adapter Plug



Turtle Beach Sticker



## Table of Contents

About the i30	P5
Parts and Controls	P6
Initial Setup	P8
Bluetooth Setup and Operation	P9
Wired Setup	P16
Active Noise Cancellation	P17
Adjusting Sound	P18
Chat VoIP Setup	P20
Charging the Headset	P21
Bluetooth Reference Guide	P22
Specifications	P23
Troubleshooting Tips	P24
Important Safety Information	P25
Compliance / Conformity	P26
Warranty	P30

# About the i30

The i30 is a sophisticated media headset designed to unlock the audio potential of Apple® Mac® computers and iPad®, iPhone® and iPod touch devices. To get the most from your i30, please take a few moments to review this introduction.

## Overview

Hear your Mac, iPad, and iPhone as they were meant to be heard with the Turtle Beach Ear Force i30 media headset. Bluetooth® technology enables you to stream audio from your devices, chat and answer mobile phone calls. You can also listen and talk with the supplied mobile adapter cable.

- **Wireless audio for Mac OSX.**

Unlocks the audio potential of your Mac via Bluetooth connection. Reproduces music with greater fidelity, movies with greater immersion and games with greater impact.

- **Simultaneous connection to iOS devices.**

Answer calls or stream music without disconnecting from your computer. Pairs to iOS devices via Bluetooth or connects via supplied cable.

- **Ultra portable.**

Take your headset anywhere connected to your mobile device in wired mode.

- **Superb fidelity.**

50 mm speakers deliver pristine sound quality.

- **Comfortable, lightweight design.**

Soft, padded ear cushions and headband for hours of comfort.

- **Active Noise Cancellation.**

Silences background noise, an especially welcome relief on long flights.

- **Enhanced entertainment and communications.**

The i30 delivers better sounding music, video, chat and internet calls from services like Pandora™, Netflix®, Skype®, and more.

- **Four audio presets.**

Quickly customize the sound to match your media.

- **Convenient voice prompts.**

To indicate system status.

- **Invisible microphone.**

Instead of an obtrusive mic boom in front of your mouth, a dual mic array captures your voice with noise filtering technology.

- **Morph your own voice.**

Built-in microphone presets include High Morph, Low Morph and Voice Reverb.

- **Long-life rechargeable battery.** Built-in battery delivers up to 15 hours of continuous play. You can even charge while playing.

- **Bluetooth volume control.** Provides personalized level adjustment.

# Parts and Controls

## Status LED

Off = Power off  
Flashing Red: Noise Cancellation on.  
Flashing White: Noise Cancellation off.

## Power/Active Noise Cancellation (ANC) Button

(See table on right)

## Audio Preset Up

Cycles through audio presets, which the headset announces. (See table on right)

## Audio Preset Down

Cycles through audio presets, which the headset announces. (See table on right)

## Mic Settings

Cycles through mic settings, which the headset announces.  
(See “Adjusting Sound” on pg 18 for details.)

Left Earcup

### \*POWER & ANC BUTTON

Headset Status	Button Press	Function
Power Off	Single Press	Power On
Power On	Single Press	ANC On
ANC On	Single Press	ANC Off
Power On	Long Press	Power Off

(For details on ANC, see “Active Noise Cancellation” on pg 17.)

### AUDIO PRESETS

**Preset 1:** Flat  
**Preset 2:** Bass Boost  
**Preset 3:** Treble Boost  
**Preset 4:** Bass and Treble Boost

(See “Adjusting Sound” on pg 18 for preset details)

## Bluetooth LED

Off = Bluetooth Off  
Single Blue or Purple  
Flash = Bluetooth On.  
Blue/red flashing = Bluetooth pairing

## Bluetooth Button

(See table on right)

## Bluetooth Volume Up

Increases volume of connected Bluetooth device.

## Bluetooth Volume Down

Decreases volume of connected Bluetooth device.

## Mic Mute

Press to turn off the microphone.  
Press again to turn it back on.

Right Earcup

### BLUETOOTH BUTTON

Headset Status	Button Press	Function
Bluetooth Off	Single Press	Bluetooth On
Bluetooth On	Long Press	Bluetooth Off
Bluetooth On/ Incoming Call	Single Press	Call answer
Bluetooth On/In Call	Single Press	End Call

(See “Bluetooth Reference Guide” on pg 22 for more details)



# Parts and Controls

## Bottom view of headset

### Headphone cable jack.

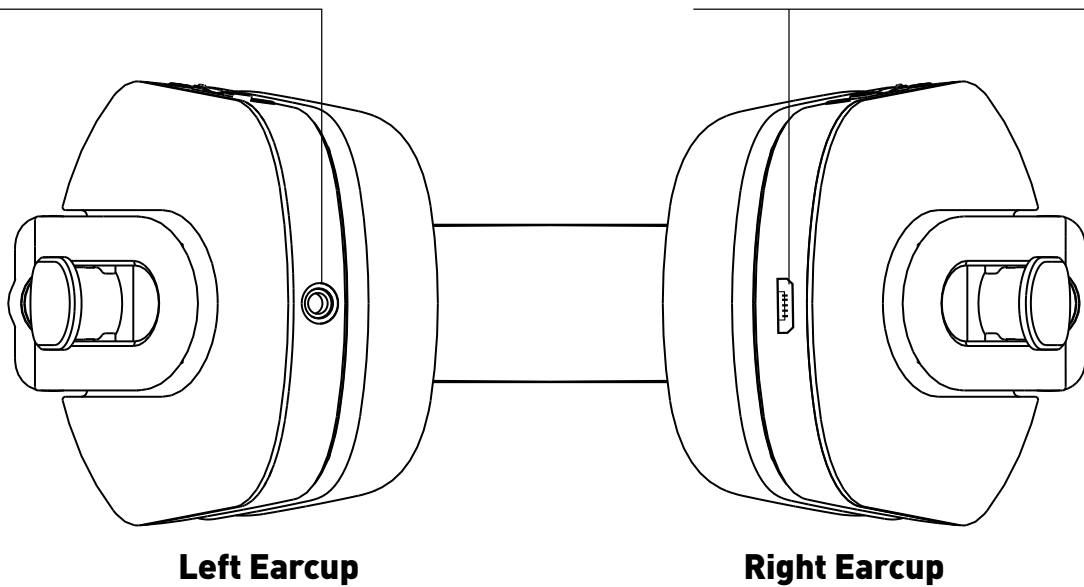
Plug directly into other music sources via the supplied mobile adapter cable.

See **“Wired Setup”** on pg 16 for details.

### Charging port.

Charges the i30 from any standard USB port via the supplied headset charging cable.

See **“Charging the Headset”** on pg 21 for details.



# Initial Setup

## Charge the battery

You can charge the i30 headset battery with the supplied headset charging cable. Connect the USB plug to any standard USB port and connect the micro USB plug into the charging port in the right ear cup.

The i30 headset is designed to power off to conserve battery after five minutes of silence if Bluetooth is not active.





# Bluetooth Setup and Operation

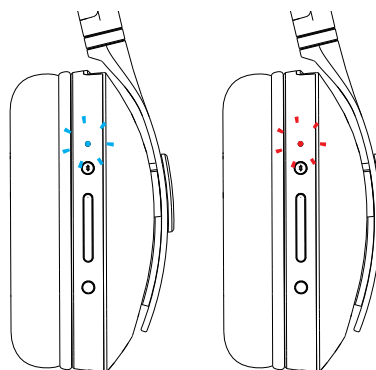
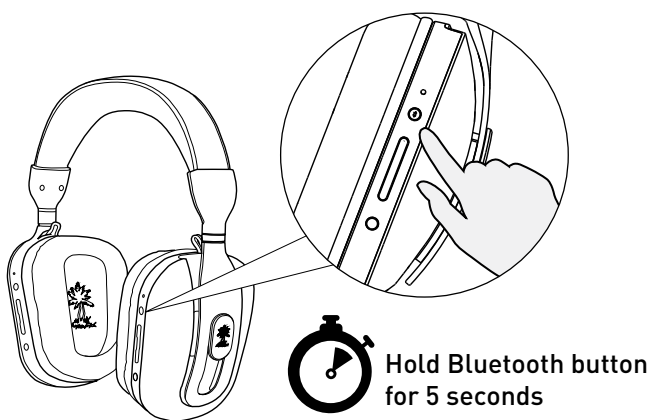
The i30 incorporates Bluetooth technology that enables you to answer calls on your mobile phone, enjoy stereo music, movie soundtracks, and games or chat.

**NOTE:** For maximum battery life, turn off the Bluetooth radio if you're not using these Bluetooth features.

## Pairing an iPhone/iPad/iPod Touch

The i30 Bluetooth feature must be powered off before you start. If Bluetooth is on, press and hold the Bluetooth Button until the headset announces “**Bluetooth Powering Off.**”

- 1 On the i30, press and hold the Bluetooth Button for five seconds until the flashing Bluetooth LED is alternating blue and red.



Flashing Bluetooth LED is alternating blue and red.

Release the button. A voice prompt in the i30 headset will confirm “**Bluetooth Pairing.**”

- 2 On your iOS device, select **Settings.**



# Bluetooth Setup and Operation

3

In the **Settings** menu, select **Bluetooth** and turn **Bluetooth ON**, if it isn't already.



4

Select **Turtle Beach i30 Media Headset** from the list of devices. When you see **“Connected”**, then pairing is complete. The Bluetooth LED on the i30 headset will flash blue.



**NOTE:** For your convenience, a status icon for i30 battery life will be displayed on the iOS device screen, next to the iOS device's battery life icon.

# Bluetooth Setup and Operation

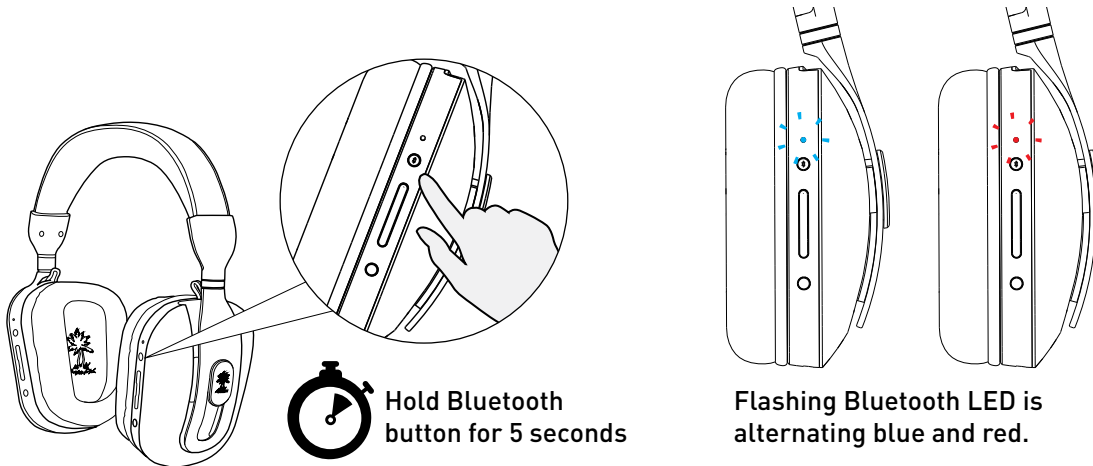
## Pairing non-iOS phones

The i30 can also be paired to non-iOS phones that feature Bluetooth radio; however some i30 features such as music playback functions and battery life display may not be available.

## Pairing to a Mac

The i30 connects to a Mac wirelessly via Bluetooth radio.

- 1 On the i30, press and hold the Bluetooth Button for five seconds until the flashing Bluetooth LED is alternating blue and red.

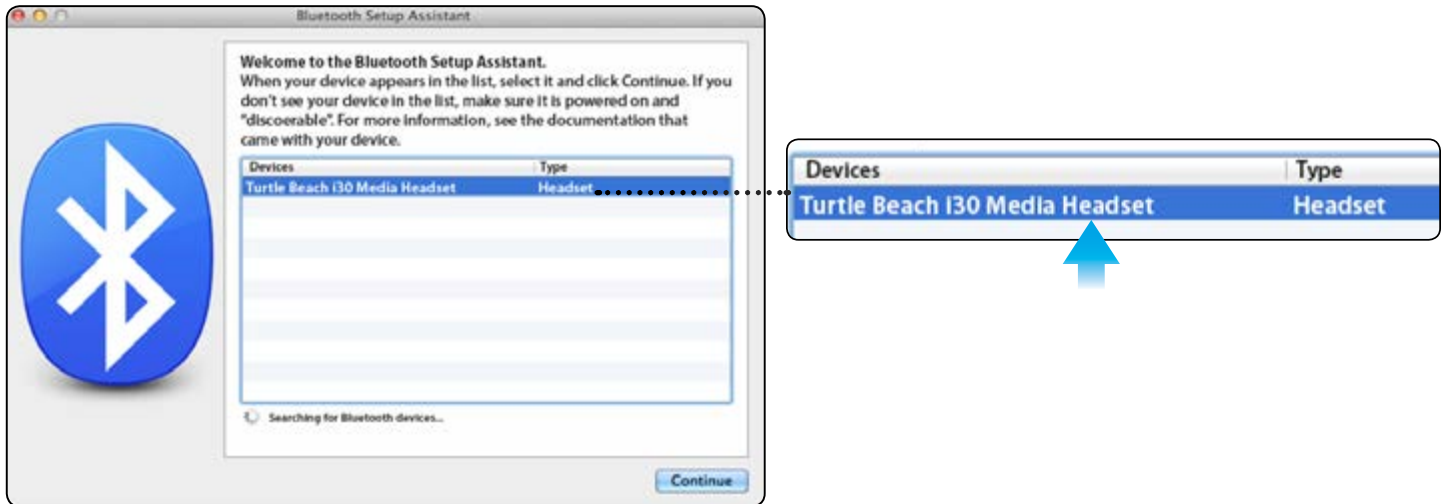


- 2 In the top right corner of your Mac screen select the **Bluetooth** symbol and select “**Set Up Bluetooth Device**”.

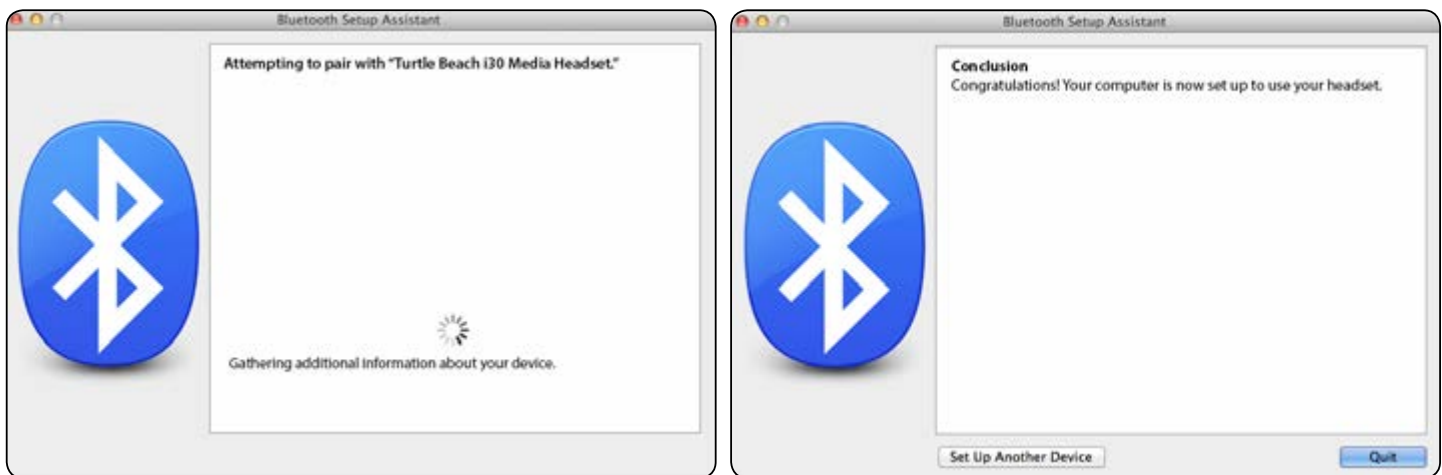


# Bluetooth Setup and Operation

- 3 Select “**Turtle Beach i30 Media Headset**” from the list of available Bluetooth devices.



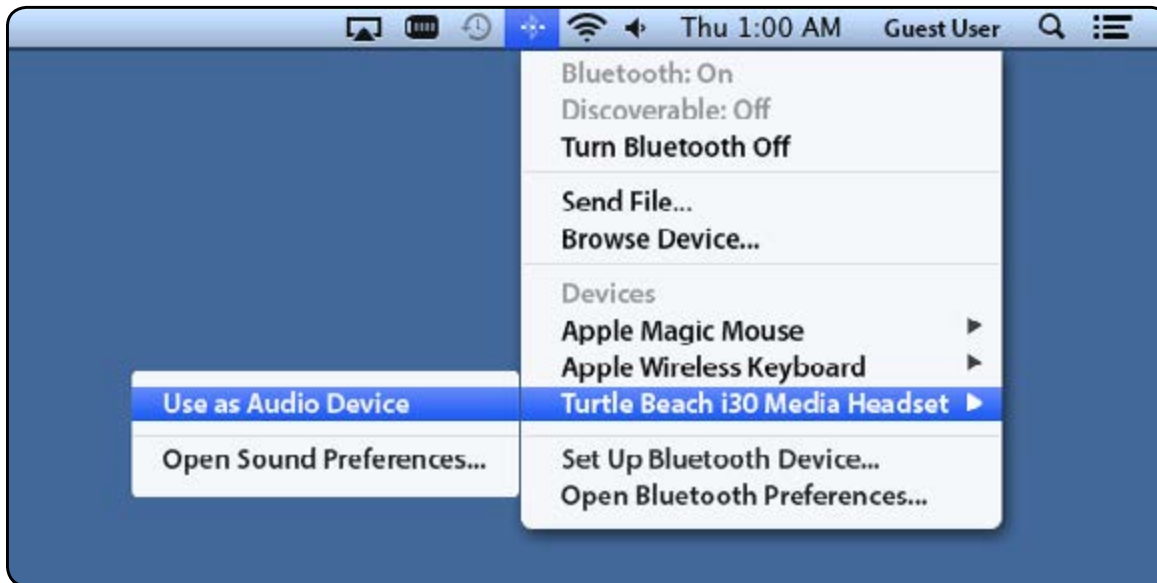
- 4 Your Mac will search for your device and will prompt you once the device is paired. A voice prompt in the i30 headset will confirm “**Bluetooth paired.**” Click “**Quit**” once you are done.



# Bluetooth Setup and Operation

5

Go to the top right corner of your Mac screen, select the **Bluetooth** symbol, then select “**Turtle Beach i30 Media Headset**” and choose “**Use as Audio Device**”.



# Bluetooth Setup and Operation

## Dual Pairing

The i30 can be simultaneously paired to two Bluetooth-enabled devices at once. For example, you can pair the i30 to a digital music player or tablet and your mobile phone at the same time. If your mobile phone is also a digital music player, you can stream music to your headset as well. The i30 will automatically remember the last two paired devices upon powering on.

**NOTE: Only one Bluetooth device can be active on the headset at a time.** For example, if you are making a call with the headset while streaming music from a second device, the music will be turned off until the call is over.

## Making Calls with your iPhone

Once the i30 is successfully paired with your iPhone, you can use the headset to make and receive calls. When idle or on a call the Bluetooth LED will blink Blue.

If you want to...	Then...
Activate voice dialing.	Press the Bluetooth button three times.
Use iPhone keys to make a call.	Double-click Bluetooth button.
Redial last number.	Double-click Bluetooth button.
Turn off the microphone.	Press the Mic Mute button. Press again to turn the microphone back on.
Adjust the volume.	Press the Bluetooth Volume Up and Down buttons.
End a call.	Press the Bluetooth button once.

**NOTE: Media Audio will be lowered automatically during the call.**

## Receiving Calls

When the i30 Bluetooth is powered on and there is an incoming call you will hear a musical chime or your default phone ring tone.

If you want to...	Then...
Accept a call.	Press the Bluetooth button.
Reject a call.	To send the call directly to your voicemail, press and hold the Bluetooth button for three seconds until you hear a beep. You can also do nothing, which will send the call to voicemail after the programmed number of rings.
End a call.	Press the Bluetooth button.

# Bluetooth Setup and Operation

## Streaming music from iOS devices

The i30 not only delivers superb reproduction of music from your iPhone, iPad or iPod touch devices via Bluetooth streaming, it also controls those devices. When listening to music from your iOS device the Bluetooth LED will blink Purple.

If you want to...	Then...
Play/Pause.	Press the Bluetooth Button once.
Skip to the next track.	Press the Bluetooth Button twice.
Skip back one track (or to beginning of current song).	Press the Bluetooth Button three times.
Fast forward.	Press the Bluetooth Button twice and hold on the second press.
Rewind.	Press the Bluetooth Button three times and hold on the third press.
Adjust the volume.	Press the Bluetooth Volume Up and Down buttons.

## Clear Bluetooth pairing history

The i30 automatically saves pairing information for the last two connected Bluetooth devices. To clear this pairing history, perform the following steps.

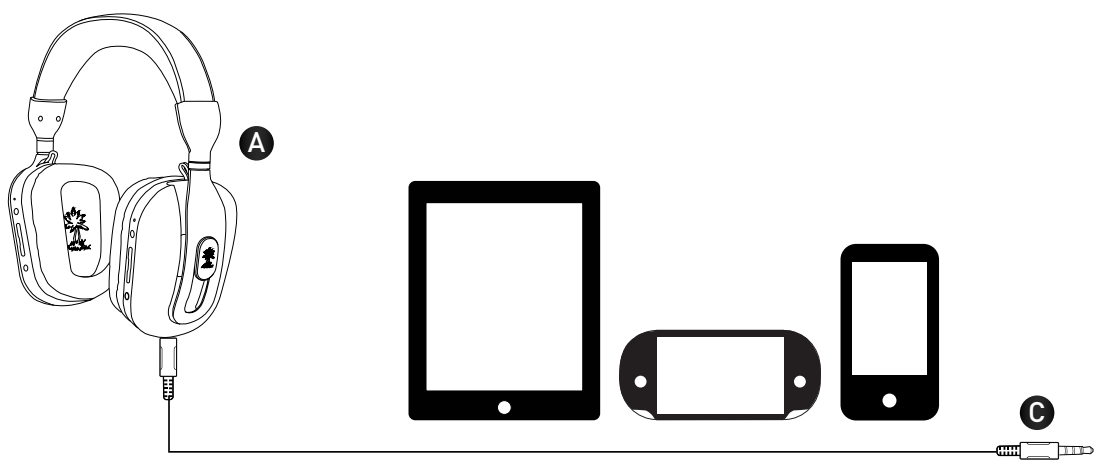
1. The i30 Bluetooth feature must be powered off before you clear the history. If Bluetooth is on, press and hold the Bluetooth Button until the headset announces "Bluetooth Powering Off."
2. Press and hold the Bluetooth Button together with the Bluetooth Volume Up Button until the Bluetooth LED blinks Red three times.



# Wired Setup

You can plug directly into other music sources using the supplied mobile adapter cable and adapter plugs. Plug one end into the Headphone cable jack on the bottom of the right ear cup. There are three options for connecting the other end.

**Note: Make sure that both ends of the cable are securely connected for best performance.**

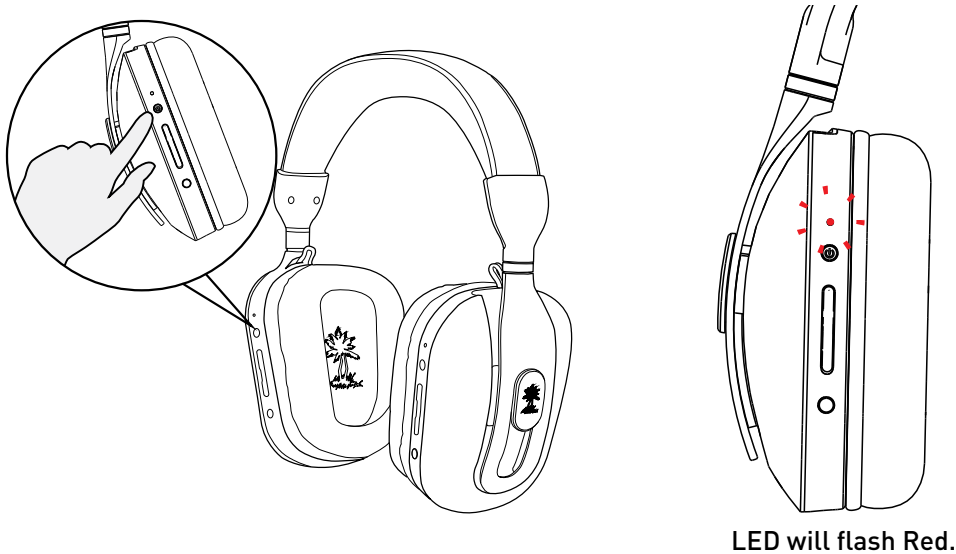


If you want to...	Then...
Listen to an iPhone, iPad or other digital music player or tablet.	Plug the cable directly into the headphone jack of the mobile device.
Listen to commercial airline entertainment.	Attach the supplied airline adapter plug and plug into the headphone jack of the airline seat. <b>NOTE: To comply with airline safety requirements, be sure that i30 Bluetooth operation is turned off.</b> <b>See “Summary of Bluetooth Reference Guide” on page 22 for details.</b>

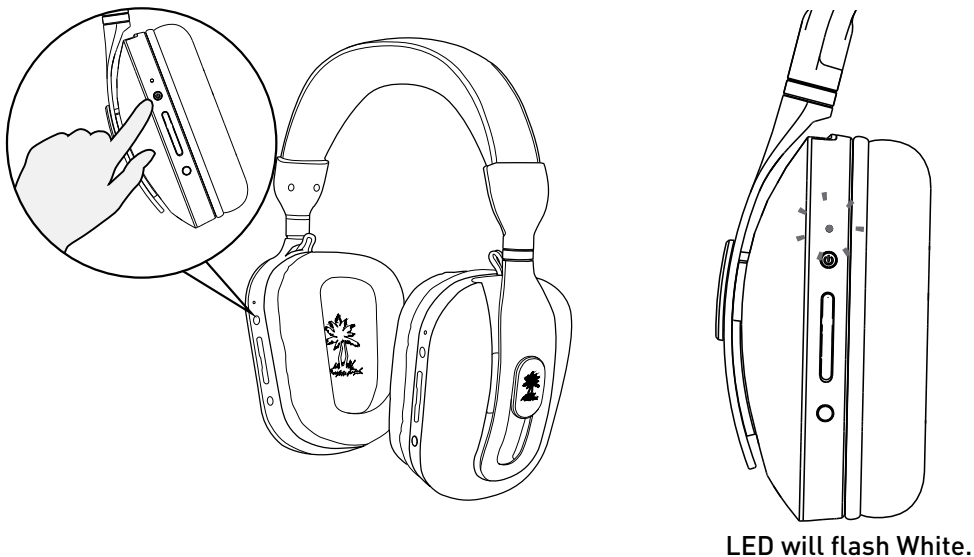
# Active Noise Cancellation (ANC)

Active Noise Cancellation suppresses ambient noise, especially low-frequency noise such as aircraft engines and road noise. The system works by sensing outside noise with the built-in microphones and sending an equal-but-opposite signal into the headphones. The soft cushions of the i30 also help block external sound, providing an added level of noise reduction.

- 1 To turn on **Active Noise Cancellation (ANC)** when the headset is on, press the **Power/ANC Button**. The Status LED will flash Red.



- 2 To turn off **ANC**, press the **Power/ANC Button** again. The status LED will flash White



## Adjusting Sound

If you want to...	Then...
Adjust volume.	Use the Bluetooth Volume Up and Down buttons.
Turn the microphone on or off.	Press the Mic Mute button. To turn the microphone on again, press the Mic Mute button.
Turn Active Noise Cancellation (ANC) on or off.	<ul style="list-style-type: none"> <li>When the headset is on, press the Power/ANC Button. The Status LED will flash Red.</li> <li>To turn off ANC, press the Power/ANC Button again. The Status LED will flash White.</li> </ul>

If you want to...	Then...								
Optimize the sound.	<p>The Audio Preset Up and Down buttons cycle through the following modes, each of which is confirmed by voice announcement.</p> <table> <tr> <td><b>Preset 1</b></td><td>Flat equalization, for the most accurate sound</td></tr> <tr> <td><b>Preset 2</b></td><td>Bass boost, for the extreme low frequencies</td></tr> <tr> <td><b>Preset 3</b></td><td>Treble boost, for the extreme high frequencies</td></tr> <tr> <td><b>Preset 4</b></td><td>Bass and treble boost</td></tr> </table>	<b>Preset 1</b>	Flat equalization, for the most accurate sound	<b>Preset 2</b>	Bass boost, for the extreme low frequencies	<b>Preset 3</b>	Treble boost, for the extreme high frequencies	<b>Preset 4</b>	Bass and treble boost
<b>Preset 1</b>	Flat equalization, for the most accurate sound								
<b>Preset 2</b>	Bass boost, for the extreme low frequencies								
<b>Preset 3</b>	Treble boost, for the extreme high frequencies								
<b>Preset 4</b>	Bass and treble boost								
Control the mic sound.	<p>The dual mic array of the i30 enables precise audio pickup without a mic boom in front of your mouth. It also provides special audio effects that you can cycle through using the Mic Settings button.</p> <p> <b>Mic 1</b> Flat  <b>Mic 2</b> High Morph uses the dual mic array to create a chipmunk-like sound  <b>Mic 3</b> Low Morph uses the dual mic array to create a monster-like sound  <b>Mic 4</b> Voice Reverb         </p>								

## Adjusting Sound

Bring the controls to your fingertips. With the Ear Force Audio Hub, you can change your audio presets as well as upgrade your headset to the latest firmware and much more with just a tap.

# DOWNLOAD THE APP

[turtlebeach.com/i30](http://turtlebeach.com/i30)

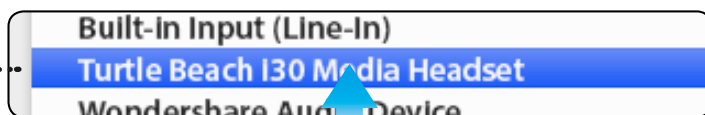
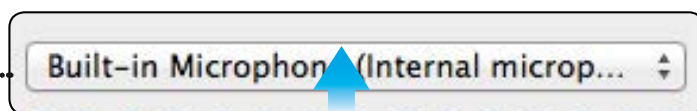


# Chat / VoIP Setup

## Setting your chat

The i30 supports chat and Voice over IP (VoIP) communications. Chat program screens may differ depending on the operating system.

- 1 In your chat program, open your **audio/video** preferences. Select “**Turtle Beach i30 Media Headset**” for Microphone, Ringing and Speakers.



**Note:** After your chat or call is completed, you will need to set your headset back to stereo.

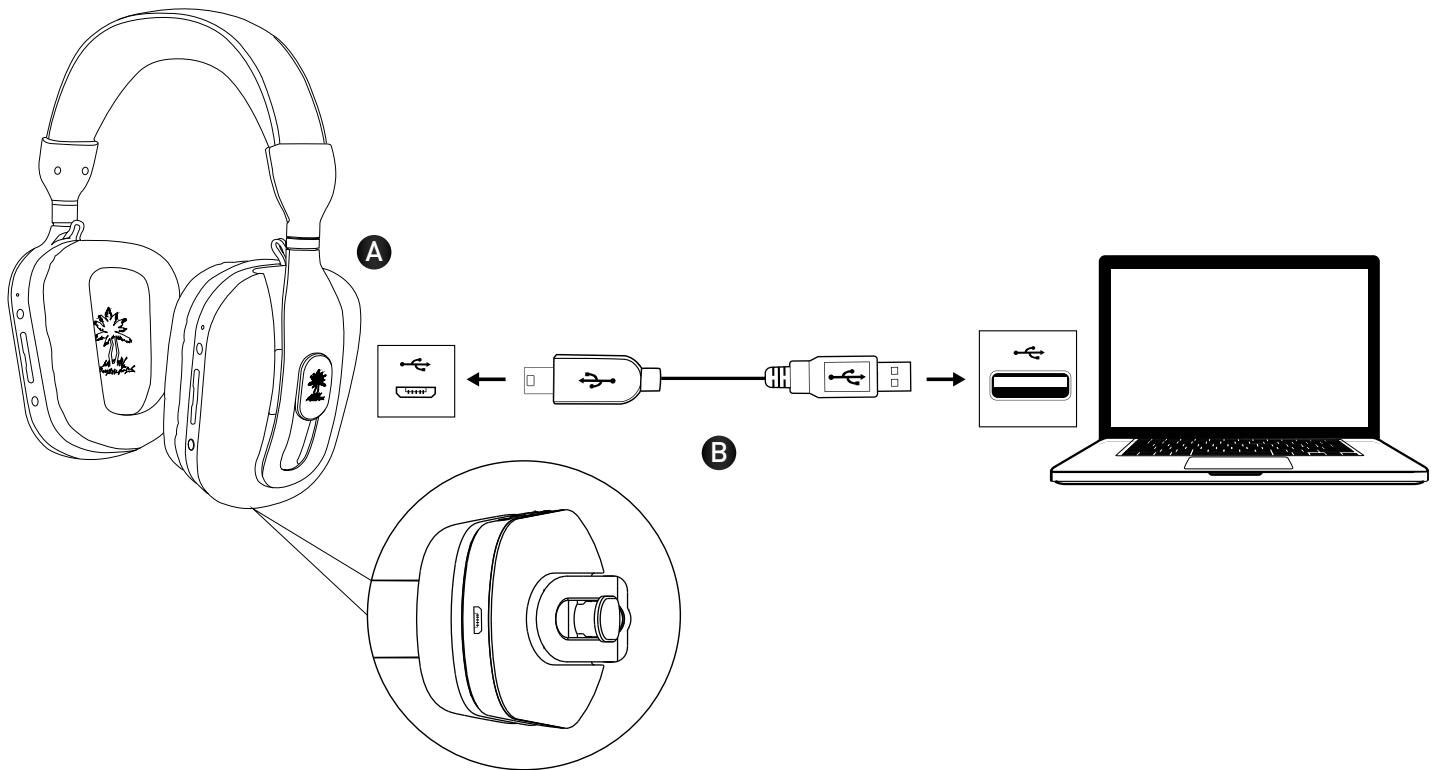


Go to the top right corner of your Mac screen, option-click the Volume symbol, and select “**Turtle Beach i30 Media Headset Stereo**”.

## Charging the Headset

The i30 headset is designed to deliver up to 20 hours of continuous play on a single battery charge. To charge the i30, connect the headset charging cable from any standard USB port to the charging port on the right ear cup. You can even charge while continuing to use the headset.

**Note: When charging, the LED on the Right Earcup will be solid green. Once charging has completed the LED will turn off.**



# Bluetooth Reference Guide

## Summary of Bluetooth Button functions

The Bluetooth Button performs a variety of functions depending on the current state of Bluetooth operation, plus how you press the button (single, double, triple or long key press).

Current Bluetooth State	Single Key Press	Double Key Press	Mid/Triple Key Press	Long Key Press
Powered Off			Power On (After BT power on, the i30 automatically attempts to reconnect to last 2 devices for 1 minute)	Pairing Mode
Pairing Mode				Power Off
Standby	Connect to last device			Power Off
Connected to device		Redial	Activate Voice Recognition (Siri)	Power Off
Connected to 2 devices		Redial	Activate Voice Recognition (Siri)	Power Off
Outgoing Call (Headset)	End Call		Transfer audio to Mobile Device	Power Off
Call Setup	Cancel Call Setup			Power Off
Outgoing Call (Device)	End Call		Transfer audio to Headset	Power Off
Incoming Call	Answer Call		Reject Call	Power Off
In Active Call (Headset)	End Call		Transfer audio to Device	Power Off
In Active Call (Device)	End Call		Transfer audio to Headset	Power Off
In Active Call w/ second incoming call	Hold current call and accept incoming call	End current call and answer incoming call	Reject Incoming Call	Power Off
2 Active Calls	End current call and accept held call		Hold current call and accept held call	Power Off
A2DP Streaming ( <b>Note: Requires AVRCP</b> )	Play/Pause	Next Track	Previous Track	Power Off
iTunes Functions (OSX)				
iTunes Off/Closed	Open iTunes			
Open and not playing	Play/Pause	Next Track	Previous Track	
Streaming Audio	Play/Pause	Next Track	Previous Track	
iOS A2DP Functions				
Audio on iOS Device	Play/Pause	Next Track (Hold to Fast Forward)	Previous Track (Hold to rewind)	



# Specifications

## Headset

- 50mm diameter speakers
- Headset frequency response: 20 Hz - 20 kHz,  $\leq 120$  dB SPL @ 1 kHz
- Dual condenser microphones: frequency response 50 Hz – 50 kHz
- Headset amplifier THD:  $\leq 1\%$
- Bluetooth 3.0 +EDR
- USB port for recharging with supplied USB charging cable
- Rechargeable lithium polymer batteries with up to 20 hours continuous operating time
- Automatic shut down after approx. 5 minutes of carrier loss or silence to conserve battery power

## Compatibility:

- Mac OS X 10.8 or Higher
- iOS 6.0 or Higher

Made for iPhone 5S, iPhone 5C, iPhone 5, iPhone 4S, iPhone 4, iPad Air  
iPad Mini with Retina Display, iPad (4th generation), iPad mini  
iPad (3rd generation), iPad 2, iPod touch (4th - 5th generation)



# Troubleshooting Tips

## No Sound

Possible Cause...	Solution
Bluetooth volume control turned down	Press the Bluetooth Volume Up button.
Headset is off	Check that the headset is powered on. The Status LED on the left ear cup should be flashing either red or white.

## Voice Chat Drops

Most in-game voice chat drops are caused by network congestion or “lag.” They usually subside after a few moments so please be patient. In extreme cases, you may need to leave the game and return to reset the chat function. If you use a wireless internet connection, low signal strength from your modem/router can make the voice chat malfunction. For best results, we recommend a wired connection from your modem/router to your Mac.

## Bluetooth not working

Try using the Bluetooth pairing instructions (**See “Bluetooth Operation and Setup” on page 9**) to pair your headset to a different Bluetooth-ready mobile phone than the one you usually use. With the headset paired to the phone, call a friend/relative. Is the person you are calling able to hear you? Are you able to hear the person you are calling? If you’re experiencing the same issue with two different phones, you will want to contact our support team via the link below.

## Bluetooth audio quality

If you are Bluetooth paired to your Mac, after your chat or call is completed you may experience a drop in audio quality. You will need to set your headset back to stereo. **See “Chat / VoIP Setup” on page 20.**

## Headset not powering on

The battery may be depleted. Charge your headset for 8 hours. (You may use the headset while recharging.) **See “Charging the Headset” on page 21.**

If your issue is not resolved by these steps.  
**please visit [turtlebeach.com/support](https://turtlebeach.com/support)**

## Important Safety Information

To avoid potential damage to the device, always disconnect all cables before transporting it.

**WARNING:** Permanent hearing damage can occur if a headset is used at high volumes for extended periods of time, so it is important to keep the volume at a safe level. Over time, your ears adapt to loud volume levels, so a level that may not cause initial discomfort can still damage your hearing. If you experience ringing in your ears after listening with the headset, it means the volume is set too loud. The louder the volume is set, the less time it takes to affect your hearing. So, please take care to listen at moderate levels.

- Before placing a headset on your ears, turn the volume down completely, then slowly increase it to a comfortable level.
- Turn down the volume if you can't hear people speaking near you.
- Avoid turning up the volume to block out noisy surroundings.



## Regulatory Compliance Statements for the EAR FORCE i30 Model

Federal Communications Commission (FCC) Compliance Notices

This section includes the following FCC statements for the EAR FORCE i30 Model:

- FCC ID: XGB-TB7010
- Class B Interference Statement
- RF Radiation Exposure & Hazard Warning
- Non-Modification Statement
- Deployment Statement

### Class B Interference Statement

This equipment has been tested and found to comply with the limits for a Class B digital device, pursuant to Part 15 of the FCC Rules. These limits are designed to provide reasonable protection against harmful interference in a residential installation. This equipment generates, uses, and can radiate radio frequency energy and, if not installed and used in accordance with the instructions, may cause harmful interference to radio communications. However, there is no guarantee that interference will not occur in a particular installation. If this equipment does cause harmful interference to radio or television reception, which can be determined by turning the equipment off and on, the user is encouraged to try to correct the interference by one or more of the following measures:

- Reorient or relocate the receiving antenna.
- Increase the separation between the equipment and receiver.
- Connect the equipment into an outlet on a circuit different from that to which the receiver is connected.
- Consult the dealer or an experienced radio/TV technician for help.

### FCC Caution:

This device complies with Part 15 of the FCC Rules. Operation is subject to the following two conditions: (1) This device may not cause harmful interference, and (2) this device must accept any interference received, including interference that may cause undesired operation.

### RF Radiation Exposure & Hazard Statement

To ensure compliance with FCC RF exposure requirements, this device must be installed in a location such that the antenna of the device will be greater than 2 cm (0.8 in.) from all persons. Using higher gain antennas and types of antennas not covered under the FCC certification of this product is not allowed. Installers of the radio and end users of the product must adhere to the installation instructions provided in this manual. This transmitter must not be co-located or operated in conjunction with any other antenna or transmitter.

### Non-Modification Statement

Use only the supplied internal antenna. Unauthorized antennas, modifications, or attachments could damage the EAR FORCE i30 Model and violate FCC regulations. Any changes or modifications not expressly approved by the party responsible for compliance could void the user's authority to operate this equipment. Please contact Turtle Beach for a list of approved 2.4 GHz antennas.

### Canadian ICES Statements

IC: 3879A-7010

This device complies with ICES-003 and RSS-210 of Industry Canada.

Operation is subject to the following two conditions:

1. This device may not cause interference, and
2. This device must accept any interference, including interference that may cause undesired operation of the device.

### Ce dispositif est conforme aux normes NMB003 et CNR-210 d'Industrie Canada.

1. L'utilisation de ce dispositif est autorisée seulement aux conditions suivantes :
2. il ne doit pas produire de brouillage et l'utilisateur du dispositif doit être prêt à accepter tout brouillage radioélectrique reçu, même si ce brouillage est susceptible de compromettre le fonctionnement du dispositif.

To prevent radio interference to the licensed service (i.e. co-channel Mobile Satellite systems) this device is intended to be operated indoors and away from windows to provide maximum shielding. Equipment (or its transmit antenna) that is installed outdoors is subject to licensing and not supported by EAR FORCE i30 Model.

#### **RF Radiation Exposure & Hazard Statement**

To ensure compliance with RSS-102 RF exposure requirements, this device must be installed in a location such that the antenna of the device will be greater than 2 cm (0.8 in.) away from all persons. Using higher gain antennas and types of antennas not covered under the IC certification of this product is not allowed. Installers of the radio and end users of the product must adhere to the installation instructions provided in this manual. This transmitter must not be co-located or operated in conjunction with any other antenna or transmitter.

#### **Exposition aux radiations RF & Mention de danger**

Pour assurer la conformité avec les exigences RSS-102 d'exposition aux RF (Radio Fréquences), cet appareil doit être installé dans un endroit où l'antenne de l'appareil sera située à une distance de plus de 2 cm (0.8 po) de toutes personnes. L'utilisation d'antennes à gain plus élevé et les types d'antennes qui ne sont pas couverts en vertu de la certification IC de ce produit n'est pas autorisée. Les installateurs de la radio et les utilisateurs du produit final doivent se conformer aux instructions d'installation fournies dans ce manuel. Cet émetteur ne doit pas être co-implanté ou exploité en conjonction avec toute autre antenne ou transmetteur.


#### **European Union and European Fair Trade Association Regulatory Compliance**

This equipment may be operated in the countries that comprise the member countries of the European Union and the European Fair Trade Association. These countries, listed below, are referred to as The European Community throughout this document:

AUSTRIA, BELGIUM, BULGARIA, CYPRUS, CZECH REPUBLIC, DENMARK, ESTONIA, FINLAND, FRANCE,, GERMANY, GREECE, HUNGARY, IRELAND, ITALY, LATVIA, LITHUANIA, LUXEMBOURG, MALTA, NETHERLANDS, POLAND, PORTUGAL, ROMANIA, SLOVAKIA, SLOVENIA, SPAIN, SWEDEN, UNITED KINGDOM, ICELAND, LICHTENSTEIN, NORWAY, SWITZERLAND

The EAR FORCE i30 device has a BT radio transceiver for communicating with users over the internet connection provided in the host platform. The EAR FORCE i30 Model has one 2.4 GHz BT radio with one 2.4 GHz BT omni-directional internal antenna.

# Declaration of Conformity

Marking by this symbol: 

indicates compliance with the Essential Requirements of the R&TTE Directive of the European Union (1999/5/EC). This equipment meets the following conformance standards:

**Safety:** EN 60950-1: 2006 + A11: 2009 + A1: 2010 + A12: 2011 (T-Mark License)  
IEC 60950-1: 2005 (2nd Edition) + Am 1: 2009 (CB Scheme Report/Certificate),  
EN 50332-1: 2000, EN50332-2: 2003

**EMC:** EN 55022: 2010, EN 301 489-1 v1.9.2 (2011-09), EN 301 489-17 v2.2.1 (2012-09)  
EN 61000-4-2: 2008-05, EN 61000-4-3: 2010-04, EN 61000-4-4: 2011-03,  
EN 61000-4-6: 2005, EN 61000-4-8 (2008-10)

**Radio:** EN 300 328 v.1.7.1 (2006-10)

**SAR:** EN 62311: 2008

**Environmental:** Low Voltage Directive 2006/95/EC, RoHS 2011/65/EU, WEEE 2002/96/EC,  
REACH 2006/1907/EC, Packaging 94/62/EC, Battery 2006/66/EC

## Warning!

This is a Class B product. In a domestic environment, this product may cause radio interference, in which case, the user may be required to take appropriate measures.

## Achtung!

Dieses ist ein Gerät der Funkstörgrenzwertklasse B. In Wohnbereichen können bei Betrieb dieses Gerätes Rundfunkstörungen auftreten, in welchen Fällen der Benutzer für entsprechende Gegenmaßnahmen verantwortlich ist.

## Attention!

Ceci est un produit de Classe B. Dans un environnement domestique, ce produit risque de créer des interférences radioélectriques, il appartiendra alors à l'utilisateur de prendre les mesures spécifiques appropriées.

# Declaration of Conformity of the European Community

Bulgaria	български	С това, Turtle Beach обявява, че този модел на радио на EAR FORCE i30, е със съгласие с съществени изисквания и други важни условия на директива 1999/5 на европейски съюз
Czech Republic	Česky	Turtle Beach tímto prohlašuje, že tento EAR FORCE i30, je ve shodě se základními požadavky a dalšími příslušnými ustanoveními směrnice 1999/5/ES.
Denmark	Dansk	Undertegnede Turtle Beach erklærer herved, at følgende udstyr EAR FORCE i30, overholder de væsentlige krav og øvrige relevante krav i direktiv 1999/5/EF.
English	English	Hereby, Turtle Beach declares that this EAR FORCE i30, is in compliance with the essential requirements and other relevant provisions of Directive 1999/5/EC.
Estonia	Eesti	Käesolevaga kinnitab Turtle Beach seadme EAR FORCE i30, vastavust direktiivi 1999/5/EÜ põhinõuetele ja nimetatud direktiivist tulenevatele teistele asjakohastele sätetele.
Finland	Suomi	Turtle Beach vakuuttaa täten että EAR FORCE i30, tyyppinen laite on direktiivin 1999/5/EY oleellisten vaatimusten ja sitä koskevien direktiivin muiden ehtojen mukainen.
France	Français	Par la présente Turtle Beach déclare que l'appareil EAR FORCE i30, est conforme aux exigences essentielles et aux autres dispositions pertinentes de la directive 1999/5/CE.
German	Deutsch	Hiermit erklärt Turtle Beach., dass sich das Gerät EAR FORCE i30, in Übereinstimmung mit den grundlegenden Anforderungen und den übrigen einschlägigen Bestimmungen der Richtlinie 1999/5/EG befindet.
Greece	Ελληνική	ΜΕ ΤΗΝ ΠΑΡΟΥΣΑ Turtle Beach.ΗΛ.ΝΕΙ ΟΤΙ EAR FORCE i30, ΣΥΜΜΟΡΦ.ΝΕΤΑΙ ΠΡΟΣ ΤΙΣ ΟΥΣΙ..ΕΙΣ ΑΠΑΙΤΗΣΕΙΣ ΚΑΙ ΤΙΣ ΛΟΙΠΕΣ ΣΧΕΤΙΚΕΣ .ΙΑΤΑΞΕΙΣ ΤΗΣ Ο.ΗΓΙΑΣ 1999/5/ΕΚ.
Hungary	Magyar	Alulírott, Turtle Beach nyilatkozom, hogy a EAR FORCE i30, megfelel a vonatkozó alapvető követelményeknek és az 1999/5/EC irányelv egyéb előírásainak.
Italy	Italiano	Con la presente Turtle Beach dichiara che questo EAR FORCE i30, è conforme ai requisiti essenziali ed alle altre disposizioni pertinenti stabilite dalla direttiva 1999/5/CE.
Latvia	Latviski	Ar šo Turtle Beach deklarē, ka EAR FORCE i30, atbilst Direktīvas 1999/5/EK būtiskajām prasībām un citiem ar to saistītajiem noteikumiem.
Lithuania	Lietuvių	Šiuo Turtle Beach deklaruoją, kad šis EAR FORCE i30, atitinka esminius reikalavimus ir kitas 1999/5/EB Direktyvos nuostatas.
Malta	Malti	Hawnhekk, Turtle Beach., jiddikjara li dan EAR FORCE i30, jikkonforma mal-tiijiet essenzjali u ma provvedimenti orajn relevanti li hemm fid-Dirrettiva 1999/5/EC.
Netherlands	Netherlands	Hierbij verklaart Turtle Beach dat het toestel EAR FORCE i30, in overeenstemming is met de essentiële eisen en de andere relevante bepalingen van richtlijn 1999/5/EG.
Poland	Polski	Niniejszym Turtle Beach oświadczam, że EAR FORCE i30, jest zgodny z zasadniczymi wymogami oraz pozostałymi stosownymi postanowieniami Dyrektywy 1999/5/EC.
Portugal	Português	Turtle Beach declara que este EAR FORCE i30, está conforme com os requisitos essenciais e outras disposições da Directiva 1999/5/CE.
Romania	Român	Astfel, Turtle Beach declară acel acest EAR FORCE i30, este în conformitate cu cerințele necesare și proviziile alte semnificative de Directive 1999 5 EC.
Slovakia	Slovensky	Turtle Beach týmto vyhlasuje, že EAR FORCE i30 spĺňa základné požiadavky a všetky príslušné ustanovenia Smernice 1999/5/ES.
Slovenia	Slovensko	Turtle Beach izjavlja, da je ta EAR FORCE i30, v skladu z bistvenimi zahtevami in ostalimi relevantnimi določili directive 1999/5/ES.
Spain	Español	Por medio de la presente Turtle Beach declara que el EAR FORCE i30, cumple con los requisitos esenciales y cualesquiera otras disposiciones aplicables o exigibles de la Directiva 1999/5/CE.
Sweden	Svenska	Härmed intygar Turtle Beach att denna EAR FORCE i30, står i överensstämmelse med de väsentliga egenskapskrav och övriga relevanta bestämmelser som framgår av direktiv 1999/5/EG.



# LIMITED ONE YEAR WARRANTY FOR TURTLE BEACH PRODUCTS:

Voyetra Turtle Beach, Inc. ("VTB") warrants to the original end-user purchaser ("Purchaser") that the retail Turtle Beach hardware product herein ("Product") will be free of defects in materials and workmanship for a period of one year from the date of purchase by the Purchaser ("Warranty Period"). Any Extended Warranty or Service Plans purchased through a Retail store are not honored by VTB. The Warranty refers to the repair/replacement of a defective product during this period and not a refund.

This limited warranty is extended only to the original Purchaser of a new product, which was not sold "AS IS". It is not transferable or assignable to any subsequent purchaser. This limited warranty is applicable only in the country or territory where the Product was purchased from an authorized VTB retailer and does not apply to a Product that has been purchased as used or refurbished or was included as part of a non-VTB product.

## WARRANTY SERVICE:

In the USA and CANADA Warranty Service is provided by our Turtle Beach USA offices and in all other Countries it is provided by our local International Distributors when available. Refurbished/Recertified products are sold on an AS IS basis with a 90-day Warranty or less in accordance with each vendor's policy.

VTB does not warrant uninterrupted or error-free operation of the Product and is under no obligation to support the Product for all computer operating systems or future versions of such operating systems.

If a defect should occur during the Warranty Period, Purchaser must contact VTB to obtain a Return Merchandise Authorization ("RMA") number on the basis of the dated purchase receipt. Purchaser will be responsible for shipping costs incurred in returning the defective Product to an authorized VTB service center, or to the repair facility located at VTB's corporate headquarters. VTB will not be responsible for other products or accessories included with the defective Product sent to VTB. The RMA number must be clearly indicated on the outside of the package. Packages without an RMA number will be refused by VTB or its representatives and returned to sender at the sender's expense.

In the event of a defect, Purchaser's sole and exclusive remedy, and VTB's sole liability, is expressly limited to the correction of the defect by adjustment, repair, or replacement of the Product at VTB's sole option and expense. VTB owns all Products it has replaced and all parts removed from repaired Products. VTB uses new and reconditioned parts made by various manufacturers in performing warranty repairs and building replacement products. If VTB repairs or replaces a product, the original Warranty Period is not extended, however, VTB warrants that repaired or replacement parts will be free from defects in material and workmanship for a period of thirty (30) days from the date of repair or replacement, or for the remainder of the Warranty Period, whichever is greater.

This warranty does not apply to any Product that has had its serial number altered, removed or defaced, or any Product damage caused by shipping, improper storage, accident, problems with electrical power, abuse, misuse, neglect, ordinary wear, acts of God (e.g. flood), failure to follow directions, improper maintenance, use not in accordance with product instructions, unauthorized modification or service of the Product or damage resulting from the use of the Product with hardware, software or other products not provided by or specifically recommended by VTB.

## NOTES:

- Replacement Parts and accessories that are subject to "wear and tear" such as earpads, mic foam covers, talkback cables, etc. have a three (3) month Warranty.
- Replacement Parts for Discontinued Products are sold on an AS IS basis, they are not supported and come with a 30 day Warranty.

THIS LIMITED WARRANTY IS PURCHASER'S SOLE AND EXCLUSIVE REMEDY AND IS IN LIEU OF ALL OTHER WARRANTIES, EXPRESS OR IMPLIED. TO THE EXTENT PERMITTED BY APPLICABLE LAW, VTB HEREBY DISCLAIMS THE APPLICABILITY OF ANY IMPLIED WARRANTY OF MERCHANTABILITY, FITNESS FOR A PARTICULAR PURPOSE OR USE FOR THE PRODUCT. IF SUCH A DISCLAIMER IS PROHIBITED BY APPLICABLE LAW, THE IMPLIED WARRANTY IS LIMITED TO THE DURATION OF THE FOREGOING LIMITED WRITTEN WARRANTY.

IN NO EVENT SHALL VTB BE LIABLE FOR ANY INDIRECT, INCIDENTAL, SPECIAL, PUNITIVE OR CONSEQUENTIAL DAMAGES, OR DAMAGES, INCLUDING BUT NOT LIMITED TO ANY LOST PROFITS, DATA, OR LOSS OF USE, ANY THIRD PARTY CLAIMS, AND ANY INJURY TO PROPERTY OR BODILY INJURY (INCLUDING DEATH) TO ANY PERSON, ARISING FROM OR RELATING TO THE USE OF THIS PRODUCT OR ARISING FROM BREACH OF THE WARRANTY, BREACH OF CONTRACT, NEGLIGENCE, TORT, OR STRICT LIABILITY, EVEN IF VTB HAS BEEN ADVISED OF THE POSSIBILITY OF SUCH DAMAGES.

This warranty supersedes all prior agreements or understandings, oral or written, relating to the Product, and no representation, promise or condition not contained herein will modify these terms. Some states do not allow the exclusion or limitation of incidental or consequential damages, so the above exclusion or limitation may not apply to you. This warranty gives you specific legal rights. You may also have other rights, which vary from state to state. Any action or lawsuit for breach of warranty must be commenced within eighteen (18) months following the purchase of the Product.

# EXCLUSIONS FROM LIMITED WARRANTY:

This Limited Warranty shall not apply and VTB has no liability under this Limited Warranty if the Turtle Beach Product:

- is used for commercial purposes such as "LAN, Call Centers" (including rental or lease);
- is modified or tampered with;
- is damaged by Acts of God, power surge, misuse, abuse, negligence, accident, wear and tear, mishandling, misapplication, or other causes unrelated to defective materials or workmanship;
- serial number is defaced, altered or removed;
- is not used in accordance with the documentation and use instructions; or
- is repaired, modified or altered by other than authorized repair centers.
- is no longer available because it was discarded.



Made for



iPod



iPhone



iPad



Watch Turtle Beach product training videos at:

**[youtube.com/TurtleBeachVideos](http://youtube.com/TurtleBeachVideos)**



Product support and warranty information:

**[TurtleBeach.com/support](http://TurtleBeach.com/support)**

Copyright © 2013 Voyetra Turtle Beach, Inc. (VTB, Inc.) All rights reserved. Turtle Beach, the Turtle Beach Logo, Voyetra, and Ear Force are either trademarks or registered trademarks of VTB, Inc. "Made for iPod," "Made for iPhone," and "Made for iPad" mean that an electronic accessory has been designed to connect specifically to iPod, iPhone, or iPad, respectively, and has been certified by the developer to meet Apple performance standards. Apple is not responsible for the operation of this device or its compliance with safety and regulatory standards. Please note that the use of this accessory with iPod, iPhone, or iPad may affect wireless performance. Mac, iPad, iPhone, iPod touch, and iPod are trademarks of Apple Inc., registered in the U.S. and other countries. Actual product appearance may differ from package imagery. All Rights Reserved.

This product is compliant with the Consumer Product Safety Improvement Act of 2008, Public Law 110-314 (CPSIA)