

abitana

Home Networks



CATALOGUE

ENGLISH 06-2011

Contents

product family	page
TV-Radio distribution	1
TV VHF-UHF modulation	5
PC-LAN networking	6
Telephony	8
Audio-Video distribution	10
/HQ Balanced Composite Video	
/Composite Video	
/Component Video	
/HDMI	
IR Remote Control	14
Power supply	16
DIN-rail connectors	18
Wall Outlets	22
/2000 series	
/2100 series	
/2200 series	
/2300 series	
/2500 series	
Connectors	27
Adapters	31
/RJ45-RJ45 Link splitters	
/RJ45-DB9 or DB25	
Cable	32
/OmniMedia	
/Coax	
DIN-rail enclosures	34
/Xplore - classic range	
/Xpress - flexible range	
/Xpert - professional range	
/Accessories	
19 inch panels	36
Patchcords	37
/OmniMedia RJ45-RJ45	
/UTP RJ45-RJ45	
/Coax F-F	
Connection cords	38
/OmniMedia RJ45-RJ45	
/UTP RJ45-RJ45	
/UTP RJ11-RJ45	
/Coax RF	
Tooling	40
SMART MUSIC	41
/SMART MUSIC Components	
/Loudspeaker Cabling	
/Loudspeakers	

ABI-EV1012S00
Twisted Pair wideband 4 ports TV/Radio amplifier - 2 inputs


Wideband video amplifier with 1 coaxial F input for aerial or cable signals and 1 input for signals from an RF modulator (eg ABI-EV1017S00), and 4 balanced RJ45 outputs. Ensures distribution of TV, FM radio signals and home A/V channels over OmniMedia universal cabling; balances the output signals to be compatible with the OmniMedia pair cabling system; amplifies the signal with pre-compensation of the OmniMedia cable characteristic; matches the impedance of the cable types (75-100 Ohm). The gain of the antenna/cable input is adjustable to ensure optimum picture quality (use the wideband power test tool ABI-TT1003S12). The device is equipped with IR-Bus, a return channel for the infrared remote control signals of DVD player, SAT decoder, camera,... This unit requires 5VDC from a power supply ABI-PS1001S11.

Characteristics:

- Frequency range: 5 - 862 MHz
- 1 F coax input (IEC61169-24) for aerial/cable
- 1 F coax input (IEC61169-24) for RF modulator
- 4 RJ45 shielded output jacks (IEC60603-7)
- IR-Bus interface on output ports (electrical)
- IR-Bus interface on side flanges (optical)
- upgradable for direct interactive return path

WxHxD (mm): 71,2x80x65

0,29 kg

Individually packaged

ABI-RP1001S00
Return Path Diplexer kit for amplifiers ABI-EV1002S00 and ABI-EV1012S00


This kit might be required for digital TV cable operators using an in-band interactive return path (i.e. VOO (Belgium), UPC (The Netherlands),...

This kit is in principle not required for operators using an Ethernet return path (i.e. Telenet in Belgium) or when the set-top box is installed near or inside the wiring cabinet.

A kit has two diplexers and coupling patchcords. One diplexer reaches across the ABI-EV1002S00 and ABI-EV1012S00 broadband amplifiers. The other diplexer connects the set-top box to the RJ45 OmniMedia wall outlet.

Cord length:

- Decoder side 15cm
- Amplifier side: 75cm

0,3 kg

ABI-TT1003S12
RF pocket size tester for amplifiers ABI-EV1002S00 and ABI-EV1012S00


RF pocket size tester to finetune the optimum working point of the ABI-EV1002S00 and ABI-EV1012S00 twisted pair broadband amplifiers.

The device consists of a RF power meter with a led indicator.

The green or red status of the led indicator will allow the installer to put the amplifier in its optimum working point, thereby guaranteeing that sufficient power is available to feed the OmniMedia links and also ensuring that minimal intermodulation distortion occurs in the amplifier for a perfect picture quality.

Characteristics:

- Ensures properly adjusted TV links
- Simple red/green indication of optimum setpoint
- No extra tools or adapters required

WxHxD (mm): 16,7x33,2x52,2

0,05 kg

Individually packaged

ABI-EV2012S00
Twisted Pair 4-port & Coax 3 port TV/Radio amplifier - NextGen (4Q2011)


This wideband coax and twisted pair amplifier is the entry-point for the home of either aerial-based television channels (FM, DVB-T, Satellite dish), or a combination of broadband coaxial network CaTV signals and Satellite dish, or a combination of one of the previous options with 10/100bT-based internet browsing and TV.

Input ports:

The amplifier's main input accepts broadband FM and TV signals in the range between 88 and 862MHz and TV signals from a Satellite dish in the range between 950MHz and 2150MHz. The input also carries return path signals in the reverse direction in a band between 5MHz and 85MHz for use on Docsys compliant CableTV networks.

Output ports:

The combination FM/VHF/UHF is offered on four twisted pair RJ45 connectors that can be connected via OmniMedia cable to RJ45 wall outlets. These ports carry back direct or indirect return path signals.

The combination FM/VHF/UHF/SAT-IF is offered on a standard level output coax connector that can be connected to a link with a standard triple FM/TV/Sat wall outlet, for instance located in the main viewing room.

To extend the unit, two piggyback coaxial output ports supply high-level broadband signals to feed slave twisted pair output modules, thus increasing the scope of the base amplifier module.

This unit requires 5VDC from a power supply ABI-PS1001S11.

Characteristics:

- 1 F coax input (IEC61169-24) for aerial/cable/sat
- 1 F coax output for triple outlet TV/FM/Sat
- 2 F coax outputs for slave twisted pair modules
- 4 RJ45 shielded TV ports (IEC60603-7)
- 4 RJ45 auxiliary Ethernet+IR ports
- Direct interactive return path (Docsys)
- Indirect interactive return path (10/100bT)
- Max. Link length: 35m OmniMedia cable

WxHxD (mm): 157x80x65

0,5 kg

Individually packaged

ABI-EV1001S00
Wideband 4 ports coax TV/Radio preamplifier


Wideband video amplifier with 1 coax F input and 4 coax F outputs. Optimised to distribute TV and FM radio signals on 75 Ohm coaxial cable (eg ABI-KX1002S00) throughout the home to a max. of 4 TVs or video recorders. The coax amplifier can also be used as antenna amplifier or to compensate coupling losses when several ABI-EV1002S00 or ABI-EV1012S00 amplifiers are being installed. Package includes 3 coaxial 75 Ohm termination resistors ABI-AX1003S00.

This unit requires 5VDC from a power supply ABI-PS1001S00 or ABI-PS1002S00.

Characteristics:

- Frequency range: 5- 862 MHz
- 1 F coax input (IEC61169-24)
- 4 F coax outputs (IEC61169-24)
- 5V power supply (from ABI-PS1001S00)
- DIN-rail mount - 4 std positions wide
- not fitted with a direct interactive return path circuit

WxHxD (mm): 71,2x80x65

0,28 kg

Individually packaged

ABI-AC1001S00
Balun for FM-VHF-UHF, variable gain


Adapter to connect a TV set or a digital settopbox to a universal OmniMedia wall outlet using a standard RF coax lead. Ensures proper impedance matching (100-75 Ohm). The gain is adjustable to guarantee optimum picture quality. In combination with coax gender changer ABI-CX1005S00 this adapter can be used to connect an FM or DAB radio or tuner. Adapter ABI-AC1030S00 allows the simultaneous connection of a TV and a Radio from a single RJ45 socket.

Characteristics:

- RJ45 plug (100 Ohm) to IEC61169.2 male (75 Ohm)
- Frequency range: 5 - 862 Mhz

Complies with:

- IEC61169.2 (DIN 45325) male
- EN 50083-2
- EN 50083-7

WxHxD (mm): 16,7x33,2x52,2

0,013 kg

Individually packaged

ABI-AC1002S00
Balun for FM-VHF-UHF, fixed gain


Adapter to connect a TV set or a digital settopbox to a universal OmniMedia wall outlet using a standard RF coax lead. Ensures proper impedance matching (100-75 Ohm). In combination with coax gender changer ABI-CX1005S00 this adapter can be used to connect an FM or DAB radio or tuner. Adapter ABI-AC1030S00 allows the simultaneous connection of a TV and a Radio from a single RJ45 socket.

Characteristics:

- RJ45 plug (100 Ohm) to IEC61169.2 male (75 Ohm)
- Frequency range: 5 - 862 Mhz

Complies with:

- IEC61169.2 (DIN 45325) male
- EN 50083-2
- EN 50083-7

WxHxD (mm): 16,7x33,2x52,2

0,013 kg

Individually packaged

ABI-AC1004S00
Balun for FM, fixed gain


Adapter to connect a FM radio or tuner to a universal OmniMedia wall outlet using a standard RF coax lead. Ensures proper impedance matching (100-75 Ohm). Not suitable to connect a TV set or video recorder.

Characteristics:

- RJ45 plug (100 Ohm) to IEC61169.2 female (75 Ohm)
- Frequency range: 88 - 108 Mhz

Complies with:

- IEC61169.2 (DIN 45325) female
- EN 50083-2
- EN 50083-7

WxHxD (mm): 16,7x33,2x52,2

0,013 kg

Individually packaged

ABI-AC1007S00
Balun for FM-VHF-UHF with gain adjustment and IR-Bus


Adapter to connect a TV set or a digital settopbox to a universal OmniMedia wall outlet using a standard RF coax lead. Ensures proper impedance matching (100-75 Ohm). The gain is adjustable to guarantee optimum picture quality. Equipped with the IR-bus on a 2,5mm plug to interface with a IR receiver cord that sends back IR remote control signals to the Comm Center. In combination with coax gender changer ABI-CX1005S00 this adapter can be used to connect an FM or DAB radio or tuner. Adapter ABI-AC1030S00 allows the simultaneous connection of a TV and a Radio from a single RJ45 socket.

Characteristics:
 - RJ45 plug (100 Ohm) to IEC61169.2 male (75 Ohm)
 - Frequency range: 5 - 862 Mhz

Complies with:
 - IEC61169.2 (DIN 45325) male
 - EN 50083-2
 - EN 50083-7

WxHxD (mm): 16,7x33,2x52,2

0,02 kg

Individually packaged

ABI-AC1030S00
Radio/TV coaxial diplex filter


Use a single wall outlet and TV adapter to provide FM radio and VHF/UHF TV signals. The signals are split with a minimal loss by the use of this diplex filter.

Characteristics:
 FM band: 87,5 - 108 MHz
 FM insertion loss: < 1 dB
 VHF/UHF band: 120 - 862 MHz
 VHF/UHF insertion loss: < 1dB

Complies with:
 - IEC 60728-2
 - IEC 169-24

WxHxD (mm): 60x28x28

0,052 kg

Individually packaged

ABI-AX1001S02
Coax 2-way splitter (-4dB) with F connectors


Coaxial wideband 2-way splitter (or combiner). 1 F connector in, 2 F connectors out. 75 Ohm impedance. Used to split antenna, CaTV or modulator signals to separate amplifiers.

Characteristics:
 - RF-IN: F female connector
 - RF-OUT: 2x F female connector
 - Frequency range: 5 - 862 MHz

Complies with:
 - IEC61169-24 F type

WxHxD (mm): 58x50x15

0,034 kg

Individually packaged

ABI-EV1017S00
4-channel Audio/Video modulator with IR-Bus


Up to 4 Audio/Video sources (DVD player, satellite decoder, video recorder, surveillance camera,...) can be watched on any TV set attached to the home network by using the RF modulator in combination with wideband amplifier ABI-EV1012S00 and AV adapters ABI-AS1016S00 (scart) or ABI-AC1003S00 (CVBS), effectively creating up to 4 new home channels. Each A/V source signal is being modulated on a specific RF carrier frequency. A built-in pilot tone and B&W pattern generator simplify the tuning procedure. The device is equipped with IR-Bus, a return channel for the infrared remote control signals of DVD player, SAT decoder, video recorder,...

This unit requires 5VDC from a power supply ABI-PS1001S00 or ABI-PS1002S00.

Characteristics:

- Frequency range: 62 - 862 MHz (programmable)
- 1 F coax output (IEC61169-24) with 4 RF channels
- 16 pre-programmed frequency grids
- Frequencies reprogrammable via serial port (kit ABI-EV1017SPK)
- 4 RJ45 shielded A/V input jacks (IEC60603-7)
- IR-Bus interface on input port

WxHxD (mm): 71,2x80x65

0,28 kg

Individually packaged

ABI-EV1017SPK
Programming kit for the ABI-EV1017S00 VHF/UHF modulator


This kit is used in combination with a laptop computer to reprogram the channel frequencies and/or modulation formats (PAL I, B/G, Secam) of RF modulator ABI-EV1017S00. The kit comprises a serial interface cable, a CD-Rom and a User Manual. If the computer has no serial port, a serial port to USB adapter is also required.

Characteristics:
Kit includes:

- a CD-ROM with instructions
- a serial interface cord (DB9)

Protective postal bag 17x22cm

0,15 kg

Individually packaged

ABI-FF100xS0y
RF filters with F connectors


These tubular radiofrequency F-F filters provide very sharp cut-off at the specified frequencies. They are intended to be used in amplifier/modulator combinations, either to reject unwanted signals from aerial or cable, either to eliminate harmonic frequencies of the modulators.

- ABI-FF1001S01: Low Pass Filter (446MHz)
- ABI-FF1001S02: Low Pass Filter (672MHz)
- ABI-FF1001S03: Low Pass Filter (750MHz)
- ABI-FF1002S01: High Pass Filter (470MHz)
- ABI-FF1003S01: Band Stop Filter (310-446MHz)

Characteristics:

Please consult our application notes.

Complies with:

- IEC 169-24
- IEC 60728-2

L: 58mm; Dia:20mm

0,058 kg

Individually packaged

ABI-EL1001S00
Fast Ethernet Switch - 5 ports 10/100bT - DIN-rail


The 5 port 10/100Mbps Switch automatically recognises all attached network equipment and chooses the highest possible bit rate (10 or 100Mbps) and transmission mode for each equipment. The auto MDI/MDIX function eliminates the need (and risk of errors) for crossover patch cords. This unit requires 5VDC from a power supply ABI-PS1001S00 or ABI-PS1002S00.

Characteristics:

- 5 ports 10/100Mbps
- MDI/MDIX
- Auto sense/auto negotiate
- 5V power supply (from ABI-PS1001S00)
- DIN-rail mount - 4 std positions wide

Complies with:

- IEEE 802.3 10Base-T Ethernet
- IEEE 802u 100Base-TX Fast Ethernet
- EN50022 Class B; Emission
- Directives: 89/336/EEC; 92/31/EEC

WxHxD (mm): 71,2x80x65

0,28 kg

Individually packaged

ABI-EL2002S00
Gigabit Ethernet Switch - 8 ports 10/100/1000bT - DIN-rail


8 full GbE ports with nonblocking wire-speed performance. The ports automatically recognise all attached network equipment and choose the highest possible bit rate (10, 100 or 1000Mbps) and transmission mode for each equipment. The auto MDI/MDIX function eliminates the need (and risk of errors) for crossover patch cords.

Three of the eight ports may be forced in Fast Ethernet mode and carry a secondary phone or data signal over the same RJ45 link. The secondary signal is connected to the RJ11 injection ports on the top of the unit by using special patchcords ABI-PC2002S01 (data-data) or ABI-PC2002S04 (data-phone). This practical solution reduces the number of required wire links in environments like a home office where there is a shortage of connection sockets.

This unit requires 5VDC from a power supply ABI-PS1001S00 or ABI-PS1002S00.

Characteristics:

- 8 ports 10/100/1000Mbps
- MDI/MDIX
- Auto sense/auto negotiate
- 5V power supply (from ABI-PS1001S00)
- DIN-rail mount - 9 std positions wide

Complies with:

- IEEE 802.3 ab 10/100/1000Mbps
- supports IEEE Std802.1D, 802.1w, 802.1s, 802.1X
- 8K MAC addresses
- Jumbo Frame Support
- Full duplex flow control
- EN50022 Class B; Emission
- Directives: 89/336/EEC; 92/31/EEC

WxHxD (mm): 157x80x65

0,5 kg

Individually packaged

ABI-PC2002S01**Hybrid injection cord Data-Data (for switch ABI-EL2002S00)**

ONLY USE with the multifunntion Gigabit ABI-EL2002S00 switch!

This hybrid injection cord is used to inject into one of the EL2002S00's three hybrid links a supplementary Data signal (Ethernet or Fast Ethernet).

The RJ45 side of the cord is meant to attach to the Ethernet stream that is being injected, the RJ11 side of the cord goes into one of the EL2002's injection port on top of the unit.

At the other end of the EL2002S00's combined link, an adapter AP1002S01 is used to separate the two datastreams (one Fast Ethernet from the EL2002S00's bus, one Ethernet or Fast Ethernet from the injection port).

ONLY USE with the multifunntion Gigabit EL2002S00 switch!

L (cm): 45

0,026 kg

Individually packaged

ABI-PC2002S04**Hybrid injection cord Data-Telephone (for switch ABI-EL2002S00)**

ONLY USE with the multifunntion Gigabit ABI-EL2002S00 switch!

This hybrid injection cord is used to inject into one of the EL2002S00's three hybrid links a supplementary Telephony (or ADSL) type signal.

One RJ11 side of the cord is meant to attach to the telephony signal that is being injected, the other RJ11 side of the cord goes into the EL2002's injection port on top of the unit.

At the other end of the EL2002S00's combined link, an adapter AP1002S04 is used to separate the two signal streams (one Fast Ethernet from the EL2002S00's bus, the other Telephony from the injection port).

ONLY USE with the multifunntion Gigabit EL2002S00 switch!

L (cm): 45

0,026 kg

Individually packaged

ABI-ET2001S00
Telephony module without call confidentiality function


Passive module for the distribution of telephony signals without call confidentiality function, suited for standard analog (PSTN) or digital (ISDN) phone lines. Output ports assigned to the same phone line will ring simultaneously and phones connected to these ports can listen in to the same conversation. Allows easy patching of phones, fax, modem, banking terminal,...

Characteristics:

- 1 or 2 analog PSTN inputs (2x RJ11)
- 1 digital ISDN input (RJ45)
- 4 RJ45 output ports
- Passive distribution of inputs to output ports
- Fax priority setup possible
- DIN-rail mount - 4 std positions wide

WxHxD (mm): 71,2x80x65

0,28 kg

Individually packaged

ABI-ET2003S00
Modem-phone-fax splitter module with ADSL filter


The ABI-ET2003S00 is a passive splitter module for the distribution of analogue (PSTN) phone and ADSL signals. An external ADSL filter is no longer needed thanks to the built-in filter. This simplifies the installation and commissioning of phone, fax and ADSL modem-router. The ABI-ET2003S00 does not provide the call-confidentiality function.

Characteristics:

- Line in: PSTN (and ADSL) signal on RJ45 or RJ11 (2x)
- Line out:
 - 3x filtered PSTN on RJ45 ports P1, P2, P3
 - 1x unfiltered PSTN+ADSL on RJ45 port P4
 - dual mode phone service (phone only on P1, P2 and P3 or phone on P2 and P3 after a priority fax on P1)

WxHxD (mm): 71,2x80x65

0,28 kg

Individually packaged

ABI-ET2004S00
Telephony module - 4 line splitter/combiner


This module allows the transmission of 4 individual analog or digital 2-wire phone signals over a 4-pair twisted pair cable. The 4 pairs present on an RJ45 connector (top) are split and each one sent to an RJ45 on the module's front. The module can be used in both directions, to either split or combine signals onto a single cable. The same function is performed by ABI-PC2004S00 and by ABI-AP1004S09. The pinout is compatible between these three devices and all three can be used indiscriminately at both ends of a link.

Complies with:

- ISO/IEC 60603-7, connector
- ISO/IEC 11801, structured cabling
- EN 50173, structured cabling
- ISO/IEC 15018, residential cabling

WxHxD (mm): 71,2x80x65

0,28 kg

Individually packaged

ABI-AP1004S09**Shielded link splitter RJ45 jack to 4 x RJ45 jack (phone)**

Splitter from one RJ45 jack to 4 RJ45 jacks. Each pair of the RJ45 jack is copied to pair 1 (pins 4&5) of the 4 RJ45 jacks. Can be used to connect four phones over a single cable link. Do not use for Ethernet, video or TV applications.

Characteristics:

- RJ45 jack to 4 x RJ45 jack (4 x phone)

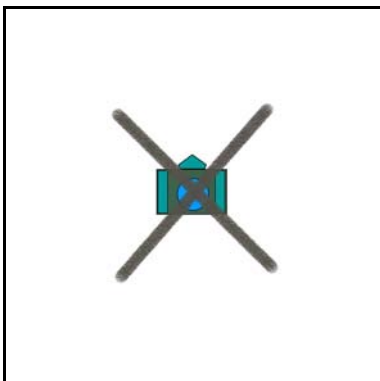
Complies with:

- ISO/IEC 60603-7

WxHxD (mm): 86,4x25,7x46,1

0,058 kg

Individually packaged

ABI-PC2004S00**Telephony octopus cord - 4 line splitter/combiner (4Q2011)**

This octopus breakout cord allows the transmission of 4 individual analog or digital 2-wire phone signals over a 4-pair twisted pair cable. The 4 pairs present on the common RJ45 plug are split and each one sent to an individual RJ45 plug marked 1 to 4. The cord can be used in both directions, to either split or combine signals onto a single cable. The same function is performed by ABI-ET2004S00 and by ABI-AP1004S09. The pinout is compatible between these three devices and all three can be used indiscriminately at both ends of a link.

Complies with:

- ISO/IEC 60603-7, connector
- ISO/IEC 11801, structured cabling
- EN 50173, structured cabling
- ISO/IEC 15018, residential cabling

L(m): 0,75

0,1 kg

Individually packaged

ABI-AV1002STR**SCART-RJ45 CVBS Extender kit with integrated IR-Bus devices & PC1008/DC1005 for central power supply**

This Composite Video & Stereo Transmitter and Receiver kit will enable transmission of high quality analogue audio&video signals over a single Cat5/6/7 or OmniMedia cable. The balanced video transmission mode maintains very high picture quality over long lengths of cable and avoids ground loop interference problems. Bidirectional IR passthrough is implemented over the same cable link. Transmitter and Receiver have connectors for IR eye and IR flasher. The kit comes complete with following devices: one Scart>RJ45 Transmitter, one RJ45>Scart Receiver, one IR eye, one IR flasher, one 5VDC power injector RJ45-RJ45 patch cord, one 5VDC DIN-rail mounted power supply coupler.

Warning! These HQ balanced extenders are NOT compatible with ABI-AS1002S00, ABI-AS1016STR, ABI-EV1017S00 or ABI-EV1018S00.

0,27 kg

1 kit

ABI-AV1001STR**SCART-RJ45 CVBS HQ Extender kit - integrated IR passthrough & 5V local power supply**

This Composite Video & Stereo Transmitter and Receiver kit will enable transmission of high quality analogue audio&video signals over a single Cat5/6/7 or OmniMedia cable. The balanced video transmission mode maintains very high picture quality over long lengths of cable and avoids ground loop interference problems. Bidirectional IR passthrough is implemented over the same cable link. Transmitter and Receiver have connectors for IR eye and IR flasher. The kit comes complete with following devices: one Scart>RJ45 Transmitter, one RJ45>Scart Receiver, one IR eye, one IR flasher, one 5VDC power supply.

Warning! These HQ balanced extenders are NOT compatible with ABI-AS1002S00, ABI-AS1016STR, ABI-EV1017S00 or ABI-EV1018S00.

0,42 kg

1 kit

ABI-EV1018S00
Audio/Video 1 to 4 distribution amplifier (CVBS+Stereo) with IR-Bus passthrough


The Video and Stereo Audio signals from a single AV source (DVD player, SAT decoder, video recorder, surveillance camera,...) can be watched simultaneously on 4 TV sets or monitors attached to the home network by using the AV distribution amplifier. The AV source is connected to the network by a SCART-to-RJ45 adapter (ABI-AS1016STR) or a RCA-to-RJ45 balun (ABI-AC1003S00). The AV distribution amplifier has a single input port, and 4 output ports. Each unit is shipped with a ABI-DC1006S00 to bring the 5th port (input port) to the front panel of the Comm Center cabinet. Each TV set or monitor is connected to the network in turn through a RJ45 to SCART adapter (ABI-AS1016STR) or a RJ45 to RCA balun (ABI-AC1003S00). The AV distribution amplifier is equipped with IR-Bus, a return channel for the infrared remote control signals of DVD player, SAT decoder, video recorder,...

This unit requires 5VDC from a power supply ABI-PS1001S11.

Warning: NOT compatible with ABI-AV1001STR or ABI-AV1002STR

Characteristics:

- 1x RJ45 input port for CVBS+Stereo+IR-Bus
- 4x RJ45 output ports for CVBS+Stereo+IR-Bus
- Composite Video Baseband
- Line-level Stereo
- Up to 35m reach
- IR-Bus interface on input and output ports

WxHxD (mm): 71,2x80x65

0,32 kg

Individually packaged

ABI-AS1016STR
SCART/RJ45 input-output adapter for ABI-EV1017S00 & ABI-EV1018S00


Bi-directional adapter to connect either an audio/composite video source (DVD player, satellite decoder, video recorder,...) or display (TV set, monitor, beamer,...) equipped with a SCART connector to a universal OmniMedia wall outlet through standard RJ45-RJ45 patch leads. Bi-directional IR-Bus interface for remote control transmitter or receiver wands. A unit can be used to bring AV signals to the ABI-EV1017S00 modulator or the ABI-EV1018S00 active AV splitter.

Warning: NOT compatible with ABI-AV1001STR or ABI-AV1002STR

0,1 kg

Individually packaged

ABI-AC1003S00
Adapter for Composite Video signal


Video adapter to connect an analog camera or camcorder to a universal OmniMedia wall outlet by means of a standard video coax patch cable. Ensures impedance matching (100-75 Ohm). A pair can be used to set up a short RCA-RCA video extension, a single unit can be used to bring a video signal to the ABI-EV1017S00 modulator or the ABI-EV1018S00 active AV splitter.

Warning: NOT compatible with ABI-AV1001STR or ABI-AV1002STR

Characteristics:

- RJ45 male (100 Ohm) to RCA/Cinch (75 Ohm) female

WxHxD (mm): 16,7x33,2x52,2

0,013 kg

Individually packaged

ABI-AS1003S00
Component Video + S/PDIF Audio 4xRCA to RJ45 adapter (YPbPr+S/PDIF)


Bi-directional adapter to connect either a high-resolution video source (DVD player, satellite decoder, video recorder,...) or display (TV set, monitor, beamer,...) to a universal OmniMedia wall outlet through a shielded OmniMedia RJ45-RJ45 connection cord ABI-PC1012Sxx.

The component video interface is presented on 3x RCA/Cinch gold-plated high quality connectors. The digital Audio 5.1 interface (S/PDIF) is presented on 1x gold-plated high quality RCA/Cinch connector.

A point-to-point link requires an ABI-AS1003S00 adapter at each end.

Characteristics:

Port 1:

- Y,+U/Pb/Cb+V/Pr/Cr+ S/PDIF on RJ45 (100 Ohm balanced)

-Port 2:

- Y on green RCA (75 Ohm unbalanced)

- U//Cb on blue RCA (75 Ohm unbalanced)

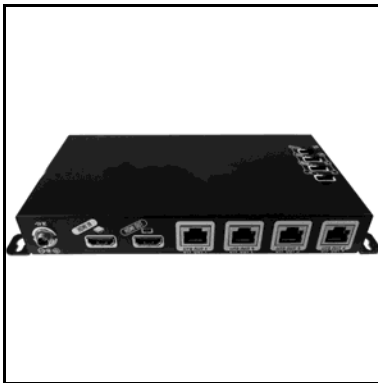
- V/Pr/Cr on red RCA (75 Ohm unbalanced)

- S/PDIF on white RCA (75 Ohm unbalanced)

WxHxD (mm): 90x50x32

0,14 kg

Individually packaged

ABI-AH2105SSP
HDMI 1.3c Twisted Pair Splitter - 1HDMI input, 4 RJ45 outputs


This integrated HDMI splitter/transmitter sends one HDMI signal to a local screen and 4 signals to distant screens, each over a single Cat5/6/7 or OmniMedia cable, up to the highest resolutions (1080p). The device is supplied with a 5VDC power supply.

Warning! NOT compatible with extenders of the ABI-AH20xx series

Characteristics:

-Supports HDMI 1.3c

-HDCP1.1 compliant

-7.1 uncompressed digital audio

Input: HDMI

Output: 1xHDMI, 4x RJ45

- 1080p@35m (no patchpanel in the link)

- 1080i/720p@50m

Package contains:

Splitter, 5VDC power supply

WxHxD(mm): 194x27x110

1 kg

1 set

ABI-AH2108SSP
HDMI 1.3c Twisted Pair Splitter - 2 HDMI inputs, 8 RJ45 outputs


This integrated HDMI splitter/transmitter has two HDMI inputs on a remote controllable input selector. It sends the chosen HDMI signal to a maximum of 8 distant screens, each over a single Cat5/6/7 or OmniMedia cable, up to the highest resolutions. The device is supplied with a 5VDC power supply.

Warning! NOT compatible with extenders of the ABI-AH20xx series

Characteristics:

-Supports HDMI 1.3c

-HDCP1.1 compliant

-7.1 uncompressed digital audio

Input: 2x HDMI

Output: 8x RJ45

- 1080p@35m (no patchpanel in the link)

- 1080i/720p@50m

Package contains:

Splitter, 5VDC power supply

WxHxD(mm): 438x44x158

2,2 kg

1 set

ABI-AH2101SRX
HDMI 1.3c Twisted Pair Receiver for splitters AH2105SSP & AH2108SSP - 1 RJ45 input, 1 HDMI output


This HDMI 1.3c compliant Receiver kit will enable long-distance reception of high resolution digital audio&video signals (up to 1080p) over a single Cat5/6/7 or OmniMedia cable, coming from an integrated HDMI splitter/transmitter like ABI-AH2105SSP or ABI-2108SSP. The receiver comes with a 5VDC power supply.

Warning! NOT compatible with extenders of the ABI-AH20xx series

Characteristics:
 -Supports HDMI 1.3c
 -HDCP1.1 compliant
 -7.1 uncompressed digital audio
 - 1080p@35m (no patchpanel in the link)
 - 1080i/720p@50m
 Package contains:
 Receiver, 5VDC power supply

WxHxD(mm): 93x25x60

0,82 kg

1 set

ABI-AH2001STR
HDMI 1.4a Twisted Pair Transmitter+Receiver kit - integrated IR passthrough


This HDMI 1.4a compliant Transmitter and Receiver kit will enable transmission of high resolution digital audio&video signals (up to 1080p) over a single Cat5/6/7 or OmniMedia cable. The devices support the latest 3D video formats as specified in the HDMI 1.4 release. Bidirectional IR passthrough is implemented over the same cable link. Transmitter and Receiver have connectors for IR eye and flasher. The kit comes complete with both IR devices and a 5VDC power supply for each side.

Warning! NOT compatible with splitters/receivers of the ABI-AH21xx series

Characteristics:
 -Supports HDMI 1.4a 3D video formats
 -HDCP1.1 compliant
 -7.1 uncompressed digital audio
 - 1080p@35m (no patchpanel in the link)
 - 1080i/720p@50m
 -Bidirectional wideband IR from 20kHz to 60kHz
 Kit contains:
 Transmitter, Receiver, IR Eye, IR Flasher, 2pcs 5VDC power supplies.

WxHxD(mm): 91x24x75

1 kg

1 set

ABI-PC1013Sxx
HDMI-HDMI V1.3 connection cords


High Speed HDMI connection cable compatible with HDMI 1.3 specification. Connector shielding and contacts are gold-plated for durable performance. The connector housings are overmolded onto the flexible 8mm black cable jacket.

Complies with:
 - Compatible with HDMI 1.3 specification

ABI-PC1013S01: 1,0m - 0,060kg
 ABI-PC1013S03: 3,0m - 0,180kg
 ABI-PC1013S05: 5,0m - 0,250kg

0 kg

Individually packaged

ABI-AR1002S00
IR-Bus single (LED) Transmitter on swanneck


Infrared remote control transmitter with cord that links to any abitana IR-Bus compatible device to enable the control of a DVD-player, VCR, satellite decoder, HiFi system, that is located in another room.

Warning: NOT compatible with HDMI device ABI-AH2001STR.

Characteristics:

- Coaxial 2,5mm connector
- Position pad (for double-sided adhesive tape or velcro)
- Infrared device on semi-rigid bendable lead

L(m): 1,8

0,041 kg

Individually packaged

ABI-AR2002S02
IR-Bus double stick-on LED transmitter (4Q 2011)


Dual stick-on infrared remote control transmitter with cord that links to any abitana IR-Bus compatible device to enable the control of a DVD-player, VCR, satellite decoder, HiFi system, that is located in another room.

Warning: NOT compatible with HDMI device ABI-AH2001STR.

Characteristics:

- Coaxial 2,5mm connector
- Double-sided adhesive tape
- Two infrared devices

L (m): 2m + 2x 1m

0,035 kg

Individually packaged

ABI-AR1003S00
IR-Bus Receiver - Long Reach - 36kHz (Sky compatible)


Infrared Remote Control Receiver with cord that links to any abitana IR-Bus compatible device to enable the control of a DVD-player, VCR, satellite decoder, HiFi system, that is located in another room.

Warning: NOT compatible with HDMI device ABI-AH2001STR.

Characteristics:

- Coaxial 2,5mm connector
- Positioning pad (for doublesided tape or velcro)
- Built-in microcontroller chip
- Up to 10m infrared receiver range
- 36 kHz infrared signal

L (m): 1,5

0,046 kg

Individually packaged

ABI-AR1004S02**IR-Bus Adapter RJ45 to 2x 2,5mm plug**

The ABI-AR1004S02 IR adapter is used for multiroom infrared remote control passthrough over the Smart Media home network. You can set up point-to-point IR links or point-to-multipoint links in combination with IR hub ABI-ER1001S00.

The adapter has an RJ45 plug on one side to connect to a wall outlet. On the other side two 2,5mm jack connects to either IR receiver or transmitter for multiroom remote control passthrough.

Characteristics:

- IR passthrough interface on 2,5mm jacks
- RJ45 plug cabling network interface

LxWxH(mm): 40x30x20

0,07 kg

Individually packaged

ABI-ER1001S00**IR-Bus HUB**

The IR-Bus HUB interconnects all IR-Bus transmitters and receivers linked through it's RJ45 ports on a common remote control bus. The hub is connected to a Smart Media power supply ABI-PS1001S11 and will power all connected IR-Bus transmitters and receiver devices via the cabling. This unit requires 5VDC from a power supply ABI-PS1001S11

Warning: NOT compatible with HDMI device ABI-AH2001STR.

WxHxD (mm): 71,2x80x65

0,28 kg

Individually packaged

ABI-PS1001S11

"Green" Power supply 5VDC - 4A for Smart Media MODULES



5VDC-4A power supply to feed Smart Media modules (and/or the IR-Bus). Supplied with a DIN-rail mounted 3-way power splitter. The splitter also has two frontside connectors to power link-based devices and a green power-on led.

Characteristics:

- Switchmode power supply
- Input 100-240VAC, max 600mA
- Output 5VDC, max 4000mA on 4 separate leads
- 50/60 Hz
- Supplied with mounting bracket & mains lead

0,365 kg

Individually packaged

ABI-PS1001SPC

Jumper cord for 5V Smart Media MODULES



This jumper cord allows daisy chaining of the 5VDC power supply circuit of Smart Media modules. Be aware that too many modules in a daisy chain can overload the power supply unit. Please always consult the modules' manuals to check how many modules can be connected to each power supply.

L= 0,5m

0,021 kg

Individually packaged

ABI-PS1005S00

"Green" Power Supply 5VDC 2,5A for Smart Media ADAPTERS



5VDC-2,5A power supply to feed Smart Media ADAPTERS. Low standby power consumption and high efficiency.

Characteristics:

- Switchmode power supply
- Input 100-240VAC, max 400mA, 50/60 Hz
- Output 5VDC, max 2500mA on 5,5x2,1x9 plug

0,15 kg

Individually packaged

ABI-PE1002S00**Mains power switch for Comm Center**

Double-throw mains circuit switch with light indicator to power-off all electronic modules in the Comm Center cabinet. Can be used to activate the video test pattern and audio pilot tone the of RF modulator ABI-EV1017S00.

Characteristics:

- Double-throw 240VAC - 16A
- Light indicator
- DIN-rail mounting - 1 std position wide

Complies with:

- NBN EN 60669-1
- NBN EN 60669
- VDE 0632 deel 1
- CE

WxHxD (mm): 18x86x70

0,07 kg

Individually packaged

ABI-PC1008S65**Shielded OmniMedia patch cord for Comm Center cabinet - IR-Bus power lead**

Shielded OmniMedia patch cord for Comm Center cabinet with an integrated low-voltage power lead. Often used with a baseband A/V link consisting of a pair of ABI-AC1001STX and ABI-AV1001SRX SCART adapters, an ABI-AR1003S00 infrared receiver and a ABI-AR1002S00 infrared transmitter. The power lead fits into feedthrough power connector ABI-DC1005S00.

Characteristics:

- RJ45 plug to RJ45 plug
- Frequency range: 0 - 862 MHz
- High-grade shielding
- Integrated low-voltage power lead

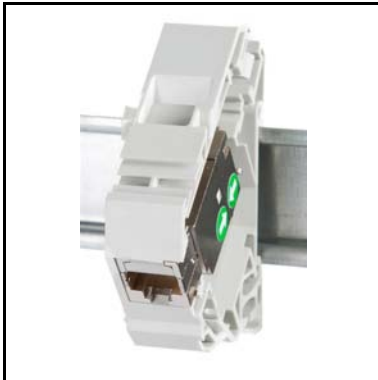
Complies with:

- ISO/IEC 60603-7
- ISO/IEC 11801
- ISO/IEC 15018

L (cm): 65

0,051 kg

Individually packaged

ABI-DC2006S00**Shielded RJ45 OmniMedia HD-Cat6 connector - DIN-rail mount**

Shielded RJ45 OmniMedia HD DIN-rail mounted connector to terminate universal OmniMedia cable (eg ABI-KP1003S00) in a Comms Cabinet. Used for telephony, data, TV and audio/video applications.

The HD connector distinguishes from its predecessor by an unmatched EMC shielding efficiency throughout the UHF range, allows cable termination without dedicated tooling and the simplified colour coding reduces wiring errors.

Characteristics:

- Frequency range: 0 - 862 MHz
- Toolless installation
- Straight (180°) cable-entry rear cover

Complies with:

- ISO/IEC 60603-7, connector
- ISO/IEC 11801, structured cabling
- EN 50173, structured cabling
- ISO/IEC 15018, residential cabling

WxHxD (mm): 17,8x80x65

0,052 kg

Individually packaged

ABI-DC1001S06**Unshielded RJ45 Cat6 connector - DIN-rail mount**

Unshielded RJ45 connector. Terminates UTP cables. The keystone latch mechanism maintains the connector in the DIN-rail holder. Adapted for telephony and data applications.

Characteristics:

- Frequency range: 0 - 250 MHz
- DIN-rail mount - 1 std position wide

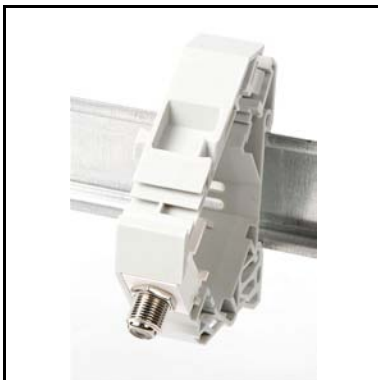
Complies with:

- ISO/IEC 60603-7, connector
- ISO/IEC 11801, structured cabling
- EN 50173, structured cabling
- ISO/IEC 15018, residential cabling

WxHxD (mm): 17,8x80x65

0,03 kg

Individually packaged

ABI-DC1003S00**F - F coax coupler - DIN-rail mount**

Ensures a quick termination of connectorised coaxial cables in the Comm Center cabinet. The keystone latch mechanism maintains the connector in the DIN-rail holder. Adapted for wideband audio/video applications. Frequently used to bring coaxial ports of modules ABI-EV10xxS00 to the front panel of the Comm Center cabinet.

Characteristics:

- Frequency range: 0 - 3 GHz
- DIN-rail mount - 1 std position wide

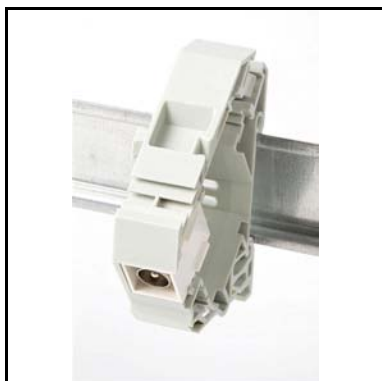
Complies with:

- IEC61169-24 F type

WxHxD (mm): 17,8x80x65

0,031 kg

Individually packaged

ABI-DC1004S00**IEC/M coax coupler - DIN-rail mount**

Ensures a quick termination of connectorised coaxial cables in the Comm Center cabinet. Frontside IEC male connector, rear side F coax connector. The keystone latch mechanism maintains the connector in the DIN-rail holder. Adapted for wideband audio/video applications.

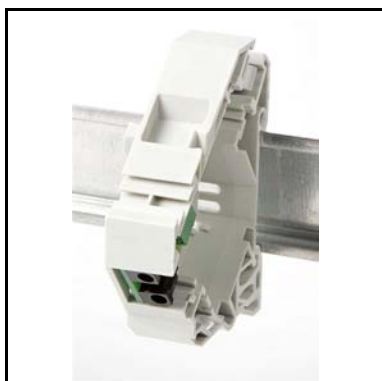
Characteristics:
 - Frequency range: 0 - 1000 MHz
 - DIN-rail mount - 1 std position wide

Complies with:
 - IEC61169.2 (DIN 45325) Male
 - EN 50083-2
 - EN 50083-7

WxHxD (mm): 17,8x80x65

0,031 kg

Individually packaged

ABI-DC1005S00**Double 5V power feedthrough connector - DIN-rail mount**

Double power feedthrough module. Brings low voltage power to the front panel of the Comm Center. Often used in combination with patch cord ABI-PC1008S65 to power the IR-Bus.

Characteristics:
 - Max. Current: 4A
 - DIN-rail mount - 1 std position wide

WxHxD (mm): 17,8x80x65

0,025 kg

Individually packaged

ABI-DC1008S00**Unshielded RJ45-RJ45 feedthrough connector - DIN-rail mount**

Unshielded RJ45-RJ45 feedthrough connector. The keystone latch mechanism maintains the connector in the DIN-rail holder. Adapted for telephony and data applications. Occupies 1 standard width on the DIN rail. Frequently used to bring ports of external devices (phone PABX, data switch,...) to the front panel of the Comm Center cabinet.

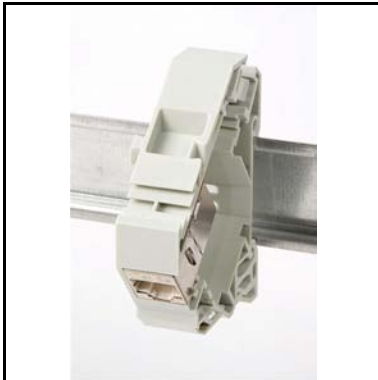
Characteristics:
 - Frequency range: 0 - 250 MHz
 - DIN-rail mount - 1 std position wide

Complies with:
 - ISO/IEC 60603-7, connector
 - ISO/IEC 11801, structured cabling
 - EN 50173, structured cabling
 - ISO/IEC 15018, residential cabling

WxHxD (mm): 17,8x80x65

0,027 kg

Individually packaged

ABI-DC1009S00
Shielded RJ45-RJ45 feedthrough connector - DIN-rail mount


Shielded RJ45-RJ45 feedthrough connector. The keystone latch mechanism maintains the connector in the DIN-rail holder. Adapted for telephony, data and video applications. Occupies 1 standard width on the DIN-rail. Frequently used to bring ports of external devices (phone PABX, data switch,...) to the front panel of the Comm Center cabinet.

Characteristics:

- Frequency range: 0 - 862 MHz
- DIN-rail mount - 1 std position wide

Complies with:

- ISO/IEC 60603-7, connector
- ISO/IEC 11801, structured cabling
- EN 50173, structured cabling
- ISO/IEC 15018, residential cabling

WxHxD (mm): 17,8x80x65

0,03 kg

Individually packaged

ABI-DC1011S00
F.O. Simplex ST multimode feedthrough connector - DIN-rail mount


Fiberoptics multimode simplex ST feedthrough connector. The keystone latch mechanism maintains the ST connector coupler in the DIN-rail holder. Occupies 1 standard width on the DIN-rail. The device allows quick termination of Fiber access, backbone or FTTH links in a user premise, industrial site, automation equipment, etc.

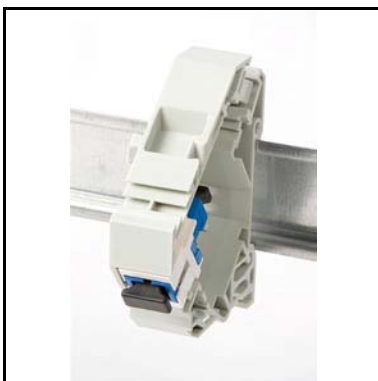
Characteristics:

- DIN-rail mount - 1 std position wide

WxHxD (mm): 17,8x80x65

0,03 kg

Individually packaged

ABI-DC1012S00
F.O. Simplex SC multimode feedthrough connector - DIN-rail mount


Fiberoptics multimode simplex SC feedthrough connector. The keystone latch mechanism maintains the SC connector coupler in the DIN-rail holder. Occupies 1 standard width on the DIN-rail. The device allows quick termination of Fiber access, backbone or FTTH links in a user premise, industrial site, automation equipment, etc.

Characteristics:

- DIN-rail mount - 1 std position wide

WxHxD (mm): 17,8x80x65

0,026 kg

Individually packaged

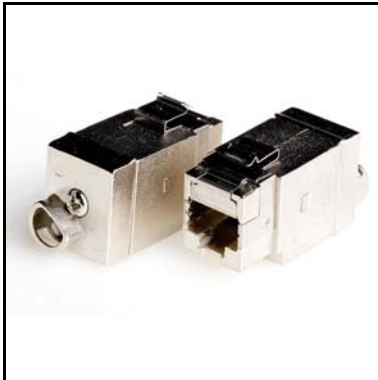
ABI-DC1999S00-25**Sidecovers for DIN-rail connectors - bag with 25 pairs**

Set comprising a right and a left cover for DIN-rail connectors of the ABI-DC1xxxS00 and ABI-DC2xxxS00 ranges. These covers can be used as dust covers to mask the lateral openings of the DIN rail connectors when they are used in other cabinets than Abitana's or on open DIN rails (eg industrial installations).

WxHxD (mm): 3,1x75x65

0,55 kg

Bag of 25 pairs

ABI-WA2006S00
Wall Outlets compatible with Keystone insert - RJ45 OmniMedia HD-Cat6


Outlet frames and faceplates of many vendors like Merten, Gira, Busch-Jaeger, Jung, are directly compatible with our keystone insert RJ45 OmniMedia HD connector type ABI-CP2006S00. Please consult our "faceplate compatibility list" to appreciate the wide number of possible combinations that have been tested.
Article ABI-WA2006S00 is identical to article reference ABI-CP2006S00.

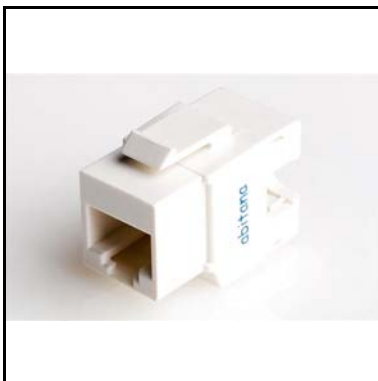
Characteristics:
- Frequency range: 0-862 MHz

Complies with:
- ISO/IEC 60603-7, connector
- ISO/IEC 11801, structured cabling
- EN 50173, structured cabling
- ISO/IEC 15018, residential cabling

WxHxD (mm): 17,3x19,9x35,4

0,032 kg

Individually packaged

ABI-WA2001S06
Wall Outlets compatible with Keystone insert - RJ45 UTP Cat6


Outlet frames and faceplates of many vendors like Merten, Gira, Busch-Jaeger, Jung, are directly compatible with our keystone insert RJ45 UTP connector type ABI-CP1001S06. Please consult our "faceplate compatibility list" to appreciate the wide number of possible combinations that have been tested.
Article ABI-WA2001S06 is identical to article reference ABI-CP1001S06.

Characteristics:
- Frequency range: 0 - 250 MHz

Complies with:
- ISO/IEC 60603-7, connector
- ISO/IEC 11801, structured cabling
- EN 50173, structured cabling
- ISO/IEC 15018, residential cabling

WxHxD (mm): 17,1x24x33,2

0,009 kg

Individually packaged

ABI-WA2106S00
Wall Outlet compatible Niko Pure,Intense,Original - RJ45 OmniMedia HD-Cat6


Wall outlet with 1 shielded RJ45 OmniMedia HD connector. Suitable for telephony, data and audio/video/TV applications. Fits in Niko Pure, Intense, Original faceplates.
The HD connector distinguishes from its predecessor by an unmatched EMC shielding efficiency throughout the UHF range, allows cable termination without dedicated tooling and the simplified colour coding reduces wiring errors.

Characteristics:
- Frequency range: 0 - 862 MHz
- Connector holder for Niko Pure, Intense, Original included

Complies with:
- ISO/IEC 60603-7, connector
- ISO/IEC 11801, structured cabling
- EN 50173, structured cabling
- ISO/IEC 15018, residential cabling

WxHxD (mm): 21x45x55

0,034 kg

Individually packaged

ABI-WA2101S06
Wall Outlet compatible Niko Pure, Intense, Original - RJ45 UTP Cat6


Wall outlet with 1 unshielded RJ45 connector. Suitable for telephony and data applications. Fits in Niko Pure, Intense, Original faceplates.

Characteristics:

- Frequency range: 0 - 250 MHz
- Connector holder for Niko Pure, Intense, Original included

Complies with:

- ISO/IEC 60603-7, connector
- ISO/IEC 11801, structured cabling
- EN 50173, structured cabling
- ISO/IEC 15018, residential cabling

WxHxD (mm): 21x45x55

0,014 kg

Individually packaged

ABI-WA22x6S00
Wall Outlets compatible BTicino - RJ45 OmniMedia HD-Cat6


Wall outlet with 1 shielded RJ45 OmniMedia HD connector. Suitable for telephony, data and audio/video/TV applications. Fits in bTicino Axolute faceplates. The HD connector distinguishes from its predecessor by an unmatched EMC shielding efficiency throughout the UHF range, allows cable termination without dedicated tooling and the simplified colour coding reduces wiring errors.

Characteristics:

- Frequency range: 0 - 862 MHz

Complies with:

- ISO/IEC 60603-7, connector
- ISO/IEC 11801, structured cabling
- EN 50173, structured cabling
- ISO/IEC 15018, residential cabling

- ABI-WA2206S00: compatible Living Intl, black
 ABI-WA2232600: compatible Light Tech, silver
 ABI-WA2256S00: compatible Light, white
 ABI-WA2266S06: compatible Axolute, white
 ABI-WA2277S00: compatible magic, ivory
 ABI-WA2286S00: compatible Axolute, dark grey
 ABI-WA2296S00: compatible Axolute, light grey

WxHxD (mm): 22x47x55

0,034 kg

Individually packaged

ABI-WA22x1S06**Wall Outlets compatible BTicino - RJ45 UTP Cat6**

Wall outlet with 1 unshielded RJ45 connector. Suitable for telephony and data applications. Fits in BTicino faceplates.

Characteristics:

- Frequency range: 0 - 250 MHz

Complies with:

- ISO/IEC 60603-7, connector
- ISO/IEC 11801, structured cabling
- EN 50173, structured cabling
- ISO/IEC 15018, residential cabling

ABI-WA2201S06: compatible Living Intl, black
 ABI-WA2231S06: compatible Light Tech, silver
 ABI-WA2251S06: compatible Light, white
 ABI-WA2261S06: compatible Axolute, white
 ABI-WA2271S06: compatible magic, ivory
 ABI-WA2281S06: compatible Axolute, dark grey
 ABI-WA2291S06: compatible Axolute, light grey

WxHxD (mm): 22x47x55

0,012 kg

Individually packaged

ABI-WA23x6S00**Wall Outlets half mosaic - RJ45 OmniMedia HD-Cat6**

Wall outlet with 1 shielded OmniMedia RJ45 connector behind a dust shutter. Suitable for telephony, data and audio/video/TV applications. Fits in standard faceplates with a mosaic cut-out of 45x45mm.

The HD connector distinguishes from its predecessor by an unmatched EMC shielding efficiency throughout the UHF range, allows cable termination without dedicated tooling and the simplified colour coding reduces wiring errors.

Characteristics:

- Frequency range: 0 - 862 MHz
- Dust shutter

Complies with:

- ISO/IEC 60603-7, connector
- ISO/IEC 11801, structured cabling
- EN 50173, structured cabling
- ISO/IEC 15018, residential cabling

ABI-WA2306S00: white
 ABI-WA2326S00: ivory

WxHxD (mm): 22,5x45x45

0,037 kg

Individually packaged

ABI-WA23x1S06**Wall Outlets half mosaic - RJ45 UTP Cat6**

Wall outlet with 1 unshielded RJ45 connector behind a dust shutter. Suitable for telephony and data applications. Fits in standard faceplates with a mosaic cut-out of 45x45mm.

Characteristics:

- Frequency range: 0 - 250 MHz
- Dust shutter

Complies with:

- ISO/IEC 60603-7, connector
- ISO/IEC 11801, structured cabling
- EN 50173, structured cabling
- ISO/IEC 15018, residential cabling

ABI-WA2301S06: white

ABI-WA2321S06: ivory

WxHxD (mm): 22,5x45x45

0,016 kg

Individually packaged

ABI-WA139xS00**Wall outlet blind plate - half mosaic**

Blind plate - comes in lieu of a wall outlet of the ABI-WA23xx series.

ABI-WA1390S00: white

ABI-WA1391S00: ivory

WxHxD (mm): 22,5x45x10

0,007 kg

Individually packaged

ABI-WA1010S00**Wall outlet faceplate & mounting ring for mosaic connectors - white**

Faceplate and mounting ring for mosaic connectors of 45x45mm or two connectors of 22,5x45mm (eg connectors and blind plate of the ABI-WA13xx or WA23xx series).

Characteristics:

- Plastic colour: white RAL9010
- Cutout 45x45mm (or 2x 22,5x45mm)

WxHxD (mm): 80x80x12

0,024 kg

Individually packaged

ABI-WA25x6S00
Wall outlets compatible Euromod - RJ45 OmniMedia HD-Cat6


Wall outlet with 1 shielded RJ45 OmniMedia HD connector behind a dust shutter. Suitable for telephony, data and audio/video/TV applications. Fits in standard faceplates with a Euromod cut-out of 50x50mm.

The HD connector distinguishes from its predecessor by an unmatched EMC shielding efficiency throughout the UHF range, allows cable termination without dedicated tooling and the simplified colour coding reduces wiring errors.

Characteristics:

- Frequency range: 0 - 862 MHz

Complies with:

- ISO/IEC 60603-7, connector
- ISO/IEC 11801, structured cabling
- EN 50173, structured cabling
- ISO/IEC 15018, residential cabling

ABI-WA2506S00: black

ABI-WA2556S00: white

WxHxD(mm): 25x50x45

0,039 kg

Individually packaged

ABI-WA25x1S06
Wall outlets compatible Euromod - RJ45 UTP Cat6


Wall outlet with 1 unshielded RJ45 connector behind a dust shutter. Suitable for telephony and data applications. Fits in standard faceplates with a Euromod cut-out of 50x50mm.

Characteristics:

- Frequency range: 0 - 250 MHz

Complies with:

- ISO/IEC 60603-7, connector
- ISO/IEC 11801, structured cabling
- EN 50173, structured cabling
- ISO/IEC 15018, residential cabling

ABI-WA2501S06: black

ABI-WA2551S06: white

WxHxD(mm): 25x50x45

0,016 kg

Individually packaged

ABI-CP2006S00
Shielded RJ45 OmniMedia HD-Cat6 connector - keystone latch


Shielded RJ45 OmniMedia HD connector to terminate universal OmniMedia cable (eg ABI-KP1003S00). Used for telephony, data, TV and audio/video applications. The HD connector distinguishes from its predecessor by an unmatched EMC shielding efficiency throughout the UHF range, allows cable termination without dedicated tooling and the simplified colour coding reduces wiring errors. Standard keystone latch makes it compatible with a wide variety of faceplate brands and finishes (lists available on demand) or a keystone patch panel like ABI-HE3002S24.

- Characteristics:
- Frequency range: 0 - 862 MHz
 - Toolless installation
 - Straight or 90° cable entry
 - Fits in 1HU 19" patchpanel ABI-HE3002S24

- Complies with:
- ISO/IEC 60603-7, connector
 - ISO/IEC 11801, structured cabling
 - EN 50173, structured cabling
 - ISO/IEC 15018, residential cabling

WxHxD (mm): 17,3x19,9x35,4 0,032 kg Individually packaged

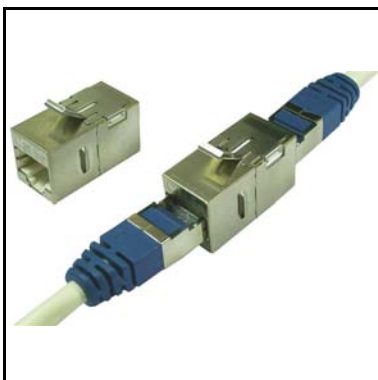
ABI-CP1001S06
RJ45 UTP Cat6 connector - keystone latch


Unshielded RJ45 connector to terminate UTP cable. Used for data and telephony applications. Standard keystone latch makes it compatible with a wide variety of faceplate brands and finishes (lists available on demand) or a keystone patch panel like ABI-HE3002S24.

- Characteristics:
- Frequency range: 0 - 250 MHz
 - Fits in 1HU 19" patchpanel ABI-HE3002S24

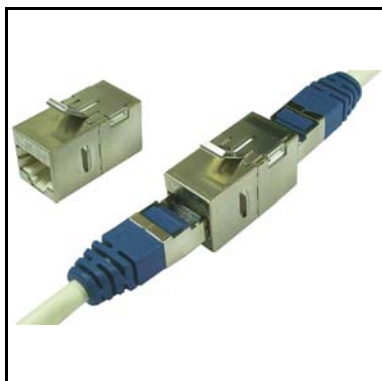
- Complies with:
- ISO/IEC 60603-7, connector
 - ISO/IEC 11801, structured cabling
 - EN 50173, structured cabling
 - ISO/IEC 15018, residential cabling

WxHxD (mm): 17,1x24x33,2 0,009 kg Individually packaged

ABI-CP1009S00
Shielded RJ45 to RJ45 Cat5e coupler - keystone latch


Shielded RJ45 jack to RJ45 jack coupler which allows quick interconnection of RJ45 patchcords to extend the reach of a temporary or semi-permanent connection. Standard keystone latch makes it compatible with a wide variety of faceplate brands and finishes (lists available on demand) or a keystone patchpanel like ABI-HE3002S24.

WxHxD (mm): 17,3x25x33,2 0,01 kg Individually packaged

ABI-CP1019S00**Shielded RJ45 to RJ45 Cat6 coupler - keystone latch**

Shielded RJ45 jack to RJ45 jack coupler which allows quick interconnection of RJ45 patchcords to extend the reach of a temporary or semi-permanent connection. Standard keystone latch makes it compatible with a wide variety of faceplate brands and finishes (lists available on demand) or a keystone patchpanel like ABI-HE3002S24.

WxHxD (mm): 17,3x25x33,2

0,01 kg

Individually packaged

ABI-CX1003S00**F to F coax coupler - keystone latch**

F - F coax coupler in a keystone mounting frame. Standard keystone latch makes it compatible with a wide variety of faceplate brands and finishes (lists available on demand) or a keystone patch panel like ABI-HE3002S24.

Characteristics:

- Frequency range: 0 - 3 GHz
- Fits in 1HU 19" patchpanel ABI-HE3002S24

Complies with:

- IEC61169-24 F type

WxHxD (mm): 13,9x21,4x29,7

0,008 kg

Individually packaged

ABI-CX1004S00**IEC/M to F coax coupler - keystone latch**

IEC male - F coax coupler in a keystone mounting frame. Standard keystone latch makes it compatible with a wide variety of faceplate brands and finishes (lists available on demand) or a keystone patch panel like ABI-HE3002S24.

Characteristics:

- Frequency range: 0 - 1000 MHz
- Fits in 1HU 19" patchpanel ABI-HE3002S24

Complies with:

- IEC61169.2 (DIN 45325)
- IEC61169-24 F type

WxHxD (mm): 16,7x21,4x31,4

0,009 kg

Individually packaged

ABI-CF1011S00**ST to ST multimode fiber coupler - keystone latch**

Fiber optics simplex ST multimode feedthrough connector in a keystone bezel holder. The device allows quick termination of fiber access, backbone or FTTH links in a user premise, industrial site, automation equipment, etc. Standard keystone latch makes it compatible with a wide variety of faceplate brands and finishes (lists available on demand) or a keystone patch panel like ABI-HE3002S24.

Characteristics:

- Fits in 1HU 19" patchpanel ABI-HE3002S24

WxHxD (mm): 13,9x21,4x29,7

0,009 kg

Individually packaged

ABI-CF1012S00**SC to SC multimode fiber coupler - keystone latch**

Fiber optics multimode simplex SC feedthrough connector in a keystone bezel holder. The device allows quick termination of fiber access, backbone or FTTH links in a user premise, industrial site, automation equipment, etc. Standard keystone latch makes it compatible with a wide variety of faceplate brands and finishes (lists available on demand) or a keystone patch panel like ABI-HE3002S24.

Characteristics:

- Fits in 1HU 19" patchpanel ABI-HE3002S24

WxHxD (mm): 13,9x21,4x29,7

0,009 kg

Individually packaged

ABI-CX1002S00-25**Coaxial male F crimp-on connector - 25pcs**

Coaxial male F connector to terminate ABI-KX1002S00 coax cable with crimp tool ABI-TA1005S00.

Use an appropriate crimping tool, hexagonal die size 8,23mm or 0,324"

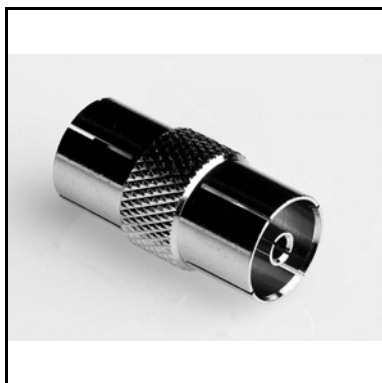
Complies with:

- IEC61169-24 F type

Diam.xL(mm): 11x19,3

0,102 kg

Bag of 25pcs

ABI-CX1005S00-25**Coaxial inline adapter - IEC/F to IEC/F - 25pcs**

Inline coax adapter to convert from IEC male to IEC female interface.

0 kg

Bag of 25 pcs

ABI-AP1002Sxx
Shielded link splitter RJ45 plug to 2x RJ45 jack


Allows the shared use of one 4-pair cable link between two separate applications. A unit of the same type is required at both ends of the cable link.

Characteristics:
- RJ45 plug to 2 x RJ45 jack

Complies with:
- ISO/IEC 60603-7

ABI-AP1002S01: Data+Data (Ethernet+Ethernet)
ABI-AP1002S04: Phone + Data (Ethernet)
ABI-AP1002S05: Phone + Phone

WxHxD (mm): 148x25,7x45

0,039 kg

Individually packaged

ABI-AP1004S08
Shielded link splitter RJ45 jack to 4 x RJ45 jack


Splitter from one RJ45 jack to 4 RJ45 jacks. All pins of the RJ45 jack are copied 1 to 1 to the pins of the four RJ45 jacks. Can be used to put several high impedance devices in parallel. Do not use for Ethernet, video or TV applications.

Characteristics:
- RJ45 jack to 4 x RJ45 jack
- Alle pins copied 1 on 1

Complies with:
- ISO/IEC 60603-7

WxHxD (mm): 86,4x25,7x46,1

0,058 kg

Individually packaged

ABI-AP1006Sxx
Serial adapter RJ45 jack to DB9 or DB25


Adapter to connect a printer or PC (e.g. for a point-of-sale system) with a serial interface (RS-232C) to a universal OmniMedia wall outlet by means of a standard RJ45-RJ45 connection lead.

ABI-AP1006S01: RJ45 jack to DB9 male
ABI-AP1006S02: RJ45 jack to DB9 female
ABI-PC1006S03: RJ45 jack to DB25 male
ABI-PC1006S04: RJ45 jack to DB25 female

WxHxD (mm): 55x15,8x45

0,029 kg

Individually packaged

ABI-KP1003S00-xxx**Universal 4 pair OmniMedia cable**

Quad-shielded 4 pair cable with one pair optimised for wideband signals. Suitable for high-speed data (up to Gigabit Ethernet), telephony, and wideband audio/video/TV applications. Reduced diameter and bending radius facilitate cable laying and termination in wall boxes. Can also be delivered in flex tube of 16mm O.D. Under part. nr. ABI-KP1003S01.

Characteristics:**Frequency range:**

- Pair 4: 0 - 862 MHz (30m)
- Pairs 1,2,3: 0 - 250 MHz (90m)

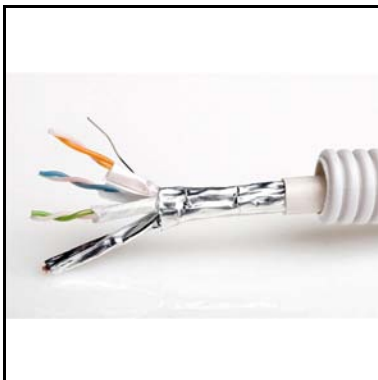
Complies with:

- ISO/IEC 11801 structured cabling
- ISO/IEC 15018 residential cabling
- EN50083-2 Class B 2002 tv cabling
- EN 50177 cable
- Directives: 89/336/EEC; 92/31/EEC

ABI-KP1003S00-100: 100m spool - 5,2kg
 ABI-KP1003S00-300: 300m reel - 17,2kg - diam.40cm - width 23cm
 ABI-KP1003S00-500: 500m reel - 29,8kg - diam 48cm - width 29cm

Diam.(mm): 7,2

kg

ABI-KP1003S01-xxx**Universal 4 pair OmniMedia cable in flextube**

Corrugated 16mm O.D. flex tube pre-equipped with quad-shielded 4 pair cable with one pair optimised for wideband signals. Suitable for high-speed data (up to Gigabit Ethernet), telephony, and wideband audio/video/TV applications. Reduced diameter and bending radius facilitate cable laying and termination in wall boxes. Can also be delivered as bare cable under part. Nr. ABI-KP1003S00.

Characteristics:**Frequency range:**

- Pair 4: 0 - 862 MHz (30m)
- Pairs 1,2,3: 0 - 250 MHz (90m)

Standards compliance:

- ISO/IEC 11801 structured cabling
- ISO/IEC 15018 residential cabling
- EN50083-2 Class B 2002 tv cabling
- EN 50177 cable
- Directives: 89/336/EEC; 92/31/EEC

ABI-KP1003S00-100: 100m spool - 9,2kg
 ABI-KP1003S00-250: 250m reel - 30,4kg - diam.63cm - width 42cm
 ABI-KP1003S00-500: 500m reel - 58,0kg - ONLY on SPECIAL ORDER

Tube Diam.(mm): 16

kg

ABI-KX1002S00-xxx**Tri-shield wideband coax cable**

Tri-shield wideband RG6-type coax cable, with high screening efficiency and low loss, particularly suited for TV and SAT aerial links. Can be terminated with ABI-CX1002S00 coax crimpable connector.

Characteristics:

- Frequency range: 0 - 2,5 GHz
- RG6 type, PVC jacket
- Triple high efficiency shielding, 60% braid
- Low attenuation

Complies with:

- ISO/IEC 15018 *** residential cabling
- EN50083-2 Class B 2002 tv cabling
- EN 50177 cable

Directives:

89/336/EEC; 92/31/EEC

 ABI-KX100200-050 Spool 50m 2,8kg
 ABI-KX1002S00-305 Reel 305m 18,0kg

Diam.(mm): 7,1

kg

ABI-HE2005Sxx
Xplore economical cabinets - 25cm wide


Comm Center cabinet in polymer for wall surface mounting.
Models -S22, -S33 and -S44 are fully equipped with DIN rails.
Suitable for small size projects or narrow spaces (25cm width)

This product is only available in France and The Netherlands

- Characteristics:
- Colour: RAL 7035
 - Cabling depth: 30mm
 - Width: 250mm
 - Front door not included

ABI-HE2005S22: 2 DIN rails - 26 DIN positions - 250x375x94mm - 0,85kg
ABI-HE2005S33: 3 DIN rails - 39 DIN positions - 250x500x94mm - 1,10kg
ABI-HE2005S44: 4 DIN rails - 52 DIN positions - 250x625x94mm - 1,40kg

kg

ABI-HE2005Sxy
Xplore economical cabinets - 25cm wide - with mounting board


Comm Center cabinet in polymer for wall surface mounting.
Models -S13 and -S24 are equipped with DIN rails and an expanded pvc board of 24x26cm to mount third party electronics like switches, hubs, routers,...The mounting board has a raster screenprint to simplify positioning of the equipment. It is easy to drill into, equipment can be fitted with tie-wraps or self-tapping screws
Suitable for small size projects or narrow spaces (25cm width)

This product is only available in France and The Netherlands

- Characteristics:
- Colour: RAL 7035
 - Cabling depth: 30mm
 - Width: 250mm
 - Front door not included
 - Mounting board 236x260mm

ABI-HE2005S13: 1 DIN rail - 13 DIN positions - 250x500x94mm - 1,10kg
ABI-HE2005S24: 2 DIN rails - 26 DIN positions - 250x625x94mm - 1,40kg

kg

ABI-HE2001Sxx
Xpress multifunctional cabinets - 35cm wide - with plexi door


Comm Center cabinet in polymer for wall surface mounting or partially recessed mounting. Fitted with DIN-rails, frontpanel and smoked transparent door. Suitable for small to medium size projects. On the -S22, -S33, -S44 models the frontpanels and side cover of the cabinet can be removed while patch cords stay in place, facilitating add-ons and changes with the system up and running.

- Characteristics:
- Colour: RAL 7035
 - Cabling depth: 30mm
 - Patch depth: 45mm
 - Removable front frame
 - Removable coverplates

Complies with:

- EN 60493-3
- IP40-7

ABI-HE2001S22: 2 DIN rails - 36 DIN positions - 355x450x142mm - 3,5kg
ABI-HE2001S33: 3 DIN rails - 54 DIN positions - 355x600x142mm - 4,5kg
ABI-HE2001S44: 4 DIN rails - 72 DIN positions - 355x750x142mm - 5,5kg

kg

ABI-HE2001Sxy

Xpress multifunctional cabinets - 35cm wide - with mounting board & plexi door



Comm Center cabinet in polymer for wall surface mounting or partially recessed mounting. Fitted with DIN-rails, frontpanel and smoked transparent door. Suitable for small to medium size projects. On the -S13 and -S24 models a 340x340mm mounting board is provided to mount third-party equipment like routers, switches, amplifiers, etc.

- Characteristics:
- Colour: RAL 7035
 - Cabling depth: 30mm
 - Patch depth: 45mm
 - Removable front frame
 - Removable coverplates
 - Smoked plexi front door
 - Mounting board 340x340mm

- Complies with:
- EN 60493-3
 - IP40-7

ABI-HE2001S13: 1 DIN rail - 18 DIN positions - 355x600x142mm - 4,5kg
 ABI-HE2001S24: 2 DIN rails - 36 DIN positions - 355x750x142mm - 5,5kg

kg

ABI-HE1004Sxx

Xpert metal surface mount cabinet



Comm Center cabinet in metal for wall surface mounting. Fitted with DIN-rails, frontpanel and smoked transparent door. Suitable medium to large home projects.

- Characteristics:
- Colour: RAL 7035
 - Cabling depth: 45mm
 - Patch depth: 85mm

- Complies with:
- IP41-7

ABI-HE1004S04: 4 DIN rails - 96 DIN positions - 550x650x215mm - 14,5kg
 ABI-HE1004S05: 5 DIN rails - 120 DIN positions - 550x800x215mm - 17,5kg
 ABI-HE1004S06: 6 DIN rails - 144 DIN positions - 550x950x215mm - 20,0kg

kg

ABI-HE1090S04

Cabinet blind plate - 4 DIN positions - pack of 4



Blind plate to cover spare positions in a Comm Center cabinet. A blindplate can be split into 4 pieces, each one DIN position wide.

- Characteristics:
- 4 DIN positions wide
 - Can be split in 4 pieces, 1 DIN position each

WxHxD(mm): 71,6x52x11

0,042 kg

Bag of 4pcs

ABI-HE3001S00**19 inch 3HU mounting frame with internal DIN-rail**

19" 3HU mounting frame fitted with an internal 22 position DIN-rail. Allows the use of DIN-rail based electronic modules and connectors in 19" cabinets and racks. The front panel can be removed independently from the chassis to allow quick changes to the system composition.

Characteristics:

- 22 positions DIN-rail
- Painted steel finish
- Independently removable frontpanel

WxHxD(mm): 485x134x70

1,1 kg

Individually packaged

ABI-HE3002S24**19 inch 1HU empty patchpanel for 24 keystone connectors**

19" 1HU empty patch panel for up to 24 keystone type connectors.

The panel can be used to create a customised combination of RJ45 jacks, coaxial couplers and fiber couplers.

Each panel is supplied with a pre-drilled rear-mounted bracket to bind the installation cables with a tie-wrap.

Characteristics:

- 24 keystone positions
- Painted steel, black finish
- Removable rear-mounted cable bracket

WxHxD(mm): 485x44x75

0,8 kg

Individually packaged

ABI-HE3004S00**19 inch 1HU Ring Run Patch cord organiser**

19" 1HU panel fitted with metal organiser rings. Patch cords can be neatly routed from a patch panel to the side of the cabinet and then back to another patch panel or an active device.

WxHxD(mm): 485x44x60

0,41 kg

Individually packaged

ABI-PC1002Sxx

Shielded OmniMedia patch cord for Comm Center



Shielded universal OmniMedia patch cord that is used in the Comm Center cabinet. Used for data (up to Gigabit Ethernet), telephony and wideband Audio/Video/TV.

- Characteristics:
- RJ45 plug to RJ45 plug
 - Frequency range: 0 - 862 MHz
 - High-grade shielding

- Complies with:
- ISO/IEC 60603-7
 - ISO/IEC 11801
 - ISO/IEC 15018

ABI-PC1002S45: 45cm - 0,030kg
 ABI-PC1002S60: 60cm - 0,034kg
 ABI-PC1002S75: 75cm - 0,040kg

kg Individually packaged

ABI-PC1001Sxx

Unshielded RJ45-RJ45 patch cord for Comm Center



Unshielded patch cord that is used in the Comm Center cabinet. Used for data (up to Gigabit Ethernet) and telephony.

- Characteristics:
- RJ45 plug to RJ45 plug
 - Frequency range: 0 - 250 MHz

- Complies with:
- ISO/IEC 60603-7
 - ISO/IEC 11801
 - ISO/IEC 15018

ABI-PC1001S45: 45cm - 0,026kg
 ABI-PC1001S60: 60cm - 0,032kg
 ABI-PC1001S75: 75cm - 0,036kg

kg Individually packaged

ABI-PC1003Sxx

Coax F - F patch cord for Comm Center cabinet



Coax F-F patch cord that is used in the Comm Center cabinet for CaTV, video and satellite applications.

- Characteristics:
- F male to F male connector
 - Frequency range: 0 3 GHz
 - High-grade shielding

- Complies with:

ABI-PC1003S45: 45cm - 0,043kg
 ABI-PC1003S60: 60cm - 0,044kg
 ABI-PC1003S75: 75cm - 0,045kg

kg Individually packaged

ABI-PC1012Sxx
Shielded OmniMedia RJ45 - RJ45 connection cord


Shielded universal OmniMedia connection cord. Used for data (up to Gigabit Ethernet), telephony and wideband Audio/Video/TV.

- Characteristics:
- RJ45 plug to RJ45 plug
 - Frequency range: 0 - 862 MHz
 - High-grade shielding

- Complies with:
- ISO/IEC 60603-7
 - ISO/IEC 11801
 - ISO/IEC 15018

ABI-PC1012S01: 1,5m - 0,074kg
 ABI-PC1012S03: 3,0m - 0,131kg
 ABI-PC1012S05: 5,0m - 0,221kg

kg Individually packaged

ABI-PC1004Sxx
Unshielded RJ45 - RJ45 connection cord for phone & data


Unshielded twisted pair connection cord for data (up to Gigabit Ethernet) and telephony applications

- Characteristics:
- RJ45 plug to RJ45 plug
 - Frequency range: 0 - 250 MHz

- Complies with:
- ISO/IEC 60603-7
 - ISO/IEC 11801
 - ISO/IEC 15018

ABI-PC1004S01: 1,5m - 0,063kg
 ABI-PC1004S03: 3,0m - 0,112kg
 ABI-PC1004S05: 5,0m - 0,179kg

kg Individually packaged

ABI-PC1005Sxx
Unshielded RJ45 - RJ11 connection cord


Unshielded 2-pair RJ45 - RJ11 connection cord for fax, modem and phone.

- Characteristics:
- RJ45 plug to RJ11 plug
 - Frequency range: 0 - 250 MHz

- Complies with:
- ISO/IEC 60603-7
 - ISO/IEC 11801
 - ISO/IEC 15018

ABI-PC1005S01: 1,5m - 0,063kg
 ABI-PC1005S03: 3,0m - 0,112kg
 ABI-PC1005S05: 5,0m - 0,179kg

kg Individually packaged

ABI-PC1006Sxx**IEC coax connection cord for TV, video and radio**

Wideband coaxial cord to connect a TV set, videorecorder or tuner's antenna input.

Characteristics:
- IEC male to IEC female connector
- Frequency range: 0 - 1000 MHz

Complies with:
- IEC61169.2 (DIN 45325)

ABI-PC1006S01: 1,5m - 0,063kg
ABI-PC1006S03: 3,0m - 0,112kg
ABI-PC1006S05: 5,0m - 0,179kg

kg

Individually packaged

ABI-TA1001S00**IDC tool to mount twisted pair connectors**

Economic handheld tool to insert the wires of twisted pair cables in the IDC contacts of RJ45 connectors.

Characteristics:
Used for twisted pair connectors of series:
- ABI-CP1001S06
- ABI-DC1001S06
- ABI-WA2xx1S06

WxHxD(mm): 40x103x5

0,008 kg

Individually packaged

ABI-TA1002S00**Wire Cutting Pliers to mount twisted pair connectors**

Economic cutters to trim the wires of twisted pair cables.

WxHxD(mm): 68x128x12

0,08 kg

Individually packaged

ABI-MM1001S40
Smart Music - Stereo 2x20W RMS class-D DIN rail amplifier


The 2x20W RMS stereo Class D audio power amplifier provides Class AB amplifier performance with Class D efficiency. This device works from a single 14VDC supply, has click-and-pop suppression as well as short-circuit and thermal protection.

The amplifier has a direct line level audio input and output on front side 3,5mm stereo jacks. Loudspeakers are connected via spring-loaded contacts on the front. The device can be connected to either a ABI-MM1002S05 Multiroom Multisource Module, or directly to a MM1000Sxx Radio & Control Module (RCM). The gain and mute of the amplifier can be controlled either by a Smart Music RCM or by a remote volume control potentiometer (ABI-MM1005SSI or ABI-MM1005SWH) via the topmounted RJ45 or by a 0-10V home automation control signal on a dedicated jack.

Characteristics:

- Line level audio input on RJ45 and 3,5mm stereo jack
- Line level audio output on 3,5mm stereo jack
- Speaker outputs on spring-loaded contacts, max 2mm²
- Output power: max 2x20W RMS into 4 Ohm loads
- Max. Gain approx 29,5dB
- Power supply voltage: 14VDC
- THD+N @ 5W, 1kHz: 0,04%
- Freq range (-3dB): 20Hz to 22kHz
- SNR approx. 90dB
- Crosstalk > 68dB (20Hz to 22kHz)
- Efficiency approx 90%
- Switching frequency (spread spectrum) :300kHz+6kHz

Complies with:
EMI: EN55022B

WxHxD (mm): 52x80x65

0,26 kg

Individually packaged

ABI-MM1002S05
Smart Music - Multiroom Multisource Module - 5 zones


The Multiroom MultisourceModule allows you to create a simple multiroom audio system by interconnecting the Radio & Control Modules from different rooms. Each RCM can listen to either its built-in FM tuner, to a local music source (input1) or to music coming from the Multiroom Multisource Module (input2). One of the five zones can be designated master zone. For each zone an individual central music source can be plugged in and override the function of the master zone. Connections to the RCM's and to the amplifiers are through RJ45 ports, greatly simplifying the installation work.

Characteristics:

- 5 amplifier ports on RJ45 jack
- 5 RCM ports on RJ45 jack
- 5 central stereo inputs on 3,5mm stereo jack
- 1 central stereo master output on 3,5mm stereo jack
- all inputs & outputs line level stereo
- no extra power supply required
- DIN-rail mount - 9 std positions wide

WxHxD (mm): 157x80x65

0,7 kg

Individually packaged

ABI-MM1009S00**Smart Music - Audio Adapter RJ45 to 2x 3,5mm stereo jack**

ABI-MM1009S00 is a miniature adapter that permits the transmission of two individual line level stereo signals over OmniMedia cable. The adapter is used for point-to-point or point-to-multipoint audio distribution in a Smart Media network. It can also be used as input coupler to connect a third party audio source to a multiroom multisource Smart Music network.

The adapter features an RJ45 jack on one side to connect to the wall outlet. On the other side, two stereo 3,5mm jacks connect to line level input or output ports of two independent audio interfaces.

Characteristics:

- 2 stereo line level interfaces on 3,5mm stereo jack
- Up- and/or downstream links for each port
- RJ45 plug cabling network interface

WxHxD (mm): 40x30x20

0,07 kg

Individually packaged

ABI-MM1000Sxx**Smart Music - Radio & Control Module**

The Radio & Control Module fits in a double wall backbox. It incorporates a high-sensitivity FM RDS tuner with built-in clock radio and sleep function. The unit can be manually tuned into a station or scanned for the next station in the range. The name of the radio station is shown on the backlit LCD display.

The Radio & Control Module can furthermore select one of two extra audio inputs, like a local MP3 player, a local CD player or network music.

The unit sends volume-controlled audio to a pair of power amplifiers feeding the on-wall, in-wall or in-ceiling speakers.

Several zones in the house, each equipped with these modules or with 3rd party HiFi equipment, can be interconnected by a multizone module to obtain a true multiroom multisource musicsystem.

Characteristics:**FM stereo tuner:**

- 87,5-108,0 MHz
- SNR (mono): 65dB A weighted
- Station name from Radio Data System
- Phase Locked Loop digital tuner
- Digital station scanning
- Digital volume control

Audio line level specs:

- Input voltage max. 2,0V RMS
- Output voltage 0 - 2,0V <RMS
- SNR: 80dB A weighted
- Channel separation: > 60dB
- Power consumption: < 1W
- Power supply voltage: 12V DC

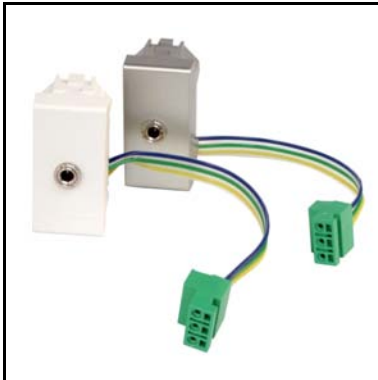
ABI-MM1000S00: silver frontpanel

ABI-MM1000SWH: white frontpanel

WxHxD (mm): 64x44x25

0,1 kg

Individually packaged

ABI-MM1000Cxx
Smart Music 3,5mm jack input module for TV/Music Player


This local music input module is situated to the left of the Radio & Control Module in a quad wallbox. It has a rear-side 3,5mm stereo jack (default source) and front-side 3,5mm stereo jack (override source). The rear-side jack can be connected to a TV set to play back it's sound on the Smart Music in-wall system, by choosing the INPUT1 selection on the RCM. If a stereo source (e.g. An MP3 player) is inserted into the front-side stereo jack, the TV is disconnected and the front-side source is played back instead.

ABI-MM1000CSI: Silver faceplate
 ABI-MM1000CWH: White faceplate

WxHxD (mm): 22x47x55

0,03 kg

Individually packaged

ABI-MM1005Sxx
Smart Music - Remote Potentiometer Volume Control


With a volume controller ABI-MM1005Sxx you can switch on/off and change the volume of a Smart Music amplifier.

The combination of an extra amplifier and this volume controller offers an elegant solution to provide independent control over an extra room in a common music zone.

This volume controller is built into the wall using mounting kit ABI-MM1004Sxx , available in a discrete white or a stylish silver finish.

ABI-MM1005SSI: silver finish
 ABI-MM1005SWH: white finish

0,075 kg

ABI-MM1004Xyz
Smart Music Wall mounting kit


This mounting kit comprises all the elements that are necessary to mount in a solid or in a dry wall either a Radio & Control Module (ABI-MM1000Sxx) either a Remote Volume Control (ABI-MM1005Sxx).

By using this kit the installation of these components can be anticipated (during first fix) or postponed (to install them when they are really needed).

The kit comprises backboxes for solid and dry wall, mounting frame, decorative frame and three or four blanc insert panels and is available in a discrete white or a stylish silver finish to match the inserted components.

ABI-MM1004SSI: 3 gang - silver finish - 0,25kg
 ABI-MM1004SWH: 3 gang - white finish - 0,15kg
 ABI-MM1004LSI: 4 gang - silver finish - 0,26kg
 ABI-MM1004LWH: 4 gang - white finish - 0,16kg

0,25 kg

1 kit

ABI-PS1003S00
"Green" Power Supply 14VDC - 3,8A for Smart Music MODULES


14VDC-3,8A power supply to feed Smart Music modules (and/or the IR-Bus). Equipped with 1 low-voltage output lead.

Characteristics:

- Switchmode power supply
- Input 100-240VAC, 50/60 Hz
- Output 14VDC, max 3800mA

0,42 kg

Individually packaged

ABI-PS1003SPC
Jumper cord for 14V Smart Music MODULES


This jumper cord allows daisy chaining of the 14VDC power supply circuit of Smart Music modules. Be aware that too many modules in a daisy chain can overload the power supply unit. Please always consult the modules' manuals to check how many modules can be connected to each power supply.

L= 0,5m

0,021 kg

Individually packaged

ABI-DC3011S00
DIN rail Double Speaker Terminal with spring-loaded contacts


DIN-rail mounted speaker terminal to terminate standard speaker cable up to 2x2mm² in a DIN-rail cabinet. Perfectly suited to prewire a home for stereo or surround multiroom audio. The spring loaded contacts accept solid or stranded wires and retain good contact even in case of wire sagging.

Quick connection: strip and insert.

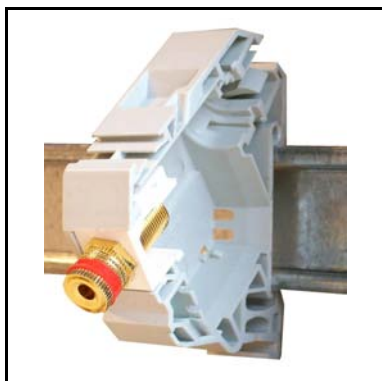
Characteristics:

- Rear interface: bare wire or bushing up to 2x2mm²
- Front interface: bare wire or bushing up to 2x2m²
- Spring loaded contacts
- 1 DIN position wide
- Standard DIN-rail holder fits in cabinets like: ABI-HE10xx series, ABI-HE20xx series

WxHxD (mm): 17,8x80x65

0,031 kg

Individually packaged

ABI-DC3001Sxx
DIN-rail Speaker Terminal - Goldplated


DIN-rail mounted speaker terminal to terminate standard 1,5mm² to 6mm² speaker wire in a DIN-rail cabinet. Perfectly suited to prewire a home for stereo or surround multiroom audio. The strong gold plating guarantees long lasting corrosion free contact. Quick connection by screw-down or plug-in terminals. Red or black band to identify the speaker wire polarity.

Rear interface:
bare wire or bushing 1,5mm² to 6mm² (AWG9 to 15)

Front interface:
- 4mm banana plug
- bare wire or bushing
- spade terminal

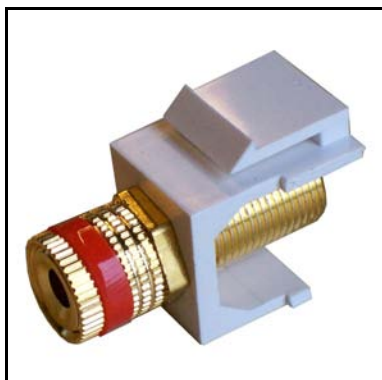
Gold plated, Red or black identification ring
Standard DIN-rail holder fits in cabinets like:
ABI-HE10xx series, ABI-HE20xx

ABI-DC3001SRD: Red ring
ABI-DC3001SBK: Black ring

WxHxD (mm): 17,8x80x65

0,035 kg

Individually packaged

ABI-CS3001Sxx
Keystone Speaker Terminal - Goldplated


Keystone speaker terminal to terminate standard 1,5mm² to 6mm² speaker wire in wall outlet faceplates and patchpanels. Perfectly suited to prewire a home for stereo or surround multiroom audio. The strong gold plating guarantees long lasting corrosion free contact. Quick connection by screw-down or plug-in terminals. Front ring with a red or black band to identify the speaker wire polarity.

Rear interface: bare wire or bushing 1,5mm² to 6mm² (AWG9 to 15)

Front interface:
- 4mm banana plug
- bare wire or bushing
- spade terminal

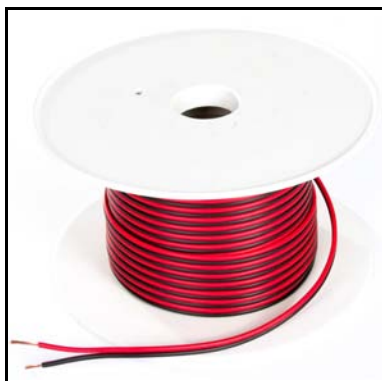
Gold plated
Red or black identification ring
Standard "Keystone" insert format fits in:
- standard keystone wall outlet faceplates
- keystone patchpanels like ABI-HE3002S24

ABI-CS3001SRD: Red ring
ABI-CS3001SBK: Black ring

WxHxD (mm): 16,4x21x30,2

4 kg

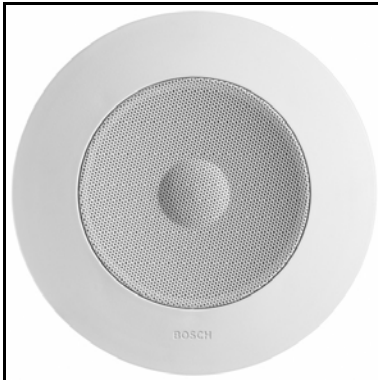
Individually packaged

ABI-KS3001S15-100
Speaker cable 2x 1,5mm² - Red/Black - 100m


Multistrand flexible loudspeaker cable.
Red and Black insulated wires can easily be separated.

5 kg

L= 100m spool

ABI-LSECO4SRO**ECO4 RO In-ceiling/wall round wetroom speaker - 4"**

The ECONomic 4 RO is a compact round 9 Watt RMS ceiling or panel loudspeaker with excellent audio performance at an unbeatable price/performance ratio. The clear sound image makes it ideal for areas with lots of background noise. The loudspeaker is IPx4 water protected from the front, making it suited for humid environments like kitchen, bathroom, atrium and swimming pool. It is easy to install with its integral mounting clips and is finished in an attractive off-white color. The discrete styling of this loudspeaker complements today's interior lighting.

Characteristics:

- Maximum power: 9 Watt RMS
- Efficiency (at 1W, 1 kHz, 1 m): 88 dB
- Frequency range (-10dB): 60 Hz to 18 kHz
- Rated impedance: 4 Ohm
- Color off-white (RAL 9010)
- Operating temperature: -25 °C to +55 °C (-13 °F to +131 °F)
- Storage temperature: -40 °C to +70 °C (-40 °F to +158 °F)
- Relative humidity: <95%
- Mounting cutout (mm): diam.145

Diam x D (mm): 160x60

0,75 kg

Individually packaged

ABI-LSEVO4SOD**EVO4 OD Cabinet speaker - weatherproof - 4" - 2way**

The EVOLution 4 OD are premium sound cabinet loudspeakers, two-way systems with woofer and tweeter, intended for clear reproduction of speech or foreground and background music to be used for indoor and outdoor applications. The loudspeakers are available in a dark (default choice) or light color (special request) and have selectable 8 ohm, 70 V and 100 V inputs.

Typical applications are waiting room, hall, study, patio, wintergarden, home office, fitness centre, showroom, etc.

The cabinets can be mounted horizontally to allow the loudspeaker to be directed up or down, or vertically to allow left and right rotation by means of a steel U-shaped wall bracket (standard supplied).

Characteristics:

- Nominal power: 15 W RMS
- Efficiency: (at 1W, 1 kHz, 1 m): 86dB
- Frequency range (-10 dB): 95 Hz to 19.5 kHz
- Impedance 8 / 326 / 667 ohm
- Color White (RAL 9010) or Charcoal (RAL 7021)
- Operating temperature -25 °C to +55 °C (-13 °F to +131 °F)
- Storage temperature -40 °C to +70 °C (-40 °F to +158 °F)
- Relative humidity <95%

WxHxD (mm): 136x205x117

2 kg

Individually packaged

ABI-LSEVO5SRO
EVO5 RO In-Wall/Ceiling round speaker - 5,25"- 2way


The EVOLution 5 RO are premium two-way systems with rigid PolyPropylene cone woofers and high-power 0,5" Mylar dome tweeters. These speakers surprise by the powerfull precise bass and silky smooth midrange and highs. These nice allrounders will never tire either as background music or as surround sound speakers.

Typical applications are in lounge, dining room, kitchen, bedroom. The round design makes a nice fit with a majority of circular light fixtures, the frame and grilles can be painted to match the ceiling or walls or to provide a challenging spot of color.

The units are easy to mount by the self-pivoting clamp dogs.

Connection to the speaker cables is done through spring-loaded terminals.

Characteristics:

- Woofer: 5,25" PolyPropylene (PP) cone, Rubber edge
- Tweeter: 0,5" Mylar (PET) dome
- Filter 6dB/Oct
- Nominal power: 35 W
- Efficiency: (at 1W, 1 kHz, 1 m): 90dB
- Frequency range: 65 Hz to 20 kHz
- Impedance 8 Ohm
- Color: white
- Metal grille
- Fast self-turning mounting dogs
- Mounting cutout (mm) diam. 175

Diam. X D (mm) diam. 204x75

1,27 kg

Individual package

ABI-LSEVO5SSQ
EVO5 SQ In-Wall/Ceiling square speaker - 5,25"- 2way


The EVOLution 5 SQ are premium two-way systems with rigid PolyPropylene cone woofers and high-power 0,5" Mylar dome tweeters. These speakers surprise by the powerfull precise bass and silky smooth midrange and highs. These nice allrounders will never tire either as background music or as surround sound speakers.

Typical applications are in lounge, dining room, kitchen, bedroom. The stylish square design makes a nice fit with a majority of modern light fixtures and straight-lined sober interiors, the frame and grilles can be painted to match the walls or to provide a challenging spot of color.

The units are easy to mount by the self-turning mounting dogs.

Connection to the speaker cables is done through spring-loaded terminals.

Characteristics:

- Woofer: 5,25" PolyPropylene (PP) cone, Rubber edge
- Tweeter: 0,5" Mylar (PET) dome
- Filter 6dB/Oct
- Nominal power: 35 W
- Efficiency: (at 1W, 1 kHz, 1 m): 90dB
- Frequency range: 65 Hz to 20 kHz
- Impedance 8 Ohm
- Color: white
- Metal grille
- Fast self-turning mounting dogs
- Mounting cutout (mm): diam.148

HxWxD (mm): 180x180x75

1,27 kg

Individual package

ABI-LSEMO5SSQ
EMO5 SQ In-Wall/Ceiling square speaker - 5,25" - 2way


The EMOtion 5 SQ are premium two-way systems with very rigid 5,25" aluminium cone woofers and high-power 0,75" ferrofluid cooled aluminium dome tweeters. These speakers combine precise dry bass with incredible openness in the midrange and crystal-clear highs. They excell by bringing every musical detail to life and by the precise spatial positioning in both low and high volume situations. Power and accuracy at an incredible price, but no compromise to quality.

Typical applications are home theater, lounge, dining room, large kitchen, master bedroom. The stylish square design makes a nice fit with a majority of modern light fixtures and straight-lined sober interiors, the frame and grilles can be painted to match the walls or to provide a challenging spot of color.

The units are easy to mount by the self-turning mounting dogs.

Connection to the speaker cables is done through heavy gold-plated spring-loaded terminals.

Characteristics:

- Woofer: 5,25" Aluminium (Al) cone, Rubber edge
- Tweeter: 0,75" Aluminium (Al) dome
- Filter 12dB/Oct
- Nominal power: 40 W
- Efficiency: (at 1W, 1 kHz, 1 m): 88dB
- Frequency range: 60 Hz to 20 kHz
- Impedance 8 Ohm
- Color: white
- Metal grille
- Fast self-turning mounting dogs
- Mounting cutout (mm): diam.148

LxWxD (mm): 180x180x75

1,34 kg

Individual package

ABI-LSEMO6SRO
EMO6 RO In-Wall/Ceiling round speaker - 6,5" - 2way


The EMOtion 6 RO are premium two-way systems with very rigid 6,5" aluminium cone woofers and high-power 0,75" ferrofluid cooled aluminium dome tweeters. These speakers combine precise dry bass with incredible openness in the midrange and crystal-clear highs. They excell by bringing every musical detail to life and by the precise spatial positioning in both low and high volume situations. Power and accuracy at an incredible price, but no compromise to quality.

Typical applications are home theater, lounge, dining room, large kitchen, master bedroom. The round design makes a nice fit with a majority of circular light fixtures, the frame and grilles can be painted to match the ceiling or walls or to provide a challenging spot of color.

The units are easy to mount by the self-turning mounting dogs.

Connection to the speaker cables is done through heavy gold-plated spring-loaded terminals.

Characteristics:

- Woofer: 6,5" Aluminium (Al) cone, Rubber edge
- Tweeter: 0,75" Aluminium (Al) dome
- Filter 12dB/Oct
- Nominal power: 45 W, max. power
- Efficiency: (at 1W, 1 kHz, 1 m): 88dB
- Frequency range: 60 Hz to 20 kHz
- Impedance 8 Ohm
- Color: white
- Metal grille
- Fast self-turning mounting dogs
- Mounting cutout (mm): diam.148

Diam.x D (mm): 240x75

1,7 kg

Individual package

Index

product number		page
ABI-AC1001S00	Balun for FM-VHF-UHF, variable gain	3
ABI-AC1002S00	Balun for FM-VHF-UHF, fixed gain	3
ABI-AC1003S00	Adapter for Composite Video signal	11
ABI-AC1004S00	Balun for FM, fixed gain	3
ABI-AC1007S00	Balun for FM-VHF-UHF with gain adjustment and IR-Bus	4
ABI-AC1030S00	Radio/TV coaxial diplex filter	4
ABI-AH2001STR	HDMI 1.4a Twisted Pair Transmitter+Receiver kit - integrated IR passthrough	13
ABI-AH2101SRX	HDMI 1.3c Twisted Pair Receiver for splitters AH2105SSP & AH2108SSP - 1 RJ45 input, 1 HD	13
ABI-AH2105SSP	HDMI 1.3c Twisted Pair Splitter - 1HDMI input, 4 RJ45 outputs	12
ABI-AH2108SSP	HDMI 1.3c Twisted Pair Splitter - 2 HDMI inputs, 8 RJ45 outputs	12
ABI-AP1002Sxx	Shielded link splitter RJ45 plug to 2x RJ45 jack	31
ABI-AP1004S08	Shielded link splitter RJ45 jack to 4 x RJ45 jack	31
ABI-AP1004S09	Shielded link splitter RJ45 jack to 4 x RJ45 jack (phone)	9
ABI-AP1006Sxx	Serial adapter RJ45 jack to DB9 or DB25	31
ABI-AR1002S00	IR-Bus single (LED) Transmitter on swanneck	14
ABI-AR1003S00	IR-Bus Receiver - Long Reach - 36kHz (Sky compatible)	14
ABI-AR1004S02	IR-Bus Adapter RJ45 to 2x 2,5mm plug	15
ABI-AR2002S02	IR-Bus double stick-on LED transmitter (4Q 2011)	14
ABI-AS1003S00	Component Video + S/PDIF Audio 4xRCA to RJ45 adapter (YPbPr+S/PDIF)	12
ABI-AS1016STR	SCART/RJ45 input-output adapter for ABI-EV1017S00 & ABI-EV1018S00	11
ABI-AV1001STR	SCART-RJ45 CVBS HQ Extender kit - integrated IR passthrough & 5V local power supply	10
ABI-AV1002STR	SCART-RJ45 CVBS Extender kit with integrated IR-Bus devices & PC1008/DC1005 for central p	10
ABI-AX1001S02	Coax 2-way splitter (-4dB) with F connectors	4
ABI-CF1011S00	ST to ST multimode fiber coupler - keystone latch	29
ABI-CF1012S00	SC to SC multimode fiber coupler - keystone latch	29
ABI-CP1001S06	RJ45 UTP Cat6 connector - keystone latch	27
ABI-CP1009S00	Shielded RJ45 to RJ45 Cat5e coupler - keystone latch	27
ABI-CP1019S00	Shielded RJ45 to RJ45 Cat6 coupler - keystone latch	28
ABI-CP2006S00	Shielded RJ45 OmniMedia HD-Cat6 connector - keystone latch	27
ABI-CS3001Sxx	Keystone Speaker Terminal - Goldplated	45
ABI-CX1002S00-25	Coaxial male F crimp-on connector - 25pcs	29
ABI-CX1003S00	F to F coax coupler - keystone latch	28
ABI-CX1004S00	IEC/M to F coax coupler - keystone latch	28
ABI-CX1005S00-25	Coaxial inline adapter - IEC/F to IEC/F - 25pcs	30
ABI-DC1001S06	Unshielded RJ45 Cat6 connector - DIN-rail mount	18
ABI-DC1003S00	F - F coax coupler - DIN-rail mount	18
ABI-DC1004S00	IEC/M coax coupler - DIN-rail mount	19
ABI-DC1005S00	Double 5V power feedthrough connector - DIN-rail mount	19
ABI-DC1008S00	Unshielded RJ45-RJ45 feedthrough connector - DIN-rail mount	19
ABI-DC1009S00	Shielded RJ45-RJ45 feedthrough connector - DIN-rail mount	20
ABI-DC1011S00	F.O. Simplex ST multimode feedthrough connector - DIN-rail mount	20
ABI-DC1012S00	F.O. Simplex SC multimode feedthrough connector - DIN-rail mount	20
ABI-DC1999S00-25	Sidcovers for DIN-rail connectors - bag with 25 pairs	21
ABI-DC2006S00	Shielded RJ45 OmniMedia HD-Cat6 connector - DIN-rail mount	18
ABI-DC3001Sxx	DIN-rail Speaker Terminal - Goldplated	45
ABI-DC3011S00	DIN rail Double Speaker Terminal with spring-loaded contacts	44
ABI-EL1001S00	Fast Ethernet Switch - 5 ports 10/100bT - DIN-rail	6
ABI-EL2002S00	Gigabit Ethernet Switch - 8 ports 10/100/1000bT - DIN-rail	6
ABI-ER1001S00	IR-Bus HUB	15

Index

product number		page
ABI-ET2001S00	Telephony module without call confidentiality function	8
ABI-ET2003S00	Modem-phone-fax splitter module with ADSL filter	8
ABI-ET2004S00	Telephony module - 4 line splitter/combiner	8
ABI-EV1001S00	Wideband 4 ports coax TV/Radio preamplifier	2
ABI-EV1012S00	Twisted Pair wideband 4 ports TV/Radio amplifier - 2 inputs	1
ABI-EV1017S00	4-channel Audio/Video modulator with IR-Bus	5
ABI-EV1017SPK	Programming kit for the ABI-EV1017S00 VHF/UHF modulator	5
ABI-EV1018S00	Audio/Video 1 to 4 distribution amplifier (CVBS+Stereo) with IR-Bus passthrough	11
ABI-EV2012S00	Twisted Pair 4-port & Coax 3 port TV/Radio amplifier - NextGen (4Q2011)	2
ABI-FF100xS0y	RF filters with F connectors	5
ABI-HE1004Sxx	Xpert metal surface mount cabinet	35
ABI-HE1090S04	Cabinet blind plate - 4 DIN positions - pack of 4	35
ABI-HE2001Sxx	Xpress multifunctional cabinets - 35cm wide - with plexi door	34
ABI-HE2001Sxy	Xpress multifunctional cabinets - 35cm wide - with mounting board & plexi door	35
ABI-HE2005Sxx	Xplore economical cabinets - 25cm wide	34
ABI-HE2005Sxy	Xplore economical cabinets - 25cm wide - with mounting board	34
ABI-HE3001S00	19 inch 3HU mounting frame with internal DIN-rail	36
ABI-HE3002S24	19 inch 1HU empty patchpanel for 24 keystone connectors	36
ABI-HE3004S00	19 inch 1HU Ring Run Patch cord organiser	36
ABI-KP1003S00-xxx	Universal 4 pair OmniMedia cable	32
ABI-KP1003S01-xxx	Universal 4 pair OmniMedia cable in flextube	32
ABI-KS3001S15-100	Speaker cable 2x 1,5mm ² - Red/Black - 100m	45
ABI-KX1002S00-xxx	Tri-shield wideband coax cable	33
ABI-LSECO4SRO	ECO4 RO In-ceiling/wall round wetroom speaker - 4"	46
ABI-LSEMO5SSQ	EMO5 SQ In-Wall/Ceiling square speaker - 5,25" - 2way	48
ABI-LSEMO6SRO	EMO6 RO In-Wall/Ceiling round speaker - 6,5" - 2way	48
ABI-LSEVO4SOD	EVO4 OD Cabinet speaker - weatherproof - 4" - 2way	46
ABI-LSEVO5SRO	EVO5 RO In-Wall/Ceiling round speaker - 5,25" - 2way	47
ABI-LSEVO5SSQ	EVO5 SQ In-Wall/Ceiling square speaker - 5,25" - 2way	47
ABI-MM1000Cxx	Smart Music 3,5mm jack input module for TV/Music Player	43
ABI-MM1000Sxx	Smart Music - Radio & Control Module	42
ABI-MM1001S40	Smart Music - Stereo 2x20W RMS class-D DIN rail amplifier	41
ABI-MM1002S05	Smart Music - Multiroom Multisource Module - 5 zones	41
ABI-MM1004Xyz	Smart Music Wall mounting kit	43
ABI-MM1005Sxx	Smart Music - Remote Potentiometer Volume Control	43
ABI-MM1009S00	Smart Music - Audio Adapter RJ45 to 2x 3,5mm stereo jack	42
ABI-PC1001Sxx	Unshielded RJ45-RJ45 patch cord for Comm Center	37
ABI-PC1002Sxx	Shielded OmniMedia patch cord for Comm Center	37
ABI-PC1003Sxx	Coax F - F patch cord for Comm Center cabinet	37
ABI-PC1004Sxx	Unshielded RJ45 - RJ45 connection cord for phone & data	38
ABI-PC1005Sxx	Unshielded RJ45 - RJ11 connection cord	38
ABI-PC1006Sxx	IEC coax connection cord for TV, video and radio	39
ABI-PC1008S65	Shielded OmniMedia patch cord for Comm Center cabinet - IR-Bus power lead	17
ABI-PC1012Sxx	Shielded OmniMedia RJ45 - RJ45 connection cord	38
ABI-PC1013Sxx	HDMI-HDMI V1.3 connection cords	13
ABI-PC2002S01	Hybrid injection cord Data-Data (for switch ABI-EL2002S00)	7
ABI-PC2002S04	Hybrid injection cord Data-Telephone (for switch ABI-EL2002S00)	7
ABI-PC2004S00	Telephony octopus cord - 4 line splitter/combiner (4Q2011)	9
ABI-PE1002S00	Mains power switch for Comm Center	17

Index

product number		page
ABI-PS1001S11	"Green" Power supply 5VDC - 4A for Smart Media MODULES	16
ABI-PS1001SPC	Jumper cord for 5V Smart Media MODULES	16
ABI-PS1003S00	"Green" Power Supply 14VDC - 3,8A for Smart Music MODULES	44
ABI-PS1003SPC	Jumper cord for 14V Smart Music MODULES	44
ABI-PS1005S00	"Green" Power Supply 5VDC 2,5A for Smart Media ADAPTERS	16
ABI-RP1001S00	Return Path Diplexer kit for amplifiers ABI-EV1002S00 and ABI-EV1012S00	1
ABI-TA1001S00	IDC tool to mount twisted pair connectors	40
ABI-TA1002S00	Wire Cutting Pliers to mount twisted pair connectors	40
ABI-TT1003S12	RF pocket size tester for amplifiers ABI-EV1002S00 and ABI-EV1012S00	1
ABI-WA1010S00	Wall outlet faceplate & mounting ring for mosaic connectors - white	25
ABI-WA139xS00	Wall outlet blind plate - half mosaic	25
ABI-WA2001S06	Wall Outlets compatible with Keystone insert - RJ45 UTP Cat6	22
ABI-WA2006S00	Wall Outlets compatible with Keystone insert - RJ45 OmniMedia HD-Cat6	22
ABI-WA2101S06	Wall Outlet compatible Niko Pure, Intense, Original - RJ45 UTP Cat6	23
ABI-WA2106S00	Wall Outlet compatible Niko Pure, Intense, Original - RJ45 OmniMedia HD-Cat6	22
ABI-WA22x1S06	Wall Outlets compatible BTicino - RJ45 UTP Cat6	24
ABI-WA22x6S00	Wall Outlets compatible BTicino - RJ45 OmniMedia HD-Cat6	23
ABI-WA23x1S06	Wall Outlets half mosaic - RJ45 UTP Cat6	25
ABI-WA23x6S00	Wall Outlets half mosaic - RJ45 OmniMedia HD-Cat6	24
ABI-WA25x1S06	Wall outlets compatible Euromod - RJ45 UTP Cat6	26
ABI-WA25x6S00	Wall outlets compatible Euromod - RJ45 OmniMedia HD-Cat6	26

abitana nv
Brusselstraat 118-120, 1702 Groot-Bijgaarden, Belgium
Tel: +32 (0)2 412 00 60 - Fax: +32 (0)2 412 00 61
info@abitana.com - www.abitana.com