

Specifications

Printing technology		Piezoelectric inkjet
Media	Width	210 to 1,879 mm (8.3 to 74 in.)
	Thickness	Maximum 1.0 mm (39 mil) with liner, for printing
	Roll outer diameter	Maximum 210 mm (8.3 in.)
	Roll weight	Max. 40 kg (88 lb.)
	Core diameter	76.2 mm (3 in.) or 50.8 mm (2 in.)
Printing width *1		Max. 1,869 mm (73.5 in.)
Ink cartridges	Type	Roland FPG aqueous ink
	Capacity	220 cc
	Colors	Six colors (cyan, magenta, yellow, black, light cyan, and light magenta); eight colors (cyan, magenta, yellow, black, light cyan, light magenta, orange, and green); or four colors (cyan, magenta, yellow, and black)
Printing resolution		Maximum 1,440 dpi
Distance accuracy *2		Error of less than $\pm 0.3\%$ of distance traveled, or ± 0.3 mm, whichever is greater
Connectivity		Ethernet (10BASE-T/100BASE-TX, automatic switching)
Power-saving function		Automatic sleep feature
Power requirements		AC 100 to 120 V $\pm 10\%$, 2.0 A, 50/60 Hz or AC 220 to 240 V $\pm 10\%$, 0.9 A, 50/60 Hz
Power consumption	During operation	Approx. 180 W
	During standby	Approx. 44 W
Acoustic noise level	During operation	64 dB (A) or less
	During standby	40 dB (A) or less
Dimensions (with stand)		3,169 (W) x 845 (D) x 1,260 (H) mm (124.8 (W) x 33.3 (D) x 49.7 (H) in.)
Weight (with stand)		210 kg (463 lb.)
Environmental	Power on	Temperature: 15 to 32°C (59 to 90°F) (20°C [68°F] or more recommended), humidity: 35 to 80%RH (non-condensing)
	Power off	Temperature: 5 to 40°C (41 to 104°F), humidity: 20 to 80%RH (noncondensing)
Included items		Stand, power cord, media holder, replacement blade for separating knife, and user's manual, etc.

*1 The length of printing is subject to the limitations of the program.

*2 Using Roland specified media, loaded correctly, print travel of 1m, temperature: 25°C (77°F), humidity: 50%RH, excluding expansion or contraction of the media, and all correction and adjustment functions of this machine have been made properly.

Roland DG products that feature this environmental label meet the company's criteria for environmental consciousness, a set of standards based on ISO 14021 self-declaration type II. For more information, please visit www.rolanddg.com.



ISO 14001:2004 and ISO 9001:2008 Certified

Roland pursues both environmental protection and continuous quality improvement. Under the philosophy of preserving the environment and human health, Roland is actively working to abolish organic solvents in production, to reduce and recycle waste, to reduce power use, and to purchase recycled products. Roland constantly strives to provide the most highly reliable products available.



Roland reserves the right to make changes in specifications, materials or accessories without notice. Your actual output may vary. For optimum output quality, periodic maintenance to critical components may be required. Please contact your Roland dealer for details. No guarantee or warranty is implied other than expressly stated. Roland shall not be liable for any incidental or consequential damages, whether foreseeable or not, caused by defects in such products. Customers are responsible for observing related laws and ordinances if printed materials will be in direct contact with food or beverage. Adobe, PostScript, PostScript 3 and the PostScript logo are trademarks of Adobe Systems Incorporated. All other trademarks are the property of their respective owners. Roland DG Corp. has licensed the MMP technology from the TPL Group.

Roland

AUTHORIZED DEALER:

11 NOV P-X

www.rolanddg.com

Imagine.

Roland

DVE
Digital Value Engineering

HI-FI JET FH-740

Wide-Format Aqueous Inkjet Printer



Premium 6-Color Printing

The legend continues with the Hi-Fi JET FH-740

The Roland Hi-Fi JET FH-740 is simply unrivaled in the marketplace. Built with legendary Roland engineering, its sleek design offers all the durability and uncompromising print quality today's sign makers require. The Hi-Fi JET FH-740 features Roland's latest dual gold-plated printheads and advanced variable droplet technology for unsurpassed imaging and color accuracy. Choose the best configuration for your business needs: 6-color CMYKLcLm for remarkably rich, smooth graphics, or 8-color CMYKLcLm plus OrGr for spot colors.* With the FH-740, the legend continues as Roland once again takes wide-format aqueous inkjet printing to the next level.

*RIP software must also support 8 colors.



Colorful custom wallpaper brings a room to life.

Commercial indoor posters are as appealing at close range as they are at a distance.

Command attention with brilliant backlit displays

Short-term outdoor posters can be created all on one device.

The Ultimate in 6-Color Printing with Light Cyan (Lc) and Light Magenta (Lm)

The FH-740 employs dual-head architecture featuring our latest gold-plated printhead. Based on an advanced eight-channel design with 180 nozzles per channel, this state-of-the-art printhead ensures flawless printing of the finest details, while its gold-plated casing reduces the static electricity that can lead to clogging. The FH-740 also includes Roland Intelligent Pass Control® for reduced banding in between passes. The FH-740 combines 6-color CMYK, Light Cyan and Light Magenta inks with advanced variable droplet inkjet printing technology. Selecting from seven different droplet sizes, the FH-740 achieves smooth gradations and high-density output for photographic and vector images alike. With the FH-740, every detail of its performance has been fine tuned, down to the size of the droplets, to capture all the nuances within a design.



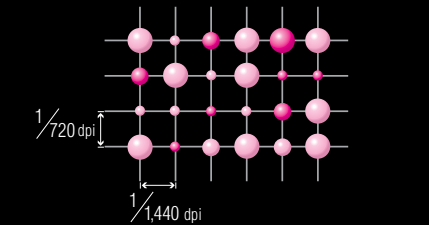
Hi-Fi JET FH-740 6-color printing



Conventional 4-color printing

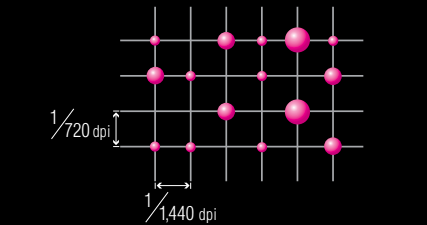


6-Color CMYKLcLm Printing with Enhanced Variable Droplet Technology



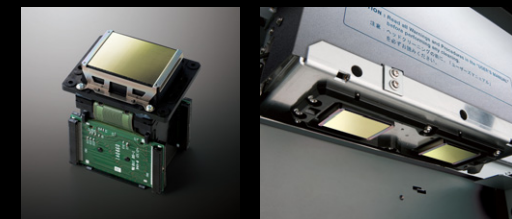
Optimizes image quality by automatically selecting from the seven different droplet sizes available.

4-Color CMYK Output with Conventional Variable Droplet Technology



Maximizes printer performance, using just three droplet sizes.

New Gold-Plated Printheads



Secure Media Handling System Built on Rigid, Durable Construction

The FH-740 offers exceptional stability through the longest production runs, thanks to durable construction and advanced media handling features. Multi-point pinch rollers and a redesigned platen ensure accurate media feeding of rolls up to 40 kg, and a belt drive moves the print carriage with precision. The FH-740 includes a high-torque, durable scan motor -- technology commonly reserved for grand-format printing devices. With the FH-740, you can print 360 x 720 dpi images (4 pass mode) at 18.0 m²/hour. High-speed 100 Base-TX/10 Base-T networks are supported.

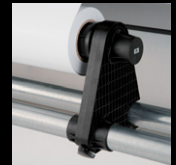


FH-740 Throughput:

540 x 360 dpi (2 pass)	26.9 m ² /h (best for cloth media)
360 x 720 dpi (3 pass)	18.0 m ² /h (best for synthetic paper)
540 x 720 dpi (4 pass)	13.8 m ² /h
720 x 720 dpi (5 pass)	9.3 m ² /h

Advanced Features and Ease of Use, All in An Eco-Friendly Print Platform

The FH-740's new media edge clamps are positioned to secure the media properly while allowing prints to be slit for removal without having to remove the clamps. The media flanges have been located close to the ground for easy loading and unloading of media. Once your media is loaded, you can simply choose the proper printer settings using the calibration test pattern. Calibration can be adjusted while printing as well, to save media and time. Register up to eight different media presets to share among operators. In addition, the FH-740 is fully compliant with ECO Label, Roland's guidelines for Environmentally-Conscious Product Design. This certification ensures that the FH-740 limits power consumption, reduces noise and electromagnetic emissions, and minimizes the use of hazardous chemical substances for a more sustainable production environment.



Legendary Roland Service and Support

At Roland, we are committed to helping you transform your imagination into reality. That is why every Roland product is backed by reliable, world-class service and support, including training through Roland workshops and seminars. We also know that innovation and creativity go hand in hand. We invite you to become inspired by visiting the Roland DG Creative Center, a gallery of exceptional works produced using innovative Roland technology.



HI-FI JET
FH-740

