

# User's Manual

# CH2

## Monitor Hood

Thank you very much for choosing an EIZO product.

Please read this User's Manual carefully to familiarize yourself with safe and effective usage procedures.

Please retain this manual for future reference.



### PRECAUTIONS

- To ensure personal safety and proper maintenance, please read this section.



### CAUTION

---

**Do not carry the monitor with attaching the hood.**

Doing so may cause the hood to drop or slip off, which may result in injury or equipment damage.

---

**Do not put any object on the hood.**

Doing so may cause the hood to drop or monitor to fall, which may result in injury or equipment damage.



---

**Do not use other screws than the specified ones.**

Doing so may cause the hood to drop, which may result in injury or equipment damage.



---

**Attach only to specified EIZO LCD monitors.**

Attach only to specified EIZO LCD monitors. Attaching to other monitors may cause the hood to drop, which may result in injury or equipment damage. For the specified monitors, please visit our website at <http://www.eizo.com>.

---

## Package Contents

---

Please contact your local dealer for assistance if any of the listed items are missing or damaged.

- Left Hood
- Right Hood
- Top Hood
- User's Manual
- Screws M3×8 4pcs
- Screws M3×16 4pcs
- Screw Caps 6 pcs (2 pcs for spare)

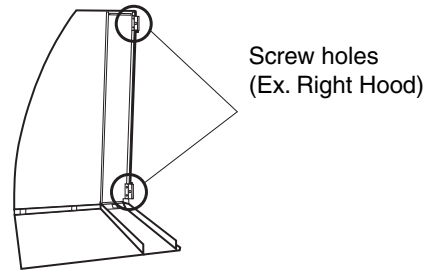


# How to install

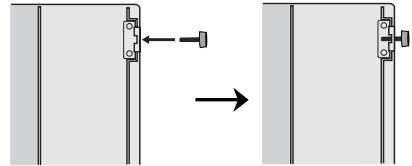
## 1. Put screws into the left and right hoods.

### NOTE

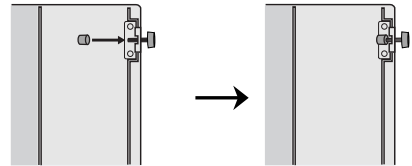
- Attach the hood by using the specified screws with referring to the labels on the packing bags of the screws.
- By over-driving the screws, the hood cannot attach into the monitor.



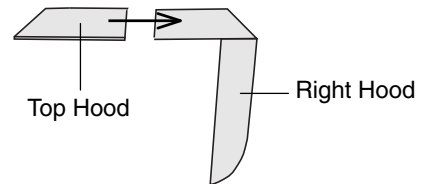
- (1) Put screws into the screw holes (2 places for each) and drive it until the half-length of screws coming up from the screw holes.



- (2) Put the screw caps on each tips of screws.



## 2. Attach the top hood to either the left or right hood before attaching to the monitor.

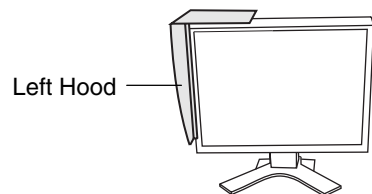


## 3. Attach the hood to the monitor.

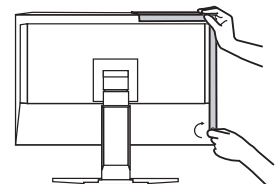
### NOTE

- Attaching one hood and tightening the screws should be completed before going on to the other hood.

- (1) Attach the left hood to the monitor from above and slide it from the side of the monitor until the hood is firmly positioned against the monitor.

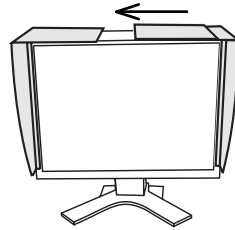


- (2) Hold the left hood and tighten two screws on each side.



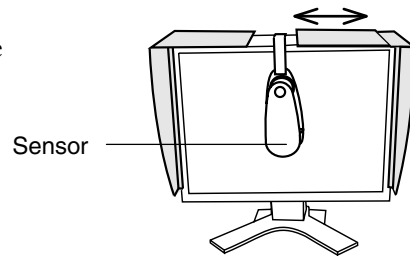
- (3) Attach the right hood in the same way.

4. Slide the top hood to close.



## Calibration

When calibrating the monitor, the sensor of the measurement device can be attached by sliding the top cover without removing the hood.

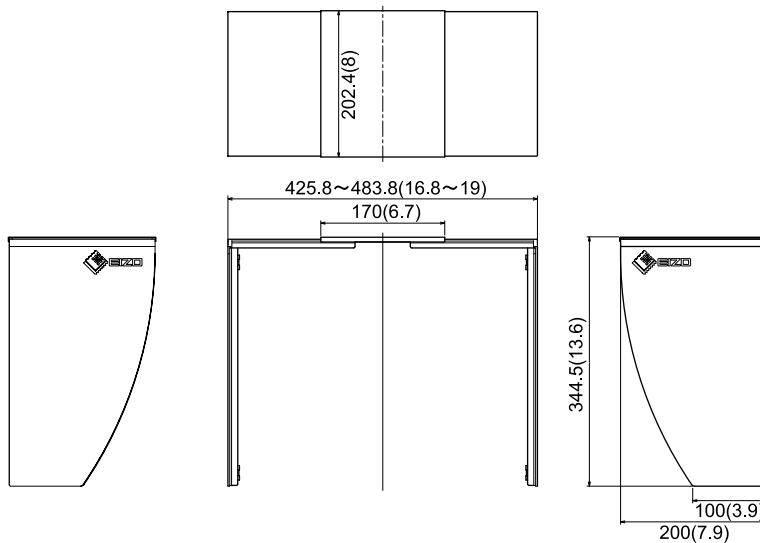


## Specifications

Dimensions(W) × (H) × (D) (Not including projected part)	425.8 (16.8) ~ 483.8 (19) × 344.5 (13.6) × 202.4 (8) mm (inch)
Weight	860g (1.9lbs)

## Dimensions

Unit: mm (inch)



# NOTE