

**Blue Eye VGA Water Block
GH-WPBV1**

Rev. 1001
060428

Table of Contents

Caution.....	3
Product Appearance Introduction.....	4
Product Specifications.....	4
Feature Summary	4
Component List.....	5
I. Hardware Installation	6
1-1 VGA Fan Disassembly.....	6
1-2 Hold-Down Plates Introduction	6
1-3 Hold-Down Plates Installation.....	7
1-4 Water Block and VGA Card Installation.....	8
II. Water Tube Installation	9
2-1 Water Tube Installation for Single VGA Card	9
2-2 Water Tube Installation for Dual VGA Card	10
III. Overview of Installed Water Block	11



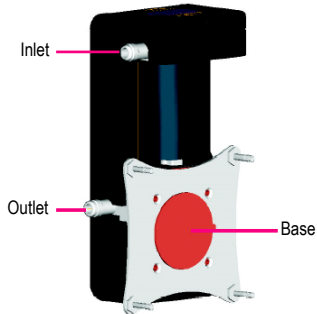
Caution

1. Before refilling the tank with coolant for testing the Liquid cooling system, please make sure again that all water tube joints are securely fitted and the clips are correctively positioned.
2. While removing water tubes for uninstallation, be sure to keep the device for removal of these tubes away from any electronic part.

The following are not covered by the warranty:

1. Use the product incorrectly or in a manner other than the designed purpose.
2. Nonobservance of the proper operation provided. (e.g. over-clocking)
3. Malfunction due to interference from other devices.
4. Unapproved modification of the product.
5. Consequential damage to other objects due to the product's fault.
6. Malfunction arising from casualties (earthquake, thunder, fire, and flood).
7. The product's warranty label has been removed or damaged.
8. The devices inside, including power supply, hard disk, CD-ROM drive, motherboard, ventilator, etc, are not detached from the casing prior to the transportation of the computer product, resulting in damage to the casing or computer-related devices.
9. Any lose due caused by failure to follow the installation process contained in the user.
10. Any damage to the system arising from leakage of coolant due to improper installation is not covered by the warranty.
11. Use only Gigabyte Liquid Coolant. Any damage arising from the use of liquids other than Gigabyte Liquid Coolant is not covered by the warranty.

Product Appearance Introduction



CAUTION

Please make sure that the protective film is removed before use. Before the installation, please power down the computer and unplug the power cord.



NOTE

Please refer to the English version for all pictures.

Product Specifications

Product Serial Number:	Blue Eye VGA Water Block
Model:	GH-WPBV1
Dimensions:	113 x 61.5 x 40.5 mm
Materials:	Cooper, PC Cover
Flow Meter:	Yes (UV Reaction)
ATi CrossFire Supported:	Yes
nVidia SLi Supported:	Yes
GPU Compatibility:	Please refer to Page 6; 1-2 Hold-Down Plates Introduction

Feature Summary

1. Support nVIDIA Sli and ATi CrossFire – Dual VGA Adaptors.
2. Blue LED with UV inductive current meter to display current status directly.
3. Support the performance required by high-end VGAs.
4. Large water block with pure cooper base (specially water routing designed)
5. All-purpose design, supporting most of water-cooling systems on the market. (1/4", 3/8", and 1/2" tubing)
6. Skid-proof and easy-to-install tube clamps
7. Hair-lined finished aluminum plate

Component List



GH-WPBV1 VGA Water Block



(1) 1/4" tube x 1



(2) RAM
heatsinks x 16



(3) 1/2" tube
clamps x 4



(4) 3/8" tube
clamps x 4



(5) 1/4" tube
clamps x 10



(6) 1/2" tube
splitters x 2



(7) 3/8" tube
splitters x 2



(8) 1/4" tube
splitters x 2



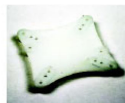
(9) Screws x 4



(10) Spring loaded
screws x 4



(11) Hold-down
plates



(12) Base plate



(13) Washers x 4



(14) Wrench



(15) Grease



(16) User manual

I. Hardware Installation

1-1 VGA Fan Disassembly

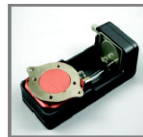
Please disassemble the fan on the VGA Card on your own.

1-2 Hold-Down Plates Introduction

There are three combinations for the hold-down plate installations.



Type A
(Factory Default)



Type B

Type A supports the following VGA Cards.

PCIE		AGP	
nVIDIA	ATI	nVIDIA	ATI
7900	X1900	6800	
7800	X1800		
6800			

Type B supports the following VGA Cards.

PCIE		AGP	
nVIDIA	ATI	nVIDIA	ATI
7300	X850		1600
6200	X700		X800
5750	X600		X700
			9800
			9600



Type C

Type C supports the following VGA Cards.

PCIE		AGP	
nVIDIA	ATI	nVIDIA	ATI
7600	1600	/	1300
6600	1300	/	/
6200	/	/	/

1-3 Hold-Down Plates Installation

Please decide the type (Type A, Type B, or Type C) of hold-down plate for your VGA Card, depending on the position of the mounting holes.

Take Type B for example. As shown in Fig. a, place the disc hold-down plate with the engraved Gigabyte logo facing up, so that the mounting holes on the disc hold-down plate match with the mounting holes on the base plate, and secure it with a fastener (as shown in Fig. a).

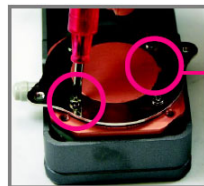


Fig. a

Mounting holes on the base plate

Secure the disc hold-down plate by tightening the screws (Component 9) with the wrench (Component 14) as shown in Fig. b.

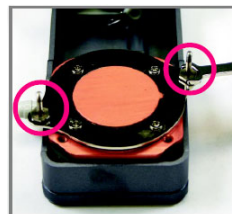
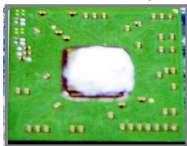


Fig. b

1-4 Water Block and VGA Card Installation

Apply the grease on the VGA chipset as shown in Fig. c.



Insert the screws on the water block into the mounting holes as shown in Fig. d.



As shown in Fig. e, determine the position of the base plate (Component 12) so that its mounting holes line up with the mounting holes on the VGA radiator. Place the washers (Component 13) on the lined up mounting holes, as shown in Fig. e.



Washer

Fig. e

Place the base plate (Component 12) in the desired position as shown in Fig. f.



Fig. f

Bolt the base plate using the supplied spring loaded screws (Component 10) as shown in Fig. g.

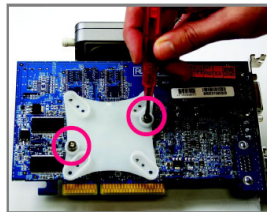


Fig. g



To avoid damage on the chipset, due to over pressure while securing the spring loaded screws, please fasten the screws diagonally.

II. Water Tube Installation

2-1 Water Tube Installation for Single VGA Card

Please follow the procedures shown on the diagram on the left to proceed with the installation for single VGA card. The water-cooling system used in the example is Gigabyte 3D Galaxy.

Procedure 1:

Cut the supplied water tube connected to the radiator and CPU water block and the supplied water tube connected to the CPU water block and pump.

Procedure 2:

Connect cut ends with the supplied 1/2" splitters (Component 8) and secure firmly with the supplied 1/2" tube clamps (Component 5).

Procedure 3:

Connect the supplied 1/4" water tubes (Component 1) to the supplied 1/2" splitters (Component 8) and the other ends to the VGA water block inlet and outlet. Make sure all the tube clamps are secured firmly.

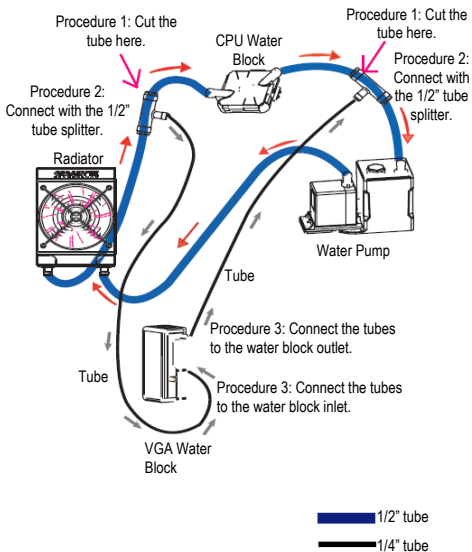


Procedure 4:
To connect the 4-pin connector of the LED power line to the power line of the power supply.

Procedure 5: Installation completed.



If the CPU water-cooling systems from other brands are used, please follow the size regulation for the water tubes for installation.



Before filling the coolant, please make sure that all the tube clamps are secured firmly.

2-2 Water Tube Installation for Dual VGA Card

Procedure 1 and 2:

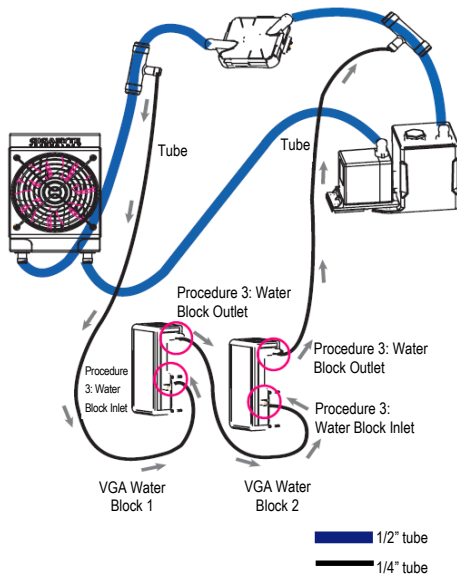
Same as in the water tube installation for single VGA card.

Procedure 3:

Connect one end of the supplied 1/4" water tube (Component 1) to the supplied 1/2" splitter (Component 8) and the other end to the VGA water block 1 inlet. Connect the VGA water block 1 outlet and the VGA water block 2 inlet with another supplied 1/4" water tube (Component 1). Finally connect one end of the other supplied 1/4" water tube (Component 1) to the VGA water block 2 outlet and the other end to the supplied 1/2" splitter (Component 8). Make sure all the tube clamps are secured firmly.

Procedure 4: Installation of single graphic card

Procedure 5: Installation Completed



If the CPU water-cooling systems from other brands are used, please follow the size regulation for the water tubes for installation.



Before filling the coolant, please make sure that all the tube clamps are secured firmly.

III. Overview of Installed Water Block

Please make sure the VGA water block 1 is installed on top of the VGA water block 2.

