

CBP3212

Mini Dome Camera

USER MANUAL



CAUTION

1. This installation should be made by a qualified service person and should abide to all local codes.
2. Avoid installation on a surface subjected to frequent vibration or shocks.
3. Do not operate the camera beyond its temperature range or power source ratings.
4. Should any damage or suspected damage occur, shutdown the power source, unplug and contact your service provider.
5. Do not install the camera under unstable lighting conditions. Severe lighting change or flicker can cause the camera to work improperly.
6. Never use the camera close to a gas or oil leak.
7. Do not disassemble the camera.
8. Never keep the camera face to strong light directly, this can damage the CCD.
9. Ensure all removable covers are replaced to protect the inner components.
10. Do not install near devices which emit a strong electro-magnetic field.
11. Use a dry or damp cloth only for cleaning.
12. Do not drop the camera or subject the unit to physical shocks.

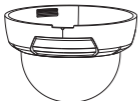
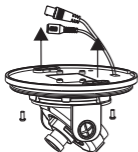
PLEASE FOLLOW THE ABOVE CAUTIONS – FAILURE TO DO SO MAY INVALIDATE THE WARRANTY OR CAUSE SERIOUS INJURY.

Remark: Changes or modifications not expressly approved by the manufacturer can cause the camera to be damaged and become inoperable. This may invalidate the user warranty.

FIXING TO A WALL



Ceiling



Important: Ensure all cautionary procedures are observed during installation.

It is recommended the camera is tested during the most demanding environmental conditions such as low light or bright sunlight to ensure continuity of effective CCTV monitoring.

- Remove the camera unit carefully from the box reserving the accessory contents in a safe place
- Use the supplied mounting template to mark the space for drilling
- Remove the dome cover using a suitable coin or screwdriver
- Using the supplied fitting screws, securely attach the camera to the drilled surface
- Adjust the tri-axis gimbal to give the required image of the area to be monitored.
- Replace the dome cover by pushing firmly in place onto the base
- Carefully clean the dome surface with a soft lint free cloth

PACKING CONTENTS



Wall Plugs

X2



Fitting Screws

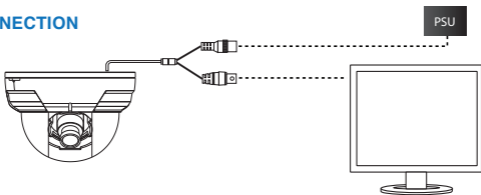
X2



Mounting Template

X1

CONNECTION

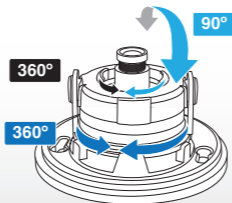


- Connect the video out port to your video cable running to the monitor / recorder
- Check the power supply is of the correct level and connect your power supply into the power port on the Camera.
- View the picture on a monitoring device to check the power and video connection is working properly.

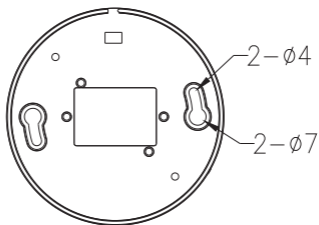
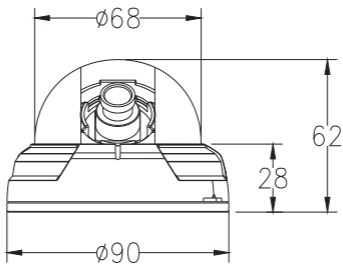
Troubleshooting

- Ensure all power and cable connections are correct with the Camera and DVR.
- If all power and cable connections are correct and the camera picture can not be produced then contact your supplier for technical support.

Tri-Axis Gimbal



DIMENSIONS



SPECIFICATION

MODEL	CBP3212
Image Sensor	Sony Super HAD
Effective Pixels	PAL: 500(H) x 582(V) ; NTSC: 510(H) x 494(V)
Horizontal Resolution	480TVL
Min. Illumination	0.3Lux/F1.2
Lens	Fixed Lens f=3.6mm
Day & Night	Colour Only
S/N Ratio	more than 48dB
White Balance	AUTO
AGC	AUTO
BLC	AUTO
Sync System	Internal
BNC Video Output	CVBS 1.0Vp-p / 75Ω
Input Voltage	12v DC
Power Consumption	120mA
Operating Temperature	-10°C~ +50°C RH90% MAX
Dimension	90mm (dia.) x 62mm
Weight	150G

Design and specification are subject to change without notice.

CONCEPT PRO DOME CAMERA RANGE

INTERNAL DOME CAMERAS

CBP3212	480TVL, 0.3 Lux, 3.6mm Lens, 90(ø)x62mm
CBP5112	420TVL, 0.3 Lux, 3.6mm Lens, 128(ø)x93mm
CBP5212	480TVL, 0.3 Lux, 3.6mm Lens, 128(ø)x93mm
CBP4304	420TVL, 0.3 Lux, 4mm Lens, 148(ø)x106mm
CBP5314	650TVL, 0.03Lux, 4mm Lens, 148(ø)x106mm
CBP4324	420TVL, 0.3 Lux, 4-9mm Lens, 148(ø)x106mm
CBP6324	650TVL, 0.03Lux 2.8-10mm Lens, 148(ø)x106mm
CBP6324-B	650TVL, 0.03 Lux, 2.8-10mm Lens, 148(ø)x106mm, Black casing
CBP6324DN	650TVL, 0.03 Lux, 2.8-10mm, Day Night, 148(ø)x106mm
CBP6324WDR	690TVL, 0.01 Lux, 2.8-10mm Lens, Day Night, Wide Dynamic Range, 148(ø)x106mm

VANDAL RESISTANT DOME CAMERAS

CVP9304	420TVL, 0.3 Lux, 4mm Lens, 148.35(ø)x105mm
CVP9314	650TVL, 0.03Lux, 4mm Lens, 148.35(ø)x105mm
CVP9324	650TVL, 0.03Lux 2.8-10mm Lens, 148.35(ø)x105mm
CVP9324DN	650TVL, 0.03 Lux, 2.8-10mm, Day Night, 148.35(ø)x105mm
CVP9324LL	600TVL, 0.0002 Lux (DSS/Sens Up on) 2.8-10mm Lens, 148.35(ø)x105mm
CVP9324WDR	690TVL, 0.01 Lux, 2.8-10mm Lens, Day Night, Wide Dynamic Range, 148.35(ø)x105mm

INFRARED DOME RANGE

CBP6314DNIR	600TVL, 4mm Lens, IR LED, 148(ø)x106mm
CBP6324DNIR	650TVL, 2.8-10mm Lens, IR LED, ICR, 148(ø)x106mm
CVP9314DNIR	600TVL, 4mm Lens, IR LED, 148.35(ø)x105mm
CVP9324DNIR	650TVL, 2.8-10mm Lens, IR LED, ICR, 148.35(ø)x105mm

VANDAL RESISTANT WALL BRACKET

CVP-BRK	Wall bracket for use with all CVP dome cameras
----------------	--

Concept Pro

