



kitchen think

Instructions for Installation and Use

Fridge / Freezer
Model FFA45W
Model FFA47X

To the Installer

Before installation fill in the product details on the back cover of this book.
The information can be found on the rating plate.

To the User

You must read the instructions prior to installing and using the appliance and
then retain them for future reference.

CONTENTS

| | |
|---|------------|
| Product Safety | 3 |
| Installation | 3 |
| Electrical Connection | 4 |
| Get to Know your Appliance | 5 |
| The Display | 6 |
| Getting your Appliance ready for use | 7 |
| How to use The Display | 7 |
| How to use the Refrigerator Compartment | 9 |
| How to use the Freezer Compartment | 10-11 |
| Food Storage | 12-13 |
| Energy Saving Tips | 14 |
| Buzzer and Visual Warnings | 14 |
| Caring for your Appliance | 15 |
| Troubleshooting | 16 |
| Notes | 17 |
| After Sales Service | 18 |
| Hotpoint Guarantee | 19 |
| Key Contacts | Back Cover |

Retention of this Instruction Book

This Instruction Book must be kept handy for reference as it contains important details on the safe and proper use of the appliance.

If you sell or pass the appliance to someone else, or move house and leave it behind, make sure this Book is also provided so the new owner can become familiar with the appliance and safety warnings.

If the Book is lost or damaged a copy may be obtained from:
Merloni Elettrodomestici UK Ltd. Morley Way, Peterborough, PE2 9JB

PRODUCT SAFETY

ATTENTION

Read your manual carefully since it contains instructions which will ensure safe installation, use and maintenance of your appliance.

Your Refrigerator is built to International safety standards (EN60) and has been awarded the European approval mark (IMQ) for compliance with UK electrical safety requirements. It also meets the EC standards on the prevention and elimination of radio interference (EC directive 87/308 - 02.06.89).

1. This appliance must not be installed outdoors - not even in an area protected by a roof. It is extremely dangerous to leave it exposed to rain or storms.
2. It must only be used by adults and exclusively to refrigerate and freeze foodstuffs, following the instructions for use contained in this manual.
3. Do not ever touch or handle the appliance with bare feet or with wet hands or feet.
4. It is highly recommended that you do not use extension cords or multiple socket adapters. If the refrigerator is installed between cabinets, make sure that the cord is not bent or dangerously pinched or compressed.
5. Never pull on the cord or the refrigerator to remove the plug from the wall socket - this is very dangerous.
6. Never touch the cooling components within the appliance, especially with wet hands because this could result in injury. Never put ice cubes just removed from the freezer into your

mouth because they could stick to your mouth and cause burns.

7. Never perform any cleaning or maintenance operations without first unplugging the appliance; in fact, pressing the ON/OFF button on the display for more than two seconds is not enough to cut off all electrical contacts.

8. Before having your old refrigerator picked up for disposal, remove or make inoperable any locking devices to prevent children who might play in or around the appliance from being locked inside.

9. Before calling for service/assistance in the case of malfunction, consult the chapter entitled "Is There a Problem?" to determine whether it is possible to eliminate the problem. Do not try to repair the problem by trying to access the internal components of the appliance.

10. If damaged, the power supply cord on this appliance must necessarily be replaced by our service centre because special tools are required for replacement.

11. Do not use electric appliances inside the compartment for food storage, if these are not those recommended by the manufacturer.

12. At the end of the functional life of your appliance – containing cyclopentane gas in the insulation foam and perhaps gas R600a (isobutane) in the refrigeration circuit – the latter should be made safe before being sent to the dump.

For this operation, please contact your dealer or the Local Organisation in charge of waste disposal.

INSTALLATION

Proper installation of the appliance is essential to ensure the best and most efficient performance of your appliance.

Ventilation

The compressor and condenser generate heat and, therefore, need to be ventilated properly. Rooms with less than perfect ventilation are not very suited for installation of the appliance. Therefore, it should be installed in a room with an opening (window or French window) that provide the appropriate amount of air re-circulation. It is also important that the room not be too humid.

During installation, make sure not to cover or obstruct the grates that allow for proper ventilation of the appliance.

For proper ventilation of the appliance, you must leave:

- a space of at least 10 cm between the top part and any cabinets above it;
- a space of at least 5 cm between the sides of the appliance and any adjacent cabinets/walls.

Away from Heat

Avoid positioning the appliance in a place where it is directly exposed to sunlight or near an oven, cook top or the like.

Levelling

The floor should be perfectly level; if not, you can adjust the feet at the front of the appliance.

Earthing

Before making the electrical connection, check that the voltage shown on the data plate, that you will find on the bottom left hand side of the appliance next to the crisper, corresponds to that of your home and that the socket is earthed in compliance with all current electrical regulations. If the system is not earthed, the manufacturer declines all liability for consequent damages or losses. Do not use adapters or multiple sockets.

Position the appliance in such a way that you can access the socket where it is plugged in.

Check the power load

The electrical socket must support the maximum power load of the appliance shown on the data plate (on the bottom left hand side of the appliance next to the crisper).

Before plugging the appliance to the mains

Stand the appliance upright and wait at least 3 hours before plugging the appliance into the mains to ensure proper performance.

ELECTRICAL CONNECTION

Your appliance is supplied with a 13amp fused plug that can be plugged into a 13amp socket for immediate use. Before using the appliance please read the instructions below.

WARNING:
THIS APPLIANCE MUST BE EARTHED.

Replacing fuse covers:

When replacing a faulty fuse, a 13amp ASTA approved fuse to BS 1362 should always be used and the fuse cover re-fitted.

If the fuse cover is lost, the plug must not be used until a replacement is obtained.

Replacement fuse covers:

If a replacement fuse cover is fitted, it must be of the correct colour as indicated by the coloured marking or the colour that is embossed in words on the base of the plug.

Changing the plug:

Removing the plug

If your appliance has a non-rewireable moulded plug and you should wish to remove it to add a longer cable or to re-route the mains cable through partitions, units etc. please ensure that either:

- The plug is replaced by a fused 13amp re-wireable plug bearing the BSI mark of approval.

or

- The mains cable is wired directly into a 13amp cable outlet, controlled by a switch (in compliance with BS 5733) which is accessible without moving the appliance.

Disposing of the plug

Cut off and dispose of the supplied plug if it does not fit your socket. The cable should be cut as close as possible to the moulded plug.

Remove the fuse.

WARNING:
To avoid a shock hazard do not insert the discarded plug into a socket anywhere else.


Fitting a new plug

IMPORTANT:

WIRES IN THE MAINS LEAD ARE COLOURED IN ACCORDANCE WITH THE FOLLOWING CODE...

Green and Yellow - Earth
Blue - Neutral
Brown - Live

As the colours of the wires in the mains lead may not correspond with the coloured markings identifying the terminals in your plug, proceed as follows:

- Connect Green and Yellow wire to terminal marked 'E' or  or coloured Green and Yellow.
- Connect Brown wire to terminal marked 'L' or coloured red or brown.
- Connect Blue wire to terminal marked 'N' or coloured Black or Blue.

If a 13amp plug (BS 1363) is used it must be fitted with a 13amp fuse. A 15amp plug must be protected by a 15amp fuse, either in the plug or adaptor or at the distribution board.

If you are in any doubt about the electrical supply to your machine, consult a qualified electrician before use.

CE Marking certifies that this appliance conforms to the following EEC directives :
Low Voltage Equipment - 73/23/EEC & 93/68 EEC
Electromagnetic Compatibility 89/336/EEC, 92/31/EEC & 93/68/EEC

GET TO KNOW YOUR APPLIANCE

A Removable lidded shelf, with egg tray and butter dish

L Removable height-adjustable shelves

B Butter dish

M Light

C Beverage can shelves

D Intermediate shelves

E Removable door shelf for bottles

F Ice tray

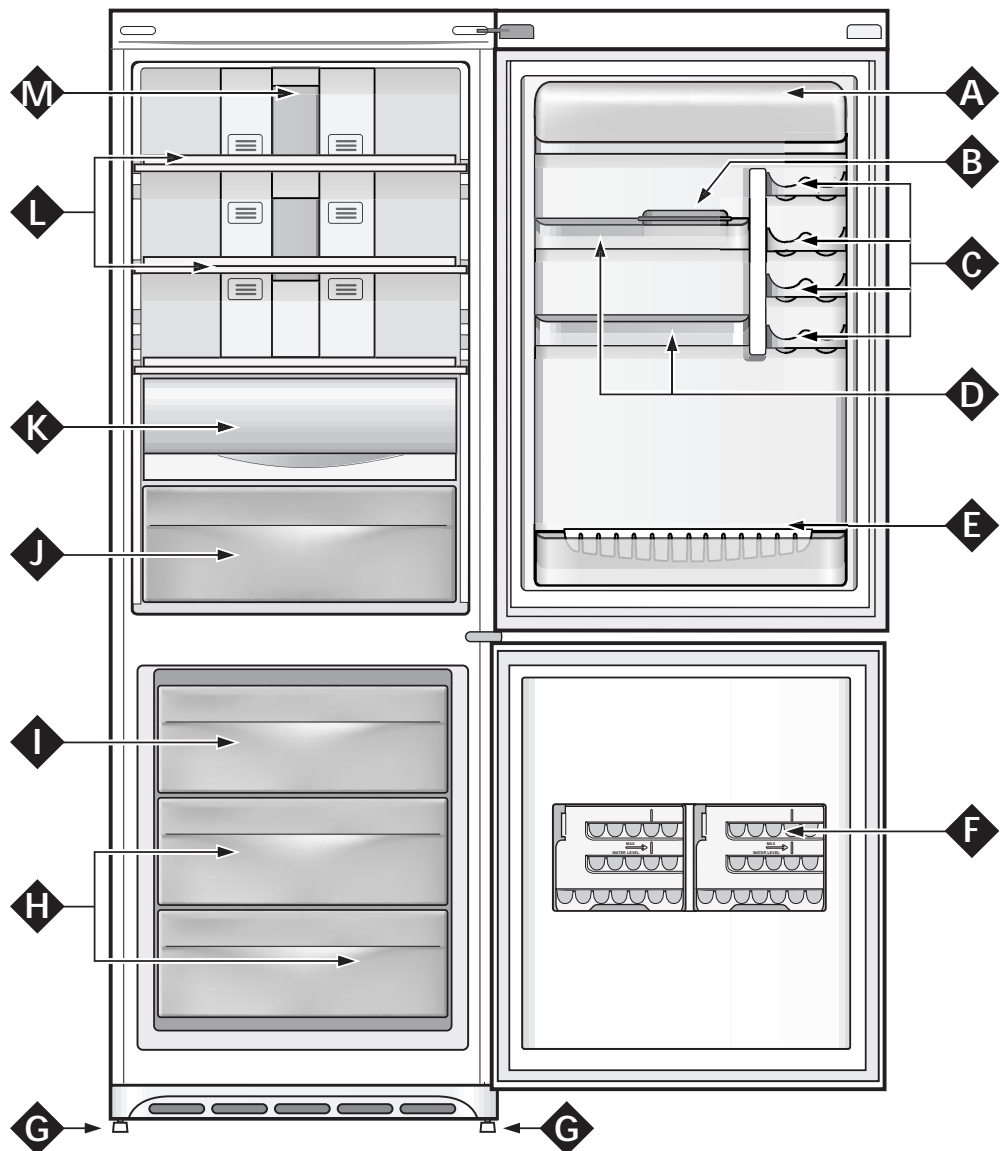
G Levelling feet

H Food storage compartments

I Compartments for freezing and food storage

J Fruit and Vegetable Crisper

K "Fresh box" compartment for meat and fish



THE DISPLAY

A ON/OFF button

This button turns the entire appliance on or off (refrigerator and freezer compartments) (press it for more than two seconds).

B ECO button

The button enables and disables the ECOseconds function

C RESET ALARM button

This button turns the alarm buzzer off, as well as cancelling scrolling text alarm messages from the display (simply press it).

D MODE button

This button allows you to act on the display to have access to the various settings/functions and, subsequently, to select the same.

E ADJUST/SELECT + button

This button allows you to adjust the settable values (temperature, date, time and language) or to select the various functions.

F ADJUST/SELECT - button

This button allows you to adjust the settable values (temperature, date, time and language) or to deselect the various functions.

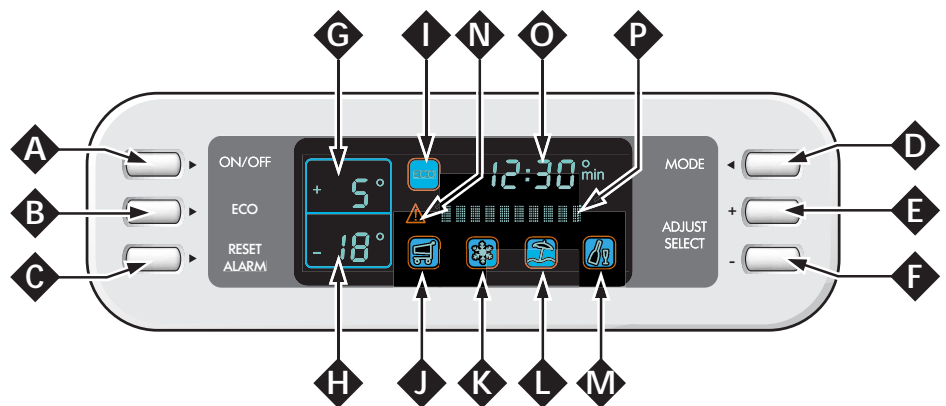
G Display: refrigerator compartment indication

Displays the temperature set in the refrigerator compartment (fixed figure), the temperature you are setting (flashing figure) or the OFF condition of the appliance



H Display: freezer compartment indication

Displays the temperature set in the freezer compartment (fixed figure), the temperature you are setting (flashing figure) or the OFF condition of the appliance (OFF enabled).



I Display: ECO function



Displays the condition (disabled, selected or enabled) of the ECO function (optimal temperature at low consumption levels).

J Display: SUPER COOL function



Displays the condition (disabled, selected or enabled) of the SUPER COOL function (rapid cooling of the refrigerator compartment).

K Display: SUPER FREEZE function



Displays the condition (disabled, selected or enabled) of the SUPER FREEZE function (rapid freezing).

L Display: HOLIDAY function



Displays the condition (disabled, selected or enabled) of the HOLIDAY function (optimal temperatures in the event of long-term absences without having to turn the appliance off).

M Display: ICE PARTY function



Displays the condition (disabled, selected or enabled) of the ICE PARTY function (maximum speed in cooling a hot bottle and serving it at the table in the special bucket designed to maintain the temperature reached by the bottle).

N Display: alarm indicator



If enabled, it indicates the presence of a critical situation (door open, high temperature, etc...).

O Display: time indicator

Indicates the correct time and is used to set the date (month, day and year).

P Display: scrolling text

Used to set the language, it also provides general information as to the condition of the appliance and on how to interact with the display.

GETTING YOUR APPLIANCE READY FOR USE

NOTICE

After the appliance has been delivered, stand it in the upright position and wait approximately 3 hours before connecting it to the electrical outlet to guarantee that it operates properly.

Before placing foodstuffs in the refrigerator or freezer, clean the interior well with warm water and baking soda.

Motor protection delay

This model is provided with a motor protection control system. Therefore, if the compressor does not start immediately upon installation, do not worry as it will start automatically after approximately 8 minutes.

This is also what will happen every time the power supply is interrupted, both due to a power failure or should you switch it off yourself (to clean or defrost your freezer, for example).

After plugging the appliance into a suitable electricity socket, ensure the display is on with the "OFF" words in

the indication spaces concerning the two compartments (fridge and freezer).

Freezer compartment

When the appliance is switched on (by pressing the **ON/OFF** button "A" for more than two seconds), the freezer compartment is automatically brought to the standard setting of **-18°C**. We recommend you enable the **SUPER FREEZE** function to speed up the cooling process of the compartment; when the latter has reached its optimal temperature, the function shall be automatically disabled and you may place your frozen food inside the compartment.

Refrigerator compartment

When the appliance is switched on, the refrigerator compartment is brought to the standard setting of **+5°C**. We recommend you enable the **SUPER COOL** function to speed up the cooling process of the compartment: after a few hours, you may place food inside the refrigerator.

HOW TO USE THE DISPLAY

Firstly, take all the advice that appears in the form of scrolling text on the display: it will be of use to you, especially when you make your first settings.

Temperature settings:

If the appliance is switched off, the temperatures set at that time will appear in the indication spaces on the display concerning the refrigeration and freezer compartments (**G** for the refrigerator and **H** for the freezer). To change these, press the **MODE (D)** button as many times as necessary for the figure corresponding to the temperature set to flash in the relative indication space. Now you can select the new temperature to set by pressing the **ADJUST/SELECT + (E)** (to increase the temperature displayed by one degree) and/or **ADJUST/SELECT - (F)** (to decrease the temperature displayed by one degree) buttons. Once you have reached the desired temperature, you should set it by pressing the **MODE (D)** button again to confirm the selection. Now the new temperature will stop flashing and will remain fixed in the relevant indication space on the display to indicate that the new setting has been made. NOTE: if you do not confirm your selection by pressing the **MODE** button within ten seconds of the last action performed on the display, the latter shall go back to displaying the temperature previously in being and indicate that no new temperature has been set.

The temperatures set automatically are **+5°C** for the refrigerator compartment and **-18°C** for the freezer compartment and these are the standard temperatures for food storage.

The settable temperatures for the refrigerator compartment range from **+2°C** to **+8°C**, whereas those for the freezer compartment range from **-18°C** to **-26°C**. When the ECO function is enabled, the possible settings are instead closer

to the standard ones for food storage: from **+4°C** to **+6°C** for the refrigerator compartment and from **-18°C** to **-20°C** for the freezer compartment. The possible increases and decrease are still of 1°C.

When the **HOLIDAY** function is enabled, temperature regulations cannot be made, but the appliance automatically sets itself to the best setting for the situation: **+12°C** for the refrigerator compartment and **-18°C** for the freezer compartment.

How to use the functions:



Function symbol in normal operating conditions (only green symbol lit)



Function selected (green symbol and red outline lit)



Function enabled (green symbol and blue background lit)

To enable and disable the ECO function, just press the **ECO** button (**B**).

Press the **MODE (D)** button as many times as necessary for the red outline of the function you wish to act on to light up: this indicates that the function has been selected and is ready to be enabled or disabled.

Now you can act on the function using the **ADJUST/SELECT + (E)** (to enable it) and/or **ADJUST/SELECT - (F)** (to disable it) buttons. To confirm the setting chosen for the function, press the **MODE (D)** button again. The red outline will come off to indicate the conclusion of operations on this function: if the function has been enabled, not only the green symbol lights up, but also the blue background, whereas if it has been disabled, the blue background will also come off and only the green symbol will stay lit.

NOTE: if you do not confirm your selection by pressing the **MODE** button within ten seconds of the last action performed on the display, the latter shall go back to displaying the function previously set and indicate that no new modification has been made.

Some functions (**SUPER COOL** and **HOLIDAY**) are linked to the refrigerator compartment; other functions foresee an operation that can create conflicts (for example **HOLIDAY** and **SUPER FREEZE**), in this case a pre-set priority is taken into consideration in order to help you run the appliance.

Language setting:

The language setting is the first operation that is suggested (via the scrolling text on the display) the first time you turn the appliance on.

You can choose from six different languages (Italian, French, English, Spanish, Portuguese, and Turkish): the display will provide all the indications in the chosen language; should you fail to select one, the appliance is factory-set to Italian. If this is not the first time you turn the appliance on, first press the **MODE (D)** button as many times as necessary for the scrolling text "**IMPOSTAZIONE LINGUA [+/-] / CHOIX LANGUE [+/-] / SET LANGUAGE [+/-] / SELECCIONAR IDIOMA [+/-] / PROGRAMAÇÃO LÍNGUA [+/-]**" to come up on the display; if it is the first time you turn the appliance on, then this is not necessary.

Now you can choose the language using the **ADJUST/SELECT + (E)** (scrolls forward in the list of languages available that appear in the form of scrolling text) and/or **ADJUST/SELECT - (F)** (scrolls back in the list of languages available that appear in the form of scrolling text) buttons. Once the language you wish to select has appeared in the scrolling text, confirm the setting by pressing the **MODE (D)** button again: the language is now enabled.

NOTE: if you do not confirm your selection by pressing the **MODE** button within ten seconds of the last action performed on the display, the latter shall go back to displaying the language previously set and indicate that no modification has been made.

Setting the time and date:

The time and date settings are in rapid sequence and you cannot intervene on the date without first setting the time. Press the **MODE (D)** button as many times as necessary for the words "**SET TIME [+/-]**" appears in the form of scrolling text.

Now you can set the exact time using the **ADJUST/SELECT + (E)** (to go up one hour) and/or **ADJUST/SELECT - (F)** (to go back one hour) buttons. Once you have reached the time to set, confirm the setting by pressing the **MODE (D)** button once more: you should now set the minutes using the same procedure.

Once you have set the correct time, you should set the day and then the month and year, using the same procedure: buttons **ADJUST/SELECT + (E)** and **ADJUST/SELECT - (F)** for the exact digit and again the **MODE** button to confirm. NOTE: if you do not confirm your selection by pressing the **MODE** button within ten seconds of the last action performed on the display, the latter shall go back to displaying the setting previously made and indicate that no modification has been made.

HOW TO USE THE REFRIGERATOR COMPARTMENT...

The temperature inside the refrigerator is automatically adjusted according to the setting made on the display. We recommend, however, a medium position.

When the fridge compartment is filled up after a heavy shopping spree, use the **SUPER COOL "J"** function (see the paragraph on "How to use the display") in order to reach optimum operating conditions quickly. Once the necessary time has elapsed, the function is disabled automatically.

Remember to follow our instructions on the storage life of foods: If not stored correctly, even the freshest food will deteriorate quite quickly.

Contrary to popular belief, cooked foods do not keep longer than fresh food.

The refrigerator compartment of your appliance is fitted with practical removable shelves (Fig. 1) whose height can be adjusted to allow storage of large containers. This allows you to place even large containers and foodstuffs in the refrigerator.

Remember to cool hot food before storing otherwise the temperature inside the appliance will increase, causing the compressor to work harder and use more energy.

Do not store liquids in unsealed containers since this will increase the humidity and lead to the formation of frost in the refrigerator.

To use the cold cuts/cheese box, unhook it and remove it from the shelf. To optimise space according to your needs, the same can be moved laterally (Fig. 2).

The can rack (Fig. 3) on the inner door allows you to store not only cans, but also yoghurt, butter and other containers, according to your requirements.

WARNING: to avoid blocking the air circulation inside the refrigerator, it is advisable not to obstruct the ventilation holes with food or containers.



Fig. 1

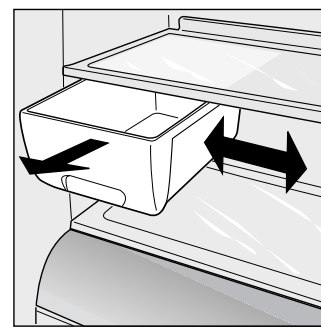


Fig. 2

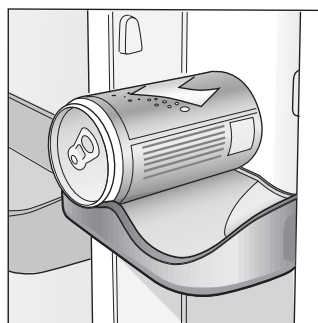


Fig. 3

Using the "Fresh box" compartment for meat and fish

This compartment was designed to allow for longer preservation times for fresh meat and fish (for as long as a week).

This is possible as the coldest temperature of the entire fridge is available inside this specific compartment.

The clear protective door to open the compartment avoids any oxidation or blackening to occur, which are typical of meat and fish when exposed to air.

Moreover, the "Fresh box" compartment can also be used to cool dishes that are normally eaten "cold", such as melon and Parma ham, figs and ham, mozzarella and tomatoes.

HOW TO USE THE FREEZER COMPARTMENT...

For the preparation of food to be frozen, please consult a specialized manual.

Food that has been thawed, even partially, must not be refrozen: you must cook it in order to consume it (within 24 hours) or to freeze it once again.

When freezing fresh foods, remember that they should not touch other previously frozen or deep frozen foods. Place the food that you wish to freeze in the top compartment "I" where the temperature will fall below -18°C , which is ideal for freezing food properly. Remember that proper conservation depends on the speed of freezing.

The maximum amount of food you can freeze per day is indicated on the data plate situated inside the refrigerator compartment.

The first time, or after the freezer has been inactive, you can only freeze food after having let the appliance function at maximum.

Food can be frozen by enabling the **SUPER FREEZE** 24 hour function (see the paragraph on "How to use the display"). After 24 hours, or once the optimal temperatures have been reached, the rapid freezing function is automatically disabled. During the freezing process, avoid opening the door of the freezer.

In order to freeze and then thaw foods optimally, it is recommended that you divide food into small portions so that they freeze quickly and uniformly. The packages should be clearly marked with the content and the date they were frozen.

Do not open the freezer door in the event of a power failure or malfunction. This precaution will slow the rise in temperature within the compartment. If the door is not opened, frozen and fast-frozen foods will remain in their current state for approximately 9-14 hours.

Do not place full bottles in the freezer: they could easily burst because all liquids increase in volume when they freeze.

WARNING: to avoid blocking the air circulation inside the refrigerator, it is advisable not to obstruct the ventilation holes with food or containers.

Thanks to the special **ICE PARTY** function, you will no longer have to deal with the problem of finding broken bottles placed to cool inside the freezer compartment (all liquids, upon freezing, expand and increase in volume). By enabling this function, the appliance itself will let you know, by sounding a buzzer and by means of a visual signal (a message on the display in the form of scrolling text), when it is the best time to remove the bottle from the compartment. To turn the buzzer off and cancel the message from the display, just press the **RESET ALARM (C)** button. Do not forget to use the ergonomic bucket provided to store the bottle inside the freezer compartment; as well as accelerating the cooling process of the same, once it is time to serve it at the table, you can take it there easily thanks to the special handles and keep it cool at length at the table.

WARNING: always keep the bucket provided for the bottle inside the freezer compartment (even when you don't have bottles to cool); only this way can the low temperature of the liquid be guaranteed in a short amount of time. Remember that for optimal operation, the bucket with the bottle inside it should be stored in the top part "I" of the freezer compartment when the **ICE PARTY** function has been enabled.

Ice trays

This new concept of ice trays is an exclusive Merloni patent. The fact that they are situated on the inner door of the freezer compartment ensures greater ergonomics and cleanliness: the ice no longer comes into contact with the food placed inside the freezer compartment; furthermore, the dripping of the water during filling is avoided (a lid to cover up the hole after filling with water is also provided).

To remove the ice trays from their housings, push the tray upwards and then pull it out (fig. 4). To put the tray back in place, insert the top part into the special housing and, once in a vertical position, just let it drop into place.

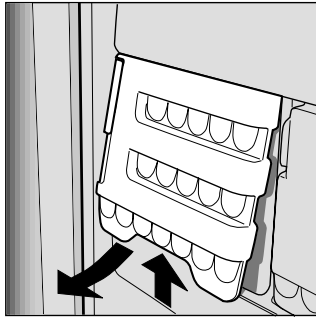


Fig. 4

Once the ice has formed, all you need to do is to knock the tray against a hard surface so that the ice cubes come away from their housing and come out of the same hole used to fill the tray with water. To make it easier for the ice cubes to come out, wet the outside of the tray.

WARNING: every time you fill up the ice tray with water, make sure that the same is completely empty and that there are no traces of ice left inside it.

The minimum time required for ice to form well is approximately 8 hours.

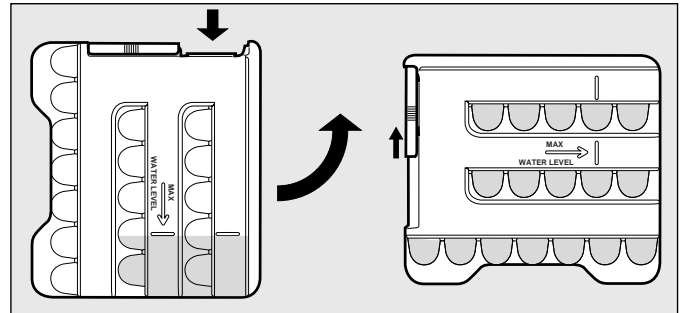


Fig. 5

Instructions for use (Fig. 5)

Fill up the tray with water via the special hole up to the level indicated (MAX WATER LEVEL), taking care not to exceed it: inserting more water than is necessary will lead to the formation of ice which could obstruct the exit of the ice cubes. If you have used an excessive amount of water, you will have to wait until the ice has melted, empty out the tray and re-fill it with water.

Once you have filled the ice tray up with water through the hole indicated, turn it by 90°. Thanks to the connected compartments, the water fills up the special shapes, after which you can cover the hole up with the special cap and place the ice tray in the inner door of the freezer compartment.

FOOD STORAGE

Meat and Fish

| Food | Wrapping | Tenderising (days) | Storage (months) | Thawing Time |
|-----------------------------------|--|--------------------|------------------|------------------------------|
| Beef Roast | Tinfoil | 2 / 3 | 9 / 10 | Not required. |
| Lamb | Tinfoil | 1 / 2 | 6 | Not required. |
| Pork Roast | Tinfoil | 1 | 6 | Not required. |
| Veal Roast | Tinfoil | 1 | 8 | Not required. |
| Veal/Pork Chops | Each piece wrapped in cling wrap and then in tinfoil (4 to 6 slices) | | 6 | Not required. |
| Veal/Lamb Cutlets | Each piece wrapped in cling wrap and then in tinfoil (4 to 6 slices) | | 6 | Not required. |
| Minced Meat | In aluminium containers covered with cling wrap. | Freshly minced | 2 | Slowly in refrigerator. |
| Heart and Liver | Plastic Baggies | | 3 | Not required. |
| Sausages | Cling Wrap or Tinfoil | | 2 | As necessary. |
| Chicken and Turkey | Tinfoil | 1 / 3 | 9 | Very slowly in refrigerator. |
| Duck and Goose | Tinfoil | 1 / 4 | 6 | Very slowly in refrigerator. |
| Pheasant, Partridge and Wild Duck | Tinfoil | 1 / 3 | 9 | Very slowly in refrigerator. |
| Hare and Rabbit | Tinfoil | 3 / 4 | 6 | Very slowly in refrigerator. |
| Venison | Tinfoil or Cling Wrap | 5 / 6 | 9 | Very slowly in refrigerator. |
| Large Fish | Tinfoil or Cling Wrap | | 4 / 6 | Very slowly in refrigerator. |
| Small Fish | Plastic Baggies | | 2 / 3 | Not required. |
| Crustaceans | Plastic Baggies | | 3 / 6 | Not required. |
| Shellfish | Store in salted water in aluminium containers or plastic containers. | | 3 | Very slowly in refrigerator. |
| Boiled Fish | Tinfoil or Cling Wrap | | 12 | In hot water. |
| Fried Fish | Plastic Baggies | | 4 / 6 | Directly in pan. |

FOOD STORAGE

Fruits and Vegetables

| Food | Preparation | Blanching Time | Wrapping | Storage (months) | Thawing Time |
|--|---|----------------|---|------------------|--|
| Apples and Pears | Peel and cut into slices. | 2' | In Containers (cover with syrup) | 12 | In refrigerator very slowly. |
| Apricots, Peaches, Cherries and Plums | Peel and pit. | 1' / 2' | In Containers (cover with syrup) | 12 | In refrigerator very slowly. |
| Strawberries Blackberries and Raspberries | Rinse and fry. | | In Containers (cover with sugar) | 10 / 12 | In refrigerator very slowly. |
| Cooked Fruit | Cut, cook and strain. | | In Containers (add 10% sugar) | 12 | In refrigerator very slowly. |
| Fruit Juice | Wash, cut and crush. | | In Containers (sugar to taste) | 10 / 12 | In refrigerator very slowly. |
| Cauliflower | Remove leaves, cut head into small pieces and blanch in water and a little lemon juice. | 2' | Plastic Baggies | 12 | Not required. |
| Cabbage and Brussel Sprouts | Wash and cut into small pieces. | 1' / 2' | Plastic Baggies | 10 / 12 | At room temperature. |
| Peas | Shell and wash. | 2' | Plastic Baggies | 12 | Not required. |
| French Beans | Wash and slice if required. | 2 | Plastic Baggies | 10 / 12 | Not required. |
| Carrots, Peppers and Turnips | Peel, wash and slice if necessary. | 3' / 4' | Plastic Baggies | 12 | Not required. |
| Mushrooms and Asparagus | Wash, peel and cut up. | 3' / 4' | Plastic Baggies or Containers | 6 | At room temperature. |
| Spinach | Wash and mince. | 2' | Plastic Baggies | 12 | At room temperature. |
| Vegetable for Soups | Wash and cut up in small pieces. | 3' | Plastic Baggies or Containers | 6 / 7 | Not required. |
| Various Foods | Preparation | Blanching Time | Wrapping | Storage (months) | Thawing time |
| Bread | | | Plastic Baggies | 4 | At room temperature and in the oven. |
| Cakes | | | Plastic Baggies | 6 | About 10 minutes at room temperature, cook at 100/200°C. |
| Cream | | | Plastic Containers | 6 | At room temperature or in refrigerator. |
| Butter | | | In original wrapping or tinfoil | 6 | In refrigerator. |
| Boiled Food or Vegetable Soup | | | Plastic or Glass Containers | 3 / 6 | At room temperature or in hot water. |
| Eggs | | | Freeze without shells in small containers | 10 | At room temperature or in refrigerator. |

ENERGY SAVING TIPS

- Install it well

And therefore far from heat sources, from direct sunlight, in a well aired place and according to the distances indicated in the section on "Installation/Aeration".

- Just the right cold

Too cold a compartment increases energy consumption.

- Do not Overfill

To conserve food properly, the cold air must circulate freely within the refrigerator. If it is overfilled, this will prevent proper air circulation, forcing the compressor to work continuously.

- Close the Doors

Open your refrigerator as little as possible because each time you do so you lose much of the cold air. To raise the temperature to the proper level again, the motor must work for a long time, consuming energy.

- Keep an Eye on the Seals

Keep the seals clean and make sure that they adhere well to the door. This alone will ensure that no cold air escapes.

- No Hot Foods

A hot pot or pan placed in the refrigerator immediately raises the temperature several degrees. Let hot cookware and food cool to ambient temperature before placing them in the refrigerator.

BUZZERS AND VISUAL WARNINGS

Door open alarm

If the refrigerator door is left open for more than two minutes, the internal light begins to flash; a buzzer sounds, and the latter can be turned off by shutting (or by opening and then shutting) the door or by pressing the **RESET ALARM (C)** button.

Abnormal freezer heating alarm

1. To signal an excessive heating on the part of the freezer, a buzzer will sound and a scrolling text message comes up on the display to signal an excessive heating of the compartment. To prevent food from refreezing, the freezer will try to maintain a temperature of 0°C, thus allowing you to use up the food within 24 hours. Cooked food can be refrozen. You can turn the buzzer off simply by pressing the **RESET ALARM (C)** button. To return to normal operation and cancel the alarm message from the display, press the **RESET ALARM (C)** button again.

2. If the temperature inside the freezer continues to rise to excessively high values, the buzzer will sound yet again and another scrolling text message will come up on the display to signal the dangerous state of overheating. We recommend you check the conditions of the food, as it may be necessary to throw it away. The buzzer can be turned off by simply pressing the **RESET ALARM (C)** button. To return to normal operation and cancel the alarm message from the display, press the **RESET ALARM (C)** button again.

CARING FOR YOUR APPLIANCE

Before performing any cleaning operations, unplug the appliance from the mains electricity supply (keep ON/OFF button "A" pressed down for more than two seconds, until OFF is displayed in both fridge and freezer compartments, then unplug the appliance). Should you fail to follow this procedure, an alarm condition may arise. **WARNING: this alarm is not a sign of an anomaly.** To restore your appliance's normal operating conditions, keep ON/OFF button "A" pressed down for more than two seconds to turn the appliance off and then turn it back on and set the required temperatures.

Cleaning and maintenance of the parts

HOLIDAY FUNCTION. Mould and bad odours forming inside your unused fridge when you go on holiday need no longer be a problem: just enable the Holiday function (from the display). This way, with limited energy consumption, the temperature of the refrigerator compartment is kept at around 12°C (you can store your make-up and beauty products in it, for example) and the freezer is operated at its minimum setting, which is essential for food preservation.



Before cleaning your refrigerator, keep ON/OFF button "A" pressed down for more than two seconds, until OFF is displayed in both fridge and freezer compartments, then unplug the appliance.

- Your appliance is manufactured with hygienic odourless materials. To preserve these characteristics, always use sealed containers for strong smelling foods to avoid the formation of odours that are difficult to remove.

- Use only a water and bicarbonate solution: Clean the internal and exterior of your appliance with a sponge soaked with a warm water and sodium bicarbonate solution, which is also a good disinfectant. If you do not have any sodium bicarbonate at home, use neutral detergent.

- What not to use: Do not use abrasive detergents, bleach or detergents containing ammonia. Never use solvent based products.

- All the removable parts can be cleaned by soaking in hot soapy water or detergent. Remember to dry thoroughly before replacing them.

- What about the back panel? Dust may deposit on the back panel and affect the proper running of the appliance. To remove dust, vacuum away the dust very carefully using the appropriate vacuum cleaner accessory.

- When the appliance is left unused for an extended amount of time. If you decide to switch your appliance off during the summer months, clean it on the inside and leave the doors open.

- Replacing the light bulb.

When replacing the lamp, disconnect the appliance from the mains, unscrew the burned out lamp and replace it with another following the steps illustrated in figure 4. Make sure that the wattage is not greater than 15W.

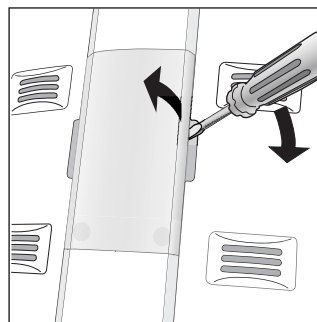


Fig. 6

TROUBLESHOOTING

The display is completely switched off

Have you checked whether:

- The main switch for the electricity to the apartment or home has been turned off;
- The plug is properly inserted in the outlet;
- The outlet is adequate; try inserting the plug into another outlet in the room;
- Check the fuse in the plug.

The motor does not start

Have you checked whether:

- 8 minutes have passed since you switched the appliance on?
This model is in fact provided with a motor protection control system which means that it will only start approximately 8 minutes after being switched on.

The display is faintly lit

Check that:

- Invert the plug in the outlet to see if this still happens.

The refrigerator and the freezer do not cool properly.

Have you checked whether:

- The doors do not close well or the seals are faulty;
- The doors are left open too long;
- the temperature setting is too hot (or not the best);
- The refrigerator or freezer is overfilled.

The food inside the refrigerator is freezing too much

Have you checked whether:

- the temperature setting is too low (or not the best);
- The food is in contact with the back wall - which is the coldest part.

The motor runs constantly

Have you checked whether:

- the **SUPER COOL** and/or **SUPER FREEZE** and/or **ICE PARTY** functions are enabled;
- The doors are not closed well or have remained open too long;
- The ambient temperature is too high;
- The thermostat knob is not on the proper setting.

The appliance makes too much noise.

The gas refrigerant produces a slight noise even when the compressor is not running (this is not a defect).

Have you checked whether:

- The refrigerator is level.
- The appliance was installed between cabinets or objects that vibrate and make noise.

If after all the checks, the appliance still does not operate or the problem persists, call Hotpoint Service (see KEY CONTACTS, back page) and inform them of: the type of problem, the abbreviation of the model name (Mod.) and the relative numbers (S/N) written on the rating plate located at the bottom left next to the vegetable crisper.

Never call on unauthorized technicians and always refuse spare parts which are not originals.

NOTES



After Sales Service

"No company is better positioned to offer an after sales service on a Hotpoint appliance than us - the manufacturer"

As part of our commitment to you, all Hotpoint appliances have the added benefit of a fully inclusive parts and labour guarantee for the first 12 months. In addition to this you also have the advantage of **free replacement parts for the first 5 years** when fitted by a Hotpoint engineer. When the 12 months parts and labour guarantee expires we offer the following after sales service options:

Repair Service and Information Help Desk

UK: 08709 066066

www.theservicecentre.co.uk

Republic of Ireland: 1850 302 200

Note: Our operators will require the Model number and the Serial number of your appliance

Available 364 days a year with a fast, effective and value for money service. We have the largest white goods repair service in the UK with over 1200 of our own fully trained engineers. All repairs include a parts and labour guarantee for 12 months from the date of the repair.

If you require any information or have any questions about your appliance, our operators are on hand with help and advice.

All this ensures that you will receive the best available after sales service possible.

Extended Warranties

UK: 08709 088 088

www.theservicecentre.co.uk

Republic of Ireland: 1850 502 200

Whether you have just one or a number of Hotpoint appliances in your kitchen, we offer two service cover plans to give you total peace of mind.

- Repair Protection Plan
 - FREE service repairs for a single Hotpoint appliance during the period of cover.
- Kitchen Cover
 - FREE service repairs for all your Hotpoint appliances less than 8 years old.

Genuine Parts and Accessories UK: 08709 077 077

www.theservicecentre.co.uk

Republic of Ireland: (01) 842 6836

A wide range of genuine parts and accessories are available from our hotline or through our web site.

Genuine parts and accessories, extended warranties and service repairs are all available on our web-site at:



www.theservicecentre.co.uk



Guarantee

"Satisfaction guaranteed or your money back"

We give you a unique 'satisfaction guaranteed' promise - **valid for 90 days** - after you have purchased your Hotpoint appliance. If there is a technical problem simply call Hotpoint Repair service or visit our web-site at www.theservicecentre.co.uk and where necessary, we will arrange for an engineer to call. If the technical problem is not resolved under this guarantee, **we will replace your machine or, if you prefer, give you your money back.**

All Hotpoint appliances carry a fully inclusive 12 month parts and labour guarantee as well as free replacement parts for the first 5 years (except microwaves, selected integrated appliances and cooker hoods, which have a one year guarantee) provided that they are fitted by a Hotpoint engineer.

Guarantee terms and conditions

Your guarantee is only applicable in the United Kingdom or Republic of Ireland and is subject to the following provisions that your appliance:

- Has been installed and used correctly in accordance with this instruction booklet.
- Has been used solely for domestic purposes and is located on domestic premises (ie. not for commercial or trade use).
- Has been properly connected to a suitable electrical supply voltage as stated on the appliance rating plate.
- Has not been subject to misuse, accident, modified or repaired by anyone other than one of our own service engineers.



For pre purchase information on any other Hotpoint product call: 08701 50 60 70
or visit: www.hotpoint.co.uk



Recycling & Disposal Information

As part of Hotpoint's continued commitment to helping the environment, Hotpoint reserves the right to use quality recycled components to keep down customer costs and minimise material wastage.

Please dispose of packaging and old appliances carefully.

To minimise risk of injury to children, remove the door, plug and cut mains cable off flush with the appliance. Dispose of these parts separately to ensure that the appliance can no longer be plugged into a mains socket, and the door cannot be locked shut.



Key Contacts

After Sales Service

Over 1200 trained specialists, directly employed by us, ensure that you can have complete confidence in both the appliances and services we offer.



Repair Service and Information Desk

UK: 08709 066 066

(Open 8 to 8 Mon - Fri, 8 to 6 Sat, 10 to 4 Sun & Bank Holidays)

www.theservicecentre.co.uk

Republic of Ireland: 1850 302 200

Note: Our operators will require the following information:

Model number:

Serial number:

Extended Warranties

UK: 08709 088 088

(Open 8 to 8 Mon - Sun)

www.theservicecentre.co.uk

Republic of Ireland: 1850 502 200

Genuine Parts and Accessories

UK: 08709 077 077

(Open 8-30 to 5-30 Mon - Fri & 9 to 12 Sat)

www.theservicecentre.co.uk

Republic of Ireland: (01) 842 6836