



Meat Grinders

Models: 177MG12, 177MG22

08/2012

Please read and keep these instructions. Indoor use only.

Overview

Description

With superior technology and design, Avantco Meat Grinders have the following advantages:

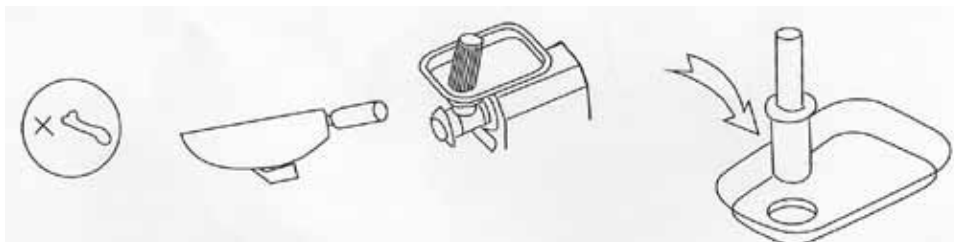
1. Totally enclosed gear-driven, compact structure and stable operation.
2. Health and hygiene is our main goal. Parts and body in contact with food are made of high-quality stainless steel, without sharp edge and gaps. Easy to clean.
3. Electric motor is easy to install and maintain.
4. High meat output.

Main Technical Parameters

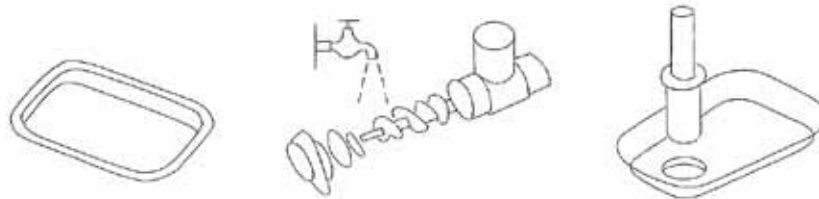
Model	Rated Voltage	Rated Frequency	Motor Power	Quantity of Meat Ground	Net Weight
177MG12	110V / 60 hz	50/60Hz	1 HP	260lbs / hr	57 lbs.
177MG22	110V / 60 hz	50/60Hz	1 1/2 HP	480lbs / hr	71 lbs.

Operating Instructions

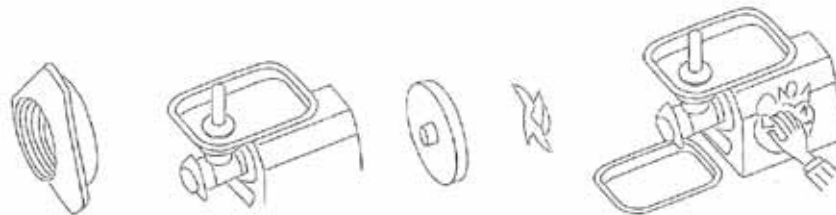
1. Ensure you are using the same input voltage, rated voltage, ground wire and plug socket as listed in the manual.
2. Remove and clean parts of meat grinder before and after use. Use parts diagram to ensure reassembly is done correctly. Parts such as the knives and grinder plates need to be correctly installed for the Meat Grinder to operate properly.
3. Remove skin and bones, and cut meat into pieces of the same size as the feeding hole.



4. Use included feeding bar to feed meat into grinder.
- **DO NOT USE OTHER TOOLS!**
5. Thoroughly clean each part of the grinder after use.



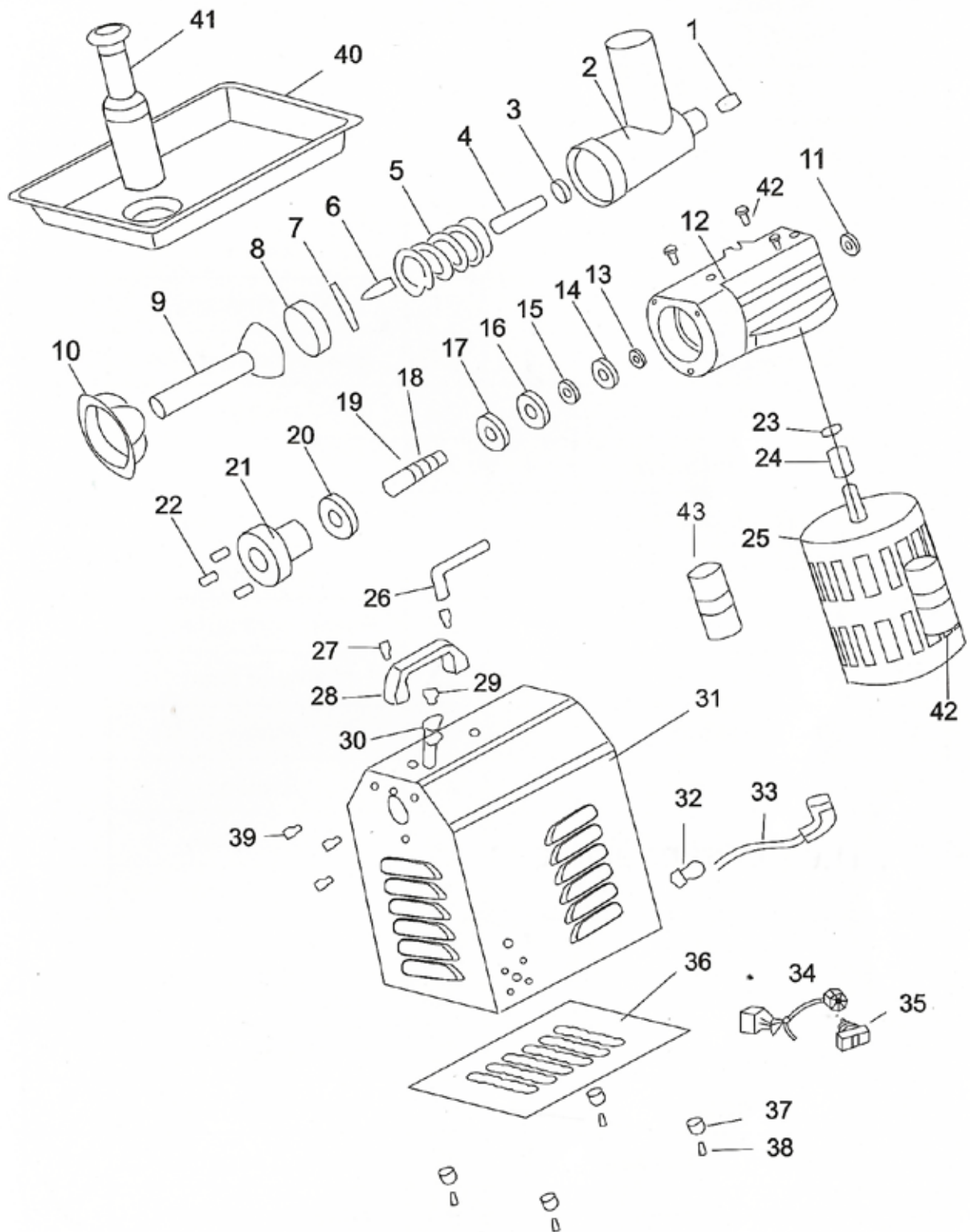
6. Non-smooth meat output may be caused by multiple factors:
 - a. Ensure the handle cap is tight, the round knife is clean and unblocked, and the grinder blade is sharp. You may have to clean or replace parts to obtain desired results.
 - b. Round knife is blocked. It is workable after cleaning.
 - c. Grinder blade is too blunt. It is necessary to sharpen or replace it.



Maintenance

1. Thoroughly clean the machine body regularly using a damp cloth.
2. Regularly lubricate oil seal of gear box through screw hole every six months.
3. To prevent blade damage, sharpen or replace it when needed.

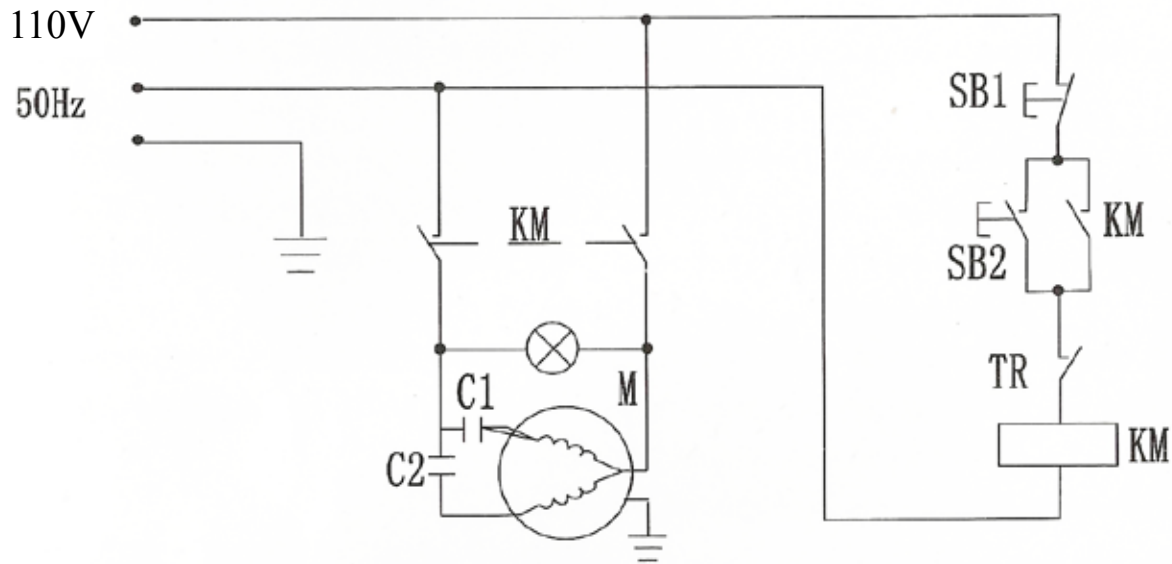
Parts Diagram



Parts Overview

No.	Description	Qty.	No.	Description	Qty.
1	Bronze bushing	1	23	Screw nut	1
2	T link	1	24	Worm	1
3	Nylon gasket	1	25	Motor	1
4	Back pin	1	26	Hex Wrench	2
5	Screw pushing bar	1	27	Socket head screw	1
6	Front pin	1	28	Handle	1
7	Four-leaf blade	1	29	Seal screw	1
8	Round knife	1	30	Locking screw	1
9	Funnel	1	31	Enclosure	1
10	Four-leaf handle cap	1	32	Power cord bushing	1
11	Oil screw	1	33	Power line	1
12	Gear box	1	34	Relay	1
13	Clamp spring	1	35	Switch	1
14	Bearing	1	36	Bottom plate	1
15	Bushing	1	37	Rubber pad	4
16	Worm wheel	1	38	M6 screw	4
17	Bearing	1	39	Hexagonal screw	3
18	Flat key	1	40	Stainless steel square plate	1
19	Worm shaft	1	41	Meat stuffing bar	1
20	Skeleton type oil seal	1	42	Starting capacitor	1
21	Adapter sleeve	1	43	Running capacitor	1
22	Socket head screw	3			

Schematic Diagram



M-Moter C1-Capacitor Initiator C2-Capacitor start SB1-Switch-off button
SB2-Switch-on button KM-Relay TR-overheating protection switch

Note:

The diagram above is only for reference. It can be altered without prior notice.