

GE Monogram®

Installation

Instructions

Stainless Steel  
36" Built-In  
Refrigerators  
and Freezers

*Models*

*ZIRS36N LH - All Refrigerator*

*ZIRS36N RH - All Refrigerator*

*ZIFS36N LH - All Freezer*

*ZIFS36N RH - All Freezer*

Before you begin - Read these instructions completely and carefully.  
 IMPORTANT - Save these instructions for local inspector's use.  
 IMPORTANT - OBSERVE ALL GOVERNING CODES AND ORDINANCES.  
 Note to Installer - Be sure to leave these instructions with the Consumer.  
 Note to Consumer - Keep these instructions with your Use and Care Book for future reference.

**⚠ WARNING** This appliance must be properly grounded. See "Grounding the Refrigerator," page 7.

**⚠ ATTENTION** Cet appareil doit être correctement mis à la terre.  
 Consulter « Mise à terre du réfrigérateur », page 7.

If you received a damaged product, you should immediately contact your dealer or builder.

Proper installation is the responsibility of the installer. Product failure due to improper installation is not covered under the GE Appliance Warranty. See the Owners' Manual for warranty information.

**For Monogram local service in your area,**  
**1-800-444-1845.**  
**For Monogram Service in Canada,**  
**1-888-880-3030.**  
**For Monogram Parts and Accessories, call**  
**1-800-626-2002.**

### ⚠ WARNING

- Use this appliance only for its intended purpose.
- Immediately repair or replace electric service cords that have become frayed or damaged.
- Unplug the refrigerator before cleaning or making repairs.
- Repairs should be made by a qualified service technician.

### ⚠ ATTENTION

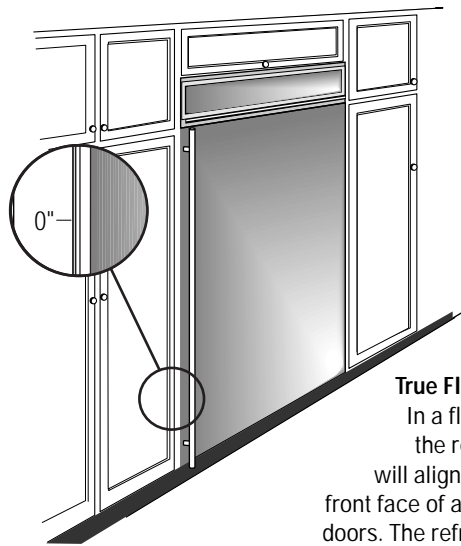
- Il ne faut utiliser cet appareil que pour l'usage pour lequel il a été construit.
- Il faut réparer ou remplacer immédiatement tout cordon d'alimentation électrique effiloché ou endommagé.
- Débrancher le réfrigérateur avant le nettoyage ou toute intervention.
- Les réparations doivent être faites par un technicien qualifié.

## Contents

<b>Design Information</b>	
Flush or Semi-Flush Enclosure Installations .....	3
Enclosure Cutout and Product Dimensions .....	3, 4
Installation Examples .....	4, 5
Product Dimensions .....	5
<b>Installation Preparation</b>	
Clearances .....	6
Electrical and Water Connection Location .....	6
Accessory Grille Panel Kits .....	6
Grounding the Refrigerator .....	7
Tools Required .....	8
Materials Required .....	8
Hardware Supplied .....	8
Hardware Recommendations .....	8
Flooring .....	8
Step 1: Remove Packaging .....	8
<b>Installation Instructions</b>	
Step 2: Install Water Line .....	9
Step 3: Install Side Panels .....	10
Step 4: Install Anti-Tip Brackets .....	10
Step 5: Level Refrigerator .....	11
Step 6: Optional Anti-Tip Precaution .....	11
Step 7: Connect Water Supply .....	11
Step 8: Connect Power .....	12
Step 9: Mount Top Grille Panel .....	12
Step 10: Adjust Door Alignment .....	12
Step 11: Install Toekick .....	13
Step 12: Set Temperature Controls .....	13
Step 13: Start Icemaker .....	13
Problem Solving .....	13
<b>ZFC1 Trim Kit for Side to Side Installation</b> .....	14
<b>ZUGSS Unified Grille Panel Kit</b> .....	15

### Advance Planning

#### Flush or Semi-Flush Enclosure Installations

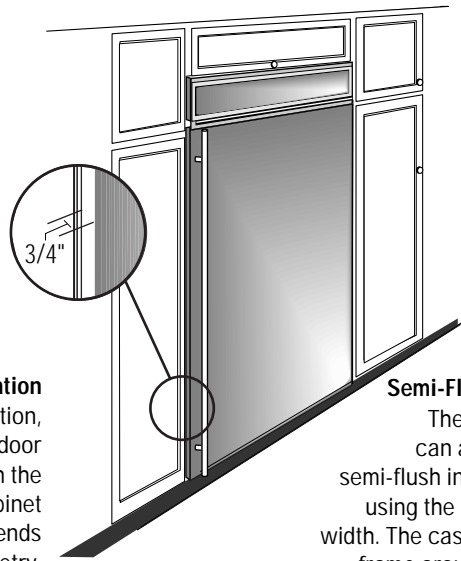


#### True Flush Installation

In a flush installation, the refrigerator door will align evenly with the front face of adjacent cabinet doors. The refrigerator blends into the surrounding cabinetry.

Monogram built-in refrigerators and freezers can be installed flush with typical 24-3/4" deep cabinetry.

When installed semi-flush, the case trim will conceal slight gaps around the enclosure. The refrigerator will project forward approximately 3/4" beyond the front face of surrounding cabinetry.



#### Semi-Flush Installation

These refrigerators can also be installed semi-flush into an enclosure using the minimum cutout width. The case trim creates a frame around the opening.

#### Side Panel Requirements:

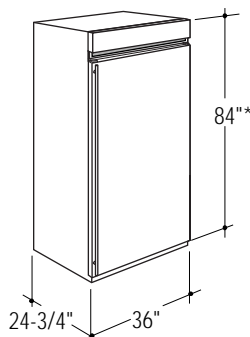
- Side panels are not required whenever the refrigerator or freezer is installed into an enclosure or between pantry and oven cabinets.
- Side panels are required whenever the sides of the product are exposed.
- Side panel sizes vary depending on the type of installation being made.

#### To accomplish an attractive installation, you must:

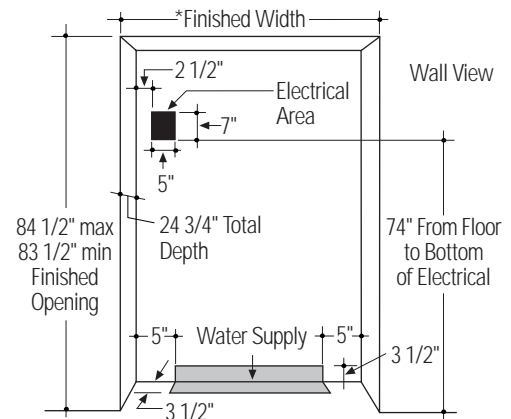
1. Determine the need for side panels.
2. Determine side panel thickness.
3. Order matching side panels from the cabinet manufacturer. Be sure to provide the exact dimensions.

#### Enclosure Cutout and Product Dimensions

- To achieve a flush fit, the finished cutout width must be at least 36" wide.
- In a semi-flush installation, the finished cutout must be 35-1/2".
- The electrical and water locations must be located as shown for either type of installation.



\*Shipped at 84" installation height. Can be adjusted to 83-1/2" or 84-1/2" with grille panel kits.



\*36" for a flush installation.

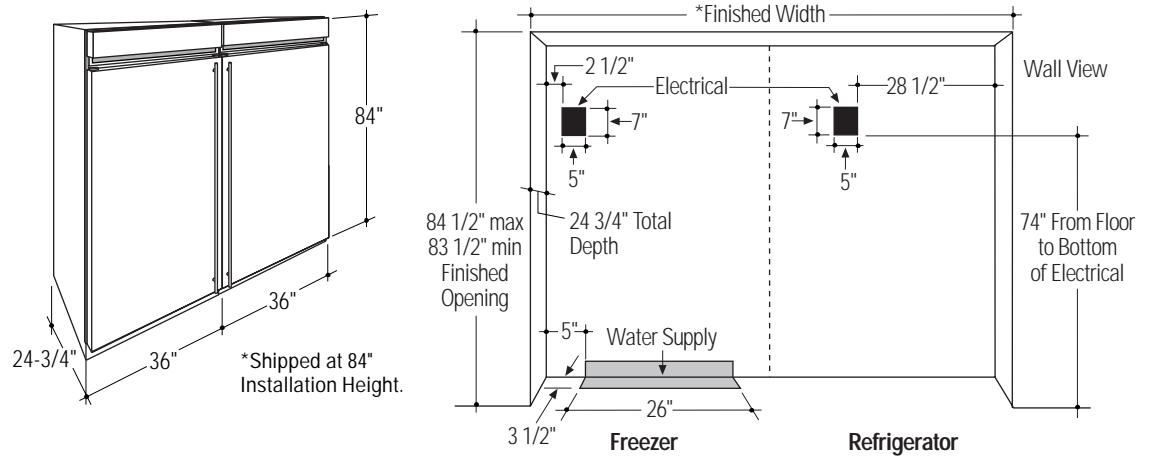
35-1/2" Min. for a semi-flush installation.

**Note:** Additional cutout width may be required when side panels are used. Add side panel thickness to the finished cutout to calculate rough-in width. See installation examples on the following page.

## Design Information

### 36" Stainless Steel Refrigerators, Freezers

#### Side By Side Installation Of Freezer And Refrigerator



For a complete food storage center, install a Monogram Freezer and Refrigerator side by side. For even more capacity, install two refrigerators and on or two freezers.

- Order ZFC1 Trim Kit to cover the side trim and/or gap between the two products.
- Order ZUGSS Unified Grille Panel Kit for one continuous stainless steel grille panel.

\*72" min. for a flush installation  
71-1/2" min. for a semi-flush installation

**Note:** Additional cutout width may be required when side panels are used. Add side panel thickness to the finished cutout to calculate rough-in width. See installation examples below.

- The electrical and water locations must be located as shown for either type of installation. A separate 115V, 60Hz., 20 amp power supply is recommended for each product.

#### Installation Examples

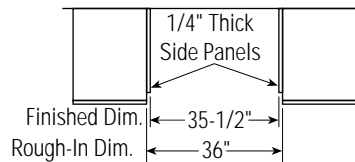
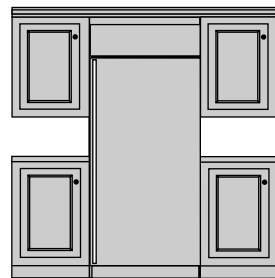
Side panels are required whenever the sides of the product will be exposed.

1/2" to 3/4" side panels are normally set into place and fastened to adjacent cabinetry or to the back wall before rolling the refrigerator or freezer into the opening.

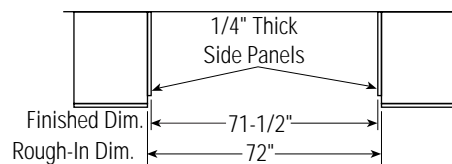
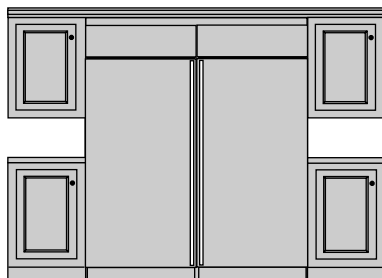
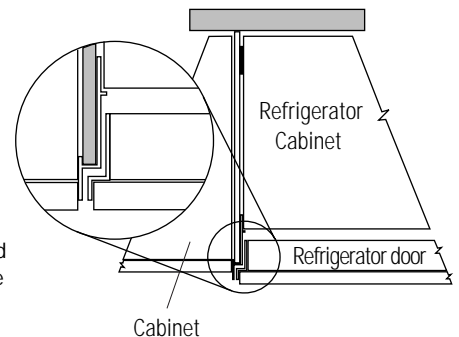
Therefore, the rough-in dimensions must allow for side panel thickness. In both a flush and semi-flush installation, the finished dimension, (the width of the opening after side panels are installed), must accommodate the full width of the product.

See page 10 for side panel sizes.

#### Installation Between Base & Wall Cabinets



**Note:** 1/4" thick side panels can be inserted into the case trim, making the rough-in the same as the outside trim width, 36".

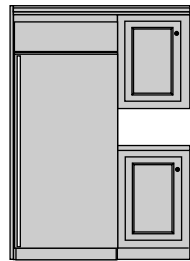


ZFC1 Trim Kit to cover side trim and/or gap between the two products. Order ZUGSS Unified Stainless Steel Grille Panel Kit for one continuous panel.

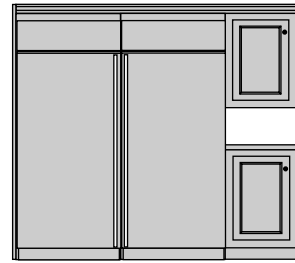
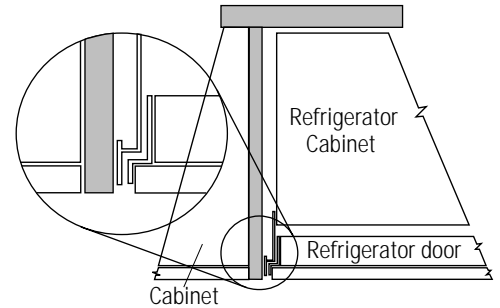
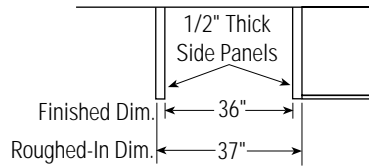
## Design Information

### 36" Stainless Steel Refrigerators, Freezers

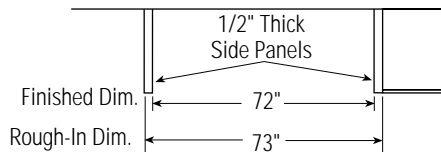
#### Installation At End-of-Run



Refrigerator or Freezer



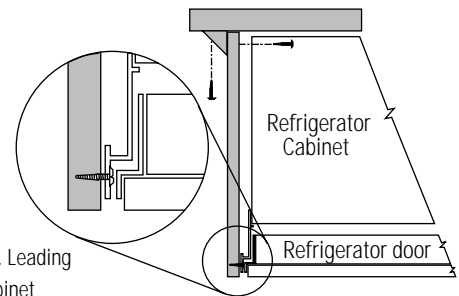
Refrigerator and Freezer  
installed side-by-side



**Note:** 1/2" thick side panels shown. Side panels can be any thickness. Add side panel thickness to outside trim width, (36" or 72" for two models) to calculate the rough-in dimension. The leading (front) edge must be finished to match surrounding cabinetry.

#### Frameless Cabinets

Side panels, 1/2" minimum thickness are required when using frameless cabinets. The side panel acts as a spacer between the cabinet and the case trim and prevents interference with cabinet door swing. The leading (front) edge must be finished to match surrounding cabinetry.



1/2" To 3/4" Side Panels. Leading  
Edge Flush With Cabinet

#### Product Dimensions

##### ZIRS36N RH, Refrigerator

##### ZIFS36N RH, Freezer

Handle on the left side, the door swings left to right.

##### ZIRS36N LH, Refrigerator

##### ZIFS36N LH, Freezer

Handle on the right side, the door swings right to left.



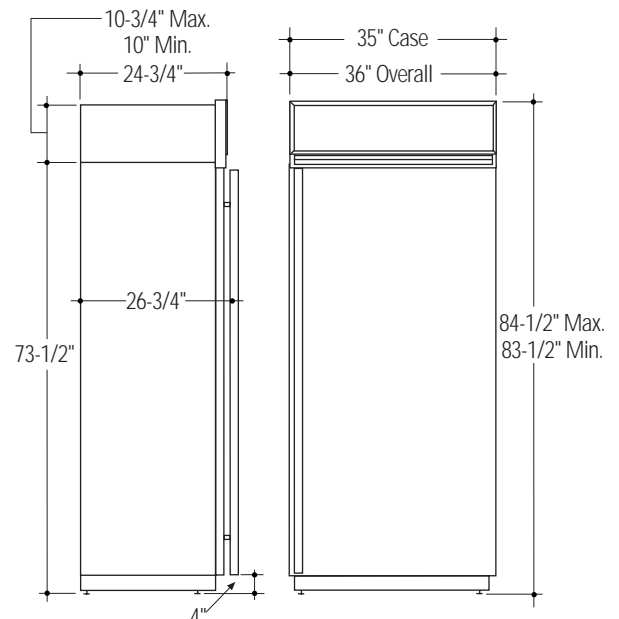
### CAUTION

Refrigerators are much heavier at the top than at the bottom – be extra careful when moving.



### PRUDENCE

Les réfrigérateurs sont beaucoup plus lourds en haut qu'en bas. Il faut être prudent lors des déplacements.



## Installation Preparation

### 36" Stainless Steel Refrigerators, Freezers

#### Clearances

When installed into a corner: Allow 15" clearance on the hinge side for a 130° opening and full extension of bottom pans and pan removal.

Two products installed side-by-side, both with hinges on left sides (or right sides) will require a 2" min. clearance between the products. The 2" min. separation will prevent one door handle striking the handle on the opposite product.

#### Electrical and Water Connection Locations

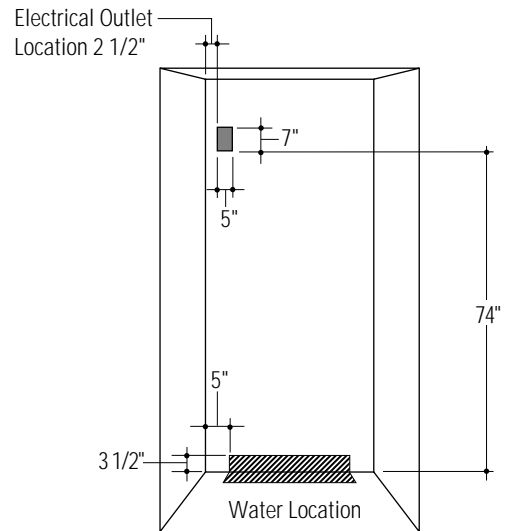
The water line can be routed through the floor or back wall.

- The icemaker water line should be:
  - Approximately 3-1/2" from the floor on the back wall, or 3-1/2" from the back wall on the floor.
  - At least 5" from either side of the opening.

A 115 volt, 60 Hz. 15 or 20 amp power supply is recommended. An individual properly grounded branch circuit or circuit breaker is recommended, as noted on the rating plate.

- Locate the electrical outlet within 5" x 7" shaded area shown.
  - 2-1/2" from the left side.

Between 74" and 81" from the floor.



**Important:** To insure a flush fit and access to the power cord, locate the electrical outlet as shown.

#### Accessory Grille Panel Kits

These models are factory set for 84" installation height. Adjustments to 83-1/2" or 84-1/2" heights can be made by changing the grille panel.

**Order ZGCSS36RH** (right hand) or **ZGCSS36LH** (left hand) Grille Panel Kit. These kits include 2 grille panels, for 83-1/2" and 84-1/2" installation heights.

#### ZUGSS Unified Grille Panel Kit

For side by side installation, order ZUGSS grille panel kit. This kit provides one continuous panel to span the width of two products installed together for a unified appearance.

# Installation Preparation

## 36" Stainless Steel Refrigerators, Freezers

### Grounding the Refrigerator

**IMPORTANT - (Please read carefully)**

**FOR PERSONAL SAFETY, THIS APPLIANCE MUST BE PROPERLY GROUNDED.**

The power cord of this appliance is equipped with a 3-prong (grounding) plug which mates with a standard three-prong (grounding) wall receptacle to minimize the possibility of electric shock hazard from this appliance.

Have the wall outlet and circuit checked by a qualified electrician to make sure the outlet is properly grounded.

Where a standard 2-prong wall outlet is encountered, it is your personal responsibility and obligation to have it replaced with a properly grounded 3-prong wall outlet.

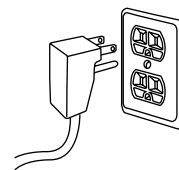
#### **IMPORTANT:**

We recommend two separate 115V, 60Hz, 20 amp properly grounded electrical outlets for a side by side installation of two products. Each electrical outlet should have a voltage rating that matches the rating plate.

#### **Use of Adapter plug**

Because of potential hazards under certain conditions, we strongly recommend against use of an adapter plug. However, if you still elect to use an adapter, where local codes permit, a TEMPORARY CONNECTION, may be made to a properly grounded 2-prong wall outlet by use of a UL listed adapter available at most hardware stores.

The larger slot in the adapter must be aligned with the larger slot in the wall outlet to provide proper polarity in the connection of the power cord.



**DO NOT, UNDER ANY CIRCUMSTANCES, CUT OR REMOVE THE THIRD (GROUND) PRONG FROM THE POWER CORD.**

When disconnecting the power cord from the adapter, always hold the adapter in place with one hand and pulling the power cord with the other hand. If this is not done, the adapter ground terminal is very likely to break with repeated use.

Should the adapter ground terminal break, **DO NOT USE** the appliance until a proper ground has again been established.

#### **Use of Extension Cords**

Because of potential safety hazards under certain conditions, we strongly recommend against the use of an extension cord. However, if you still elect to use an extension cord, it is absolutely necessary that it be a UL listed 3-wire grounding type appliance extension cord having a grounding type plug and outlet and that the electrical rating of the cord be 15 amperes (minimum) and 120 volts.



### PRUDENCE

FICHE D'ADAPTATION

(Fiches d'adaptation non permises au Canada)



### CAUTION

Attaching the adapter ground terminal to a wall outlet cover screw does not ground the appliance unless the cover screw is metal, and not insulated, and the wall outlet is grounded through the house wiring. You should have the circuit checked by a qualified electrician to make sure the outlet is properly grounded.

# Installation Preparation

## 36" Stainless Steel Refrigerators, Freezers

### Tools Required

- Tinsnips to cut banding
- Stepladder
- Bucket
- Level
- 1-1/4" open-end wrench
- Appliance hand truck
- Tubing cutter
- 7/16" open-end wrench
- #2 Phillips screwdriver
- Stubby Phillips screwdriver
- Drill and appropriate bits
- 7/16" socket with 3" extension for ratchet
- Safety glasses

### Materials Required

- 2x4, 35" long, for Anti-Tip support, see page 10
- Stick-on hook and loop fastener strips for 1/4" side panels
- Copper waterline tubing
- Water shut-off valve (optional but recommended)
- Screws to secure refrigerator to cabinetry

### Hardware Supplied

- 1/4-1/4 union with nuts
- Anti-tip mounting brackets

### Hardware Recommendations

- Water shut-off valve
- Water filter WR97X0214

### Flooring

For proper installation, the refrigerator and freezer must be placed on a level surface of hard material that is at the same height as the rest of the flooring. This surface should be strong enough to support a fully loaded product.

**Note:** Protect the finish of the flooring. Cut a large section of the cardboard carton and place under the product where you are working.

### Step 1 Remove Packaging



#### CAUTION

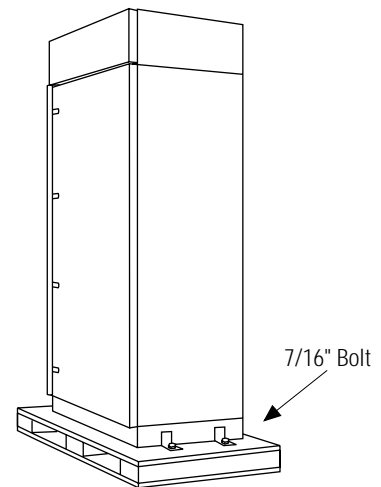
Refrigerator is much heavier at the top than at the bottom – be careful when moving. When using a hand truck, handle from side only.



#### PRUDENCE

Le réfrigérateur est beaucoup plus lourd en haut qu'en bas. Il faut être prudent lors des déplacements. Si un diable est utilisé, il faut soulever le réfrigérateur sur le côté seulement.

- Remove outer carton.
    - Carefully cut banding at the top and bottom.
  - Slide out back corner posts (2).
  - Slide carton off top of cabinet.
  - Remove styrofoam pads taped to base cabinet.
- NOTE: IT IS NOT NECESSARY TO LAY CABINET DOWN IN ORDER TO REMOVE SKID!**
- The unit is secured to the skid with 3 slotted tie-down straps. First remove the 5/16" bolts from the base channels in the tie-downs, then remove the 7/16" bolts securing the straps to the skid.
  - Protect the flooring. Cut a large piece of the cardboard carton and place under the product where you are working.
  - Support blocks on the bottom must be removed before sliding unit off skid. Remove support blocks by carefully tilting cabinet to side and sliding out.
  - Carefully slide product off skid.



#### CAUTION

DO NOT ATTEMPT TO ROLL UNIT OFF SKID.



#### PRUDENCE

IL NE FAUT PAS ESSAYER DE FAIRE ROULER LE RÉFRIGÉRATEUR POUR L'ENLEVER DE LA PALETTE.

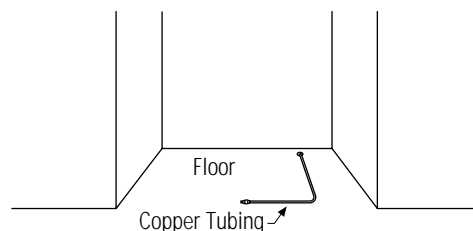


## Installation

### 36" Stainless Steel Refrigerators, Freezers

#### Step 2 Install Freezer Water Line

- A cold water supply is required for automatic icemaker operation. The water pressure must be between 20 and 120 p.s.i.
- Route 1/4" OD copper tubing between house cold water line and the water connection location.
- Copper tubing should be long enough to extend to the front of the freezer. Allow enough to accommodate bend leading into the water valve.



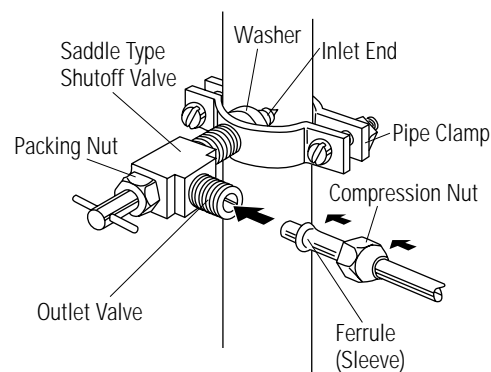
#### Shut off the main water supply.

Turn on the nearest faucet long enough to clear the line of water.

Install a shut-off valve between the icemaker water valve and cold water pipe in a basement or cabinet. The shut-off valve should be located where it will be easily accessible.

NOTE: It is best to install the valve into a vertical water pipe. If you install the valve into a horizontal water pipe, make the connection at the top or side, rather than at the bottom, to avoid drawing off any sediment from the water pipe.

- Drill a 1/4" hole in the water pipe.
- Fasten the shut-off valve to the pipe with pipe clamp.
- Tighten the clamp screws until the sealing washer begins to swell. Do not over tighten.
- Place a compression nut and ferrule (sleeve) onto the end of the tubing and connect it to the shut-off valve. Make sure the tubing is fully inserted into the valve and ferrule is tightened.
- Turn on the main water supply and flush debris from the line. Run about a quart of water through the tubing into a bucket. Shut off water supply at the shut-off valve.



NOTE: Commonwealth of Massachusetts Plumbing Codes 248CMR shall be adhered to. Saddle valves are illegal and use is not permitted in Massachusetts. Consult with your licensed plumber.

NOTE: Saddle type shut-off valves are included in many water supply kits. Before purchasing, make sure a saddle type valve complies with your local plumbing codes.

- Install optional water filter in the water line near the freezer. A water filter is recommended in areas where water supply contains sand or particles. Installation instructions are packed with the filter.

# Installation

## 36" Stainless Steel Refrigerators, Freezers

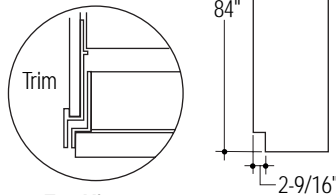
### Step 3 Install Side Panels

- Side panels are required whenever the sides of the product will be exposed and when installed between frameless cabinets. See pages 3 and 4.
- Side panels are not required when installed into an enclosure.
- Side panel installation will be determined by the design of the side panel you have previously chosen.
- Side panels must be installed plumb.

- If you choose to use 1/4" side panels, they should be inserted into the case trim as illustrated. Fasten the panels to the product with stick-on hook and loop fastener strips before setting in place. See illustration A.
- 1/2" to 3/4" side panels are normally set into place and fastened to adjacent cabinetry or the back wall before rolling the product into the opening. See illustration B.

#### Illustration A

1/4" Side Panels – Insert end of side panel into case trim. Fasten with Velcro strips included.

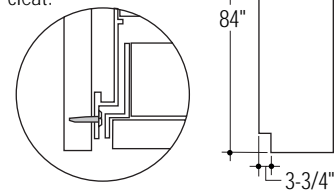


Top View

Standard 4" high toe-kick or trim to fit. Height may vary depending on application.

#### Illustration B

1/2" to 3/4" Side Panels – Leading edge of side panel is flush with cabinet front. Fasten to the back wall using a cleat.



Top View

Standard 4" high toe-kick or trim to fit. Height may vary depending on application.

### Step 4 Install Anti-Tip Brackets



#### WARNING

#### ANTI-TIP PRECAUTIONS

The refrigerator is top-heavy and must be secured to prevent the possibility of tipping forward.

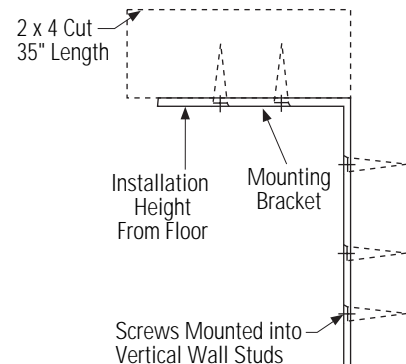
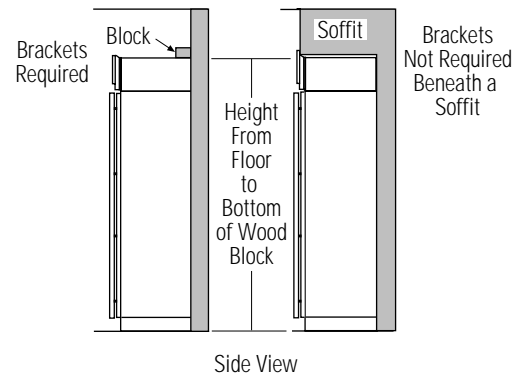


#### ATTENTION

#### PRECAUTIONS CONTRE LES BASCULEMENTS

Le réfrigérateur est beaucoup plus lourd en haut et il faut le maintenir en place pour éviter la possibilité de son basculement vers l'avant.

- Cut a 2" x 4" x 35" block and secure the block to the mounting brackets provided using #12 or #14 wood screws.
- Secure the bracket with wood block to the back wall so that it is 84" (or your installation height) from the finished floor. Use #12 or #14 wood screws. See illustration.
- Screws must penetrate at least one inch into vertical wall studs.
- Gently push refrigerator into the opening with hands against front corners.



**Important Note:** When the refrigerator is installed under a soffit or if there is not enough height for this method of security, brackets cannot be used. Proceed to step 5 to level the refrigerator and then to step 6 to secure refrigerator to cabinets. The refrigerator must be secured to prevent tipping.

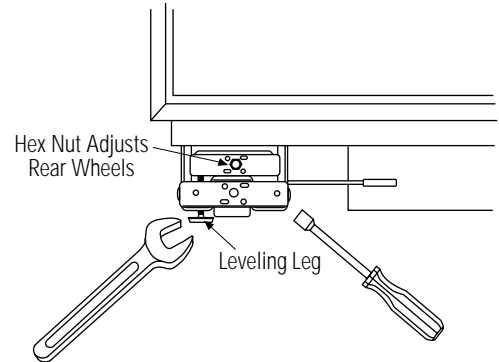
# Installation

## 36" Stainless Steel Refrigerators, Freezers

### Step 5 Level Refrigerator

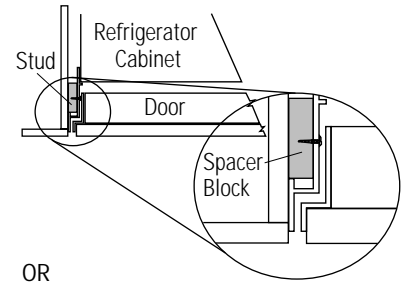
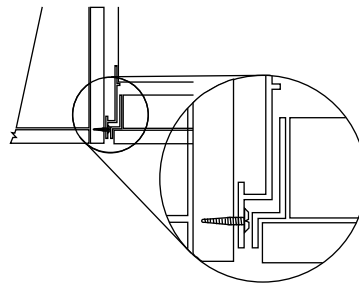
These products have a 4-point leveling system. The front is supported by leveling legs, the rear is supported by wheels.

- Adjust rear wheels beneath the product to just barely touch the 2x4 block.
- Turn the 7/16" hex nut located above the front wheels. Turn to raise or lower.
- For front leveling legs, use a 1-1/4" open-end wrench.
- Adjust carefully, the product should be level and plumb with cabinetry, and should align with toekick height.



### Step 6 Secure Product to Sides

**Note:** Whenever possible, perform this step for additional anti-tip security. This step can be used as an alternate to Step 4, Anti-Tip bracket installation, whenever brackets cannot be used.



When using 1/2" to 3/4" side panels, the front flange of the case trim is attached to the side panel.

- Open door to access case trim.
- Drill hole in trim below interior opening. Drive screw through trim and side panel.
- Follow the same procedure on opposite side.

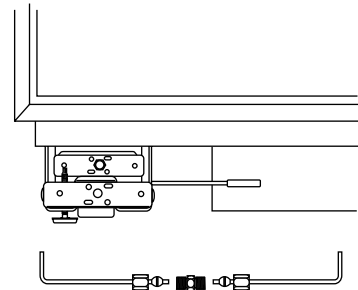
If installed between cabinets with no side panels or in a custom enclosure, install a spacer block as shown.

- Open door to access case trim.
- Drill hole in trim below opening. Drive screw through trim and into block.
- Follow the same procedure on opposite side.

### Step 7 Connect Freezer Water Supply

**Check to be sure that power cord is not plugged into the wall outlet.**

- Locate and bring copper tubing to the front of the cabinet.
- The copper tubing should be just long enough to reach the coupling. Excess tubing length could interfere with door closing or toekick installation.
- Slip a 1/4-1/4 union nut (provided) over both ends of the copper tubing at the left front leg of the freezer and couple the lines.
- Turn on the water to check for leaks.

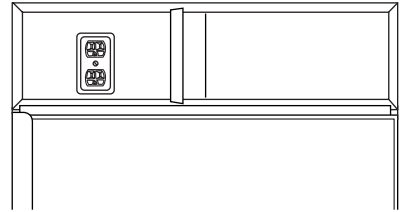


# Installation

## 36" Stainless Steel Refrigerators, Freezers

### Step 8 Connect Power

- Connect the power cord plug to properly grounded receptacle, accessible through the top left side of the hood opening.
- Check to make sure power is on by opening the door to see if interior lights are on.



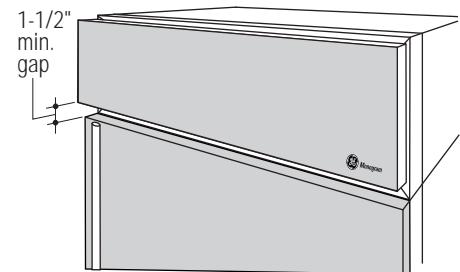
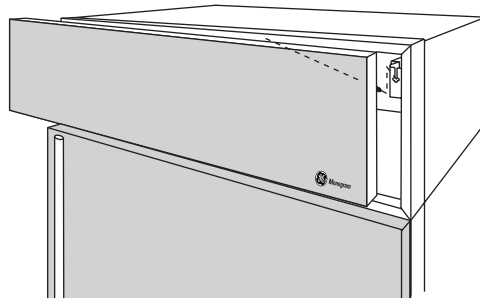
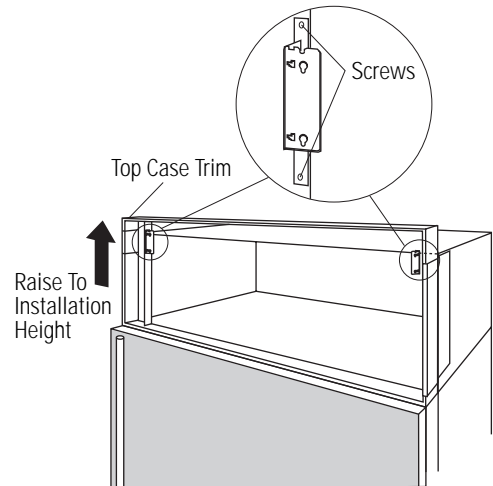
### Step 9 Mount Top Grille Panel

For shipping purposes, the top case trim is secured at 84" installation height.

**To raise case trim to 84-1/2" installation height or to lower case trim to 83-1/2":**

- Loosen 2 screws on both sides and raise or lower the top case trim to meet soffit height or to the top of adjacent cabinets.
- Tighten all 4 screws.
- Mount the grille panel by dropping into slots on the case trim.

The grille panel assembly is factory set for an 84" installation height. If installation height is 83-1/2" or 84-1/2", order ZGCSS36RH (right hand) or ZGCSS36LH (left hand) grille panel kit.



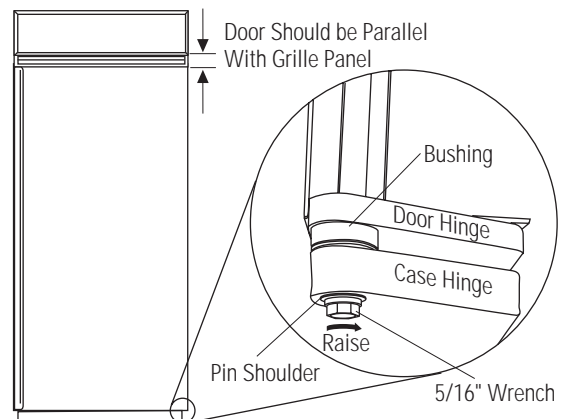
**Important:** Maintain 1-1/2" min. gap between top of doors and bottom of grille panel.

### Step 10 Adjust Door Alignment

Check door alignment. The top of the door should be parallel with the grille panel. If the door appears to be too high or too low on the handle side, adjustments can be made by turning the hinge.

- To raise the door, turn adjustable hinge pin towards the right.
- To lower the door, turn hinge pin towards the left.

Turn the hinge pin with a 5/16" wrench or, on some models use the 3/16" Allen wrench taped to the hinge.



- See

#### Impor

m

ce before

green light w  
rations

• If the product does not  
operate for 15 minutes for  
operation.

#### Operation of Refrigerator

If the product does not  
operate, see the installation instruc

- Check to be sure the  
outlet.
- Check to be sure the  
turned on.

If a  
Call

#### Cleanin

Stainless  
characterist  
freezer looking  
Stainless Steel

#### Stainless Steel

Home Depo

It is also av  
1-800-626-2

Other  
Parts by calling  
number WX10X15.

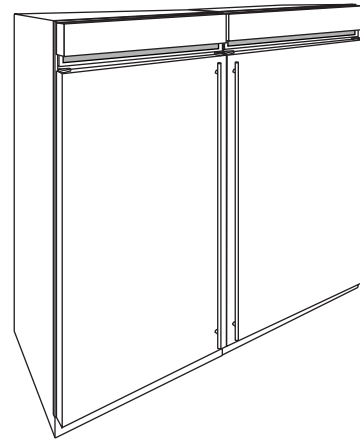
# ZFC1 Trim Kit

## Side by Side Installation

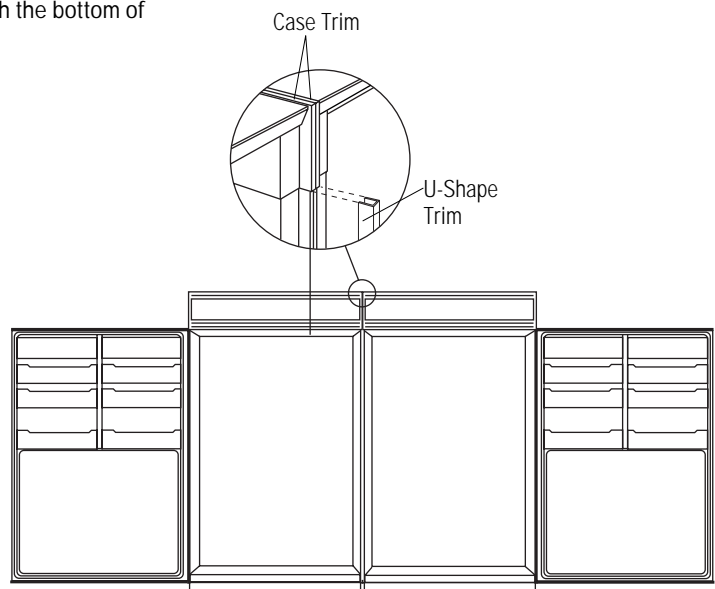
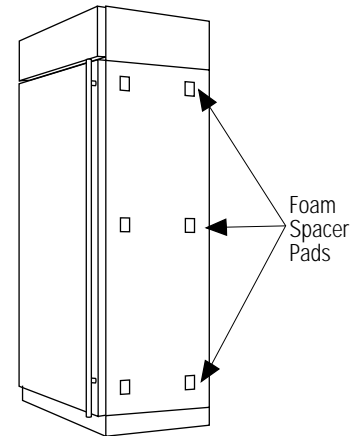
For the ultimate in convenience, install a refrigerator and freezer side by side.

This trim kit includes 6 foam spacer pads to fill the gap between the side case trims. For a finished appearance, a trim strip is provided to conceal the side case trim of the two products.

If you are installing into an enclosure, provide a 72" wide opening. If you are installing where the sides will be exposed, allow additional width for any side panels used.



- Apply foam spacer pads evenly to the side of one product as shown.
- Slide second product into position.
- Check to be sure both products are level. If they are not level, an obvious gap can be seen between the side trims. Adjust leveling legs if needed. Slight gaps will be concealed with the trim strip.
- Open both doors to access side trim.
- The U-shape trim will overlap the side case trim of both product.
- Set the top case trim (see page 13) to installation height.
- Hold U-shaped trim strip up against case trim as shown. Mark length with pencil at the point where U-shaped trim overhangs case trim at bottom.
- Mark length with a pencil.
- Trim excess length.
- Starting at the top, press U-shaped trim strip over case trims of both products.
- Continue pressing trim until you reach the bottom of the strip.



# ZUGSS Trim Kit

## Unified Stainless Steel Custom Grille Panel

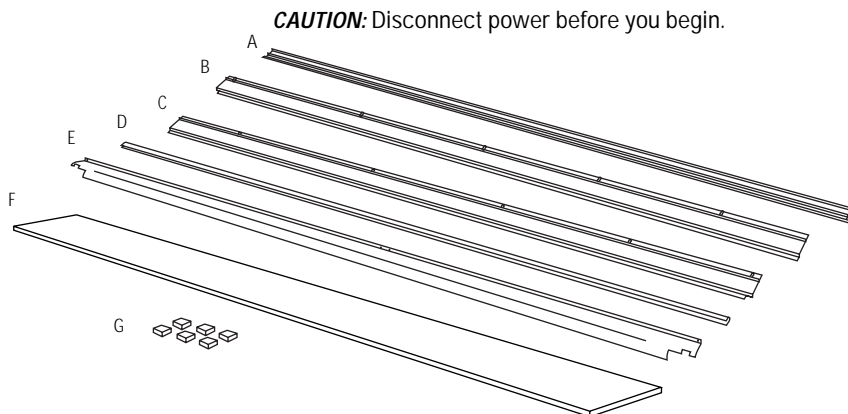
### Tools and materials

#### Required:

- #1 and #2 Phillips screwdrivers or sockets
- 1/4" angled wrench and 1-1/2" open ended wrench
- Drill and appropriate bits
- Custom grille panel
- Safety glasses
- Gloves to protect against sharp edges

#### Parts List:

- A. Soffit Vent Top
- B. Left Side Case Trim
- C. Right Side Case Trim
- D. Center U-Shape Trim
- E. Grill Base Wrap
- F. Stainless Steel Unified Panel
- G. Foam Spacer Pads



**Completion Time:** Allow approximately 3 hours to install this kit.

**IMPORTANT:** 2 People are required to install this kit.

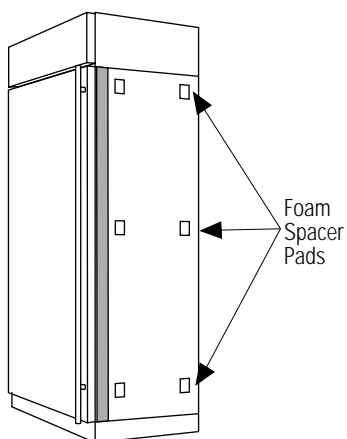
**CAUTION:** Disconnect power before you begin.

### Step 1 Install Spacer Pads, Replace Side Case Trims

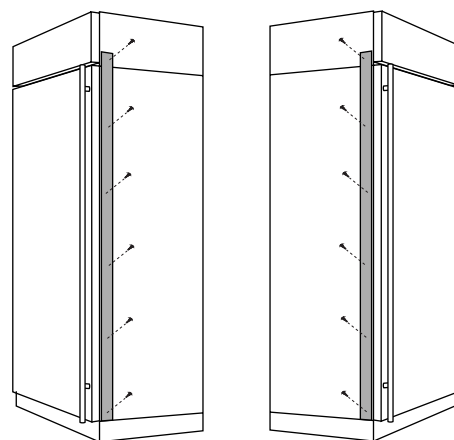
**CAUTION:** Handle parts with care to avoid scratching.

In a side by side installation, the inside case trim of both products will be removed and replaced with a shorter trim.

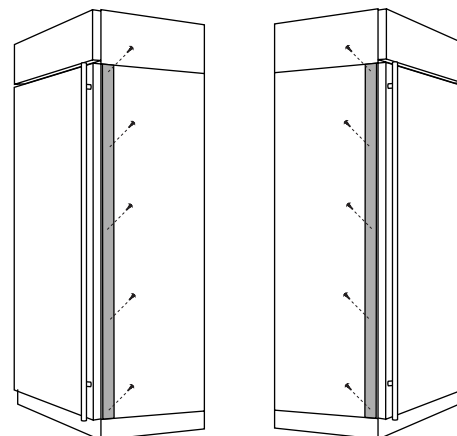
- Lift up to remove the supplied grille panel assembly on both products. Discard both assemblies.



- Apply the supplied foam spacer pads to the mating side of one product as shown.



- Remove the Phillips head screws from the inside case trim of each product as shown. Remove and discard side trim. Retain screws.



- Install new side case trim with notches towards the bottom. Install with original screws.

# ZUGSS Trim Kit

## Unified Stainless Steel Grille Panel

### Step 2 Install Anti-Tip Brackets



#### WARNING ANTI-TIP PRECAUTIONS

These products are heavy at the top and must be secured to prevent the possibility of tipping over.



#### ATTENTION

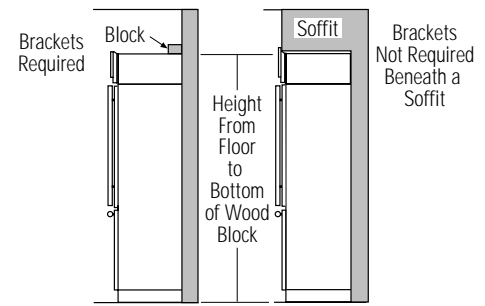
#### PRECAUTIONS CONTRE LES BASCULEMENTS

Le réfrigérateur est beaucoup plus lourd en haut et il faut le maintenir en place pour éviter la possibilité de son basculement vers l'avant.

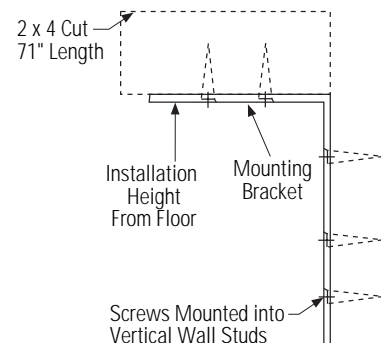
- Cut a 2"x4" block, 71" long. Secure the 2"x4" to the 4 mounting brackets provided using #12 or #14 wood screws.
- Secure the brackets with wood block to the back wall so that it is 84" (or your installation height) from the finished floor. Use #12 or #14 wood screws. See illustration.
- Screws must penetrate at least one inch into vertical wall studs.

#### Roll Both Products into Opening

- Gently push each product into opening with hands against front corners. Push back into the opening until it is flush or semi-flush with adjacent cabinets.



Side View

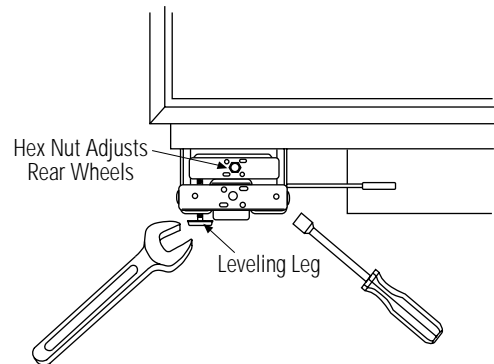


**Important Note:** When the products are installed under a soffit or if there is not enough height for this method of security, use Step 4 as an alternative. **The refrigerator and freezer must be secured to prevent tipping.**

### Step 3 Level Both Products

**Both products MUST BE LEVEL AND PLUMB with each other and adjacent cabinetry on each side.** Toekick heights should align with cabinetry.

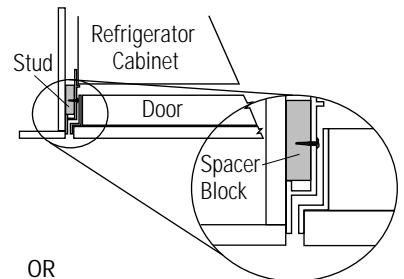
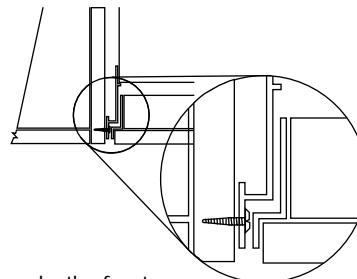
- Adjust carefully. Both models have 4-point leveling. The front is supported by leveling legs, the rear is supported by wheels.
- Raise units to the same level, aligning with adjacent toekick heights.
- Adjust rear wheels beneath the product to just barely touch the 2x4 block.
- Turn the 7/16" hex nut located above the front wheels to raise or lower the back of the refrigerator.
- To adjust the front leveling legs: Use a 1/4" angled wrench to turn the top of the leveling leg, or, turn the bottom of the legs with a 1-1/4" wrench.



**Units must be 1" apart and evenly aligned at top and bottom. The inside case trims must align, top and bottom.**

### Step 4 Secure Products To Sides

**Note:** This step can be used as an alternative to Step 2, Anti-Tip bracket installation, whenever brackets cannot be used. Whenever possible, perform this step for additional anti-tip security.



OR

When using 1/2" to 3/4" thick side panels, the front flange of the case trim is attached to the side panel.

- Open door to access case trim.
- Drill hole in trim slightly below the interior opening.
- Drive screw through the trim and into the side panel.
- Follow the same procedure on the opposite outside product trim.

If the product is installed between cabinets with no side panels or into a custom enclosure, install a spacer block as shown.

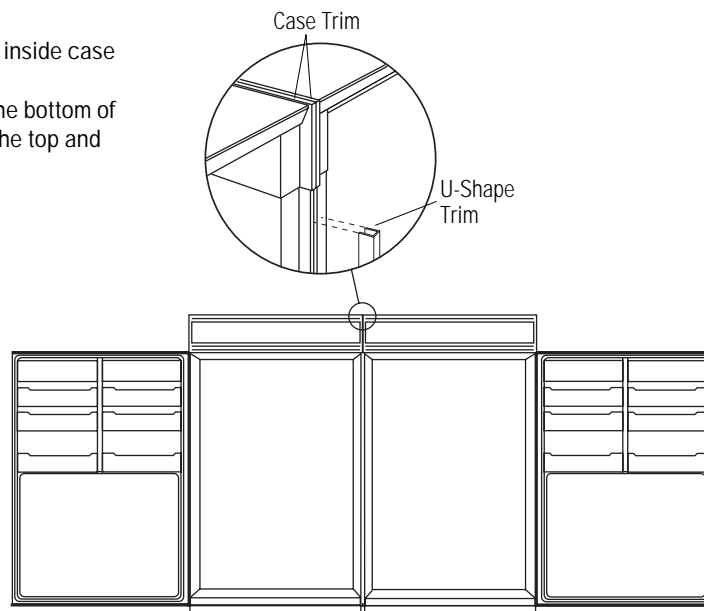


## ZUGSS Trim Kit

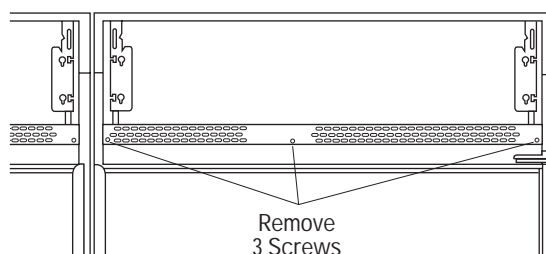
### *Unified Stainless Steel Grille Panel*

#### *Step 5 Install Center Trim Strip*

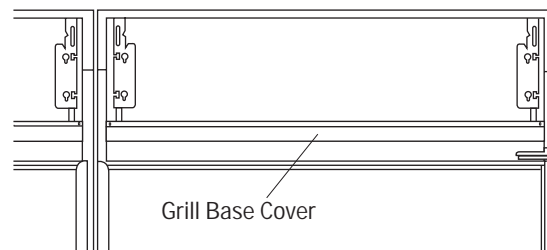
- Open doors fully.
- Starting at the top, press trim strip over inside case trims of both products.
- Continue pressing trim until you reach the bottom of the case trims. The trim will align with the top and bottom of the case trim.



#### *Step 6 Remove Wire Fence and Switch Cover*



- Remove 3 screws holding the wire fence on both products. Retain fences and all screws.



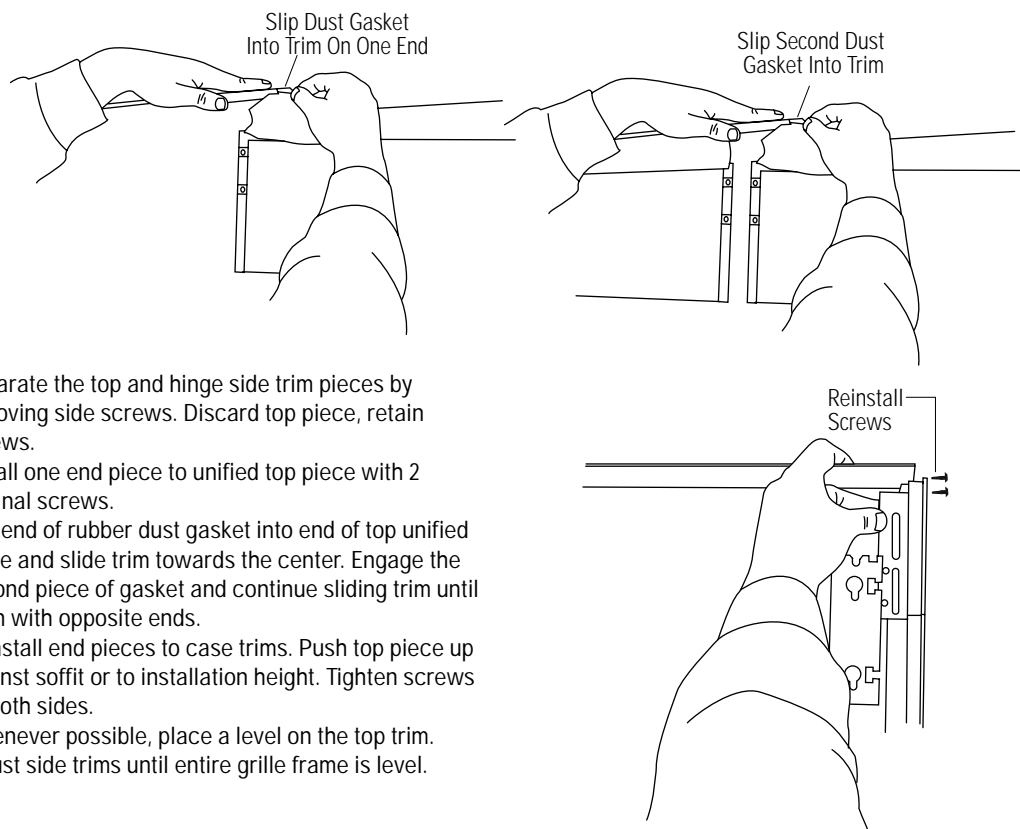
- Lift off grille base covers. Discard covers.



## ZUGSS Trim Kit

### *Unified Stainless Steel Grille Panel*

#### Step 9 Install Soffit Vent Top



- Separate the top and hinge side trim pieces by removing side screws. Discard top piece, retain screws.
- Install one end piece to unified top piece with 2 original screws.
- Slip end of rubber dust gasket into end of top unified piece and slide trim towards the center. Engage the second piece of gasket and continue sliding trim until even with opposite ends.
- Reinstall end pieces to case trims. Push top piece up against soffit or to installation height. Tighten screws on both sides.
- Whenever possible, place a level on the top trim. Adjust side trims until entire grille frame is level.

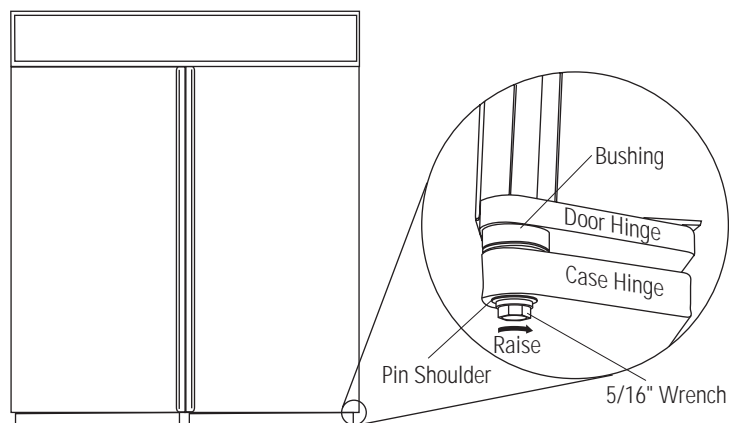
#### Step 10 Mount Unified Grille Panel

- Mount the unified grille panel by dropping into slots on the outside case trim.

## ZUGSS Trim Kit

### *Unified Stainless Steel Grille Panel*

#### Step 11 Adjust Door Alignment



Check door alignment. The top of the door should be parallel with the grille panel. If the door appears to be too high or too low on the handle side, adjustments can be made.

- Use a 5/16" wrench to turn the hinge.
- To raise the door, turn adjustable hinge pin towards the right.
- To lower the door, turn hinge pin towards the left.

---

---

---

**Note:** While performing installations described in this book, safety glasses or goggles should be worn.

***For Monogram® local service in your area, call 1-800-444-1845.***

**Note:** Product improvement is a continuing endeavor at General Electric. Therefore, materials, appearance and specifications are subject to change without notice.



**Monogram.®**  
*We bring good things to life.*