



8-port Gigabit Desktop Switch RC-410LX

User Manual



FCC STATEMENT

This equipment has been tested and found to comply with the limits for a Class B digital device, pursuant to part 15 of the FCC Rules.

These limits are designed to provide reasonable protection against harmful interference in a residential installation. This equipment generates, uses and can radiate radio frequency energy and, if not installed and used in accordance with the instructions, may cause harmful interference to radio communications. However, there is no guarantee that interference will not occur in a particular installation. If this equipment does cause harmful interference to radio or television reception, which can be determined by turning the equipment off and on, the user is encouraged to try to correct the interference by one or more of the following measures:

- Reorient or relocate the receiving antenna.
- Increase the separation between the equipment and receiver.
- Connect the equipment into an outlet on a circuit different from that to which the receiver is connected.
- Consult the dealer or an experienced radio/ TV technician for help.

This device complies with part 15 of the FCC Rules. Operation is subject to the following two conditions:

- 1) This device may not cause harmful interference.
- 2) This device must accept any interference received, including interference that may cause undesired operation.

Any changes or modifications not expressly approved by the party responsible for compliance could void the user's authority to operate the equipment.

CE Mark Warning

This is a class B product. In a domestic environment, this product may cause radio interference, in which case the user may be required to take adequate measures.

Before We Begin

Thank you for purchasing this product, we would like to use this manual to help you know more about your products.

COPYRIGHT & TRADEMARKS

Specifications are subject to change without notice.



is a registered trademark of ROSEWILL INC. Other brands and product names are trademarks or registered trademarks of their respective holders. No part of the specifications may be reproduced in any form or by any means or used to make any derivative such as translation, transformation, or adaptation without permission from ROSEWILL INC.

Copyright © 2009 ROSEWILL INC.

All rights reserved.

<http://www.rosewill.com>

Special Icons that needs your attention:



NOTE: This mark indicates that there is a note of interest or something you need to pay special attention to.



WARNING: This mark indicates warning or caution that there might be something can damage your device or property.

Package Contents

The following items should be found in your package:

- One RC-410LX 8-port Gigabit Desktop Switch
- One Power Adapter for RC-410LX 8-port Gigabit Desktop Switch
- This User Guide

Note:

Make sure that the package contains the above items. If any of the listed items are damaged or missing, please contact with your distributor.

Safety Notices



Cautions:

Do not use this product near water, for example, in a wet basement or near a swimming pool.

Avoid using this product during an electrical storm. There may be a remote risk of electric shock from lightning.

Convention

The Switch or RC-410LX mentioned in this User Guide stands for RC-410LX 8-port Gigabit Desktop Switch without any explanation.

Chapter 1 Introduction of the Product

Thank you for choosing the RC-410LX 8-port Gigabit Desktop Switch.

■ Overview of the Product

Powered by the Gigabit Ethernet Technology, the RC-410LX 8-port Gigabit Desktop Switch provides the seamless network connection, which can speed up your old network to 1000Mbps. The increased speed and backbone connections make Gigabit a reality, which ensures the graphics, CGI, CAD, or multimedia files and other applications with bandwidth-intensive files transferred across the network almost instantly.

The non-blocking switching architecture adopted in the RC-410LX greatly improves network response times as well as significantly speed up the traffic between subnets by forwarding and filtering packets at full wire-speed for maximum throughput.

The RC-410LX switch is compatible with all 10Mbps, 100Mbps, and 1000Mbps Ethernet devices, which can protect your existing network investments while provide you a straightforward migration path to faster Gigabit speed.

The RC-410LX switch is very easy to manage since it is plug-and-play and no configuration is needed. In addition, the auto MDI/MDI-X cable detection on all ports eliminates the demand of crossover cable or Uplink port. Each port can be used as general ports or Uplink ports, and any port can be simply plugged into a server, a hub, a router or a switch, using the straight cable or crossover cable. Diagnostic LEDs which display link status and activity, allowing you to quickly detect and correct problems on the network.

The RC-410LX switch adopts Green Ethernet technology, supports power saving features to help make your network environmentally friendly without compromising performance. The switch automatically powers down ports that have no link, budgets power output for different Ethernet cable lengths.

■ Features

- Supports Green Ethernet technology to implement power saving features
- Complies with IEEE802.3, IEEE802.3u, IEEE802.3ab standards
- Eight 10/100/1000Mbps Auto-Sensing RJ45 ports supporting Auto-MDI/MDIX
- Supports IEEE802.3x flow control for Full-duplex Mode and backpressure for Half-duplex Mode
- Non-blocking switching architecture that forwards and filters packets at full wire-speed for maximum throughput
- 4K entry MAC address table of the RC-410LX with auto-learning and auto-aging
- Supports for Jumbo frames of up to 9KB
- LED indicators for monitoring power, link, speed and activity
- External power adapter supply

Chapter 2 Installation

■ Mounting the Switch on a Desk

To install the Switch, please follow the steps:

- 1 You can place the Switch on a flat desk.
- 2 Please inspect the Power Adapter carefully and make sure that it is properly connected to a power source.
- 3 Ensure adequate ventilation space around the switch for dissipating heat and air.

Note:

Please avoid any heavy thing placed on the switch.

■ Power On

RC-410LX 8-port Gigabit Desktop Switch can be used with DC power supply. Powering on the Switch, it will automatically initialize and its LED indicators will respond as follows:

Name	Time	Status	Indication
Power	All the time	On	Power on
LEDs (port 1-8)	1st-3rd second	Off	N/A
	4th-6th second	On (yellow)	No device connected to the corresponding port.
		On (green)	There is a 10/100/1000Mbps device connected to the corresponding port.
	7th second ~	Off	No device connected to the corresponding port.
		On (yellow)	There is a 10/100Mbps device connected to the corresponding port.
		On (green)	There is a 1000Mbps device connected to the corresponding port

Note:

If the LED indicators don't respond as described above, please check the power supply and its connection.

Chapter 3 Identifying External Components

This Chapter describes the front panel, rear panel and LED indicators of the Switch.

■ Front Panel

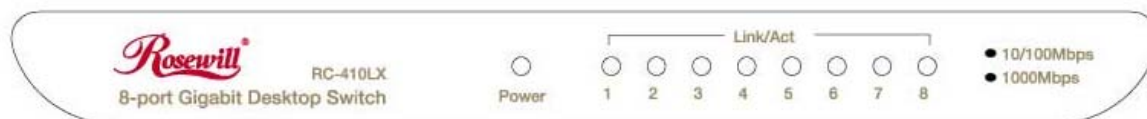


Figure 3-1 RC-410LX Switch Front Panel

The Switch's LEDs are located on the front panel (View from left to right).

Name	Status	Indication
Power	On (green)	Power on
	Off	Power off
1000Mbps	On (green)	There is a 1000Mbps device connected to the corresponding port.
	Flashing (green)	Data transmitting or receiving on corresponding port.
	Off	No 1000Mbps device connected to the corresponding port.
10/100Mbps	On (yellow)	There is a 10/100Mbps device connected to the corresponding port.
	Flashing (yellow)	Data transmitting or receiving on corresponding port.
	Off	No 10/100Mbps device connected to the corresponding port.

Note:

The LEDs' description above explains the device's working status after initialization.

■ Rear Panel

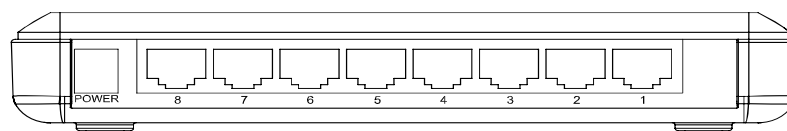


Figure 3-2 RC-410LX Switch Rear Panel

The following parts are located on the rear panel (View from left to right).

- **POWER:** The POWER socket is where you will connect the power adapter. Please use the power adapter provided with this RC-410LX Switch.
- **Port (1-8):** The RC-410LX Switch is equipped with 8 x 10/100/1000M RJ45 ports where you will connect your network devices. The working status can be indicated by the corresponding LEDs on the front panel.

Appendix A: Specifications

General	
Standards	IEEE802.3, IEEE802.3u, IEEE802.3ab
Topology	Star
Protocol	CSMA/CD
Data Transfer Rate	Ethernet: 10Mbps (Half Duplex), 20Mbps (Full Duplex)
	Fast Ethernet: 100Mbps (Half Duplex), 200Mbps (Full Duplex)
	Gigabit Ethernet: 2000Mbps (Full Duplex)
Network Media(Cable)	10Base-T: UTP category 3, 4, 5 cable (maximum 100m) EIA/TIA-568 100 Ω STP (maximum 100m)
	100Base-TX: UTP category 5, 5e cable (maximum 100m) EIA/TIA-568 100 Ω STP (maximum 100m)
	1000Base-TX: UTP category 5 cable (maximum 100m) EIA/TIA-568 100 Ω STP (maximum 100m)
Number of Ports	8 x 10/100/1000M RJ45 ports
LED indicators	Power, 10/100/1000Mbps Link/Act
Transfer Method	Store-and-Forward
MAC Address Learning	Automatically learning, automatically aging
Frame Filter Rate	10Base-T: 14880pps/Port
	100Base-Tx: 148800pps/Port
	1000Base-T: 1488000pps/Port
Frame Forward Rate	10Base-T: 14880pps/Port
	100Base-Tx: 148800pps/Port
	1000Base-T: 1488000pps/Port

Environmental and Physical	
Operating Temperature	0°C~40°C (32°F~104°F)
Storage Temperature	-40°C~70°C (-40°F~158°F)
Operating Humidity	10%~90% non-condensing
Storage Humidity	5%~90% non-condensing

Appendix B: Troubleshooting

1. The Power LED is not lit

Check to see if the DC power cord is connected to the Switch properly, and make sure the power source is ON.

2. The Link/Act LED is not lit when a device is connected to the corresponding port

Check to see if the cable connectors are firmly plugged into the Switch and the device, and verify the connected device is turned on and working well. Make sure the cable is not longer than 100 meters (328feet).

Thank you for purchasing a quality Rosewill Product.

Please register your product at: www.rosewill.com for complete warranty information and future support for your product.

Support: techsupport@rosewill.com