

# **nero**

## **((((WAVE EDITOR 2)))**

## **Information on copyright and trade marks**

The **Nero Wave Editor** user manual and all its contents are protected by copyright and are the property of Nero AG. All rights reserved. This user manual contains material that is protected by internationally valid copyright. This manual may not - in whole or in part - be copied, transmitted or otherwise reproduced without the express written permission of Nero AG.

All trade names and trademarks are the property of the respective owners.

Nero AG rejects any claims that transcend the legal guarantee rights. Nero AG does not undertake any liability for the correctness of the content of the **Nero Wave Editor** user manual. The contents of the software supplied, as well as of the **Nero Wave Editor** user manual, may be changed without prior warning.

The trademarks mentioned here are only listed for information purposes.

Copyright © 2003-2005 Nero AG  
REV 1.2

# Contents

<b>1</b>	<b>Instructions in brief</b> .....	<b>5</b>
1.1	What's new in Nero Wave Editor? .....	5
1.2	Introduction .....	6
1.3	How this information is organized .....	6
1.4	Notes for the user .....	6
1.5	Important terms.....	7
<b>2</b>	<b>About Nero Wave Editor</b> .....	<b>8</b>
2.1	Introduction .....	8
2.2	Structure of the program.....	8
2.2.1	Workspace .....	9
<b>3</b>	<b>Settings</b> .....	<b>10</b>
3.1	Selecting the input and output devices .....	10
3.2	Setting the editor options.....	10
3.2.1	Setting the display features.....	11
3.2.2	Specifying the directories used .....	12
3.2.3	Audio output .....	13
3.2.4	VST Plug-ins .....	14
<b>4</b>	<b>View</b> .....	<b>15</b>
4.1	Specifying the view.....	15
4.2	How the audio files can be represented .....	16
4.3	Zooming .....	17
4.3.1	Vertical zoom .....	17
4.3.2	Horizontal zoom .....	18
<b>5</b>	<b>Audio files</b> .....	<b>19</b>
5.1	Loading and playing back audio files .....	19
5.2	Selecting sections of audio files .....	20
5.2.1	Saving the selection as a new audio file .....	21
5.3	Inserting an audio file .....	21
5.4	Recording a new audio file.....	22
5.5	Converting an audio file .....	23
5.6	Editing audio files .....	25
5.6.1	Muting .....	25
5.6.2	Normalization .....	25
5.6.3	Changing volume .....	26
5.6.4	Fading in and out .....	27

<b>6</b>	<b>Recording gramophone records</b> .....	<b>28</b>
	6.1 Preparation .....	28
	6.2 Recording .....	29
<b>7</b>	<b>Effects</b> .....	<b>31</b>
	7.1 Introduction .....	31
	7.1.1 Saving the effect settings .....	31
	7.1.2 Loading the effect settings .....	32
	7.1.3 Deleting the effect settings.....	32
	7.2 Equalizer .....	33
	7.3 Transposing.....	34
	7.4 Dynamics .....	35
	7.5 Time correction .....	36
	7.6 Delay.....	37
	7.7 Flanger .....	37
	7.8 Chorus.....	38
	7.9 Reverberation .....	40
	7.10 Wah-Wah.....	41
	7.11 Phaser .....	42
	7.12 Voice modification .....	43
	7.13 Pitch tuning .....	44
	7.14 Karaoke filter .....	45
<b>8</b>	<b>Enhancement</b> .....	<b>46</b>
	8.1 Introduction .....	46
	8.2 Band extrapolation.....	46
	8.3 DC Offset Correction .....	47
	8.4 Filter toolbox .....	47
	8.5 Declicker .....	48
	8.6 Noise Reduction.....	49
	8.7 Noise Analysis.....	50
<b>9</b>	<b>Contact</b> .....	<b>52</b>
<b>10</b>	<b>Index</b> .....	<b>53</b>

# 1 Instructions in brief

---

## 1.1 What's new in Nero Wave Editor?

In comparison with the first version of the software, **Nero Wave Editor** has a number of new and enhanced features, such as support for DirectX and VST plug-ins. In addition, an overview of the existing processing steps allows you to return quickly to any stage of the process, and crossfading allows you to create professional recordings without pauses and hissing noises. The high quality Declicker which suppresses the individual hissing and clicking noises from records and the Decrackler which removes constant background crackling are just two of the great new features.

Of course, **Nero Wave Editor** is non-destructive, which means that the original file is not modified. As well as protecting the original file, this also speeds up the work, as the changes do not need to be saved individually and are implemented in real time. You only save your new audio file once you are happy with the results of your editing. If **Nero Wave Editor** should crash before you have saved your file, you can use the crash restore function to restore the most recent version of your work when you restart the program.

Another new feature is the automatic separation of tracks which can then be stored in new files.

Nero Audio Plug-in-Manager 6.0 reads and writes files in the following formats: 'wav', 'mp3', 'wma' and 'aiff'. You need an additional license to be able to create an unlimited number of MP3 files, which you can obtain from Nero AG.

**Nero Wave Editor's** new effects include a wah-wah filter (a bandpass filter which allows the center frequency to be changed over time), a phaser which allows a signal to be combined with a phase-shifted version of itself, voice modification with which you can modify vocals to create interesting results and pitch tuning, which corrects the intonation of vocal or instrumental recordings.

Another new feature is band extrapolation, which makes old and dull sounding recordings seem fresher by generating high frequencies and corresponding basses to extend the frequency spectrum. Band extrapolation can also be used to improve MP3 recordings with a very low bit rate. Using the filter toolbox allows interference frequencies can be filtered out. The Karaoke filter removes the human voice from stereo recordings in which the voice has been mixed in the center of the stereo field, which allows the original song to be saved without the vocals. With the stereo processor the stereo field can be corrected and the stereo effect artificially amplified.

---

## 1.2 Introduction

These brief instructions are aimed at putting you in the position where you can quickly create your own audio files or to edit existing ones. Because this is a sizeable and powerful program, only the main points are dealt with here and some parts of the program are not explained in detail (or at all).

You can find more detailed information on **Nero Wave Editor** in the online help feature that you can call up at any time (press the F1 key). You can also find the latest information on **Nero Wave Editor** at the [www.nero.com](http://www.nero.com) Internet site.

---

## 1.3 How this information is organized

These instructions contain practical examples of how to create and edit audio files as well as details for reference.

The individual sections offer the following information:

Section 1 explains how the manual is organized and the symbols used.

Section 2 introduces **Nero Wave Editor** and its features and describes the structure of the program.

Section 3 explains how you can set the input and output device and specify the different program options.

Section 4 describes, how you can change the appearance of **Nero Wave Editor** and work with the zoom function.

Section 5 shows how you can easily work with audio files including editing them.

Section 6 explains, how analog gramophone recordings can be saved as digital audio files.

Section 7 shows you how to alter audio files by using special effects.

Section 8 shows you how to alter the sound of audio files by optimization.

Section 9 helps you find the Information you need with the aid of the index.

---

## 1.4 Notes for the user

The following symbols are used in these instructions:



This symbol stands for 'warning' or 'danger'.  
Hints that bear this symbol are very important and the program may behave incorrectly if you ignore them.



This symbol stands for 'useful tip' or 'worth knowing'.  
Information marked this way is important and instructive.

---

## 1.5 Important terms

A number of important terms relating to audio files are explained below. The choice of sampling rate and bit depth has a significant influence on the quality of the recording.

Bit depth /  
resolution

In principle, audio data is made up of periodic vibrations, which can be illustrated by a curve. The resolution shows exactly how the sampling value of a curve should be determined. The higher the resolution, the more exactly this can be done.

Sampling rate

The sampling rate indicates how often an analog-digital converter determines the sample value from an analog signal. This is measured in sample values per second (Hertz, often abbreviated as Hz). In this case it is also true that the higher the sampling rate, the more accurate the results.

# 2 About Nero Wave Editor

---

## 2.1 Introduction

**Nero Wave Editor** is a user-friendly program for editing and recording audio files, which may be of the 'wav', 'mp3' or 'aiff' format. The other types of format that can also be read by **Nero Wave Editor** depend on the plug-ins that have been installed.

Individual audio-files can be created quickly and easily using the various filters and sound optimization methods.

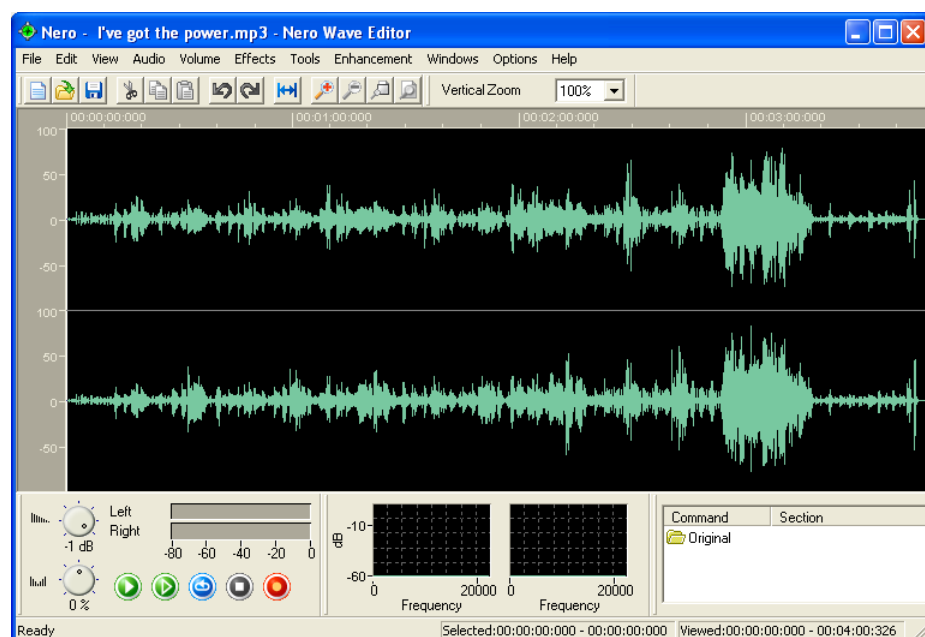
**Nero Wave Editor** is started by: Start > Programs > Nero > Nero 6 > Nero Wave Editor.

---

## 2.2 Structure of the program

**Nero Wave Editor's** structure corresponds to that of the usual Windows elements: a menu bar, various toolbars and a status bar. The **Nero Wave Editor** workspace shows the selected audio file.

The individual elements of the window are arranged clearly and understandably, making **Nero Wave Editor** very easy to use.

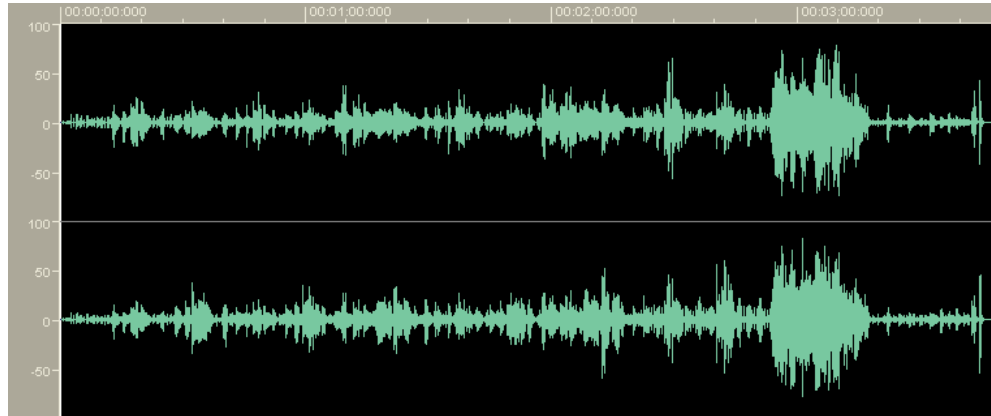




## 2.2.1 Workspace

The **Nero Wave Editor** workspace comprises three separate elements: the 'Sound Display', the 'Level Meter' and 'Spectrum Analyzer'.

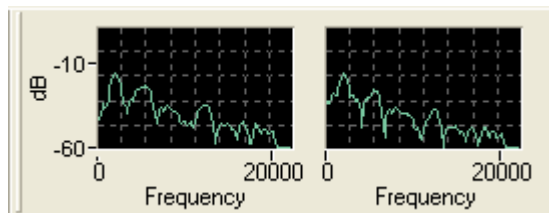
The 'Sound Display' shows a graphic image of the audio file that is currently open.



The 'Level Meter' regulates how the open audio file is played.



The 'Spectrum Analyzer' displays the bandwidth of the open audio file (in decibels - dB).



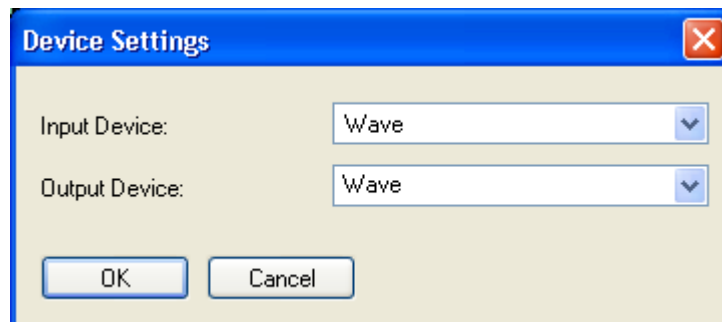
# 3 Settings

---

## 3.1 Selecting the input and output devices

To be able to record and reproduce audio files, a soundcard is needed. If a number of components that can play audio files have been installed, select the desired device.

1. In the 'Options' menu, select the 'Device Settings' command. The standard devices set in the control panel will be selected.



If you wish to specify another device, click on the corresponding dropdown button and highlight the desired device.

2. Click on the 'OK' button to save the devices chosen.

---

## 3.2 Setting the editor options

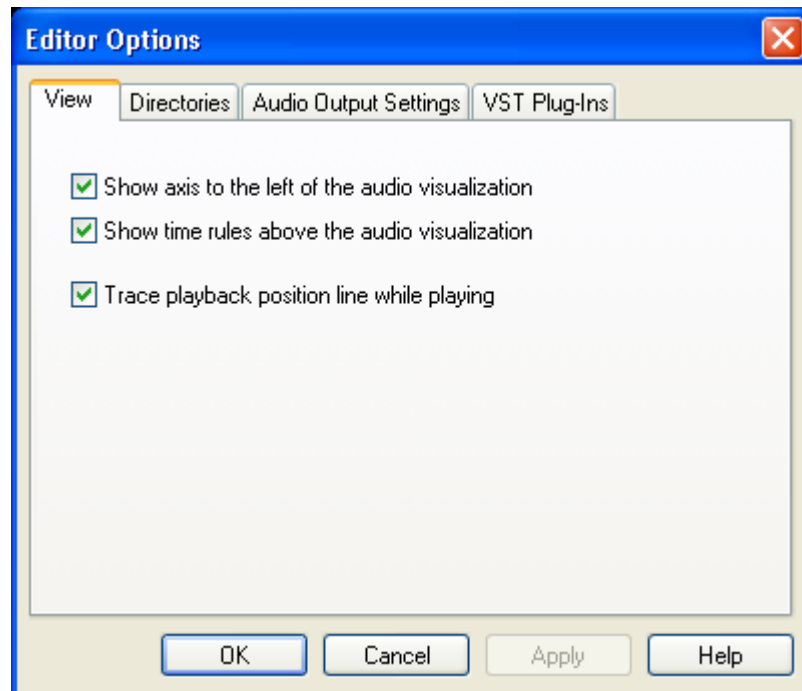
A number of various general 'Editor Options' can be configured. This area comprises four 'tab' (index) cards. By clicking with the mouse you can bring one of the index cards to the forefront and edit the settings.

Click on the 'OK' button to save the and close the dialog. 'Cancel' closes the dialog without saving the changes. 'Apply' saves the changes, though without closing the dialog so that additional changes can be made to the settings on other index cards. 'Help' starts the online help feature.

### 3.2.1 Setting the display features

The display options for the sound display can be changed on this index card.

1. In the 'Options' menu, select the 'Editor Options' command.

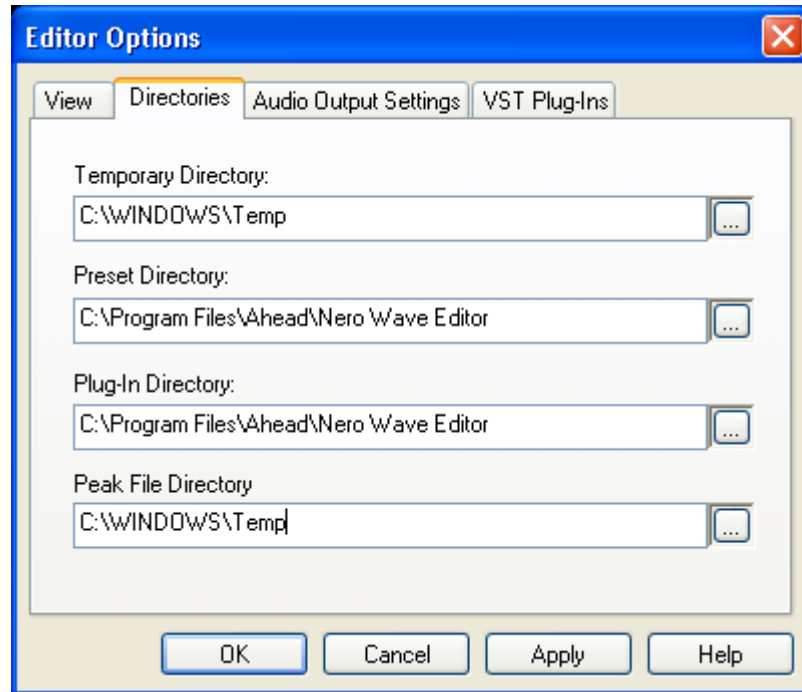



2. Click on the 'View' index card and specify whether the following control fields should be activated or disabled:
  - Show axis to the left of the audio visualization
  - Show time rules above the audio visualization
  - Always keep the playback position in the window whilst playing

### 3.2.2 Specifying the directories used

The directories relevant for **Nero Wave Editor** can be specified on this index card.

1. In the 'Options' menu, select the 'Editor Options' command.

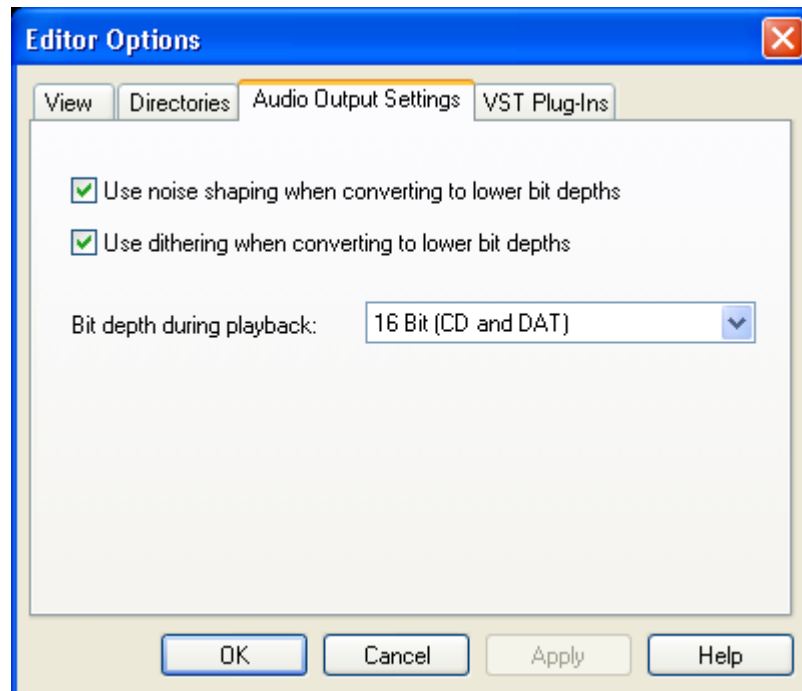


2. Click on the 'Directories' index card and specify:
  - The directory for the intermediate storage of the temporary files
  - The directory in which the presettings are located
  - The directory in which the plug-in files are locatedby clicking on the  button and selecting the appropriate directory.

### 3.2.3 Audio output

The settings for audio output can be specified on this index card.

1. In the 'Options' menu, select the 'Editor Options' command.



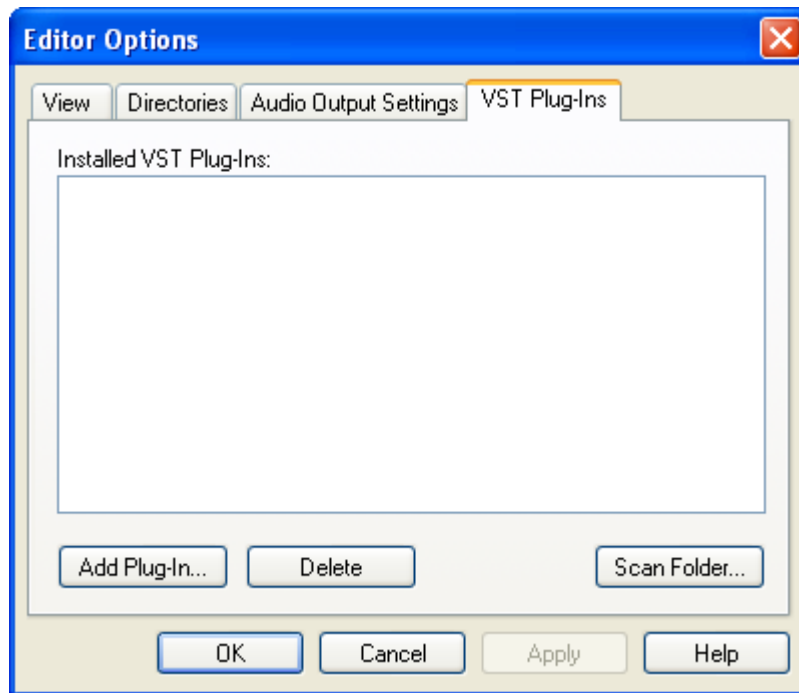
2. Click on the 'Audio Output Settings' index card and specify whether the following control fields should be activated or disabled:
  - Use noise shaping when converting to lower bit depths
  - Use dithering when converting to lower bit depths
  - Specify the bit resolution on the dropdown button and highlight the number of bits wanted.



Dithering and noise shaping are used to minimize noise disturbance at low resolutions. Noise shaping shifts the disturbance to bandwidths that the human ear cannot hear particularly well. Dithering adds a quiet noise signal so that there is no longer any correlation between the desired signal and the noise signal causing the disturbance.

### 3.2.4 VST Plug-ins

On the 'VST Plug-ins' tab you will see the installed VST Plug-ins, if available.



To add VST-Plug-ins click on the 'Add Plug-in' button, select the directory containing the plug-in, highlight and click on the 'Open' button.

To delete a VST-Plug-in, highlight the unwanted plug-in and click on the 'Delete' button.

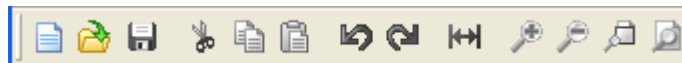
# 4 View

## 4.1 Specifying the view

The nature of the **Nero Wave Editor** display can be altered using the 'View' menu.

Selecting (check mark in front of the command) of the respective command will open the corresponding **Nero Wave Editor** element. Disabling this command (no check mark before the command) will ensure that the element concerned is not displayed.

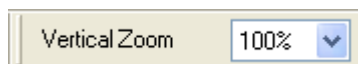
### Standard toolbar



### Level meters



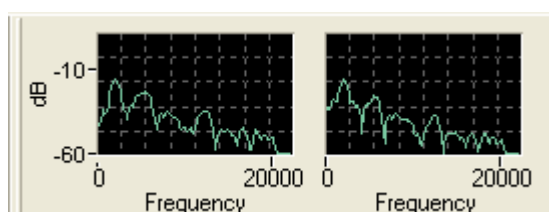
### Vertical zoom bar



### Status bar

Ready Selected:00:00:00:000 - 00:00:00:000 Viewed:00:00:00:000 - 00:04:00:326

### Spectrum analyzer

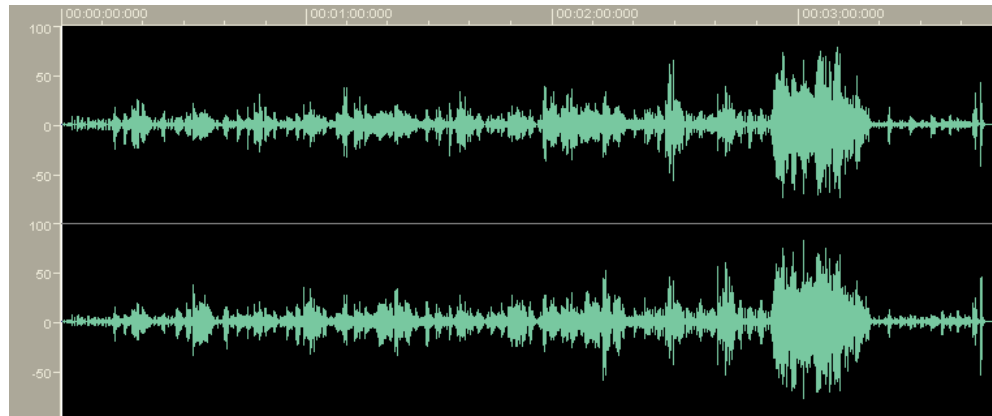


---

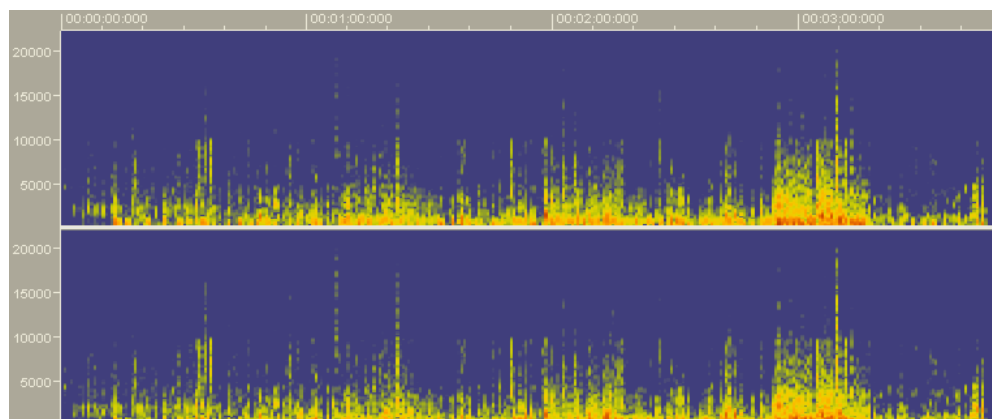
## 4.2 How the audio files can be represented

There are three different ways of displaying audio files. You can change them at any time.

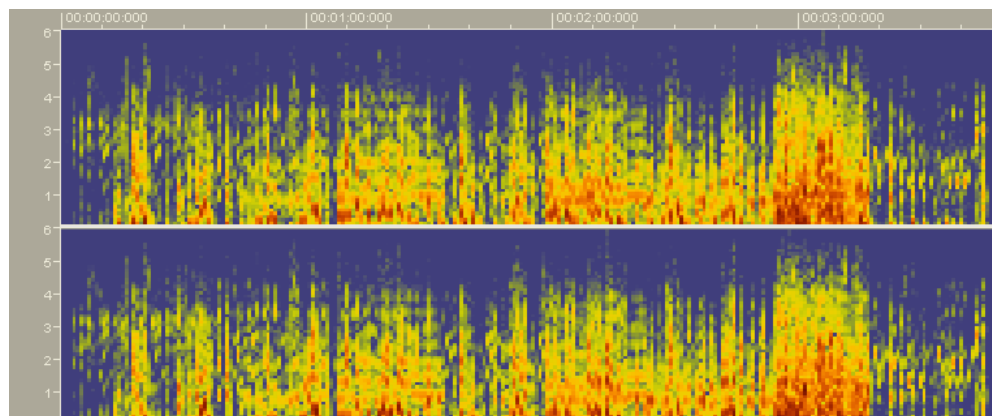
### Wave display



### Spectrogram display



### Wavelet display





---

## 4.3 Zooming

With **Nero Wave Editor**, audio files can be both horizontally and vertically zoomed, so that special parts of the audio files or marked elements within them can be viewed in more detail.

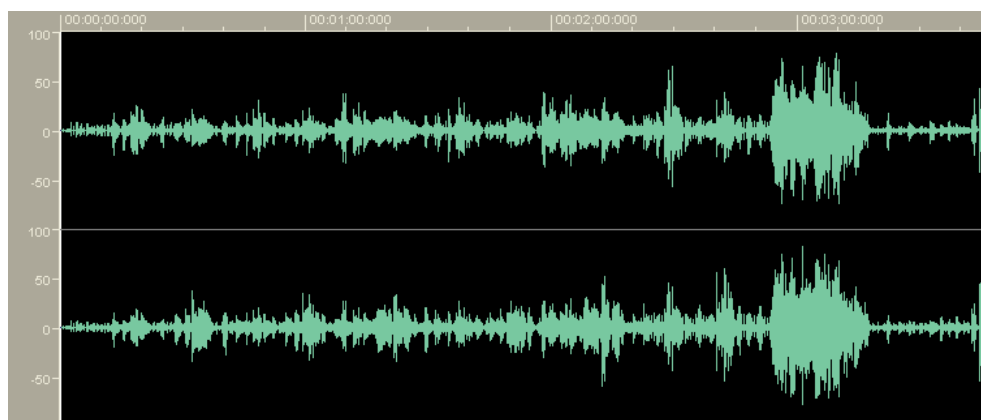
### 4.3.1 Vertical zoom

The vertical zoom determines the height of the curve progression displayed and can be changed by selecting the desired zoom setting.

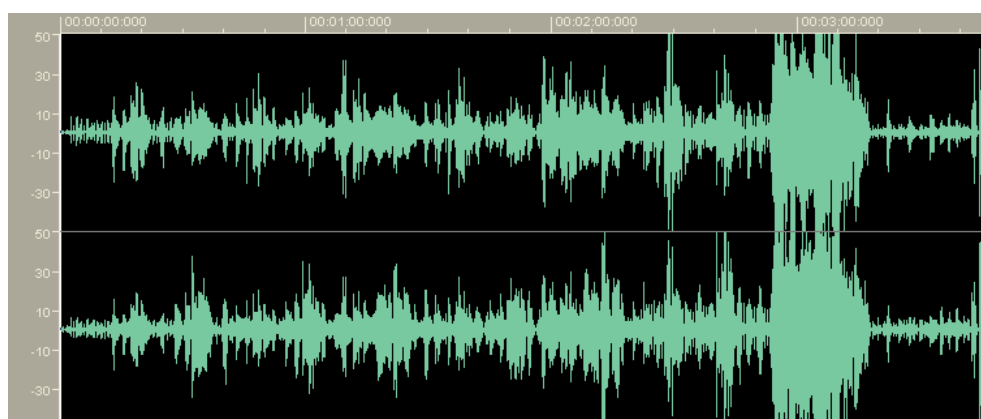


The vertical zoom setting can only be changed if the vertical zoom bar is displayed. If it is not visible, it can be displayed via the 'View' menu and the 'vertical zoom bar' command.

The following example shows the 100% zoom, i.e. levels from  $-100\%$  to  $+100\%$  of the maximum levels.



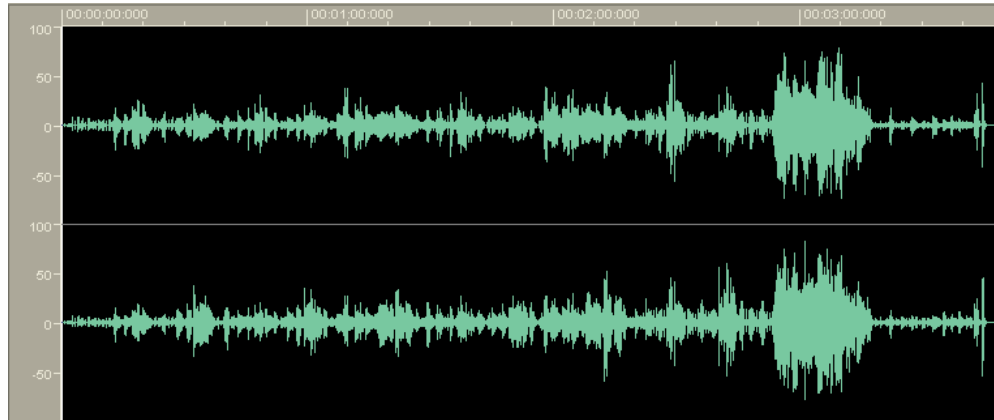
Selecting the 200% zoom reduces the displayed levels to  $-50\%$  to  $+50\%$  of the maximum levels.




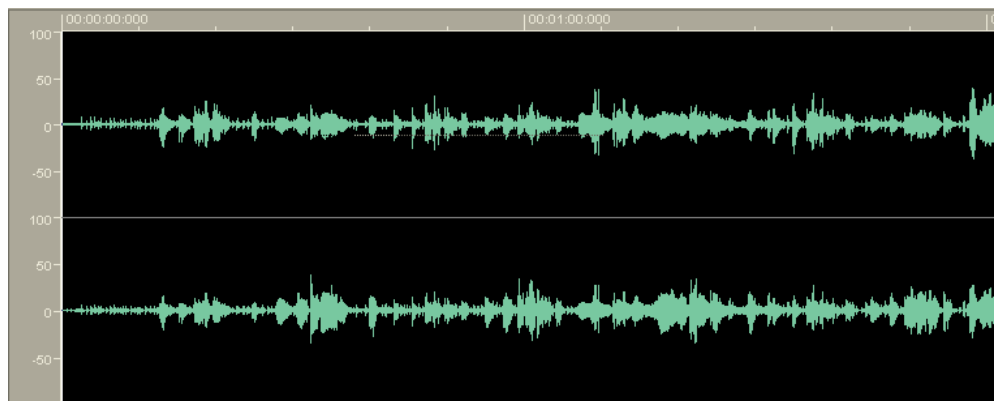
### 4.3.2 Horizontal zoom

The horizontal zoom determines the size of the audio file that is visible in the audio display. The size of the zoom determines how accurately the curve progression can be recognized. It can be set using the appropriate button on the standard menu bar (or via the 'View' menu).

The following example shows a complete audio file.



Click on the button  to zoom in on the section.

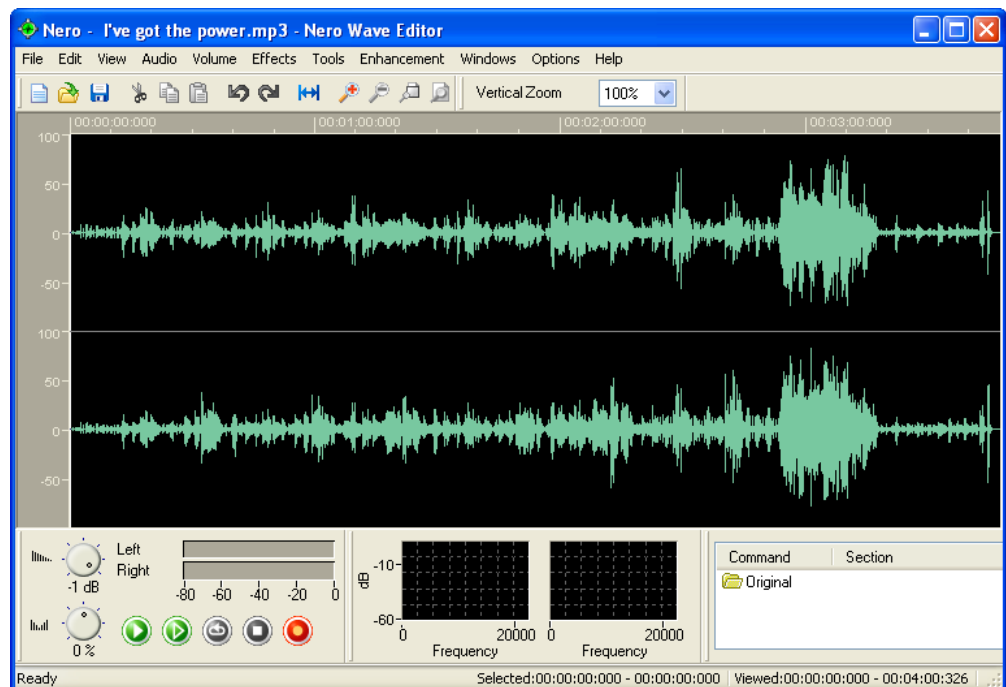



# 5 Audio files

## 5.1 Loading and playing back audio files

Stored audio data can be quickly and easily loaded and played back.

1. In the 'File' menu select the command 'Open', highlight the audio file you require and click on the 'Open' button.



2. Click on the button  to play the whole audio file. While playing, the level meter will graphically display the level control for the left and right-hand audio channels.



Parallel to this, the current playback time appears in the lower border of the window.

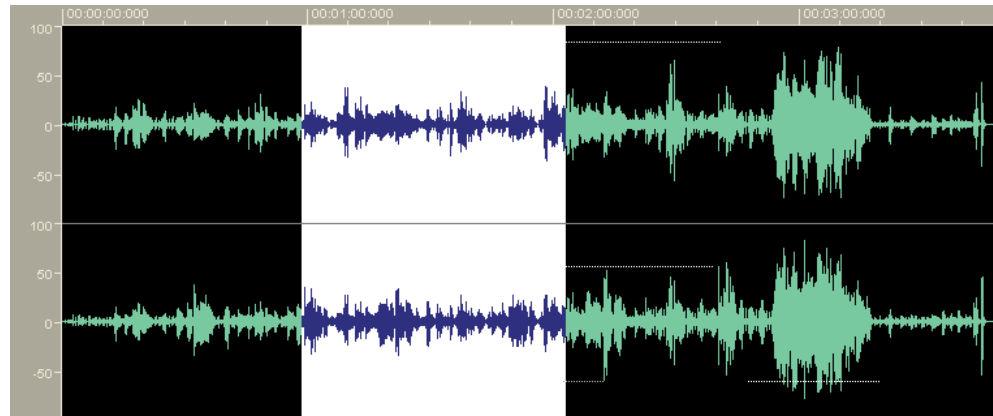
Playing - 00:00:18:617

---

## 5.2 Selecting sections of audio files


With **Nero Wave Editor**, you can quickly and easily select a specific section of an audio file.

1. Open an audio file.
2. With the mouse, click in the 'Wave' section on the point that is to mark the beginning of the selection and (keeping the mouse button pressed) drag the mouse to the right until you have marked the section you want. Then release your finger from the mouse button. The section selected is now highlighted in white.



The exact times of the selected section can now be seen in the status bar.

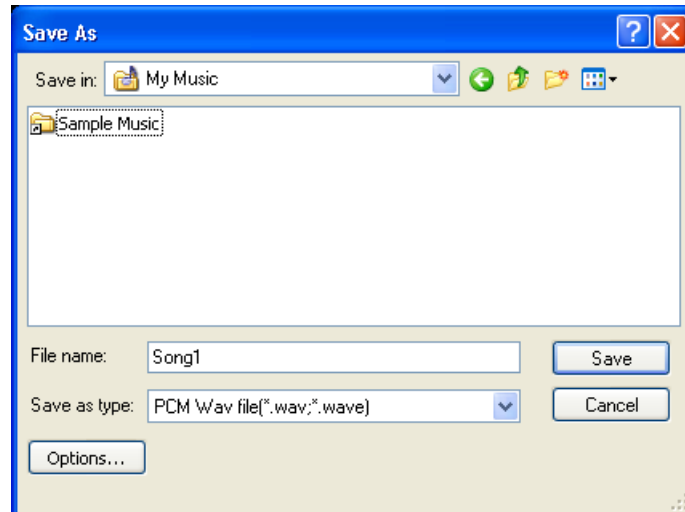
Selected:00:01:01:759 - 00:02:10:232

3. Click on the button  to play the selected section of the audio file. While playing, the level meter will graphically display the level control for the left and right-hand audio channels.
4. Click on the gray area to the left of the 'Wave' window to revoke the selection.

## 5.2.1 Saving the selection as a new audio file

A selection within an audio file can be saved as a new file.

1. Open an audio file and highlight the section you want.
2. In the 'Edit' menu, select the 'Copy to File' command.
3. In the window that now opens, enter the name of your choice in the 'File name' field and click on the 'Save' button.

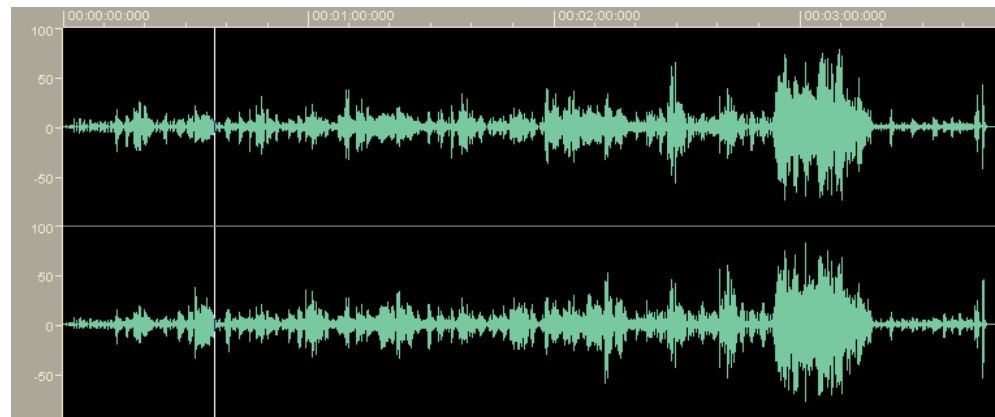


---

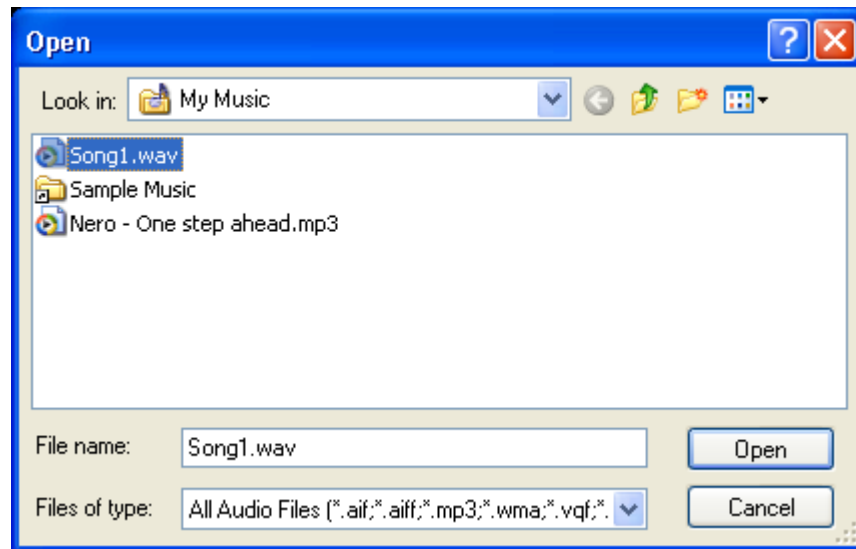
## 5.3 Inserting an audio file

A saved audio file can also be inserted in an existing file.

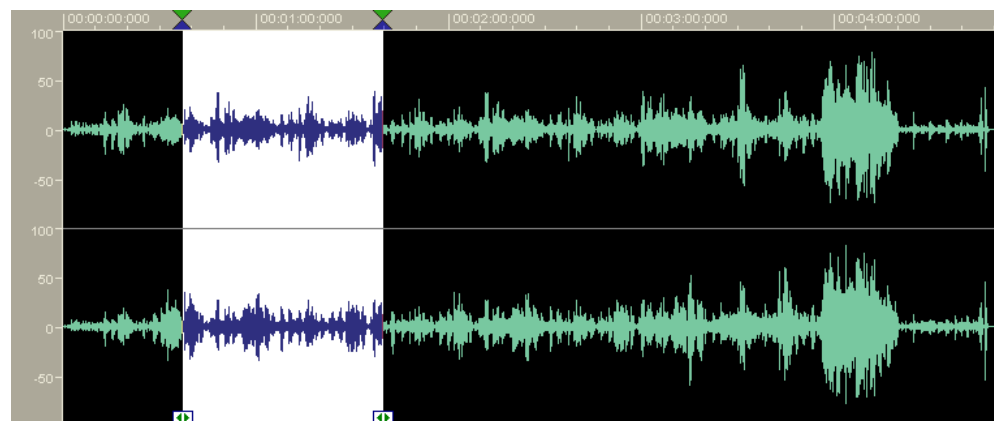
1. Open an audio file and mark the position where the other audio file is to be inserted.



2. In the 'Edit' menu, select the command 'Insert File', highlight the file you require and click on the 'Open' button.



The file will then be inserted and appears in the opened one as a marked selection.

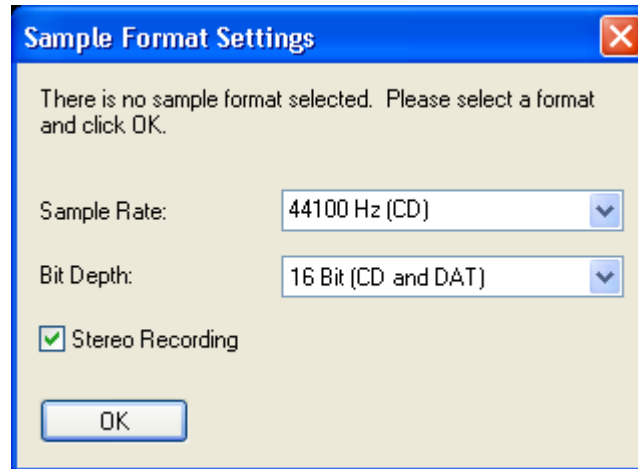


## 5.4 Recording a new audio file

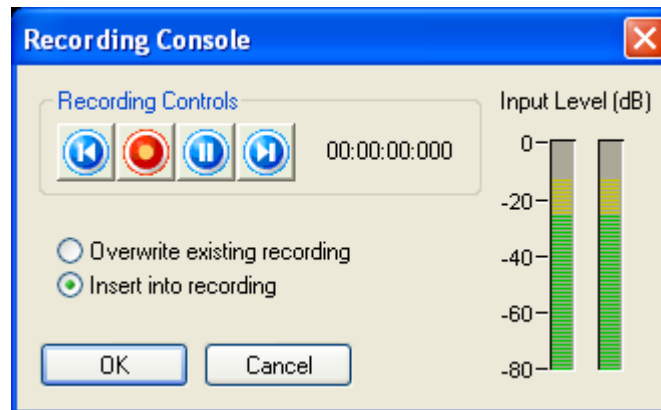
Using the **Nero Wave Editor**, you can record your own audio files from a sound source (line-in, microphone or CD audio). One particular reason for (re)recording audio files is to capture the sound of vinyl records. You can then use this new recording to make an audio CD with the aid of Nero. In the section 'Recording gramophone records', you can find more detailed information on how to record tracks from a phonograph record.


1. In the 'File' menu, select the 'New' command.  
If a file has been edited, you will be queried as to whether you wish to save the changes.

2. In the 'Audio' menu, select the 'Record' command and determine the desired sampling rate and sampling resolution. To do this, click on the dropdown button and highlight the desired list box.



3. Click on the 'OK' button to take over these details. The recording console will appear.



4. Click on the  button to start recording. In the adjacent fields you will see the recording time as well as the recording level display.
5. Click on the 'OK' button to stop recording. The audio file recorded will appear in the display area.

---

## 5.5 Converting an audio file

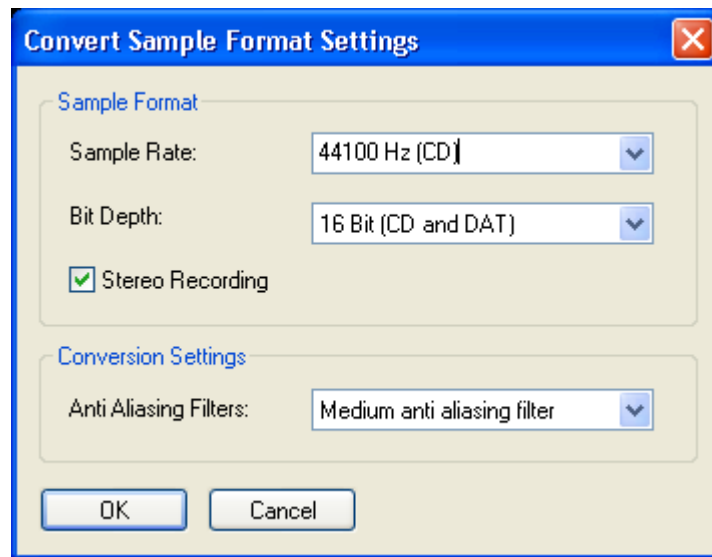
If needed, existing audio files can be converted in order to improve their quality to a desired level.



Only an entire audio file can be converted, i.e. highlighted sections of a file cannot be converted separately.

1. Open the desired file.
2. In the 'Edit' menu, select the 'Convert Sample Format' command.

3. Specify the sample format by selecting the desired sampling rate and the sampling resolution. To do this, click on the dropdown button and highlight the desired list box.



The higher the sampling rate and the sampling resolution, the more memory the file will need.

4. If necessary, change the conversion settings by selecting the desired filter.
5. Click on the 'OK' button to make the changes to the file.
6. In the 'File' menu, select the 'Save' command to save the changes to the file or select the 'save as' command to create a new audio file.



---

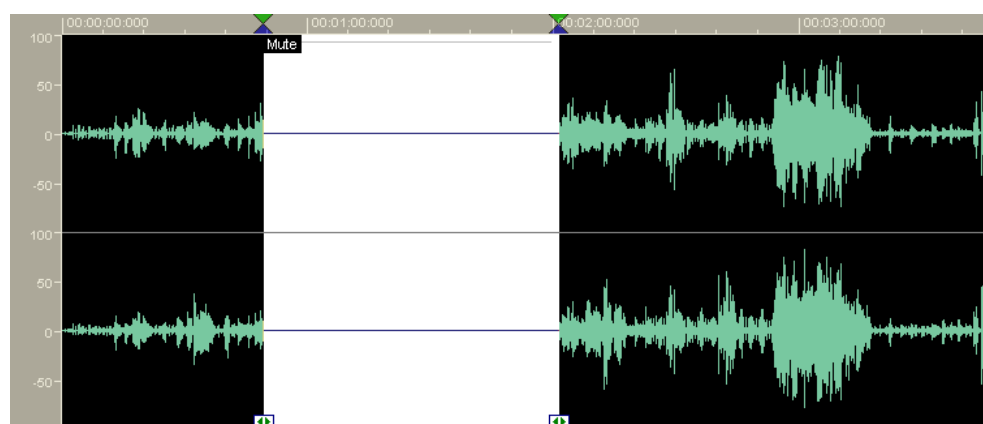
## 5.6 Editing audio files

One particular feature of **Nero Wave Editor** is its ability to edit audio files nondestructively. This means that changes to the audio file (e.g. as a result of using special effects or sound enhancement) can be checked immediately without having to perform a time-consuming recalculation of the audio data. The edited audio file is only computed while it is being saved.

### 5.6.1 Muting

Muting removes all the signals in the section selected.

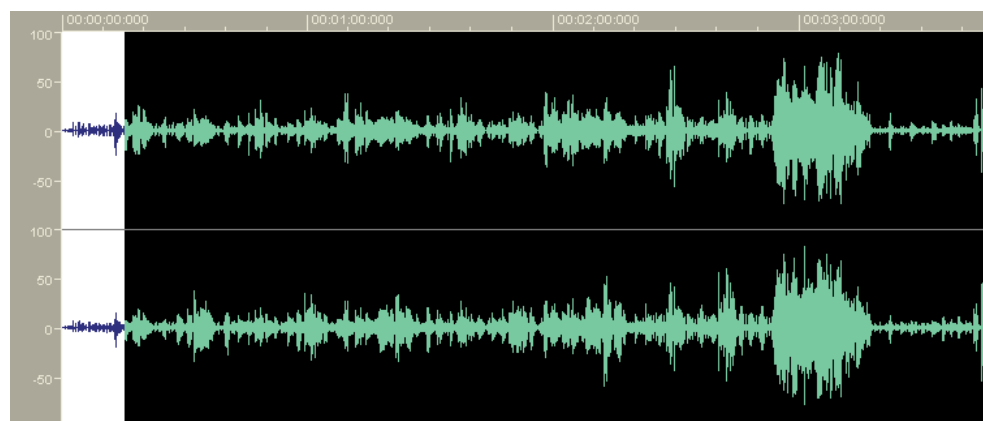
1. Open an audio file and highlight the section you want.
2. In the 'Volume' menu, select the 'Mute' command. This will lead to the selected position of the audio file being overwritten with 'silence'.



### 5.6.2 Normalization

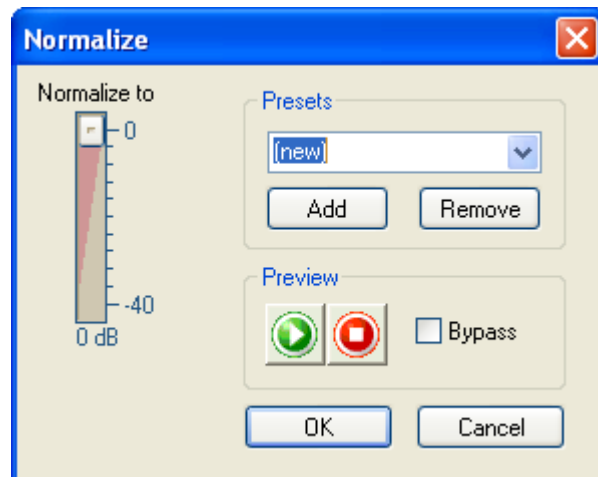
Normalization leads to an the volume being matched to a standard value. During normalization, the whole audio file or the selected section of the file is proportionately increased or reduced on the basis of a measurement of the maximum value. This does not mean that the volume at each point of the audio file is equally high, but only how loud the loudest point in the selected section may be. Normalization is largely used to give different audio files the same volume spectrum.

1. Open an audio file and highlight the section you want.

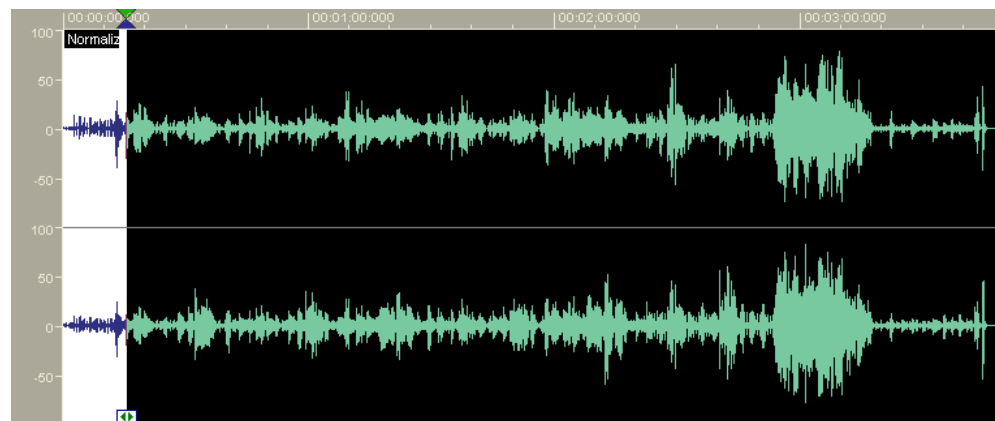


2. In the 'Volume' menu, select the 'Normalize' command. Push the slider in the direction required (pushing it upward will lead to a higher maximum level;

pushing it down will result in a lower maximum level) then click on the 'OK' button.



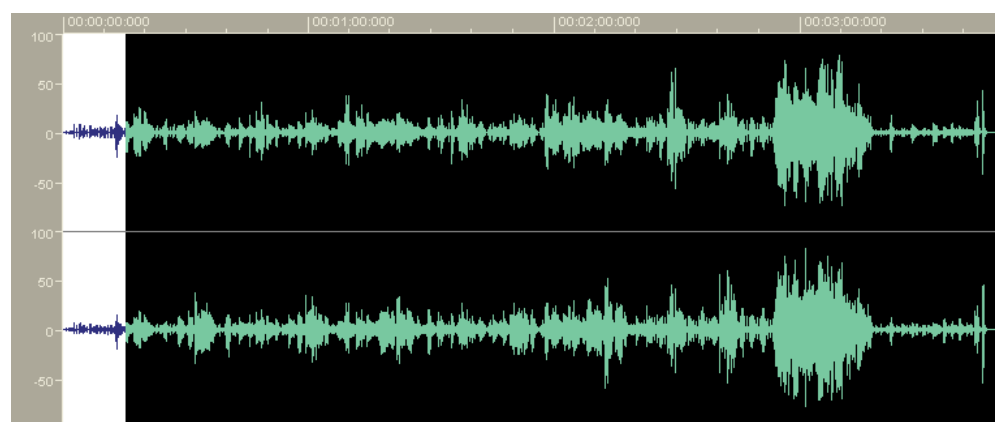
The altered volume is shown in the section selected.



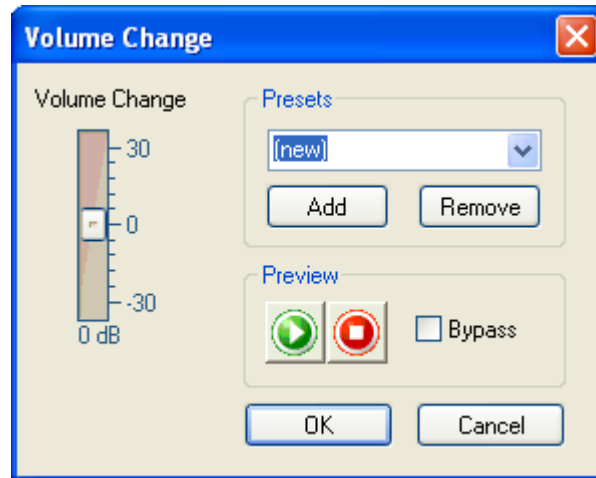
### 5.6.3 Changing volume

This section describes how to alter the volume of a selected section, for example because it is too quiet.

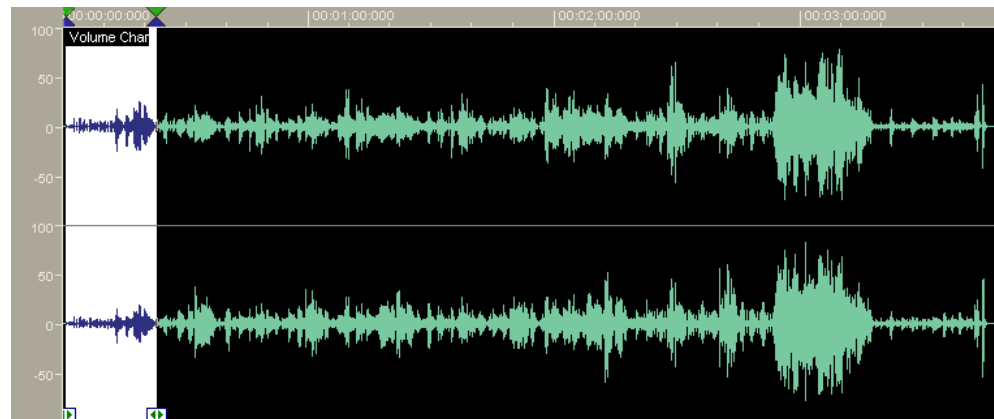
1. Open an audio file and highlight the section you want.



2. In the 'Volume' menu, select the 'Volume change' command. Push the slider in the direction required (if you push it upward it will increase the volume; pushing downward will reduce the volume) then click on the 'OK' button.



The altered volume is shown in the section selected.



## 5.6.4 Fading in and out

There are four different methods available for fade-in and fade-out effects.

To fade in, the volume of the selected section is relatively intensely reduced at the beginning and then reduced less and less towards the end. Fading out is exactly the opposite; the volume of the selected section is reduced relatively little at the beginning but then diminishes more and more toward the end. The fade in and fade out effects follow a mathematical curve.

- Linear – the volume is reduced or increased at a rate proportional to the time
- Exponential – the volume increases in line with an exponential function.
- Logarithmic – the volume increases in line with a logarithmic function.
- Sinusoidal – the volume increases at an interval of half the wavelength of a sinusoidal function.

1. Open an audio file and highlight the section you want.
2. In the 'Volume' menu, select the 'Fade In' or 'Fade Out' command and select the effect you require.

# 6 Recording gramophone records

---

## 6.1 Preparation

There are many ways of reproducing the sound of records on a computer; the following example only describes the basic procedure for doing this.



The signal received from the record player's magnetic sampling system cannot be directly fed into the soundcard's line-in input, as the signal is frequency-distorted for technical reasons. A so-called 'frequency corrector preamplifier' between the sampling system and the soundcard is needed in order to correct the frequency response. This is most easily performed using the amplifier's phono input.

In order to rerecord, you will need:

- a record player
- an amplifier
- a computer with a soundcard
- around 700 MB free memory
- cables to connect the individual components

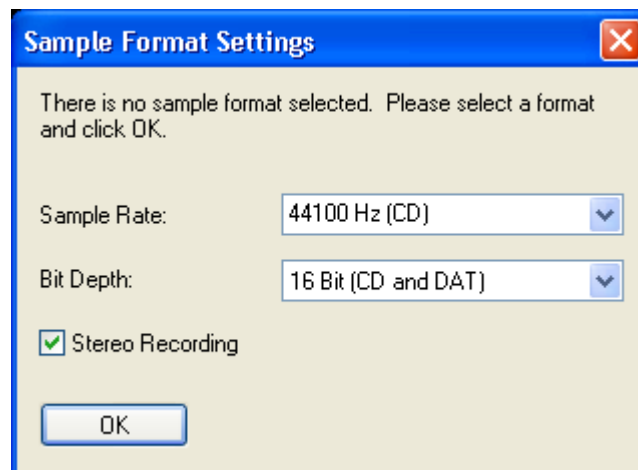


Sometimes leakage pickups (humming) can arise when the soundcard is linked to the amplifier. The humming is caused when two devices that have already been grounded (earthed) are connected with one audio cable. A by-pass power filter or transformer can solve the problem. Sometimes it is simply enough if the devices are connected to different power sources.

1. Connect the record player to the amplifier.
2. Connect the amplifier to the soundcard.
3. Clean the record.

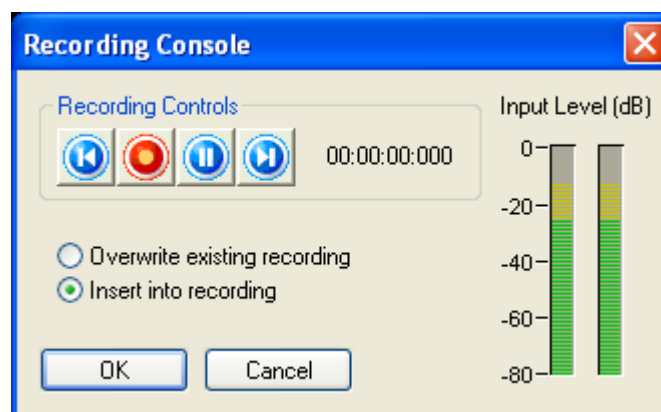
## 6.2 Recording


1. Start **Nero Wave Editor**: Start > Programs > Nero > Nero 6 > Nero Wave Editor.
2. In the 'File' menu, select the 'New' command.
3. In the 'Audio' menu, select the 'Record' command and determine the desired sampling rate and sampling resolution. To do this, click on the dropdown button and highlight the desired list box.



For a recording that is to be written on a CD, a sampling rate of 44100 Hz and a sampling resolution of 16 bit are recommended.


4. Click on the 'OK' button to take over these settings. The recording console will appear.



5. Click on the  button to start recording, then place the stylus on the record. You will see the recording time and the level control display in the recording console while you are recording.



If the level is too loud or too quiet, you can change it. Open the volume control and move the slider of the 'line' section in the desired direction.

6. At the end of a track, click on the 'OK' button to stop recording. The audio file recorded will appear in the display area.
7. Click on the  button check the recording.



You can best monitor the recording if you wear headphones.

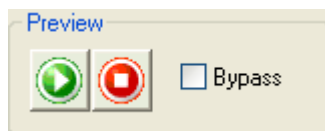
8. Adjust the audio file as you wish, using a filter or optimize the sound.
9. Repeat the corresponding steps to record more tracks.


# 7 Effects

---

## 7.1 Introduction

One particular feature of **Nero Wave Editor** is its ability to nondestructively edit audio files. This means that changes to the audio file (e.g. as a result of using special effects or sound enhancement) can be checked immediately without having to perform a time-consuming recalculation of the audio data. The edited audio file is only computed during saving.

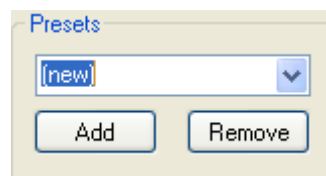


Click on the  button to play back the audio file with the changes stated. This allows you to check straightaway that you are happy with the results.

### 7.1.1 Saving the effect settings

It is very easy to save the effect settings.

1. Use the mouse to click in the text window of the appropriate dialog and enter a name.

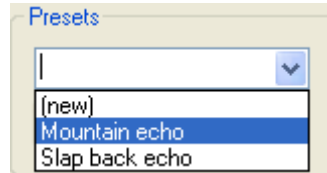


2. Click on the 'Add' button to save the settings.

## 7.1.2 Loading the effect settings

You can load your own effect settings and those supplied with **Nero Wave Editor** as easily as you can save them.

1. In the dialog concerned, click on the dropdown button and, in the list box field, highlight the name of the desired setting.

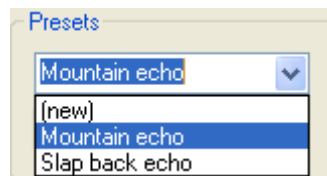


2. Click on the  button to check the setting.

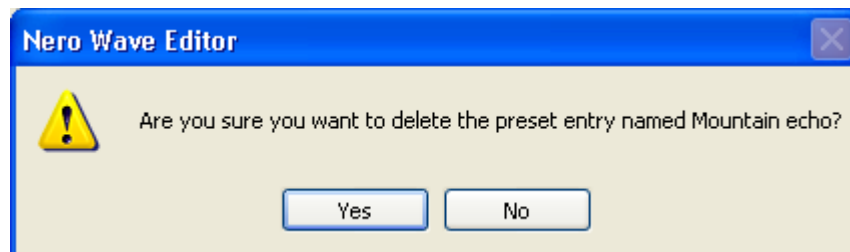
## 7.1.3 Deleting the effect settings

It goes without saying that effect settings can also be deleted.

1. In the dialog concerned, click on the dropdown button. Then, in the list box field, highlight the name of the setting you wish to delete.



2. Click on the 'Remove' button to remove the chosen setting.
3. In the dialog that follows, click on the 'Yes' button to confirm that you wish to delete.

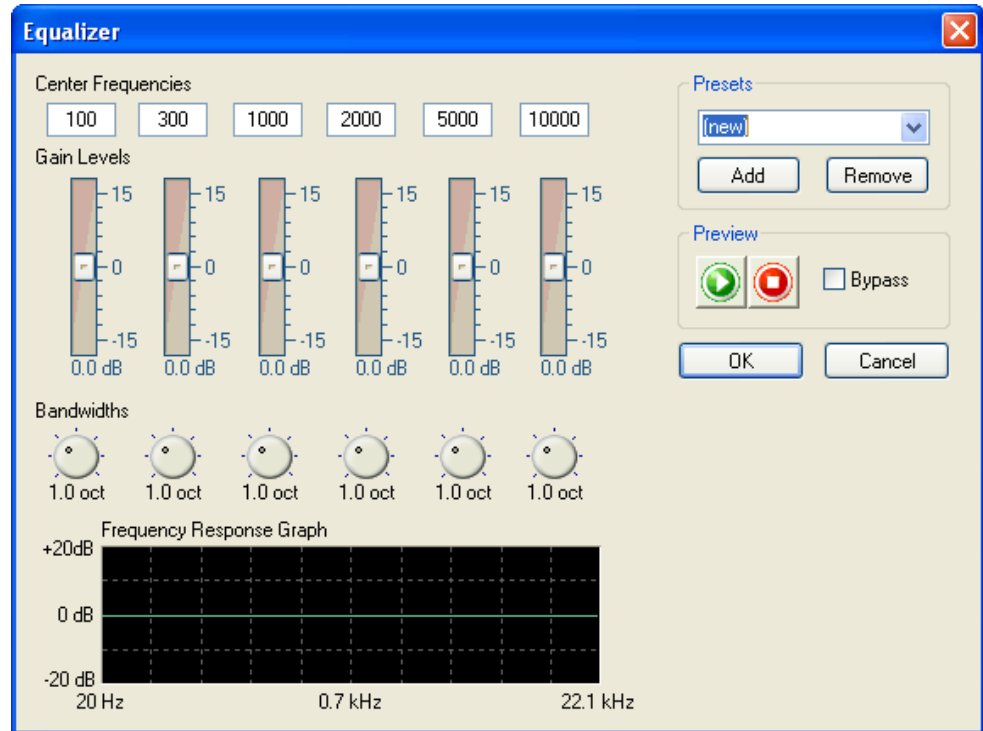




## 7.2 Equalizer


With **Nero Wave Editor's** 6-band equalizer, you can amplify or reset any frequency bands you want. This means that you can selectively modify these frequency ranges.

1. Open the desired file.
2. Select the 'Equalizer' command in the 'Tools' menu.



3. Push the slider in the direction required – if you push it upward there will be amplification; pushing it down will have the opposite effect.



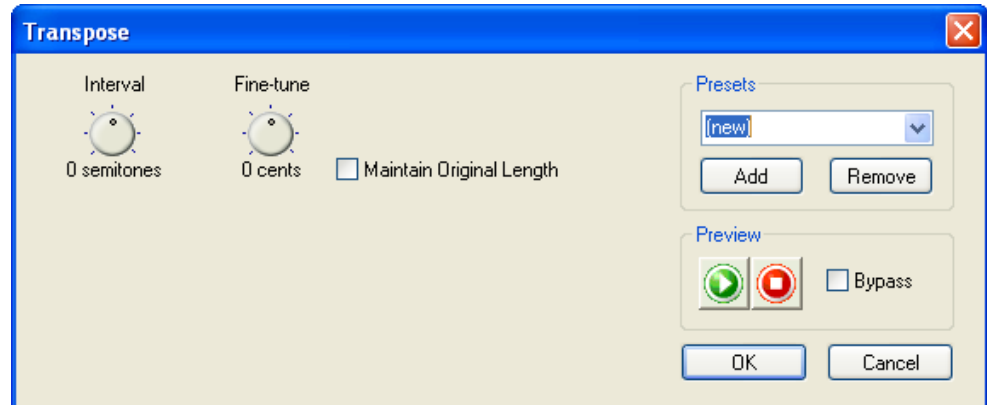
Click on the  button to play back the audio file with the changes stated. This allows you to check straightaway that you are happy with the results.

4. Click on the 'OK' button to take over the changes.

## 7.3 Transposing


With the transposing tool, the key (tonality) of an audio file (or a selected section of one) can be changed. Transposing is particularly important when creating files that are composed of loops. For instance, if you raise the frequency of the human voice by four semitones, it sounds as if the person speaking has helium in his or her lungs (i.e. ridiculously high-pitched). If the frequency is lowered by four semitones, voices sound very much deeper.

1. Open the desired file.
2. Select the 'Transpose' command in the 'Tools' menu.



3. Use the 'Interval' and/or 'Fine Tune' round buttons to set the type and intensity of the transposing.  
The file may become longer as a result of the type of transposing chosen. If you select the 'Maintain Original Length' control field, the original file length will be retained.



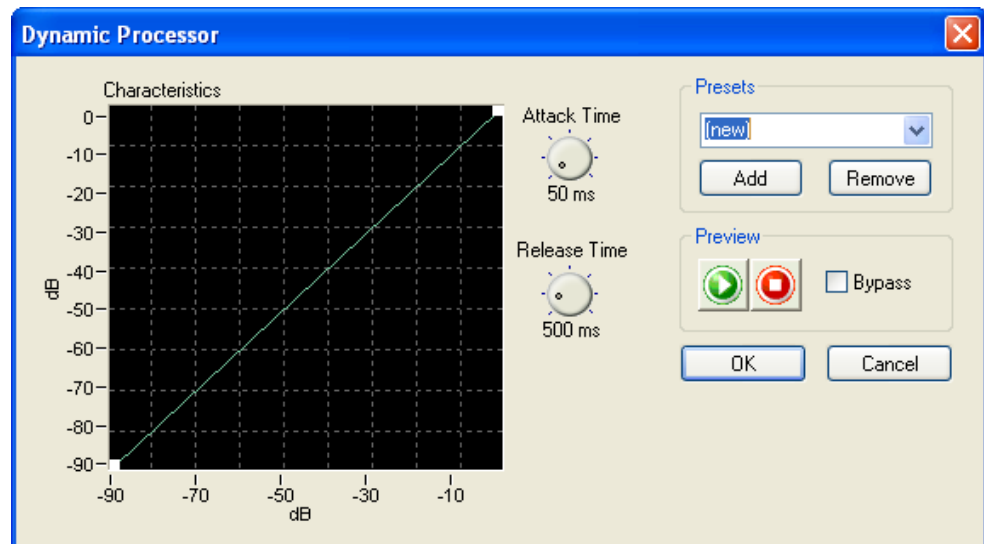
Click on the  button to play back the audio file with the changes stated. This allows you to check straightaway that you are happy with the results.

4. Click on the 'OK' button to take over the changes.

## 7.4 Dynamics

The dynamic processor changes the amplitude, i.e. the dynamic part of an audio file. This is then limited, compressed or increased. This setting is made via curve control; if the line runs from the lower left corner to the upper right-hand corner, the amplitudes of the input (X) and output signals (Y) are the same at each point. Editing this line will change the output in relation to the input.

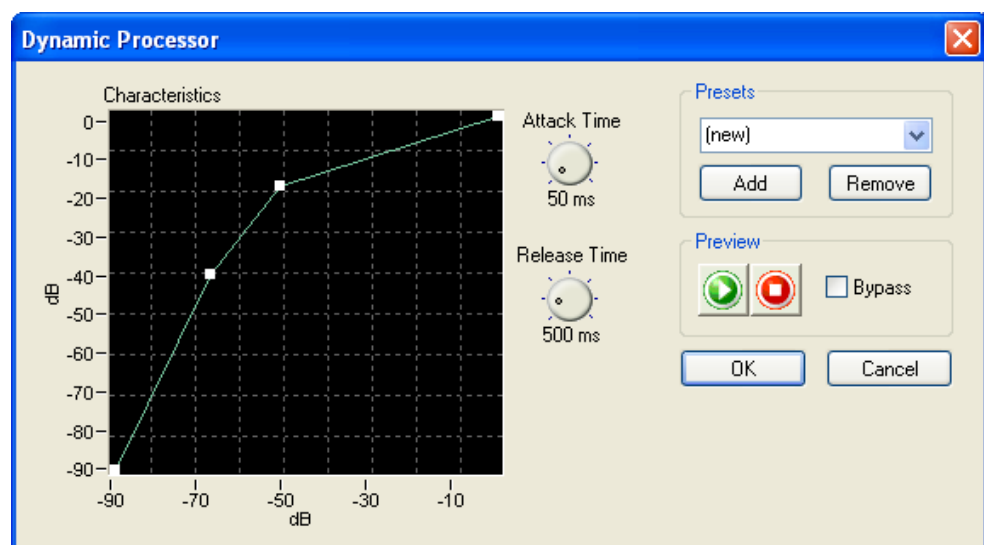
1. Open the desired file.
2. Select the 'Dynamic Processor' command in the 'Tools' menu.



3. Place the mouse cursor on that part of the green line that you wish to alter – a white square will appear at the place where you click the mouse – and drag the square to the position desired. Repeat this procedure for all the sections selected.




You can remove a dynamic position by clicking on the chosen square with the right-hand mouse button.



In addition, you can also change the reaction time of the dynamic processor using the 'Attack time' and 'Release time' round buttons.



Click on the  button to play back the audio file with the changes stated. This allows you to check straightaway that you are happy with the results.

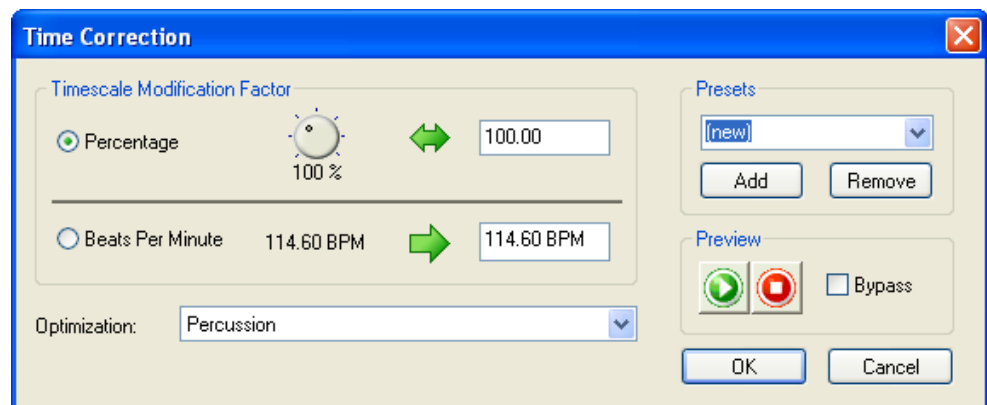
4. Click on the 'OK' button to take over the changes.

---

## 7.5 Time correction


An audio file can be shortened or extended by means of time correction. When sampling files that are made up of loops, time correction is particularly important - in order that all the audio elements have the same length. The undesired side-effects caused by time correction can be remedied selectively, depending on the audio element.

1. Open the desired file.
2. Select the 'Time Correction' command in the 'Tools' menu.



3. Click on the radio button of your choice in the 'Time Scale Modification Factor' area to determine the correction factor. This is either a percentage modification factor or a new tempo in 'Beats Per Minute' (BPM). You can set the time scale modification factor by entering a figure or by turning the knob.
4. Choose the appropriate optimizing method by clicking on the dropdown button and highlighting the desired list box field.



Click on the  button to play back the audio file with the changes stated. This allows you to check straightaway that you are happy with the results.

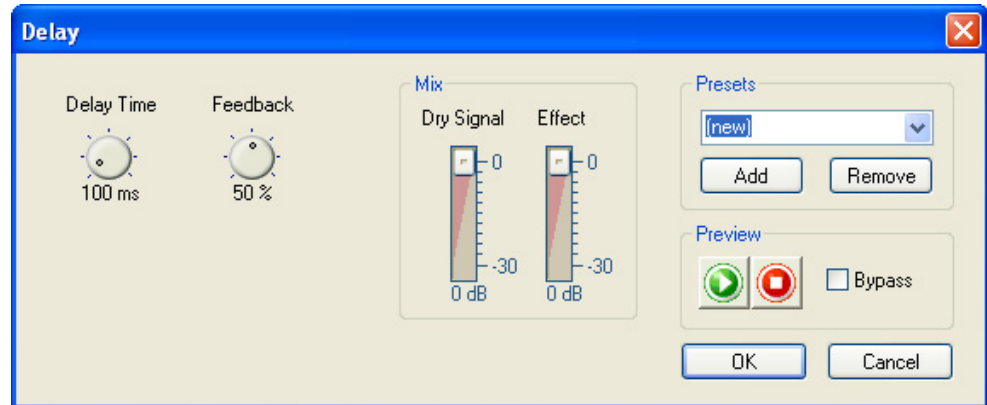
5. Click on the 'OK' button to take over the changes.

---

## 7.6 Delay


Delay generates echo effects by repeating the sound with an interval. The combination of delay and feedback creates an effect like that of an echo from a distant mountain.

1. Open the desired file.
2. Select the 'Delay' command in the 'Effects' menu.



3. Choose a presetting by clicking on the dropdown button and highlighting the desired list box field or determine the delay or feedback yourself by turning the appropriate knob and change the signal and the effect with the sliders.



Click on the  button to play back the audio file with the changes stated. This allows you to check straightaway that you are happy with the results.

4. Click on the 'OK' button to take over the changes.

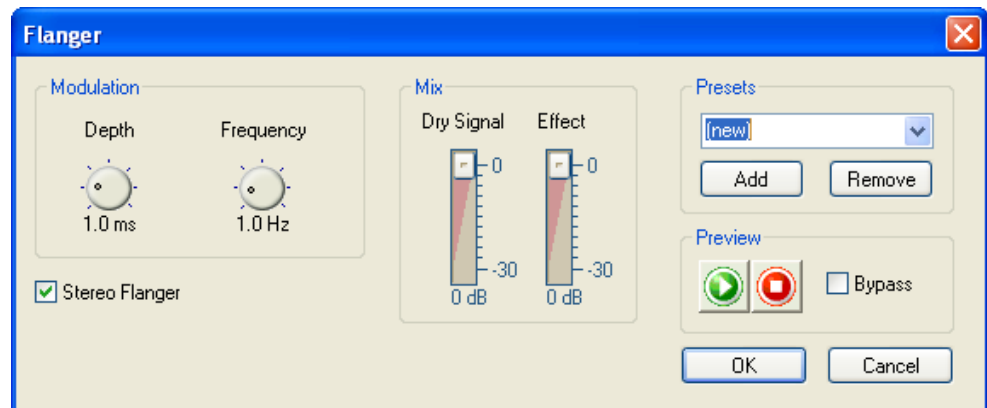
---

## 7.7 Flanger

The flanger creates unusual sound effects through variable modulation and mixing. The effect is caused by the change in the time delay. Using the flanger, the original is mixed together with a signal that has been modulated (changed in pitch). This signal is sometimes slower or sometimes faster than the original. Pleasant stereo effects can be created if the signal then switches from "left" to 'right' and back again.


1. Open the desired file.

2. Select the 'Flanger' command in the 'Effects' menu.



3. Choose a presetting by clicking on the dropdown button and highlighting the desired list box field or determine the depth or frequency yourself by turning the appropriate knob and change the signal and the effect with the sliders.



Click on the  button to play back the audio file with the changes stated. This allows you to check straightaway that you are happy with the results.

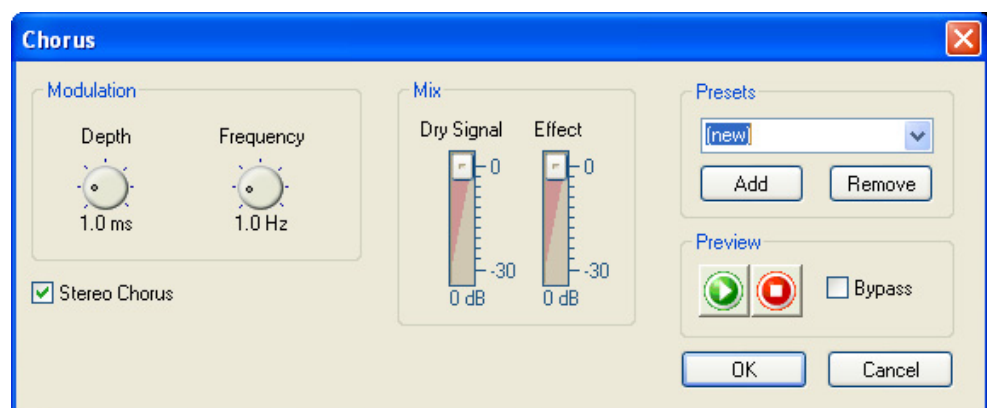
4. Click on the 'OK' button to take over the changes.

---

## 7.8 Chorus


The chorus, like the flanger creates unusual sound effects through variable modulation and mixing. In comparison with the flanger, the delay is longer and a number of delayed, i.e. modulated signals are added at the same time. By these means, the audio file receives a warm sound and the impression is created that a greater number of voices can be heard.

1. Open the desired file.
2. Select the 'Chorus' command in the 'Effects' menu.



3. Choose a presetting by clicking on the dropdown button and highlighting the desired list box field or determine the depth or frequency yourself by turning the appropriate knob and change the signal and the effect with the sliders.



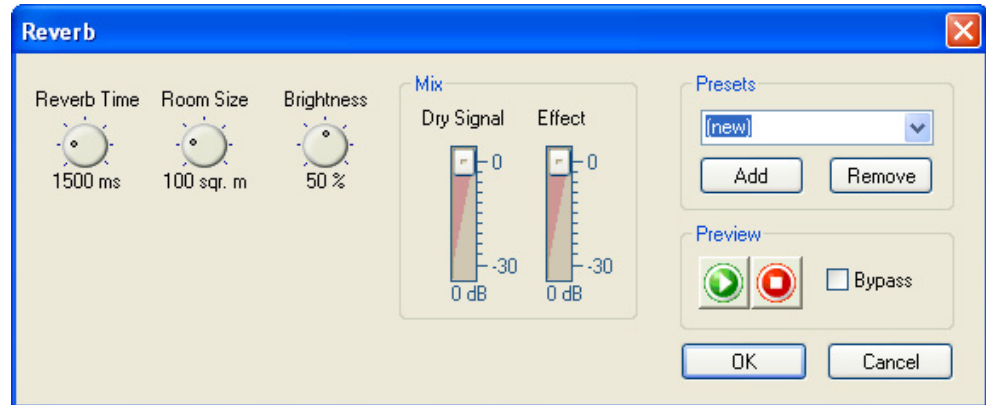
Click on the  button to play back the audio file with the changes stated. This allows you to check straightaway that you are happy with the results.

4. Click on the 'OK' button to take over the changes.

## 7.9 Reverberation


The reverberation effect simulates the reflections of a real room, allowing the impression to arise that the recording was made in another environment, e.g. in a concert hall.

1. Open the desired file.
2. Select the 'Reverb' command in the 'Effects' menu.



3. Choose a presetting by clicking on the dropdown button and highlighting the desired list box field or set the reverberation, room size and/or 'brightness' yourself by turning the appropriate knob, and change the signal and the effect with the sliders.



Click on the  button to play back the audio file with the changes stated. This allows you to check straightaway that you are happy with the results.

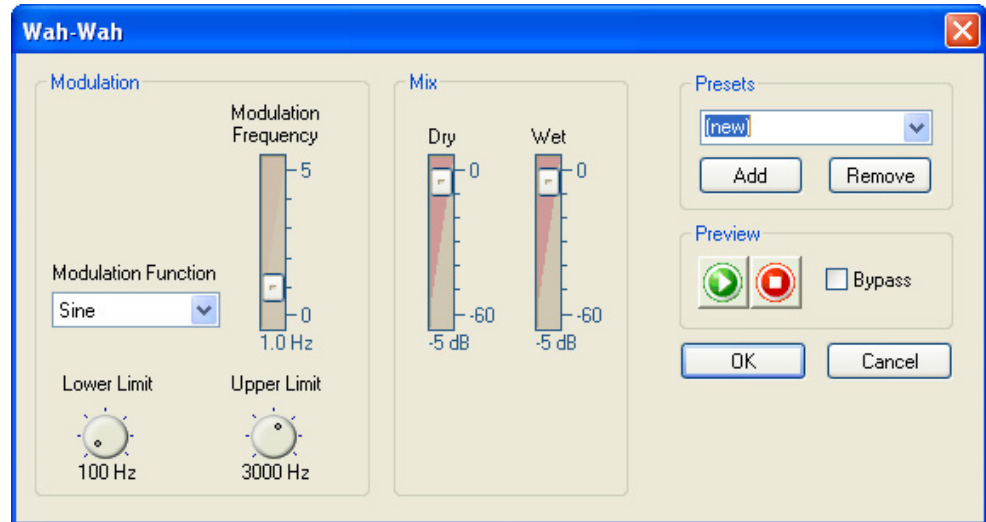
4. Click on the 'OK' button to take over the changes.



## 7.10 Wah-Wah


The 'wah-wah' effect is generated by a bandpass filter which is mixed with the direct signal. The filter allows the center frequency to be changed over time. The modifications to the center frequency can be proportional to the volume level of the input signal or they can follow a predefined function such as a sine or triangle function.

1. Choose 'Wah-Wah' from the 'Effects' menu.



2. In the 'Modulation' area, choose a function to determine how the modulation will be implemented. Choose a modulation frequency and enter the upper and lower limits of the modulation range.
3. In the 'Mix' area specify the relationship between the direct and the effect signal.



Clicking on the  button plays the audio file with the specified changes. This allows you to check immediately whether you are happy with the results.

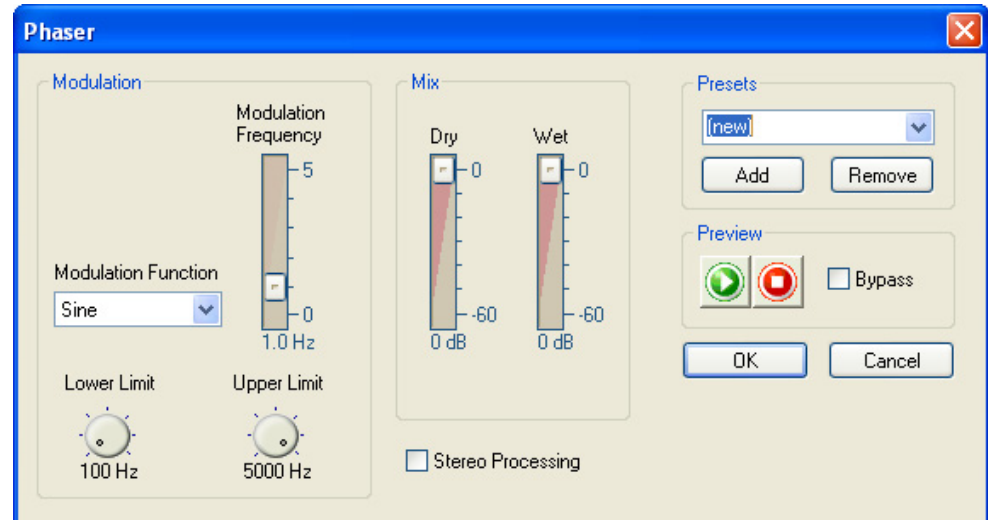
4. Click on the 'OK' button to accept the changes.

---

## 7.11 Phaser


The phaser is a notch filter with several notches in its frequency band. The notch filter alternately strengthens and weakens the harmonic components of the audio input signal and produces an output signal with a 'floating effect'.

1. Choose 'Phaser' from the 'Effects' menu.



2. In the 'Modulation' area, choose a function to determine how the modulation will be implemented. Choose a modulation frequency and enter the upper and lower limits of the modulation range.
3. In the 'Mix' area specify the relationship between the direct and the effect signal.



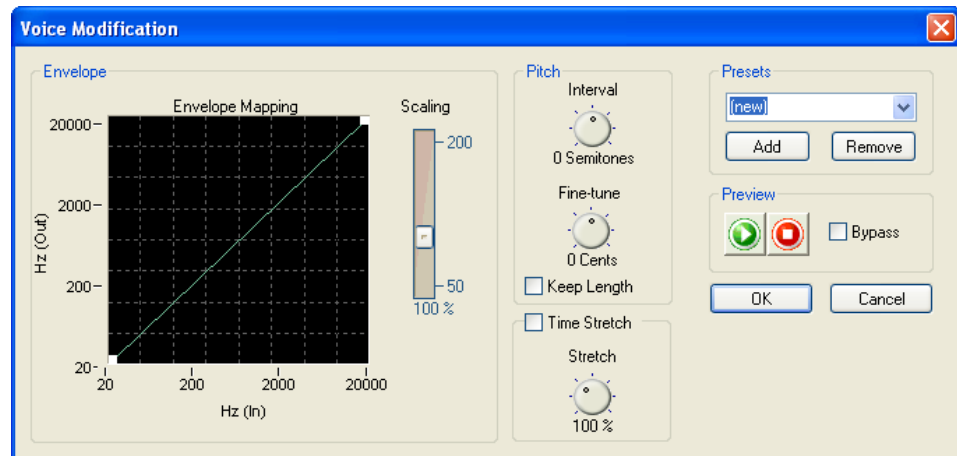
Clicking on the  button plays the audio file with the specified changes. This allows you to check immediately whether you are happy with the results.

4. Click on the 'OK' button to accept the changes.

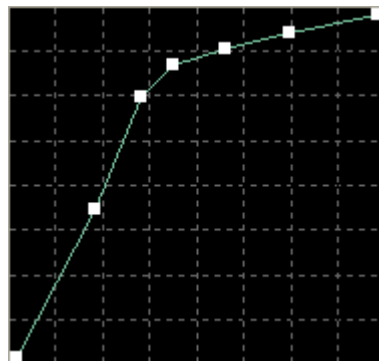
## 7.12 Voice modification

Voice modification allows the voice components of audio files to be modified by changing the smoothed frequency band. If the smooth frequency band is scaled, for example, the voice will sound lighter (the resonances are higher) or darker (the resonances are deeper). As well as scaling, it is also possible to enter a curve with the input and output values of your choice. This allows you to modify the voice until it becomes unrecognizable.

1. Choose 'Voice Modification' from the 'Effects' menu.




2. In the 'Envelope' area determine the appearance of the frequency band by giving the curve the profile you want, and enter the scaling factor.



3. In the 'Pitch' area choose the interval and the fine tune by turning the knob. In addition, you can check the 'Keep Length' box to keep the original length of the recording.
4. If you need a different time scale modification factor, you can enter the percentage by which the recording should be stretched by turning the knob in the 'Time Stretch' area. To do this, you must check the 'Time Stretch' box.



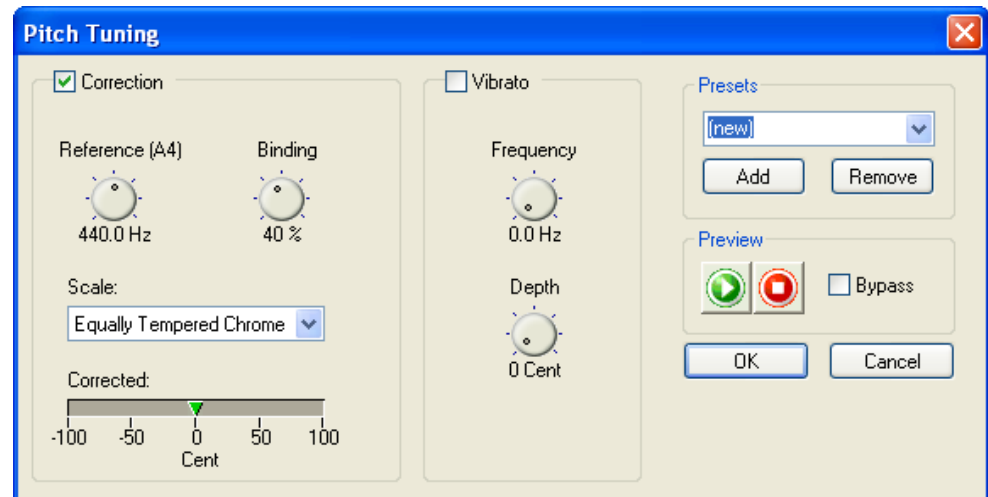
Clicking on the  button plays the audio file with the specified changes. This allows you to check immediately whether you are happy with the results.

5. Click on the 'OK' button to accept the changes.

## 7.13 Pitch tuning


Pitch tuning allows you to correct the intonation of vocal or instrumental recordings. The algorithm continuously analyses the pitch and corrects it, where necessary, in order to ensure that the intonation remains correct.

1. Choose 'Pitch Tuning' from the 'Effects' menu.



2. Check the box in the 'Correction' area if you want to make corrections and choose a scale to determine how pitch tuning will be carried out. In addition you can choose the reference tone and the binding by turning the corresponding knob. Binding is a measurement of the maximum permitted deviation from the reference tone.
3. Check the box in the 'Vibrato' area if you want to add vibrato. You can specify the frequency and depth of the vibrato by turning the respective knobs.



Clicking on the  button plays the audio file with the specified changes. This allows you to check immediately whether you are happy with the results.

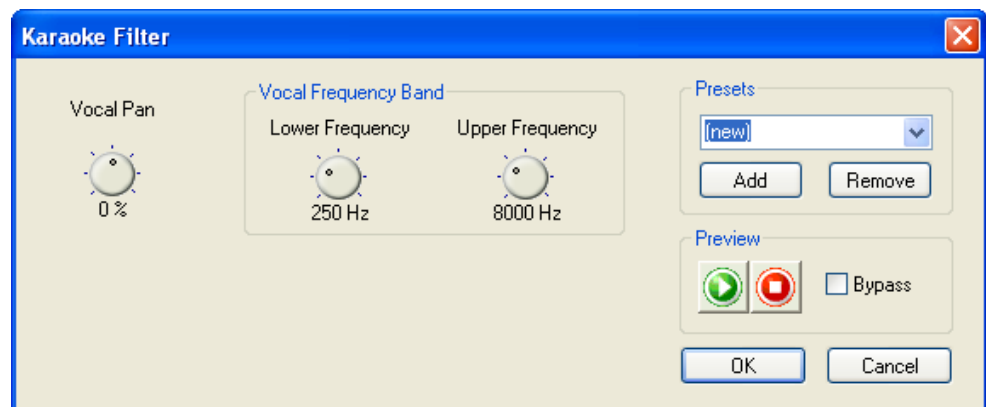
4. Click on the 'OK' button to accept the changes.

---

## 7.14 Karaoke filter


The Karaoke filter filters the human voice out of audio files, so that the original song can be saved without the vocals. The filter removes those parts of the song which are the same in both stereo channels. This is generally the vocals. Because of the way in which the filter works, the original file must be a stereo file. Also, there is no guarantee that the voice can be removed successfully. The success of the filtering depends on the mixing during the production of the recording.

1. Choose 'Karaoke Filter' from the 'Tools' menu.



2. Determine the position of the vocals in the stereo field by turning the 'Vocal Pan' knob.
3. Turn the knobs in the 'Vocal Frequency Band' area to specify the upper and lower limits of the frequency range within which the filter will work.



Clicking on the  button plays the audio file with the specified changes. This allows you to check immediately whether you are happy with the results.

4. Click on the 'OK' button to accept the changes.

# 8 Enhancement

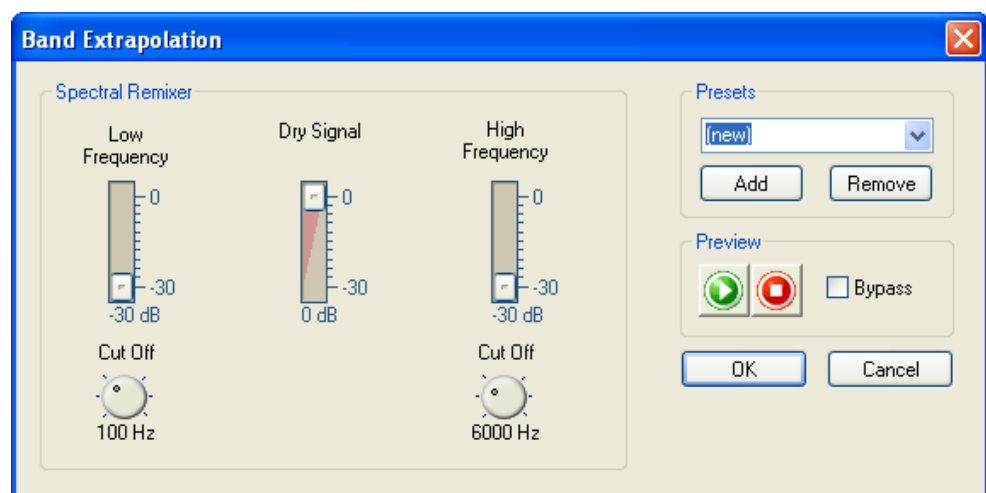
## 8.1 Introduction

The sound of audio files can be improved with the enhancement commands.

## 8.2 Band extrapolation


Band extrapolation improves the sound of dull recordings. This is done by synthesizing the higher frequencies to produce artificial harmonics. Low frequencies are also generated to produce powerful bass tones.

1. Open the audio file.
2. Choose 'Band Extrapolation' from the 'Enhancement' menu.



3. Choose an existing setting by clicking on the button on the drop-down list and selecting an item from the list, or choose the volumes of the two frequency ranges and of the original signal using the sliders in the 'Spectral Remixer' area. You can also specify the cut off frequencies for high and low frequency synthesis by turning the appropriate knobs.



Click on the  button to play back the audio file with the changes stated. This allows you to check straightaway that you are happy with the results.

4. Click on the 'OK' button to take over the changes.

---

## 8.3 DC Offset Correction

DC offset correction improves recordings from poorly calibrated equipment (not centered around the zero point). The subsonic frequencies are removed and with them the DC errors.

1. Open the file of your choice and select the appropriate area.
2. Select the 'DC Offset Correction' command in the 'Enhancement' menu. The correction is made to the selected part of the audio file.



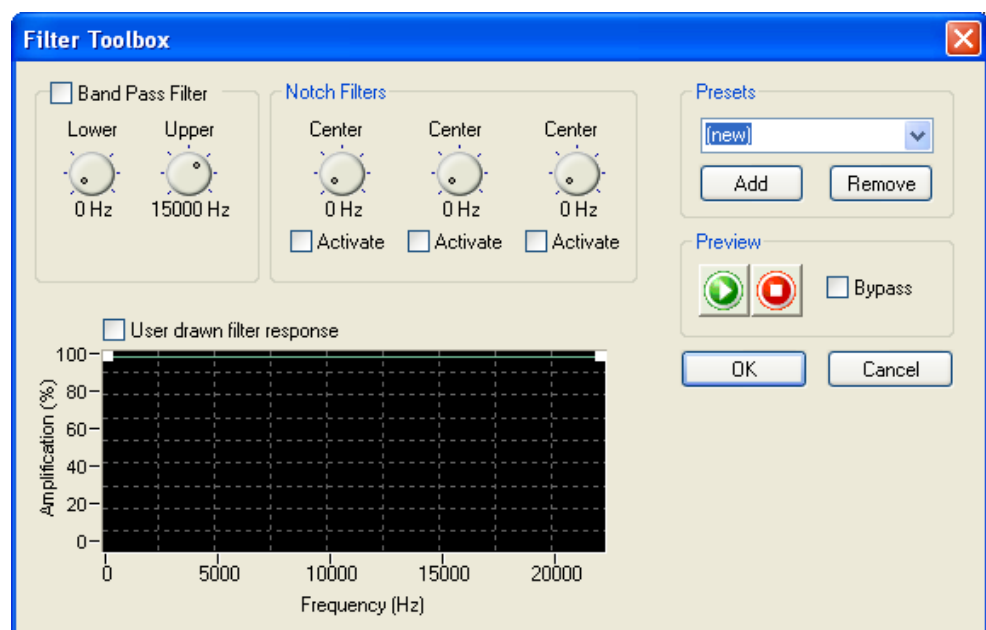
With this command, you do not have any selection choices and it is not possible to check the result of optimization in advance.

---

## 8.4 Filter toolbox

The filter toolbox filters interference frequencies out of the recording. It has not only the normal functions such as low, high and bandpass filters, but also a user-defined frequency curve and three individual notch filters. The notch filters can be used to remove specific interference such as the buzzing of the power supply.


1. Choose 'Filter Toolbox' from the 'Enhancement' menu.



2. Check the box in the 'Band Pass Filter' area if you want to use this filter, and specify the upper and lower limits of the frequency range by turning the corresponding knobs.
3. In the 'Notch Filters' area, choose the filter you want and specify the center frequency by turning the knob.

4. Check the box in the 'User drawn filter response' area if you want to use your own frequency. You can draw this using the green line.



Clicking on the  button plays the audio file with the specified changes. This allows you to check immediately whether you are happy with the results.

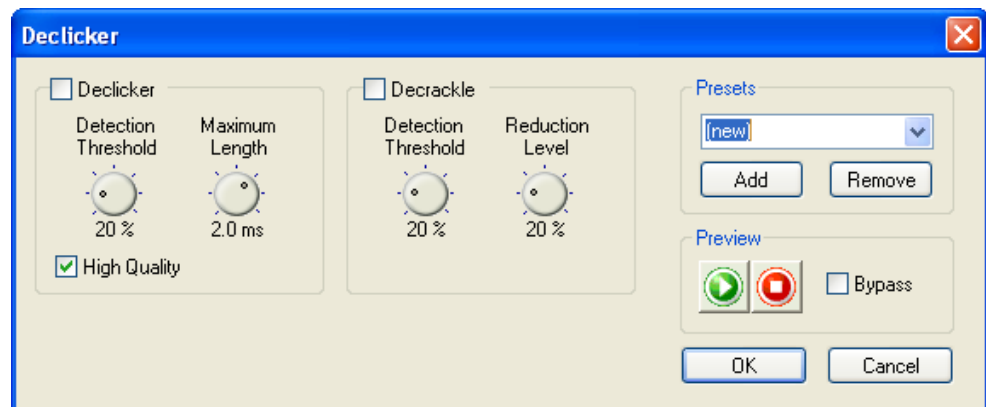
5. Click on the 'OK' button to accept the changes.

---

## 8.5 Declicker


The Declicker effectively removes the clicks which are often heard on records. The Decrackler is aimed at very short, impulse-type interference with small amplitudes which occurs frequently (and sounds like crackling).

1. Choose 'Declicker' from the 'Enhancement' menu.



2. Check the box in the 'Declicker' area if you want to remove clicks. Specify the sensitivity of the Declicker by turning the corresponding knobs to set the detection threshold and the maximum length of the clicks. If you check the 'High Quality' box, a complex algorithm is used for interpolation. If your PC is not fast enough for high quality mode, you should uncheck this box.
3. Check the box in the 'Decrackle' area if you want to remove crackling. Specify the sensitivity of the Decrackler by turning the corresponding knobs to set the detection threshold and the crackle reduction level.



Clicking on the  button plays the audio file with the specified changes. This allows you to check immediately whether you are happy with the results.

4. Click on the 'OK' button to accept the changes.



## 8.6 Noise Reduction

Noise reduction improves recordings where noise disturbs the sound of the audio file by removing undesired noises (background noise, buzzing, etc.) in a particular bandwidth.


1. Open the desired file.
2. In the 'Enhancement' menu, select the 'Noise Reduction' command.



3. Choose an existing setting by clicking on the button on the drop-down list and highlighting an item from the list, or select the subtraction profile by choosing the required mode. Select 'Editable Noise Curve', then click in the line in the field you want to change, a white square will appear at this point and you can drag the square to the required position.

You can also use the slider to set the reduction level and the 'Gain Floor' to the required position.



Click on the  button to play back the audio file with the changes stated. This allows you to check straightaway that you are happy with the results.

4. Click on the 'OK' button to take over the changes.

---

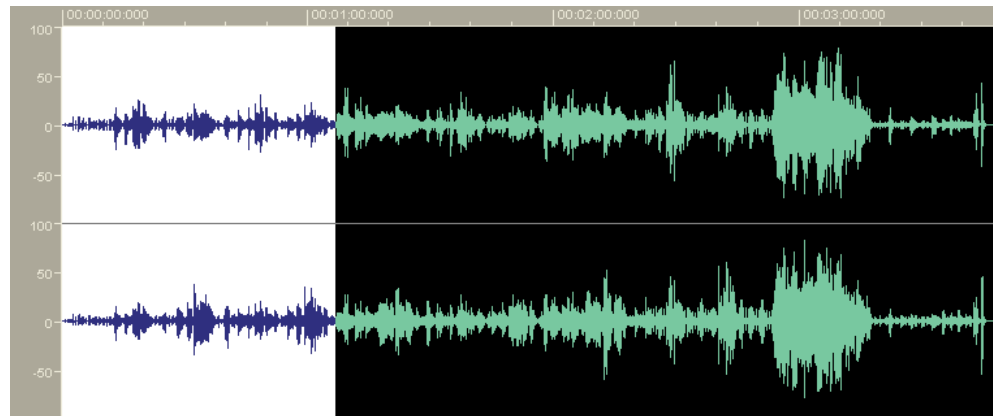
## 8.7 Noise Analysis

Noise analysis helps in analyzing undesired noises such as background noises, buzzing, etc. The results obtained by analyzing the frequency characteristics of the noise can be used to filter this noise out of the recording.

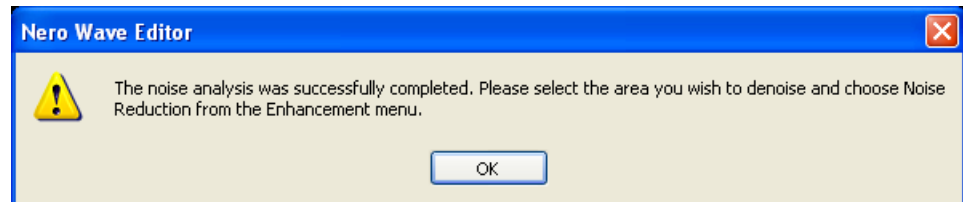


'Noise analysis' does not itself alter the audio file. However it enables 'Noise Reduction' to be made.

1. Open an audio file and highlight the section concerned (which should consist of noise only).



2. In the 'Enhancement' menu select the command 'Noise Analysis'. The analysis is carried out and a window appears on closing which shows the next steps to be performed. Click on the **OK** button to close the window.

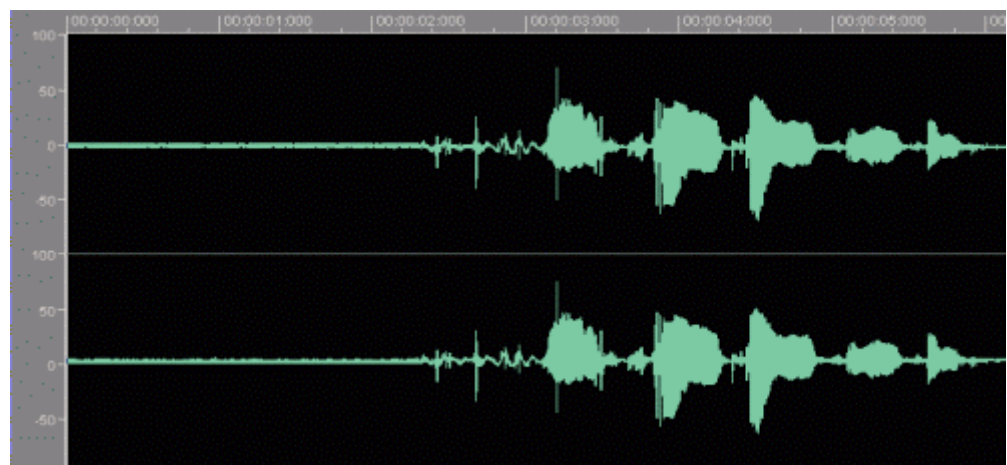


3. Highlight the whole field you want to enhance (normally the whole audio file), and select the command 'Noise Reduction' on the 'Enhancement' menu. The 'Noise Print' option is active during noise reduction in the noise analysis process.



If you select another option, 'Noise Print' is no longer available and noise analysis must be re-started.

4. Set the reduction level to the required position using the slider.
5. Click on the 'OK' button to run noise reduction.  
The next picture shows the audio file changed using noise reduction.



## 9 Contact

Nero Wave Editor is an Nero AG product.

**nero**  
**((WAVE EDITOR 2))**

Nero AG  
Im Stoeckmaedle 18  
76307 Karlsbad  
Germany

Web: <http://www.nero.com>  
Help: <http://englishsupport.nero.com>  
<http://frenchsupport.nero.com/>  
<http://germansupport.nero.com/>  
Mail: [techsupport@nero.com](mailto:techsupport@nero.com)  
Fax: +49 7248 928 499

Copyright © 2003 - 2005 Nero AG. All rights reserved.

# 10 Index

## A

- Audio files
  - Converting 23
  - Editing 25
  - Inserting 21
  - Loading 19
  - Playing 19
  - Recording 22, 29
  - Saving section 21
  - Selecting section 20
- Audio Output
  - Settings 13

## B

- Bit depth 7
- Bitrate 7

## C

- Changing volume 26

## D

- Directories
  - Specifying 12
- Display
  - Spectrogram 16
  - Wave 16
  - Wavelet 16

## E

- Effects
  - Deleting 32
  - Dynamics 35
  - Echo 37
  - Equalizer 33
  - Flanger 37
  - Loading 32
  - Saving 31

- Effects
  - Chorus 38
  - Reverberation 40
- Enhancement
  - DC Offset Correction 47
  - Noise Analysis 50
  - Noise Reduction 49

## F

- Fade in 27
- Fade out 27

## I

- Input Device
  - Selecting 10

## L

- Level meters 15

## M

- Muting 25

## N

- Normalization 25

## O

- Output device
  - Selecting 10

## R

- Recording 22
  - Gramophone records 29

## S

- Sampling rate 7
- Select
  - Input device 10
  - Output device 10
- Sound optimization
  - High frequency 46
- Spectrum analyzer 15
- Standard toolbar 15
- Status bar 15

## T

- Time correction 36
- Transposing 34

## **V**

Vertical zoom bar 15