

PORTABLE CD-REWRITER Installation Manual

FOR
PARALLEL PORT &
PCMCIA (PC Card)

EXP COMPUTER, INC.
EXP MEMORY PRODUCTS.
NON-TRANSFERABLE LIMITED WARRANTY

EXP COMPUTER INC., AND EXP MEMORY PRODUCTS ("EXP") warrants that the CD-RW Drive ("products") manufactured or distributed by EXP to be free from failures due to defects in materials or workmanship for a full one year from the date of purchase of the products.

This warranty is void if the product is damaged by abnormal or improper use or by accident, abuse or if any attempt to repair or modify the product without authorization from EXP. Your sales receipt or invoice, showing the date of purchase and the name of the authorized reseller, is your proof of the date of purchase. During the warranty period, EXP will at its option, replace or repair, at no charge, the product that in its opinion is defective.

Before you return the failed products, contact EXP. You will need to obtain a Return Merchandise Authorization (RMA) number by calling EXP's Technical Support Department at (516) 496-7629. The RMA number should be displayed on the **outside** of the returning package and on the accompanying packing list. EXP cannot be held responsible for any package returned without the RMA number. You are responsible for packaging, providing **proof of the date of purchase** and the shipping cost of the failed product to EXP Computer, Inc. You are responsible for mailing the warranty registration card. The warranty claims may not be honored if there is no corresponding registration card on file at EXP.

IN NO EVENT WILL EXP BE LIABLE FOR ANY DIRECT, INDIRECT, SPECIAL, INCIDENTAL OR CONSEQUENTIAL DAMAGE, INCLUDING LOSS OF PROFIT, LOSS OF SAVINGS; OR ANY OTHER DAMAGES CAUSED BY PRODUCT OR FAILURE OF THE PRODUCT TO PERFORM.

THIS LIMITATION OF LIABILITY APPLIES EVEN IF EXP HAS BEEN ADVISED OF THE POSSIBILITY OF SUCH DAMAGES. SOME STATES DO NOT ALLOW THE EXCLUSION OR LIMITATION IN INCIDENTAL OR CONSEQUENTIAL DAMAGES, SO THE ABOVE EXCLUSION OR LIMITATION MAY NOT APPLY TO YOU.

EXP WEB SITE: WWW.EXPNET.COM
TECHNICAL SUPPORT: 516-496-7629
TECHNICAL SUPPORT E-MAIL: support@expcomputer.com

TABLE OF CONTENTS

INTRODUCTION	1
• SYSTEM REQUIREMENTS	
• FEATURES	
• PART NAME AND FUNCTIONS	
INTSTALLATION	3
INSTALLATION FOR PARALLEL PORT INTERFACE	
• SOFTWARE INSTALLATION FOR WINDOWS 95 AND 98	
• SOFTWARE INSTALLATION FOR WINDOWS NT	
INSTALLATION FOR PC CARD INTERFACE (OPTIONAL)	
• SOFTWARE INSTALLATION FOR WINDOWS 95 AND 98	
• SOFTWARE INSTALLATION FOR WINDOWS NT	
TROUBLE SHOOTING	13
• PARALLEL PORT INTERFACE	
• PC CARD INTERFACE (OPTIONAL)	
REMOVING AND RE-INSTALLING THE DRIVER	19
• PC CARD INTERFACE	
• PARALLEL PORT INTERFACE	
APPENDIX	22
• COPYRIGHT DISCLAIMER	
• FCC COMPLIANCE STATEMENTS	

INTRODUCTION

The CD ReWriter is a portable external CD-ROM kit, which consists of a low-power CD rewritable drive, a small 26 pin universal connector, and a cable for Parallel port (printer port). It is compatible with a computer's **Parallel Port** or **PC CARD** (PCMCIA) slot. This CD Rewriter can write to a CD-R (write-once) or a CD-RW (rewritable) disk and read other CD formats. The drive required an external power adapter (included). The CD ReWriter's dual connection gives you flexibility to add more storage space or transfer data between your notebook and/or your desktop computer.

SYSTEM REQUIREMENTS

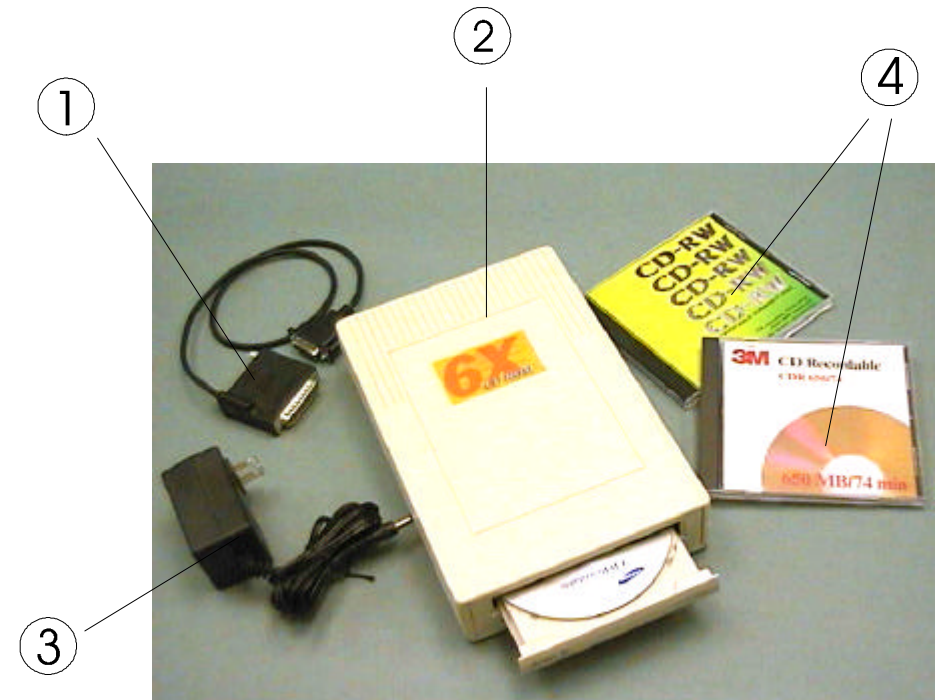
1. Notebook or desktop computer with a Parallel port (EPP or bi-directional)
If using the PC Card interface, the computer should have at least one PC Card (PCMCIA) 2.1 Type I or II slot.
2. Windows 95/98, Windows NT 4.0

FEATURES

- Data rate/write 300KB/sec double-speed
- Data rate/read vary from 600KB/sec (inner-track) to 900KB/sec (outer-track)
- Standard Parallel port connection. (EPP recommended)
- Complies with PC Card (PCMCIA) 2.1 specification
- Windows 95/98, Windows NT Ready
- Suitable for the following disk standard: CD R/RW, CD- DA, CD-ROM, CD-I, C—ROM XA, CD-Bridge, Photo CD, Video CD, CD Extra
- Power source: AC Adapter
 - Input 120-240 VAC 50-60 Hz 0.4 A.
 - Output 12 VDC 1000 mA.
- CD-RW disc and application software included.

PART NAMES AND FUNCTIONS

1. **Parallel Port interface cable**
Standard 25 pin Parallel port connector and 26 pin small connector.
2. **CD drive assembly**
CD drive with the power indicator, and DC input jack
3. **AC Adapter**
Input: 100-240 VAC, 50-60 Hz. 0.4A.
Output: +12 VDC/1000mA.
4. **Blank CD-RW and CD-R disk**



INSTALLATION

The installation procedures have two sections for each type of interface.

1. Parallel Port interface (Standard)
2. PC Card (PCMCIA) interface (optional)

Most notebook computer are equipped with a PCMCIA slot, however, most desktop computers are not and require an additional purchase of a PCMCIA adapter. The procedure includes hardware and software installation. Just follow along for your choice of interface.

INSTALLATION FOR PARALLEL PORT INTERFACE

HARDWARE INSTALLATION

Before you begin, make sure you turn OFF all power to your system before connecting the CD ReWriter to your computer.

1. Connect the DC Input adapter cable to the EXP CD drive assembly.
2. Connect one end of the Parallel cable to EXP CD (26 pin small connector), and connect the other end to computer parallel port. (standard 25 connector)
3. Plug-in the AC adapter to a working AC receptacle. **Turn on the CD ReWriter power before your turn on PC power.**

You are now ready to install the software.

NOTE

Always turn the CD Rewriter power on first

SOFTWARE INSTALLATION FOR WINDOWS 95/98

Check all the connection as stated in the "Hardware Installation" section. From the Desktop Click 'My Computer' icon, 'Control Panel' and then 'Add New Hardware'



1. Click "Next>" to begin.
2. When prompted whether to search for your new hardware, Select "No" and click "Next>".



3. Open "SCSI controllers". Click "Have Disk...".



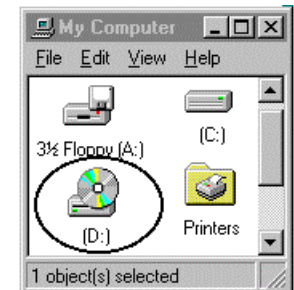
4. Insert Installation Diskette into the drive selected, then click "OK". If you're installing from a directory containing downloaded installation files, specify the full path of the directory and click "OK".
5. Select "F.I.T. Parallel-Port Trans-Series Win95/98 Driver", and click "Next>".
6. Click "Finish" to complete installation.



7. Remove Installation diskette.
8. Restart system, when prompted.

VERIFY YOUR INSTALLATION

From "desk top" click on "my computer" icon. There should be addition CD-ROM drive's icon displayed.



SOFTWARE INSTALLATION FOR WINDOWS NT 4.0

Due to user interface similarity between Windows 95 and Windows NT 4.0, the installation procedure is identical to the one for Windows 95.

INSTALLATION FOR PCMCIA INTERFACE (OPTIONAL)

NOTE: The PC Card interface is sold separately as an option component for the CD ReWriter. Please contact EXP, if you wish to purchase the PC Card interface kit.

HARDWARE INSTALLATION

If installing on a NT station, make sure you turn OFF all power to your system before connecting the CD ReWriter to your computer. However, you are allowed to install this device with the power on while using Windows 95/98, because this operation system support plug-and-play.

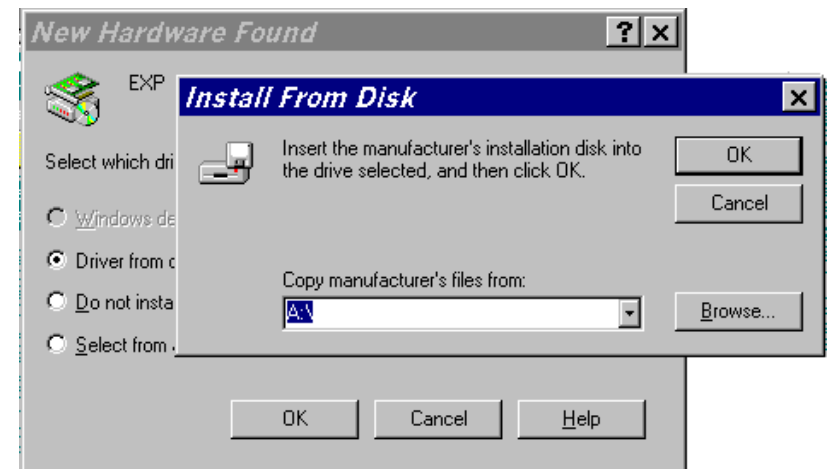
1. Connect the PCMCIA interface card to the CD ReWriter drive. Push firmly until the CD-RW connector is seated, and then tighten the two screws on the cable connector.
2. Place the CD drive in a horizontal position.
3. Consult your computer's documentation to locate the PCMCIA slot.
4. Align the PCMCIA interface card with the arrow sign pointing to the computer's slot. (Please note that the card is keyed to guide for proper orientation.)
5. Slowly insert the PCMCIA interface card into the slot and press firmly until the card is seated.
6. You are now ready to install the CD ReWriter device driver software.

SOFTWARE INSTALLATION FOR WINDOWS 95/98

The "New Hardware Found" dialog box* will appear when you insert the CD ReWriter card under Windows 95 for the **very first time**.



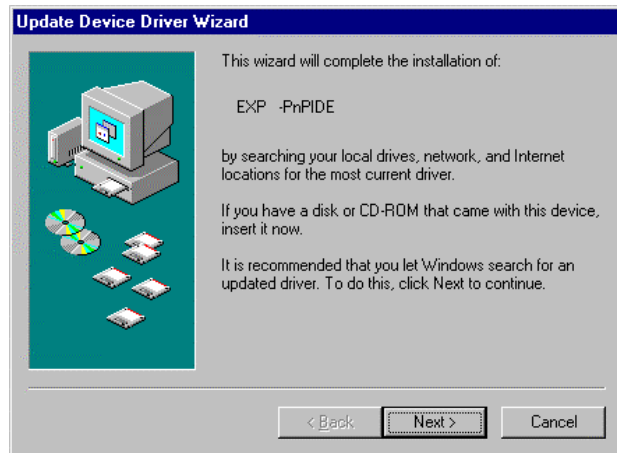
Select "Driver from disk provided by hardware manufacturer" and click on the OK button. Insert the CD ReWriter device driver disk into your floppy drive. (If the dialog box does not appear, please refer to the "Trouble Shooting" section.)



If a dialog box comes up select the CD-ROM , and then click OK.

* Your dialog box may be different from the one shown depending on your Windows 95 version

For users with a newer revision of Windows 95(95B or OSR2) or Windows 98, "Update Device Driver Wizard" box * will appear. Click on "Next" button, let Windows 95 search for a driver. Make sure that you insert the CD device driver diskette into your floppy drive.



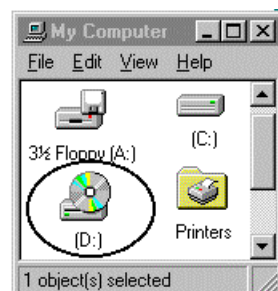
(If the dialog box does not appear, please refer to the "Trouble Shooting" section.)



Click on the "Finish" button.

VERIFY YOUR INSTALLATION

From the "Desk Top" click on "My Computer" icon. There should be an additional CD-ROM drive's icon displayed.



SOFTWARE INSTALLATION FOR WINDOWS NT 4.0

PC CARD Interface

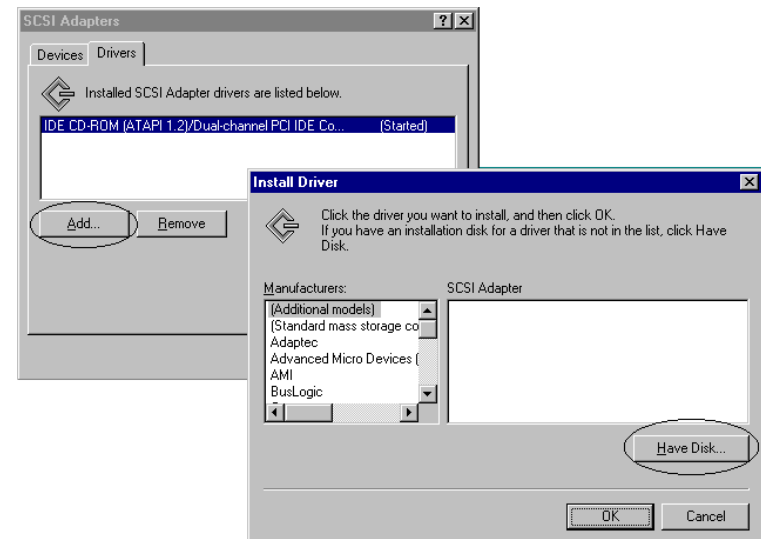
Currently there is no Plug-and-Play support for PC Card (PCMCIA) with the Windows NT 4.0. You can install the device driver without the PC Card, however after you finish the installation you should insert the PC Card before restarting the computer.

Follow the instructions to install the device driver:

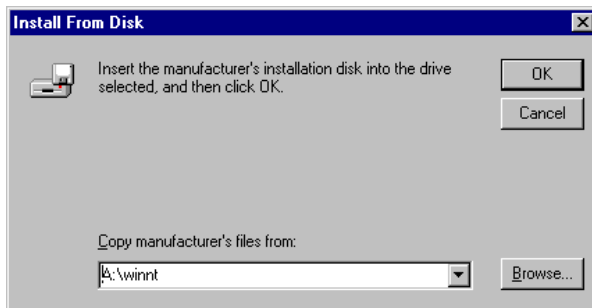
Click on My Computer > Control Panel > SCSI Adapters.



Choose the Drivers tab and the click on "Add". From the Install Driver, click the "Have Disk" button.

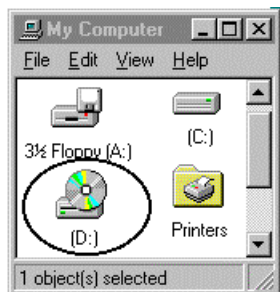


“Install from disk” dialog box will prompt for the device driver diskette. Either use “Browse” button or type in the path A:\winnt and then click OK to finishing the installation.



Now make sure to insert the CD PC Card into the PC Card slot before restarting the computer.

VERIFY YOUR INSTALLATION



After the computer boot up from “Desk Top” click on the “My Computer” icon. You should have an addition CD-ROM icon.

THINGS YOU NEED TO KNOW BEFORE MAKING YOUR CD-R(W)

Portable CD ReWriter comes with the CD-R and CD-RW utility program, make sure you follow the requirements below before running the program –

1. Set your Parallel port as a EPP port if using Parallel connection
2. Disconnect all network connection
3. Disable all background and application programs, for example, anti-virus, Norton utility, ICQ... etc.
4. Disable screen saver
5. If using a notebook, use AC power instead of battery power
6. Use a fast hard drive.
7. Don't do anything else with the computer while recording. Don't record from a file server.
8. Defragment your HD, especially if you're doing on-the-fly recording.
9. Record from an ISO image file rather than on-the-fly.
10. Keep your CD-R cool. Sometimes the drives fail when they overheat.
11. Keep CD-ReWriter read/write head cleaning.
12. Test before writing, if fail on testing, record at a slow speed - it takes longer to empty the buffer when recording at 1x.

NOTE:

For more update information, please visit our site at www.expnet.com

TROUBLE SHOOTING

PARALLEL PORT INTERFACE

Symptom: No additional drive icon in “My Computer”. The EXP CD driver installed without any incident.

Solution:

1. Check your cable connection, along with the AC adapter at the wall receptacle make sure there is no loose connection. The green LED on the front of EXP CD assembly should lit up.
2. Check your computer’s CMOS or BIOS setup. Some computers allow user to set printer port type either Standard, EPP Only or Bi-directional. A setting to “EPP Only” is preferred for a better performance.
3. Check if other hardware devices are connected to the same parallel port. Daisy-chaining with other hardware devices is NOT recommended. Other devices include but not limited to the following: security device (key, lock), audio port, parallel-to SCSI device, tape backup device, network device, A/B switch, printer-sharing device.
4. If you connect the equipment in daisy-chain fashion, always turn on the device farthest away from the computer first (in this case the EXP CD), then turn on the device next on the chain. Turn the computer last.

Symptom: The CD ReWriter starts to become excessively slow or behave differently on a battery-powered notebook computer.

Solution: If you are using a notebook or laptop computer, without the AC adapter, the performance of the parallel port may become sluggish and unreliable if the battery runs low. Try reconnecting the AC adapter to your computer or recharging the battery.

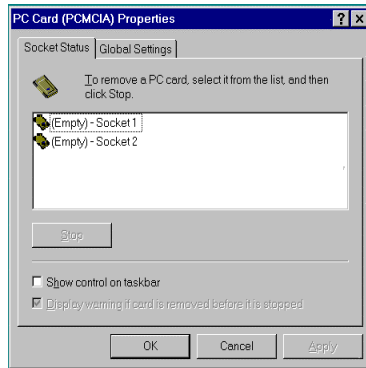
Symptom: The CD ReWriter starts to become excessively slow or does not work at all.

Solution: The parallel port on your machine may be set to a number of different modes, standard, Bi-directional, EPP or ECP. These different settings can effect the performance of the drive. In some cases, the standard setting will even shut off signals the EXP CD needs, while if this same port is set to Bi-directional or EPP may be obtain an better performance.

PCMCIA(PC CARD) INTERFACE

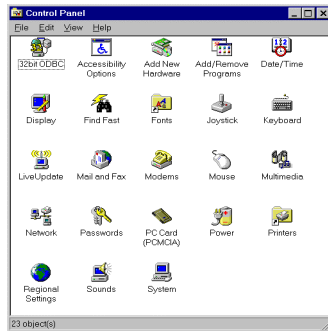
Symptom: No “New Hardware Found” dialog box display.

Solution: 1. The EXP card is NOT fully inserted.



The card status will show empty if the Windows PCMCIA driver did not detect any card. Sometimes, there is another dialog box displayed, and the PC Card Properties still show empty. You may need to disable such a program (i.e. CardWork, CardWiz). Consult your notebook User Manual.

2. The 32-bit card support is NOT enabled.



To enable the 32-bit support, click on “Start”, “Settings”, “Control Panel” from the “Control Panel” folder Click on PC Card (PCMCIA)

If you see the screen below, it means the PCMCIA device driver is not using 32-Bit Card Support. Follow the screen instructions and accept all the default setting. You will be asked to restart the computer after finishing.



After the computer restarts, you can insert the EXP CD card, at which time the “New Hardware Found” or “Update Device Driver Wizard” dialog box will be displayed.

3. No PC Card (PCMCIA) icon in Control Panel

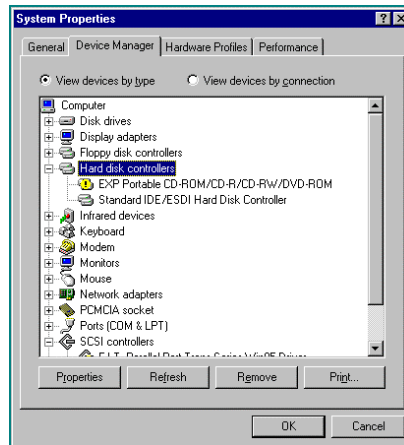
If the PCMCIA Socket is not found, then you must add a PCMCIA socket to your system. Please click on the “Add New Hardware” icon in the Control Panel folder and select “PCMCIA socket”. Select the appropriate type of PCMCIA Controller that matches yours (call your notebook manufacturer for detail) and follow the on-screen instruction.

Symptom: No additional drive icon in “My Computer”.
The EXP CD driver installed without any incident.

Solution: 1. System resources for the EXP CD are not available.
Click on “Start”, “Settings”, “Control Panel” from the “Control Panel” folder Click on “System” then “Device Manager”

The EXP entry may have a yellow circle with an exclamation point.

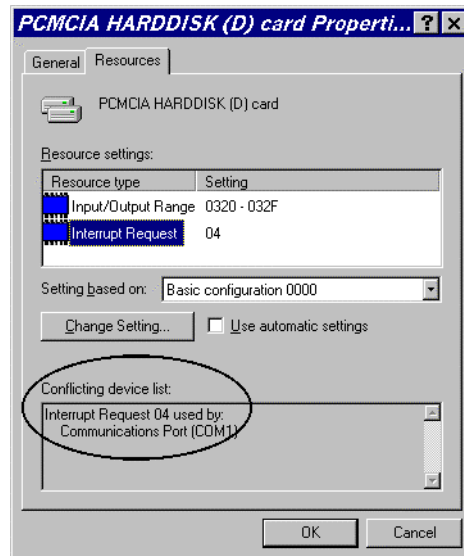
This is an indication that the EXP CD did not working properly.



Double click on the EXP entry line and then select “Resources”
You can make some change to the following entry:

‘Basic Configuration xxxx’, I/O Range, and Interrupt request.

During resources changing, observe the “Conflicting Device List”. You should select the resource(s), which the “Conflicting device list” shows **“No Conflict”**



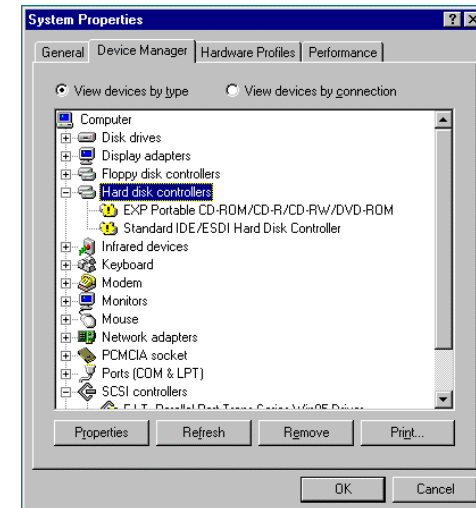
2. The Device Manager shows resource for the EXP CD is available and there is no conflicting device.

In some computer, the I/O Range XXX, Interrupt Request 15 may be use by a built-in secondary IDE controller. Try changing the interrupt to 9,10 or 11. You can also try different I/O addresses.

3. The EXP entry may have a yellow circle with an exclamation point. Device Manager shows resource for the EXP CD is available and there is no conflicting device.

Check all connection to the EXP CD drive assembly, such as AC Adapter. Your notebook PC Card sockets may not have enough power for the EXP CD. If you already connect the AC adapter, make sure to secure all connectors and the adapter plug into a good AC out let.

4. The EXP CD and the ‘Standard IDE/ESDI Hard Disk Controller’ entry have a yellow circle with an exclamation point.



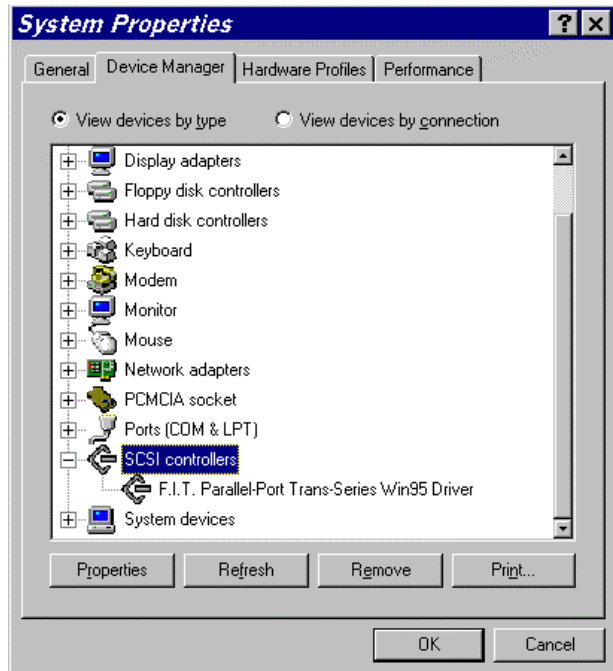
Your notebook may have been infected with some kind of computer virus. The virus disabled Windows 95 32-bit device driver for the hard disk. The EXP CD requires the driver for its operation. Check the “Performance” tab to confirm the symptom.

You need to run an anti-virus program first, once the 32-bit driver is running the EXP CD will be installed.

REMOVING OR RE-INSTALLING THE DRIVER

PARALLEL PORT INTERFACE

Go to “My Computer” icon, “Control Panel”, “System”, “Device Manager” Click on “SCSI Controller”. The EXP CD should be listed



To remove EXP CD-ROM.

- Click on the EXP entry line (F.I.T. ...) then clickat “Remove” button. You may need to restart the computer to complete the task.

To reinstall EXP CD.

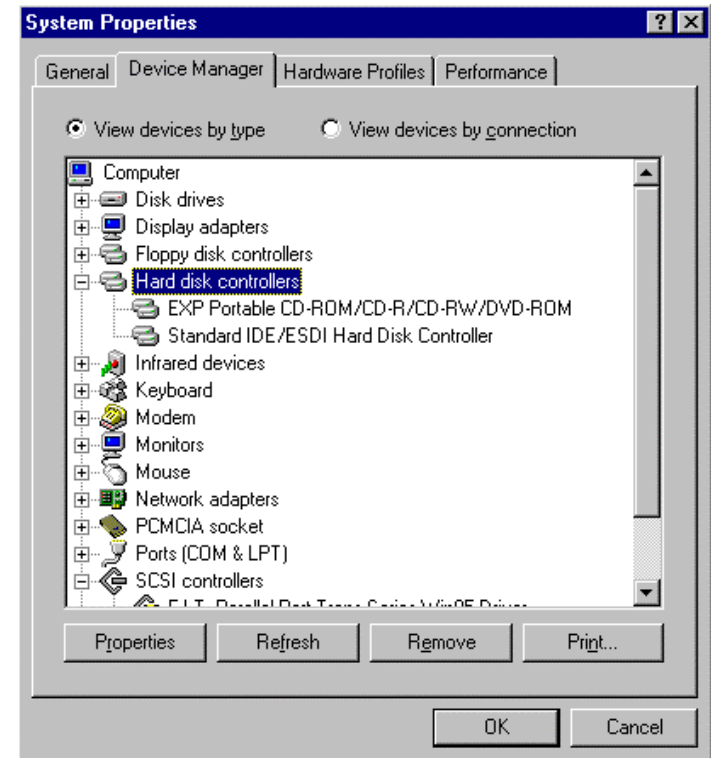
- Click at “Refresh” button. Either the “New Hardware Found”or “Update Device Driver Wizard” will be displayed.

Follow the instructions on Installation for “Parallel Port Interface” section.

PCMCIA INTERFACE (OPTIONAL)

If you need to remove or reinstall the driver, make sure the EXP CD-ROM disk card is inserted.

- Go to “My Computer” icon, then “Control Panel”, then “System”, then “ Device Manager” Click on “Hard Disk Controller”. The EXP CD should be listed



To remove EXP CD.

- Click on the EXP entry line, then click at “Remove” button. You may need to restart the computer to complete the task.

To reinstall EXP CD.

- Click on “Refresh” button, either the “New Hardware Found” or “Update Device Driver Wizard” will be displayed.

Follow the instructions on “Installation for PCMCIA Interface” section.

APPENDIX A

FCC COMPLIANCE STATEMENTS

This equipment has been tested and found to comply with the limits for a Class B digital device, pursuant to Part 15 of the FCC Rules. These limits are designed to provide reasonable protection against harmful interference in a residential installation. This equipment generates, uses and can radiate radio frequency energy and, if not installed and used in accordance with the instructions, may cause harmful interference to radio communications. However, there is no guarantee that interference will not occur in a particular installation. If this equipment does cause harmful interference to radio or television reception, which can be determined by turning the equipment off and on, the user is encouraged to try to correct the interference by one or more of the following measures:

Reorient or relocate the receiving antenna.

Increase the Distance between the equipment and receiver.

Connect the equipment into an outlet on a circuit different from that to which the receiver is connected.

Consult the dealer or an experienced radio/TV technician for help.

CAUTION

CHANGE OR MODIFICATIONS NOT EXPRESSLY APPROVED BY
PARTY RESPONSIBLE FOR COMPLIANCE COULD VOID THE USER'S
AUTHORITY TO OPERATE THE EQUIPMENT.