

# CUBE ARRAY

**C4**  
Powerbank

User Manual

[cubearray.com](http://cubearray.com)

## Instructions



Thank you for using our products. Please read the instructions carefully before using the product. Follow the instructions and use it properly.

### Charging C4 (Figure 1/ Figure 2)

1. Use original USB data cable and connect micro USB to micro USB port on C4.
2. Connect USB cable to USB port on DC5V USB charger or computer. If LED signal flickers, it means C4 is being charged.
3. Four LED power indicators lights on, indicates that C4 is fully charged.



Please pull out power supply after recharging fully.

### Charging digital product with C4 (Figure 3)

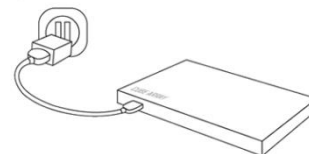
1. Check if the charging voltage of the digital product is compatible with the DC5V output voltage of C4.
2. Use the digital product's original cable, and connect one end to the digital product, the other end to C4. Press the button, LED power indicators lights on for 5 seconds then light off, the digital product will be charged automatically.

### Check residual capacity

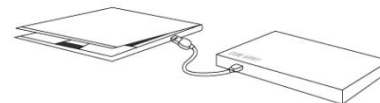
Press the button, LED power indicators lights on for 5 seconds then light off.

## Instructions figures

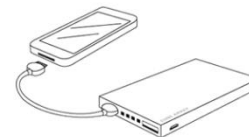
- 1 Charge C4 with AC adapter (AC adapter is not bundled)



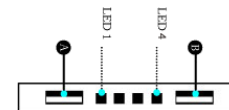
- 2 Charge C4 by connecting it to USB port on computer



- 3 Charging digital products using C4

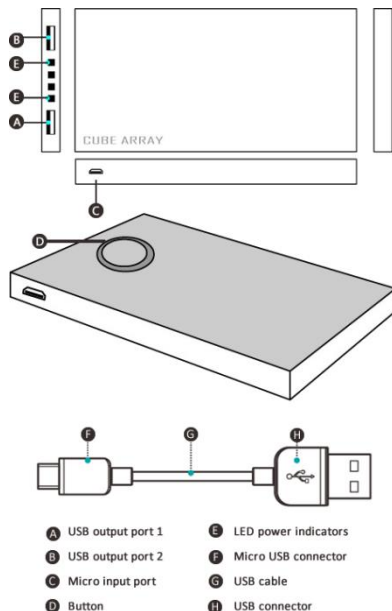


## Residual capacity indicator



LED Signal	Battery
1st signal lights up	0~25%
1st, 2nd signals light up	25~50%
1st, 2nd, 3rd signals light up	50~75%
1st, 2nd, 3rd and 4th signals light	75~100%

## Product appearance



## Accessories



USB cable



User's manual

## Product features

Supporting most DC5V USB input smartphones, tablets, MP3, MP4 and other digital products charging.



- 8000mAh super-high Lithium-Polymer battery
- 9.9mm depth, 180g weight
- Slip and Shock-proof and extremely durable; take with you without worries
- Can charge all 5V digital devices, perfectly matches all smartphones and most tablets
- Intelligent multi-level protection ensures safety and reliability
- Highly efficient voltage booster circuit, actual power output is 10% higher than ordinary products
- Alloy plastic structure ensures ruggedness
- Smart sleep mode helps save power and prolongs endurance
- Two USB ports allow simultaneous charging of two smartphones

## Specifications

Name	C4	Model	PB-C4
Capacity	8000mAh	Weight	~180g
Input	DC5V 1A MAX		
Output	Output 1: DC5V 1A MAX; Output 2: DC5V 2.1A MAX		
Size	~L 146 x W 70.5 x H 9.9mm		
Charging time	8 hours		
Battery type	Lithium-Polymer		
Ambient temperature for Use	Charging 0°C~45°C; discharging - 10°C~60°C		
Environment for Storage	-20°C~60°C		
The electrical core will have 85% capacity left after 500 cycles. (From fully charged to fully discharged is a cycle)			

## Cautions

1. Charge the product itself before using it to charge other products.
2. Do not place or use the product in very hot or humid environment; do not place or use it in direct sunlight (ambient temperature for use: charging 0°C~45°C; discharging - 10°C~60°C; ambient temperature for storage -20°C~60°C).
3. Do not throw this product into fire or water, so as to avoid possible fire and explosion.
4. Please keep the product out of the reach of children.
5. Do not use it when nobody is around.
6. Do not dismantle or assemble the product yourself; the product does not have any parts that need users to dismantle, assembly or maintain themselves.
7. Do not shake it, tap it or hit it.
8. Do not use it if any liquid leaks out of the product. If the liquid goes into your eyes, do not rub your eyes, but quickly flush your eyes with running water. If necessary, go to see a doctor.
9. It is normal that the product gets hot under proper operations. Please use with care when using or finishing using the product.
10. Original transmission cables and connectors are required for all operations. Use of non-original products may lead to severe or deadly injuries or monetary loss.
11. Do not use paper or other objects to cover or shield the product, which may affect heat dissipation and cooling.
12. Check the voltage before using the product, so as to avoid unnecessary damage to the product caused by improper use under inaccurate voltage or power.
13. Please charge and discharge the product once every three months. if it is not used for a long time. This can ensure the life cycle of the product.
14. Once discharged, please recharge the product fully so as to prepare for later use, for example, for charging digital products.
15. Unplug the power cable when not using the product, so as to avoid injury or property loss.