

## About this User's Manual

This user's manual is designed to let you easily find the information you need to get the most from your notebook.

- Introduces you to the features of your notebook.
- Gives you useful details on using your notebook.
- Tells you how to look after your notebook, whether at home or traveling.
- Talks about PC Card peripherals and how to use them.
- Goes into more detail about power management and explains how to conserve power while on the move.
- Introduces you to BIOS, the nervous system of your computer, and how to change its fundamental settings.

There is no need to read the manual from the beginning to end. Simply find your way to the section that interests you using the index, or browse through the manual.

You will come across the following icons in the manual:



*Helpful pointers and tricks to get more from your notebook*



*To help you note and avoid possible damage to your notebook's hardware or software, or loss of your work*



*Points out possible damage to property, personal injury or death*

Information in this document is subject to change without notice.

© Compal Electronics, Inc. 2006. All rights reserved.

Trademarks used in this document: Microsoft and Windows are registered trademarks of Microsoft Corporation.

Other trademarks and trade names may be used in this document to refer to either the entities claiming the marks and names or their products.



# Contents

---

<b>Safety Instructions</b> .....	<b>i</b>
<b>Modem Regulatory Notice</b> .....	<b>v</b>
<b>Specifications</b> .....	<b>x</b>

## Chapter 1 Introducing Your Notebook

<b>1.1 Front Side</b> .....	<b>1-1</b>
1.1.1 LCD Module Latch.....	1-2
1.1.2 Built-in Camera.....	1-2
1.1.3 Display.....	1-2
1.1.4 Power Button.....	1-2
1.1.5 Easy Buttons .....	1-2
1.1.6 Media Office Buttons .....	1-3
1.1.7 Keyboard .....	1-4
1.1.8 Keyboard Status Lights.....	1-4
1.1.9 Touch Pad .....	1-4
1.1.10 Touch Pad Buttons .....	1-5
1.1.11 Finger Printer.....	1-5
1.1.12 Multiple Digital Media Card Slot.....	1-6
1.1.13 Wireless Communication Switch .....	1-6
1.1.14 Device Status Indicators / Power Status .....	1-6
<b>1.2 Right Side</b> .....	<b>1-7</b>
1.2.1 Audio Ports.....	1-8
1.2.2 USB Ports.....	1-8
1.2.3 Optical Media Drive .....	1-8
1.2.4 VGA Port .....	1-8
<b>1.3 Left Side</b> .....	<b>1-9</b>
1.3.1 USB Port .....	1-10
1.3.2 LAN Jack .....	1-10
1.3.3 PC Card Slot .....	1-10
1.3.4 Express Card Slot.....	1-10
<b>1.4 Back Side</b> .....	<b>1-11</b>
1.4.1 S-Video out Port .....	1-12
1.4.2 Modem Jack.....	1-12
1.4.3 AC Adapter Connector.....	1-12
<b>1.5 Bottom Side</b> .....	<b>1-13</b>
1.5.1 Battery Pack.....	1-14
1.5.2 Battery Release Latch .....	1-14

## Chapter 2 Operating Your Notebook

<b>2.1</b>	<b>Turning Your Notebook On and Off</b>	<b>2-1</b>
2.1.1	Turning Your Notebook On	2-2
2.1.2	Turning Your Notebook Off	2-2
2.1.3	Logging Off	2-2
2.1.4	Adding User Accounts	2-3
2.1.5	Standby Mode	2-3
<b>2.2</b>	<b>Tips for Using Windows</b>	<b>2-5</b>
2.2.1	Microsoft Windows Vista Help	2-6
2.2.2	Windows Desktop	2-7
2.2.3	Desktop Cleanup Wizard	2-8
2.2.4	Start Button	2-8
2.2.5	Taskbar	2-9
2.2.6	Notification Area (System Tray)	2-9
2.2.7	Recycle Bin	2-9
2.2.8	Control Panel	2-10
2.2.9	My Computer	2-10
<b>2.3</b>	<b>Keyboard and Touch Pad</b>	<b>2-11</b>
2.3.1	Numeric Keypad	2-12
2.3.2	Keyboard Shortcuts	2-12
2.3.3	Windows Logo Key Functions	2-13
2.3.4	StickyKeys	2-14
2.3.5	Touch Pad	2-16
2.3.6	Customizing the Touch Pad	2-16
2.3.7	Finger Printer	2-17
<b>2.4</b>	<b>Personalizing Your Desktop</b>	<b>2-19</b>
2.4.1	Choosing a Wallpaper	2-20
2.4.2	Choosing a Screen Saver	2-20
2.4.3	Choosing a Desktop Theme	2-20
2.4.4	Creating a Shortcut on the Desktop	2-20
<b>2.5</b>	<b>Display</b>	<b>2-21</b>
2.5.1	Adjusting Brightness	2-22
2.5.2	Using an External Monitor or Television	2-22
2.5.3	Setting Display Resolution	2-22
<b>2.6</b>	<b>Networks</b>	<b>2-23</b>
<b>2.7</b>	<b>Managing Programs</b>	<b>2-25</b>
2.7.1	Running Programs	2-26
2.7.2	Adding Software	2-26
2.7.3	Removing Software	2-27

<b>2.8</b>	<b>Managing Files .....</b>	<b>2-29</b>
2.8.1	Updating Antivirus Software .....	2-30
2.8.2	Backing Up Files .....	2-30
2.8.3	Finding Files .....	2-30
2.8.4	Copying a File on the Hard Drive .....	2-30
2.8.5	Copying a File to a Floppy Disk.....	2-31
2.8.6	Moving Files .....	2-31
2.8.7	Renaming Files .....	2-31
2.8.8	Deleting Files.....	2-31
2.8.9	Emptying the Recycle Bin.....	2-32
2.8.10	Retrieving Files From the Recycle Bin.....	2-32
<b>2.9</b>	<b>Playing CDs and Movies.....</b>	<b>2-33</b>
2.9.1	Inserting Discs.....	2-34
2.9.2	Adjusting Volume.....	2-34
2.9.3	Adjusting the Picture.....	2-34

## Chapter 3 Caring for Your Notebook

<b>3.1</b>	<b>Caring for Your Notebook.....</b>	<b>3-1</b>
3.1.1	Cleaning Your Notebook and Keyboard.....	3-2
3.1.2	Cleaning the Display.....	3-2
3.1.3	Cleaning the Touch Pad .....	3-2
3.1.4	Cleaning the CD/DVD Drive .....	3-2
3.1.5	Precautions .....	3-3
<b>3.2</b>	<b>Traveling .....</b>	<b>3-5</b>
3.2.1	Identifying Your Notebook.....	3-6
3.2.2	Packing Your Notebook .....	3-6
3.2.3	Setting a Password.....	3-6
3.2.4	Travel Tips .....	3-7
3.2.5	If Your Notebook Is Lost or Stolen .....	3-7

## Chapter 4 Peripherals

<b>4.1</b>	<b>PC Cards and Express Cards.....</b>	<b>4-1</b>
4.1.1	PC Card Types .....	4-2
4.1.2	Extended PC Cards.....	4-2
4.1.3	Installing PC Cards.....	4-2
4.1.4	Removing PC Cards.....	4-3
4.1.5	Express Card Types .....	4-3
4.1.6	Installing and Removing Express Cards.....	4-3
<b>4.2</b>	<b>Adding and Removing SD/MMC/MS Cards .....</b>	<b>4-4</b>
<b>4.3</b>	<b>Memory Modules .....</b>	<b>4-5</b>

## Chapter 5 The Power System

<b>5.1</b>	<b>Power Management .....</b>	<b>5-1</b>
5.1.1	Power Management Modes.....	5-2
5.1.2	Power Options Properties.....	5-4
5.1.3	SpeedStep .....	5-6
<b>5.2</b>	<b>Battery.....</b>	<b>5-7</b>
5.2.1	Battery Performance.....	5-8
5.2.2	Checking the Battery Charge .....	5-8
5.2.3	Power Meter .....	5-8
5.2.4	Low-Battery Warning .....	5-9
5.2.5	Charging the Battery.....	5-9
5.2.6	Removing the Battery .....	5-9
5.2.7	Installing a Battery .....	5-10
5.2.8	Storing a Battery .....	5-10
5.2.9	Working With Extra Battery Packs.....	5-10
5.2.10	Maximizing Battery Life .....	5-10

## Chapter 6 The BIOS Setup Program

<b>6.1</b>	<b>Introduction .....</b>	<b>6-1</b>
<b>6.2</b>	<b>Navigating through the BIOS Setup Program.....</b>	<b>6-2</b>
6.2.1	Accessing the BIOS Setup Program .....	6-3
6.2.2	Launching Submenus.....	6-4
6.2.3	Saving Changes and Exiting the Setup Program .....	6-4
<b>6.3</b>	<b>The Main Menu .....</b>	<b>6-5</b>
<b>6.4</b>	<b>The Advanced Menu .....</b>	<b>6-7</b>
<b>6.5</b>	<b>The Security Menu .....</b>	<b>6-8</b>
<b>6.6</b>	<b>The Others Menu.....</b>	<b>6-12</b>
<b>6.7</b>	<b>The Boot Menu .....</b>	<b>6-13</b>
<b>6.8</b>	<b>The Exit Menu.....</b>	<b>6-14</b>

## Safety Instructions

Use the following safety guidelines to help protect yourself and your computer.

### **General Warnings**

- Do not operate your portable computer for an extended period of time with the base resting directly on your body. With extended operation, heat can potentially build up in the base. Allowing sustained contact with the skin could cause discomfort or, eventually, a burn.
- Do not attempt to service the computer yourself. Always follow installation instructions closely.
- To avoid personal injury from electric shock or fire:
  - Completely power down the computer when replacing memory modules, cleaning the computer, its components, or chassis, or performing operations requiring similar steps. To do this, first turn the power off at the power switch, remove the battery, then disconnect the AC adapter from the electrical outlet or from any other type of external power source, such as an external battery.
  - Do not operate the computer near water, for example, near a bathtub, kitchen sink or laundry tub, in a wet basement, by a swimming pool, or in the rain.
  - Do not connect or disconnect any cables or perform maintenance or reconfiguration of this product during an electrical storm.
  - Avoid using the wired modem or LAN during an electrical storm, as a remote risk of electric shock from lightning exists.
  - Do not push objects into air vents or openings of your computer or accessories. Doing so can short out interior components and may cause fire or electric shock.
  - When installing memory modules, ground yourself by touching a grounded conductive surface, such as a device with a grounded plug. Avoid touching the pins and leads on the memory module or internal circuitry of the computer.
- When setting up the computer for work, place it on a level surface.
- Handle components with care. Hold a component such as a memory module by its edges, not its pins.

- If the battery pack leaks and the fluid get in your eyes, do not rub them. Instead, rinse your eyes with clean running water and immediately seek medical attention. Otherwise, eye injury may result.
- If acid leaking from the battery pack contacts your skin or clothing, immediately wash it away with running water. Otherwise, skin inflammation can occur.
- Operate the computer at the recommended temperature range of +5°C to +35°C (+41°F to +95°F). Store it at a temperature of -20°C to +60°C (+4°F to +140°F).

### ***Power Cord & Adapter Warnings***

- Read the installation instructions before connecting to the power supply.
- Power cord sets for use in other countries must meet the requirements of that country. Use the appropriate AC adapter and power cord for your locale.
- If you use an extension cable with your AC adapter, ensure that the total ampere rating of the products plugged into the extension cable does not exceed the ampere rating of the extension cable. Also, ensure that the total rating of all products plugged into the wall outlet does not exceed the fuse rating.
- When using your power cord, make sure to position it around objects so it will not be cut or punctured.
- When you disconnect a cable, pull on its connector on its strain relief loop, not on the cable itself. As you pull out the connector, keep it evenly aligned to avoid bending any connector pins. Also, before you connect a cable make sure both connectors are correctly oriented and aligned.
- Be sure that nothing rests on your AC adapter's power cable and that the cable is not located where it can be tripped over or stepped on.
- Use only the AC adapters that are approved for use with this computer. Use of another type of adapter may risk fire or explosion.
- Before you connect the computer to a power source, ensure that the voltage rating of the AC adapter matches that of the available power source.
  - 115 V/60 Hz in most of North and South America and some Far Eastern countries such as South Korea and Taiwan.
  - 100 V/50 Hz in eastern Japan and 100 V/60Hz in western Japan.
  - 230 V/50 Hz in most of Europe, the Middle East, and the Far East.



- Place the AC adapter in a ventilated area, such as a desktop or on the floor, when you use it to run the computer or to charge the battery. Do not cover the AC adapter with papers or other items that will reduce cooling; also, do not use the AC adapter while it is inside a carrying case.
- To remove power from the computer, turn it off, remove the battery, and disconnect the AC adapter from the electrical outlet.
- Disconnect power cords and cables by grasping the connector, not by pulling on the cable itself. As you pull out the connector, keep it evenly aligned to avoid bending any connector pins. Before you connect a cable, make sure both connectors are correctly aligned.

### ***Battery Pack Warnings***

- Do not carry a battery in your pocket, purse, or other container where metal objects (such as car keys) could short-circuit the battery terminals. The resulting excessive current flow can cause extremely high temperatures and may result in damage from burns.
- Danger of explosion may occur if battery is incorrectly replaced. Replace only with the same or equivalent type battery recommended by the manufacturer.
- Do not dispose of batteries in a fire. They may explode. Check with local authorities for disposal instructions.
- Do not use or leave the battery pack near a heat source. Heat can melt the insulation and damage other safety features, possibly leading it to leak acid, overheat, emit smoke, burst and/or ignite.
- Do not immerse the battery pack in water or allow it to get wet. Its protective features can be damaged. Abnormal chemical reactions may occur, possibly leading it to leak acid, overheat, emit smoke, burst and/or ignite.
- Do not crush, disassemble, puncture, or incinerate short external contacts of battery pack.
- Do not connect the positive (+) and negative (-) terminals with a metal object such as wire. Short-circuiting may occur, leading the battery pack to leak acid, overheat, emit smoke, burst and/or ignite.
- Do not use an apparently deformed or damaged battery pack, which may leak acid, overheat, emit smoke, burst and/or ignite.
- If the battery pack leaks, gives off a bad odor, generates heat, becomes discolored or deformed, or in any way appears abnormal during use, recharging or storage, immediately remove it from the computer or charger and stop using it.

### ***Battery Pack Disposal***

- Dispose of the lithium ion battery packs only at approved disposal sites. To locate an appropriate site, contact the solid waste disposal officials where you live or look for a rechargeable battery recycling website that lists disposal locations near you.
- Do not dispose of battery packs in a fire, throw them in a trash receptacle, put them in a recycling bin not intended for their disposal, or otherwise discard them in a manner that may result in their being hazardous to the environment.

### ***Internal Modem Warnings***

**CAUTION:** When using your telephone equipment, basic safety precautions should always be followed to reduce the risk of fire, electric shock and injury to persons, including the following:

- The modem cable you connect to your computer should have a minimum wire size of 26 AWG (American wire gauge) and an UL-compliant RJ-11 modular plug.
- Avoid using a telephone (other than a cordless type) during an electrical storm. There may be a remote risk of electric shock from lightning.
- Do not use the telephone to report a gas leak in the vicinity of the leak.
- Do not plug a modem connector (RJ-11) into a network connection (RJ-45). This may damage the connector.

## Modem Regulatory Notice

### Federal Communication Commission PART 68 Warning

This equipment complies with Part 68 of the FCC rules. Located on the bottom side of the modem is a label that contains, among other information, the FCC Registration Number and Ringer Equipment Number (REN) for this equipment. Upon requested, you must provide this information to your telephone company.

If your telephone equipment causes harm to the telephone network, the local telephone company may discontinue your service temporarily. If possible they will notify you in advance. But, if advance notice is not practical, you will be notified as soon as possible. You will also be informed of your right to file a complaint with the FCC.

Your telephone company may make changes in this facilities, equipment, operations, or procedures that could affect the proper functioning of your equipment. If they do, you will be notified in advance to give you an opportunity to maintain uninterrupted telephone service.

If this equipment should fail to operate properly, disconnect the equipment from the phone line to determine if it is causing the problem. If the problem is with the equipment, discontinue use and contact your dealer or vendor.

### **TBR21**

This equipment has been approved [Council Decision 98/482/EC – “TBR21”] for pan-European single terminal connection to the Public Switched Telephone Network (PSTN). However, due to differences between the individual PSTNs provided in different countries, the approval does not, of itself, give an unconditional assurance of successful operation on every PSTN termination point. In the event of problems, you should contact your equipment supplier in the first instance.

## **Important Safety Instructions**

Read these instructions carefully. Save these instructions for future reference.

1. Follow all warnings and instructions marked on the product.
2. Unplug this product from the wall outlet before cleaning. Do not use liquid cleaners or aerosol cleaners. Use a damp cloth for cleaning.
3. Do not place this product on an unstable cart, stand, or table. The product may fall, causing serious damage to the product.
4. Slots and openings in the cabinet and the back or bottom are provided for ventilation; to ensure reliable operation of the product and to protect it from overheating, these openings must not be blocked or covered. The openings should never be blocked by placing the product on a bed, sofa, rug, or other similar surface. This product should never be placed near or over a radiator or a heat register, or in a built-in installation unless proper ventilation is provided.
5. This product should be operated from the type of power indicated on the marking label. If you are not sure of the type of power available, consult your dealer or local power company.
6. Do not allow anything to rest on the power cord. Do not locate this product where persons will walk on the cord.
7. Never spill liquid of any kind on the product.
8. Do not attempt to service this product yourself, as opening or removing covers may expose you to dangerous voltage points or other risks. Refer all servicing to qualified service personnel.
9. Unplug this product from the wall outlet and refer servicing to qualified service personnel under the following conditions:
  - a. When the power cord or plug is damaged or frayed.
  - b. If liquid has been spilled into the product.
  - c. If the product has been exposed to rain or water.
  - d. If the product does not operate normally when the operating instructions are followed. Adjust only those controls that are covered by the operating instructions since improper adjustment of other controls may result in damage and will often require extension work by a qualified technician to restore the product to normal condition.
  - e. If the product has been dropped or the cabinet has been damaged.
  - f. If the product exhibits a distinct change in performance, indicating a need for service.

## **EMC Regulatory Information**

This product is designed and tested to comply with the following related EMC (Electromagnetic compatibility) standards.

## **FCC Notice**

### **“Declaration of Conformity Information”**

This equipment has been tested and found to comply with the limits for a Class B digital device, pursuant to Part 15 of the FCC Rules. These limits are designed to provide reasonable protection against harmful interference in a residential installation.

This equipment generates, uses and can radiate radio frequency energy and, if not installed and used in accordance with the instructions, may cause harmful interference to radio communications. However, there is no guarantee that interference will not occur in a particular installation. If this equipment does cause harmful interference to radio or television reception, which can be determined by turning the equipment off and on, the user is encouraged to try to correct the interference by one of following measures:

- Reorient or relocate the receiving antenna.
- Increase the separation between the equipment and receiver.
- Connect the equipment into an outlet on a circuit different from that to which the receiver is connected.
- Consult the dealer or an experienced radio/TV technician for help.

This device complies with Part 15 of the FCC Rules. Operation is subject to the following two conditions:

- (1) This device may not cause harmful interference.
- (2) This device must accept any interference received, including interference that may cause undesired operation.

### **Canadian Notice (Canada Only)**

This digital apparatus does not exceed the Class B limits for radio noise emissions from digital apparatus as set out in the Radio Interference Regulation of the Canadian Department of Communications.

This Class B digital apparatus complies with Canadian ICES-003.

Cet appareil numérique de la classe B est conforme à la norme NMB-003 du Canada.

### **CE Notice (European Union)**

#### **EU Declaration of Conformity**

The product conforms to the following standards:

Supplementary Information: “The product complies with the requirements of the Low Voltage Directive 73/23/EEC and the EMC Directive 89/336/EEC and/or the R&TTE Directive 1999/05/EEC.”



This product is carrying the CE-Mark in accordance with the related European Directives.

### **BSMI Notice (Taiwan Only)**


Most Compal computer products are classified by the Bureau of Standards, Meteorology and Inspection (BSMI) as Class B information technology equipment (ITE).



R 31199

The symbol that must be marked on the product indicates the product complies with BSMI standard.

## BSMI 通告 (僅限於台灣地區)

如果您在電腦的底部、側面或背面板上找到一個  標誌，則適用於以下部份的相關規定：

此設備經測試證明符合BSMI(經濟部標準檢驗局)之乙類數位裝置的限定規定。這些限制的目的是爲了在住宅區安裝時，能防止有害的干擾，提供合理的保護。此設備會產生，使用並散發射頻能量；如果未遵照製造廠商的指導手冊來安裝和使用，可能會干擾無線電通訊。但是，這並不保證在個別的安裝中不會產生干擾。您可以透過關閉和開啓此設備來判斷它是否會對廣播和電視收訊造成干擾；如果確實如此，我們建議您嘗試以下列一種或多種方法來排除干擾：

- 重新調整天線的接收方向或重新放置接收天線。
- 增加設備與接收器的距離。
- 將設備連接至不同的插座，使設備與接收器連接在不同的電路上。
- 請向經銷商或有經驗的無線電/電視技術人員查詢，以獲得幫助。

## Macrovision License of Notice

This product incorporates copyright protection technology that is protected by methods and claims of certain U.S. patents and other intellectual rights owned by Macrovision Corporation, and other rights owners. Use of this copyright protection technology must be authorized by Macrovision Corporation and is intended for home and other limited viewing uses only unless authorized by Macrovision Corporation. Reverse engineering of disassembly is prohibited.

## Specifications

### CPU

- Intel Yonah Processors FSB 667 MHz / 2MB L2
- Dual Core / Single Core
- Up to Intel's roadmap

### Chipset

- Intel Calistoga-PM (945PM) for discrete video
- ICH7-M
- 533/667MHz FSB support

### Memory

- Supports DDR-II 533/667MHz
- No on-board memory
- Two SO-DIMM with 512MB/1GB modules
- Upgradable to 2GB memory by two SO-DIMM
- Easy install from bottom side

### VGA Board

- Nvidia G73M
- 256MB memory

### Display

- Supports 14.1" WXGA TFT color LCD

### Keyboard

- 86/87/90 keys support with 101/102 key emulation without stick-point
- 2.5+0-0.3mm stroke 5.1±0.3mm total height
- Supports Windows key and Application keys
- Multi-language support

### HDD

- 9.5mm height, 2.5" HDD
- Easily removable
- PCI Bus Master Enhanced IDE
- Supports SATA 1.5Gb/s (150MB/s)



## Select Bay Devices

- 5.25" 12.7mm height 24X DVD/CD-RW Combo
- 5.25" 12.7mm height 8X DVD-Super Multi devices

## Options

- 512MB/1GB SO-DIMM DDR-II
- Li-Ion Battery pack
- PCI-E Wireless module
- Bluetooth Ver. 2.0 module with USB2.0 interface

## Pointing Device

- Touch Pad with two buttons
  - Left button
  - Right button
- Finger printer

## I/O Ports

- USB 2.0 ports x 3
- VGA port, 15 pins x 1
- S-Video out port x 1
- Microphone-in x 1
- Headphone-out jack x 1
- DC-in jack x 1
- RJ-11 jack for 56Kbps V.92 Modem (US/Canada/UK/Germany/French)
- RJ-45 jack x 1
- Kensington lock x 1
- ExpressCard/54 x 1
- PCMCIA slot x 1
- 3-in-1 card reader for SD/MMC/MS
- Built-in microphone

## PCMCIA Card Organization

- ENE CB714 (included Card bus + Flashcard Reader controller)
- PC Card 95 supported with one type-II (No type-III support) card sockets
- No ZV-Port support
- Power switch ENE CP2211

## **Excellent Power Management Function**

- Standby mode, Suspend to RAM or Suspend to Disk mode, by time out or by hot key
- HDD Local Stand-By mode by time out
- LCD Local Stand-By mode by time out
- Low battery alarm by beep
- Auto-backlight off when LCD cover closed
- Full ACPI 2.0 support
- LCD Auto-DIM mode by time out

## **AC Adapter**

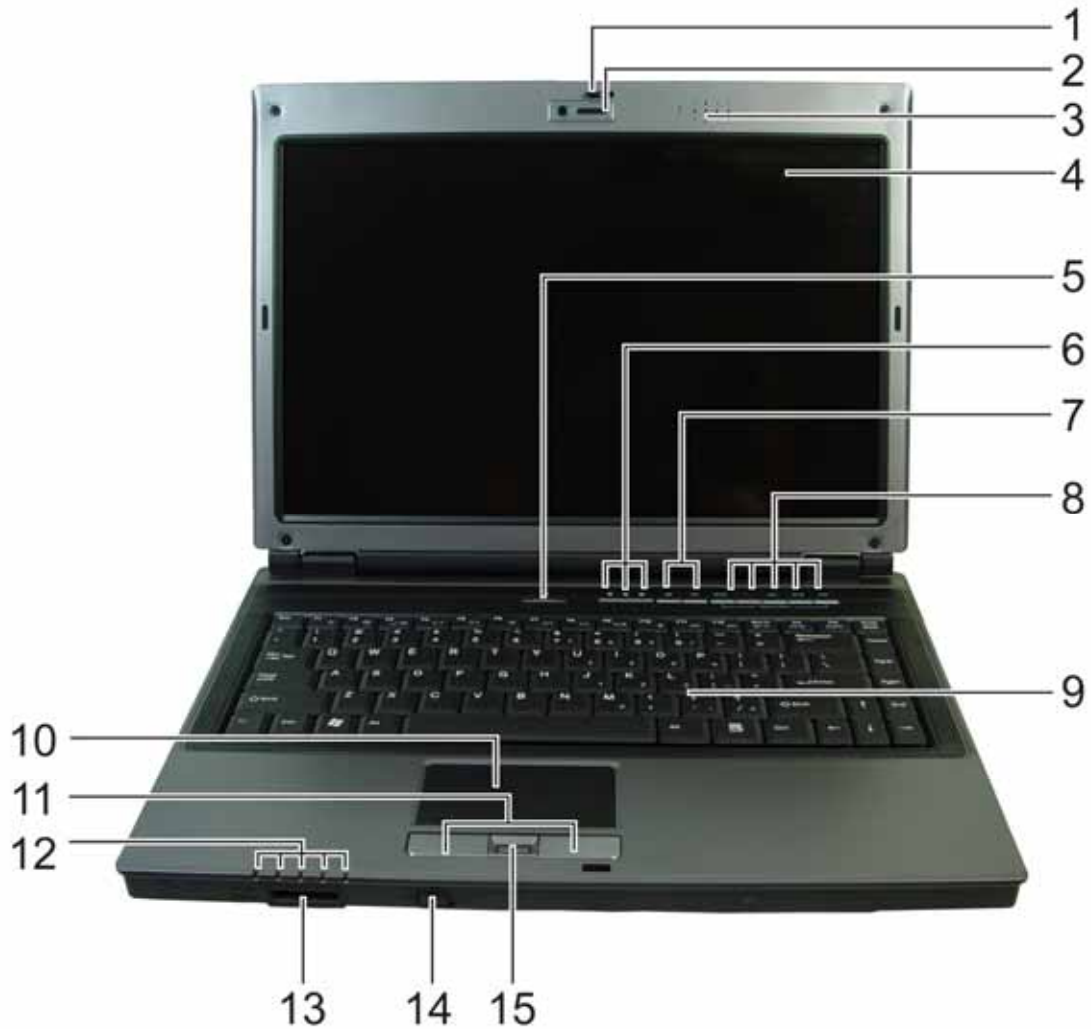
- Universal AC adapter. 90-264V AC, 47-63Hz
- 90W with 19V DC output
- 3 pin type for AC inlet

**Chapter 1**  
**Introducing Your Notebook**



## 1.1 Front Side

The following picture shows the front side of the HGL30 notebook.



1	LCD Module Latch	9	Keyboard
2	Built-in Camera	10	Touch Pad
3	Built-in Microphone	11	Touch Pad Buttons Keyboard
4	Display	12	Device Status Indicators / Power Status
5	Power Button	13	Multiple Digital Media Slot
6	Keyboard Status Lights	14	Wireless Communication Switch
7	Easy Buttons	15	Finger Printer
8	Media Office Buttons		

### 1.1.1 LCD Module Latch

The LCD Module Latch secures the display case to your notebook. To open the display, slide the latch to the right and lift the display. When you close the display, the latch secures it automatically.

### 1.1.2 Built-in Camera

The built-in camera features a 1.3mega pixel CMOS web camera.

### 1.1.3 Display

Your display is a 14.1" COLOR TFT/WXGA.

### 1.1.4 Power Button

Press the button to turn your notebook on. For more on power settings, see **5.1 Power Management**.





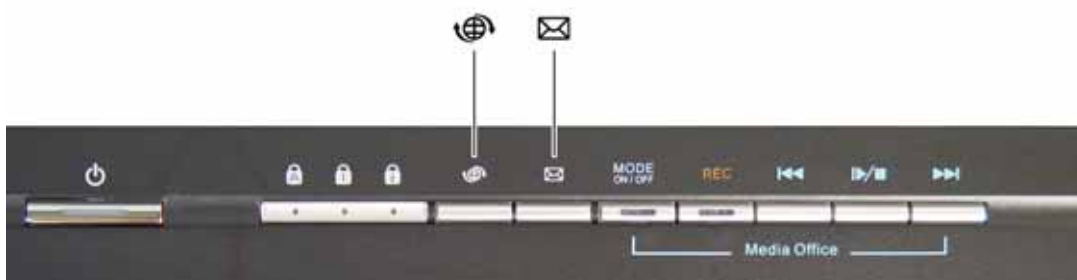
*Windows Vista, which comes preinstalled, goes into the shutdown sequence automatically if you press the power button while on.*

*You can configure this in **Control Panel: Power Options – Advanced**.*

### 1.1.5 Easy Buttons

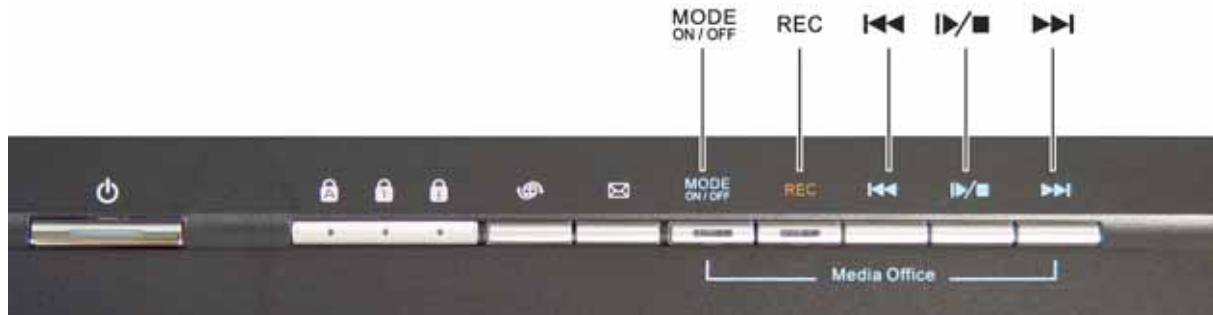
These buttons launch your favorite programs.

	Internet access button
	Email button



### 1.1.6 Media Office Buttons

Media Office provides Audio / Video recording function to utilize the advantages of array microphone and built-in camera. By operating Media Office buttons, you can enjoy all functions of this application.



There are 4 modes in Media Office.

- Solo: Recording audio in front of the notebook.
- Conference: Recording audio all around the notebook.
- Video: Recording video and audio in front of the notebook.
- Photo: Pictures capturing.

The following table describes all functions and related button definition:

Mode		Solo	Conference	Video	Photo
Mode	Short Press	Launches Media Office. With the press of this button when Media Office is launched, the mode changes in the following order: Solo → Conf → Video → Photo → Solo.			
	Long Press*	Closes Media Office.			
REC	Short Press	Recording audio	Recording audio	Recording video + audio	Taking pictures
	Long Press*				
⏮	Short Press	Returns to previous media file.			
	Long Press*	Decreases the volume.			
▶/■	Short Press	Plays selected media file.			
	Long Press*	Stops playing / recording.			
⏭	Short Press	Jumps to next media file.			
	Long Press*	Increases the volume.			

\*Long Press: Press the button over two seconds.

### 1.1.7 Keyboard

The keyboard includes a numeric keypad and the Microsoft® Windows® logo key.



See **2.3 Keyboard and Touch Pad** for details on using keyboard shortcuts.

### 1.1.8 Keyboard Status Lights

	Indicates uppercase letter function enabled.
	Indicates numeric keypad enabled.
	Indicates scroll lock function enabled.



### 1.1.9 Touch Pad

The touch pad works as a desktop mouse. For more information, see **2.3 Keyboard and Touch Pad**.





### 1.1.10 Touch Pad Buttons

The left and right touch pad buttons work as the left/right buttons on a standard mouse.



### 1.1.11 Finger Printer


The finger printer allows you to enroll the computer with registered fingerprint. This recognition device helps prevent unauthorized access by others. For more information, see [2.3.7 Finger Printer](#).



### 1.1.12 Multiple Digital Media Card Slot

Supports one SD/MMC/MS card, which is used in digital still camera and various forms of portable information equipment.

### 1.1.13 Wireless Communication Switch

Turns the wireless communication function on or off. The wireless communication LED  on the front panel lights when the function is activated.

### 1.1.14 Device Status Indicators / Power Status

The LEDs on the front side of notebook indicate the device and power status.



1	Power On (Green)
2	Battery Charge (Green/Amber)
3	HDD (Green)
4	For SD/MS/MMC Card (Green)
5	Wireless (Blue)

The flashing Power On LED indicates the notebook is in standby mode.

For detailed battery status, see **5.2 Battery**.




## 1.2 Right Side

The following picture shows the right side of the HGL30 notebook.



1	Audio Ports
2	USB Ports
3	Optical Media Drive
4	VGA Port

### 1.2.1 Audio Ports

You can connect a headphone or an external speaker to the  port and a microphone to the  port. The built-in speakers are disabled when a device is connected to the  port.



### 1.2.2 USB Ports



Use this port to connect a USB device, such as a mouse, full-size external keyboard, or printer, to the computer.



*USB is a peripheral expansion standard that supports a data-transfer rate up to 480 Mbps. USB peripherals have a single standard for cables and connectors. You can install and remove USB devices while the computer is on. This is known as "hot swapping".*

### 1.2.3 Optical Media Drive

The optical media drive provides a means for you to import/export data and small files into/from your computer. Depending on the configuration of your computer, you may either be able to record CDs or play DVDs.

### 1.2.4 VGA Port



Use this port to connect an external monitor to your computer. See **1.1.3 Display**.

## 1.3 Left Side

The following picture shows the left side of the HGL30 notebook.



1	K-Lock
2	USB Port
3	LAN Jack
4	PC Card Slot
5	Express Card Slot

### 1.3.1 USB Port



Use this port to connect a USB device, such as a mouse, full-size external keyboard, or printer, to the computer.



*USB is a peripheral expansion standard that supports a data-transfer rate up to 480 Mbps. USB peripherals have a single standard for cables and connectors. You can install and remove USB devices while the computer is on. This is known as "hot swapping".*

### 1.3.2 LAN Jack



The RJ-45 network jack allows you to connect your notebook to a local area network (LAN).



*Be careful not to plug the telephone line into the slightly larger network connector.*

### 1.3.3 PC Card Slot

Supports one Type II PC card. For more information, see **4.1 PC Cards and Express Cards**.

### 1.3.4 Express Card Slot

Supports one 54mm type PCI Express card. For more information, see **4.1 PC Cards and Express Cards**.

## 1.4 Back Side

The following picture shows the back side of the HGL30 notebook.



1	S-Video out Port
2	Modem Jack
3	AC Adapter Connector

#### 1.4.1 S-Video out Port



The S-Video out port allows you to connect an external display device, like TV set or device which has S-video port, to the notebook.

#### 1.4.2 Modem Jack



The modem jack allows you to connect the notebook to a telephone line with a standard RJ-11 connector.

#### 1.4.3 AC Adapter Connector



The AC adapter connector allows you to connect an AC adapter when your notebook is switched on or off.



*While the AC adapter works with electrical outlets worldwide, power connectors and power strips vary from country to country. Ensure you use compatible cable and correctly connect the cable to the power strip or electrical outlet. Failure to do so may cause fire or damage to equipment.*



## 1.5 Bottom Side

The following picture shows the bottom side of the HGL30 notebook.



1	Battery Pack
2	Battery Release Latch
3	Memory Module Cover
4	HDD Cover
5	Battery Lock Switch
6	Thermal Cover

### 1.5.1 Battery Pack

With a charged battery pack installed, you can use your notebook without connecting it to an electrical outlet. For more details, see [5.2 Battery](#).



#### **To remove the Battery Pack:**

1. Move the Battery Lock Switch to the right (Unlock position).
2. Slide the Battery Release Latch to the left and gently pry the Battery Pack from the computer chassis.

### 1.5.2 Battery Release Latch

The Battery Release Latch secures the battery pack. To release, slide the latch and then remove the battery pack from the bay.

# **Chapter 2**

## **Operating Your Notebook**



## 2.1 Turning Your Notebook On and Off

- Turning Your Notebook On
- Turning Your Notebook Off
- Logging Off
- Adding User Accounts
- Sleep Mode

### 2.1.1 Turning Your Notebook On



*You can configure the computer to start from a specific drive, such as a CD-ROM, an external floppy disk, or even an external device. See **Chapter 6 The BIOS Setup Program**.*

Press the power button to turn on your notebook.



*Do not turn off the computer until the operating system has loaded completely. Turning the computer off during its initial startup will result in an error the next time you start your notebook.*

### 2.1.2 Turning Your Notebook Off



*If your notebook is using Microsoft Windows Vista Professional operating system, the security and networking features are not available in Windows Vista Home Edition. You will see different options in some windows, related to security and networking.*

Save and close any open files, exit any open programs.

Click **Start > ► > Shut Down**.

Your notebook will automatically turn off after the shutdown process is finished.



*You can configure Windows Vista to shut down or enter sleep mode when the power button is pressed. Click **Start > Control Panel > Choose what the power button does**.*

### 2.1.3 Logging Off

With Microsoft Windows Vista, multiple users can access a single computer with their own, personal settings. Using their own password, each user logs on to the computer, meaning other users cannot access their settings or files.

To log off:

Save and close any open files, exit any open programs, click **Start > ► > Log Off**.

To switch users:

Click **Start > ► > Switch User**.

When using **Fast User Switching**, programs that previous users were running remain in the background. This means a possible slower computer response. It may also stop multimedia programs, including games and DVD software, from running.



***Fast User Switching** does not work if your notebook is running Windows Vista Professional and is a member of a computer domain or if the notebook has less than 128 MB of memory.*

*You can set up **Fast User Switching** in the Control Panel dialog box, under **User Accounts: Change the way users log on or off**.*

#### 2.1.4 Adding User Accounts



*Different account options are available when a computer is running the Windows Vista Professional operating system and is connected to a domain.*

With Windows Vista installed, the system administrator or a user with administrator rights can create additional user accounts:

1. Click Start > Control Panel > User Accounts and Family Safety > Add or remove user accounts.
2. When prompted, click **Continue**
3. Click Create a new account.
4. Click the **New account name** text box and enter the name of the new user. Click **Next**.
5. Now choose one of the following options:
  - **Standard User**: User can install some programs and hardware.
  - **Administrator**: User can change all computer settings.
6. Click **Create Account**.

#### 2.1.5 Sleep Mode

To find out how to conserve power using the Sleep Mode, see *5.1 Power Management*.

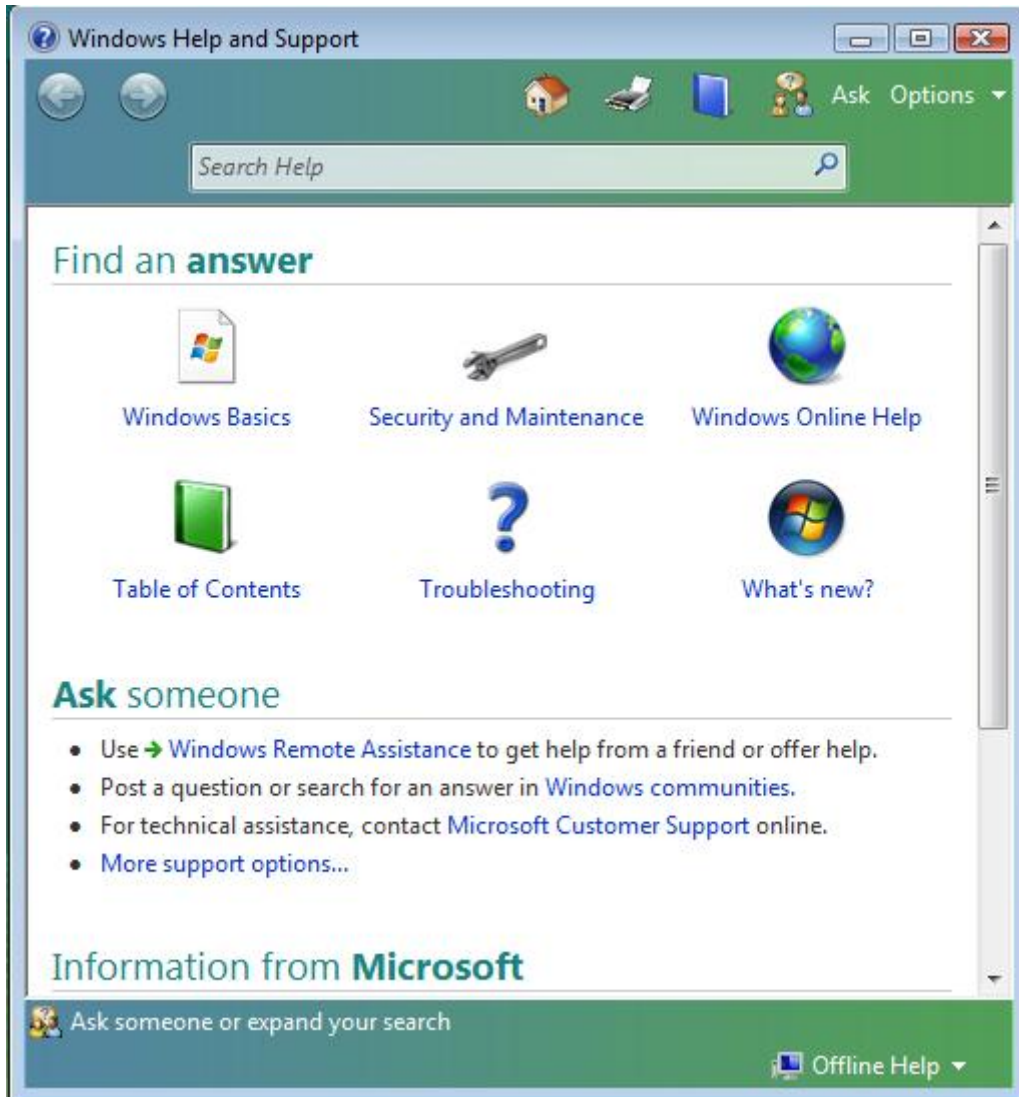
## 2.2 Tips for Using Windows

- Microsoft Windows Vista Help
- Windows Desktop
- Start Button
- Taskbar
- Notification Area (System Tray)
- Recycle Bin
- Control Panel
- Computer



### 2.2.1 Microsoft Windows Vista Help

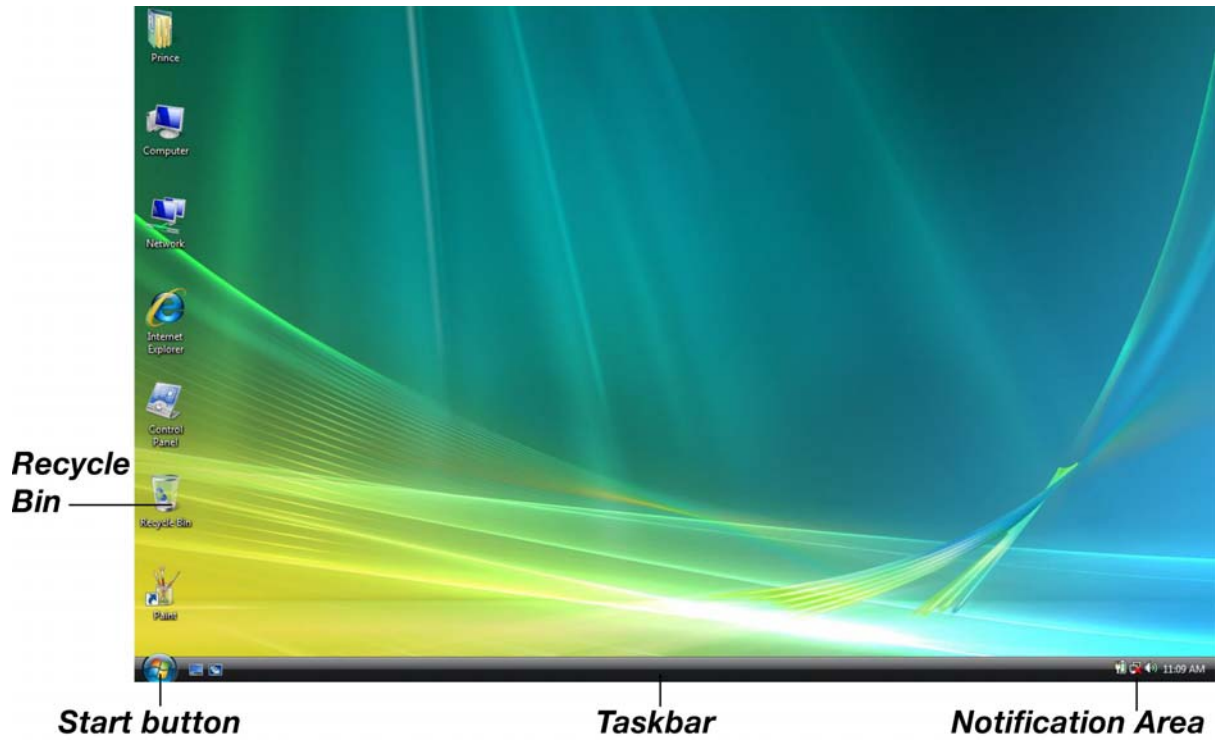
For Microsoft Windows Vista help, click the **Start** menu then click the **Help and Support** icon. The Help and Support Center dialog box opens.



### 2.2.2 Windows Desktop

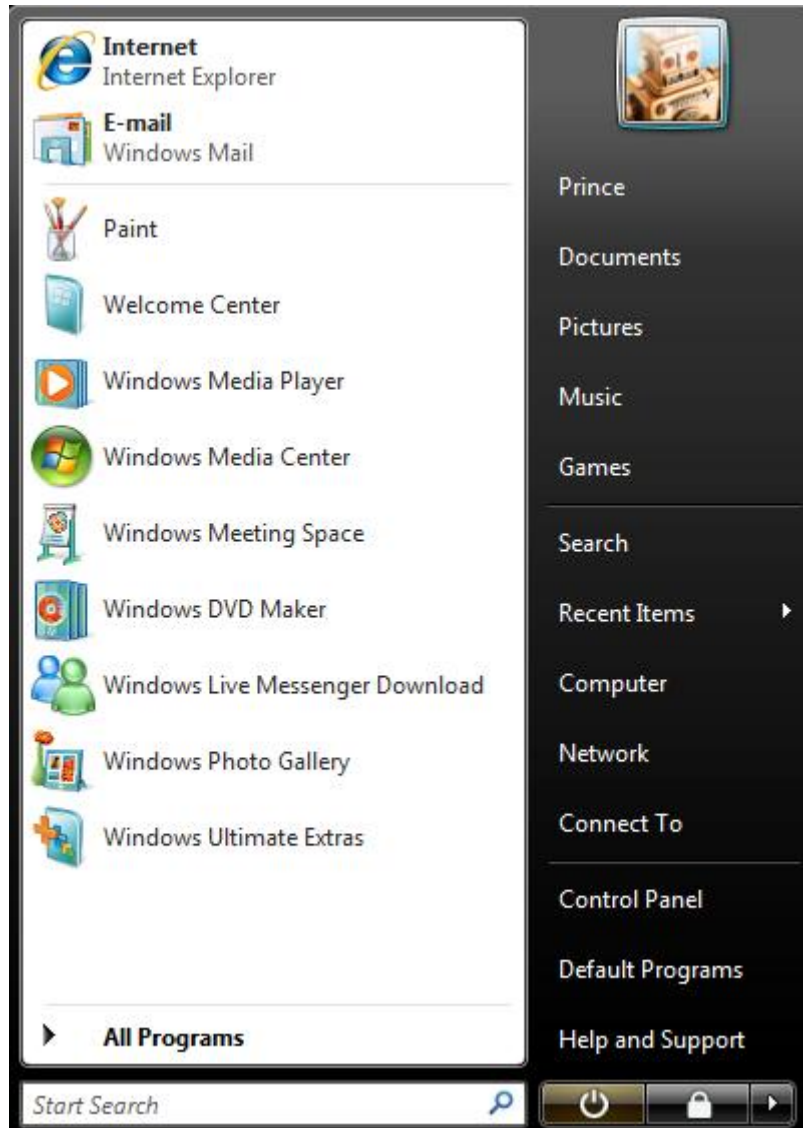


*Depending on your notebook setup and software, your desktop may have different or additional shortcuts. See **2.4 Personalizing Your Desktop** for more information.*





### 2.2.3 Start Button


The **Start** button allows easy access to your notebook's programs.



The **Start** menu is designed to adapt to show the programs you use most frequently. To always keep an item on the **Start** menu, no matter how often it's used, right-click the item and click **Pin to Start menu**.

 puts the current session into memory and enters a low-power state ready to be resumed.

 lock this computer

 provides options for turning off, restarting, switching users, and placing your notebook in power saving modes. If your notebook is running Windows Vista and is connected to a domain, different options appear in the **Shut Down** window.


### 2.2.4 Taskbar

The **Start** button is on the left and the notification area on the right. Each time you open a program, a button for it appears on the taskbar. To toggle taskbar buttons, click the relevant button. Windows Vista groups multiple instances of the same program on a single taskbar button if more space is needed.

Toolbars can be added to or removed from the taskbar:

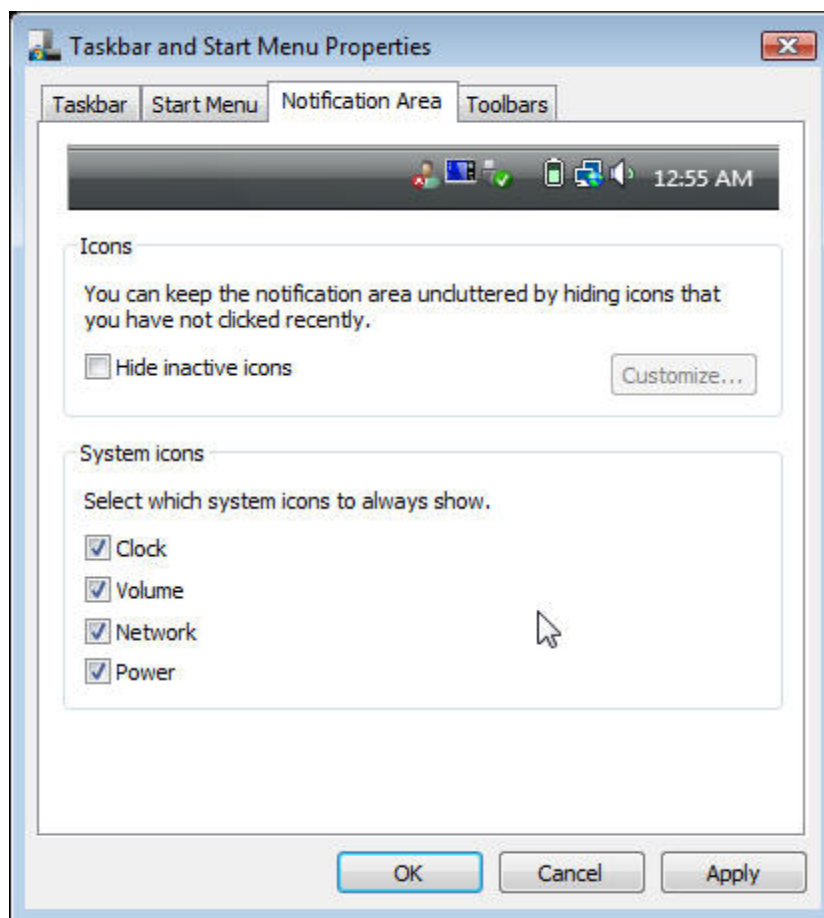
Right-click an empty spot on the taskbar, and select **Toolbars > choose the toolbar you want to add**.

### 2.2.5 Notification Area (System Tray)

The icons in this area allow quick access to programs and computer functions, including the clock and printer status. Windows Vista hides icons that are not used frequently. Click  to see hidden icons.

To prevent Windows Vista from hiding icons:

Right-click an empty spot on the **Taskbar > Properties > Notification Area** > ensure that **Hide inactive icons** is not checked.





## 2.2.6 Recycle Bin

When you delete a file, it is moved to the **Recycle Bin**. Files can be restored from the **Recycle Bin**.

Emptying the **Recycle Bin** deletes files permanently.

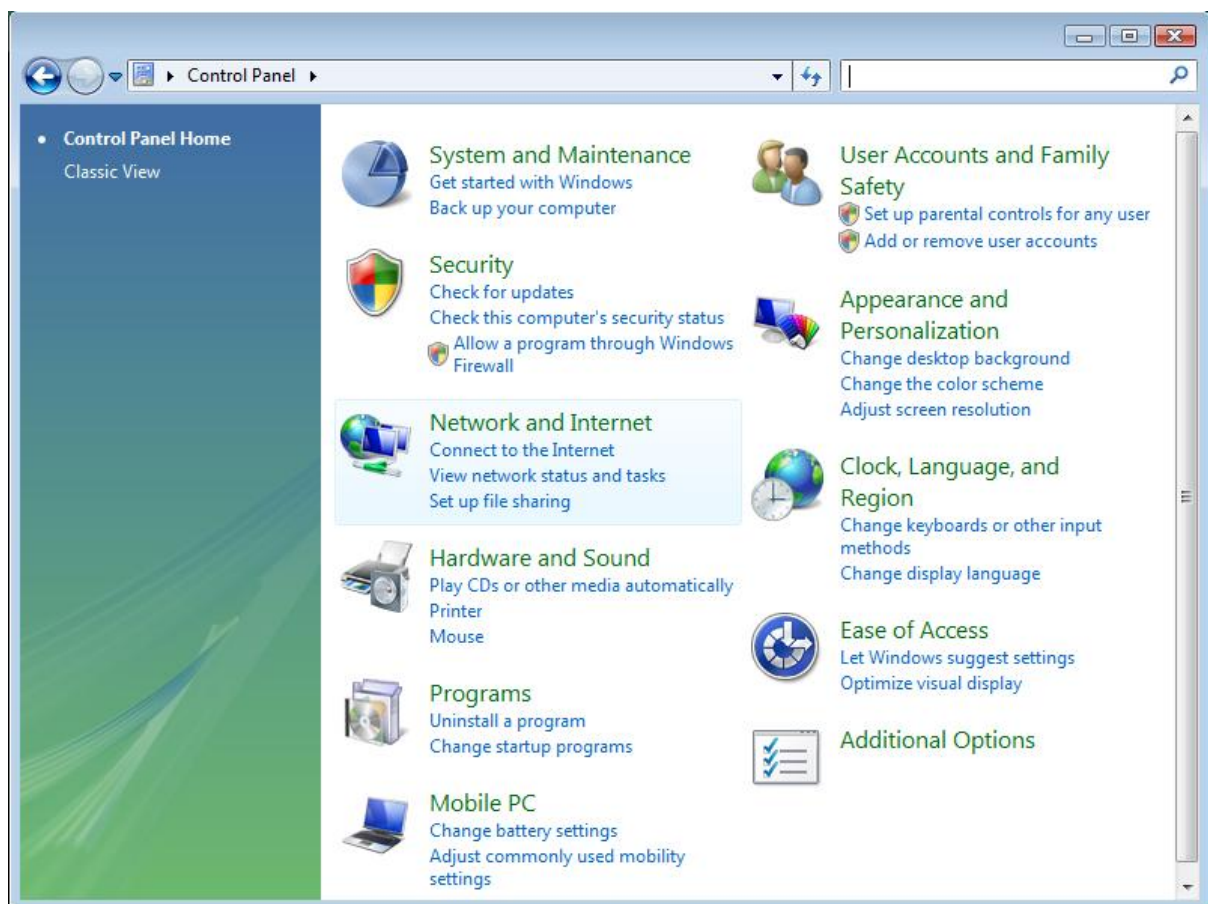
## 2.2.7 Control Panel

In the **Control Panel**, you can change how Windows looks and works.

Click the **Start** button and then **Control Panel**.

There are two interfaces - you can choose either **Control Panel Home** or **Classic View**. You can switch interfaces in the upper left hand of the **Control Panel** window.

Choose the task description you wish to complete, and then choose the task in the next window.



### 2.2.8 Computer

**Computer** allows you to see the disk drives and other external devices connected to your computer. The **Computer** icon displays on your Desktop. To see the contents of a drive or folder, open **Computer** then double-click the icon of the drive or folder you want to view (for example, drive C).




*You can also use **Windows Explorer** to see the contents of your notebook and find files. To open **Windows Explorer**, right-click the **Start** button and click **Explore**. Find the drive or folder that you want to view. To find out more about **Computer** and **Windows Explorer**, see the **Help and Support Center**.*


## 2.3 Keyboard and Touch Pad

- Numeric Keypad
- Keyboard Shortcuts
- Windows Logo Key Functions
- StickyKeys
- Touch Pad
- Customizing the Touch Pad
- Finger Printer

### 2.3.1 Numeric Keypad


Keypad numbers and symbols are marked in blue on the lower right edge of the keypad keys.

To enable the numeric keypad, press .



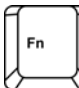




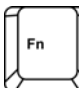









The  indicator will light when the numeric lock is on.

To disable the numeric keypad, press  again.

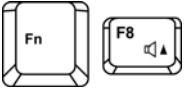

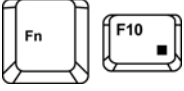

To use the primary function of a dual-function key when the numeric keypad is enabled,

press  and the desired key.






### 2.3.2 Keyboard Shortcuts

 	Sleep
 	Wireless or Bluetooth
 	Switches Display Mode (LCD > CRT > TV > LCD + CRT Simultaneous > LCD+TV Simultaneous). Switches the video image to the next display or both displays simultaneously.
	Number Lock
 	Scroll Lock
 	Brightness Down
 	Brightness Up
 	Mute
 	Audio Volume Down



	Audio Volume Up
	Media Play/Pause
	Media Stop
	Media Play Backward
	Media Play Forward

### 2.3.3 Windows Logo Key Functions

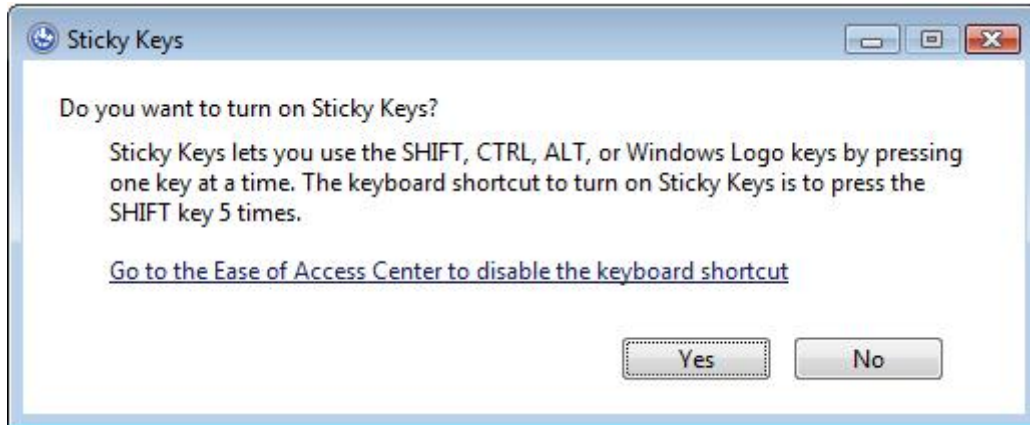
	Opens Windows Explorer
	Opens the Run dialog box
	Opens the Search Results dialog box
	Opens the Search Results - Computers dialog box (when your notebook is connected to a network)
	Opens the System Properties dialog box

To adjust keyboard operation, including character repeat rate, in the **Control Panel** click **Printers and Other Hardware > Keyboard**.

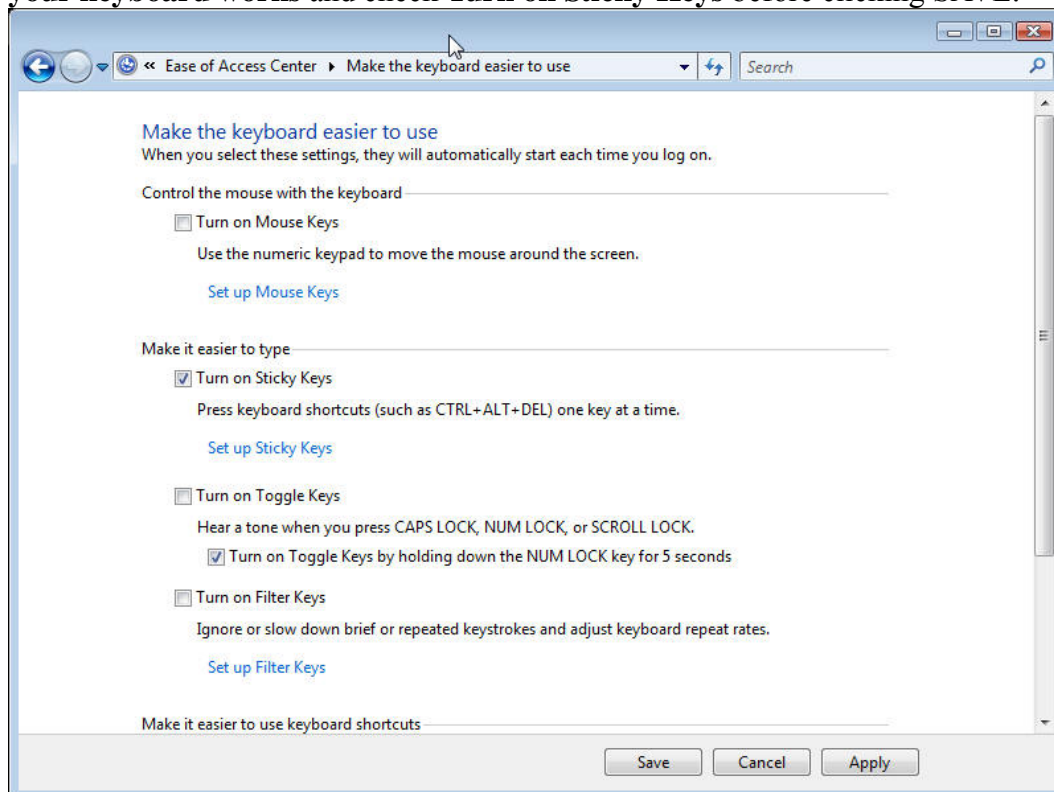
### 2.3.4 StickyKeys

The StickyKeys function lets you use the SHIFT, CTRL, ALT, FN keys or the Windows logo key (referred to as modifier keys) in conjunction with other keys by pressing one key at a time instead of simultaneously.

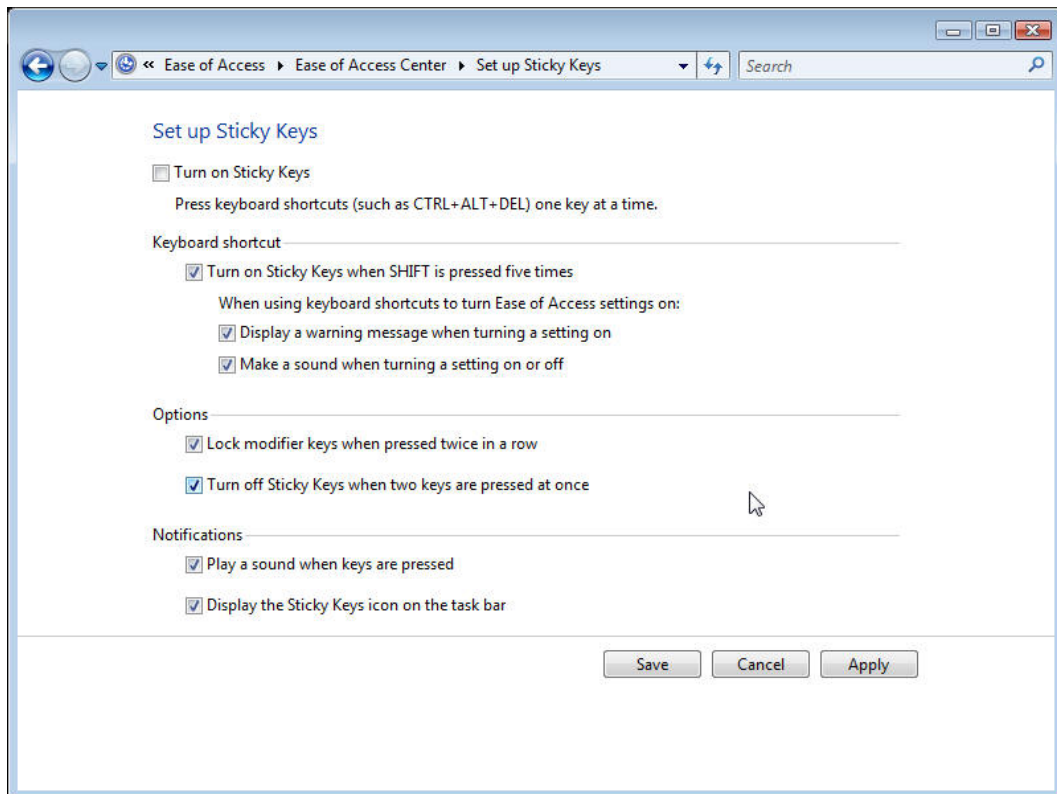
To activate StickyKeys mode, press the Shift key five times and then click **YES**.



Alternatively, you can click on **Start > Control Panel > Ease of Access > Change how your keyboard works** and check **Turn on Sticky Keys** before clicking SAVE.



To further customize **StickyKeys**, click **Set up Sticky Keys** in the above dialogue box. The following dialogue box will appear.



Click **Turn on Sticky Keys** to enable the listed shortcuts to activate Sticky Keys mode.

By checking **Lock modifier keys when pressed twice in a row**, pressing the **SHIFT**, **CTRL**, **ALT**, **FN** or the Windows logo key twice will 'lock' the key until it is pressed again. This allows you to perform multiple commands with these keys in succession without having to press the modifier key again each time.

Check **Turn off Sticky Keys when two keys are pressed at once** to have Sticky Keys automatically disable whenever any two keys are pressed simultaneously.

If **Play a sound when keys are pressed** is checked, a tone will be heard each time a modifier key is pressed. Different tones are heard when activating and deactivating modifier keys.

Check **Display the Sticky Keys icon on the task bar** to display the Sticky Keys icon in your toolbar whenever the Sticky Keys mode is activated. The icon will change to indicate which modifier key, if any, is currently active.

Click on **Save** to confirm your changes, **Cancel** to exit the dialogue box without making any changes, or **Apply** to have your settings take effect without saving.

### 2.3.5 Touch Pad

The Touch Pad responds to the movements and pressure of your finger, allowing you to move the cursor around the screen, in the same way you would with a mouse.



Place your fingers on the keyboard in the normal typing position.

You can use the Touch Pad by moving either your right or left thumb off the space bar and on to the Touch Pad.

Gently move your thumb across the Touch Pad in the direction you want the cursor to move.

The Touch Pad buttons have the same function as mouse buttons. Clicking these buttons makes selections, drags objects, or performs a variety of other functions depending on the software. To select an object, first move the pointer over the object you want to select, and then press the left button one time and release it. The functionality of these buttons depends on your software.

Double-clicking is a common technique for selecting objects or launching programs.

You may also select object or execute applications from icons by double tapping. This is similar to double-clicking; instead of pressing the Touch Pad buttons, you tap the Touch Pad itself.

### 2.3.6 Customizing the Touch Pad

To adjust Touch Pad settings, use the Mouse Properties window, which you can open by clicking **Control Panel > Hardware and sound > Mouse**.

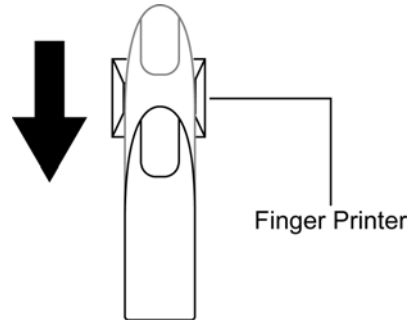
Select the desired settings and click **Apply**.

Click **OK** to save the settings and close the window.

### 2.3.7 Finger Printer

The finger printer lets you log on to your computer instead of inputting passwords from the keyboard.

To raise the recognition success rate, the following illustrations show the correct way to swipe your finger over the finger printer.



Align your fingertip with the finger printer as shown in the drawing and swipe.

To reduce the damage to the finger printer and fingerprint recognition problems, follow these guidelines when using the finger printer.

- Do not scratch or poke the finger printer with your nails or any hard or sharp objects.
- Do not press the finger printer strongly.
- Do not touch the finger printer with a wet finger or any wet objects. Keep finger printer surface dry and free of water vapor.
- Do not touch the finger printer with a soiled finger. Minute foreign particles on a soiled or dirty finger may scratch the finger printer.
- Do not paste stickers or write on the finger printer.
- Do not touch the sensor with a finger or any object with built-up static electricity.

### **2.3.7.1 Delete the Finger Printer Data**

Saved fingerprint data is stored in the non-volatile memory inside the finger printer. Fingerprint data are recommended to delete before you hand over the computer the others, or dispose of it.

To delete the fingerprint data, do the following:

1. Click **Start > All Programs > Protector Suite QL > Control**.
2. The **Protector Suite Software** screen is displayed.
3. Click **Fingerprints > Delete**.
4. Click **Settings > Fingerprint Storage Inspector**.
5. The **Fingerprint Storage Inspector** screen is displayed. If other fingerprint data is still displayed on the list. Select all fingerprint data and click **remove**.
6. Check whether all fingerprint data was deleted on the **Fingerprint Storage Inspector** screen.

## 2.4 Personalizing Your Desktop

- Choosing a Wallpaper
- Choosing a Screen Saver
- Choosing a Desktop Theme
- Creating a Shortcut on the Desktop

### 2.4.1 Choosing a Wallpaper

To make your notebook reflect your style, you can set background colors and patterns, the wallpaper, on the desktop.

**Control Panel > Appearance and Personalization > Change the desktop background.**

Choose the name of the wallpaper you want to display.

You can also choose your own images by choosing **Browse**, and specifying images in a directory.

Select **Tile**, **Center** (places one copy of the image in the center of the screen) or **Fit** (scales the image to fit the screen) from the **Position** option.

To accept the settings, click **OK** to save your settings and close this window.

### 2.4.2 Choosing a Screen Saver

**Control Panel > Appearance and Themes > Pick a task > Choose a screen saver.**

Select a screen saver from the **Screen saver** pull-down menu, or click **None** if you prefer not to activate a screen saver.

You can customize your screen saver by choosing **Settings**. To check your selections, click **Preview**.

To accept the settings, click **OK** and close the **Display Properties** window.

### 2.4.3 Choosing a Desktop Theme

Desktop themes change the appearance of your desktop and add sound effects:

**Control Panel > Appearance and Personalization > Change the computer's theme.**

Select a theme from the **Theme** pull-down menu in the **Display Properties** Window, and then click **OK**.

### 2.4.4 Creating a Shortcut on the Desktop

A shortcut is an icon that is placed on the desktop let you quickly access programs, files, folders, and drivers. To create a shortcut:

Open **Computer** or **Windows Explorer**, and highlight the file or program you want to create a shortcut to.

Click and hold down the right Touch Pad button, drag the highlighted item to the Windows desktop, and then release the right Touch Pad button to display a pop-up menu.

Click **Create Shortcut(s) Here**.

An icon appears on your desktop - double-click to activate the shortcut.







## 2.5 Display

- Adjusting Brightness
- Using an External Monitor or Television
- Setting Display Resolution



### 2.5.1 Adjusting Brightness

To conserve power when running your notebook from the battery, set the brightness to the lowest comfortable setting using the keyboard shortcuts.

 	Brightness Down
 	Brightness Up

### 2.5.2 Using an External Monitor or Television

When you start your notebook with an external display device such as an external monitor or television attached and turned on, the image may appear on either the display or the external device.

Alternatively, you can press   to switch the video image to the display only, the display and the external device simultaneously, or the external device only.

### 2.5.3 Setting Display Resolution

To view a program at a specific resolution, both the video controller and display must support the program and the necessary video drivers must be installed.

Before changing any of the original display settings, note the original settings for future reference.

**Start > Control Panel > Appearance and Personalization > Adjust screen resolution.**

Under **Pick a task...**, click the area you want to change, or under **or pick a Control Panel icon**, click **Display**.

You can try different settings for Color quality and Screen resolution.

If you choose a resolution or color depth that is higher than the display supports, the settings will automatically adjust to the closest possible setting.

## 2.6 Networks

To access a network:

At the office, you can access a network via the built-in PCI-E LAN.

For specific information about connecting to the LAN or WAN, consult your systems administrator.

If you are working at home or while traveling, you need a dial-up connection. Ask your system administrator for the telephone number of the network.

To set up the connection, go to **Start > Control Panel > Network and Internet Connections** (in Classic Interface, **Network Connections**).

Enter the details for your connection and click **OK**.



## 2.7 Managing Programs

- Running Programs
- Adding Software
- Removing Software

### 2.7.1 Running Programs


Programs are any software that process data - like a word processing program or an email program. They require an operating system - like Windows Vista - to run on.



To run a program, click **Start > All Programs**.

Click the program you want to run.

On the right side of the title bar in the window of any open program there are three icons:



 minimizes the program. That is, it is removed from the screen, but is still running. It will appear as a button on your bottom taskbar. To restore the program, simply click the button.

 maximizes the window to fill your entire screen. When the window is maximized, the button switches to , which will reduce the size of the window when clicked.

 closes the program or document.

### 2.7.2 Adding Software

To check what software is already installed on your computer, click **Start > All Programs**. If a program is listed in the **All Programs** menu or the **Start** menu, the software is already installed.

Before installing software, check the software's technical requirements to ensure that it is compatible with your notebook and that there is enough memory and hard drive space for installation and operation.

Temporarily disable your notebook's antivirus software before installing software. See the documentation that came with the antivirus software for detailed procedure.



*Be sure to enable your antivirus software once you have installed any new software.*

Insert the software installation CD into the CD drive and follow the instructions that came with the software to help you respond to the prompts on the screen.

If the software installation CD does not automatically run, click **Start > All Programs > Accessories > Run**. In the dialogue box, type `x:\setup.exe` (where x is the letter of your CD drive [usually D or E]). Then click **OK** and follow the prompts on your screen.

### 2.7.3 Removing Software



*Once you've begun removing software, do not interrupt the process. To do so may result in data loss and corruption of your operating system.*

**Start > Control Panel > Uninstall a program.**

Select the program that you want to remove and click the **Change/Remove** button. Instructions for removing programs will appear on the screen.



*Some programs may not be listed and cannot be removed via this window. In this case, check the documentation that came with the specific program.*





## 2.8 Managing Files

- Updating Antivirus Software
- Backing Up Files
- Finding Files
- Copying a File on the Hard Drive
- Copying a File to a Floppy Disk
- Moving Files
- Renaming Files
- Deleting Files
- Emptying the Recycle Bin
- Retrieving Files From the Recycle Bin

### 2.8.1 Updating Antivirus Software

There are thousands of known viruses, and more appear all the time. Installing antivirus software is the only way to protect your data, software, and hardware. Regular updates are necessary to ensure protection.

Your computer dealer can advise you regarding purchasing antivirus software.



*Before installing any software from unlicensed sources, scan for viruses. Regularly backup your data to safeguard against loss if your notebook is infected.*

### 2.8.2 Backing Up Files

Regularly backing up your files will protect you from losing data from accidental file deletion, viruses or hard drive failure.

Programs can be reinstalled, unless you have backed up your work, you will lose your data files.

The most convenient way to back up your files is to a CD-RW drive. For smaller files, you can use a floppy disk.

### 2.8.3 Finding Files

Right click on **Start > Search**.

In the search window, type either **All or part of the file name** or **A word or phrase in the file**.

Specify where you want the system to look by specifying a drive or folder in the **Look in** pull-down menu.



*Windows will search the entire hard drive (or drive C partition) if the default setting of C: is unchanged.*

Click **Search** to begin searching.

Files found that match your search criteria are listed in the **Search Results** window.

### 2.8.4 Copying a File on the Hard Drive

From the **Desktop**, select **Computer**.

Locate the file you want to copy, and click the file to select it.

Under **File and Folder Tasks > Copy this file**.

In the **Copy Items** window, select the location where you want to copy the file.

Click **Copy**.

### 2.8.5 Copying a File to a Floppy Disk

Insert a floppy disk into the external floppy drive.

From the **Desktop**, select **Computer**.

Locate the file you want to copy, and click the file to select it.

Under **File and Folder Tasks > Copy this file > Copy Items > 3½ Floppy (A:)**.

Click **Copy**.

### 2.8.6 Moving Files



*Never move files that are part of an installed program. Doing so may make the program unusable.*

From the **Desktop**, select **Computer**.

Locate the file you want to move, and click the file to select it.

Click **Move this file**.

In the **Move Items** window, click the location where you want to move the file.

Click **Move**.

### 2.8.7 Renaming Files

Use **Windows Explorer** or **Computer** to locate the file you want to rename, and click the file to select it.

Click the **File** menu and click **Rename**.



*Never change a file's extension (the last three characters after the period). Doing so may render the file unusable.*

Type the new filename and press **Enter**.

### 2.8.8 Deleting Files



*Never delete files that are part of an installed program. Doing so may render the file unusable.*

Use **Windows Explorer** or **Computer** to locate the file you want to delete, and click the file to select it.

Click the **File** menu and click **Delete**.

Click **Yes** to send the file to the **Recycle Bin**.

If you accidentally delete a file, see **2.8.10** Retrieving Files From the Recycle Bin.

### 2.8.9 Emptying the Recycle Bin

Files remain in the **Recycle Bin** and take up space on the hard drive until you empty them from the **Recycle Bin**.



*Files deleted from a floppy disk or from a network are permanently erased. You cannot recover them from the Recycle Bin.*

Double-click the **Recycle Bin** icon.

The **Recycle Bin** window appears and lists all deleted files, their previous locations, and the dates you deleted them.

Click the **File** menu, and click **Empty Recycle Bin**.

When the confirmation dialog box appears, click **Yes** to delete all file(s).

All files disappear from the **Recycle Bin** and are removed from your notebook.

### 2.8.10 Retrieving Files From the Recycle Bin

Deleted files are moved to the **Recycle Bin** and remain there until you empty the Recycle Bin. If you delete a file in error, you can retrieve it from the **Recycle Bin**:

Double-click the **Recycle Bin** icon.



Recycle Bin

The **Recycle Bin** window will appear, listing all deleted files, their previous locations, and the dates you deleted them.

Select the file you want to retrieve, click the **File** menu, and then click **Restore**.

The file disappears from the **Recycle Bin** and is moved to its original location.

## 2.9 Playing CDs and Movies

- Inserting Discs
- Adjusting Volume
- Adjusting the Picture

### 2.9.1 Inserting Discs



*Be careful not to press down on the drive tray when opening or closing it. When the drive is not in use, keep the tray closed.*



*Do not move the computer when playing CDs or DVDs.*

To insert a disc, do the following:

1. Press the eject button on the front of the drive.
2. Pull the tray out.
3. With the label side up, place the disc in the center of the tray.
4. Snap the disc onto the spindle.
5. Gently push the tray back into the drive.

If your notebook has a CD-RW/DVD or DVD, you can watch movies.

For more information on playing CDs or watching movies, click **Help** on the CD player software or DVD player software.



### 2.9.2 Adjusting Volume



*If you do not hear anything when playing a CD or DVD, check that the speakers are not muted.*

**Start > All Programs > Accessories > Windows Mobility Center.**

In the **Volume Control** window, click and drag the bar in the **Volume Control** column and slide it up or down to increase or decrease the volume.

	Audio Volume Down
	Audio Volume Up

### 2.9.3 Adjusting the Picture

If you receive an error message that the current resolution and color depth are using too much memory and preventing DVD playback, adjust the display properties:

**Start > Control Panel > Appearance and personalization > Personalization > Display Settings.**

In the **Display Properties** window, click and drag the bar in **Screen resolution** to change the setting to 1024 x 768 pixels.

Click the pull-down menu under **Color quality > Medium (16 bit) > OK.**

**Chapter 3**  
**Caring for Your Notebook**





## 3.1 Caring for Your Notebook

- Cleaning Your Notebook and Keyboard
- Cleaning the Display
- Cleaning the Touch Pad
- Cleaning the CD/DVD Drive
- Precautions



*Never spray cleaning products directly onto your notebook's case or display. Only use products designed for cleaning computer displays.*

### 3.1.1 Cleaning Your Notebook and Keyboard

1. Shut your notebook down, turn it off and disconnect it from the electrical outlet and any external devices, such as a printer.
2. Remove the battery packs.
3. Use the brush attachment of your vacuum cleaner, gently remove dust from your notebook's openings and keyboard.
4. Use a slightly moistened soft, lint-free cloth, wipe your notebook and keyboard. *Use only water or a recommended computer cleaner.*

### 3.1.2 Cleaning the Display

1. Shut your notebook down, turn it off and disconnect it from the electrical outlet and any external devices, such as a printer.
2. Remove batteries.
3. Use a slightly moistened soft, lint-free cloth, wipe your notebook's display. *Use only water or a recommended computer cleaner.*

### 3.1.3 Cleaning the Touch Pad

1. Shut your notebook down, turn it off and disconnect from the electrical outlet and any external devices, such as a printer.
2. Remove batteries.
3. Use a slightly moistened soft, lint-free cloth, carefully wipe the Touch Pad, being careful not to allow any moisture into the gaps. *Use only water or a recommended computer cleaner.*

### 3.1.4 Cleaning the CD/DVD Drive



*Never touch the lens. Use only compressed air to clean the lens.*

If you experience problems playing CDs or DVDs, including skipping, clean the unlabelled side of the disc with a soft, lint-free cloth or using a commercial product.

### 3.1.5 Precautions

- Do not spill liquids on the keyboard. If liquid is spilt on the keyboard, turn your notebook off immediately. Leave off overnight to let it completely dry out before using it again.
- Do not turn off your notebook if a drive light indicates a drive is active. Turning off your notebook while it is reading from or writing to a disk may damage the disk, the drive, or both.
- Keep your notebook and disks away from objects that generate strong magnetic fields, such as stereo speakers. Information on disks is stored magnetically. Placing a magnet too close to a disk can erase important files.
- Scan all new files for viruses. This precaution is especially important for files you receive via email, disk, or download from the Internet. You will need a special program to scan for viruses. For further information, talk to your computer dealer.



## 3.2 Traveling

- Identifying Your Notebook
- Packing Your Notebook
- Setting a Password
- Travel Tips
- If Your Notebook Is Lost or Stolen

### 3.2.1 Identifying Your Notebook

Attach a nametag or business card to your notebook, or use a permanent marker or stencil to write a unique identifying mark (such as your driver's license number) on the case.

Create a file on the Desktop called **if found**. Place information such as your name, address, and telephone number in this file.

Contact your credit card company, and ask if it offers coded identification tags.

### 3.2.2 Packing Your Notebook

Remove any external devices attached to the computer and store them in a safe place.

Remove any cables attached to installed PC Cards, and remove any extended PC Cards.

Fully charge the main battery and any spare batteries you plan to carry with you.

Turn off the computer or put the computer into hibernate mode.

Disconnect the AC adapter.

Remove any extraneous items, such as paper clips, pens, and paper, from the keyboard and then close the display.

Pack your notebook and accessories in their carry case.

Avoid packing the computer with items such as shaving cream, colognes, perfumes, or food.

Protect the computer, the batteries, and the hard drive from hazards such as extreme temperatures, dirt, dust, liquids, or overexposure to sunlight.

Pack the computer so that it does not slide around in the trunk of your car or in an overhead storage compartment.



*When traveling by air, never check in your notebook as baggage.*

### 3.2.3 Setting a Password

To provide extra protection for your data and documents, it is advisable to set a password.

As your notebook is booting (starting up), press **F2** to take you to the **BIOS Setup Utility**. Use the right arrow key to highlight **Security**.

Use the down arrow key to select: **Set Supervisor Password**. Press **Enter**.

Type your password, press **Enter** and re-type to confirm. Press **Enter**. Your changes will be saved. Press **Enter** to continue.

Use the right arrow key to select **Exit**, use the down key to select **Exit Saving Changes**. Press **Enter** and **Yes**. Your notebook will now boot as normal.

### 3.2.4 Travel Tips

- If you are traveling internationally, carry proof of ownership—or of your right to use the computer if it is company-owned—to speed your passage through customs. Investigate the customs regulations of the countries you plan to visit and consider acquiring an international carnet (also known as a merchandise passport) from your government.
- Ensure that you know which electrical outlets are used in the countries you will visit, and have appropriate power adapters.
- Check with your credit card company for information about the kinds of emergency travel assistance it offers to users of portable computers.
- When traveling by air, ensure that you have a charged battery available in case you are asked to turn on the computer.
- Before you use the computer on an airplane, verify that such usage is permitted. Some airlines forbid the use of electronic devices during the flight. All airlines forbid the use of electronic devices during takeoff and landing.



*Never walk your notebook through a metal detector. Send it through an X-ray machine, or have it manually inspected.*

### 3.2.5 If Your Notebook Is Lost or Stolen

Call a law enforcement agency to report your notebook lost or stolen. Ask that a case number be assigned and write down the number, along with the name, address, and telephone number of the law enforcement agency. If possible, obtain the name of the investigating officer.

If the notebook belongs to a company, notify the security office of the firm.





**Chapter 3**  
**Caring for Your Notebook**



## 3.1 Caring for Your Notebook

- Cleaning Your Notebook and Keyboard
- Cleaning the Display
- Cleaning the Touch Pad
- Cleaning the CD/DVD Drive
- Precautions



*Never spray cleaning products directly onto your notebook's case or display. Only use products designed for cleaning computer displays.*

### 3.1.1 Cleaning Your Notebook and Keyboard

1. Shut your notebook down, turn it off and disconnect it from the electrical outlet and any external devices, such as a printer.
2. Remove the battery packs.
3. Use the brush attachment of your vacuum cleaner, gently remove dust from your notebook's openings and keyboard.
4. Use a slightly moistened soft, lint-free cloth, wipe your notebook and keyboard. *Use only water or a recommended computer cleaner.*

### 3.1.2 Cleaning the Display

1. Shut your notebook down, turn it off and disconnect it from the electrical outlet and any external devices, such as a printer.
2. Remove batteries.
3. Use a slightly moistened soft, lint-free cloth, wipe your notebook's display. *Use only water or a recommended computer cleaner.*

### 3.1.3 Cleaning the Touch Pad

1. Shut your notebook down, turn it off and disconnect from the electrical outlet and any external devices, such as a printer.
2. Remove batteries.
3. Use a slightly moistened soft, lint-free cloth, carefully wipe the Touch Pad, being careful not to allow any moisture into the gaps. *Use only water or a recommended computer cleaner.*

### 3.1.4 Cleaning the CD/DVD Drive



*Never touch the lens. Use only compressed air to clean the lens.*

If you experience problems playing CDs or DVDs, including skipping, clean the unlabelled side of the disc with a soft, lint-free cloth or using a commercial product.

### 3.1.5 Precautions

- Do not spill liquids on the keyboard. If liquid is spilt on the keyboard, turn your notebook off immediately. Leave off overnight to let it completely dry out before using it again.
- Do not turn off your notebook if a drive light indicates a drive is active. Turning off your notebook while it is reading from or writing to a disk may damage the disk, the drive, or both.
- Keep your notebook and disks away from objects that generate strong magnetic fields, such as stereo speakers. Information on disks is stored magnetically. Placing a magnet too close to a disk can erase important files.
- Scan all new files for viruses. This precaution is especially important for files you receive via email, disk, or download from the Internet. You will need a special program to scan for viruses. For further information, talk to your computer dealer.



## 3.2 Traveling

- Identifying Your Notebook
- Packing Your Notebook
- Setting a Password
- Travel Tips
- If Your Notebook Is Lost or Stolen

### 3.2.1 Identifying Your Notebook

Attach a nametag or business card to your notebook, or use a permanent marker or stencil to write a unique identifying mark (such as your driver's license number) on the case.

Create a file on the Desktop called **if found**. Place information such as your name, address, and telephone number in this file.

Contact your credit card company, and ask if it offers coded identification tags.

### 3.2.2 Packing Your Notebook

Remove any external devices attached to the computer and store them in a safe place.

Remove any cables attached to installed PC Cards, and remove any extended PC Cards.

Fully charge the main battery and any spare batteries you plan to carry with you.

Turn off the computer or put the computer into hibernate mode.

Disconnect the AC adapter.

Remove any extraneous items, such as paper clips, pens, and paper, from the keyboard and then close the display.

Pack your notebook and accessories in their carry case.

Avoid packing the computer with items such as shaving cream, colognes, perfumes, or food.

Protect the computer, the batteries, and the hard drive from hazards such as extreme temperatures, dirt, dust, liquids, or overexposure to sunlight.

Pack the computer so that it does not slide around in the trunk of your car or in an overhead storage compartment.



*When traveling by air, never check in your notebook as baggage.*

### 3.2.3 Setting a Password

To provide extra protection for your data and documents, it is advisable to set a password.

As your notebook is booting (starting up), press **F2** to take you to the **BIOS Setup Utility**. Use the right arrow key to highlight **Security**.

Use the down arrow key to select: **Set Supervisor Password**. Press **Enter**.

Type your password, press **Enter** and re-type to confirm. Press **Enter**. Your changes will be saved. Press **Enter** to continue.

Use the right arrow key to select **Exit**, use the down key to select **Exit Saving Changes**. Press **Enter** and **Yes**. Your notebook will now boot as normal.



### 3.2.4 Travel Tips

- If you are traveling internationally, carry proof of ownership—or of your right to use the computer if it is company-owned—to speed your passage through customs. Investigate the customs regulations of the countries you plan to visit and consider acquiring an international carnet (also known as a merchandise passport) from your government.
- Ensure that you know which electrical outlets are used in the countries you will visit, and have appropriate power adapters.
- Check with your credit card company for information about the kinds of emergency travel assistance it offers to users of portable computers.
- When traveling by air, ensure that you have a charged battery available in case you are asked to turn on the computer.
- Before you use the computer on an airplane, verify that such usage is permitted. Some airlines forbid the use of electronic devices during the flight. All airlines forbid the use of electronic devices during takeoff and landing.



*Never walk your notebook through a metal detector. Send it through an X-ray machine, or have it manually inspected.*

### 3.2.5 If Your Notebook Is Lost or Stolen

Call a law enforcement agency to report your notebook lost or stolen. Ask that a case number be assigned and write down the number, along with the name, address, and telephone number of the law enforcement agency. If possible, obtain the name of the investigating officer.

If the notebook belongs to a company, notify the security office of the firm.



# **Chapter 4**

## **Peripherals**



## 4.1 PC Cards and Express Cards

- PC Card Types
- Extended PC Cards
- Installing a PC Card
- Removing a PC Card
- Express Card Types
- Installing and Removing Express Cards

### 4.1.1 PC Card Types

The PC Card slot supports one Type II card. It also supports CardBus technology and extended PC Cards. "Type" refers to the card's thickness, not what it does.



*A PC Card is not a bootable device.*

### 4.1.2 Extended PC Cards

An extended PC Card is longer than a standard PC Card. When using extended PC Cards, follow these precautions:

- Protect the exposed end of an installed card. If the end of the card is struck, the system board may be damaged.
- Always remove an extended PC Card before packing your notebook in its carry case.

### 4.1.3 Installing PC Cards

PC Cards may be 'hot-swapped', which means you can install a card while your notebook is running. The card will be detected automatically.

Usually PC Cards have a mark or symbol to show which end to insert into the slot. Cards are keyed to prevent incorrect insertion. Check the documents that came with your card if the orientation is unclear.

1. Hold the card with its orientation symbol pointing into the slot and the top side of the card facing up. The push-button latch may need to be pushed in before inserting the card.
2. Slide the card into the slot until it clicks into the connector.
3. If you encounter too much resistance, do not force the card. Check the card orientation and try again.

Your notebook will recognize most PC Cards and automatically load the appropriate device driver. If the configuration program tells you to load the manufacturer's drivers, use the floppy disk or CD that came with the PC Card.

#### 4.1.4 Removing PC Cards



*Before removing a PC Card, stop it running from the configuration utility on the taskbar. Failure to do so could result in data loss. Never try to remove a PC Card by pulling on its cable, if one is attached.*



1. Press the release latch.
2. Press the latch again to eject the card.
3. Remove the card.

#### 4.1.5 Express Card Types

The Express Card slot supports one 54mm type PCI-Express card. It supports both USB 2.0 and PCI Express technology, which improves bus speed in data transfer and requires less power than PC Cards.

#### 4.1.6 Installing and Removing Express Cards

Express Cards, with hot-plug feature, allow you to install and remove cards when your notebook is running. The card will be detected automatically when installed.

Usually Express Cards have a mark or symbol to show which end to insert into the slot. Insert the card according to the orientation symbol, and slide the card into the slot.

To remove it, pull it out gently.

## 4.2 Adding and Removing SD/MMC/MS Cards



*Before removing a SD/MMC/MS card, stop it running from the configuration utility on the taskbar. Failure to do so could result in data loss.*

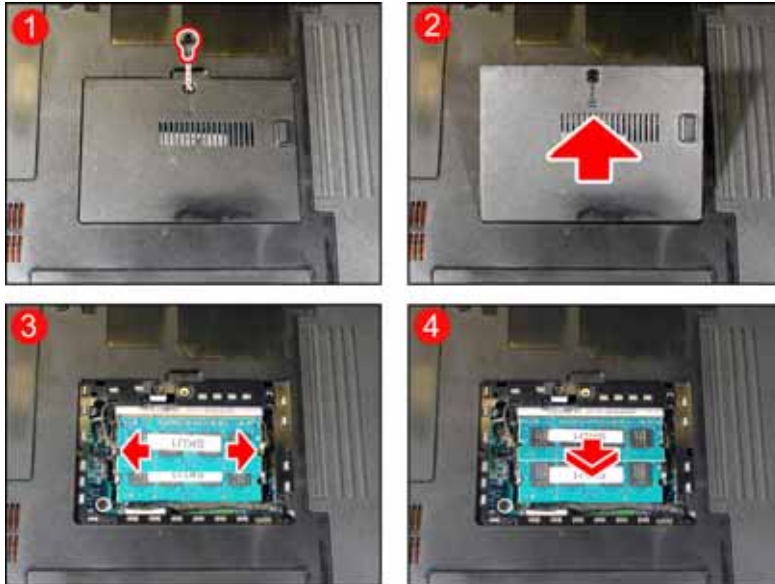
Insert the SD/MMC/MS card into the Card reader slot.

To remove the SD/MMC/MS Card, push it in gently and it ejects automatically.



## 4.3 Memory Modules

You can add more memory modules to your computer in order to give it improved performance.



### To remove a memory module:

1. Remove the two screws securing the memory module cover.
2. Lift off the memory module cover.
3. Pop out the two silver latches holding the memory module into place. The module pops up.
4. Grasp the outer edges of the memory module with thumb and forefinger, and then gently remove it.

### To install a memory module:

1. Remove the two screws securing the memory module cover.
2. Lift off the memory module cover.
3. There are two memory module ports here. The first one is already occupied by your computer's current memory module. Place the new memory module in the second slot, matching up the notch along its connector rim with the tooth in the connection slot.
4. When the module has been securely seated, press down gently on it until it snaps into place.



*Depending on how much additional memory you require, you may need to replace the original memory module.*



**Chapter 5**  
**The Power System**



## 5.1 Power Management

- Power Management Modes
- Power Options Properties
- SpeedStep

Your computer comes with built-in power management. You can configure it, through the **Power Options** program in the Control Panel, to sleep, hibernate, and wake according to specific pre-defined situations.

When leaving your notebook unattended for long periods, place it in standby or hibernate mode. You can exit either power management mode by pressing the power button.



*See 5.2 **Battery** for more information on getting the best performance from battery packs.*



*Use your notebook connected to an electrical outlet as often as possible, as battery life expectancy is affected by the number of times it is charged.*

### 5.1.1 Power Management Modes

#### 5.1.1.1 Sleep Mode

This mode conserves power by switching off the hard drive and display after a preset period of inactivity (a time-out). When sleep mode is exited, your notebook will return to the same operating state it was before entering sleep.



*If your notebook loses power from both the electrical outlet and the battery while in sleep mode, data may be lost.*

To enter sleep mode in Windows Vista:

**Start** > ► > **Sleep**. Or

Set your notebook to enter sleep mode:

- When you close the lid of your notebook
- When you press the power button
- When you press the sleep hot key

The settings can be accessed via **Start** > **Control Panel** > **System and Maintenance** > **Power Options**.

To exit sleep mode, press the power button. You cannot exit sleep mode by pressing a key or touching the Touch Pad. For more information on sleep mode, see **2.1 Turning Your Notebook On and Off**.

### 5.1.1.2 Hibernate Mode

In Hibernate mode, power is conserved by system data being copied to the hard drive, and your notebook is completely shut down. When Hibernate mode is exited, your notebook will return to the same operating state it was in before entering Hibernate mode.

Hibernate mode can be enabled/disabled in the Power Options Properties window.

If enabled, your notebook will go into Hibernate mode if the battery charge level becomes critically low.

Depending on how you set the Power Management Options on the **Advanced tab** in the Power Options Properties window, use one of the following methods to enter hibernate mode:

- When you close the lid of your notebook
- When you press the power button
- When you press the sleep hot key
- **Start > ► > Hibernate.**



*If your PC Cards do not operate correctly after exiting Hibernate mode, remove and reinsert the card or restart your notebook.*

To exit Hibernate mode, press the power button. You cannot exit Hibernate mode by pressing a key or using the Touch Pad. For more information on Hibernate mode, see **2.1 Turning Your Notebook On and Off**.

## 5.1.2 Power Options

To access the Windows Power Options Properties window:

**Start > Control Panel > System and Maintenance > Power Options**

### 5.1.2.1 Select a power plan

Windows Vista provides three preset power plans, Balanced, Power saver, and High performance. Each plan has different time-out settings for turning off the display and entering sleep mode. You do not need to make any further adjustments to set the performance level.

To change setting for the plan, click the following three items on the left pane of the Power Options window.

- Choose when to turn off the display
- Change when the computer sleeps
- Adjust the display brightness

After selecting a plan, you can see the percentage of battery charge remaining and active power plan by moving the mouse pointer over the battery meter icon on the taskbar.

For more information on changing advanced power settings, see the Help and Support Center.



*To maximize battery power, use the Power saver plan.*

### 5.1.2.2 Define power buttons and turn on password protection

Select **Require a password on wakeup**, **Choose what the power buttons does**, or **Choose what closing the lid does** from the left pane of the Power Options window. There are two main settings in this section:

- Power button and lid settings
- Password protection on wakeup

Depending on your operating system, program the following functions by clicking an option from the corresponding pull-down menu, and then clicking **Save changes**.

- > Set the computer to **Do nothing/Sleep/Hibernate/Shutdown** when you press the power button.
- > Set the computer to **Do nothing/Sleep/Hibernate/Shutdown** when you close the laptop lid
- > Select the password requirement when the computer wakes from sleep.



### **5.1.2.3 Create a power plan**

Besides the three preset power plans offered in Windows Vista, you can also customize your own power plan. Select **Create a power plan** on the left pane of the Power Options window to begin configuring your power settings.

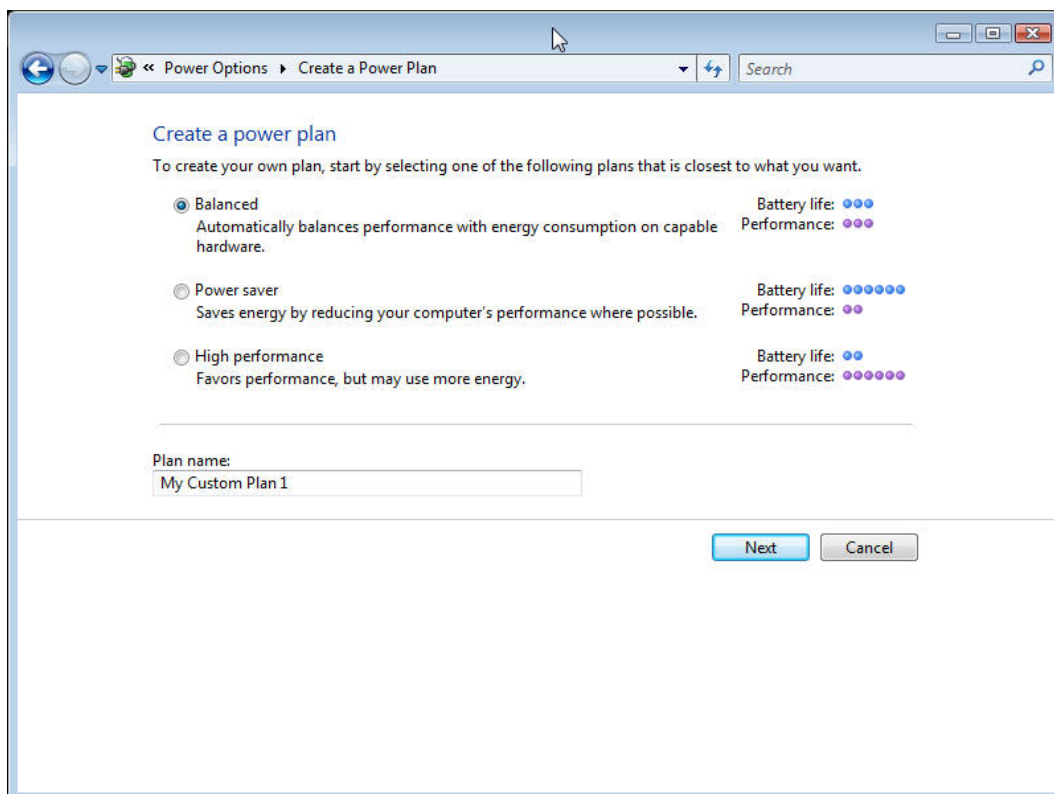
### 5.1.3 SpeedStep

Your notebook is equipped with SpeedStep technology to better manage power consumption. It changes the processor speed to find the best balance between your computing performance and power consumption needs. Higher speeds enjoy better performance, while slower speeds conserve more power.

In Windows Vista, the processor's performance level depends on the Power Scheme you select (see **5.1.2 Power Options**). You do not need to make any further adjustments to set the performance level. Each preset power scheme has different time-out settings for entering standby mode, hibernate mode, turning off the display, and turning off the hard drive.

For example, the Windows Vista automatically changes SpeedStep modes depending on if you are running the computer on AC power or batteries in order to prolong battery usage while still providing optimal performance.

You can also individually alter and save each of these settings and schemes if desired. Choose from the following three power plans that best describes the desired relationship between power and performance.



Windows Vista automatically chooses the SpeedStep mode to find the most appropriate speed for your processor according to the type of plan you choose and your current system demands.

## 5.2 Battery

- Battery Performance
- Checking the Battery Charge
- Power Meter
- Low-Battery Warning
- Charging the Battery
- Removing a Battery
- Installing a Battery
- Storing a Battery
- Working With Extra Battery Packs
- Maximizing Battery Life

### 5.2.1 Battery Performance

The performance of the battery can vary, depending on operating conditions. Your battery may last less time if you are running power-intensive programs, playing CDs or DVDs, using PC Cards or have high display-brightness settings.

The Power Management Options can be set to alert you when the battery charge is low.



*Ensure any battery you use is compatible. Failure to do so may risk fire or explosion. For more details on purchasing compatible batteries, contact your notebook retailer.*



*Batteries should never be disposed of with household waste. Contact your local waste disposal or environmental agency for advice on disposing of used lithium-ion batteries.*





*Only use the BATEL80L6 or BATEL80L9 battery pack with this computer.*

### 5.2.2 Checking the Battery Charge

Battery Status	Indicator behavior
Charging	Solid amber
Fully Charged	Solid green
Discharging	Off
Critical Low	Blinks amber > approximately 3 minutes left; system beeps

### 5.2.3 Power Meter

The power meter  indicates the remaining battery charge. When your notebook is running on battery power, you can check the remaining battery charge, double click the  icon on the taskbar. For more details, including how to make the icon appear on the taskbar if it is not already, see **5.1 Power Management**.

### 5.2.4 Low-Battery Warning



*After a low-battery warning, save your work immediately, then connect your notebook to an electrical outlet. Hibernate mode will begin automatically if the battery runs completely out of power.*

You will hear the low-battery warning when the battery charge is approximately 90 percent depleted. Your notebook will beep once, indicating approximately 10 to 15 minutes of battery operating time remain. If you do not connect your notebook to alternative power source during that time, there will be a periodic beep. If the battery charge reaches a critically low level, your notebook will automatically enter **Stand by/Hibernate/Shut down** mode, which is set in **Alarms Tab**. For more information, see **5.1 Power Management**.

### 5.2.5 Charging the Battery



*When connected to an electrical outlet, a completely discharged battery needs to be charged in 4 to 12 hours (depending on whether your notebook is on or off and what programs, if any, are running). You can leave the battery in your notebook as long as you like. The battery's internal circuitry prevents the battery from overcharging.*

Before using the battery for the first time it must be charged. Connect the computer to an electrical outlet and allow the battery to fully charge, indicated by the battery indicator light on the front panel of the notebook.



*Once a battery pack is fully charged for the first time, use your notebook on battery power until the battery discharges completely. This will extend battery life, and helps ensure accurate monitoring of battery capacity.*

If necessary, the battery will be charged whenever your notebook is connected to an electrical outlet.

The battery will not be charged if it or your notebook is too hot, either from use or being in a hot environment. If this occurs, the battery indicator will light amber. Disconnect your notebook from any electrical outlet, and allow it and the battery to cool to room temperature. You can then reconnect your notebook to the electrical outlet and charge the battery. The battery indicator will also light amber if the battery is bad and needs replacing.

### 5.2.6 Removing the Battery

Before removing the battery, ensure your notebook is turned off.

1. Move the battery lock switch to the right (Unlock position).
2. Slide and hold the battery release latch.
3. Remove the battery.

### **5.2.7 Installing a Battery**

1. Slide the battery into the bay.
2. Press it into place gently but firmly until the latch locks it into place.

### **5.2.8 Storing a Battery**

If storing your notebook for an extended period of time, remove the battery. Fully charge the battery before using your notebook again.

### **5.2.9 Working With Extra Battery Packs**

If you spend a lot of time traveling, working without connecting your notebook to an electrical outlet, it may be a good idea to carry additional battery packs so you can quickly replace a discharged battery and continue working.

### **5.2.10 Maximizing Battery Life**

A battery can be recharged many times, but over time it will lose its ability to hold a charge. To maximize battery life:

- If you will not be using your notebook for a long period, remove the battery.
- If you have a spare battery pack, alternate the batteries.
- Ensure your notebook is off when replacing the battery.
- Store spare battery packs in a cool, dry place, and out of direct sunlight.

# **Chapter 6**

## **The BIOS Setup Program**





## 6.1 Introduction

The BIOS (Basic Input and Output System) Setup program is a menu driven utility that enables you to make changes to the system configuration and tailor the operation of your notebook to your individual work needs. A ROM-based configuration utility displays the system's configuration status and provides you with a tool to set system parameters. These parameters are stored in nonvolatile battery backed-up CMOS RAM, which saves this information even when the power is turned off. When the computer is turned back on, the system is configured with the values found in CMOS. Using easy-to-use menus, you can configure such items as:

- Hard drives, diskette drives and peripherals
- Video display options
- Password protection from unauthorized use
- Boot devices

The settings made in the Setup program intimately affect how the notebook performs. It is important, therefore, first to try to understand all the available options, and second, to make settings appropriate for the way you use the notebook. This chapter guides you through the Setup program by providing clear explanations for all Setup options.

A standard configuration has already been set in the Setup program by the factory technicians, so you will very likely have little to worry about for now. However, eventually you may want to customize your system to suit your own performance needs. It is recommended that you read this chapter and become familiar with the adjustments that can be made in the BIOS.

The next section explains how to move around in the Setup program, as well as how to specify and save your new settings. A brief discussion of the optional settings among the different submenus follows.

## 6.2 Navigating through the BIOS Setup Program

- Accessing the BIOS Setup program
- Launching submenus
- Saving Changes and Exiting the Setup Program

The Setup program has been designed to make it as easy to use as possible. It is a menu driven program, which means you can scroll through the various directories and make your selections among the various predetermined choices. If you accidentally configure a setting and do not know which one to switch back to, use the BIOS hot keys to return to the previous value. The hot keys are discussed in more detail later in this chapter.

When turning on the notebook for the first time you may get a message prompting you to run the BIOS Setup program. A warning message may appear on the screen if the hardware configuration is changed or the POST fails. This message will inform you of any errors or invalid settings and prompt you to run the Setup program to correct the problem.

Even if you are not prompted by a message instructing you to use the Setup program, at some time in the future you may want to change the configuration of your computer. For example, you may want to make changes to the display option settings or enable the notebook's password function for security purposes. It will then be necessary to reconfigure your system using the Setup program so that the computer can recognize these changes.

The list below gives a few examples of reasons why you may want or need to run the BIOS Setup program.

- You have set up the computer for the first time and you got a message stating that you should run the BIOS Setup program.
- You want to redefine the communication ports to prevent any conflicts.
- You want to change the password or make other changes to the security setup.



*The few examples listed above are by no means a complete list.*

### 6.2.1 Accessing the BIOS Setup program

To access the BIOS Setup program, press the F2 key as soon as the computer starts up and you see the Phoenix BIOS screen.

PhoenixBIOS Setup Utility					
<b>Main</b>	Advanced	Security	Boot	Exit	Item Specific Help
System Time:		[19:34:35]			
System Date:		[01/01/2005]			
Hard Disk:		<i>Hard Disk model name , capacity</i>			
Quiet Boot:		[Enabled]			
Power on display:		[Auto-Selected}			
LCD Display stretch		[Enabled]			
System Memory:		640 KB			
Extended Memory:		1022 MB			
BIOS Ver.		XXXXXX			
Language		[English (US)]			
F1 Help	↑↓ Select Item	F5/F6 Change Values	F9 Setup Defaults		
Esc Exit	←→ Select Menu	Enter Select ▶ Sub-Menu	F10 Save and Exit		

#### The Menu Bar

The top of the Setup screen has a menu bar with the following selections:

<b>Main</b>	Allows the user to configure standard IBM PC AT system parameters.
<b>Advanced</b>	Allows the user to configure advanced system settings.
<b>Security</b>	Allows the user to configure security system settings.
<b>Boot</b>	Allows the user to specify the order in which the notebook is to check for a device to boot the system.
<b>Exit</b>	Allows the user to exit the Setup program.

To move between menu bar items, use the [◀] and [▶] arrow keys until the desired item is highlighted. For example, if you want to move from the Main menu to the Advanced menu, press the right arrow key [▶] once.

### **Item Specific Help**

At the right of the Setup screen, you will notice an item specific help bar. For each item that you select on the menu, the bar informs of its specific function as well as the hot keys related specifically to that item and/or submenu.

## **6.2.2 Launching submenus**

A submenu contains additional options for a field parameter. To call up a submenu, simply move the highlight to the desired field and press the [Enter] key. The submenu opens.

If you are a first time user or are not familiar with BIOS Setup programs, it is highly recommended that you take a few minutes to familiarize yourself with each of the submenus and their corresponding functions. If you accidentally make unwanted changes to the current configuration, go to the Exit menu and select Discard Changes.

## **6.2.3 Saving Changes and Exiting the Setup Program**

Refer to the Exit Menu section of this chapter for detailed information on saving changes and exiting the Setup program.

## 6.3 The Main Menu

When the Setup program is accessed, the Information screen appears. It displays the following pieces of information regarding your current system:

PhoenixBIOS Setup Utility						
Main	Advanced	Security	Boot	Exit	Item Specific Help	
System Time:		[19:34:35]				
System Date:		[01/01/2005]				
Hard Disk:		<i>Hard Disk model name , capacity</i>				
Quiet Boot:		[Enabled]				
Power on display:		[Auto-Selected}				
LCD Display stretch		[Enabled]				
System Memory:		640 KB				
Extended Memory:		1022 MB				
BIOS Ver.		XXXXXX				
Language		[English (US)]				
F1 Help	↑↓	Select Item	F5/F6	Change Values	F9	Setup Defaults
Esc Exit	←→	Select Menu	Enter	Select Sub-Menu	F10	Save and Exit

### System Time and System Date

The hour is displayed with 24-hour format. The values set in these two fields take effect immediately.

### Hard Disk

The hard disk information is displayed with the manufacturer and model name.

### Quiet Boot

**Enabled:** Customer logo is displayed; Summary screen is disabled.

Disabled: Customer logo is not displayed; Summary screen is enabled.

### Power on Display

This option is auto-selected. Displays on an external monitor if connected, otherwise it will be displayed on the laptop LCD.

### **LCD Display Stretch**

Disabled: Disables vertical LCD stretch; enables horizontal LCD stretch.

**Enabled:** Enables vertical LCD stretch; enables horizontal LCD stretch.

### **System Memory**

This field reports the memory size of system base memory. The size is fixed to 640KB.

### **Extended Memory**

This field reports the memory size of the extended memory with an integer in the system, but 32Bit SMI will occupy 1 MB and UMA frame buffer (Integrated VGA uses only).

Extended Memory size = Total memory size - 1 MB - 1 MB - UMA frame buffer

### **BIOS Ver**

This field displays current version of the BIOS.

### **Language**

This field allows the user to change the languages among English, Japanese, and French.

## 6.4 The Advanced Menu

Selecting *Advanced* on the menu bar displays the Advanced Menu. Each field on this menu is covered below.

PhoenixBIOS Setup Utility						
Main	<b>Advanced</b>	Security	Boot	Exit		Item Specific Help
	Legacy USB Support			[Enabled]		
	Execute-Disable Bit Capability			[Disabled]		
	Dynamic CPU Frequency Mode			[Dynamic]		
	Built-in LAN: (Option)			[Enabled]		
	DVMT 3.0 Mode: (Option)			[DVMT]		
	Pre-Allocated Memory Size: (Option)			[8MB]		
	Total Graphics Memory: (Option)			[128MB]		
	DVMT Graphics Memory: (Option)			120MB		
F1	Help	↑↓	Select Item	F5/F6	Change Values	F9 Setup Defaults
Esc	Exit	←→	Select Menu	Enter	Select ▸ Sub-Menu	F10 Save and Exit

### Legacy USB Support

Disabled: Disables the legacy USB support.

**Enabled:** Enables the legacy USB support.

### Execute-Disable Bit Capability

**Disabled:** Forces the Execute-Disable Bit Capability extended feature bit to always return to 0.

Enabled: Enabled.

### Dynamic CPU Frequency Mode

Always Low: The CPU always runs at low power consumption and low speed.

**Dynamic:** When the computer is in use, CPU operation is automatically switchable when necessary.

### Build-in LAN (Option)

Disabled: Disables built-in LAN..

**Enabled:** Enables built-in LAN.

**DVMT 3.0 Mode (Option)**

Select the configuration of DVMT 3.0 Graphics Memory that Driver will allocate for use by the Internal Graphics Device

*Fixed:*

*DVMT:*

*Combo:*

**Pre-Allocated Memory Size (Option)**

Select the amount of Pre-Allocated Graphics Memory for use by the Internal Graphics Device

*1MB:*

*8MB:*

**Total Graphics Memory (Option)**

Select the amount of total graphics memory Pre-Allocated + Fixed + DVMT for use by the Internal Graphics Device.

*64MB:*

*128MB:*

*MaxDVMT:*

**DVMT Graphics Memory (Option)**

DVMT Graphics Memory Size



## 6.5 The Security Menu

The notebook's advanced security system allows you to set a password to prevent unauthorized access to system resources, data, and the BIOS Setup program. This section covers each Security parameter. Selecting *Security* from the menu bar displays the Security menu.

### A Note about Passwords

The BIOS Setup program allows you to specify passwords in the Security menu. The passwords control access to the BIOS and certain Security menu options during system startup.

Passwords are not case sensitive. A password can be entered using either upper or lower case letters; it makes no difference. When you choose your password, it should be composed of characters A-Z, 0-9 and eight characters in length.

*NOTE:* The administrator password must be set before the user password can be set.

### Set User Password... / Set Admin Password...

PhoenixBIOS Setup Utility					
Main	Advanced	<b>Security</b>	Boot	Exit	
					Item Specific Help
User Password Is:			Clear		
Supervisor Password Is:			Clear		
Set User Password:			[Enter]		
Set Supervisor Password:			[Enter]		
Password on boot:			[Enabled]		
Built-in HDD Status			Clear		
Built-in HDD Password Select			[User Only]		
Set HDD User Password			[Enter]		
▶ Trusted Platform Module Setting. (Option)					
F1	Help	↑↓	select item	F5/F6	change values
F9	Setup defaults				
Esc	Exit	←→	select menu	Enter Select ▶	Sub-Menu
F10	Save and Exit				

These fields allow you to set the System Password. The System Password allows full access to the BIOS Setup menus. To set the Supervisor password, highlight this field and press [Enter].

Type the password and press the [Enter] key. You can type up to ten alphanumeric characters. Symbols are ignored.

To confirm the password, type the password again and press the [Enter] key.

### User Password Is / Supervisor Password Is

These two fields shows that User /Supervisor Passwords are set or not.

Set        System Password is set.

Clear    System Password is not set.

### Set Supervisor Password / Set User Password

Enter this field always shows the message.

While this field is highlighted, press “Enter”. The following message is shown:

Set Supervisor Password	
Enter New Password	[            ]
Confirm New Password	[            ]

If there is an old password then setup will prompt with the following window instead and a current password will be required to be entered at first:

Set Supervisor Password	
Enter Current Password	[            ]
Enter New Password	[            ]
Confirm New Password	[            ]

User can type password in field of “Enter New Password”, and re-enter password in field of “Confirm New Password “ for verification.

If verification OK:

Setup Notice
Changes have been saved.
[Continue]

The supervisor password is set complete after user press “Enter”.

If verification fails:

Setup Warning
Passwords do not match.
Re-enter Password.
[Continue]

If password on boot is required, the password must be set otherwise it cannot be enabled.

The formats of the password are as follows:

Length:    No more than 8 characters.

Characters: Alphanumeric keys only. The shift status, Ctrl, Shift, Alt, and Capital, are ignored.

**Built-in HDD Status**

Set HDD Password is set.

**Clear** HDD Password is not set.

**Password on boot**

Enabled: Enables Password entry on boot.

**Disabled:** Disabled Password entry on boot.

**Built-in HDD Password Select**

**User Only** For normal user entering HDD password.

User+Master Master password must be set first before user password can be configured.

**Set HDD User Password / Set HDD Master Password**

Enter this field always shows the message.

While this field is highlighted, press “Enter”. The following message is shown:

Set HDD Master Password	
Enter New Password	[            ]
Confirm New Password	[            ]

If there is an old password then setup will prompt with the following window instead and a current password will be required to be entered at first:

Set HDD Master Password	
Enter Current Password	[            ]
Enter New Password	[            ]
Confirm New Password	[            ]

User can type password in field of “Enter New Password”, and re-enter password in field of “Confirm New Password” for verification.

If verification OK:

Setup Notice
Changes have been saved.
[Continue]

The HDD password is set complete after user press “Enter”.

If verification fails:

Setup Warning
Passwords do not match.
Re-enter Password.
[Continue]

If password on boot is required, the password must be set otherwise it cannot be enabled.

The formats of the password are as follows:

Length: No more than 8 characters.

Characters: Alphanumeric keys only. The shift status, Ctrl, Shift, Alt, and Capital, are ignored.

### Trusted Platform Module Setting. (Option)

PhoenixBIOS Setup Utility					
Main	Advanced	<b>Security</b>	Boot	Exit	
<b>Trusted Platform Module Setting. (Option)</b>				Item Specific Help	
Security Chip State		Enabled			
		Deactivated			
Trusted Platform Support		[Disabled]			
F1	Help	↑↓	Select Item	F5/F6	Change Values
				F9	Setup Defaults
Esc	Exit	←→	Select Menu	Enter	Select ▶ Sub-Menu
				F10	Save and Exit

### Security Chip State

Enabled & Activate: Enable security chip encrypted data and user from taking ownership.

Disable & Deactivate: Disable security chip prevents encrypted data from being used and Deactivated security chip prevents a user from taking ownership.

### Trusted Platform Support

**Disabled:** Disables Trusted Platform Module support.

Enabled: Enables Trusted Platform Module support.

### Clear Security Chip

Clear Security Chip to default state and release ownership.

### Change Security Chip State

#### **No Change**

Enable & Activate: Enable security chip encrypted data and user from taking ownership.

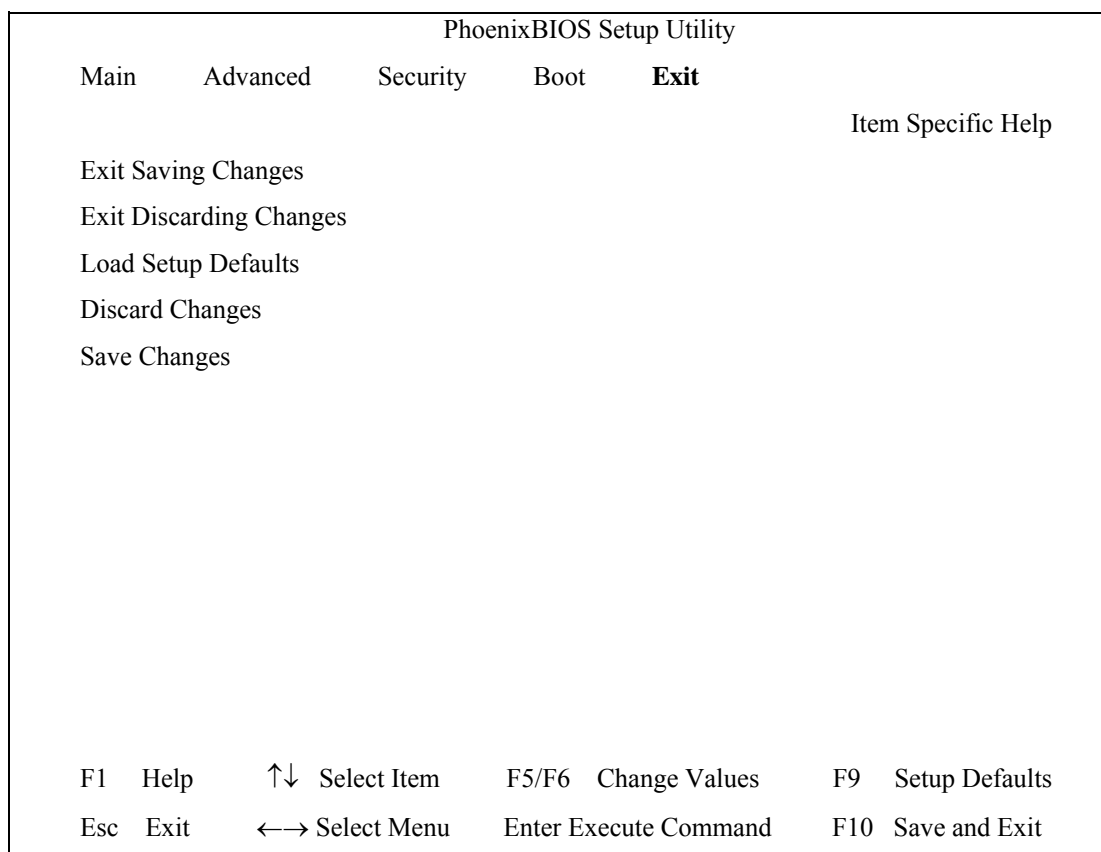
Disables & Deactivate Disable security chip prevents encrypted data from being used and Deactivated security chip prevents a user from taking ownership.

## 6.6 Boot Menu

This menu allows the user to decide the order of boot devices to load the operating system. Bootable devices include the diskette drive in module bay, the onboard hard disk drive and the CD-ROM in module bay.

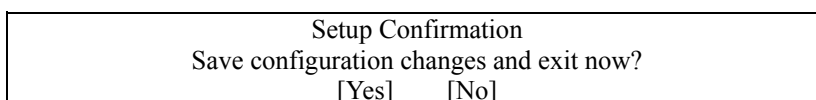
PhoenixBIOS Setup Utility					
Main	Advanced	Security	<b>Boot</b>	Exit	
					Item Specific Help
HDD		Hard Disk Model name			
CD/DVD		CD/DVD Drive Model name			
FDD					
LAN					
F1	Help	↑↓	Select Item	F5/F6	Change Values
F9	Setup Defaults				
Esc	Exit	←→	Select Menu	Enter	Select ▶ Sub-Menu
				F10	Save and Exit

## 6.7 Exit Menu



### Exit Saving Changes

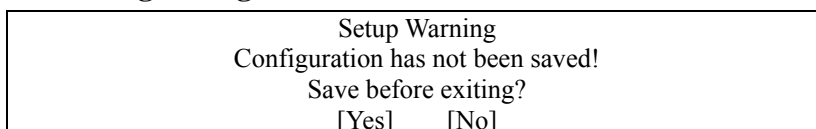
Allows the user to save changes to CMOS and reboot system. The following message is prompted when user press “Enter” on the item.



Yes: Exit SETUP and reboot

No: Go back to previous screen

### Exit Discarding Changes



**Load Setup Defaults**

Allows the user loads default value in CMOS Setup. The following message is prompted when user press “Enter” on this item:

Setup Confirmation Load default confirmation now? [Yes] [No]
--

Select **Yes** to confirm or **No** to abort. You will then return to the setup screen.

**Discard Changes**

Allows the user loads previous value in CMOS Setup. The following message is prompted when press “Enter” on this item:

Setup Confirmation Load previous confirmation now? [Yes] [No]
---

Select **Yes** to confirm or **No** to abort. You will then return to the setup screen.

**Save Changes**

Allows the user to save changes and not exit Setup. The following message is prompted when press “Enter” on this item:

Setup Confirmation Save configuration changes now? [Yes] [No]
---

Select **Yes** to confirm or **No** to abort. You will then return to the setup screen.