

User's Manual

60fps Full HD Vandalproof IR IP Camera

▶ ICA-5260V



Copyright

Copyright © 2014 by PLANET Technology Corp. All rights reserved. No part of this publication may be reproduced, transmitted, transcribed, stored in a retrieval system, or translated into any language or computer language, in any form or by any means, electronic, mechanical, magnetic, optical, chemical, manual or otherwise, without the prior written permission of PLANET.

PLANET makes no representations or warranties, either expressed or implied, with respect to the contents hereof and specifically disclaims any warranties, merchantability or fitness for any particular purpose. Any software described in this manual is sold or licensed "as is". Should the programs prove defective following their purchase, the buyer (and not PLANET, its distributor, or its dealer) assumes the entire cost of all necessary servicing, repair, and any incidental or consequential damages resulting from any defect in the software. Further, PLANET reserves the right to revise this publication and to make changes from time to time in the contents hereof without obligation to notify any person of such revision or changes.

All brand and product names mentioned in this manual are trademarks and/or registered trademarks of their respective holders.

Federal Communication Commission Interference Statement

This equipment has been tested and found to comply with the limits for a Class B digital device, pursuant to Part 15 of FCC Rules. These limits are designed to provide reasonable protection against harmful interference in a residential installation. This equipment generates, uses, and can radiate radio frequency energy and, if not installed and used in accordance with the instructions, may cause harmful interference to radio communications. However, there is no guarantee that interference will not occur in a particular installation. If this equipment does cause harmful interference to radio or television reception, which can be determined by turning the equipment off and on, the user is encouraged to try to correct the interference by one or more of the following measures:

1. Reorient or relocate the receiving antenna.
2. Increase the separation between the equipment and receiver.
3. Connect the equipment into an outlet on a circuit different from that to which the receiver is connected.
4. Consult the dealer or an experienced radio technician for help.

FCC Caution

To assure continued compliance, for example, use only shielded interface cables when connecting to computer or peripheral devices. Any changes or modifications not expressly approved by the party responsible for compliance could void the user's authority to operate the equipment.

This device complies with Part 15 of the FCC Rules. Operation is subject to the following two conditions: (1) This device may not cause harmful interference, and (2) this device must accept any interference received, including interference that may cause undesired operation.

Federal Communication Commission (FCC) Radiation Exposure Statement

This equipment complies with FCC radiation exposure set forth for an uncontrolled environment. In order to avoid the possibility of exceeding the FCC radio frequency exposure limits, human proximity to the antenna shall not be less than 20 cm (8 inches) during normal operation.

Safety

This equipment is designed with the utmost care for the safety of those who install and use it. However, special attention must be paid to the dangers of electric shock and static electricity when working with electrical equipment. All guidelines of this and of the computer manufacture must

therefore be allowed at all times to ensure the safe use of the equipment.

CE Mark Warning

This is a Class B product. In a domestic environment, this product may cause radio interference, in which case the user may be required to take adequate measures.

WEEE Regulation



To avoid the potential effects on the environment and human health as a result of the presence of hazardous substances in electrical and electronic equipment, end users of electrical and electronic equipment should understand the meaning of the crossed-out wheeled bin symbol. Do not dispose of WEEE as unsorted municipal waste; they should be collected separately.

Revision

User's Manual of 60fps Full HD Vandalproof IR IP Camera
Model: ICA-5260V
Rev: 1.00 (July, 2014)
Part No. EM-ICA-5260V

Table of Contents

Chapter 1 Introduction	6
1.1 Features	9
1.2 Product Specifications	10
1.3 Package Contents	11
Chapter 2 Basic Setup	12
2.1 System Requirements	12
2.2 Physical Description	13
2.2.1 Identification of ICA-5260V Cable	13
2.2.2 ICA-5260V I/O Control Instruction	13
2.3 Hardware Installation	14
2.3.1 Physical Installation	14
2.4 Initial Utility Installation	18
2.4.1 Searching and Configuring Network by PLANET IP Installer	18
2.5 Setting up ActiveX to use the Internet Camera	21
2.5.1 Internet Explorer 6 for Windows XP	21
2.5.2 Internet Explorer 7 for Windows XP	22
2.5.3 Internet Explorer 7 for Windows Vista	23
Chapter 3 Web-based Management	25
3.1 Introduction	25
3.2 Connecting to Internet Camera	25
Chapter 4 Live Viewing	27
Chapter 5 Configuration	29
5.1 System	29
5.1.1 System Information	29
5.1.2 User Management	31
5.1.3 System Update	32
5.2 Network	33
5.2.1 IP Setting	33
5.2.2 Advanced	36
5.2.3 Using UPnP of Windows XP or Vista	41
5.2.4 PPPoE	47
5.2.5 DDNS	48
5.2.6 Mail & FTP & SAMBA	49
5.3 A/V Setting	51
5.3.1 Image Setting	51
5.3.2 Video Setting	53
5.3.3 Audio	56
5.4 Event List	57
5.4.1 Event Setting	57
5.4.2 Schedule	59
5.4.3 I/O Setting	60
5.4.4 Log List	61
5.4.5 SD Card	62
Appendix A: Factory Default	65
Appendix B: Ping IP Address	66
Appendix C: 3GPP Access	67
Appendix D: Planet DDNS Application	68
Appendix E: Configuring Port Forwarding Manually	69

Appendix F: Troubleshooting & Frequently Asked Questions.....	72
Appendix G: Micro SD Card Compatibility	76

Chapter 1 Introduction

High Resolution, Professional Day and Night Network Camera

PLANET ICA-5260V PoE IP Camera with zero-lux Illuminator provides high-resolution images for round-the-clock surveillance over IP networks. It supports H.264 and JPEG compression formats and delivers excellent picture quality in Full HD resolutions at 60 frames per second (fps). The ICA-5260V is also equipped with IP66-rated and IK10 vandalproof housing which protect the camera body against rain and dust, and ensures operation under extreme weather conditions, thus making it an ideal solution for outdoor applications, e.g., surveillance of buildings, roads, parking areas, garages, railway stations and airports.

Full HD Resolution



Day & Night Functionality

To adapt to constantly changing lighting conditions during the day and night, the ICA-5260V comes with a removable IR-cut filter and built-in low IR illuminators(0.01 lux), which enable the camera to provide color video when there is sufficient light, and show color video in dark conditions(IR LED off). The camera is able to maintain clear images 24 hours a day.



Exceptional Image Quality

Together with powerful image processing attributes like Wide Dynamic Range and 3-Dimension Noise Reduction technology, the camera is able to filter the intense backlight surrounding a subject and remove noises from video signal. The result is that an extremely clear and exquisite picture quality can be produced even under any challenging lighting conditions.



Advanced Event Management

Digital Input /Output For External Sensor in and Alarm out



The ICA-5260V also support a number of advanced features that give the camera increased flexibility and capabilities, including auto-iris for improving the image quality to avoid over exposure, AV out for performing the two-way audio function and inputs/outputs for connecting external devices such as door sensors and relays to activate light or close doors.

Flexible Installation and Power Functionality

The ICA-5260V incorporate Power over Ethernet which supplies power to the camera via the network, eliminating the need for power cables and reducing installation costs. The ICA-5260V are ONVIF-compliant and therefore interoperable with other manufacturer's products. It also includes 64-CH central management software. The ICA-5260V are indisputably the top choice for reliable and high performance surveillance.



Face Detection is Saved on SD card When Network Connection is Lost

Face Detection detects face and ignores anything else, such as buildings, cars and bodies. When a suspect enters a targeted area, his face is caught in the camera, thereby triggering an alarm, which is then sent to the administrator via e-mail, FTP or Samba. It is thus saved on the SD card even though the network is disconnected.



Face Detection



1.1 Features

➤ **Camera**

- 1/2.8" 2.4 mega-pixel progressive Sony Exmor CMOS sensor
- 3~9 mm vari-focal, DC auto-iris lens
- Super low lux@0.01
- Maximum resolution 1920 x 1080 at 60fps
- True WDR Enhancement to enhance visibility under extremely bright or dark environments
- Removable IR-cut Filter for Day & Night function

➤ **Video / Audio**

- Simultaneous H.264 / MPEG-4 and M-JPEG video compression
- Simultaneous multi-stream support
- H.264 high profile, main profile and baseline
- 3DNR to improve picture quality at low lux
- WDR Enhancement for enhancing visibility under extremely bright or dark environments
- Two-way audio support with enhanced audio quality

➤ **Network and Configuration**

- Compliant with IEEE 802.3af PoE interface for flexible deployment
- Auto MDI/MDI-X supported
- Support for IPv6 in addition to the standard IP protocol version 4
- RTSP / UPnP / 3GPP / HTTPS protocols selectable
- Detects multiple events with SNMP management

➤ **Easy Installation & Management**

- ONVIF compliant for interoperability
- Built-in 18 IR Illuminators, effective up to 20 meters
- IK-10 / IP66 classification with vandal and weather proof
- Built-in Samba client for NAS
- Sends event log to e-mail / FTP and Samba when file is stored to mSD card
- 3GPP for 3G mobile remote applications
- Micro SD card local video recording supported
- Digital Input/Output for integration with sensors and alarms

- Cam Viewer 3 central management software supported

1.2 Product Specifications

Model	ICA-5260V
Camera	
Image Device	1/2.8" 2.4mega-pixel with Sony Exmor™ CMOS sensor
Lens	Vari-Focal 3~9 mm, DC Auto-Iris Mechanical IR-cut filter Angle of view: Horizontal: 28~103 degrees Vertical: 15~52 degrees
Min Illuminator	Color : 0.01 lux (AGC ON) B / W: 0.005 lux (AGC ON)
IR Illumination LED	IR LED x 18, 850nm Built-in IR illuminators, effective up to 20 meters
Effective Pixels	1920 x 1080 @60fps
Video	
Video Encoder	H.264 / M-JPEG
Video Profile	H.264: 1080P / SXGA / 1280 x 960 / 720P / SVGA / WVGA / VGA / 640 x 360 / QVGA / QCIF M-JPEG: 1080P / SXGA / 1280 x 960 / 720P / SVGA / WVGA / VGA / 640 x 360 / QVGA / QCIF 3GPP: H.264 QVGA
Frame Rate	Up to 60fps for all resolutions
Image Setting	Brightness, Contrast, Hue, Saturation, Sharpness, AGC, Shutter Time, Sense-Up, WDR, Flip, Mirror, Noise reduction, White Balance, Day & Night adjustable
Streaming	Simultaneous multi-profile streaming M-JPEG streaming over HTTP Supports 3GPP mobile surveillance Controllable frame rate and bandwidth Constant and variable bit rate (H.264)
Audio	
Audio Streaming	Two-way audio
Audio Encoder	RTSP: G.711 / G.726 3GPP: AMR
Microphone	Terminal block
Audio Output	Terminal block
Network and Configuration	
Network Standard	IEEE 802.3 10Base-T IEEE 802.3u 100Base-TX
Supported Protocols	IPv6, IPv4, HTTP, HTTPS, SNMP, QoS/DSCP, Access list, IEEE 802.1X, RTSP, TCP/ IP, UDP, SMTP, FTP, PPPoE, DHCP, DDNS, NTP, UPnP, 3GPP, SAMBA, Bonjour
Security	Password protection, user access log
Users	10 simultaneous unicast users
System Integration	

Application Programming Interface	Open API for software integration SDK
Alarm Triggers	Intelligent video motion detection and external input 3-zone video motion detection
Alarm Events	File upload via FTP, email and SAMBA. External output activation Configurable Pre/Post alarm buffering
General	
Power Supply	12V DC, 1A IEEE 802.3af Class 3
Power Consumption	12V DC Max: 5.28W (IR On), 3.84W (IR Off) PoE Max: 802.3af, 6.72W (IR On), 5.28W (IR Off)
Housing	IK10 / IP66 classification with vandal and weatherproof
Operating Temperature	-20 ~ 50 degrees C
Operating Humidity	20 ~ 80% (non-condensing)
Weight	890 g
Dimensions (W x L x D)	126 x 126 x 100 mm
Emission	CE, FCC
Connectors	10/100Mbps Ethernet, RJ-45 DC power jack Factory default reset Micro SD/SDHC card (Max. 32GB, Class 6) Composited video out (Max. resolution: D1 720 x 480 pixel) Terminal block for 1 alarm input, 1 output, external MIC input and audio out

1.3 Package Contents

The package should contain the following:

- ICA-5260V x 1
- Power Adapter x 1
- Screw Package x 1
- Female to Female RJ-45 Connector x 1
- Mounting Label x 1
- User's Manual CD x 1
- Quick Installation Guide x 1
- Desiccant x 1



Note

1. If any of the above items are missing, please contact your dealer immediately.
2. Using the power supply that is not the one included in the Internet Camera packet will cause damage and void the warranty for this product.

Chapter 2 Basic Setup

This chapter provides details of installing and configuring the Internet camera

2.1 System Requirements

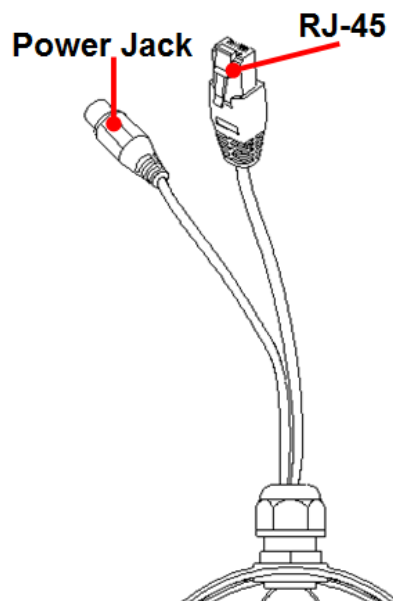
Network Interface	10/100Base-TX Ethernet
Monitoring System	Recommended for Internet Explorer 8.0 or later
System Hardware (Suggested)	<ul style="list-style-type: none">· CPU: Intel Core i3-530· Memory Size : 2048 MB (1024 MB or above Recommended)· VGA card resolution : 1920 x 1200· VGA card memory : 512 MB or above
System Hardware (Minimum)	<ul style="list-style-type: none">· CPU: Intel C-2.8G· Memory Size : 512 MB· VGA card resolution : 1280 x 1024· VGA card memory : 64 MB



1. The listed information is the minimum system requirements only. Actual requirements will vary depending on the nature of your environment.

2.2 Physical Description

2.2.1 Identification of ICA-5260V Cable



1. RJ-45 LAN socket: Connect to PC or Hub/Switch.

For connection to 10Base-T Ethernet or 100Base-TX Fast Ethernet cabling, this Ethernet port built N-Way protocol can detect or negotiate the transmission speed of the network automatically. Please use CAT-5 cable to connect the Network Camera to a 100Mbps Fast Ethernet network switch or hub.

2. Power Jack: The input power is DC 12V.



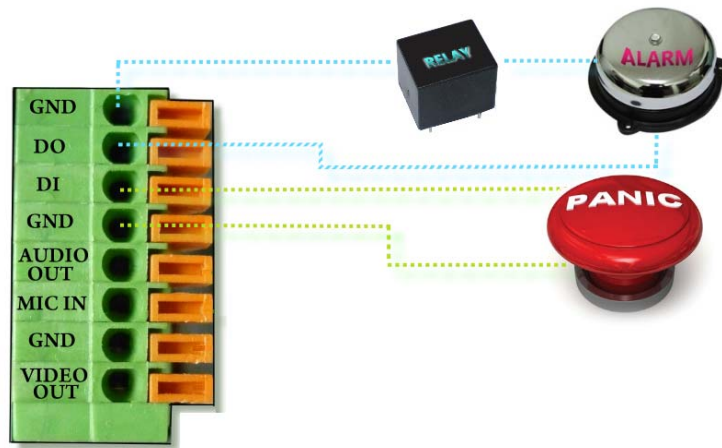
1. ONLY use package power adapter supplied with the Internet. Otherwise, the product may be damaged.

2.2.2 ICA-5260V I/O Control Instruction

I/O Connection

Please connect the GND & DO pin to the external relay (buzzer) device.

Please connect the GND & DI pin to the external trigger device.



I/O PIN definition

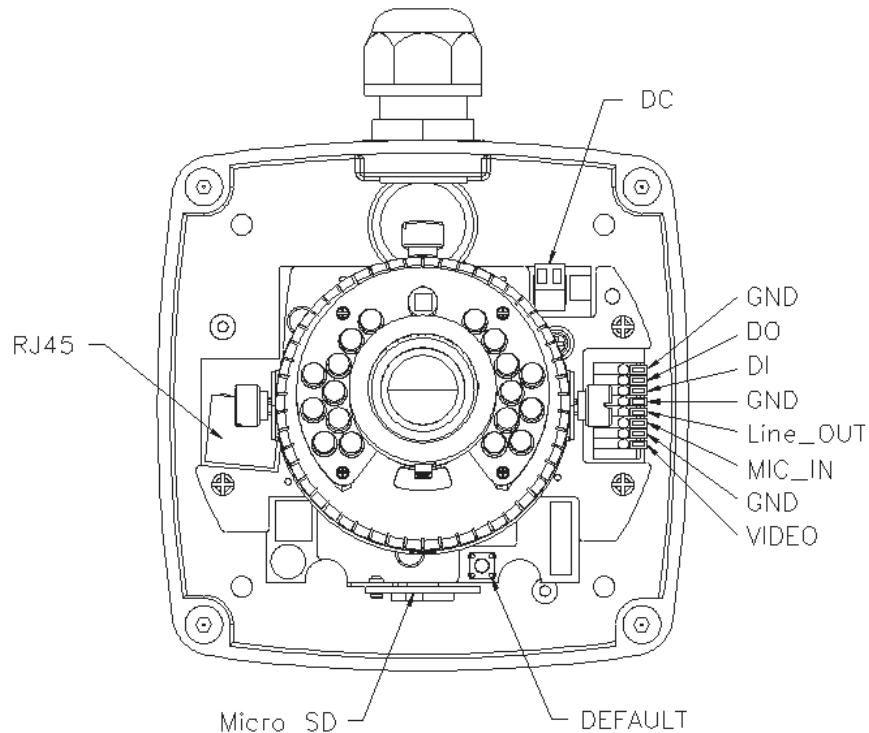
- GND (Ground): Initial state is LOW
- DO (Digital Output): 5V DC
- DI (Digital Input): Max. 50mA, 5V DC

2.3 Hardware Installation

2.3.1 Physical Installation

1. Connector Instruction

Remove the dome cover and you will see the structure as shown below.

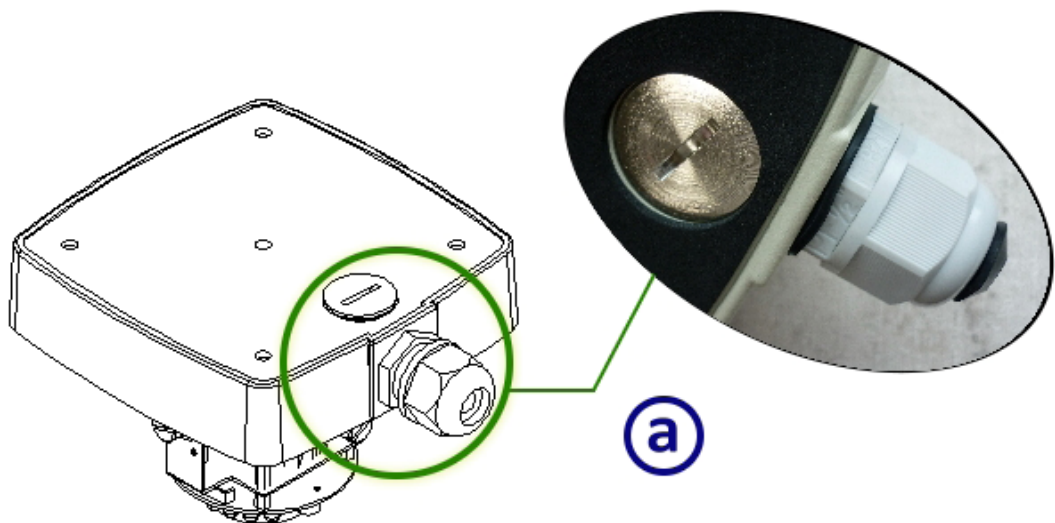


Connect power adapter first, then connect the IP Camera to PC or network, and set up the network configurations according to the network environment. The following picture shows a 12V DC connector for adapter jack plug.

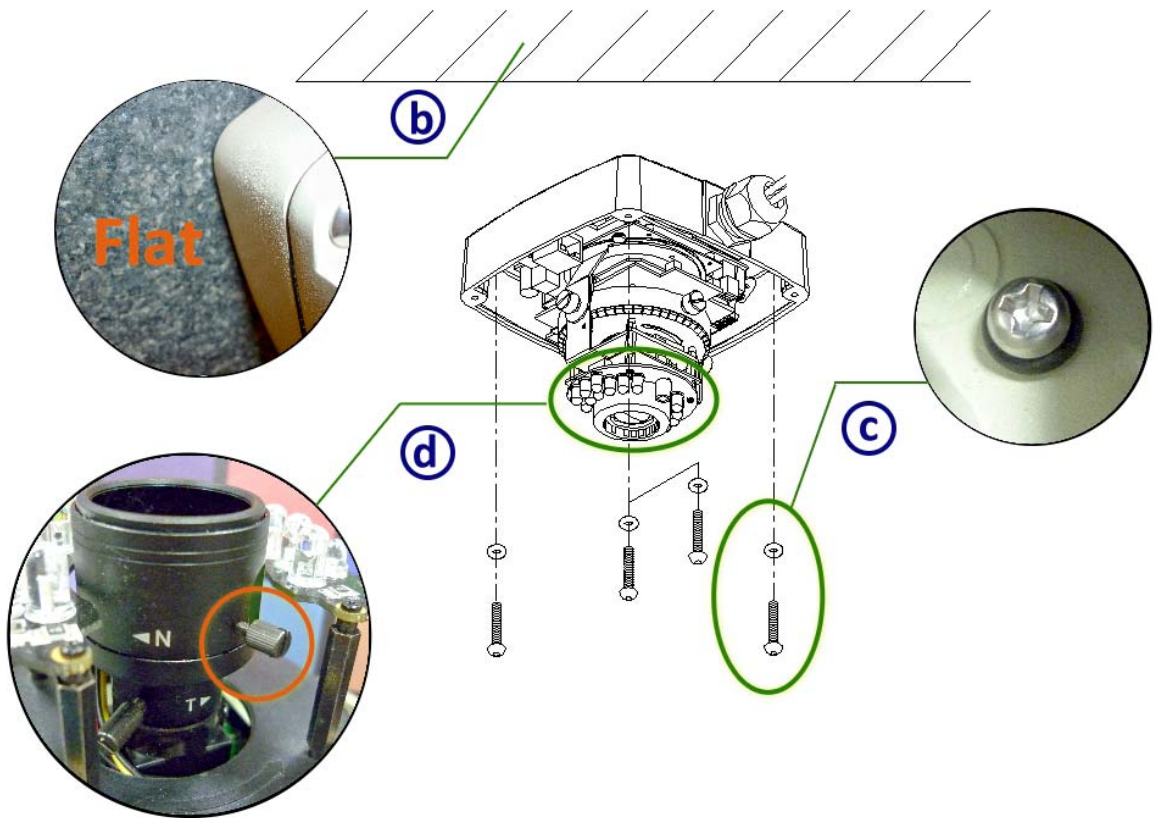


1. In order to ensure IP66 waterproof level, please install the vandal dome according to the instructions.

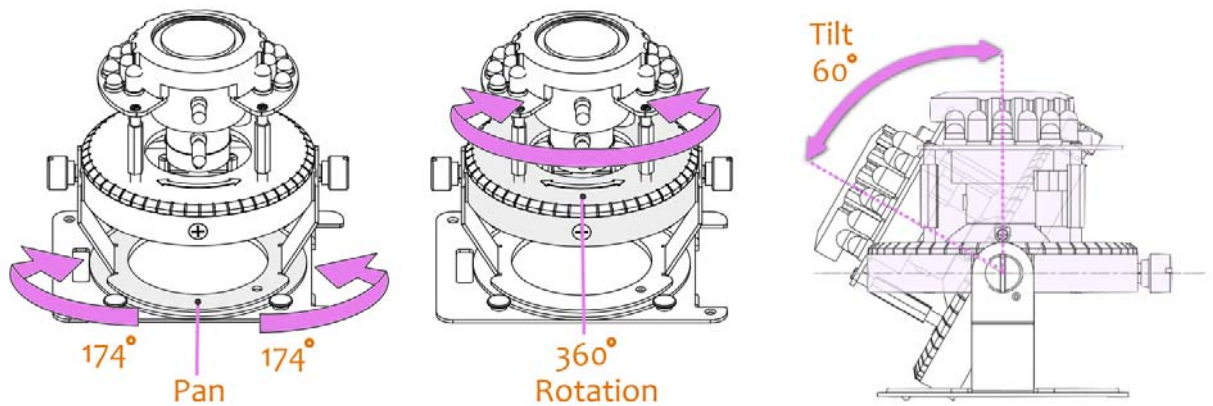
- a. The unused cable outlet hole must be closed, and the waterproof connector on the used hole must be locked closely.



- b. We recommend the bottom of housing be set on the smooth flat and closely seal with the surface.
- c. When you mount the camera housing on the ceiling or wall, please use the screws with the black rubber o-rings. Without the o-ring, the water may seep into the machine.
- d. Turn and loose the control stick, shift right and left to adjust the vari-focal lens until the image becomes clear, then turn and tighten the stick to fix it.

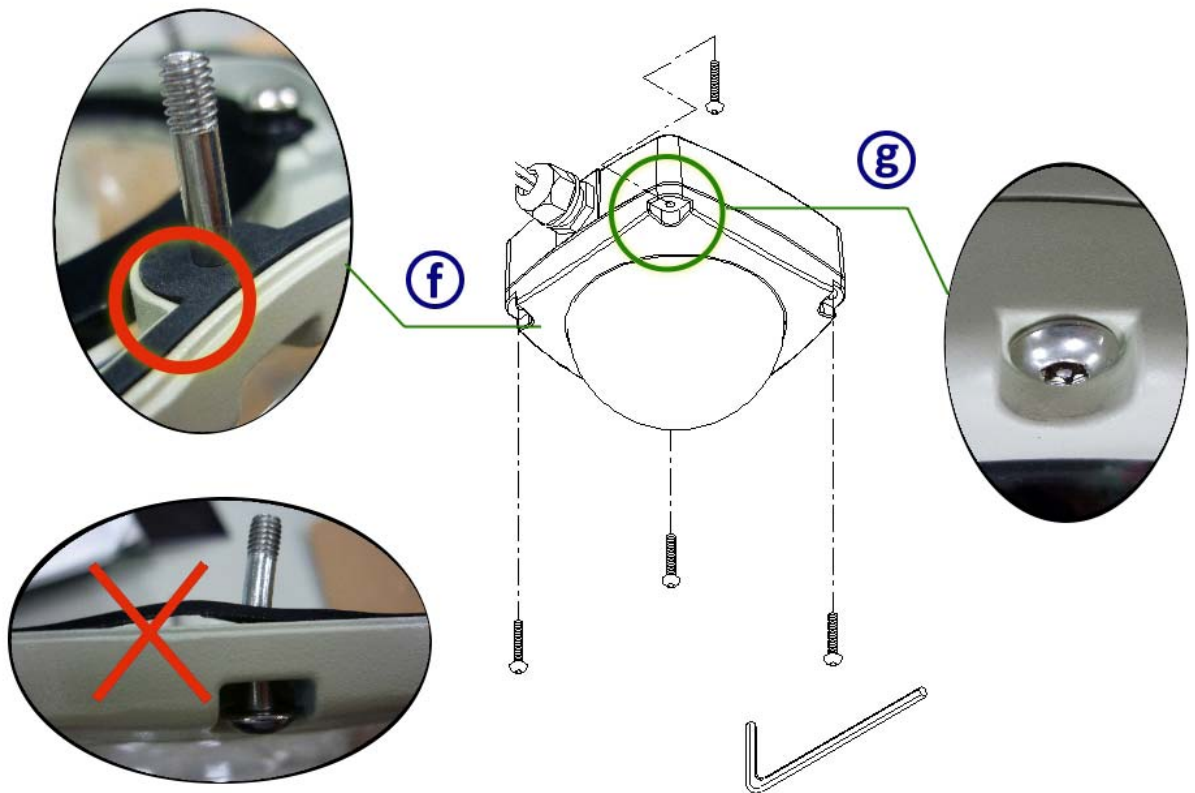


e. Use the 3-axis bracket to adjust the camera to an appropriate angle.



f. Before you close the dome cover, make sure that the black rubber band sticks to the inside of the cover completely. Crooked or uneven rubber band may cause the waterproof defective.

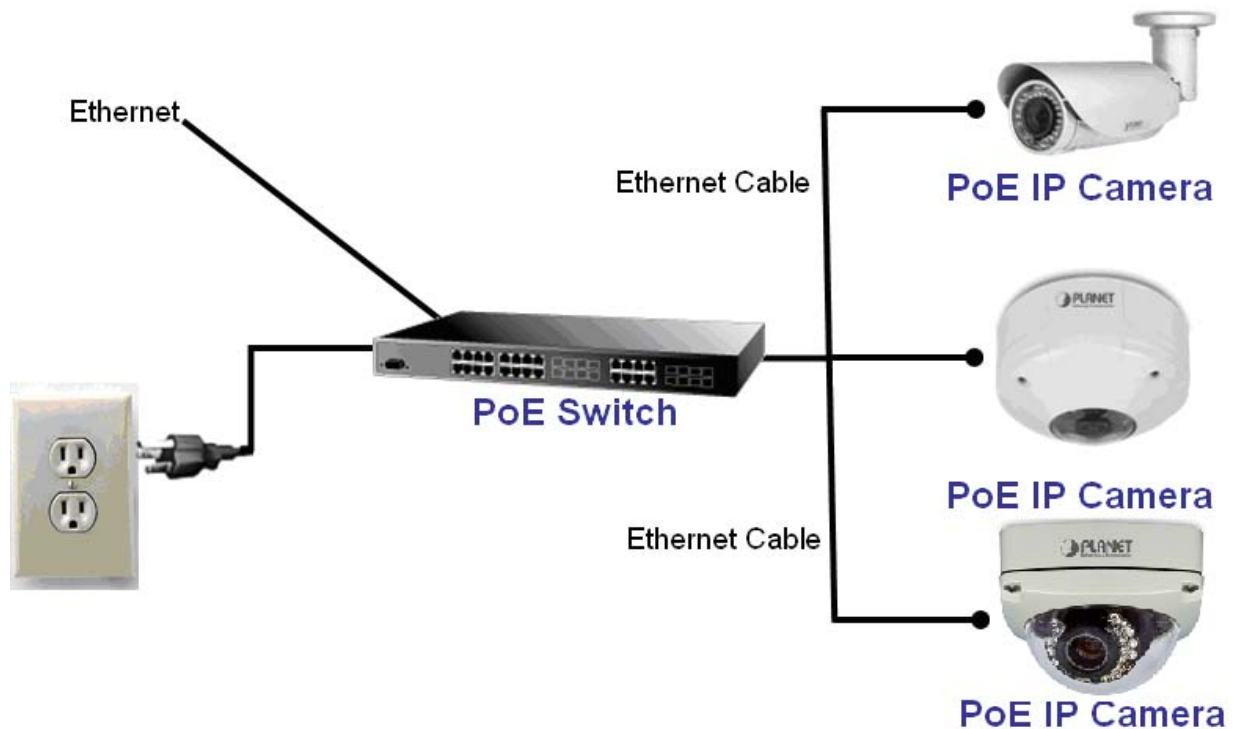
g. Lock tightly the screws on the dome cover to ensure there's no gap between the lid and base.



1. When you connect cables to machine, we advise to use a hose to include all the cables inside instead of plugging in several cables separately, because water may seep down the gap of cables into machine. You can also seal the connector hole with silicone after installation.

2. PoE (Power over Ethernet)

Power over Ethernet (PoE) is a technology that integrates power into a standard LAN infrastructure. It enables power to be provided to the network device, such as an IP phone or a network camera, using the same cable as that is used for network connection. It eliminates the need for power outlets at the camera locations and enables easier application for uninterruptible power supplies (UPS) to ensure 24 hours a day, 7 days a week operation.



2.4 Initial Utility Installation

This chapter shows how to quickly set up your H.264 camera. The camera is with the default settings. However, to help you find the networked camera quickly the windows utility PLANET IP Installer can search the cameras in the network that will help you to configure some basic setting before you start advanced management and monitoring.

1. Insert the bundled CD into the CD-ROM drive to launch the auto-run program. Once completed, a welcome menu screen will appear.
2. Click the “PLANET IPInstaller II” hyperlink; you will see the dialog box as shown below.



1. If the welcome screen does not appear, click “**Start**” at the taskbar. Then, select “**Run**” and type “**D:\Utility\PLANETIPinstaller\PLANETIPinstaller.exe**”, assume D drive is your CD-ROM drive.

When you install the camera in a LAN environment, you may execute PLANET IP Installer to discover camera’s IP address and set up related parameters in the camera.

2.4.1 Searching and Configuring Network by PLANET IP Installer

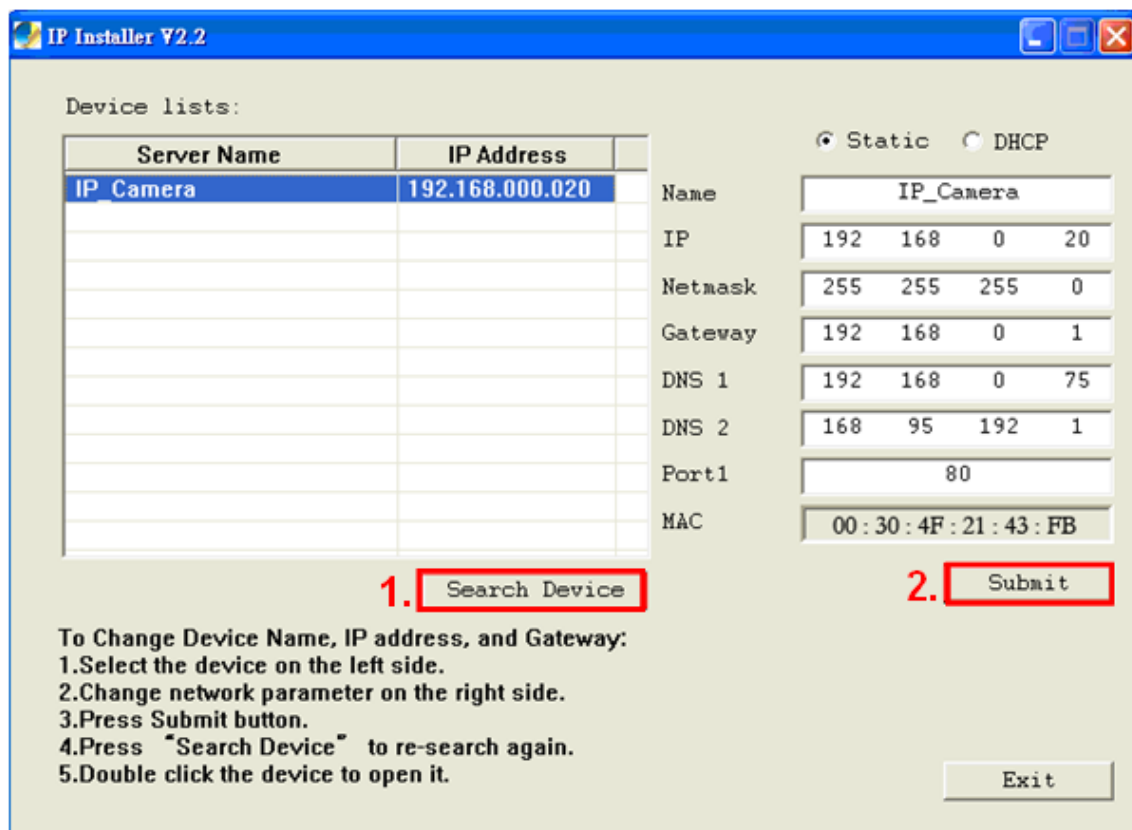
When you install the Camera in a LAN environment, you have two easy ways to search your Cameras by PLANET IP Installer or UPnP discovery. Here is the way to execute PLANET IP Installer to discover Camera’s IP address and set up related parameter in a Camera.

Searching and Configuring Network

1. OS: Windows XP SP2 or above. If the following “**Windows Security Alert**” pops up, please click “**Unblock**”.



3. The GUI of IP Installer is as follows (Default IP: 192.168.0.20).

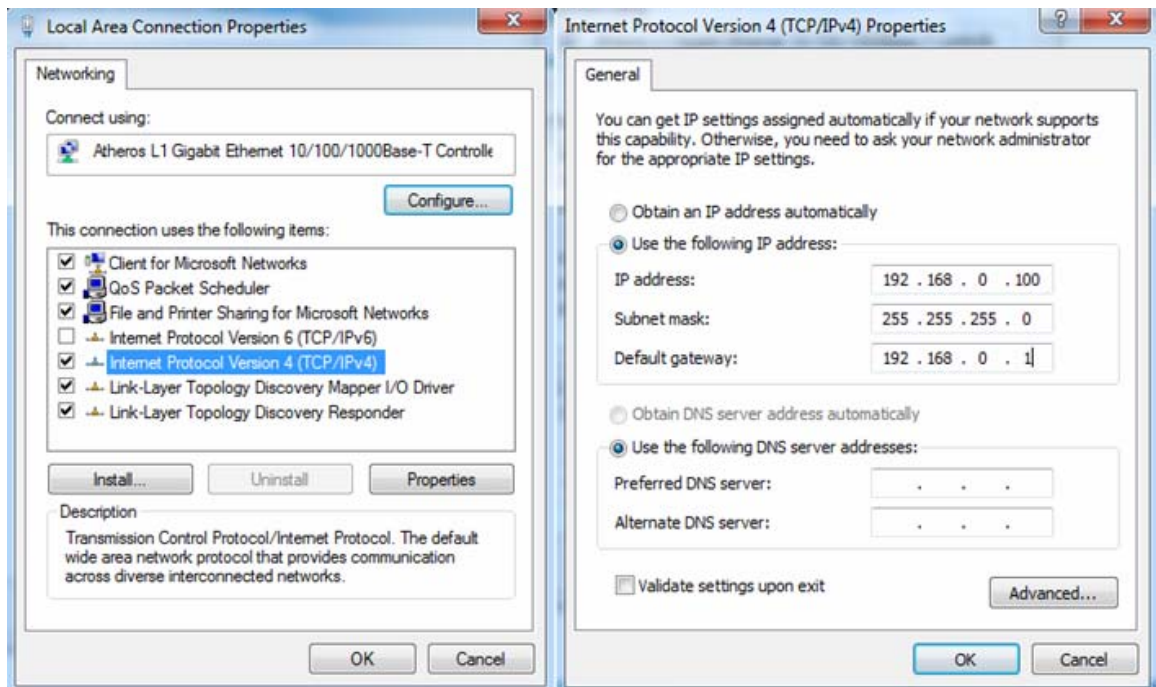


(1) IP Installer will search all IP Cameras connected on LAN. The user can click **“Search Device”** to search again.

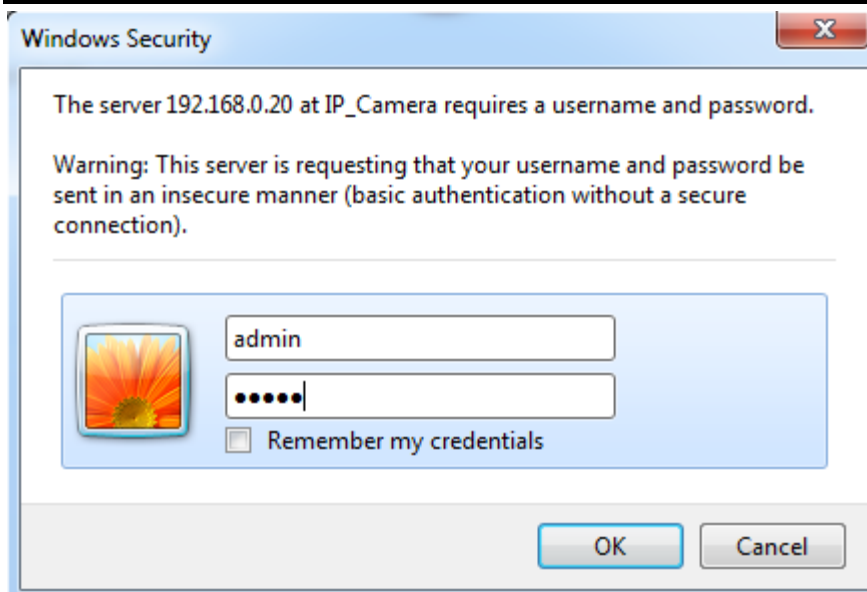
(2) Click one of IP Cameras listed on the left side of IP Installer, then the network configuration of that IP Camera will be listed on the right side. If parameters change, click on **“Submit”**. Then, the network configuration will be changed. Just click **“OK”** to reboot



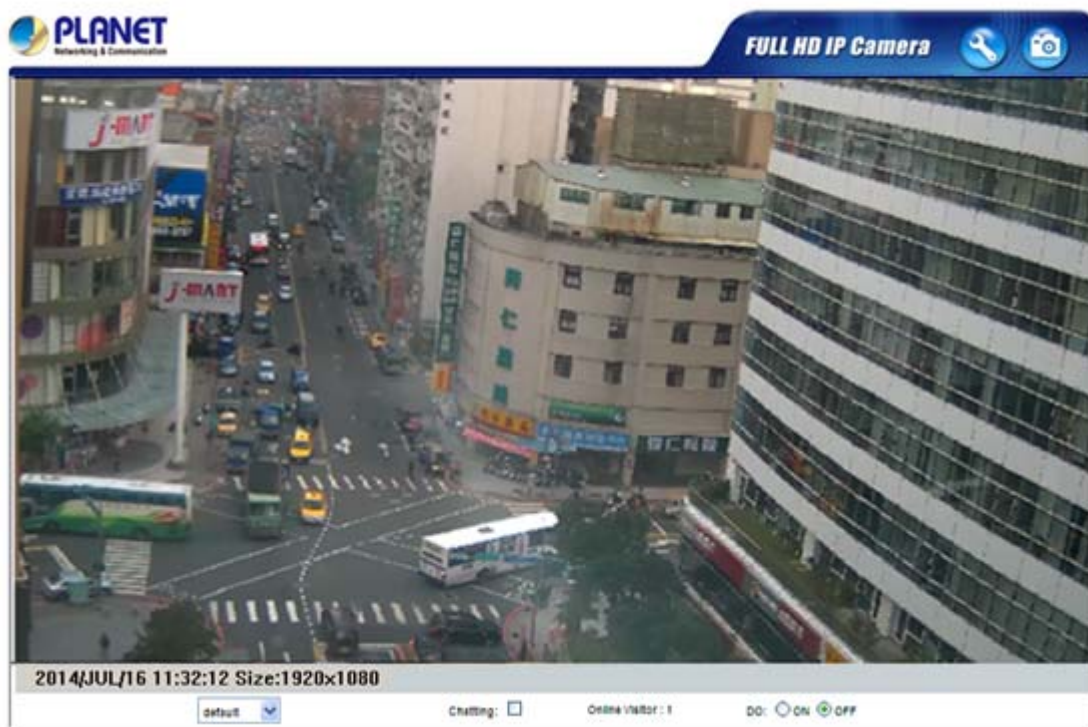
- (3) Please make sure the subnet of PC IP address and IP CAM IP address are the same.
IP CAM IP address: 192.168.0.20
PC IP address: 192.168.0.100
- (4) Different Subnets:
IP CAM IP address: 192.168.0.20
PC IP address: 192.168.1.100
- (5) To Change PC IP addresses:
Control Panel → Network Connections → Local Area Connection Properties → Internet Protocol (TCP/IP) → Properties
Please make sure your IP Camera and PC have the same Subnet. If not, please change IP Camera IP subnet or PC IP subnet accordingly.



- (6) A quick way to access remote monitoring is to left-click the mouse twice on a selected IP Camera listed on "Device list" of PLANET IP Installer. An IE browser will be opened.
- (7) Then, please key in the default "**Username: admin**" and "**Password: admin**" in the following message box.



(8) If the user name and password are input correctly, the following web page will be displayed.



2.5 Setting up ActiveX to use the Internet Camera

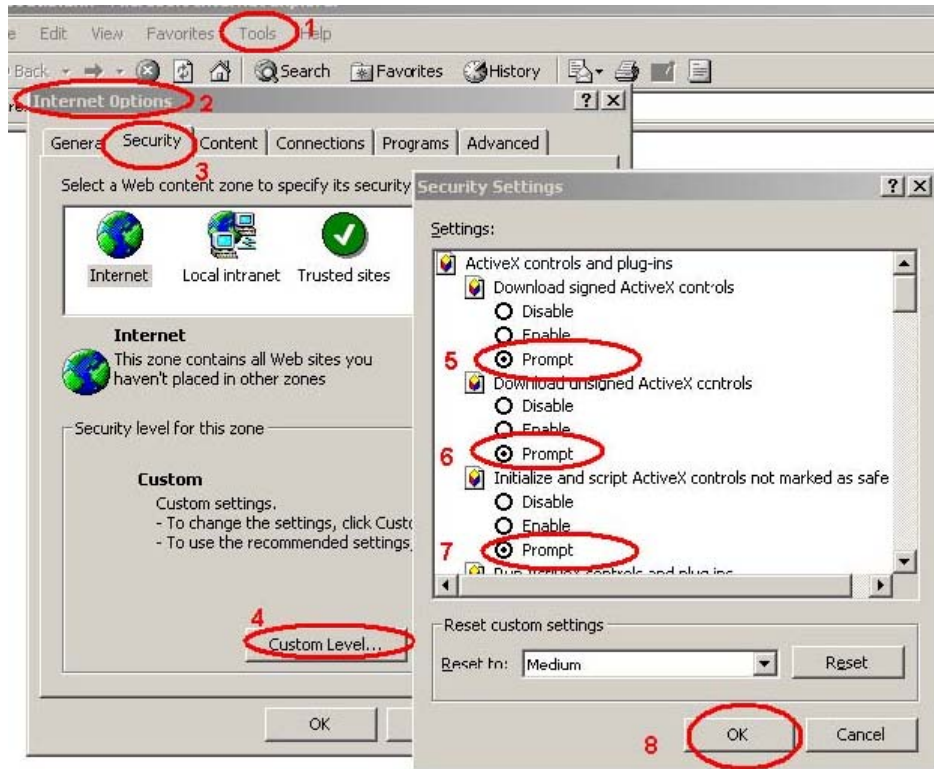
The Internet camera web pages communicate with the Internet camera using an ActiveX control. The ActiveX control must be downloaded from the Internet camera and installed on your PC. Your Internet Explorer security settings must allow for the web page to work correctly. To use the Internet camera, user must set up his IE browser as follows:

2.5.1 Internet Explorer 6 for Windows XP

From your IE browser → "Tools" → "Internet Options..." → "Security" → "Custom Level...", please set up your "Settings" as follows:

Set up the first 3 items

- *Download the signed ActiveX controls*
- *Download the unsigned ActiveX controls*
- *Initialize and script the ActiveX controls not masked as safe to Prompt*



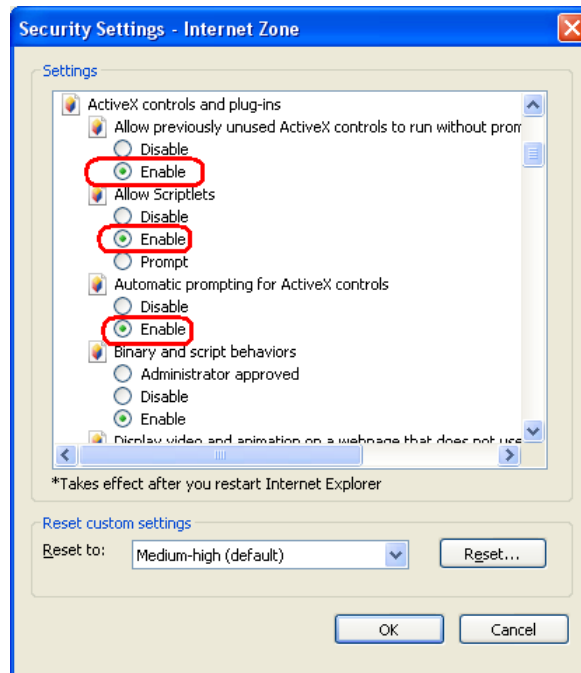
By now, you have finished your entire PC configuration for Internet camera.

2.5.2 Internet Explorer 7 for Windows XP

From your IE browser → "Tools" → "Internet Options..." → "Security" → "Custom Level...", please set up your "Settings" as follows:

Set up the first 3 items

- *Allow previously unused ActiveX control to run...*
- *Allows Scriptlets*
- *Automatic prompting for ActiveX controls*

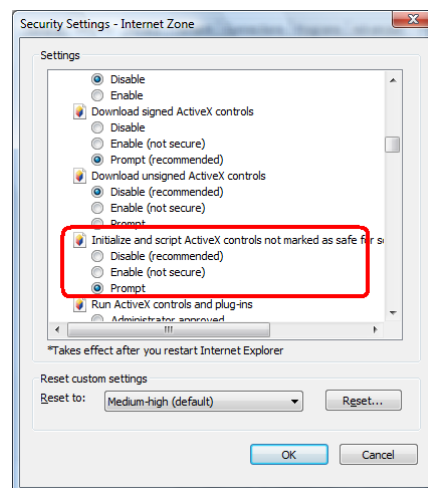
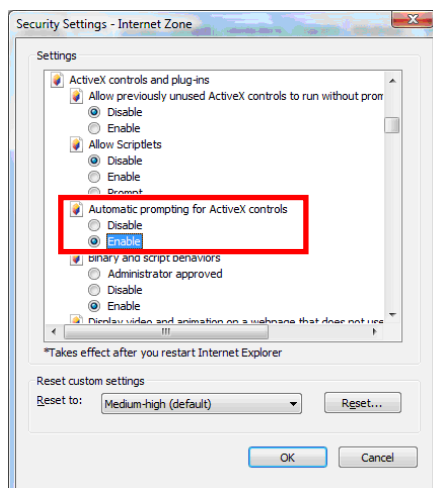


By now, you have finished your entire PC configuration for Internet camera.

2.5.3 Internet Explorer 7 for Windows Vista

From your IE browser → "Tools" → "Internet Options..." → "Security" → "Internet" → "Custom Level...", please set up your "Settings" as follows:

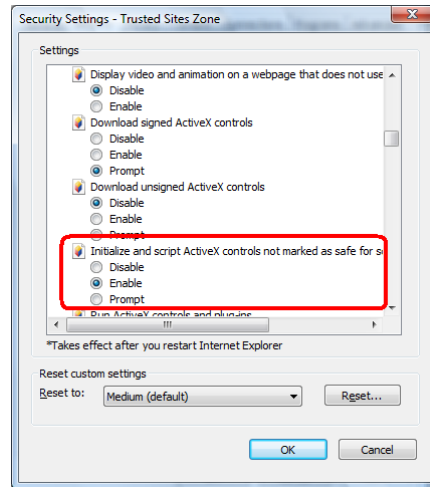
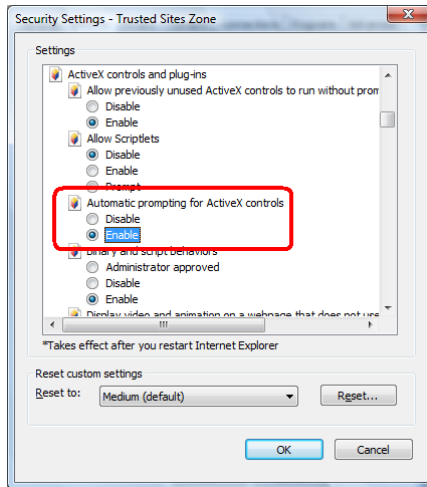
- Enable "Automatic prompting for ActiveX controls"
- Prompt "Initialize and script active controls not marked..."



From your IE browser → "Tools" → "Internet Options..." → "Security" → "Trusted Sites" → "Custom Level...", please set up your "Settings" as follows:

- Enable "Automatic prompting for ActiveX controls"

- Prompt "Initialize and script active controls not marked...."



By now, you have finished your entire PC configuration for Internet camera.

Chapter 3 Web-based Management

This chapter provides setup details of the Internet camera's Web-based Interface.

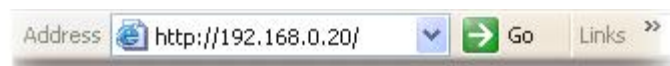
3.1 Introduction

The Internet camera can be configured with your Web browser. Before configuring, please make sure your PC is under the same IP segment with Internet camera.

3.2 Connecting to Internet Camera

- Use the following procedure to establish a connection from your PC to the camera.
- Once connected, you can add the camera to your Browser's Favorites or Bookmarks.

Start the web browser on the computer and type the IP address of the camera. The default IP: "<http://192.168.0.20>"



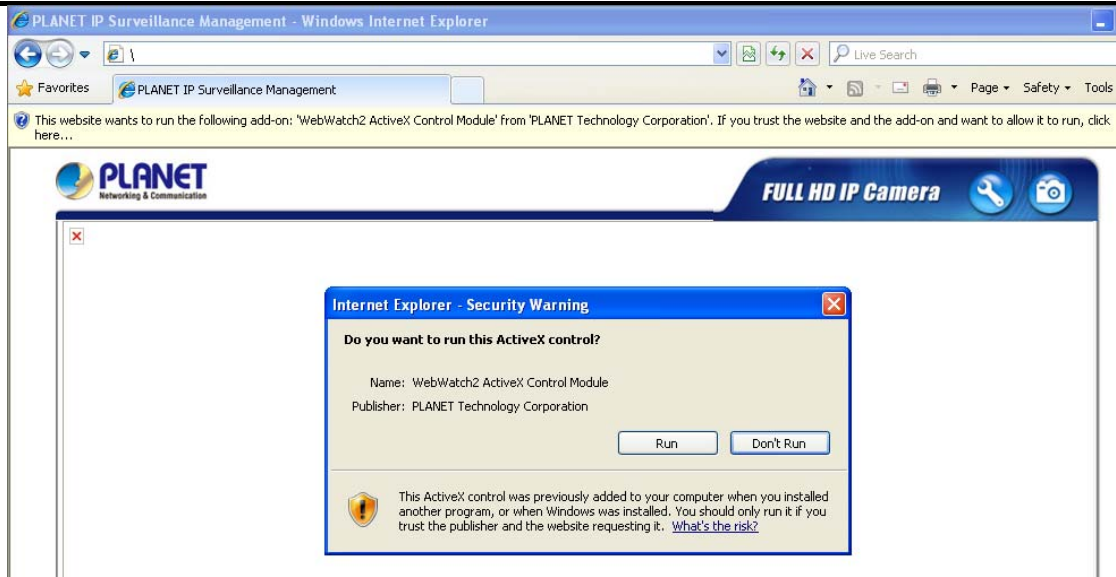
The login window of Internet camera will appear. Default login **user name and password** are **admin**.



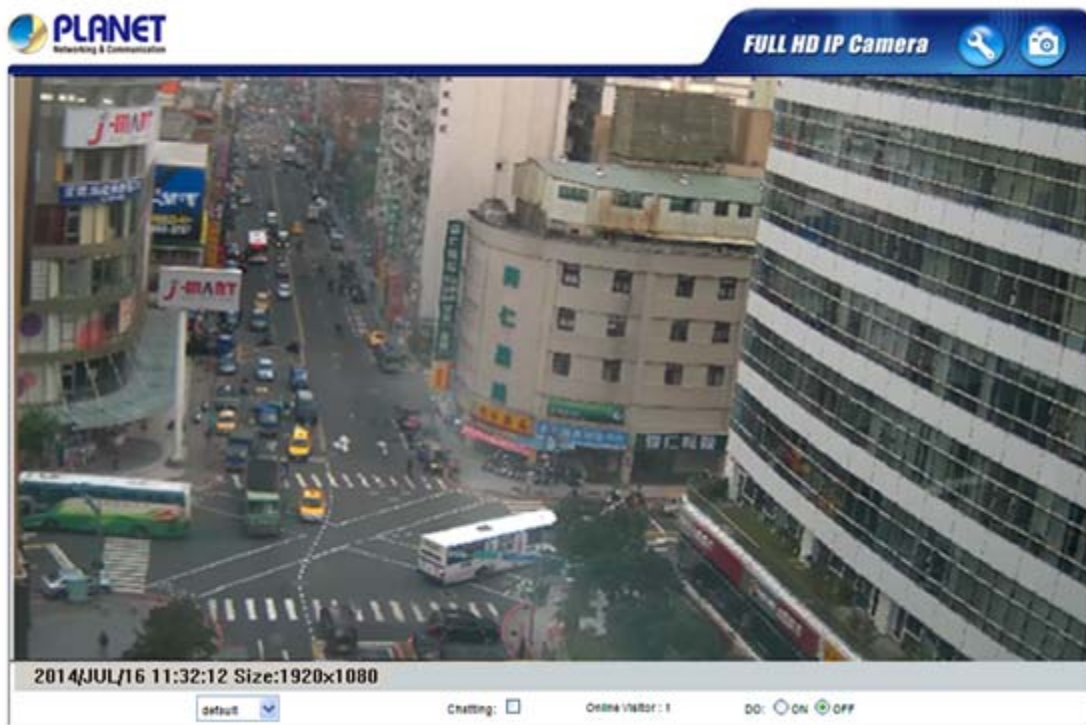
Note

1. If the User name and Password have been changed with PLANET IP Installer, please enter the new User name and Password here.

Web browser may display the "**Security Warning**" window. Select "**Yes**" to install and run the ActiveX control into your PC.



After the ActiveX control is installed and run, the first image will be displayed.





Note

1. If you log in the camera as an ordinary user, setting function will not be available. If you log in the camera as the administrator, you can perform all the settings provided within the device.

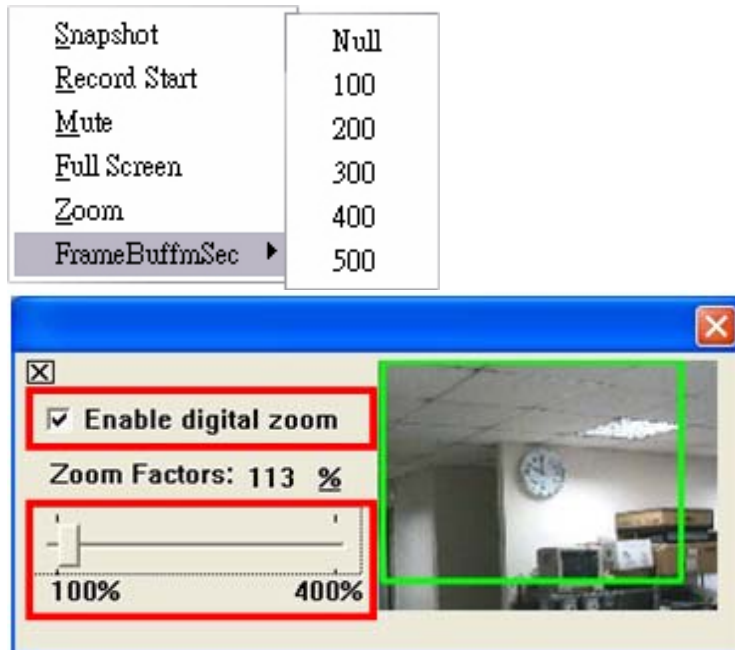
Chapter 4 Live Viewing

Start-up screen will be shown below whether you are an ordinary user or an administrator.





(1) Configure	 Get into the administration page.
(2) Snapshot	 Video Snapshot
(3) Status Bar	Show system time, video resolution, and video refreshing rate.
(4) Screen Size	Select video screen “ default, 1/2x, 1x, 2x ” for view with current camera screen size.
(5) Chatting Function	IP Camera supports 2-way audio. Click the “ Chatting ” check box. Then you can use microphone which connects to the PC to talk to server side, which is IP Camera side
(6) Online Visitor	Shows how many people are connected to this IP camera.
(7) DO Control	Control the digital output which is connected to this camera.

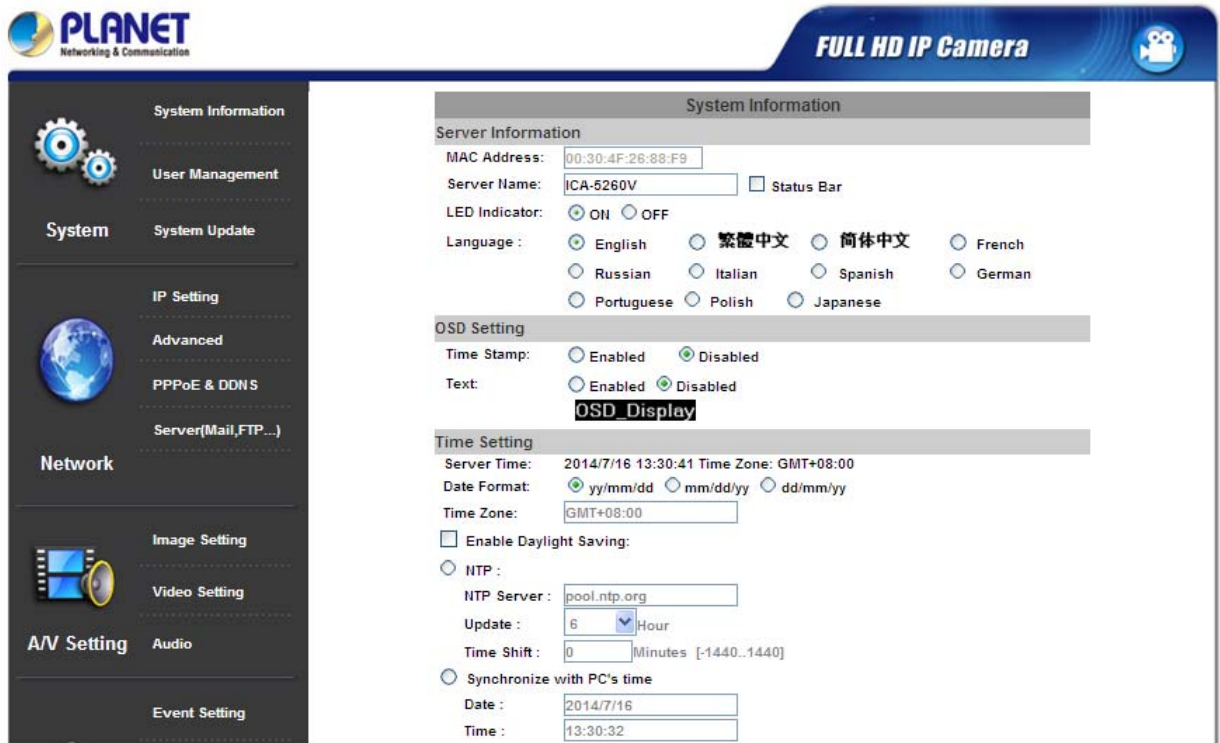
Double-click the video; it will change to full screen mode. Press “**Esc**” or double-click the video again. It will change back to normal mode. Right-click the mouse on the video, it will show a pop-up menu.



(1) Snapshot	Save a JPEG picture.
(2) Record Start	Record the video in the local PC. It will ask you where to save the video. To stop recording, right-click the mouse again. Select “ Record Stop ”. The video format is AVI. Use Microsoft Media Player to play the recorded file.
(3) Mute	Turn off the audio. Click again to turn it on.
(4) Full Screen	Full-screen mode.
(5) Zoom	Enable zoom-in and zoom-out functions. Select “ Enable digital zoom ” option first within the pop-up dialogue box and then drag and drop the bar to adjust the zoom factors.
(6) FrameBufferSec	Build a buffer to accumulate several video frames and play at a regular interval. This function can make video smooth-going when the Network speed is slow and lag. If you select “100”, the interval between every frame is fixed to 100 mSec. The slower the Network is, the bigger value should be selected. The default value is null.

Chapter 5 Configuration

Click  to get into the administration page. Click  to go back to the live video page.



System Information

Server Information

MAC Address: 00:30:4F:26:88:F9

Server Name: ICA-5260V Status Bar

LED Indicator: ON OFF

Language : English 繁體中文 简体中文 French
 Russian Italian Spanish German
 Portuguese Polish Japanese

OSD Setting

Time Stamp: Enabled Disabled

Text: Enabled Disabled

OSD Display

Time Setting

Server Time: 2014/7/16 13:30:41 Time Zone: GMT+08:00

Date Format: yy/mm/dd mm/dd/yy dd/mm/yy

Time Zone: GMT+08:00

Enable Daylight Saving:

NTP :

NTP Server : pool.ntp.org

Update : 6 Hour

Time Shift : 0 Minutes [-1440..1440]

Synchronize with PC's time

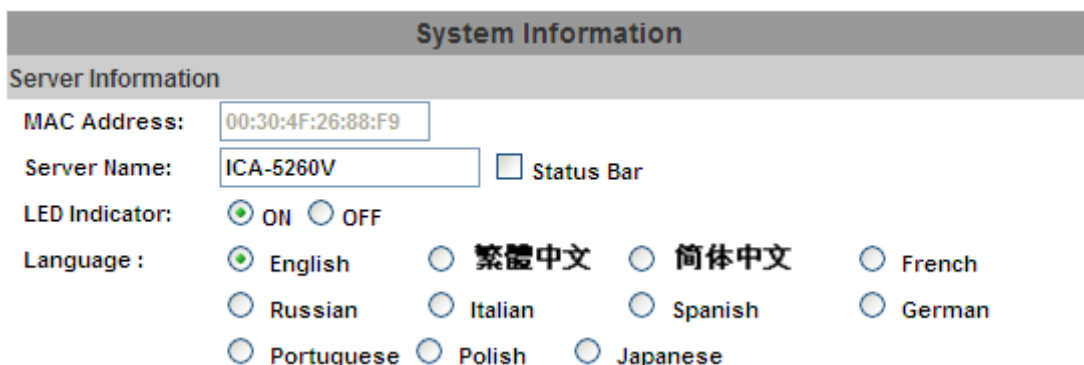
Date : 2014/7/16

Time : 13:30:32

5.1 System

5.1.1 System Information

1. Server Information: Set up the camera name, select language, and set up the camera time.



System Information

Server Information

MAC Address: 00:30:4F:26:88:F9

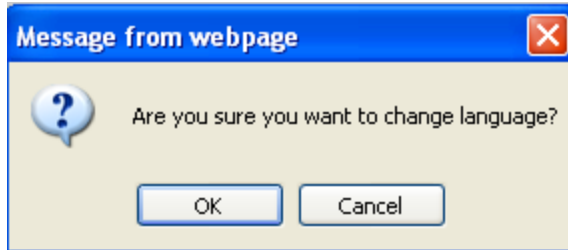
Server Name: ICA-5260V Status Bar

LED Indicator: ON OFF

Language : English 繁體中文 简体中文 French
 Russian Italian Spanish German
 Portuguese Polish Japanese

Server Name	This is the Camera name. This name will show on the IP Installer.
--------------------	---

Select language	There are English, Traditional Chinese, Simplified Chinese, French, Russian, Italian, Spanish, German, Portuguese, Polish and Japanese to select. When changed, it will show the following dialogue box for the confirmation of changing language.
------------------------	--



2. OSD Setting: Select a position where date and time stamp / text are shown on the screen.



Moreover, click Text Edit to enter to adjust the OSD contents which include Size and Alpha of text.

Finally, click  button to reserve the setting.



3. Server time setting : Select options to set up time - **“NTP”, “Synchronize with PC’s time”, “Manual”, “The date and time remain the same”.**

Time Setting

Server Time: 2014/7/16 13:47:09 Time Zone: GMT+08:00

Date Format: yy/mm/dd mm/dd/yy dd/mm/yy

Time Zone:

Enable Daylight Saving:

NTP :

NTP Server :

Update : Hour

Time Shift : Minutes [-1440..1440]

Synchronize with PC's time

Date :

Time :

Manual

Date :

Time :

The date and time remain the same

5.1.2 User Management

IP camera supports three different users -- administrator, general user, and anonymous user.

User Management

Anonymous User Login

YES NO

Universal Password (differs by IP Address)

YES NO

Add User

Username:

Password:

Confirm:

User List

Username	User Group	Modify	Remove
admin	Administrator	Edit	-----

Anonymous User Login	Yes : Allow anonymous login No : Need user name & password to access this IP camera
Universal password	When user forgets user name and password to login camera, fill out universal password in MAC address and IP in specific web to login this camera. Note: this user name and password are only for this camera.

Add user	Type the user name and password, then click “ Add/Set ”.
-----------------	---

IP Address:

MAC:

UserName

Password

5.1.3 System Update

System Update

Firmware Upgrade

Firmware Version: VG1.0.14_PL

New Firmware:

Reboot System

Factory Default

Setting Management

Save As a File:

Right click the mouse button on Setting Download and then select Save As to save current system's setting in the PC.

New Setting File:

Firmware Upgrade	To update the firmware online, click “ Browse... ” to select the firmware. Then click “Upgrade” to proceed.
Reboot System	Re-start the IP camera.
Factory default	Delete all the settings in this IP camera.
Setting Management	User may download the current setting to PC, or upgrade from previous saved setting.

Setting download:

Right-click the mouse button on Setting Download → Select “**Save AS...**” to save current IP CAM

setting in PC → Select saving directory → Save

Upgrade from previous setting:

Browse → search previous setting → open → upgrade → Setting update confirm → click [index.html](#).

To return to main page

5.2 Network

5.2.1 IP Setting

IP camera supports DHCP and static IP.

IP Setting	
IP Assignment	
<input type="radio"/> DHCP	
<input checked="" type="radio"/> Static	
IP Address:	<input type="text" value="192.168.0.20"/>
Subnet Mask:	<input type="text" value="255.255.255.0"/>
Gateway:	<input type="text" value="192.168.0.1"/>
DNS 0:	<input type="text" value="168.95.1.1"/>
DNS 1:	<input type="text" value="168.95.1.2"/>
IPv6 Assignment	
<input checked="" type="checkbox"/> IPv6 Enabled:	
<input type="checkbox"/> Manually setup the IPv6 address:	
DHCPv6:	<input type="radio"/> Enabled <input checked="" type="radio"/> Disabled
IPv6 Address:	<input type="text" value="fe80::20f:dff:fe24:933e"/>
Port Assignment	
Web Page Port:	<input type="text" value="80"/>
HTTPS Port:	<input type="text" value="443"/> HTTPS Setting
UPnP	
UPnP:	<input checked="" type="radio"/> Enabled <input type="radio"/> Disabled
UPnP Port Forwarding:	<input type="radio"/> Enabled <input checked="" type="radio"/> Disabled
External Web Port:	<input type="text" value="80"/>
External HTTPS Port:	<input type="text" value="443"/>

External RTSP Port:

RTSP Setting

RTSP Server: Enabled Disabled

RTSP Authentication:

RTSP Port:

RTP Start Port: [1024..9997]

RTP End port: [1027..10000]

Multicast Setting (Based on the RTSP Server)

Streaming 1:

IP Address: [224.3.1.0 ~ 239.255.255.255]

Port: [1 ~ 65535]

TTL: [1 ~ 255]

Streaming 2:

IP Address: [224.3.1.0 ~ 239.255.255.255]

Port: [1 ~ 65535]

TTL: [1 ~ 255]

ONVIF

ONVIF: v2.10/v1.02 v1.01 Disabled

Security: Enabled Disabled

RTSP Keepalive: Enabled Disabled

Bonjour


Bonjour: Enabled Disabled

Bonjour Name: @00:30:4F:24:04:9B

LLTD (Link Layer Topology Discovery)

LLTD: Enabled Disabled

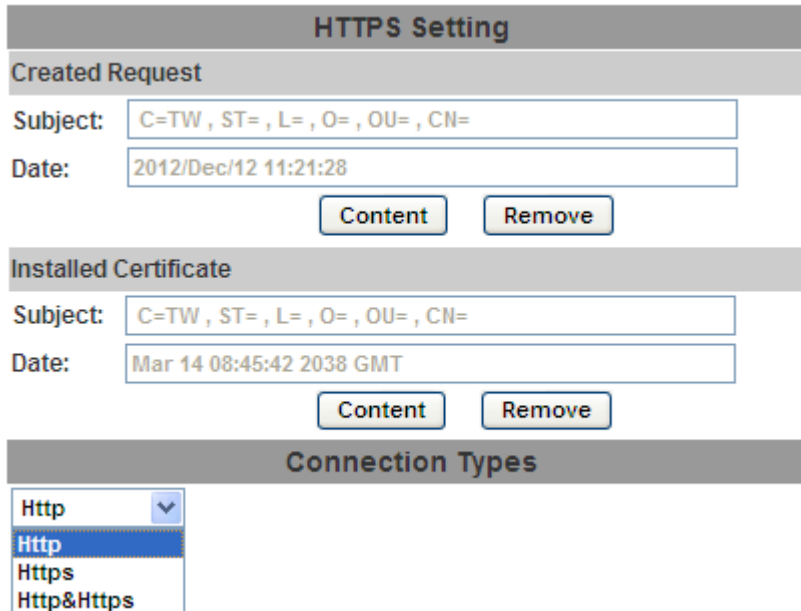
DHCP	Using DHCP, IP camera will get all the network parameters automatically.
Static IP	Please type in IP address, subnet mask, gateway, and DNS manually.
IPv6 Assignment	IPv6 is a newer numbering system that provides a much larger address pool than IPv4, which accounts for most of today's Internet traffic. You can set up IPv6 manually by keying in Address, Gateway, and DNS, or enabling DHCP to assign the IP automatically.
Port Assignment	User may need to assign a different port to avoid conflict when setting up IP assignment. (1) Web Page Port: set up web page connecting port and video transmitting port (Default: 80) (2) RTSP Port: setup port for RTSP transmitting (Default: 554) (3) RTP Start and End Port: in RTSP mode, you may use TCP and UDP for connecting. TCP connection uses RTSP Port (554). UDP connection uses RTP Start and End Port.
UPnP	This IP camera supports UPnP. If this service is enabled on your computer, the camera will automatically be detected and a new icon will be added to "My Network Places." Note: UPnP must be enabled on your computer.

UPnP Port Forwarding	When the camera is installed under a router, Enable UPnP Port Forwarding to let the router open ports so that the video streams can be sent out from a LAN. Set Web Port, Http Port, and RTSP port, and make sure your router supports UPnP and the function has been activated.
RTSP Server	enable or disable RTSP server
RTSP Authentication	<p>"Disable" means everyone who knows your camera IP Address can link to your camera via RTSP. No username and password are required.</p> <p>Under "Basic" and "Digest" authentication mode, the camera asks the user to give username and password before allows accessing. The password is transmitted as clear text under basic mode, which provides a lower level of security than under digest mode.</p> <p>Make sure your media player supports the authentication schemes</p>
RTSP port	RTSP Port: setup port for RTSP transmitting (Default: 554) RTSP Start and End Port: in RTSP mode, you may use TCP and UDP for connecting. TCP connection uses RTSP Port (554). UDP connection uses RTSP Start and End Port.
Multicast Setting (Based on the RTSP Server)	<p>Multicast is a bandwidth conservation technology. This function allows several users to share the same packet sent from IP camera. To use Multicast, appoint IP Address and port here. TTL means the life time of packet, The larger the value is, and the more users can receive the packet.</p> <div style="border: 1px solid black; padding: 5px; margin-top: 10px;">  <p>To use Multicast, be sure to enable the function "Force Multicast RTP via RTSP" in your media player (ex. VLC media player). Then key in the RTSP path of your camera: "rtsp://(IP address)"/" to receive the multicast.</p> </div>
ONVIF	The IP camera supports ONVIF v1.01 / v1.02 / v2.10 standard for integration. Under ONVIF connection, the video will be transmitted by RTSP. Be sure to enable the RTSP server in IP setting, or you're not able to receive the video via ONVIF.
RTSP Keepalive	When the function is enabled, the camera checks once in a while if the user who links to the camera via ONVIF still keeps connecting. If the connection is broken, the camera will stop transmitting video to user.
Bonjour	This function enables MAC systems to link to this IP camera. Key in the name here. The web browser "Safari" also has Bonjour function. Tick "Include Bonjour" in the bookmark setting, and you can see the IP camera appearing under the bonjour category. Click the icon to connect the IP camera.
LLTD	If your PC supports LLTD, enable this function and then you can check the connection status, properties, and device position (like IP address) of this IP Camera in the network map. In the computer running Windows Vista or Windows 7, you can find LLTD through the path:

Call out the Control Panel → Network and Internet → Network and Sharing Center → Click "See full map"

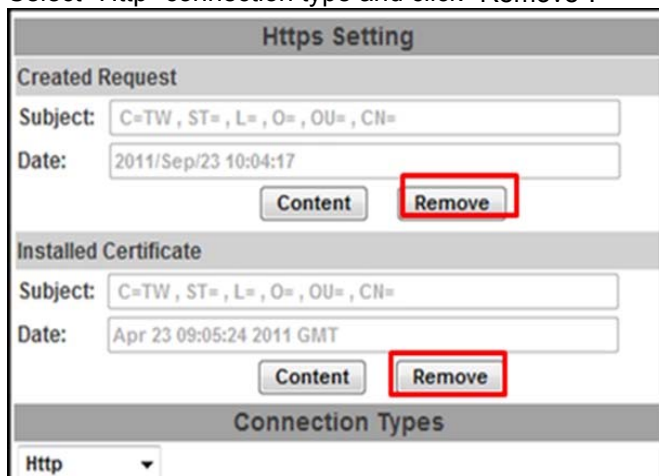
5.2.2 Advanced

5.2.2.1 Https (Hypertext Transfer Protocol Secure)



Https can help protect streaming data transmission over the internet on the higher security level. You can select the connection type. "Https" means user cannot connect the camera via Http protocol. The Https path will be: "https://(IP address)". If you select "Http & Https", both the Http and Https path can be used to access the camera.

Remove the existing setting: Before setting new request, please remove old secure identification. Select "Http" connection type and click "Remove".



Created Request: Setting the secure identification and apply it

Https Setting

Create Request

Country:

State or province:

Locality:

Organization:

Organizational Unit:

Common Name:

There are two ways to set Certificate -- Install Signed Certificate or Create Self-Signed Certificate.

Install Signed Certificate

Signed Certificate:

Create Self-Signed Certificate

Country:

State or province:

Locality:

Organization:

Organizational Unit:

Common Name:

Validity: Days

5.2.2.2 SNMP (Simple Network Management Protocol)

SNMP provides a simple framework for administering networked hardware. To manage the IP camera, you have to prepare an MIB browser or similar tools first. SNMPv1, SNMPv2c, and SNMPv3 can be enabled simultaneously. SNMPv1 and SNMPv2c:

SNMP

SNMP Setting

SNMPv1 SNMPv2c

Write Community:

Read Community:

The term "Community name" in SNMPv1 and SNMPv2c can be roughly regarded as key. The person who has the community name has the authority to read or edit the information of IP camera via SNMP.

Tick the box to enable SNMPv1 or SNMPv2c protocol, and specify the community name for write (read and write) and read (read-only). The user who use read community name to access the IP camera cannot modify any data of this camera.

SNMPv3:

SNMPv3

Write Security Name:

Authentication Type: MD5 SHA

Authentication Password:

Encryption Type: DES AES

Encryption Password:

Read Security Name:

Authentication Type: MD5 SHA

Authentication Password:

Encryption Type: DES AES

Encryption Password:

For data security reason, the authentication and encryption assurances are added when developing SNMPv3. The user has to give not only the security name (the same as "community name" in v1 and v2c, or sometimes we call it "context name") but the password in order to access the IP camera. Please set security name, authentication type, authentication password, encryption type, encryption password of write and read respectively. The password must be 8~64 bits in length.

Different from in SNMPv1 and v2c, the user has to create an account when using SNMPv3. In the account parameters, key-in the security name and password you set in the camera to get access.

SNMPv1/SNMPv2 Trap:

SNMPv1/v2c Trap

Trap Address:

Trap Community:

Trap Event:

Cold Start Setting Changed Network Disconnected

V3 Authentication Failed SD Insert/Remove

Trap is a mechanism that allows the managed device to send messages to manager instead of waiting passively for polling from the manager. Specify the trap event. When those events happen, the camera will send the ring message to the Trap Address, which is usually the manager's IP address. Trap Community means the community can receive the trap message.

- Cold Start: The camera starts up or reboots.
- Setting changed: The SNMP setting is changed.
- Network Disconnected: The network connection is broken down. (The camera will send trap messages after the network is connected again)
- V3 Authentication Failed: A SNMPv3 user account tries to get authentication but failed. (Due to incorrect password or community)
- SD Insert / Remove: A Micro SD card is inserted or removed.

5.2.2.3 Access List

IP FILTER

IP ADDRESS FILTER Setting

Enable ip address filter

IPv4 Setting:

allow deny

range address: -

IPv4 List:

No.	IP Address	Filter	Action
1	192.168.50.159	allow	<input type="button" value="remove"/>
2	192.168.50.151-192.168.50.161	deny	<input type="button" value="remove"/>
3			<input type="button" value="remove"/>
4			<input type="button" value="remove"/>
5			<input type="button" value="remove"/>
6			<input type="button" value="remove"/>
7			<input type="button" value="remove"/>
8			<input type="button" value="remove"/>
9			<input type="button" value="remove"/>
10			<input type="button" value="remove"/>

Allow admin ip address always access this device

Admin ip address:

You can deny an IP address or a range of IP address so that they cannot access the IP camera. Tick the "enable" box, key-in the IP address you want to deny, select "deny" and then click "Add" to add it to the list.

You can also choose to deny a range of IP address but allow one or several IP addresses of them. Take the above picture for example, IP address 192.168.50.151~161 are not allowed to connect to the camera, but only 192.168.50.159 can access.



In the list "allow" condition must be ranked before "deny" condition.

For example, if we exchange the sequence, set "Deny: 192.168.50.151~192.168.50.161" for the first item and "Allow:192.168.50.159" for the second item in the list, the IP "192.168.50.159" turns out to be denied by the camera because the "deny" condition has the priority according to our ranking way.

5.2.2.4 QoS/DSCP (Quality of Server/Differentiated Services Code-point)

QoS/DSCP

QoS/DSCP Setting

Enable QoS/DSCP

Live Stream: (0~63)

Event / Alarm: (0~63)


Management: (0~63)

DSCP specifies a simple mechanism for classifying and managing network traffic and provides QoS on IP networks. DSCP is a 6-bit in the IP header for packet classification purpose.

The number 0~63 for Live Stream, Event / Alarm, and Management represent the ratio that the bandwidth is divided. For example, if you set 5, 10, and 20 for the three items, then the bandwidth of the three items is 5:10:20. There is no difference between setting "0, 0, 0" or "63, 63, 63" because under these two settings the three items will get equal bandwidth (1/3).

The three streams control the protocols respectively:

- Live Stream (Video and audio): RTP / RTSP
- Event/Alarm: FTP / SMTP / SAMBA / SIP
- Management: HTTPS / HTTP / SNMP


 Note

1. The "Management" stream handles both the live view and the setting area of the web page on which the data is transferred via http/https protocol. If you prefer to distribute more bandwidth when using the web browser to access the camera, please adjust the Management stream.

5.2.2.5 IEEE 802.1x

IEEE 802.1x/EAP-TLS

IEEE 802.1x Setting

Enable IEEE 802.1x

Eapol version: v1 v2

Identity:

Private key password:

CA certificate:

Status:

Client certificate:

Status:

Client private key:

Status:

IEEE 802.1x is an IEEE standard for port-based Network Access Control. It provides an authentication mechanism to device wishing to attach to a LAN or WLAN. The EAPOL protocol

support service identification and optional point to point encryption over the local LAN segment.

Please check what version of the authenticator and authentication server support. This camera supports EAP-TLS method. Please enter ID and password issued by the CA and then upload related certificates.

5.2.3 Using UPnP of Windows XP or Vista

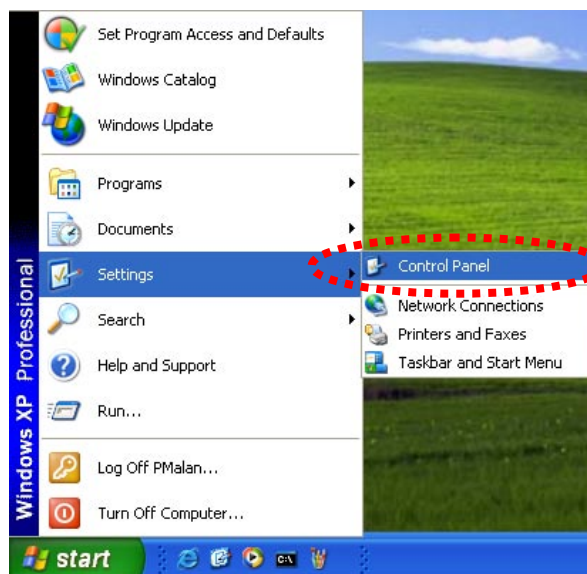
Please follow the procedure to activate UPnP:

5.2.3.1 Windows XP

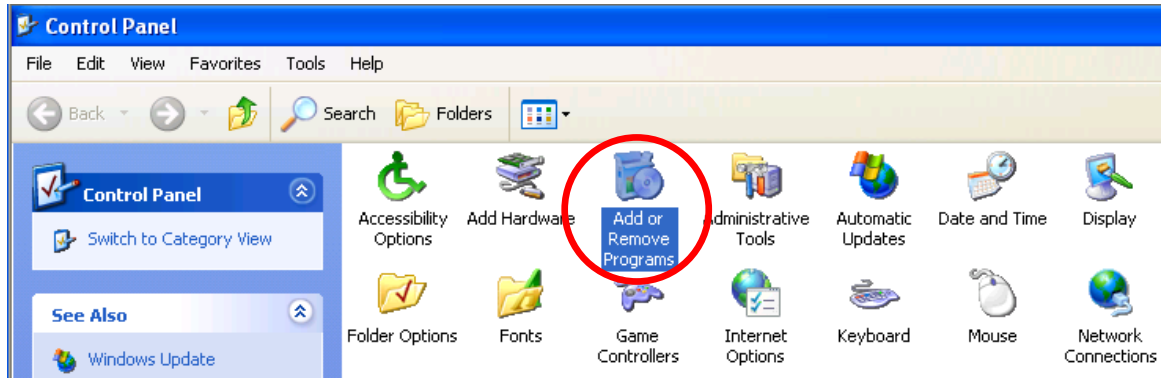
UPnP™ is short for Universal Plug and Play, which is a networking architecture that provides compatibility among networking equipment, software, and peripherals. This device is an UPnP enabled device. If the operating system, Windows XP, of your PC is UPnP enabled, the device will be very easy to configure. Use the following steps to enable UPnP settings only if your operating system of PC is running Windows XP.

 **Note** 1. Windows 2000 does not support UPnP feature.

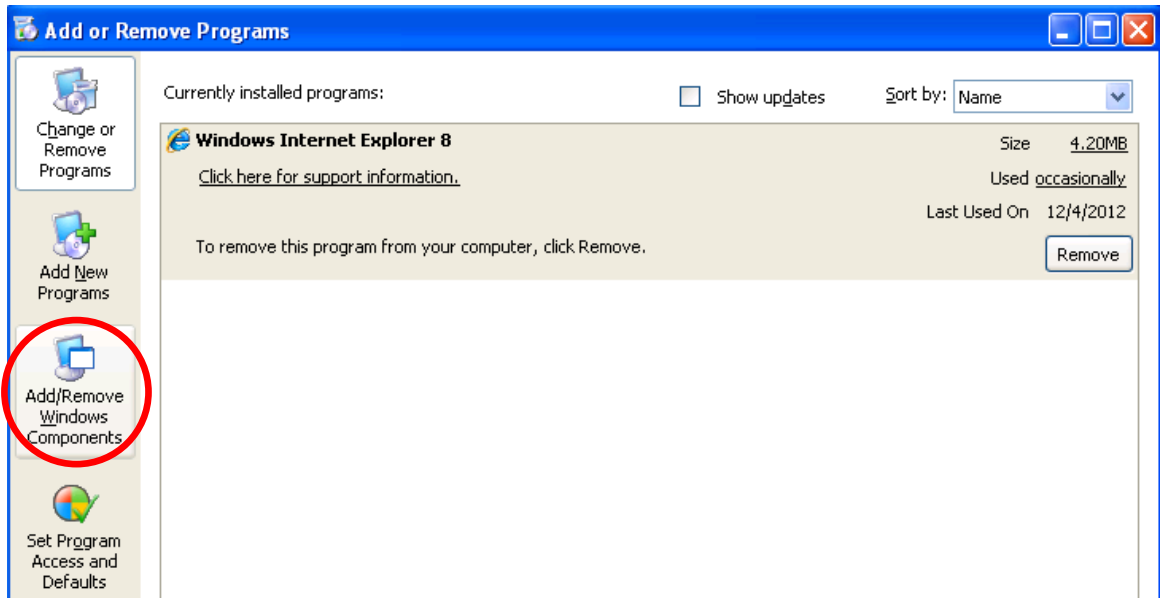
Go to **Start > Settings**, and Click Control Panel



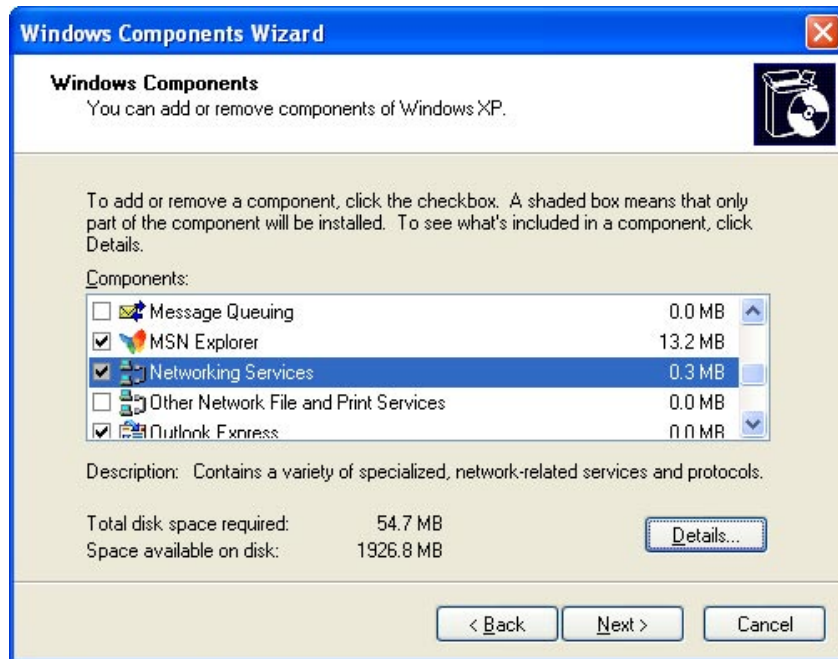
The “Control Panel” will display on the screen and double-click “Add or Remove Programs” to continue



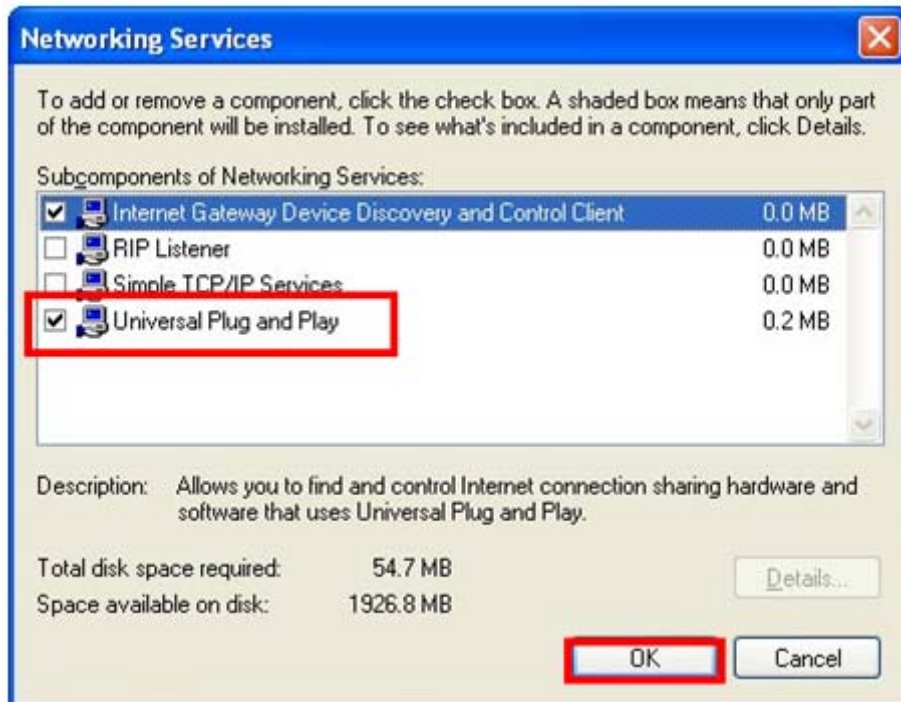
The “Add or Remove Programs” will display on the screen and click **Add/Remove Windows Components** to continue.



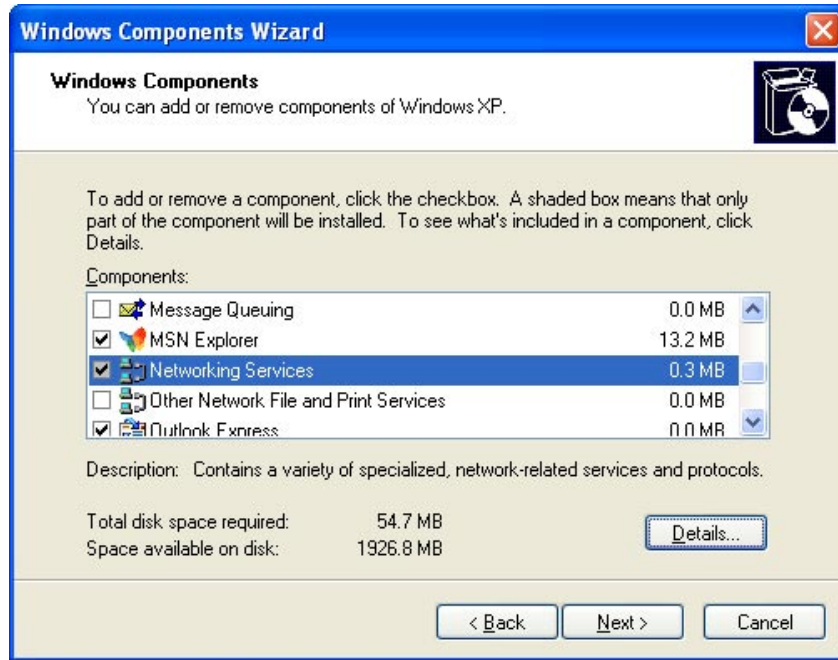
The following screen will appear. Select “**Networking Services**” and click “**Details**” to continue



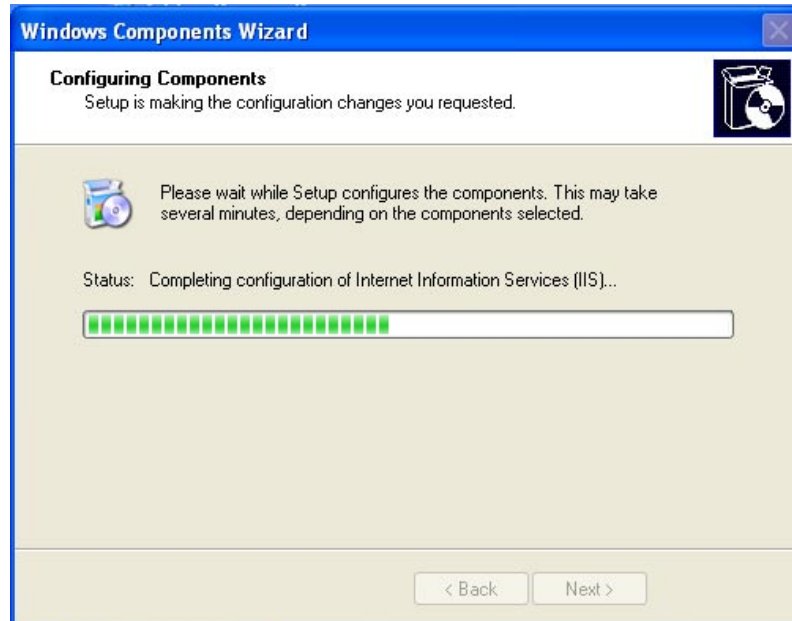
The “**Networking Services**” will display on the screen. Select “**Universal Plug and Play**” and click “**OK**” to continue.



Please click "Next" to continue.



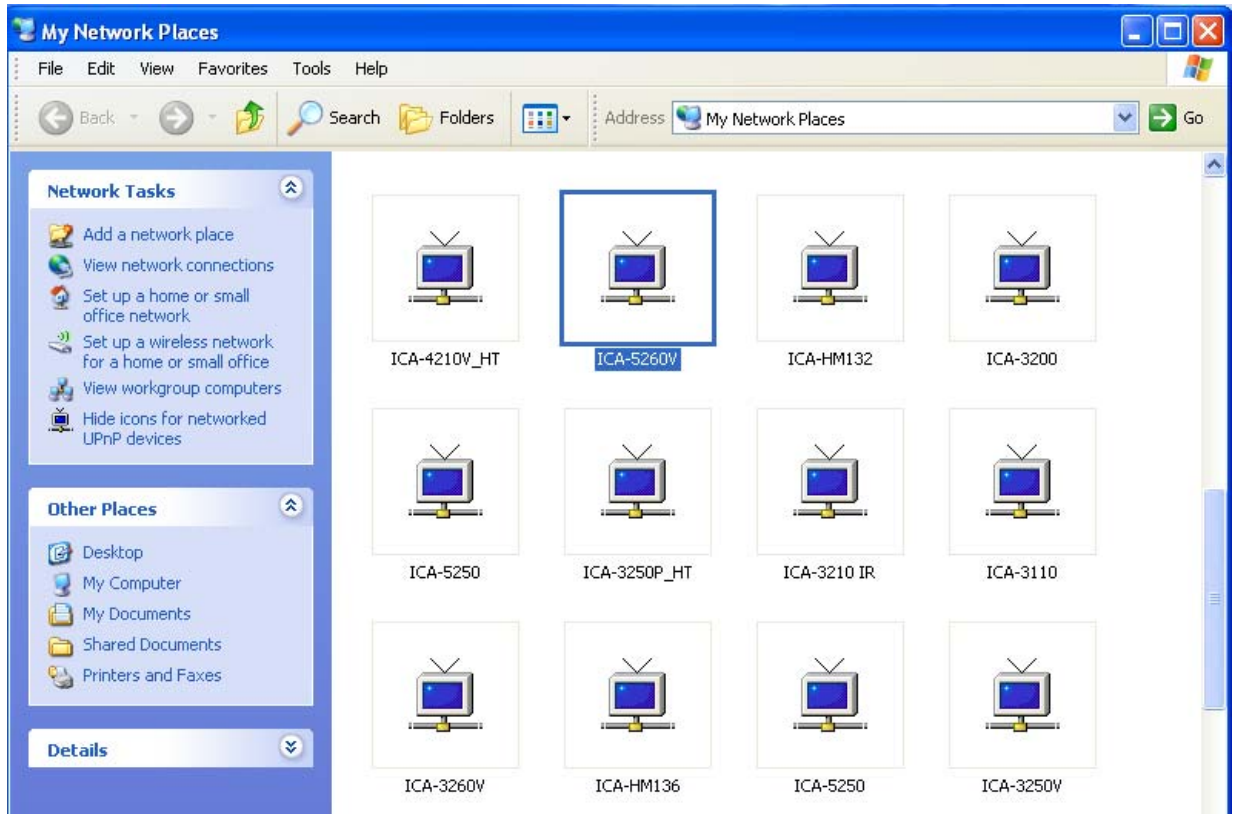
The program will start installing the UPnP automatically. You will see the pop-up screen below. Please wait while Setup configures the components.



Please click **“Finish”** to complete the UPnP installation.



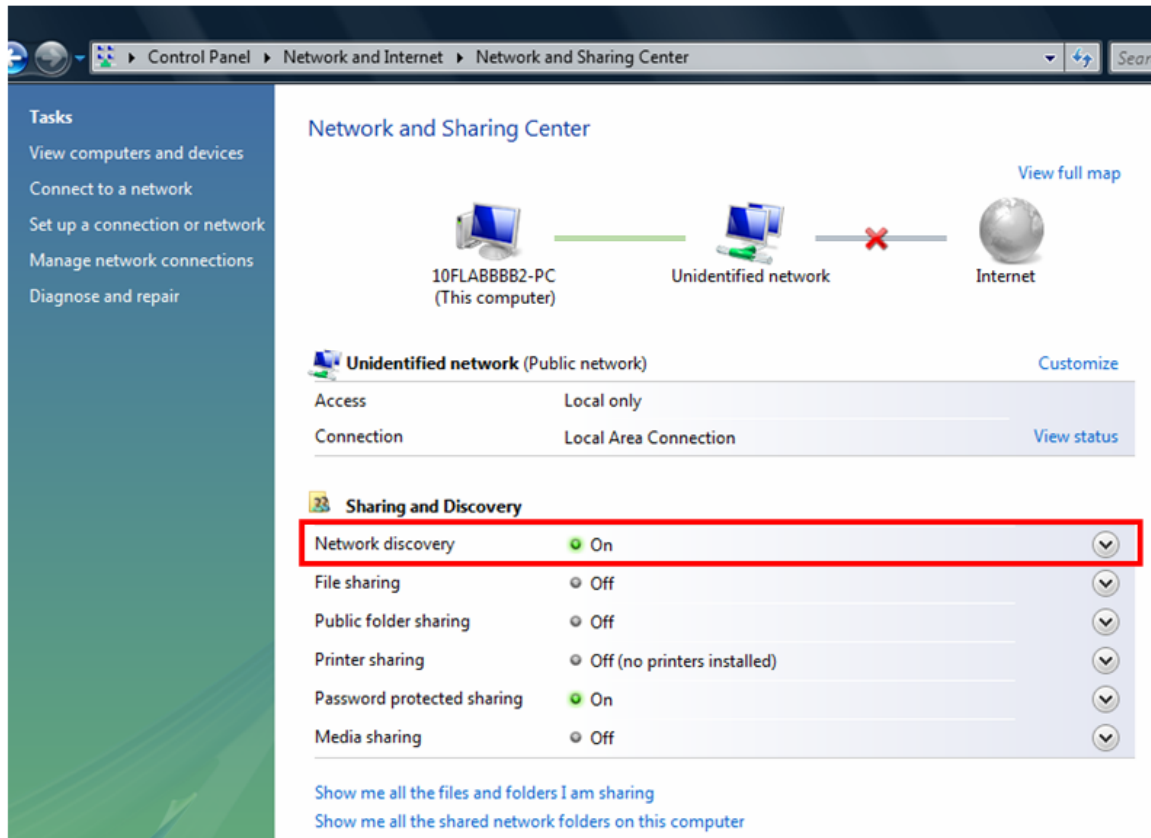
Double-click **“My Network Places”** on the desktop. The **“My Network Places”** will display on the screen and double-click the UPnP icon with Internet camera to view your device in an Internet browser.



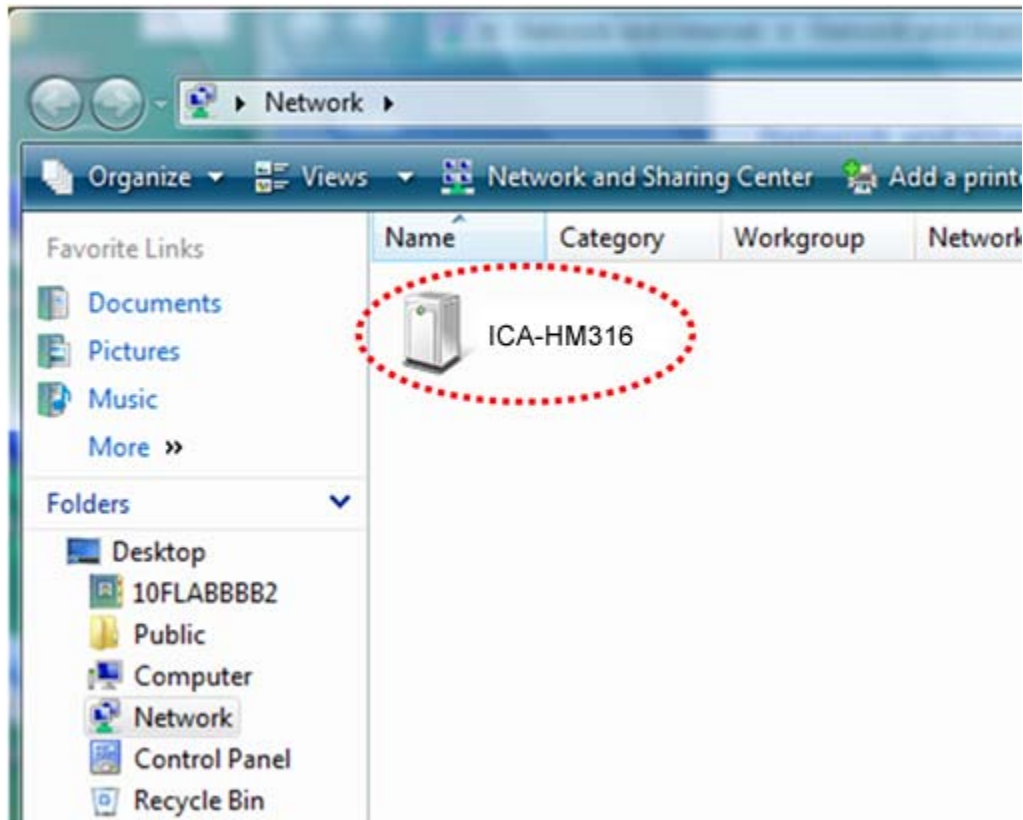
5.2.3.2 Windows Vista

UPnP™ is short for Universal Plug and Play, which is a networking architecture that provides compatibility among networking equipment, software, and peripherals. This device is an UPnP enabled device. If the operating system, Windows Vista, of your PC is UPnP enabled, the device will be very easy to configure. Use the following steps to enable UPnP settings only if your operating system of PC is running Windows Vista.

Go to **Start > Control Panel > Network and Internet > Network and Sharing Center**, and turn on **“Network Discovery”**.



Double-click “My Network Places” on the desktop. The “My Network Places” will display on the screen and double-click the UPnP icon with Internet camera to view your device in an Internet browser.



5.2.4 PPPoE

PPPoE: Stands for Point to Point Protocol over Ethernet.

A standard builds on Ethernet and Point-to-Point network protocol. It allows Internet camera to connect to Internet with xDSL or cable connection; it can dial up your ISP and get a dynamic IP address. For more PPPoE and Internet configuration, please consult your ISP.

It can directly connect to the xDSL; however, it should be set up in a LAN environment to program the PPPoE information first, and then connect to the xDSL modem. Power on again to enable the device to dial on to the ISP connection to the WAN through the xDSL modem.

The procedures are:

- (1) Select “**Enabled**” to use PPPoE.
- (2) Key-in username and password for the ADSL connection.
- (3) Send mail after dialing : When connecting to the Internet, it will send a mail to a specific mail account. For the mail setting, please refer to “**Mail and FTP**” settings.

PPPoE

PPPoE Setting

Enabled Disabled

Username:

Password:

Send mail after dialed

Enabled

Subject:

5.2.5 DDNS

DDNS: Stands for Dynamic Domain Name Server

The device supports DDNS If your device is connected to xDSL directly; you might need this feature. However, if your device is behind a NAT router, you will not need to enable this feature. Because DDNS allows the device to use an easier way to remember naming format rather than an IP address. The name of the domain is like the name of a person, and the IP address is like his phone number. On the Internet we have IP numbers for each host (computer, server, router, and so on), and we replace these IP numbers to easily remember names, which are organized into the domain name. As to xDSL environment, most of the users will use dynamic IP addresses. If users want to set up a web or an FTP server, then the Dynamic Domain Name Server is necessary. For more DDNS configuration, please consult your dealer.

Your Internet Service Provider (ISP) provides you with at least one IP address which you use to connect to the Internet. The address you get may be static, meaning it never changes, or dynamic, meaning it's likely to change periodically. Just how often it changes, depends on your ISP. A dynamic IP address complicates remote access since you may not know what your current WAN IP address is when you want to access your network over the Internet. The solution to the dynamic IP address problem comes in the form of a dynamic DNS service.

The Internet uses DNS servers to look up domain names and translates them into IP addresses. Domain names are just easy to remember aliases for IP addresses. A dynamic DNS service is unique because it provides a means of updating your IP address so that your listing will remain current when your IP address changes. There are several excellent DDNS services available on the Internet and best of all they're free to use. One such service you can use is www.DynDNS.org. You'll need to register with the service and set up the domain name of your choice to begin using it. Please refer to the home page of the service for detailed instructions or refer to Appendix E for more information. And the other is Planet easy DDNS, which is free for Planet's customers. The default is enabled with Planet easy DDNS. The hostname content contains pl plus the last six MAC address.

DDNS Setting

Enabled Disabled

Provider:

Hostname:

Schedule Update: Minutes

State

Note:

1. Schedule Update: Depends on the input time of Schedule Update, it will update DDNS's web site automatically. The time range is from 5 to 5000 minutes.
*0: It will not update.
2. dyndns.org & 3322.org: Update once per day is recommended (1440 minutes per day). If updated too frequently, it will be blocked.

DDNS Status

- (1) Updating : Information update
- (2) Idle : Stop service
- (3) DDNS registration successful, can now log by `http://<username>.ddns.camddns.com` : Register successfully.
- (4) Update Failed, the name is already registered : The user name has already been used. Please change it.
- (5) Update Failed, please check your Internet connection; network connection failed.
- (6) Update Failed, please check the account information you provide; the server, user name, and password may be wrong.

5.2.6 Mail & FTP & SAMBA

To send out the video via mail, FTP and Samba, please set up the configuration first.

Mail setting

Server Settings	
<u>Mail Setting</u>	
Login Method:	Account <input type="button" value="v"/>
Mail Server:	mail.planet.com.tw
Username:	admin
Password:	•••••
Sender's Mail:	support@planet.com.tw
Receiver's Mail:	planet.test@gmail.com
Bcc Mail:	
Mail Port:	25 (Default 25)
<input type="checkbox"/> Secure Connect:	<input checked="" type="radio"/> TLS <input type="radio"/> SSL
<input type="button" value="Test"/>	
<u>FTP Setting</u>	
<u>Samba (Network storage)</u>	
<input type="button" value="Apply"/>	

FTP setting

Server Settings	
<u>Mail Setting</u>	
<u>FTP Setting</u>	
FTP Server:	192.168.0.174
Username:	admin
Password:	•••••
Port:	21
Path:	/VOLUME2/ADMIN/test
Mode:	PORT <input type="button" value="v"/>
Create the folder:	Yes <input type="button" value="v"/> (ex:Path/20100115/121032m.avi)
<input type="button" value="Test"/>	
<u>Samba (Network storage)</u>	
<input type="button" value="Apply"/>	

Samba setting

Server Settings

[Mail Setting](#)

[FTP Setting](#)

[Samba \(Network storage\)](#)

Location:	<input type="text" value="192.168.0.124\share"/>	(ex:\\Nas_ip\folder)
Workgroup:	<input type="text" value="workgroup"/>	
Username:	<input type="text" value="admin"/>	
Password:	<input type="password" value="•••••"/>	
Create the folder:	<input type="checkbox"/> Yes <input type="checkbox"/> No	(ex:Path/20100115/121032m.avi)



1. Samba only supports one layer folder.

5.3 A/V Setting

5.3.1 Image Setting

For the security purpose, there are three areas that can be set up for privacy mask. Click “**Area**” button first and pull an area on the above image. Finally, click “**Save**” button to reserve the setting. Adjust “**Brightness**”, “**Contrast**”, “**Hue**”, and “**Saturation**” to get clear video. Moreover, the ICA-5260V also supports “**Night Mode**” and “**Video Orientation**”.

Privacy Mask

Area 1 Area 2 Area 3 Save

Image Setting

Hue: 0

Saturation: 0

AGC: 32X

Shutter Time: Outdoor

D- WDR:

Video Orientation: Flip Mirror

White Balance: AUTO


Day & Night Setting

	Day	Night (IR ON)
Brightness:	0	0
Contrast:	0	0
Sharpness:	0	0
Denoise(2D+3D):	2	2
Day Lux:	7 lux (about)	Night Lux: 3 lux (about)
Current Lux:	over 55 lux (about)	
Day & Night:	Light Sensor Mode	

Default

(1) Image adjust	Brightness, Contrast, Hue, Saturation, and Sharpness can be adjusted here.
(2) AGC	Automatic gain control. The sensitivity of camera can be adjusted with the environmental light. Enable this function and the brighter image can be got under dim light, but the level of noise may also increase.
(3) Shutter Time	Choose as the location of your camera or fixed shutter time. The shorter the shutter time is the less light the camera receives and the image becomes darker.
(4) D-WDR	Digital wide dynamic range. This function enables the camera to reduce the contrast in the view to avoid the dark zones resulting from over and under exposure.
(5) Video Orientation	Flip or mirror the image as your requirement.
(6) White Balance	Enhance red / blue color in the image.
(7) Denoise	This function is able to filter the noise and blur from the image and show a clearer view. "3D" and "2D" are two different denoising approaches. 3D denoise analyzes successive pictures to detect the noise places while 2D denoise analyzes only single picture.

(8) Day & Night	The camera can detect the light level of environment. If you choose "Light Sensor Mode", the image will be turned to black and white at night in order to keep clear. To set to light sensor mode, appoint a lux standard of switching D/N here. Current lux value is provided for reference. Under "Times Mode", the switch time of Color / Black and white is according to the given time. You can also control it by choosing "Color" or "B/W"
----------------------------	---

 **Note** When you select a number in "Shutter Time", actually the shutter time varies in a range and controlled by camera automatically. The following table shows the shutter time option and corresponding range.

Option	Shutter Time Range (sec.)
Outdoor	1/10000 ~ Selected number in "Sense-up"
Indoor	NTSC: 1/120 ~ Selected number in "Sense-up" PAL: 1/100 ~ Selected number in "Sense-up"
1/30	1/10000 ~ 1/30
1/50	1/10000 ~ 1/50
1/60	1/10000 ~ 1/60
1/100	1/10000 ~ 1/100
1/125	1/10000 ~ 1/125
1/250	1/10000 ~ 1/250
1/500	1/10000 ~ 1/500
1/1000	1/10000 ~ 1/1000
1/10000	1/10000
* Sense-up options: 1/30, 1/15, 1/10, 1/5	

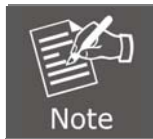
5.3.2 Video Setting

The ICA-5260V provides 2 input resolutions with D-WDR and True WDR.

D-WDR	It is effective at the complex in strong backlight and light, clear images without distortion. The recommended application is garage, where the junction of light and dark is.
True WDR	Much effective than D-WDR, true WDR is great for tunnels where license plates, etc. can be recognized.

User may select 2 streaming outputs simultaneously:

Streaming 1 Setting	Basic mode and advanced mode.
Streaming 2 Setting	Basic mode, advanced mode, and 3GPP mode



1. Max. Video Frame Rate for streaming 1 is 60fps, streaming 2 only provides 30 FPS.
2. When changed to D-WDR, streaming 2 will disable.

5.3.2.1 Video System:

Click the drop-down list to select the system type “NTSC/PAL” and TV Output (analog signal). User can select show focus bar on the left corner of the screen.

Video Setting

Input Resolution: 1080p HD 12bit 60fps (D-WDR) ▼

Video System: PAL ▼

TV Output: Enabled Disabled

Auto ▼ (Auto : Based on the Video System)

5.3.2.2 Basic Mode of Streaming 1 and Streaming 2:

Streaming 1 Setting

Basic Mode Advanced Mode

Resolution: 1920x1080 ▼

Profile: High ▼

Quality: Best ▼

Video Frame Rate: 30 FPS ▼

Video Format: H.264 ▼

RTSP Path: ex:rtsp://IP_Address/ Audio:G.711

Streaming 2 Setting

Basic Mode Advanced Mode Close

Resolution: 640x480 ▼

Profile: Baseline ▼

Quality: Medium ▼

Video Frame Rate: 15 FPS ▼

Video Format: H.264 ▼

RTSP Path: v2 ex:rtsp://IP_Address/v2 Audio:G.711

Resolution	There are 5 resolutions to choose from: 1920x1080, 1280x720, 640x480, 320x240 or 176x144
Profile	Profile is a different compression way of H.264. High profile provides better coding efficiency. Note that some devices do not support every profile. For example, iPhone4 only supports main profile.
Quality	The higher the quality is, the bigger the file size is. It might affect Internet transmitting speed if the file gets too large.

Video Frame Rate	The video refreshing rate per second. The maximum value is affected by the input resolution you choose.
Video Format	H.264 or JPEG.
RTSP Path	Set the RTSP output connecting route.

5.3.2.3 Streaming 1 and 2 Advanced Mode:

Streaming 1 Setting

Basic Mode Advanced Mode

Resolution:

Profile:

Bitrate Control Mode: CBR CVBR

Video Quantitative:

Video Bitrate:

Video Frame Rate:

GOP Size: GOP = 30

Video Format:

RTSP Path: ex:rtsp://IP_Address/ Audio:G.711

Streaming 2 Setting

Basic Mode Advanced Mode Close

Resolution:

Profile:

Bitrate Control Mode: CBR CVBR

Video Quantitative:

Video Bitrate:

Video Frame Rate:

GOP Size: GOP = 15

Video Format:

RTSP Path: ex:rtsp://IP_Address/v2 Audio:G.711

Resolution	There are 5 resolutions to choose from: 1920x1080,1280x720 , 640x480, 320x240, or 176x144
Profile	High profile provides better coding efficiency. Note that some devices do not support every profile. For example, iPhone4 only supports main profile.

Bitrate Control Mode	There are CBR (Constant Bit Rate) and CVBR (Constrained Variable Bit Rate) to use. CBR: 32Kbps~10Mbps (the higher the CBR is, the better the video quality is) CVBR: 1 (Low) ~10 (High) – Compression rate, the higher the compression rate, the lower the picture quality is and vice versa. The balance between CVBR and network bandwidth will affect picture quality. Please carefully select the CVBR rate to avoid picture breaking up or lagging.
Video Frame Rate	The video refreshing rate per second.
GOP Size	It means " Group of Pictures ". The higher the GOP is, the better the quality is.
Video Format	H.264 or JPEG.
RTSP Path	RTSP output connecting route.

5.3.2.4 3GPP Streaming mode:

3GPP Streaming Setting

Enabled Disabled (Resolution=320x240, FPS=15, Format=H.264)
 RTSP Path: ex:rtsp://IP_Address/v3 Audio:AMR

Enable or Disable	Enable or Disable 3GPP Streaming.
Resolution	320x240 in H.264 format
3GPP Path	3GPP output connecting route. If the IP address of your camera is 192.168.40.150, and you key in "v3" in the column, the 3GPP path will be rtsp://192.168.40.150/v3.

The RTSP here is separated from the RTSP setting in the "IP SETTING".
3GPP Streaming can still work even you select "disabled" in the RTSP server option of IP Setting.

5.3.3 Audio

The ICA-5260V supports 2-way audio. User can send audio from ICA-5260V's external microphone to remote PC; user can also send audio from remote PC to ICA-5260V's external speaker.

(1) Audio from IP camera's external microphone to local PC: select "**Enabled**" to start this function.

The audio compression format can be chosen from 3 options. You can also adjust the volume of 2-way audio.

Audio

IP Camera to PC

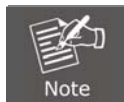
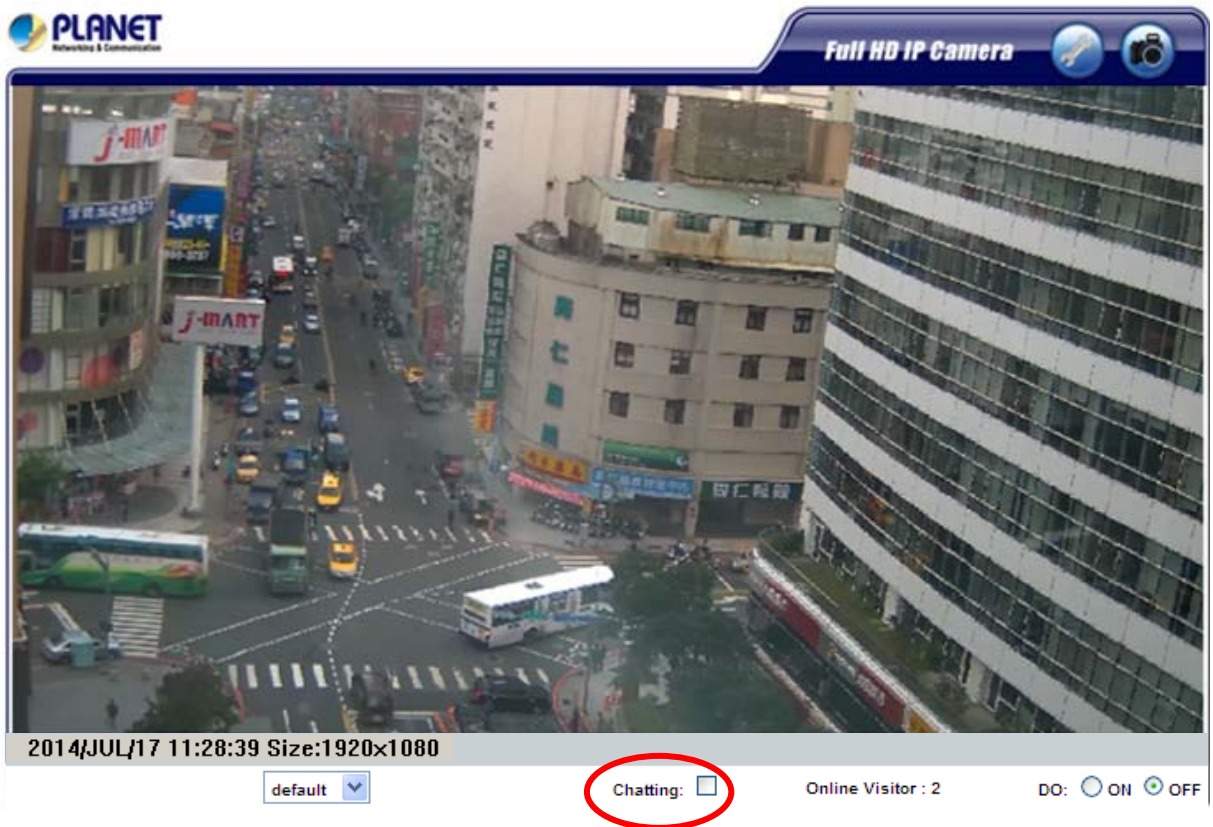
Enabled Disabled
 Audio Type: G.711 (64Kbps) ▼

Adjust Volume

Mic-In: 4 (Max) ▼
 Line-Out: 4 (Max) ▼

Apply

(2) Audio from local PC to ICA-5260V: Check “**chatting**” on the browsing page.



The audio will not be smooth when the SD card is recording.

5.4 Event List

The ICA-5260V provides multiple event settings.

5.4.1 Event Setting

Event Setting

Motion Detection

Area Setting: Area 1 Area 2 Area 3

Sensitivity:

Area 1: E-mail FTP Outt Save to SD card Samba

Area 2: E-mail FTP Outt Save to SD card Samba

Area 3: E-mail FTP Outt Save to SD card Samba

Subject:

Interval: a period of time between every two motions detected.

Based on the schedule

Record File

File Format:

Record Time Setting

Pre Alarm: Post Alarm:

Tampering Detection

Tampering: Enabled Disabled

E-mail FTP Outt Save to SD card Samba

Interval:

Face Detection

Face Detection: Enabled Disabled

E-mail FTP Outt Save to SD card Samba

Interval:

Digital Image Stabilizer

DIS: Enabled Disabled

Network Dis-connected

Dis-connected: Save to SD card

Network IP Check

IP Check: Enabled Disabled


IP Address:

Interval:

Check failed: Connection failed four times. Reboot IP Camera.

Save to SD card

(When IP check failed, first step will save to SD card, continuing other saving storage)

Motion Detection	IP camera allows 3-area motion detection. When motion is triggered, it can send the video to some specific mail addresses, transmit the video to remote ftp server and SAMBA, and trigger the relay. To set up the motion area, click "Area Setting" and use mouse to drag and draw the area. The same operation is done for areas 2 and 3.
Interval	For example, if you select "10 sec" here, once the motion is detected and action is triggered, it cannot be triggered again within 10 seconds.
Based on the schedule	When the option box is checked, only during the selected schedule time the motion detection is enabled. That is, for example, the 11th hour of Monday has not been colored in the schedule table, then no action will be triggered even the camera detects motion during 11:00~12:00 on Monday.
Record File Setting	<p>IP camera allows 3 different types of recording files to change its record size. When motion/alarm is triggered, there are 3 different types of recording modes, and they are:</p> <p>(1) AVI File (with Record File Setting)</p> <p>(2) Multi-JPEG (with Record File Setting), only with JPEG compression format.</p> <div style="border: 1px solid black; padding: 5px; width: fit-content;">  <p>Note</p> </div> <p>This item needs the video format select JPEG that allows it.</p> <p>(3) Single JPEG (Single File with Interval Setting)</p>

Record Time Setting	<p>Pre Alarm and Post Alarm setups for video start and end time when motion detects I/O, or other devices got triggered.</p> <p>Note: Pre/Post Alarm record time is based on record time setting and IP cam built-in RAM memory. Limited by IP cam built-in Ram memory and when information is too much or video quality is set too high, it will cause recording frame to drop or decrease post alarm recording time.</p>
Tampering Detection	<p>If user enables this function and when the camera view is covered, moved, shot by strong light, or out of focus, the tampering detection will be triggered, and send snapshot to mail/FTP/Samba/SD card, or trigger the external alarm.</p>
Face Detection	<p>If user enables this function, the action selected will be triggered when a face is detected.</p>
Digital Image Stabilizer	<p>The digital image stabilizer reduces shaking images. The most important situation is when there is not enough light to get a fast shutter speed.</p>
Network Disconnected	<p>To avoid video loss, the camera will start to save the video to local SD card when it detects no network connection. The video recording will continuously be saved onto SD card and divided into every 10 minutes a file until the network is reconnected successfully. The oldest file will be deleted if the capacity of SD card is full.</p>
Network IP Check	<p>Key-in the target IP address and interval. The camera checks once in a while according to the setting interval time if it can link to the target IP address. If connection fails, the camera starts to save the video to SD card</p>

5.4.2 Schedule

Schedule	<p>After completing the scheduled setup, the camera data will be recorded according to the scheduled setup.</p>
Snapshot	<p>After enabling the snapshot function, user can select the storage position of snapshot file, the interval time of snapshot and the reserved file name of snapshot.</p>
Interval	<p>The interval between two snapshots.</p>

Schedule																								
All	0	1	2	3	4	5	6	7	8	9	10	11	12	13	14	15	16	17	18	19	20	21	22	23
Mon.																								
Tue.																								
Wed.																								
Thu.																								
Fri.																								
Sat.																								
Sun.																								

With schedule setup.

Snapshot	
<input checked="" type="radio"/> Enabled <input type="radio"/> Disabled	
Snapshot: <input type="checkbox"/> E-mail <input type="checkbox"/> FTP <input checked="" type="checkbox"/> Save to SD card <input type="checkbox"/> Samba	
Interval: <input style="width: 50px;" type="text" value="10"/> Second(s) [1..50000]	
File Name: <input style="width: 200px;" type="text" value="Snapshot"/>	<input type="button" value="Apply"/>

5.4.3 I/O Setting

The ICA-5260V supports 1 input/1 output. When input is triggered, it can send the video to some specific mail addresses, transmit the video to remote ftp server, and trigger the relay and SAMBA.

I/O Setting	
Input Setting	
Input 1 Sensor:	<input type="text" value="N.O"/>
Input 1 Action:	<input type="checkbox"/> E-mail <input type="checkbox"/> FTP <input type="checkbox"/> Out1 <input type="checkbox"/> Save to SD card <input type="checkbox"/> Samba
Subject:	<input style="width: 150px;" type="text" value="GPIO In Detected!"/>
Interval:	<input style="width: 50px;" type="text" value="10 sec"/>
<input type="checkbox"/> Based on the <u>schedule</u>	
Output Setting	
Mode Setting:	<input checked="" type="radio"/> OnOff Switch <input type="radio"/> Time Switch
Interval:	<input style="width: 50px;" type="text" value="10 sec"/>

1. Please connect to propriety relay box to reduce the risk of electric shock and damage.

Alarm Input Setting	The GPIO I/O port input activates related action when I/O input is triggered.
Interval	For example, if you select "10 sec" here, once the motion is detected and action is triggered, it cannot be triggered again within 10 seconds.

Based on the Schedule	When the option box is checked, only during the selected scheduled time, the I/O is enabled. For example, the 11th hour of Monday has not been colored in the scheduled table, then no action will be triggered even the camera detects input signal during 11:00~12:00 on Monday.
GPIO Output Setting	The GPIO I/O port output activates On/Off Switch, Slide Switch or Pan/Tilt Module for use with relay box.
On Off Switch	The camera triggers the external device and lasts for 10 seconds. You can turn off the alarm manually by clicking "off" on the right bottom of the live video page.
Time Switch	The camera triggers the external device and lasts for certain of time according to the interval setting, and the user is not allowed to break off the alarm manually.

5.4.4 Log List

Sort by System Logs, Motion Detection Logs and I/O Logs. In addition, System Logs and I/O Logs won't lose data due to power failure.

Log List	
System Logs	Logs
Motion Detection Logs	Logs
I/O Logs	Logs
All Logs	Logs

System Log

[2014/07/31 10:29:09] 192.168.1.47 login by admin.
 [2014/07/31 10:17:42] Tampering Status going to NULL.
 [2014/07/31 10:17:42] Tampering going to Disabled.
 [2014/07/31 10:17:08] 192.168.1.47 login by admin.
 [2014/07/31 10:10:21] Tampering Status going to FTP .
 [2014/07/31 10:10:21] Tampering going to Enabled.
 [2014/07/31 10:10:07] FTP password changed.
 [2014/07/31 10:10:07] FTP username changed.
 [2014/07/31 10:10:07] FTP server changed.
 [2014/07/31 10:09:51] 192.168.1.47 login by admin.
 [2014/07/31 10:06:07] 192.168.1.47 login by admin.
 [2014/07/31 09:57:21] Thursday schedule is changed.
 [2014/07/31 09:57:21] Snapshot Status going to NULL.
 [2014/07/31 09:57:21] Schedule Snapshot going to Disabled.
 [2014/07/31 09:56:38] Snapshot File Name changed.
 [2014/07/31 09:56:26] Thursday schedule is changed.
 [2014/07/31 09:55:16] Snapshot Status going to Save to SD card .

5.4.5 SD Card

5.4.5.1 Playback

Please insert a micro SD card before using it. Make sure to push the micro SD card into the slot completely.

Click the date listed on this page and it shows the list of the video. The video format is AVI. Click the video to start Microsoft Media Player to play it. To delete the video, check it and then click "Del".

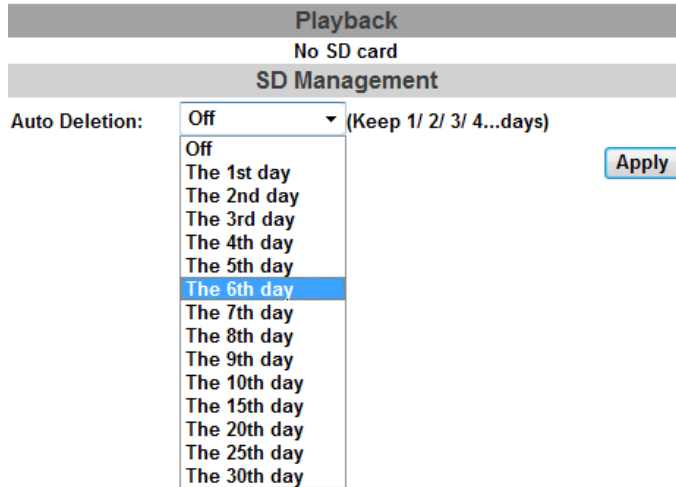
2014/07/10			Del
Time	Video	Event Type	<input type="checkbox"/>
13:25:52	132552ma4.avi	Motion Area3	<input type="checkbox"/>
13:26:17	132617ma4.avi	Motion Area3	<input type="checkbox"/>
13:26:50	132650ma4.avi	Motion Area3	<input type="checkbox"/>
13:27:39	132739ma2.avi	Motion Area2	<input type="checkbox"/>
13:28:35	132835ma1.avi	Motion Area1	<input type="checkbox"/>
13:29:37	132937ma3.avi	Motion Area1	<input type="checkbox"/>
13:36:59	133659ma1.avi	Motion Area1	<input type="checkbox"/>
13:37:11	133711ma7.avi	Motion Area1	<input type="checkbox"/>
13:37:33	133733ma1.avi	Motion Area1	<input type="checkbox"/>
13:37:56	133756ma7.avi	Motion Area1	<input type="checkbox"/>

5.4.5.2 SD Management

Choosing "The 1st day" means the recoding file will be kept for one day. For example, it is five

o'clock now. Choose "The 1st day". The files will be kept from five o'clock yesterday to five o'clock today.

The oldest file will be deleted if the micro SD card is full.

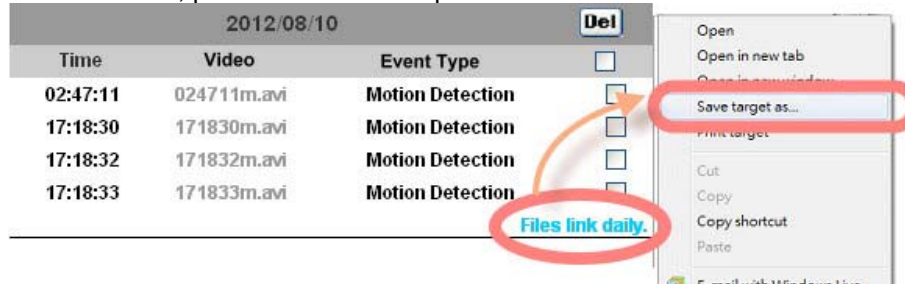


Note 1. The use of the SD card will affect the operation of the IP camera slightly, such as affecting the frame rate of the video.

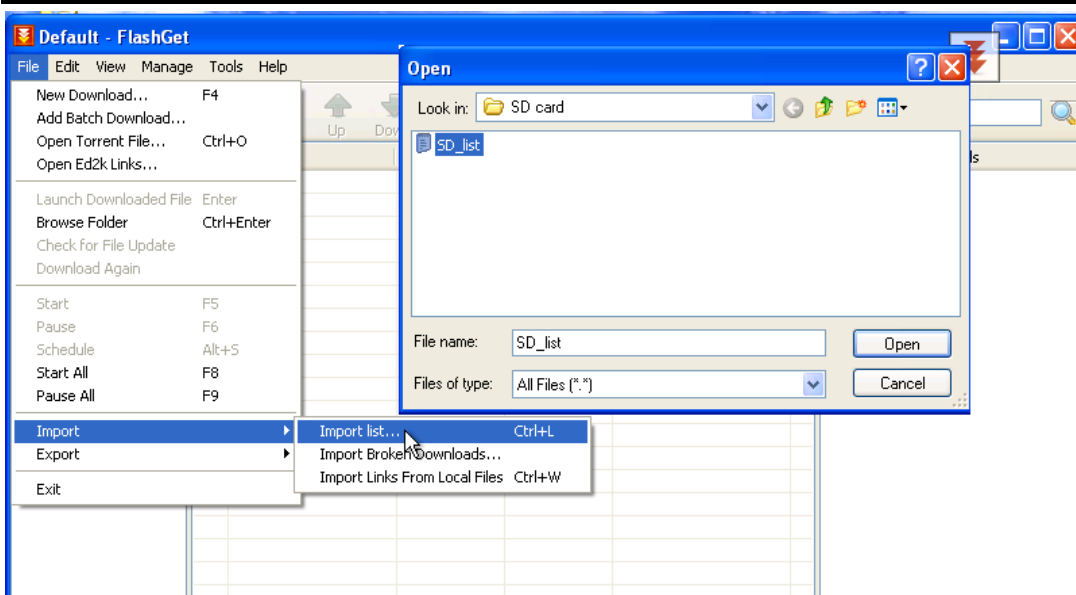
5.4.5.3 Copy to PC

You can insert the micro SD card to PC and read the files directly, or use FlashGet instead to download the files from IP camera. (In this way you do not need to pull out Micro SD card from the camera.)

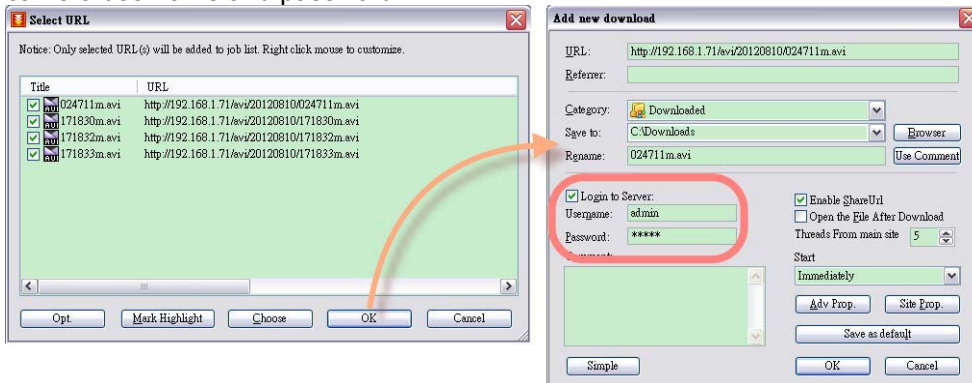
To use FlashGet for downloading the image and video data from the micro SD card, please follow the steps:



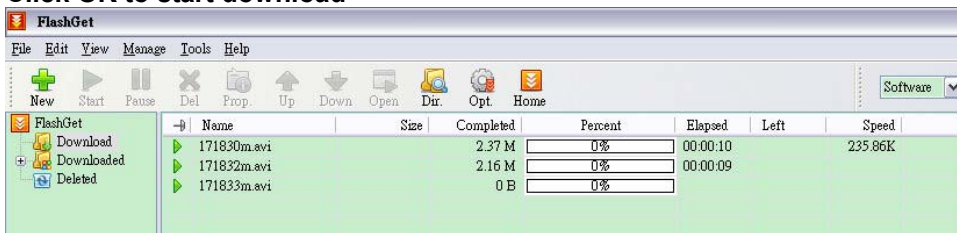
Open FlashGet, select "File" → "Import" → "Import list", and find the link list file you just saved. The file name may be called "SD_list".



FlashGet will show you the link list, and you can tick the files you want to copy to your PC. Give the directory path in the new download window, and remember to enable "Login to Server": key-in the IP camera username and password.



Click OK to start download



- FlashGet is a free software that can be downloaded from FlashGet official website. The example above is based on FlashGet ver.1.9.6.1073

Appendix A: Factory Default

To recover the default IP address and password, please follow the following steps:

Remove the power and Ethernet cable. Press and hold the button as the picture is shown below.



- Connect power to the camera again, and do not release the button during the system booting.
- It will take around 60 seconds to boot the camera.
- Release the button when the camera finishes proceeding.
- Re-login the camera using the default IP (<http://192.168.0.20>) where both user name and password are **admin**.

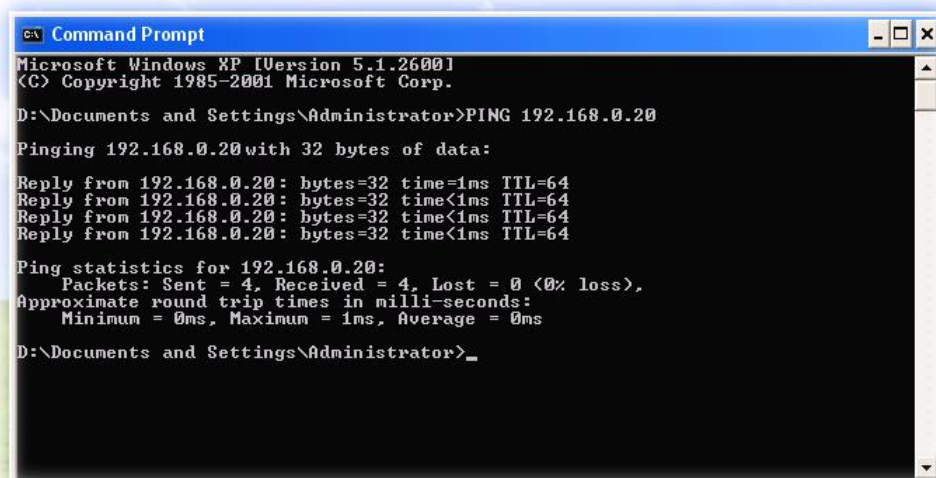
Appendix B: Ping IP Address

The Ping (stands for Packet Internet Groper) command is used to detect whether a specific IP address is accessible by sending a packet to the specific address and waiting for a reply. It's also a very useful tool to confirm whether or not Internet camera is installed or if the IP address conflicts with any other device over the network.

If you want to make sure the IP address of Internet camera, utilize the Ping command as follows:

- Start a DOS window.
- Type ping x.x.x.x, where x.x.x.x is the IP address of the Internet camera.

The replies, as illustrated below, will provide an explanation to the problem.



```
Microsoft Windows XP [Version 5.1.2600]
(C) Copyright 1985-2001 Microsoft Corp.

D:\Documents and Settings\Administrator>PING 192.168.0.20

Pinging 192.168.0.20 with 32 bytes of data:

Reply from 192.168.0.20: bytes=32 time=1ms TTL=64
Reply from 192.168.0.20: bytes=32 time<1ms TTL=64
Reply from 192.168.0.20: bytes=32 time<1ms TTL=64
Reply from 192.168.0.20: bytes=32 time<1ms TTL=64

Ping statistics for 192.168.0.20:
    Packets: Sent = 4, Received = 4, Lost = 0 (0% loss),
    Approximate round trip times in milli-seconds:
        Minimum = 0ms, Maximum = 1ms, Average = 0ms

D:\Documents and Settings\Administrator>_
```

If you want to detect any other device that conflicts with the IP address of Internet camera, you also can utilize the Ping command but you must disconnect the Internet camera from the network first.

Appendix C: 3GPP Access

To use the 3GPP function, in addition to the previous section, you might need more information or configuration to make this function works.



1. To use the 3GPP function, it is strongly recommended to install the Networked Device with a public and fixed IP address without any firewall protection.

RTSP Port:

Port 554 is the default for RTSP service. However, sometimes, some service providers change this port number for some reasons. If so, user needs to change this port accordingly.

Dialing procedure:

1. Choose a verified player (PacketVideo or Realplayer)

2. Use the following default URL to access:

rtsp://IP-Address/v3

Where *host* is the host name or IP address of the camera.

Compatible 3G mobile phone:

Please contact your dealer to get the approved list of compatible 3G phones.



1. Besides IP camera and 3G mobile phone, you will also need to make sure the ISP and company have provided the 3GPP service to you.

Appendix D: Planet DDNS Application

Configuring PLANET DDNS steps:

Step 1 Enable DDNS option through accessing web page of the ICA-5260V.

Step 2 Select on DDNS server provided, and register an account if you do not use yet.

Let's take dyndns.org as an example. Register an account at <http://planetddns.com>



The screenshot shows the PLANET DDNS website. At the top, there is a navigation bar with the PLANET logo and the text 'PLANET DDNS'. Below the navigation bar, there is a 'Sign in' section with input fields for 'ID / Email' and a password field, and a 'Sign in' button. There are also links for 'Forgotten Password' and 'Create A New Account'. Below the sign-in section, there are three product cards, each featuring a camera image, a product name, and a 'More Info' button. The first card is for 'ICA-HM227VV 3 Mega-Pixel Wireless IR PT IP Camera'. The second card is for 'ICA-HM101VV 2 Mega-Pixel Wireless Cube IP Camera' and has a 'Easy DDNS' badge. The third card is for 'ICA-HM316VV 802.11n H.264 2Mega-Pixel Outdoor IR IP Camera'. At the bottom of the page, there is a 'Support & Download' section with a 'Go!' button and a link to 'About DDNS | Term of Usage'. The footer contains the text 'PLANET Technology Corp. Copyright ©2012 All Rights Reserved.'

Appendix E: Configuring Port Forwarding Manually

The device can be used with a router. If the device wants to be accessed from the WAN, its IP address needs to be set up as a fixed IP address. The port forwarding or Virtual Server function of router also needs to be set up. This device supports UPnP traversal function. Therefore, user could use this feature to configure port forwarding of NAT router first. However, if user needs to configure port forwarding manually, please follow the steps below:

Manually installing the device with a router on your network is an easy 3–step procedure as follows:

1. Assign a local/fixed IP address to your device
2. Access the Router with Your Web browser
3. Open/Configure Virtual Server Ports of Your Router

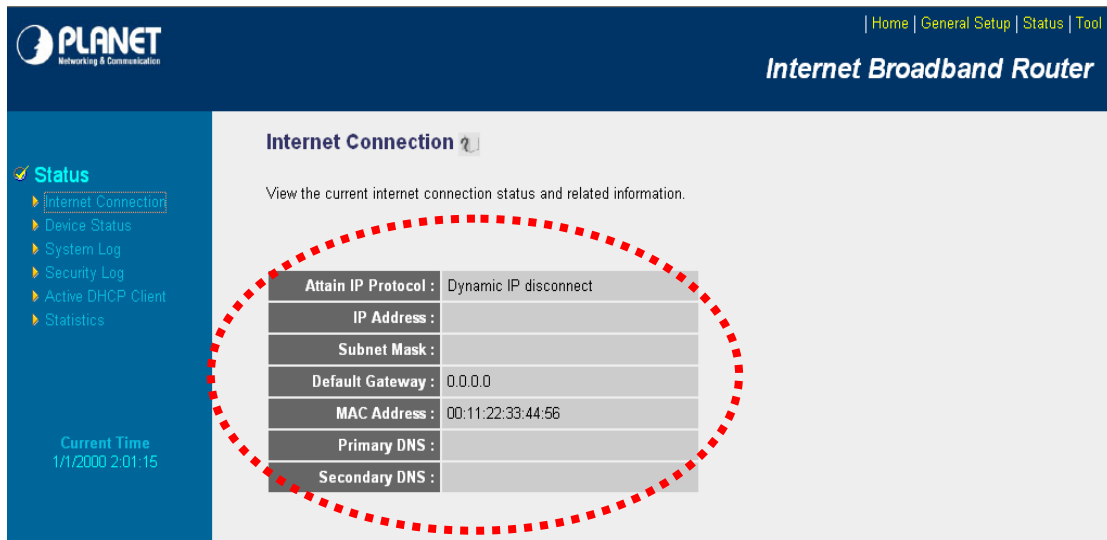
1. Assign a local/fixed IP address to your device

The device must be assigned a local and fixed IP Address that allows it to be recognized by the router. Manually set up the device with a fixed IP address, for example, *192.168.0.100*.

2. Access the Router with Your Web browser

The following steps generally apply to any router that you have on your network. PLANET WNRT-620 is used as an example to clarify the configuration process. Configure the initial settings of the router by following the steps outlined in the router's **Quick Installation Guide**.

If you have cable or DSL service, you will most likely have a dynamically assigned WAN IP address. 'Dynamic' means that your router's WAN IP address can change from time to time depending on your ISP. A dynamic WAN IP address identifies your router on the public network and allows it to access the Internet. To find out what your router's WAN IP address is, go to the **Status** screen on your router and locate the WAN information for your router. As shown on the following page the WAN IP address will be listed. This will be the address that you will need to type in your web browser to view your camera over the Internet. Be sure to uncheck the **Reset IP address at next boot** button at the top of the screen after modifying the IP address. Failure to do so will reset the IP address when you restart your computer.



PLANET Networking & Communication | Home | General Setup | Status | Tool

Internet Broadband Router

Internet Connection ?

View the current internet connection status and related information.

Attain IP Protocol :	Dynamic IP disconnect
IP Address :	
Subnet Mask :	
Default Gateway :	0.0.0.0
MAC Address :	00:11:22:33:44:56
Primary DNS :	
Secondary DNS :	

Current Time
1/1/2000 2:01:15

Your WAN IP address will be listed here.


3. Open/set Virtual Server Ports to enable remote image viewing

The firewall security features built into the router and most routers prevent users from accessing the video from the device over the Internet. The router connects to the Internet over a series of numbered ports. The ports normally used by the device are blocked from access over the Internet. Therefore, these ports need to be made accessible over the Internet. This is accomplished using the **Virtual Server** function on the router. The Virtual Server ports used by the camera must be opened through the router for remote access to your camera.

Follow these steps to configure your router's Virtual Server settings

- Click **Enabled**.
- Enter a unique name for each entry.
- Select **Both** under **Protocol Type (TCP and UDP)**
- Enter your camera's local IP address (**192.168.0.100**, for example) in the **Private IP** field.
- If you are using the default camera port settings, enter **80** into the **Public** and **Private Port** section and click **Add**.


A check mark appearing before the entry name will indicate that the ports are enabled.



Note

1. Some ISPs block access to port 80. Be sure to check with your ISP so that you can open the appropriate ports accordingly. If your ISP does not pass traffic on port 80, you will need to change the port the camera uses from 80 to something else, such as 8080. Not all routers are the same, so refer to your user manual for specific instructions on how to open ports.

| Home | General Setup | Status | Tool |
Internet Broadband Router



- System
- WAN
- LAN
- Wireless
- QoS
- NAT
 - ▶ Port Forwarding
 - ▶ **Virtual Server**
 - ▶ Special applications
 - ▶ UPnP Setting
 - ▶ ALG Settings
- Firewall

Virtual Server ?

You can configure the Broadband router as a Virtual Server so that remote users accessing services such as the Web or FTP at your local site via Public IP Addresses can be automatically redirected to local servers configured with Private IP Addresses. In other words, depending on the requested service (TCP/UDP) port number, the Broadband router redirects the external service request to the appropriate internal server (located at one of your LAN's Private IP Address).

Enable Virtual Server

Private IP	Private Port	Type	Public Port	WAN Port	Comment
<input type="text"/>	<input type="text"/>	Both	<input type="text"/>	WAN1	<input type="text"/>

Current Virtual Server Table:

Private IP	Private Port	Type	Public Port	WAN Port	Comment	Select
192.168.0.100	80	TCP+UDP	80	WAN1	ICA-HM230	<input type="checkbox"/>

Enter valid ports in the **Virtual Server** section of your router. Please make sure to check the box on this line to enable settings. Then the device can be accessed from WAN by the router's WAN IP address.

By now, you have finished your entire PC configuration for this device.

Appendix F: Troubleshooting & Frequently Asked Questions

Features	
The video and audio codec is adopted in the device.	<p>The device utilizes H.264 and M-JPEG compressions to provide high-quality images where H.264 is standards for video compression and M-JPEG is a standard for image compression.</p> <p>The audio codec is defined as AMR for 3GPP and G.711 for RTSP streaming.</p>
The maximum number of users that accesses the device simultaneously.	The maximum number of users is limited to 10. However, it also depends on the total bandwidth accessed to this device from clients.
Installing this device	
The network cabling is required for the device.	The device uses Category 5 UTP cable allowing 10 and/or 100 Base-T networking.
The device will be installed and work if a firewall exists on the network.	If a firewall exists on the network, port 80 is open for ordinary data communication. The HTTP port and RTSP port need to be opened on the firewall or NAT router.
The username and password for the first time or after factory default reset	<p>Username = admin and Password = admin.</p> <p>Note that it's all case sensitivity.</p>
Forgot the username and password	<p>Follow the steps below:</p> <ol style="list-style-type: none"> (1) Remove power, and press and hold the button in the back of IP camera. (2) Power on the camera. Don't release the button during the system booting. (3) It will take around 60 seconds to boot the camera. (4) Release the button when camera finishes proceeding. (5) Re-login the camera using the default IP (http://192.168.0.20) where both username and password are admin.
Forgot the IP address of the device.	Check IP address of device by using the PLANET IP Installer program or by UPnP discovery or set the device to default by reset button.
PLANET IP Installer program cannot find the device.	<ul style="list-style-type: none"> ● Re-power the device if cannot find the unit within 1 minute. ● Do not connect device over a router. PLANET IP Installer program cannot detect device over a router. ● If IP address is not assigned to the PC that runs PLANET IP Installer program, then PLANET IP Installer program cannot find device. Make sure that IP address is assigned to the PC properly. ● Antivirus software on the PC might interfere with the setup program. Disable the firewall of the antivirus software during setting up this device.

	<ul style="list-style-type: none"> • Check the firewall setting of your PC or Notebook.
Internet Explorer does not seem to work well with the device	Make sure that your Internet Explorer is version 8.0 or later. If you are experiencing problems, try upgrading to the latest version of Microsoft's Internet Explorer from the Microsoft webpage.
PLANET IP Installer program fails to save the network parameters.	Network may have trouble. Confirm the parameters and connections of the device.
UPnP NAT Traversal	
Cannot work with NAT router	Maybe NAT router does not support UPnP function. Please check user's manual of router and turn on UPnP function.
Some IP cameras are working but others failed	Maybe too many IP cameras have been installed on the LAN, and then NAT router is out of resource to support more cameras. You could turn off and on NAT router to clear out of date information inside router.
Accessing this device	
Cannot access the login page and other web pages of the Network Camera from Internet Explorer	<ul style="list-style-type: none"> • Maybe the IP address of the Network Camera is already being used by another device or computer. To confirm this possible problem, disconnect the Network Camera from the network first, and then run the Ping utility to check it out. • Maybe it's the network cable. Try correcting your network cable and configuration. Test the network interface by connecting a local computer to the Network Camera via a crossover cable. • Make sure the Internet connection and setting are ok. • Make sure the IP address of Internet Explorer you entered is correct. If the Network Camera has had a dynamic address, it may have changed since you last checked it. • Network congestion may prevent the web page from appearing quickly. Wait for a while. <p>The IP address and Subnet Mask of the PC and Network Camera must be in the same class of the private IP address on the LAN.</p> <ul style="list-style-type: none"> • Make sure the http port used by the Network Camera, default=80, is forwarded to the Network Camera's private IP address. • The port number assigned in your Network Camera might not be available via Internet. Check your ISP for available port. • The proxy server may prevent you from connecting directly to the Network Camera. You are advised not to use the proxy server. • Confirm that Default Gateway address is correct. • The router needs Port Forwarding feature. Refer to your router's manual for details. • Packet Filtering of the router may prohibit access from an external network. Refer to your router's manual for details. • Access the Network Camera from the Internet with the global IP address of the router and port number of Network Camera. • Some routers reject the global IP address to access the Network

	<p>Camera on the same LAN. Access with the private IP address and correct port number of Network Camera.</p> <ul style="list-style-type: none"> • When you use DDNS, you need to set Default Gateway and DNS server address. • If it's not working after following the above procedure, reset Network Camera to default setting and install it again.
<p>Image or video does not appear on the main page.</p>	<ul style="list-style-type: none"> • The first time the PC connects to Network Camera, a pop-up Security Warning window will appear to download ActiveX Controls. When using Windows XP, or Vista, log on with an appropriate account that is authorized to install applications. • Network congestion may prevent the Image screen from appearing quickly. You may choose lower resolution to reduce the required bandwidth.
<p>How to check whether the device's ActiveX is installed on your computer</p>	<p>Go to C:\Windows\Downloaded Program Files and check to see if there is an entry for the file "Web Watch2 Control". The status column should show "Installed". If the file is not listed, make sure your Security Settings in Internet Explorer are configured properly and then try reloading the device's home page. Most likely, the ActiveX control did not download and install correctly. Check your Internet Explorer security settings and then close and restart Internet Explorer. Try to browse and log in again.</p>
<p>Internet Explorer displays the following message: "Your current security settings prohibit downloading of ActiveX controls".</p>	<p>Set up the IE security settings or configure the individual settings to allow downloading and scripting of ActiveX controls.</p>
<p>The device works locally but not externally.</p>	<ul style="list-style-type: none"> • Might be caused from the firewall protection. Check the Internet firewall with your system or network administrator. The firewall may need to have some settings changed in order for the device to be accessible outside your LAN. • Make sure that the device isn't conflicting with any other web server running on your LAN. • Check the configuration of the router settings to allow the device to be accessed outside your local LAN. • Check the bandwidth of Internet connection. If the Internet bandwidth is lower than target bit rate, the video streaming will not work correctly.
<p>The unreadable characters are displayed.</p>	<p>Use the operating system of the selected language. Set the Encoding or the Character Set of the selected language on the Internet Explorer.</p>
<p>Frame rate is slower than the setting.</p>	<ul style="list-style-type: none"> • The traffic of the network and the object of the image affect the frame rate. The network congestion causes frame rate slower than the setting. • Check the bandwidth of Internet connection. If the Internet bandwidth is lower than target bit rate, the video streaming will not work correctly. • Ethernet switching hub can smooth the frame rate.

<p>Blank screen or very slow video when audio is enabled.</p>	<ul style="list-style-type: none"> Your connection to the device does not have enough bandwidth to support a higher frame rate for the streamed image size. Try reducing the video streaming size to 160x120 or 320x240 and/or disabling audio. Audio will consume 32 kbps. Disable audio to improve video. Your Internet connection may not have enough bandwidth to support streaming audio from the device.
<p>Image Transfer on e-mail or FTP does not work.</p>	<ul style="list-style-type: none"> Default Gateway and DNS server address should be set up correctly. If FTP does not work properly, ask your ISP or network administrator about the transferring mode of FTP server.
<p>Video quality of the device</p>	
<p>The focus on the Camera is bad.</p>	<p>The lens is dirty or dust is attached. Fingerprints, dust, stain, etc. on the lens can degrade the image quality.</p>
<p>The color of the image is poor or strange.</p>	<ul style="list-style-type: none"> Adjust White Balance. To ensure the images you are viewing are the best they can be, set the Display property setting (color quality) to 16bit at least and 24 bit or higher if possible within your computer. The configuration on the device image display is incorrect. You need to adjust the image related parameters such as brightness, contrast, hue and sharpness properly.
<p>Image flickers.</p>	<ul style="list-style-type: none"> If the object is dark, the image will flicker. Make the condition around the Camera brighter.

Appendix G: Micro SD Card Compatibility

The following is the Micro SD Card recommended:

Transcend	SDHC	class4	16GB
	SDHC	class4	32GB
	SD	class4	16GB
	SD	class4	32GB
	SDHC	class6	4GB
	SDHC	class6	8GB
	SDHC	class6	16GB
	SD	class6	4GB
	SD	class6	8GB
	SD	class6	16GB
	SDHC	class10	4GB
	SDHC	class10	8GB
	SDHC	class10	
	SanDisk	SDHC	class4
SDHC		class4	8GB
SDHC		class4	16GB
SDHC		class4	32GB