

# **Art Master III**

## **User's Manual**

**Hanwang Technology Co., Ltd.**

---

Copyright © Hanwang Technology Co., Ltd, 2010

All rights reserved. No part of this manual may be reproduced except for your express personal use. Hanwang Technology Co., Ltd reserves the rights to revise this publication without obligation to provide notification of such changes. Hanwang Technology Co., Ltd does its best to provide current and accurate information in this manual. However, Hanwang Technology Co., Ltd reserves the right to change any specifications and product configurations at its discretion, without prior notice and without obligation to include such changes in this manual.

Art Master and Hanvon are registered trademarks of Hanwang Technology Co., Ltd.

Microsoft, Windows, and Vista are either registered trademarks or trademarks of Microsoft Corporation in the United States and/or other countries. Apple, the Apple logo, and Macintosh are registered trademarks of Apple Computer, Inc., registered in the U.S. and other countries. Any additional company and product names mentioned in this documentation may be trademarked and /or registered as trademarks. Mention of third-party products is for information purposes only and constitutes neither an endorsement nor a recommendation.

Hanwang Technology Co., Ltd assumes no responsibility with regard to the performance or use of these products.

---

# Contents

<b>Chapter 1 Graphics Tablet Introduction</b> .....	<b>1</b>
1.1 General Introduction.....	1
1.2 Features .....	1
1.3 Quick-Start Tutorial.....	2
<b>Chapter 2 Instruction for Windows Systems</b> .....	<b>8</b>
2.1 System Requirements .....	8
2.2 Installation .....	8
2.3 Uninstalling.....	9
2.4 Configuration .....	10
<b>Chapter 3 Instruction for Mac Systems</b> .....	<b>25</b>
3.1 System Requirements .....	25
3.2 Installation .....	25
3.3 Uninstalling.....	29
3.4 Configuration .....	30
<b>Chapter 4 Bundled Software</b> .....	<b>37</b>
4.1 Hanvon Shell.....	37

---

4.2 PenWrite.....	43
4.3 PenSign.....	50
4.4 PenMail .....	51
4.5 PenMark .....	54
<b>Chapter 5 Maintenance.....</b>	<b>60</b>
5.1 Pen Holder .....	60
5.2 Exchange Pen Nib.....	61
5.3 Cautions .....	61
<b>Appendix.....</b>	<b>62</b>
Warranty .....	62

This User's Manual provides quick access to information about Hanvon® Drawing Tablet or Hanvon® Graphics Tablet.

- ◆ This User's Manual does not contain detailed information of any software from third party.
- ◆ Due to our continuous updates on the product, all figures in this manual are only for reference, the actual item is the standard.
- ◆ For latest updated user manual, please visit and download from <http://www.hanvon.com>.

# Chapter 1 Graphics Tablet

## Introduction

### 1.1 General Introduction

The Hanvon Graphics Tablet allows you to create graphics on a computer using a cordless and battery-free digital pen. It is very easy to use. You don't need to be an experienced graphic artist to use it. This USB graphics tablet supports a variety of professional painting and photo editing software including Painter, Photoshop, Ulead PhotoImpact, Flash, Dabbler, Maya, PaintShop and more.

### 1.2 Features

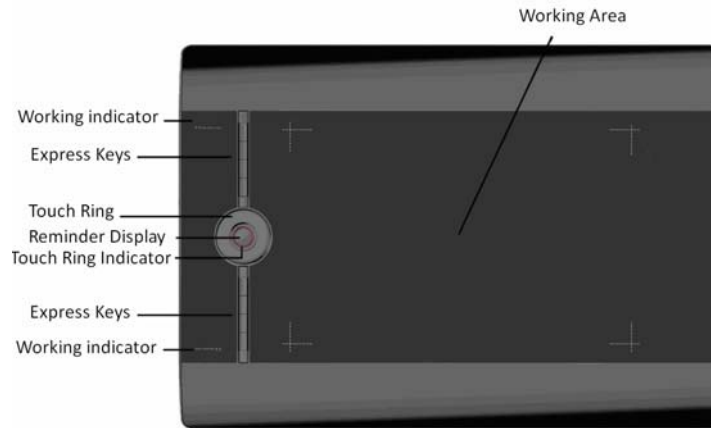
- Express Keys and Touch Ring
- Uses standard USB without the need for an external power adapter
- Cordless and Battery-free Digital Pen
- Pressure Sensitive Technology

# INTRODUCTION

---

- Eraser and Programmable Switches on Stylus
- Widescreen and Multiple Monitors Supported
- Vista/Windows 7 Supported, Windows & Mac compatible
- Software Supported: Painter / Photoshop / Ulead PhotoImpact / Flash / CorelDraw / Dabbler / Maya and a variety of graphic processing software

## 1.3 Quick-Start Tutorial



# INTRODUCTION

---



## **Holding the pen**

Hold the pen as usual.

- The pen will take effect when it comes within 10mm above the tablet.
- While using the pen, be sure that your thumb or index finger can easily control the programmable buttons on the pen, which act as the “right-click” and “double-click” key of a mouse individually.

# INTRODUCTION

---



## **Positioning**

Moving the pen in the active area of the tablet will control the cursor's position on the computer screen.



The pen and tablet use the Absolute Coordination method. This means the active area of the tablet represents the entire computer screen. Moving the pen on the tablet creates a corresponding movement of the cursor on the screen.



# INTRODUCTION

---

## **Single Click**

One slight touch of the pen on the tablet has the same effect as a single left-click of the mouse.



## **Double Click**

Two immediate clicks on the tablet have the same effect as a double left-click of the mouse.



# INTRODUCTION

---

## **Double Click Technique**

When the cursor is positioned, press the tablet twice immediately with the pen tip, making sure that you do not move the pen tip. The response for the double click can be slow for beginners. You can solve this problem by adjusting the double click speed from the normal setting of the tablet.

## **Dragging**

Select a target by pressing the pen down on it, and do not release the pen till you have moved the target to the new position you want.



## **Pressure Sensitive Painting**

With 2048 levels of pressure sensitivity, the drawing pen can sense tiny pressure from light hand. Let users work easily and comfortably like the feel of traditional painting, smooth

## INTRODUCTION

---

drawing and brush stroke effects by pressing harder or softer with the digital Pen.

The software that supports pressure sensitivity includes Adobe Photoshop, Painter, Flash, Ulead PhotoImpact, Art Dabbler etc.

### **Express keys and Touch Ring**

Express Keys are programmable as function keys, keyboard shortcuts, mouse clicks, launching applications, and pop-up menus.

User may zoom, scroll, change brush size, rotate canvas in applications by using finger sensitive Touch Ring.

### **Ambidextrous and Switchable Design**

Ambidextrous and switchable design is adorable design for both of left handed and right handed user. Users may find comfortable position by simply switch the tablet to right or left.

### **Eraser and Programmable Switches on Stylus**

Featuring Hanvon's Pressure Sensitive Technology, the stylus senses tiny pressure from Pen tip. Pressure Sensitive Eraser on stylus brings convenient tool to modify art work. Two programmable switches on pen body enable user to customize the function of switching according to user's habits.

# **INSTRUCTION FOR WINDOWS SYSTEMS**

## **Chapter 2 Instruction for Windows Systems**

### **2.1 System Requirements**

CPU	Pentium III 1GHz or later
RAM	256MB
Hard-disk	200MB
OS	WINDOWS 2000/XP/Vista/7
Port	USB1.1 or 2.0

### **2.2 Installation**

Connect the drawing tablet's USB cable to the computer's USB port.

#### **Step 1**

Insert the driver CD into the CD-ROM drive. The Installation Menu should pop-up automatically. If the menu does not

## **INSTRUCTION FOR WINDOWS SYSTEMS**

---

appear, double-click the *My Computer* icon on the Desktop, find the *AutoRun.exe* file under the CD-ROM's root directory, and double-click it.

### **Step 2**

Click on *Install Driver for Graphic Tablet* button to install the driver and click on *Install Hanvon Soft* to install the bundled software.

### **Step 3**

After installing the driver and the bundled software, read this manual for detailed information on using and customizing your graphics tablet.

**Note:** If the tablet cannot be used after driver installation, please restart your computer.

## **2.3 Uninstalling**

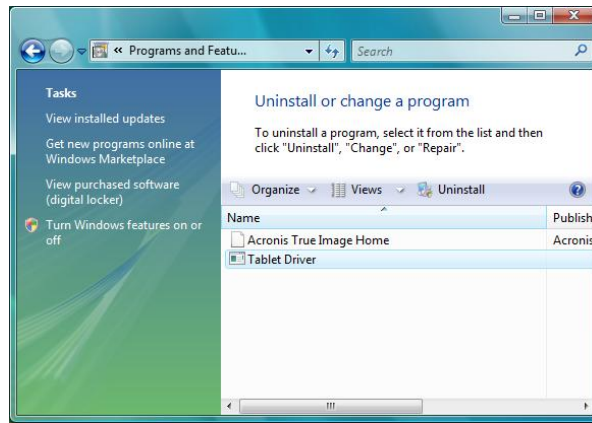
### **Step 1**

Click the Windows *Start* button and then select *Control panel*.

### **Step 2**

Double click *Add/remove program* in the control panel window and find *Tablet Driver*.

# INSTRUCTION FOR WINDOWS SYSTEMS



### **Step 3**

Click *Uninstall* and follow the prompts to remove the tablet driver.

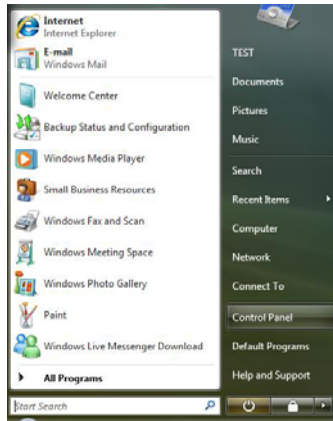
## **2.4 Configuration**

Hanvon tablet driver provides a configuration window to set pen pressure, working area, dual-monitors, double-click speed, express touch keys, etc.

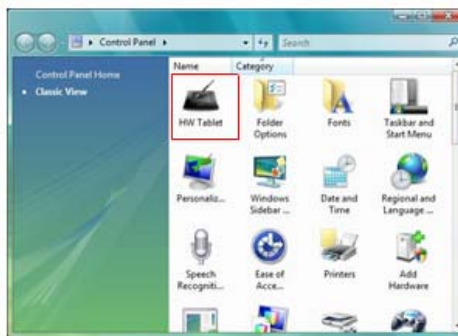
### **Before Configuration**

- Connect the graphics tablet to the USB port on your computer.
- Go to *control panel*.

# INSTRUCTION FOR WINDOWS SYSTEMS

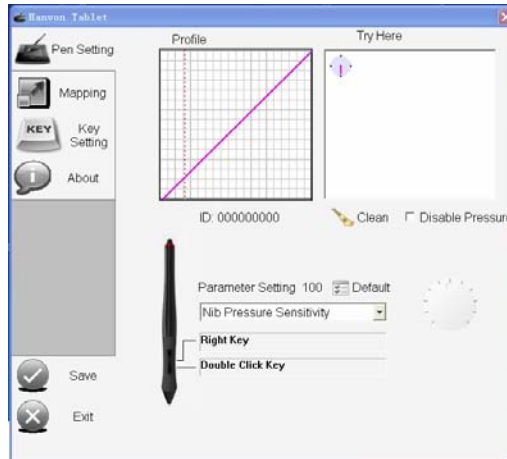


- Double-click the *HW Tablet* icon to open the configuration interface.



# INSTRUCTION FOR WINDOWS SYSTEMS

## 2.4.1 General Configuration



### **a. Adjusting Pressure Sensitivity**

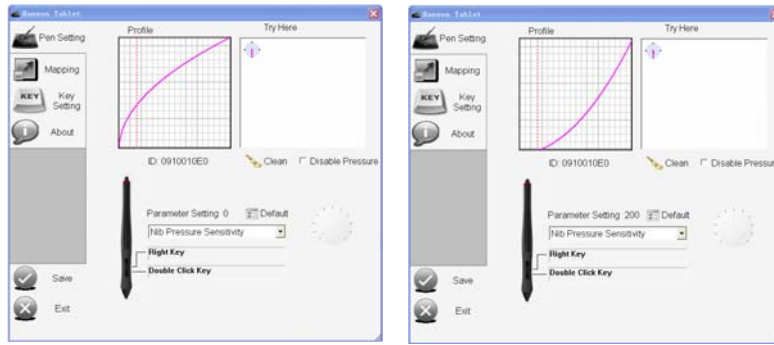
Pen pressure sensitivity can be adjusted by dragging the slider between soft and hard. To create broad strokes, use a soft tip. To draw thin lines, use a hard tip. The factory setting can be restored by clicking the *Default* button. Adjustments can be saved by clicking the *Save* button or can be canceled by clicking the *Cancel* button.

### **b. Pressure Curve Graph**

Pen pressure sensitivity changes are displayed on the Pressure Curve Graph. The images below show the graphs for light and heavy pen pressure respectively.



# INSTRUCTION FOR WINDOWS SYSTEMS

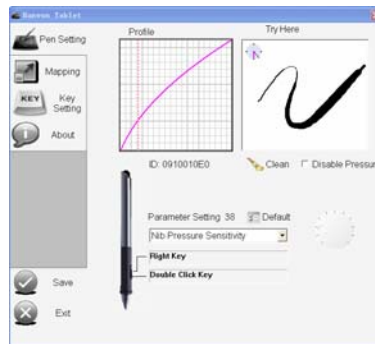


## **c. Pressure Testing Area**

The right area is the pressure test area which is used to test the pen tip feel. The round circle at the upper left corner represents the tilt angle between the drawing pen and the tablet surface. All the writing and drawing in the test area can be cleared by clicking the *Clean* button.

**Note:** Only Windows 2000/XP/Vista/7 support tilt angle.

# INSTRUCTION FOR WINDOWS SYSTEMS



## **d. Parameter settings**

Parameter settings include Nib Pressure Sensitivity, Tilt Sensitivity, and Nib Click Sensitivity. The users can adjust the value to find comfortable operation. Click *Default* to restore the factory settings, click *Save* to save the current setting, click *Exit* to quit.

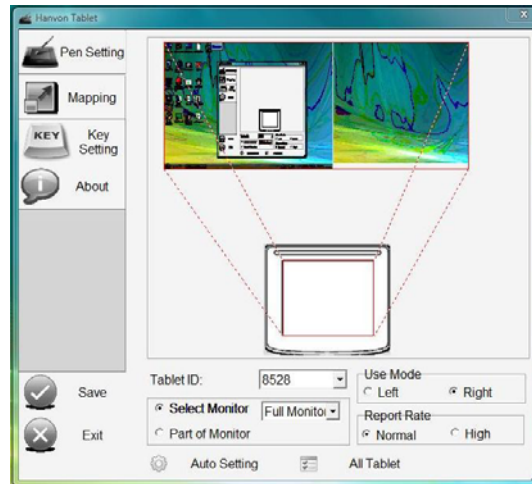
## **e. Soft Key Settings**

There are two buttons on the Pen: the upper one is “Right Click” by default , the lower one is “double click”. Users can also set buttons to other functions from options in figures below.

# INSTRUCTION FOR WINDOWS SYSTEMS

- Left Key
- Right Key
- Middle Key
- Double Click Key
- Scroll Up
- Scroll Down
- Keyboard
- Application
- Disable

## 2.4.2 Mapping



### **a. Single Monitor Mode**

The entire active area of the tablet maps to the entire monitor by default. If your computer has more than one monitor, see

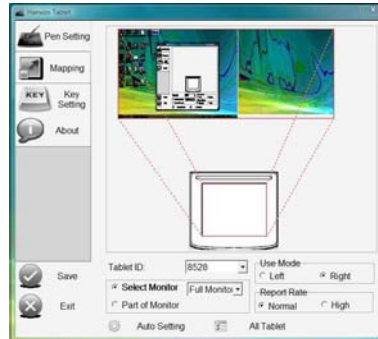
# INSTRUCTION FOR WINDOWS SYSTEMS

*Multi-Monitor Mode.*

## **b. Multi-Monitor Mode**

### a) Full Screen

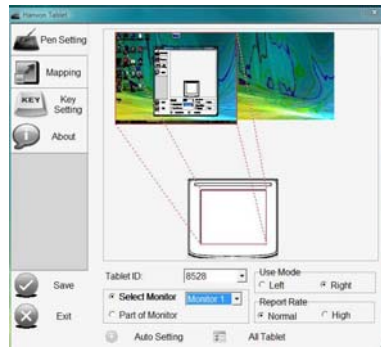
Choose *Select Monitor* and then select *Full Monitor* from the drop-down menu. You will see the screen area corresponding to the active area of the tablet is mapped.



### b) Screen #1

Choose *Select Monitor* and select *Monitor 1* from the drop-down menu to set the area, then only *Monitor 1* can be controlled by the tablet.

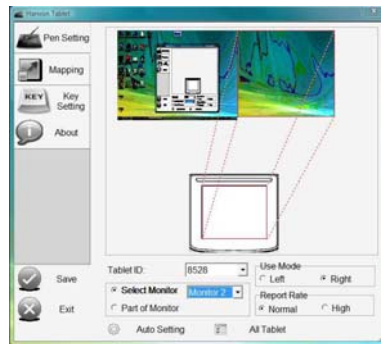
# INSTRUCTION FOR WINDOWS SYSTEMS



1 2

## c) Screen #2

Choose *Select Monitor* and select *Monitor 2* from the drop-down menu to set the area, then only *Monitor 2* can be controlled by the tablet.

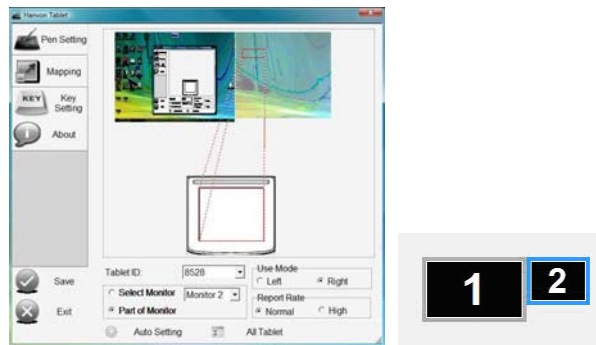


1 2

## **INSTRUCTION FOR WINDOWS SYSTEMS**

### **c. Portion of Screen**

Choose *Part of Monitor*, and then click the upper left corner and lower right corner for the expected area of screen which will be mapped to the full tablet.



### **d. Auto Setting**

The tablet active area can be automatically set by clicking the *Auto Setting* button to be 1:1 aspect ratio between tablet working area and the display.

Note: Auto Setting cannot be set in the mode of Part of Monitor.

### **e. Mapping All Tablet**

Click the *All Tablet* button; driver will automatically adjust the

# INSTRUCTION FOR WINDOWS SYSTEMS

active area of the tablet mapped to the whole screen.

## 2.4.3 Express Keys Setting



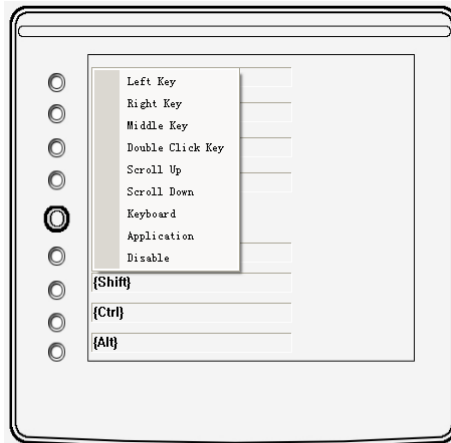
There are many Express Keys on the tablet. Please see the default function in the bellow picture. The users also can define them to other special functions. The Touch Ring on the tablet is for quick scrolling, zooming, controlling brush size, and enable rotated.

### **a. Define the function of express keys**

There are eight express keys on the tablet. When you

## INSTRUCTION FOR WINDOWS SYSTEMS

configure the key function, there are two ways to define it. One is to choose the options from the drop-down menu for each key, and then click *Save* to save the setting.



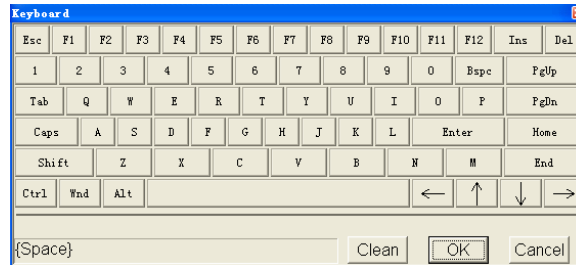
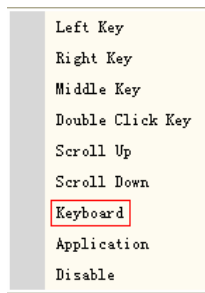
Another way is defined by pressing the keyboard of your computer. After that, click *Save* to save the setting or click *Cancel* to discard the changes.

### Example 1

If you want to assign CTRL+A to one of the express keys, select the key you want to set, then press CTRL and A simultaneously on the computer keyboard.



# INSTRUCTION FOR WINDOWS SYSTEMS

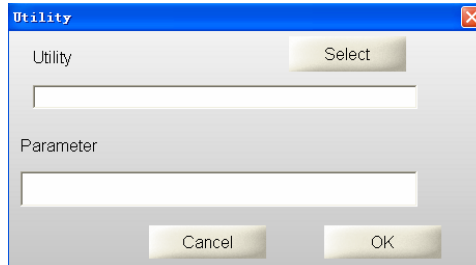


## Example 2

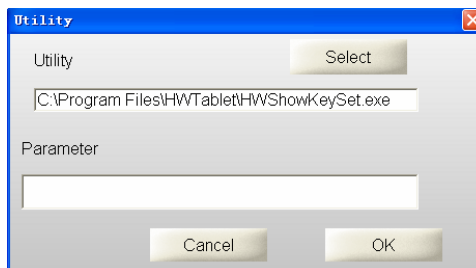
Select *Application* from the drop-down menu then *Utility* will pop up automatically. Click *Select* button and choose one application program you want to run then click *OK*.

# INSTRUCTION FOR WINDOWS SYSTEMS

- Left Key
- Right Key
- Middle Key
- Double Click Key
- Scroll Up
- Scroll Down
- Keyboard
- Application
- Disable



A screenshot of a Windows-style dialog box titled "Utility". It has a blue title bar with a close button. The dialog contains a "Utility" label, a "Select" button, and an empty text input field. Below that is a "Parameter" label and another empty text input field. At the bottom are "Cancel" and "OK" buttons.

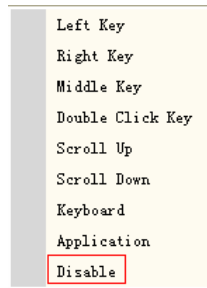


A screenshot of the same "Utility" dialog box. The text input field under "Utility" now contains the file path "C:\Program Files\HWTablet\HWShowKeySet.exe". The "Parameter" input field remains empty. The "Cancel" and "OK" buttons are at the bottom.

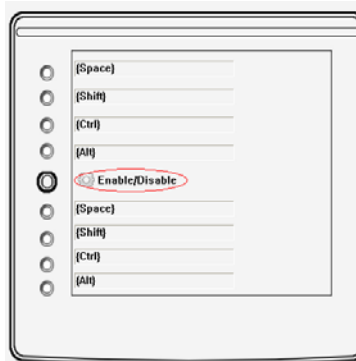
# INSTRUCTION FOR WINDOWS SYSTEMS

## Example 3

Express key can be disabled by choosing *Disable* from the drop-down menu.



## **b. Touch Ring**



The default setting of Touch Ring is enabled. If want to disable it, please click the *Enable/Disable* button.

## **c. Reminder Displays**

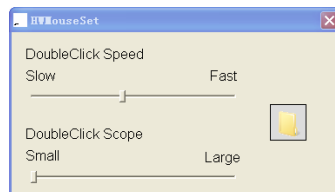
## INSTRUCTION FOR WINDOWS SYSTEMS

When *Reminder Displays* button is pressed down, the screen will display the functions of the Express Keys, such as the bellow picture. The function of that button cannot be disabled.



### **d. Double-Click speed setting**

Open *Hanvon Tablet* folder in *All Programs*. Choose *Mouse Setting*, then users can drag the slider to adjust the double-click speed and scope, and test the setting on the folder icon.



## Chapter 3 Instruction for Mac Systems

### 3.1 System Requirements

RAM	256MB
Hard-disk	200MB
OS	MAC-OS 10.5 or later
Port	USB1.1or 2.0

### 3.2 Installation

Connect the graphic tablet's USB cable to the computer's USB port.

#### **Step 1**

Insert the driver CD into the CD-ROM drive then find the install file in *MacOS X* folder, click on the *Install.dmg* icon to run the file.

## INSTRUCTION FOR MAC SYSTEMS

---



install.dmg

### **Step 2**

Double-click the *Install* icon.



Install

### **Step 3**

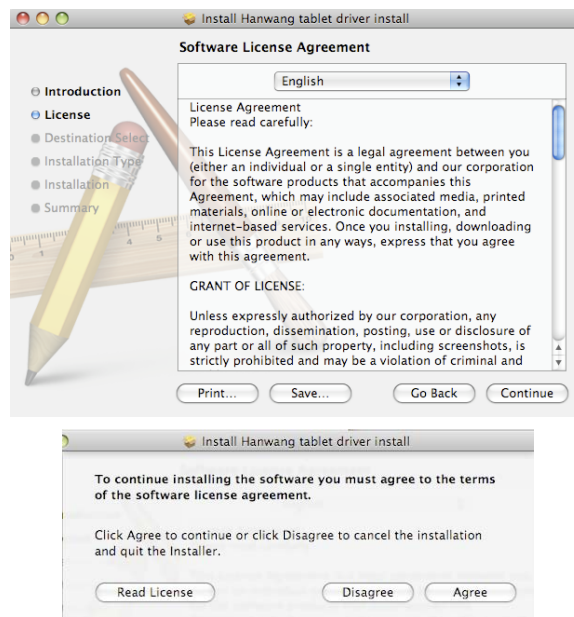
Click *Continue* in the reminder window.



### **Step 4**

Please read the license agreement carefully then click *Continue*. After that click *Agree* to continue the installation.

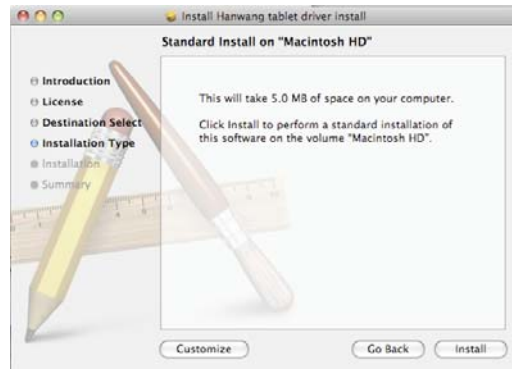
# INSTRUCTION FOR MAC SYSTEMS



## **Step 5**

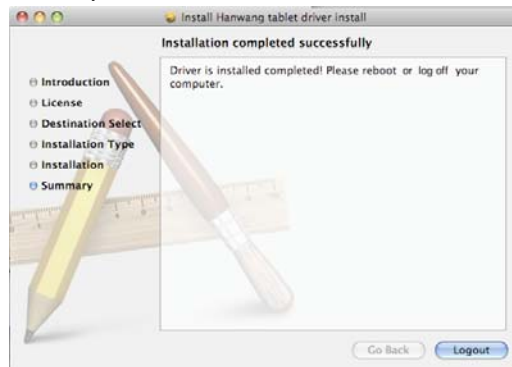
Click *Install* to install the tablet driver.

# INSTRUCTION FOR MAC SYSTEMS



## **Step 6**

When the install process is finished, please click *Logout* and reboot your computer.

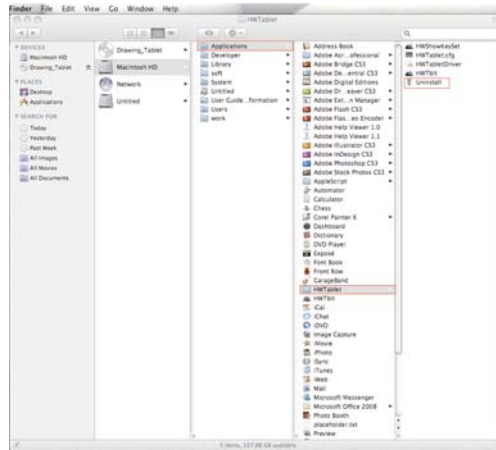




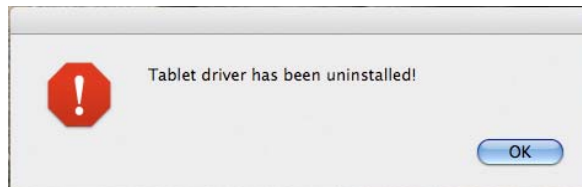
# INSTRUCTION FOR MAC SYSTEMS

## 3.3 Uninstalling

Open *HWTablet* folder in *Applications*. Choose *Uninstall* to remove the tablet driver.



Please click *OK* when the driver has been removed.  
(Suggestion: Reboot the computer) .



# INSTRUCTION FOR MAC SYSTEMS

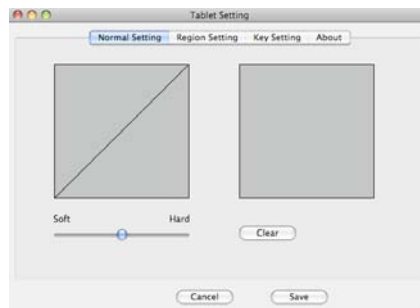
## 3.4 Configuration

Connect the tablet to your computer by USB cable and port.

The *HWTblt* icon has been added in the applications. Double-click the *HWTblt* icon to open the tablet control panel.



### 3.4.1 General Configuration



# INSTRUCTION FOR MAC SYSTEMS

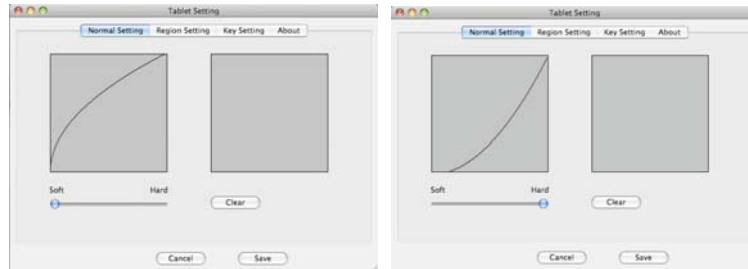
---

## **a. Adjusting Pressure Sensitivity**

Pen pressure sensitivity can be adjusted by dragging the slider between *soft* and *hard*. The right area is the pressure test area. Adjustment can be saved by clicking the *Save* button, or can be canceled by clicking the *Cancel* button.

## **b. Pressure Curve Graph**

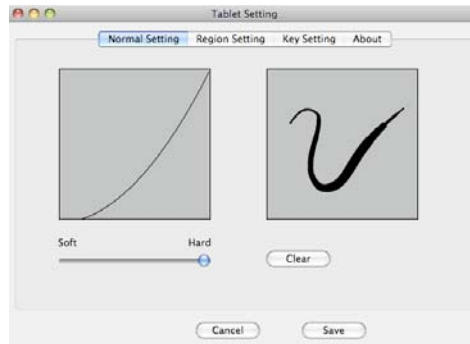
Pen pressure sensitivity changes are displayed on the Pressure curve graph. The images below show the graphs for light and heavy pen pressure respectively.



## **c. Pressure Testing Area**

The right area is the pressure test area which is for testing the pen pressure. All the writing and drawing in the test area can be cleared by clicking the *Clear* button.

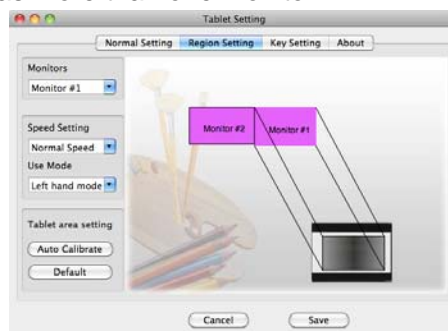
# INSTRUCTION FOR MAC SYSTEMS



## 3.4.2 Mapping

### a. Multi-Monitor Mode

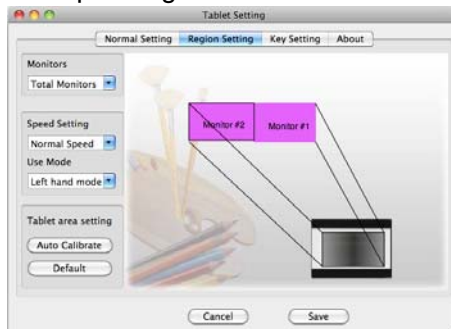
You can drag the displays to the desired order if your computer has more than one monitor.



## INSTRUCTION FOR MAC SYSTEMS

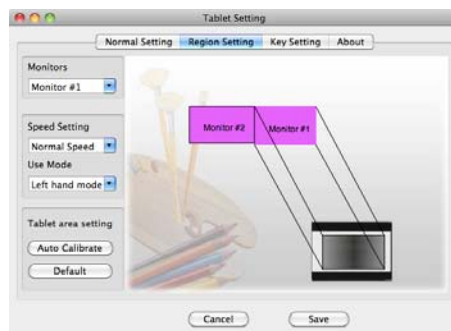
### a) Full screen

Choose *Region Setting* and select *Total Monitors* from the drop-down menu. You will see the active area of the monitors corresponding to the area in table is mapped.



### b) Monitor #1

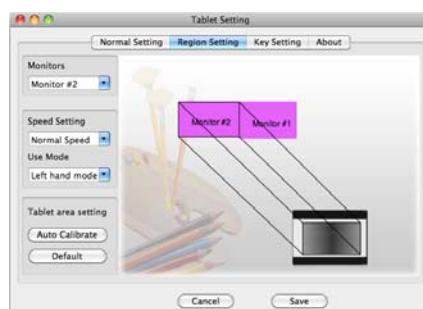
Select *Monitor #1* from the drop-down menu to set the area in the tablet to control Monitor #1.



## INSTRUCTION FOR MAC SYSTEMS

### c) Monitor #2

Select *Monitor #2* from the drop-down menu to set the area in the tablet to control Monitor #2.

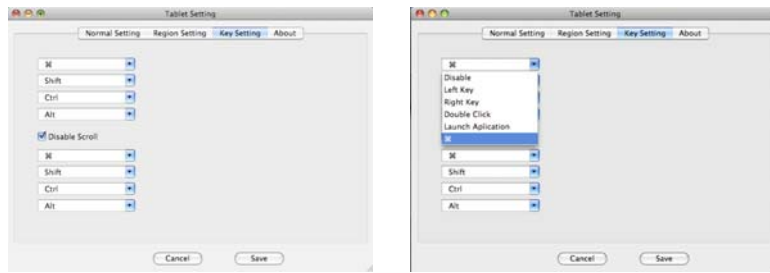


### 3.4.3 Express Keys Setting

#### a. Express keys

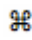
There are eight express keys on the tablet. You can set the functions for each key from each drop-down menu in *Key Setting*. Click *Save* to save the setting or click *Cancel* to quit. The Touch Ring is for quick scrolling, zooming, controlling brush size, and enable rotated.

# INSTRUCTION FOR MAC SYSTEMS

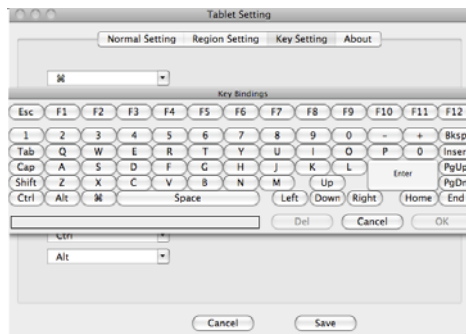


You can select *Launch Application* from the drop-down menu, then choose one application program you want to run, click *open* and then click *Save* to save the setting.



You can also define the function by choosing  from the drop-down menu for each key and select shortcut from the *Key Bindings*.

# INSTRUCTION FOR MAC SYSTEMS



## **b. Disable the Touch Ring**

Choose *Disable Scroll* to disable the touch ring on the tablet.

## **c. Reminder Displays**

It is used for displaying settings of custom express keys. When this button is pressed down, the screen will display the functions of the Express Keys. The function of that button cannot be disabled.





## Chapter 4 Bundled Software

### 4.1 Hanvon Shell

#### 4.1.1 Shell Summary

Hanvon Shell is a shortcut startup application for starting bundled Hanvon Software or other software.

Default startup style: it will be operated automatically when you startup your computer; if user exits shell from the application, it will switch to the manual startup style; double



click the shortcut icon on the desktop to startup the Shell toolbar.

**Main interface will be shown as following:**



**Icons explanations as following:**

## **BUNDLED SOFTWARE**

---

### **1. Area for Dragging Shell**

After opening shell toolbar, you can drag the icon to adjust the positions at up, down, left and right locations on computer's screen;

When cursor have been left the toolbar for 5 seconds or later, Shell toolbar will be hid, Single-click it to display the main interface;

### **2. PenWrite**

Editing Microsoft Office documents formatted as: Word, Txt, Excel and PPT by handwriting directly;

PenWrite Provides English, German, French, Italian, Dutch, Spanish, Swedish, Portuguese (Portugal), Portuguese (Brazil) multi-languages recognition

### **3. PenWrite Asia**

Editing Microsoft Office documents formatted as: word, txt, Excel and PPT by handwriting directly;

PenWrite Asia Provides Simplified Chinese, Traditional Chinese (Hong Kong) , Traditional Chinese (Taiwan), Japanese and Korean languages recognition

## **BUNDLED SOFTWARE**

---

### **4. PenSign**

This program enables you to add your handwriting signature in a document such as Microsoft Office word /PPT;

### **5. PenMail**

Providing handwrite email in Outlook Express or Windows Mail.

### **6. PenMark**

Providing handwrite mark on desktop or pictures;

### **7. WhiteBoard**

A software application simulates Electronic Whiteboard. The monitor is like a marker board in front of users and become a simplified Electronic Whiteboard through a projector.

### **8. System Menu**

Configure shell setting


### **9. Tablet Setting**

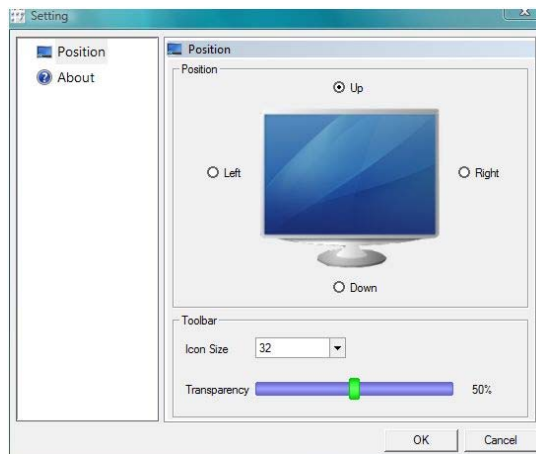
Configure tablet setting

## BUNDLED SOFTWARE

### 4.1.2 System Menu Shell



Click  to enter Shell configuration interface shown as following figure:



Position: Set the position for Hanvon Shell on the screen;

Icon Size: Set the icon size shown in the Hanvon startup toolbar;

Transparency: Set the transparency for Hanvon startup


## BUNDLED SOFTWARE

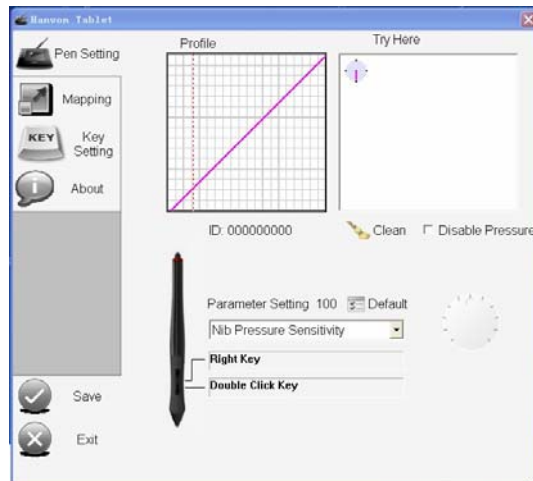
---

toolbar.

### 4.1.3 Tablet Setting



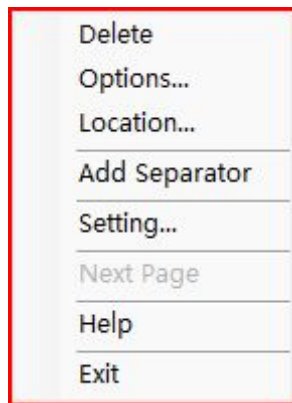
Click  to enter tablet setting interface shown as following figure:



## BUNDLED SOFTWARE

---

### 4.1.4 Shell right key menu



Delete: Delete the current icon or separator;

Options: Change name and icon of the current software

Location: Find the target file position which the software is saved

Add Separator: Add the separator in the location where the cursor is placed.

Setting: ( the function is the same as System Menu )


Next Page: Turn to next page

## BUNDLED SOFTWARE


---

### 4.2 PenWrite



Click  on the shell to open **PenWrite** application. Open WORD application for editing, Then users may handwriting input words, sentences, punctuation & symbol and numbers **in English, German, French, Italian, Dutch, Spanish, Swedish, Portuguese (Portugal), Portuguese (Brazil)**.The handwriting characters would be turn to be text automatically to the location where the cursor was placed.



Click  on the shell to open PenWrite Asia application. Open WORD application for editing, Then users may handwriting input characters, punctuation & symbol and numbers in Simplified Chinese, Traditional Chinese (Hong Kong) , Traditional Chinese(Taiwan) , Japanese and Korean.

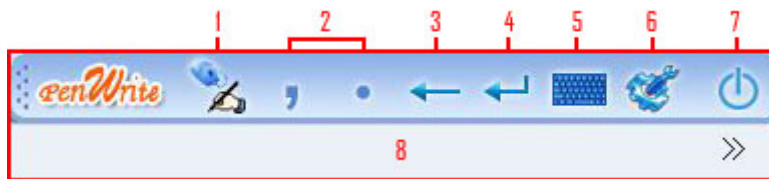
Note: Please confirm the cursor's location firstly, and then start handwriting.

PenWrite and PenWrite Asia have the same main interface.

Instruction as following:

# BUNDLED SOFTWARE

## Icon explanations:



## Basic functions

1. Pen & Mouse Mode

Switch the status between Pen & Mouse Mode



\ Pen Mode



\ Mouse Mode



2. Comma & Period

Edit “,” or “.” by clicking



Comma or



Period

3. Backspace

Backspace by clicking



4. Enter

Enter by clicking



5. Keyboard



## BUNDLED SOFTWARE


---

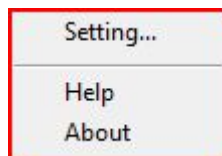


Click  to startup software keyboard

### 6. System Menu



Click  to enter an interface shown as following figure:



### 7. Exit



Click  to exit

### 8. the candidate area for recognized results

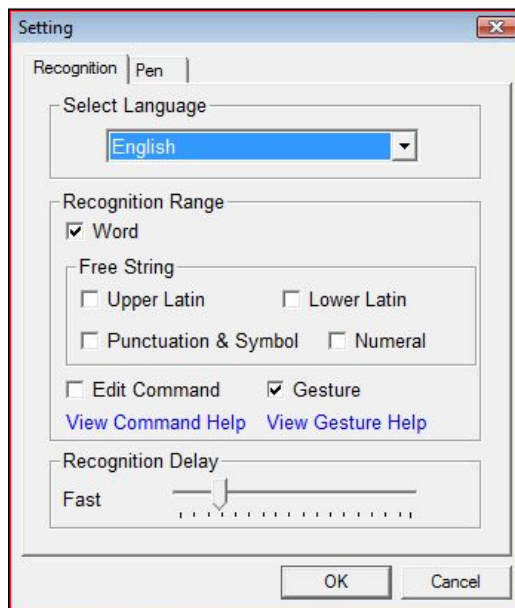
## Setting

Click “setting...” shown as following figure:

✧ **Setting for PenWrite—Recognition**

## BUNDLED SOFTWARE

---



[Select Language] Choose recognition language

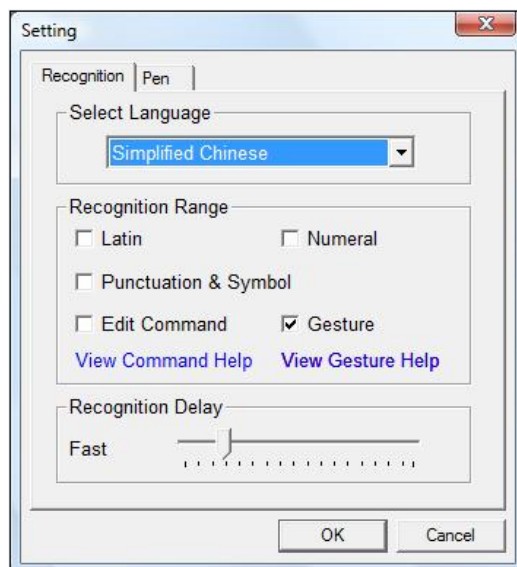
between 9 different languages;

[Recognition Range] Choose the recognition range;

[Recognition Delay] Adjust the recognition interval  
time.

## BUNDLED SOFTWARE

### ✧ Setting for PenWrite Asia—Recognition

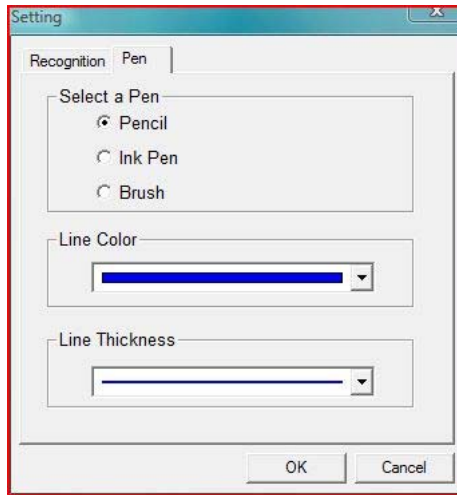


[Select Language] Choose recognition language between Simplified Chinese, Traditional Chinese (Hong Kong) , Traditional Chinese (Taiwan) , Japanese and Korean. [Recognition Range] Choose the recognition range;  
[Recognition Delay] Adjust the recognition interval time.

### ✧ Setting—Pen

## BUNDLED SOFTWARE

---



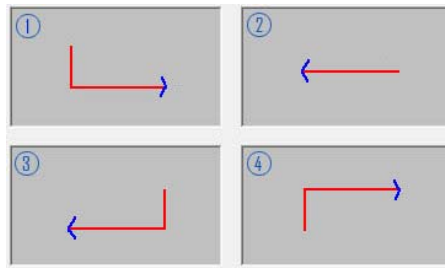
Selecting the pen type, line colors or line thickness

### ✧ **Gesture:**

- ① Space, ②Backspace, ③Enter, ④Tab

# BUNDLED SOFTWARE

---



✧ **Edit Command:**

$\wedge$  = Ctrl

For example:

$\wedge$  A

Ctrl+A

$\wedge$  X

Ctrl+X

**Edit Command supported as bellow:**

Ctrl + A

Ctrl +C

Ctrl +V

Ctrl +X

Ctrl +Z

## BUNDLED SOFTWARE

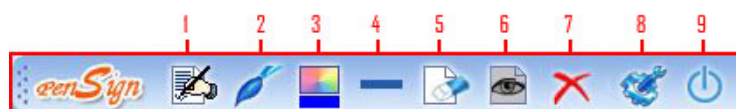
---

### 4.3 PenSign

Click  to open PenSign application

- The program can be used in Microsoft Office 2000 and the version higher, Word, Excel, PowerPoint ( Notice: please don't write directly in Word outline\Excel pagination preview\ PowerPoint insert images );
- Support the Word Pad and Windows Draw (when the script will be shown opacity, it wouldn't support "Hide Sign & Show Sign" and "Delete Sign" functions) .
- The signature size and position can be adjusted freely.

#### **Icon explanations:**



1. Start Sign & End Sign;  
Start and end to sign;
2. Pen(Brush \ pencil \ Ink Pen)  
Select pen type
3. Color

## BUNDLED SOFTWARE

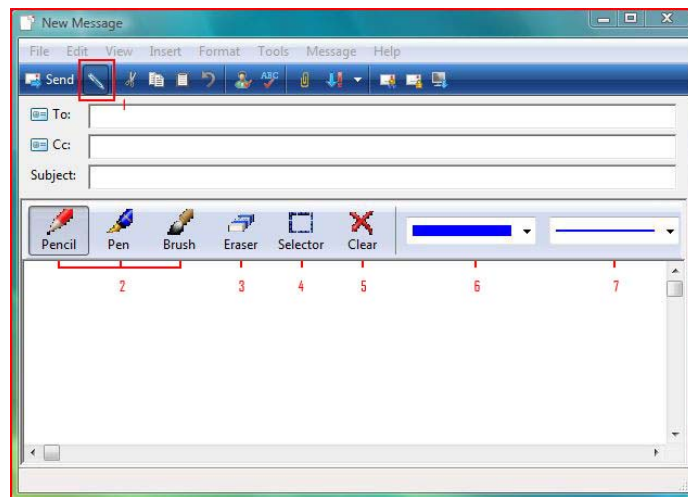
---

- Select line color
- 4. Width
  - Select line thickness
- 5. Clear all
  - Clear current script
- 6. Hide Sign & Show Sign
  - Show or hide your signature
- 7. Delete Sign
  - Delete all script
- 8. System Menu
  - Help & About
- 9. Exit

### 4.4 PenMail



Click  to open PenMail application.

## BUNDLED SOFTWARE



### Icon explanations:

#### 1. PenMail

When pressing icon  down, it will switch to handwriting status; and it will return to text editor status when lifting icon .

#### 2. Pen(Brush \ pencil \ Ink Pen)



## BUNDLED SOFTWARE

---

- Select pen type
- 3. Eraser  
Erase the individual script
- 4. Selector  
Select part script
- 5. Clear  
Clear all script
- 6. Colors  
Select line color
- 7. Width  
Select line thickness


The program can be used in Outlook Express 6.0 and the version higher in Windows 2000/XP OS, and Windows Mail in Windows Vista OS. When the system operating is Windows 2000, please install IE6 and Outlook Express 6 or higher version before applying PenMail.

PenMail can also support Vista x32 but not Vista x64;

## BUNDLED SOFTWARE

---

### 4.5 PenMark

Click  to open PenMark application; you can handwrite marks on the screen or pictures.



#### Icon explanations:

1. Start\exit screen annotation
2. Open picture
3. Save
  - Files can be saved as BMP, JPG, TIF, PNG or GIF format
  - Suggest you to select TIF format when the file has several pages.
  - Default saving path: C:\Documents and Settings\Administrator\My Documents\My Pictures.
4. Pen(Brush \ pencil \ Ink Pen\ High Lighter)  
Select Pen type
5. Color  
Select line color
6. Width  
Select line thickness

## BUNDLED SOFTWARE

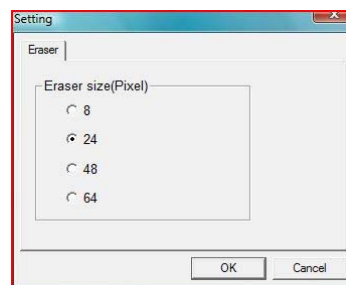
---

7. Eraser  
Clear part script
8. Clear all  
Clear all script
9. Tools  
Insert line\figure\text\pictures



10. System Menu  
Setting, Help, About
11. Exit

### Setting



Setting the size of eraser

## BUNDLED SOFTWARE

---

### 4.6 WhiteBoard



Click  to open WhiteBoard application.



#### **Icon explanations:**


1. Save
  - The document can be saved as BMP, JPG, TIF, PNG or GIF format
  - Suggest you to select TIF format when the document has multiple pages.
  - Default saving path: C:\Documents and Settings\Administrator\My Documents\My Pictures.
2. New Page
  - Add a new page
3. Pen (Brush \ pencil \ Ink Pen\ High Lighter)
  - Select pen type
4. Color
  - Select line color
5. Width
  - Select line thickness

## BUNDLED SOFTWARE

---

6. Eraser  
Clear part script
7. Clear all  
Clear all script
8. Tools  
Insert Line\figure\text\pictures



9. Magnifier
  - Click the right key, the menu will popup, you can set spotlight size, shape, radio, high quality display, show border and exit
  - Exit the application directly by pressing ESC
10. Spotlight
  - Click  down arrow, the menu will popup, you can set spotlight transparency, shape and exit.
  - Exit the application directly by pressing ESC
11. System Menu

## BUNDLED SOFTWARE

---

Setting, Help, About

12. Previous

Turn to previous page

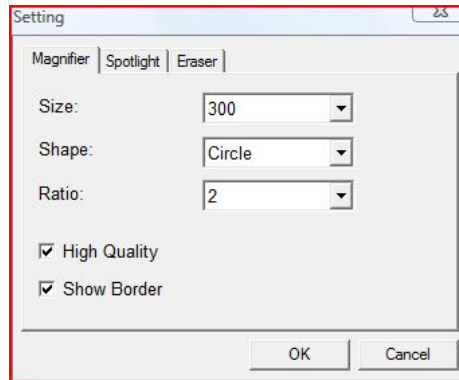
13. Next

Turn to next page

14. Exit

### **Setting**

◇ Setting--Magnifier

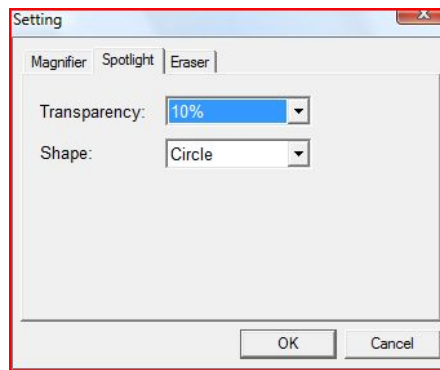


Setting magnifier size, shape, ratio, high quality display  
and show border

◇ Setting—Spotlight

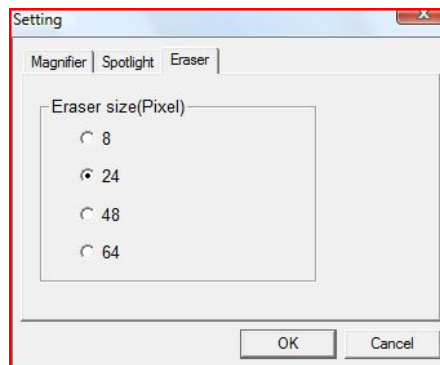
## BUNDLED SOFTWARE

---



Setting spotlight transparency and shape

✧ Setting—Eraser



Setting the size of eraser

## Chapter 5 Maintenance

### 5.1 Pen Holder

Front view with pen placed in the pen holder



Pen holder with pen nib storage



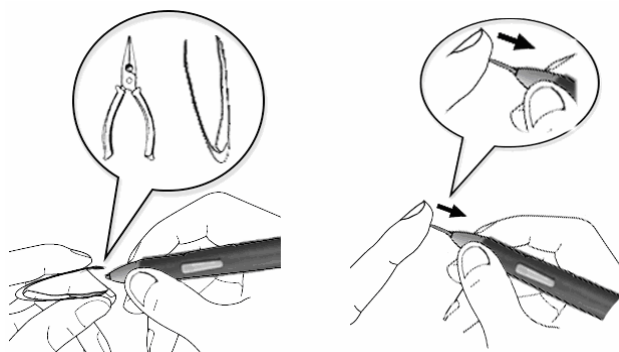


## MAINTENANCE

---

### 5.2 Exchange Pen Nib

If users need to change pen nib, please using tweezers, grasp the nib and draw it out. Once removed, a new nib may be inserted into the pen.



### 5.3 Cautions

Do not put the tablet on a metal surface, such as iron or aluminum alloys.

Due to a CRT monitor's electromagnetic radiation, do not use the drawing tablet too close to a CRT monitor.

## **Appendix**

### **Warranty**

#### **Limited Warranty**

Hanvon Corporation warrants that this product is free from any defects in workmanship or materials under normal use and conditions for a period of two (2) years for Europe and one (1) year for other region from the date of original purchase. If such a defect is discovered within this warrant's limitations, Hanvon agrees, at its sole discretion, to repair or replace the same item with one of equal value, free of charge to the original consumer purchaser.

This warranty shall not apply if this product is modified, misused, tampered with, subject to abnormal working conditions, or transferred to someone other than the original consumer purchaser.

#### **Warranty Redemption for US Market Only**

Should this product fail to function in a satisfactory manner, please return it to the store where it was originally purchased. Please be sure to contact us at [service@hanvon.com](mailto:service@hanvon.com) to

## APPENDIX

---

obtain a Return Merchandise Authorization Number before you return it, and within your email please include your name, address, phone number, a copy of the original receipt, serial number and the reasons for returning the product.

Should this fail to resolve the matter and service is still required by reason of any defect or malfunction during the warranty period, Hanvon Corporation will repair or replace this product without charge (except for a charge for handling, packing, return UPS/postage, and insurance).

### **Technical Support**

Should you have any questions or comments, please contact us via [tech@hanvon.com](mailto:tech@hanvon.com), or visit our website at:

Global site: <http://www.hanvon.com>

US site: <http://usa.hanvon.com>

### **Online Registration for US Market Only**

To better serve our customers, please take the time to register online at <http://usa.hanvon.com>. This information is for internal use only. No information provided will be

## APPENDIX

---

distributed to soliciting organizations.

The registration also allows you to receive valuable information and enjoy special savings on upgrades for products.

**Thank you for choosing Hanvon products.**