

User manual



WaterLoggerEWS User Manual

Ver 1.0

Content

1. Introduction	3
2. Notes.....	3
3. Overview	4
4. Quick start	5
5. Hardware	9
6. Early warning system	20
7. Software	25
8. PC configuration software.....	37
9. Technical specification.....	52
10. Quick reference	53

Equipment for pedology, hydrology, meteorology, research of plants and environmental diagnostics

1. Introduction

In today instrumentation it is often necessary to measure signals which are weak and measuring system should be low noise, high resolution and low power consumption. WaterLoggerEWS is universal datalogger, configurable by software, suitable for mobile as well as permanent installation used in laboratory and in the field offering up to 8 analog inputs and 4 digital inputs. Additionally, it can be connected to Solinst water level sensor. It is designed especially for early warning system.

The instrument was designed by team of professionals with long time experience in low level and noise signals, software microprocessor programming and oriented to datalogger and sensors for extreme weather conditions. Employing latest high technology we are proud to present you measuring system, which is simple in use, but offers high precision measurement and all features which are expected from today's dataloggers. It is configurable by the user by simple set of commands or PC configuration software. The applications range from meteorology, metrology, environmental monitoring, early flood warning, industry, research, at schools and laboratory.

2. Notes

Before starting to work with WaterLoggerEWS it is recommended to read this manual!

Manufacturer reserves the right to upgrade specifications without prior notice. In the case you have questions or comments, please, contact manufacturer at the following address:

Ekotechnika spol. s r.o.
Mokropeska 1832
252 28 Cernosice u Prahy, Czech republic
+420 251 640 511, info@ekotechnika.cz

Equipment for pedology, hydrology, meteorology, research of plants and environmental diagnostics

3. Overview

WaterLoggerEWS is high-end instrument designed for measuring, processing, recording (datalogging) to the memory of measured data in real time for industrial applications. Above basic datalogger functionality, there is powerful Early Warning System. The instrument is designed especially with intention to precision, low power consumption and comfortable, user-friendly operation. It employs four single ended analog unipolar inputs with 12 bit resolution and additional four differential unipolar/bipolar inputs with 24 bit resolution. Additionally battery voltage is measured internally, atmospheric pressure and serial Solinst Levelogger sensors are measured. With definition of polynomial coefficients (of the 3-rd order) measured values are converted to engineering units. Four digital inputs are configurable by software for measuring frequency, time (logical level) or as counters. Again, with definition of polynomial coefficients (of the 3-rd order) measured values are converted to engineering units. For data logging 512kB of FLASH memory is available. Main data logging medium is SD memory card for long time data storage. Hardware and software support for temperature sensors PT100 is provided.

WaterLoggerEWS has two serial ports. First RS232/RS485 port is designed as service port and can be used for basic setup and sending measured data online. It is configurable as RS232 or RS485 serial port by the software. This port is shared with RS232 port for Solinst sensor. Second serial port RS232 is used for communication with GSM/GPRS modem and is not available for the user. On service port user can set up 300bps up to 115200bps speed. GSM/GPRS modem is quad band modem for worldwide usage. Datalogger sends measured data as emails or to FTP server.

Real time clock circuit is keeping the time all the time. There is a lithium battery of standard size and with low power design operational life is more than one year.

WaterLoggerEWS has a switched power supply output, which can be used for powering sensors. Additionally, reference voltage of 2.5Vdc is available.

Simple system power management is provided. One input for minimum power consumption with range 4Vdc to 20Vdc is used in only battery operation. Second universal input with range 5Vdc to 12Vdc is provided with support to Pb 12V battery charging feature. One more input for 12Vdc solar panel is provided with support to Pb 12V battery charging. Battery charger controls overcharge and deep discharge to protect battery from damage.

Two LED indicators are used to indicate the operation.

WaterLoggerEWS is built on professional solution. Therefore all hardware components are designed for wide temperature range operation. Software solution includes multitasking real time operating system with time synchronization over the internet. This makes the device robust, stable and easy to use.

Equipment for pedology, hydrology, meteorology, research of plants and environmental diagnostics

4. Quick start

Prior to starting work with WaterLoggerEWS , please, read this user manual carefully.
After unpacking open the box unscrewing four screws.



Fig 1. Opening the box

Connect battery to the datalogger. For monitoring serial line and communication, connect supplied serial cable from WaterLoggerEWS to your PC.

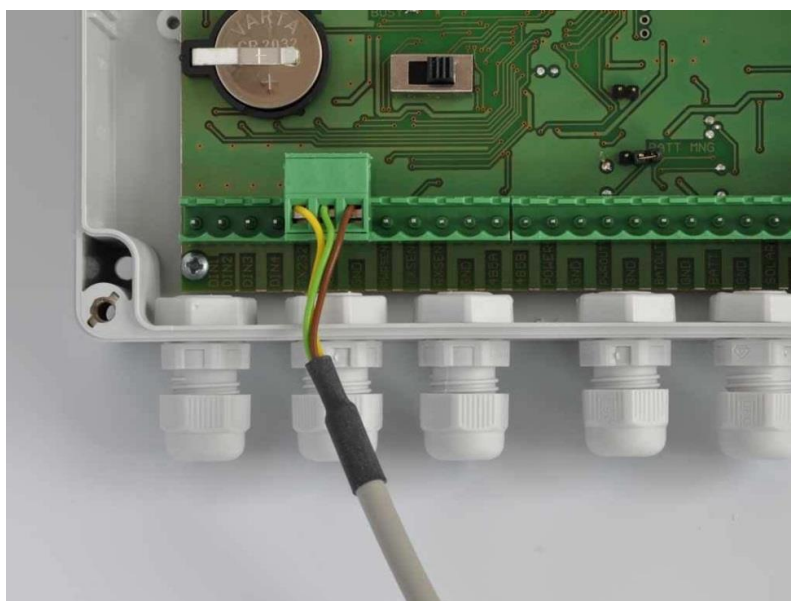


Fig 2. Connecting serial cable

Equipment for pedology, hydrology, meteorology, research of plants and environmental diagnostics

Setting for communication is 115200bps, 8 bit, parity none, 1 stop bit. Type *Service* command. The response will be:

Service mode started

Type ? command. The response will be:

<i>SN</i>	<i>002/0211</i>
<i>Name</i>	<i>WaterLogEWS</i>
<i>MeasInterval</i>	<i>60 sec</i>
<i>MeasDelay</i>	<i>0 sec</i>
<i>LogInterval</i>	<i>60 sec</i>
<i>Vref</i>	<i>2500.000 mV</i>
<i>Serial1</i>	<i>115200 bps</i>
<i>Serial2</i>	<i>115200 bps</i>
<i>RS485</i>	<i>0</i>
<i>EWS</i>	<i>0</i>
<i>Date</i>	<i>16.1.2011</i>
<i>Time</i>	<i>08:58:04</i>
<i>OK</i>	

Type *Modem?* command to see actual modem settings:

<i>ModemInterval</i>	<i>0 hr</i>
<i>ModemDelay</i>	<i>0 min</i>
<i>ModemOnTime</i>	<i>14:00:00</i>
<i>ModemOnDuration</i>	<i>10 min</i>
<i>ModemPIN</i>	<i>253116</i>
<i>ModemNumber</i>	
<i>APN</i>	<i>internet.t-mobile.cz</i>
<i>IP</i>	<i>smtp.envirodata.eu</i>
<i>EmailFrom</i>	<i>jannovak@email.cz</i>
<i>EmailTo</i>	<i>inputdata@envirodata.eu</i>
<i>UserName</i>	<i>MeasSender20</i>
<i>Password</i>	<i>ubxC74dqT5</i>
<i>TimeServer</i>	<i>time.ien.it</i>
<i>TimeZone</i>	<i>0</i>
<i>Ftp</i>	<i>0</i>
<i>SmsCenter</i>	
<i>OK</i>	

Now your WaterLoggerEWS is working.

Equipment for pedology, hydrology, meteorology, research of plants and environmental diagnostics

Turn on power (position ON on power switch). WaterLoggerEWS is equipped with 2 LED indicators. Green is indicating processor is busy. Red indicator is blinking every 5 seconds and special flashing sequence when sending data over modem. Red LED indicates SD memory card access.

Turn off the switch (position OFF). Now connect all sensors you will use. Send appropriate configuration to the datalogger. Turn on the switch and WaterLoggerEWS starts to measure data.

Before starting to send data over the internet you will need SIM card with internet connection enabled. SIM card holder is located on upper right corner.

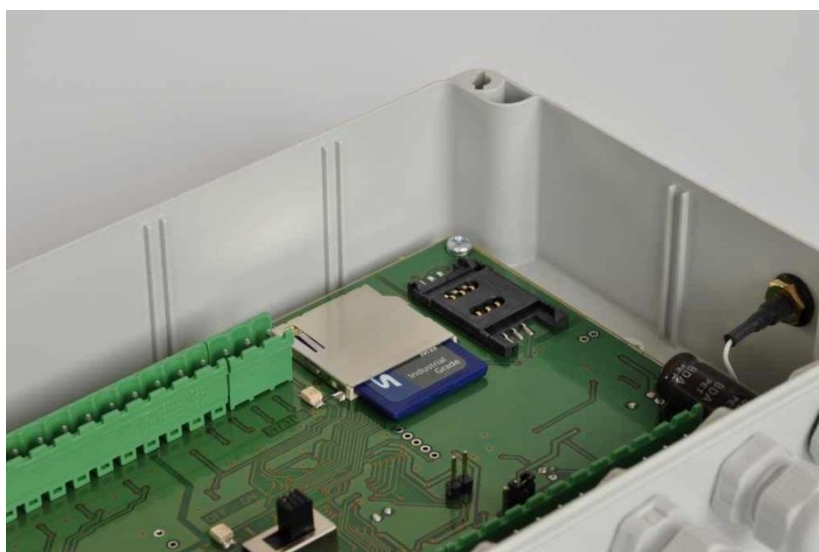


Fig 3. Location of SIM cardholder

Turn off datalogger. Open SIM card doors. Observe orientation of SIM card and insert it into the slot



Fig 4. Observe correct orientation and insert SIM card

Close the door

Equipment for pedology, hydrology, meteorology, research of plants and environmental diagnostics



Fig 5. After SIM card installation

Next you need to connect antenna.



Fig 6. Antenna connection

Now datalogger is ready for the operation. For correct modem operation, you need to setup following parameters (according your actual settings): ModemPIN, APN and EmailTo address.

Equipment for pedology, hydrology, meteorology, research of plants and environmental diagnostics

5. Hardware

Mechanical solution of WaterLoggerEWS is based on single board design with small dimensions and weight.



Fig 7 Front view

Outer dimensions 170mm (width), 140mm (height) a 50mm (depth) makes it suitable for permanent installations as well as for mobile applications. Connectors inside are located on top and bottom side, from the bottom there are cable glands for sensor cables and one pressure port. Thanks to clear layout the user can connect relatively large number of sensors with easy. For better access to input connections, connectors are divided by two to four pins according to the function.

Equipment for pedology, hydrology, meteorology, research of plants and environmental diagnostics

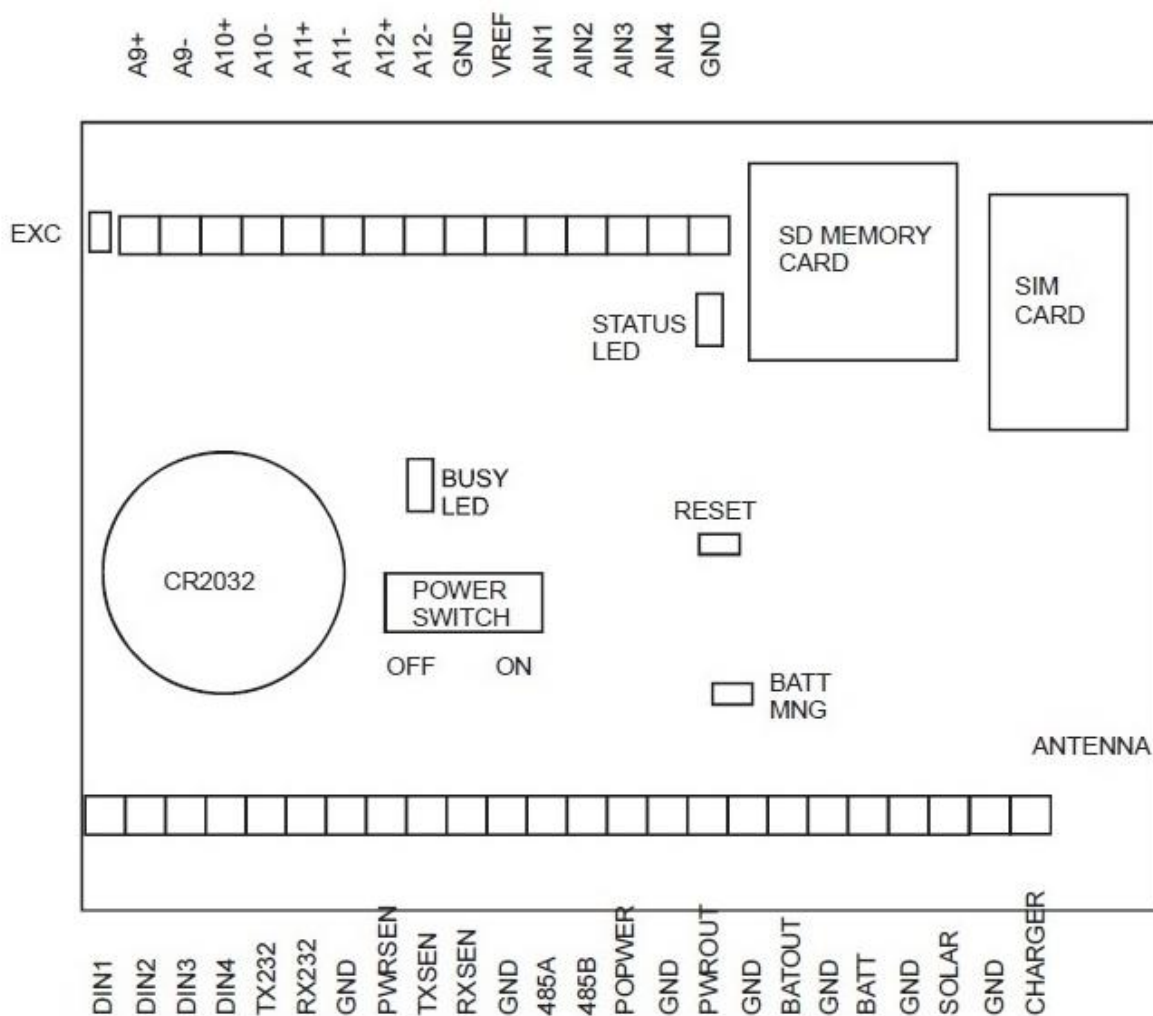


Fig 8 Inside view – description of connectors

Equipment for pedology, hydrology, meteorology, research of plants and environmental diagnostics

Ekotechnika spol. s r.o.

Mokropeska 1832

252 28 Cernosice, Czech Republic

Exclusive representation of Eijkelkamp b.v, ADC Ltd, Solinst Canada, Decagon and Soilmoisture Equipment Corporation

phone +420 251 640 511

fax: +420 251 640 512

info@ekotechnika.cz

VAT: 25147501

REG.: CZ25147501

www.ekotechnika.cz

Bank: CSOB,

Account No.

581409153/0300

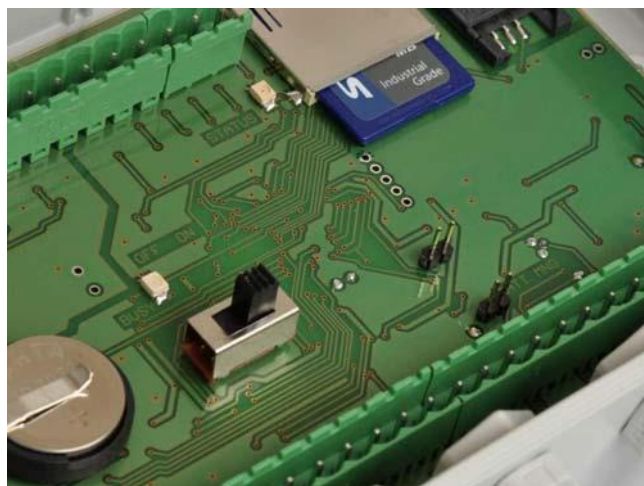


Fig 9 ON/OFF switch, LED indicators and jumpers

WaterLoggerEWS board has the following components:

ON / OFF switch – power switch. It is used primary during transportation for saving main battery or when datalogger is not used.

BUSY and STATUS LED indicators – optical indicators of datalogger operation. BUSY LED is located close to ON/OFF switch and the color is green. Whenever datalogger is busy (measuring, calculating, sending data to serial line...) this LED is on. If the logger is only waiting between measuring intervals, green LED is off. This is primary indication of busy state. STATUS LED is located next to SD card and the color is red. It has three indication functions:

1. whenever data are red or written to SD card, LED is ON. During this time it is not possible to remove or insert the card.
2. STATUS LED flashes every 5 seconds to indicate datalogger operation. This feature is useful when long time between measurements is selected and the user has the indication that logger is operating.
3. STATUS LED indicates individual states during GSM/GPRS data transfer

Modem status	LED on [ms]	Periods [s]
OFF (logger off)	0	infinite
OFF (logger turned on)	60	5
Registering to GSM network	1000	2
Registered to GSM network	120	2
Time Synchronization	500	1
Data transfer	Two flashes 120	1
Remote call	500	1

Equipment for pedology, hydrology, meteorology, research of plants and environmental diagnostics

Lithium battery - CR2032. The battery is reserved for real time clock.

Jumper RESET – by shorting the jumper you will reset the instrument. It is not necessary to use it by the user – it is reserved for production purposes.



Fig 10 Excitation jumper

EXC jumper – this jumper serves as excitation sources for PT100 sensors. It is connected to 3.9kohm resistor from 2.5V reference to +A9. If PT100 is not used, do not connect it.

SD memory card – any SD memory card can be used. Software support both SD and SDHC cards. The card is used only for data storage and is not intended for more manipulation (deleting files or other operations). Deleting and moving files are much faster on PC computer.

BATT MNG jumper - this jumper is used when power supply is 12Vdc solar panel or charger input (5Vdc to 12Vdc). If this jumper is removed, the only power source input is POWER and control circuitry of charger is disconnected. This will lead to minimum power consumption operation.

Equipment for pedology, hydrology, meteorology, research of plants and environmental diagnostics

SIM card holder – if GPRS data transfer is needed, there must be inserted SIM card with valid data services.



Fig 11 Pressure port

Pressure port – it is used to transfer atmospheric pressure to internal pressure sensor, with IP68 protection class.

Description of terminals:

AIN1 to AIN4 – analog single ended inputs with 12 bit resolution. Input range is 0V to 2.5V.

A9 to A12 – differential input pairs with 24 bit resolution. It can be selected as unipolar or bipolar inputs with range from 0...19mV (-19mV ... +19mV) to 0...2.5V (-2.5V ... +2.5V) by software.

VREF – reference output of 2.5V for excitation of sensors (potentiometric sensors).

GND – ground pin. All GND pins are electrically connected on the board. For analog inputs GND pins are separately routed for best low noise performance.

DIN1 to DIN4 – digital inputs. Can be selected as frequency input, counter input or time of logical one input by software.

Equipment for pedology, hydrology, meteorology, research of plants and environmental diagnostics

RX232 and TX232 – Serial line signals. This port serves as service port.

PWRSEN, RXSEN, RXSEN – additional serial line for communication with sensors. This port connects to Solinst Levellogger serial sensors. It is multiplexed with RX232 and TX232

485A and 485B – Serial line signals for RS485. It is software configurable and multiplexed with RX232 and TX232.

POWER – power supply input with input range 4Vdc to 20Vdc. It is used for the lowest power consumption. In this case BATT MNG jumper should be removed and battery is not charged or protected from deep discharge.

PWROUT – output of power supply switched only for period of measurement. It is used to power sensors, which do not need continuous power (e.g. relative humidity probe).

BATOUT – output of power supply backed up by connected battery. This output is used for powering devices or sensors which needs continuous power (e.g. wind speed sensor). It has deep discharge protection feature.

BATT – input for connecting 12Vdc lead acid battery. The battery is conditioned (charged by cca 350mA and protected from deep discharge condition at about 10.5V). BATT MNG jumper must be inserted.

SOLAR – input for solar panel with nominal 12Vdc output. BATT MNG jumper must be inserted.

CHAR – input for charger source with 5Vdc to 12Vdc output. BATT MNG jumper must be inserted.

ANTENNA – GSM/GPRS antenna for remote data transfer.

Electronic design of WaterLoggerEWS is oriented to precision measurements with high resolution. For this purpose it is equipped with two types of analog to digital converters. They differ in resolution (12 bits or 24 bits), configuration options, speed of conversion and applications for which they are used. There are 4 single ended unipolar inputs with 12 bit resolution (input range 0-2.5Vdc) and 4 differential unipolar/bipolar inputs with 24 bit resolution (input range 0-19mVdc to 0-2.5Vdc or +/- 19mVdc to +/-2.5Vdc). Differential inputs are configurable by software. There are two additional internal inputs: power supply voltage on POWER input and atmospheric pressure input measured with on board pressure sensor. After defining polynomial coefficients of the 3-rd order measured value (in mV) is converted to engineering units.

Datalogger has one ground potential referenced to power supply GND. There are more

Equipment for pedology, hydrology, meteorology, research of plants and environmental diagnostics

connectors with GND potential – all are internally connected and allow comfortable connection of power sources, RS232 serial lines, analog and digital inputs.

Digital inputs can be configured for measuring frequency (in Hz), time (when digital input is in high logical state; in seconds) or as a counter (in counts). After defining polynomial coefficients of the 3-rd order it is converted to engineering units.

For calculation to engineering units there are available 16 polynomials for analog and digital inputs together.

$$\text{OutputValue} = a0 + a1 * \text{Input} + a2 * \text{Input}_2 + a3 * \text{Input}_3$$

Where $a0$, $a1$, $a2$, and $a3$ are coefficients of polynome

For sensors, which require current excitation, there is EXC jumper. It produces about 600uA excitation and is primary intended for current loops for PT100 sensors. Additionally, there is buffered Vref output (2.5Vdc) for potentiometric sensors. For communication with Solinst sensor, there is PWRSSENS output providing cca 5V excitation.

The main memory medium is SD memory card. WaterLoggerEWS can accept any card (SD or SDHC). If the user wants to remove the card, it is recommended to switch off datalogger first and wait until indication LEDs turn off. Then, file is correctly closed and card can be removed. It is possible to read it directly with card reader on PC. In the case the user will remove the card during ON position of the switch (but STATUS LED must be off), files on the card will remain, but the last file will be not correctly closed but still readable on the PC. It is not allowed to remove card from the slot if red LED is on! Files are stored in WATERLOG directory.

Serial line is RS232 with fixed 8 bit, none parity and 1 stop bit setting. Speed is software selectable from 300bps up to 115200bps. This line is used also as Service port - for setting configuration. By software commands the user can switch this line to RS485 mode. It is non isolated line due to low power consumption requirement. Software change from RS232 to RS485 will be applied only after turn off – turn on ON/OFF switch cycle or the user can enter Reset command. In OFF position serial line is set to RS232 always. RS485 mode is used to send data over longer lines. It is possible to enter Service mode and send some settings commands, but it is not possible to read file from SD card over this interface

There are various power supply options. Simple battery management (controlled charging and protection from deep discharge) is provided.

For minimum power consumption there is POWER input. It is connected directly before power stabilizer, without any charging or battery management option. Only PWROUT output is enabled. POWER input is used in systems where the smallest power consumption is expected and there is not available any charging source (neither wall adapter, nor solar panel...). Jumper BATT MNG must be removed.

If there is mains power supply available, it is recommended to use CHARGER input. It's input voltage range is from 7Vdc to 12Vdc. In this configuration, 12V lead acid battery can be connected to BATT terminal with power management. Jumper BAT MNG must be inserted.

Very similar input is for solar panels - SOLAR. It has the same features as CHARGER input. Maximum output current from solar panel is 2A. Jumper BAT MNG must be inserted.

Equipment for pedology, hydrology, meteorology, research of plants and environmental diagnostics

Battery management cares for deep discharge condition. If this happens, battery is disconnected. BATOUT output is available for powering sensor, which must be all time powered (like wind speed sensors or rain gauges).

Overall system operation is as follows: if main switch is in OFF position, only real time clock is running. All other tasks are disabled. If main switch is in ON position, full performance follows.

Every measurement is made at MeasInterval. It can be set in the range 1s to 24 hours with resolution to 1s. At that time physical measurements are performed on analog, digital and serial inputs. Then, at LogInterval all data are processed and saved to the memory. It can be set in the range 1s to 24 hours. For all inputs it is possible to measure average, minimum and maximum value. These statistical values are calculated at LogInterval. Between MeasInterval and LogInterval datalogger is in power save mode. For switching power supply for sensor (at output PWROUT) sometimes it is necessary to leave delay to stabilize output from sensors. For this purpose there is MeasDelay. It can be set in the range 0...60 seconds.

At LogInterval data are written to SD memory card. On the card every day one file is created. File is in text format and directly readable on PC. Format is described in software description.

20 of 61

Internal software has built in Early Warning System. This feature enables the user to setup various warning levels and up to 8 phone numbers where warning SMS messages will be sent. Each phone number can cover any or all of warnings. Detailed description of EWS operation is in the following chapter.

If there is GSM modem configured, at ModemInterval period, modem is powered on, attached to GSM/GPRS network and data are sent. Then, power is removed to save battery. ModemInterval is in the range 0...24 hours. If 0 is set, no modem data transfer is performed.

For the real time counting there is a clock battery. It is a lithium battery with 3V nominal voltage, type CR2032. Exchange is simple for the user. After change of the battery, it is necessary to set up correct time and date.

WaterLoggerEWS is designed with simplicity for the user. It is based on multitasking real time operating system, which ensures robustness. The main tasks are measuring, statistical processing, producing reports, Early Warning System task, data storage, serial ports communication, output control and real time clock calculation. During measuring, all selected inputs are measured and values are stored in a buffer. At LogInterval, analog measured data are converted to milivolts, digital measured data are converted to hertz, seconds or counts and further statistically processed for average value, minimum and maximum value (if configured). Finally, calculation to engineering units is performed with polynomial of the 3-rd order. Next step is data saving to SD memory card and sending report to serial line. If modem is configured, further task follows: power supply for modem is turned on. After some delay, modem is ready and configured, then attached to GSM/GPRS network. If successfully attached to network, data transfer follows. If the data transfer is not successful for whatever reason, logger is trying 3 times to send them. After the third unsuccessful attempt, data are stored and will be sent on next ModemInterval. Once data are sent, modem is detached from network, powered down and task stopped (waiting for next ModemInterval period). At midnight time synchronization is performed.

With multitasking system, many of those tasks are performed in parallel.

Equipment for pedology, hydrology, meteorology, research of plants and environmental diagnostics

There are more modem settings for WaterLoggerEWS. Here is detailed description.

Standard operation of WaterLoggerEWS is that data will be sent to the user's email address on regular predefined intervals. It is possible to setup FTP data transfer. For correct connection to the internet there are several settings dependent on your local GSM/GPRS provider.

ModemPIN is a mandatory parameter. It is due to protection from misuse of the SIM card. The PIN number must be at least 4 digits and maximum 8 digits. If the PIN code is not set (and PIN code on SIM card is disabled), modem communication will fail.

APN is access point of your GSM/GPRS provider. It is a string parameter and user needs to make correct setting (please, ask your network provider). Predefined value is internet.

Sending emails can be done by two different ways: first one is with predefined settings and second with user own settings.

Predefined settings uses smtp server **smtp.envirodata.eu** (IP address) with authorization (UserName **input@envirodata.eu** and Password **ubxC74dqT5**). It is the best way for fast testing of communication and is accessible worldwide. The disadvantage for the user is that account is not in his control. The manufacturer will make his best effort to keep this account working unlimited time, but cannot guarantee that.

User own settings require valid email account. Then IP address should be set to smtp server of that account. Smtip server may not require secure connection or secure authentication. Many GSM/GPRS providers offer access to their smtp servers. Please, check for compatibility. In some cases smtp server does not require authentication. Then in settings leave fields UserName and Password blank. (At the time of manufacturer testing there was created email account at smtp.mail.yahoo.com and with properly set UserName and Password correct email data were sent. This can change in time.) The advantage of user own settings is that user has full control on functionality of email account for the future.

For sending data to FTP server, it is necessary to setup IP address of the FTP server and set correct UserName and Password for FTP access. FTP server can be in number dot format or text address. Also, user rights on the server must be set correctly (to allow to write a file). In this case other email settings are ignored.

For remote service it is valuable feature that the user can call WaterLoggerEWS for service purpose (change LogInterval, ModemInterval, ...). ModemOnTime is the time, when modem will register to the GSM network and will wait for service call. ModemOnDuration is time duration in minutes how long WaterLoggerEWS will wait for service call. It must be understood that during this time power consumption is increased and battery life will be shorter. Recommended it is 5-10 minutes. For this feature SIM card must be able to receive CSD calls. Please, check with your GSM/GPRS provider availability of this feature.

Instruments in the field tend to have real time clock shift (due to temperature change and basic inaccuracy of clock source). For this reason WaterLoggerEWS has automatic time synchronization every midnight. (ModemInterval must be greater than zero). This is TimeServer setting. Time is synchronized from port 123, which is for network time protocol. The user can setup whatever time server. Examples are time.nist.gov, time.windows.com...

The following diagrams show typical connection of various power supply options.

Equipment for pedology, hydrology, meteorology, research of plants and environmental diagnostics

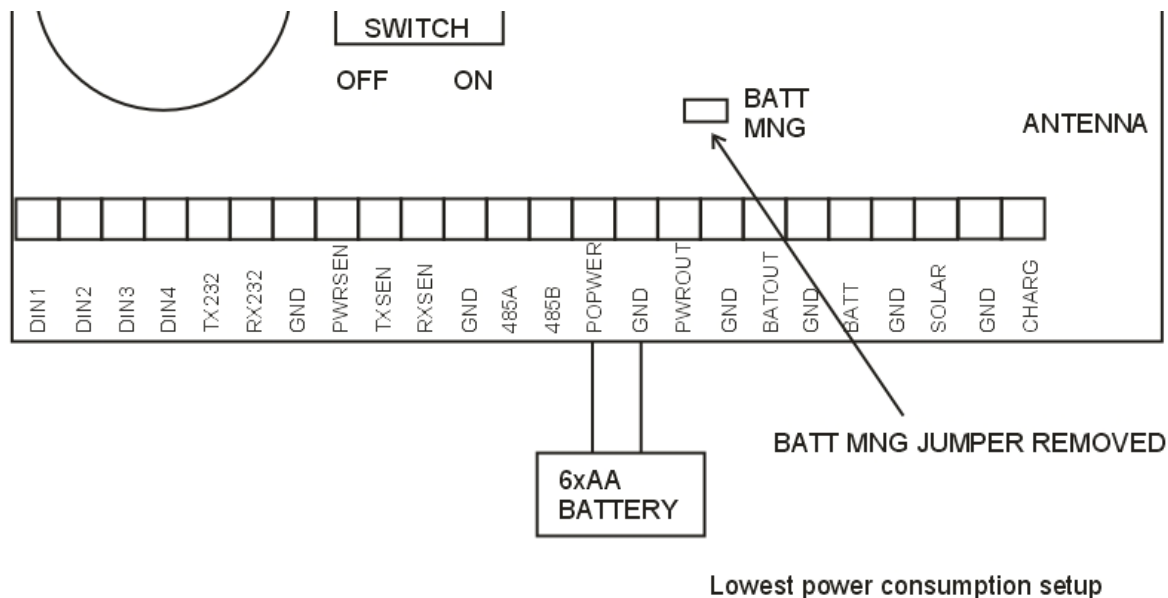


Fig 12 Connecting battery with lowest power consumption option

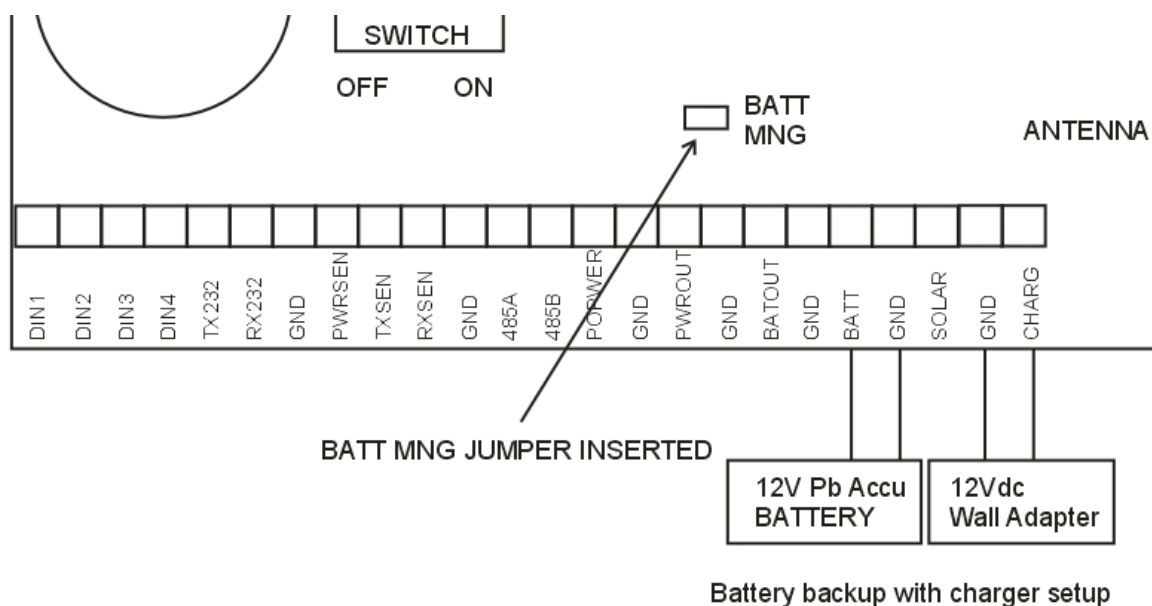


Fig 13 Connection wall adapter with 12V Pb accu and power management

Equipment for pedology, hydrology, meteorology, research of plants and environmental diagnostics

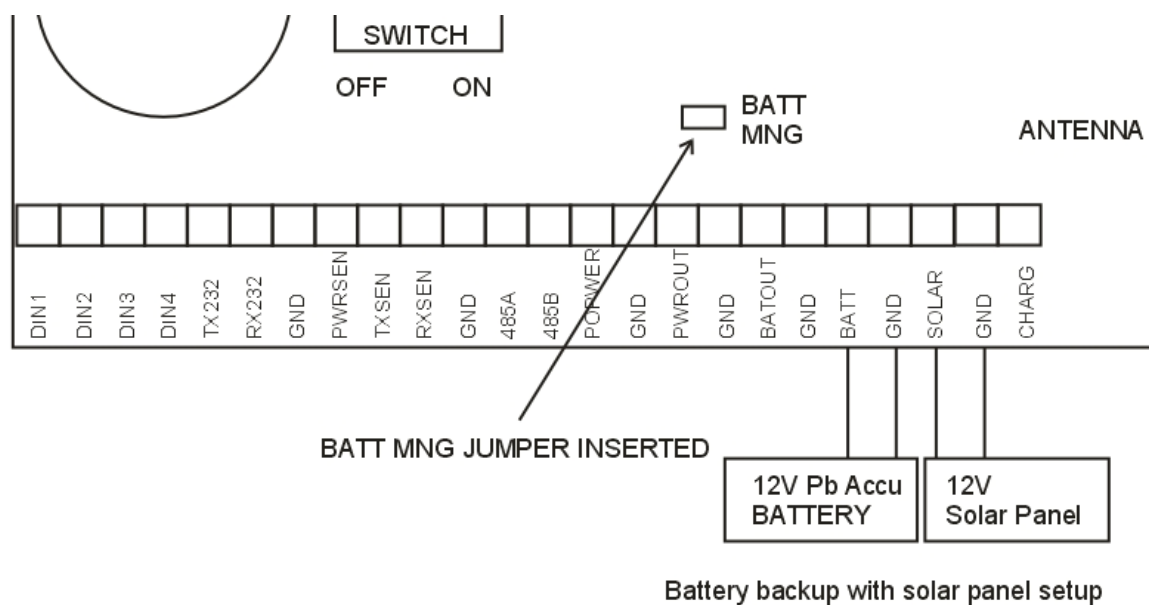


Fig 14 Connection solar panel with 12V Pb accu and power management

Equipment for pedology, hydrology, meteorology, research of plants and environmental diagnostics

6. Early warning system

Above all functionality of basic datalogger, WaterLoggerEWS can provide powerful Early Warning System feature. If measured value (primary water level) is over the user predefined threshold levels, datalogger will start to immediately send data and SMS messages over GSM/GPRS network. There are three types of warnings: level, delta (dynamic change) and low battery. Up to eight phone numbers can be defined for SMS recipients.

Input Sources

mapping is as follows:

- AIN4 (LevelUS) ultrasonic analog output water level sensor
- AIN6 (Levl485) digital RS485 water level sensor (for the future enhancement)
- AIN13 (Level1) digital Solinst water level sensor
- DIN1 (RG) rain gauge sensor

If EWS is configured for active operation, these inputs are mapped to AIN5 (EWS). This virtual input channel is used for warning calculations. All inputs are simply copied from original source except AIN13 (Level1). This sensor needs atmospheric pressure compensation. It is measured on AIN7 (Pa) and is subtracted from AIN13 (Level1) and then copied to AIN5 (EWS). Polynomials are applied first to source inputs.

As the source for the AIN5 (EWS) can be only one, there is priority applied as follows:

1. AIN4 (LevelUS) ultrasonic analog water level sensor
2. AIN6 (Levl485) digital RS485 water level sensor
3. AIN13 (Level1) digital Solinst water level sensor
4. DIN1 (RG) rain gauge sensor

The software will use for AIN5 (EWS) the highest priority input configured for logging.

Level Warnings

The user can setup up to 4 levels of warnings. They are named Level1 to Level4. It is necessary to set correct values according to local conditions, which will comply with the following rule:

$$\text{Level1} < \text{Level2} < \text{Level3} < \text{Level4}$$

Equipment for pedology, hydrology, meteorology, research of plants and environmental diagnostics

Detailed operation is shown on the following picture.

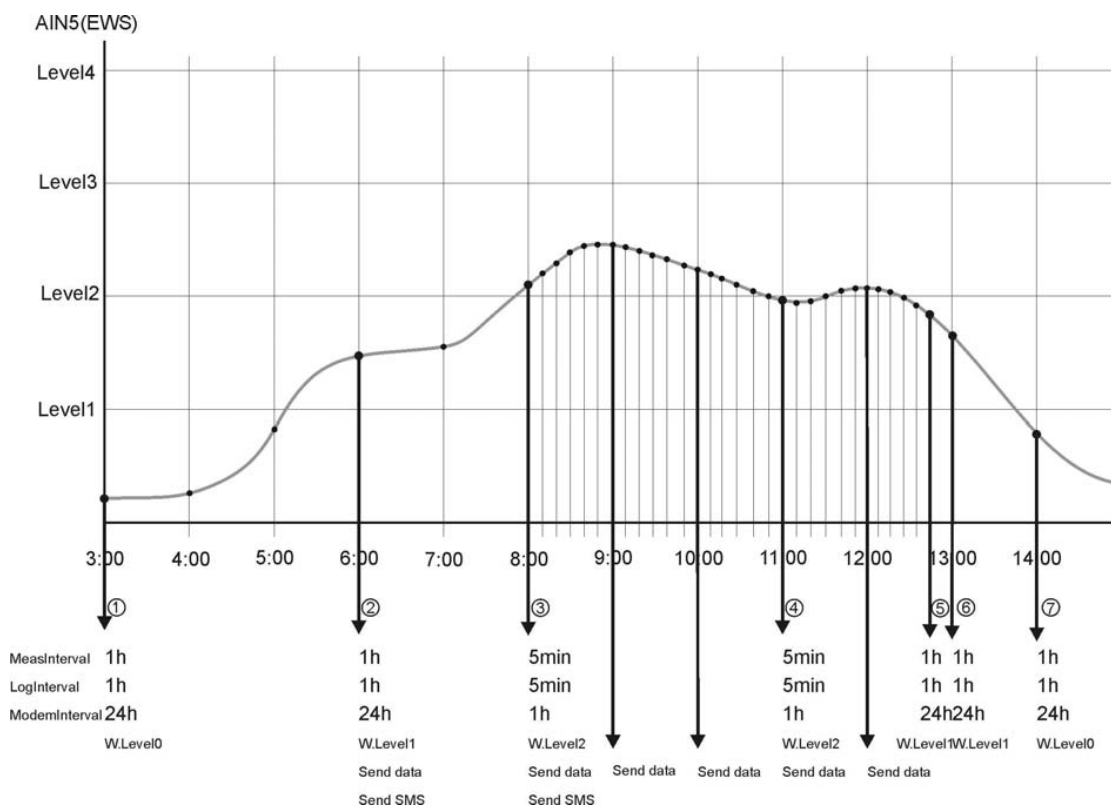


Fig 15 Level Warning operation

Assume typical setup:
 MeasInterval 1 hour
 LogInterval 1 hour
 ModemInterval 24 hour

1. At 1 hour interval measurements and logging are performed. EWS is below Level1, so, no warnings are generated
2. At 6:00 EWS value is over Level1. Even ModemInterval is set to 24 hours, all previous (since last sent) data are sent over GPRS modem and warning SMS messages are sent to phone numbers specified. Warning Level 1 is generated. Both MeasInterval and LogInterval are 1 hour.
3. At 8:00 EWS value is over Level2. Warning Level 2 is generated. From this level MeasInterval and LogInterval are shortened to 5 minutes and ModemInterval is shortened to 1 hour. All data since 6:00 are sent over GPRS modem and warning SMS messages are sent to phone numbers specified for Level2. On the picture 5 minutes interval is not to scale.
 At 9:00 data will be sent over GPRS modem.
 At 10:00 data will be sent over GPRS modem.

Equipment for pedology, hydrology, meteorology, research of plants and environmental diagnostics

4. At 10:55, 11:00...11:30 EWS value is lower then Level2. Since there is hysteresis built in, still warning Level2 is active. The hysteresis is 5% of difference between Level2 and Level1. This rule applies to all levels.
At 11:00 data will be sent over GPRS modem.
At 12:00 data will be sent over GPRS modem.
5. At 12:50 EWS value is under Level2. The difference is more than 5% hysteresis. Therefore warning Level1 is active and MeasInterval, LogInterval will return to original settings (1 hour) and ModemInterval will return to original setting (24 hour).
6. At 13:00 EWS level is still above Level1, so, warning Level1 si still active.
7. At 14:00 EWS level is below 5% hysteresis of Level1, so, there is no more any level warnings. Next data transfer will be at midnight (ModemInterval 24 hours).

Delta Warnings

Delta warning is generated when difference of two consecutive values of EWS are higher than user defined value. As MeasInterval can vary delta warning is always recalculated to 1 hour interval. Delta warning has no hysteresis as level warning and whenever generated (regardless of other warnings) it will send data over GPRS modem and SMS messages to predefined users.

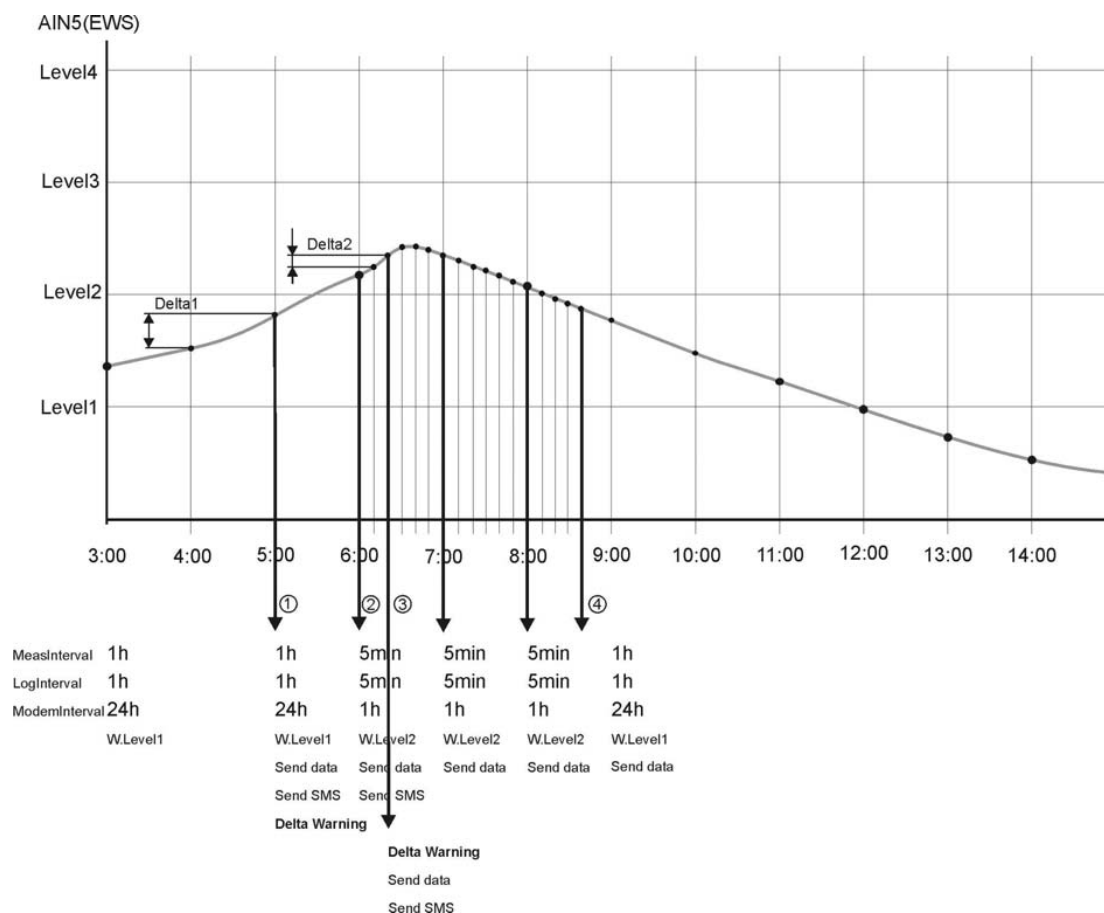


Fig 16 Delta Warning operation

Equipment for pedology, hydrology, meteorology, research of plants and environmental diagnostics

Description of operation from the picture

1. at 5:00 measured value from AIN5 (EWS) is compared with previous value measured at 4:00 (Delta1). As MeasInterval is 1 hour and this value is larger than predefined DeltaWarning value, data and SMS are sent to predefined numbers.
2. at 6:00 AIN5 (EWS) is over Level2 and therefore Level Warning 2 is reached. MeasInterval and LogInterval is changed to 5 minutes, ModemInterval is changed to 1 hour. As there is new Level Warning 2, data and SMS are sent to predefined numbers.
3. at 6:20 new measured value on AIN5 (EWS) is compared to value measured at 6:15 (Delta2). It is recalculated to 1 hour interval. As it is larger than Delta Warning, second Delta Warning is generated; data and SMS are sent to predefined numbers. From that time delta is lower than Delta Warning, so no more Delta Warnings are generated. Still MeasInterval and LogInterval are 5 minutes and ModemInterval is 1hour. At 7:00 data are sent over GPRS network. At 8:00 data are sent over GPRS network.
4. at 8:45 AIN5 (EWS) is under Level2 over the hysteresis. Warning is lowered to Level1 and MeasInterval, LogInterval and ModemInterval are changed to originally set values.

LOW BATT Warning

Whenever measurement is started, if AIN8 (Vbatt) is configured for logging, EWS will control Battery voltage. If it is lower then predefined value, LOW BATT warning will be generated. Data will be sent over GPRS modem and SMS message will be sent to predefined users. During LowBatt Warning SMS messages are sent every 24 hours.

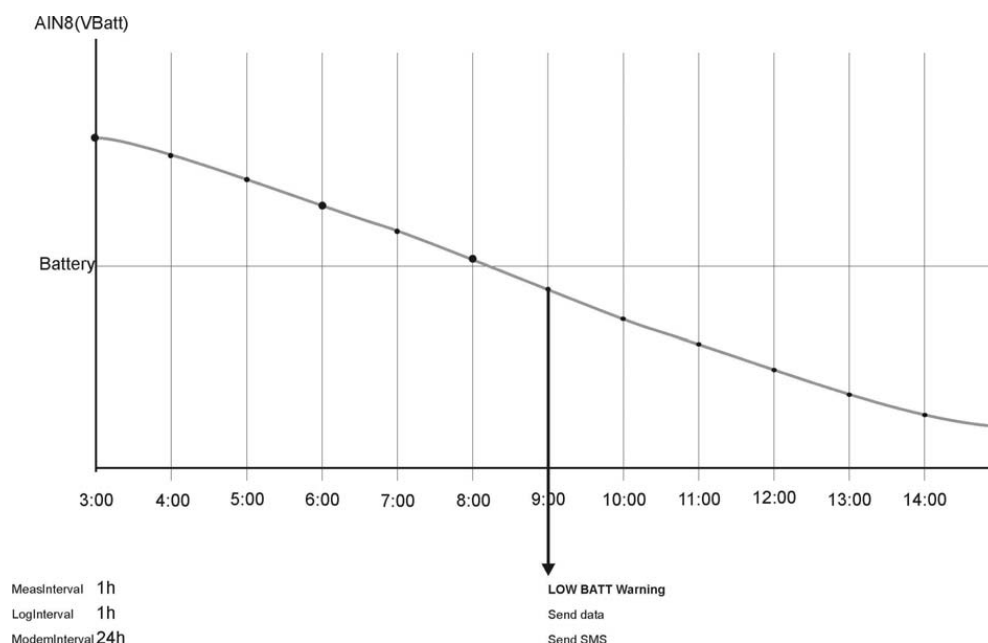


Fig 17 LOW BATT Warning operation

Equipment for pedology, hydrology, meteorology, research of plants and environmental diagnostics

Description of the operation from the picture:

At regular LogInterval on AIN8 (Vbatt) was detected LowBatt Warning. Data and SMS are generated. As the measured Vbatt is still under the Battery Level, this warning is still active. But next SMS will be sent after 24 hours.

SMS Message Format

SMS message is composed of several fields. Some of them are generated by the software and some of them are user defined. In the following table there is description of each field.

Nr..	Field name	Origin	Example	Description
1	Text1	User	Warning System	Identification of SMS message type.
2	Name	EWS	Vltava River	Name of WaterLoggerEWS
3	Text2	User	Warning Level	Identification of Warning Level
4	Warning#	EWS	2	Actual Warning Level
5	WaterLevel	EWS	450.35	Actual measured WaterLevel (EWS)
6	Units	User	cm	Identification of units
7	Delta	User	change	Identification of Delta Warning
8	Delta Level	EWS	5.12 cm/h	Actual Delta Warning Delta.
9	LOW BATT	EWS	LOW BATT	Identification of Low Battery
10	Vbatt Level	EWS	11.4V	Actual value of battery voltage
11	Date	EWS	10.6.2012	Date of creating SMS
12	Time	EWS	18:35	Time of creating SMS

There are several examples of SMS messages types:

Example: LevelWaring

Warning System
Vltava River
Warning Level 2
450.35cm
10.6.2012 18:35

18.8.2012 19:00

Example: Delta Warning

EWS
Prague
Warning# 0
Level 11.2cm
Delta 78.45cm/h

Example: LOW BATT Warning

Prevention System
Prague Test
Warning# 0
Level 11.2cm
LOW BATT
10.87V

Equipment for pedology, hydrology, meteorology, research of plants and environmental diagnostics

18.8.2012 19:00

7. Software

For setting configuration to WaterLoggerEWS, it is necessary to connect serial cable to Serial line and PC. On PC you need to use terminal software (can be Hyperterminal) with the following settings: 8 bit, none parity, 1 stop bit, no handshaking and speed according to actual setting on the datalogger (default value is 115200bps). Then type command "Service" (all commands are case sensitive)

You will receive the following answer from the WaterLoggerEWS:

WaterLogEWS (C) Physicus. Version 3.0 Jun 2 2012
Service mode started

Now all setup commands are available.

Summary of setup commands:

a x, L=y, N=y, X=y, V=y, G=y, U=y, R=y, P=y, A=s

where:

a x [1...5, 7...16] – analog input number

L=y [0,1] – if L=1 logging mean value

N=y [0,1] – if N=1, minimum value calculated, otherwise not calculated

X=y [0,1] – if X=1, maximum value calculated, otherwise not calculated

V=y [0,1] – if V=1, vector calculation for a1...a4 (for wind direction measurements), otherwise scalar calculation

G=y [1...8] – gain for differential inputs (a 9 ... a 12)

U=y [0,1] – unipolar setting (U=1) or bipolar setting (U=0) for differential inputs (a 9 ... a 11)

R=y [0,1] – calculating ratio to a9 for inputs a10 ... a12

P=y [1...16] – polynome for calculation to engineering units

A= s – alias for analog input (max 7 characters)

Example

a 1, L=1, X=1, V=0, P=2, A=RH

(analog input 1 is configured for logging mean scalar value, logging maximum value and polynomial for engineering units calculation is P2. Alias for this input is RH)

Command format for configuring digital inputs:

Equipment for pedology, hydrology, meteorology, research of plants and environmental diagnostics

d x, L=y, N=y, X=y, F=y, T=y, C=y, P=y, A=s

where:

d x [1...4] – digital input number

L=y [0,1] – if L=1 logging mean value

N=y [0,1] – if L=1, minimum value calculated, otherwise not calculated

X=y [0,1] – if L=1, maximum value calculated, otherwise not calculated

F=1 – frequency measurement

T=1 – time measurement

C=1 – counter

P=y [1...16] – polynomial for calculation to engineering units

A= s – alias for digital input (max 7 characters)

example

d 1, L=1, X=1, N=1, C=1, P=6, A=RG

(digital input 1 is configured for logging average value minimum and maximum values, input is counter and polynomial for engineering units calculation is P6. Alias for this input is RG)

Command format for configuring polynomials:

p x, 0=a, 1=a, 2=a, 3=a

where:

p x [1...16] polynomial number

0=a, coefficient a0

1=a, coefficient a1

2=a, coefficient a2

3=a, coefficient a3

example

p 2, 0=-0.035, 1=0.1, 2=0, 3=0

(coefficients to polynomials are: a = -0.035, b = 0.1, c = 0, d = 0)

Command format for system settings:

MeasInterval [1...86400] – interval between measurements in seconds

example

MeasInterval 3600

(configuring measuring interval to 1 hour)

!!! If you use Solinst sensor please set this interval to value higher than 600 s. If measuring interval is set to value lower than 600 s battery life of the Solinst sensor will be greatly reduced !!!

Equipment for pedology, hydrology, meteorology, research of plants and environmental diagnostics

MeasDelay [0...60] – delay after MeasInterval to start measurements in seconds

example

MeasDelay 5

(configuring delay between beginning of measuring interval and actual measurement to 5 seconds)

LogInterval [0...86400] – interval between logging in seconds

example

LogInterval 3600

(configuring logging interval to 1 hour)

Vref [2450...2550] – set reference voltage

example

Vref 2500.3

(setting reference voltage to 2500.3mV)

Serial1 [300,1200,2400,9600,19200,38400,57600,115200] – set communication speed on Serial1 (service port)

example

Serial1 9600

(setting Serial1 baud rate to 9600 bps)

Date dd.mm.yyyy – set current date – day.month.year

example

Date 10.1.2009

(setting date to 10.1.2009)

Time hh:mm:ss – set current time - hours: minutes: seconds

example

Time 10:30:45

(setting time to 10:30:45)

Command format for modem settings:

ModemInterval [0 ... 24] – interval between sending data over modem in hours. Parameter 0 means no modem sending.

example

ModemInterval 24

(configuring modem data transfer to every 24 hours)

ModemDelay [0 ... 1439] – delay after ModemInterval to start sending data.

example

ModemDelay 5

Equipment for pedology, hydrology, meteorology, research of plants and environmental diagnostics

(configuring modem delay to 5 minutes)

ModemOnTime [hh:mm:ss] – time at which modem should connect to GSM network and waits for a call

example

ModemOnTime 09:00:00

ModemOnDuration [0...30] – interval how long modem will wait connected to GSM network for a call; in minutes.

example

ModemOnDuration 30

ModemPIN [number] – modem PIN number (max 10 digits)

example

ModemPIN 485351

(configuring PIN number of inserted SIM card into the GSM modem to 485351)

ModemNumber [number] – number of remote modem where GSM data will be transferred (if ModemGPRS 0 was set)

example

ModemNumber 0265428834

APN [string]– access point of GSM/GPRS provider

example

APN internet

(configuring APN to string **internet**)

IP [string]– IP address for sending emails or IP address of FTP server

example

IP smtp.envirodata.eu

(configuring IP to **smtp.envirodata.eu**)

EmailFrom [string]– sender address for the email

example

EmailFrom JanNovak@email.cz

(configuring sender address to **JanNovak@email.cz**)

EmailTo [string]– recipient address for the email. Here data will be received.

example

EmailTo inputdata@envirodata.eu

(configuring recipient address to **inputdata@envirodata.eu**)

UserName [string]– user name for authorization on smtp server or FTP server. Minimum 5

Equipment for pedology, hydrology, meteorology, research of plants and environmental diagnostics

characters. If less than 5 characters are used, access without authorization is activated (UserName and Password are not used)

example

UserName MeasSender20

(configuring user name to **MeasSender20**)

Password [string]– password for authorization on smtp server or FTP server. Minimum 4 characters.

If less than 4 characters are used, access without authorization is activated

example

Password ubxC74dqT5

(configuring password to **ubxC74dqT5**)

TimeServer [string]– time server for time synchronization.

example

TimeServer time.nist.gov

(configuring time server to time.nist.gov)

TimeZone [-12...12]– local time zone.

example

TimeZone -5

(configuring time zone to -5 hours from TimeServer)

Ftp [0/1]- disable/enable FTP data transfer.

example

Ftp 0

(configuring data transfer to email)

Command format for Early Warning System settings:

SmsCenter [+number] – sms center of GSM/GPRS provider. Format must be in international code format (starting +, country code, following numbers without space, dash or other characters).

example

SmsCenter +420602909909

(configuring SmsCenter to +420602909909)

EWS [0/1] – turn off/on Early Warning System.

example

EWS 1

(configuring Early Warning System to be active)

SmsNumber [1..8] [+number] – setting up to 8 SMS numbers for recipients. Number is in international code format.

Equipment for pedology, hydrology, meteorology, research of plants and environmental diagnostics

example

SmsNumber 2 +420123456789

(configuring SMS number 2 to +420123456789)

WaterLevel [1..4] [float] b[xxxxxxx] – setting Level Warning level. Warning Level is in range 1..4, float is Water Level for this warning and xxxxxxxx represents zeros or ones to 34 of 61 which SMS numbers will be sent. Please, keep rules about values described in previous Early Warning System chapter.

example

WaterLevel 1 100.2 b00000001

(configuring Warning Level 1 to 100.2 and this warning will be sent only to SMS number 1)

example

WaterLevel 3 150 b11100000

(configuring Warning Level 3 to 150 and this warning will be sent to SMS number 8, SMS number 7 and SMS number 6)

DeltaLevel [float] b[xxxxxxx] – setting Delta Warning level. Float is Delta Level for this warning calculated to 1 hour period. Finally xxxxxxxx represents zeros or ones to which SMS numbers will be warning sent. If float is zero, this warning is ignored.

example

DeltaLevel 30.14 b00000100

(configuring Delta Level to 31.14 and this warning will be sent only to SMS number 3)

BatWarning [float] b[xxxxxxx] – setting LOW BATT Warning level. Float is Vbatt Level for this warning. Finally xxxxxxxx represents zeros or ones to which SMS numbers will be warning sent.

example

BatWarning 11.5 b00001000

(configuring LOW BATT Level to 11.5V and this warning will be sent only to SMS number 4)

SmsText [1..4] [text] – setting particular texts in SMS message.

example

SmsText 3 cm

(configuring Unit text in SMS message to cm)

EarlyWarning? – reading full setting of Early Warning System settings

example

EarlyWarning?

SmsNumber 1 +421905123456

SmsNumber 2

SmsNumber 3

SmsNumber 4

SmsNumber 5

SmsNumber 6

Equipment for pedology, hydrology, meteorology, research of plants and environmental diagnostics

SmsNumber 7 +421911456789

SmsNumber 8

WaterLevel 1 10.35 b00000001

WaterLevel 2 20 b00000001

WaterLevel 3 25.5 b01000000

WaterLevel 4 32.5 b01000001

DeltaLevel 1.2 b01000000

35 of 61

BatWarning 11.5 b00000001

SmsText1 Warning System

SmsText2 Level#

SmsText3 cm

SmsText4 Delta

OK

Other commands:

? – displays current settings

example

?

<i>SN</i>	<i>002/0211</i>
<i>Name</i>	<i>TestingBratislava</i>
<i>MeasInterval</i>	<i>5 sec</i>
<i>MeasDelay</i>	<i>0 sec</i>
<i>RepInterval</i>	<i>0 sec</i>
<i>LogInterval</i>	<i>10 sec</i>
<i>Vref</i>	<i>2498.650 mV</i>
<i>Serial1</i>	<i>115200 bps</i>
<i>Serial2</i>	<i>115200 bps</i>
<i>RS485</i>	<i>0</i>
<i>EWS</i>	<i>1</i>
<i>Date</i>	<i>01.02.2011</i>
<i>Time</i>	<i>08:12:26</i>
<i>OK</i>	

Config? – displays current inputs and polynomials settings

example

Config?

a 1, L=0, N=0, X=0, V=0, P=1, A=RH

a 2, L=0, N=0, X=0, V=0, P=1, A= TA

Equipment for pedology, hydrology, meteorology, research of plants and environmental diagnostics

a 3, L=0, N=0, X=0, V=0, P=1, A=
a 4, L=0, N=0, X=0, V=0, P=1, A=LevelUS
a 5, L=0, N=0, X=0, V=0, P=1, A=EWS
a 6, L=0, N=0, X=0, V=0, P=1, A=
a 7, L=1, N=0, X=0, V=0, P=1, A=Pa
a 8, L=1, N=0, X=0, V=0, P=1, A=Vbatt
a 9, L=0, N=0, X=0, G=8, U=0, R=0, P=2, A=
a 10, L=0, N=0, X=0, G=8, U=0, R=0, P=2, A=
a 11, L=0, N=0, X=0, G=8, U=0, R=0, P=2, A=
a 12, L=0, N=0, X=0, G=8, U=0, R=0, P=2, A=
a 13, L=0, N=0, X=0, G=8, U=0, R=0, P=2, A=LevlSol
a 14, L=0, N=0, X=0, G=8, U=0, R=0, P=2, A=TempSol
a 15, L=0, N=0, X=0, G=8, U=0, R=0, P=2, A=CondSol
a 16, L=0, N=0, X=0, G=8, U=0, R=0, P=2, A=BattSol
a 17, L=0, N=0, X=0, G=8, U=0, R=0, P=2, A=
 36 of 61
a 18, L=0, N=0, X=0, G=8, U=0, R=0, P=2, A=
a 19, L=0, N=0, X=0, G=8, U=0, R=0, P=2, A=
a 20, L=0, N=0, X=0, G=8, U=0, R=0, P=2, A=
d 1, L=0, N=0, X=0, F=1, P=1, A=RG
d 2, L=0, N=0, X=0, T=1, P=1, A=
d 3, L=0, N=0, X=0, F=1, P=1, A=
d 4, L=0, N=0, X=0, T=1, P=1, A=
d 5, L=0, N=0, X=0, T=1, P=1, A=
d 6, L=0, N=0, X=0, T=1, P=1, A=
d 7, L=0, N=0, X=0, T=1, P=1, A=
d 8, L=0, N=0, X=0, T=1, P=1, A=
d 9, L=0, N=0, X=0, T=1, P=1, A=
d 10, L=0, N=0, X=0, T=1, P=1, A=
d 11, L=0, N=0, X=0, F=1, P=1, A=
d 12, L=0, N=0, X=0, F=1, P=1, A=
p 1, 0=0, 1=1, 2=0, 3=0
p 2, 0=0, 1=1000, 2=0, 3=0
p 3, 0=-246, 1=2.362, 2=0.0009813, 3=0
p 4, 0=0, 1=0, 2=0, 3=0
p 5, 0=0, 1=0, 2=0, 3=0
p 6, 0=0, 1=0, 2=0, 3=0
p 7, 0=0, 1=0, 2=0, 3=0
p 8, 0=0, 1=0, 2=0, 3=0
p 9, 0=0, 1=0, 2=0, 3=0
p 10, 0=0, 1=0, 2=0, 3=0
p 11, 0=0, 1=0, 2=0, 3=0
p 12, 0=0, 1=0, 2=0, 3=0
p 13, 0=0, 1=0, 2=0, 3=0
p 14, 0=0, 1=0, 2=0, 3=0

Equipment for pedology, hydrology, meteorology, research of plants and environmental diagnostics

p 15, 0=0, 1=0, 2=0, 3=0

p 16, 0=0, 1=0, 2=0, 3=0

OK

Modem? – displays modem settings

example

Modem?

ModemInterval 0 hr

ModemDelay 0 min

ModemOnTime 14:00:00

ModemOnDuration 40 min

ModemPIN 1234

ModemNumber 0265428834

APN internet internet

IP smtp.envirodata.eu

EmailFrom JanNovak@email.cz

EmailTo inputdata@envirodata.eu

UserName MeasSender20

Password ubxC74dqT5

TimeServer time.nist.gov

TimeZone 0

Ftp 0

SmsCenter +421905303303

OK

SaveConfig – saves current settings to nonvolatile memory

example

SaveConfig

LogVariables – displays all logged variables as they appear in log files

example

LogVariables

(A1) WD1 Avg;

(A10) PT100 Avg;

(D1) WS1 Avg;

(D3) WS3 Avg;

OK

ReadData [1...200] – reads last 1...200 records from memory.

example

ReadData 5

Searching data...

Current Write Flash page 10

16.07.2009 12:09:00 264.887 239.766 267.539 7.702 55.770 0.000 600.366 0

.061 13.743 0.320 0.000 161.728 0.029 258.572 0.078 258.574 0.079

Equipment for pedology, hydrology, meteorology, research of plants and environmental diagnostics

16.07.2009 13:00:00 267.189 267.188 267.539 0.018 54.427 1.252 600.366 0
.051 13.753 0.320 0.000 161.728 0.028 258.573 0.078 258.573 0.078
16.07.2009 14:00:00 267.190 267.188 267.539 0.028 53.390 1.010 600.366 0
.026 13.758 0.320 0.000 161.728 0.028 258.573 0.078 258.573 0.078
16.07.2009 15:00:00 267.192 267.188 267.539 0.040 54.976 0.113 600.366 0
.055 13.748 0.320 0.000 161.728 0.028 258.573 0.078 258.573 0.078
16.07.2009 16:00:00 267.188 267.188 267.539 0.012 55.465 0.103 600.366 0
.058 13.758 0.320 0.000 161.728 0.028 258.573 0.078 258.573 0.078

ActualData – displays actual data from measured inputs

example

ActualData

(A1) HUMIAIR 34.183

(A8) Vbatt 20.053

(A9) Ref100 100.000

(A10) PT100 22.344

(D1) Rain 0.000

(D2) Wspeed 1.320

(D4) SD 0.000

OK

SD? /waterlogger – displays all data files in /waterlog directory on SD memory card

example

SD? waterlogger

Directory listing...

<dir> .

<dir> ..

WLOG0000.TXT 26 2000/01/01 00:00

WLOG0001.TXT 158 2000/01/01 00:00

WLOG0002.TXT 389 2000/05/13 11:56

WLOG0003.TXT 643 2000/05/13 11:56

WLOG0004.TXT 389 2000/05/12 08:00

Total Space 497888 kB

Free Space 495808 kB

Actual File WLOG0005.TXT

OK

RS485 [0...1] – configures if using RS485 port

example

RS485 1

ReadFile /waterlogger/wlog0001.txt – displays requested file saved on SD memory card

example

ReadFile /waterlogger/wlog0040.txt

#Name WaterLogEWS

Equipment for pedology, hydrology, meteorology, research of plants and environmental diagnostics

#SN 001/0611

#{A1)HUMIAIR Avg;

#{A8) Vbatt Avg;

#{A9) Ref100 Avg;

#{A10) PT100 Avg;

#{D1) Rain Avg;

#{D2) Wspeed Avg;

21.02.2010 06:06:00 0.183 20.053 100.000 -5.480 0.000 0.320

21.02.2010 06:07:00 0.183 20.053 100.000 26.270 0.000 0.320

21.02.2010 06:08:00 0.193 20.053 100.000 45.238 0.000 0.320

21.02.2010 06:09:00 0.183 20.053 100.000 22.355 0.000 0.320

21.02.2010 06:10:00 0.183 20.053 100.000 38.935 0.000 0.320

21.02.2010 06:11:00 0.193 20.053 100.000 34.128 0.000 0.320

21.02.2010 06:12:00 0.193 20.053 100.000 69.841 0.000 0.320

21.02.2010 06:13:00 0.183 20.053 100.000 49.170 0.000 0.320

21.02.2010 06:14:00 0.193 20.053 100.000 35.775 0.000 0.320

OK

ReadConfig – reads current settings from nonvolatile memory

example

ReadConfig

Help – displays short help screen

example

Help

setup commands

a 1..20, Log, miN, maX, Stddev, Vector, Gain, Unipolar, Polynom, Ratio, Alias

d 1..12, Log, miN, maX, Stddev, Polynom, Alias

p 1..16, 0..3=

Vref [mV]

date 1.2.2011

time 11:45:20

MeasInterval [sec]

MeasDelay [sec]

LogInterval [sec]

RepInterval [sec]

ModemInterval [hr]

ModemDelay [min]

ModemOnTime [09:00:00]

ModemOnDuration [min]

ModemPIN

ModemNumber

EmailFrom

EmailTo

Equipment for pedology, hydrology, meteorology, research of plants and environmental diagnostics

UserName
Password
TimeServer
TimeZone
Ftp 0/1
EWS 0/1
SaveConfig - save configuration to Flash
ReadConfig - read configuration from Flash
? - shows actual settings
Modem? - shows actual modem settings
Config? - shows actual configuration
SD? /waterlog - show actual files on SD card
Serial 300, 1200, 2400, 9600, 19200, 38400, 57600, 115200bps
RS485 0/1
LogVariables - show all logged variables with names
ReadData 10 – read last 10 records
ActualData - show actual measured data
ReadFile /waterlog/wlog0001.txt - read file from SD card
TestGprs
Upgrade - upgrade firmware
Service - enter service mode
Exit - exit from service mode
Reset - reboot datalogger
OK

Exit – exit from Service mode

Reset – software reset of WaterLoggerEWS

Upgrade – starts upgrade procedure for firmware. Follow WaterLogger messages.

Equipment for pedology, hydrology, meteorology, research of plants and environmental diagnostics

8. PC configuration software

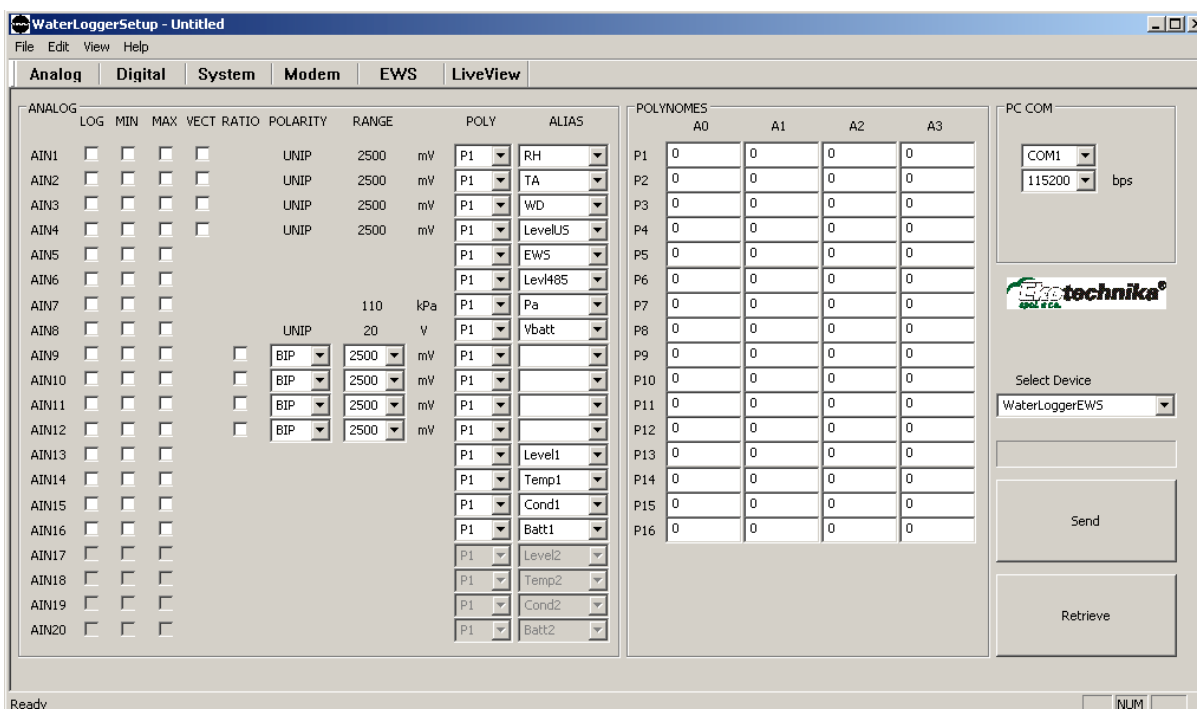
PC Configuration software is designed for user who wants to make his/her own configurations. It is very intuitive for use and the user can make full configuration in just a few minutes. WaterLoggerSetup software is simple executable file, without any need for further installation, compatible with Win9x, Win2000, WinXP and Win7 operating systems. This software can be used to setup either WaterLoggerGMS or WaterLogger12 dataloggers.

First of all it is necessary to copy WaterLoggerSetup.exe and sensor.ini files on to your computer. Open supplied CD in window. Select both files (WaterLoggerSetup.exe and sensor.ini). Select the location on your local computer where you want to save WaterLogger files and copy them there. There is no need for further installation. For maximum comfort it is possible to create shortcut on your desktop. (click right mouse button on WaterLoggerSetup.exe and drag to the desktop. Then release button and select Create Shortcuts Here option.

Double click on the shortcut will start the software.

NOTE: it is recommended to turn off datalogger during setup. During communication with serial Solinst sensor, datalogger will not responde.

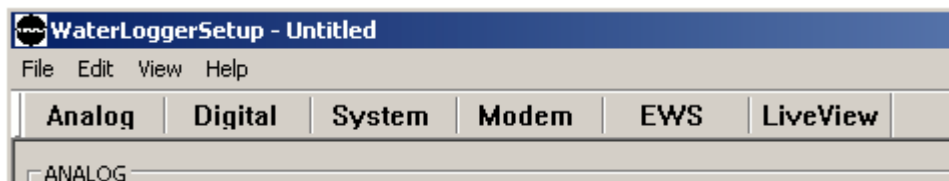
After starting the software, following screen will appear.



Please, note that all configuration screens are divided into 6 main sections Analog, Digital, System, Modem, EWS and LiveView. The user can switch between them by clicking

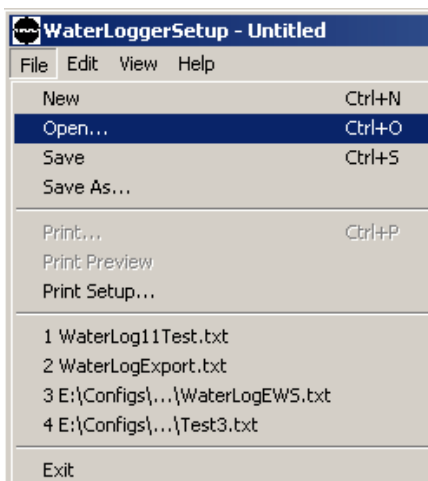
Equipment for pedology, hydrology, meteorology, research of plants and environmental diagnostics

on appropriate button.



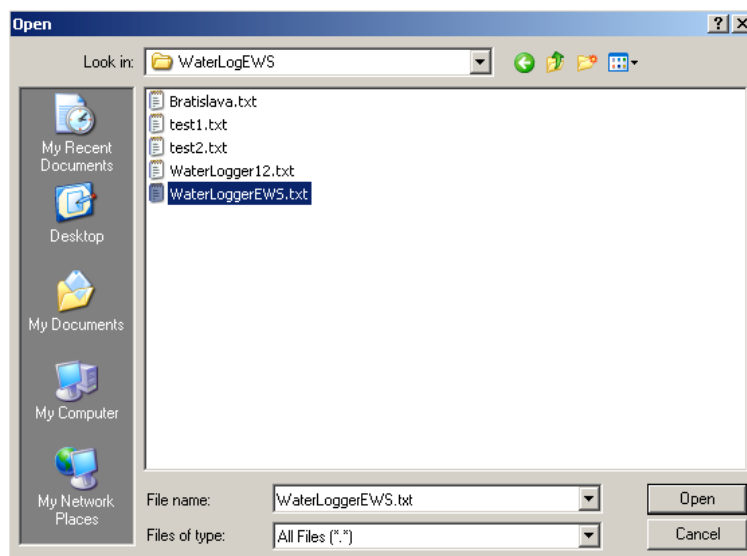
The user can create new configuration, save it to the disk or read already saved configuration from disk. This way it is easy to archive individual configurations for variol stations. Software can send created (red) configuration to datalogger or read actual configuration from datalogger.

The simplest task is to open an existing configuration. Navigate to File/Open



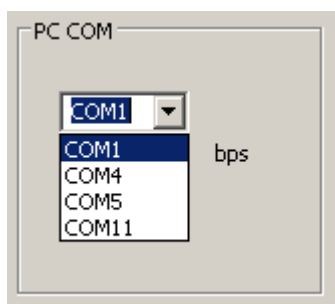
Equipment for pedology, hydrology, meteorology, research of plants and environmental diagnostics

and standard dialog will appear for selecting required configuration file.



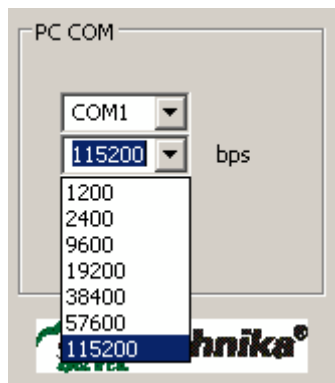
In the case of saving actual configuration, navigate to File/Save or File/SaveAs. If new configuration is to be created, navigate to File/New.

At the initialization of setup software there is recognition of free serial ports on computer. This will make the user easy interface to select which one is he using. (In the case that some other application is using serial port, it will not appear in offered ports. It is due to system keeps this port reserved for another application. If the user wants to use it, it is necessary to close other application and restart WaterLoggerSetup software again.)



Equipment for pedology, hydrology, meteorology, research of plants and environmental diagnostics

For correct communication with datalogger the user needs to setup bps setting. Otherwise, depending on system, there can appear error messages.



For reading actual configuration in datalogger, press Retrieve button. For saving configuration to datalogger, press Send button. During both of them progress bar indicates the operation. Some fields of setup software are shaded. It is dynamically changed with selected device (WaterLoggerEWS or WaterLogger12). If the user will read configuration from connected datalogger, software automatically recognize what type of device is connected.




It is highly recommended to turn off datalogger during reading or writing configuration. In the case of very low communication speeds (1200bps) it can take several tens of seconds to get complete these commands. LEDs on datlogger hardware are good indicators of the operation.

Now this manual will guide you through settings in detail.

Equipment for pedology, hydrology, meteorology, research of plants and environmental diagnostics

Analog Settings WaterLoggerEWS

ANALOG										POLYNOMES				PC COM	
	LOG	MIN	MAX	VECT	RATIO	POLARITY	RANGE	POLY	ALIAS	A0	A1	A2	A3		
AIN1	<input type="checkbox"/>	<input type="checkbox"/>	<input type="checkbox"/>	<input type="checkbox"/>		UNIP	2500 mV	P1	RH	0	1	0	0	COM1	
AIN2	<input type="checkbox"/>	<input type="checkbox"/>	<input type="checkbox"/>	<input type="checkbox"/>		UNIP	2500 mV	P1	TA	0	0.001	0	0	115200	bps
AIN3	<input type="checkbox"/>	<input type="checkbox"/>	<input type="checkbox"/>	<input type="checkbox"/>		UNIP	2500 mV	P1	WD	0	0	0	0		
AIN4	<input type="checkbox"/>	<input type="checkbox"/>	<input type="checkbox"/>	<input type="checkbox"/>		UNIP	2500 mV	P1	LevelUS	0	0	0	0		
AIN5	<input type="checkbox"/>	<input type="checkbox"/>	<input type="checkbox"/>	<input type="checkbox"/>				P1	EW5	0	0	0	0		
AIN6	<input type="checkbox"/>	<input type="checkbox"/>	<input type="checkbox"/>	<input type="checkbox"/>				P1	Levl485	0	0	0	0		
AIN7	<input checked="" type="checkbox"/>	<input type="checkbox"/>	<input type="checkbox"/>	<input type="checkbox"/>			110 kPa	P2	Pa	0	0	0	0		
AIN8	<input checked="" type="checkbox"/>	<input type="checkbox"/>	<input type="checkbox"/>	<input type="checkbox"/>		UNIP	20 V	P2	Vbatt	0	0	0	0		
AIN9	<input type="checkbox"/>	<input type="checkbox"/>	<input type="checkbox"/>	<input type="checkbox"/>		BIP	2500 mV	P1		0	0	0	0		
AIN10	<input type="checkbox"/>	<input type="checkbox"/>	<input type="checkbox"/>	<input type="checkbox"/>		BIP	2500 mV	P1		0	0	0	0		
AIN11	<input type="checkbox"/>	<input type="checkbox"/>	<input type="checkbox"/>	<input type="checkbox"/>		BIP	2500 mV	P1		0	0	0	0		
AIN12	<input type="checkbox"/>	<input type="checkbox"/>	<input type="checkbox"/>	<input type="checkbox"/>		BIP	2500 mV	P1		0	0	0	0		
AIN13	<input type="checkbox"/>	<input type="checkbox"/>	<input type="checkbox"/>	<input type="checkbox"/>				P1	Level1	0	0	0	0		
AIN14	<input type="checkbox"/>	<input type="checkbox"/>	<input type="checkbox"/>	<input type="checkbox"/>				P1	Temp1	0	0	0	0		
AIN15	<input type="checkbox"/>	<input type="checkbox"/>	<input type="checkbox"/>	<input type="checkbox"/>				P1	Cond1	0	0	0	0		
AIN16	<input type="checkbox"/>	<input type="checkbox"/>	<input type="checkbox"/>	<input type="checkbox"/>				P1	Batt1	0	0	0	0		
AIN17	<input type="checkbox"/>	<input type="checkbox"/>	<input type="checkbox"/>	<input type="checkbox"/>				P1	Level2						
AIN18	<input type="checkbox"/>	<input type="checkbox"/>	<input type="checkbox"/>	<input type="checkbox"/>				P1	Temp2						
AIN19	<input type="checkbox"/>	<input type="checkbox"/>	<input type="checkbox"/>	<input type="checkbox"/>				P1	Cond2						
AIN20	<input type="checkbox"/>	<input type="checkbox"/>	<input type="checkbox"/>	<input type="checkbox"/>				P1	Batt2						



Select Device
 WaterLoggerEWS

Send

Retrieve

Detailed analog inputs settings screenshot

ANALOG									
	LOG	MIN	MAX	VECT	RATIO	POLARITY	RANGE	POLY	ALIAS
AIN1	<input type="checkbox"/>	<input type="checkbox"/>	<input type="checkbox"/>	<input type="checkbox"/>		UNIP	2500 mV	P1	RH
AIN2	<input type="checkbox"/>	<input type="checkbox"/>	<input type="checkbox"/>	<input type="checkbox"/>		UNIP	2500 mV	P1	TA
AIN3	<input type="checkbox"/>	<input type="checkbox"/>	<input type="checkbox"/>	<input type="checkbox"/>		UNIP	2500 mV	P1	WD
AIN4	<input type="checkbox"/>	<input type="checkbox"/>	<input type="checkbox"/>	<input type="checkbox"/>		UNIP	2500 mV	P1	LevelUS
AIN5	<input type="checkbox"/>	<input type="checkbox"/>	<input type="checkbox"/>	<input type="checkbox"/>				P1	EW5
AIN6	<input type="checkbox"/>	<input type="checkbox"/>	<input type="checkbox"/>	<input type="checkbox"/>				P1	Levl485
AIN7	<input checked="" type="checkbox"/>	<input type="checkbox"/>	<input type="checkbox"/>	<input type="checkbox"/>			110 kPa	P2	Pa
AIN8	<input checked="" type="checkbox"/>	<input type="checkbox"/>	<input type="checkbox"/>	<input type="checkbox"/>		UNIP	20 V	P2	Vbatt
AIN9	<input type="checkbox"/>	<input type="checkbox"/>	<input type="checkbox"/>	<input type="checkbox"/>		BIP	2500 mV	P1	
AIN10	<input type="checkbox"/>	<input type="checkbox"/>	<input type="checkbox"/>	<input type="checkbox"/>		BIP	2500 mV	P1	
AIN11	<input type="checkbox"/>	<input type="checkbox"/>	<input type="checkbox"/>	<input type="checkbox"/>		BIP	2500 mV	P1	
AIN12	<input type="checkbox"/>	<input type="checkbox"/>	<input type="checkbox"/>	<input type="checkbox"/>		BIP	2500 mV	P1	
AIN13	<input type="checkbox"/>	<input type="checkbox"/>	<input type="checkbox"/>	<input type="checkbox"/>				P1	Level1
AIN14	<input type="checkbox"/>	<input type="checkbox"/>	<input type="checkbox"/>	<input type="checkbox"/>				P1	Temp1
AIN15	<input type="checkbox"/>	<input type="checkbox"/>	<input type="checkbox"/>	<input type="checkbox"/>				P1	Cond1
AIN16	<input type="checkbox"/>	<input type="checkbox"/>	<input type="checkbox"/>	<input type="checkbox"/>				P1	Batt1
AIN17	<input type="checkbox"/>	<input type="checkbox"/>	<input type="checkbox"/>	<input type="checkbox"/>				P1	Level2
AIN18	<input type="checkbox"/>	<input type="checkbox"/>	<input type="checkbox"/>	<input type="checkbox"/>				P1	Temp2
AIN19	<input type="checkbox"/>	<input type="checkbox"/>	<input type="checkbox"/>	<input type="checkbox"/>				P1	Cond2
AIN20	<input type="checkbox"/>	<input type="checkbox"/>	<input type="checkbox"/>	<input type="checkbox"/>				P1	Batt2

In Analog window the user can set if particular input is logging or not. Also, it is

Equipment for pedology, hydrology, meteorology, research of plants and environmental diagnostics

possible to set minimum and maximum values to be logged.

On AIN1...AIN4 there is option to check VECTor calculation. It is designed for wind direction sensors, where vector average, minimum and maximum are calculated. If VECT box is not checked, all calculations are scalar.

Input AIN5 (EWS) is virtual input – calculated from EarlyWarning System. If EWS is active, this input must be checked for logging.

Input AIN6 (Lev1485) is reserved for RS485 sensor connection (for future enhancement).

Input AIN7 (Pa) measures internal pressure sensor. It is used for compensation of water level data from Solinst serial sensor.

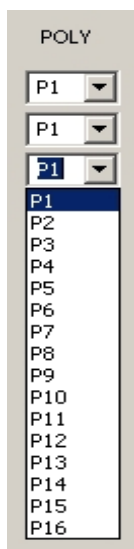
Input AIN8 is connected internally to POWER terminal. It is designed for battery voltage measurement. Also, it has 20Vdc input voltage range (typical 12V lead acid battery).

Inputs AIN9...AIN12 have 24 bit A/D converters with differential inputs. So, they offer more options for precise measurements. For AIN9...AIN12 it is possible to set POLARITY to UNIPOLAR or BIPOLAR. Also RANGE can be from 19mV to 2500mV. Inputs AIN9...AIN12 offer ratio measurements by checking RATIO box. It is designed for PT100 measurements, where on AIN9 is connected reference resistor (normally precision 100ohm, on terminals) and AIN10...AIN12 is connected to PT100 sensor. This way the user can measure temperature with 4 wire method (for highest precision).

Inputs AIN13...AIN16 are serial Solinst water level sensor inputs. The user can select for logging Level, Temperature, Conductivity of water and internal battery of sensor.

Inputs AIN17...AIN20 are not available on WaterLoggerEWS hardware.

For all analog inputs there is POLYnome setting. It is necessary to set appropriate polynome to calculate measured value to engineering units. For real analog inputs values are in mV. Internal pressure sensor is measured in Pa. Serial Solinst sensor units depend on actual sensor settings. It is possible to share the same polynome for more inputs.



POLY

P1

P1

P1

P1

P2

P3

P4

P5

P6

P7

P8

P9

P10

P11

P12

P13

P14

P15

P16

Equipment for pedology, hydrology, meteorology, research of plants and environmental diagnostics

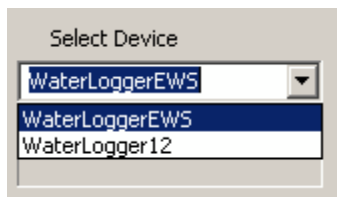
ALIAS setting is the name of analog input. It is used to identify measured quantity by name. Name can be maximum 7 characters and first character must be a letter.

Polynomes

Polynome table is the same for both types of hardware and are shared with Digital settings. There are available 16 polynomes of 3rd order total.

POLYNOMES				
	A0	A1	A2	A3
P1	0	1	0	0
P2	0	0.001	0	0
P3	0	0	0	0
P4	0	0	0	0
P5	0	0	0	0
P6	0	0	0	0
P7	0	0	0	0
P8	0	0	0	0
P9	0	0	0	0
P10	0	0	0	0
P11	0	0	0	0
P12	0	0	0	0
P13	0	0	0	0
P14	0	0	0	0
P15	0	0	0	0
P16	0	0	0	0

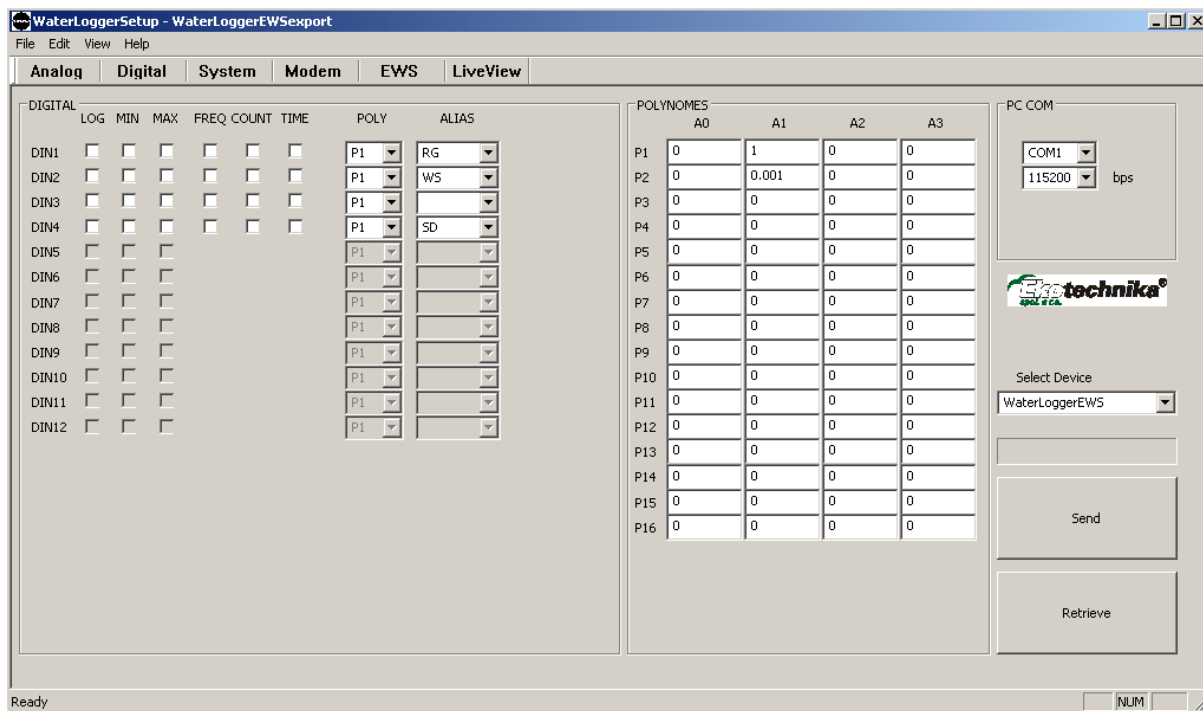
Select Device



Equipment for pedology, hydrology, meteorology, research of plants and environmental diagnostics

The user can select one of predefined hardware: WaterLoggerEWS or WaterLogger12. This setting changes (enables, disables) various options in setup software. If the user will read configuration from datalogger it will automatically recognize if it is WaterLoggerEWS or WaterLogger12.

Digital Settings WaterLoggerEWS



WaterLoggerSetup - WaterLoggerEWSexport

File Edit View Help

Analog Digital System Modem EWS LiveView

DIGITAL

	LOG	MIN	MAX	FREQ	COUNT	TIME	POLY	ALIAS
DIN1	<input type="checkbox"/>	<input type="checkbox"/>	<input type="checkbox"/>	<input type="checkbox"/>	<input type="checkbox"/>	<input type="checkbox"/>	P1	RG
DIN2	<input type="checkbox"/>	<input type="checkbox"/>	<input type="checkbox"/>	<input type="checkbox"/>	<input type="checkbox"/>	<input type="checkbox"/>	P1	WS
DIN3	<input type="checkbox"/>	<input type="checkbox"/>	<input type="checkbox"/>	<input type="checkbox"/>	<input type="checkbox"/>	<input type="checkbox"/>	P1	
DIN4	<input type="checkbox"/>	<input type="checkbox"/>	<input type="checkbox"/>	<input type="checkbox"/>	<input type="checkbox"/>	<input type="checkbox"/>	P1	SD
DIN5	<input type="checkbox"/>	<input type="checkbox"/>	<input type="checkbox"/>	<input type="checkbox"/>	<input type="checkbox"/>	<input type="checkbox"/>	P1	
DIN6	<input type="checkbox"/>	<input type="checkbox"/>	<input type="checkbox"/>	<input type="checkbox"/>	<input type="checkbox"/>	<input type="checkbox"/>	P1	
DIN7	<input type="checkbox"/>	<input type="checkbox"/>	<input type="checkbox"/>	<input type="checkbox"/>	<input type="checkbox"/>	<input type="checkbox"/>	P1	
DIN8	<input type="checkbox"/>	<input type="checkbox"/>	<input type="checkbox"/>	<input type="checkbox"/>	<input type="checkbox"/>	<input type="checkbox"/>	P1	
DIN9	<input type="checkbox"/>	<input type="checkbox"/>	<input type="checkbox"/>	<input type="checkbox"/>	<input type="checkbox"/>	<input type="checkbox"/>	P1	
DIN10	<input type="checkbox"/>	<input type="checkbox"/>	<input type="checkbox"/>	<input type="checkbox"/>	<input type="checkbox"/>	<input type="checkbox"/>	P1	
DIN11	<input type="checkbox"/>	<input type="checkbox"/>	<input type="checkbox"/>	<input type="checkbox"/>	<input type="checkbox"/>	<input type="checkbox"/>	P1	
DIN12	<input type="checkbox"/>	<input type="checkbox"/>	<input type="checkbox"/>	<input type="checkbox"/>	<input type="checkbox"/>	<input type="checkbox"/>	P1	

POLYNOMES

	A0	A1	A2	A3
P1	0	1	0	0
P2	0	0.001	0	0
P3	0	0	0	0
P4	0	0	0	0
P5	0	0	0	0
P6	0	0	0	0
P7	0	0	0	0
P8	0	0	0	0
P9	0	0	0	0
P10	0	0	0	0
P11	0	0	0	0
P12	0	0	0	0
P13	0	0	0	0
P14	0	0	0	0
P15	0	0	0	0
P16	0	0	0	0

PC COM

COM1 115200 bps

Select Device

WaterLoggerEWS

Send

Retrieve

Ready NUM

Equipment for pedology, hydrology, meteorology, research of plants and environmental diagnostics

Ekotechnika spol. s r.o.

Mokropeska 1832

252 28 Cernosice, Czech Republic

Exclusive representation of Eijkelkamp b.v, ADC Ltd, Solinst Canada, Decagon and Soilmoisture Equipment Corporation

phone +420 251 640 511

fax: +420 251 640 512

info@ekotechnika.cz

VAT: 25147501

REG.: CZ25147501

www.ekotechnika.cz

Bank: CSOB,

Account No.

581409153/0300

Detailed Digital settings.

DIGITAL	LOG	MIN	MAX	FREQ	COUNT	TIME	POLY	ALIAS
DIN1	<input type="checkbox"/>	<input type="checkbox"/>	<input type="checkbox"/>	<input type="checkbox"/>	<input type="checkbox"/>	<input type="checkbox"/>	P1	RG
DIN2	<input type="checkbox"/>	<input type="checkbox"/>	<input type="checkbox"/>	<input type="checkbox"/>	<input type="checkbox"/>	<input type="checkbox"/>	P1	WS
DIN3	<input type="checkbox"/>	<input type="checkbox"/>	<input type="checkbox"/>	<input type="checkbox"/>	<input type="checkbox"/>	<input type="checkbox"/>	P1	
DIN4	<input type="checkbox"/>	<input type="checkbox"/>	<input type="checkbox"/>	<input type="checkbox"/>	<input type="checkbox"/>	<input type="checkbox"/>	P1	SD
DIN5	<input type="checkbox"/>	<input type="checkbox"/>	<input type="checkbox"/>				P1	
DIN6	<input type="checkbox"/>	<input type="checkbox"/>	<input type="checkbox"/>				P1	
DIN7	<input type="checkbox"/>	<input type="checkbox"/>	<input type="checkbox"/>				P1	
DIN8	<input type="checkbox"/>	<input type="checkbox"/>	<input type="checkbox"/>				P1	
DIN9	<input type="checkbox"/>	<input type="checkbox"/>	<input type="checkbox"/>				P1	
DIN10	<input type="checkbox"/>	<input type="checkbox"/>	<input type="checkbox"/>				P1	
DIN11	<input type="checkbox"/>	<input type="checkbox"/>	<input type="checkbox"/>				P1	
DIN12	<input type="checkbox"/>	<input type="checkbox"/>	<input type="checkbox"/>				P1	

In Digital window the user can set if particular input is logging or not. DIN1, DIN4 can measure frequency, they can be used as a counter or time measurements. At all times only one option is allowed.

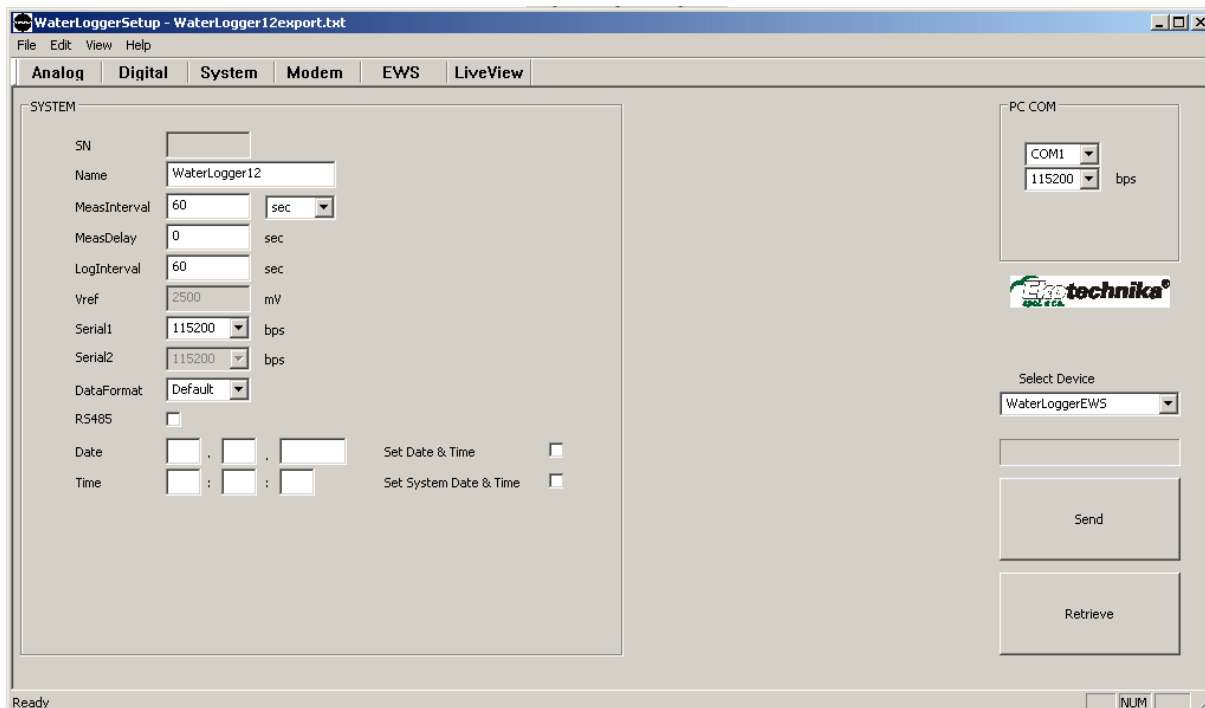
FREQ	COUNT	TIME
<input checked="" type="checkbox"/>	<input type="checkbox"/>	<input type="checkbox"/>
<input type="checkbox"/>	<input checked="" type="checkbox"/>	<input type="checkbox"/>
<input type="checkbox"/>	<input checked="" type="checkbox"/>	<input type="checkbox"/>
<input type="checkbox"/>	<input type="checkbox"/>	<input checked="" type="checkbox"/>

Inputs DIN5...DIN12 are not available on WaterLoggerEWS hardware. They are reserved for future enhancement.

Setting ALIASes, POLYnomes and Device Select are the same as for analog inputs.

Equipment for pedology, hydrology, meteorology, research of plants and environmental diagnostics

System Settings



The screenshot shows the 'WaterLoggerSetup - WaterLogger12export.txt' window with the 'System' tab selected. The 'SYSTEM' section contains the following settings:

- SN: [Empty field]
- Name: WaterLogger12
- MeasInterval: 60 sec
- MeasDelay: 0 sec
- LogInterval: 60 sec
- Vref: 2500 mV
- Serial1: 115200 bps
- Serial2: 115200 bps
- DataFormat: Default
- RS485: ☐
- Date: [Empty fields] Set Date & Time: ☐
- Time: [Empty fields] Set System Date & Time: ☐

The 'PC COM' section on the right shows:

- COM1: COM1
- 115200 bps
- Select Device: WaterLoggerEWS
- Buttons: Send, Retrieve

The status bar at the bottom shows 'Ready' and 'NUM'.

System settings are the same for both WaterLoggerEWS and WaterLogger12 (except RS485 selection). The user can set the following parameters to the station:

Name – represents the name of the station. It is used to identify individual stations, if there are more installed in the field.

MeasInterval – interval used for periodical measurements on inputs

!!! Please set this interval to value higher than 600 s. If measuring interval is set to value lower than 600 s battery life of the Solinst sensor will be greatly reduced !!!

MeasDelay – delay to stabilize outputs from sensors

LogInterval – interval used for statistical calculation and then saving data to internal memory (and SD card on WaterLoggerEWS hardware)

Serial1 – sets baud rate on service port.

Data Format – selects output data format. This setting is reserved for further customization.

RS485 – selection when communication on Serial1 port is using RS485 line. It is available for *Equipment for pedology, hydrology, meteorology, research of plants and environmental diagnostics*

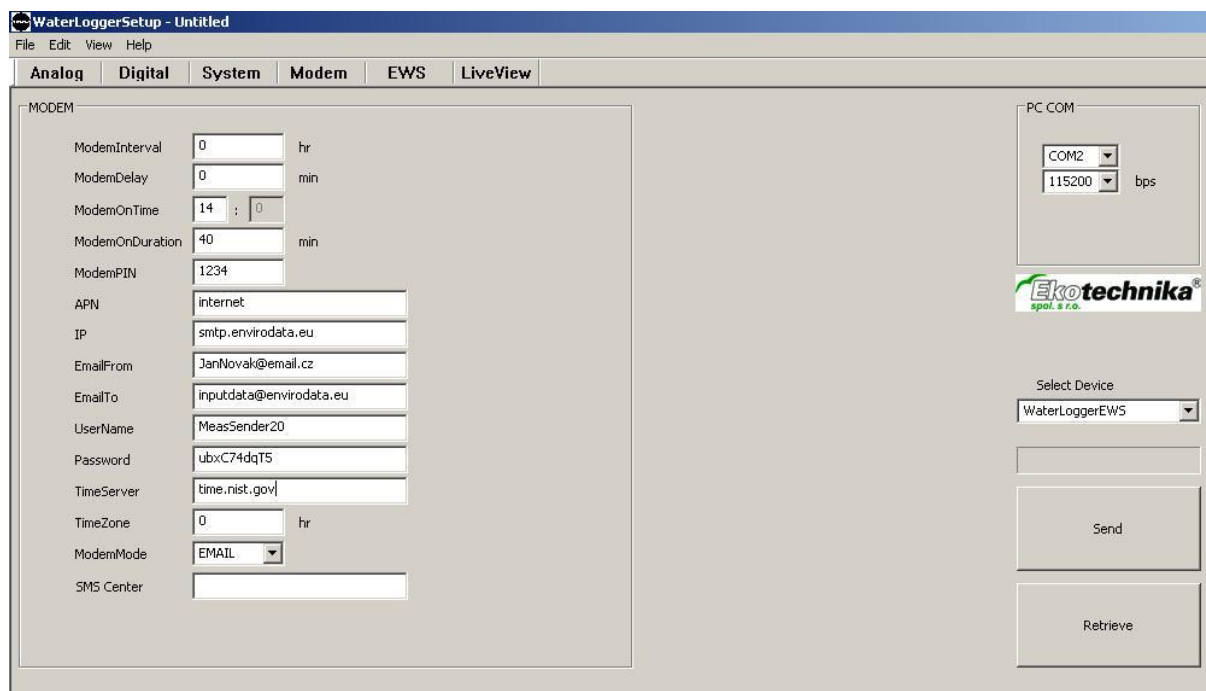
WaterLoggerEWS only. If datalogger is in OFF position, RS232 service line is still available.

Date and Time - these settings are updated after retrieving configuration from datalogger (and shows its time). User can set computer time to datalogger with Set System Date & Time checkbox or his own settings with Set Date & Time checkbox.

MeasInterval and LogInterval units can be selected in seconds, minutes or hours. Both of them use the same units and are automatically recalculated. When retrieving settings from datalogger, unit is always seconds.

Serial number (S/N), reference voltage Vref and Serial2 parameters are not available for the user from setup software. Serial number is set during production and can not be modified any more. Reference voltage can be set only from Hyperterminal (see section 6). It is a protection of accidental overwriting already calibrated datalogger. Serial2 setting is not available for the user – it is used internally by GPRS modem.

Modem Settings



WaterLoggerSetup - Untitled
File Edit View Help

Analog Digital System Modem EWS LiveView

MODEM

ModemInterval 0 hr
ModemDelay 0 min
ModemOnTime 14 : 0
ModemOnDuration 40 min
ModemPIN 1234
APN Internet
IP smtp.envirodata.eu
EmailFrom JanNovak@email.cz
EmailTo inputdata@envirodata.eu
UserName MeasSender20
Password ubxC74dqT5
TimeServer time.nist.gov
TimeZone 0 hr
ModemMode EMAIL
SMS Center

PC COM
COM2
115200 bps

Ekotechnika spol. s r.o.

Select Device
WaterLoggerEWS

Send

Retrieve

Modem settings are the same for both WaterLoggerEWS and WaterLogger12 (except SMS Center selection). The user can set the following parameters to the station:

ModemInterval – interval for sending data over GSM/GPRS network. It can be in the range of

Equipment for pedology, hydrology, meteorology, research of plants and environmental diagnostics

0...24 hours. If set to zero, there is no mode data transfer.

ModemDelay – not used in actual version

ModemOnTime – time, when modem is waiting for remote call (service call). At that time datalogger will turn on modem, register to network and wait for remote call.

ModemOnDuration – duration (in minutes), how long datalogger will wait for remote call. Please, note that longer time increase power consumption.

ModemPIN – PIN code for SIM card. Minimum 4 and maximum 8 digits. It is mandatory.

APN – access point of GSM/GPRS provider

IP – IP address for data transfer. If email selected it is smtp server IP address, if ftp selected it is ftp location IP address. Can be in number dot format or text format. If ftp selected, please, make sure for appropriate privileges (write a file to this location) are granted.

EmailFrom – email address from which data will be sent.

EmailTo – email address where data will be sent.

UserName – user name for smtp or ftp account

UserPassword – password for smtp or ftp account

TimeServer – NTP time server for time synchronization. Can be in number dot or text format.

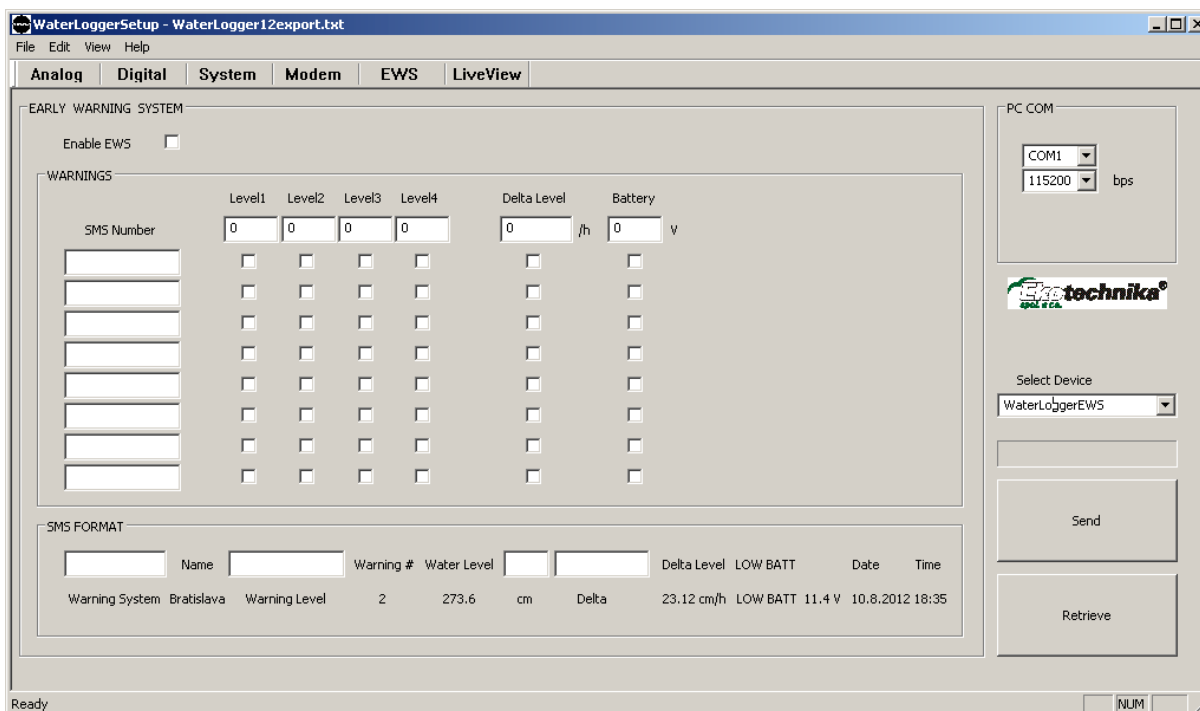
TimeZone – time zone from UTC

ModemMode – selecting email or ftp data transfer

SMS Center – It is mandatory to use international phone number format (+420....). This setting is applicable for WaterLoggerEWS only.

Equipment for pedology, hydrology, meteorology, research of plants and environmental diagnostics

EWS Settings



The screenshot shows the 'EWS' tab in the 'WaterLoggerSetup' application. The 'EARLY WARNING SYSTEM' section has an 'Enable EWS' checkbox. Below it, the 'WARNINGS' section contains a table for setting SMS numbers and warning levels. The 'SMS FORMAT' section shows a preview of the warning message format.

SMS Number	Level1	Level2	Level3	Level4	Delta Level	Battery
0	0	0	0	0	0 /h	0 v
	<input type="checkbox"/>	<input type="checkbox"/>	<input type="checkbox"/>	<input type="checkbox"/>	<input type="checkbox"/>	<input type="checkbox"/>
	<input type="checkbox"/>	<input type="checkbox"/>	<input type="checkbox"/>	<input type="checkbox"/>	<input type="checkbox"/>	<input type="checkbox"/>
	<input type="checkbox"/>	<input type="checkbox"/>	<input type="checkbox"/>	<input type="checkbox"/>	<input type="checkbox"/>	<input type="checkbox"/>
	<input type="checkbox"/>	<input type="checkbox"/>	<input type="checkbox"/>	<input type="checkbox"/>	<input type="checkbox"/>	<input type="checkbox"/>
	<input type="checkbox"/>	<input type="checkbox"/>	<input type="checkbox"/>	<input type="checkbox"/>	<input type="checkbox"/>	<input type="checkbox"/>
	<input type="checkbox"/>	<input type="checkbox"/>	<input type="checkbox"/>	<input type="checkbox"/>	<input type="checkbox"/>	<input type="checkbox"/>
	<input type="checkbox"/>	<input type="checkbox"/>	<input type="checkbox"/>	<input type="checkbox"/>	<input type="checkbox"/>	<input type="checkbox"/>

SMS FORMAT

Name: Warning # Water Level Delta Level LOW BATT Date Time

Warning System Bratislava Warning Level 2 273.6 cm Delta 23.12 cm/h LOW BATT 11.4 V 10.8.2012 18:35

Early Warning Settings are available for WaterLoggerEWS only. It is divided into two groups – warnings and sms format. Following parameters apply:

Enable EWS – turn on/off EWS system

SMS Number – user can set up maximum 8 phone numbers, where warning sms messages will be sent. The format must be in international phone number (+420...).

Level1...Level4 – level warning values. All values must be set. Settings must fill following condition:

$$\text{Level1} < \text{Level2} < \text{Level3} < \text{Level4}$$

Delta Level – threshold value for delta warning. Please, note that it is always recalculated to per hour value (regardless of actual MeasInterval and LogInterval).

Battery – threshold value for battery warning. If the battery warning will fall below predefined

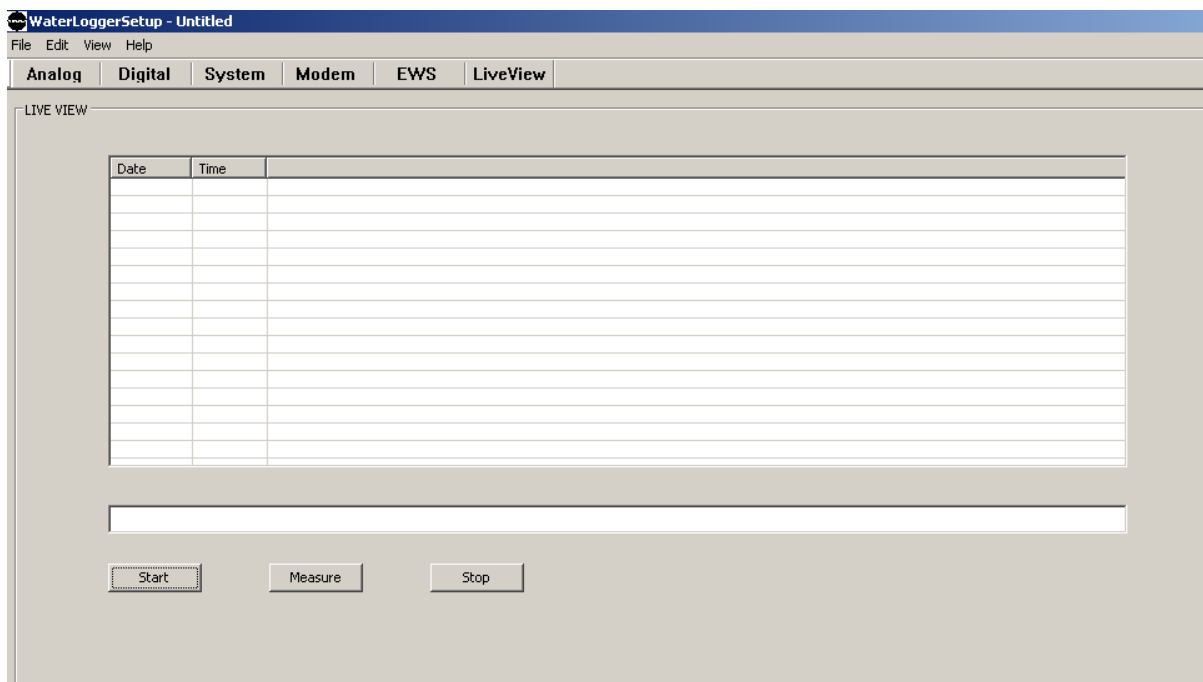
Equipment for pedology, hydrology, meteorology, research of plants and environmental diagnostics

value, batt warning will be generated.

Check appropriate box to enable particular warning for particular sms phone number.

Sms message is generated as combination from fields generated by datalogger and predefined by the user. For more details, please, refer to EWS section.

LiveView



LiveView screen is designed for fast control of settings and measured data. After pressing Start button, it will receive data from connected datalogger and according to actual settings in WaterLoggerSetup software it will add columns with logged variables and fill data fields. On the bottom user can watch actual received line from datalogger. When finished, it is necessary to press Stop button (to release serial line for another operation).

Equipment for pedology, hydrology, meteorology, research of plants and environmental diagnostics

Example of LiveView window:

LIVE VIEW

Date	Time	Pa	Vbatt
17.01.2013	08:03:40	97.842	3.930
17.01.2013	08:03:30	97.847	3.933
17.01.2013	08:03:20	97.850	3.930
17.01.2013	08:03:10	97.842	3.932
17.01.2013	08:03:00	97.846	3.932
17.01.2013	08:02:50	97.844	3.932
17.01.2013	08:02:40	97.845	3.932
17.01.2013	08:02:30	97.841	3.932
17.01.2013	08:02:20	97.845	3.932
17.01.2013	08:02:10	97.846	3.927
17.01.2013	08:02:00	97.842	3.928
17.01.2013	08:01:50	97.844	3.932
17.01.2013	08:01:40	97.839	3.926
17.01.2013	08:01:30	97.842	3.932
17.01.2013	08:01:20	97.845	3.932
17.01.2013	08:01:10	97.839	3.930
17.01.2013	08:01:00	97.842	3.930

17.01.2013 08:03:40 97.842 3.930

Start Measure Stop

Equipment for pedology, hydrology, meteorology, research of plants and environmental diagnostics

Ekotechnika spol. s r.o.

Mokropeska 1832

252 28 Cernosice, Czech Republic

Exclusive representation of Eijkelkamp b.v, ADC Ltd , Solinst Canada, Decagon and Soilmoisture Equipment Corporation

phone +420 251 640 511

fax: +420 251 640 512

info@ekotechnika.cz

VAT: 25147501

REG.: CZ25147501

www.ekotechnika.cz

Bank: CSOB,

Account No.

581409153/0300

9. Technical specification

single ended analog inputs	4 inputs, 2.5V range, 12 bit resolution
differential analog inputs	4 inputs, 19mV to 2.5V range, 24 bit resolution
digital inputs	4 inputs, 0...1500Hz, max +15V
accuracy	0.1%
serial inputs	one Solinst serial sensor
calculation to engineering units	polynomial $a+bx+cx^2+dx^3$
max nr. of polynomes	16
MeasInterval range	1...3600 s
LogInterval range	1...3600 s
ModemInterval range	0...24 hr
internal modem	quad band GSM/GPRS modem
data transfer method	email, FTP
internal memory	512kB for data
memory card	SD or SDHC card
communication	1 x RS232/485 port
	1 x RS232 for sensors (customized)
communication speed	Serial1 up to 115200bps, 8N1
nr. of controlled outputs	1 x switching power supply for sensors
	1 x 2.5V switched for wind direction sensors
EWS system	4 level warnings
	1 delta warning
	1 low batt warning
	up to 8
SMS numbers	
power supply inputs	
POWER	4V _{DC} ... 24V _{DC}
SOLAR	12V _{DC} ... 20V _{DC}
BATT	12V _{DC}
CHARGER	6V _{DC} ... 13V _{DC}
RTC back up battery	CR2032
power consumption (not including sensors)	
without SD card	7 mAtyp measuring (BATT)
	30 uAtyp OFF (POWER)
with SD card	50 mAmax measuring (BATT)
RTC	with lithium battery
RTC accuracy (without synchronization)	50ppm
time synchronization	once a day over internet if ModemInterval is not zero
dimensions	225mm x 170mm x 50mm
temperature range	-40 ... +60°C

Equipment for pedology, hydrology, meteorology, research of plants and environmental diagnostics

protection

IP65

10. Quick reference

Commands summary

Command	parameter	description
A	See text	analog inputs setup
D	See text	digital inputs setup
MeasInterval	1...3600	measuring interval in seconds
MeasDealy	1...60	measuring dealy in seconds
LogInterval	0...3600	logging interval in seconds
Vref	2450...2550	reference voltage in mV
Serial1	300, 1200, 2400, 9600, 19200, 38400, 57600, 115200	baud rate for Serial1 in bps
Serial2	300, 1200, 2400, 9600, 19200, 38400, 57600, 115200	baud rate for Serial2 in bps
Date	dd.mm.yyyy	
Time	hh:mm:ss	
RS485	0..1	Použití linky RS485
ModemInterval	0...24	period for modem to send data in hours
ModemDelay	0...1434	delay from modem period in seconds
ModemOnTime	hh:mm:ss	time, when modem will wake up and wait for a call every day
ModemOnDuration	0...30	duration of modem waiting for a call in minutes
ModemPIN	number	
ModemNumber	number	
APN	string	GPRS provider access point
IP	string	smtp server IP address or FTP server IP address
EmailFrom	string	
EmailTo	string	
UserName	string	user name for authorized access to smtp server or FTP server
Password	string	password for authorized access to smtp server or FTP server
TimeServer	string	
TimeZone	-12...12	time shift from UTC in hours
Ftp	0...1	modem mode email or FTP

Equipment for pedology, hydrology, meteorology, research of plants and environmental diagnostics

EWS	0...1	using Early Warning System
SmsCenter	+number	
SmsNumber	1...8 +number	recipients for EWS warnings
WaterLevel	1...4 float bxxxxxxx	water level warnings
DeltaLevel	float bxxxxxxx	delta level waring
BatWarning	float bxxxxxxx	low battery waring
SmsText	1...4 text	sms message composition
?		show system parameters
Config?		show full inputs configuration
Modem?		show modem parameter
EarlyWarning?		show EWS settings
SD?	/waterlog	show files on SD card
ReadFile	/waterlog/wlog0001.txt	type one file from SD card
SaveConfig		save current configuration to nonvolatile memory
LogVariables		show format of logged variables
ReadData	1...200	read last nr. of records in memory
ActualData		show last measured data
ReadConfig		read configuration from nonvolatile memory
Help		print all commands
Exit		exit from Service mode
Reset		reboot datalogger
Upgrade		start firmware upgrade procedure

Equipment for pedology, hydrology, meteorology, research of plants and environmental diagnostics