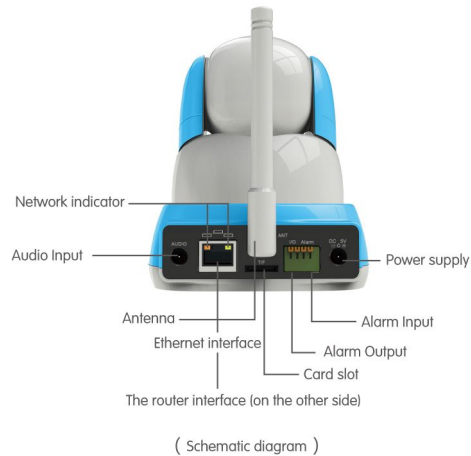


# LW-M102 Baby monitor Installation Instruction

## 1.Camera connection port



At first, pls install the antenna,connect the netcable with your local router's lan port ,connect the adapter with the camera, after around 30 seconds,the indicator lights will be green, the camera will automatically pan/tilt around 30 seconds, after that,the user can use the camera by smartphones or computer according to below brief instructions.

## 2.Iphone app brief instruction

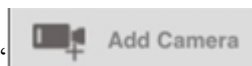
### 2.1.App installation

Search and install free app "AnyvueSCR" in iPhone APP Store



### 2.2Add camera

Click add button“



### 2.3 Add camera under Lan

Click

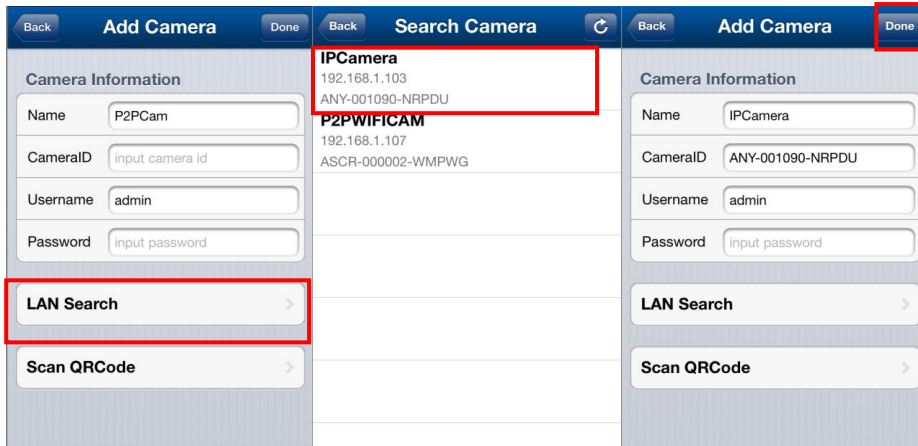


and click the device in the list,enter the user name and password

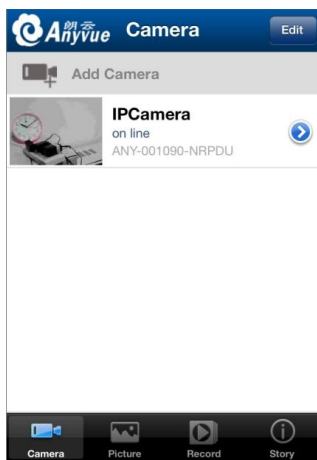
click



,the the camera will be online as below snapshots show:

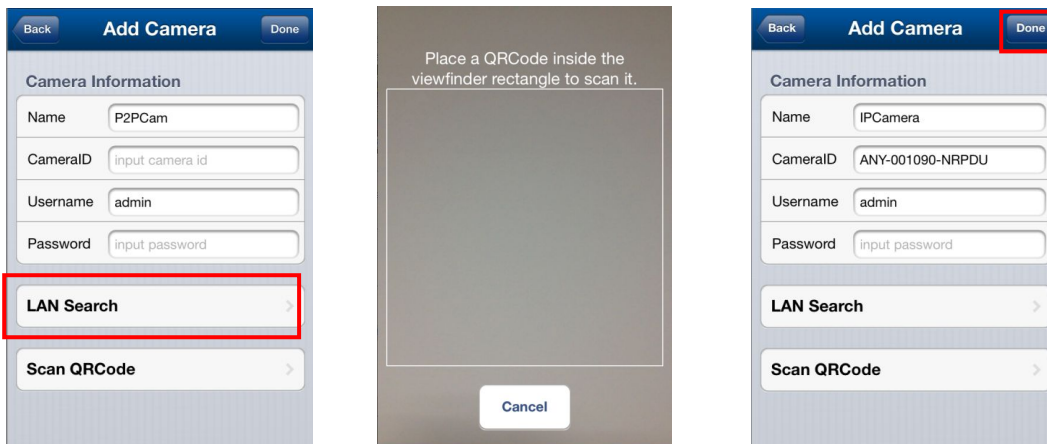


\*default user name is admin,no password



## 2.4 Add camera by QR code:

click **Scan QRCode** scan the QR code on the bottom of camera,enter the user name and password,the click the done button to finish it successfully as below snapshots show. **Done**



\*default user name is admin,no password

**After you add the camera,you could begin to set up the camera's configuration**

## 2.5 Live Video

Click the online camera, visit the device user interface, touch the phone's screen, you can control the PT and camera's other function as below:



## 3.Android App installation

### 3.1 App Installation

In the "Google play" "91 Assistant" "360 Mobile Assistant" and search


APP "AnyvueSCR", download and install it 

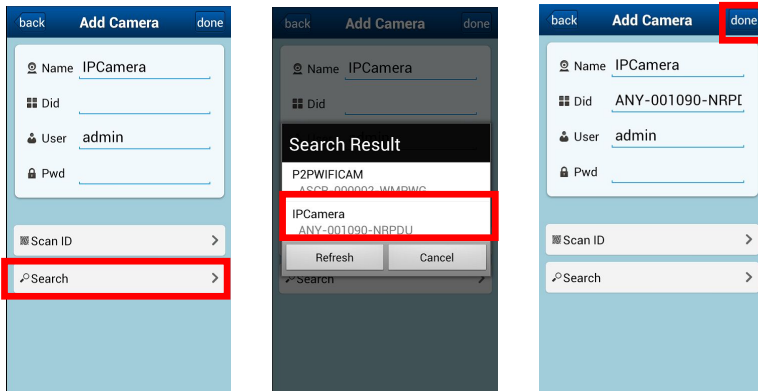
### 3.2 Adding camera

Click add button "

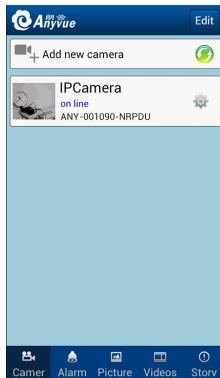
### 3.3 Adding camera under Lan:

Click  and click the device in the camera list, enter the user name and password

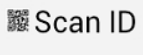

click ", the camera will be online as below snapshots show:

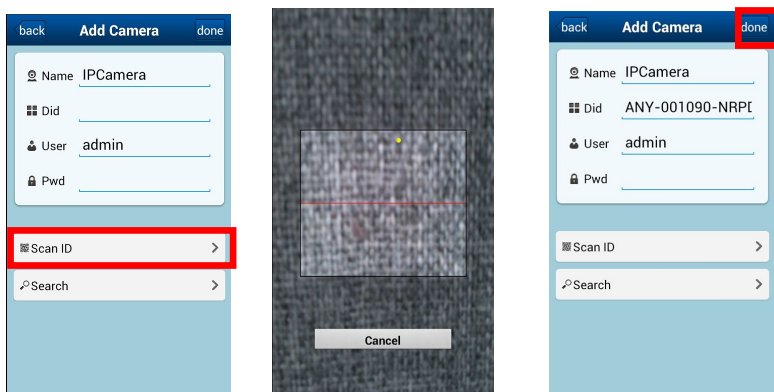


\*default user name is admin,no password



### 3.4 Add camera by QR code:

click  scan the QR code on the bottom of camera,enter the user name and password,the click the done button to finish it successfully as below snapshots show. 



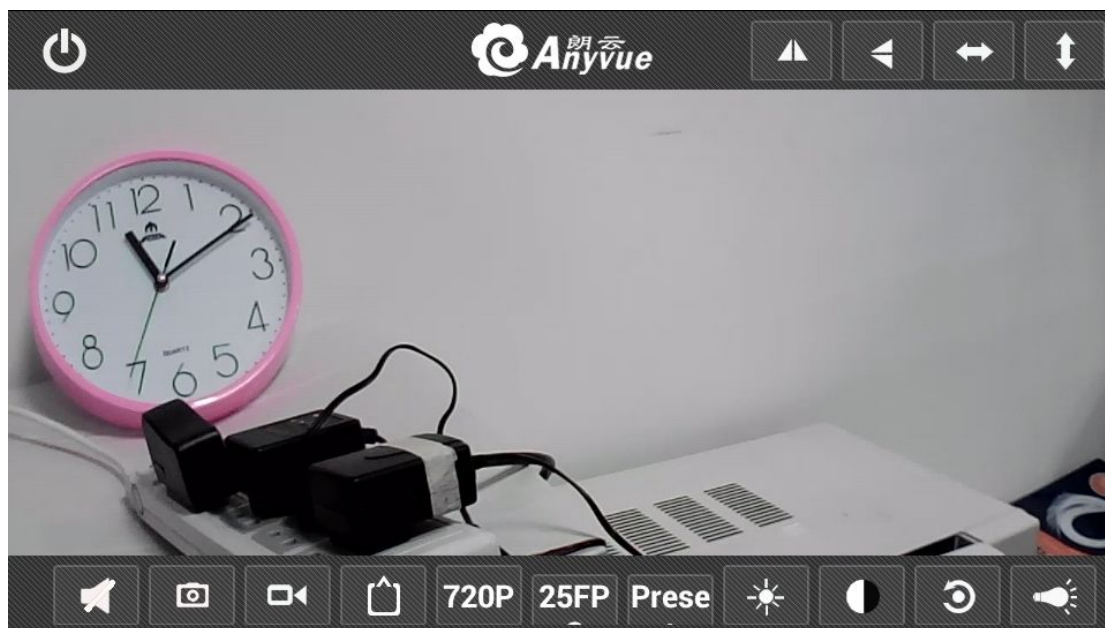
\*default user name is admin,no password

After you add the camera,you could begin to set up the camera's configuration

### 3.5Live Video

Click the online camera, touch the phone's screen, you can control the PT and camera's other

function as below:



## 4.PC client installation

### 4.1.PC software download

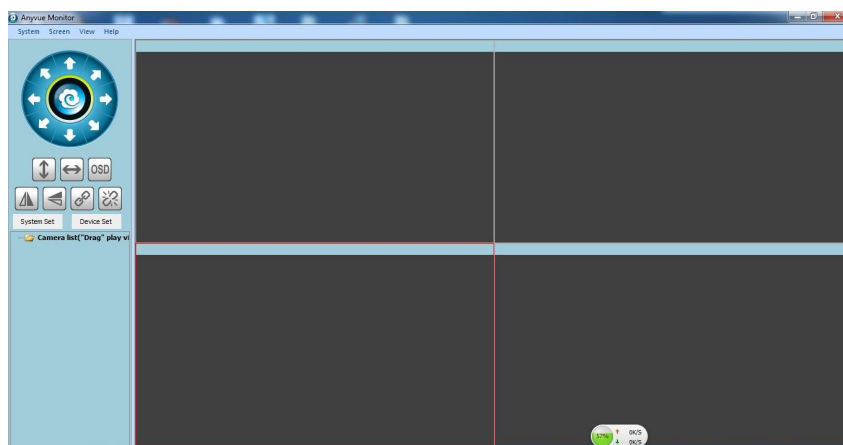
download and install the software from our official website [www.e-longwin.com](http://www.e-longwin.com) you could get the software “Anyvue App for SCR-PC” from download zone.

### 4.2 PC software installation:



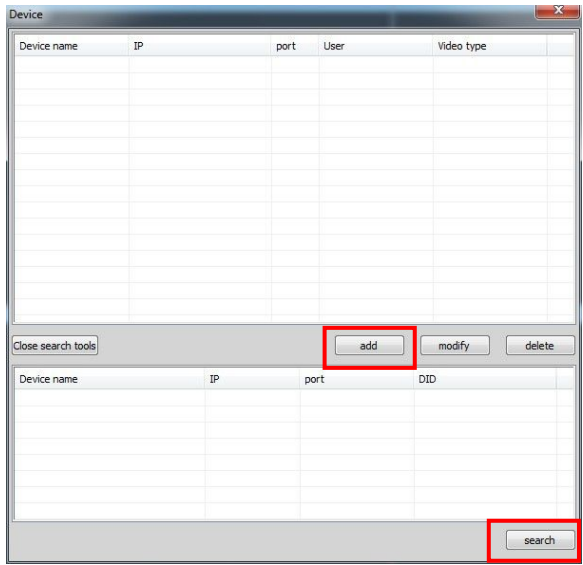
double click the software  install it according to the software instruction.

### 4.3 Double click the icon



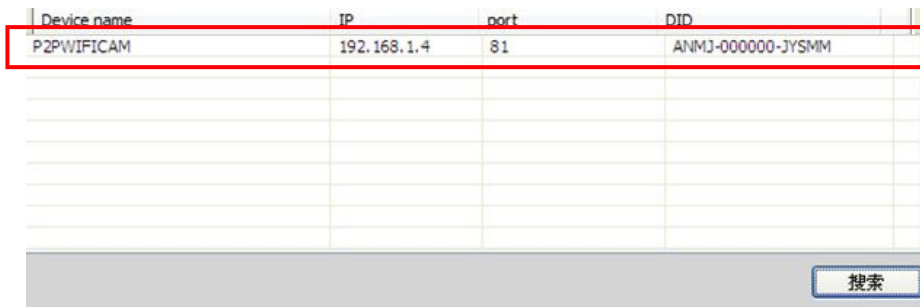
### 4.4 Add camera

Click the buttons as the snapshot shows: Device Set

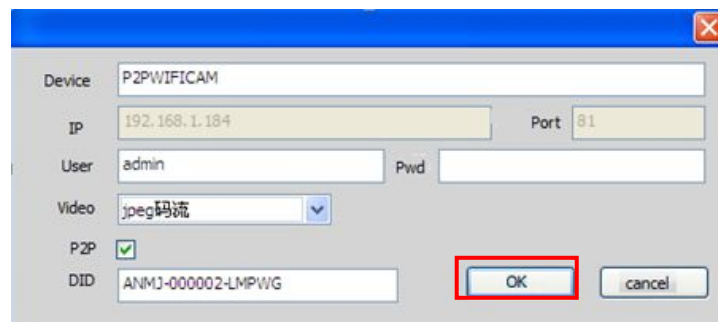


#### 4.5 Add camera under Lan

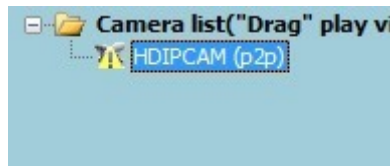
Click the search button “ search ” then you could get the camera’s information under lan:



double click the camera’s information and confirm to add it

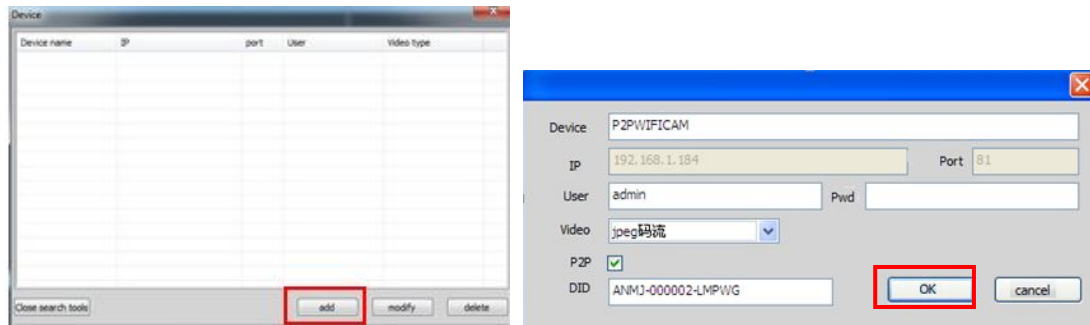


The new added camera will show on the down left corner of the main:



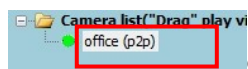
#### 4.6 Add new device manually

If the camera and the PC do not in the same LAN, need to add the camera manually, click the button “Add”, see below image:

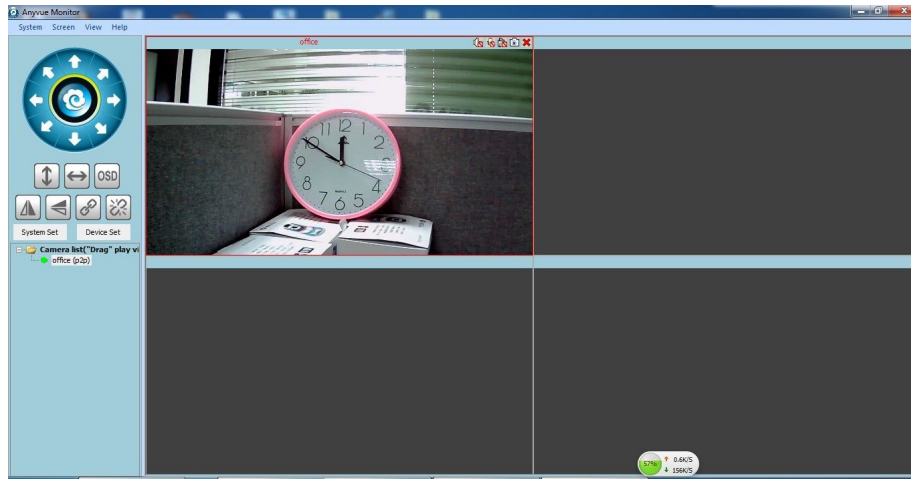


“Device name” could be set by client, “DID” is the ID number of the camera, the number could be found on the tag at the bottom of the camera. Type in and click “Confirm”, add the camera successfully.

#### 4.7 Watch the video



drag the camera to the right area to watch the video, if there only one image, double click to watch it:





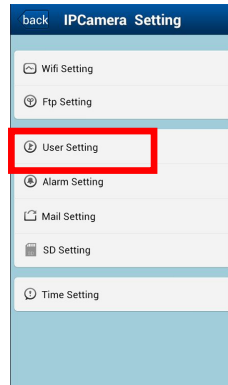
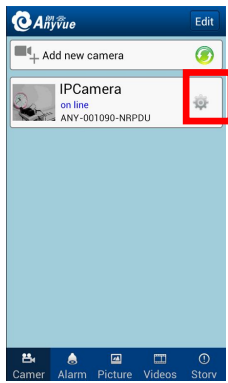
## 5. Basic application

Note: The following description basic on Android phones as sample, Apple phone is with different button but same other operations.

### 5.1 user settings and Share (change the user name and password)

To protect privacy, the owner can change the camera's administrator user name and password

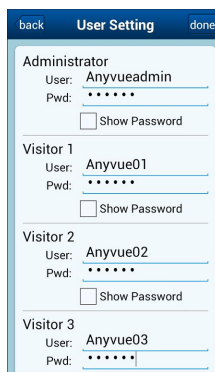
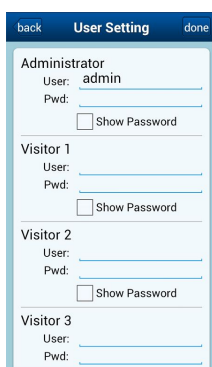
in the device list page click "  " to enter the settings page, then click "  User Setting " to enter the user settings menu as shown below:



5.1.1 User Settings menu, the owner can change the administrator information, set 3 visitors user names and passwords for easy sharing (a visitor user name can share other visitors not only limit 1 visitor), user name and password can be arbitrarily set up, easy to remember, and then click on the "done" button, as shown below:

\* Administrator: is defined as the owner, you can set all functions of the camera by setting the visitors a user name and password to share with friends and family. When you do not want to share, you can change the user name and password in the user settings menu;

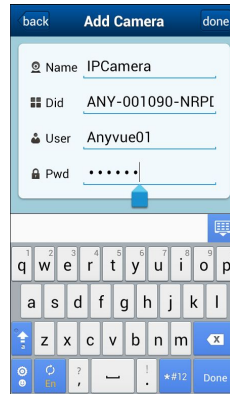
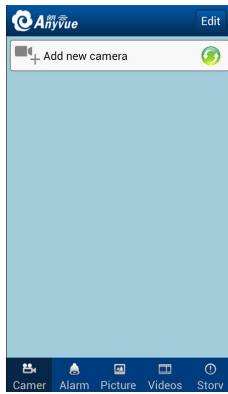
\* Visitor: Watch the video obtained by the owner to share the camera ID, user name and password, only to watch the video and some of the basic operation of the camera, but can not enter the camera settings menu;





After changing the administrator user name and password, the camera will automatically restart (40 seconds), the camera can be used normally after the restart.

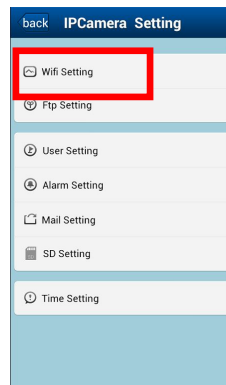
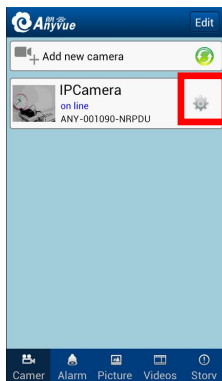
5.1.2 After setting the visitor user name can be sharing, the visitor install the software and click on the "Add new camera", just manually add the camera ID, visitors enter a user name and password to view. When the owner did not want to share, change the visitors username and password, as shown below:

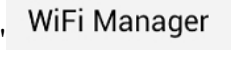



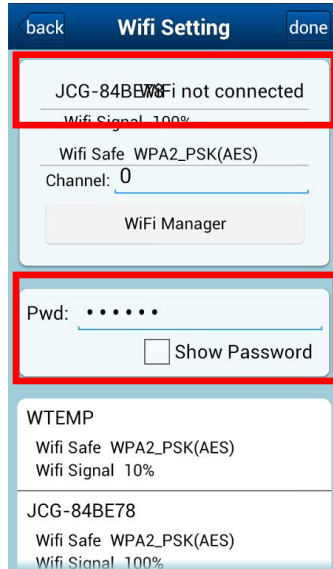
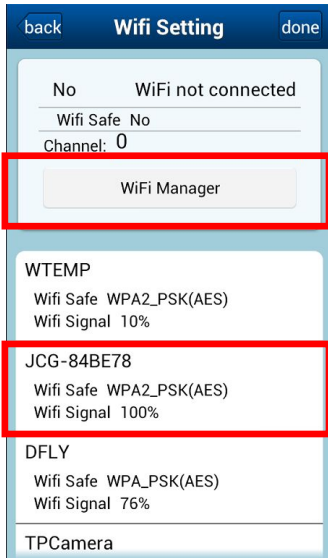


## 5.2 WIFI setting

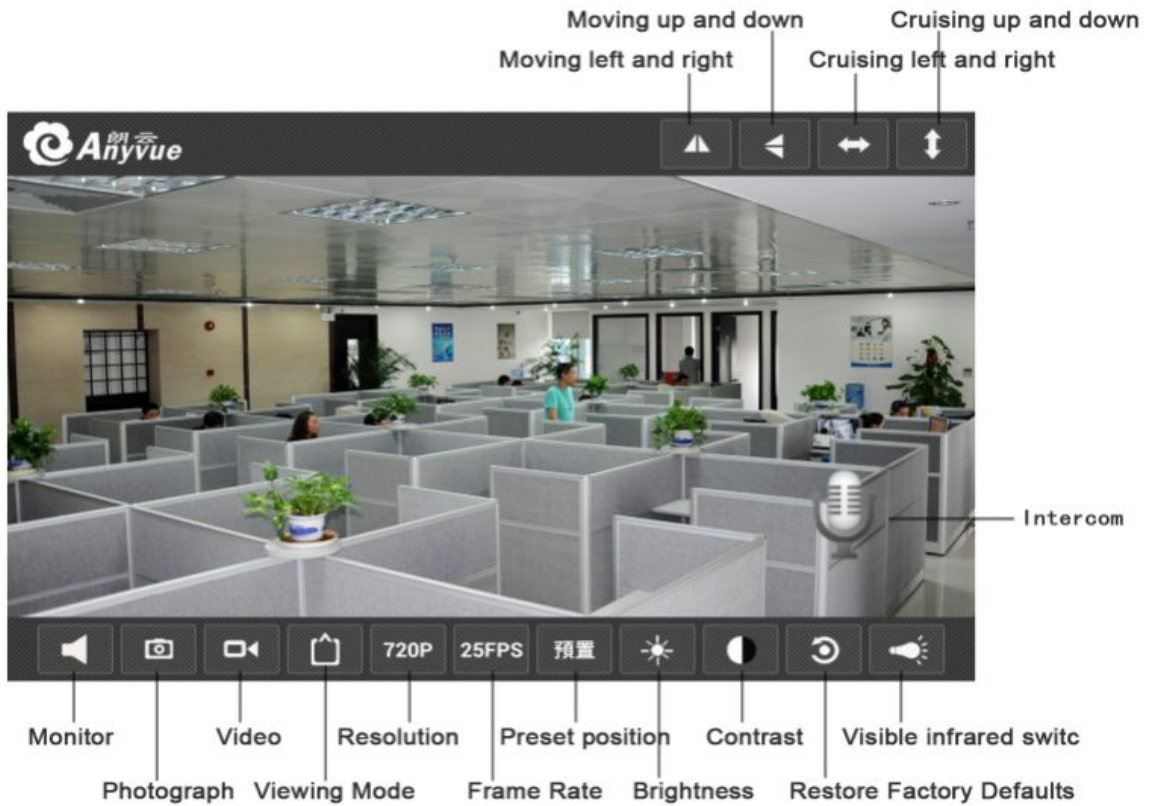
Click “” and enter setting menu, click “ Wifi Setting” and enter wifi setting menu, as below::



Click “ WiFi Manager”, the camera will search for nearby WIFI signal, and then in the list, select the desired WIFI signal input WIFI connection password, click on the “”, the camera will automatically restart (40 seconds or so), you can unplug the network cable when you restart, but can not unplug the power, the camera will automatically restart the WIFI mode. After the above process, you can turn off the power to replace the camera placement, as shown below:



### 5.3 The user interface instructions



### 6.Reset

Pls keep pressing the reset button when the camera is working,the reset button is on the bottom of camera as below pic shows,after around 10s,the camera will restart,pls note,during this period,pls make sure the camera is power on.the default user name of camera is admin,no password.



## 7.Tech support

Any questions,pls directly contact our sales team,we will reply you within 24 hours,and you also could download the user manual,apps.from our official website [www.e-longwin.com](http://www.e-longwin.com)

## 8.FAQ

**Q:When I try to look for the camera under lan,but it seems failed.**

**A:**Pls check the below points step by step:

- 1.camera is power on.
- 2.camera connects your local router,with lan port.
- 3.camera,computer or smart phone are under same router's lan or wlan.
- 4.restart the camera,and try to search it again.

If you still could not fix the problem by above instruction,pls directly contact our sales team,our engineers will check it within 24 hours,and try to reply you a.s.a.p.we also could supply remote assistance if you need.

**Q:why the camera is offline.**

**A:**pls check it by blow points step by step:

1.pls restart the camera,and make sure the camera connects your local router's lan or wlan successfully.

2.pls make sure the router connects the internet successfully.

If the camera still is offline after you finish above steps,pls reset the camera,and restart it,meanwhile,pls give me your camera's user name and password to us for remote check.

**Q:when I watch the live demo via internet,the video will be a little delay.**

**A:**that is normal,because the camera transfers the live video stream(640\*480pixels or less,around 25fps) directly to your computer or smartphone by internet or 3G.the live video's image quality is mostly depend on your local internet situation.the minimum internet requirement is 4Madsl.

If you want to watch live video more smoothly,you could change the image quality be QVGA,that image pixels is 320\*240 pixels.

**Q:After I set up the wlan of camera,why the camera becomes offline**

**A:**After you finish the set up of wifi,the camera will restart automatically within 2 mins

Then the wifi is workable,and you could pull out the netcable.

**Q:Why I could not login in the camera after I change the password or user name**

**A;**after you change the information,you need to login in again with new user name and password in camera device edit interface.

**Q:How to shart the camera's live video with friends**

**A:**pls set up the user name and password for visitor in user set up,after you finish it,you could give the camera's DID,user name,and password to your friends.the visitor only could watch the live video and could not change the camera's configuration.

**Q:TF card is unworkable.**

**A:**Up to 32G TF card supported with FAT32 form,when you insert the card,pls make sure the camera is power off.

