

Qleaf Pro

How to successfully fit a Qleaf Pro

Presentation length: 15 slides – approximately 45 min



QLeaf Pro


EXSILENT

hear
you
now

Purpose of this training: To have a successful Qleaf Pro fitting

This training assumes prior knowledge:

- Basic principles of the Qleaf Pro as presented in Qleaf Pro training A – benefits, technology, specifications, and functionality
- How to program ExSilent hearing aids, using Qfit 3.1 as presented in the Qfit 3.1 training

The purpose of this training is to share some best practices with you how to successfully fit a Qleaf Pro

- This training aims to help you avoid some common pitfalls and to increase customer satisfaction
- In this training, we follow the basic hearing aid fitting steps normally taken after you have completed the measurement of the audiogram of the customer

Qleaf Pro box contents

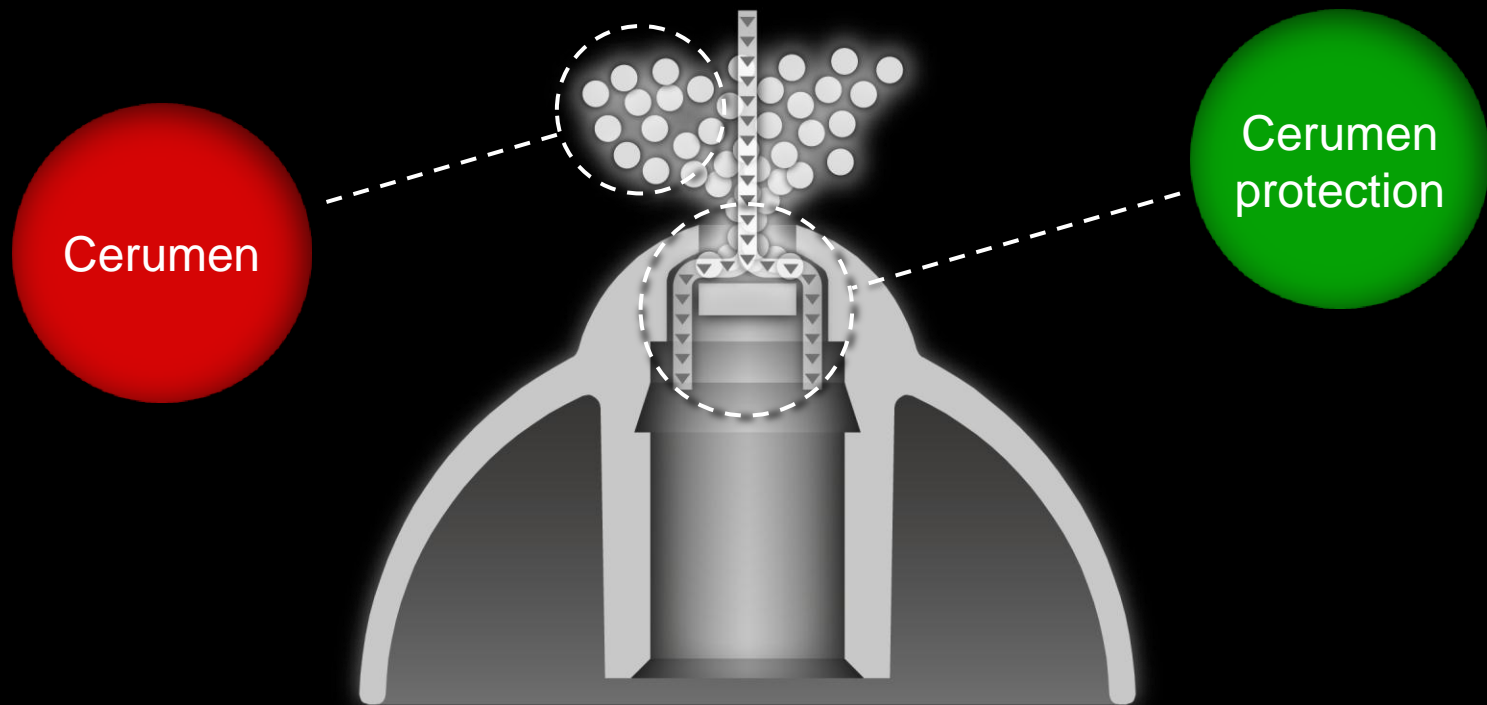
QLeaf Pro



- Qleaf Pro instrument
- 3 Closed soft tips
- 1 Open soft tip
- Battery removal tool
- Carrying case
- User Manual
- Warranty Card



It is important to use ExSilent supplied soft tips with integrated cerumen protection.



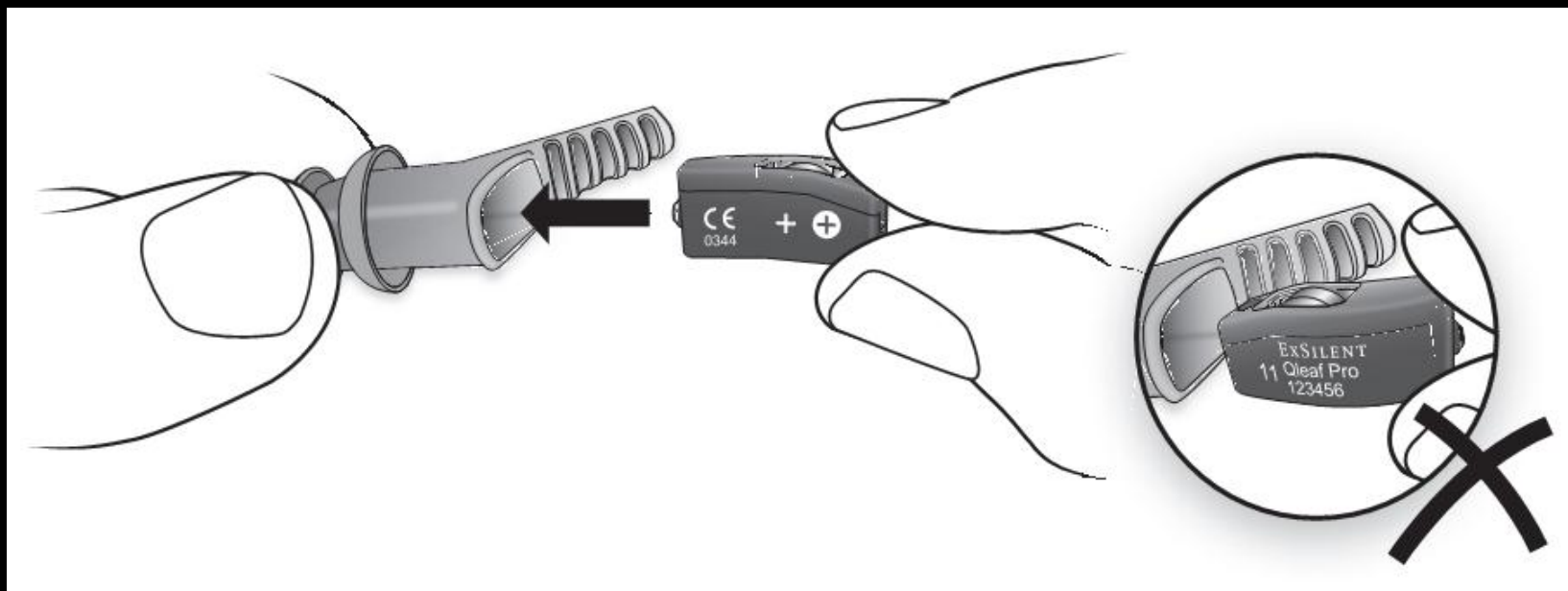
Qleaf Pro Soft Tip selection



Tip!

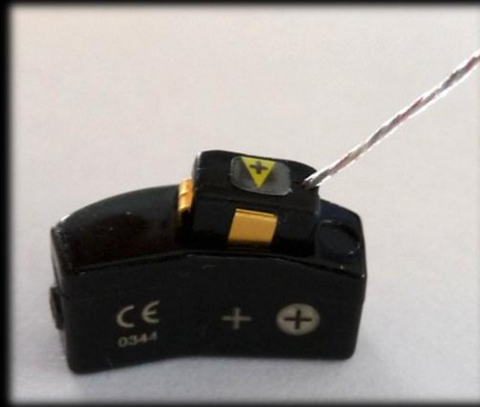
- 4 soft tips are available for your Qleaf Pro: 3 closed tips (S/M/L) and 1 open tip
- Starting with the larger closed dome will greatly reduce the chance of feedback
- If the patient is experiencing occlusion, work your way down the closed soft tip sizes until the occlusion is managed.
- If occlusion continues to be an issue using closed soft tips, switch to the open soft tips using the same method, starting with the largest size.

Attaching the soft tip



Make sure to insert the Qleaf Pro into the soft tip completely to ensure proper retention

Connecting the programmer cable to your Qleaf Pro



- The Qleaf Pro programming is done through the battery opening using an adapter. Plug the adapter onto the end of the CS44 programming cable making sure the red dots line up.
- Insert the programming adapter into the Qleaf Pro making sure the arrow on the adapter is pointing to the side of the case marked with the “+” and CE mark.

When inserting the device into your patient's ear, mute the device

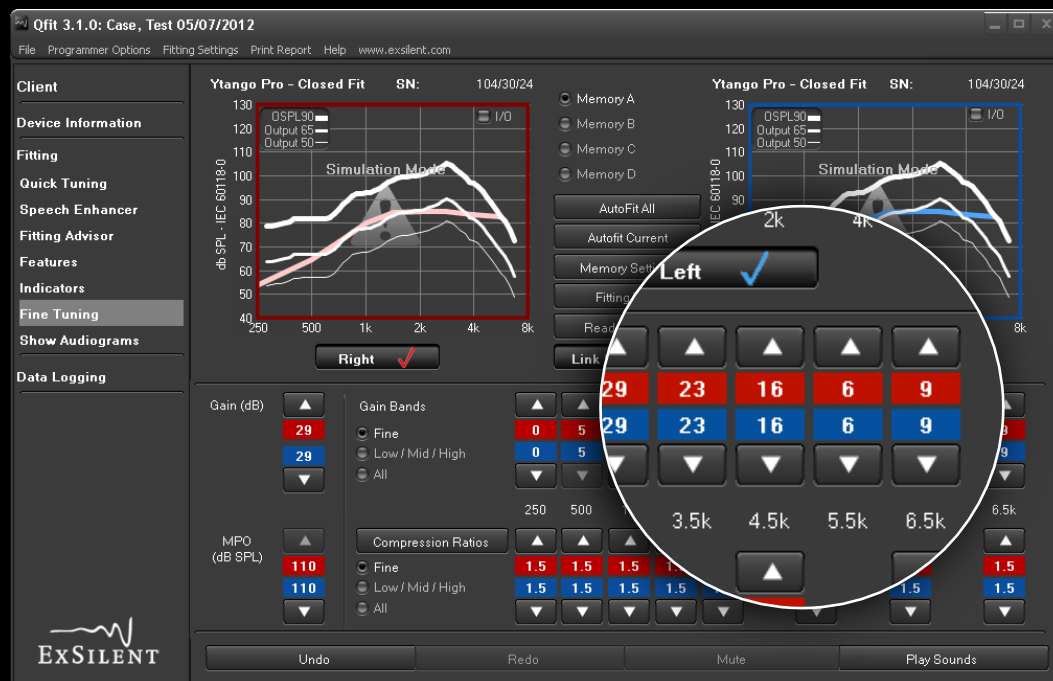
Remember, during programming you can mute the device when changing settings or placing the device in the ear.

The screenshot displays the Qfit 3.1.0 software interface for fitting a Ytango Pro device. The window title is "Qfit 3.1.0: Case, Test 05/07/2012". The interface is divided into several sections:

- Client:** Ytango Pro - Closed Fit, SN: 104/30/24
- Device Information:** Ytango Pro - Closed Fit, SN: 104/30/24
- Fitting:** Simulation Mode graphs for Right and Left ears, showing dB SPL - IEC 60118-0 vs. Frequency (250 to 8k Hz). The Right ear graph is highlighted with a red border, and the Left ear graph is highlighted with a blue border.
- Memory:** Memory A, Memory B, Memory C, Memory D
- Buttons:** AutoFit All, Autofit Current, Memory Settings, Fitting Type, Read Device(s), Link Sides (checked), Right (checked), Left (checked)
- Gain (dB):** 29 (Right), 29 (Left)
- Gain Bands:** Fine, Low / Mid / High, All
- Compression Ratios:** Fine, Low / Mid / High, All
- MPO (dB SPL):** 110 (Right), 110 (Left)
- Buttons:** Undo, Redo, Mute (circled in white), Play Sounds

Fitting: what to do if you encounter feedback

If Soft Tip selection does not eliminate feedback, go to the Fine Tuning section in the Qfit software

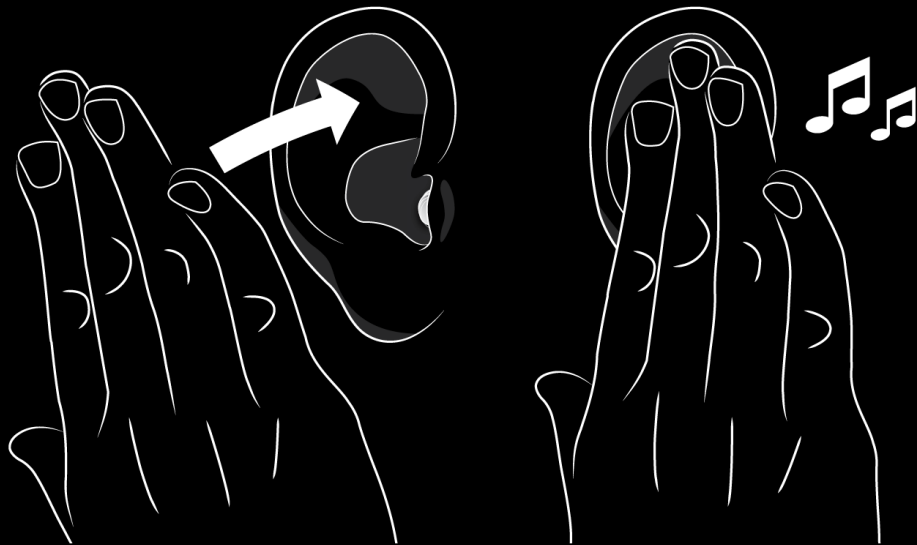


- Select side with feedback challenges

- Reduce the level in the following bands: 3.5K, 4.5K, 5.5K, 6.5K

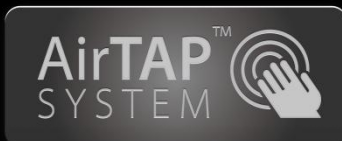
- increase the gain in each band in small steps until you reach the gain level needed to satisfy your patients needs

Memory management and AirTAP™

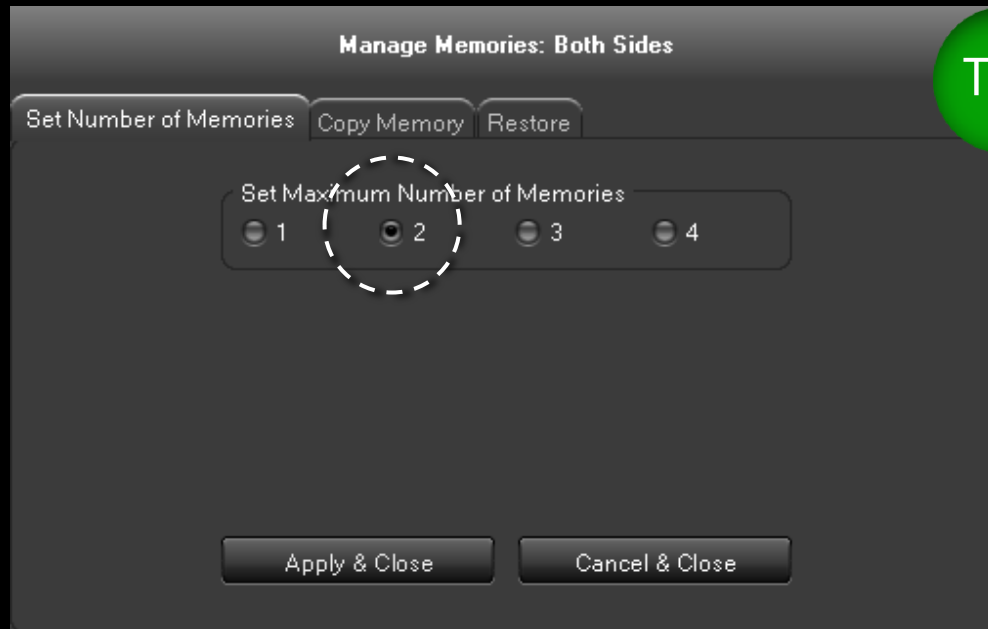


AirTAP™ is simple -

- AirTAP™ is used to switch between memories; max 4 programs



Memory management and AirTAP™

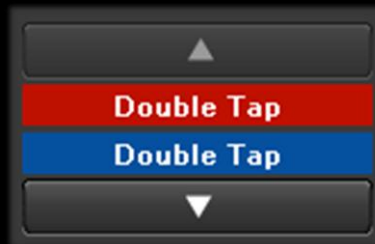
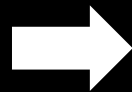
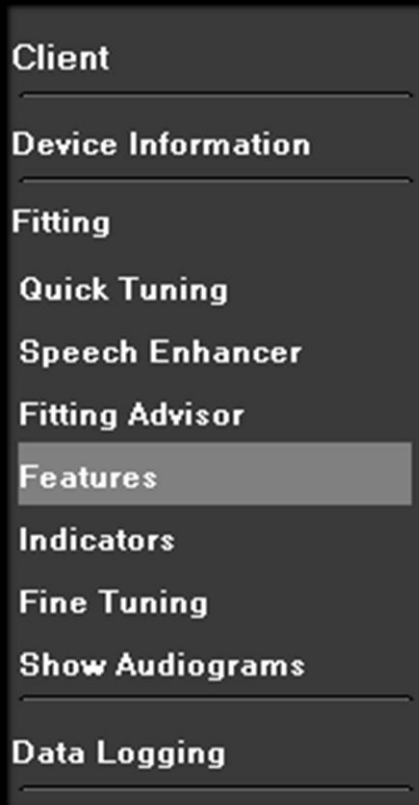


Tip!

Limit the number of memories

- Start with only 2 programs instead of 4
- After experience has been built, additional memories can be added
- You can set the number of memories in Qfit 3.1 (Fitting → Memory settings)

Memory management and AirTAP™. ‘Single Tap’ or ‘Double Tap’?



- By default, the AirTAP™ switch is set to single tap
- In rare cases, patients may experience unwanted triggers by certain sounds
- To accommodate those users, the AirTAP™ setting can be set to a double tap
- Found in Qfit 3.1: Fitting/Features/Acoustic Switch

Questions?

Please contact us with any further questions!



Carol Huang

Asia, Russia, Poland

+31-20-6751004
chuang@exsilent.com



Joe Stommes

United States

1-866-742-0808
jstommes@exsilent.com



Lorence Marsdin

Europe, Middle East, Australia

+31-20-6751004
lmarsdin@exsilent.com



Heidi Dietmann

Germany

+31-20-6751004
hdietmann@exsilent.com



Nicolas Pereira

Latin America

+598 99580885
npereira@exsilent.com



Gerónimo Dos Santos Otero

Europe

+31-20-6751004
gdossantos@exsilent.com

Thank You!

For additional product information visit www.ExSilent.com