

WIRELESS VIDEO HOME MONITOR

LW2400/LW2450 SERIES QUICK START GUIDE



Time
Under 20 Minutes*
* Installation time may vary based on application and camera location



Tools
Hand Tools



Skills - Easy
Plug & Play connections,
On screen set up

NOTE: AVOID INSTALLING IN A LOCATION WHICH REQUIRES THE WIRELESS SIGNAL TO PASS THROUGH CEMENT, CONCRETE AND METAL STRUCTURES. THIS WILL REDUCE THE TRANSMISSION RANGE.

Getting Started



This wireless video home monitor comes with the following components:

- 1x Video Monitor
- 1x Camera*
- 1x Video Monitor Charging Cradle
- 1x Camera Power Adaptor*
- 1x Video Monitor Power Adaptor
- 1X mini-USB Cable
- 1x Instruction Manual
- 1x Quick Start Guide
- 1x Driver CD
- 3x Cable Clips*

Optional Component:

- 1x microSD Memory Card
- 1x microSD to SD Adapter Card

Check the "Inside the Box" panel on the product package for configuration.

*Number of cameras, camera type, power adaptors may vary by model.

A. LW2400 Series Camera Setup

- The Camera can be placed on a flat surface, or wall mounted.
Determine where you want to locate the camera.
NOTE: Keep cables and wires at least 3 feet (1 meter) away from infants or young children. Use the included cable clips as necessary.



OPTIONAL

The camera features mounting holes on the bottom of the base and can be mounted to a wall if desired.

Determine the camera position that will give you the best view before permanently wall mounting the camera. Ensure the power cable is long enough to power the camera.

Please refer to the Owner's Manual for a mounting template and full instructions on how to wall-mount your camera.



- Connect the Power Adaptor to the 5V Input on the back of the camera.

OPTIONAL: You can use 'AA' batteries or a rechargeable battery pack to power the camera. Please refer to Appendix A in the Owner's Manual for instructions.

NOTE: Battery operation is suggested for temporary monitoring only.

- Connect the power adaptor to a power outlet.

- Slide the power switch up, to the **ON** position.



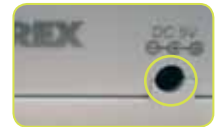
OR B. LW2450 Series Pan/Tilt Camera Setup

- The Camera can be placed on a flat surface or wall mounted. For wall mounting, optional wall mount accessory is required. See manual for details.
Determine where you want to locate the camera.
NOTE: Keep cables and wires at least 3 feet (1 meter) away from infants or young children. Use the included cable clips as necessary.



Desk/Counter Mount

- Connect the Power Adaptor to the 5V Input on the back of the camera.



- Connect the power adaptor to a power outlet.



- Slide the power switch located at the side of the camera, to the **ON** position.



- Use the joystick on the video monitor to Pan/ Tilt the camera.



NOTE: You must be in full-screen mode to adjust the viewing angle. If the monitor is in quad viewing mode, press **SEQ** and then **CAM** to return to full screen view.

NOTE: Before you install a camera, carefully plan where and how it will be positioned, and where you will route the cable that connects the camera to the power adaptor. Before starting permanent installation, verify its performance by observing the image on a monitor when the camera is positioned where it will be permanently installed. Cameras are rated for indoor installation only.

NOTE: When adding cameras that were not included in the original box, you will need to pair up the camera with the receiver. Please refer to the camera pairing section of the User Manual.

WIRELESS VIDEO HOME MONITOR

LW2400/LW2450 SERIES

QUICK START GUIDE

NOTE: This system supports a USB connection to your PC/Mac to enable remote monitoring using Skype™. Refer to the user manual for detailed set-up instructions.



C. Video Monitor Setup

1 Insert the included microSD card, as indicated on the right side of the video monitor.



2 Connect the power adapter to a power outlet, and to the video monitor or charging cradle. If you use the cradle, ensure the video monitor firmly rests on the cradle. The video monitor's charging LED indicator glows red to indicate charging is in progress.



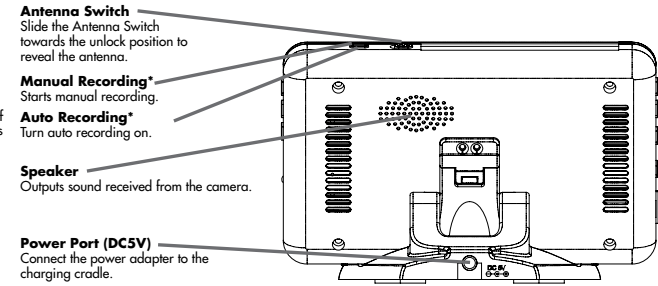
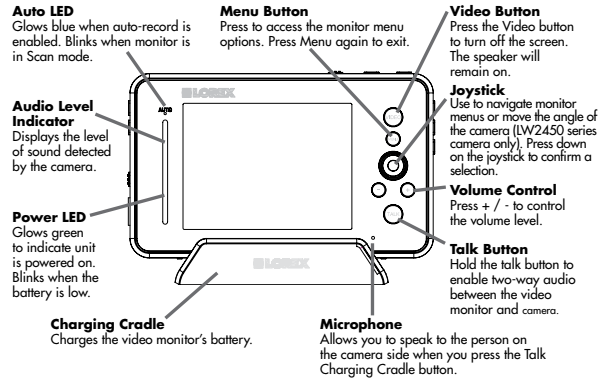
3 Slide the power switch up to the **ON** position. The video monitor will automatically scan for cameras in range.



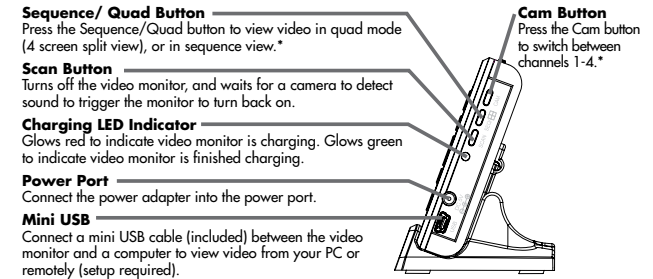
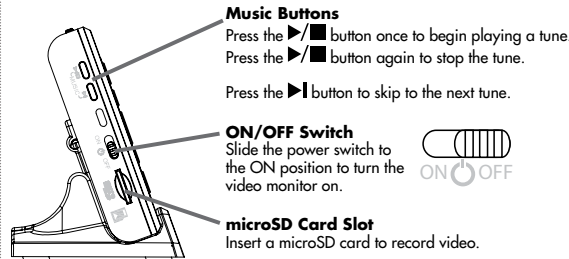
4 The power indicator LED glows green when the monitor is powered on. When the battery is low, the power LED blinks.



D. Video Monitor Overview



* Requires microSD memory card



*Requires multiple cameras. Accessory cameras sold separately (model # LW2401AC1, LW2451AC1)

This product is **EXPANDABLE UP TO 4 CAMERAS.**

To order additional cameras, please visit our website at www.lorextechnology.com

It's all on the Web

For detailed setup information, please refer to your User's Manual. For additional information and accessory purchases, please visit our website

www.lorextechnology.com/support

