

NVR User Manual



www.ZMOD0.com

NVR User Manual
For further help, please visit www.zmodo.com

Introduction

This product series is a 4 channel embedded NVR with pentaplex functionality: the product will perform video audio live preview, recording, playback, remote access, and backup simultaneously. This advanced product series receives a high quality video stream that is transmitted digitally by the IP Camera (IPC). This video signal is encoded by the NVR and enabled for recording, viewing, configuring, and playback. This document mainly focuses on the installation and configuration of NVR LAN application system. With high performance audio & video, user-friendly GUI, and practical industrial designs; this series NVR is suitable for civil applications such as homes, stores, internet cafes, and small businesses in addition to mainstream security and surveillance applications.

Declaration

- The content in this manual may be different from the product version you are using. If you experience any issue that is not mentioned in this manual, please contact our tech-support or product supplier.
- The software will be updated as necessary. Our company reserves the right to update without notice.

Target Reader

This manual is primarily intended for the following users:

- System planner
- Onsite tech-support and maintenance personnel
- Administrator for system installation
- Users for business operation

Conventions

- Click: Refers to left-click with your mouse
- Double click: Refers to left-double-click with your mouse
- Right Click: Refers to right-click with your mouse
- Square brackets "[]" indicates the window name, menu name and data sheet, such as [Download]

Catalog

1 INTRODUCTION	2
1.1 Brief Introduction	2
1.2 Main Functions and Features.....	2
1.3 Installation Instructions	2
1.4 Installation & Wiring	4
2 USE INSTRUCTION.....	6
2.1 Login	6
2.2 Menu introduction.....	7
2.3 Main Menu operation	9
2.4 Record.....	9
2.5 Playback	11
2.6 Backup	12
2.7 Alarm Setting.....	12
2.8 IPC Management	14
2.9 System Setting.....	16
1) Basic Setting	16
2) Network Parameter	17
3) Channel Loop	18
4) Advanced Setting.....	19
5) Device storage management	19
6) User Management.....	20
7) Automatic maintenance setting	22
2.10 System Information	23
3 APPENDIX	25
3.1 SPECIFICATIONS	25
3.2 System Default Values	25
3.3 Other Explain	27

1 INTRODUCTION

1.1 Brief Introduction

This product series is a 4 channel embedded NVR with pentaplex functionality: the product will perform video audio live preview, recording, playback, remote access, and backup simultaneously. This advanced product series receives a high quality video stream that is transmitted digitally by the IP Camera (IPC). This video signal is encoded by the NVR and enabled for recording, viewing, configuring, and playback.



1.2 Main Functions and Features

- > Support Mouse & IR Remote Controller;
- > Support VGA-IPC Bound Connection;
- > Support 4-Channel VGA-IPC Stream Input and Forwarding;
- > Obtain Video Parameter of Front-device IP Camera;
- > Multiple Recording Modes;
- > Built-in SATA Interface, Support SATA HDD between 80GB and 2TB of storage;
- > Support USB Backup through USB Flash Disk, USB Removable Hard Disk and USB
- > Preview & Playback, Support VGA Video Resolution;
- > Support Linkage Channel Picture Enlarge, Audio Alarm, Report to the Alarm, Email Alert and FTP Upload;
- > Support TCP/IP Protocol & DDNS;
- > Auto Maintenance, Update and Restore to Factory.

1.3 Installation Instructions

Check the Package Content

When you receive the product, please check the equipment and accessories according to the packing list in the package box.

Front Panel Instruction

Table 0-1 Front Panel Description

Type	Name	Description
LED	POWER	Power indicator: Red, lights when the power is on
	HDD	Hard Disk Drive indicator: Blinks red when the HDD recording or reading. Remains off at other conditions.

Rear Panel Instruction

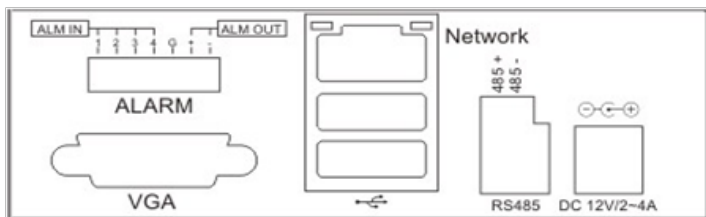


Table 0-2Rear Panel Description





NO.	Interface	Description
1	VGA Output	1: DIN-15
	Alarm Input	4 Channel Input
	Alarm Output	1 Channel Output
2	Network Interface	1 : RJ45 10/100M
	USB Interface	2: USB 2.0
3	RS485	1: Send & Receive Data, half-duplex interface (+ -)
4	power	DC 12V

Remote Controller

Table 0- 3 Remote Controller Description

NO.	Name	Discription
1	Power	Turn on/off the device
2	Rec	Start/Stop recording
3	NO. (1-9)	<ul style="list-style-type: none"> • Input numbers in the editable box • One key channel selection in preview mode • One key channel selection in playback mode, and enlarge the single-channel screen
4	NO.10+	<ul style="list-style-type: none"> •Apply for group use to choose channels above 10 in preview mode •Apply for group use to choose channels above 10 in playback mode, and enlarge the single-channel screen
5	NO.0	Input 0 in the editable box
6		Backspace, delete input in the editable box
7		Direction: Left
8		Direction: Right
9		Direction: Up
10		Direction: Down
11	OK	1) Press to confirm in menu mode 2) Shift key to choose recording type in recording schedule 3) Change the attributes of motion detection area while setting the areas of motion detection
12		Switch from single screen and multi-screen in preview mode



	13	MENU	Enter the main menu of setting interface
	14	ESC	Return or exit operations
	15	BACKUP	Backup video files
	16	CLEAR	Cancel alarm under alarm status
	17	SEQ	One key for channel touring according to the touring settings; Press to pause and restart while touring
	18		1. preview mode: pop out playback interface; 2. playback mode: shift between play and pause
	19		Playback mode: Stop play
	20		Playback mode: fast rewind
	21		Playback mode: fast forward

1.4 Installation & wiring

Hard Drive Installation

A Hard Disk Drive is not installed by the manufacturer unless the item is specifically purchased with a HDD. The user may install a SATA HDD between 80GB and 2TB of storage after receiving.

Hard Drive Installation procedure

1. Open the NVR top cover while the NVR is unplugged from its power source, take out the damping washers in the screw bag, and then put the 4 damping washers into the clamping slots (four protruding steps) in the case;
2. Connect the SATA data cable and HDD power cord to HDD;
3. Lift up the hard drive with your hand, and turn over the case to make sure that the four holes at the bottom of the case correspond to the hard drive mounting holes, and then fix the hard drive using four 4 M3*12 Head Screws plus plain washers;
4. Connect the SATA data cable and HDD power cord to the backplane;
5. Close the cover, and fix the case with screws.

Note1: Please select the video surveillance dedicated hard drive that recommended by the hard drive manufacturer, in order to meet the requirements of long time & large amount of data read and write. Besides, please purchase from the official channels to ensure the quality of the hard disk.

Note2: Please format HDD for the first use, or system will send error notification of "Hard disk error" accompany with audio alarm.

Wiring Instruction

Connect to the Power Supply

You should first make sure that the AC voltage connected with the NVR power adapter matches with the requirements. And then connect the power adapter to power input interface of NVR, the power indicator on the front panel will light on, indicating the power is connected right.

Note: Please use the power adapter included in the package to avoid any damage to the equipment.

*Network Access

The device provides a standard RJ45 interface, which can easily access the LAN or WAN.

During the network connection, you should provide sufficient bandwidth to ensure the fluency and clarity of the images transmitted over the network.

***Connect to the Alarm Input and Output Devices**

The alarm input device should be the type of GND connected alarm or voltage input alarm, which can be set as N/O. or N/C.

The requirements of voltage alarm signal input level: low level: 0-2V; high level: 5-15V.

The green angle pins are supplied for access of PTZ and alarm devices. Wiring steps are as below:

- (1) Pull out the angle pins that inserted in the alarm input and output interfaces;
- (2) Unscrew the screws using micro Philips screwdriver, insert the signal cable into interface under spring, and then tighten the screws;
- (3) Plug in the connected pins into green angle pin socket.

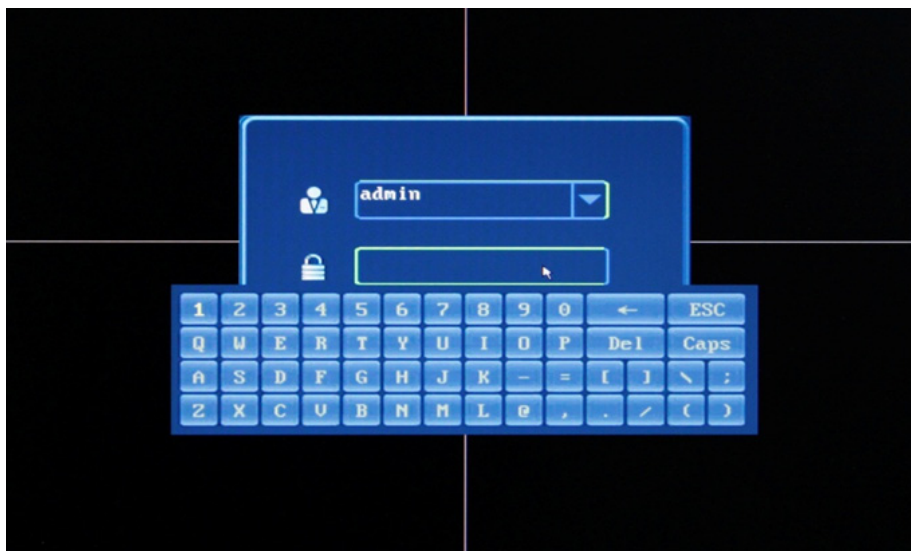
***Connect to the Video Output Device: VGA Monitor**

2 USE INSTRUCTION

2.1 Login

Starting Up

The Power LED on the front panel will light in red after complete the wiring. Press 【Power on/off】 button to start up device. The preview screen will then display. The login window will pop up by either pressing 【ESC】 button on front panel or remoter, or right clicking the mouse. Select user and the corresponding password to login.



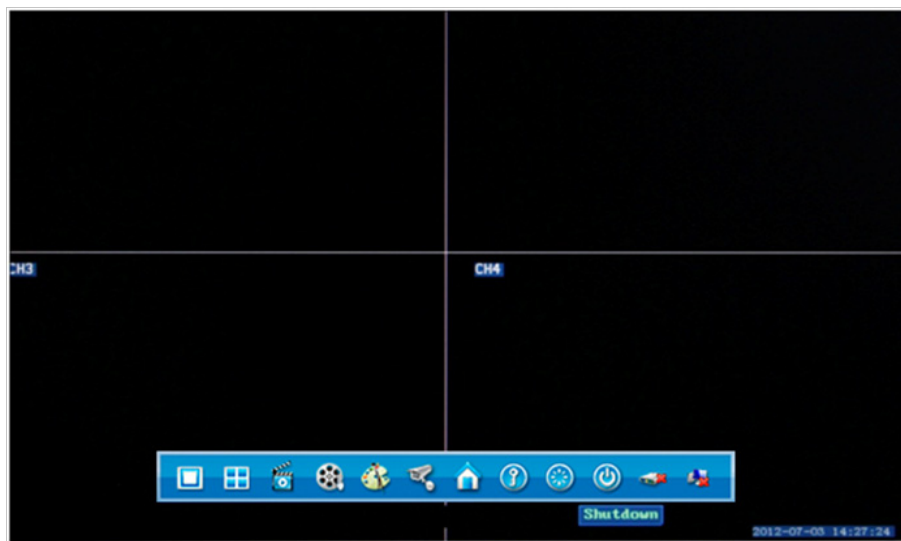
Note1: Please allow the NVR up to two minutes to fully initialize.


Note2: Modify password by selecting <Tool Bar>→<System>→<System Setting>→<Password Setting>.Set as indicated, new password will take effect instantly.


Note3: Default password for admin is 111111. Default password for User is admin. Admin password can be restored to factory default by short connect the terminals on main board JP1 port. Admin user can modify the user's password after login. The system supports up to 8 users, admin is the administrator user with all permissions, whose name cannot be deleted or changed. The admin user can add and delete all other users and the permissions corresponding.


Note4: "No Hard Drive" will prompt if you start up the device without hard drive, and you can choose whether to enable a buzzer or not when no hard disk.

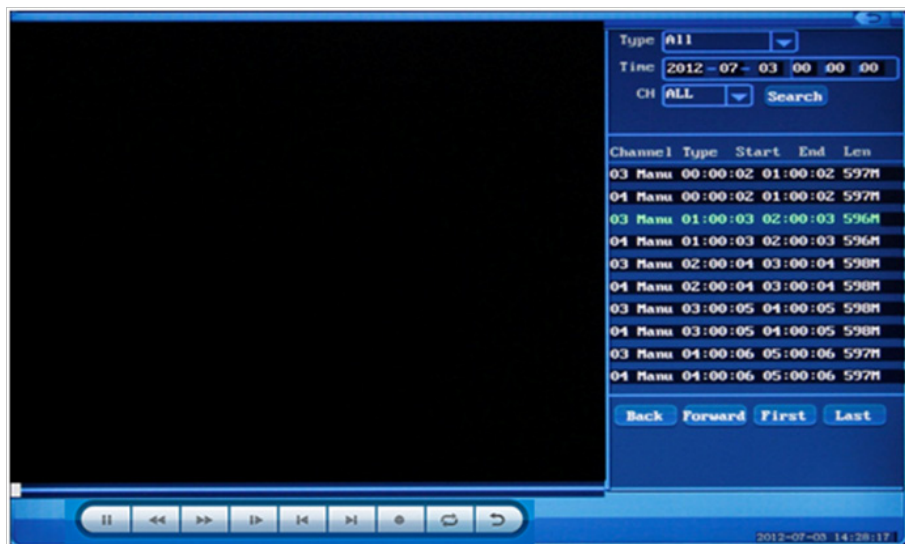
2.2 Menu introduction




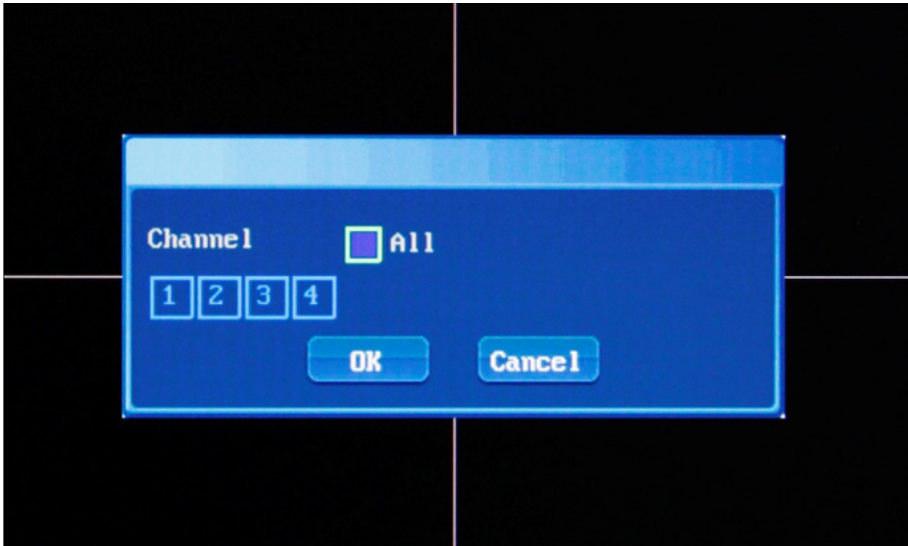
[Single]: Click , full screen display the current chosen single channel video footage. Double click one channel video footage to display this channel video footage on full screen, Double click once again to display four channel video footage.


[Four]: Click , display all four channel video footage.

[Playback]: Click , enter video playback interface. Refer to video playback setting (can set parameters such as type, specific time period and channel number).




[Manual rec]: Click  to record on single channel or all IP cameras.




[Color setup]: Click  to choose different channel, and set on parameters of brightness, contrast and gray level.





[Main menu]: Click  to enter the main menu interface.

[Lock]: Click  to lock the NVR. The user must re-enter their username and password to un-lock the NVR.

[Restart]: Click  to restart the NVR.

[Shut down]: Click  to shut down the device.

[Hard drive status]: Click  to check and manage hard drive storage capacity and status.

[Network]: Click  to check network connection status.

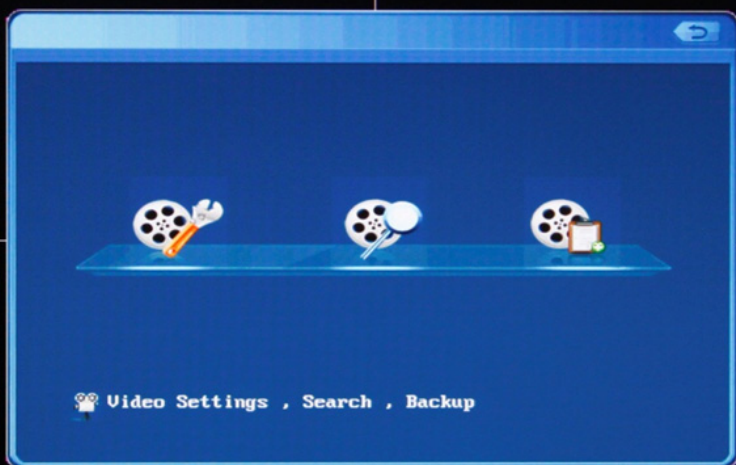
2.3 Main Menu operation




2.4 Record

[Video Recording]: Click  to set recording parameters.

Sub-menu interface are as follows:



Click  to set recording parameters.

channel


Type WeekDay

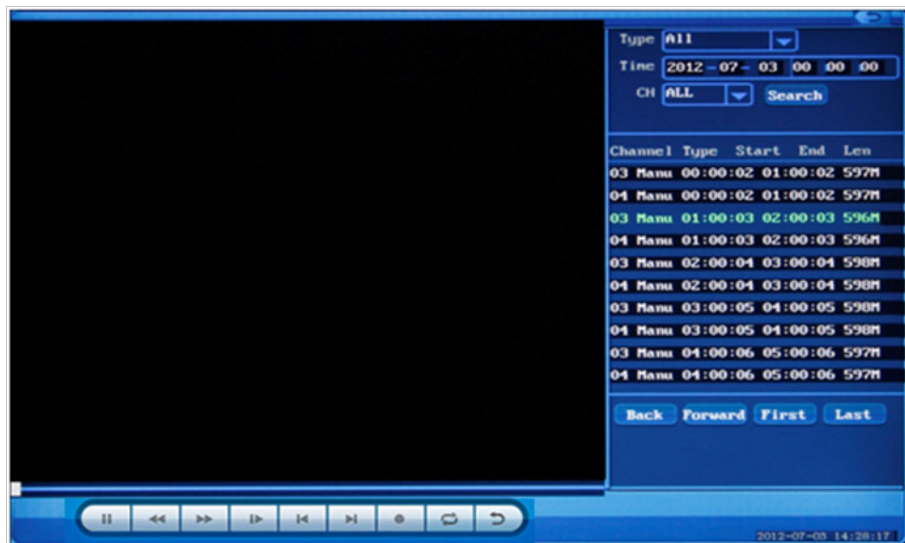
time1 ☐ time3 ☐

time2 ☐ time4 ☐

- (1) Select channel;
- (2) Select the type of recording (Schedule: scheduled recording/Alarm: alarm triggered recording);
- (3) Select the time period you want to record;
- (4) Select the start and end time for recording, and the total recording time.

2.5 Playback

[Playback]: Click  to playback (time period, type, ICP).



Note: You can playback the specified IPC of a specific time point.

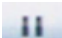






Back: the previous page

Forward: the next page


First: the first page

Last: the last page

Search: You can search the video by the combination of time, type and channel.

- 1) Click  to pause or play.
- 2) Click  to fast forward.
- 3) Click  to slow playback.
- 4) Click  to return to the last video.
- 5) Click  to go to the next video.
- 6) Click  to stop.
- 7) Click  to loop playback.

2.6 Backup

[Backup]: Click  to backup the video file automatically.



Note: To generate a backup file of the specific time period of specified channel.

Time: the specific time point need to backup

First: the first page

Back: the previous page

Forward: the next page

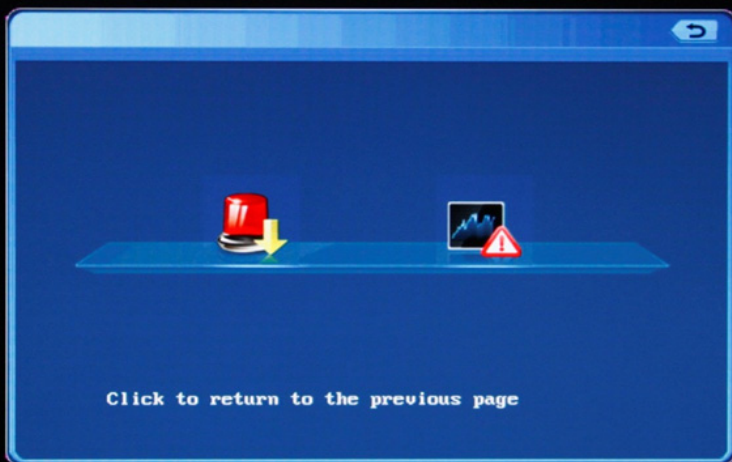
Last: the last page

Backup: backup the file

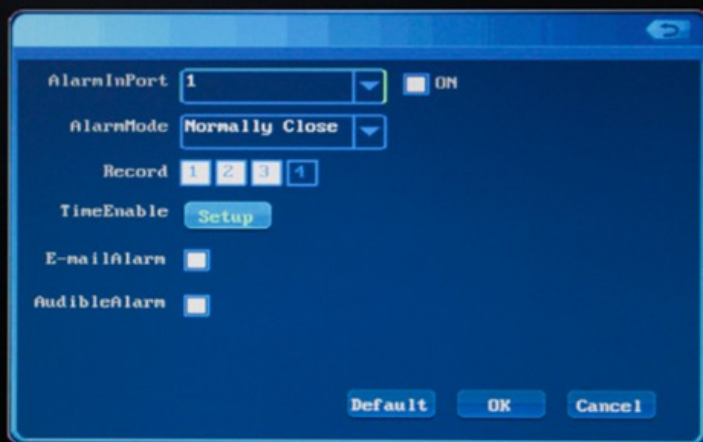
2.7 Alarm Setting

[Alarm Recording]: Click  to set the alarm recording.


Sub-menu interface are as follows:

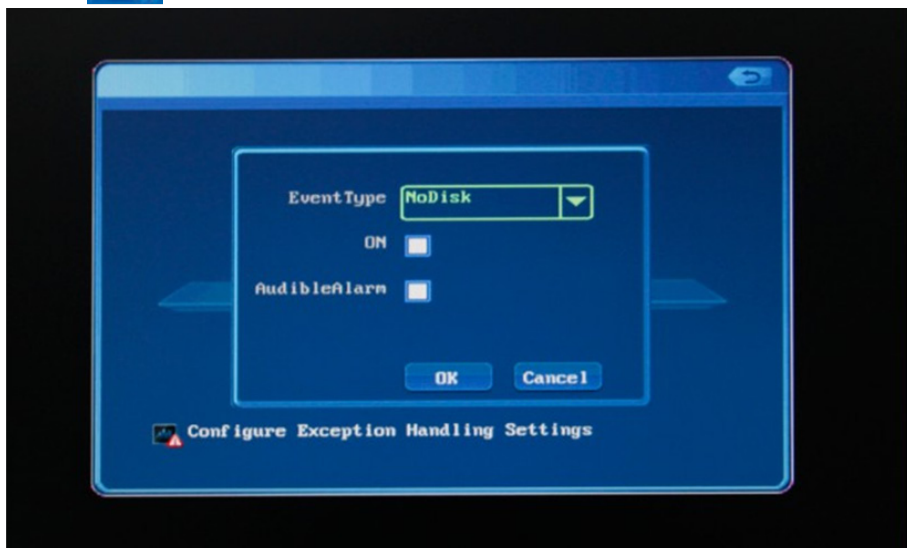


- 1) Click  to enter Preset menu.



- Steps:
- (1) Enter the setting interface;
 - (2) Select the alarm mode: normally-on/normally-off;
 - (3) Set the specified channel to record;
 - (4) Set the type of alarm (E-Mail or sound).


- 2) Click  to enter the Exception Menu.

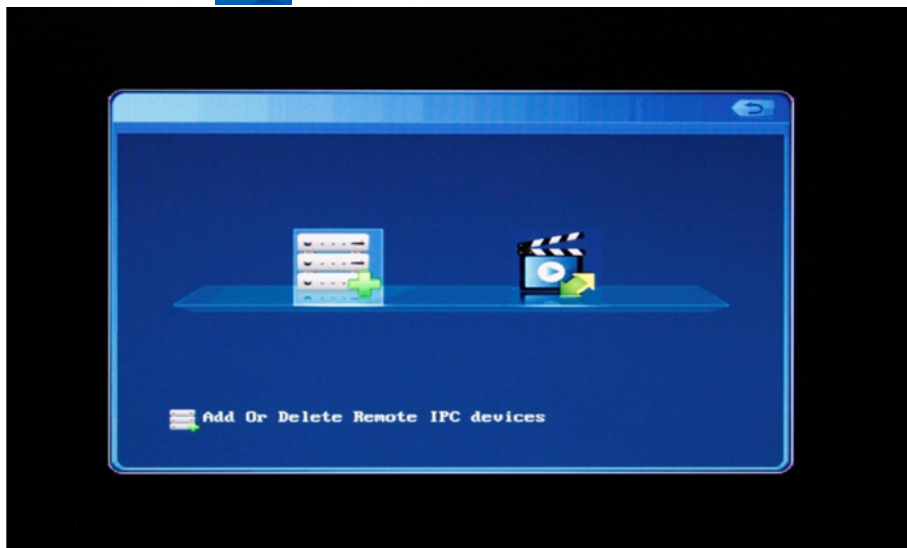




(1) The types of abnormal situation: 1. No Disk 2. Hard Disk Error 3. No Space.

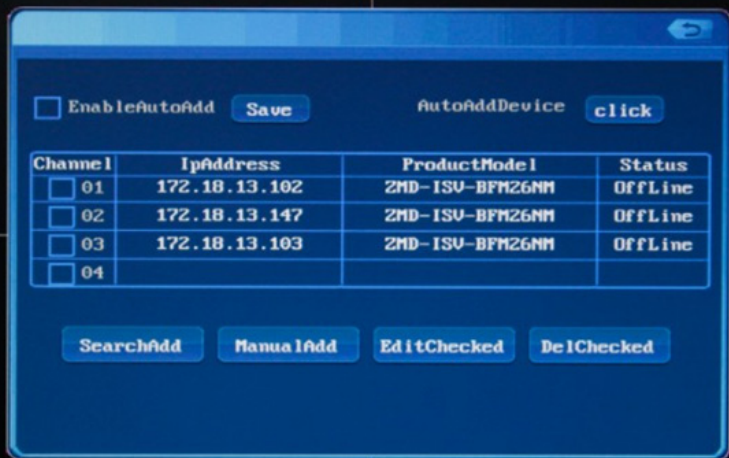
Note: You should first click the small icon to close the small window, and then click the close icon to close the whole screen

2.8 IPC Management

[IPC Management]: Click  to manage the devices remotely



1) Click  to add devices(you can apply shortcut key of  to enter this interface).




Channel	IpAddress	ProductModel	Status
<input type="checkbox"/> 01	172.18.13.102	ZMD-1SV-BFM26NM	OffLine
<input type="checkbox"/> 02	172.18.13.147	ZMD-1SV-BFM26NM	OffLine
<input type="checkbox"/> 03	172.18.13.103	ZMD-1SV-BFM26NM	OffLine
<input type="checkbox"/> 04			

Buttons: SearchAdd, ManualAdd, EditChecked, DelChecked

Top controls: ☐ EnableAutoAdd, Save, ☐ AutoAddDevice, click

Choose automatic adding after enter the interface, or add device manually (only under the circumstance that there is no device to manage in the channel). You can only select one of the channels, and click "AUTO" to update the added device automatically. You can also delete the devices in the same interface by select the channel and click "DEL" to automatically delete the devices.

2) Click  for the encoding setting.



ChannelTitle: ☐ TimeTitle: ☐

Channel: CH01 ChannelName: CH1

	MainStream	SubStream
Enable	<input type="checkbox"/>	<input type="checkbox"/>
videoQuality	Bett	Bet
FrameRate(FPS)	30	20
Resolution	25	10
StreamType	25	10

Buttons: Default, OK, Cancel

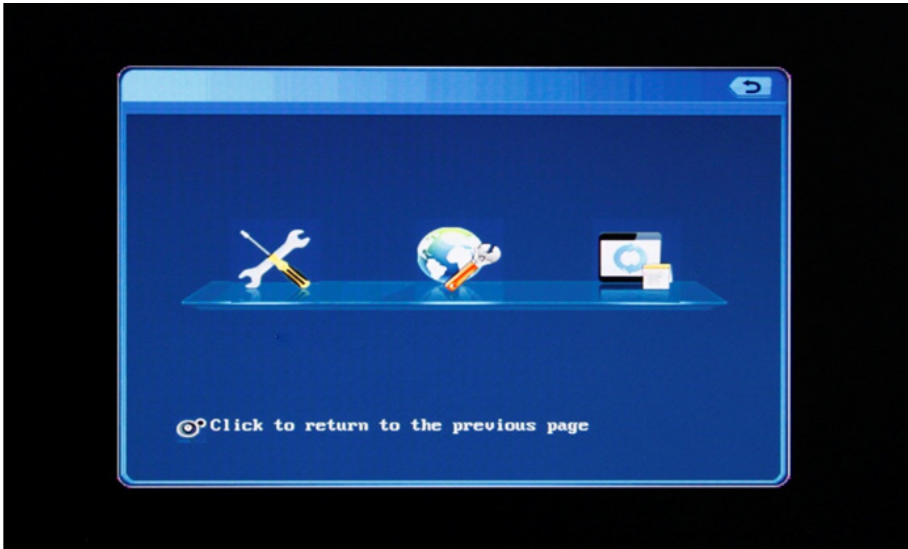
Enter the menu and chose the channel that you intend to adjust. When the Channel Title check-box is selected, the channel number will display on the channel screen. When the Time Title check-box is selected, the time will display on the channel screen.

Enter video format >>choose video quality >>frame rate (according to the network speed of that very day)>>Video Audio (open or close Selectable)


2.9 System Setting

[System Setting]: Click  for system setting.

Sub-menu interface are as follows:



1) Basic Setting

Click  to enter the System Settings Menu.

The screenshot shows a configuration window titled "Date and Time". It contains the following fields and options:

- Date and Time:** 2012-07-10 15:05:36 (with a "Save" button next to it)
- Date Format:** YYYY-MM- (dropdown menu)
- Time Format:** 12hours (dropdown menu)
- Video Format:** NTSC (dropdown menu)
- Resolution:** 1280x1024 (dropdown menu)
- length:** 15 mintes (dropdown menu)
- Presco:** 09 second
- Alpha:** 7 (spin box)
- Storage:** SD (dropdown menu)
- Disk Full:** Overwrite (dropdown menu)
- Language:** English (dropdown menu)
- Delay:** 08 second

At the bottom, there are three buttons: "Default", "OK", and "Cancel".

After enter the interface, user can set on date format, time format, video format, resolution, storage, disk capacity (when the hard drive is full, it will automatically cover the previous recording files) and language.

Note: Please do not set the resolution higher than what your current VGA monitor will support, doing so may cause the NVR to stop transmitting video to the monitor. If the resolution is by accident set higher than what the current VGA monitor will support, try temporarily connecting the NVR to a larger VGA monitor and lowering the resolution back to default setting.

2) Network Parameter



Click to set the network parameters.


The screenshot shows a configuration window titled "Network Parameters". It contains the following fields and options:

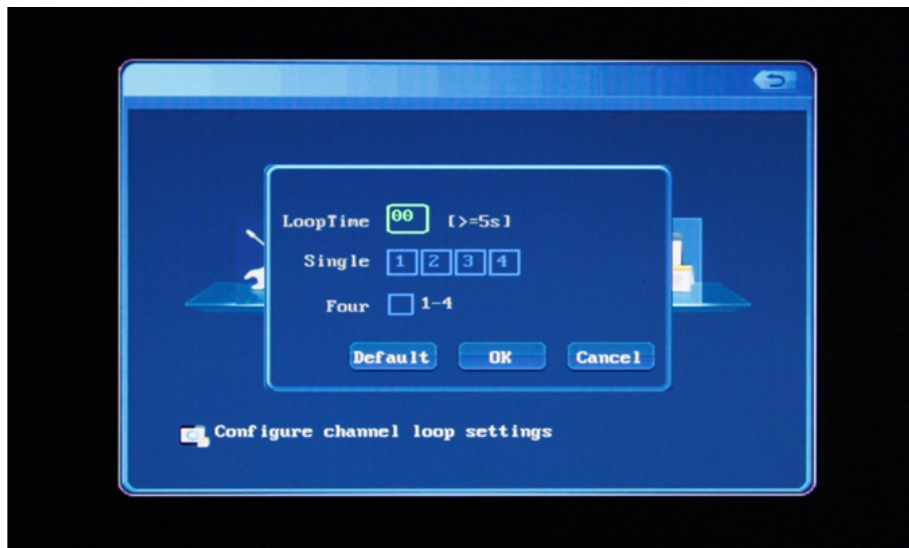
- ☐ Automatic Get IP
- IP Address:** 172 . 18 . 13 . 105
- Netmask:** 255 . 255 . 255 . 0
- Gateway:** 172 . 18 . 13 . 1
- Master DNS:** 4 . 4 . 4 . 4
- Slave DNS:** 8 . 8 . 8 . 8
- MAC Address:** 00 - 8B - 2A - 9E - EE - 05
- WebPort:** 8080
- VideoPort:** 8000
- PhonePort:** 8000

At the bottom, there are several buttons: "Default", "PPPOESettings", "DDNSSettings", "E-mailSettings", "UPNPSSettings", "FTPSettings", "OK", and "Cancel".

First input current IP address, Net mask, Gateway, Master DNS, Slave DNS, MAC Address, Web Port, Video Port and Phone Port.

3) Channel Loop

Click  to configure channel loop settings.



Note: Channel loop settings must be over 5 seconds.

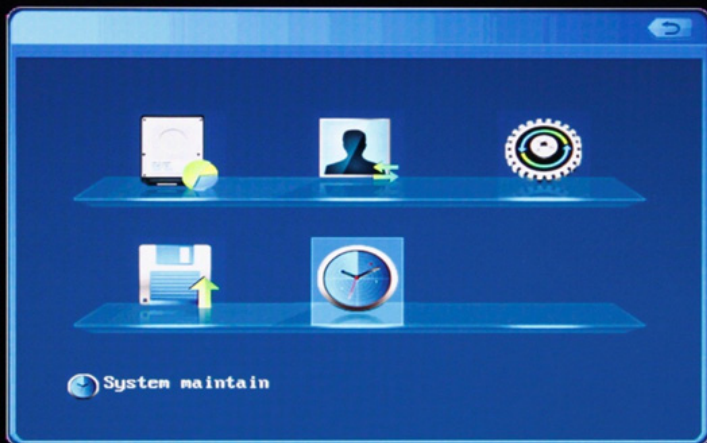
Click Single 1: channel 1 for loop play,
 2: channel 2 for loop play
 3: channel 3 for loop play
 4: channel 4 for loop play

Click Four: Loop play from channel 1 to channel 4


4) Advanced Setting

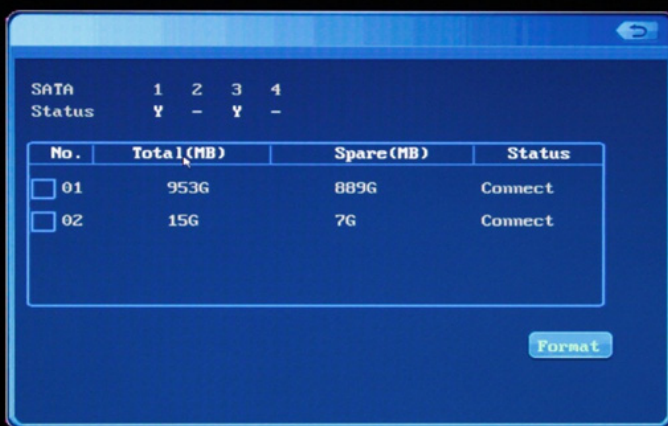
Click  for advanced setting.

Sub-menu interface are as follows:




5) Device storage management

Click  for device storage management.

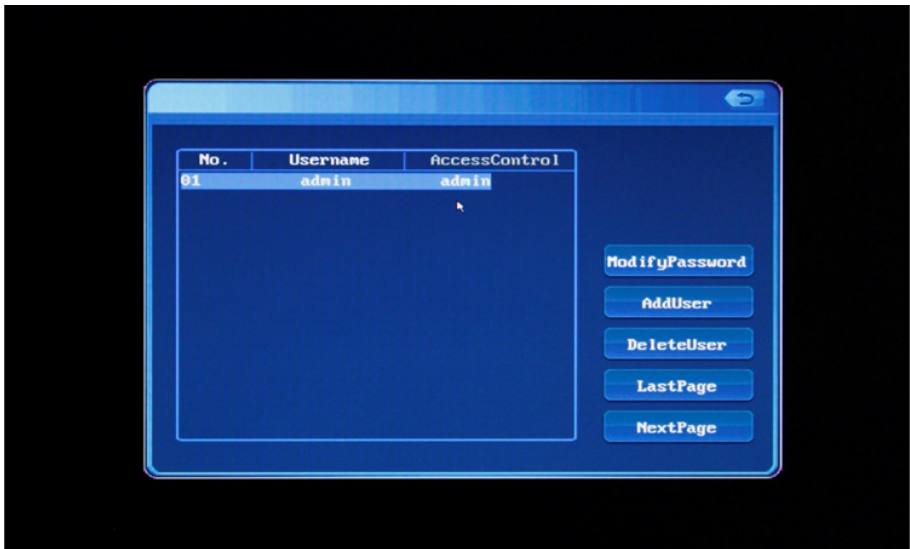


Note: Display the hard drive capacity in each channel, and format the hard drive.

6) User Management

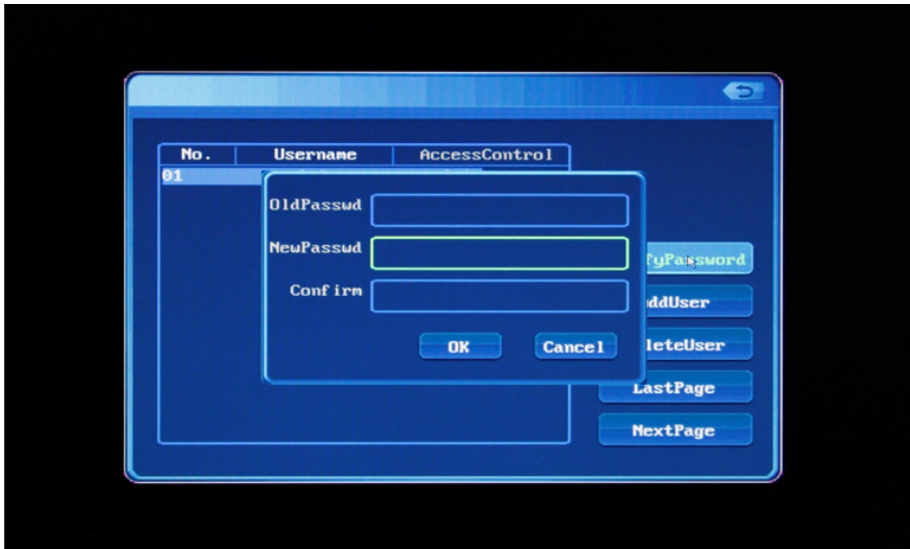
Click  for user management setting.

Sub-menu interface are as follows:

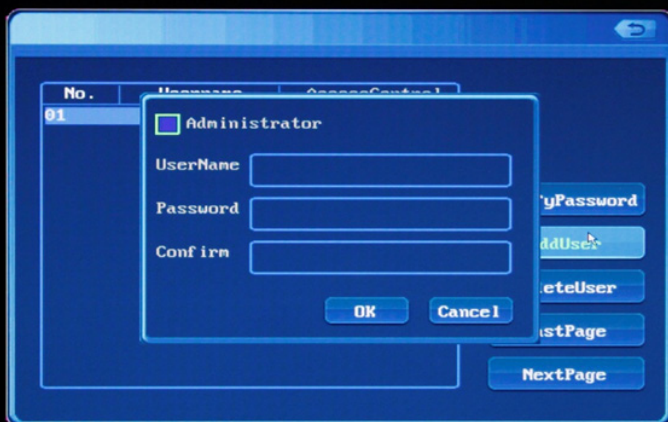


Note: Display channel username

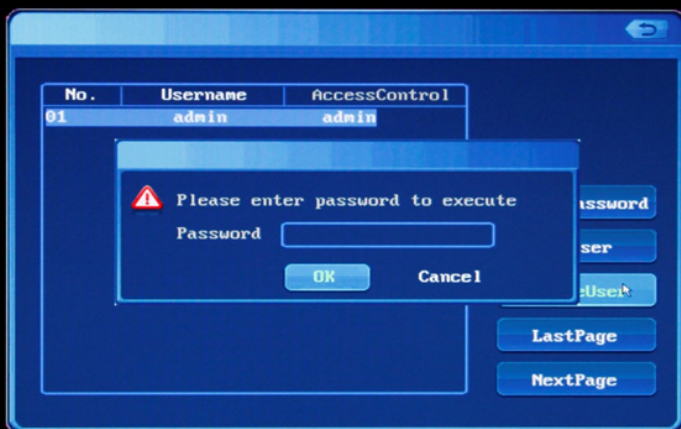
- 1) Click to enter Modify Password: User can modify the username and password (first type in the old password, and then type in the new password, last confirm the new password)





- 2) Click Add User to create new users (type in new username and password)

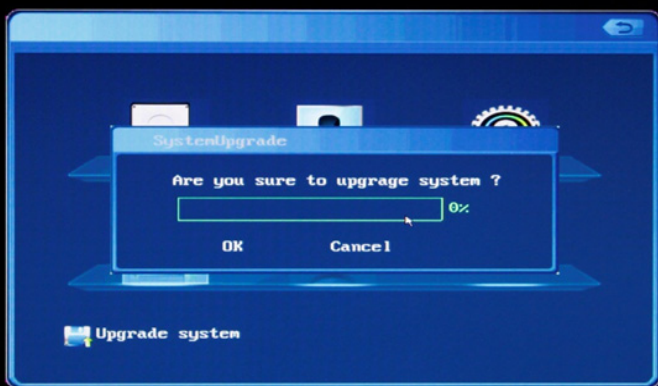


- 3) Click Delete User to delete users (need to type in the password first before next operation)




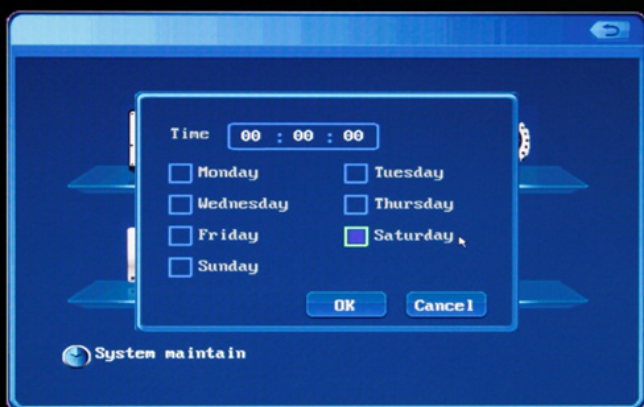
- 4) Click  to restore factory settings.

- 5) Click  for system maintenance(for updating firmware when applicable).



7) Automatic Maintenance Setting

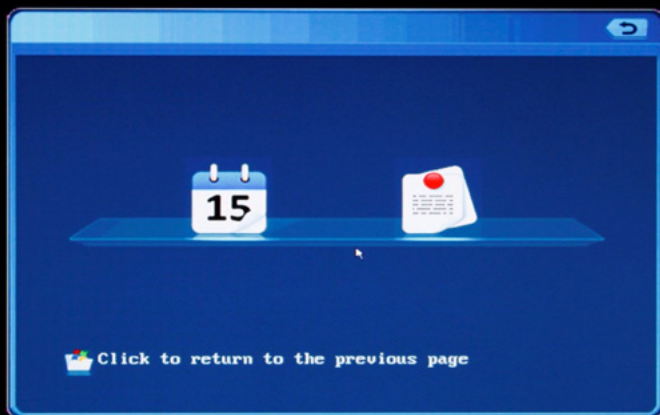
Click  for automatic maintenance setting(After setting, system maintenance will be implemented in the specified time).
 Attention: The system will reboot during system maintenance




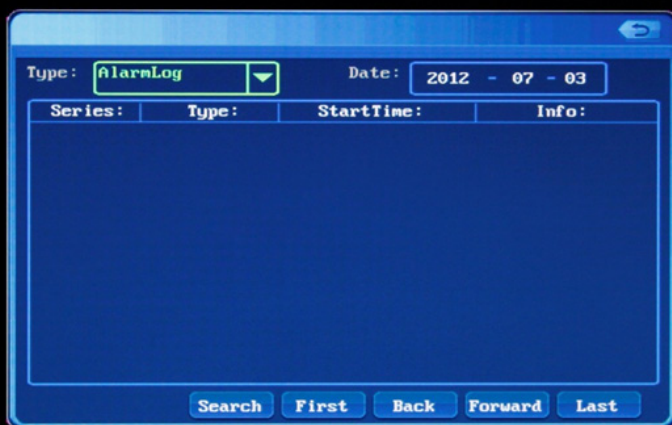
2.10 System Information

[System Information]: Click  to display system information.


Sub-menu interface are as follows:

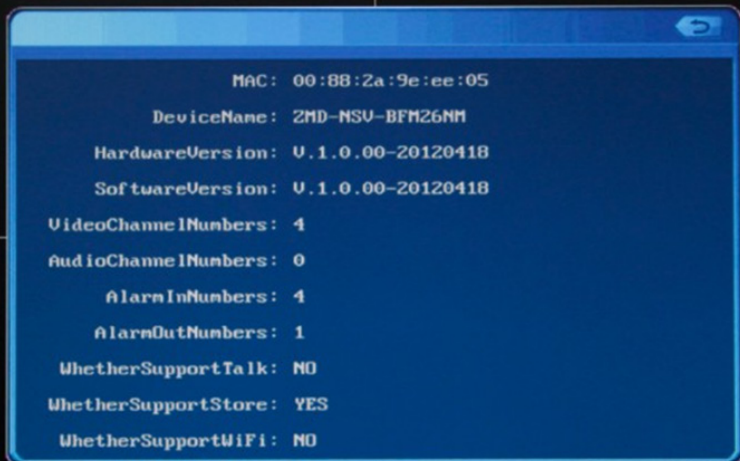


1) Click  for LOG data.



Note: user can choose LOG type and define the specific time (last LOG/next LOG/ the first page and the last page)

- 2) Click  to search system version information.



A screenshot of a system information window with a blue header and a blue background. The window displays the following system information:

```
MAC: 00:BB:2a:9e:ee:05
DeviceName: ZMD-NSU-BFM26NM
HardwareVersion: U.1.0.00-20120418
SoftwareVersion: U.1.0.00-20120418
VideoChannelNumbers: 4
AudioChannelNumbers: 0
AlarmInNumbers: 4
AlarmOutNumbers: 1
WhetherSupportTalk: NO
WhetherSupportStore: YES
WhetherSupportWiFi: NO
```

3 APPENDIX

3.1 SPECIFICATIONS

Model	ZMD-NV-SBN4 -4 CH Standalone NVR
Video System	NTSC
Operation System	Linux Based
Video Output	VGA
Display Frame Rate	120fps @VGA
Display Resolution	800×600@60Hz, 1024×768@60Hz, 1280×1024@60Hz
Recording Frame Rate	120fps @VGA
Record Resolution	120fps @VGA
Record Mode	Manual / Time Scheduled / Alarm Triggered
Playback Mode	Normal Play /Fast Forward /Rewind /Slow Play
Network Function	Real-time Preview, Record, Playback, Download, NVR Setting, Upgrade, Mobile & Email Function
Network Interface	RJ45, 10M/100M
Net Protocol	TCP/IP, PPPoE, DHCP, DDNS
3G Mobile	Support mobile phone based on iPhone® 4.3 up, Android™ 2.2 up
Mobile Function	4 Channel Viewer / Channel Switch
Alarm Mode	Trigger Record, Email Alert, Audio Output, Alarm output
Sensor/Alarm	4 CH Sensor Inputs / 1 CH Alarm Output
HDD Interface	1 SATA HD, Support up to 2TB
USB Interface	USB 2.0, USB Backup, Mouse
Backup	USB Flash Disk, Removable HDD
Remote Control	IR Remote Control
Remote Access	LAN or Internet Browsing
Power Supply	DC12V, 3A
Dimension	8.66"x8.07"x1.57"
Gross Weight	5.65lbs

3.2 System Default Values

Items		Options in Menu	Default
System Settings	LANGUAGE	Simplified Chinese,English	English
	Video Standard	PAL,NTSC,SECAM	Auto adjust
	VGA Setting	800×600@60Hz ,1024×768@60 Hz,1280×1024@60 Hz	1280×1024@60Hz
	Time Format	12 hours, 24 hours	24 hours
	Time Setting	No menu options, click directly into sub-menu settings	Year-month-day hour : minute PM
	DST	OFF/ON, choose directly into sub-menu settings	OFF
	Password Setting	No menu options, click directly into sub-menu settings	Password: 111111 User:admin
	HDD Overwrite	ON/OFF	ON
	Add User	No menu options, click directly into sub-menu settings	
	Delete User	No menu options, click directly into sub-menu settings	
	Authority Management	No menu options for current user, click directly into sub-menu settings	Current User: admin
Record Settings	Schedule	No menu options, click directly into sub-menu settings	24 hours recording
	Color Setting	brightness, contrast, & saturation: 128\46\128\64	3/35/127
Network Settings	Network	Static IP,Dynamic IP, PPPoE	Static IP
	IP Address	No menu options, click directly into settings	192.168.0.101
	Subnet Mask	No menu options, click directly into settings	255.255.255.0
	Gateway	No menu options, click directly into settings	192.168.0.1
	HTTP Port	No menu options, click directly into settings	80

	Media Port	No menu options, click directly into settings	8000
	PPPoE Setting	ON/OFF; No menu options, click directly into settings	OFF
	PPPoE Address	No menu options, display IP address when PPPoE dial-up successfully	0.0.0.0
	DNS Address	No menu options, click directly into settings	202.96.134.133
	Dynamic Domain Name	No menu options, click directly into settings	OFF
	Email Setting	No menu options, check the settings directly	
	Mobile Port	No menu options, click directly into settings	9000
	UPnP Setting	Click directly into sub-menu settings	OFF
	FTP Setting	Click directly into sub-menu settings	OFF

3.3 Other Explain

Client Supported Versions:

Android 2.2up and iPhone 4.3up; please choose the smart phone of these version.

