

# Thermal Touch: Thermography-Enabled Everywhere Touch Interfaces for Mobile Augmented Reality Applications

Daniel Kurz\*  
Metaio GmbH

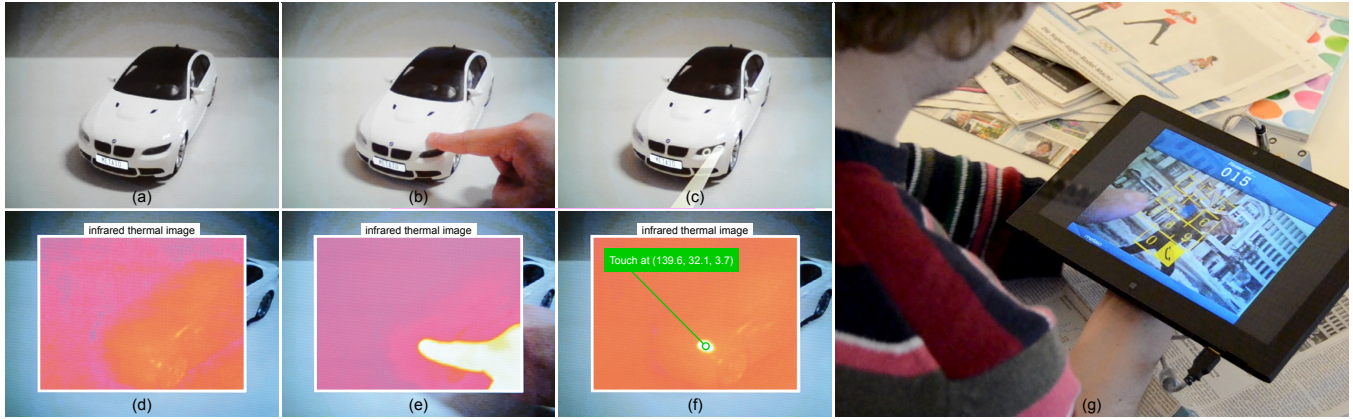


Figure 1: We turn real objects into touch interfaces for Augmented Reality (a-c) by detecting residual heat at the touched surface on the object using an infrared thermographic camera (d-f). Arbitrary surfaces become touch interfaces by augmenting spray-on graphical user interfaces (g).

## ABSTRACT

We present an approach that makes any real object a true touch interface for mobile Augmented Reality applications. Using infrared thermography, we detect residual heat resulting from a warm fingertip touching the colder surface of an object. This approach can clearly distinguish if a surface has actually been touched, or if a finger only approached it without any physical contact, and hence significantly less heat transfer. Once a touch has been detected in the thermal image, we determine the corresponding 3D position on the touched object based on visual object tracking using a visible light camera. Finally the 3D position of the touch is used by human machine interfaces for Augmented Reality providing natural means to interact with real and virtual objects.

The emergence of wearable computers and head-mounted displays desires for alternatives to a touch screen, which is the primary user interface in handheld Augmented Reality applications. Voice control and touchpads provide a useful alternative to interact with wearables for certain tasks, but particularly common interaction tasks in Augmented Reality require to accurately select or define 3D points on real surfaces. We propose to enable this kind of interaction by simply touching the respective surface with a fingertip. Based on tests with a variety of different materials and different users, we show that our method enables intuitive interaction for mobile Augmented Reality with most common objects.

**Index Terms:** H.5.2 [User Interfaces]: Input devices and strategies—Graphical user interfaces; H.5.1 [Multimedia Information Systems]: Artificial, augmented, and virtual realities—Evaluation/methodology

\*e-mail: daniel.kurz@metaio.com

## 1 INTRODUCTION

The concept of Augmented Reality (AR) involves more than rendering virtual objects overlaid onto reality. Being a user interface, AR should also allow for interaction of the user with both virtual and real objects. The most commonly used type of Augmented Reality is video see-through AR, where both virtual information and a (real-time) image of a real object or environment are shown on a display. On handheld devices, such as smartphones and tablet PCs, the displays are usually touch screens. As a result, the majority of user input and user interaction in handheld AR is realized using these touch screens. Interaction elements, such as buttons or sliders, can be either attached to the screen coordinate system or they can be attached to the coordinate system of any real object, if the pose of the object relative to the camera is known. Such elements can then for example be used to change the state, position, color, or size of virtual objects. Another common approach to manipulate the position, orientation, or size of virtual objects is based on touching them on the screen. While dragging an object on the screen might change its position in 3D, multi-touch gestures, such as pinching, might change the scale.

In any case, these user interfaces are not always natural and intuitive because the user physically interacts with a screen (in 2D) instead of interacting with an actual real object or environment (in 3D). Another reason to consider alternatives to touch screen-based user interfaces for Augmented Reality is the fact that wearable computers and lightweight HMDs become increasingly important, and they often do not have a touch screen. This raises the need for novel means to interact with real objects and digital information associated with them in Augmented Reality applications.

Probably the most natural way for humans to interact with an object is to touch it with their hands. This is also frequently used in AR to change the viewpoint of a camera towards a real object. Translating or rotating real objects enables exploration of virtual objects attached to them from different perspectives and therefore is a fundamental part of interaction in AR. In this paper, however,

we are interested in interaction tasks that require the selection of a certain point in 3D space, or more precisely: on the surface of a real object. Example use cases include triggering virtual buttons or sliders attached to real objects, placing virtual items or characters in an environment for gaming, or marking defects on an object in a maintenance scenario, so a worker can localize and fix them later on. We aim at enabling this by simply touching the surface of a real object at a desired position with a fingertip.

This paper proposes to use infrared thermography, which provides the pixel-wise temperature of the captured environment, in combination with a visible light camera to turn any real object into a touch interface. The visible light camera is used to keep track of the position and orientation of the object while the thermal camera allows for detecting touches. We do so by determining the thermal energy a surface of an object emits after it has been touched (and thereby heated up locally) by a fingertip. While infrared thermal cameras are currently expensive, they will become affordable and ubiquitous in handheld devices as well as wearable computers in future, which makes the proposed method widely applicable.

## 2 RELATED WORK

Interaction in Augmented Reality is a wide and widely studied field, and this section will particularly focus on human computer interfaces that involve hands in free space or interaction of hands with physical uninstrumented surfaces.

Hand pose estimation, tracking, and gesture recognition has been frequently used for interaction with augmented desktop systems, in which a video projector displays digital information on a static and planar surface. A variety of approaches to hand tracking are based on instrumenting the hand or fingertips, e.g. using gloves [15]. However, it is clearly more desirable to interact with bare hands. There is a whole body of work focused on detecting and tracking hands based on visible light cameras [1], e.g. by skin color matching. These approaches are sensitive to illumination, which is a severe limitation not only in video projector-based setups but also for mobile applications that need to work anywhere. One illumination-invariant approach to track bare hands and fingertips for projector-based augmented desk interfaces [14, 11] uses thermal imaging to segment the warmer hands from the colder background.

In fact, in this paper, we are not aiming at detecting and tracking hands or fingertips, but we intend to reliably detect and localize *touches* between a fingertip and a real object or surface. This enables different kinds of interaction techniques which are based on defining 3D positions on the surfaces of real objects. For distant objects, e.g. walls, laser pointers can be used to point at a desired position on a surface, which can then be detected and localized by a camera, e.g. [7]. For real objects within reach, using the fingers appears to be the most natural and intuitive way for this task.

There are different approaches that try to detect fingers touching real objects, without instrumenting the hand or the objects. Occlusion-based methods, e.g. [9], detect if a certain area of a real object is occluded (by a hand) from the view of a camera and handle this case as if the area was touched. These methods, however cannot distinguish between occlusions and touches and thereby put heavy constraints on user interfaces. For example, considering a number pad as shown in figure 1 (g), it is impossible with occlusion-based approaches to trigger the button 5 without triggering at least one of the surrounding buttons beforehand.

Another method to detect touches uses a depth sensing camera to determine if fingers approach a real surface or object [17]. When mounted to a shoulder and combined with a wearable video projector, user interfaces may be projected onto arbitrary surfaces, including the user's hands and arms [2]. While the method can clearly distinguish between a finger occluding an object at a distance of many centimeters from a finger touching the object, this distinction is not reliable if the finger is less than 2 cm apart from the surface due

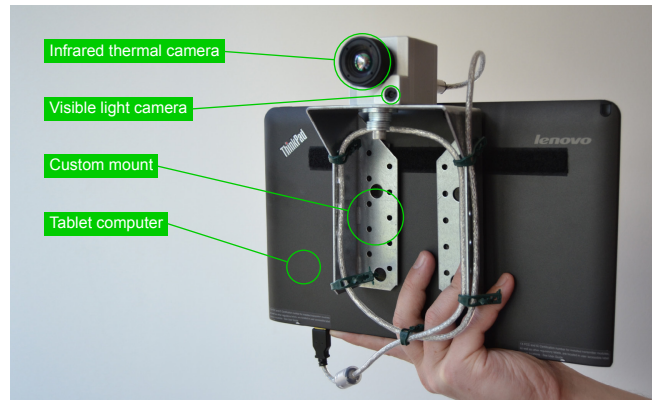


Figure 2: The hardware prototype used throughout this paper comprises a visible light camera and an infrared thermographic camera attached and connected to a tablet computer with a custom mount.

to noise in the depth image. Furthermore, the pursued method is sensitive to approach angle and requires fingers to be outstretched for proper detection. Additionally, assumptions are used, such as that the left-most point of a finger is the fingertip, which work for their shoulder-mounted setup, but are not generally applicable. Another approach to determine a finger touching a surface is based on detecting the pressure applied to the fingertip. Different pressures result in visibly distinct patterns of blood volume or perfusion beneath the fingernail, which can be imaged and classified [10]. This approach does not work with opaque nail polish.

The approach most similar to the method proposed in this paper has been used in the context of static projector-based table-top setups. It attempts to localize touches between fingertips and uninstrumented (planar) surfaces by detecting the residual heat a touch leaves on the surface, using a thermographic camera [8, 6]. After calibration of the static setup, the approach proposed by Larson *et al.* [8] performs background subtraction in the thermal image followed by a segmentation of hands and localization of fingertips based on this segmentation. In the next step, a classifier determines for all pixels that were in the vicinity of detected fingertips in the current or recent frames, if the pixel captures residual heat as a result of a touch or not. The employed classifier is based on smoothed temperature, temporal derivative of temperature, and background-subtracted temperature. Finally the method fits geometric primitives, such as lines, into the pixels classified as touched pixels accumulated over a number of frames.

A similar approach has been proposed by Iwai and Sato [6] to select magazines from a static scene by touching them with the hand. Selected magazines can then be made transparent in a projective table-top setup. Their touch detection method is also based on background subtraction in a thermal image and additionally considers the camera image of a visible light camera. This helps distinguishing between touches (where only the thermal image differs from the background image) and occlusions (where both the thermal image and the visible image differ from the background image). The fact that the methods proposed in [8] and [6] heavily make use of temperature samples of the same point at different points in time, makes it challenging for dynamic or mobile setups where both the object to interact with and the camera may freely move.

This paper looks into how this fundamental approach can be extended to be used in mobile AR applications dealing with freely moving 3D objects. Thereby the position of a touch needs to be determined in the 3D object coordinate system and user interfaces based on our proposed method may have a spatial relationship to the real 3D object. For example, such user interfaces may take advantage of existing haptic features on the surface of an object, such

as proposed in [3]. An example for such interfaces is shown in figure 1 (a-c), where touching the headlight of a miniature car causes an Augmented Reality application to visualize how the headlight looks when turned on. We believe that thermography-based interaction techniques, e.g. for image creation [5], will gain more attention in the near future not only because the hardware becomes available at low cost. Most importantly it provides unique and interesting properties, such as capturing residual heat, and beyond, e.g. capturing thermal reflection [13].

### 3 PROTOTYPE, CALIBRATION AND REGISTRATION

We built a handheld hardware prototype including a thermal camera and we developed a software prototype to evaluate our method and to implement demonstrations. In the following, we describe the hardware prototype and its calibration, as well as the object tracking framework we use, and which data it requires.

#### 3.1 Hardware Prototype and Calibration

Our experimental setup uses an optris PI 200 camera connected to a handheld tablet computer, as shown in figure 2. The camera rigidly combines a visible light camera, which provides RGB images at a resolution of  $(480 \times 360)$  pixels, and an infrared camera providing thermal images at a resolution of  $(160 \times 120)$  pixels. While the camera provides a larger temperature range and temperature resolution, our implementation uses temperatures discretized to a byte corresponding to a range of  $25^\circ\text{C}$ . The thermal images are corrected for radial distortions by the camera’s driver. Therefore our methods and all steps described in the following are performed on undistorted thermal images.

The intrinsic parameters of the visible light camera ( $\mathbf{K}_v$ ) and the thermal camera ( $\mathbf{K}_t$ ) as well as the 6DoF rigid body transformation between the two cameras ( ${}^t\mathbf{T}_v$ ) have been calibrated offline. For calibration, we built a checkerboard-like pattern that can be observed in both cameras, similarly as in [16]. This pattern enables gathering 2D-2D correspondences between the image of the visible light camera and the image of the thermal camera. We cut out squares from a piece of bright cardboard. When attaching the cardboard to a warm and dark object, such as an LCD screen in our case, the squarish holes in the cardboard will appear dark for the visible light camera because of the black LCD screen. They appear as warm squares in the infrared image, because the (turned on) LCD screen is warmer than the the cardboard. The 2D positions of the square corners were determined for a set of image pairs of both cameras taken from different viewpoints, as exemplarily shown in figure 3. This allows to calibrate the intrinsic parameters of both cameras individually using Zhang’s method [18] and consequently for determining the 6DoF rigid body transformation ( ${}^t\mathbf{T}_v$ ) between the two cameras. Figure 4 illustrates the involved coordinate systems.

The prototype was built due to the lack of suited devices being available off the shelf. In the near future, consumer handheld devices will be equipped with infrared thermal cameras and visible light cameras and therefore provide a comparable hardware setup at a more attractive form factor and price. Our method will be even more relevant in practice once wearable computers and head-mounted displays, that do not include a touch screen for interaction, are equipped with low-cost thermographic cameras.

#### 3.2 Object Tracking and Required Models

As described above, we aim to detect the position of a touch not in a 2D image coordinate system but in the 3D coordinate system of a real object (or environment). This requires knowledge of the transformation of the real object relative to the camera.

We use a natural feature-based object tracker, which is part of the Metaio SDK<sup>1</sup>, to determine the position and orientation of an

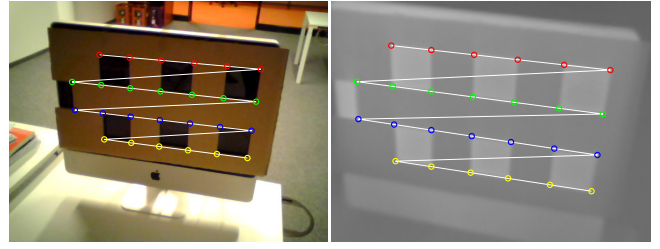


Figure 3: The checkerboard-like pattern we use to calibrate the visible light camera (left) and the infrared thermal camera (right).

object relative to the visible light camera in real-time. For planar objects, the required *tracking model* of an object is a fronto-parallel image while for general 3D objects either a map of 3D points with associated feature descriptors or a 3D edge model can be employed. We use and consider the object tracking framework as a black box which takes a (visible light) camera image and a tracking model as input and provides the 6DoF pose  ${}^t\mathbf{T}_o$  of the object in the coordinate system of the visible light camera.

For each object, our proposed method additionally requires a model of the touchable surfaces of the object, which is parametrized as a triangle mesh in our implementation. This *surface model* is not used for object tracking but is only needed to determine the position of a touch on the object. The accuracy and level of detail of the surface model controls the accuracy of the resulting touch position. Planar rectangular objects, which are commonly used in AR applications, can be fully described with only two triangles.

### 4 TOUCH DETECTION

Our approach to detecting the touch between a fingertip and a real object requires solving two problems. Firstly, we need to detect such a touch in the thermal image, and the second problem is to determine the corresponding 3D position in the object coordinate system. We first have a look at the temperature profiles of surface points in case they are touched, occluded, or not interacted with.

#### 4.1 Temperature Profiles for Different Cases

Over a sequence of consecutive images, a surface point captured in the thermal image might reveal the following temperature profiles.

**Object Only:** The measured temperature remains relatively constant at the temperature of the object, when only imaging the object throughout a sequence.

**Hand Only:** While imaging the hand, the temperature measured in a pixel corresponds to that of a hand and only changes moderately over time.

**Occlusion by Hand:** When imaging the object and then a hand occluding the object, a sample in the thermal image will first represent the temperature of the object. Then, after occlusion, it will immediately and rapidly change to the temperature of the hand. Once the occluding hand leaves the sample, its temperature again rapidly changes to the object temperature.

**Touch by Hand:** A sample in the thermal image capturing a touch between a hand (e.g. finger tip) and an object, first measures the temperature of the object, followed by a rapid change to the temperature of the hand once the finger occludes the object. While touching the object, the finger keeps occluding the touched surface of the object and the measured temperature remains relatively constant. Once the finger is released, the temperature of the sample point will rapidly decrease to a temperature between the temperature of the hand and the temperature of the object. It will then smoothly converge back to the initial temperature of the object.

<sup>1</sup><http://www.metaio.com/sdk>



## 4.2 Touch Detection in the Thermal Image

The methods proposed in [6] and [8] to detect residual heat resulting from a touch between a hand and a surface in a thermal image are designed and well-suited for projective table-top setups, where the thermal camera is static with respect to the (planar) surface, i.e. real object. Particularly the approach described in [8] includes smoothing the thermal image over time, background calibration, combining segmentations from subsequent images, and temporal derivatives of temperature, which all require temperature samples of the same surface points at different points in time. In their static setup, these samples simply correspond to a single static pixel position in the thermal image.

In our dynamic setup, where both the camera and the object may move, object tracking, as explained in section 3.2, provides the pose of the object relative to the visible light camera. By concatenating this transformation with the calibration between the two cameras as explained in section 3.1 we are able to sample a 3D point on the surface of the object in the thermal image during motion. Due to unpreventable small inaccuracies both in the pose provided by the object tracking and in the calibrated transformation between the two images, collected temperature samples, however, will not correspond to the same point (or area) on the surface but represent different points scattered around the intended sample position. Another challenge here is that thermal and visible light images are not perfectly synchronized.

Furthermore the approach of [8] uses a classifier to determine for every pixel the probability that the pixel captures residual heat. The per-pixel result may include residual heat of any shape and size and can then be further processed, e.g. by fitting lines to it for stroke-based interaction. In contrast, we are only interested in detecting a single touch by a fingertip.

We propose an approach to detect the residual heat caused by a touch between a fingertip and a real object that is based on a single thermal image and utilizes object tracking to constrain detection to warm areas of a certain physical size and shape on the surface, which corresponds to the size of a fingerprint. Our approach is designed such that it works with different materials having different thermal conductivity and such that it is invariant to the temperature of the touched object. Our description of what to search for is based on three assumptions about a touched surface area:

- Its temperature is lower than that of a hand and higher than that of the object.
- Its shape is reasonably circular.
- Its physical area corresponds to that of a fingerprint.

Our proposed method starts by determining the minimal temperature  $t_{min}$  and the maximal temperature  $t_{max}$  which is captured in at least 5 pixels of the thermal image. Our assumption is now, that  $t_{max}$  corresponds to the temperature of the hand while  $t_{min}$  corresponds to that of the object. If no hand is present in the camera image, the two determined temperatures will be more similar to each other and the following steps shall not detect any touches.

According to section 4.1, pixels imaging residual heat as a result of a touch should now have a temperature significantly lower than  $t_{max}$  and higher than  $t_{min}$ . Particularly we are interested in a connected circular region of pixels in the desired temperature range that has an area similar to that of a fingerprint. Note that given the pose (at physical scale) obtained from object tracking, we are capable of converting any physical distance on the object into the corresponding pixel distance in the thermal image.

We use OpenCV's SimpleBlobDetector [4] to localize bright circular blobs in the thermal image. The detector is based on binarization of the image and we constrain the thresholds used for binarization to an intensity (i.e. temperature) range of  $[t_1, t_2]$  and require that detected blobs should have an area in the interval  $[a_1, a_2]$ ,

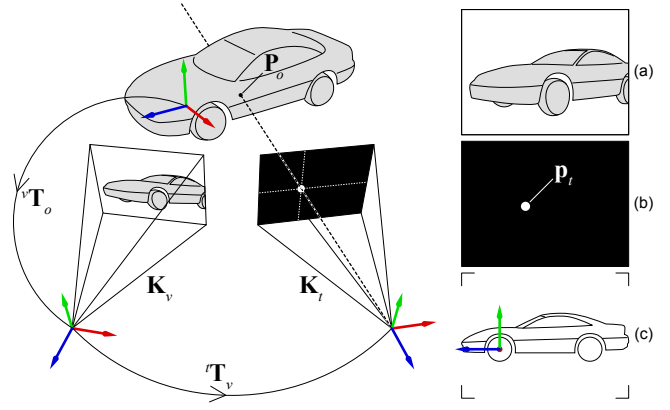


Figure 4: Illustration of the involved coordinate systems and resources: a visible light camera image (a), a thermal camera image (b) and a model of the real object to interact with (c).

which corresponds to the size of residual heat resulting from a fingertip touching a colder surface. The parameters we use were found experimentally and are as follows.

$$t_1 = (1 - \frac{1}{16})t_{min} + \frac{1}{16}t_{max} \quad t_2 = (1 - \frac{3}{8})t_{min} + \frac{3}{8}t_{max}$$

$$a_1 = 0.32 \text{ cm}^2 \quad a_2 = 1.54 \text{ cm}^2$$

The blob detector then returns a set of circular regions (blobs) with their respective positions in the thermal camera image. We exclude blobs with a center closer than 10 pixels to the image boundaries, because fingers entering and leaving the image may result in false positive detections in these regions. Because we are interested in detecting a single touch, we also reject all detected blobs in case more than one has been detected in a single image.

The touch position  $p_t$  in the coordinate system of the thermal image (cf. figure 4 (b)) is defined as the center of the remaining detected blob (if any). This position then needs to be transformed to the coordinate system of the real object resulting in the 3D position of the touch  $P_o$ . This finally enables natural interactions with the real object and virtual information attached to it as will be elaborated with different examples in section 6.

## 4.3 Determining the 3D Touch Position

Given the 2D position of a detected touch  $p_t$  in the thermal image, we make use of the object tracker explained in section 3.2 to determine the corresponding 3D position  $P_o$  on the surface of the real object. The object tracker takes the visible light image (figure 4 (a)) and a tracking model of the real object to determine the 6DoF rigid body transformation  ${}^vT_o$  from the object coordinate system to the coordinate system of the visible light camera. Concatenating this transformation with the calibrated transformation  ${}^tT_v$  from the coordinate system of the visible light camera to the thermal camera results in the transform  ${}^tT_o$  from object coordinate system to the thermal camera's coordinates.

To determine the 3D position of the touch in the coordinate system of the object, we intersect a ray from the origin of the thermal camera transformed to the object coordinate system piercing through  $p_t$  to find the first (3D) intersection of the ray with the surface model (figure 4 (c)) of the object. If such intersection exists, then it corresponds to the three-dimensional position of the touch  $P_o$  and can serve as input to any Augmented Reality user interface.

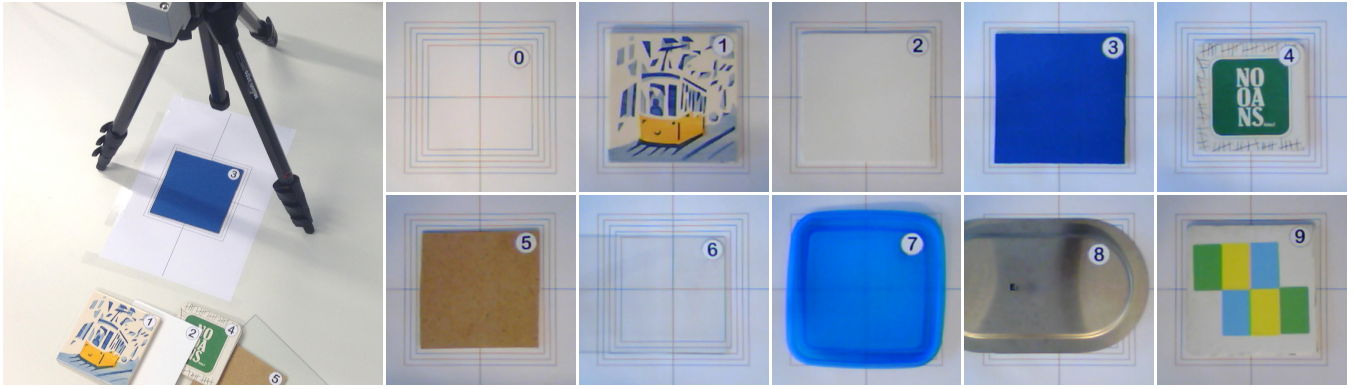


Figure 5: Different materials used in our evaluation: paper on a plastic table top (0), ceramic (1), rigid PVC (2), foam plastic (3), cardboard (4), laminated fiber sheet (5), glass (6), thin plastic (7), steel (8), multi-layer board (9).

## 5 TEST DATASET AND EVALUATION

The approach described in the previous section is designed to cope with objects of different materials and at different temperatures. It should also work for different users that might have different finger temperatures and their touches may differ in terms of dwell time and pressure. To evaluate how well our proposed touch detection algorithm works in realistic situations, we created a test database of infrared thermal image sequences of different people touching the surfaces of different materials at different temperatures.

### 5.1 Ground Truth Test Dataset Acquisition

The setup and the objects acting as material samples to acquire a test dataset are shown in figure 5. The material samples include paper, plastics, glass, and metal, and they were placed on a table such that they are centered with the camera, which has been attached to a tripod at a distance of about 300 mm from the table top.

Four subjects performed the test in an office environment with an air temperature of about 25°C, while another group of four subjects performed the test outdoors at an air temperature of about 12°C. All material samples were kept in the respective test environment for at least half an hour before starting test runs to make sure their temperature adapts to the air temperature.

Each subject was instructed to wait for an audio signal indicating that capturing starts and then perform an action. For each material the first action to be performed was moving the hand over the material sample without touching it. In the second run, the subjects were asked to press the material sample at the center as if it was a physical keyboard button. There were no instructions on which finger or which hand to use and the subjects could freely choose how to approach and leave the object.

For all subjects, materials, and actions, we save sequences of 400 infrared thermal images at a frame rate of 96 Hz with corresponding timestamps to disk and label them according to subject, material, and performed action. For each sequence, we furthermore manually label *ground truth*, i.e. the position of the center of the touch in the coordinate system of the thermal image and the point in time when the touch ended, i.e. the finger stops touching the object. An ideal touch detector would not only provide an accurate touch position, but also report a touch immediately after it happened with as little delay as possible.

Figure 6 shows single images from the recorded sequences of six different people touching material 0 in the office environment. As can be seen in figure 6 (e,f), two people had fingertips that were not significantly warmer than the object or even colder. While this is something to keep in mind for future work, we excluded the sequences of these two people from all further analysis and they are not part of the 8 subjects that contributed to the test dataset.

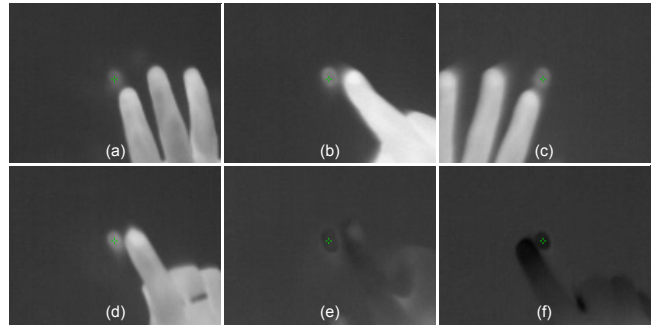


Figure 6: For most subjects, a warm fingertip leaves a warm fingerprint at the touched object (a-d). However, some subjects have a fingertip temperature similar to the air temperature of 25°C (e) or even below that temperature, leaving a cold fingerprint (f).

### 5.2 Evaluation and Results

It is crucial for the usability of any interaction method that it works as the user expects it to work. In the context of our approach to detect touches, it is very important that there are few false positives (i.e. touch detection even though no touch occurred). Furthermore, it is important to achieve a high rate of true positives, i.e. that actual touches are being detected.

In the following, we first evaluate how our proposed method performs in this respect on the test dataset described above. We then evaluate the accuracy of our proposed method. The question of which kinds of interaction this method can be used for strongly depends on the accuracy of the determined touch position. While triggering buttons or selecting parts of an object only requires accuracy to the size of the button or part, positioning of virtual objects in the real environment or slider interfaces require a higher accuracy.

#### 5.2.1 Evaluation on the Test Dataset

We exclude all sequences of material sample 8, i.e. steel, from further evaluation simply because our method does not work at all for this material. Due to its high thermal conductivity, residual heat disperses very fast within the material making it impossible to detect it using our method. All remaining sequences are loaded from files and each frame is processed individually by our touch detection method described in section 4.2. We consider a detected touch correct (i.e. a true positive) if it occurred after the manually labeled ground truth point in time when the finger is released from the surface, and if the detected position differs from the labeled ground truth position by not more than 5 pixels.

Table 1: Evaluation results: true positive (TP) and false positive (FP) touch detections on the test dataset with different materials (Mat.).

Sequences with a touch										
Mat.	0	1	2	3	4	5	6	7	9	all
TP[%]	100	100	100	75	100	100	50	87.5	100	90.3
FP[%]	0	0	0	0	0	0	25	0	0	2.8
Average error: 1.995 px						Average delay: 0.190 s				
Sequences without a touch										
Mat.	0	1	2	3	4	5	6	7	9	all
FP[%]	0	12.5	0	25	37.5	0	0	25	12.5	12.5

The results for the dataset excluding material 8 (steel), leaving 144 sequences of 8 subjects and 9 materials, can be found in table 5.2.1. For the 72 *sequences with a touch*, the touch could be correctly detected in 65 sequences, which corresponds to 90.3%. A touch at a wrong position was found in 2 sequences (5.56%) which both show material 6 (glass) in the outdoor environment. In these sequences the attached circular sticker for numbering the materials is erroneously detected, because it appears warmer than the glass, which reflects the cold sky. In 7 sequences our method could not detect the touch. In these sequences, the contact between the finger and the object is relatively short and therefore insufficient thermal energy is transferred. The average delay between finishing a touch and its detection is less than 200 ms and therefore sufficient for many tasks that do not require immediate response.

The number of false positives within the *sequences without a touch* is relatively high at 9 of the 72 sequences (12.5%). These false positive detections find actual heat blobs in the thermal image, which are due to touches that happened before the sequence starts, e.g. while placing and arranging the material sample under the camera. This shows a problem which could be solved by background subtraction as proposed in [6, 8] or other means that are better suited for dynamic scenes and mobile applications in future.

## 5.2.2 Accuracy and Precision in Object Coordinates

As given in table 5.2.1, we computed the error of the detected position with respect to ground truth, which is slightly below 2 pixels on average. This measure is however not very meaningful firstly because the ground truth position is not clearly defined and has been manually labeled. Secondly, this value corresponds to the error in the image, whereas it is most important how the accuracy of our method is in the coordinate system of the object including the impact of inaccuracy of the user, inaccuracy of the object tracking, and inaccuracy of the calibration.

To evaluate the relevant accuracy in a realistic setup, we used the application shown in figure 1 (right), which places ten buttons corresponding to all digits on a tracked surface and enables touching them. All buttons have a size of  $(25 \times 25)$  mm and there is no spacing between them. In this case we used a predetermined planar object with a predetermined tracking model at a known physical size as the surface to interact with. We store the positions at which touches were detected for 10 runs, where in every run each button was touched once in a predefined order with the index finger of the left hand approaching from the bottom left. The resulting positions are plotted in figure 7 together with large black crosses which indicate the centers of the buttons. We observe an average error of 7.81 mm where the smallest error over all 100 touches is 0.95 mm and the largest error is 11.98 mm. As can be seen from figure 7, the detected touch positions corresponding to a particular button are inaccurate (i.e. not centered around the correct position) but they are relatively precise (i.e. they are clustered). The standard deviations within the touches of the individual buttons are all less than 3.5 mm.

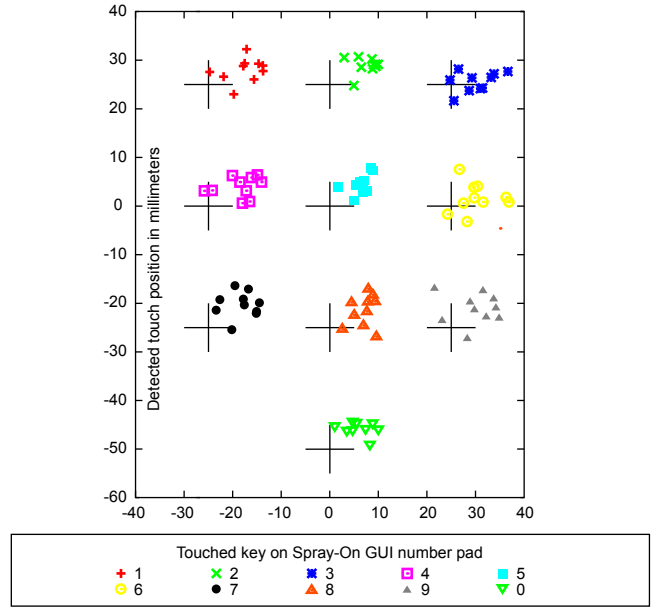


Figure 7: Positions of detected touches when typing numbers on a virtual number pad using our proposed method. The centers of all buttons are shown as black crosses.

The observed error distribution suggest that there is a systematic error, which most likely results from inaccuracies in the intrinsic and extrinsic parameters of the thermographic camera and therefore can be accounted for with an improved calibration procedure. Nevertheless the achieved accuracy is sufficient to select (square) buttons at an interval of 25 mm. This is not significantly more than the distance between the keys of a traditional QWERTZ keyboard, which is 19 mm for many commonly used models. As will be elaborated in section 6, many applications do not require millimeter-precise positional input and therefore can benefit from our proposed method right away.

The accuracy of detected touches has been evaluated for planar objects only, but we assume that our method provides similar results for generic 3D objects given that the thermal camera captures the touched surface more or less orthogonally to the optical axis. The reason is that our method does not distinguish between planar and non-planar objects.

Note that this experiment not only measures how accurate our touch detection works but also the capability of users to accurately touch given points with their fingertip.

## 6 POTENTIAL APPLICATION FIELDS

There are many potential applications for our proposed method to turn virtually any real object into a touch interface in the context of Augmented Reality. The supplementary video showcases prototype implementations of three ways how AR applications can take advantage of our method. While the hardware prototype we use is based on a tablet PC and therefore handheld (see figure 2), the application fields are mainly targeted towards wearable computers and head-mounted displays where no touch screen is available.

The software prototypes run on the Windows 8 operating system and are based on the Metaio SDK, which is an Augmented Reality software development kit combining the object tracking functionality explained in section 3.2 with the capability of creating a 3D scene of virtual objects and displaying the scene overlaid on the live camera feed. The application examples either use arbitrary surfaces to interact with or rely on specific and known planar or three-dimensional objects, for which a tracking model exists.



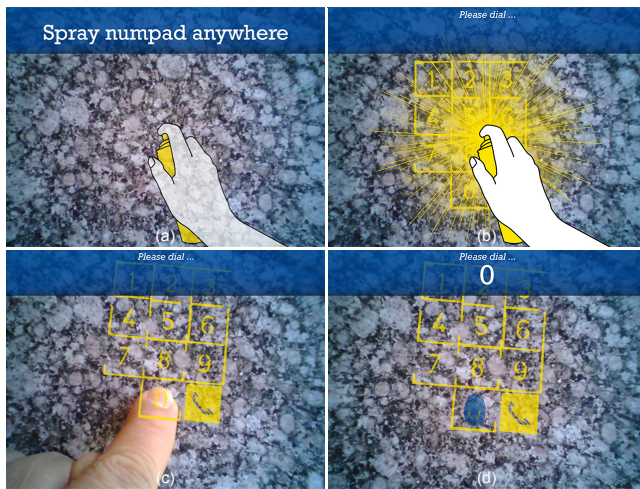


Figure 8: Spray-on GUIs enable ad hoc manual input on any previously unknown nearby surface.

**Spray-On GUIs** Certain interaction tasks, such as typing in a number, require a surface to type on, but it is not important which surface it is. No matter if the user is at home or on the go, any nearby surface, such as a wall or a table top, can be used for interaction. If virtual buttons are sprayed onto a surface the position of these buttons in the coordinate system of the object which includes the surface is arbitrary.

We therefore use so called *instant tracking*, which creates a reference image of the object to track on the fly while virtually spraying the GUI, see figure 8 (a,b). While this is currently triggered by tapping on the screen, it could be solved for example using voice input for wearable computers. Once the number pad has been sprayed on the surface, it sticks to the surface while the camera may freely move around. After one of the sprayed-on buttons has been touched on the physical surface (figure 8 (c)), the touch is detected in the thermal image and its position in the coordinate system of the numpad is determined. This position is finally mapped to the corresponding pressed number, as shown in figure 8 (d).

In fact there are some limitations in the current prototype: firstly the surface to interact with needs to be planar and have some texture such that the visual object tracker may keep track of it. Secondly, we use an assumption on the physical size of the surface corresponding to the on-the-fly reference image used for tracking and we assume the camera's optical axis is perpendicular to the surface at the time the reference image is taken. Because the thermal and the visual camera do not share the same optics, they have a baseline and consequently require tracking in real scale. However, our assumptions can be easily replaced by measurements of the physical scale and orientation of the surface in a hardware setup including a depth sensing camera in the future.

**Augmented Floor Plans** Printed floor plans usually only contain brief information on each room. By simply touching a room on a floor plan of a shopping mall, our prototype in figure 9 provides detailed digital information on the corresponding shop, such as opening hours, and contact information. As opposed to printed information, the augmented information can always be up-to-date and potentially user-generated (i.e. customer reviews).

In this use case, there is no need to render any virtual buttons or GUI registered with the floorplan, but we use existing printed shapes of the floor plan as buttons instead. Therefore, object tracking needs to be performed in a known coordinate system and consequently requires an a priori tracking model of the real object, which in this case is a fronto-parallel image.

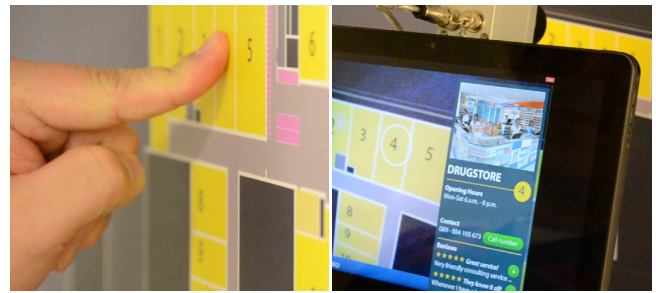


Figure 9: Potential application of the proposed method: touching a room on a printed floor plan is being detected and subsequently provides the user with digital and up-to-date information on the room.

**Augmented Reality User Manuals** The functionality of certain parts of a product may be explained in an intuitive fashion by means of Augmented Reality user manuals. To this end, such manuals overlay spatially registered 3D information on top of a view of the real object. However, similarly as for classical printed manuals, the user needs to define which part of an object (i.e. product) he or she is interested in. This could be implemented by selecting a part from a list of parts, but a much more intuitive interface would allow the user to simply use their fingers to touch the part of the object they would like to learn about.

As is shown in figure 1 (a-c), we implemented a prototype based on a physical miniature model of a car. When the user for example touches one of the headlights, the Augmented Reality visualization will explain their function and what they look like when turned on. Similarly, touching the engine hood results in a visual explanation how it can be opened, e.g. to refill the brake fluid. Such kind of interfaces could be handy in the context of electronic devices, such as printers, or physical aids, such as stair lifts or walkers, where touching a button or a thumbscrew would start an Augmented Reality user manual explaining the function of the respective part.

In this use case, a tracking model (we use an edge model) of the real object is crucial because detected touches need to be mapped to a known object coordinate system related to the car. Furthermore the surface model is more complex than a simple plane in this application. Selectable parts could be highlighted on the car, but it is not mandatory to do so because the real object itself provides features for the user to identify. The reader is advised to consult the supplementary video which best explains the described application.

**Further Applications** There are more possibilities to take advantage of our proposed method that are not covered in the video. A printed map, as for example found frequently in train stations or bus stops, could serve as user interface for (pedestrian) navigation applications running on wearable computers. By simply touching the destination on the map with a finger, our method enables providing the corresponding absolute and global position to a routing software that would then determine the best route to this destination and provide navigation instructions on the way.

Augmented Reality has the power to change the way we play video games. If a game does not take place in a virtual reality anymore but in the environment around a user, e.g. a living room, appropriate ways to interact with the environment are needed. Tasks such as placing game characters in the environment or collecting virtual goods could be implemented in an intuitive fashion using our proposed method by simply touching the according surfaces.

We also think that particularly industrial applications could benefit from natural and tangible touch interaction, when for example a quality assurance engineer can mark the position of defects on a physical product simply by touching them. Maintenance staff could then review them in an AR view and fix the defects afterwards.

## 7 CONCLUSIONS AND FUTURE WORK

This paper presented an approach to turn the surfaces of real objects into true touch interfaces by detecting the radiation of the warm fingerprint a touch leaves on the surface using a single infrared thermal image. We showed that our approach works with objects from a variety of different materials and that our method is adaptive to the temperature of the object, which may move unconstrained. At the example of several potential applications and use cases, which were implemented as prototypes, we showed how our proposed method can provide very intuitive and useful user interfaces for mobile Augmented Reality applications. Particularly the upcoming pervasiveness of wearable computers and head-mounted displays requires novel means to interact with real environments and digital information related to it, without using a touch screen.

Our proposed method has limitations, particularly resulting from the fact that we detect the touched surface after it has been touched. Firstly, this approach inherently introduces a delay between a touch and the time it can be detected. In our experiments, we found the delay between the finger releasing the object and the detection to be 0.191 s on average. Our approach also requires the user to touch the surface for a longer period of time than the case for regular touch screens or approaches such as OmniTouch [2]. However, in our user tests, where the subjects did not receive any instructions how long to touch the surface, the vast majority of touches lasted long enough to cause a detectable residual heat. Furthermore our approach requires the touched surface to be visible (i.e. not occluded) for the thermal camera after the touch. This did not cause any problems in the tests, but it might become problematic when performing subsequent touches between which the user does not move the hand away so the touches gets detected. Our tests revealed that our current approach cannot handle touches by all users on all surfaces. Particularly users with cold fingers and surfaces with high thermal conductivity impose difficulties. When using our method over a longer period of time, the surface may also wick away heat from the finger, which may require a break before the user can continue.

However, there are clear advantages of our method over those described in previous work. Our approach allows for truly distinguishing touches from occlusions in a dynamic and mobile setup interacting with arbitrary three-dimensional objects. While our current implementation requires touched surface to be locally reasonably planar and parallel to the image plane to ensure circularity of the detected blob, surfaces that are not parallel to the image plane can be dealt with based on information from the object tracking. One could first detect blobs without any constraint on their circularity, then rectify the thermal image for all of them based on their average 3D position and 3D normal obtained from the registered surface model, and finally run a circular blob detector on the rectified images. Because our approach does not aim at detecting a hand, there are no constraints on the approach angle of fingers or if they are outstretched or not. In fact, the actual touch we detect afterwards may even take place occluded from the thermal camera or outside its frustum, which largely increases the interaction volume.

In future work we will look into approaches that also detect touches caused by users with cold fingertips. Another issue for further research is that residual heat remains detectable for a long time after the touch for certain materials. We will explore approaches to suppress recurring detections of such touches while at the same time enabling to correctly detect new touches at the same position. We will also investigate how the visible light camera in our setup, or potentially an additional depth-sensing camera, may further aid our thermography touch detection approach beyond what has been presented in [12] and [6].

Generalizing our method will support dealing with more than one touch at a time, where multiple touches may be caused by the same hand, or different hands. As opposed to classical touch screens, imaging the hands enables assigning touches to the corre-

sponding hand, enabling advanced interactions. The position of a touch projected into the visible light camera image may further add degrees of freedom to the 3D position of a touch, e.g. by handling touches in the left side of the image as left mouse button clicks and those in the right side as right mouse button clicks. There are many more ways to combine our proposed method for natural touch interfaces with more modalities, e.g. speech input, in the future.

## ACKNOWLEDGEMENTS

This work was supported in part by the project “PASSAge” by the German Federal Ministry of Education and Research (BMBF), reference number 16SV5745. This work was also partially supported by the ENIAC Joint Undertaking “MIRTIC”, reference number NA 304653 and the Bayerisches Staatsministerium für Wirtschaft, Infrastruktur, Verkehr und Technologie under reference number IUK401/001. We further wish to thank Darko Stanimirovic for his help as well as all subjects who contributed to the test dataset.

## REFERENCES

- [1] A. Erol, G. Bebis, M. Nicolescu, R. D. Boyle, and X. Twombly. Vision-based hand pose estimation: A review. *Computer Vision and Image Understanding*, 108(12):52 – 73, 2007.
- [2] C. Harrison, H. Benko, and A. D. Wilson. Omnitouch: Wearable multitouch interaction everywhere. In *Proc. UIST*, 2011.
- [3] S. J. Henderson and S. Feiner. Opportunistic controls: Leveraging natural affordances as tangible user interfaces for augmented reality. In *Proc. VRST*. ACM, 2008.
- [4] Itseez. OpenCV (Open Source Computer Vision), March 2014.
- [5] D. Iwai and K. Sato. Heat sensation in image creation with thermal vision. In *Proc. ACM SIGCHI Int. Conf. on Advances in computer entertainment technology*, 2005.
- [6] D. Iwai and K. Sato. Document search support by making physical documents transparent in projection-based mixed reality. *Virtual Reality*, 15(2-3):147–160, June 2011.
- [7] D. Kurz, F. Häntsch, M. Große, A. Schiewe, and O. Bimber. Laser pointer tracking in projector-augmented architectural environments. In *Proc. ISMAR*, 2007.
- [8] E. Larson, G. Cohn, S. Gupta, X. Ren, B. Harrison, D. Fox, and S. Patel. Heatwave: Thermal imaging for surface user interaction. In *Proc. SIGCHI Conf. on Human Factors in Computing Systems*, 2011.
- [9] G. A. Lee, M. Billingham, and G. J. Kim. Occlusion Based Interaction Methods for Tangible Augmented Reality Environments. In *Proc. VRCAI*, 2004.
- [10] S. A. Mascaró. The common patterns of blood perfusion in the finger-nail bed subject to fingertip touch force and finger posture. *Haptics-e*, 4:1–6, 2006.
- [11] K. Oka, Y. Sato, and H. Koike. Real-time tracking of multiple fingertips and gesture recognition for augmented desk interface systems. In *Proc. Int. Conf. on Automatic Face and Gesture Recognition*, 2002.
- [12] E. Saba, E. Larson, and S. Patel. Dante vision: In-air and touch gesture sensing for natural surface interaction with combined depth and thermal cameras. In *Proc. Int. Conf. on Emerging Signal Processing Applications (ESPA)*, 2012.
- [13] A. Sahami, Y. Abdelrahman, N. Henze, S. Schneegeß, M. Khalilbeigi, and A. Schmidt. Exploiting thermal reflection for interactive systems. In *Proc. SIGCHI Conf. on Human Factors in Computing Systems*, 2014.
- [14] Y. Sato, Y. Kobayashi, and H. Koike. Fast tracking of hands and fingertips in infrared images for augmented desk interface. In *Proc. Int. Conf. on Automatic Face and Gesture Recognition*, 2000.
- [15] D. Sturman and D. Zeltzer. A survey of glove-based input. *Computer Graphics and Applications, IEEE*, 14(1):30–39, Jan 1994.
- [16] S. Vidas, P. Moghadam, and M. Bosse. 3D thermal mapping of building interiors using an RGB-D and thermal camera. In *Proc. ICRA*, 2013.
- [17] A. D. Wilson. Using a depth camera as a touch sensor. In *Proc. Int. Conf. on Interactive Tabletops and Surfaces*, 2010.
- [18] Z. Zhang. A flexible new technique for camera calibration. *Trans. IEEE PAMI*, 22:1330–1334, 2000.