

Hepburn


View Quest



Download the View Quest Android or iOS Remote Control App



Operation Guide

Operation Guide
Guida Operativa

Guide d'utilisation
Betriebsanleitung

Guía de funcionamiento
Guia de Operação

**Contents**

Introducing your Hepburn Bluetooth Speaker, DAB/DAB+ and FM Radio	3
Welcome from the Hepburn Design Team	3
Hepburn: compatible, stylish, hassle-free	3
What can my Hepburn do apart from look fab?	4
Talk to us	5
Important Safety Information – please read	6-7
Finding your way around your Hepburn – knobs, buttons, connectors and batteries.....	8
Top View	8
Back View	9
Battery Fitting – Bottom View	10
Getting Started	11
Positioning your Hepburn	11
Adjusting the Aerial	11
Turning the Unit On and Off	11
Volume Control	11
Using DAB Mode	11-12
Selecting another DAB/DAB+ Station	12
Updating the Stations List	12
Displaying Signal Strength	12
Manual Tuning	12-13
Setting Dynamic Range Control (DRC)	13
Changing Station Display Order	13
Pruning Your Station List	13
Viewing Station Information	13
Using FM Mode	14
Selecting FM Mode	14
Scanning for FM Stations	14
Setting Scan Preferences	14
Forcing mono for weak stations	14
Viewing Station Information	15



Setting Station Presets for DAB and FM	15
Storing Preset Stations	15
Recalling a Preset Station	15
Using Smart Device Mode with Bluetooth Devices	16
Pairing your Hepburn with a Bluetooth device	16
Connecting to an already paired Bluetooth device	16
Controlling your Bluetooth device with your Hepburn	16
Using Auxiliary Input Mode	17
Remotely Controlling your Hepburn with an Android or iOS device	17
What you can do with the View Quest App	17
What tablet or smartphone do you need for a remote?	17
Installing the View Quest App	18
Setting up the connection with your Hepburn	18
[Optional] Quickly setting up the app display for your remote	18
Controlling your Hepburn with your phone or tablet remote	18-20
Enjoying DAB/DAB+ with the View Quest App	20-21
Enjoying FM radio with the View Quest App	21-23
Enjoying your Bluetooth device with the View Quest App	23-24
Enjoying an auxiliary device with the View Quest App	24
General Settings	25
Equaliser	25
Count Down Timer (Cooking Timer)	25
Time and Date	25-26
Alarms	26-27
Backlight Level	27
Language	27
Factory Reset	27
Software Version	27
Specification	28



Introducing your Hepburn Bluetooth Speaker, DAB/DAB+ and FM Radio

Welcome from the Hepburn Design Team

Hello and welcome to your Hepburn. We are View Quest – an award-winning British company determined to excel in technical and aesthetic design. With your Hepburn we've combined the latest technologies like Bluetooth, DAB/DAB+ and mobile apps to create a truly stylish way for you to enjoy your favourite sounds – wherever they come from.

Taking inspiration from the latest trends in fashion and interior design, our goal for Hepburn is to create a feature rich product that not only sounds exceptional but looks fantastic too.

Hepburn: compatible, stylish, hassle-free

We've designed your Hepburn to make compatibility problems a thing of the past.

Compatible with your devices – old and new. Hepburn's Bluetooth lets you wirelessly connect the latest smart phones, tablets, MP3 players and other Bluetooth-enabled devices. Other audio devices without Bluetooth like turntables, computers or older phones can plug in to the 3.5mm jack.

Compatible with radio stations all over the world. Enjoy the ever increasing selection of digital broadcasts with Hepburn's DAB/DAB+ receiver as well as your old favourites with the FM tuner. Never lose track of any of your favourite stations with 30 station presets. For useful information about DAB in the UK, websites such as www.ukdigitalradio.com feature handy postcode finders that will tell you which DAB channels are available in your area.

Compatible with your Android or iPhone. The View Quest app lets you to sit back, relax and take control of the music with your smartphone or tablet, whichever Hepburn function you're using.

Ready to deliver your ideal sound. As well as providing eight preset equaliser profiles, Hepburn lets you design one of your own to exactly match your current desires.

Right for you. Exciting colours and design complement your personal taste and style.



What can my Hepburn do apart from look fab?

Here's a brief run-down of your Hepburn's capabilities. Everything is explained fully later in this guide.

Bluetooth speaker

Lets you play audio from a Bluetooth source like a phone or mp3 player, and lets you control the playback from your Hepburn. The tracks on your phone will never have sounded so good.

DAB/DAB+ receiver

Digital Audio Broadcasting (DAB) is the next big thing in radio. Clarity, station choice and ease of tuning are often cited as benefits. There are two versions, DAB and DAB+. Your Hepburn works with either.

FM Radio

DAB isn't everywhere, so there's an FM radio in your Hepburn so that you can still listen to radio wherever DAB is not available.

Auxiliary connection

Lets you plug in and listen to an external audio source that doesn't do Bluetooth, so your older devices aren't left out.

Control from your smartphone or tablet

No more missing remote controls! The View Quest App, available free for Android and iPhone devices, lets you sit back, relax and control every aspect of your Hepburn.

Phone Charger

When plugged in to the mains your Hepburn can charge a suitable phone or music player using its built-in USB connector. Convenient, and saves a power socket.

Dual Alarms

Wake up to your favourite radio station – or the buzzer.

Countdown Timer

A cooking timer with a range of up to 99 minutes makes your Hepburn even more useful in the kitchen.

**Talk to us**

We would really value your feedback – how well have we succeeded in our mission to create a stylish, compatible sound experience? If you'd like to share anything about your Hepburn – things you love, things you'd like, or things that could be better, we'd love to hear from you. Email us at info@viewquest.co.uk.

And of course, we're here to help you sort things out if you have any problems; email our support team at support@viewquest.co.uk for expert help on any aspect of your Hepburn. Please call or write – we have friendly people ready to help, and we really want your Hepburn experience to be first class.

Thank you and enjoy your Hepburn.

The team at View Quest



Important Safety Information – please read

Please read this guide before using your unit – it contains guidance and recommendations that can help ensure long-lasting, trouble-free, safe operation. Please keep this guide for future reference.

Be careful. Avoid:

- **Liquids:** don't expose your unit to drips or splashes, and don't put liquid containers like vases on it or near it.
- **Humidity or moisture:** humid or moist places like bathrooms and steam rooms need specially-designed equipment.
- **Heat:** don't expose your unit to direct sunlight or heat from radiators or other heat sources. Audio/video devices can generate a lot of heat; don't put your unit on top of such devices. Don't use naked flames anywhere near your unit either.
- **Dust and restricted airflow:** make sure your unit is in free-flowing air to avoid overheating.
- **Vibration:** constant vibration can cause damage.
- **Extreme climates:** this unit is designed for operation in moderate climates.

IMPORTANT:

- **DO NOT listen at high volume:** High volumes can permanently damage hearing.
- **DO NOT use equipment, especially headphones, when it could distract you from the requirements of traffic or other safety.**
- **DO NOT Use equipment that is not working normally or you suspect may be faulty or damaged.**
- **DO NOT** leave equipment switched on when it is unattended unless it is specifically stated that it is designed for unattended operation. Switch off using the switch on the equipment and make sure that your family knows how to do this. Special arrangements may need to be made for infirm or handicapped people.

Always:

- Operate all controls as instructed in the manual.
- Ensure that all electrical connections (including the mains plug, extension leads and inter-connections between the pieces of equipment) are properly made and in accordance with the manufacturer's instructions. Switch off and withdraw the mains plug before making or changing connections.



CAUTION: TO REDUCE THE RISK OF ELECTRIC SHOCK DO NOT REMOVE COVER (OR BACK), NO USER SERVICEABLE PARTS INSIDE, REFER SERVICING TO QUALIFIED SERVICE PERSONNEL.



DANGEROUS VOLTAGE

Dangerous Voltages, that may be of sufficient magnitude to constitute a risk of electric shock to persons is present within this product's enclosure.



ATTENTION

The owner's manual contains important operating and maintenance instructions, for your safety, it is necessary to refer to the manual.

WARNING: TO PREVENT FIRE OR SHOCK HAZARD, DO NOT EXPOSE THIS APPLIANCE TO DRIPPING OR SPLASHING.

Note: This unit will become warm when used for a long period of time. This is normal and does not indicate a problem with the unit.

Battery safety guidelines

Be sure to insert batteries of the correct type and ensure correct polarity (+/-).

To insert batteries, remove the battery compartment cover and insert batteries observing polarity.

Ensure the cover is secure and remove batteries in a safe manner without the use of metallic or other conductive objects

Batteries should not be replaced by children

Never dispose of batteries in fire as they may explode

Batteries should not be exposed to excessive heat such as sunshine, fire or naked flame.

Only use batteries of the same type

Do not mix old and new batteries and do not mix alkaline and rechargeable batteries

Do not attempt to charge non-rechargeable batteries

If the radio is not going to be used for a long period of time, remove the batteries from the battery compartment

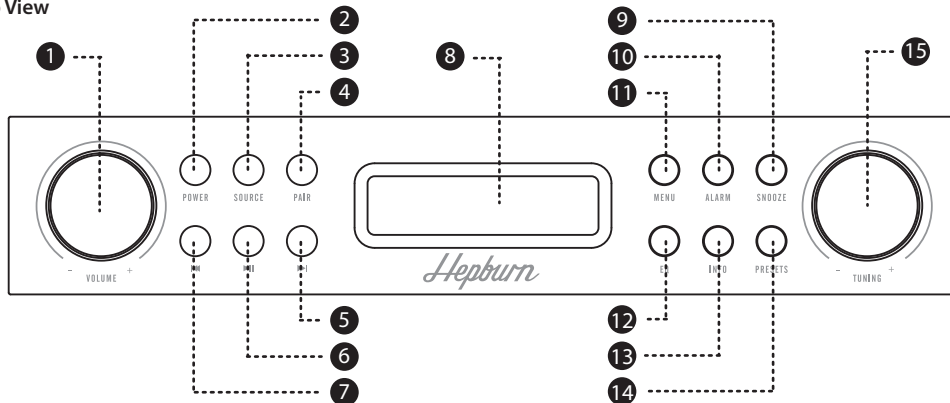
Always remove spent batteries from the battery compartment and dispose of them responsibly to protect the environment

Note: For battery operation, please switch off the mains adaptor and remove the mains power plug from the back of the radio.



Finding your way around your Hepburn

Top View



1. - VOLUME + knob

Turn to adjust volume level.

2. POWER button

Press to switch between standby and active modes.

3. SOURCE button

Press to switch between DAB, FM, Smart Device and Auxiliary Input modes.

4. PAIR button

Press to select Bluetooth device for pairing in Smart Device mode.

5. SKIP button

Press to skip to next track in Smart Device mode.

Press and hold to fast forwards current track in Smart Device mode. Continues through next tracks if held.

6. PLAY/PAUSE button

Press to switch between pause/play of current track in Smart Device mode.

7. BACKWARD button

In Smart Device mode, press to return to start of current track if more than 2.5 seconds in, otherwise skip to previous track.

Press and hold to rewind current track in Smart Device mode. Continues through previous tracks if held.

8. LCD display

9. SNOOZE button

Press to change the backlight level.

When alarm is sounding, press to activate Snooze feature.

10. ALARM button

Press to turn Alarms on or off.

11. MENU button

Press to display menu options relevant to current mode.

12. EQ button

Press to select or design Equaliser.

13. INFO button

Press to view station information.

14. PRESETS button

Press and hold to save preset stations;

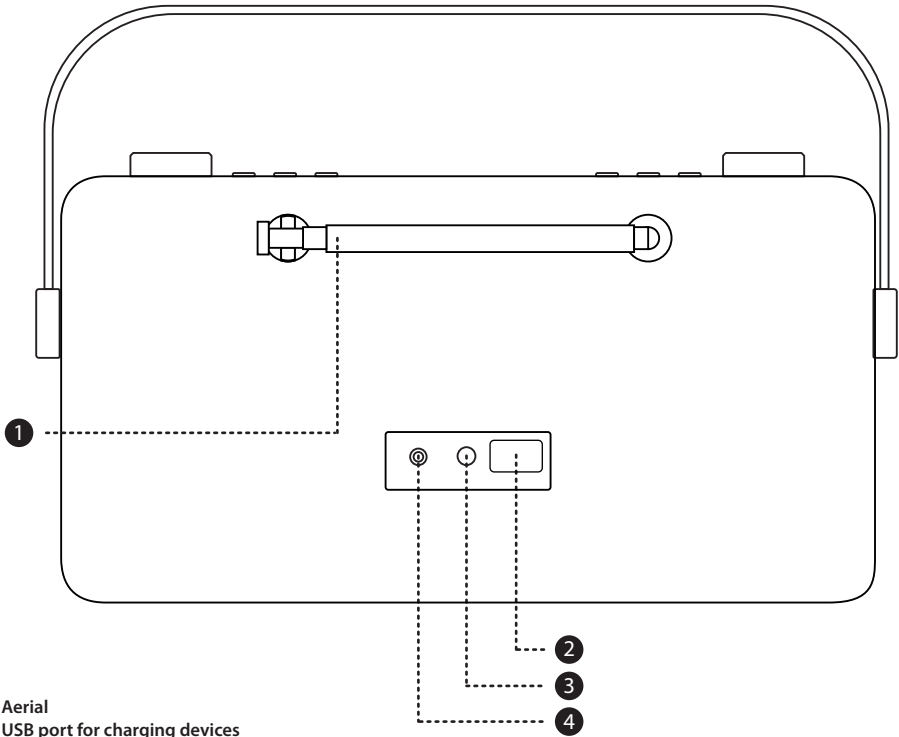
Press to recall a saved preset station.

15. - TUNING + knob

Turn to tune and press to confirm.



Back View



- 1. Aerial
- 2. USB port for charging devices
Outputs 5V volts for charging personal devices such as your phone or MP3 player.
- 3. AUX-IN for other devices
- 4. DC-IN power cable input

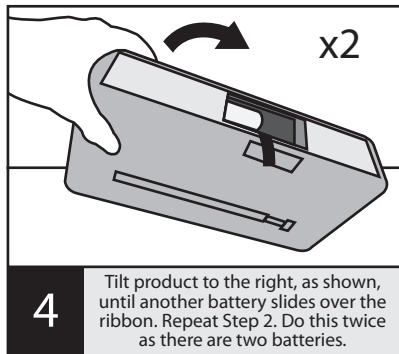
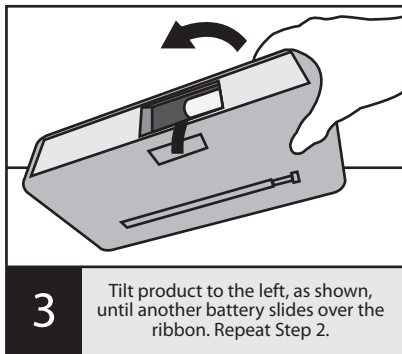
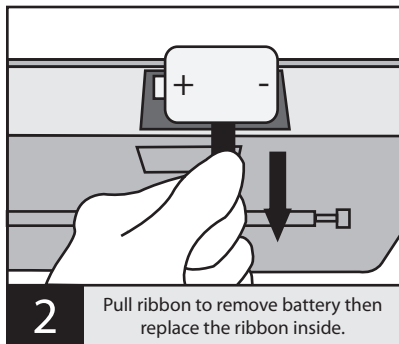
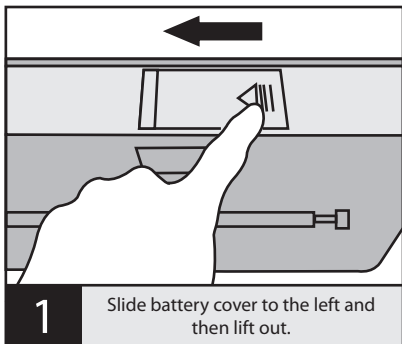


Battery Use

Your Hepburn can be powered by 4 x Type 'D' batteries.

Be sure to insert batteries of the correct type and ensure correct polarity (+/-).

Battery Removal





Getting Started

Carefully remove your Hepburn from its box. You may wish to store the packaging for future use. Inside the box you will find:

- Your Hepburn
- Power Adapter with plugs for UK and mainland Europe
- User Manual

Positioning your Hepburn

Place your Hepburn on a flat / stable surface, with reference to the safety information section in this manual.

Adjusting the Aerial

The aerial should be extended to ensure you receive the best signal possible in both DAB and FM radio modes. Later on it may be necessary to alter the position of your Hepburn and its aerial to achieve the best reception.

Turning the Unit On and Off

1. Connect the plug at the end of power adapter cable to the DC in jack on the back of your Hepburn. Insert the power adapter into the mains socket.
2. Turn the mains power on and then press the **POWER** button to turn on the unit.

Pressing the **POWER** button again switches your Hepburn to standby mode. To switch the unit off completely, unplug the power adapter from the mains socket.

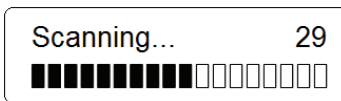
Volume Control

Adjust the radio volume by turning the – **VOLUME** + knob.

Using DAB Mode

Note: When you turn on the radio it will automatically search and store all the available stations. You should conduct an additional Full Scan to ensure all stations are picked up and stored. It is also recommended every few months to run a new scan to pick up any new DAB/DAB+ stations that may have begun broadcasting after purchasing your Hepburn.

1. Repeatedly press the **SOURCE** button until DAB is shown on the display. For the first time your Hepburn will carry out a full scan and store a list of stations in memory.



2. Once the scanning is complete the DAB/DAB+ stations will be displayed in alphanumeric order. The first station in the list will be selected.

Note: if no DAB/DAB+ signal is found in your area, it may be necessary to relocate your radio to a stronger signal area. Websites such as www.ukdigitalradio.com in the UK feature handy postcode finders that will tell you what DAB channels you can expect to receive.

Selecting another DAB/DAB+ Station

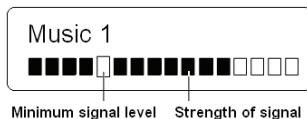
While a program is playing, turn the **-TUNING +** knob to cycle through available stations, and then press the **-TUNING +** knob to confirm the station you want to play.

Updating the Stations List

Press the **MENU** button, turn the **-TUNING+** knob to select **Full scan**, and then press the **-TUNING +** knob to confirm. Scan will commence.

Displaying Signal Strength

While playing a DAB/DAB+ program, repeatedly press the **INFO** button until the display shows a signal bar indicating the strength of the current station.



The indicator on the signal bar shows the minimum acceptable signal level.

Note: Stations with signal strength below the minimum signal level may not provide steady audio.

Manual Tuning

1. Press the **MENU** button, turn the **-TUNING +** knob to select **Manual tune**, and then press the **-TUNING +** knob to confirm. The display will show the channel number and frequency.
2. Turn the **-TUNING +** knob to step through the channels and then press the **-TUNING +** knob to select the current channel.

Note: If there is a multiplex corresponding to this channel and frequency, then after a few seconds the display will show a tuning meter with the signal strength and the multiplex.



3. To exit manual tune, press the **- TUNING +** knob again.

Setting Dynamic Range Control (DRC)

You can set the compression level of stations to eliminate the differences in dynamic range or sound level between radio stations. If loud stations are too loud while quiet stations are too quiet, DRC may help.

Note: DRC off indicates no compression

DRC low indicates little compression

DRC high indicates maximum compression

1. Press the **MENU** button, turn the **- TUNING +** knob to select **DRC**, and press the **- TUNING +** knob to confirm.
2. Turn the **-TUNING+** knob to select '**DRC high**', '**DRC low**' or '**DRC off**', and then press the **- TUNING +** knob to confirm your setting.

Changing Station Display Order

You may want to display your stations in a different order. Your options are:

Alphanumeric:	<i>Display all stations in alphanumeric order.</i>
Ensemble:	<i>List currently broadcasting active stations before inactive ones.</i>
Valid:	<i>Remove inactive stations from the station list.</i>

1. Press the **MENU** button, turn the **- TUNING +** knob to select **Station order**, and then press the **- TUNING +** knob to confirm.
2. Turn the **- TUNING +** knob to select '**Alphanumeric**', '**Ensemble**' or '**Valid**', and then press the **- TUNING +** knob to confirm your selection.

Pruning Your Station List

This feature enables your radio to remove inactive stations from the station list.

1. Press the **MENU** button, turn the **- TUNING +** knob to select **Prune**, and then press the **- TUNING +** knob to confirm.
2. Turn the **- TUNING +** knob to '**Yes**', and then press the **- TUNING +** knob to confirm.

Viewing Station Information

To view currently playing station information, press the **INFO** button repeatedly to cycle through **DLS** (Dynamic Label Segment), **Signal Strength**, **Program Type**, **Ensemble**, **Program Frequency**, **Signal Quality**, **Bitrate**, **Codec** and **Time and Date**.



Using FM Mode

Selecting FM Mode

1. Press the **SOURCE** button repeatedly until **FM** is displayed.
2. On first use the display will show **87.50MHz**, the start of the FM frequency range. Otherwise, the last listened-to FM station will be selected.

87.50MHz
[No RadioText]

Scanning for FM Stations

1. To manually scan FM stations, while frequency is displayed, turn the - **TUNING** + knob clockwise/anticlockwise to increase/decrease frequency by **0.05MHz per step**.
2. To automatically scan, turn the - **TUNING** + knob clockwise or anticlockwise and then press the - **TUNING** + knob. Your Hepburn will scan forwards or backwards until it reaches the next available station. To scan forwards, turn the - **TUNING** + knob clockwise before pressing it. To scan backwards turn the - **TUNING** + knob anticlockwise before pressing it.

Setting Scan Preferences

By default, FM scans stop at any available station. This may result in tuning to a weak station, resulting in poor sound quality. Your Hepburn helps you avoid weak stations.

1. To change the scan settings to stop only at stations with good signal strength, press the **MENU** button, turn the - **TUNING** + knob to select **Scan Setting**, and then press the - **TUNING** + knob to confirm.
2. Turn the - **TUNING** + knob to select '**Strong stations only**', and press the - **TUNING** + knob to confirm your selection.

Forcing mono for weak stations

By default, all stereo stations are reproduced in stereo. For weak stations, this may result in poor sound quality. Your Hepburn can offset this effect by playing weak stations in mono.

1. To play weak stations in mono, press the **MENU** button, turn the - **TUNING** + knob to select **Audio setting**, and then press the - **TUNING** + knob to confirm.
2. Turn the - **TUNING** + knob to select '**Forced mono**' and press the - **TUNING** + knob to confirm.



Viewing Station Information

A variety of station information is transmitted by broadcasters, and your Hepburn offers a convenient way for you to view it.

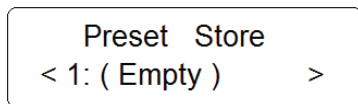
To view currently playing station information, press the **INFO** button repeatedly to cycle through **Radio Text**, **Program type**, **PS**, **Audio info** and **Time and Date**.

Setting Station Presets for DAB and FM

Storing Preset Stations

You can store up to both **30 DAB and FM stations** as preset stations. This lets you to access your favourite stations quickly and easily.

1. While your favourite station is playing, press and hold the **PRESETS** button until the display shows:

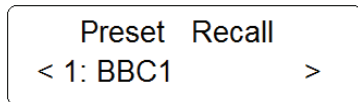


If you have stored presets, their details will be displayed instead of 'Empty.'

2. Turn the **- TUNING +** knob to cycle through preset numbers 1-30. Find an empty preset, or one you wish to replace.
3. Press the **- TUNING +** knob and your station will be stored as that preset number.

Recalling a Preset Station

1. Press the **SOURCE** button to select the mode you wish to play: **FM or DAB**.
2. Press the **PRESETS** button to show the saved preset stations.



3. Turn the **- TUNING +** knob to find the preset station you want to play, then press the **- TUNING +** knob to confirm.

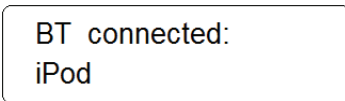


Using Smart Device Mode with Bluetooth Devices

Your Hepburn lets you play and control Bluetooth devices. To let this happen the devices have to be paired.

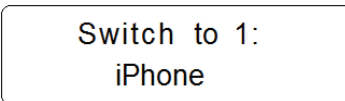
Pairing your Hepburn with a Bluetooth device

1. Press the **SOURCE** button repeatedly to select **Smart Device** mode.
2. After two seconds the display will show "**Waiting BT Connection**".
3. Activate your Bluetooth device and select the **search** mode.
4. "**Hepburn**" will appear on your Bluetooth device.
5. Select "**Hepburn**" and enter "**0000**" for the password if necessary.
6. "**BT Connected**" and your device name will show on the display when connection is successful.



Connecting to an already paired Bluetooth device

1. Press the **PAIR** button. If there are any devices paired with your Hepburn, the first one will show on the display.



2. Turn the **- TUNING +** knob to cycle through the list of paired devices, then press the **- TUNING +** knob to select the displayed device.
3. The display will show "**Waiting BT Connection**". Select "**Hepburn**" on your Bluetooth device.
4. "**BT Connected**" and the device name will show on the display when connection is successful.

Controlling your Bluetooth device with your Hepburn

Skip back, **Play/Pause** and **Skip forward** buttons can control a Bluetooth device connected to your Hepburn.



Using Auxiliary Input Mode

Auxiliary Input allows for a quick and easy connection to an MP3 player or other external audio source. You need an audio cable with a 3.5mm jack (not supplied) to connect to your Hepburn.

1. Before connecting to the mains socket, connect your external audio device to the **AUX IN** socket on the rear of your Hepburn.
2. Connect the power adapter to the mains socket, press the **POWER** button to switch your Hepburn on.
3. Press the **SOURCE** button repeatedly until **Auxiliary Input** appears on the display.

Auxiliary Input

In this mode, you control your audio device through its own controls. Volume levels on both the audio device and your Hepburn may need to be adjusted for optimal volume and clarity.

Remotely Controlling your Hepburn with an Android or iOS device

You can turn your smartphone or tablet into a remote control for your Hepburn with the **free View Quest App**.

What you can do with the View Quest App

- **Sources:** switch between Bluetooth, Dab/DAB+, FM and Auxiliary
- **DAB/DAB+, FM:** adjust volume, channels and presets, display RadioVIS information
- **Bluetooth:** change tracks and adjust volume
- **AUX-IN:** adjust the volume


You can also **manage equaliser presets** and tell your Hepburn to **standby** or **wake up**, and all of this without leaving your chair.

What tablet or smartphone do you need for a remote?


For **Apple devices**, the App is compatible with all iPhones, iPads and iPod Touch devices running iOS 3.1.3 or later (also iPad and iPad 2 devices in iPhone compatibility mode). For **Android devices**, Android 2.2 or later is supported. Your device needs **Bluetooth** and you need to be able to install apps from the appropriate app store.

[note] We'll refer to your Apple or Android device as your "Remote" from now on.

Installing the View Quest App



1. Go to the appropriate store for your device; **App Store** for Apple, **Play Store** for Android. The simplest way to find the View Quest App is to use the search bar at the top of the screen to find "**viewquest**" (with no quote marks). The App is called "**View Quest**", it's free to install and use and its icon looks like this: 
2. Install the App by pressing the **INSTALL** button.


Setting up the connection with your Hepburn

1. After you have installed the View Quest App, the next step is to establish a Bluetooth connection between your remote and your Hepburn. Please follow the section "*Pairing your Hepburn with a Bluetooth device*" on page 16.
2. Having paired successfully, Tap the icon  on your remote to start the app.
3. The App splash screen will display briefly, then the **Radio List** screen, which will display your Hepburn as an Unknown Bluetooth device. Click on the Hepburn entry, and the app will connect with your Hepburn.

You are now in control of your Hepburn.

[Optional] Quickly setting up the app display for your remote

The View Quest App automatically optimises its display for the type of device it is running on; it uses a different layout on a phone (portrait)  to a tablet (landscape) . So if you are, for example, using a tablet in portrait mode, your display may not be optimal. To change this:

1. Tap your device's menu key (see your device user manual for assistance finding this).
2. Tap the **Settings** button  for settings.
3. Tap the button next to **UI type** and select **Smartphone** or **Tablet**.
4. The display will adapt to the new setting.

[Note] The View Quest App does not rotate in normal use.

[Note] Selecting Tablet UI type on a small device may truncate some information.



Controlling your Hepburn with your phone or tablet remote

Finding your way around the View Quest App

Main Panels

Your View Quest App has 4 major information panels. They are:

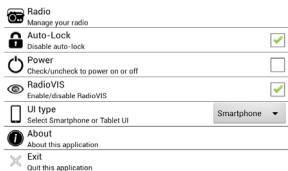
- Browse
- Mode
- Preset
- Now Playing



In smartphone  mode these panels are accessed one at a time using control buttons at the bottom of the display. In tablet  mode they appear onscreen at the same time in separate windows. This makes the best of available space, whatever the size of your device.









The roles of these panels when listening to different sources will be explained in 'Getting Started'.

Menu Items



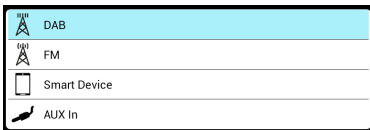
In both  and  mode tapping your device menu while the View Quest App is running reveals icons for common functions. They are:

-  **EQ Settings** – lets you select pre-defined equalisation settings or configure one of your own.
-  **Settings** – opens a panel where you can change common settings:
 - Radio** – Scans for and lists available radios. Choose your Hepburn from this list.
 - Auto-lock** – Disable or enable auto-lock of your phone or tablet.
 - Power** – Power off (standby) or power on your Hepburn.
 - RadioVIS** – Disable or enable the display of images and text messages sent by some radio stations to accompany their programmes. RadioVIS is transmitted over the internet, so requires a WiFi or 3g connection.
 - UI type** – selects smartphone  or tablet  user interface.
 - About** – displays App version information.
 - Exit** – quits the View Quest App.
-  **Standby** – puts your Hepburn in standby mode, and opens the Settings panel ready for you to enable power to your Hepburn again
-  **Exit** – quits the View Quest App



Getting Started – your Main Menu: Mode


In smartphone mode  : tapping **Mode**  brings up the **Mode List** fullscreen.


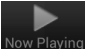
In tablet mode  : the **Mode List** is always visible in the **Mode** panel.




Enjoying DAB/DAB+ with the View Quest App

 mode: to select DAB/DAB+ tap **Mode**  then tap **DAB**.

 mode: to select DAB/DAB+ just tap **DAB** in the **Mode** Window.

In  mode the View Quest App will display the **Now Playing** panel. You can select it again by tapping the **Now Playing** button  at the bottom of the display.

In  mode all the panels are visible, the **Now Playing** panel is on the right.

The Now Playing panel in DAB/DAB+ mode

The **Now Playing** panel displays the last used radio station. If no station has ever been selected the DAB/DAB+ browse screen is shown.

[note] If RadioVIS is enabled and available for the current station, images available over the internet are presented, synchronised with the DAB broadcast.

Now Playing options for DAB:



Mute or unmute

Volume Slider


Set output volume



Jump to next or previous station in alphabetical order

The Browse panel in DAB/DAB+ mode

In  mode tap the **Browse** button  at the bottom of the display.


In  mode all the panels are visible, the **Browse** panel is at the bottom left.

The **Browse** panel displays the DAB broadcast radio stations discovered by your Hepburn. Scroll and tap on a station to select it. (For details of scanning for DAB radio stations, see “DAB Mode” on page 11 of this manual.)



[note] When browsing through stations, any station no longer detected is listed with a question mark in front of its name.

The Preset panel in DAB/DAB+ mode



In  mode tap the **Preset** button  at the bottom of the display.

In  mode all the panels are visible, the **Preset** panel is at the top middle.


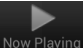
To select one of your preset stations, scroll the list if necessary and tap the station.


To add the currently playing station to your presets tap **Add Preset**  at the top left of the **Preset** panel. This will display a green **Select** button  next to every preset. Tap the green **Select** button next to the preset you wish to hold the current station.

Enjoying FM radio with the View Quest App

 mode: to select FM tap **Mode**  then tap **FM**.

 mode: to select FM just tap **FM** in the **Mode** panel.

In  mode the View Quest App will display the **Now Playing** panel. You can select it again by tapping the **Now Playing** button  at the bottom of the display.

In  mode all the panels are visible, the **Now Playing** panel is on the right.



The Now Playing panel in FM mode

The radio tunes to the last frequency selected and plays any audio present. If no frequency has previously been selected the lowest FM frequency is presented.

[note] If RadioVIS is enabled and available for the current station, images available over the internet are presented, synchronised with the FM broadcast.

Now Playing options for FM:



Mute or unmute

Volume Slider

Set output volume



Manually tune down/up in 0.05MHz intervals



Scan down/up to next station

The Browse panel in FM mode

In mode tap the **Browse** button  at the bottom of the display.

In mode all the panels are visible, the **Browse** panel is at the bottom left.



The **Browse** panel for FM displays an analogue tuning knob – rotate it with your finger to tune the FM radio.

The Preset panel in FM mode

In mode tap the **Preset** button  at the bottom of the display.

In mode all the panels are visible, the **Preset** panel is at the top middle.

To select one of your preset frequencies, scroll the list if necessary and tap the frequency you wish to tune to.

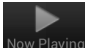
To add the currently playing station to your presets tap **Add Preset**  at the top left of the **Preset** panel. This will display a green **Select** button  next to every preset. Tap the green **Select** button next to the preset you wish to hold the current frequency.

Enjoying your Bluetooth device with the View Quest App

[note] The View Quest App in Smart Device mode works in conjunction with the audio player on the tablet or smartphone you are using as a remote. The App cannot control another Bluetooth device.

mode: to select Smart Device tap **Mode**  then tap **Smart Device**.

mode: to select Smart Device just tap **Smart Device** in the **Mode** panel.

In mode the ViewQuest App will display the **Now Playing** panel. You can select it again by tapping the **Now Playing** button  at the bottom of the display.

In mode all the panels are visible, the **Now Playing** panel is on the right.

The Now Playing panel in Smart Device mode

The **Now Playing** panel does not display any audio information in **Smart Device** mode. Use the audio player in your remote to select albums or playlists.

Now Playing options for Smart Device:



Mute or unmute

Volume Slider

Set output volume



Toggles between play and pause for the current track



Go to start of current – play previous/play next track






The Browse and Preset panels in Smart Device mode


The **Browse** and **Preset** panels have no function in **Smart Device Mode**; use the device's audio player to navigate albums and playlists instead.

Enjoying an auxiliary device with the View Quest App

 mode: to select AUX In tap **Mode**  then tap **AUX-In**.

 mode: to select AUX In just tap **AUX-In** in the **Mode** panel.

In  mode the View Quest App will display the **Now Playing** panel. You can select it again by tapping the **Now Playing** button  at the bottom of the display.

In  mode all the panels are visible, the **Now Playing** panel is on the right.

The Now Playing panel in AUX in mode

The **Now Playing** panel displays a Jack plug symbol and volume control.

Now Playing options for AUX in:



Mute or unmute

Volume Slider

Set output volume

[note] The volume control on the input device, if present, may need to be adjusted in conjunction with the app volume control for optimal volume and clarity. You control playback from the input device too.

Other Panels in AUX In mode

Apart from **Mode** to change source, no other panels have any function in AUX In mode.



General Settings

Equaliser

Your Hepburn has seven equalisation settings to suit different sound types, and you can also configure one of your own to exactly match your requirements. Each of the equalisation settings will change the tone of your Hepburn when selected. To choose an equalisation setting:

1. Press the **EQ** button to select '**Equaliser**'.
2. Turn the - **TUNING** + knob and then press it to select **Normal**, **Classic**, **Jazz**, **Pop**, **Rock**, **Speech**, **Bass** or **My EQ**.
3. To set up your own Equaliser profile, select '**My EQ**'; and then set the level of **Treble**, **Bass** and **Loudness** using the - **TUNING** + knob.

Count Down Timer (Cooking Timer)

The timer can be set at one minute intervals up to 99 minutes in the future.

1. Press the **MENU** button, and then turn the - **TUNING** + knob to select **System menu**. Press the - **TUNING** + knob to confirm.
2. Turn the - **TUNING** + knob to select **Count Down Timer** menu, and then press the - **TUNING** + knob to confirm.
3. Turn the - **TUNING** + knob until the desired time appears in the display, then press the - **TUNING** + knob to confirm.
4. To view the remaining time, follow steps 1-2 to select **Count Down Timer** menu again.
5. When the time is elapsed, the buzzer will sound, at an increasing volume. Any other sound playing on your Hepburn will be muted while the buzzer is sounding.
6. Press the - **TUNING** + knob to stop the buzzer. Otherwise the buzzer will turn off automatically after 30 minutes.
7. To cancel an already set Count Down timer, follow steps 1-3 to set the time to 00:00 minutes.

Time and Date

Your Hepburn can set its time and date from DAB, or you can set it manually. You can also select your date and time formats.

1. Press **MENU**, turn the - **TUNING** + knob to display **Time** then press the - **TUNING** + knob to select. Further turning of the - **TUNING** + knob will cycle through the options below:

Set Time/date:	<i>Manually set-up both Time and Date</i>
Auto update:	<i>'Update from DAB' or 'No update'</i>
Set 12/24 hour format:	<i>'Set 24 hour' or 'Set 12 hour'</i>
Set date format:	<i>'DD-MM-YYYY' or 'MM-DD-YYYY'</i>

2. Use the - **TUNING** + knob to find and select the options you prefer.



To set time manually:

1. Select "**Set Time/Date**"
2. Turn the - **TUNING** + knob to select correct hours, press the - **TUNING** + knob to confirm.**
3. Turn the - **TUNING** + knob to select correct minutes, press the - **TUNING** + knob to confirm.
4. Turn the - **TUNING** + knob to select correct day, press the - **TUNING** + knob to confirm.*
5. Turn the - **TUNING** + knob to select correct month, press the - **TUNING** + knob to confirm.*
6. Turn the - **TUNING** + knob to select correct year, press the - **TUNING** + knob to confirm.

***The value of this item is affected by your hour format setting*

**The order of these items are affected by your date format setting.*

Alarms

Your Hepburn provides highly flexible dual alarms. Before setting your alarms, please set the time and date as detailed in the previous section. Then:

1. Press the **ALARM** button repeatedly to select '**Alarm 1 Setup**' or '**Alarm 2 Setup**' and press the - **TUNING** + knob to confirm. This will start the **Alarm Wizard**.
2. The **Alarm Wizard** will step you through the alarm options. Turn the - **TUNING** + knob to select options, and then press the - **TUNING** + knob to confirm the settings and move to the next option.
(To cancel alarm setup, press **ALARM** button again.)

Options are as follows:

Alarm states: *On or Off*

Alarm time: *00:00 (manually set up the time)*

Alarm duration time: *15/30/45/60/90 mins*

Alarm source: *DAB, FM or buzzer*
(If you select DAB or FM, you can choose your last listened to station, or Preset 1, if set)

Alarm active day: *Daily, Once, Weekends or Weekdays*

Alarm volume: *Turn the - **TUNING** + knob to adjust the alarm volume*

3. When the display shows '**Alarm Saved**', the alarm setting is set.
4. To temporarily switch off alarm, press the **SNOOZE** button when the alarm is sounding. Press the **SNOOZE** button repeatedly to set Snooze period time of 5, 10, 15 or 30 minutes in turn. The selected snooze time will show as "**Snooze mm : ss**" on the display.

Note: Different Snooze periods are available depending on alarm duration.



5. To turn off the Alarm, press the **POWER** or **ALARM** buttons when the alarm is sounding.
6. To cancel Alarm, refer to steps 1-3 to set Alarm states to 'Off'.

Backlight Level

To change the backlight level of standby mode and power on mode, press **SNOOZE** repeatedly while alarm is not sounding. Or using the menu:

1. Press the **MENU** button and then turn the - **TUNING** + knob to select **System** menu. Press the - **TUNING** + knob to confirm.
2. Turn the - **TUNING** + knob to select **Backlight** menu and press the - **TUNING** + knob to confirm.
3. Turn the - **TUNING** + knob to select backlight level, and press the - **TUNING** + knob to confirm the setting.

Power On -

High
Medium
Low

Standby -

High
Medium
Low

Language

1. Press the **MENU** button, and then turn the - **TUNING** + knob to select **System** menu. Press the - **TUNING** + knob to confirm.
2. Turn the - **TUNING** + knob to select **Language** menu and press the - **TUNING** + knob to confirm.
3. Turn the - **TUNING** + knob to select language and press the - **TUNING** + knob to confirm.

Factory Reset

Factory reset resets all user settings to default values, so time/date, alarm settings, presets and Bluetooth settings are lost.

1. Press the **MENU** button, turn the - **TUNING** + knob if necessary to select **System** menu and press the - **TUNING** + knob to confirm. Then turn the - **TUNING** + knob to select Factory Reset. Press the - **TUNING** + knob to confirm.
2. Turn the - **TUNING** + knob to 'Yes', and then press the - **TUNING** + knob to confirm. Display will show "Restarting" and your Hepburn will reset to Factory settings.

Software Version

Note: The helpdesk may ask you for the software version of your product.

1. Press the **MENU** button, and then turn the - **TUNING** + knob to select **SW Version**. Press the - **TUNING** + knob to confirm. Display will show "SW Version" and below it your Hepburn's software version, scrolling as necessary.



Specification

Description:	<i>Bluetooth Speaker with DAB/DAB+ and FM digital radio</i>
Frequency Ranges:	<i>FM: 87.5-108MHz DAB/DAB+: 174.928 – 239.200MHz</i>
Power Supply:	<i>AC Power Input: 100-240VAC, 50-60Hz</i>
Audio Output:	<i>80Hz- 20KHz frequency range</i>
Power Consumption:	<i>10W rms</i>
Dimensions:	<i>285mm x 75mm x 155mm</i>



This symbol on the product or in the instructions means that your electrical and electronic equipment should be disposed at the end of its life separately from your household waste. There are separate collection systems for recycling in the EU.

For more information, please contact the local authority or your retailer where you purchased the product.

View Quest hereby declares that the Hepburn radio is in compliance with the essential requirements and other relevant provisions of Directive 1999/5/EC.

For further details, please contact :

View Quest
9-10 Mill Lane
Alton
Hampshire
GU 34 2QG
support@viewquest.co.uk

