



user manual

Washing Machine

EWP 126100 W

Electrolux. Thinking of you.

Share more of our thinking at www.electrolux.com

CONTENTS

Safety information	2	First use	10
Frost precaution	4	Daily use	10
Environment concerns	4	Washing programmes	18
Product description	5	Consumption values	20
Technical data	6	Care and cleaning	21
Installation	6	What to do if...	24

Subject to change without notice



SAFETY INFORMATION

Important! Read carefully and keep for future reference.

- The safety of your appliance complies with the industry standards and with legal requirements on the safety of appliances. However, as manufacturers, we feel it is our duty to provide the following safety notes.
- It is most important that this instruction book should be retained with the appliance for future reference. Should the appliance be sold or transferred to another owner, or should you move house and leave the appliance, always ensure that the book is supplied with the appliance in order that the new owner can get to know the functioning of the appliance and the relevant warnings.
- You **MUST** read them carefully before installing or using the appliance.
- Before first starting up, check the appliance for any damage incurred during transport. Never connect up a damaged appliance. If parts are damaged, contact your supplier.
- If the appliance is delivered in the winter months when there are minus temperatures. Store it at room temperature for 24 hours before using for the first time.
- This appliance is made for use in a normal domestic situation. The manufacturer is not responsible for freezing damages. Read "Frost precaution".
- During high temperature wash programmes the door glass may get hot. Do not touch it!
- Make sure that small children and pets do not climb into the drum. To avoid this, please check inside the drum before using.
- Any objects such as coins, safety pins, nails, screws, stones or any other hard, sharp material can cause extensive damage and must not be placed into the appliance.
- Only use the advised quantities of fabric softener and detergent. Damage to the fabric can ensue if you over-fill. Refer to the manufacturer's recommendations of quantities.
- Wash small items such as socks, laces, washable belts etc in a washing bag or pillow case as it is possible for such items to slip down between the tub and the inner drum.
- Do not use your appliance to wash articles with whalebones, material without hems or torn material.
- Always unplug the appliance and turn off the water supply after use, cleaning and maintenance.
- Under no circumstances should you attempt to repair the appliance yourself. Repairs carried out by inexperienced people may cause injury or serious malfunctioning. Contact your local Service Centre. Always insist on genuine spare parts.

General safety

- It is dangerous to alter the specifications or attempt to modify this product in any way.

Installation

- This appliance is heavy. Care should be taken when moving it.

- All packing and transit bolts must be removed before use. Serious damage can occur to the product and to property if this is not adhered to. See relevant section in the user manual.
 - This appliance is free standing only. **DO NOT** build it in under a counter and **DO NOT** remove the worktop for any reason.
 - After having installed the appliance, check that it is not standing on the inlet and drain hose and the worktop is not pressing the electrical supply cable against the wall.
 - Install the appliance on a flat hard floor.
 - Never place cardboard, wood or similar materials under the appliance to compensate for any unevenness in the floor.
 - If the appliance is situated on a carpeted floor, please adjust the feet in order to allow air to circulate freely under the appliance.
 - Check that the appliance does not touch the wall or other kitchen units.
 - **This appliance must be connected to a cold water supply.**
 - Do not use the hose from your previous appliance to connect to water supply. Always use the hose supplied with the appliance.
 - The inlet hose must not be lengthened. If it is too short and you do not wish to move the tap, you will have to purchase a new, longer hose specially designed for this type of use.
 - Always be sure, that there is no water leakage from hoses and their connections after the installation.
 - If the appliance is installed in a location subject to frost, please read the "Frost precaution" chapter. Manufacturer decline any responsibility for freezing damages.
 - Any plumbing work required to install this appliance should be carried out by a qualified plumber or competent person.
 - Any electrical work required to install this appliance should be carried out by a qualified electrician or competent person.
- other than those for which it was designed.
- Only wash fabrics which are designed to be machine washed. Follow the instructions on each garment label.
 - Do not overload the appliance. See the "Washing Programme Chart".
 - Before washing, ensure that all pockets are empty and buttons and zips are fastened. Avoid washing frayed or torn articles and treat stains such as paint, ink, rust, and grass before washing. Underwired bras must NOT be machine washed.
 - The detergent dispenser drawer is provided with an insert for liquid detergent. Do not use the insert downwards for gelatinous detergents, with programmes including prewash, with the delay start option. In all these cases you can use metering balls or sachets provided with the detergent, Take out the metering aid at the end of the washing cycle.
 - Garments which have been in contact with volatile petroleum products should not be machine washed. If volatile cleaning fluids are used, care should be taken to ensure that the fluid is removed from the garment before placing in the appliance.
 - Never pull the power supply cable to remove the plug from the socket; always take hold of the plug itself.
 - Never use the appliance if the power supply cable, the control panel, the working surface or the base are damaged so that the inside of the appliance is accessible.

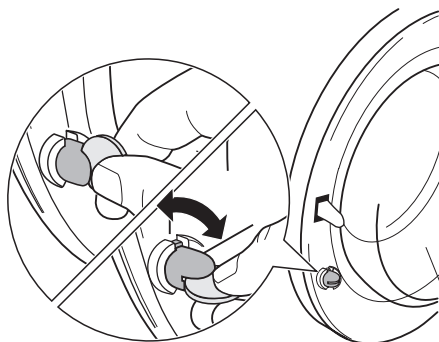
Child safety

- This appliance is not intended for use by persons (including children) with reduced physical sensory or mental capabilities or lack of experience and knowledge unless they have been given supervision or instruction concerning use of the appliance by a person responsible for their safety.
- Children should be supervised to ensure that they do not play with the appliance.
- The packaging components (e.g. plastic film, polystyrene) can be dangerous to children - danger of suffocation! Keep them out of children's reach.

Use

- This appliance is designed for domestic use. It must not be used for purposes

- Keep all detergents in a safe place out of children's reach.
- Make sure that children or pets do not climb inside the drum. To prevent children and pets becoming trapped inside the drum this appliance incorporates a special feature. To **activate** this device, rotate the button (without pressing it) inside the door clockwise until the groove is horizontal. If necessary use a coin.



To **disable** this device and restore the possibility of closing the door, rotate the button anti-clockwise until the groove is vertical.

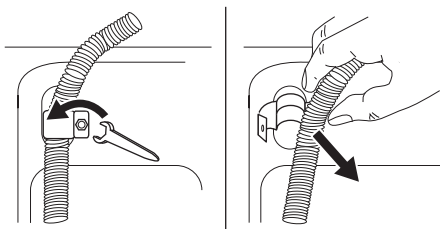
FROST PRECAUTION

If the appliance is installed in a place where the temperature could drop below 0°C, proceed as follows to remove any water remaining inside the appliance:


1. unplug the appliance;
2. turn off the water tap;
3. unscrew the water inlet hose from the tap;
4. unfasten the drain hose from the rear support and unhook it from sink or spigot;

5. place a bowl on the floor;
6. let the drain hose run along the floor, place the external extremities of the drain and inlet hoses in the bowl placed on the floor and let water drain out completely;
7. screw the water inlet hose back on and reposition drain hose again;

When you intend to start the appliance up again, make sure that the room temperature is above 0°C.




ENVIRONMENT CONCERNS

The symbol  on the product or on its packaging indicates that this product may not be treated as household waste. Instead

it should be taken to the appropriate collection point for the recycling of electrical and electronic equipment. By ensuring this

product is disposed of correctly, you will help prevent potential negative consequences for the environment and human health, which could otherwise be caused by inappropriate waste handling of this product. For more detailed information about recycling of this product, please contact your local council, your household waste disposal service or the shop where you purchased the product.

Packaging materials

The materials marked with the symbol  are recyclable.

>PE<=polyethylene

>PS<=polystyrene

>PP<=polypropylene

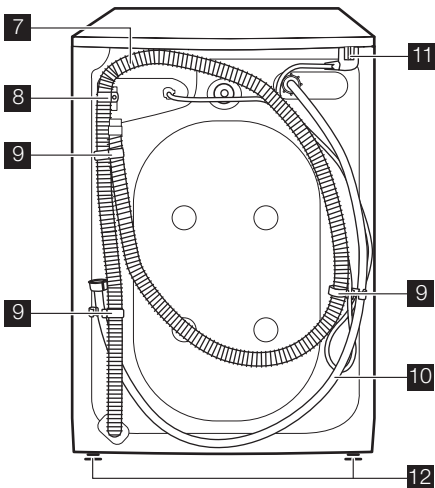
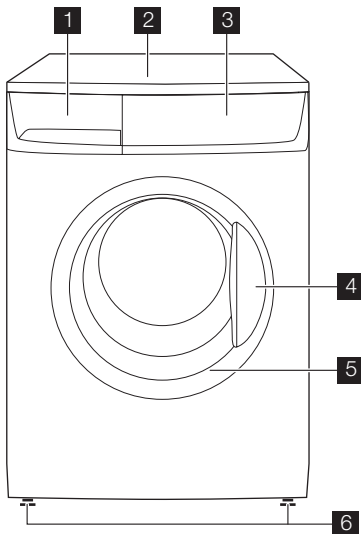
This means that they can be recycled by disposing of them properly in appropriate collection containers.

Ecological hints

To save water, energy and to help protect the environment, we recommend that you follow these tips:

- Normally soiled laundry may be washed without prewashing in order to save detergent, water and time (the environment is protected too!).
- The machine works more economically if it is fully loaded.
- With adequate pre-treatment, stains and limited soiling can be removed; the laundry can then be washed at a lower temperature.
- Measure out detergent according to the water hardness, the degree of soiling and the quantity of laundry being washed.

PRODUCT DESCRIPTION



- 1** Detergent dispenser drawer
- 2** Worktop
- 3** Control panel
- 4** Door opening handle
- 5** Rating plate (on the inner edge)
- 6** Front adjustable feet

- 7** Water drain hose
- 8** Drain hose support
- 9** Hose holders
- 10** Water inlet hose
- 11** Mains cable
- 12** Back feet

TECHNICAL DATA

Dimensions	Width Height Depth Depth (Overall dimensions)	60 cm 85 cm 50 cm 55 cm
Electrical connection Voltage - Overall power - Fuse	Information on the electrical connection is given on the rating plate, on the inner edge of the appliance door.	
Water supply pressure	Minimum Maximum	0,05 MPa 0,8 MPa
Maximum Load	Cotton	6 kg
Spin Speed	Maximum	1200 rpm

INSTALLATION

Unpacking

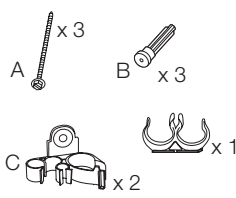


Warning!

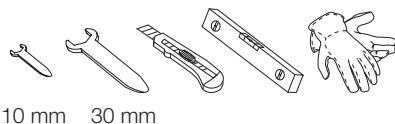
- Read carefully the "Safety information" chapter before installing the appliance.



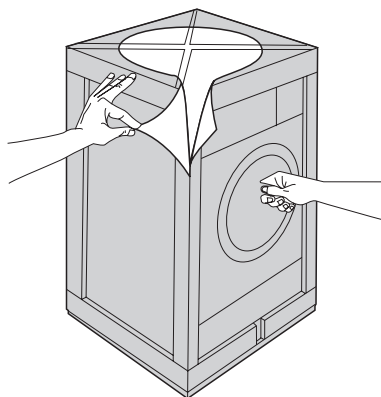
Warning! Remove and keep all transit devices so that they can be refitted if the appliance ever has to be transported again.



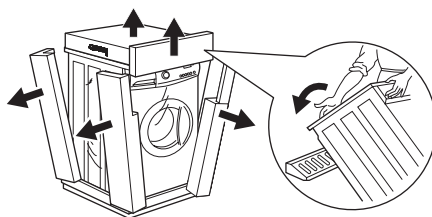
Necessary tools ¹⁾



- Remove the external film. Use a cutter, if necessary.

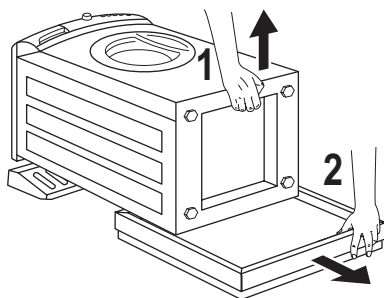


- Remove the cardboard top.
- Remove the polystyrene packaging materials.
- Spread the front piece on the floor behind the appliance and then lay the appliance carefully rear side down on it. Make sure that no hoses are crushed in the process.

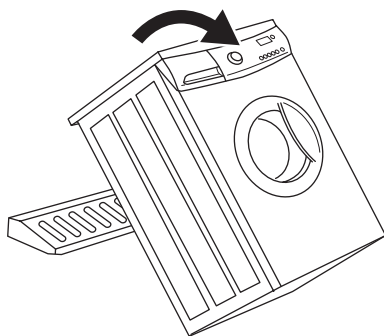


- Remove the polystyrene base from the bottom.

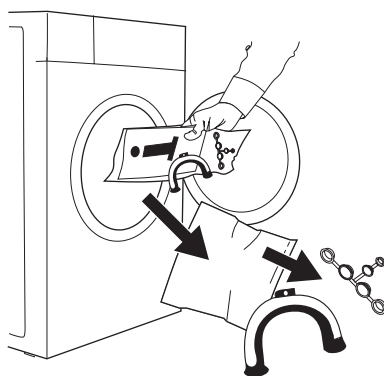
¹⁾ These tools are not provided with the appliance.



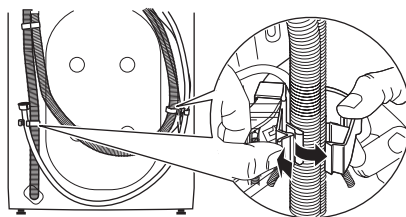
- Return appliance to the upright position.



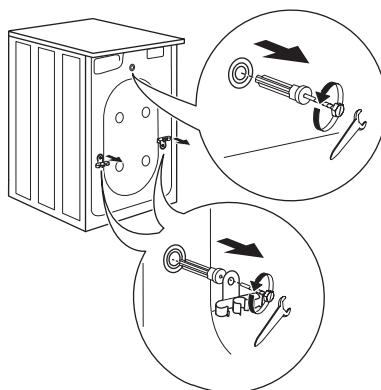
- Open the door and remove the plastic hose guide, the bag containing the instruction booklet and the plastic plug caps from the drum.



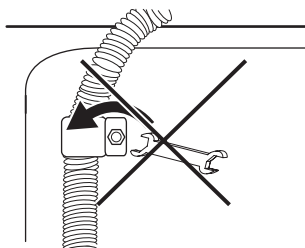
- Remove the power supply cable and the draining and inlet hose from the hose holders (C) on the rear of the appliance.



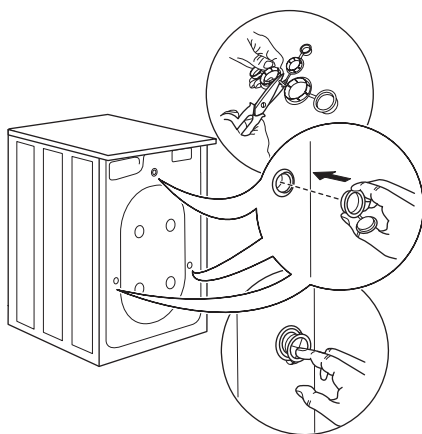
- Unscrew the three bolts (A) and remove the hose holders (C).
- Slide out the relevant plastic spacers (B).



Warning! Do not remove the drain hose from the rear support. Remove this hose only if it is necessary to drain the water. Refer to "Frost precaution" and "What to do if".



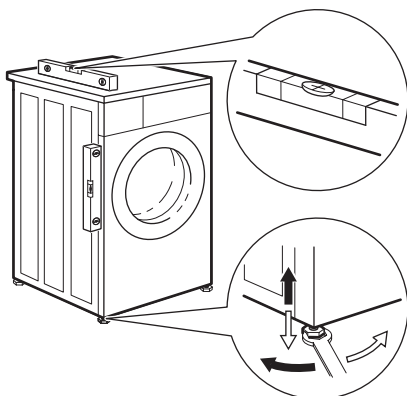
- Plug the smaller upper hole and the two large ones with the corresponding plastic plug caps.



Positioning and levelling

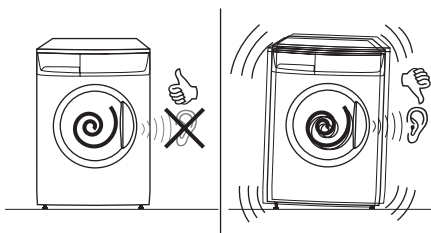
Level the appliance by raising or lowering the feet. Depending on the model, the appliance can have four adjustable feet, or two front-adjustable feet and two back fixed feet.

The appliance **MUST** be level and stable on a flat hard floor. If necessary, check the setting with a spirit level. Any necessary adjustment can be made with a spanner.



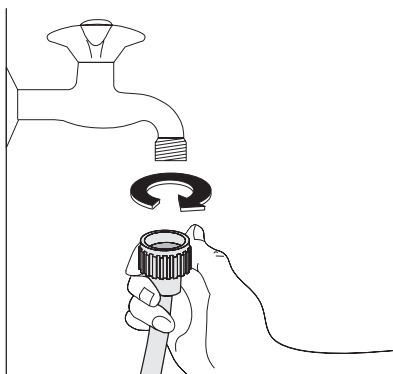
Accurate levelling prevents vibration, noise and displacement of the appliance during operation.

Repeat the levelling action, if the appliance is not level and stable.

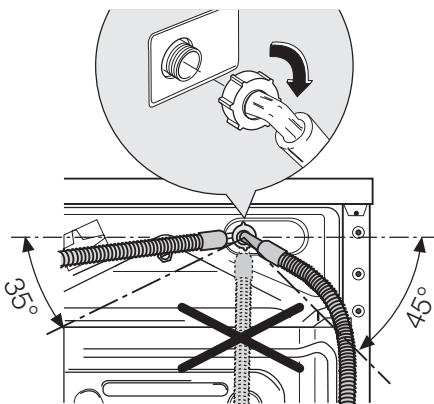


Water inlet

- Connect the hose to a tap with a 3/4" thread.



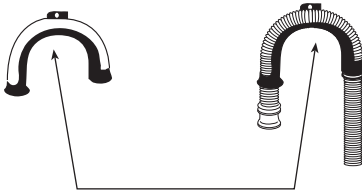
- Loosen the ring nut to angle the hose to the left or right depending on the position of your water tap. **Do not place the inlet hose downwards.**



- After positioning the inlet hose, be sure to tighten the ring nut again to prevent leaks.

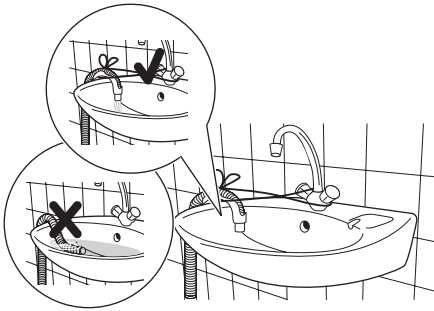
Water drainage

Form a hook at the end of the drain hose using the plastic hose guide, if necessary.



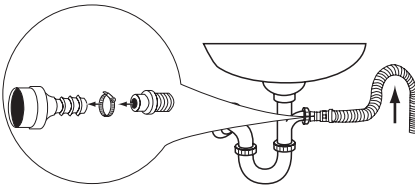
The end of the drain hose can be positioned in four ways:

- **Hooked over the edge of a sink using the plastic hose guide.**



Tie the plastic hose guide to the tap with a string to prevent that the drain hose un-hooks when the appliance is emptying.

- **Onto a sink outlet spigot.**

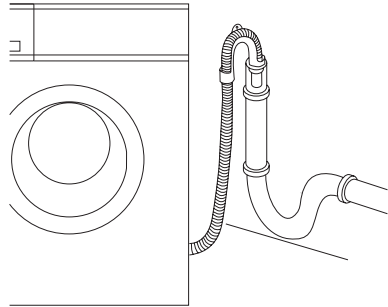


Push the drain hose onto the spigot and secure with a clip, ensure a loop is

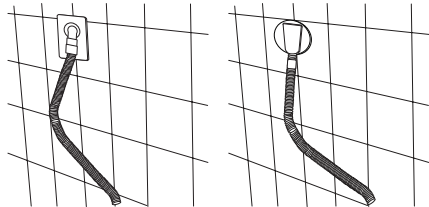
formed in the drain hose to prevent waste from the sink entering the appliance.

If the outlet spigot has not been used before, remove any blanking plug that may be in place.

- **Directly into a drain pipe at a height** of not less than 60 cm and not more than 100 cm. The end of the drain hose must always be **ventilated**, i.e. the inside diameter of the drain pipe must be larger than the outside diameter of the drain hose. The drain hose must not be kinked.

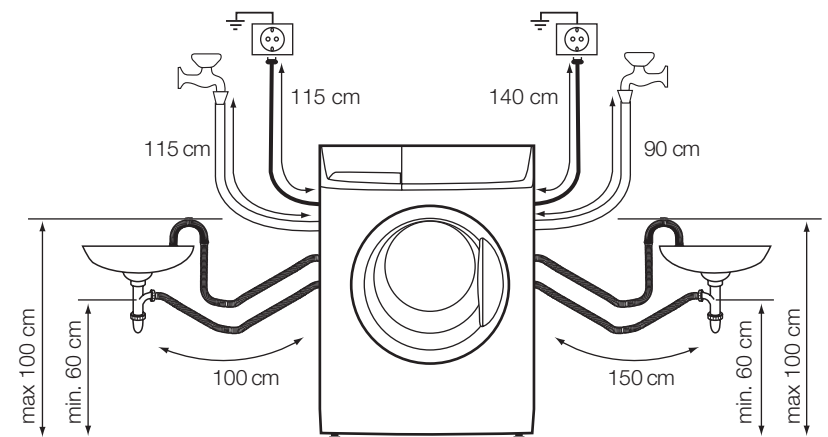


- **Directly to a built-in drain pipe** in the room wall.



- **i** The drain hose may be extended to a maximum of 4 metres. An additional drain hose and joining piece is available from your Local Centre.

Connections overview



Electrical connection

- The appliance must be earthed.
- Make sure that the electrical information on the rating plate agree with your domestic power supply.
- Always use a correctly installed shock-proof socket.
- Do not use multi-way plugs, connectors and extension cables. There is a risk of fire.
- Do not replace or modify the mains cable yourself. Contact the After Sales Service.

- Make sure that the mains plug and cable is not squashed or damaged by the back of the appliance.
- Make sure that the mains plug is accessible after installation.
- Do not pull the mains cable to disconnect the appliance. Always pull the mains plug.
- This appliance complies with the E.E.C. Directives.



FIRST USE

- i** • Ensure that the electrical and water connections comply with the installation instructions.
- i** • Ensure that the drum is empty.
- i** • Before the first wash, run a cotton cycle at the highest temperature

without any laundry in the machine, to remove any manufacturing residue from the drum and tub. Pour 1/2 a measure of detergent into the main wash compartment and start the machine.

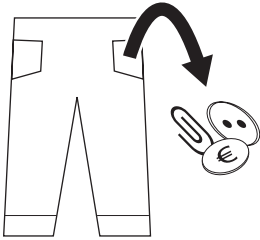
DAILY USE

Sort out the laundry

Follow the wash code symbols on each garment label and the manufacturer's washing instructions. Sort the laundry as follows: whites, coloureds, synthetics, delicates, woollens.

Before Loading The Laundry

Important! Make sure that no metal objects are left in the laundry (e.g. hair clips, safety pins, pins). Button up pillowcases, close zip fasteners, hooks and poppers. Tie any belts or long tapes. Remove any hooks (e.g. curtains).



- Never wash whites and coloureds together. Whites may lose their «whiteness» in the wash.
- New coloured items may run in the first wash; they should therefore be washed separately the first time.
- Rub particularly soiled areas with a special detergent or detergent paste.
- Treat curtains with special care.
- Wash the socks and the gloves inside the bag or a net.

Remove stubborn stains before washing:

Blood: treat fresh stains with cold water. For dried stains, soak overnight in water with a special detergent then rub in the soap and water.

Oil based paint: moisten with benzine stain remover, lay the garment on a soft cloth and dab the stain; treat several times.

Dried grease stains: moisten with turpentine, lay the garment on a soft surface and dab the stain with the fingertips and a cotton cloth.

Rust: oxalic acid dissolved in hot water or a rust removing product used cold. Be careful with rust stains which are not recent since the cellulose structure will already have been damaged and the fabric tends to hole.

Mould stains: treat with bleach, rinse well (whites and fast coloureds only).

Grass: soap lightly and treat with bleach (whites and fast coloureds only).

Ball point pen and glue: moisten with acetone²⁾, lay the garment on a soft cloth and dab the stain.

Lipstick: moisten with acetone as above, then treat stains with methylated spirits. Treat any residual marks with bleach.

Red wine: soak in water and detergent, rinse and treat with acetic or citric acid, then rinse. Treat any residual marks with bleach.

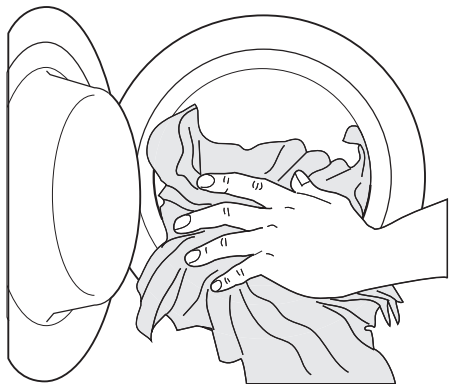
Ink: depending on the type of ink, moisten the fabric first with acetone²⁾, then with acetic acid; treat any residual marks on white fabrics with bleach and then rinse thoroughly.

Tar stains: first treat with stain remover, methylated spirits or benzine, then rub with detergent paste.

Open the door by carefully pulling the door handle outwards

Load the laundry

Place the laundry in the drum, one item at a time, shaking them out as much as possible.



Maximum Loads




Recommended loads are indicated in the «Washing Programmes».

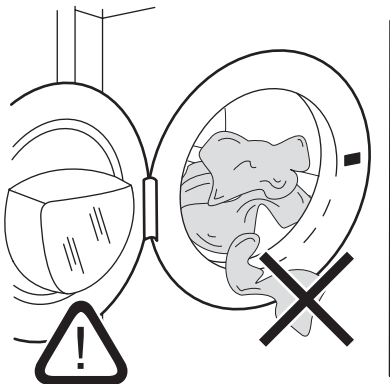
General rules:

- **Cotton, linen:** drum full but not too tightly packed;
- **Synthetics:** drum no more than half full;
- **Delicate fabrics and woollens:** drum no more than one third full.

²⁾ do not use acetone on artificial silk.

Close the door gently

 **Warning!** Make sure that any fabrics were not trapped when closing the door.



Detergents and additives

Good washing results also depend on the choice of detergent and use of the correct quantities to avoid waste and protect the environment.

Although biodegradable, detergents contain substances which, in large quantities, can upset the delicate balance of nature.

The choice of detergent will depend on the type of fabric (delicates, woollens, cottons, etc.), the colour, washing temperature and degree of soiling.

All commonly available washing machine detergents may be used in this appliance:

- powder detergents for all types of fabric,
- powder detergents for delicate fabrics (40°C max) and woollens,
- liquid detergents, preferably for low temperature wash programmes (60°C max) for all types of fabric, or special for woollens only.

Quantity of detergent to be used

The type and quantity of detergent will depend on the type of fabric, load size, degree of soiling and hardness of the water used.

For the quantity of detergent, refer always to what is written on the product packing. Use less detergent if:

- you are washing a small load,

- the laundry is lightly soiled,
- large amounts of foam form during washing.



Degrees of water hardness

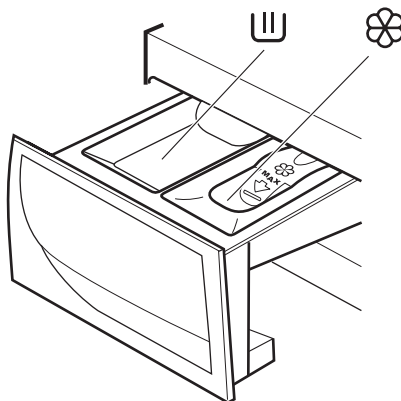
Water hardness is classified in so-called “degrees” of hardness. Information on hardness of the water in your area can be obtained from the relevant water supply company, or from your local authority.


If the water hardness degree is medium or high we suggest you to add a water softener following always the manufacturer’s instructions.


When the degree of hardness is soft, read just the quantity of the detergent.

Open the detergent dispenser drawer

 Compartment for powder or liquid detergent used for main wash.  Compartment for liquid additives (fabric softener, starch).

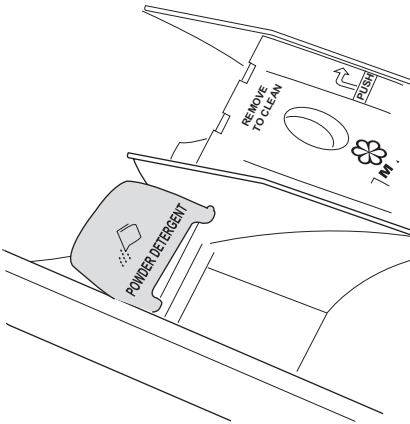


 **Warning!** If you wish to carry out the prewash, pour the detergent among washing items into the drum.

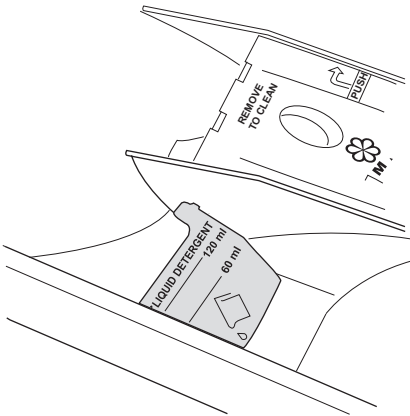
 **Warning!** Depending on the type detergent you use (powder or liquid), ensure that the flap, placed in the main wash compartment, is in the desired position.

Flap for powder or liquid detergent

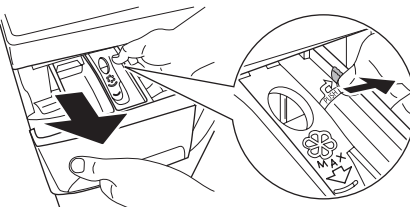
UP- Flap position if using POWDER detergent



DOWN - Flap position if using LIQUID detergent during main wash



If the flap is not in the desired position:

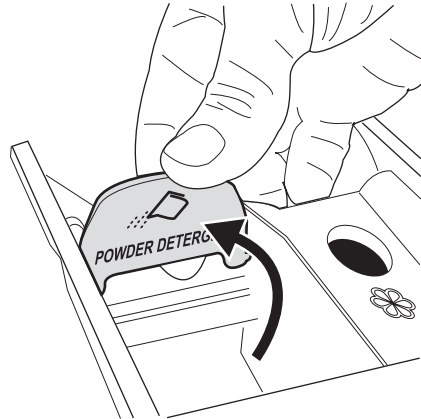



- Remove the drawer. Push the drawer edge outwards where indicated by the

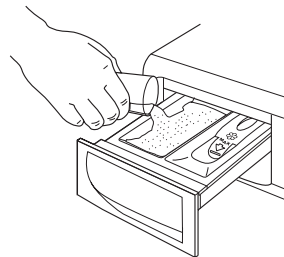
arrow (PUSH) to facilitate drawer removal.

The flap is down and you wish to use powder detergent:

- Rotate the flap upwards. Ensure to fit the flap completely in.
- Carefully put the drawer back.

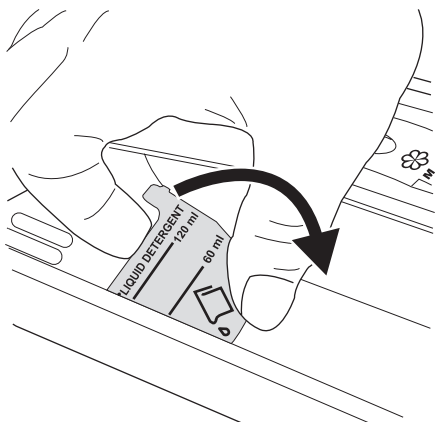


- Measure out the detergent.
- Pour the powder detergent into the main wash compartment .



The flap is up and you wish to use liquid detergent:

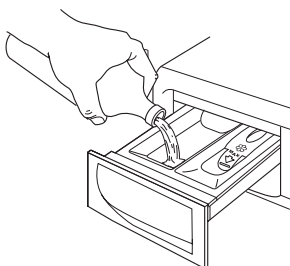
- Rotate the flap downwards.
- Carefully put the drawer back.



- Measure out the detergent.

i For the quantity of detergent, refer always to what is written on the product packing and ensure that the detergent can be poured in the drawer.

- Pour the liquid detergent in the compartment without exceeding the limit indicated in the flap. The detergent must be placed in the appropriate compartments of the dispenser drawer before starting the wash programme.

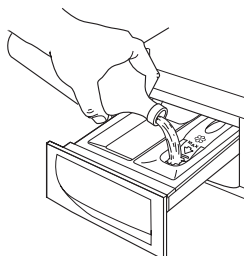


- Warning!** Do not use the flap in "DOWN" position with:
- Gelatinous detergent or thick detergent.
 - Powder detergent.
 - With programmes with prewash.
 - Do not use liquid detergent if the washing programme doesn't start immediately.

i In all above listed cases, use the flap in "UP" position .

Measure out the fabric softener

Pour fabric softener or any additives into the compartment marked (do not exceed the «MAX» mark in the drawer). Any additives must be placed in the appropriate compartments of the dispenser drawer just before starting the wash programme.

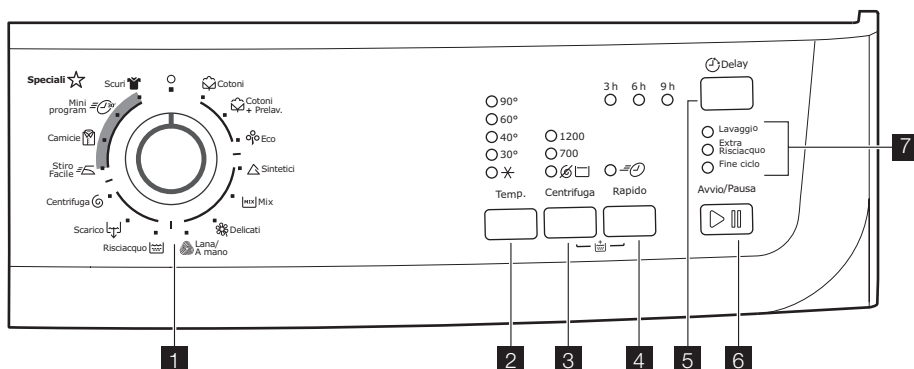


Close the detergent dispenser drawer

Set your washing programme

The control panel permits to select a washing programmes and different options. When an option button is selected, the corresponding pilot light is on. Otherwise it is off.

i For compatibility among washing programmes and options, see the "Washing Programme Chart". If an incorrect option is selected, the integrated red pilot light of the button **6** flashes 3 times.

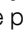



1 Programme selector dial








Turn the programme selector dial to the required programme. The selector dial can be turned either clockwise or counter-clockwise. The green pilot light of the button **6** starts flashing: the appliance is now switched on.

i If you turn the programme selector dial to another programme when the appliance is working, the red pilot light of the button **6** will flash 3 times to indicate a wrong selection. The appliance will not perform the new selected programme.

- To **switch the appliance off**, turn the programme selector dial to the position .
- To **cancel** or **change** a running programme, switch the appliance off by turning the programme selector dial to the position . Select the new programme by turning the selector to the desired programme. Start the new programme by pressing the button **6** again. The water in the tub will be not emptied out.

2 Temperature button

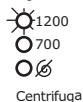
-  90°
-  60°
-  40°
-  30°
-  *
- Temp.



Push the temperature button to select the most suitable temperature for washing your laundry .

 : Cold wash.

3 Spin reduction and No Spin option



By selecting a programme, the appliance proposes automatically the maximum spin speed provided for that programme.

Press this button repeatedly to change the spin speed, if you want your laundry to be spun at a different speed.

The relevant light illuminates.

No Spin

By selecting this option, all spinning phases are suppressed and replaced by a drain, so as not to wrinkle the laundry. Recommended for extremely delicate fabrics.

On some programmes the rinses will be performed with more water.

4 Super Quick



Super Quick



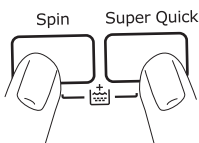
By pressing this button the corresponding pilot light illuminates.

Short cycle for lightly soiled items or for laundry which needs only freshening up.

With this option, a reduced load of laundry is recommended:

- Cottons 3 Kg
- Synthetics and delicates 1,5 Kg

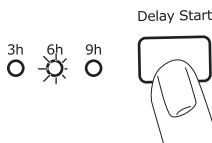
3 + 4 Extra Rinse



This appliance is designed for saving water. However, for people with very delicate skin (allergic to detergents) it may be necessary to rinse the laundry using an extra quantity of water.

Press simultaneously the buttons **3** and **4** for some seconds: the pilot light **7.2** comes on. This function stays permanently on. To remove it press the same buttons again until the pilot light **7.2** goes off.

5 Delay Start



The start of the programme can be delayed by 9, 6 or 3 hours by means of this button. The relevant light illuminates.

You must select this option after you have set the programme and before you start the programme.

Select a delayed start:

- select the programme and the required options;
- select the delay start by pressing the button **5**;
- press the button **6**:
 - the appliance starts its hourly countdown.
 - The programme will start after the selected delay has expired.

Cancelling the delayed start after having started the programme:

- set the appliance to PAUSE by pressing the button **6**;
- press the button **5** once, the light relevant to the selected delay goes off;
- press the button **6** again to start the programme.

The DELAY START **cannot** be selected with the drain programme.


Important! The selected delay can be changed only after selecting the washing programme again. The door will be locked throughout the delay time. If you need to open the door, you must set the appliance to PAUSE (by pressing the button **6**) and then wait a few minutes. After you have closed the door, press the button **6** again.

6 Start/Pause

Start/Pause



Start the programme by pressing the button 6

- To **start** the selected programme, press the button **6**, the corresponding green pilot light stops flashing. The pilot light **7.1** illuminates to indicate that the appliance starts operating and the door is locked. If you have chosen a delayed start, the appliance will begin the countdown.
- To **interrupt** a programme which is running, press the button **6**: the corresponding green pilot light starts flashing. It is possible to **change** some options of a running programme before the programme carries them out.
- To **restart** the programme from the point at which it was interrupted, press the button **6**.
- After the programme has started the door is locked. If, for any reason, you need to **open the door**, set firstly the appliance to PAUSE by pressing the button **6**. After a few minutes it will be possible to open the door. If the door remains locked, this means that the appliance is already heating or that the water level is too high. In any case, do not try to force the door! If you cannot open the door but you need to open it you have to switch the appliance off by turning the selector dial to . After a few minutes the door can be opened (**pay attention to the water level and temperature!**). After closing the door, it is necessary to select the programme and options again and to press the button **6**.

Indicator pilot lights

7.1



7.2



7.3




- When you start the programme by pressing the button **6**, the washing phase pilot light (**7.1**) illuminates. This means that the appliance is operating.
- The additional rinses pilot light (**7.2**) illuminates when the appliance performs an extra rinse.
- When the programme has finished the end cycle pilot light (**7.3**) comes on.


At the end of the programme

The appliance stops automatically. The pilot light of the button **6** and the pilot light corresponding to the just finished washing phase go off. The light **7.3** illuminates.


If a programme or an option that ends with water left in the tub has been selected and the door remains locked to indicate that the water must be emptied out before opening the door.


Follow the below instructions to empty out the water:

- Turn the programme selector dial to .
- Select the draining or spinning programme.
- Reduce the spin speed if needed, by pressing the relevant button.
- Press the button **6**.

At the end of the programme, the door can be now opened. Turn the programme selector dial to  to switch the appliance off.

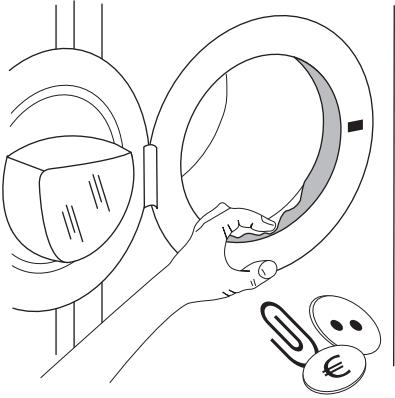
Remove the laundry from the drum and carefully check that the drum is empty. If you do not intend to carry out another wash, close the water tap. Leave the door open to prevent the formation of mildew and unpleasant smells.

 **Warning!** If there are children or pets in the house, **activate the child safety device** in the inner side of the door frame (for more details read "Child safety" in the chapter "Safety Information").







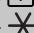






 **Stand by:** during programme setting up and once the programme has finished, if the programme selector dial and any button are not touched, after a few minutes the energy saving system is enabled. The pilot lights go off. The green pilot light of the button **6** flashes with a low frequency. By pressing any button the appliance will come out of the energy saving status.


Door seal


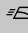





At the end of every cycle, check from the door seal and remove objects that could be trapped in the fold.



WASHING PROGRAMMES

Programme - Maximum and Minimum Temperature - Cycle Description - Maximum Spin Speed - Maximum Fabrics Load - Type of Laundry	Options	Detergent Compartment
 COTTON 90° -  (Cold) Main wash - Rinses - Maximum spin speed: 1200 rpm Max. load 6 kg - Reduced load 3 kg White, coloured cotton and linen. Normally soiled items.	SPIN REDUCTION, RINSE HOLD, SUPER QUICK ¹⁾ , EXTRA RINSE, DELAY START	 
 +  COTTON WITH PREWASH 90° -  (Cold) Prewash - Main wash - Rinses - Maximum spin speed: 1200 rpm Max. load 6 kg - Reduced load 3 kg White, coloured cotton and linen. Heavy soiled items.	SPIN REDUCTION, RINSE HOLD, SUPER QUICK ¹⁾ , EXTRA RINSE, DELAY START	 
  COTTON ECONOMY 60° - 40° Main wash - Rinses - Maximum spin speed: 1200 rpm Max. load 6 kg White and coloured cotton. This programme can be selected for slightly or normally soiled cotton items. The temperature will decrease and the washing time will be extended. This allows to obtain a good washing efficiency by saving energy.	SPIN REDUCTION, RINSE HOLD, EXTRA RINSE, DELAY START	 

Programme - Maximum and Minimum Temperature - Cycle Description - Maximum Spin Speed - Maximum Fabrics Load - Type of Laundry	Options	Detergent Compartment
 SYNTHETIC 60° -  (Cold) Main wash - Rinses - Maximum spin speed: 1200 rpm Max. load 3 kg - Reduced load 1,5 kg Synthetic or mixed fabrics: underwear, coloured garments, non-shrink shirts, blouses . Normally soiled items.	SPIN REDUCTION, RINSE HOLD, SUPER QUICK ¹⁾ , EXTRA RINSE, DELAY START	
 MIXED FABRICS Cold Main wash - Rinses - Maximum spin speed: 1200 rpm Max. load 3 kg Highly energy efficient cold wash programme for lightly soiled laundry. This programme requires a detergent which is active in cold water.	SPIN REDUCTION, RINSE HOLD, EXTRA RINSE, DELAY START	
 DELICATES 40° -  (Cold) Main wash - Rinses - Maximum spin speed: 700 rpm Max. load kg 3 - Reduced load 1,5 kg ¹⁾ Delicate fabrics: acrylics, viscose, polyester . Normally soiled items.	RINSE HOLD, SUPER QUICK ¹⁾ , EXTRA RINSE, DELAY START	
 WOOL/ HANDWASH   40° -  (Cold) Main wash - Rinses - Maximum spin speed: 1200 rpm Max. load 2 kg Machine washable wool, hand washable woollens and delicate fabrics with «hand washing» care symbol. Note: A single or bulky item may cause imbalance. If the appliance doesn't perform the final spin phase, add more items, redistribute the load manually and then select the spinning programme.	SPIN REDUCTION, RINSE HOLD, DELAY START	
 RINSE Rinse - Short spin speed 700 rpm. If a spin speed higher than 700 rpm is selected, by pressing the relevant button, the appliance performs a long spin. (Maximum spin speed: 1200 rpm) Max. load 6 kg To rinse and spin cotton garments which have been washed by hand. Select the EXTRA RINSE option to intensify the rinsing action. The appliance adds additional rinses.	SPIN REDUCTION, RINSE HOLD, EXTRA RINSE, DELAY START	
 DRAIN Draining of water For emptying out the water left in the drum.		

Programme - Maximum and Minimum Temperature - Cycle Description - Maximum Spin Speed - Maximum Fabrics Load - Type of Laundry	Options	Detergent Compartment
 SPIN Drain and long spin at maximum spin speed: 1200 rpm Max. load 6 kg Separate spin for hand washed garments and after programmes with the No Spin option selected. You can choose the spin speed by pressing the relevant button to adapt it to the fabrics to be spun. If a spin speed at 700 rpm or lower is selected, by pressing the relevant button, the appliance performs a short spin.	SPIN REDUCTION, DELAY START	
☆ Special programmes		
 EASY IRON 40° -  (Cold) Main wash - Rinses - Maximum spin speed: 700 rpm In order to obtain the best anti-creasing result, reduce the load of synthetic items. (Recommended load 1 kg) Synthetic or mixed fabrics. Gentle wash and spin to avoid any creasing. The appliance performs additional rinses.	SPIN REDUCTION ²⁾ , RINSE HOLD, EXTRA RINSE, DELAY START	
 5 SHIRTS 30° Main wash - Rinses - Maximum spin speed: 700 rpm Synthetics and mixed fabrics. Suitable for 5 - 6 shirts lightly soiled.	SPIN REDUCTION ²⁾ , DELAY START	
 MINI 30 30° Main wash - Rinses - Maximum spin speed 700 rpm Max. load 3 kg Synthetics and delicates. Lightly soiled items or which only needs freshening up.	DELAY START	
 JEANS 60° -  (Cold) Main wash - Rinses - Maximum spin speed: 1200 rpm Max. load 3 kg Trousers, shirts or jackets in denim and jersey realized with hi-tech materials. The Extra Rinse option is activated automatically.	SPIN REDUCTION, RINSE HOLD, DELAY START	

1) If you select the SUPER QUICK option by pressing button **4**, we recommend that you reduce the maximum load as indicated. Full loading is possible however with somewhat reduced cleaning results.
2) Available with RWP86109W only.

CONSUMPTION VALUES

Programme	Energy consumption (KWh)	Water consumption (litres)	Programme duration (Minutes)
White Cottons 90°	2.10	78	175
Cottons 60°	1.20	72	170
Cotton ECO 60° 1)	1.02	49	180
Cottons 40°	0.75	72	145

Programme	Energy consumption (KWh)	Water consumption (litres)	Programme duration (Minutes)
Synthetics 40°	0.60	57	95
Delicates 40°	0.60	65	75
Wool/ Handwash 30°	0.30	48	55

1) «Cottons Eco» at 60°C with a load of 6 kg is the reference programme for the data entered in the energy label, in compliance with EEC 92/75 standards.

- i** The consumption data shown on this chart is to be considered purely indicative, as it may vary depending on the quantity and type of laundry, on the inlet water temperature and on the ambient temperature.

CARE AND CLEANING

! **Warning!** Switch the appliance off and remove the mains plug from the socket before any cleaning action.

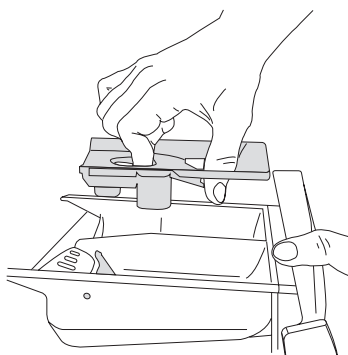
Maintenance Wash

With the use of low temperature washes it is possible to get a build up of residues inside the drum.

We recommend that a maintenance wash be performed on a regular basis.

To run a maintenance wash:

- The drum should be empty of laundry.
- Select the hottest cotton wash programme.
- Use a normal measure of detergent, must be a powder with biological properties.

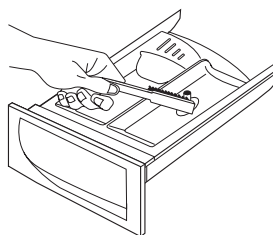
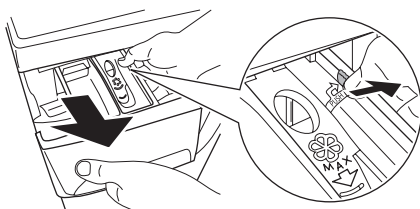


- Use a stiff brush to clean and remove all washing powder residue.

Cleaning the dispenser drawer

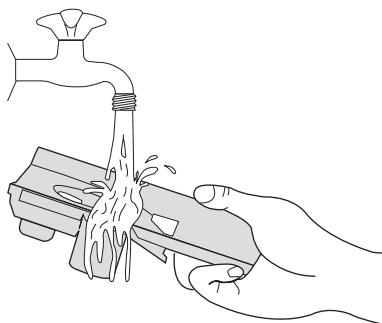
The washing powder and additive dispenser drawer should be cleaned regularly.

- Remove the drawer.

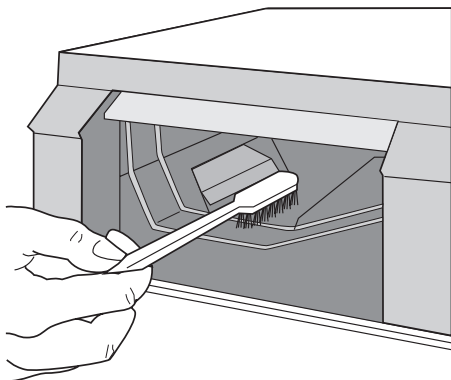


- Clean all the removed parts of the dispenser drawer under a tap to remove any traces of accumulated powder.

- To aid cleaning, the top part of the additive compartment should be removed.



- Use the previous brush to clean the recess, ensuring that upper and lower part of it is well cleaned.




After having cleaned the dispenser and the drawer recess, replace it.

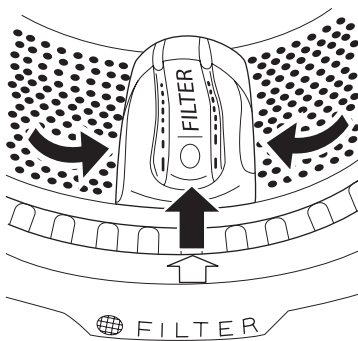
Cleaning the drain filter

The filter permits to hold fluff or foreign bodies left unawares in the laundry.

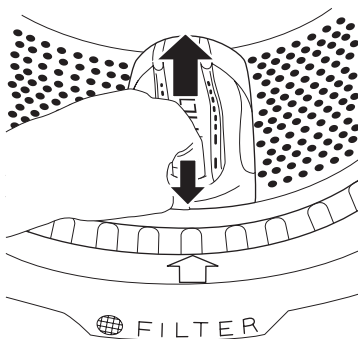
The pump must be cleaned regularly.


To clean the filter, proceed as follows:

- Turn programme selector dial to position .
- Unplug the appliance.;
- Open the door.
- Turn the drum and align the filter cover (**FILTER**) with the arrow on the door seal.;

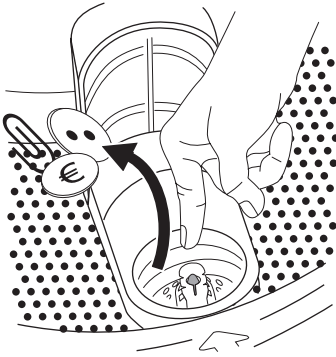


- Open the filter cover by pressing the special hook and by rotating the cover upwards.;

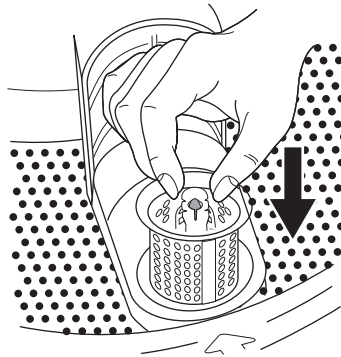


 **Warning!** Keep the filter cover open until the filter removal.

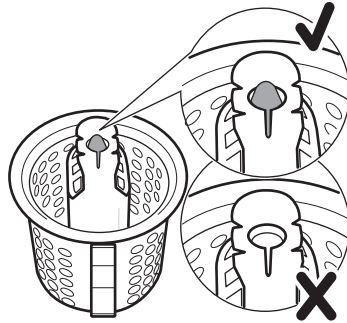
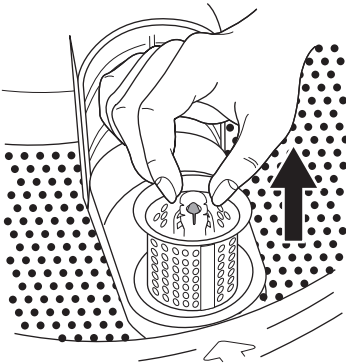
- Before removing the filter, remove any fluff or small objects from around the filter.



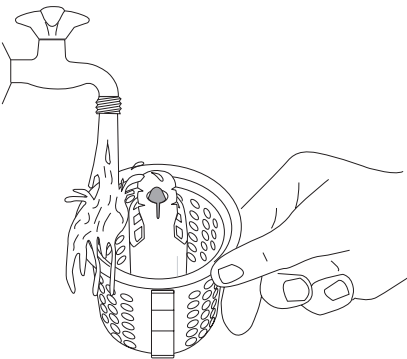
- Remove the filter and clean it under the tap.



- **The filter is inserted correctly when the indicator on its top is visible and blocked.**



- Close the filter cover.
- Insert the mains plug again.



- If necessary, place the filter cover in the right position again.
- Open the filter cover and insert the filter again.

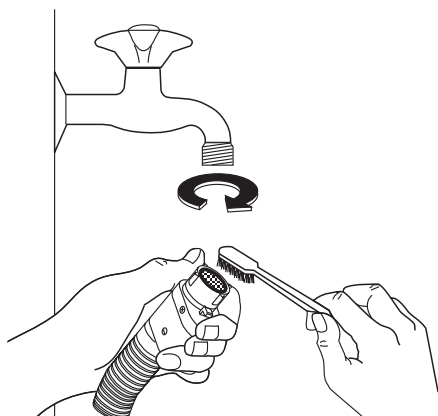


Cleaning the water inlet filters

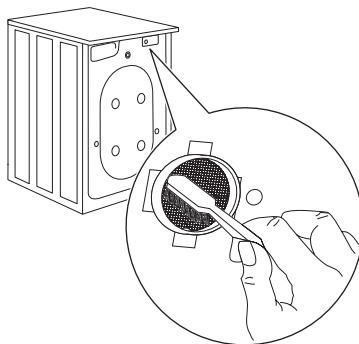
Important! If the appliance doesn't fill, it takes a long time to fill with water, the starting button flashes red or the display (if available) shows the relevant alarm (see chapter "What to do if..." for more details), check if the water inlet filters are blocked.

To clean the water inlet filters:

- Turn off the water tap.
- Unscrew the hose from the tap.
- Clean the filter in the hose with a stiff brush.



- Screw the hose back onto the tap. Make sure the connection is tight.
- Unscrew the hose from the appliance. Keep a towel nearby because some water may flow.
- Clean the filter in the valve with a stiff brush or with the piece of cloth.



- Screw the hose back to the appliance and make sure the connection is tight.
- Turn on the water tap.

WHAT TO DO IF...

The appliance does not start or stops during operation. Certain problems are due to lack of simple maintenance or oversights, which can be solved with the help of the indications described in the charts, without calling out an engineer.

During appliance operation it is possible that the **red** pilot light of the button **6** flash-

es and one of the indicator pilot lights illuminates to indicate that the appliance is not working.

Before contacting your local Service Centre, please carry out the checks listed below.

Fault code and mal- function	Possible cause - Solution
---------------------------------	---------------------------



The water tap is closed.

- Open the water tap.

The inlet hose is squashed or kinked.

- Check the inlet hose connection.

The filter in the inlet hose or the inlet valve filter are blocked

- Clean the water inlet filters (read "Cleaning the water inlet filters" for more details).



The light of button 6 flashes and the light 7.1 illuminates:
Problem with the water supply



The drain hose is squashed or kinked.

- Check the drain hose connection.

The drain filter is clogged

- If the appliance stops working without discharging the water , first carry out an emergency drain:
 - Turn the programme selector dial to ○ ;
 - Unplug the appliance;
 - Close the water tap;
 - If necessary, wait until the water has cooled down;
 - Unscrew the drain hose from the rear support (see "Frost precaution") and unhook it from the sink or spigot;
 - Let it run along the floor;
 - Place a bowl on the floor and place the end of the draining hose into the bowl. The water should drain by gravity into the bowl. When the bowl is full, empty it. Repeat the procedure until water stops flowing out ;
 - Screw the draining hose to the rear support and reposition it;
 - Open the door and remove the laundry;
 - Carry out the drain filter cleaning as described in "Cleaning the drain filter";
 - At the end of cleaning action, close the door and insert the mains plug again;
 - Run a drain programme to check if the appliance works now.



The light of button 6 flashes and the light 7.2 illuminates:
Problem with the water drainage



The door has not been closed or is not closed properly.

- Close firmly the door.



The light of button 6 flashes and the light 7.3 illuminates:
Door open

The appliance does not start or stops during operation without any visible alarm.

Before contacting your local Service Centre, please carry out the checks listed below.

Malfunction	Possible cause / Solution
The appliance does not start:	<p>The plug is not properly inserted in the power socket.</p> <ul style="list-style-type: none"> • Insert the plug into the power socket. <p>There is no power at the socket.</p> <ul style="list-style-type: none"> • Please check your domestic electrical installation. <p>The main fuse has blown.</p> <ul style="list-style-type: none"> • Replace the fuse. <p>The programme selector dial is not correctly positioned and the button 6 has not been pressed.</p> <ul style="list-style-type: none"> • Please turn the selector dial and press the button 6 again. <p>The delay start has been selected.</p> <ul style="list-style-type: none"> • If the laundry are to be washed immediately, cancel the delay start.
The appliance fills then empties immediately:	<p>The end of the drain hose is too low.</p> <ul style="list-style-type: none"> • Refer to paragraph in "Water drainage" in chapter "Installation".
The appliance does not empty and/or does not spin:	<p>An option or a programme that ends with the water still in the tub or a that eliminates all the spinning phases has been selected.</p> <ul style="list-style-type: none"> • Select the draining or spinning programme. <p>The laundry is not evenly distributed in the drum.</p> <ul style="list-style-type: none"> • Redistribute the laundry.
There is water on the floor:	<p>Too much detergent or unsuitable detergent (creates too much foam) has been used.</p> <ul style="list-style-type: none"> • Reduce the detergent quantity or use another one. <p>Check whether there are any leaks from one of the inlet hose fittings. It is not always easy to see this as the water runs down the hose; check to see if it is damp.</p> <ul style="list-style-type: none"> • Check the water inlet hose connection. <p>The drain or inlet hose is damaged.</p> <ul style="list-style-type: none"> • Replace it with a new one.
The door will not open:	<p>The programme is still running.</p> <ul style="list-style-type: none"> • Wait the end of washing cycle. <p>The door lock has not been released.</p> <ul style="list-style-type: none"> • Wait until the door lock is released. <p>There is water in the drum.</p> <ul style="list-style-type: none"> • Select drain or spin programme to empty out the water.
The appliance vibrates noisily:	<p>The transit bolts and packing have not been removed.</p> <ul style="list-style-type: none"> • Check the correct installation of the appliance. <p>The appliance is not levelled correctly.</p> <ul style="list-style-type: none"> • Adjust the feet. <p>The laundry is not evenly distributed in the drum.</p> <ul style="list-style-type: none"> • Redistribute the laundry. <p>Maybe there is very little laundry in the drum.</p> <ul style="list-style-type: none"> • Load more laundry.

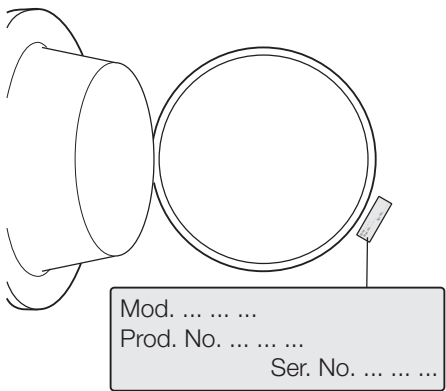
Malfunction	Possible cause / Solution
Spinning starts late or the appliance does not spin:	<p>The electronic unbalance detection device has cut in because the laundry is not evenly distributed in the drum. The laundry is redistributed by reverse rotation of the drum. This may happen several times before the unbalance disappears and normal spinning can resume. If, after 10 minutes, the laundry is still not evenly distributed in the drum, the appliance will not spin. In this case, redistribute the load manually and select the spin programme.</p> <ul style="list-style-type: none">• Load more laundry. <p>The load is too small.</p> <ul style="list-style-type: none">• Add more items, redistribute the load manually and then select the spinning programme.
No water is visible in the drum:	<p>Appliances based on modern technology operate very economically using very little water without affecting performance.</p>
Unsatisfactory washing results	<p>Too little detergent or unsuitable detergent has been used.</p> <ul style="list-style-type: none">• Increase the detergent quantity or use another one. <p>Stubborn stains have not been treated prior to washing.</p> <ul style="list-style-type: none">• Use commercial products to treat the stubborn stains. <p>The correct temperature was not selected.</p> <ul style="list-style-type: none">• Check if you have selected the correct temperature. <p>Excessive laundry load.</p> <ul style="list-style-type: none">• Reduce the laundry load.
The appliance makes an unusual noise	<p>The appliance is fitted with a type of motor which makes an unusual noise compared with other traditional motors. This new motor ensures a softer start and more even distribution of the laundry in the drum when spinning, as well as increased stability of the appliance.</p>

After completing these checks, switch on the appliance and press the button **6** to re-start the programme.

If the malfunction shows again, contact your Service Centre.

The necessary data for the service centre is on the rating plate. We recommend that you write the data here:

Model description (MOD.)
Product number (PNC)
Serial number (S.N.)





www.electrolux.com/shop

