

Part I

Client

This part of the manual explains how to set up and use the client application on a Nokia 6730. Most Symbian based phones will be similar, but might not be exactly identical. To deploy the application via data cable, ensure that the Nokia PC Suite is installed first.

1 Requirements

As the the client application is a Java ME application, it requires a Java ME compatible phone. Additionally, it requires support for two additional APIs: the JSR 82 Bluetooth API and the JSR 179 Location API. Without these the application will not be able to function properly. For deployment, a Bluetooth or data cable connection is also required to copy the application on to the phone.

2 Installation

2.1 Deployment

Before we can install and use the application, it needs to be deployed on the phone.

2.1.1 Bluetooth

Deployment via Bluetooth is simple. Initially, select the *.jar and *.jad files of the application and copy these. On Windows, simply pair the target device with the computer. Then open *My Computer* and then select the device. Open the folder labelled *C:*, then the folder named *Data* and finally the folder named *Installs*. Paste the two files here.

2.1.2 Data Cable

Deployment via data cable is very similar. Connect the device and select the *PC Suite* mode. Select the *.jar and *.jad files of the application and copy these. Then open *My Computer*, select *Nokia Phone Browser*, select the device and then open the folder labelled *C:*, then the folder named *Data* and finally the folder named *Installs*. Paste the two files here.

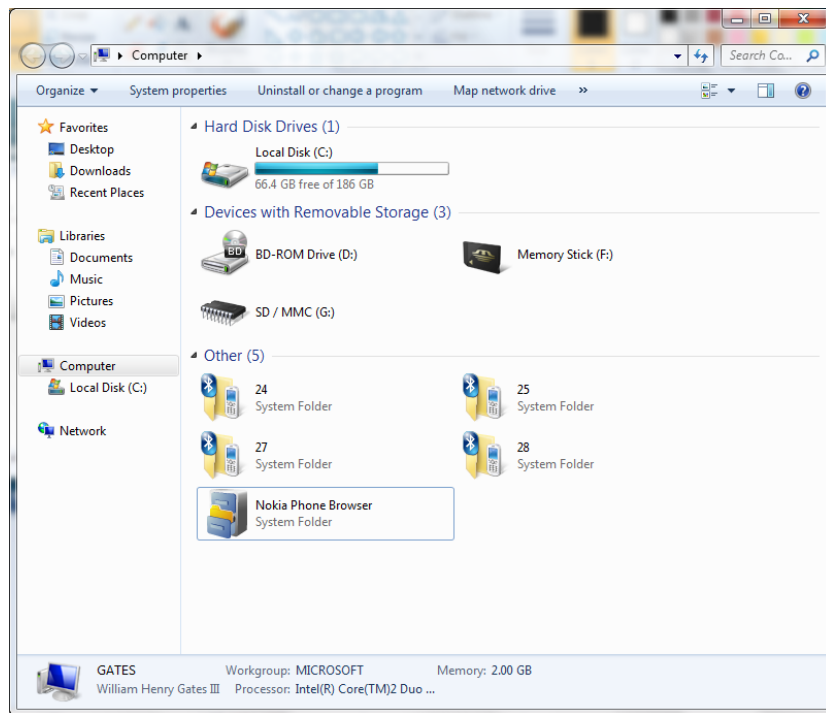


Figure 1: The Nokia Phone Browser and various Bluetooth devices in *My Computer*

2.2 Installation

To install the application, select the menu (the silver button or the soft-key labelled *Menu*) and select *Applications, Installations, App. mgr., Installation Files*. Select the application and follow the steps on screen until the application is installed (simply select *Yes* on every prompt).

After installing the application, it may be advisable to configure the privileges of the application to reduce ‘nag screens’. This can be done by going back into the application manager (known as the *App. mgr.* on the phone). From here select *Installed apps..* Select the application and press *Settings*. Under *Access point* select *3*; under *Network Access* select *Always allowed*; repeat this for *Connectivity, Read user data, Edit user data* and *Positioning*. Finally close this menu, by pressing the soft-key labelled *Back*

3 Executing the Application

To start the application, open the main menu and select *Applications* and *Installations* afterwards. Select the application and open it by pressing the *Open* soft-key.

4 Functionality

4.1 The Home Screen

Once the application is opened, you will see the home screen. On this screen you can see with which diseases your device has received and what status they are. You can also see information about various parts of the application including *Data Collection*, *Data Transmission*, *Disease Reception* and *Disease Transmission*. From this screen, two functions can be selected: *Minimize* and *Options*. *Minimize* simply hides the application, whilst *Options* opens the options menu. Figure 2 shows this screen.

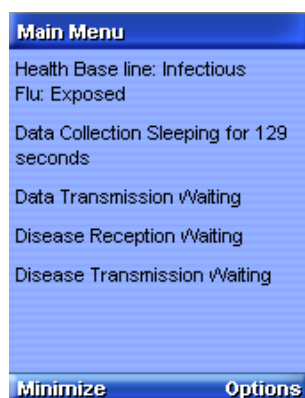


Figure 2: The Home Screen

4.1.1 Data Collection

Indicates the data collection status, such as the gathering of GPS and Bluetooth data as well as the progress of the Bluetooth service scan.

4.1.2 Data Transmission

Indicates the whether or not the application is currently transmitting data to the server.

4.1.3 Disease Reception

Indicates what diseases are currently being received or have recently been received.

4.1.4 Disease Transmission

Indicates whether the device is currently attempting to transmit diseases to another device, and if so, which device.

4.2 The Options Menu

The options menu offers various settings and the ability to properly quit the application. Figure 3 shows the options screen.

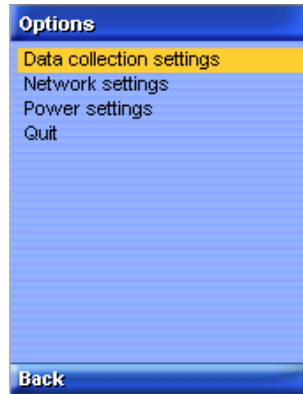


Figure 3: The Home Screen

4.2.1 Data Collection Settings

Set whether GPS and Bluetooth data should be collected or just Bluetooth.

4.2.2 Power Mode

Offers the choice between normal power and low power mode. Low power mode uses longer intervals between retrying to send data via the network and attempts to switch off the GPS chip after using it.

4.2.3 Network Settings

Allows the user to disable the transmission of logs to the server via 3G.

Part II Server

This part of the manual explains how to set up and use the server application in a Unix based environment. Setting it up on Windows Server should be similar.

5 Requirements

The server application requires an MS-SQL database using the tables specified in the technical manual. Access credentials and URL of the database have to be hardcoded into the application. Furthermore, the application requires the Java Virtual Machine as well as port 10001 opened on both the local computer and any firewall between it and the Internet.

6 Deployment

To deploy the server application, secure copy (scp) can be used. Simply change into the directory containing the distributable (ie. `dist/`, open a terminal window and enter the command `scp -R * www-fluphone:<target directory>` (use `www-fluphone` in case of using the FluPhone Server, otherwise type the hostname of the server that is being used).

7 Executing the Application

To run the application, ssh into the server by typing `ssh www-fluphone` into the command line (use `www-fluphone` in case of using the FluPhone Server, otherwise type the hostname of the server that is being used). Next change into the directory in which the distributable of the server is located using `cd <target directory>`. Then run the command `java -jar <application name>` and the server will run.

If you wish to have the server running in the background type the UNIX command `screen` first. This will open a virtual terminal that persists between sessions. Simply run the server in the ‘virtual’ terminal window. You can now press `<CTRL>+A+D`, which will hide the terminal leaving it running in the background, even if you log out of the shell. Type `screen -r` to bring the terminal back to the foreground. Figure 4 shows the execution of the server using `screen`, step by step.

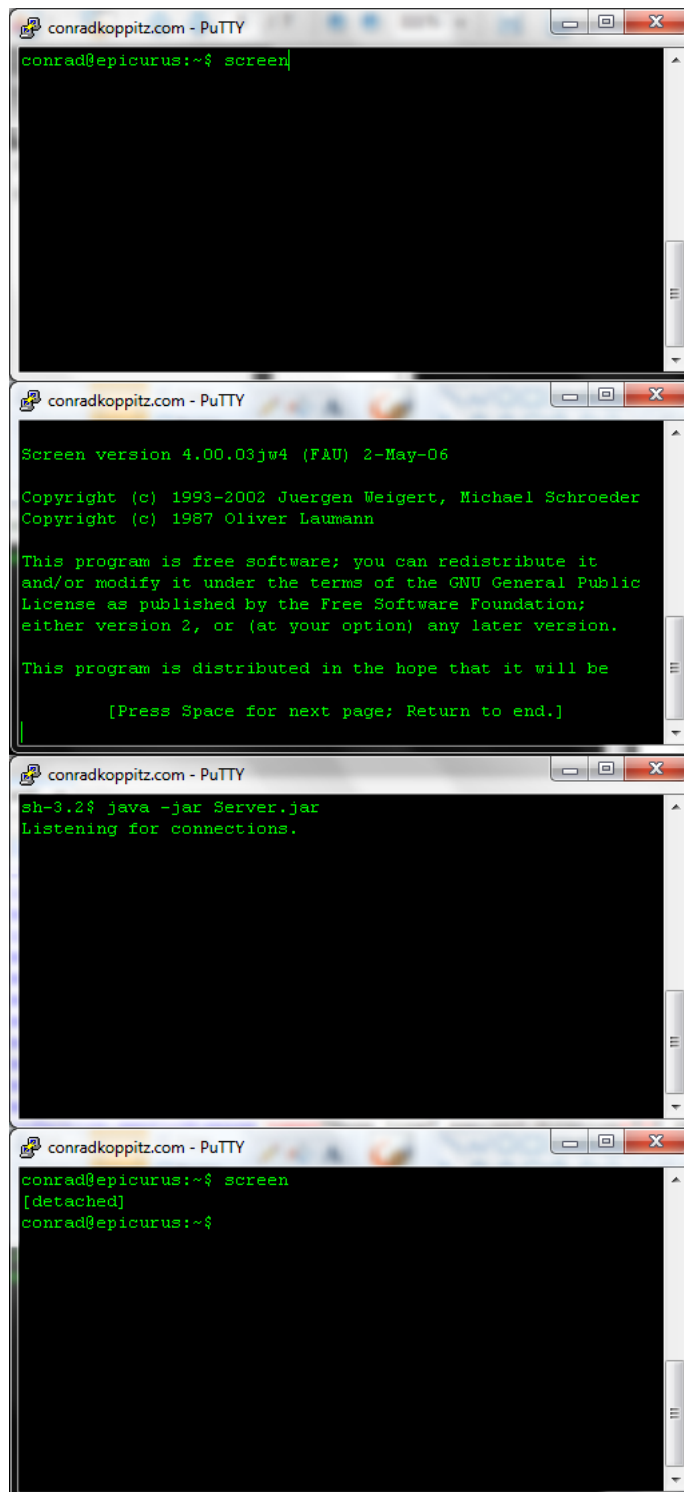


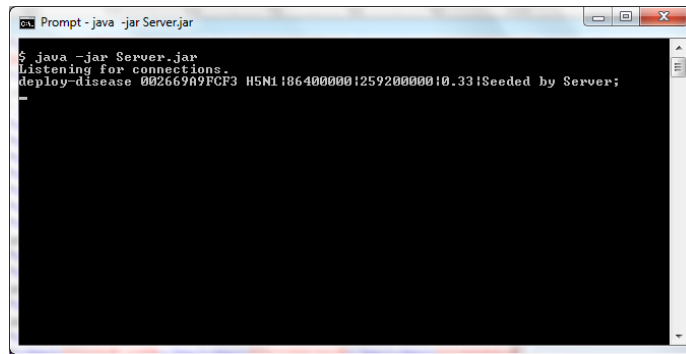
Figure 4: Using screen, step by step

8 Functionality

The server currently only supports two commands: `deploy-disease` which deploys a new disease on a phone and `exit`, which exits the application

8.1 Deploying a Disease

To deploy a disease on a remote device, type `deploy-disease <mac> <name>|<exposed duration>|<infectious duration>|<infection probability>|Seeded by server;`. This will deploy a disease with the name `<name>`, exposed duration `<exposed duration>`, infectious duration `<infectious duration>` and a probability of infecting another device of `<infection probability>` on the device with the MAC Address `<mac>`. Figure 5 gives an example of this process.



```
Prompt - java -jar Server.jar
$ java -jar Server.jar
Listening for connections.
deploy-disease 002667A7FCF3 H5N1186400000125920000010.33|Seeded by Server;
```

Figure 5: Deploy a disease via the server application