



ENGLISH

# OWNER'S MANUAL

# LCD TOUCH MONITOR

Please read this manual carefully before operating your set and retain it for future reference.

## LCD TOUCH MONITOR MODELS

17MB15T

19MB15T

This unit has been engineered and manufactured to ensure your personal safety, however improper use may result in potential electrical shock or fire hazards. In order to allow the proper operation of all safeguards incorporated in this display, observe the following basic rules for its installation, use, and servicing.

## On Safety

Use only the power cord supplied with the unit. In case you use another power cord, make sure that it is certified by the applicable national standards if not being provided by the supplier. If the power cable is faulty in any way, please contact the manufacturer or the nearest authorized repair service provider for a replacement. The appliance coupler is used as the disconnect device.

Please make sure the device is installed near the wall outlet to which it is connected and that the outlet is easily accessible.

Operate the display only from a power source indicated in the specifications of this manual or listed on the display. If you are not sure what type of power supply you have in your home, consult with your dealer.

Overloaded AC outlets and extension cords are dangerous. So are frayed power cords and broken plugs. They may result in a shock or fire hazard. Call your service technician for replacement.

As long as this unit is connected to the AC wall outlet, it is not disconnected from the AC power source even if the unit is turned off.

## Do not Open the Display:

- There are no user serviceable components inside.
- There are Dangerous High Voltages inside, even when the power is OFF.
- Contact your dealer if the display is not operating properly.

## To Avoid Personal Injury :

- Do not place the display on a sloping shelf unless properly secured.
- Use only a stand recommended by the manufacturer.
- Do not drop an object on or apply impact to the product. Do not throw any toys or objects on the product screen. It can cause injury to human, problem to product and damage the display.

## To Prevent Fire or Hazards:

- Always turn the display OFF if you leave the room for more than a short period of time. Never leave the display ON when leaving the house.
- Keep children from dropping or pushing objects into the display's cabinet openings. Some internal parts carry hazardous voltages.
- Do not add accessories that have not been designed for this display.
- When the display is to be left unattended for an extended period of time, unplug it from the wall outlet.
- In the presence of thunder and lightning, never touch the power cord and signal cable because it can be very dangerous. It can cause electric shock.

## On Installation

Do not allow anything to rest upon or roll over the power cord, and do not place the display where the power cord is subject to damage.

Do not use this display near water such as near a bathtub, washbowl, kitchen sink, laundry tub, in a wet basement, or near a swimming pool.

Displays are provided with ventilation openings in the cabinet to allow the release of heat generated during operation. If these openings are blocked, built-up heat can cause failures which may result in a fire hazard. Therefore, NEVER:

- Block the bottom ventilation slots by placing the display on a bed, sofa, rug, etc.
- Place the display in a built-in enclosure unless proper ventilation is provided.
- Cover the openings with cloth or other material.
- Place the display near or over a radiator or heat source.

Do not rub or strike the Active Matrix LCD with anything hard as this may scratch, mar, or damage the Active Matrix LCD permanently.

Do not press the LCD screen with your finger for a long time as this may cause some afterimages.

Some dot defects may appear as Red, Green or Blue spots on the screen.

However, this will have no impact or effect on the display performance.

If possible, use the recommended resolution to obtain the best image quality for your LCD display. If used under any mode except the recommended resolution, some scaled or processed images may appear on the screen. However, this is characteristic of the fixed-resolution LCD panel.

Displaying a still image for long time on the monitor may leave persistent image or stain on the monitor screen. To avoid this problem, use a screen saver and power off when this product is not used. Persistent image or stain caused by long time usage are not covered by the warranty on this product.

Do not shock or scratch the front and sides of the screen with metallic objects.

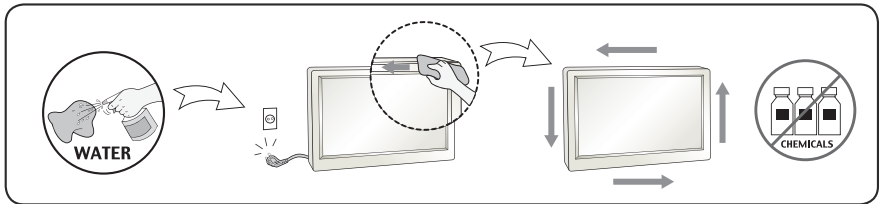
Otherwise, it may cause damage to the screen.

Make sure the panel faces forward and hold it with both hands to move. If you drop the product, the damaged product can cause electric shock or fire. Contact an authorized the service center for repair.

Avoid high temperatures and humidity.

## On Cleaning

- Unplug the display before cleaning the face of the display screen.
- Use a slightly damp (not wet) cloth. Do not use an aerosol directly on the display screen because over-spraying may cause electrical shock.
- When cleaning the product, unplug the power cord and scrub gently with a soft cloth to prevent scratching. Do not clean with a wet cloth or spray water or other liquids directly onto the product. An electric shock may occur. (Do not use chemicals such as benzene, paint thinners or alcohol)
- Spray water onto a soft cloth 2 to 4 times, and use it to clean the front frame; wipe in one direction only. Too much moisture may cause staining.



## On Repacking

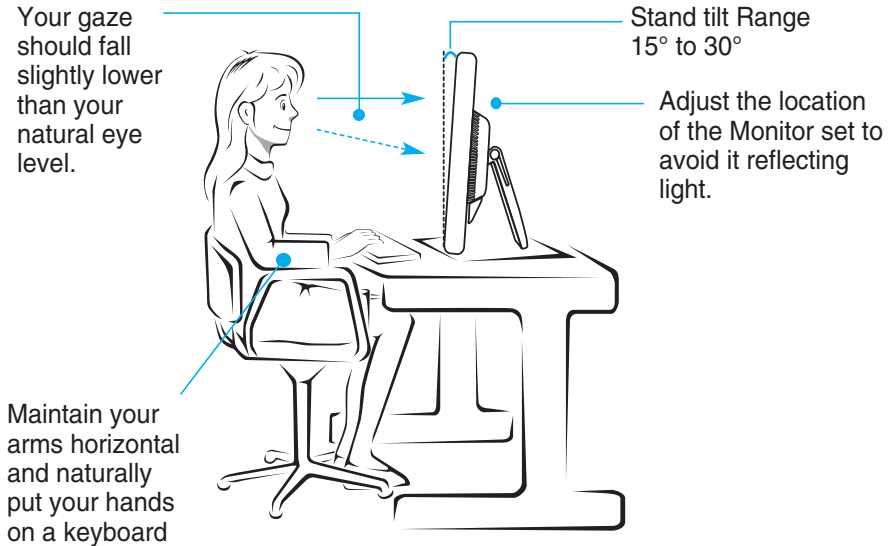
- Do not throw away the carton and packing materials. They make an ideal container in which to transport the unit. When shipping the unit to another location, repack it in its original material.

## On Disposal

- The fluorescent lamp used in this product contains a small amount of mercury.
- Do not dispose of this product with general household waste.
- Disposal of this product must be carried out in accordance to the regulations of your local authority.

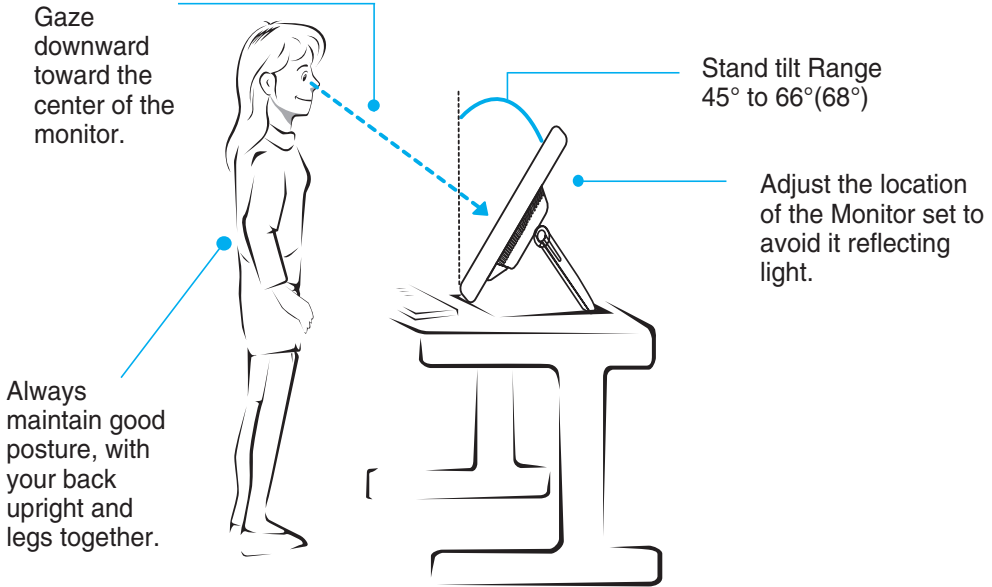
## The proper posture for using the product when seated

- Adjust the screen so that you can comfortably look at it at a slight downward angle from your natural eye level.
- Take a break for approximately 10 minutes every hour to reduce any fatigue caused by long-time usage.
- The stand of the touch monitor allows the product to be used in the optimum position.
- Adjust the stand angle between 15 to 30 degrees to create the optimum user environment.



## The proper posture for using the product when standing

- Adjust the screen so that you can comfortably look at it at a slight downward angle from your natural eye level.
- Take a break for approximately 10 minutes every hour to reduce any fatigue caused by long-time usage.
- The stand of the touch monitor allows the product to be used in the optimum position.
- Adjust the stand angle between 45 to 66(68) degrees to create the optimum user environment.

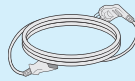


## !!! Thank you for selecting LGE products !!!

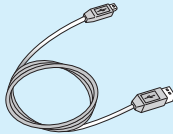
Please make sure the following items are included with your monitor. If any items are missing, contact your dealer.



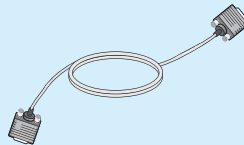
**Owner's Manual CD / Cards**



**Power Cord**



**USB Cable**



**15-pin D-Sub Signal Cable**

(To set it up, this signal cable may be attached to this product before shipping out.)

### NOTE

- This accessories may look different from those shown here.
- User must use shielded signal interface cables (D-sub 15 pin cable) with ferrite cores to maintain standard compliance for the product.

# Basic Adjustments of the Stand

After installing the monitor, adjust the angle as follows.

## Basic Adjustment

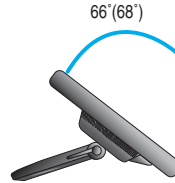
1. Adjust the angle of the panel as follows.

**How to adjust the angle of the panel**

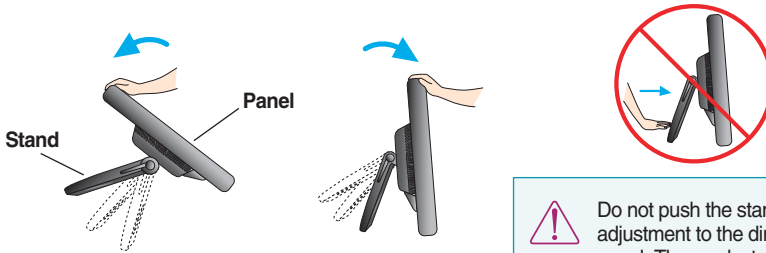
■ Tilt Range :

17MB15T : 15° to 66°

19MB15T : 15° to 68°

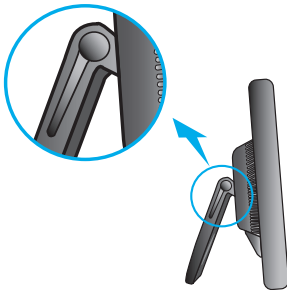


■ Push back the panel to the end, and use from the point that it automatically returns.

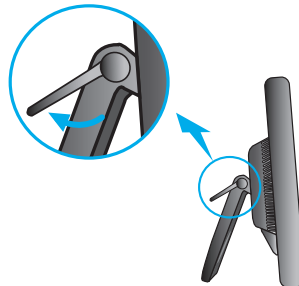


Do not push the stand with basic adjustment to the direction of the panel. The product may fall down to hurt people, or cause product disorder or screen damage.

2. After adjusting the angle of the panel for convenience, lock with the locking handle to prevent the product from moving.



The state which the stand locking handle is released



The state which the stand locking handle is locked



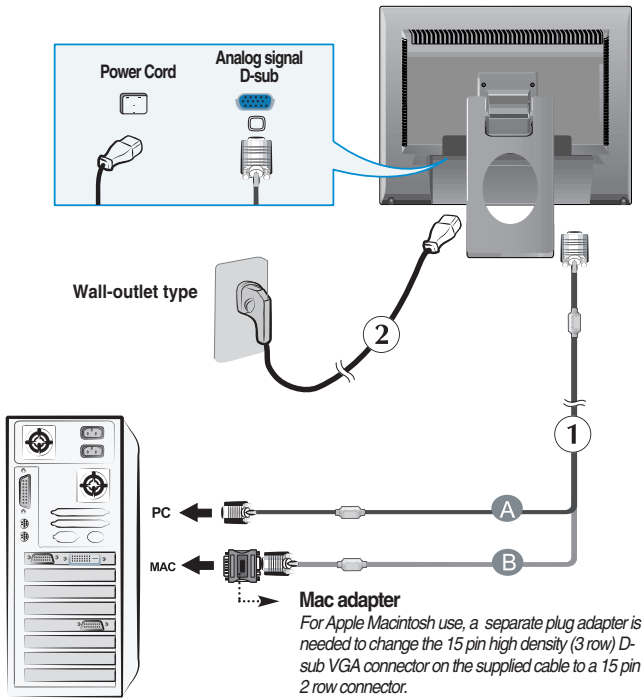
## Using the Computer


1. Make sure to turn off the computer and product. Connect the cable as below sketch map form ① to ②.

- A Connect D-sub Cable (PC)
- B Connect D-sub Cable (Mac)

### NOTE

- This is a simplified representation of the rear view.
- This rear view represents a general model; your display may differ from the view as shown.



2. Press  button on the front switch panel to turn the power on. When monitor power is turned on, the 'Self Image Setting Function' is executed automatically.



### NOTE

- **'Self Image Setting Function'?** This function provides the user with optimal display settings. When the user connects the monitor for the first time, this function automatically adjusts the display to optimal settings for individual input signals.
- **'AUTO/SET' Function?** When you encounter problems such as blurry screen, blurred letters, screen flicker or tilted screen while using the device or after changing screen resolution, press the **AUTO/SET** function button to improve resolution.

## To Use Touch Screen

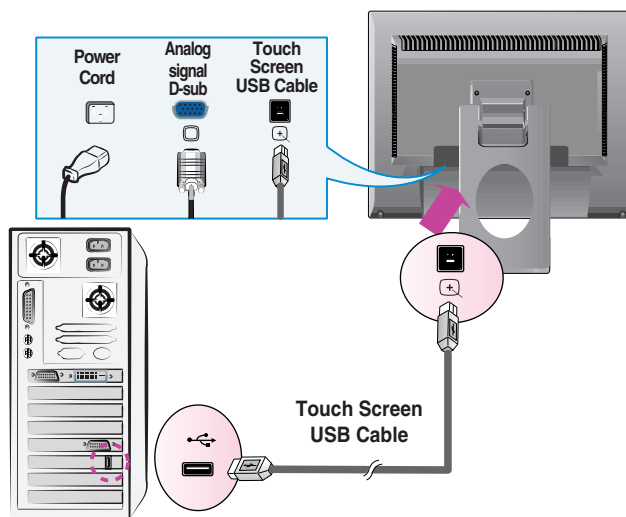
- 1) Connect the USB cable for the touch screen as shown below.
- 2) Execute the touch screen calibration.
- 3) Set "Double Click" function.
- 4) For details, refer to the touch screen user's manual.

\* LG Touch Screen Monitor supports the following Microsoft Windows operating systems: Windows XP, Windows VISTA(32bit, 64bit), Windows 7(32bit, 64bit)

### NOTE

- When you lose user's manual CD or want to update the program, please refer to <http://www.lg.com>.

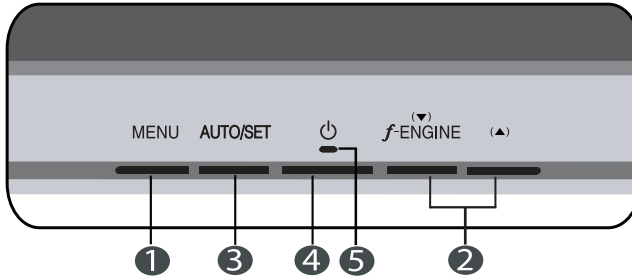
### <USB cable for the touch screen >





### NOTE

- Your purchased product and its accessories may look different from the items illustrated in this manual.

## Front Panel Controls



Control	Function
<b>1</b> MENU Button	Use this button to enter or exit from the On Screen Display.
 	<b>OSD LOCKED/UNLOCKED</b> This function allows you to lock the current control settings, so that these settings are not inadvertently changed. To lock the OSD settings, press and hold the <b>MENU button</b> for several seconds. The message " <b>OSD LOCKED</b> " appears. You can unlock the OSD settings at any time by pushing the <b>MENU button</b> for several seconds. The message " <b>OSD UNLOCKED</b> " appears.

Control	Function
<p><b>2</b> ▲ ▼ <b>Buttons</b></p> <hr/> <p><i>f</i>•ENGINE</p>	<p>Use these buttons to select or adjust functions in the On Screen Display.</p> <hr/> <p>For more information, refer to page A18.</p> <div data-bbox="521 338 740 442" style="text-align: center;"> </div>
<p><b>3</b> <b>AUTO/SET Button</b></p> <div data-bbox="203 766 422 849" style="text-align: center;"> </div>	<p>Use this button to select an icon in the On Screen Display.</p> <hr/> <p><b>AUTO IMAGE ADJUSTMENT</b>            When adjusting your display settings, always press the <b>AUTO/SET</b> button prior to entering the On Screen Display(OSD). This will automatically adjust your display image to the ideal settings for the current screen resolution size (display mode).</p> <p>The best display mode is:            17MB15T: 1280 x 1024            19MB15T: 1280 x 1024</p>
<p><b>4</b> <b>Power Button</b></p>	<p>Use this button to turn the display on or off.</p>
<p><b>5</b> <b>Power Indicator</b></p>	<p>This Indicator lights up as blue when the display is operating normally(On Mode). If the display is in Sleep Mode (Energy Saving), this indicator changes to flicker.</p>

## Screen Adjustment

Making adjustments to the image size, position and operating parameters of the display is quick and easy with the On Screen Display Control system. A short example is given below to familiarize you with the use of the controls. The following section is an outline of the available adjustments and selections you can make using the OSD.

### NOTE

- Allow the display to stabilize for at least 30 minutes before making image adjustments.

To make adjustments in the On Screen Display, follow these steps:

**MENU → ▼ ▲ → AUTO/SET → ▼ ▲ → MENU**

- 1** Press the MENU Button, then the main menu of the OSD appears.
- 2** To access a control, use the ▼ or ▲ Buttons. When the icon you want becomes highlighted, press the AUTO/SET Button.
- 3** Use the ▼ or ▲ Buttons to adjust the image to the desired level. Use the AUTO/SET Button to select other sub-menu items.
- 4** Push the MENU Button once to return to the main menu to select another function. Push the MENU Button twice to exit from the OSD.

# On Screen Display(OSD) Selection and Adjustment

The following table indicates all the On Screen Display control, adjustment, and setting menus.

Main menu	Sub-menu		A	Reference
<b>PICTURE</b>	BRIGHTNESS		●	To adjust the brightness, contrast and gamma of the screen
	CONTRAST		●	
	GAMMA		●	
<b>COLOR</b>	PRESET	sRGB	●	To customize the color of the screen
		6500K	●	
		9300K	●	
	RED		●	
	GREEN		●	
	BLUE		●	
<b>TRACKING</b>	HORIZONTAL		●	To adjust the position of the screen
	VERTICAL		●	
	CLOCK		●	To improve the clarity and stability of the screen
	PHASE		●	
	SHARPNESS		●	
<b>SETUP</b>	LANGUAGE		●	To customize the screen status for a user's operating environment
	OSD POSITION	HORIZONTAL	●	
		VERTICAL	●	
	WHITE BALANCE		●	
	POWER INDICATOR		●	
	FACTORY RESET		●	
<b>F-ENGINE</b>	MOVIE		●	To select or customize desired image settings
	INTERNET		●	
	USER		●	
	NORMAL		●	
	DEMO		●	
● : Adjustable A : Analog Input (D-sub)				

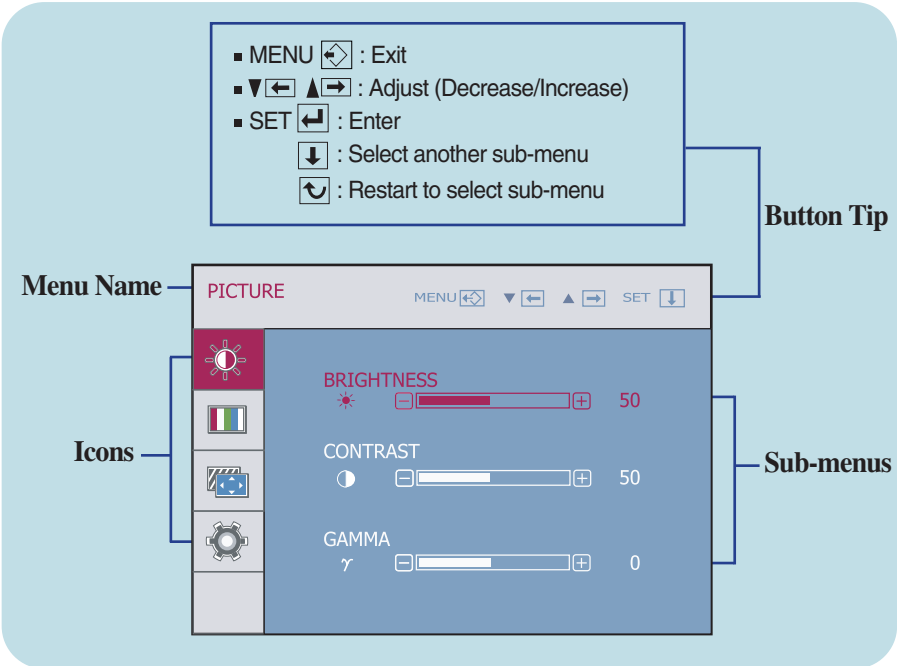
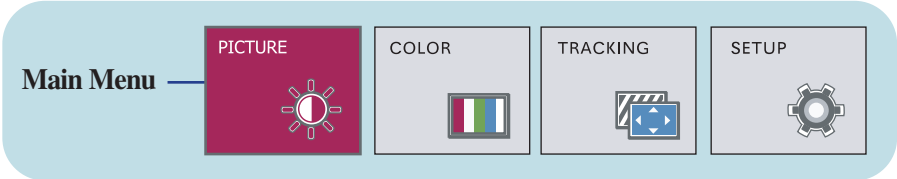
## NOTE

- The order of icons may differ depending on the model (A13 to A18).



# On Screen Display(OSD) Selection and Adjustment

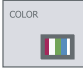
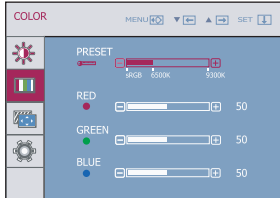
You were introduced to the procedure of selecting and adjusting an item using the OSD system. Listed below are the icons, icon names, and icon descriptions of the all items shown on the Menu.

Press the MENU Button, then the main menu of the OSD appears.

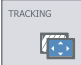
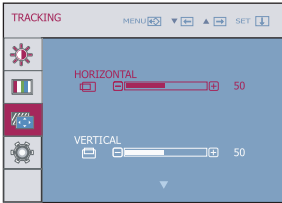
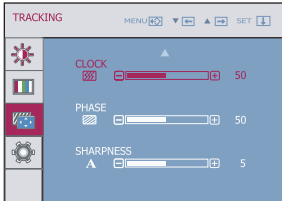


**NOTE**  
■ OSD (On Screen Display) menu languages on the monitor may differ from the manual.

Main menu	Sub menu	Description
	<b>PICTURE</b>	
	<b>BRIGHTNESS</b> <b>CONTRAST</b> <b>GAMMA</b>	To adjust the brightness of the screen. To adjust the contrast of the screen. Set your own gamma value. : -50/0/50 On the monitor, high gamma values display whitish images and low gamma values display blackish images.
	<ul style="list-style-type: none"><li>■ <b>MENU</b> : Exit</li><li>■ ▼ : Decrease</li><li>■ ▲ : Increase</li><li>■ <b>SET</b> : Select another sub-menu</li></ul>	

	<b>COLOR</b>	
	<b>PRESET</b> <b>RED</b> <b>GREEN</b> <b>BLUE</b>	• sRGB: Set the screen color to fit the sRGB standard color specification. • 6500K: Slightly reddish white. • 9300K: Slightly bluish white. Set your own red color levels. Set your own green color levels. Set your own blue color levels.
	<ul style="list-style-type: none"><li>■ <b>MENU</b> : Exit</li><li>■ ▼ : Decrease</li><li>■ ▲ : Increase</li><li>■ <b>SET</b> : Select another sub-menu</li></ul>	



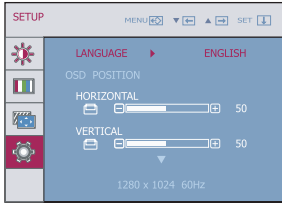
Main menu	Sub menu	Description
 <p><b>TRACKING</b></p>		
	<p><b>HORIZONTAL</b></p> <p><b>VERTICAL</b></p>	<p>To move image left and right.</p> <p>To move image up and down.</p>
	<p><b>CLOCK</b></p> <p><b>PHASE</b></p> <p><b>SHARPNESS</b></p>	<p>To minimize any vertical bars or stripes visible on the screen background. The horizontal screen size will also change.</p> <p>To adjust the focus of the display. This item allows you to remove any horizontal noise and clear or sharpen the image of characters.</p> <p>To adjust the clearness of the screen.</p>
<ul style="list-style-type: none"> <li>■ <b>MENU</b> : Exit</li> <li>■ ▼ : Decrease</li> <li>■ ▲ : Increase</li> <li>■ <b>SET</b> : Select another sub-menu</li> </ul>		

# On Screen Display(OSD) Selection and Adjustment

Main menu	Sub menu	Description
-----------	----------	-------------

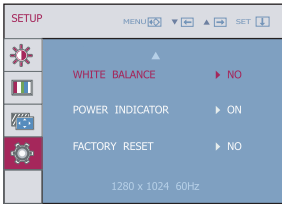


## SETUP



**LANGUAGE** To choose the language in which the control names are displayed.

**OSD POSITION** To adjust position of the OSD window on the screen.



**WHITE BALANCE** If the output of the video card is different from the required specifications, the color level may deteriorate due to video signal distortion. Using this function, the signal level is adjusted to fit into the standard output level of the video card in order to provide the optimal image. Activate this function when white and black colors are present in the screen.

- **MENU** : Exit
- ▼ : Decrease
- ▲ : Increase
- **SET** : Select another sub-menu

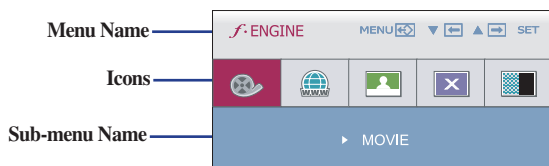
**POWER INDICATOR** Use this function to set the power indicator on the front side of the monitor to **ON** or **OFF**.  
If you set **OFF**, it will go off.  
If you set **ON** at any time, the power indicator will automatically be turned on.

**FACTORY RESET** Restore all factory default settings except "**LANGUAGE.**"  
Press the ▼ , ▲ buttons to reset immediately.

If this does not improve the screen image, restore the factory default settings.  
If necessary, perform the white balance function again.

# On Screen Display(OSD) Selection and Adjustment

Select the **ENGINE** button at the bottom of the monitor, then the OSD screen will appear.



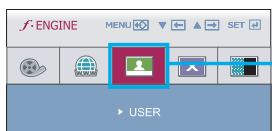
Main menu	Sub menu	Description
-----------	----------	-------------



This feature lets you easily select the best desired image condition optimized to the environment (ambient illumination, image types etc).

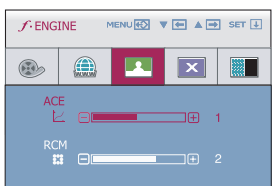
**MOVIE:** For animation images in videos or movies

**INTERNET:** For text images (Word processing etc.)



**USER** The user can directly adjust ACE and RCM. You can save or restore the adjusted value even when using a different environment.

To adjust the USER sub-menu function, press the **AUTO/SET** Button.



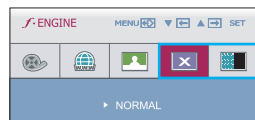
• **ACE** (Adaptive Clarity Enhancer): Selects the clarity mode.

- 0 Not applied
- 1 Weak clarity and luminosity contrast.
- 2 Strong clarity and luminosity contrast.

• **RCM** (Real Color Management): Selects the color mode.

- 0 Not applied
- 1 Green enhance
- 2 Flesh tone
- 3 Color Enhance

- **MENU** : Exit
- **▼** : Decrease
- **▲** : Increase
- **AUTO/SET** : Select another sub-menu



**NORMAL** This is under normal operating conditions.

**DEMO** This is just for advertising to customer in the shops. It's setting is same with Movie mode and screen is divided by half.

Check the following before calling for service.

No image appears	
<ul style="list-style-type: none"><li>● <b>Is the power cord of the display connected?</b></li></ul>	<ul style="list-style-type: none"><li>• Check and see if the power cord is connected properly to the power outlet.</li></ul>
<ul style="list-style-type: none"><li>● <b>Is the power indicator light on?</b></li></ul>	<ul style="list-style-type: none"><li>• Press the Power button.</li></ul>
<ul style="list-style-type: none"><li>● <b>Is the power on and the power indicator blue or green?</b></li></ul>	<ul style="list-style-type: none"><li>• Adjust the brightness and the contrast.</li></ul>
<ul style="list-style-type: none"><li>● <b>Is the power indicator flickering?</b></li></ul>	<ul style="list-style-type: none"><li>• If the display is in power saving mode, try moving the mouse or pressing any key on the keyboard to bring up the screen.</li><li>• Try to turn on the PC.</li></ul>
<ul style="list-style-type: none"><li>● <b>Do you see an "OUT OF RANGE" message on the screen?</b></li></ul>	<ul style="list-style-type: none"><li>• This message appears when the signal from the PC (video card) is out of horizontal or vertical frequency range of the display. See the 'Specifications' section of this manual and configure your display again.</li></ul>
<ul style="list-style-type: none"><li>● <b>Do you see a "CHECK SIGNAL CABLE" message on the screen?</b></li></ul>	<ul style="list-style-type: none"><li>• This message appears when the signal cable between your PC and your display is not connected. Check the signal cable and try again.</li></ul>

Do you see a "OSD LOCKED" message on the screen?	
<ul style="list-style-type: none"><li>● <b>Do you see "OSD LOCKED" when you push MENU button?</b></li></ul>	<ul style="list-style-type: none"><li>• You can secure the current control settings, so that they cannot be inadvertently changed. You can unlock the OSD controls at any time by pushing the <b>MENU</b> button for several seconds: the message "<b>OSD UNLOCKED</b>" will appear.</li></ul>

## Display image is incorrect

- |   |   |
|---|---|
| <ul style="list-style-type: none"><li>● <b>Display Position is incorrect.</b></li></ul>   | <ul style="list-style-type: none"><li>• Press the <b>AUTO/SET</b> button to automatically adjust your display image to the ideal setting. If the results are unsatisfactory, adjust the image position using the <b>H position and V position</b> icon in the on screen display.</li></ul>  |
| <ul style="list-style-type: none"><li>● <b>On the screen background, vertical bars or stripes are visible.</b></li></ul>                      | <ul style="list-style-type: none"><li>• Press the <b>AUTO/SET</b> button to automatically adjust your display image to the ideal setting. If the results are unsatisfactory, decrease the vertical bars or stripes using the <b>CLOCK</b> icon in the on screen display.</li></ul>  |
| <ul style="list-style-type: none"><li>● <b>Any horizontal noise appearing in any image or characters are not clearly portrayed.</b></li></ul> | <ul style="list-style-type: none"><li>• Press the <b>AUTO/SET</b> button to automatically adjust your display image to the ideal setting. If the results are unsatisfactory, decrease the horizontal bars using the <b>PHASE</b> icon in the on screen display.</li><li>• Check <b>Control Panel --&gt; Display --&gt; Settings</b> and adjust the display to the recommended resolution or adjust the display image to the ideal setting. Set the color setting higher than 24 bits (Color Quality).</li></ul> |

### Important

- Check **Control Panel --> Display --> Settings** and see if the frequency or the resolution were changed. If yes, readjust the video card to the recommend resolution.
- The setting method can differ by computer and O/S (Operation System), and resolution mentioned above may not be supported by the video card performance. In this case, please ask to the computer or the video card manufacturer.

## Display image is incorrect

- **The screen color is mono or abnormal.**

- Check if the signal cable is properly connected and use a screwdriver to fasten if necessary.
- Make sure the video card is properly inserted in the slot.
- Set the color setting higher than 24 bits (Color Quality) at **Control Panel --> Settings**.

- **The screen blinks.**

- Check if the screen is set to interlace mode and if yes, change it to the recommend resolution.

<b>Display</b>	43.27 cm (17.0 inch) Flat Panel Active matrix-TFT LCD Anti-Glare coating Visible diagonal size: 43.27 cm 0.264 mm x 0.264 mm (Pixel Pitch)		
<b>Sync Input</b>	Horizontal Freq.	30 kHz to 83 kHz (Automatic)	
	Vertical Freq.	56 Hz to 75 Hz (Automatic)	
	Input Form	Separate TTL SOG (Sync On Green)	
<b>Video Input</b>	Signal Input	15 pin D-sub Connector	
	Input Form	RGB Analog (0.7 Vp-p/ 75 ohm)	
<b>Resolution</b>	Max	VESA 1280 x 1024 @75 Hz	
	Recommend	VESA 1280 x 1024 @60 Hz	
<b>Plug &amp; Play</b>	DDC 2B		
<b>Power Consumption</b>	On Mode	: 16 W (Typ.)	
	Sleep Mode	≤ 0.5 W	
	Off Mode	≤ 0.5 W	
<b>Dimensions &amp; Weight</b>	With Stand		Without Stand
	Width	36.96 cm (14.55 inch)	36.96 cm (14.55 inch)
	Height	31.5 cm (12.40 inch)	31.5 cm (12.40 inch)
	Depth	9.46 cm (3.72 inch)	6.24 cm (2.46 inch)
	Net	3.90 kg ( 8.60 lb)	
<b>Tilt Range</b>	15° to 66°		
<b>Power Input</b>	AC 100-240 V~ 50/60 Hz 0.8 A		
<b>Environmental Conditions</b>	Operating Conditions		
	Temperature	10 °C to 35 °C	
	Humidity	10 % to 80 % non-Condensing	
	Storage Conditions		
	Temperature	-20 °C to 60 °C	
	Humidity	5 % to 90 % non-Condensing	
<b>Stand Base</b>	Attached ( O ), Detached ( )		
<b>Power cord</b>	Wall-outlet type		

**NOTE**

- Information in this document is subject to change without notice.

<b>Display</b>	48.19 cm (19.0 inch) Flat Panel Active matrix-TFT LCD Anti-Glare coating Visible diagonal size: 48.19 cm 0.294 mm x 0.294 mm (Pixel Pitch)		
<b>Sync Input</b>	Horizontal Freq.	30 kHz to 83 kHz (Automatic)	
	Vertical Freq.	56 Hz to 75 Hz (Automatic)	
	Input Form	Separate TTL SOG (Sync On Green)	
<b>Video Input</b>	Signal Input	15 pin D-sub Connector	
	Input Form	RGB Analog (0.7 Vp-p/ 75 ohm)	
<b>Resolution</b>	Max	VESA 1280 x 1024 @75 Hz	
	Recommend	VESA 1280 x 1024 @60 Hz	
<b>Plug &amp; Play</b>	DDC 2B		
<b>Power Consumption</b>	On Mode	: 17.5 W (Typ.)	
	Sleep Mode	≤ 0.5 W	
	Off Mode	≤ 0.5 W	
<b>Dimensions &amp; Weight</b>	With Stand		Without Stand
	Width	40.63 cm (16.00 inch)	40.63 cm (16.00 inch)
	Height	34.45 cm (13.56 inch)	34.45 cm (13.56 inch)
	Depth	9.4 cm (3.70 inch)	6.17 cm (2.43 inch)
	Net	4.70 kg (10.36 lb)	
<b>Tilt Range</b>	15° to 68°		
<b>Power Input</b>	AC 100-240 V~ 50/60 Hz 0.8 A		
<b>Environmental Conditions</b>	Operating Conditions		
	Temperature	10 °C to 35 °C	
	Humidity	10 % to 80 % non-Condensing	
	Storage Conditions		
	Temperature	-20 °C to 60 °C	
	Humidity	5 % to 90 % non-Condensing	
<b>Stand Base</b>	Attached ( O ), Detached ( )		
<b>Power cord</b>	Wall-outlet type		

**NOTE**

- Information in this document is subject to change without notice.



## Preset Modes (Resolution)

Display Modes (Resolution)		Horizontal Freq. (kHz)	Vertical Freq. (Hz)
1	640 x 350	31.469	70
2	720 x 400	31.468	70
3	640 x 480	31.469	60
4	640 x 480	37.500	75
5	800 x 600	37.879	60
6	800 x 600	46.875	75
7	832 x 624	49.725	75
8	1024 x 768	48.363	60
9	1024 x 768	60.123	75
10	1152 x 870	68.681	75
11	1152 x 900	61.805	65
*12	1280 x 1024	63.981	60
13	1280 x 1024	79.976	75

\* Recommend Mode

## Indicator

MODE	LED Color
On Mode	Blue
Sleep Mode	Blue Color Blinking
Off Mode	Off

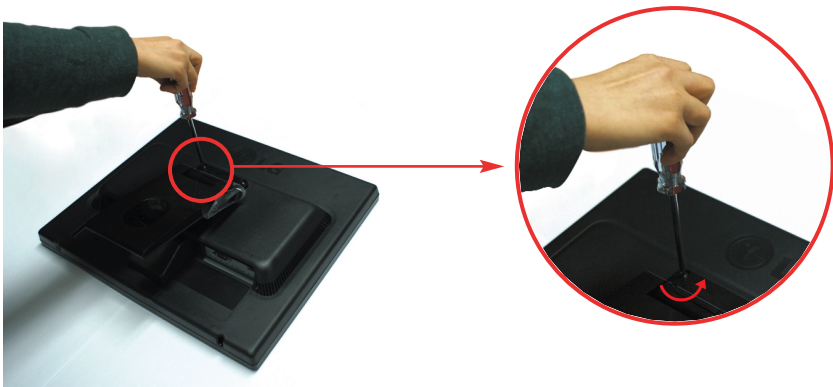
# Installing the Wall mount plate

**This monitor satisfies the specifications of the Wall mount plate or the interchange device.**

1. Place the monitor with its front facing downward on a soft cloth.



2. Separate the head and the stand with the use of a screwdriver.



# Installing the Wall mount plate

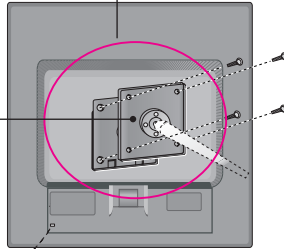
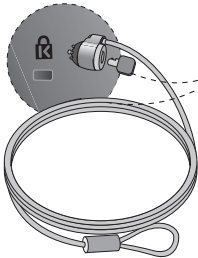
## 3. Install the Wall mount plate.

### Wall mount plate(Separate purchase)

This is stand-type or wall mount type and is connectable with Wall mount plate.

Please refer to the installation guide for more details, which is provided when Wall mount plate is purchased.

Wall Mount pad



### Kensington Security Slot

Connected to a locking cable that can be purchased separately at most computer stores.

### <Screw Mounting Interface Dimension>

Hole spacing : 75 mm x 75 mm

### NOTE

- VESA compatible only with respect to screw mounting interface dimensions and mounting screw specifications
- Please use VESA standard as below.
  - \* 784.8 mm and under (30.9 inch)
    - Wall Mount Pad Thickness : 2.6 mm
    - Screw :  $\phi$  4.0 mm x Pitch 0.7 mm x Length 10 mm
  - \* 787.4 mm and above (31.0 inch)
    - Please use VESA standard wall mount pad and screws.



**Declaration of Conformity**

Trade Name: LG

Model : 17MB15TO  
19MB15TO

Responsible Party: LG Electronics Inc.

Address : 1000 Sylvan Ave. Englewood Cliffs  
NJ 07632 U.S.A

TEL: 201-266-2534

\*above information is only for USA FCC Regulatory

Make sure to read the Important Precautions before using the product.

Keep the User's Guide(CD) in an accessible place for future reference.

The model and serial number of the SET is located on the back and one side of the SET. Record it below should you ever need service.

MODEL \_\_\_\_\_

SERIAL \_\_\_\_\_