

WQ-TEMP with WQ Sensors Software

Smart Sensors
Powerful Software



TABLE OF CONTENTS

1	<i>Sensor Operation</i>	3
1.1	Temperature Only Sensors.....	3
1.1.1	WQ-TEMP – Temperature Sensor.....	3
2	<i>Software Operation</i>	4
2.1	Working with Data.....	4
2.2	Data Validation and Review	7
2.3	Changing Software Settings.....	9
2.4	Science Library	11
2.5	Help and Support	12
2.6	Working with Project Files	13
	<i>Appendix</i>	15
	Appendix A: Material Safety Data Sheets	15
	Appendix B: Warranty and Service	15
	Appendix C: Computer Requirements.....	16
	Appendix D: Step-by-Step Driver Installation	16

What is a WQSensor?

WQSensors offer the latest in smart sensor technology with direct computer interface. An integral USB connector offers a simple, hassle-free connection without meters, batteries, or power supplies - displaying the data in real-time directly onto the PC. Common water quality parameters include: temperature, dissolved oxygen, pH, ORP, NO₃, NH₄, and Cl.

Every sensor ships with WQSensor Software, which offers a simple graphical interface to the smart sensors. The software includes the popular NexSens SCIENCE LIBRARY with an interactive periodic table, unit converter, and other useful science utilities. Download a FREE copy today!

Software Installation

WQSensor Software is distributed on CD-ROM. The setup program starts automatically when the CD is inserted. If the program does not load automatically, you can manually start the setup process by running Setup.exe from the CD ROM drive. We suggest that you accept the default options presented by the WQSensor Software setup program.

Uninstalling WQSensors Software

If you need to uninstall WQSensor Software, click **Settings** in the **Start Menu**. Select **Control Panel**, followed by **Add / Remove Programs**. Follow the step-by-step instructions to remove WQSensor Software and all associated files.

1 Sensor Operation

1.1 Temperature Only Sensors

1.1.1 WQ-TEMP – Temperature Sensor

WQSensor probes come ready to go and with most of the accessories you will need.

WQ-TEMP Sensor

Constructed of chemically resistant stainless steel and Santoprene elastomer, this WQSensor offers precision measurements over a broad temperature range. An internally stored unique ID and GLP file ensures quality data and tracks calibration and sensor status.

Temperature Package Includes:

- WQ-TEMP: Temperature sensor with 6 feet of cable and integral USB connector
- WQSensor Software & Knowledge Library CD
- WQSensor Quick Start Guide



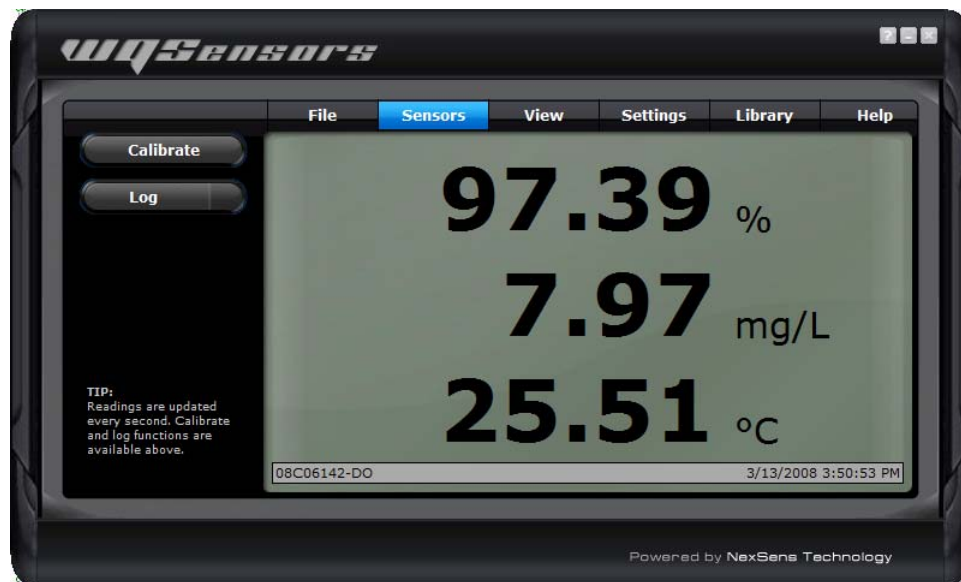
WQ-TEMP Sensor Specifications

Construction	Construction: Santoprene®, PVC, 316 stainless steel
Temperature Range	0 to 50°C
Accuracy	± 0.2°C
Response Time	30 seconds full range swing
Temperature Element	Thermistor
Size:	Cable Length 6 ft.

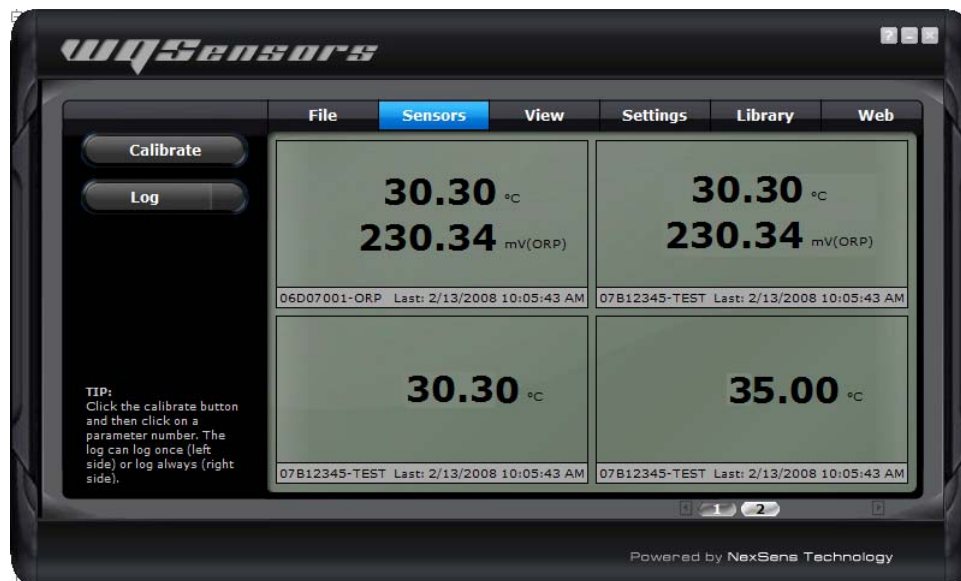
2 Software Operation

2.1 Working with Data

After running WQSensors software and connecting a WQSensor, real time data can be viewed in the **Sensors** menu. When a single sensor is connected it will be displayed as shown. The serial number of the sensor, as well as the time of last obtained reading, is displayed on the bottom of the screen.



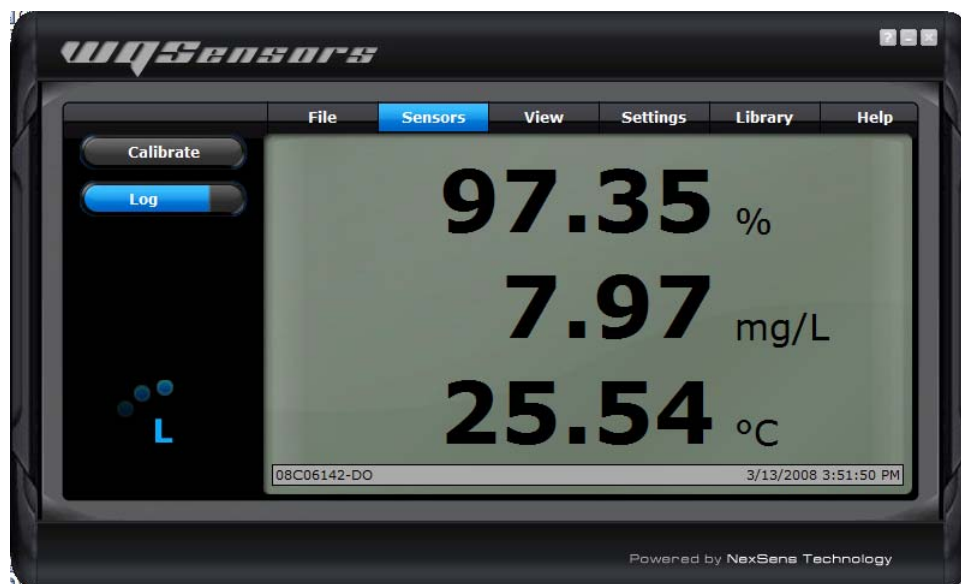
If multiple sensors are connected, they will be displayed in a tabular format as shown. Numerical buttons on the bottom of the screen allow scrolling through each panel of four sensors.



Logging Data

Data can be logged either as single measurements or as a stream of measurements over user-specified time intervals. This interval can be specified by clicking the **Interval** button in the **Settings** menu. Logged data can be viewed by clicking the **Report** button in the **View** menu.

To log a single data point, click on the left hand side of the **Log** button. The left side of the button will turn blue and a short animation with the letter **L** will display on the bottom left hand corner of the screen.



To start logging continuous measurements at the user defined interval, click on the right hand side of the **Log** button. The entire button will turn blue and at the log interval, a short animation with the letter **L** will display on the bottom left hand corner of the screen.



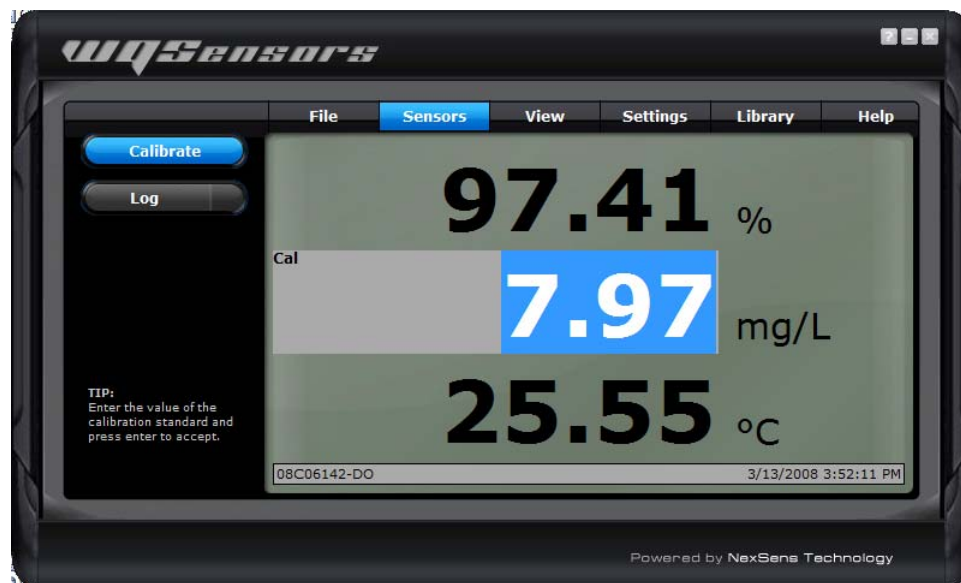
Calibrating Sensor Readings

To calibrate Sensor Readings:

1. Click on the **Calibrate** button
2. Select the parameter reading to calibrate as shown below
3. Enter the calibrated value
4. Click the **Calibrate** button again to complete the change

A short animation with the letter **C** will display on the bottom left hand corner of the screen. Temperature and mV values cannot be calibrated (except for calibration of ORP). This calibration is stored on the sensor, which means that the sensor can be calibrated on one computer and still returned calibrated results no matter which other computers it is used on.

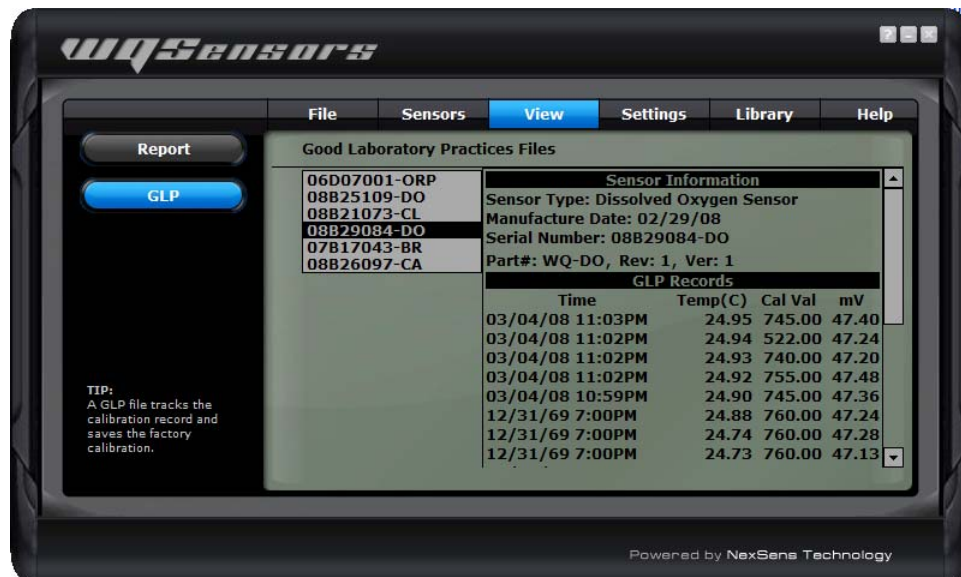
Refer to the calibration guidelines in the sensor sections earlier in this manual for information on when and what values to calibrate with.



2.2 Data Validation and Review

Good Laboratory Practice Files

WQSensors software automatically records every calibration to a Good Laboratory Practice (GLP) file. The GLP file will include the time, data, sample readings, and diagnostic data for each calibration. This file is stored on the sensor and will carry over from PC to PC.

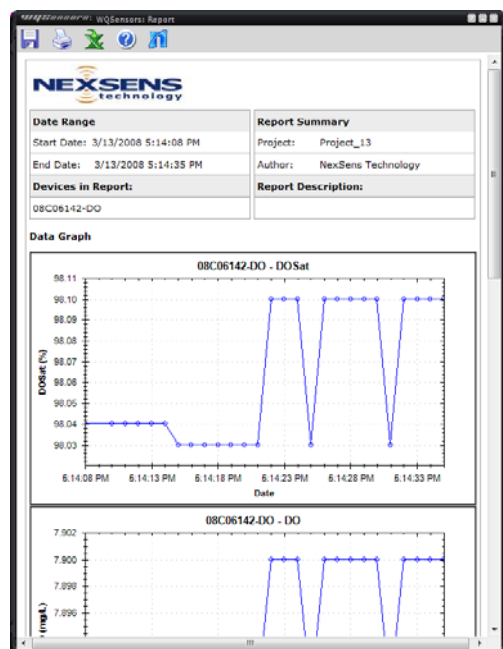


Data Reports

Data is stored inside WQSensors software project files and can be viewed in graphical, statistical, and tabular formats. To view this data click the **View** button, then click the **Report** button. Select the desired report options and then click **Generate**.



From the report tool bar data can be saved, printed, or exported to Microsoft Excel ©.



Sample	Date/Time	08C06142-DO		
		DOSat	DO	Temperature
		%	mg/L	C
1	3/13/2008 5:14:08 PM	98.04	7.89	26.42
2	3/13/2008 5:14:10 PM	98.04	7.89	26.42
3	3/13/2008 5:14:11 PM	98.04	7.89	26.42
4	3/13/2008 5:14:12 PM	98.04	7.89	26.42
5	3/13/2008 5:14:13 PM	98.04	7.89	26.43
6	3/13/2008 5:14:14 PM	98.04	7.89	26.43
7	3/13/2008 5:14:15 PM	98.03	7.89	26.43
8	3/13/2008 5:14:16 PM	98.03	7.89	26.43
9	3/13/2008 5:14:17 PM	98.03	7.89	26.43
10	3/13/2008 5:14:18 PM	98.03	7.89	26.43
11	3/13/2008 5:14:19 PM	98.03	7.89	26.43
12	3/13/2008 5:14:20 PM	98.03	7.89	26.43
13	3/13/2008 5:14:21 PM	98.03	7.89	26.43
14	3/13/2008 5:14:22 PM	98.1	7.9	26.43
15	3/13/2008 5:14:23 PM	98.1	7.9	26.43
16	3/13/2008 5:14:24 PM	98.1	7.9	26.43
17	3/13/2008 5:14:25 PM	98.03	7.89	26.43
18	3/13/2008 5:14:26 PM	98.1	7.9	26.43
19	3/13/2008 5:14:27 PM	98.1	7.9	26.43
20	3/13/2008 5:14:28 PM	98.1	7.9	26.43
21	3/13/2008 5:14:29 PM	98.1	7.9	26.43
22	3/13/2008 5:14:30 PM	98.1	7.9	26.43
23	3/13/2008 5:14:31 PM	98.03	7.89	26.43
24	3/13/2008 5:14:32 PM	98.1	7.9	26.43
25	3/13/2008 5:14:33 PM	98.1	7.9	26.43
26	3/13/2008 5:14:34 PM	98.1	7.9	26.43
27	3/13/2008 5:14:35 PM	98.1	7.9	26.43
28	3/13/2008 5:14:36 PM	98.1	7.9	26.43
29	3/13/2008 5:14:37 PM	98.1	7.9	26.43
30	3/13/2008 5:14:38 PM	98.1	7.9	26.43
31	3/13/2008 5:14:39 PM	98.1	7.9	26.43

2.3 Changing Software Settings

Customizable options are available in WQSensors software in the Application Settings menu.

Show introduction animation?

This option specifies whether to display the opening animation that plays each time WQSensors software is started. Un-checking this box will disable the software from playing the animation each time.

Remember last menu location?

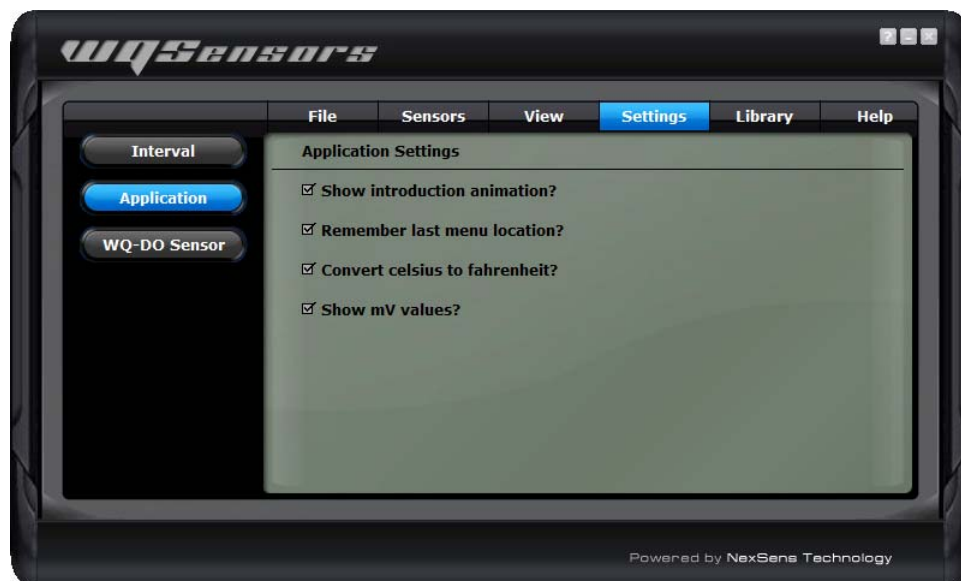
This option specifies whether the WQSensors software should reload the last menu opened each time the WQSensors software starts. Un-checking this box will make the **Sensors** menu the default page when starting WQSensors software. This feature is useful if a specific **Library** menu table or formula is used often.

Convert Celsius to Fahrenheit?

This option specifies whether to display temperature values in Celsius or Fahrenheit. Un-checking this box will display all temperature readings in degrees Fahrenheit.

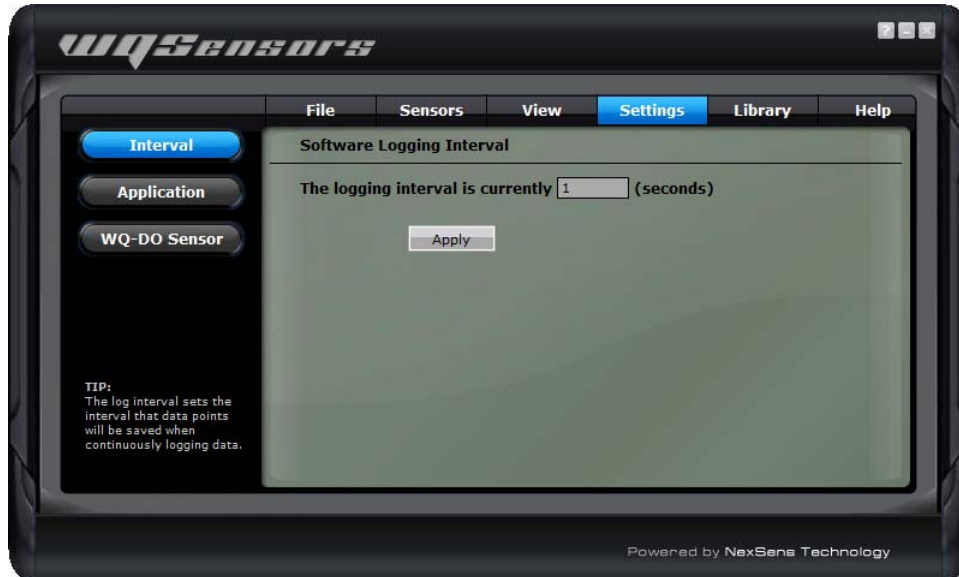
Show mV values?

This option specifies whether the **Sensors** menu should display the mV readings from the sensors. Un-checking this box will disable the display of mV values. mV readings are diagnostic information and are not required to take measurements. They are useful, however, in determining sensor performance and calibration.



Changing Log Interval

The intervals at which the sensor logs data can be changed in the Software Logging Interval menu. Clicking the **Interval** button on the **Settings** menu displays the current log interval in seconds. To change the interval, enter a new value and click **Apply**.



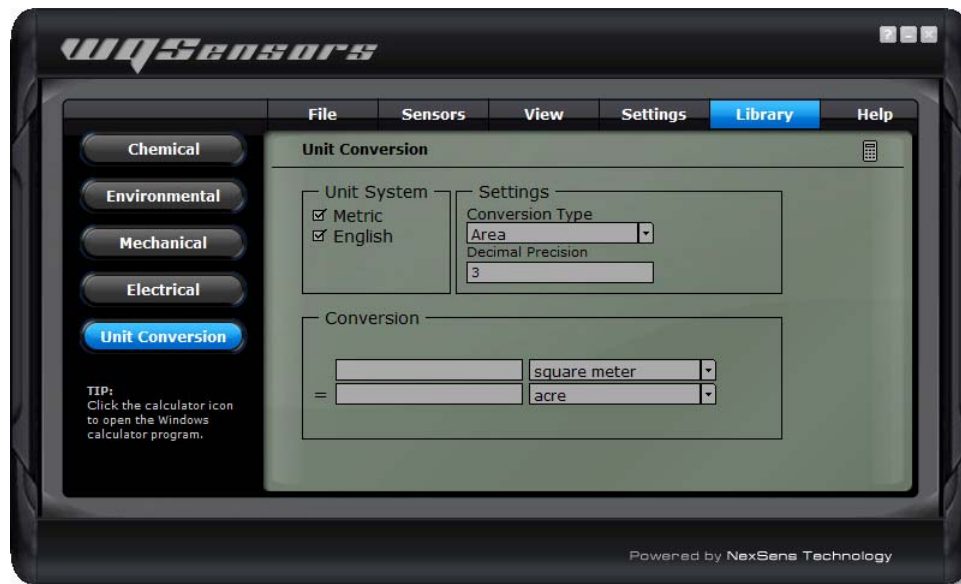
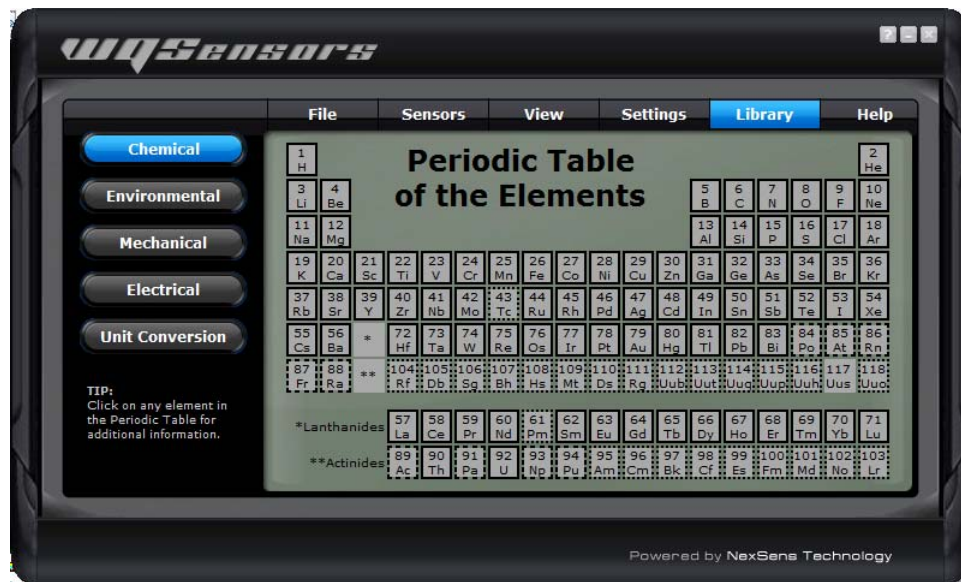
Please see the Logging Data section for starting and stopping this feature.

2.4 Science Library

The WQSensor software **Library** menu is a desktop reference for water, wastewater, and environmental professionals. It's packed with tables, calculations, and many conversions.

Features include:

- Converting units of measure
- Calculating flow over a weir
- Determining the inside diameter of PVC pipe
- Finding the ammonia tolerance level for rainbow trout
- Determining the atomic weight of bromine
- Finding the concentrations of elements in sea water
- And much more...



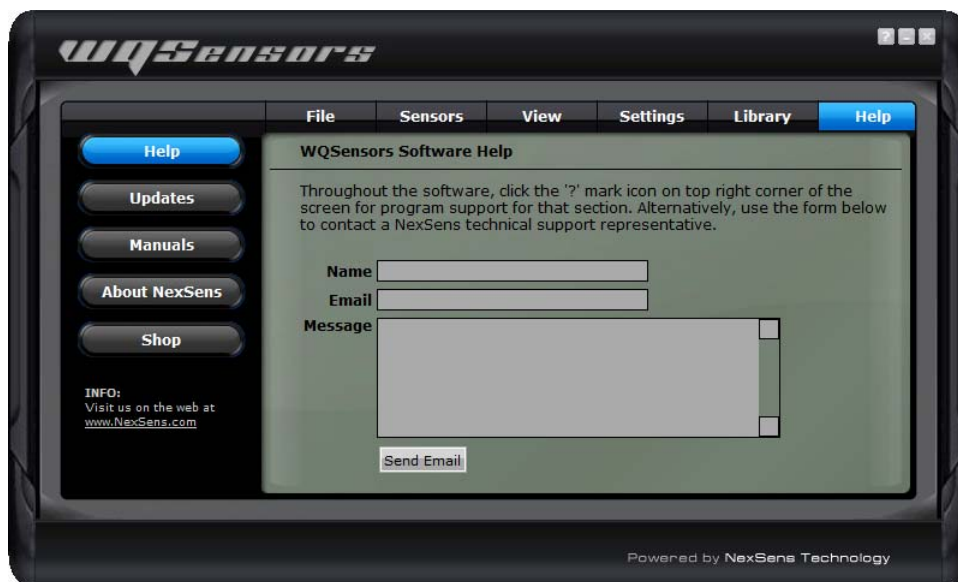
2.5 Help and Support

WQSensors software integrates the internet into part of its functionality. Software updates, technical support, and other information can be obtained in the **Help** menu.



Technical questions or comments

NexSens technical staff can be reached right inside of the program. Click on the **Help** button in the **Help** menu to send an email directly to NexSens technical support. Be sure to include a name and email address that they can contact you with. If you would prefer to be contacted by phone, include that in the message along with your phone number.



Note: An internet connection is not required to run WQSensors software.

2.6 Working with Project Files

When WQ Sensors software first runs, it defaults to **Project_1**. This is simply a default name for the default project file. Each project file contains information about every sensor that was connected to the computer while that file was open, as well as any data that was collected during that time as well.



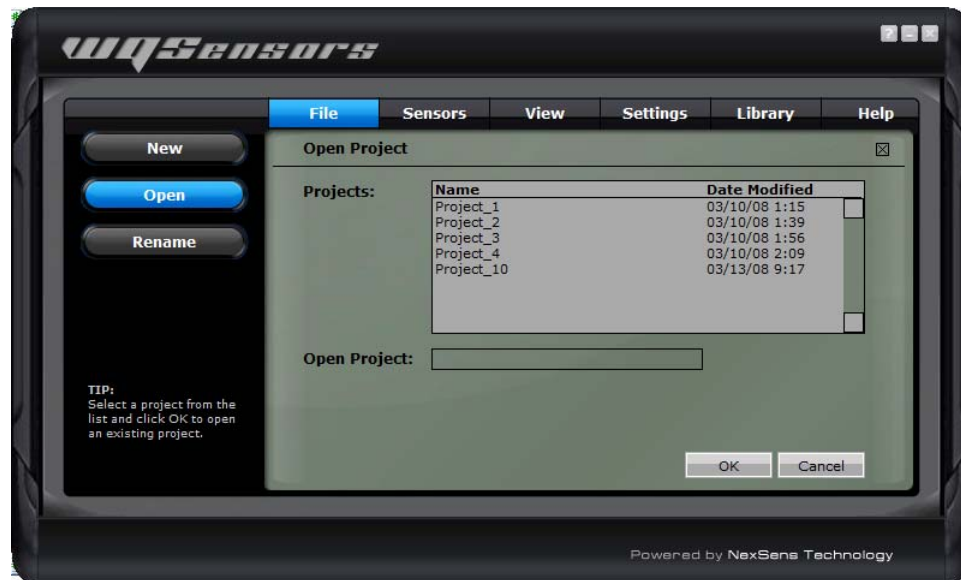
Creating new project files

To create a new project, for a specific experiment or study, click the **New** button in the **File** menu and enter a project name. Click **OK** when finished.



Open an existing project

To open a previously created project, select **Open** from the **File** menu. Select the project to open and click **OK**. WQSensors software will begin using that project file as the current project.



Renaming project files

To rename the current project, select **Rename** from the **File** menu. Enter a new name and click **OK**.

To rename projects, other than the current one, simply select **Open** and select the project to be renamed from the list of existing projects. This project can then be renamed on this tab.



Appendix

Appendix A: Material Safety Data Sheets

Material Safety Data Sheets can be found at: <http://www.nexsens.com/support/msds.htm>

Appendix B: Warranty and Service

NexSens Technology, Inc. warrants WQ Sensors against defects in materials or workmanship for a period of 6 months (extended warranties up to 2 years are available for purchase) from the date of delivery to the original customer. This warranty is limited to the replacement or repair of such defects, without charge, when the instrument is returned to NexSens Technology, Inc. Damage due to accidents, misuse, tampering, lack of reasonable care, loss of parts, failure to perform prescribed maintenance, or accidents of nature are not covered. This warranty excludes all other warranties, express or implied, and is limited to a value not exceeding the purchase price of the instrument.

Limitation of Warranty

This warranty is not applicable to any NexSens Technology, Inc. product damage or failure caused by (i) failure to install, operate or use the product in accordance with NexSens Technology, Inc. written instructions, (ii) abuse or misuse of the product, (iii) failure to maintain the product in accordance with NexSens Technology, Inc. written instructions, (iv) any improper repairs to the product, (v) use of defective or improper components or parts in servicing or repairing the product, (vi) modification of the product in any way not expressly authorized by NexSens Technology, Inc., or (vii) performance issues such as loss of slope and speed of response. Long-term sensor performance is highly dependent on proper care and storage, which is the responsibility of the end user.

Warning: NexSens Technology, Inc. products are not authorized for use as critical components in any life support system where failure of the product is likely to affect its safety or effectiveness.

Authorized U.S. Service Centers

– Corporate Headquarters –
NexSens Technology, Inc.
1415 Research Park Drive
Dayton, Ohio 45432

– Phone: (937) 426-2703
– Fax: (937) 426-1125
– E-Mail: support@nexsens.com

Appendix C: Computer Requirements

WQSensor Software requires the following minimum system configuration:

- Pentium class PC
- 64 MB RAM
- 100 MB hard drive
- 2MB video card
- CD-ROM drive for Software installation
- Adobe Flash
- Windows 2000 (SP1 or higher) or Windows XP

Appendix D: Step-by-Step Driver Installation

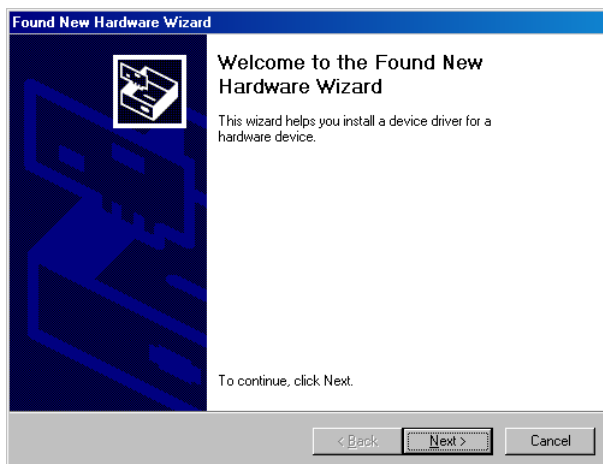
After installation of the WQSensor Software, USB communicate with the sensor will be enabled. When the adapter is plugged in for the first time, Windows will automatically recognize it and start the **Found New Hardware** wizard. See the following sections for details.

Installation for Windows 2000

When the USB adapter is plugged in for the first time, Windows will detect and start the Found New Hardware Wizard:



1. Click **Next** when the Found New Hardware Wizard dialog box appears.

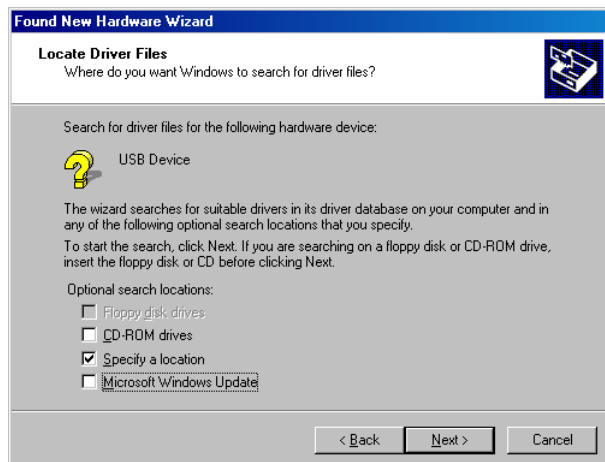


2. Check the “Search for suitable driver for my device” option. Click **Next** to continue.

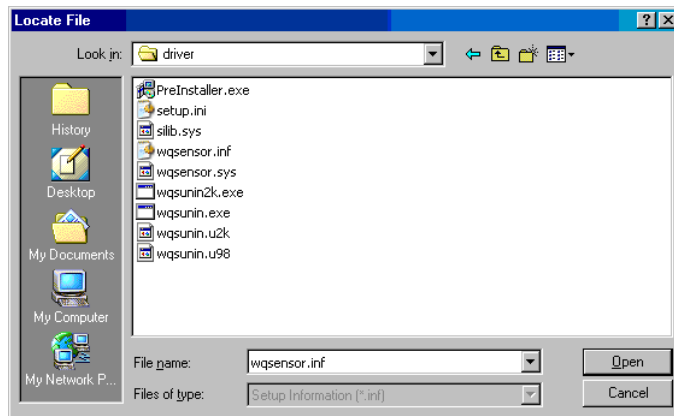


3a. If the **WQSensor installation CD** is in the CD-ROM drive, place a check mark in the “CD-Rom drives” option and click **Next**. This is the recommended method, if the WQSensor CD is available. Windows will scan the CD and automatically install the driver.

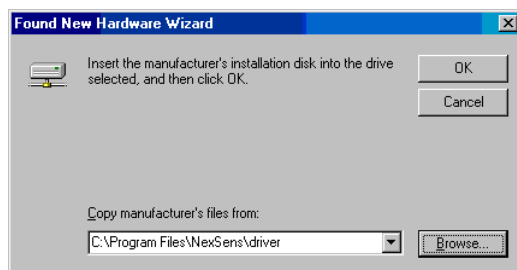
3b. If the WQSensor software is unavailable or the software has been downloaded from the internet. Check “Specify a location” and click **Next**.



Click **Browse** and go to the location of the driver. By default the driver is located in "C:\Program Files\NexSens\WQSensor\Driver\wqsensor.inf". Click **Open**.



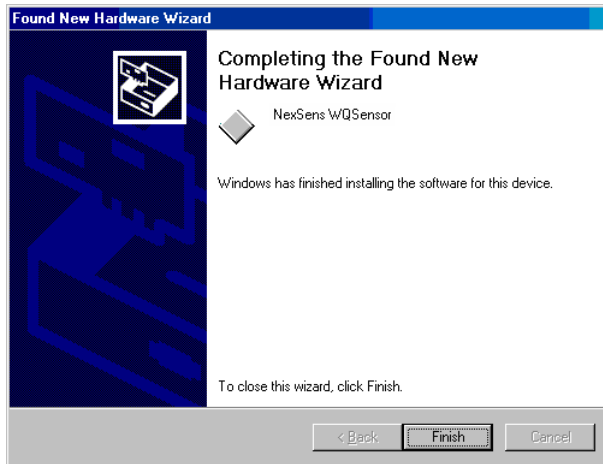
Click **OK** to continue.



4. Once Windows has successfully found the driver, click **Next**.



5. Click **Finish** in the following window. Make sure that the driver has been successfully installed.



Note: The above steps only need to be completed successfully once.

Installation for Windows XP

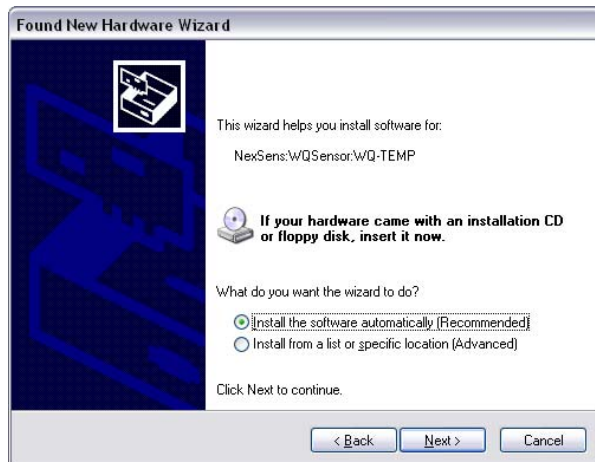
When the USB adapter is plugged in for the first time, Windows will detect and start the Found New Hardware Wizard:



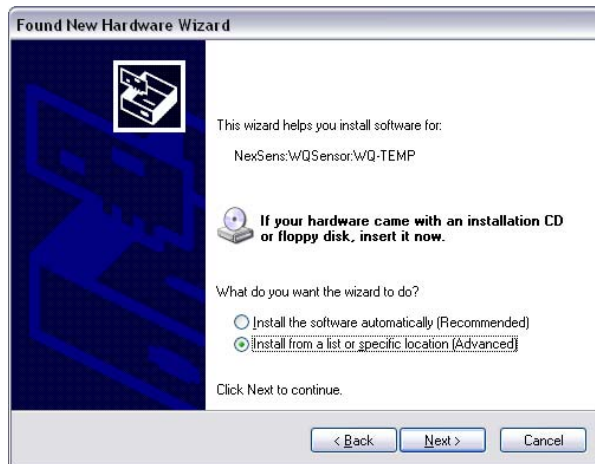
1. Select **No, not this time** and click **Next**, when the Found New Hardware Wizard appears.



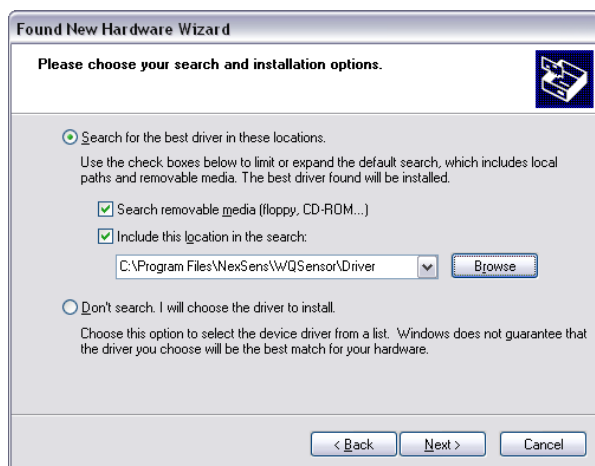
2a. If the **WQSensor installation CD** is in the CD-ROM drive then click the **Install the Software automatically** option and click **Next**. This is the recommended method, if the WQSensor CD is available. Windows will scan the CD and automatically install the driver.



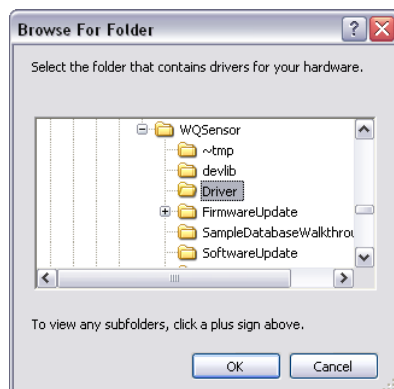
2b. If the WQSensor software is unavailable or the software has been downloaded from the internet. Check “Specify a location” and click **Next**.



Click **Browse** and go to the location of the driver. By default the driver is located in “C:\Program Files\NexSens\WQSensor\Driver\wqsensor.inf”.



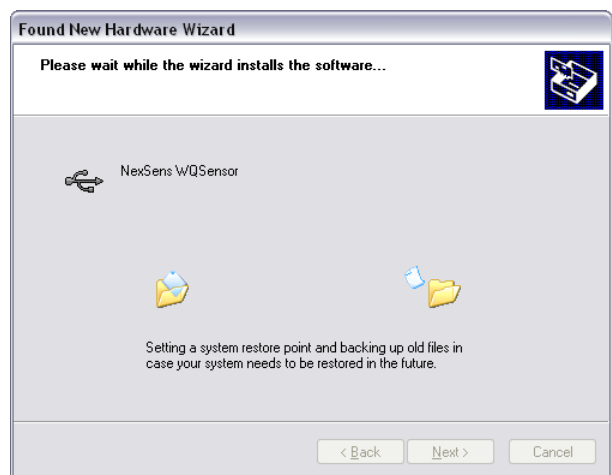
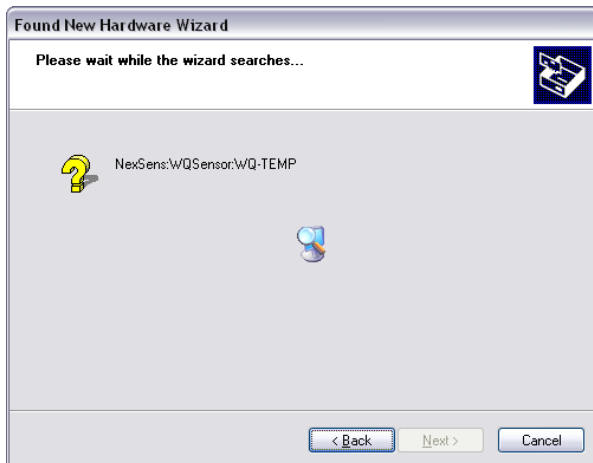
Click **Ok**



3. If the following dialog box appears, click **Continue Anyway**.



4. Windows will search for the driver.



Make sure that the driver has been successfully installed. If it has been, click **Finish**.



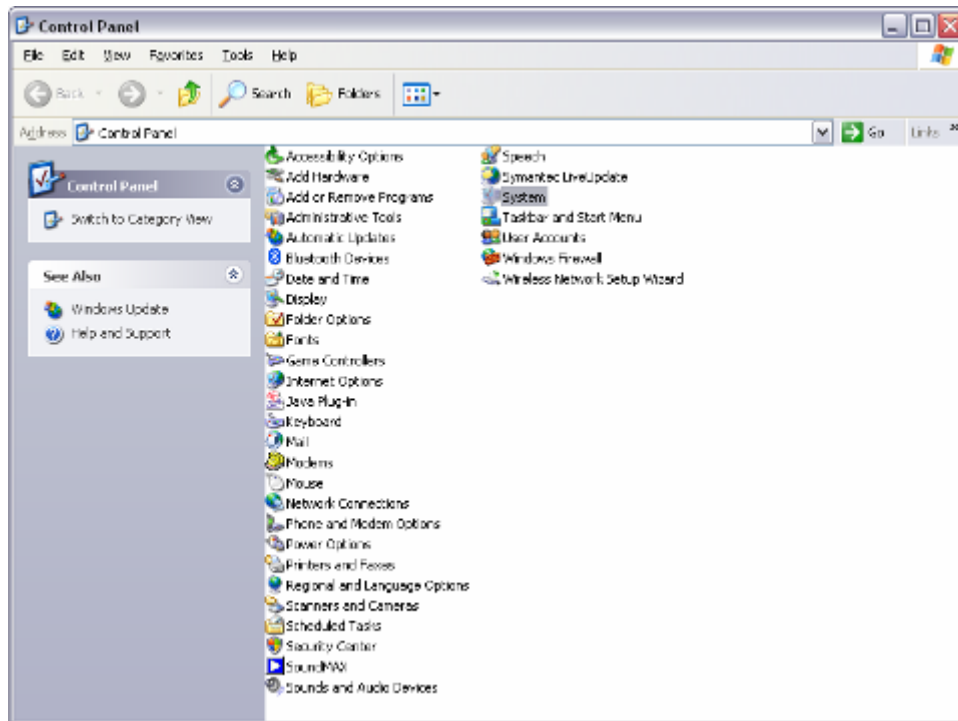
Note: The above steps only need to be completed successfully once.

If for any reason the following window appears:

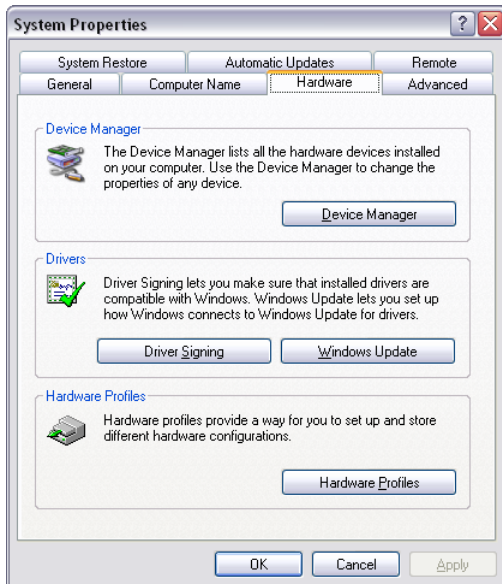


The driver will need to be reinstalled. Typically Windows will not redisplay the Found New Hardware wizard automatically again. Therefore Windows Device Manager will have to be used.

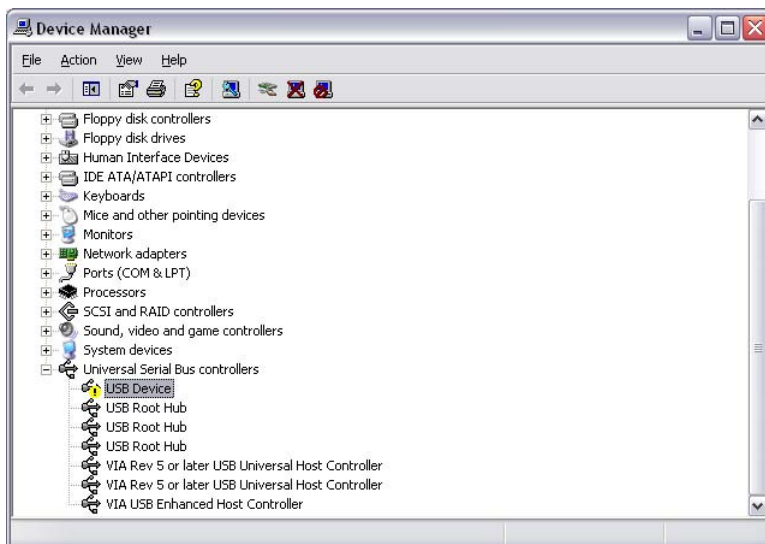
The Device Manager can be accessed by going to the **Start** menu and clicking on **Control Panel**. Click on the file labeled **System**.



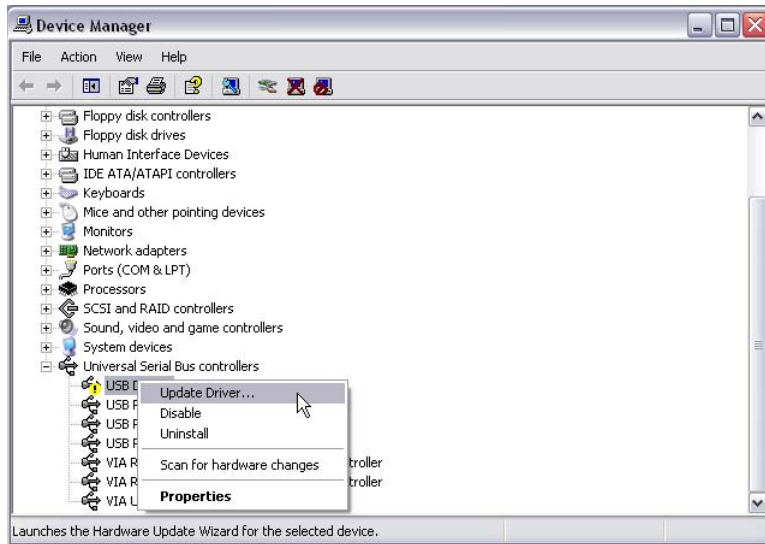
The **System Properties** dialog box will appear. Go to the **Hardware** tab and click **Device Manager**.



You should see a device labeled **USB Device** that has a yellow icon by its name.



Right click on the device and select **Update Driver**. This will restart the Found New Hardware Wizard. Go back to step one and follow to install the driver.



If you need further assistance call a NexSens Support Representative at (937)-426-2151 or email us at info@NexSens.com.

Installation for Windows Vista

In Windows Vista, driver installation is automatic. You may see a small screen pop up on the bottom right hand corner of the screen for the first few seconds the device is plugged in, after which it will appear in the software.



1415 Research Park Drive
Beavercreek, OH 45431
937-426-2703
www.NexSens.com