

Operation and Care Manual

The Legacy II Chair

Model P TYPE II



CONTENTS

Introduction	1
Label Definitions	1
Controls and Components	2
Requirements	3
Operation	4
Cleaning and Maintenance	6
Warranty	7

Introduction

This publication is a user's manual containing all the information you will need to operate and care for your Legacy II Chair. Before operating your chair, please read this manual to become familiar with its special features and functions.

The Legacy II Chair provides exceptional comfort and support during procedures. The chair is fully adjustable, from upright to supine, to ensure maximum patient comfort and ready access to the patient by the operator.

Designed for reliability and simplicity of function, your chair will provide you with years of service with a minimal amount of maintenance.

Label Definitions



Hazards which result in severe personal injury or death.



Hazards which could result in personal injury.



Hazards which could result in equipment or property damage.



Alert user to pertinent facts and conditions.



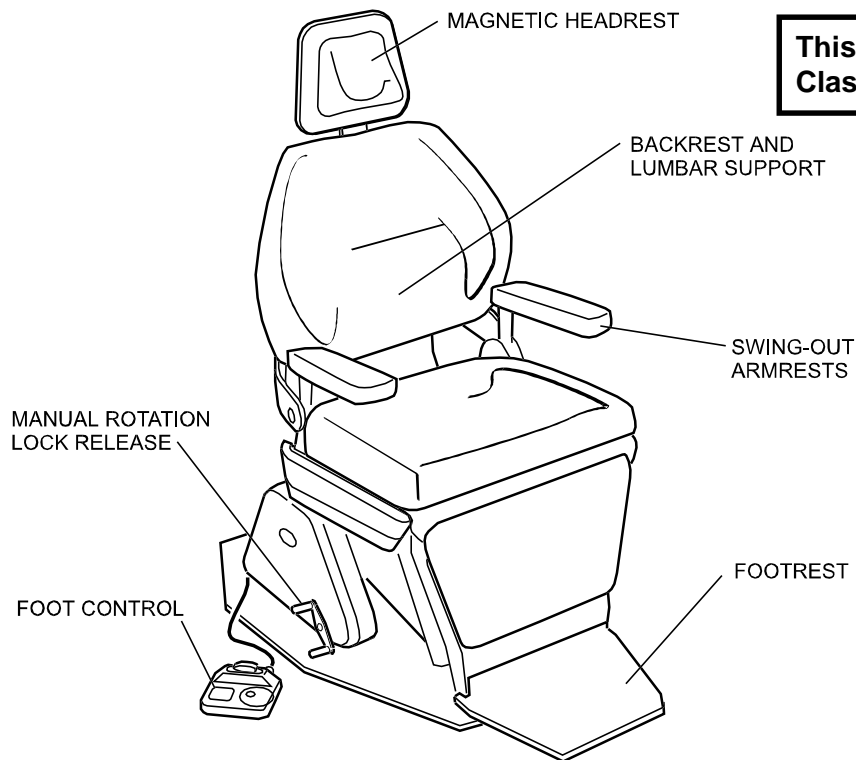
“DANGER - EXPLOSION HAZARD - DO NOT USE THIS EQUIPMENT IN THE PRESENCE OF FLAMMABLE ANESTHETICS”



CONFORMS TO
UL STD. 544
CERTIFIED TO
CAN / CSA - C22.2
NO. 125-M 1984



Controls and Components



This equipment is rated
Class I, Type B 

The components and controls identified are described below. Read the descriptions carefully to familiarize yourself with these components

MAGNETIC HEADREST - provides comfortable support for the patient's head and neck throughout the dental procedure.

BACKREST AND LUMBAR SUPPORT - a contoured seamless seat and lumbar cushion support for the patient's back.

SWING-OUT ARMRESTS - provide easy access to or from the chair on either side.

MANUAL ROTATION LOCK RELEASE - Located at the lower right side of the chair (can be relocated for left hand set up), this lever allows the operator to

rotate the chair base 360° and lock it in place at the desired position.

FOOT CONTROL - controls the proper positioning of the chair. It also provides two automatic positions, auto exit and programmable operation.

FOOTREST - provides sturdy foot support. Remains horizontal as the chair is reclined.

Requirements

PHYSICAL REQUIREMENTS

The illustration below shows the basic space requirements of your Legacy II Chair. The chair should be at least 18 inches from the nearest wall, cabinet, or any permanent fixture when in the fully reclined position. Note that the chair seat moves back 4-1/2 inches as the base is raised.

ELECTRICAL REQUIREMENTS:

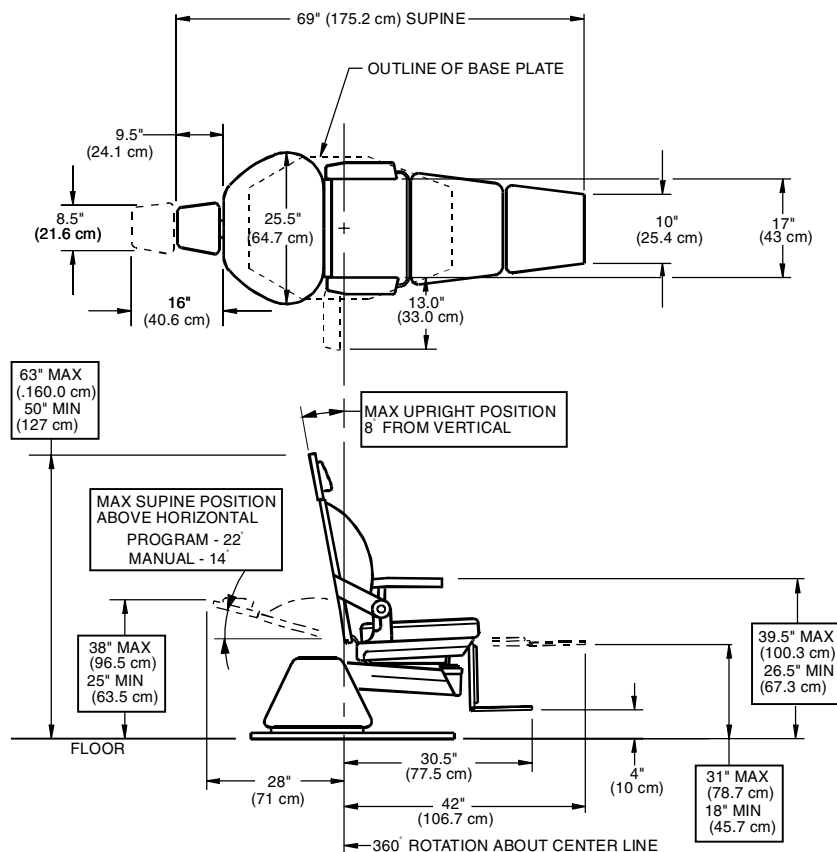
Before connecting the line cord to an appropriate receptacle, make certain that the circuit is protected by a 15-amp circuit breaker for 120-VAC models, or a 7.5-amp breaker for 240-VAC models. Ensure that all wiring is grounded and all electrical codes are observed.



WARNING - Potential shock hazard with possible personal injury. To reduce shock hazard, observe all electrical codes.

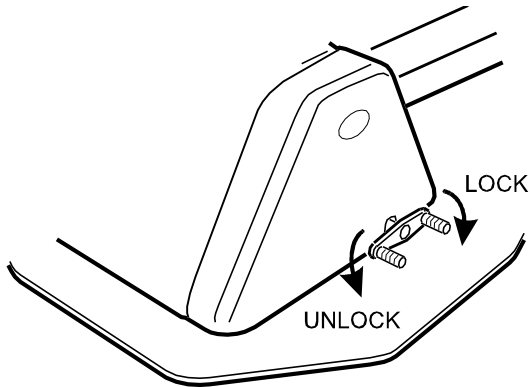


WARNING - To disconnect power to the chair, you must unplug the power cord from the electrical outlet.



Operation

The Legacy II Chair is designed for convenient operation. This section will explain in detail the functions of the electrical and manual controls. Refer to page 2 for a general description and location of these controls.

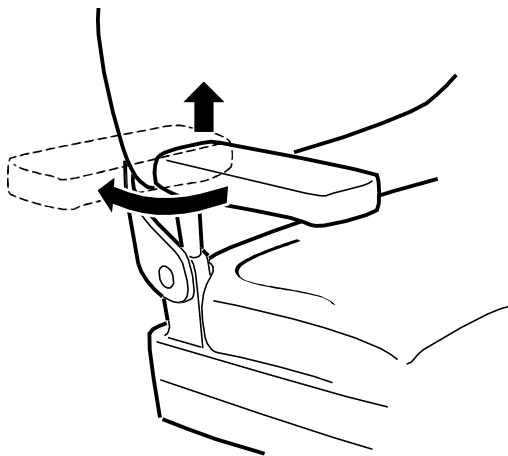
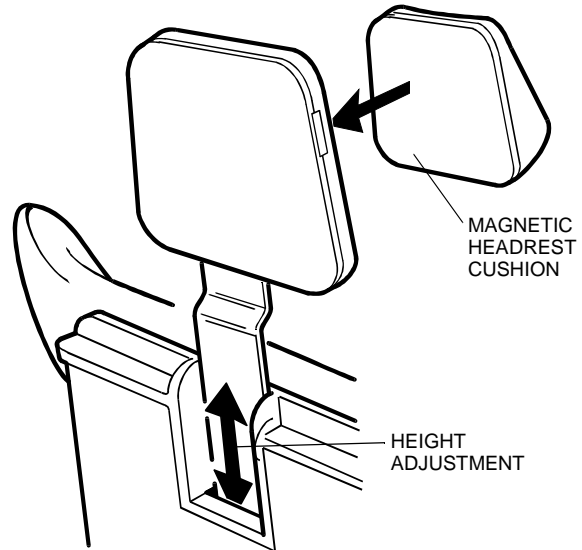


ROTATION LOCK RELEASE

▶ The chair will rotate at its base 360°. Press the left hand side of the rotation lock release and rotate the chair to the desired position. Lock the chair in place by depressing the right-hand side of the lock release.

STANDARD MAGNETIC HEADREST

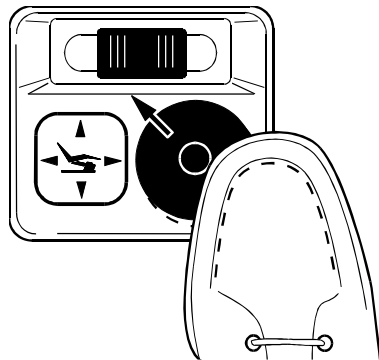
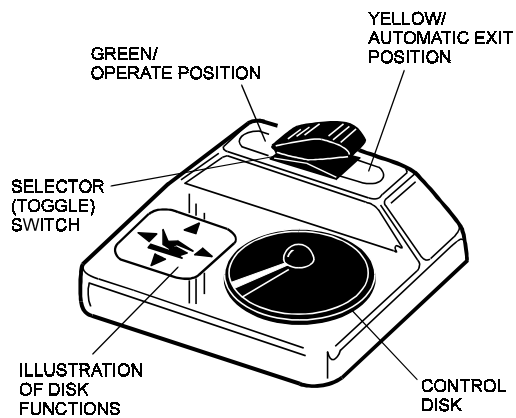
▶ The headrest height can be easily adjusted by simply pulling out or pushing in on the headrest assembly. The cushion is held to the headrest by a magnet and can be positioned as desired.



SWING OUT ARMREST

▶ Grasp the armrest with both hands and pull up and then swing it out away from the chair. With the patient seated, push the armrest back until it locks in place.

Operation



FOOT CONTROL OPERATION

The foot control, consisting of a selector (toggle) switch and a control disk, is operated as follows:

- The Selector Switch toggles to the Operate (green) **or** Automatic Exit (yellow) positions.
- The Operate position is actuated by pressing the selector switch to the position indicated in green. At this position the control disk is functional and the chair can be positioned as follows:

1. Actuate and hold the control disk to the desired quadrant. For example, sliding the disk to the left will actuate the back-down position.

2. Two functions can be actuated simultaneously by sliding the disk in a diagonal direction. For example, the illustration shows the simultaneous actuation of the back-down and base-up functions.

3. Releasing the disk stops the movement of the chair.

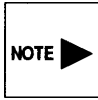
- The Automatic Exit position is actuated by pressing the selector switch to the position indicated in yellow. At this position the control disk is non-functional.



WARNING: Once the Automatic Exit function is actuated, this function may be stopped by pressing the selector switch to the operate position.

Cleaning and Maintenance

After installation has been completed, thoroughly clean the chair and upholstery. After the initial cleaning, it should be cleaned as necessary and **at least weekly**. Observe the following instructions.



A NOTE ABOUT THE UPHOLSTERY: All Knight Chair upholstery is made from the highest quality materials available and is designed for maximum patient comfort, easy cleaning and durability. Knight Chair upholstery will provide years of service when correctly maintained according to the Operator and Care Manual. Like all fine upholstery some minor wrinkles, waves or changes may occur. These changes are natural and in no way affect the performance or life of the product.

CLEANING THE UPHOLSTERY

When cleaning upholstery, it is suggested that you use all recommended commercial cleaning agents in an inconspicuous spot to check for potential damage to the upholstery material before applying to the entire area to be cleaned. For everyday cleaning, we recommend a mild dish washing liquid, warm water, and a damp white cloth. Spraying upholstery with a silicone-based coating will improve luster and soil resistance.

CLEANING PAINTED SURFACES

The painted metal surfaces are covered in durable, powder-coated paint which is resistant to scratching and scuffing. It may be cleaned with a clean cloth dampened with mild, soapy water. To add luster and dirt resistance, use a pre-softened car wax.

RECOMMENDED INFECTION CONTROL PRODUCTS

The disinfectant/cleaner products that we have tested and recommend for our upholstery, painted items and plastic covers are as follows:

Cavicide

distributed by E&D Dental Products Inc., Westfield, NJ

Precise - Hospital Foam Cleaner Disinfectant

manufactured by Caltech Industries, Inc., Midland, MI



CAUTION: Follow manufacturer's directions for concentration and application of disinfecting material. Avoid prolonged application of any disinfectant/cleaner products, because they may cause staining of upholstery material.

TROUBLESHOOTING

Only in case of no power to the chair should dental personnel attempt to remedy the problem. In this case, (1) make sure that the power cord is firmly plugged into the receptacle or (2) check that the main circuit breaker to the chair is turned on.



CAUTION: All troubleshooting and maintenance on the chair should be performed by a qualified technician. Dental personnel must not attempt to perform any maintenance functions on the chair, attempt to replace any fuses or other electronic components, or attempt to gain access to the motors or other units.

LUBRICATION

After extended use your chair may require lubrication at pivot joints (i.e. chair back pivot joint). Lubricate the joints with a drop of light weight oil or silicone lubricant.

Warranty

WARRANTY

Knight Mfg. Inc. products are warranted against defect in material and workmanship for a period of 2 years, unless otherwise indicated in writing, from the time of delivery.

Exceptions:

- 1) "KINK-VALVE" module carries a 10 year warranty.
- 2) The original light bulb on a new light carries a 1 year warranty.
- 3) Accessories not manufactured by Knight are excluded (i.e. Fiber optic systems, Scalers, Electric micromotor systems, Curing light systems, X-ray viewers, etc.)
- 4) Replacement parts and accessories carry a 90 day warranty.

Knights sole obligation under the warranty is either to provide parts for the repair or to provide the replacement product (excluding labor and shipping). The buyer shall have no other remedy. All special, incidental and coincidental damage is excluded. Written notice of breach of warranty must be given to Knight within the warranty period.

The warranty does not cover damage resulting from improper installation or maintenance, accident or misuse. The warranty does not cover damage resulting from the use of cleaning, disinfecting or sterilization chemicals and processes.

No other warranties as to merchantability, fitness for use or otherwise are made.

Notes

Notes

Knight®

by Midmark

Midmark Corporation • P O Box 286 • 60 Vista Drive
Versailles • Ohio • 45380-0286 • www.midmark.com
Phone: 937-526-3662 Fax: 937-526-5542