

INTRODUCTION

The CGO SteadyGrip™ is a ground handle designed to extend the CGO3 3-axis gyro stabilized camera from the sky to the ground. The camera pitch controller allows precise camera angle control on the go using your mobile device as a display. The SteadyGrip's ergonomic design is capable of holding up to a 6.4 inch mobile device.

CGO3 (available separately) is an innovative combination of 3-axis brushless gimbal, camera and digital video downlink.

The Self-Stabilizing gimbal makes it possible to capture amazing photographs and video footage for an array of uses. And the built-in digital video link delivers streaming video to 5.8GHz WiFi compatible iOS® and Android™ equipped devices including smart-phones and tablets as well as YUNEEC Personal Ground Stations.

WINDOWS SYSTEM REQUIREMENTS

Windows XP (Service Pack 2 or later) or Vista
3.2GHz Pentium 4 or faster
Minimum 4GB of system RAM

MAC SYSTEM REQUIREMENTS

Mac OS® X 10.4.11 or later
2.0GHz Intel Core Duo or faster
Minimum 4GB of system RAM

CGO3 APP COMPATIBLE DEVICES

Android:
Mobile Devices with 5.8GHz Support

Apple iOS:
iphone 5/5c/5s/6/6 Plus
ipad mini/mini+/3/4

SPECIFICATIONS

STEADYGRIPTM

Dimensions: 230 X 70 X 190 mm (9.06 X 2.76 X 7.48 in)
Weight (without gimbal/batteries): 350 g (12.35 oz)
Angle Control Range (Pitch): 30° - 85°
Required Batteries: 11.1 V 1400 mAh 3C
Runtime: 90 min (depending on usage)

CGO3

Dimension: 4.2 x 5.0 x 3.1 in (106x128x80 mm)
Weight: 7.05oz (200g)
Sensor: 1/2.3" CMOS
Effective Pixels: 12 Megapixels
Camera lens: 0.6in (14 mm)/F2.8 (1.4 in/35 mm)
FOV: 115 Degree
Electronic Shutter: 1/30 — 1/8000
Power Consumption: 18 W
Video Transmission Range: Up to 500 m (1640 ft)
Transmission System: 5.2 Ghz — 5.8 Ghz
Video UHD: 4K 30FPS

NOTICES AND WARNINGS

IMPORTANT NOTE: All safety precautions and warnings, instructions, warranties and other collateral information is subject to change at the sole discretion of Yuneec. For the most up-to-date information please visit the corresponding product page at www.Yuneec.com or contact the nearest Yuneec office or authorized distributor.

The following special language terms are used throughout the product literature to indicate various levels of potential harm when operating this product:

NOTICE: Procedures, which if not properly followed, create a possibility of property damage and/or little to no possibility of injury.

CAUTION: Procedures, which if not properly followed, create the probability of property damage and/or a possibility of serious injury.

WARNING: Procedures, which if not properly followed, create the probability of property damage, collateral damage and/or serious injury or create a high probability of superficial injury.

WARNING: Read the ENTIRE instruction manual to become familiar with the features of the product before operating. Failure to operate the product correctly can result in damage to the product, property and/or cause serious injury.

WARNING: This is a sophisticated consumer product. It must be operated with caution and common sense, and requires some basic mechanical ability. Failure to operate this product in a safe and responsible manner could result in damage to the product, property and/or cause serious injury. This product is not intended for use by children without direct adult supervision. Do not use with incompatible components or alter this product in any way outside of the instructions provided by Yuneec. The instruction manual contain instructions for safety, operation and maintenance. It is essential to read and follow all the instructions and warnings prior to assembly, setup and/or use in order to operate the product correctly and avoid damage or serious injury.

AGE RECOMMENDATION: NOT FOR CHILDREN UNDER 14 YEARS. THIS IS NOT A TOY.

GENERAL SAFETY PRECAUTIONS AND WARNINGS

WARNING: Failure to use this product in the intended manner as described in instruction manual can result in damage to the product, property and/or cause serious injury. This product is not a toy! If misused it can cause serious bodily harm and damage to property.

WARNING: As the user of this product you are solely and wholly responsible for operating it in a manner that does not endanger yourself and others or result in damage to the product or the property of others.

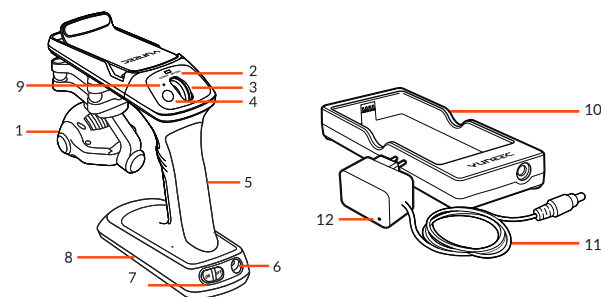
Always allow CGO3 and SteadyGrip™ to initialize properly by setting the SteadyGrip™ on a flat and stable surface prior to switching it on and allowing the SteadyGrip™ and CGO3 to initialize properly which sometimes takes about 4-8 seconds.

Always operate your SteadyGrip™ in a respectful and safe manner.

Do not attempt to operate your equipment in areas with potential magnetic and/or radio interference including areas nearby broadcast towers, power transmission stations, high voltage power lines, etc.

OVERVIEW

SteadyGrip™ Action Ground Handle for CGO Series Camera.



- | | |
|-------------------------------|----------------------------------|
| 1. CGO3 | 7. On/Off Switch |
| 2. Main Status LED | 8. 11.1V 1400mAh 3C LiPo Battery |
| 3. Pitch Control Roller Wheel | 9. Mode LED |
| 4. Mode Switch Botton | 10. Charger |
| 5. Rubberized Ergonomic Grip | 11. Adapter |
| 6. Charging Port | 12. Battery LED Status Indicator |

BATTERY WARNINGS AND USAGE GUIDELINES

WARNING: Lithium Polymer (LiPo) batteries are significantly more volatile than alkaline, NiCd or NiMH batteries. All instructions and warnings must be followed exactly to prevent property damage and/or serious injury as the mishandling of LiPo batteries can result in fire. By handling, charging or using the included LiPo battery you assume all risks associated with LiPo batteries. If you do not agree with these conditions please return the complete product in new, unused condition to the place of purchase immediately. You must always charge the LiPo battery in a safe, well-ventilated area away from flammable materials. Never charge the LiPo battery unattended at any time. When charging the battery you must always remain in constant observation to monitor the charging process and react immediately to any potential problems that may occur. After flying/discharging the LiPo battery you must allow it to cool to ambient/room temperature before recharging. To charge the LiPo battery you must use only the included charger or a suitably

compatible LiPo battery charger. Failure to do so may result in a fire causing property damage and/or serious injury. If at any time the LiPo battery begins to balloon or swell, discontinue charging or discharging immediately. Quickly and safely disconnect the battery, then place it in a safe, open area away from flammable materials to observe it for at least 15 minutes.

Continuing to charge or discharge a battery that has begun to balloon or swell can result in a fire. A battery that has ballooned or swollen even a small amount must be removed from service completely.

Do not over-discharge the LiPo battery. Discharging the battery too low can cause damage to the battery resulting in reduced power, flight duration or failure of the battery entirely. LiPo cells should not be discharged to below 3.0V each under load. Store the LiPo battery at room temperature and in a dry area for best results.

When charging, transporting or temporarily storing the LiPo battery the temperature range should be from approximately 40-120°F (5-49°C). Do not store the battery or aircraft in a hot garage, car or direct sunlight. If stored in a hot garage or car the battery can be damaged or even catch fire.

WARNING: All instructions and precautions must be read and followed exactly and you must follow instructions of the battery manufacturer.

WARNING: Procedures, which if not properly followed, create the probability of property damage, collateral damage and serious injury or create a high probability of superficial injury.

Failure to exercise care while using this product and comply with the following conditions and guidance could result in product malfunction, excessive heat, fire, property damage, and ultimately injury.

Lithium Ion batteries are not toys. For the purpose of the document Li-Ion, Li-Po, Li-Fe, NiCd or NiMH batteries will be described as "Batteries".

Handling and Storage:

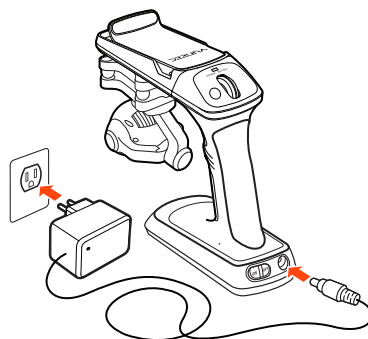
Lithium Polymer (LiPo) batteries are significantly more volatile than alkaline, NiCd or NiMH batteries. All instructions and warnings must be followed exactly to prevent property damage and/or serious injury as the mishandling of LiPo batteries can result in fire. By handling, charging or using the included LiPo battery you assume all risks associated with LiPo batteries. If you do not agree with these conditions please return the complete product in new, unused condition to the place of purchase immediately.

CHARGING THE BATTERY

There are two ways to charge the battery.

Power the SteadyGrip™ from a 100-240V AC outlet using the 12.6V 1A adapter/power supply as illustrated. The red solid LED on the adaptor indicates the battery is being charged. It will take approximately 2 hours to charge a fully discharged (not over-discharged) battery. The LED will glow solid green when fully charged.

NOTICE: The AC plug type will vary depending on the region in which the product was imported/purchased (AU = Australian; EU = European; UK = United Kingdom; US = United States).

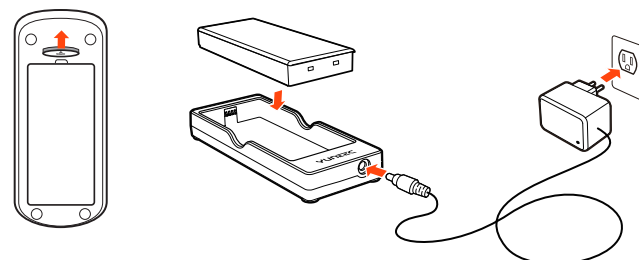


The other way is:

Step 1) Switch the OPEN with slight force and the LiPo battery will be ejected, then it can be taken from the battery compartment.

Step 2) Insert the Battery with the side attached a label facing downward.

Step 3) Power the Charger from a 100-240V AC outlet using the 12.6V 1A adapter/power supply, the red solid LED on the adaptor indicates the battery is being charged. It will take approximately 2 hours to charge a fully discharged (not over-discharged) battery. The LED will glow solid green when fully charged.



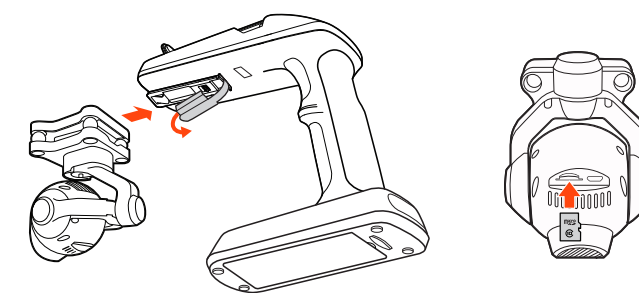
INSTALLING THE LiPo BATTERY

Install the LiPo Battery in the battery compartment with the side attached a label facing to the battery compartment. Once you've heard and felt a noticeable "click", it indicates the battery has been installed securely.

ATTACHING THE CGO3 TO THE STEADYGRIPTM

WARNING: Before switching on the SteadyGrip™, it is highly recommended to first securely attach the CGO3 to your SteadyGrip™.

QUICK TIP: Make sure you have your microSD card with enough space for photos and videos handy.

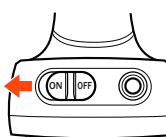


STEP 1) Remove the protective cover for the contactor as illustrated.

STEP 2) Carefully slide the top part of the CGO3 (that also attaches below the nose of the TYPHOON) onto the mount below the front part of the SteadyGrip™. A corresponding 'click' will be noticed once the CGO3 has securely been installed into the slide-in mount on the SteadyGrip™.

STEP 3) Insert a microSD card into the corresponding slot on the bottom of the CGO3. You can use the included 16GB card (from your RTF package) or any Class 10 microSD card up to 128GB.

STEP 4) Powering on and initialization. Place your SteadyGrip™ on a flat and stable surface, then switch on the SteadyGrip™ and it will initialize after 4-8 seconds of no movement or vibration.

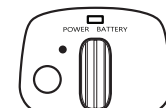


NOTICE: The CGO3 can be supplied with power through SteadyGrip™ by the Lipo Balance Connector Charge Lead (sold separately) when the contact is damaged.

SteadyGrip™ LED STATUS:

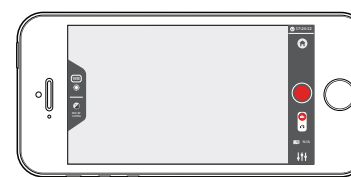
Main Status LED:
Upon Powering on: Green LED blinking for twice and then solid GREEN
Low Voltage Warning: RED LED blinking
Power Cut-off: LED solid red

Mode LED:
Pitch Follow Function on: GREEN LED solid
Pitch Follow Function off: GREEN LED off



CGO3 APP

Download the free APP named as CGO3 to smart device at the APP Store or Google Play Store. Install the APP to your 5.8GHz WiFi capable device.



NOTICE: Please be sure to enter the CGO3 WiFi first before entering the APP.

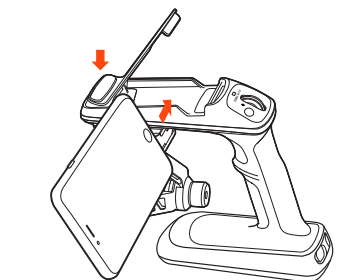
CGO3 APP COMPATIBLE DEVICES

Apple iOS:
iphone 5/5c/5s/6/6Plus
ipad mini/mini+/3/4
Android:
Mobile Devices with 5.8GHz Support



ATTACHING A MOBILE DEVICE TO THE STEADYGRIPTM

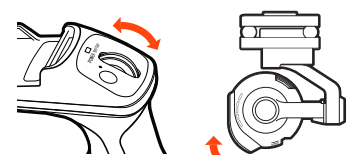
Step 1) Press the curved lip at the top front of the SteadyGrip™ as illustrated and fit your Mobile Device with the screen facing toward the Main LED and Pitch Control Wheel.



Step 2) Connect your Mobile Device to the CGO3's WiFi by selecting CGO3's SSID and by entering the WiFi Key / Password: 1234567890.

USING THE CAMERA PITCH CONTROL WHEEL

The SteadyGrip™ features a camera pitch controller that allows precise camera angle control on the go. Simply roll the pitch control wheel forward to move the camera pitch/angle downward and roll the pitch control wheel backward to move the camera pitch/angle upward. Please review these instructions along with the illustrations to familiarize yourself on how to control the CGO3 with your SteadyGrip™.



TAKING PHOTOS AND RECORDING VIDEOS

1) To take a still photo press the red Photo Taking/Video Recording button on your APP. You'll hear an audible shutter sound from the APP and the LED indicator on CGO3 front will flash in blue and green. It will take approximately 5 seconds to capture the photo and before you can take another still photo.

IMPORTANT NOTE: You cannot take still photos while recording video. You MUST stop recording video in order to take still photos.

2) To start/stop recording videos, slide the Mode button to Video Recording, then press the red button to start. You'll hear an audible indication from the APP each time the recording starts/stops. During recording, the LED indicator on CGO3 front will flash in blue and green. There will be recording time length display on the APP Screen.

3) To start/stop recording video, simply press the red button located on the APP. You'll hear an audible indication from the APP each time the recording starts/stops. And while video is recording, the LED indicator on the front of CGO3 will flash blue and green, and there will be an indicator showing time length of the recording on the APP screen.

IMPORTANT NOTE: You can choose to record video at 48, 50 (PAL) or 60 (NTSC) frames per second by tapping the corresponding button near the upper left-hand corner on main screen of the APP. Keep in mind that the delay in the live video stream will be lowest at 48 and 50 as compared to 60 frames per second.

SWITCHING THE MODE

There are two modes of SteadyGrip: Pitch Follow Mode and Angle Mode.

Pitch Follow Mode allows the gimbal to track SteadyGrip™ in pitch direction. The Pitch Follow Mode LED status indicator will be solid green.

In Angle Mode, the gimbal sticks to a fixed direction instead of following the movement of the SteadyGrip. The user can control the Pitch Direction through pitch control roller wheel.

NOTICE: The default mode of SteadyGrip™ is Pitch Follow Mode.

To Enter Angle Mode:

Press the Mode Switch Button on the top of the SteadyGrip™ to exit the Pitch Follow mode. The Pitch Follow Mode LED status indicator will be off. The SteadyGrip™ will enter Angle Mode.

To Enter Pitch Follow Mode:

Press Mode Switch Button again to enter Pitch Follow Mode. The Pitch Follow Mode LED status indicator will be solid green.

NOTE: When SteadyGrip™ is in Pitch Follow status, the gimbal camera tracks SteadyGrip™ in pitch direction, and the gimbal pitch control roller wheel on SteadyGrip™ is disabled.

FCC STATEMENT:

This equipment has been tested and found to comply with the limits for Part 15 of the FCC rules. These limits are designed to provide reasonable protection against harmful interference in a residential installation. This equipment generates, uses and can radiate radio frequency energy and, if not installed and used in accordance with the instructions, may cause harmful interference to radio communications.

However, there is no guarantee that interference will not occur in a particular installation. If this equipment does cause harmful interference to radio or television reception, which can be determined by turning the equipment off and on, the user is encouraged to try to correct the interference by one or more of the following measures:

- Reorient or relocate the receiving antenna.
- Increase the separation between the equipment and receiver.
- Connect the equipment to an outlet on a circuit different from that to which the receiver is connected.

This device complies with part 15 of the FCC rules. Operation is subject to the following two conditions:

(1) This device may not cause harmful interference, and (2) this device must accept any interference received, including interference that may cause undesired operation.

NOTE: This equipment has been tested and found to comply with the limits for a Class B digital device, pursuant to part 15 of the FCC Rules. These limits are designed to provide reasonable protection against harmful interference in a residential installation. This equipment generates, uses and can radiate radio frequency energy and, if not installed and used in accordance with the instructions, may cause harmful interference to radio communications. However, there is no guarantee that interference will not occur in a particular installation. If this equipment does cause harmful interference to radio or television reception, which can be determined by turning the equipment off and on, the user is encouraged to try to correct the interference by one or more of the following measures:

- Reorient or relocate the receiving antenna.
- Increase the separation between the equipment and receiver.
- Connect the equipment into an outlet on a circuit different from that to which the receiver is connected.
- Consult the dealer or an experienced radio/TV technician for help.

—Consult the dealer or an experienced radio/TV technician for help.

RF EXPOSURE WARNING

• This equipment must be installed and operated in accordance with provided instructions and the antenna(s) used for this transmitter must be installed to provide a separation distance of at least 20 cm from all persons and must not be co-located or operating in conjunction with any other antenna or transmitter. End-users and installers must be provided with antenna installation instructions and transmitter operating conditions for satisfying RF exposure compliance.

IC RADIATION EXPOSURE STATEMENT FOR CANADA

This device complies with Industry Canada licence-exempt RSS standard(s). Operation is subject to the following two conditions: (1) this device may not cause interference, and (2) this device must accept any interference, including interference that may cause undesired operation of the device.

Le présent appareil est conforme aux CNR d'Industrie Canada applicables aux appareils radio exempts de licence. L'exploitation est autorisée aux deux conditions suivantes : (1) l'appareil ne doit pas produire de brouillage, et (2) l'utilisateur de l'appareil doit accepter tout brouillage radioélectrique subi, même si le brouillage est susceptible d'en compromettre le fonctionnement.

This equipment complies with IC RSS-102 radiation exposure limit set forth for an uncontrolled environment.

Cet équipement respecte les limites d'exposition aux rayonnements IC définies pour un environnement non contrôlé

Any information above might be changed due to the software update. For the latest documents, please check the official website.

CUSTOMER SERVICE

<http://yuneec.com/support>

YUNEEC USA
5555 Ontario Mills Parkway,
Ontario, CA91764, USA
1 855 2848888
sales@yuneec.com

YUNEEC HK
2/F, Man Shung Industrial Building,
7 Lai Yip Street, Kwun Tong,
Kowloon, Hong Kong
852 3616 6071
asiasales@yuneec.com

YUNEEC EU
Nikolaus-Otto-Strasse 4
24568 Kaltenkirchen, Germany
+49 4191 932620
eusales@yuneec.com

YUNEEC AU
53 Ellemsea Circuit, Lonsdale
South Australia 5160
+61 (0) 8 1886 3301
aussales@yuneec.com

This device complies with part 15 of the FCC Rules. Operation is subject to the following two conditions: (1) This device may not cause harmful interference, and (2) this device must accept any interference received, including interference that may cause undesired operation.

