

# Bluetooth Mini Keyboard



***User Manual***  
***For***  
***Windows Mobile 2003***  
***Windows Mobile 5.0***  
***Based Smartphones***

## **Manufacturer's Disclaimer Statement**

The information in this document is subject to change without notice and does not represent a commitment on the part of the vendor. No warranty or representation, either expressed or implied, is made with respect to the quality, accuracy or fitness for any particular purpose of this document. The manufacturer reserves the right to make changes to the content of this document and/or the products associated with it at any time without obligation to notify any person or organization of such changes. In no event will the manufacturer be liable for direct, indirect, special, incidental or consequential damages arising out of the use or inability to use this product or documentation, even if advised of the possibility of such damages. This document contains materials protected by copyright. All rights are reserved. No part of this manual may be reproduced or transmitted in any form, by any means or for any purpose without expressed written consent of its authors. Product names appearing in this document are mentioned for identification purchases only. All trademarks, product names or brand names appearing in this document are registered property of their respective owner.

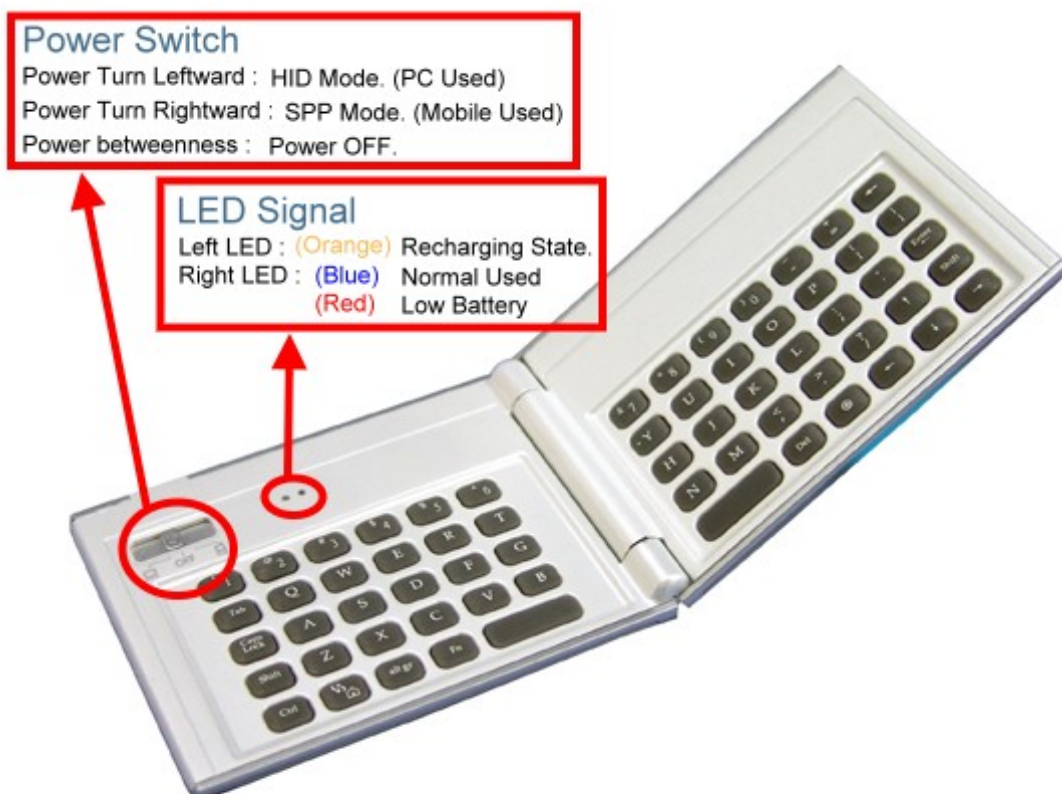
## Table of Contents

---

◆ <b>Introduction of Bluetooth Mini Keyboard .....</b>	<b>4</b>
➤ Keyboard Features .....	4
◆ <b>Driver Installation / Upgrading / Removing .....</b>	<b>5</b>
➤ System Requirements .....	5
➤ Before to Use .....	5
➤ How to Install/Upgrade/ Remove the Bluetooth keyboard Driver .....	5
◆ <b>Configuring Bluetooth Mini Keyboard .....</b>	<b>7</b>
◆ <b>The Illustration of " Config " Page .....</b>	<b>8</b>
➤ Active Keyboard .....	8
➤ Reconnection .....	9
➤ Typing Repeat Rate .....	9
➤ Typing Repeat Delay .....	10
➤ Keyboard Test .....	10
◆ <b>The Illustration of " Function " Page .....</b>	<b>11</b>
◆ <b>The Illustration of " About " Page .....</b>	<b>12</b>
◆ <b>Function key and the Combination keys .....</b>	<b>13</b>
➤ Launching Applications .....	13
➤ Other Function Key .....	13
➤ Symbol Characters .....	14
➤ Latin Characters .....	15
➤ Calculator Functions .....	16
◆ <b>Bluetooth Mini Keyboard Status LED .....</b>	<b>17</b>
◆ <b>Product Specifications .....</b>	<b>18</b>
◆ <b>Appendix A : Troubleshooting .....</b>	<b>19</b>

## Introduction of Bluetooth Mini Keyboard

### ➤ Keyboard Features



## **Driver Installation/Upgrading/Remove**

### ➤ **System Requirements**

- Windows Mobile 2003-Based / Window Mobile 5.0 Smartphone with built-in Bluetooth.
- At least 60 KB of free memory on your Smartphone.
- A computer with the Microsoft Windows 2000/XP operating system.
- A synchronizing program on your computer, such as Microsoft ActiveSync 3.6 or higher, for copying files to your Smartphone.

### ➤ **Before to Use**

- Check the batteries status of Bluetooth Mini keyboard.  
(Turn the switch on to check the Blue light on the keyboard.)
- Disable other application which will use Bluetooth port on your mobile device.

### ➤ **How to Install / Upgrade / Remove the Bluetooth keyboard Driver?**

#### ■ **Installation**

- ☐ Connect your Microsoft Smartphone through infrared/cable for ActiveSync with the computer.
- ☐ Insert Bluetooth Universal Keyboard CD into computer's CD-ROM drive.
- ☐ Follow the instruction on screen to complete the installation.
- ☐ After the Bluetooth keyboard driver is installed successfully and the Microsoft Smartphone is reset, you can find this Bluetooth Mini keyboard icon is showed on the Home Menu of the mobile device.

(Figure 1)



Figure 1

#### ■ **Upgrading**

Please check the Agent's website from time to time to check if any new driver is released.

(**Note:** Please remove the old driver out first, and then install the last one into your device.)

## ■ Removing

**Step 1** □ Turn the driver off

**Step 2** □ Tap Start -> Settings -> Remove Programs, (Figure 2) choose the "MiniKB" and click the **Yes** button. (Figure 3)

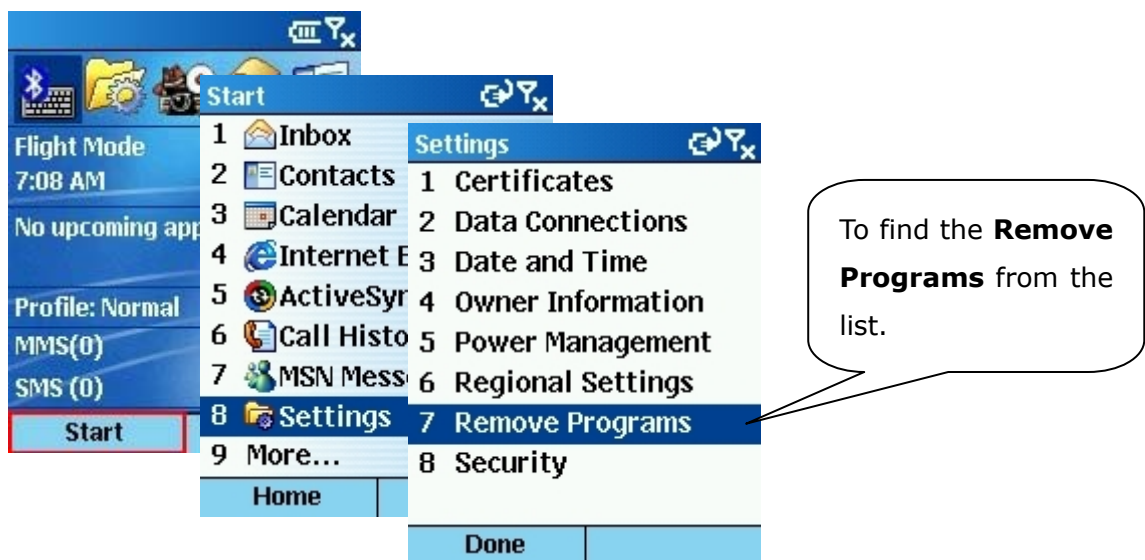


Figure 2

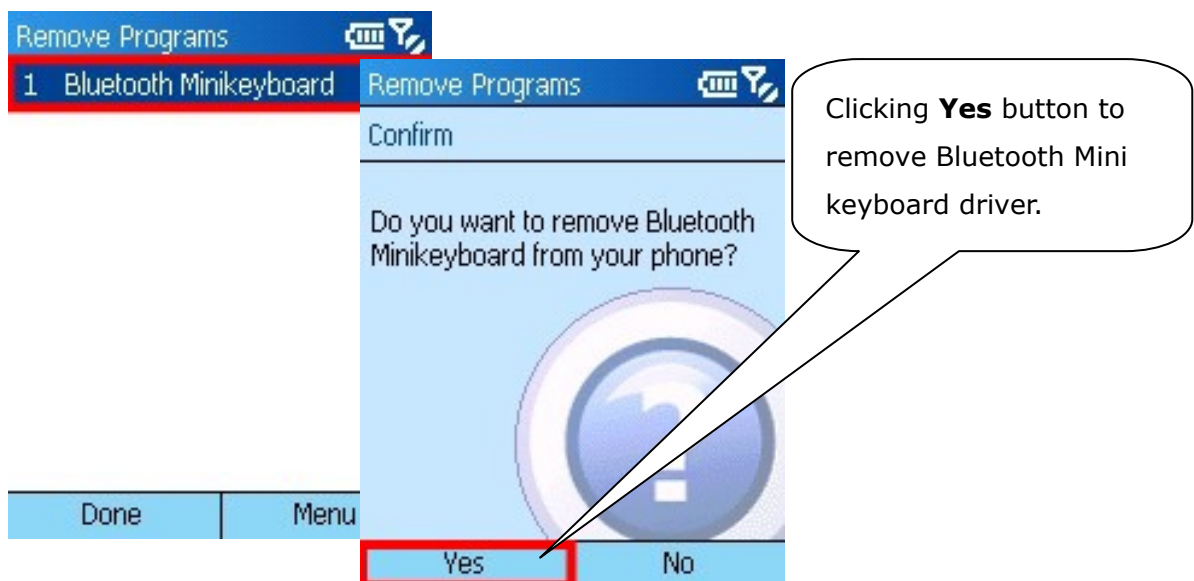


Figure 3

## Configuring Bluetooth Mini Keyboard

- When you click the “**MiniKB**” icon, you will see three pages “**Config**”, “**Function**”, “**About**”. (Figure 4)

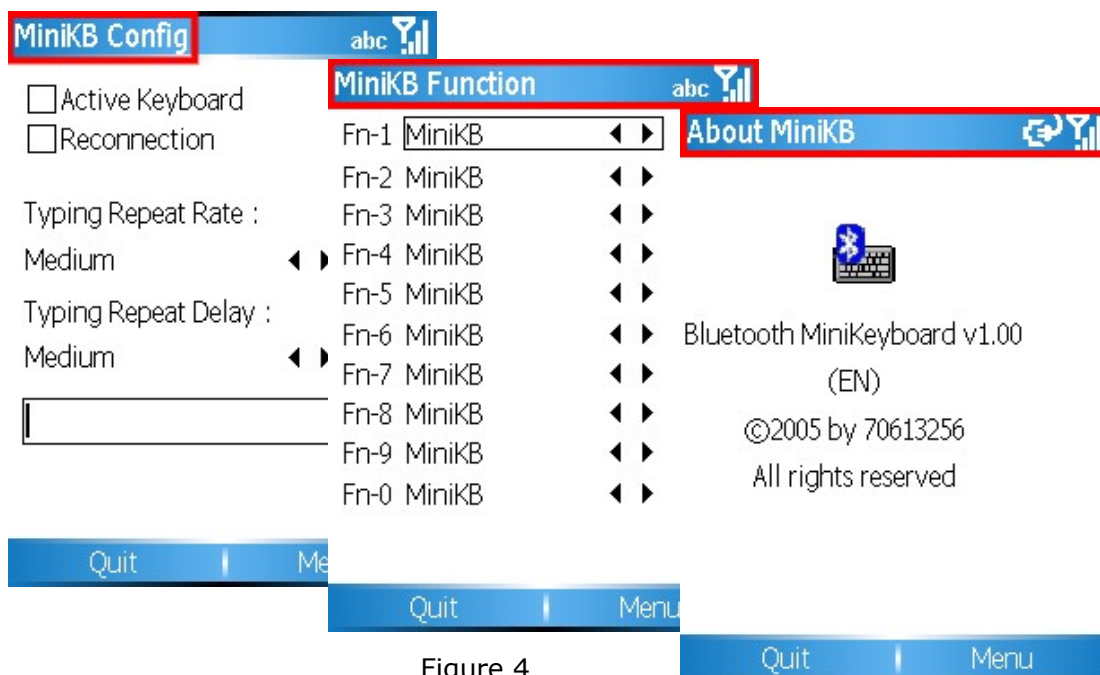


Figure 4

#### ➤ “**Config**” Page□

There are including:

“**Active keyboard**”, “**Reconnection**”, “**Typing Repeat Rate**”, “**Typing Repeat Delay**”, “**Keyboard Test**”.

#### ➤ “**Function**” Page□

This page provides ten user-definable function keys as **Hot Keys**.

#### ➤ “**About**” Page□

Provides the version of the driver installed in your handheld device.

## The Illustration of “**Config**” Page

➤ **Active Keyboard**

■ **How to connect the Bluetooth keyboard with your device??**

**Step 1:**

Turn the Bluetooth Mini keyboard on, the LED will flash blue once every other second, the Bluetooth Mini keyboard is in Discovery mode.

**Step 2:**

Click "**MiniKB**" icon in Home Menu of the Smartphone. (Figure 5)



Figure 5



Figure 6

**Step3:**

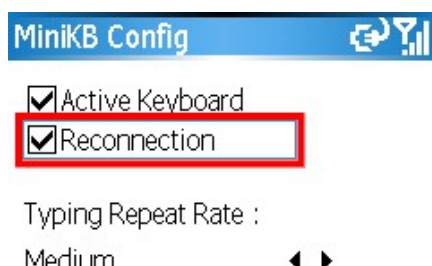
Click "**Active Keyboard**".

Smartphone will search and connect the Bluetooth Mini Keyboard automatically (Figure 6)

➤ **Reconnection**

After the connection established successfully, then you can turn "**Reconnection**" to "**On**". This function allows the Bluetooth keyboard memorizes the last connected device, and they will pair automatically in next connection without further search.

(Figure 7)



**Note:** Please do not turn "**Reconnection**" on before the first connection established



Figure 7

### ➤ Typing Repeat Rate

This option allows you to set the speed at which a letter, number or other character repeats when you press and hold a key. Use your stylus to drag the marker arrow toward **Fast** (to increase) or **Slow** (to decrease) the repeat rate.

(Figure 8)

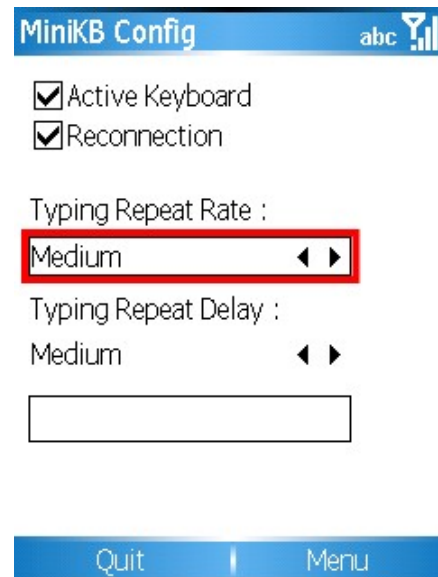


Figure 8

### ➤ Typing Repeat Delay

This option allows you to set the length of time before a letter, number or other character begins to repeat when you press and hold a key. Use your stylus to drag the marker arrow toward **Long** (to increase) or **Short** (to decrease) the length of the delay.

(Figure 9)

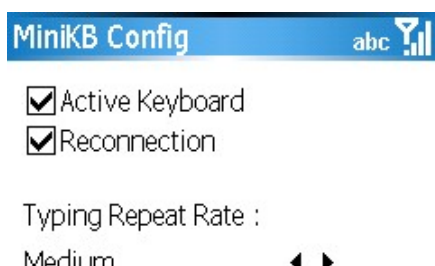


Figure 9

### ➤ **Keyboard Test**

Test the repeat rate and delay by holding down a letter or number key on the Bluetooth keyboard. The character appears according to the setting you have chosen. Change and test these settings until you achieve the desired outcome.

(Figure 10)



Figure 10

## The Illustration of “ Function ” Page

➤ **How to set function keys for your Bluetooth Mini keyboard?**

You should be able to set 10 different function keys (Fn -1, Fn -2 ~ Fn -0) .

Please use the [Fn] key to combine with the number [0] ~ [9] to activate the function key.

(Figure 11)

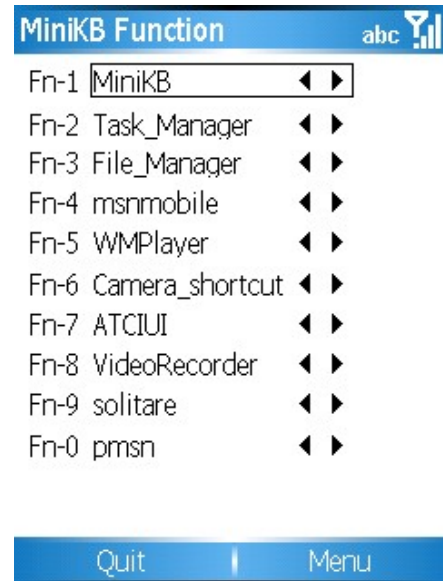


Figure 11

## The Illustration of “About” Page

➤ **How to check the version of driver?**



Please click "**About**" page. (Figure 12)

Driver version: V1.00

English    Version    ☐    EN

German    Version    ☐    DE

French    Version    ☐    FR



Bluetooth MiniKeyboard v1.00

(EN)

©2005 by 70613256

All rights reserved

Quit



Menu

Figure 12

## Function key and the Combination keys

### ➤ Launching Applications :

Launch the application by shortcut.

Function	Keystroke
Launches a specific user-defined application.	[ Fn ] + [ Number ]
Launches Today	
Launches Start Menu	[ Fn ] + [  ]
Launches "Inbox" application	[ Fn ] + [ Z ]
Launches "Contacts" application	[ Fn ] + [ X ]
Launches "Tasks" application.	[ Fn ] + [ C ]
Launches "Calendar" application	[ Fn ] + [ V ]

➤ **Other Function Key :**

Function	Keystroke
All keys embedded with <b>gray</b> characters are accessible by enabling the Num Lock setting. Enabling Num Lock emulates a 10-key keypad interface found on most standard keyboards.	[ Fn ] + [ Caps Lock ]
Left menu key	[ Ctrl ] + [ 6 ]
Right menu key	[ Ctrl ] + [ 7 ]
Dial	[ Ctrl ] + [ T ]
Hang up	[ Ctrl ] + [ Y ]
Earpiece Volume Up	[ Ctrl ] + [ G ]
Earpiece Volume Down	[ Ctrl ] + [ H ]
Record	[ Ctrl ] + [ N ]
Insert a tab	[ Tab ]

➤ **Symbol Character :**

International Character Key

Keystroke	Character
[ Alt gr ] + [ 1 ]	~
[ Alt gr ] + [ 4 ]	`
[ Alt gr ] + [ 6 ]	\
[ Alt gr ] + [ 7 ]	□
[ Alt gr ] + [ Q ]	®
[ Alt gr ] + [ W ]	©
[ Alt gr ] + [ E ]	€
[ Alt gr ] + [ Y ]	□
[ Alt gr ] + [ P ]	□
[ Alt gr ] + [ A ]	«
[ Alt gr ] + [ S ]	»
[ Alt gr ] + [ D ]	μ
[ Alt gr ] + [ F ]	Ç
[ Alt gr ] + [ G ]	ñ
[ Alt gr ] + [ H ]	¿

### ➤ Latin Characters

#### How to input Latin Character?

Press [ **Fn** ] + [ **Ctrl** ] at the same time, the Bluetooth keyboard is in Latin mode.

This table lists keystrokes to activate Latin functions.

Keystroke	Character
Q	á
W	à
E	ä
R	â
T	å
Y	ã
U	æ
I	ç
O	ñ
P	ø
A	é
S	è
D	ë
F	ê
G	í
H	ì
J	ï
K	î
L	β
;	ý
`	ÿ
Z	ó
X	ò
C	ö
V	ô
B	õ
N	ú
M	ù
,	ü
.	û
/	¿

➤ **Calculator Functions :**

Press [ **Fn** ] + [ **Caps Lock** ] at the same time, the Bluetooth keyboard is in NumLock mode. This table lists keystrokes to activate calculator functions.

keystroke	Action
/	( + ) Add
;	( - ) Subtract
P	( * ) Multiply
-	( / ) Divide
=	( = ) Equals
J	( 1 ) One
K	( 2 ) Two
L	( 3 ) Three
U	( 4 ) Four
I	( 5 ) Five
O	( 6 ) Six
8	( 7 ) Seven
9	( 8 ) Eight
0	( 9 ) Nine
M	( 0 ) Zero
,	comma
.	decimal point

## **Bluetooth Mini Keyboard Status LED**

When the Bluetooth keyboard is open, you can find a LED on your left side keyboard.



This LED can indicate the status of the keyboard and battery

- When the LED flashes **Blue** light once every other second, this is the state that the Bluetooth keyboard can be detected by handheld device.
- When the LED flashes **Blue** light twice every other second, this is the status that the Bluetooth keyboard is connected by handheld device.
- When the LED flashes **Red** light once or twice every other second, this is the batteries are in low level. You should change the batteries immediately.
- When the LED flashes **Orange** light , this is the Mini keyboard is in charge mode

## **Product Specifications**

---

Item		Typ.	Unit
Module Size (Close)	Horizontal (H)	90	mm
	Vertical (V)	71	mm
	Depth (D)	12	mm
Module Size (Open)	Horizontal (H)	172	mm
	Vertical (V)	71	mm
	Depth (D)	6	mm
Weight	Net	83	g

**Absolute Maximum Rating**

Item	Min	Max	Unit	Note
Operation Temperature	-10	50	□	Humidity Condition □ 5 ~ 90%RH
Storage Environmental	-30	70	□	Humidity Condition □ 5 ~ 90%RH

**Appendix A : Troubleshooting**

**1. How do I verify my Smartphone Operation System version?**

- Tap "Start → Settings → About".
- You can see Smartphone OS software version here.

**2. I am not able to install Bluetooth keyboard driver to my Smartphone?**

- Please ensure the connection cable is connected between computer and Smartphone.
- Please check Microsoft "ActiveSync" software is right down on your system tray.
- Click "Start → ActiveSync" on your Smartphone"
- To synchronize Smartphone and computer to ensure connection is fine. (If you did fail to connect with your computer, please check the connection between Smartphone and PC first.)
- Follow Bluetooth Mini keyboard user guide to repeat installation.

**3. Why Smartphone has no response when I type on Bluetooth keyboard?**

- Make sure the keyboard is in the connected status by LED flash time.
- Check the battery of mobile device is charged.
- Check the batteries of Bluetooth Mini keyboard have enough power by LED color.

**4. Why couldn't I remove the Bluetooth keyboard driver from my device?**

- Please check if the Bluetooth Mini keyboard still in the link mode or not. If the keyboard still connected with your device, please close the application from your device and try again.