

## Release Notes – Milestone XProtect® Essential 2

It is with great pleasure that Milestone Systems releases XProtect Essential 2:

### **XProtect Essential 2 – Brilliant simplicity**

XProtect Essential is open platform IP video management software (VMS) designed for small, single-server businesses and can manage up to 26 surveillance cameras. XProtect Essential provides a wide offering of video surveillance features to effectively and intuitively view and export your video evidence. XProtect Essential is cost effective with a flexible licensing model that allows you to easily add cameras and expand your system.

### **New features in XProtect Essential 2**

XProtect Essential 2 with XProtect® Smart Client 6 and XProtect® Smart Client – Player, has been expanded with more features designed to:

- enable quicker set up of installations
- be more cost effective

### **Quick and easy deployment of small installations**

A new license activation and software installer makes system setup quicker and easier for system integrators and setup errors are decreased.

- **New installer**  
All XProtect Essential components and language resources have been merged into one coherent, simplified installer, enabling a quicker installation process that results in more error-free deployments.
- **New license activation**  
Installations are quicker and easier to deploy and maintain with an automatic online activation of system and camera licenses. Newly added cameras are fully functional during a 30-day grace period enabling instant camera replacement. This also removes the need to keep track of MAC addresses and device licenses because this information is automatically gathered and processed by the system. If the system is not connected to the Internet it is still possible to activate the system and corresponding devices by exporting a license file that can be activated from an online computer.

### **Cost effective**

XProtect Essential 2 provides current and potential customers with performance enhancements that optimize existing hardware and features that provide new viewing and recording possibilities.

- **Dual streaming**  
Hardware is optimized with two independent, configurable video streams for live and recorded viewing, allowing clients, servers and network infrastructure to be utilized to their full capacity. Each stream can be individually optimized on the XProtect Essential 2 server for stream compression, resolution and frame rate, meeting recording and live monitoring requirements.
- **ImmerVision Enables® 360° panomorph lens technology**  
More critical information can now be captured on video with the introduction of the 360° panomorph lens technology support in XProtect Essential 2. The 360° panomorph lens technology can significantly decrease hardware and license costs because coverage obtained from one license-free lens mounted on a regular camera on the ceiling or on the wall replaces the coverage obtained by many regular cameras and lenses.
- **Motion detection**  
Performance-enhanced motion detection lowers memory and central processing unit (CPU) consumption even when additional cameras are added.

XProtect is a registered trademark of Milestone Systems A/S. Microsoft and Windows are registered trademarks of Microsoft Corporation. All other trademarks mentioned in this document are trademarks of their respective owners. This document is intended for general information purposes only, and due care has been taken in its preparation. Any risk arising from the use of this information rests with the recipient, and nothing herein should be construed as constituting any kind of warranty. Milestone Systems A/S reserve the right to make adjustments without prior notification. All names of people and organizations used in this document's examples are fictitious. Any resemblance to any actual organization or person, living or dead, is purely coincidental and unintended.

## Other great new features

XProtect Essential 2 has several additional new features:

- **Privacy masking**  
The privacy masking capability enables administrators to define privacy masks for individual cameras to hide areas in the camera view that must not be visible or recorded in order to comply with local legislation.
- **Language support**  
The XProtect® Essential Management Application is available in 11 languages; Portuguese (Brazil), Russian and Traditional Chinese are new in the XProtect Essential 2 release.

## XProtect Smart Client 6

- **Native 64-bit operating system version**  
The native 64-bit Smart Client enables a larger number of high-definition (HD) and megapixel cameras to be viewed and managed. Please note that some XProtect Smart Client features might not be available in the 64-bit version (please see the readme files for details).
- **XProtect Smart Client – Player**  
The XProtect Smart Client – Player substitutes the former viewer application. It has the same look and feel as the XProtect Smart Client because they share the same platform, allowing you to access the same features for investigation and playback. It is possible to export a wide range of sources including: video, audio, HTML content, and images. Efficient handling of multiple exports with new “project” concept allows additional video exports or archives to be added to an existing project, the possibility to create new projects offline or use common tampering and password protection.
- **Localization**  
XProtect Smart Client now supports 26 languages; Portuguese (Brazil), Russian and Traditional Chinese have been added in XProtect Smart Client 6.

## System requirements

### XProtect Essential Server 2.0a

- **Hardware platform:**  
CPU: Intel® Pentium® 4, 2.4 GHz or higher (Core™ 2 recommended).  
RAM: Minimum 5 GB (2 GB or more recommended).  
Minimum 10 GB free hard disk space available, excluding space needed for recordings.  
Ethernet (1 GB recommended)  
HDD: E-IDE, PATA, SATA, SCSI, SAS (7200 RPM or faster).  
Onboard GFX, AGP or PCI-Express, minimum 1024 x 768, 16 bit colors.
- **Operating system:**  
Microsoft® Windows® XP Professional (32 bit or 64 bit\*), Windows Server 2003 (32 bit or 64 bit\*), Windows Server 2008 R1/R2 (32 bit or 64 bit\*), Windows Vista™ Business (32 bit or 64 bit\*), Windows Vista Enterprise (32 bit or 64 bit\*), Windows Vista Ultimate (32 bit or 64 bit\*), Windows 7 Professional (32 bit or 64 bit\*), Windows 7 Enterprise (32 bit or 64 bit\*) and Windows 7 Ultimate (32 bit or 64 bit\*).
- **Software:**  
Microsoft .NET 4.0 Framework.  
DirectX 9.0 or newer.

### XProtect Smart Client 6.0a and XProtect Smart Client – Player

XProtect is a registered trademark of Milestone Systems A/S. Microsoft and Windows are registered trademarks of Microsoft Corporation. All other trademarks mentioned in this document are trademarks of their respective owners. This document is intended for general information purposes only, and due care has been taken in its preparation. Any risk arising from the use of this information rests with the recipient, and nothing herein should be construed as constituting any kind of warranty. Milestone Systems A/S reserve the right to make adjustments without prior notification. All names of people and organizations used in this document's examples are fictitious. Any resemblance to any actual organization or person, living or dead, is purely coincidental and unintended.

- **Hardware platform:**  
CPU: Intel Core2™ Duo, minimum 2.4 GHz or higher (more powerful CPU recommended for Smart Clients running high number of cameras and multiple views and displays).  
RAM: Minimum 1 GB (higher RAM recommended for Smart Clients running high number of cameras and multiple views and displays).  
NETWORK: Ethernet (100 Mbit or higher recommended).  
HDD: Minimum 500 MB free.  
Graphics Adapter: AGP or PCI-Express, minimum 1024 x 768 (1280 x 1024 recommended), 16 bit colors.
- **Operating system:**  
Microsoft Windows XP Professional (32 bit or 64 bit), Windows Server 2003 (32 bit or 64 bit), Windows Server 2008 R1/R2 (32 bit or 64 bit), Windows Vista Business (32 bit or 64 bit), Windows Vista Enterprise (32 bit or 64 bit), Windows Vista Ultimate (32 bit or 64 bit), Windows 7 Professional (32 bit or 64 bit), Windows 7 Enterprise (32 bit or 64 bit) and Windows 7 Ultimate (32 bit or 64 bit).
- **Software:**  
Microsoft .NET 4.0 Framework  
DirectX 9.0.

### **XProtect® Remote Client 3.7a**

- **Hardware platform:**  
CPU: Intel Pentium® 4, minimum 2.4 GHz  
RAM: Minimum 1 GB (2 GB or higher recommended on Microsoft Windows Vista).  
Ethernet (100 megabit or higher recommended)  
HDD: Minimum 10 MB free  
Graphic Adapter: AGP or PCI-Express, minimum 1024 x 768 (1280 x 1024 recommended), 16 bit colors.
- **Operating system:**  
Microsoft Windows 7 Ultimate (32 bit or 64 bit\*), Microsoft Windows 7 Enterprise (32 bit or 64 bit\*), Microsoft Windows 7 Professional (32 bit or 64 bit\*), Microsoft Windows Server 2008 R2 (64 bit), Microsoft Windows Server 2008 (32 or 64 bit\*), Microsoft Windows Vista Business (32 or 64 bit\*), Microsoft Windows Vista Enterprise (32 or 64 bit\*), Microsoft Windows Vista Ultimate (32 or 64 bit\*), Microsoft Windows XP Professional (32 or 64 bit\*) or Microsoft Windows Server 2003 (32 or 64 bit\*)
- **Software:**  
DirectX 9.0, or newer

Where:

\*) Running as a 32 bit service/application

### **Supported languages**

#### **XProtect Essential Server 2.0a**

- English, Portuguese (Brazil), Simplified Chinese, Traditional Chinese, Danish, French, German, Italian, Japanese, Russian and Spanish.
- Administrator's Getting Start Guide is available in English, Portuguese (Brazil), Simplified Chinese, Traditional Chinese, Danish, French, German, Italian, Japanese, Russian and Spanish.
- The XProtect Essential help system is available in English, French, Portuguese (Brazil) and Simplified Chinese.

#### **XProtect Smart Client 6.0a and XProtect Smart Client – Player**

- English, Arabic, Bulgarian, Portuguese (Brazil), Simplified Chinese, Traditional Chinese, Czech, Danish, Dutch, Finnish, French, German, Hebrew, Hindi, Hungarian, Italian, Japanese, Korean, Norwegian, Polish, Russian, Swedish, Slovak, Spanish, Thai and Turkish.

XProtect is a registered trademark of Milestone Systems A/S. Microsoft and Windows are registered trademarks of Microsoft Corporation. All other trademarks mentioned in this document are trademarks of their respective owners. This document is intended for general information purposes only, and due care has been taken in its preparation. Any risk arising from the use of this information rests with the recipient, and nothing herein should be construed as constituting any kind of warranty. Milestone Systems A/S reserve the right to make adjustments without prior notification. All names of people and organizations used in this document's examples are fictitious. Any resemblance to any actual organization or person, living or dead, is purely coincidental and unintended.

- The XProtect Smart Client Help System and User's Manual is available in all languages except Bulgarian, Finnish, Hebrew, Hindi, Hungarian, Slovak and Thai.

**XProtect Remote Client 3.7a**

- English, German, French, Spanish, Simplified Chinese, Japanese, Italian, Danish and Swedish.
- XProtect Remote Client User's Manual is only available in English and Simplified Chinese.

**Licensing**

The overall licensing structure of XProtect Essential 2 is unchanged, where all new features are made available within the existing licensing scheme. Licenses issued for XProtect Essential 1 are not valid for version 2. These licenses can be traded-in in conjunction with an upgrade to XProtect Essential 2, according to Milestone's present trade-in policy.

**Base Server License**

- An Essential base server license is mandatory for installing the product.
- The Essential base server license includes 2 camera licenses.
- The base server license contains the Essential server modules: Recording Server, Viewer, Recording Server Manager, Image Server, plus the client modules: Smart Client and Remote Client.

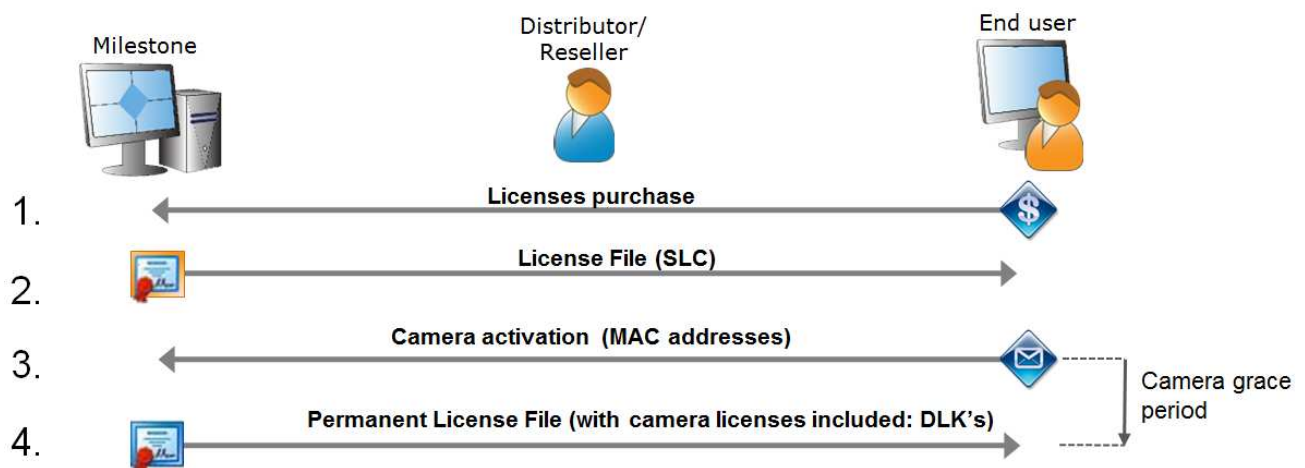
**Camera License**

- To connect to a camera, a license per camera channel is required. In total, for all copies of the product installed under this license, the product may only be used with as many cameras as you have purchased camera licenses for.
- Video encoders and DVRs connected to multiple analog cameras require a camera license per channel to operate.
- Camera licenses can be purchased in any numbers. To extend the installation with additional camera licenses, the SLC is required when ordering.

**Client License**

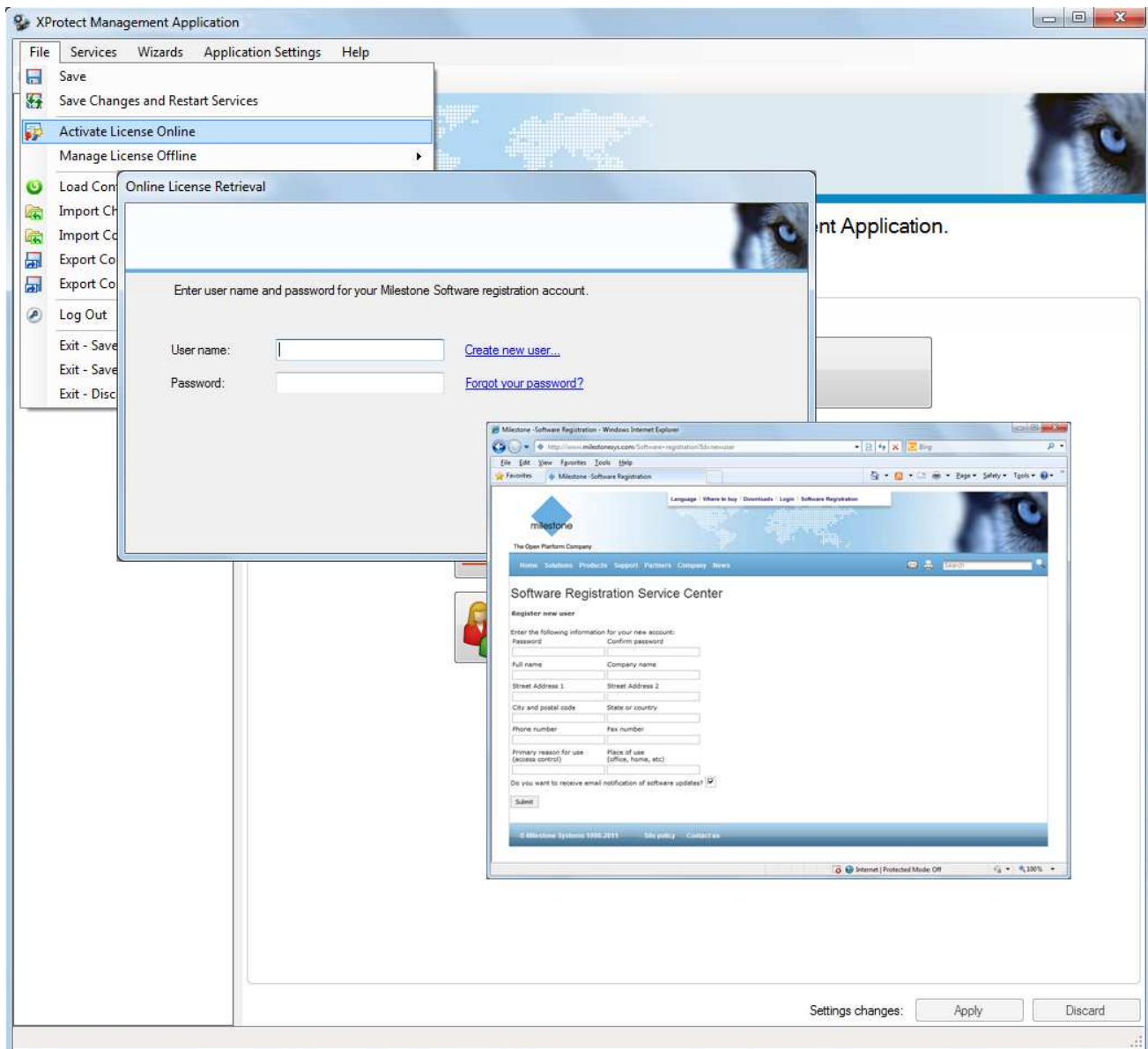
- The XProtect Smart Client, XProtect Smart Client – Player and XProtect Remote Client are not licensed and can be installed and used on any number of computers.

Please note that the new license activation requires a new procedure for purchasing and distributing SLCs and DLKs (including device MAC addresses). Instead of distributing these (SLCs and DLKs) a license file is used which contains all this information (almost an identical license handling procedure as in XProtect® Enterprise 8 and XProtect® Corporate).



As seen in the illustration above:

- End user purchases a Base Server License with a number of camera licenses.
  - Distributor/Reseller issues the order from Milestone's order system.
- The Milestone order system creates a license file containing the base server license (SLC). The file can either be saved for later distribution to the end user or the license file can be emailed directly to the end user. Please note that the name of the license file is in the structure "SLC\_License\_Number.LIC".
  - The license file can either be added during the installation or at a later stage. However if no license file is added then the software will be installed with a 30-day trial period.
  - One or multiple cameras are then added to the system. These will be fully functional during the 30-day camera grace period.
- Within the 30-day grace period the cameras need to be activated online using the Milestone Software Registration Service Center.
  - If no account exists then one needs to be created in the Milestone Software Registration Service Center. The account is automatically linked to the base server license (SLC) and the allowed number of camera licenses that can be obtained.
  - The XProtect Essential 2 system automatically collects all information necessary for obtaining the correct number of camera licenses (DLK's, based upon camera MAC addresses).
- A permanent license file is automatically added to the system.



## Upgrade to XProtect Essential 2

The new installer for XProtect Essential 2 makes it possible to upgrade from version 1.0. Any configurations completed in the previous versions will be automatically transferred to the XProtect Essential 2 installation. For more details please see the Getting Started guide.

Best regards,

The Milestone Team  
[www.milestonesys.com](http://www.milestonesys.com)