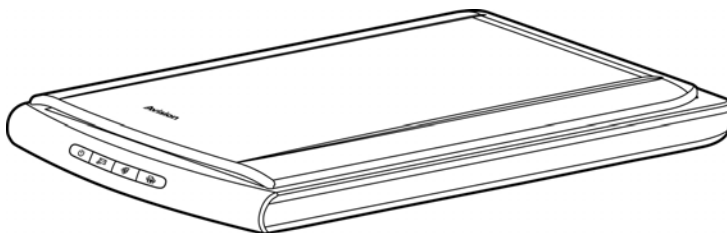




Color Image Scanner

User's Manual



Regulatory model: FB1200+

manual-en-250-0845-E-fb1200+v200

Avision Inc.

Trademarks

Microsoft is a U.S. registered trademark of Microsoft Corporation.

Windows, Windows Vista, Windows XP, Windows 7 and Windows 8 are either registered trademarks or trademarks of Microsoft Corporation in the United States and/or other countries.

IBM, IBM PC are registered trademarks of International Business Machines Corp.

ENERGY STAR[®] and the ENERGY STAR mark are registered trademarks of the U.S. Environmental Protection Agency.

Other brands and product names herein are trademarks or registered trademarks of their respective holders.

Copyright

All rights reserved. No part of this publication may be reproduced, transmitted, transcribed, stored in a retrieval system, or translated into any language or computer language, in any form or by any means, electronic, mechanical, magnetic, optical, chemical, manual, or otherwise, without the prior written permission of Avison Inc.

Material scanned by this product may be protected by governmental laws and other regulations, such as copyright laws, the customer is solely responsible for complying with all such laws and regulations.

Warranty

The information contained in this document is subject to change without notice.

Avison makes no warranty of any kind with regard to this material, including, but not limited to, the implied warranties of fitness for a particular purpose.

Avision shall not be liable for errors contained herein or for incidental or consequential damages in connection with the furnishing, performance, or use of this material.

FCC Statement:

This equipment has been tested and found to comply with the limits for a Class B digital device, pursuant to Part 15 of the FCC Rules. These limits are designed to provide reasonable protection against harmful interference in a residential installation. This equipment generates, uses and can radiate radio frequency energy and, if not installed and used in accordance with the instructions, may cause harmful interference to radio communications.

However, there is no guarantee that interference will not occur in a particular installation. If this equipment does cause harmful interference to radio or television reception, which can be determined by turning the equipment off and on, the user is encouraged to try to correct the interference by one of the following measures:

- Reorient or relocate the receiving antenna.
- Increase the separation between the equipment and receiver.
- Connect the equipment into an outlet on a circuit different from that to which the receiver is connected.
- Consult the dealer or an experienced radio/TV technician for help.

This device complies with Part 15 of the FCC Rules. Operation is subject to the following two conditions: (1) This device may not cause harmful interference, and (2) this device must accept any interference received, including interference that may cause undesired operation.



European Union Regulatory Notice

Products bearing the CE marking comply with the following EU Directives:

- Low Voltage Directive 2006/95/EC
- EMC Directive 2004/108/EC
- Restriction of the use of certain hazardous substances (RoHS) Directive 2011/65/EU

CE compliance of this product is valid if powered with the correct CE-marked AC adapter provided by Avison.

This product satisfies the Class B limits of EN55022, EN55024, safety requirements of EN 60950 and ROHS requirements of EN50581.

*This machine is certified as Class 1 LED product.

Disposal of Waste Equipment by Users in Private Union



This symbol on the product or on its packaging indicates that the product can not be disposed of with your other household waste. Instead it should be sent to appropriate facilities for recovery and recycling in an effort to protect human health and the environment. For more information about where you can drop off your waste equipment for recycling, please contact your local city office, your household waste disposal service or the shop where you purchased the product.



As an ENERGY STAR® Partner, Avison Inc. has determined that this product meets the ENERGY STAR guidelines for energy efficiency.

System Requirements

- CPU: Intel® Core™ 2 Duo or higher
- Memory: 32 bit: 2 GB
64 bit: 4 GB
- Optical Drive: DVD-ROM Drive
- USB Port: USB port 2.0 (compatible with USB 1.1)
- Compatible Operating System: Microsoft Windows XP(SP3), Windows Vista, Windows 7, Windows 8.x (32-bit/64-bit)

Table of Contents

1.	Introduction.....	1-1
2.	Scanner Installation.....	2-1
2.1	Precaution.....	2-1
2.2	Connecting to Power.....	2-2
2.3	Turning on the Power	2-2
2.4	Installing the Scanner Driver	2-3
2.5	Connecting to Computer	2-4
3.	Completing Your First Scan	3-1
3.1	Loading Your Paper	3-1
3.2	Verifying Your Scanner Installation	3-2
3.3	A Glance of the Scanner Properties Dialog Box	3-6
4.	Using the Scanner Properties Dialog Box ..	4-1
4.1	Buttons on the Scanner Properties Dialog Box ..	4-2
4.2	Showing or Hiding Tabs.....	4-4
4.3	The Image Tab	4-6
4.3.1	The Image Selection Box.....	4-7
4.3.2	Other Image Options	4-11
4.3.3	Scanning color images	4-23
4.3.4	Scanning grayscale images.....	4-23
4.3.5	Scanning B&W images	4-23
4.3.6	Editing Profiles.....	4-24
4.4	The Compression Tab	4-27
4.5	The Color Dropout Tab	4-29
4.5.1	Color Dropout Selection	4-29
4.6	The Paper Tab	4-35
4.6.1	Cropping.....	4-36
4.6.2	Other Paper Selection	4-41
4.7	The Multi-Feed Detection Tab.....	4-48
4.8	The Preview Tab	4-52
4.9	The Enhancement Tab	4-53

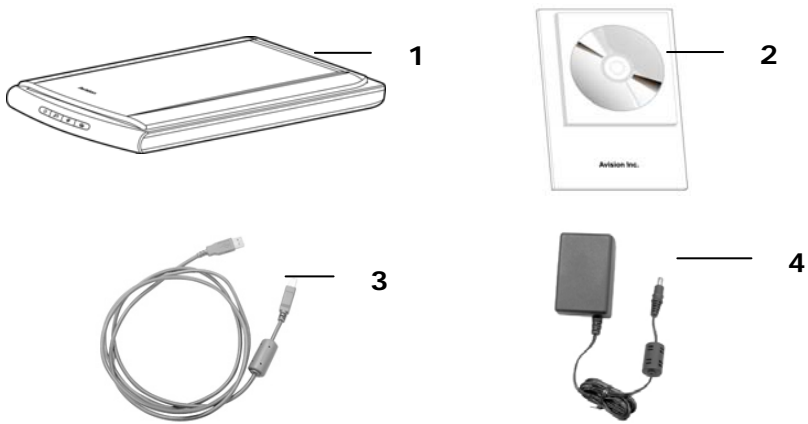
4.10	The Rotation Tab	4-59
4.11	The Separation Tab.....	4-64
4.12	The Setting Tab.....	4-68
4.13	The Imprinter Tab	4-71
4.14	The Information Tab	4-75
5.	Using the Buttons.....	5-1
5.1	Installing Button Manager V2	5-1
5.2	Checking the Button Configurations Before Scanning.....	5-1
5.3	Using the Buttons	5-3
6.	Maintenance.....	6-1
6.1	Cleaning the Glass.....	6-1
7.	Troubleshooting	7-1
7.1	Questions and Answers	7-1
7.2	Technical Service	7-2
8.	Specifications.....	8-1
	Index	a

1. Introduction

Congratulations on your purchase of this scanner. Avison is one of the leading companies to make high quality color image scanner.

Before you install and operate the new scanner, please take a few minutes to read through this manual. It provides proper instructions for you to unpack, install, operate and maintain the scanner.

The following figure indicates the package contents. Please check all the items against your checklist. If you do not receive all the items, please contact your authorized local dealer immediately.



1. Scanner Main Unit
2. Software CD/Quick Guide
3. USB Cable
4. Power Adapter & Power Cord

Note:

1. Only use the AC adapter WA-18H12 by APD included in the machine. Using other AC adapters may damage the machine and void the warranty.
 2. Please unpack the packing carefully, and check the contents against the checklist. If any items are missing or damaged, please contact your dealer immediately.
 3. To access more service supports, visit www.avision.com to register your Avision's product.
-

2. Scanner Installation

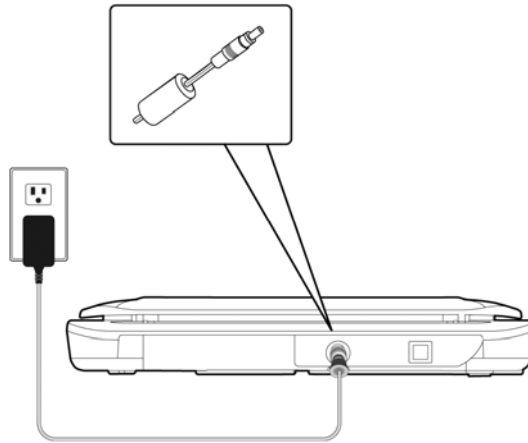
2.1 Precaution

- Keep the scanner out of direct sunlight. Direct exposure to the sun or excessive heat may cause damage to the unit.
- Do not install the scanner in a humid or dusty place.
- Be sure to use the proper AC power source.
- Place the scanner securely on an even, flat surface. Tilted or uneven surfaces may cause mechanical or paper-feeding problems.
- Retain the scanner box and packing materials for shipping purposes.

2.2 Connecting to Power

Before connecting, make sure the power switch is off.

Plug the small end of the power adaptor into the power jack of your scanner. Insert the other end to an appropriate power outlet.



2.3 Turning on the Power

Press the Power button on the front panel, the Power LED will be lit. To turn off the scanner, press the Power button for about 3 seconds, the Power LED will be off.



2.4 Installing the Scanner Driver

NOTE:

- 1). To ensure your computer can identify the USB scanner, please install scanner driver first before connecting the scanner to your computer.
 - 2). The scanner driver contains TWAIN driver. If you are running Windows XP or later, after the installation of scanner driver is completed, this scanner allows you to scan via a TWAIN user interface. Start your TWAIN-compatible image editing software application to select a TWAIN.
-

1. Place the supplied CD-ROM onto your CD-ROM drive.
2. The software installation graphic appears. If not, run **"setup.exe"**.

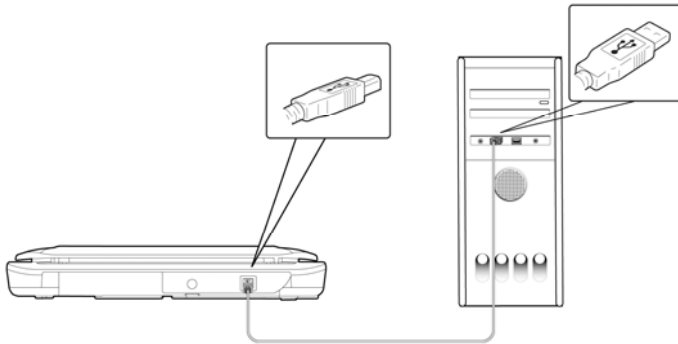


Contents on the installation graphic:

- **Install Scanner Driver:** To communicate with your scanner, you need to install the scanner driver.
 - **Install Button Manager V2:** To use the buttons on the scanner, you need to install Button Manager V2. To ensure Button Manager V2 works properly, please **FIRST** install scanner driver before installing Button Manager V2.
 - **Install Adobe Reader:** To view the user's manuals for the scanner and Button Manager V2, you need to use Adobe Reader to open and view the manuals in pdf file format. If you already have Adobe Reader installed on your computer, you may disregard this item.
 - **Install Dynamsoft Scan:** To scan and detect barcode, you can install the software application to have a few tests.
 - **View Manual:** Click "**View Manual**" to view or print the detailed user manual for the scanner and Button Manager V2 respectively.
3. Click **Install Scanner Driver** to install the scanner driver and then click **Install Button Manager V2** to install the Button Manager V2 onto your computer.

2.5 Connecting to Computer

1. Connect the **square end** of the USB cable to the USB port of your scanner. Connect the **rectangle end** to the USB port of your computer.



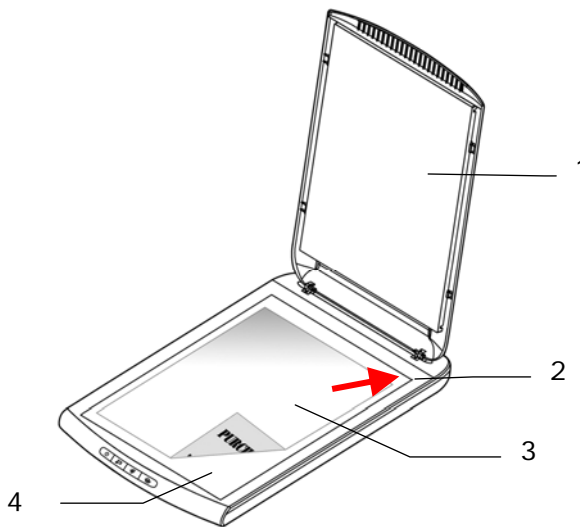
2. The computer should detect a new USB device and prompt a **"New Hardware Found"** message.
3. In Windows XP, click the **Next** button to continue. When the XP certification screen appears, click **Continue Anyway** to complete the installation.
4. When the **Finish** dialog is prompted, click the **Finish** button.

3. Completing Your First Scan

3.1 Loading Your Paper

Open the document cover then place your original **FACE DOWN** on the document glass as shown in Fig. 3-1.

Make sure the top of your original near the document alignment mark.



1. Document cover
2. Document alignment mark
3. Your original
4. Document glass

Figure 3-1 Placing the original

3.2 Verifying Your Scanner Installation

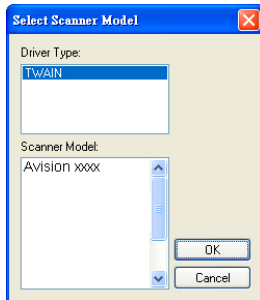
To verify if your scanner installation is correct, Avision provides you a useful test program called Avision Capture Tool. With this tool, you can perform simple scans and view the captured images. In addition, it helps you complete your scan at a rated speed.

The following procedure describes how to verify your scanner installation. If the installation is not correct, please review the preceding section to check if the cable connection and scanner driver have been successfully installed.

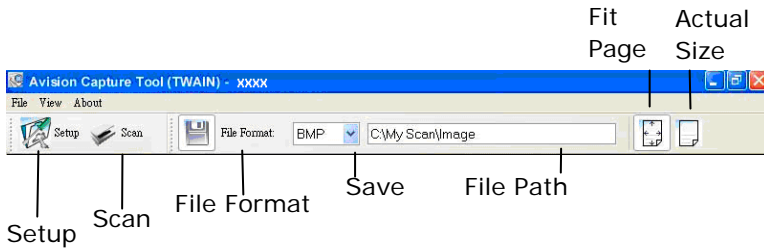
Before you begin, be sure the scanner is on.

1. Select Start>Programs>Avision xxx Scanner>Avision Capture Tool.

The Select Scanner Model dialog box will be displayed.




2. Select your driver type and scanner model and click OK. The following Avision Capture Tool dialog box will be displayed.

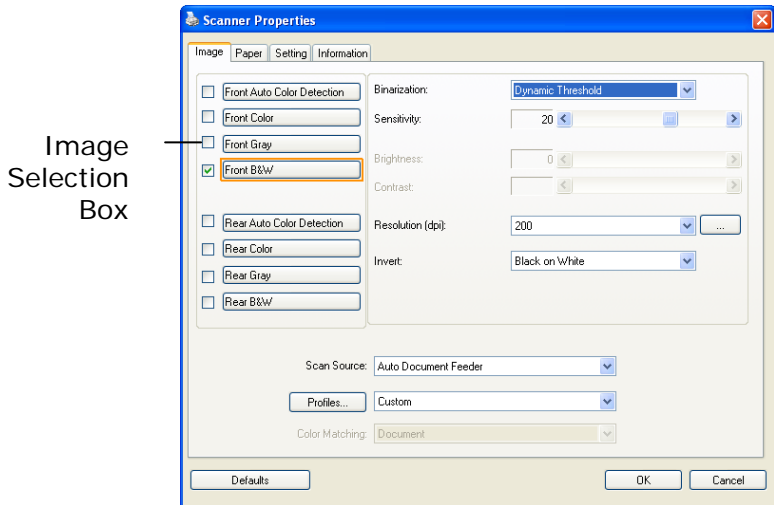


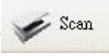
3. Choose your desired file format from the File Format drop down list box. (Default is BMP, other choice includes TIFF, MTIFF, PDF, MPDF, GIF, and JPEG.) The supported file formats vary depending on your scanner model.
4. Type your desired folder name and file name in the File Path box. (Default is C:\My Scan\Image.)

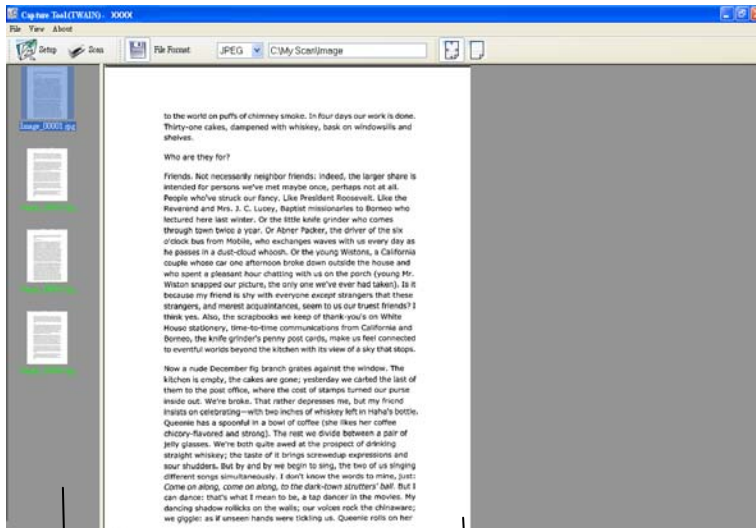
Note:

If you do not wish to save the scanned image, deselect the Save button since default is Save Enable. In this case, the thumbnail view will be disabled. And therefore, after viewing all the scanned images, only the last one will remain on the screen.

5. Click the Setup button () or choose Setup from the File menu to prompt the Scanner Properties dialog box.



6. From the Image Selection Box, choose your desired image type for your scanned image. (Default is Front B&W) If you have a duplex scanner, choose Front and Rear to scan both sides of your document.
7. Click OK to quit the Scanner Properties dialog box. (To learn more details about the Scanner Properties dialog box, please see the subsequent chapter, *Using the Scanner Properties Dialog Box*.)
8. Place your document face down on the document glass or face up in the auto document feeder.
9. In the Scan Validation dialog box, click the Scan button () or choose Scan from the File menu.
10. The document will be scanned and displayed in the Scan Validation screen. After the scanned images have been displayed, your scanner installation verification is completed.



Thumbnail View

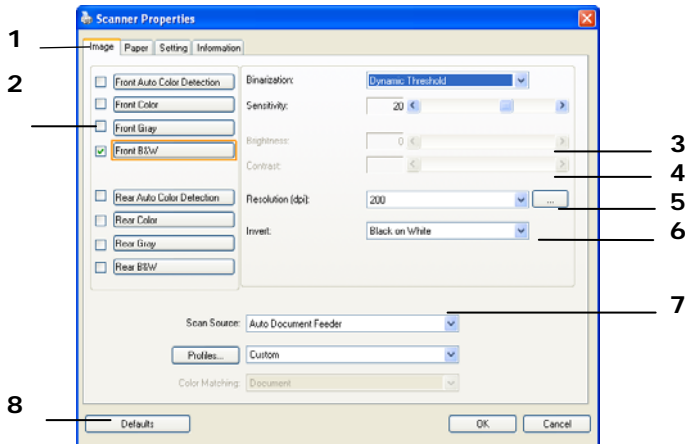
Fit Page View

11. You can view the scanned image in Fit Page () or

Actual Size (100%) button () from the Viewing toolbars at the right side.

12. Click the Close box or Quit from the File menu to exit the Scan Validation Tool.

3.3 A Glance of the Scanner Properties Dialog Box

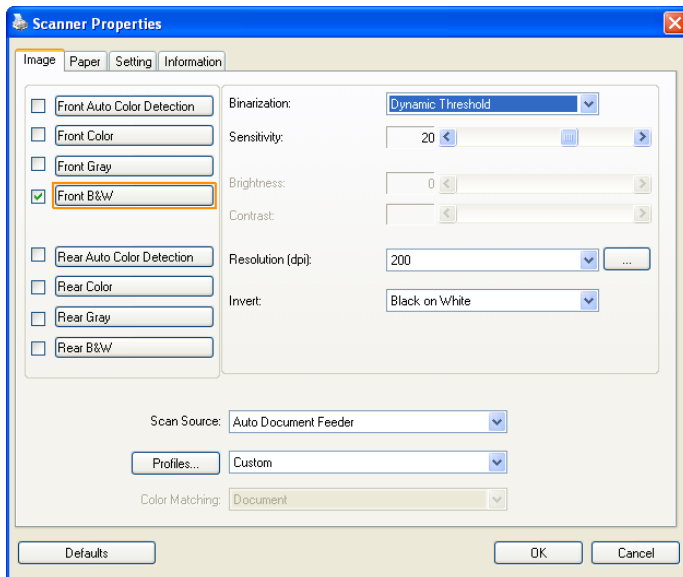


1. Tab Options	Choice: Image, Compression, Color Dropout, Paper, Multi-Feed Detection, Preview, Options, Settings, Information.
2. Image Selection Box	Choose your image type and the side of document you wish to scan. Options vary based on type of scanner.
3. Brightness	Adjust the brightness level from -100 to +100.
4. Contrast	Adjust the contrast level from -100 to +100.
5. Resolution	Determine the quality of the scanned image. The industry standard is 200 dpi.
6. Invert	Reverse the color of your scanned image.
7. Scan Source	Choice: Auto Document Feeder, Flatbed, Flatbed (Book), Automatic (varies due to different scanner model)
8. Defaults	Reset all values on the tabs to the factory default settings.

4. Using the Scanner Properties Properties Dialog Box

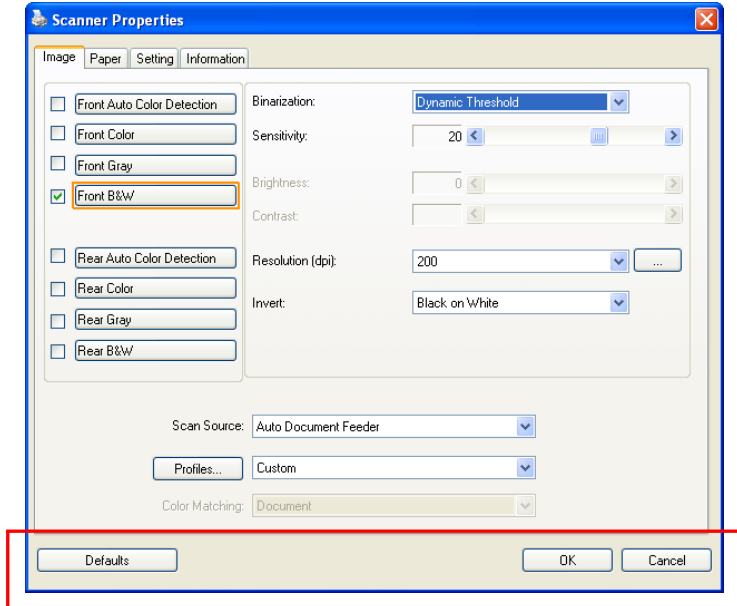
The Scanner Properties dialog box allows you to configure the scanner's settings. It consists of several tabbed windows each of which will be described in this chapter.

Note: In this chapter, all options are available based on a duplex (double-side) scanner. If you have purchased a simplex (single-side) scanner, all options are available for single sided only.



The Scanner Properties dialog box

4.1 Buttons on the Scanner Properties Dialog Box



The buttons on the Scanner Properties dialog box

Buttons	Description
Defaults	Click the Defaults button, the factory default settings will be shown on each tab.
Cancel	Click the Cancel button to leave the Scanner Properties dialog box.


The following table shows the default settings :

Tab name	Default settings
Image	Image : Front B&W Binarization : Dynamic Threshold Resolution : 200 dpi Invert : Blank on White Scan Source : Auto Document Feeder Threshold : None Brightness : None Contrast : None
Compression	None
Color Dropout	None
Paper	Cropping : Automatic Deskew : Yes Orientation : Portrait OverScan : 0.00 Note: The availability of this option varies due to scanner model. Unit : Inch
Multi-Feed Detection	None
Preview	None
Options	Rotation Degrees : None Blank Page Removal : None Edge Fill : White , 0 mm Image Control Option : None
Setting	Enable Energy Saver : Enable, 15 minutes after last scan action Show Scanning Progress : Yes Show Warning Message : Yes Save Settings after Closing : Yes
Imprinter	Digital Imprinter


4.2 Showing or Hiding Tabs

The [**Scanner Properties**] dialog box is displayed in default with three basic tabs - Image, Paper, and Information. To show more tabs, click the [**Scanner Properties**] icon to access more scan settings.

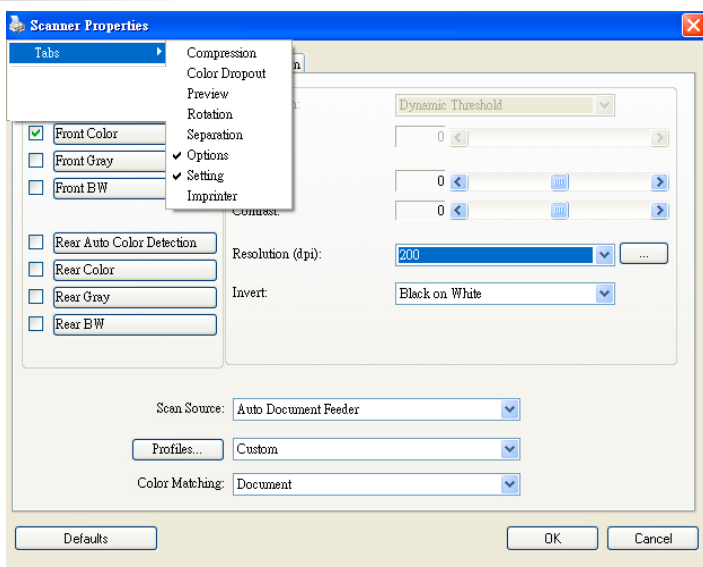
To show more tabs,

1. Click the [**Scanner Properties**] icon () on the upper left corner, and choose [**Tab**] to show available tab names. The available tabs include Compression, Color Drop out, Preview, Rotation, Separation, Multi-Feed, Options, Settings, and Imprinter. (Note: the options vary based on scanner model.)
2. Choose the tab you want to display. The selected tab will be shown with a check mark and then displayed in the [**Scanner Properties**] dialog box.
3. To access the settings, click the selected tab on the top of the [**Scanner Properties**] dialog box. The page of the selected tab will be displayed.

To hide a tab window,

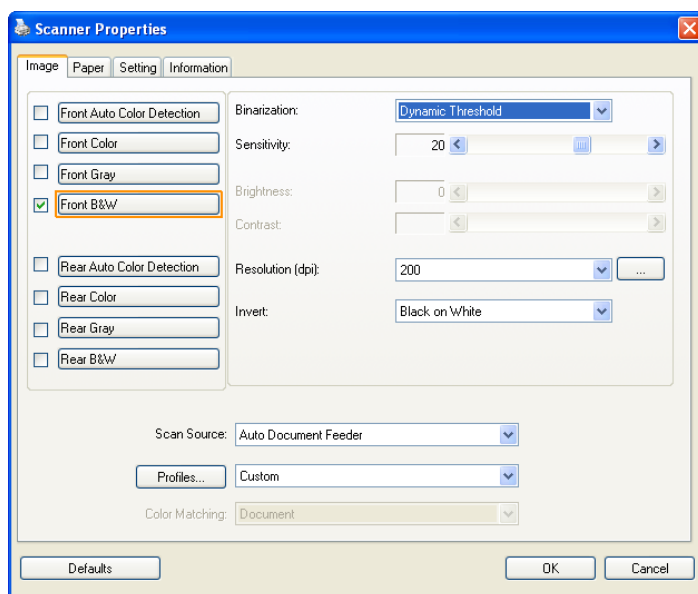
1. Click the [**Scanner Properties**] icon () on the upper left corner, and choose [**Tabs**] to show available tab names.
2. Choose the tab you want to hide. Then, the selected tab will be hid in the [**Scanner Properties**] dialog box.

Note: The [**Image**], [**Paper**], and [**Information**] tab can not be hid since they preprogrammed to be displayed by default.



4.3 The Image Tab

The Image tab allows you to choose the front side and (or) the rear side of your document, the type of image, and to set several basic scan settings. Note that except for the resolution, you can set individual scan settings for the front side and the rear side. For example, all settings in the Image tab, Compression tab, Color Dropout tab can be set individually for the front and the rear side. However, the settings in the Paper tab, the Option tab, and the Setting tab have to be set the same for the front and rear side.



The Image tab dialog box

4.3.1 The Image Selection Box

<input type="checkbox"/>	Front Auto Color Detection
<input checked="" type="checkbox"/>	Front Color
<input type="checkbox"/>	Front Gray
<input type="checkbox"/>	Front B&W
<input type="checkbox"/>	Rear Auto Color Detection
<input checked="" type="checkbox"/>	Rear Color
<input type="checkbox"/>	Rear Gray
<input type="checkbox"/>	Rear B&W

The Image Selection box includes the image type and document side option. If you wish to scan both the front side and the rear side of your color document, you can check both Front Color and Rear Color at the same time. Note the options vary based on type of scanner.

Example 1 : Scanning a two-sided color document, both sides in color

<table border="1"> <tr><td><input type="checkbox"/></td><td>Front Auto Color Detection</td></tr> <tr><td><input checked="" type="checkbox"/></td><td>Front Color</td></tr> <tr><td><input type="checkbox"/></td><td>Front Gray</td></tr> <tr><td><input type="checkbox"/></td><td>Front B&W</td></tr> <tr><td colspan="2"> </td></tr> <tr><td><input type="checkbox"/></td><td>Rear Auto Color Detection</td></tr> <tr><td><input checked="" type="checkbox"/></td><td>Rear Color</td></tr> <tr><td><input type="checkbox"/></td><td>Rear Gray</td></tr> <tr><td><input type="checkbox"/></td><td>Rear B&W</td></tr> </table>	<input type="checkbox"/>	Front Auto Color Detection	<input checked="" type="checkbox"/>	Front Color	<input type="checkbox"/>	Front Gray	<input type="checkbox"/>	Front B&W			<input type="checkbox"/>	Rear Auto Color Detection	<input checked="" type="checkbox"/>	Rear Color	<input type="checkbox"/>	Rear Gray	<input type="checkbox"/>	Rear B&W	<p>Front</p>	<p>Rear</p>
<input type="checkbox"/>	Front Auto Color Detection																			
<input checked="" type="checkbox"/>	Front Color																			
<input type="checkbox"/>	Front Gray																			
<input type="checkbox"/>	Front B&W																			
<input type="checkbox"/>	Rear Auto Color Detection																			
<input checked="" type="checkbox"/>	Rear Color																			
<input type="checkbox"/>	Rear Gray																			
<input type="checkbox"/>	Rear B&W																			
<p>Side/Image Selection</p>	<p>Front</p>	<p>Rear</p>																		

Example 2 : Scanning a two-sided color document, one in B&W, the other in color



<div data-bbox="132 252 331 533"> <input type="checkbox"/> Front Auto Color Detection <input checked="" type="checkbox"/> Front Color <input type="checkbox"/> Front Gray <input type="checkbox"/> Front B&W <input type="checkbox"/> Rear Auto Color Detection <input type="checkbox"/> Rear Color <input type="checkbox"/> Rear Gray <input checked="" type="checkbox"/> Rear B&W </div> <div data-bbox="132 555 311 616"> Side/Image Selection </div>	<div data-bbox="404 252 658 549">  </div> <div data-bbox="409 571 488 596"> Front </div>	<div data-bbox="680 252 957 549">  </div> <div data-bbox="686 571 759 596"> Rear </div>
--------------------------------------------------------------------------------------------------------------------------------------------------------------------------------------------------------------------------------------------------------------------------------------------------------------------------------------------------------------------------------------------------------------------------------------------------------------------------------------------------------------------------	----------------------------------------------------------------------------------------------------------------------------------------------------------------------------------	---------------------------------------------------------------------------------------------------------------------------------------------------------------------------------

Image Type	Description
Color	Choose Color if you wish to scan a color image for your original in color.
Gray	Choose Gray image if your original contains actual shades of gray.
B&W	Choose B&W if your original contains only text, pencil or ink sketch.

to scan
 1. Place the document on the scanner bed.
 2. Press the [Start] button.
 3. Press the [Start] button.
 4. Press the [Start] button.

to scan
 1. Place the document on the scanner bed.
 2. Press the [Start] button.
 3. Press the [Start] button.
 4. Press the [Start] button.

to scan
 1. Place the document on the scanner bed.
 2. Press the [Start] button.
 3. Press the [Start] button.
 4. Press the [Start] button.

to scan
 1. Place the document on the scanner bed.
 2. Press the [Start] button.
 3. Press the [Start] button.
 4. Press the [Start] button.

to scan
 1. Place the document on the scanner bed.
 2. Press the [Start] button.
 3. Press the [Start] button.
 4. Press the [Start] button.

to scan
 1. Place the document on the scanner bed.
 2. Press the [Start] button.
 3. Press the [Start] button.
 4. Press the [Start] button.

to scan
 1. Place the document on the scanner bed.
 2. Press the [Start] button.
 3. Press the [Start] button.
 4. Press the [Start] button.

to scan
 1. Place the document on the scanner bed.
 2. Press the [Start] button.
 3. Press the [Start] button.
 4. Press the [Start] button.

to scan
 1. Place the document on the scanner bed.
 2. Press the [Start] button.
 3. Press the [Start] button.
 4. Press the [Start] button.

B&W

Gray

Color

Front/Rear Auto Color Detection:

Click to automatically detect and scan the front or the rear page of your color document in color image mode. If your document is in colors, the scanner will automatically scan the document into a color image. If your document is non-color, you can choose the output to be either B&W or Gray from the Non-Color Selection option. This option is useful when you have a mixture of color and non-color document.

Note: If you choose Front Rear Auto Color Detection, you can not specify the image mode of your rear page and vice versas.

Sensitivity of Auto Color Detection

If your documents contain primarily B&W text and small amount of light or pale colors and you do not wish them to be recognized as color image to save the file size, you can increase the sensitivity value by moving the bar to the right to let these images to be detected as B&W. The value ranges from 1 to 100. The default is 37.

Standard	IEEE 802.11 b/g/n standards compliant		
Wireless LAN	11n Mode		
Frequency Range	2,400 ~ 2,4835GHz (subject to local regulations)		
	802.11n: 20MHz/40MHz		
Number of Selectable Channels	802.11b/g	USA, Canada (FCC): 11 channels (2.412GHz~2.462GHz)	
		Europe (CE): 13 channels (2.412GHz~2.472GHz)	
		Japan (TELEC): 14 channels (2.412GHz~2.4835GHz)	
Data Rate	802.11n: up to 150Mbps		
	802.11b: 1, 2, 5.5, 11Mbps		
	802.11g: 6, 9, 12, 18, 24, 36, 48, 54Mbps		
Transmit Power(EIRP)	11n HT40 MCS7 : +13 dBm		
	11g OFDM: +15 dBm		
	11b CCK: +18 dBm		
Security	WEP 64/128, TKIP, WPA, WPA2 mixed, 802.1x and 802.11i		

Original

Standard	IEEE 802.11 b/g/n standards compliant		
Wireless LAN	1T1R Mode		
Frequency Range	2,400 ~ 2,4835GHz (subject to local regulations)		
Number of Selectable Channels	802.11n: 20MHz/40MHz		
	USA, Canada (FCC):11 channels (2.412GHz~2.462GHz)		
	802.11b/g: Europe (CE): 13 channels (2.412GHz~2.472GHz)		
Data Rate	Japan (TELEC): 14 channels (2.412GHz~2.4835GHz)		
	802.11n: up to 150Mbps		
	802.11b: 1, 2, 5.5, 11Mbps		
Transmit Power(EIRP)	802.11g: 6, 9, 12, 18, 24, 36, 48, 54Mbps		
	11n HT40 MCS7 : +13 dBm		
	11g OFDM: +15 dBm		
Security	11b CCK: +18 dBm		
	WEP 64/128, TKIP, WPA, WPA2 mixed,802.1x and 802.11i		

Sensitivity: 1
(The image is recognized as a color one)

Standard	IEEE 802.11 b/g/n standards compliant		
Wireless LAN	1T1R Mode		
Frequency Range	2,400 ~ 2,4835GHz (subject to local regulations)		
Number of Selectable Channels	802.11n: 20MHz/40MHz		
	USA, Canada (FCC):11 channels (2.412GHz~2.462GHz)		
	802.11b/g: Europe (CE): 13 channels (2.412GHz~2.472GHz)		
Data Rate	Japan (TELEC): 14 channels (2.412GHz~2.4835GHz)		
	802.11n: up to 150Mbps		
	802.11b: 1, 2, 5.5, 11Mbps		
Transmit Power(EIRP)	802.11g: 6, 9, 12, 18, 24, 36, 48, 54Mbps		
	11n HT40 MCS7 : +13 dBm		
	11g OFDM: +15 dBm		
Security	11b CCK: +18 dBm		
	WEP 64/128, TKIP, WPA, WPA2 mixed,802.1x and 802.11i		

Sensitivity: 100
(The image is recognized as a black and white one)

4.3.2 Other Image Options

Binarization This is the process of converting a grayscale or color image to a bi-tonal image. There are several different methods of performing this conversion.
Options: Dynamic Threshold, Fixed Processing, Halftone 1~5, Error Diffusion.

Dynamic Threshold: Selecting **Dynamic Threshold** allows the scanner to dynamically evaluate each document to determine the optimal threshold value to produce the highest quality image. This is used to scan mixed document containing faint text, shaded background, or color background with a single setting. If Dynamic Threshold is selected, Threshold, Brightness, and Contrast are not available.

Sensitivity of Dynamic Threshold
Occasionally your scanned image may contain small dots or speckles. To remove these spots, increase the sensitivity value by moving the bar to the right. The value ranges from 1 to 30. The default is 20.

Fixed Processing: Used for black-and-white and other high contrast documents. A single level is set to determine the black-and-white transition. The threshold is programmable over the entire density range. **Fixed Processing** sets Contrast to 0. If **Fixed Processing** is selected, Contrast is not available.

Halftone: In addition to the black and white display, Halftone can present a somehow gray shade of image by using different size of dots. Halftone image looks like the picture we have seen in the newspaper. **Options include Halftone 1, Halftone 2, Halftone 3, Halftone 4, Halftone 5.**

Error Diffusion: Error Diffusion is a type of Halftone. Error Diffusion gives good image texture and makes text in images more readable than Halftone.



Halftone Image



Error Diffusion Image

Threshold

Used to convert a grayscale image to a bi-tonal image. The value ranges from 0 to 255. A low threshold value produces a lighter image, and can be used to subdue backgrounds and subtle, unneeded information. A high threshold value produces a darker image, and can be used to help pick up faint images.

Adjust the threshold setting by dragging the Threshold sliding bar to the left or right to achieve the desired threshold setting.



200 dpi,
Threshold:50,
Brightness: 0



200 dpi,
Threshold:100,
Brightness: 0

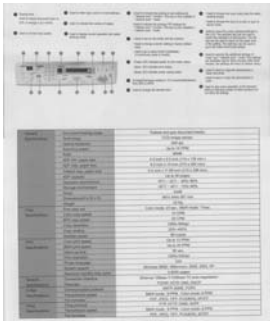
Gray

Document Type: Choice: Normal, Photo, Document

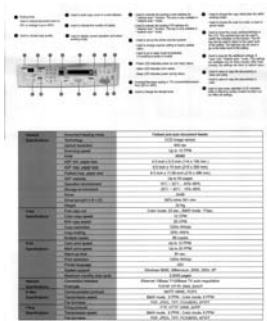
Three options of document type are provided when you choose Gray as the image type for your scanned document. Choice: Normal, Photo, Document.

- **Document:** Choose Document if your original contains pure text or a mixture of text and graphic since it is an optimal setting for regular business document. When using Document, only Threshold can be adjusted.
- **Photo:** Choose Photo if your original contains photo to reproduce your photo in vivid grayscale image. When using Photo, no Threshold and Contrast can be adjusted.
- **Normal:** When using **Normal**, Threshold, Brightness, and Contrast can be adjusted.

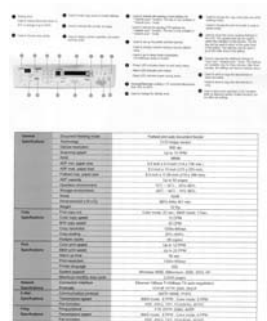
Threshold: The value ranges from 0 to 255. The default is 230. A low threshold value produces a lighter image, and can be used to subdue backgrounds and subtle, unneeded information. A high threshold value produces a darker image, and can be used to help pick up faint images. Adjust the threshold setting by dragging the **Threshold** sliding bar to the left or right to achieve the desired threshold setting.



Normal



Photo



**Document
(Threshold: 230)**



Normal



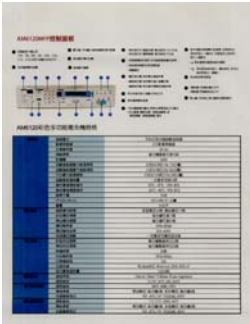
Photo



**Document
(Threshold: 230)**

Brightness Adjusts the lightness or darkness of an image. The higher the value, the brighter the image. Drag the slider to the right or left to increase or decrease the brightness. The range is from -100 to $+100$.

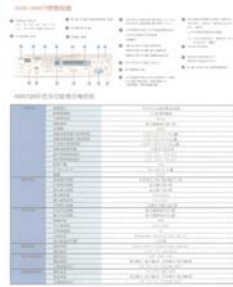
Contrast Adjusts the range between the darkest and the lightest shades in the image. The higher the contrast, the bigger the different grayscale. Drag the slider to the right or left to increase or decrease the contrast. The range is from -100 to $+100$.



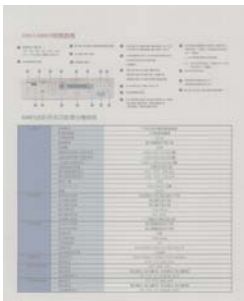
Brightness: -50



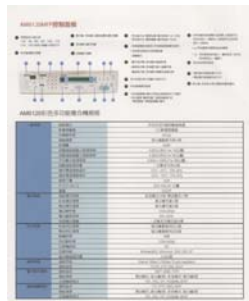
**Brightness: 0
(Normal)**



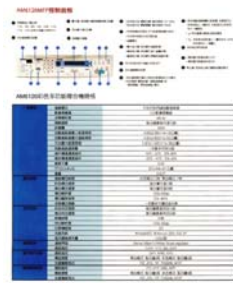
Brightness: +50



Contrast: -50



**Contrast: 0
(Normal)**



Contrast: +50

Resolution

A good control of the resolution results a good detail of an image that scans. The resolution is measured by dots per inch (dpi). Normally, the greater the dpi number, the higher the resolution and the image file size. Be aware that greater resolution takes more time to scan, and more disk space for the scanning image. For your information, an A4 size color image scanned at 300 dpi at True Color mode consumes approximately 25 MB of disk space. A higher resolution (usually means over 600 dpi) is only recommended when you need to scan a small area at True Color mode.

Choose a resolution value from the drop down list. The default value is 200 dpi. Available resolutions are 75, 100, 150, 200, 300, 400 and 600. Or you may choose your desired value by clicking the box in the right side of the drop down list and press the arrow key to select your desired value and then click the Add button to include it in the drop down list. **Note:** The resolution is up to 300 dpi if an imprinter or a MICR reader is installed or connected to the scanner.



Resolution: 75 dpi



Resolution: 150 dpi

Invert Reverses the brightness and the colors in the image. The default setting is Black on a White background. Reverse mode is White on a Black background. For color images, each pixel will be changed into its complementary color at the command of Invert.

"I am not worthy to have you enter my
that is God, I beg all my brothers - those w
e who work manually, clerics and lay brothers
ards being humble in all things; not to glorify
r to become Interiorly proud because of good w
sometimes says or does in them or through tl
ord: "Do not rejoice... in the fact that the de
: 10:20) Let us be firmly convinced of the fact
Black on White

"I am not worthy to have you enter my
that is God, I beg all my brothers - those v
e who work manually, clerics and lay brother
ards being humble in all things; not to glorify
to become Interiorly proud because of good w
sometimes says or does in them or through t
ord: "Do not rejoice... in the fact that the de
(10:20) Let us be firmly convinced of the fac

White on Black

**Scan
Source****Choice:**

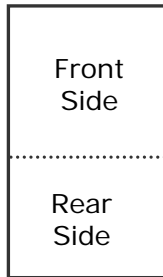
- **Auto Document Feeder:** Used to scan multiple pages.
- **Flatbed:** Used to scan a single page. For example, pages from newspaper clipping, paper with wrinkles or curls.
- **Flatbed (book):** Used to scan several inside pages from book.
- **Automatic:** Allow the scanner automatically set its scan source. If **Automatic** is selected and there is document in both the auto document feeder (ADF) and the flatbed, then the scan source will be automatically set to ADF. If **Automatic** is selected and there is document only in flatbed, then the scan source will be set to flatbed.
- **Merge Two Sides into One Image:**
If you have a sheet-fed duplex scanner with front input tray, you can scan an A3 size document with an innovative method. Thus, fold your A3 size document into A4, and then load the paper in the front tray. Choose Merge Two Sides from the Scan Source option and then the scanner is able to scan both sides of your document and merge two A4 images into one A3 image.

When you select Merge Two Sides into One Image, the Cropping or Multi-feed function will be disabled.

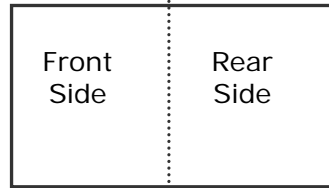
Note: This feature must be used with a carrier sheet. Regarding how to load a document with a Carrier Sheet, refer to Section 4.6.2, Other Paper Selection.

Note the options vary based on type of scanner.

Select the “Merge Vertically” option to merge the front side and the rear side of a page into one image vertically. If the “Merge Vertically” option has not been selected, the front side and the rear side of a page will be merged into one page horizontally.



Merge Vertically



Merge Horizontally

Note the options vary based on type of scanner.

Color Matching

The purpose of Color Matching is getting the accurate color. This option uses the default parameters (ICC profile) to adjust the colors of the image.

Choice: None, Document, Photo

- **None:** Choose "None" to disable this option.
- **Document:** Choose "Document" if your original contains pure text or a mixture of text and graphic since it is an optimal setting for regular business document.
- **Photo:** Choose "Photo" if your original contains photo to reproduce your photo in vivid color image.



Normal



After Color Matching

4.3.3 Scanning color images

The following options are available for scanning color images.

- Brightness
- Contrast
- Resolution
- Invert

4.3.4 Scanning grayscale images

The following options are available for scanning gray images.

- Brightness
- Contrast
- Resolution
- Invert

4.3.5 Scanning B&W images

The following options are available for scanning B&W images.

- Binarization (Dynamic Threshold)
- Resolution
- Invert

Or

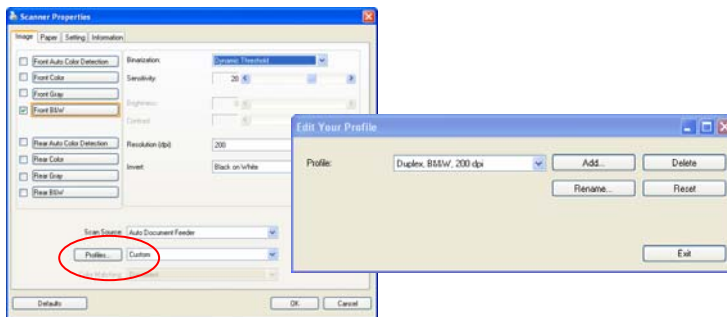
- Binarization (Fix Processing)
- Threshold
- Brightness
- Resolution
- Invert

4.3.6 Editing Profiles

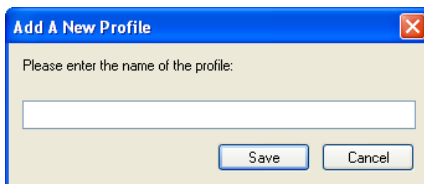
The Scanner Properties dialog box allows you to change and save your frequently used scan settings into a profile. You can edit these profiles by renaming or deleting them.

To add a new profile,

1. Customize your settings. (For example, change your resolution, image type, cropping method, scan size, or other scan settings.)
2. Click the Image tab and then choose "Profiles" to prompt the "Edit Your Profile" dialog box.



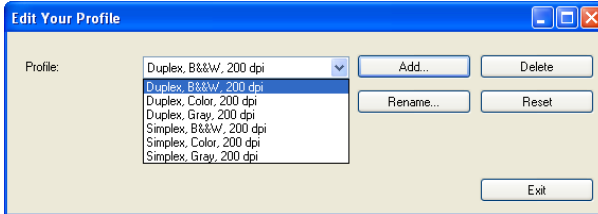
3. Click "Add" to enter the name of the profile and then choose "Save".



4. The new profile will be saved and shown in the "Profiles" dropdown list box.

To load a profile,

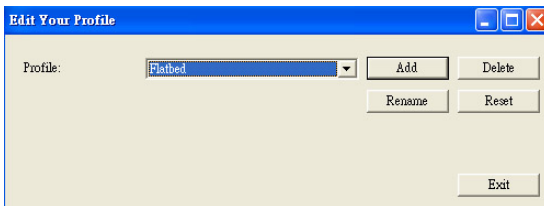
1. From the Image tab dialog box, choose your favorable profile from the "Profiles" dropdown list box.



2. Your favorable profile will be immediately loaded and displayed on Scanner Properties dialog box.

To delete a profile,

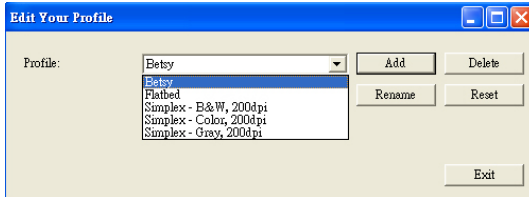
1. From the Image tab dialog box, click "Profiles" to prompt the Edit Your Profile dialog box.



2. Choose the profile you want to delete from the dropdown list box.
3. Click "Delete". A Confirm message "Are you sure you want to delete this profile?" is prompted.
4. Choose "Yes" to delete or "Cancel" to quit.

To rename a profile,

1. From the Image tab dialog box, click “Profiles” to prompt the Edit Your Profile dialog box.



2. Choose the profile you want to rename from the dropdown list box and then click the Rename button.
3. Enter new name for the profile.



4. Choose “Save” to save the new profile or “Cancel” to quit.

Note:

The preset default profiles include Flatbed, Simplex-B&W, 200 dpi, Simplex-Gray, 200 dpi, Simplex-Color, 200 dpi, Duplex-B&W, 200 dpi, Duplex-Gray, 200 dpi, Duplex-Color, 200 dpi. If you have a simplex or a sheetfed scanner, the duplex or the flatbed option will not be available.

4.4 The Compression Tab

The Compression tab allows you to compress your scanned image and choose the level of compression. Bi-tonal images are normally compressed using CCITT standard called Group 4 (G4). Color and grayscale images are often compressed using JPEG technology. Move the **JPEG Quality** slider to the right or left to increase or decrease the level of compression. Note the greater the compression level, the lower image quality. Default is 50%.

Note that the compression depends on your image editing application. If your image editing application does not support the type of compression format, then either a warning message will appear or the image quality of the compressed file will not be acceptable.

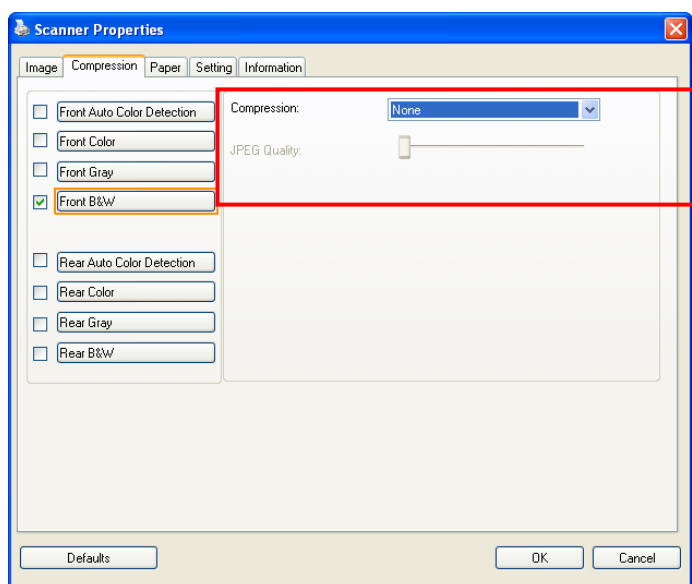
JPEG (Joint Photographic Editor Group). This group developed and lent their name to a file compression standard for color and grayscale images that is widely used by scanners, and software applications. On Microsoft Windows-based systems, a file with the extension .jpg has normally been compressed using this standard.

For scanning color or gray images, the following compressions are available:

- None
- JPEG

For scanning B&W images, the following compressions are available:

- None
- G4



The Compression tab dialog box

4.5 The Color Dropout Tab

4.5.1 Color Dropout Selection

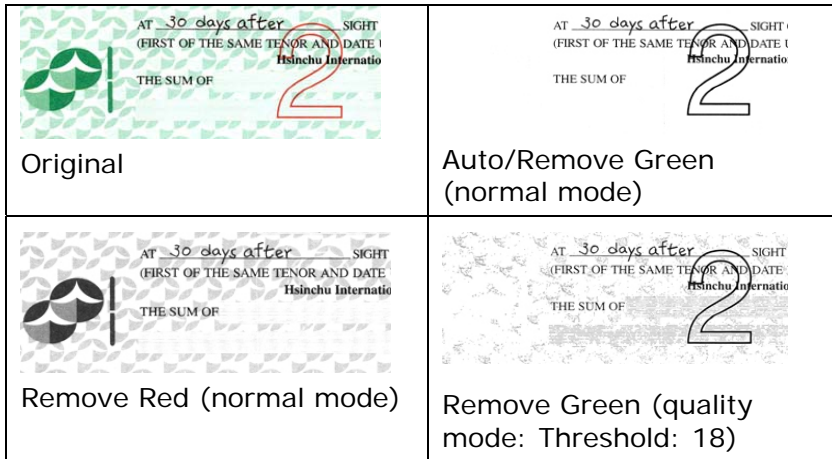
The [**Color Dropout**] tab allows you to select either green, red, blue, or a color of your choice to remove the details of the selected color from a scanned image. This feature is used to sharpen your text when using OCR (Optical Character Recognition) software. Note this feature applies only to the gray or black and white image.

Choice: None, Auto, Remove Red, Remove Green, Remove Blue, Custom

- **None:** Does not remove any color.
- **Auto:** Automatically outputs the image with the details of the primary color removed.
- **Remove Red/Remove Green/Remove Blue:** Outputs the image with the details of the specified color removed.
- **Custom:** Specify the color you wish to remove by entering its RGB (Red, Green, and Blue) value respectively.


Advanced Options:

- **Quality Mode:** Range: 0~20. Default: 10
When [Quality Mode] is selected, you can determine the color to be dropped out using the [Filter Threshold] slider. A lower value will drop more of the selected color out, while a higher value will leave more of the selected color in.
- **Normal Mode:** Use an optimized setting to determine the color.



Preview the color dropout result:

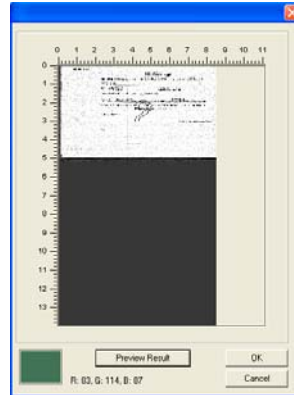
To preview the color dropout result, please follow these steps:

1. Click the [**Scanner Properties**] icon () on the upper left corner, and choose [**Tab**] to show available tab names.
2. Choose [**Preview**] to show the Preview tab.
3. Click the [**Preview**] tab to show the Preview page.
4. Load your document to the scanner and click the [**Preview**] button to get a preview image.
5. On the [Image] tab, click [Gray] or [Black and White] image mode and then choose [Custom] on the [Color Dropout] tab. A [Preview window] button will be displayed.
6. Click the [**Preview window**] button to prompt the [**Preview**] window with the previewed image.

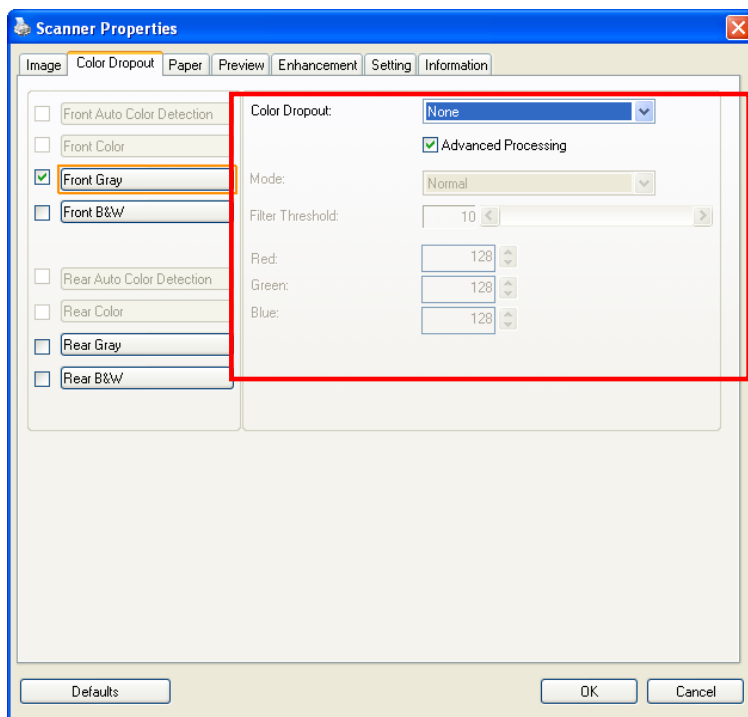
7. Move your cursor over the preview image. Your mouse cursor now becomes an Eyedropper.
8. Click to select a color which you wish to remove.
9. Click and hold your mouse button to view the result after removing the specified color. If the result is satisfactory, click **[OK]** to close the Preview window.



The Preview Window

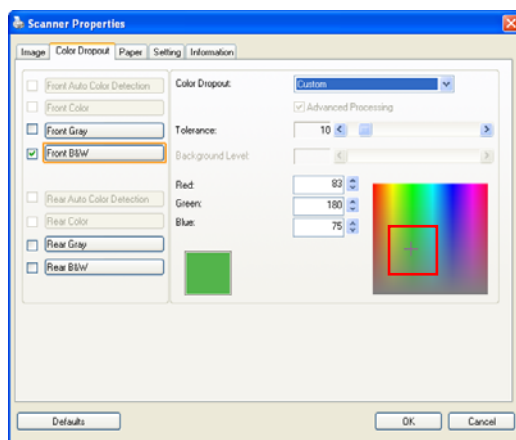


The Color dropout result



The Color Dropout dialog box

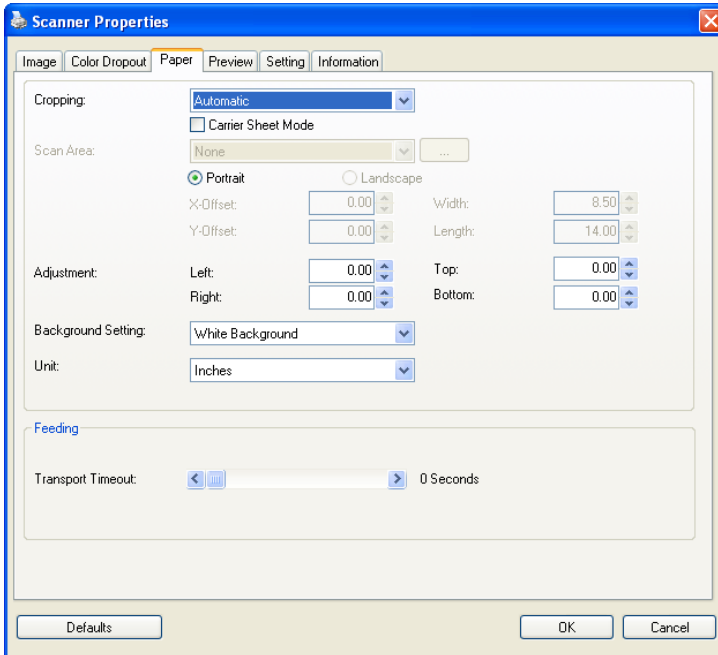
3. Move your cursor over the palette. The cursor becomes a cross sign.



4. Click to choose a color. The RGB values are changed simultaneously.

4.6 The Paper Tab

The Paper tab allows you to define values relating to image output (i.e., Auto Crop or not, Scan Area, OverScan, Multi-Feed Detection).



The Paper tab dialog box

4.6.1 Cropping

Cropping allows you to capture a portion of the document being scanned. **Choice: Automatic, Automatic (36"), Fixed to Transport, EOP (End of Page) Detection, Automatic Multiple, Relative to Documents.**

Options	Description
Automatic	Automatic adjusts the cropping window according to different document sizes and automatically straighten a skewed document. Use this option for batches of mixed-sized documents.
Automatic (36")	Automatically adjusts the cropping window according to different document sizes smaller than 36" and automatically straighten a skewed image. Use this option for batches of mixed-sized document. <i>Note: The availability of this feature varies due to scanner model.</i>
Fixed to Transport	This feature allows you to define the area or zone to be imaged. Use for batches of same-sized documents. If you select this option, you can use the arrow keys to define the x and y offset values, width and length to redefine your scanned area. The Display window will show image placement as you change the values.
EOP (End of Page) Detection	This feature allows you to define the area or zone to be imaged. Use for batches of same-width but different length documents. If you select this option, you can use the arrow keys to define the x and y offset values, width and length to redefine your scanned area. The Display window will show image placement as you change the values.

Automatic Multiple	This option allows you to place various sized documents such as photos, ID Cards, or business cards on the flatbed (if available) and lets you create multiple individually cropped images in one scan. Note: To correctly create multiple images, please make sure there is at least 12mm (0.5") of space between each document.
Relative to Document	This option allows you to crop different areas on your documents and deliver these images in B&W, Gray, or Color separately. For example, there are applications which require you to store the entire document in B&W and a part of the document in color to save storage space. This is useful for documents where a photograph or signature appears in a consistent area on the document such as resumes, and so on.

The following options are only available when **Fixed to Transport** is selected.

- **X-Offset** — the distance from the left end of the scanner to the left edge of the scanning area.
- **Y-Offset** — the position from the top end of the document to the top end of the scanning area.
- **Width** — the width of the scanning area.
- **Length** — the length of the scanning area.
- **Center:** automatically calculates the x-offset for center-fed feeding based upon document size selected.



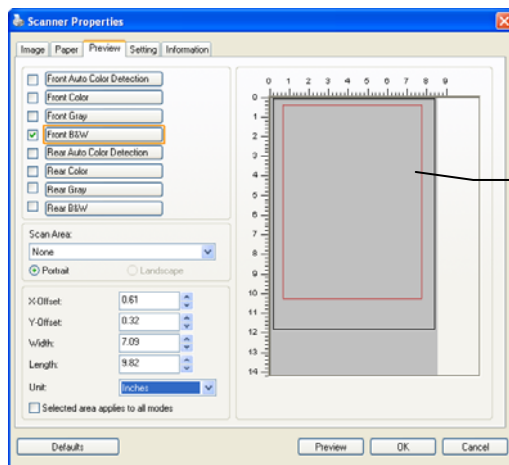
- — relocate the scan area by click the arrow key on the cross sign while retain the scan size. View the result from the Display window.

Relative to Document: (used for batches of same-sized documents)

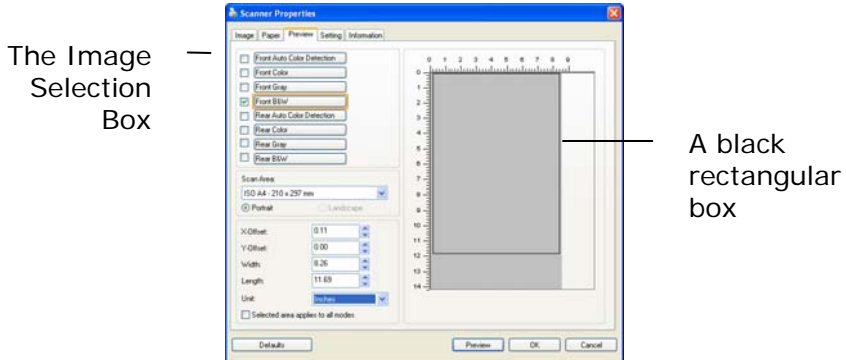
This option allows you to crop different areas on your documents and deliver these images in B&W, Gray, or Color separately. For example, there are applications which require you to store the entire document in B&W and a part of the document in color to save storage space. This is useful for documents where a photograph or signature appears in a consistent area on the document such as resumes, and so on.

The following procedure describes how to reproduce the entire document in B&W and a portion of document (picture) in color.

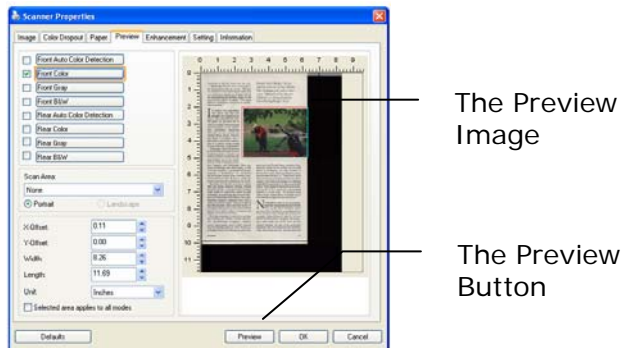
1. On the Paper tab, choose "Relative to Document" or "Fixed to Transport" from the Cropping option.
2. Choose your scan size from the Scan Area option. The selected scan size will be displayed in a red rectangular box. This is also the scan size of your entire document. (For example, ISO B5. If you have not chosen a scan area and leave the selection as None, then the default area will be the scanner's maximum.)



- Click the Preview tab to display the Preview window. A black rectangular box appears to indicate the max. scan size you have just selected.

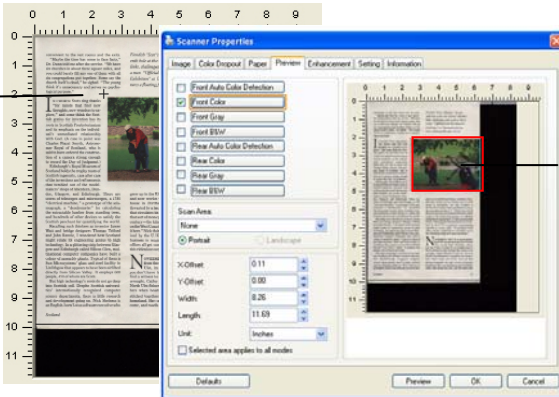


- Click the Preview button to view the entire image in low resolution to correctly crop your relative scan area.



- Select image type from the Image Selection box. The selected image will appear in highlighted color. (For example, Front Color)
- Place your cursor on the Preview window and click your left mouse button. A cross sign will appear as illustrated. Create your relative scan size diagonally by dragging the left mouse button to your preferable size. The selected area will appear in a red box as illustrated.

A Cross
Sign



The
Relative
Area

7. Check the B&W image from the Image Selection box to scan the entire document.
8. Click the Scan button to start scanning the document in two image types and sizes. (See the result in below.)

convenient to the rest rooms and the exits.
"Maybe the time has come to fire bells,"
Dr. Dunn told me after the service. "We have
six churches in about three square miles, and
you could hardly fill any one of them with all
six congregations put together. Some say the
church had to close," he sighed. "The young
folk, I'm sure, necessary and serve no specu-
lative purpose."

*Furukish "Sea's Hounds," the ero-
ticist look at the role of Lady's Macbeth
links, challenges with rough as tall as
a man. "Official Loch Ness Monster
Exhibition" at Drummondschid fun
tunes a floating fibreglass Neale.*

I a church that sing thanks
"for music that had new
thoughts, new wonders to ex-
plore," and more than the Scot-
tish grille for invention has its
roots in Scottish Presbyterianism
and its emphasis on the individ-
ual's commitment relationship
with God. (A case in point was
Charles Fraser Smith, histori-
an Royal of Scotland, who is
also to have ordered the construc-
tion of a canon strong enough
to meet the Day of Judgement.)

Edinburgh's Royal Museum of
Scotland holds the empty room of
Scottish regality, now after cen-
turies of the invasions and refinements
that turned out of the middle-
makers' shops of Aberdeen, Dis-
ney, Glasgow, and Edinburgh. There
are some of telescopes and microscopes, a 17th
"electric machine," a prototype of the mi-
crograph, a "dendrometer" for calculating
the extensible matter from feeding trees,
and hundreds of other devices to satisfy the
Scottish passion for quantifying the world.

Recalling such thinkers as inventor James
Watt and hairy designer Thomas Telford
and John Ruskin, I wondered how Scotland
might relate to engineering giant to high
technology. In a glittering strip between Glas-
gow and Edinburgh called Silicon Glen, and
traditional computer companies have built a
canyon of assembly plants. Typical of them is
Sun Microsystems' glass-and-steel facility in
Loughborough that again is to have been affiliated
directly from Silicon Valley. It employs 600
people, 60% of whom are Irish.

But high technology's roots do not go deep
into Scottish soil. Despite Scottish univer-
sities' internationally recognized computer
science departments, there is little research
and development going on. Nick Sharbois is
an English-born Londoner who recently



grew up in the United States, married a Scot,
and now works via his modem out of a mill
house in Perthshire. He says Scotland is
threatened by a lack of the competitiveness money
that circulates in the U.S. "There was a lot of
that sort of money in Glasgow in the 1950s, but
since the West Coast of the U.S. has become a hot
spot, the kind of dynamism you still find
there," Nick thinks Scotland's economy is con-
tinued by the U.K.'s mafia for concentrating
business in major hubs. "In Scotland most
offices all get tucked down to London out of
the efficiency urge to be near the times."

However, even so, it is much further
from the throne than the side of North
Glas, in the Outer Hebrides, where
you don't have to look for an octagonist to
find a woman to change his century has
weight. Cathy Johnson is only 35, but as a
North Sea fisherman's daughter she remem-
bers when boats and ferries were all that
attached together the line of her perfect
husband. She saw telephones and electricity
come, and roads and cars, and hot water and



Scotland

13

The entire document in B&W

The relative area in color

4.6.2 Other Paper Selection

Carrier Sheet Mode:

Check this option to automatically crop the scan window according to your document size when scanning non-standard document (fragile, irregular-size document) with a carrier sheet (optional). Note: The availability of this option varies due to scanner model.

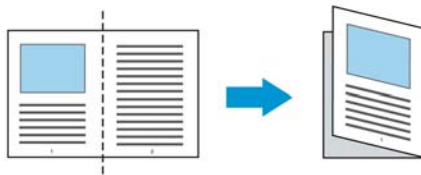
Loading Documents Using a Carrier Sheet

A Carrier Sheet is a plastic sheet specifically used for loading non-standard document onto the scanner. It allows you to scan document that can not be scanned in the regular way. Also, documents larger than A4 size, such as A3 and B4, can be scanned by folding in half, inserting into the Carrier Sheet, and scanning in duplex mode. You can also scan documents that can be damaged quite easily such as photographs, or irregular size documents that are difficult to load directly such as clippings.

To scan document using a Carrier Sheet,

For documents larger than A4/Letter size, such as A3

- a. Fold the sheet to be scanned in half.
- b. Fold the sheet tightly and smooth out crease. Otherwise, the sheet may be skewed during scanning.

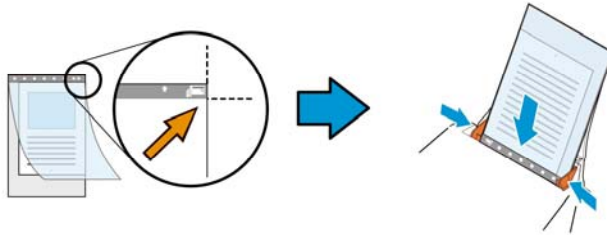


- 1. Open the Carrier Sheet and place the document inside.**

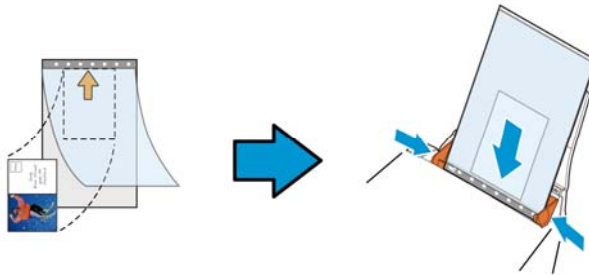
Align the top of the document to the top of the Carrier Sheet (the printed area).

For documents larger than A4/letter size, such as A3

Align the top of the document to the top of the Carrier Sheet (the printed section) and the folded portion to the right edge of the Carrier Sheet so that the document fits into the Carrier Sheet at the upper corner.

**For non-standard document**

Center your document in the Carrier Sheet.



2. Load the Carrier Sheet with the gray section (printed section) facing downwards.
3. Adjust the paper guides to the width of the Carrier Sheet. Adjust the paper guides so that there is no space between the guides and the Carrier sheet. Space between the guides and Carrier Sheet may cause the Carrier Sheet to become unaligned during scanning, and skew the scanned image.
4. Start the scan.

Notice:

- [Carrier Sheet] is available for the models that support the Carrier Sheet.
 - Some functions are disabled when [Carrier Sheet] is checked.
 - This option may not work properly on some applications.
-

Scan Area

Choose your desired paper size with the drop-down list box. Or you may select a custom paper size by clicking the **Scan Area** box and then click **Add** to include in the choice.

Choices are listed below:

None
US Letter- 8.5"x 11"
US Legal – 8.5" x 14"
ISO A4 – 21 x 29.7 cm
ISO A5 – 14.8 x 21 cm
ISO A6 – 10.5 x 14.8cm
ISO A7 – 7.4 x 10/5 cm
ISO B5 – 17.6 x 25 cm
ISO B6 – 12.5 x 17.6 cm
ISO B7 – 8.8 x 12.5 cm
JIS B5 – 18.2 x 25.7 cm
JIS B6 – 12.8 x 18.2 cm
JIS B7 – 9.1 x 12.8 cm
Scanner Maximum
Long Page (<118")

Long Page (<118"):

When you need to scan documents whose length exceeds scanner maximum, please choose **Long Page**. Note if **Long Page** is selected, the **Multi-Feed Detection** will not be available. (Note: This option and the maximum allowable document length vary due to type of scanner.)

When **Long Page (<118")** is selected, be sure to specify your document size in the **Length** and **Width** field.

Notice when scanning long page document:

1. Pull out the extension in the ADF Paper Tray.
 2. Secure enough space around the Output Tray to prevent the ejected paper from falling off the Output Tray.
 3. To ensure the performance, in color mode, set the resolution to be 300 dpi or lower; in Black and White mode, set the resolution to be 600 dpi or lower.
 4. Depending on your system environments, application, or your specified paper size, there may be insufficient memory to perform scanning.
-

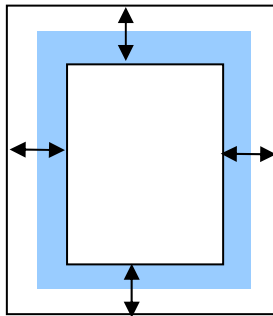
OverScan

Overscan allows you to add a specific margin at top and bottom or right and left (Options vary based on the type of scanner) of the edge of the image. This is used to reduce possible corner clipping on the skewed images and often applied to a batch of skewed document to be scanned in the auto document feeder. Select a value ranging from 0 to +5 mm for Top/Bottom and 0 to 2.8 mm for Left/Right. Note the overscan result will not be shown in the Display window and that the availability of the function and selectable range vary based on type of scanner.

Adjustment

When "Automatic" is selected in the [**Cropping**] option, the **OverScan** option will be replaced by the **Adjustment** option. With the **Adjustment** option, you can specify the scanned image to be slightly extended or cut from the edge of original document if a positive or negative number has been specified.

Top/Bottom/Left/Right: Specify the range to be slightly extended or cut from the top/bottom/left/right edge of document. Available range: from -1 inch to +1 inch.



↔ (range): -1" ~ +1 "

 : original document

Pre-Feed

Choice: Enable, Disable. If enable is selected, you can set the amount of time the scanner starts pre-feeding your paper after your documents has been loaded into the feeder. The default is disable. Note: The availability of this option varies due to scanner model.

Transport Timeout

Set the amount of time the scanner will wait and then start auto scan after the first scan job is completed. If you have many separate documents need to be scanned at the same scan settings, this feature is especially useful. The default is 0. The value ranges from 0 to 30 seconds.

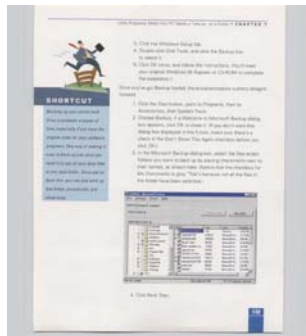
Note:

- 1 Within the specified timeout period, if you load your document to the feeder, the scanner starts scanning automatically.
 - 2 If your scanner has a flatbed option and you place your paper on the flatbed, after the timeout period, you need to click the Scan button on the TWAIN user interface to start scanning.
-

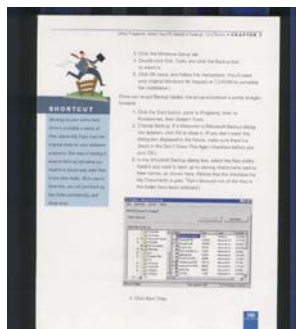
Background Setting

This option allows you to set your scan background. **Choice: White Background, Black Background.**

Note: For a sheet-fed scanner with an auto document feeder, this option is currently available only in the "Auto crop" mode. For a scanner with a flatbed platen, this option is available either in the "Auto crop" or the "Fixed to Transport" mode.



White Background

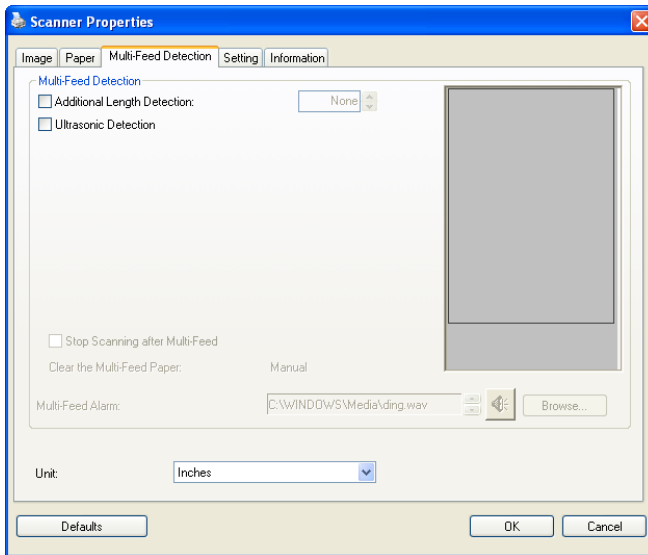


Black Background

4.7 The Multi-Feed Detection Tab

Multi-Feed Detection

Multi-Feed Detection allows you to detect overlapped document that go through the auto document feeder. Multi-Feed usually occurs due to stapled documents, adhesives on documents, or electro-statically charged document. Note : The availability of the function varies based on type of scanner.



Additional Length Detection

Additional Length Detection allows you to define the length of document being multi-fed. This value indicates the additional length exceeding your scan area. The Display window will show the size of the document as you change the value. A value of 0 indicates no additional length detection. The Additional Length Detection is best used when scanning same-size documents in the auto document feeder.

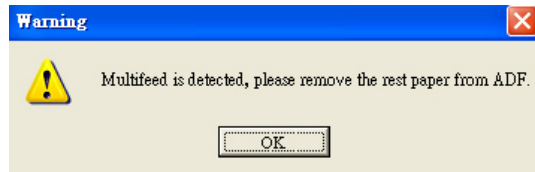
Ultrasonic Detection

Ultrasonic Detection allows you to set overlapped document by detecting paper thickness between documents. Note : The availability of the function varies based on type of scanner.

There are two options available if Multi-Feed is detected.

- **Stop Scanning after Multi-Feed**

If this is selected, the scanner will stop the feeder and display the following Warning dialog box if multi-feed is detected.



Action:

1. Follow the instruction on the Warning dialog box to remove the rest pages on the feeder.
2. Click OK to close the Warning dialog box.
3. Scan the rest pages.

Clear the Multi-Fed Paper: Auto

If this is checked, once multi-feed is detected and scanning operation is stopped, the scanner will automatically clear the transport of the multi-fed paper. If this is not checked, once multi-feed is detected and scanning operation is stopped, you need to manually clear the transport of the multi-fed paper.

Note: The availability of this option varies based on type of scanner.

● Multi-Feed Alarm

If a wave file is added, the scanner will make a sound alarm if multi-feed is detected yet no Warning dialog box will be displayed.

If "Stop Scanning after Multi-Feed" is selected, the scanner will stop the feeder.

If "Stop Scanning after Multi-Feed" has not been selected, the scanner will continue to scan till the end of your document.

Action:

1. If "Stop Scanning after Multi-Feed" is selected, follow the action described in the preceding section "Stop Scanning after Multi-Feed" on the previous page to complete your job.
2. If "Stop Scanning after Multi-Feed" has not been selected, rescan the pages where multi-feed is detected.

How to add the sound alarm :

1. Click the Browse button on the right side of the speaker icon. The Open dialog box appears.
2. Choose your wave file.
3. Click the Open button. The wave file is added.

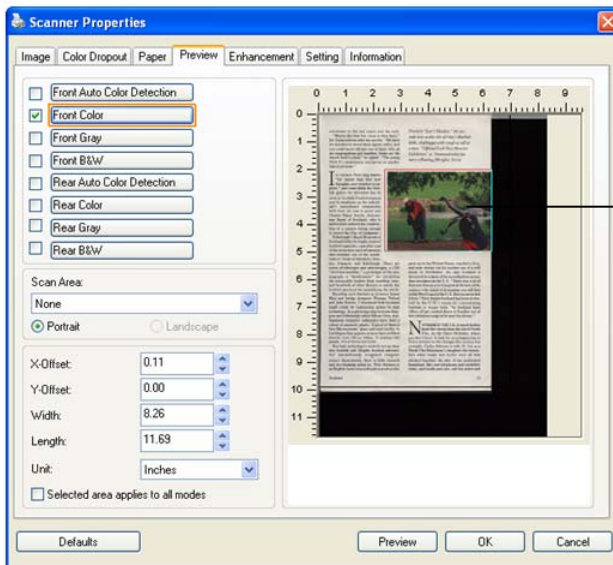
Units

Defines the primary measurement system. **Inches**, **Millimeters**, and **Pixels** are available.

4.8 The Preview Tab

The Preview tab allows you to preview (a low-resolution scan) your image before final scan. This preview image lets you allocate your scan area. You can choose your scan area by the "Scan Area" drop down list box or placing your cursor on the Display window and dragging it diagonally on the Display window. Then, a red rectangle box will appear to indicate the selected area.

Note: If you choose "Automatic Cropping" on the "Paper Tab", then to select a scan area on the Preview tab is not allowed.

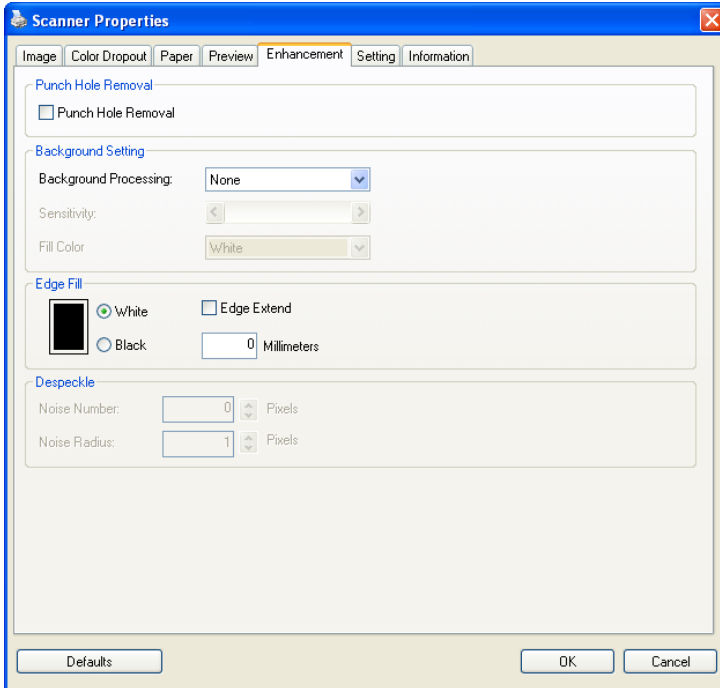


The Display Window

The Preview Tab

4.9 The Enhancement Tab

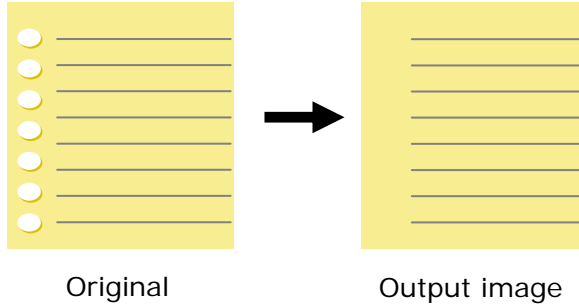
The Enhancement tab allows you to set following additional image processing settings.



The Option tab dialog box

**Punch
Hole
Removal**

You can remove punch holes from the output scanned image when scanning punched document. Note the availability of this feature varies depending on your scanner model.

**Punch holes can not be removed when:**

- Resolution is set lower than 150dpi
- The hole is near the edge of the document
- The holes are not aligned along the edge of the document
- Punch Hole Removal is available only when "Auto Crop" is enabled. If either "Fixed to Transport", "EOP (End of Page) Detection", "Automatic Multiple", "Relative to Documents" is selected from the Cropping option on the Paper tab, the Punch Hole Removal option will be disabled.

Background Processing: The [**Background Processing**] option allows you to smooth background color or remove it to make image clearer. The option is especially useful for documents with color forms such as invoices.

Choices: None (default), Smooth, Removal

- **None** - no background processing will be performed (default)
- **Smooth** - produces images with a more uniform background color. This option improves image quality.
- **Removal** - identifies the background color and then removes it.

Sensitivity: Choice: 0, 1, 2, 3, 4. Default: 0

- The higher the value, the more background color will be kept.

Mode: Auto, Moiré

If [**Smooth**] is selected in the [**Background Processing**] option, then the choices for the [**Mode**] option includes Auto, and Moiré.

- **Auto** - uses the factory preprogrammed mode to proceed background smoothing.
- **Moiré** – Remove the moiré patterns that appear on the background of the image when scanning printed material.

If [**Removal**] is selected in the [**Background Processing**] option, then the [**Mode**] option will be replaced with [**Fill Color**]. Choices: White, Auto.

- **White** - identifies the background color and substitutes it with white.
- **Auto** - identifies the background color and substitutes it with the color of the largest background zone.

FedEx International Air Waybill

Sender's Reference: /0014/0025/00132471802/5

1. Ship To: AVISION INC., SCIENCE BASED INDUSTRY PARK, RD CREATION 3 RD, HSIEN CHU CITY, TW. Phone: 003 578-2388

2. Ship From: Robert Chu, SMC Inc, No. 16, R&D Rd, Tainan, Taiwan R.O.C. Phone: 0928 034 591

3. Package Description: 0918-0435-5285-2913, Dec 2015

4. Tracking Number: 8040 8360 0526

5. Total Weight: 0.402 kg

Background Processing: None

FedEx International Air Waybill

Sender's Reference: /0014/0025/00132471802/5

1. Ship To: AVISION INC., SCIENCE BASED INDUSTRY PARK, RD CREATION 3 RD, HSIEN CHU CITY, TW. Phone: 003 578-2388

2. Ship From: Robert Chu, SMC Inc, No. 16, R&D Rd, Tainan, Taiwan R.O.C. Phone: 0928 034 591

3. Package Description: 0918-0435-5285-2913, Dec 2015

4. Tracking Number: 8040 8360 0526

5. Total Weight: 0.402 kg

Background Processing:
Smooth

FedEx International Air Waybill

Sender's Reference: /0014/0025/00132471802/5

1. Ship To: AVISION INC., SCIENCE BASED INDUSTRY PARK, RD CREATION 3 RD, HSIEN CHU CITY, TW. Phone: 003 578-2388

2. Ship From: Robert Chu, SMC Inc, No. 16, R&D Rd, Tainan, Taiwan R.O.C. Phone: 0928 034 591

3. Package Description: 0918-0435-5285-2913, Dec 2015

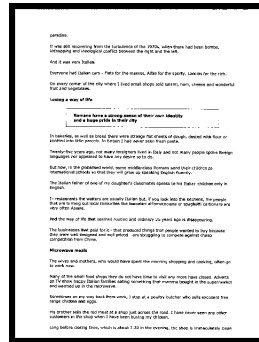
4. Tracking Number: 8040 8360 0526

5. Total Weight: 0.402 kg

Background Processing:
Removal
Fill Color: White

Note: Background color in small zone will not be processed or removed.

Check White or Black if you wish to add white or black edge on the border of your scanned image. Enter the value from 0 to 5 mm. Default value is 0.

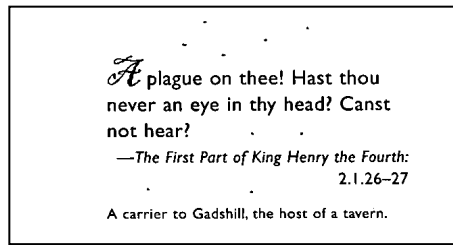


Edge Fill: 5mm (Black)

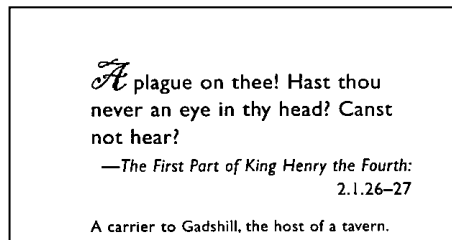
Despeckle

Occasionally small dots or specks appear in the background of a scanned image. Remove unwanted speckles provides a cleaner image for OCR (Optical Character Recognition) processing, and also helps to reduce compressed file size.

Define the speckles (also known as image noise) you wish to remove by specifying its number (size) and radius (range). The measuring unit is pixel. The higher the number, the more speckles will be removed.



Before Despeckle
(noise number: 0, noise radius: 1)



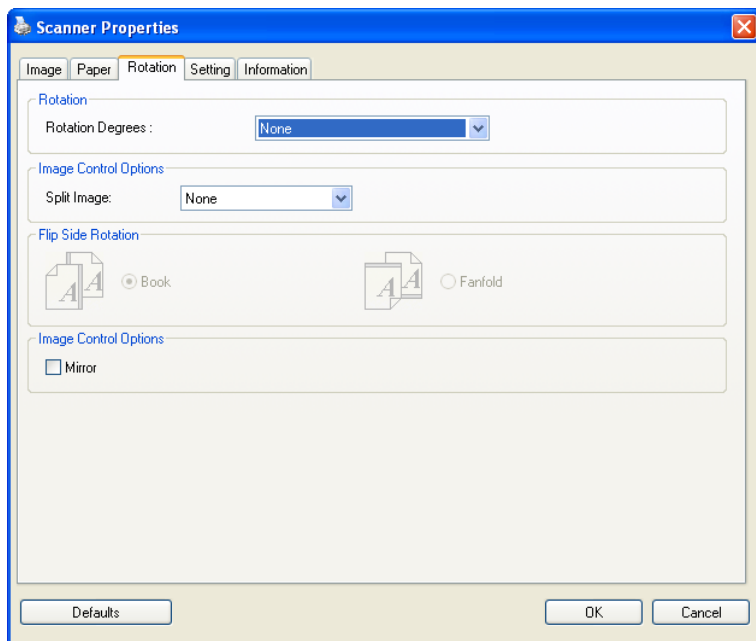
After Despeckle
(noise number: 22, noise radius: 10)

Note:

- The function is currently available for Black and White image only.
 - To scan at rated speed, it is recommended to set the noise radius up to 10 pixels.
-

4.10 The Rotation Tab

The Rotation tab allows you to set the following image rotating options:



Rotate Image

Choose the rotation angle from the drop down list if you wish to rotate your scanned image.

Choice: None, 90° CW(clockwise), 90° CCW(counter clockwise), 180°, Auto based on contents. Auto rotate every even page.

1 2 3

Original

1
2
3

Rotate 90° CW

1
2
3

Rotate 90° CCW

1 2 3

Rotate 180°

Auto based on contents: When **Auto based on contents** is selected, images can be rotated to their proper orientations based on their contents.

Auto rotate every even page:

Automatically rotate 180° on every even page. This is especially useful when you scan the inside pages from a book. As a result, if you choose "Flatbed (book)" from the "Scan Source" option, "auto rotate every even page" will be selected as default.

Note: This option varies based on type of scanner.

**Split
Image**

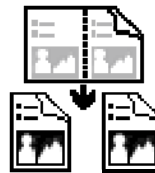
By splitting an image, two separate images are created horizontally or vertically. This is useful for documents containing two pages per image when you want to save them as two images (one page for one image). **Choice: None, Horizontal, Vertical.** Default is None.

Horizontal: Divide one image into the upper half and the lower half.

Vertical: Divide one image into the left half and the right half.



Split Horizontally



Split Vertical

Flip Side Rotation

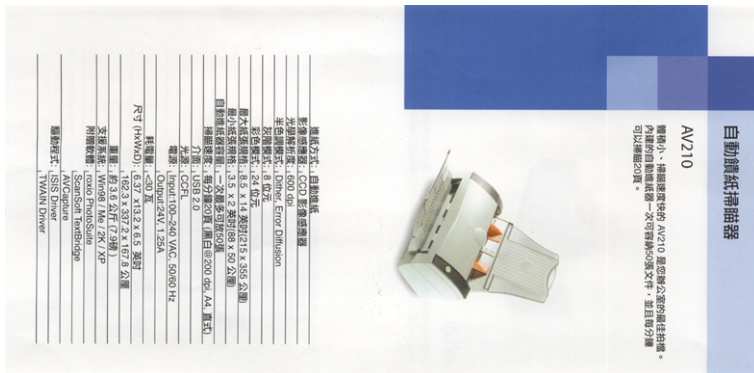
Select "fanfold" to rotate the image of the reverse side to 180 degrees.

This is applied to double-sided document which are viewed in portrait are sometime fed into the scanner in landscape or vice versa.

Choice: Book, Fanfold.

If "Book" is selected, the image of the reverse side will not be rotated.

The following illustration shows the documents which should be viewed in portrait are fed into the scanner in landscape



**Image
Control
Option**

Check the Mirror box if you wish to reverse the right and left side of your image.



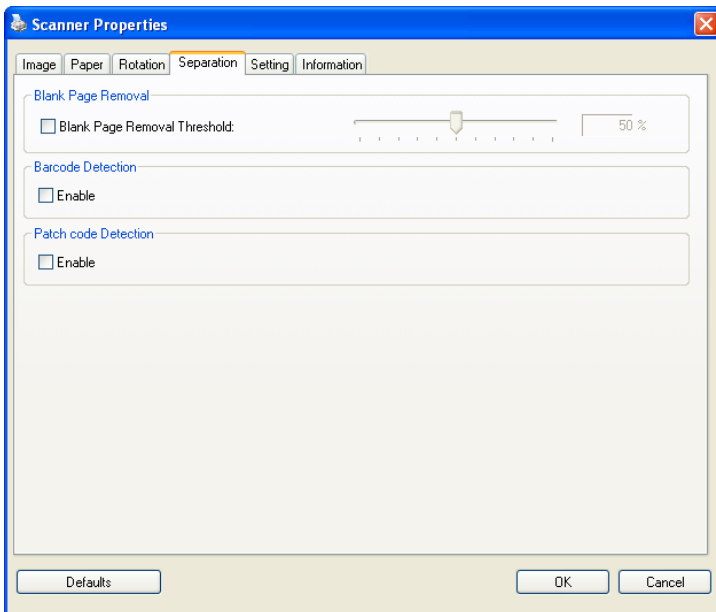
Original



The Mirror Effect

4.11 The Separation Tab

The Separation tab allows you to enable the detection engine to detect the blank page, barcode, and patch code and then notify the software application which supports document separation to separate your multi-page documents. Choices: Blank Page Removal, Barcode Detection, Patch Code Detection.



Blank Page Removal

Check if you wish to remove the blank page and move the slider to the left or right to your desired threshold.

When the bar code has been detected successfully , a file [avbarcode.ini] will be created and stored in the following path:

Windows XP: C:\Documents and Settings\All Users\Application Data\%PRODUCTNAME%

Vista, Windows 7, Windows 8:
C:\ProgramData\%PRODUCTNAME%

Barcode Detection:

Check [**Enable**] to detect barcode and notify the software application for advanced processing. Please note the whole document will be checked and no specific detection area needs to be designated.

Click the [**Select Barcode Types**] button to select the barcode types you wish to detect.

Barcode Types:

The following barcode types can be detected.

One-dimensional barcodes:

- Code 39
- Code 93
- Code 128
- EAN-8
- EAN-13
- ITF (Interleaved 2 of 5)
- UPC-A
- Codabar
- GS1 DataBar (formerly RSS-14)

Two-dimensional codes

- Aztec
- DataMatrix
- MaxiCode
- QR Code
- PDF417 (MicroPDF417 not supported)

Note:

- Recommended resolution: 200~600 dpi for regular barcode, 300~600 dpi for QR code
 - Skewed barcodes may not be recognized correctly.
 - Using the same sheet repeatedly may decrease the recognition accuracy due to accumulated dirt on the sheets. If the sheet is not recognized correctly or gets smudged, replace it with a new sheet.
-

Patch code Detection:

Check [**Enable**] to detect patch codes and notify the software application for advanced processing.

A patch code is a pattern of parallel, alternating black bars and spaces (i.e. a barcode) that is printed on a document. Patch code sheet is most commonly used as a document separator in a stack of document.

You can find various sizes of patch codes (PDF) by choosing [**Start**] menu>[**All Programs**]>[**Avision Scanner Series**]>[**Patch code**] in succession.

Simply print the PDF file to produce the patch code sheet. Insert the patch code sheets to wherever you want the file to separate.



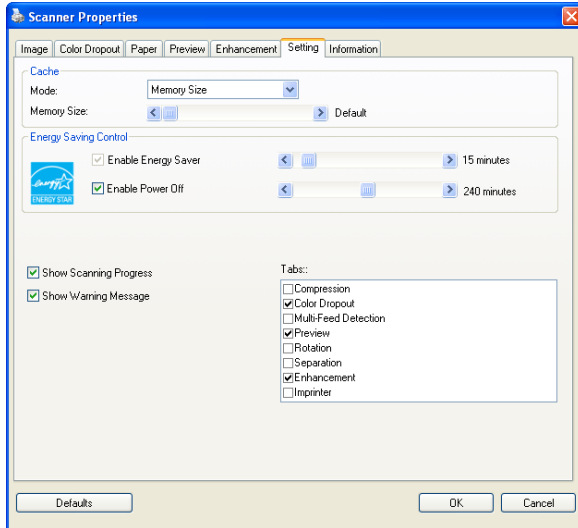
Patch code sheet

Notes to print the patch codes:

- Use blank white paper.
 - Set the scaling to 100%. The sheet is not recognized correctly when printed in a size smaller than the original.
 - Do not use toner saving mode. The sheet is not recognized correctly when the print is too light.
 - Do not use thin paper in order to avoid bleed-through from the back.
 - When you copy a patch code sheet that you printed out, make sure to copy by the same size and brightness as the original copy.
 - Use the same sheet repeatedly may decrease the recognition accuracy due to accumulated dirt on the sheets. If the sheet is not recognized correctly or gets smudged, replace it with a new sheet.
-

4.12 The Setting Tab

The Setting tab allows you to set the following settings:



The Setting tab dialog box

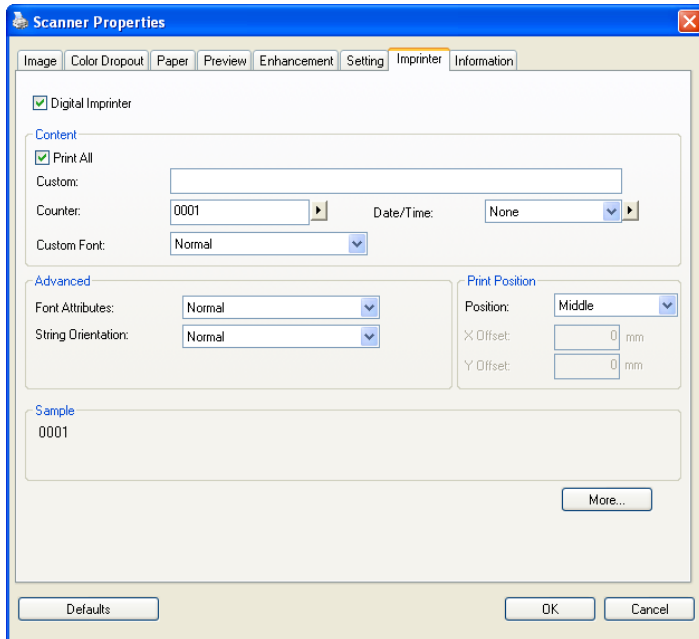
Energy Saving Control	Check the Enable Energy Saver box and move the slider to set the amount of time to start the energy saver after your last action. The range is from 1 to 242 minutes. The default value is 15 minutes.
Enable Power Off	Check the Enable Power Off box and move the slider to set the amount of time to automatically turn off the scanner after your last action. The range is from 1 to 480 minutes. The default is 242 minutes (4 hours). Note the value of "Power Off" has to be greater than or equal to the value of "Energy Saving".

Cache	<p>Mode: None, Page Number, Memory Size.</p> <p>This option allows you to assign a specified memory size from the available RAM to process the image data. By specifying a smaller memory size, you can free more memory for other applications you are running. By specifying a larger memory size, you can have more memory to process the image data especially when you have a large amount of documents needed to be scanned.</p> <p>You can also specify your memory size by the page number. For your information, an A4 color document scanning at 300 dpi consumes approximates 24MB.</p> <p>Image Count</p> <p>When the selected cache mode is “none”, the image count option allows you to assign number of pages you need to scan. For example, if you wish to scan the first two pages, simply move the page slider to 2, and the scan action will be stopped when the scanning of the first two pages have been completed.</p>
--------------	------------------------------------------------------------------------------------------------------------------------------------------------------------------------------------------------------------------------------------------------------------------------------------------------------------------------------------------------------------------------------------------------------------------------------------------------------------------------------------------------------------------------------------------------------------------------------------------------------------------------------------------------------------------------------------------------------------------------------------------------------------------------------------------------------------------------------------------------------------------------------------------------------------------------------------------------------------

Show Scanning Progress	Check and the scanning progress bar will be shown during scanning.
Show Warning Message	Check to show the warning messages such as "ADF pad count exceeds 50,000 scans (the number varies based on type of scanner). Please replace the ADF pad and reset the pad count."
Save Settings after Closing	Check to save your scanner properties settings after leaving the dialog box. Next time when you open the Scanner Properties dialog box, the previously saved settings will be shown.

4.13 The Imprinter Tab

The Imprinter tab allows you to print alphanumeric characters, date, time, document count and custom message on your scanned image if digital imprinter is selected or at the back of your document if external imprinter is selected.



Choice: External Imprinter, Digital Imprinter. If you have installed an external imprinter, choose external imprinter. If you do not have an imprinter, choose digital imprinter. Note External Imprinter provides a vertical and rear-side print capability while digital printer provides a horizontal and front-side print capability.

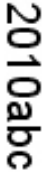
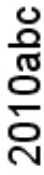
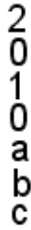

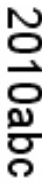
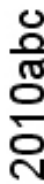
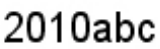
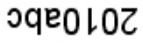
Contents

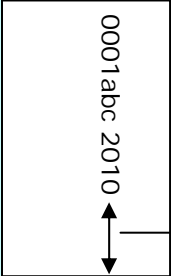
Print All	Check Print All to automatically print the text at all pages of your documents. Uncheck Print All to print the text for the first page of your documents only.
Custom	Enter your custom text to be included in your print string.
Counter	Show the document count for the scan session. This value is increased sequentially by the scanner.

Date/Time	Choose if you wish to include the date and time in your print string. Format: YYYYMMDDHHSS For example, 20090402170645-check0001 indicates year, month, date, hour, seconds, your custom text and the counter.
Custom Font	Choose your desired font. Choice: Normal, Fixed Width Fixed Width (Mono spaced) fonts have a fixed character spacing. So each character occupies the same width.

Advanced

Font Attributes	Choose your font attributes. Choice: Normal, Underline, Double, and Bold.
------------------------	----------------------------------------------------------------------------------

String Orientation	Choose your string orientation. Choice: Normal, Rotated, Vertical, Vertical Inversion, 90 degrees CW, 90 degrees CCW	
	 Normal	 Rotated
	 Vertical	 Vertical Inversion
	 90 degrees CW	 90 degrees CCW
	If you check the digital imprinter to stamp text on your scanned image, the illustration of normal and rotated string is shown below:	
	 Normal	 Rotated

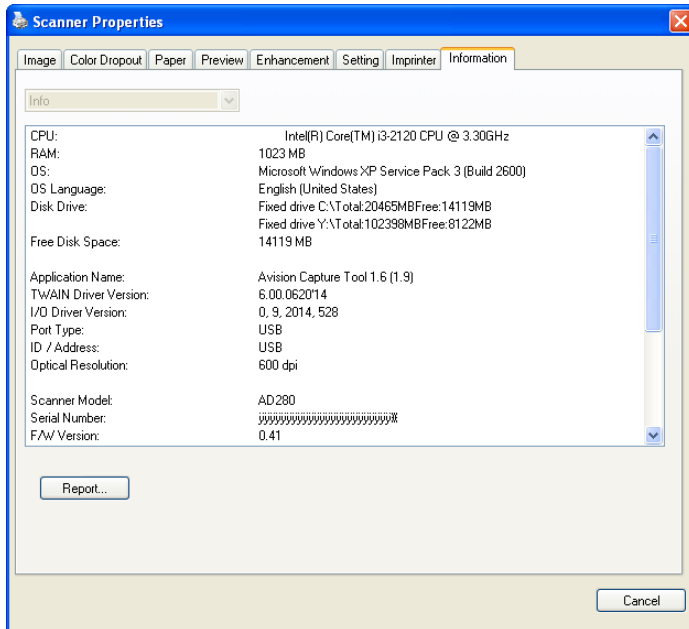
Print Position	<p>Choose the position you wish to print your string. Move the slider to the right to increase the value or to the left to decrease the value. Range: 0~355mm, default:0 mm</p> <p>The value indicates the height from the bottom of your paper to the last letter of your string. This option is available only if an external imprinter is installed.</p>  <p>The value of Print Position</p>
-----------------------	----------------------------------------------------------------------------------------------------------------------------------------------------------------------------------------------------------------------------------------------------------------------------------------------------------------------------------------------------------------------------------------------------------------------------------------------------------------------------------

Print Position (for digital imprinter)

Choose the position of your printed string. **Choice: Top, Middle, Bottom, Custom.** If Custom is selected, enter the X and Y offset value to specify the position.

4.14 The Information Tab

The Information tab displays the following system and scanner information.



The Information tab dialog box

The “Report” button :

If you encounter any error message while using the scanner, click the Report button. A report.txt file [Windows XP: C:\Documents and Settings\All Users\Application Data\%PRODUCTNAME%; Vista, Windows 7, Windows 8: C:\ProgramData\%PRODUCTNAME% (C: system drive)] will be generated. Please send this file to the nearest service center for trouble shooting.

5. Using the Buttons

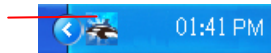
5.1 Installing Button Manager V2

Button Manager V2 provides you an easy way to scan your document and then link the scanned image to your designated software application. All this can be done by a simple touch of the button on the scanner. Yet, before you scan, it is recommended to check the button configurations first to ensure a proper file format and a destination application.

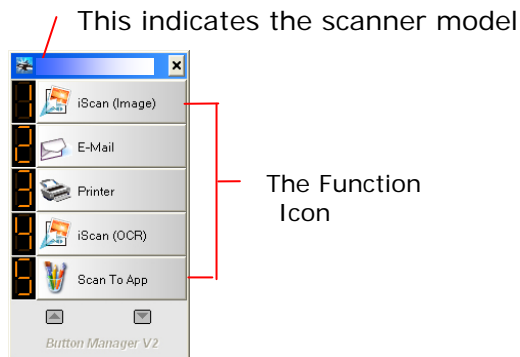
5.2 Checking the Button Configurations Before Scanning

1. Button Manager V2 runs from the system tray. After Button Manager V2 and the scanner driver are properly installed, Button Manager V2 is started and the Button icon will be displayed in the system tray.

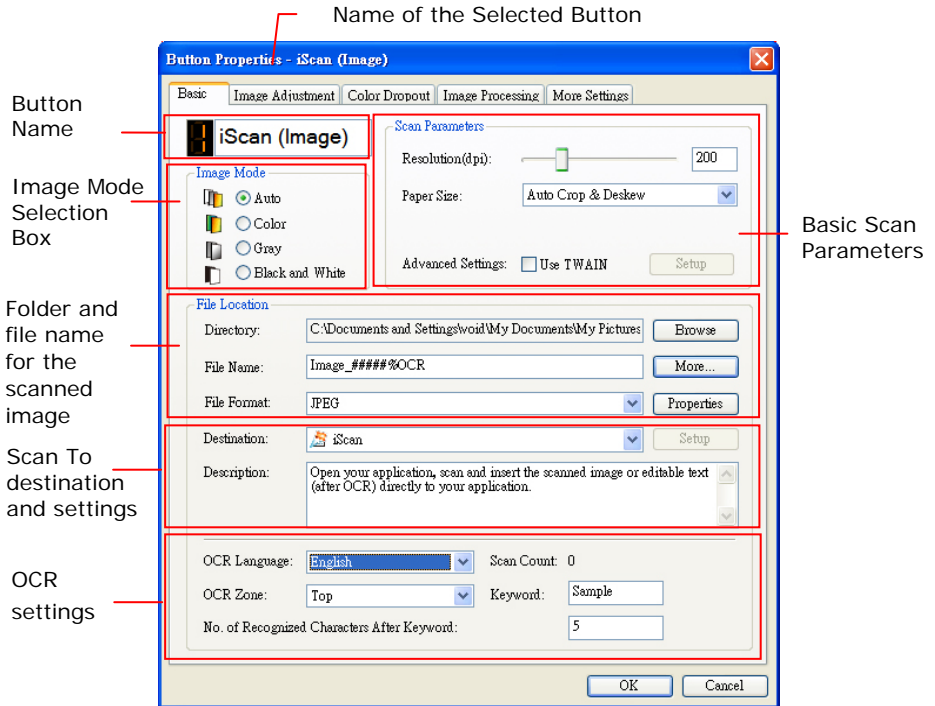
The Button
Icon



2. Left-click the Button Manager V2 icon to prompt the following Button Panel.



- The Button Panel shows the first three scanning buttons. Right-click the button (function) you wish to check. The Button Properties window appears.

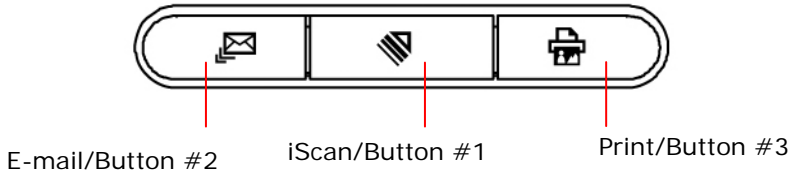


If you wish to change the setting, use this window to reset the setting for the file format, destination application, or other scan settings. See "Configuring the Button" in the subsequent section to reset the settings.

- Click the OK button to leave the window.

Note: If the Button Panel has not been displayed in the Windows System Tray after restarting your computer, please just turn off and on your scanner. The Button icon will then be displayed on the Windows System Tray.

5.3 Using the Buttons



1. Press the button you desire.

iScan/Button #1:

Scan a document and insert the scanned image to your application which is already launched and your mouse cursor has just clicked.

E-mail/Button #2:

Scan a document and send the image from your default e-mail software to an e-mail recipient as an attachment.

Print/Button #3:

Scan a document and print it from your default printer.

2. The status bar will display to indicate the progress of your task.

Note:

For details information on how to use the Button Manager V2 V2, please refer to the user's manual in the supplied CD.

6. Maintenance

6.1 Cleaning the Glass

The procedures

- 1) Use a clean and lint-free cloth wet with isopropyl alcohol. (95%)
- 2) Open the document cover as shown in Figure 6-1. Wipe the document glass.
- 3) Close the document cover. Your scanner is now ready for use.

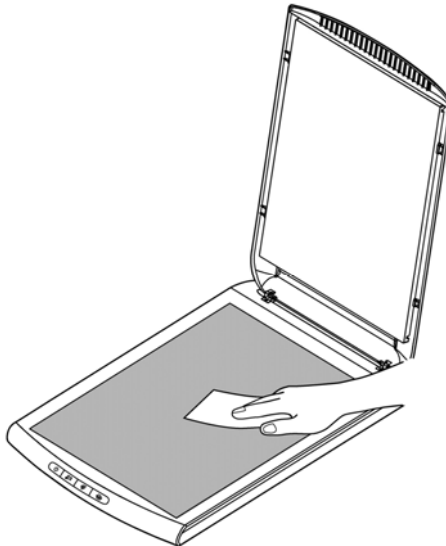


Figure 6-1 Cleaning the Glass

7. Troubleshooting

7.1 Questions and Answers

Question:	Why is it that the scanned image always comes out to be too dark?
Answer:	1) Please adjust the screen settings to SRGB. 2) Please adjust the brightness settings on the screen from application software.

Question:	When I choose optical resolution to be 600 dpi, the "auto crop" and "deskew" functions will be disabled.
Answer:	Since to perform auto crop and deskew consumes great deal of system memory, it is suggested if you wish to perform "auto crop" and "deskew" functions, please choose your optical resolution to be smaller than 600 dpi to prevent an error message.

7.2 Technical Service

Before contacting Avision, please prepare the following information by referring to Section 4.14, The Information Tab:

- Scanner serial & revision number (located on the bottom of the scanner);
- Hardware configuration (e.g., your host CPU type, RAM size, free disk space, display card, interface card);
- The name and version of your scanning software application;
- The version of your scanner driver.

Please call us at:

Headquarter

Avision Inc.

No. 20, Creation Road I, Science-Based Industrial Park,
Hsinchu 300, Taiwan, ROC

TEL: +886 (3) 578-2388

FAX: +886 (3) 577-7017

E-MAIL: service@avision.com.tw

Web Site: <http://www.avision.com.tw>

US and Canada Area

Avision Labs, Inc.

6815 Mowry Ave., Newark CA 94560, USA

TEL: +1 (510) 739-2369

FAX: +1 (510) 739-6060

E-MAIL: support@avision-labs.com

Web Site: <http://www.avision.com>

China Area

Hongcai Technology Limited

7A, No. 1010, Kaixuan Road, Shanghai 200052 P.R.C.

TEL : +86-21-62816680

FAX : +86-21-62818856

E-MAIL : sales@avision.net.cn

Web Site: <http://www.avision.com.cn>

Europe Area

Avision Europe GmbH

Bischofstr. 101 D-47809 Krefeld Germany

TEL: +49-2151-56981-40

FAX: +49-2151-56981-42

E-MAIL: info@avision-europe.com

Web Site: <http://www.avision.de>

Espaço Brasil

Avision Brasil Ltda.

Avenida Jabaquara, 2958 – Cj. 75 – Mirandópolis

São Paulo / SP

TEL: +55-11-2737-6062

E-MAIL: suporte@avision.com.br

Web Site: <http://www.avision.com.br>

8. Specifications

All specifications are subject to change without notice. For the most up-to-date and detailed specifications, please refer to our web site at <http://www.avision.com>

Model Number	FB1200+
Scanner Type	Flatbed
Scanning Mode	Color/Grey/Black & White
Optical Resolution	1200 dpi
Light Source	LED
Maximum Scanning Size	216 x 297 mm (8.5 x 11.7 in.)
Interface	High Speed USB 2.0
Power Requirement	12Vdc , 1,25A
Power Consumption	< 11 watts (operation) < 6 watts (standby) < 2.9 watts (sleep)
Humidity	10~85% RH
Operation Temperature	10°C ~ 35°C
Dimension (WxDxH)	260 x 410 x 43 mm (10.2 x 10.1 x 1.7 in.)
Weight	1.5 kg (3.3 lb.)

Index

- Additional Length Detection, 4-51
- alignment mark, 3-1
- Auto Color Detection**
 - sensitivity, 4-10
- B&W, 4-9
- Background Setting, 4-49**
- Binarization**
 - Dynamic Threshold, Fixed Processing, 4-12
- Blank Page Removal, 4-68**
- Brightness, 4-18**
- Button Panel, 5-1
- Button Properties window, 5-2
- Cache**
 - None, Page Number, Memory Size, 4-73
- Color, 4-9**
- Color Dropout
 - Remove Red, Remove Green, Remove Blue, Custom, 4-30
- Color Matching, 4-23**
- Contrast, 4-18**
- Cropping
 - Automatic, Fix to Transport, EOP Detection, 4-37
- Custom Font**
 - Normal, Fixed Width, 4-76
- default settings, 4-3
- Despeckle, 4-61**
 - Noise Number, Noise Radius, 4-61
- Document Type**
 - Normal, Photo, Document, 4-16
- Dynamic Threshold**
 - sensitivity, 4-12
- Edge Fill, 4-60**
- E-mail, 5-3**
- Enable Power Off, 4-72**
- Energy Saving, 4-72**
- Fixed Width, 4-76**
- Flip Side Rotation, 4-66**
- Font Attributes**
 - Normal, Underline, Double, Bold, 4-76
- G4, 4-28
- Gray, 4-9, 4-16
- Invert, 4-20**
- iScan, 5-3**
- JPEG, 4-28
- Mirror, 4-67
- Multi-Feed Detection, 4-50**
- OverScan, 4-46**
- Print, 5-3**
 - Print All, 4-76
- Print Position, 4-78**
- Punch Hole Removal, 4-57**
- Resolution, 4-19**
- Rotate Image, 4-64**
- Scan Area, 4-45**
- Split Image**
 - None, Horizontal, Vertical, 4-65
- String Orientation**
 - Normal, Rotated, Vertical, Vertical Inversion, 90 deg CW, 90 deg CCW, 4-77
- Transport Timeout, 4-48**
 - Ultrasonic Detection, 4-51