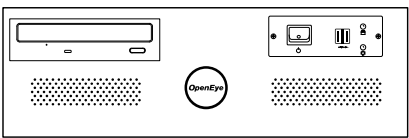







ABOUT THIS GUIDE

This quick operation guide is a quick reference for users to install and operate the R-Series and only provides basic information on settings and operation. Before attempting to connect, configure and operate your R-Series Remote Client Workstation, please read the user manual thoroughly.

BOX CONTENTS

 <p>RADIUS PC</p>	
 <p>KEYBOARD</p>	 <p>MOUSE</p>
 <p>REPAIR DISC / SOFTWARE DISC</p>	 <p>POWER CABLE</p>
 <p>HDMI to DVI-D ADAPTER (2 included in 4 port model)</p>	

POWER

WARNING:

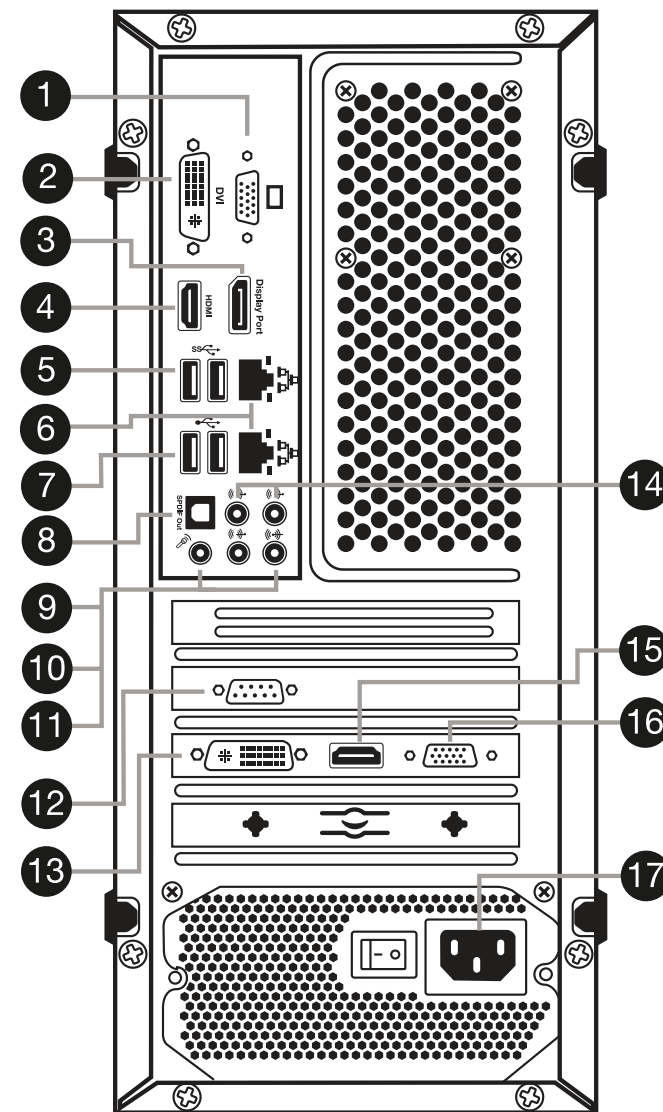
To reduce the risk of electrical shock or damage to the equipment

- Do not disable the power grounding plug. The grounding plug is an important safety feature.
- If the electrical plug you are using does not have a ground plug receptacle, contact a licensed electrician to have it replaced with a grounded electrical outlet.
- Plug the power cord into a grounded electrical outlet that is easily accessible at all times.
- Disconnect the power from the computer by unplugging the power cord either from the electrical outlet or from the computer.



23221 E Knox Ave
Liberty Lake, WA 99019
1.888.542.1103

CONNECTIONS (OE-RWST2 Model Shown)



No.	Item	No.	Item
1	VGA	10	Speaker out
2	DVI-D	11	Line in - Line level
3	Display port	12	RS-232
4	HDMI	13	DVI-I
5	USB 2.0	14	5.1 Surround sound
6	Network	15	HDMI
7	USB 3.0	16	VGA
8	Optical Output	17	Power
9	Mic in - Not used		

LOGGING IN FOR THE FIRST TIME

Use the default User ID and password for your initial login. After logging in for the first time, change the admin password for the recorder and remote software to establish user level security. See the Manual for instructions.

User ID: administrator
Password: <none>

CONNECTING MULTIPLE MONITORS

- Connect the monitors to the appropriate ports. For four-port models, you can connect up to two monitors to the video card for a maximum of four monitors.
- Right-click the Desktop and then click **Screen Resolution**.
- Drag the icons for your monitors into the desired positions. If all of your monitors are not displayed, click **Detect**. If you need help determining the number assigned to each monitor, click **Identify** and the number will display on the monitor.
- In the **Multiple Displays** field, select **Extend these displays**.
- Select the appropriate resolution for each monitor by selecting the monitor icon, and then selecting the **Resolution**.
- When configuring the primary monitor, select the **Make this my main display** check box.

CONNECTING TO A RECORDER

Refer to the video recorder manual for instructions on configuring the recorder for use with the RADIUS software.

Viewing Video

- Locate the recorder in the **Connection** list. If it is not visible, click the plus sign (+) next to the **DVR Group** name to expand the file tree.
- Double-click the desired recorder icon, or right-click the icon, and select **Connect**.
- Click the plus sign next (+) to the recorder icon to display the connected camera icons.
- Double-click the camera you want to view, or drag the camera icon onto a box on the **Live Display** screen.

Moving Cameras

To change the position of a camera on the Live Display Screen, click on the displayed video and drag to a new box.

Remove a Camera

To remove a camera from the Live Display Screen, right-click the displayed video and select **Close**.

- or -

Right-click the camera icon in the **Connection** list and select **Close Live**.

ADDING A NEW RECORDER

- On the Live screen, click **Menu**, and then click **Settings**.
- Click **DVR List Setup**.
- Select the recorder model type from the **Model** list.
- Type a name to identify the recorder in the **Server Name** field.
- Type the IP Address of the recorder in the **IP / URL** field.
- Select the **Port** the recorder uses to transfer data. The port is specified in the **Network Setup** display on the recorder.
- Type the **User ID** and **Password** of an authorized remote user. This is the same information used by the recorder.
- Type the name of a new group in the **Group** box, or click the arrow to select a previously created group.
- When you are finished, click **Add**, and then click **Save and Close**.

EDITING A RECORDER

- On the Live screen, click **Menu**, and then click **Settings**.
- Click **DVR List Setup**.
- Select the recorder to edit from the list.
- Edit the necessary information.
- When you have finished editing, click **Update**.
- When you are finished editing all of your recorders, click **Save and Close**.

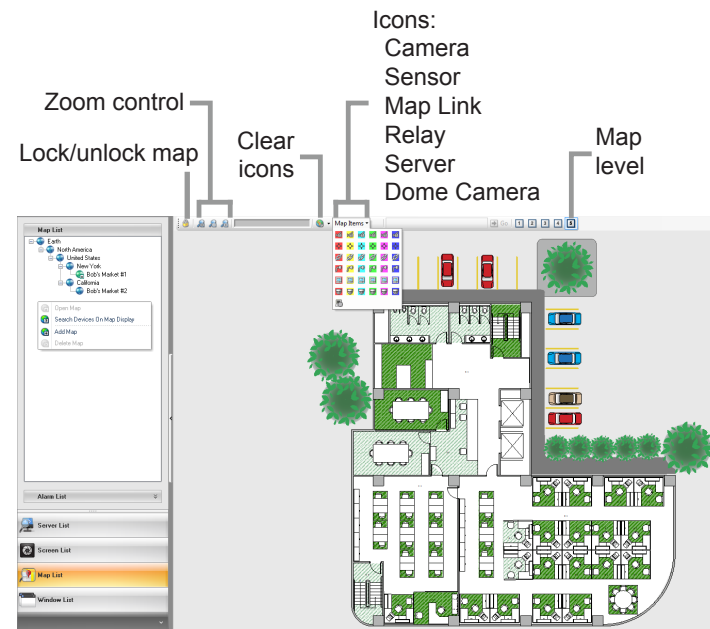
CREATING CUSTOM SCREENS

RADIUS software allows you to create groups of cameras called screens and customize the organization of the cameras. These screens can be selected from the Screen list. Each screen can contain up to 64 different cameras, and the Screen Division buttons will affect only the selected screen. Screen names and configurations will not be available unless Auto Load Settings (on Log on) and Auto Save Settings (on Log off) options are selected on the General settings screen.

- Add cameras to the Live Display.
- Select the desired screen division option.
- Click **Screen List** in the shortcut list.
- Right-click in the Screen list, and then click **Add Group**.
- Type a name to identify the group.

Tip You must create or select a group before adding a new screen.
- Right-click the group name and select **Add User Screen**.
- Type a name to identify the screen.

MAP SCREEN OVERVIEW



ADDING A MAP FILE

RADIUS software is capable of importing maps and associating cameras and sensors to locations on the map, as well as linking maps together. Import as many maps as necessary. Maps are listed in the Map List in the order that they are added.

1. Click the **Map List** on the shortcut menu.
2. Right-click the **Map List**, and then click **Add Map**.
3. Type a **New Map Name**. Use a name that will make the map easy to identify..
4. Click **Find** to browse for the map file.
5. Select the file. Supported file types include:
 - Auto CAD files (up to R14) - DFX, DWG.
 - Standard image files - JPG, BMP, EMF, WMF.
6. Type any additional information you want to include with the map display in the **Comment** field.
7. Click **OK** to add the map.

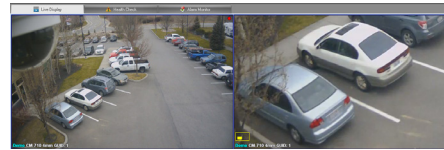
OPENING A MAP

Right-click the map name on the Map List and select **Open Map**.

- or -

Double-click the map name.

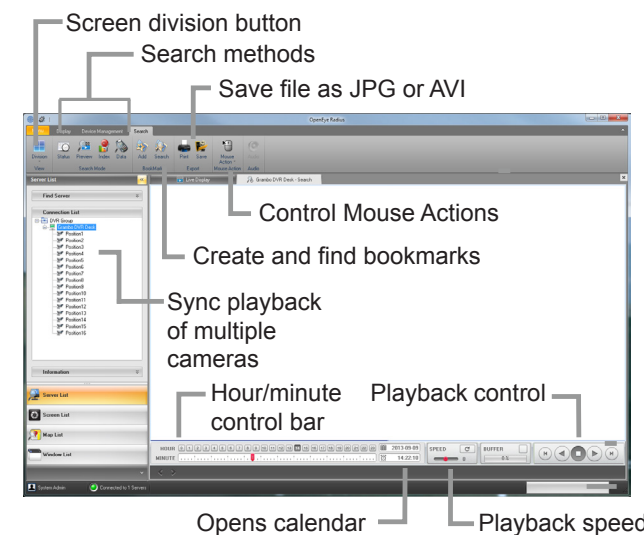
USING DIGITAL ZOOM TO CREATE HOT SPOTS



You can use the Digital Zoom function to see multiple detailed close-ups from a single camera at the same time.

1. In the Server List, click the camera you want to use and drag it into as many windows as you want views.
2. Right-click the Live screen, click **Mouse Action**, and then click **Digital Zoom**.
3. Click one of the camera windows.
4. Scroll your mouse to zoom in or out, and click and drag to select the appropriate portion of the camera image.
5. To control the **Digital Zoom** on another camera window, click the window.
6. When you have completed setting your screens, right-click the mouse, click **Mouse Action**, and then click **Move** to reset your mouse to normal function.

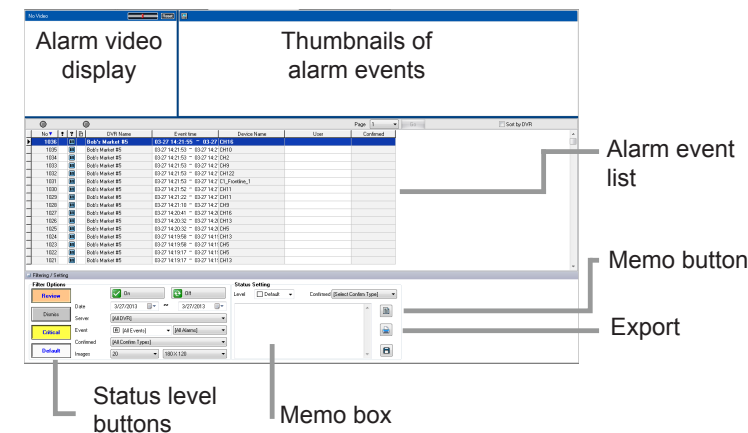
SEARCH OVERVIEW



BASIC SEARCH

1. Right-click a recorder or camera in the Server List and select **Search**.
2. Click the **Calendar** button and select a time and date. Dates with recorded video are indicated with a red circle.
3. Select the time using the **Hour/Minute** control bar.
4. Select cameras by dragging them from the **Connection List** into the display field.
5. Start playback using the playback controls.

ALARM MONITOR WINDOW



ALARM MONITOR

Use the Alarm Monitor to view alarms from your connected recorders. Double-click an alarm entry to view the associated recorder, camera, and time related to the event.

Set Up Alarm Monitor Options

1. On the Live screen, click **Menu**, and then click **Settings**.
2. Click **Alarm Monitor**.
3. Select **Use** to enable Alarm Monitor options.
4. Type the **Network Port** number.
5. Select **Change to Alarm Monitor on Alarm** to bring the Alarm Monitor application to the front on an alarm.
6. Select **Show Popup Messenger** to show a small popup message on alarm.
7. Select a sound option for alarm events.
8. Add items to the **Alarm Confirm List**.

Enable Alarm Monitor

1. On the Live screen, click **Menu**, and then click **Settings**.
2. Click **Alarm Monitor**.
3. Select **Use** to enable the Alarm Monitor.

Note The Alarm Monitor uses one port to transfer the data (the Emergency Port). The port can be adjusted inside the Network settings if necessary. Use the default setting unless the port must be changed.

4. Click **Save and Close**.

Configure Your Recorder

For the Alarm Monitor to work, you must have configured your recorder to transmit alarm information to RADIUS. To configure your recorder using RADIUS, right-click the recorder in the Server List, and then click **Device Configuration**.

- For Professional Recorders, go to **Recording Schedule > Alarm Option**.
- For E-Series recorders, go to **Record > Motion/Event Setup > Alarm Monitor**.

BACKUP (X, Xr, H, and N-Series Recorders)

Backing Up All Cameras

1. Open the **Network Backup** window. Right-click your desired recorder on the **Server List** and then click **Network Backup**.
2. If necessary, select the desired recorder on the **Site Name** list and type a **User ID** and **Password**.
3. Click **Connect**.
4. Click a date on the calendar. Browse to preceding months or years using the arrows.
5. Click the **Hour** you want to backup, and then select the **Minute** (shown in ten minute blocks).
6. Click the **Backup Path** folder icon to browse to the network storage location.
7. Click **Start**. The **Download Status** section will display backup progress.
8. To stop a backup already in progress, click **Stop**.

BACKUP (E-Series Recorders)

Regular Backup

1. Open the **Network Backup** window. Right-click your desired recorder on the **Server List** and then click **Network Backup**.
2. Click on a date on the calendar. Browse to preceding months or years using the arrows.
3. Type a **Start Time** and an **End Time**, or use the arrows to define the time.
4. Select a backup location from the **Target Drive** list.
5. Select the check boxes next to the channels to include in the backup or select **All**.
6. Click **Start Backup**. The Progress section will display backup progress.

Scheduled Backup

1. Open the **Network Backup** window. Right-click your desired recorder on the **Server List** and then click **Network Backup**.
2. Click **Schedule**.
3. Select the recorders that you want to create backup schedules for.
4. Select a backup location from the **Target Drive** list.
5. Set the **Run Time** to define what time of day the system will perform the backup.
6. Set the **Start Time** and the **End Time** to define the hours of each day to include in the backup.
7. To run a scheduled backup each time the system is turned on, select **Autorun on Windows Startup**.
8. Click **Apply** to save changes.