

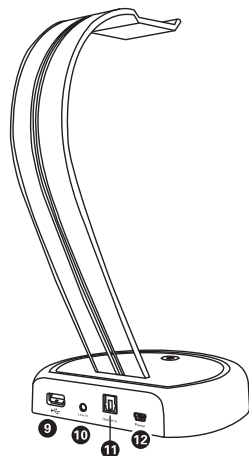
AFTERGLOW®

WIRELESS HEADSET

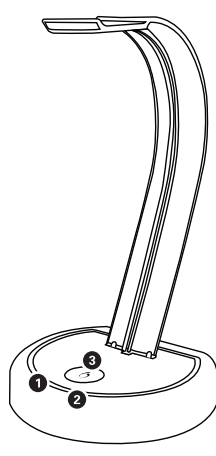


USER MANUAL

WIRELESS TRANSMITTER



9. PLAY AND CHARGE USB PORT
10. ANALOG AUDIO/ STEREO IN
11. DIGITAL AUDIO/ OPTICAL IN
12. USB POWER



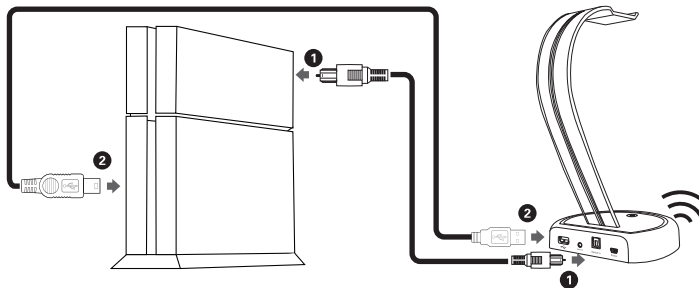
- 3 LEDs:
1. Dolby Digital Status
2. Digital/ Analog Status
3. Pairing Button

ENGLISH

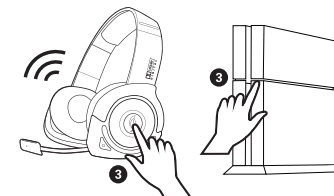
SET UP: PLAYSTATION® 4

ENGLISH

1. Connect Optical Cable to back of console and Wireless Transmitter.
2. Connect USB Play and Charge cable to power outlet of Wireless Transmitter and USB slot on console.



3. Turn the console and headset power ON.



For further instructions regarding PS4 setup, contact PDP at 1-800-331-3844 or www.pdp.com/support.

TROUBLESHOOTING

- I CANNOT HEAR AUDIO: Make sure –
- 1) Wireless Transmitter is connected to live audio source with provided optical or analog cable and AV source is turned on and active.
 - 2) Wireless Transmitter is powered via USB—you can tell if Transmitter is powered with arc lighting up solid blue.
 - 3) Headset is turned on and mic tip LED is solid lit.
 - 4) Volume dial is turned up and game/chat mixer is towards middle or on game.
 - 5) Source device, DTS audio is not selected.

I CANNOT HEAR OTHERS DURING CHAT

- 1) Make sure chat/game balance is toward middle.
- 2) Xbox users make sure that chat cable (green) is connected to controller and headset.
- 3) For PS3 users make sure "Afterglow 5.1 Surround Sound headset" is selected as chat output device at Audio Device Settings.
- 4) PC/Mac users make sure headset is selected as chat output device.

OTHERS CANNOT HEAR ME: Make sure –

- 1) Headset is connected and Mic tip is a solid color
- 2) Pull mic out and place close to mouth
- 3) Make sure mic is not muted

– You can tell if it is on mute by mic tip LED blinking

*IF YOU DID ALL OF THESE STEPS AND STILL HAVE QUESTIONS, CALL PDP AT 1-800-331-3844 OR GO TO: [HTTP://WWW.PDP.COM/T-SUPPORT.ASPX](http://WWW.PDP.COM/T-SUPPORT.ASPX)

POWER AND CHARGING

- *AFTERGLOW WIRELESS HEADSET HAS BUILT-IN BATTERY WITH UP TO 10 HOURS OF LIFE.
- Headset comes with some charge however, it is recommended to charge the headset fully before use.
 - When charging, ear cup lights pulsate, which indicates charging.
 - When fully charged ear cup lights stop pulsating and stay lit.

LOW BATTERY

- Afterglow Headset will alert with audio tone when battery is low.
- Low battery tone will be heard once per minute.
- Play time estimated 10 minutes once in low battery stage.

Headset can be charged while power on/off.

NOTE: SOME GAMING CONSOLES AND COMPUTERS DON'T PROVIDE POWER TO USB PORTS WHILE POWERED OFF.

Wireless Transmitter and Headset needs a live USB port to charge.

AUDIO MODES

Headset offers 3 different Audio Modes; you can see which mode you are in based on the mic tip color:

1) 5.1 Dolby Surround—Blue

5.1 Dolby Digital audio without enhancements; offers well-balanced acoustic tuning and enables you to hear everything game developers intended you to hear.

2) 5.1 Dolby Surround + Bass Boost—Red

For those who prefer extra kick on low end frequency spectrum, this mode provides undistorted, clean, digitally-enriched sound.

3) Immersive Surround—Purple

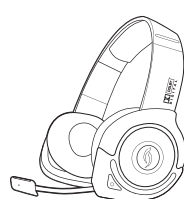
This proprietary 3D sound algorithm expands audio which creates a more immersive sound without altering directionality.

*NOTE: HEADSET WILL DEFAULT TO "5.1 DOLBY SURROUND" MODE IN STARTUP AND WILL REVERT TO THIS MODE EVERY TIME YOU TURN IT ON.

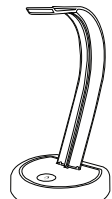
PRISMATIC LIGHTING

You can change and set LED color of headset by holding the Mode button; lights will begin changing colors until you release Mode button. Letting go of Mode button on desired color will set ear cup color.

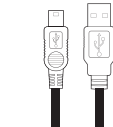
WHAT'S IN THE BOX



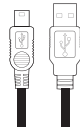
WIRELESS HEADSET



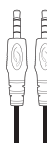
WIRELESS TRANSMITTER



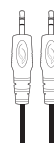
10-FOOT PLAY AND CHARGE CABLE



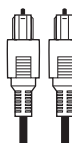
3-FOOT POWER CABLE



3.5 MM AUDIO CABLE



2.5 MM XBOX CHAT CABLE



OPTICAL CABLE



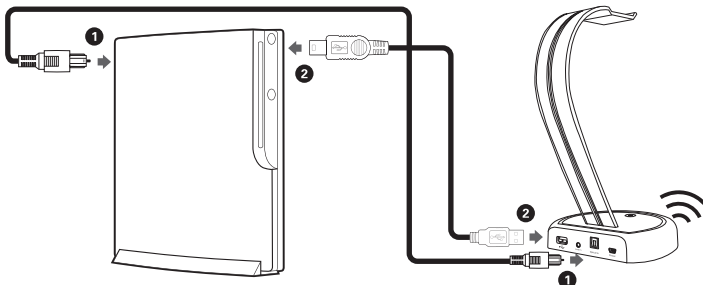
USER MANUAL

ENGLISH

SET UP: PLAYSTATION® 3

ENGLISH

1. Connect Optical Cable to back of console and Wireless Transmitter.
2. Connect USB Play and Charge cable to power outlet of Wireless Transmitter and USB slot on console.



3. Turn the console and headset power ON.

Then in your Playstation XMB menu:

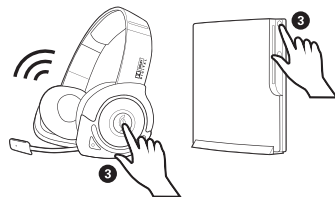
Chat Audio:

1. Go to Settings > Accessory Settings > Audio Device Settings
2. Change Input/Output device to "Afterglow 5.1 Surround Sound Headset"

Game Audio:

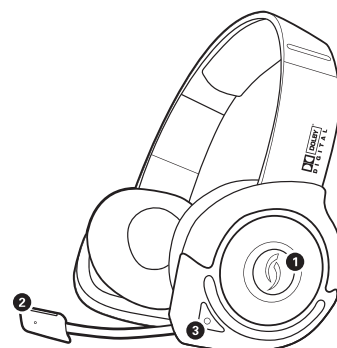
3. Go to Settings > Sound Settings > Audio Output Settings
4. Select "Optical" for sound out option.

Note: If you want game sound to come from the headset and the TV simultaneously, turn the "Audio Multi Out" ON.

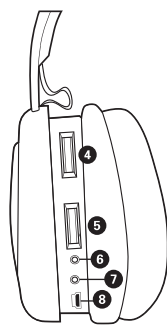


ENGLISH

HEADSET OVERVIEW



1. MUTE/POWER BUTTON (TO POWER ON: PRESS AND HOLD BUTTON)
2. RETRACTABLE MICROPHONE
3. MODE BUTTON

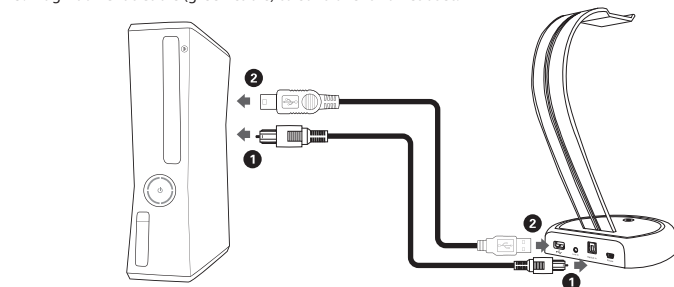


4. MASTER VOLUME
5. CHAT/GAME BALANCE
6. XBOX CHAT
7. MOBILE DEVICE LINE IN
8. USB CHARGING PORT

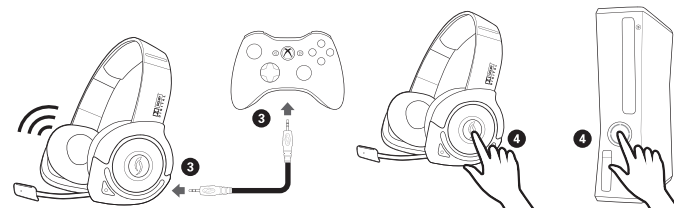
SET UP: XBOX 360®

ENGLISH

1. Plug Optical Cable to back of console and Wireless Transmitter.
2. Plug USB Play and Charge cable to power outlet of Wireless Transmitter and USB slot on console.
3. Plug Xbox Chat Cable (green cable) to controller and headset.



4. Turn the console and headset power ON.

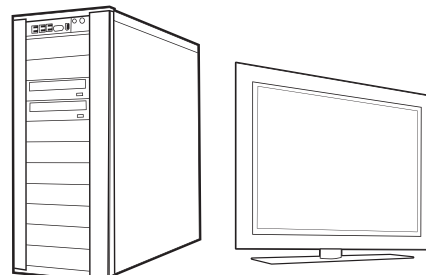


SET UP: PC/MAC

ENGLISH

*NOTE: IF YOUR PC HAS OPTICAL INPUT PLEASE SET UP LIKE XBOX 360 OR PS3

For analog audio (3.5 mm pic) make sure stereo audio is coming from computer headphone jack and USB connection is configured for chat only.



MOBILE MODE

1. Plug the headset to a mobile device using the standard 3.5mm audio jack.
2. Volume controls on the headset will not function, adjust volume at the mobile device.
3. You can keep the Prismatic lights on by turning the headset ON, pressing and holding the MODE button for 10 seconds.

LIGHTING LEGEND

ENGLISH

HEADSET

DOLBY 5.1 SURROUND SOUND	MIC TIP LED SOLID BLUE
DOLBY 5.1 SURROUND SOUND + BASS BOOST	MIC TIP LED SOLID RED
IMMERSIVE SURROUND SOUND	MIC TIP LED SOLID PURPLE
HEADSET SEARCHING FOR TRANSMITTER	MIC TIP LED COLORS ALTERNATING
MIC MUTE	MIC LED BLINKS ONCE A MINUTE
LOW BATTERY	EAR CUP LED OFF
PRESS AND HOLD MODE BUTTON	EAR CUP LED TRANSITION

WIRELESS TRANSMITTER

SEARCHING FOR HEADSET	AFTERGLOW LED BLINKING SLOW
WIRELESS TRANSMITTER IN PAIRING MODE	AFTERGLOW LED BLINKING FAST
WIRELESS TRANSMITTER/HEADSET CONNECTED	AFTERGLOW LED SOLID BLUE
WIRELESS TRANSMITTER POWER ON	WIRELESS TRANSMITTER ARC LIGHTS ON BLUE
DOLBY DIGITAL 5.1 AUDIO	DOLBY DIGITAL LED SOLID BLUE
AUDIO INPUT IS DIGITAL	DIGITAL INPUT LED SOLID BLUE
AUDIO INPUT ANALOG	DIGITAL INPUT LED OFF

FCC ID:
Headset: XSB-PL9215R
Stand: XSB-PL9215T

IC:
Headset: 8814A-PL9215R
Stand: 8814A-PL9215T

1840 East 27th Street
Vernon, CA 90058 USA
Ph: 800-331-3844 (USA and Canada only)
Siena Court, Broadway
Maidenhead SL6 1NJ

PL-9215: 5.1 Surround Sound Wireless Headset

2 year limited warranty.
See www.pdp.com for details.
Garantie limitée de 2 ans.
Voir www.pdp.com pour plus de détails.

